



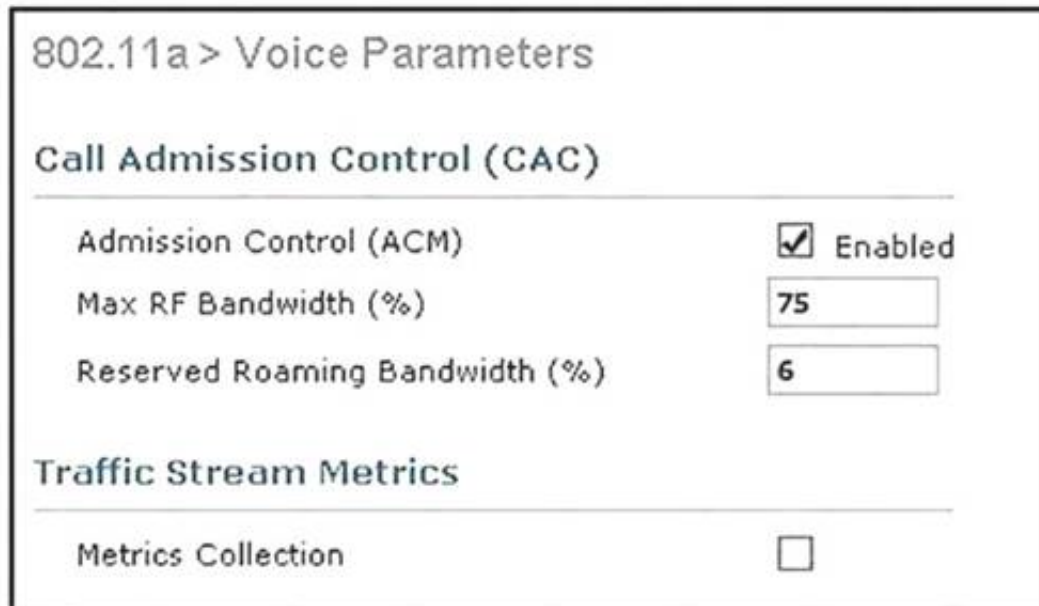
Cisco

Exam Questions 300-365

Deploying Cisco Wireless Enterprise Networks

NEW QUESTION 1

Refer to Exhibit.



802.11a > Voice Parameters

Call Admission Control (CAC)

Admission Control (ACM) ☒ Enabled

Max RF Bandwidth (%)

Reserved Roaming Bandwidth (%)

Traffic Stream Metrics

Metrics Collection ☐

What two items need to be supported on the VoWLAN phones in order to take full advantage of this WLAN configuration? (Choose two.)

- A. APSD
- B. 802.11a
- C. 802.11e
- D. WMM
- E. 802.11r
- F. SIFS

Answer: CD

NEW QUESTION 2

A network engineer for a college dormitory notices that student devices are filling up the SP-DB and are not allowing the shared wireless printers to be discovered. Which feature can be used to reserve space in the SP-DB for the printers?

- A. mDNS-AP
- B. LSS
- C. Priority MAC
- D. sso

Answer: C

NEW QUESTION 3

Which two options are limitations of using an AP as a workgroup bridge? (Choose two.)

- A. Only factory-configured MAPs can support WGB mode.
- B. MAPs that are configured in WGB mode do not answer S36 radio measurement requests.
- C. A limited subset of Layer 2 security types are supported for wireless clients of a WGB.
- D. There is a limit of 20 wired client devices.
- E. Multiple VLANs are not supported for wireless client

Answer: BD

NEW QUESTION 4

Which of the following is not a Cisco RF fingerprinting key advantage over Location Tracking?

- A. Uses existing LWAPP-enabled Cisco Unified Networking components.
- B. Proprietary client hardware or software is required.
- C. Better accuracy and precision.
- D. Reduced calibration effort

Answer: B

NEW QUESTION 5

An engineer used an interface group under the SSID configuration, but noticed that a test client is getting an IP assigned in a different VLAN from the DHCP server. Which two options override the interface group configuration on the SSID? (Choose two.)

- A. static VLAN on client
- B. ACL
- C. AP group
- D. static IP on client
- E. MAC filtering
- F. RF group
- G. AAA override

Answer: CG

NEW QUESTION 6

A WLAN engineer has been asked to upgrade the software on a MSE 3365 Appliance. The engineer cannot access the system using the root password and the Grub password as the details had never been documented. How should the engineer perform the password recovery?

- A. Use a console cable.
- B. Contact Cisco TAC and arrange an RMA of the MSE.
- C. Boot the MSE using the software installation DVD.
- D. The Password can be reset using Prime Infrastructur

Answer: B

NEW QUESTION 7

Which show command will show whether a WLAN is locally or centrally switched on a Cisco Wireless Lan Controller?

- A. show ap config general Cisco_AP
- B. show wlan wlan_id
- C. show filexconnect summary
- D. show filexconnect group detail

Answer: B

NEW QUESTION 8

A customer requires wireless traffic from the branch to be routed through the firewall at corporate headquarters. There is a RADIUS server in each branch location. Which FlexConnect state should be used in this scenario?

- A. local authentication and local switching
- B. local authentication and central switching
- C. central authentication and central switching
- D. central authentication and local switching

Answer: C

NEW QUESTION 9

After a wireless deployment, users report that wireless voice clients are experiencing an unacceptable amount of delay while roaming during a call on the Cisco Unified 7925 Series phones. The customer environment consists of multiple controllers, all running 7.4.121.0 code, operating in a centralized deployment. What configuration issue is most likely contributing to the problem?

- A. The authentication should be set to WPA2-PSK to allow for 802.11n speeds for the Cisco Unified 7925 phones.
- B. The access points on that floor are all on one controller and should be load balanced evenly across multiple controllers.
- C. The access points for that floor are salt and peppered across multiple controllers and should be moved to the primary controller.
- D. The wireless phones are operating in the 2.4 GHz band and should be configured for the 5 GHz band.

Answer: C

NEW QUESTION 10

A network engineer is debugging issues with the mDNS gateway. Which type of reply should be seen in the Wireshark capture when querying for a mDNS service in the Bonjour Cache?

- A. unicast from Prime Infrastructure
- B. unicast from controller
- C. multicast from devices
- D. multicast from controller
- E. unicast from devices
- F. multicast from Prime Infrastructure

Answer: B

NEW QUESTION 10

A network engineer must configure a 5 GHz network to allow for the greatest density of radios possible with the least amount of co-channel interference. Which configuration best fulfills this requirement?

- A. Set 802.11h Local Power constraint to 25 dBm.
- B. Set DCA to 20 MHz channels and enable Extended UNII-2 channels.
- C. Enable Event Driven RRM in 5 GHz with a sensitivity of High, n
- D. Configure TPC Power Threshold to -80 dBm and set interference Optimal Mode (TPCv2).

Answer: B

NEW QUESTION 13

Controllers WLC_1 and WLC_2 are in the same mobility group. A wireless client that does not have the same VLAN interface roams from WLC_1 to WLC_2. What happens to the client roaming?

- A. The client context is deleted in controller WLC_1, and a new client context is created in WLC_2 to become the anchor controller
- B. The client context is moved from controller WLC_1 to controller WLC_2. The result is that the WLC_1 client context is deleted and WLC_2 becomes the anchor controller.
- C. The client context is copied from controller WLC_1 to controller WLC_2. The result is that WLC_1 becomes the foreign controller and WLC_2 becomes the

anchor controller.

D. The client context is copied from controller WLC_1 to controller WLC_2. The result is that WLC_1 becomes the anchor controller and WLC_2 becomes the foreign controller.

Answer: D

NEW QUESTION 16

By default, how long does a Mobility Services Engine wait for an echo response from a Wireless LAN Controller before declaring the neighbor dead?

- A. 10 Seconds
- B. 60 Seconds
- C. 15 Seconds
- D. 30 Seconds

Answer: D

NEW QUESTION 19

You have just added a new MSE to Prime Infrastructure and want to synchronize the MSE with your 5508 WLC. which is located behind a firewall in a DMZ. You notice that NMSP messages are failing between the two devices. What traffic needs to be allowed on the Firewall to ensure the MSE and WLC can communicate using NMSP?

- A. UDP 16113
- B. TCP 1613
- C. TCP 16113
- D. UDP 1613

Answer: C

NEW QUESTION 23

A network engineer is configuring QoS and sees a DSCP value of 40. To which CoS value will this be mapped?

- A. 4
- B. 3
- C. 5
- D. 2
- E. 1

Answer: C

NEW QUESTION 28

A network engineer must ensure that corporate wireless users have a better experience than guest wireless users. Which two configurations fulfil requirement? (Choose two.)

- A. Override per-SSID bandwidth contracts on the corporate WLAN to reserve bandwidth.
- B. Modify the corporate WLAN to the Platinum QoS policy.
- C. Enable 802.1p tag on the Gold QoS policy to honor prioritized traffic.
- D. Adjust the guest WLAN radio policy to 80211 b/g only.
- E. Change the guest WLAN to the Bronze QoS policy.

Answer: BE

NEW QUESTION 30

Which two methods to discover a controller does a MAP attempt when it boots up? (Choose two.)

- A. If Ethernet and wireless are available, it attempts to discover only via Ethernet.
- B. If Ethernet is disconnected, it attempts to connect wirelessly using AWPP.
- C. If only wireless is available and it is configured as a MAP, it does not attempt to connect to a WLC.
- D. If Ethernet and wireless are available, it uses Ethernet first.
- E. If it cannot connect via Ethernet, then it chooses wireless.
- F. If Ethernet is disconnected, it attempts to connect wirelessly using the configured DHCP option.

Answer: AB

NEW QUESTION 34

A client reports that video is not streaming. The administrator determines the client is connecting at a data rate of 12 Mbps and is trying to stream to a valid multicast address on the network. What three items should the administrator check next to troubleshoot the issue? (Choose three)

- A. IGMP snooping is turned off because the client cannot request to join a group, only access points can.
- B. Video-stream for the multicast video is configured in the controller.
- C. WLAN has been set for a QoS value of Platinum.
- D. WLAN has been configured to allow multicast-direct to work correctly and multicast-direct has been enabled globally.
- E. WLAN has been set for a QoS value of Gold.
- F. RTSP is used to stream the video due to wireless multicast not using acknowledgement.

Answer: BDE

NEW QUESTION 36

A customer has "quiet" wireless clients that use static IP addresses. Which two WLAN configurations are required for these wireless clients to connect properly? (Choose two.)

- A. Disable DHCP address assignment required.
- B. Enable passive client.
- C. Disable allow AAA override.
- D. Enable static IP tunneling.
- E. Disable DHCP server overrid

Answer: AE

NEW QUESTION 40

A customer recently implemented WLC wireless multicast. Clients and connecting at the highest mandatory wireless rate of 24 Mbps and are receiving multicast traffic, but WLC cpu utilization and wired side network load has increased substantially. What three actions should the engineer take next to optimize the configuration? (Choose Three)

- A. verify that Global Multicast mode has been enabled
- B. verify that IGMP snooping is disabled on the wireless controller since the access points are handing IGMP messages from the clients.
- C. make sure the highest mandatory rate is set to 54 Mbps so that the multicast traffic has sufficient bandwidth
- D. verify Multicast Listener Discovery (MLD) v1 snooping has been enabled to keep track of and deliver IPv4 multicast flows
- E. change the wireless controller from Multicast-Unicastmodeto Multicast-Multicast mode and assigna multicast address in the 239.X.X.X/8 subnet
- F. verify that the L3 interfaces are configured for pirn sparse-dense-mode on the VLAN servicing the wireless access points as well as the wireless controller's management VLAN

Answer: ABE

NEW QUESTION 41

CMX Facebook WiFi can allow access to the network before authentication. Which two of the following options are available? (Choose two)

- A. Allow all the traffic before authentication and intercept HTTPs only.
- B. Allow HTTP traffic only before authentication and block all the traffic.
- C. Allow SNMP traffic only before authentication and block all the traffic.
- D. Allow all the traffic before authentication and intercept HTTP only.
- E. Allow HTTPs traffic only before authentication and block all other traffi

Answer: BD

NEW QUESTION 42

You have set up FlexConnect APs. For which scenario is Fast Roaming supported, providing the WLAN is mapped to the same VLAN and the client is roaming to an AP on the same Cisco WLC?

- A. central switching with PMK (OKC) between different FlexConnect groups
- B. local switching with Cisco Centralized Key Management within the same FlexConnect group
- C. central switching with Cisco Centralized Key Management between different FlexConnect groups
- D. local switching with PMKID within the same FlexConnect group

Answer: B

NEW QUESTION 47

A customer has implemented a N+1 high availability plan in a multistory building. All APs on odd numbered floors are set as primary to WLC-A and all APs on even numbered floors are set as primary to WLC-8. Which two problems are likely to arise from this design? (Choose two)

- A. inconsistent CleanAir data due to multiple WLCs
- B. floor-to-floor bleed-through that causes intercontroller roaming delays
- C. AVC inconsistency due to multiple mobility group members
- D. legacy device compatibility with multiple WLC configuration that causes disconnects
- E. unpredictable AP loading during a WLC failure

Answer: AC

NEW QUESTION 51

What are two functions of the RAP in a mesh network? (Choose two.)

- A. It provides a wired connection for the wireless mesh APs.
- B. It adds capacity and resilience to a mesh area.
- C. it creates a centralized management location for the mesh network.
- D. it reduces the hop count to the wireless network that is connected to the edge.
- E. it routes traffic from the wireless mesh to the wired networ

Answer: BD

NEW QUESTION 53

A customer requires that the remote site be able to utilize local servers when the AP is in WAN-down (standalone mode). Which AP mode must be configured on the wireless controller?

- A. SE-Connect

- B. Monitor
- C. Local
- D. FlexConnect
- E. Sniffer
- F. Rogue Detector

Answer: D

NEW QUESTION 58

What address do PIM routers listen to in order to automatically discover the best RP for each multicast group?

- A. 224.0.0.13
- B. 224.0.1.39
- C. 224.0.0.14
- D. 224.0.140

Answer: D

NEW QUESTION 60

A network engineer observes a spike in controller CPU overhead and overall network utilization after enabling multicast on a controller with 500 APs. What feature is necessary to correct the issue?

- A. controller IGMP snooping
- B. unicast AP Multicast Mode
- C. broadcast forwarding
- D. multicast AP Multicast Mode

Answer: B

NEW QUESTION 65

You are deploying a combination of Cisco Unified Wireless IP Phones 7921G and 7925G at your branch offices in a centralized call processing environment that requires high availability at branch locations. Which three components need to be verified before the wireless IP phones can be deployed? (Choose three.)

- A. Sufficient SRST license support at each branch location
- B. Support for local voice mail
- C. Branch gateways support MoH
- D. Properly configured QoS over the IP WAN links
- E. Support for single number reach
- F. Support for E.164 dialing
- G. Sufficient IP phone licenses in the Cisco Unified Communications Manager cluster

Answer: ADG

NEW QUESTION 66

When a Vocera badge performs a broadcast call in a properly configured VoWLAN using WLC v7.0, which two choices indicate how the QoS is marked? (Choose two.)

- A. Upstream marked as Best Effort.
- B. Upstream marked as ToS CS4.
- C. Upstream marked as DSCP EF.
- D. Downstream marked as DSCP EF.
- E. Downstream marked as Best Effort.
- F. Downstream marked as Silver

Answer: CE

NEW QUESTION 70

A downstream packet containing a DSCP value arrives at the WLC Ethernet interface from the wired source network. The WLC is configured for QoS WLAN 802.1p mapping. How does the WLC treat the CAPWAP QoS marking when leaving the controller interface for the respective AP and final wireless client destination?

- A. No outer CAPWAP or inner QoS tagging is applied.
- B. No outer CAPWAP QoS tag is applied, but the original DSCP is maintained inside CAPWAP.
- C. The outer CAPWAP CoS is marked and capped while the inner DSCP maintains the original marking.
- D. The outer CAPWAP DSCP is marked and capped without any inner DSCP value.

Answer: C

NEW QUESTION 75

Which protocol/port number is used by mDNS for service advertisement?

- A. TCP 5353
- B. UDP 53
- C. UDP 5353
- D. TCP 53

Answer: C

NEW QUESTION 79

Five identical APs at a branch office must be upgraded. You consider using the FlexConnect AP Upgrade feature. Which two statements about this feature are true? (Choose two.)

- A. All APs download the upgrade image over the WAN link at the same time.
- B. A slave AP eventually downloads the image from the WLC, if the master AP is unavailable.
- C. Full images are downloaded to each AP over the WAN link, but only when no client activity is seen on the AP.
- D. Only one AP downloaded the upgrade image over the WAN link.
- E. All APs downloaded the upgrade image from the WLC using the pre-image download feature.

Answer: DE

Explanation: Reference:

https://www.cisco.com/c/en/us/td/docs/wireless/controller/7-4/configuration/guides/consolidated/b_cg74_CONSOLIDATED/b_cg74_CONSOLIDATED_chapter_010010001.html

NEW QUESTION 81

An engineer has installed a new voice WLAN. Which three configurations would the engineer verify for QoS on the controller? (Choose three.)

- A. client load balancing
- B. DHCP address assignment required
- C. Platinum QoS for the VoWLAN
- D. IEEE 802.1X and Cisco Centralized Key Management
- E. WMM allowed
- F. client band select

Answer: ACE

Explanation: Reference:

https://www.cisco.com/c/en/us/td/docs/wireless/controller/8-3/config-guide/b_cg83/b_cg83_chapter_0100010.pdf

NEW QUESTION 84

Which feature must be configured on Cisco WLC to prioritize multicast traffic over a wireless network?

- A. client link
- B. mDNS
- C. client band select
- D. media stream

Answer: B

NEW QUESTION 87

A wireless printer has been configured with a static IP address. Which action does the Cisco WLC take in response?

- A. It does not transfer AAA requests to the printers.
- B. It does not transfer ARP requests to the printers.
- C. It does not transfer join requests to the printers.
- D. It does not transfer location information to the printers.

Answer: A

Explanation: Reference:

<https://www.cisco.com/c/en/us/support/docs/wireless/wireless-lan-controller-software/118833-wlcdesign-ftrs-faq.html>

NEW QUESTION 88

Which option is a physical entity in converged access wireless network design?

- A. mobility domain
- B. switch peer group
- C. mobility group
- D. mobility agent

Answer: C

NEW QUESTION 91

A sporting arena has a new wireless network and finds that clients are not connecting to their nearest access point. Which setting can be enabled to minimize this behavior and reduce the AP view of channel utilization?

- A. Use an RF profile with an RX-SOP threshold.
- B. Enable Band Select
- C. Enable Client Balancing
- D. Turn on CleanAir

Answer: A

NEW QUESTION 94

Which option is a calibration of a Cisco MSE deployment limited to when that deployment is using the linear point collection method?

- A. rogue AP
- B. associated 802.11 a/n clients
- C. RFID tag
- D. associated 802.11 b/g/n clients

Answer: A

Explanation: Reference:

https://www.cisco.com/c/en/us/td/docs/wireless/mse/8-0/MSE_CMX/8_0_MSE_CAS/7_4_MSE_CAS_chapter_01010.html

NEW QUESTION 95

When CAPWAP protocol runs over IPv4, which UDP port numbers are used for control and data traffic, respectively?

- A. control 5246, data – UDP-Lite(IP Protocol 136)
- B. control 5247, data – 5246
- C. control 5246, data – 5247
- D. control 5247, data – UDP-Lite(IP Protocol 136)

Answer: C

NEW QUESTION 98

An engineer has deployed a WLAN in a high-density auditorium and expects the number of clients to grow. Which WLC configuration can be used to increase the IP space without any service disruptions?

- A. dynamic interface
- B. interface group
- C. AP group
- D. RF group

Answer: B

NEW QUESTION 99

A security engineer wants all guest users to be terminated on the DMZ of their firewall. Which two configurations must be implemented to fulfill this new requirement? (Choose two.)

- A. TCP port 16666 and 16113 in an ACL on the controller
- B. UDP ports 16666 and IP protocol 97 on the firewall
- C. a mobility group with a controller in an isolated network on the firewall
- D. an RF group with a controller in an isolated network on the firewall
- E. UDP ports 1812 and 1645 in an ACL on the controller

Answer: BC

NEW QUESTION 102

Which two access categories could use TXOP value higher than 0, as per 802.11e standard? (Choose two.)

- A. AC_VO
- B. AC_BK
- C. AC_VI
- D. AC_BE
- E. AC_NC

Answer: AC

Explanation: Reference:

<https://www.cisco.com/en/US/docs/solutions/Enterprise/Mobility/emob30dg/WANQoS.pdf>

NEW QUESTION 106

A wireless engineer is configuring a Cisco MSE by using the automatic installation script. Which two parameters are mandatory and must be configured at least once? (Choose two.)

- A. Ethernet interface
- B. hostname
- C. GRUB password
- D. domain name
- E. NTP server

Answer: AB

Explanation: Please note that the following parameters (indicated by *) are mandatory and must be configured at least once.

-> Hostname
-> Network interface eth0
-> Timezone
-> Root password
-> NCS Communication username
-> NCS Communication password Reference:
https://www.cisco.com/c/en/us/td/docs/wireless/mse/7-6/Virtual_appliance/Installation_Config_Guide/Cisco_MSE_VA_Config_Guide/Installing_MSE_Virtual_Appliance.html

NEW QUESTION 110

Clients at a remote FlexConnect site with ID 338789750 are experiencing poor roaming despite the fact that Cisco Centralized Key Management is enabled on the SSID. Which FlexConnect feature must be configured to resolve this issue?

- A. local authentication
- B. central switching
- C. learn client IP address
- D. FlexConnect group

Answer: D

NEW QUESTION 115

An engineer must create data-link redundancy for the company Cisco Wireless LAN Controller. The engineer has decided to configure LAG-based redundancy instead of port-based redundancy. Which three features of LAG-based redundancy helped steer this decision? (Choose three.)

- A. All interface traffic passes as long as one port is up.
- B. Multiple untagged dynamic interfaces on same port.
- C. Interface connection to two separate non-stacked switches.
- D. Packets are always sent out on the same port they are received on.
- E. Full bandwidth of all links available.
- F. Ports are grouped into multiple LAG

Answer: ADF

NEW QUESTION 118

A network engineer just finished deploying a converged access wireless infrastructure. The configuration consists of Cisco Catalyst 3850 Series switches operating as mobility controllers and agents in multiple switch peer groups and mobility subdomains. Which change must be made to allow for seamless roaming between switch peer groups?

- A. Add one Cisco 5760 WLC as a mobility oracle and configure on each of the mobility controllers in the converged access infrastructure.
- B. Add another Cisco Catalyst 3850 switch as a mobility oracle and configure on each of the mobility controllers in the converged access infrastructure.
- C. Convert one controller to a mobility oracle while the other mobility controllers and agents should be configured in the same mobility domain.
- D. Configure all switches as mobility controllers in the same switch peer group to allow for seamless roaming.

Answer: D

NEW QUESTION 122

An engineer is attempting to send multicast data to all multicast routers in the network with ID 338789750. Which IP address should be used?

- A. 224.0.0.1
- B. 224.0.0.2
- C. 224.0.0.4
- D. 224.0.0.3

Answer: B

NEW QUESTION 123

An engineer is configuring visitor connect on their Cisco MSE. Which URL must they use for their redirection URL?

- A. Error! Hyperlink reference not valid.
- B. Error! Hyperlink reference not valid.
- C. Error! Hyperlink reference not valid.
- D. Error! Hyperlink reference not valid.

Answer: A

Explanation: Reference:

https://www.cisco.com/c/en/us/td/docs/wireless/mse/8-0/CMX_Connect_Engage_Visitor_Connect/Guide/Cisco_CMX_Connect_Engage_Config_Guide_VC/CMX_Dashboard_Visitor_Connect.html

NEW QUESTION 127

An engineer wants to identify historical data collected by the Cisco MSE on rogue access points over the past two years. If the Cisco MSE is configured for maximum historical data retention, how many months can be searched?

- A. 24
- B. 36
- C. 6
- D. 12

Answer: D

NEW QUESTION 128

A customer has configured a wireless LAN controller and set the 802.11a/n data rates. All rates are enabled where 5.5 Mbps, 11Mbps, and 24 Mbps are set to Mandatory. What will APs send over the 24 Mbps data rate?

- A. channel announcements
- B. DTPC support
- C. multicast broadcast
- D. beacons

Answer: C

NEW QUESTION 132

Branch wireless users report that they can no longer access services from head office but can access services locally at the site. New wireless users can associate to the wireless while the WAN is down. Which three options (Cisco FlexConnect state, operation mode, and authentication method) are seen in this scenario? (Choose three.)

- A. authentication-central/switch-local
- B. standalone mode
- C. authentication-central/switch-central
- D. WPA2 personal
- E. authentication-local/switch-local
- F. WPA2 enterprise

Answer: BDE

NEW QUESTION 136

Which two components comprise the NetFlow architecture? (Choose two.)

- A. collector
- B. gateway
- C. event correlator
- D. exporter
- E. application transcoder

Answer: AD

NEW QUESTION 140

Refer to the exhibit.

Interface Name	VLAN Identifier	IP Address
clients	2	192.168.2.2
guests	3	192.168.3.2
management	untagged	192.168.1.2
virtual	N/A	1.1.1.1

WLAN ID	Type	Profile Name	WLAN SSID	Admin Status	Security Policies
1	WLAN	CORP-DATA-SSID	CORP-DATA	Enabled	[WPA2] [Auth(802.1X)]
4	WLAN	GUEST-DATA-SSID	GUEST-DATA	Enabled	Web-Auth

A wireless tech must add an AP group mapping with the interface on VLAN 3 and the GUEST-DATASSID to the existing AP group “lobbyAPs”. Which command makes this change?

- A. config wlan apgroup interface-mapping add lobbyAPs 3 GUEST-DATA-SSID
- B. config wlan apgroup interface-mapping add lobbyAPs 4 3
- C. config wlan apgroup interface-mapping add lobbyAPs 4 guests
- D. config wlan apgroup interface-mapping add lobbyAPs 3 GUEST-DATA

Answer: C

Explanation: Reference:

<https://www.cisco.com/c/en/us/support/docs/wireless-mobility/wireless-vlan/71477-ap-groupvlanswlc.html>

NEW QUESTION 144

How is password recovery performed on a Cisco Mobility Services Engine 3300 Series?

- A. Interrupt the boot sequence and modify the GRUB boot loader.
- B. Reboot using a CD that is imaged with an ISO bootable file to reimage Cisco MSE.
- C. Interrupt the boot sequence and modify the BIOS boot loader.
- D. Use the emergency TFTP bootable image.

Answer: A

Explanation: Reference:

https://www.cisco.com/c/en/us/td/docs/wireless/mse/8-0/MSE_CMX/8_0_MSE_CAS/7_4_MSE_CAS_chapter_01101.html

NEW QUESTION 146

A customer is concerned about the number of associations on the guest WLAN and wants to reduce load to ensure there are sufficient resources for the High Density WLAN. Which configuration setting meets this need?

- A. Change the QoS profile of the guest WLAN to Bronze.
- B. Set a low Maximum Allowed Clients on the Guest WLAN.
- C. Configure MFP client protection on the high density WLAN.
- D. Enable DHCP Profiling and restrict guest devices using a policy map.

Answer: B

NEW QUESTION 148

Refer to the exhibit.

During deployment, a network engineer notices that voice traffic is not being tagged correctly as it traverses the network. Which COS to DSCP map must be modified to ensure that voice traffic is treated properly?

- A. COS of 5 to DSCP 46
- B. COS of 7 to DSCP 48
- C. COS of 6 to DSCP 46
- D. COS of 3 to DSCP of 26

Answer: A

NEW QUESTION 149

A customer called with a requirement that internal clients must be on different subnets depending on the building they are in. All access points are operating in local mode and will not be modified, and this is a single controller solution. Which configuration change creates the desired result?

- A. Set the SSID to the desired VLAN under WLANs, configure 802.1x ACS to assign the correct VLAN based on the SSID the client is authenticating from.
- B. Create AP groups for each desired location, map the correct VLANs to the internal SSID, and add the access point for that location.
- C. Configure the access point in the FlexConnect mode and set the correct VLAN to SSID mapping based on location.
- D. Create mobility anchors for the SSID, and on the controller under the internal SSID, create a foreign map to the desired VLAN based on location.

Answer: A

NEW QUESTION 151

An engineer has all of the remote locations using a pair of FlexConnect WLCs with locally switched WLANs and must leverage local certificate based authentication. Which component must be configured?

- A. Configure the APs in FlexConnect Central Auth.
- B. Manually install certificates on access points.
- C. Upload the vendor certificate to the Cisco WLC.
- D. Cisco WLC must be integrated with LDAP.

Answer: A

NEW QUESTION 153

A network engineer is designing a high capacity WLAN for a conference area.

- A. The enterprise is concerned about non-business traffic consuming excessive bandwidth and impacting performance.
- B. What can be used in the design to allow the controller to block or throttle applications?
- C. AVC
- D. CMX
- E. DSCP
- F. RXSOP

Answer: A

NEW QUESTION 154

What is the maximum amount of AP groups that can be configured on a Cisco virtual wireless controller running 8.0 code?

- A. 50
- B. 200
- C. 500
- D. 1000

Answer: B

NEW QUESTION 156

SIMULATION

Scenario:

You have been tasked with setting up a mobility group (Mobility_Test) in a test lab. There are two WLCs that you will need to configure (Test1 and Test2). Use the Administrative Workstation to access the Test1 and Test2 WLCs. Once configured you will need to verify that the mobility group peers are communicating properly.

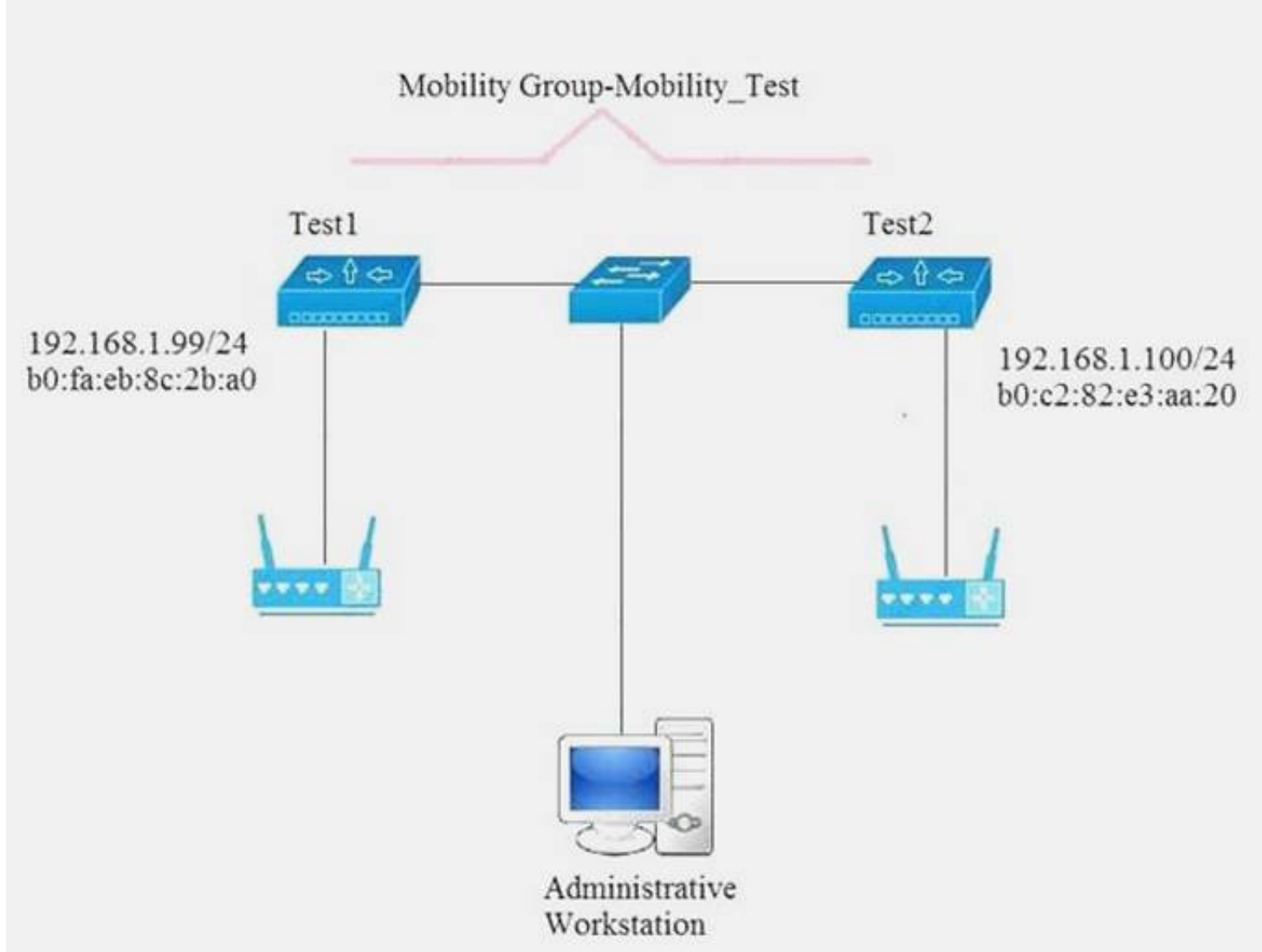
Mobility Group Name: Mobility_Test Mobility Group Members: Test1

IP Address: 192.168.1.99

MAC Address: b0:fa:eb:8c:2b:a0 Mobility Group Members: Test2 Ip Address 192.168.1.100

MAC Address: d0:c2:82:e3:aa:20

You have configured mobility group properly when the status of the mobility group peers is UP. TOPOLOGY



VIRTUAL TERMINAL

Controller Summary	
Management IP Address	192.168.1.99 / 1/128
Software Version	8.0.110.0
Field Recovery Image Version	7.6.101.1
System Name	Test1
Up Time	0 days, 0 hours, 18 minutes
System Time	Fri Oct 20 09:03:39 2017
Redundancy Mode	N/A
Internal Temperature	+33 C
802.11a Network State	Enabled
802.11b/g Network State	Enabled

CISCO MONITOR WLANs **CONTROLLER** WIRELESS SECURITY MANAGEMENT COMMANDS

Controller

General

General	Name	Test1
Inventory	802.3x Flow Control Mode	Disabled
Interfaces	LAG Mode on next reboot	Disabled (LAG Mode is currently disabled)
Interface Groups	Broadcast Forwarding	Disabled
Multicast	AP Multicast Mode	Multicast 239.1.1.1 Multicast Group Address
Internal DHCP Server	AP IPv6 Multicast Mode	Multicast :: IPv6 Multicast Group Address
Mobility Management	AP Fallback	Enabled
Ports	CAPWAP Preferred Mode	ipv4
NTP	Fast SSID change	Disabled
CDP	Link Local Bridging	Disabled
IPv6	Default Mobility Domain Name	Mobility_Test
mDNS	RF Group Name	Mobility_Test
Advanced	User Idle Timeout (seconds)	300
	ARP Timeout (seconds)	300
	Web Radius Authentication	PAP
	Operating Environment	Commercial (0 to 40 C)


CISCO MONITOR WLANs CONTROLLER WIRELESS SECURITY MANAGEMENT COMMANDS HELP FEEDBACK

Monitor

Summary

Summary

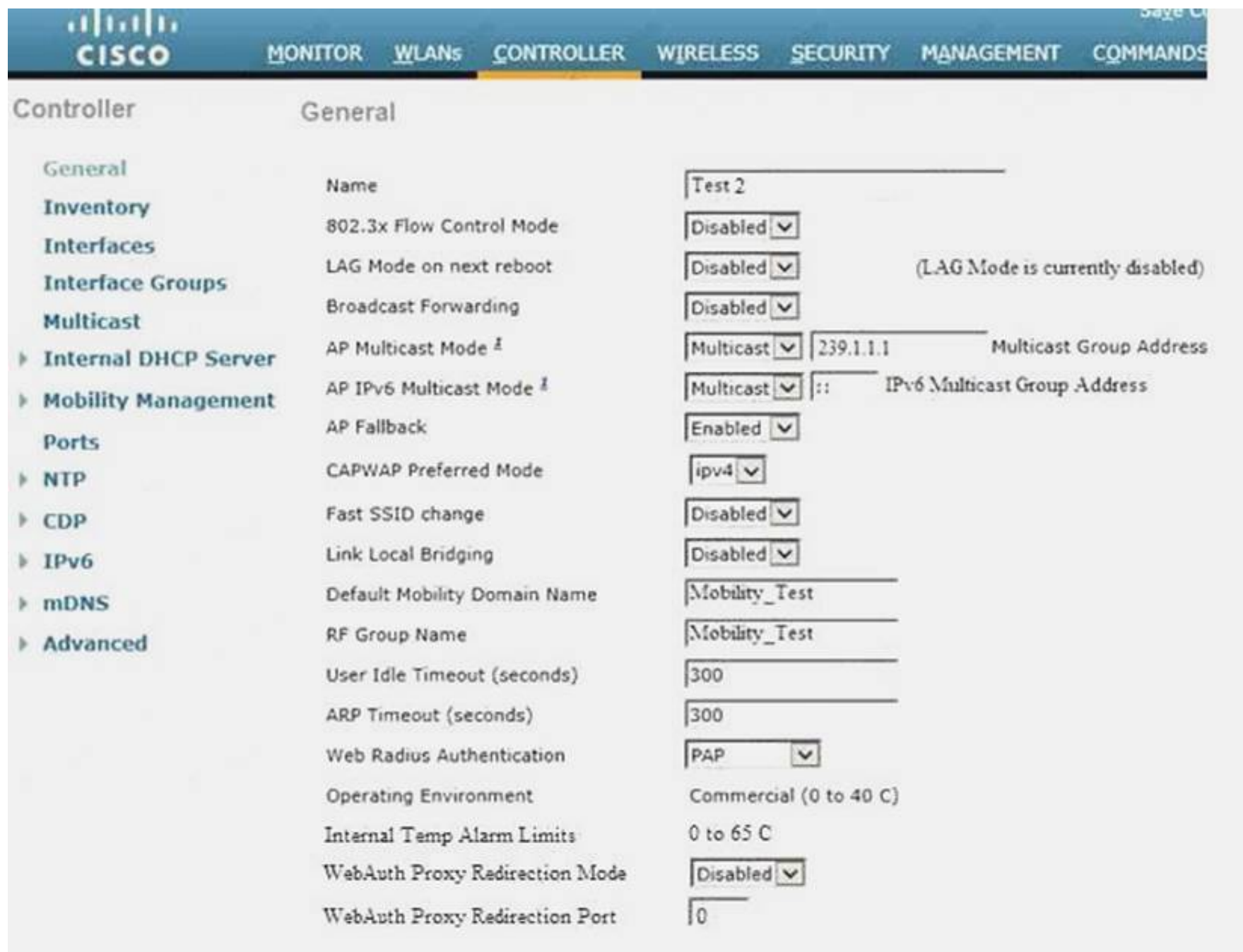
- Access Points
- Cisco CleanAir
- Statistics
- CDP
- Rogues
- Clients
- Sleeping Clients
- Multicast
- Applications
- Local Profiling



5 Access Points Supported

Controller Summary

Management IP Address	192.168.1.100: 1/128
Software Version	8.0.110.0
Field Recovery Image Version	7.5.101.1
System Name	Test2
Up Time	0 days, 2 hours, 41 minutes
System Time	Fri Oct 20 09:03:39 2017
Redundancy Mode	N/A
Internal Temperature	+33C
802.11a Network State	Enabled
802.11b/g Network State	Enabled
Local Mobility Group	Mobility_Test
CPU(s) Usage	0%
Individual CPU Usage	0% 1% 0% 0%



The image shows the Cisco Controller General configuration page for a controller named 'Test 2'. The page is divided into a left sidebar with navigation links and a main configuration area. The sidebar includes links for General, Inventory, Interfaces, Interface Groups, Multicast, Internal DHCP Server, Mobility Management, Ports, NTP, CDP, IPv6, mDNS, and Advanced. The main configuration area lists various settings with their current values and dropdown menus for selection.

Configuration Item	Value
Name	Test 2
802.3x Flow Control Mode	Disabled
LAG Mode on next reboot	Disabled (LAG Mode is currently disabled)
Broadcast Forwarding	Disabled
AP Multicast Mode	Multicast (239.1.1.1 Multicast Group Address)
AP IPv6 Multicast Mode	Multicast (::: IPv6 Multicast Group Address)
AP Fallback	Enabled
CAPWAP Preferred Mode	ipv4
Fast SSID change	Disabled
Link Local Bridging	Disabled
Default Mobility Domain Name	Mobility_Test
RF Group Name	Mobility_Test
User Idle Timeout (seconds)	300
ARP Timeout (seconds)	300
Web Radius Authentication	PAP
Operating Environment	Commercial (0 to 40 C)
Internal Temp Alarm Limits	0 to 65 C
WebAuth Proxy Redirection Mode	Disabled
WebAuth Proxy Redirection Port	0

Answer:

Explanation: Mobility Controllers belong to only one group, and can know several mobility groups On Test 1 WLC

1. Choose Controller> Mobility Management > Mobility Peer

2. Click New

3. Enter the following details of Test 2:

- Mobility Member IP
- Mobility Member Public IP
- Mobility Member Group Name
- Multicast IP Address

4. Apply and Save

Similarly log in to Test 2 and enter details of Test1

NEW QUESTION 157

Which three values make up the combination for Ease calculation in AWPP path selection? (Choose three.)

- coefficient based on SNR
- link budget
- Rx sensitivity
- gain
- hop value
- SNR

Answer: AEF

NEW QUESTION 158

Which two parameters must be considered when conducting an outdoor mesh site survey? (Choose two.)

- weather
- traffic lights
- throughput
- Fresnel zone
- near-far effect

Answer: AD

NEW QUESTION 159

An engineer is reducing the subnet size of the corporate WLAN by segmenting the VLAN into smaller subnets. Clients will be assigned a subnet by location. Which type of groups can the engineer use to map the smaller subnets to the corporate WLAN?

- A. AP groups
- B. RF groups
- C. interface groups
- D. WLC port groups

Answer: C

NEW QUESTION 162

Refer to the exhibit. To which setting is the client limitation for WLAN LAP1 configured?



The screenshot shows the 'WLANs > Edit 'LAP1'' configuration page. The 'Advanced' tab is selected. The following settings are visible:

Setting	Value
Allow AAA Override	<input type="checkbox"/> Enabled
Coverage Hole Detection	<input checked="" type="checkbox"/> Enabled
Enable Session Timeout	<input checked="" type="checkbox"/> 1800 Session Timeout (secs)
Aironet IE	<input checked="" type="checkbox"/> Enabled
Diagnostic Channel	<input type="checkbox"/> Enabled
IPv6 Enable ²	<input type="checkbox"/>
Override Interface ACL	None <input type="button" value="v"/>
P2P Blocking Action	Disabled <input type="button" value="v"/>
Client Exclusion ²	<input checked="" type="checkbox"/> Enabled 60 Timeout Value (secs)
Maximum Allowed Clients ²	25
Static IP Tunneling ²²	<input type="checkbox"/> Enabled

- A. 60
- B. 1800
- C. Client exclusion is not enabled
- D. 25

Answer: D

NEW QUESTION 167

Which value is the default Rx SOP threshold on a WLC?

- A. auto
- B. low
- C. medium
- D. high

Answer: A

NEW QUESTION 171

An engineer is integrating a new Cisco Mobility Services Engine with Cisco Prime Infrastructure to use Cisco CMX Location Analytics. Which action is required?

- A. Enable Context Aware and CMX Browser Engage
- B. Enable tracking parameters in Cisco Mobility Service Engine
- C. Set history parameters in Cisco Mobility Service Engine
- D. Install Cisco Prime infrastructure with floor maps

Answer: B

NEW QUESTION 174

.....

Thank You for Trying Our Product

We offer two products:

1st - We have Practice Tests Software with Actual Exam Questions

2nd - Questions and Answers in PDF Format

300-365 Practice Exam Features:

- * 300-365 Questions and Answers Updated Frequently
- * 300-365 Practice Questions Verified by Expert Senior Certified Staff
- * 300-365 Most Realistic Questions that Guarantee you a Pass on Your First Try
- * 300-365 Practice Test Questions in Multiple Choice Formats and Updates for 1 Year

100% Actual & Verified — Instant Download, Please Click
[Order The 300-365 Practice Test Here](#)