

Exam Questions 210-065

Implementing Cisco Video Network Devices v1.0

<https://www.2passeasy.com/dumps/210-065/>



NEW QUESTION 1

Management wants to modify Cisco TMS to allow users to configure the call behavior with their associated devices and dial from a single ID. Which feature needs to be enabled and configured?

- A. Smart Scheduler
- B. Low-touch Provisioning
- C. FindMe
- D. CMR Provisioning

Answer: C

NEW QUESTION 2

Which benefits does the Capture-Transform-Share solution provide?

- A. voice conferencing services
- B. WAN optimization services
- C. security and firewall services
- D. video conferencing services
- E. DNS, DHCP, and AD services
- F. video on demand and video streaming services

Answer: F

NEW QUESTION 3

XYZ Corporation has more than 1000 Cisco video endpoints and they want a high availability solution for scheduling and OBTP. Which option do you recommend?

- A. standalone Cisco TelePresence Manager server
- B. cluster of Cisco TelePresence Manager servers
- C. standalone Cisco TelePresence Management Suite server
- D. cluster of Cisco TelePresence Management Suite servers in active/passive failover mode
- E. load-balanced cluster of Cisco TelePresence Management Suite servers
- F. Cisco Prime collaboration manager

Answer: D

NEW QUESTION 4

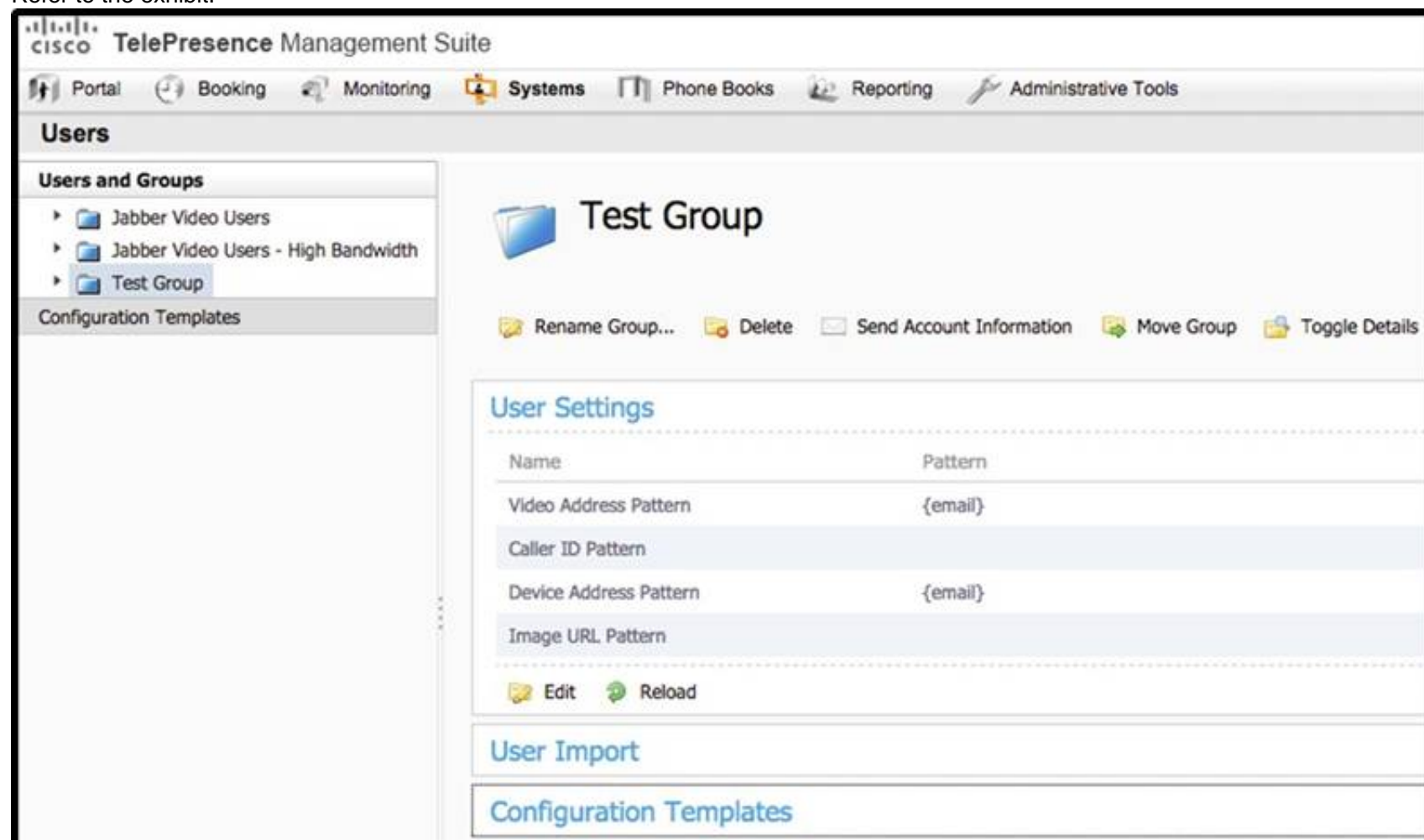
Which protocol does the Cisco TelePresence Content Server use for call signaling?

- A. MGCP
- B. Cisco Proprietary
- C. SCCP
- D. H.323

Answer: D

NEW QUESTION 5

Refer to the exhibit.



Which configuration item shown in the exhibit should be used to assign the internal and external video communication server address for this group of users?

- A. User Settings > Video Address pattern
- B. Administrative Tools > User Settings
- C. Configuration Template > Edit Template
- D. User Import > Configuration

Answer: C

NEW QUESTION 6

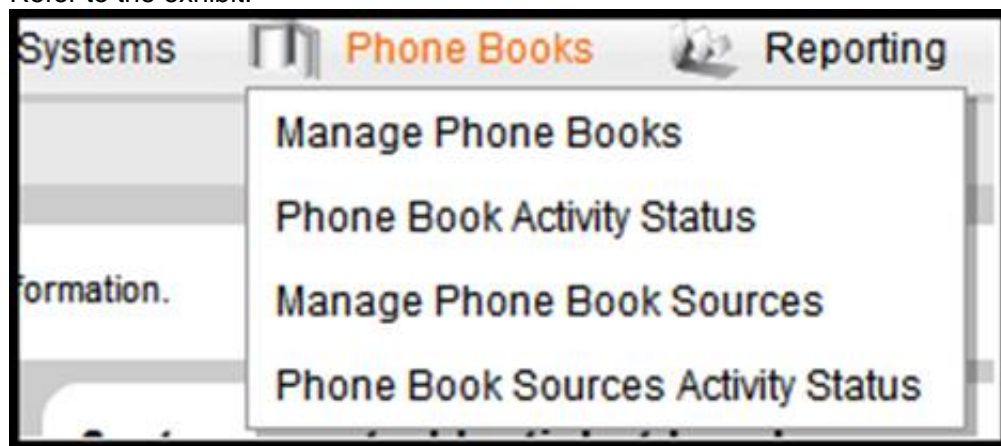
Which description of medianet is true?

- A. A set of protocols that accelerate the delivery of media across the network
- B. A family of switches and routers that support multimedia applications
- C. When the network works together with the endpoints to scale, optimize, and enhance the performance of collaboration components
- D. A capability of the network to enhance video streaming quality
- E. ACisco proprietary feature that is built on hardware DSP resources

Answer: C

NEW QUESTION 7

Refer to the exhibit.



Which system does this web user interface refer to?

- A. Cisco Unified Communications Manager
- B. Cisco Video Communications Server
- C. Cisco Digital Media Manager
- D. Cisco TelePresence Management Suite

Answer: D

NEW QUESTION 8

Which well-known port is used to access the Cisco IP Video Surveillance Operations Manager via a secure, ActiveX web session?

- A. 20
- B. 80
- C. 421
- D. 434
- E. 443
- F. 8080

Answer: E

NEW QUESTION 9

Which encoder is best suited for professional, studio-quality audio and video processing?

- A. Scientific Atlanta Encoder
- B. Cisco Digital Media Encoder 1000
- C. Cisco Digital Media Encoder 2000
- D. Cisco Digital Media Encoder 3000

Answer: C

NEW QUESTION 10

When a call is placed from a Cisco VCS registered SIP-only endpoint to an H.323-only endpoint, which type of call license is consumed?

- A. traversal call
- B. non-traversal call
- C. on-net call
- D. interworking call
- E. off-net call
- F. Cisco Unified Workspace Licensing

Answer: A

NEW QUESTION 10

In an ISR Cisco Video Management and Storage System, what is the maximum storage capacity allowed per module?

- A. 1 TB per module
- B. 2 TB per module
- C. 3 TB per module
- D. 500 MB per module
- E. 750 MB per module
- F. 850 MB per module

Answer: A

NEW QUESTION 13

In the H.264 video codec, which type of video frame is sent when the remote side requests a fast picture update?

- A. I-frame
- B. P-frame
- C. B-frame
- D. C-frame

Answer: A

Explanation: Topic 2, Endpoint Configuration

NEW QUESTION 15

Which Cisco video endpoints run on the Android operating system?

- A. EX-Series
- B. DX-Series
- C. C-Series
- D. MXP-Series

Answer: B

NEW QUESTION 19

A Unified Communications engineer wants to configure a Cisco TelePresence SX endpoint using static IP addressing to use a different TFTP server. Which path will allow the engineer to complete this configuration?

- A. Network Services > Network 1 > DHCP RequestTFTPServerAddress > Off
- B. Network > TFTP > DHCP RequestTFTPServerAddress > Off
- C. Network Services > TFTP > DHCP RequestTFTPServerAddress > Off
- D. Configuration > System Configuration > Provisioning > Set the External Manager Address

Answer: D

NEW QUESTION 22

An executive in XYZ Corporation wants to purchase a desktop video endpoint that can be used for conferencing, as well as a monitor when not in a conference. Which option do you recommend?

- A. C20
- B. EX90
- C. C90
- D. SX80
- E. MX300 2nd generation
- F. Cisco TelePresence Profile Series endpoint

Answer: B

NEW QUESTION 23

When you register the Cisco TelePresence System 500-32 video system with the Cisco Unified Communications Manager, what is the most important item for the registration to be input into the server?

- A. the IPv4 address of the Cisco TelePresence System 500-32
- B. the IP telephone media access control address that is used to manage the system
- C. the media access control address of the Ethernet port of the Cisco TelePresence System 500-32
- D. The Cisco TelePresence System 500-32 will always automatically register with the Cisco Unified Communications Manager server.

Answer: C

NEW QUESTION 25

Which four features are supported by Cisco TelePresence Server for all hardware models in remotely managed mode? (Choose four.)

- A. auto-attendant
- B. ClearPath
- C. Cluster sizes of more than 5 servers
- D. Cascading
- E. Active presence for all devices
- F. Support for Conductor

G. Native scheduling capabilities

Answer: BDEF

NEW QUESTION 28

Which call control device does the Cisco DX650 use?

- A. Video Communications Server
- B. Cisco Unified Communications Manager
- C. Cisco TelePresence Server
- D. Cisco TelePresence Manager
- E. Video Communications Server and Cisco Unified Communications Manager
- F. Cisco Unified Communications Manager and Cisco TelePresence Server

Answer: B

NEW QUESTION 29

Which DHCP option is used by video endpoints to locate the Cisco Communications Manager TFTP server to download the endpoints configuration?

- A. option 43
- B. option 82
- C. option 150
- D. option 176
- E. option 242

Answer: C

NEW QUESTION 33

Which two Cisco TelePresence collaboration endpoints can improve communications, relationships, and user productivity? (Choose two.)

- A. Cisco WebEx Connect IM
- B. Cisco Digital Media Players
- C. Cisco DX650
- D. Cisco MX300 G2

Answer: CD

NEW QUESTION 36

Refer to the exhibit.

Device Information	
Product:	SIP Trunk
Device Protocol:	SIP
Trunk Service Type	None(Default)
Device Name*	LAB_VCS
Description	LAB_VCS
Device Pool*	VAB
Common Device Configuration	< None >
Call Classification*	Use System Default
Media Resource Group List	< None >
Location*	Hub_None
AAR Group	< None >
Tunneled Protocol*	None

SIP Profile Information	
Name*	Standard SIP Profile For Cisco VCS
Description	Default SIP Profile For Cisco Video Communication Server
Default MTP Telephony Event Payload Type*	101
Early Offer for G.Clear Calls*	Disabled ▼
User-Agent and Server header information*	Send Unified CM Version Information as User-Agen ▼
Version in User Agent and Server Header*	Major And Minor ▼

SDP Information	
<input type="checkbox"/>	Send send-receive SDP in mid-call INVITE
<input type="checkbox"/>	Allow Presentation Sharing using BFCP
<input checked="" type="checkbox"/>	Allow iX Application Media
<input checked="" type="checkbox"/>	Allow multiple codecs in answer SDP

A network engineer configures a Cisco Unified Communications Manager and VCS integration via a SIP trunk. Endpoint A is able to conduct video calls to Endpoint B. When Endpoint A attempts to share presentation content with Endpoint B, Endpoint B sees the presentation video on the main screen rather than on the presentation display. What is the cause?

- A. The default MTP telephony payload is incorrect.
- B. The SIP trunk is not running on all active Cisco Unified Communications Manager nodes.
- C. MTP is not forced to be required.
- D. BFCP is not enabled.
- E. The MTP preferred codec is incorrect for content presentation.

Answer: D

NEW QUESTION 38

Which two Cisco TelePresence systems would be appropriate for an executive personal office? (Choose two.)

- A. Cisco Jabber
- B. Cisco IP Video Phone E20
- C. Cisco TelePresence EX Series
- D. Cisco Jabber Video for TelePresence
- E. Cisco TelePresence System 500

Answer: CE

NEW QUESTION 42

Which two endpoints support the multisite option? (Choose two.)

- A. C20
- B. SX10
- C. Jabber
- D. SX-20
- E. EX90
- F. EX60

Answer: DE

NEW QUESTION 47

Which video-bridging solution supports single-screen units and multiscreen systems and keeps multiscreen units grouped together logically during a call?

- A. Cisco MCU
- B. Cisco PVDM
- C. Cisco TelePresence Server
- D. Cisco TMS
- E. Cisco TCS

Answer: C

NEW QUESTION 48

Which video-room solution supports internal and external microphones for audio transmission at the same time?

- A. MX300G2
- B. SX80
- C. SpeakerTrack60
- D. C90
- E. Jabber for Windows

Answer: A

NEW QUESTION 50

On a Cisco EX90, if the camera is tilted downward toward the base of the unit, how is the image transmitted?

- A. black and white
- B. rotated 180 degrees
- C. with a 2.5x zoom
- D. Video transmission is disabled.

Answer: B

NEW QUESTION 55

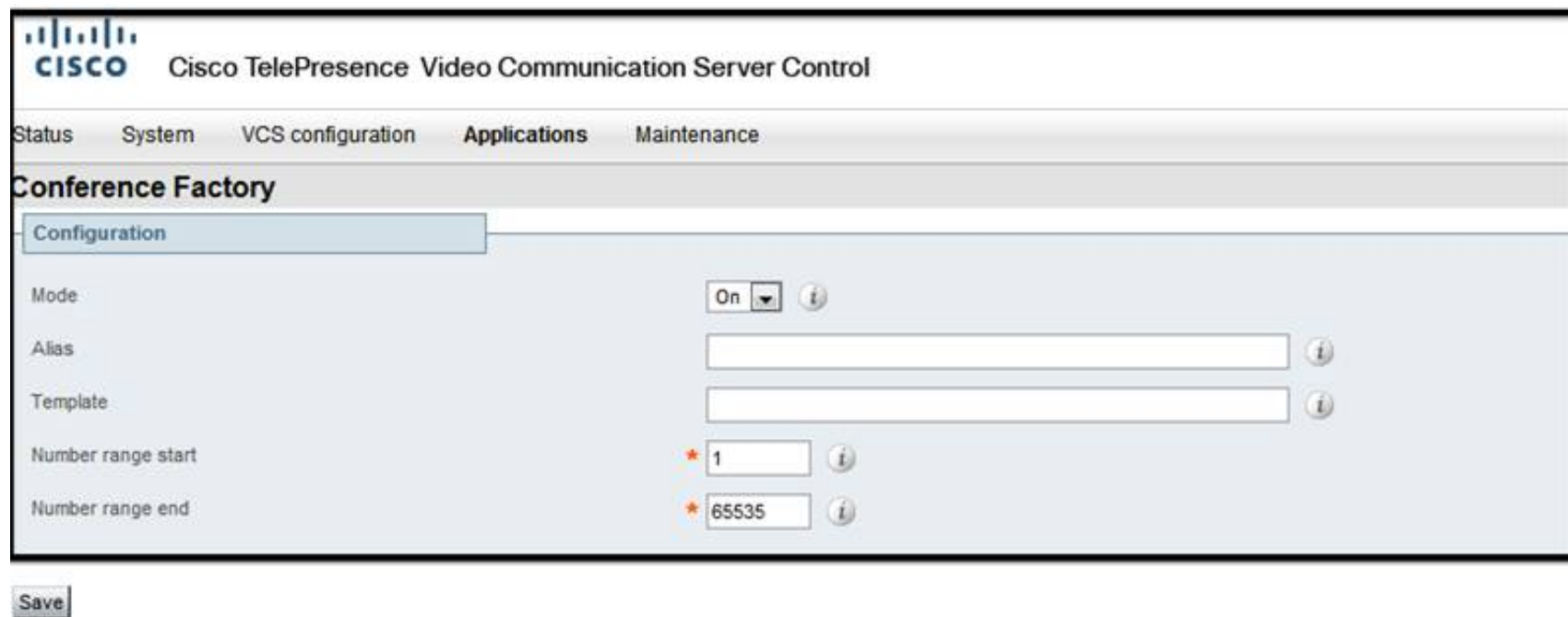
Your customer reports that new A/V equipment that plays movies cannot be displayed on their Cisco TelePresence endpoints. This A/V equipment is connected to the Cisco TelePresence codec via an HDMI cable. However, older A/V gear that uses composite cables is able to display content. What is most likely the cause of this issue?

- A. The composite cables are faulty.
- B. TIP negotiation is failing between the A/V gear and the Cisco TelePresence device.
- C. The A/V gear is using HDCP to prevent illegal copying.
- D. The operating system for the A/V gear is not compatible with the operating system of the Cisco TelePresence device.

Answer: C

NEW QUESTION 56

Refer to the exhibit.



Which multipoint feature can be configured using the exhibit that was taken from the Cisco TelePresence Video Communications Server?

- A. Multisite
- B. Multiway
- C. both Multisite and Multiway
- D. Multiway conferences between devices that are registered only to the local Cisco TelePresence Video Communications Server
- E. Multisite conferences between Cisco Video Jabber for TelePresence devices only

Answer: B

NEW QUESTION 60

A customer reports that in a CTS1300 room, a microphone switches to a segment that has no one talking. Which step is first in the troubleshooting process?

- A. Replace the microphones to stop phantom switching.
- B. Reseat the microphone cables.
- C. Recalibrate the microphones.
- D. Reboot the codec.
- E. Replace the audio expansion box because the microphones connect to an AV expansion box.

Answer: C

NEW QUESTION 64

Which three features does Cisco VCS provide? (Choose three.)

- A. native Cisco SCCP telephony integration
- B. SIP-H.323 interworking functionality
- C. native scheduling
- D. SIP trunk integration with Cisco Unified Communications Manager
- E. third-party standards-based H.323 and SIP device registration
- F. reverse proxy functionality

Answer: BDE

NEW QUESTION 66

Which two codecs are supported on the Cisco Video Surveillance 6400E IP Camera? (Choose two.)

- A. H.263
- B. H.264
- C. H.265
- D. VP8
- E. G.711
- F. MP3
- G. G.729

Answer: BE

NEW QUESTION 69

Which two options are characteristics of Cisco Jabber? (Choose two.)

- A. allows desktop sharing
- B. allows you to locate the active speaker
- C. allows instant messaging
- D. allows the One Button To Push feature

Answer: AC

NEW QUESTION 70

Which three Cisco TelePresence endpoints are considered immersive endpoints? (Choose three.)

- A. TX9000
- B. EX90
- C. C20
- D. T3
- E. SX10
- F. CTS-3000
- G. Jabber Video for TelePresence

Answer: ADF

NEW QUESTION 72

A network engineer wants to automate the monitoring of Cisco TelePresence TX systems. Which step should the engineer take first?

- A. Configure Cisco TMS on the codec.
- B. Configure Medianet on the codec.
- C. Configure NTP on the codec.
- D. Configure Multiway on the codec.
- E. Configure SNMP on the codec.

Answer: E

NEW QUESTION 73

A technician is tasked with performing a room readiness assessment in preparation for an immersive video endpoint. What are three Cisco best practices regarding lighting recommendations for the room? (Choose three.)

- A. The bulb temperature should be between 4000 and 4100K.
- B. Key lighting should be between 200 and 400 Lux with the endpoint powered on.
- C. Shoulder lighting should not exceed two times the facial lighting values with the endpoint off.
- D. Use direct lighting fixtures.

- E. Within the camera field of view, the lighting for all parts of the room should not fluctuate more than 100 Lux.
 F. Avoid using dimming light control systems.

Answer: ACE

NEW QUESTION 74

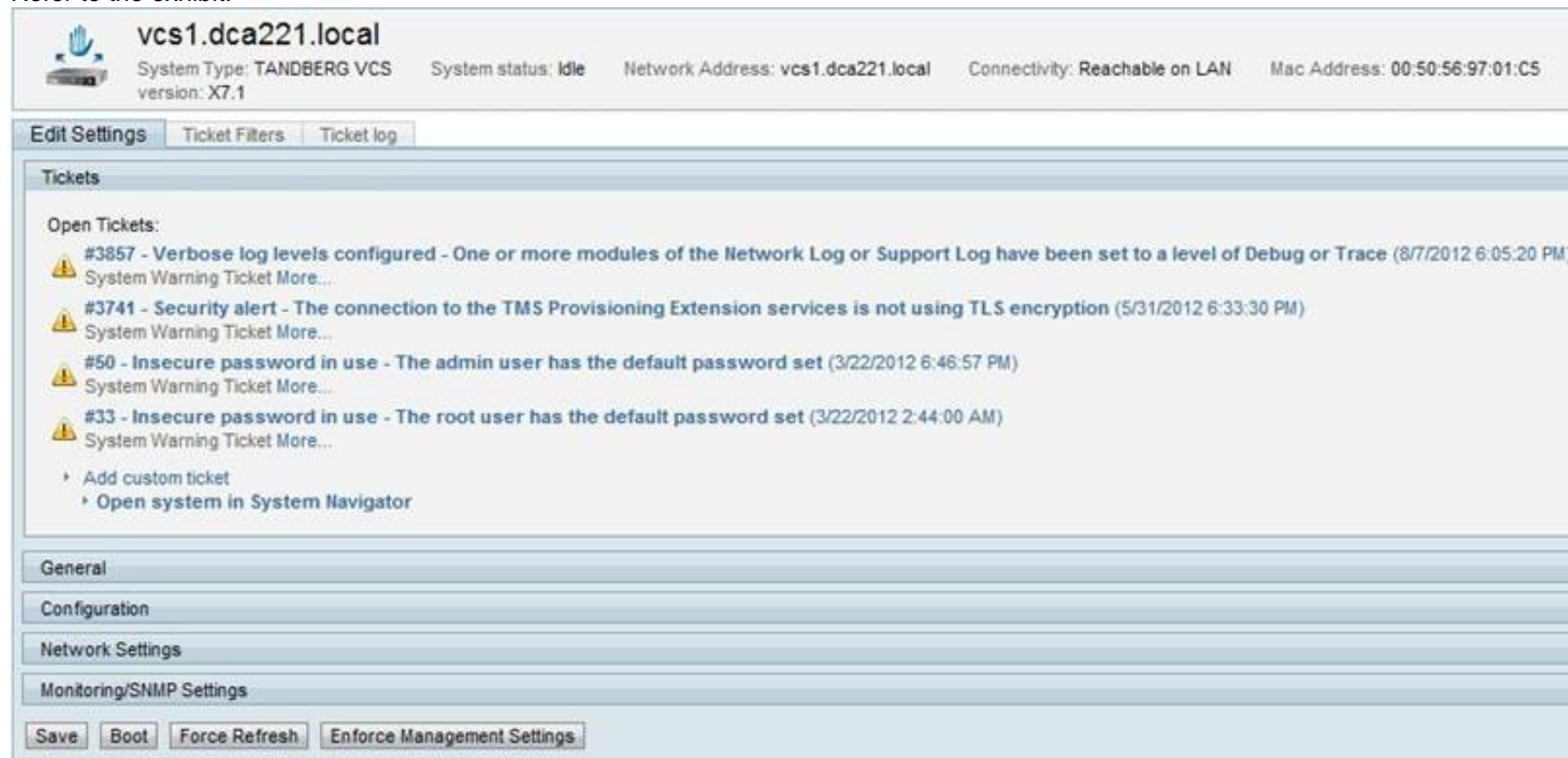
During the initial setup of the Cisco TelePresence System 500, you are required to do an initial camera setup that fails. What might be a primary reason that the failure occurs?

- A. The camera cannot focus on the target.
 B. The room is too dark.
 C. The system is too far away from the target.
 D. The cable to the camera is not connected correctly.

Answer: B

NEW QUESTION 75

Refer to the exhibit.



When the administrator clicks the ticket number of any of the open tickets, which two actions are presented to the administrator? (Choose two.)

- A. ignore ticket
 B. acknowledge ticket
 C. delete ticket
 D. close ticket
 E. escalate ticket

Answer: AB

NEW QUESTION 77

An engineer is creating a system backup on a Cisco VCS. Which two options describe characteristics of Cisco VCS backups? (Choose two.)

- A. The backup can be sent to the remote SFTP server.
 B. The backup can be encrypted with a password.
 C. The backup can be sent to additional servers in the cluster.
 D. The backup is valid for 30 days.
 E. The backup is stored in Cisco TMS.
 F. The backup is only downloadable locally.

Answer: BF

NEW QUESTION 78

Your customer has an EX60 at a home-office that is doing direct H.323 dialing. When they place calls to remote sites, they report that they cannot see video or hear audio from the remote sites. What is most likely the cause of this issue?

- A. NAT mode is not configured on the EX60.
 B. The HDMI cable that connects the EX60 to the monitor is not plugged in.
 C. A username and password must be configured on the EX60.
 D. QoS is not properly configured on the EX60.

Answer: A

NEW QUESTION 83

Which two methods can you use to update the configuration automatically using the persistent configuration settings for an endpoint using TMS? (Choose two.)

- A. Manually refresh the endpoint configuration for the Cisco TMS provisioning page.
- B. Cisco TMS can be scheduled to push a template to endpoints.
- C. User can edit the configuration manually for the endpoint from Cisco TMS.
- D. The endpoint can receive the persistent settings from Cisco TMS after each reboot.
- E. The endpoint can download the configuration via DHCP option 150.

Answer: BD

NEW QUESTION 84

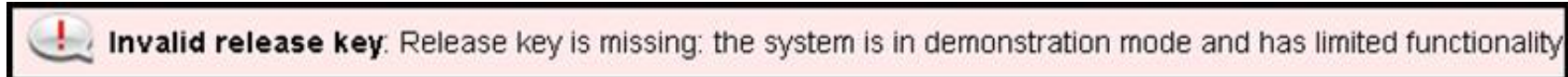
In the web interface for a Cisco VCS or Expressway running X8.2, which page allows you to enable and download logs that include the xConfiguration, xStatus, DEBUG level network logs, and packet captures of both network interfaces?

- A. Maintenance > Diagnostics > Diagnostic Logging
- B. Maintenance > Diagnostics > System Snapshot
- C. Status > Logs > Event Log
- D. Status > Logs > Configuration Log

Answer: A

NEW QUESTION 88

Refer to the exhibit.



When this alarm is seen, what is the maximum number of registrations that a Cisco VCS can support?

- A. 2500
- B. 50
- C. 3

Answer: C

NEW QUESTION 89

The firmware for the primary codec of a Cisco TelePresence System 3010 is being upgraded. Which codec CLI command could be used to check on the progress of the update?

- A. utils upgrade display
- B. utils system version
- C. show upgrade detail
- D. show system upgrade

Answer: C

NEW QUESTION 92

A technician has installed and powered on a Cisco TelePresence MCU 5320 and is connected via the console port. The technician needs to determine the IP settings that were automatically assigned via DHCP. Which command should be entered?

- A. xstatus
- B. show network eth0
- C. status
- D. help static

Answer: C

NEW QUESTION 97

You are troubleshooting an issue and you need to connect to presentation codec via CLI. Which CLI command allows you to connect to the presentation codec?

- A. utils connect presentation
- B. utils system presentation
- C. utils presentation connect
- D. utils presentation system
- E. set system presentation

Answer: B

NEW QUESTION 99

Which command causes a Cisco VCS to drop registrations for currently registered endpoints only if they are not currently in a call?

- A. xConfiguration SystemUnit Maintenance Mode: Off
- B. xConfiguration SystemUnit Maintenance Mode: On
- C. xConfiguration Zones LocalZone DefaultSubZone Registrations: "Deny"
- D. xConfiguration Registration RestrictionPolicy Mode: "DenyList"

Answer: B

NEW QUESTION 102

Your customer reports that they have had unwanted calls routing from their Cisco VCS Expressway to their ISDN gateway. Which way is recommended to prevent these calls?

- A. Configure a Registration Deny List on the Cisco VCS Expressway.
- B. Configure a Registration Allow List on the Cisco VCS Expressway.
- C. Implement a CPL on the Cisco VCS Control.
- D. Implement a CPL on the Cisco VCS Expressway.

Answer: D

NEW QUESTION 103

A technician is trying to pair a Touch 8 with a Cisco TelePresence SX20 endpoint, but the codec is not automatically listed in the touch panel. What are two possible reasons for this behavior? (Choose two.)

- A. The codec firmware version is below version TC 6.1.
- B. The codec and the Touch 8 are on separate subnets.
- C. Pairing visibility mode is not active on the codec.
- D. The codec is not compatible with a Touch 8 device.
- E. The Touch 8 is connected via the second Ethernet port on the codec.

Answer: BC

NEW QUESTION 106

Refer to the exhibit.

```
OK
xstatus call
*s Call 3 Status: Connected
*s Call 3 Direction: Outgoing
*s Call 3 Protocol: "h323"
*s Call 3 CallType: Video
*s Call 3 RemoteNumber: "5919*2345"
*s Call 3 CallbackNumber: "h323:5919*2345"
*s Call 3 DisplayName: "mcu4500"
*s Call 3 TransmitCallRate: 1152
*s Call 3 ReceiveCallRate: 1152
*s Call 3 Encryption Type: "None"
*s Call 3 PlacedOnHold: False
*s Call 3 Duration: 14
** end
```



Cisco TelePresence Video Communication Server Control

Status System VCS configuration Applications Maintenance

Registrations by device

Name	E.164	Type	Protocol
<input type="checkbox"/> 5002@osl147.local		SIP UA	SIP
<input type="checkbox"/> 5911@osl147.local		SIP UA	SIP
<input type="checkbox"/> 5912@osl147.local		SIP UA	SIP
<input type="checkbox"/> 5913@osl147.local		SIP UA	SIP
<input type="checkbox"/> 5914@osl147.local		SIP UA	SIP
<input type="checkbox"/> 5915@osl147.local		SIP UA	SIP
<input type="checkbox"/> 5916@osl147.local		SIP UA	SIP
<input type="checkbox"/> 5919@osl147.local		SIP UA	SIP
<input type="checkbox"/> 5921@osl147.local		SIP UA	SIP
<input type="checkbox"/> 5922@osl147.local		SIP UA	SIP
<input type="checkbox"/> 5923@osl147.local		SIP UA	SIP
<input type="checkbox"/> 5924@osl147.local		SIP UA	SIP
<input type="checkbox"/> 5925@osl147.local		SIP UA	SIP
<input type="checkbox"/> 5926@osl147.local		SIP UA	SIP
<input type="checkbox"/> 594@osl147.local		Gateway	H323
<input type="checkbox"/> 594@osl147.local		Gateway	H323
<input type="checkbox"/> C60 osl147 Instructor		Endpoint	H323
<input type="checkbox"/> mcu8510@osl147.local		SIP UA	SIP
<input type="checkbox"/> mcu8510@osl147.local	5919	MCU	H323
<input type="checkbox"/> multiway@osl147.local		SIP UA	SIP

Unregister Select all Unselect all

The screenshots show outputs from the xStatus of a Cisco TelePresence endpoint and the VCS registrations. What are the protocol and direction of the call, the called party, and the transmit rate of the call?

- A. h.323, incoming, 5919*2345, 1152 Kb/s
- B. h.323, outgoing, 5919*2345, 1152 Kb/s
- C. h.323, incoming, 5919*2345, 768 Kb/s
- D. sip, incoming, 5919*2345, 768 Kb/s
- E. sip, outgoing, 5919*2345, 768 Kb/s

Answer: B

NEW QUESTION 111

ACisco TelePresence VCS displays this alarm: "Root password is set to default." How can this security warning be addressed?

- A. Use the Cisco TelePresence VCS web user interface, choose Administration > User Settings, and change the root password.
- B. Use SSH to log in to the Cisco TelePresence VCS as Administrator and issue the command xconfig root set passwd.

- C. Use SSH to log in to the Cisco TelePresence VCS as Root, issue the command set password, and enter the new password when prompted.
- D. Use SSH to log in to the Cisco TelePresence VCS as Root, issue the command passwd, and enter the new password when prompted.
- E. Use the Cisco TelePresence VCS web user interface, choose Administration > System Settings, and change the root password.

Answer: D

NEW QUESTION 113

A new Cisco DX650 is not registering in the Cisco Communications Manager running version 9.1.2. The latest device package and firmware was uploaded on all Cisco Communications Manager servers in the cluster. What is most likely the cause of this issue?

- A. A cluster-wide reboot is needed to enable the functionality.
- B. You must restart the TFTP server.
- C. The firmware in the Cisco Unified Communications Manager is incorrect.
- D. The software version in the Cisco Unified Communications Manager is incorrect.

Answer: A

Explanation: Topic 4, Conferencing Concepts

NEW QUESTION 114

When configuring the Cisco TelePresence System 500 with a static IP address, where should the IP address be configured?

- A. in Cisco Unified Communications Manager after adding the Cisco TelePresence System 500 manually
- B. in the Cisco TelePresence System Administration tool
- C. in the Cisco TelePresence Management Suite after the Cisco TelePresence System 500 was added under systems
- D. Static IP address configuration is not possible
- E. Only a DHCP-provided IP address is supported.
- F. using the on-screen display

Answer: B

NEW QUESTION 115

Which ad hoc multipoint feature is supported only when properly configured and when the endpoint is registered to the Cisco VCS?

- A. Multisite
- B. Multiway
- C. WebEx enabled Cisco TelePresence
- D. Collaboration Meeting Room
- E. Cisco MCU
- F. Cisco TelePresence Server

Answer: B

NEW QUESTION 118

Which Cisco TelePresence endpoint uses only Cisco Unified Communications Manager as its call control device?

- A. SX20
- B. Cisco TelePresence System 500-32
- C. EX90
- D. C60
- E. Video Communication Server

Answer: B

NEW QUESTION 123

Which component of the Cisco TelePresence multipoint media infrastructure is intended for use only with non-immersive endpoints?

- A. Cisco TelePresence Server
- B. Cisco TelePresence System 500-32
- C. Cisco TelePresence Multipoint Switch
- D. Cisco TelePresence Multipoint Control Unit

Answer: D

NEW QUESTION 127

In a Multiway call escalation, which SIP message is sent from the Multiway initiator to the participants to provide the bridge URI?

- A. TRANSFER
- B. REFER
- C. REDIRECT
- D. 200 OK

Answer: B

NEW QUESTION 131

Which Cisco MCU feature allows a video participant to dial in to view permanent and active conferences and select a conference to join, or allow them to create a new conference?

- A. ad hoc conferencing
- B. ACD
- C. Auto Attendant
- D. preconfigured participant

Answer: C

NEW QUESTION 132

When manual discovery is used to register a Cisco TelePresence endpoint to a VCS via SIP, which two pieces of information are required to be configured on the endpoint for registration to occur, assuming that Cisco TMS and DNS are not being used? (Choose two.)

- A. option 150
- B. SIP URI
- C. proxy address
- D. H.323 alias
- E. external manager address
- F. RTP ports

Answer: BC

NEW QUESTION 134

Which three of these are valid ways to initially configure a C-Series codec in a network where DHCP is not used? (Choose three.)

- A. Tandberg Remote Control V
- B. secure copy program
- C. CLI using a console cable
- D. touchscreen interface
- E. secure web browser
- F. Telnet

Answer: ACD

NEW QUESTION 136

A large company wants to procure video conference devices that allow multipoint conferences from C-Series and immersive endpoints that are registered to a Cisco VCS and Cisco Unified Communications Manager. Which two components meet the requirements of this company? (Choose two.)

- A. Cisco TelePresence Multipoint Switch registered to Cisco VCS
- B. Cisco C-Series endpoint with a multisite option key registered to Cisco VCS
- C. Cisco TelePresence Server registered to Cisco VCS
- D. Cisco C-Series endpoint with a multisite option key registered to Cisco Unified Communications Manager
- E. Cisco TelePresence Multipoint Switch trunked to Cisco Unified Communications Manager

Answer: CE

NEW QUESTION 138

In a Cisco TelePresence conference that is hosted on a Cisco MCU, a single pane shows the person who is currently talking. What is this pane called?

- A. The host
- B. The active participant
- C. The active speaker
- D. The active floor

Answer: C

NEW QUESTION 142

Which two systems would be an appropriate solution for a traveling employee? (Choose two.)

- A. Cisco Jabber
- B. Cisco C-Series codec
- C. Cisco TelePresence EX Series
- D. Cisco Jabber Video for TelePresence
- E. Cisco TelePresence System 500
- F. Cisco IP Video Phone E20

Answer: AD

NEW QUESTION 147

Management would like to set up a permanent recurring Cisco TelePresence meeting where the team would dial into to a preconfigured number. Which meeting type should be used?

- A. scheduled conference
- B. ad hoc conference
- C. rendezvous conference
- D. multiway conference

Answer: C

NEW QUESTION 152

Which Cisco feature upscales SD and low-bandwidth video participants up to four times, allows them to appear closer to HD in a video call, and is supported on Cisco MCU and Cisco TelePresence Server multiparty solutions?

- A. ClearPath
- B. ClearVision
- C. WebEx enabled TelePresence
- D. Active Presence
- E. Individual Transcoding

Answer: B

NEW QUESTION 157

What are the best practices for maintaining a high-quality video call regarding latency, jitter, and packet loss?

- A. 20-ms one-way delay, no jitter, no packet loss
- B. less than 150-ms one-way delay, 30-ms jitter, less than 3 percent packet loss
- C. 150- to 400-ms one-way delay, 50-ms jitter, 5 percent packet loss
- D. 500-ms one-way delay, 50-ms jitter, 5 percent packet loss

Answer: B

NEW QUESTION 158

What is the correct order of steps to schedule a One Button to Push conference call between a Cisco TelePresence System 500 and a Cisco TelePresence Codec C40?

- A. Configure the One Button to Push field under device configuration for the Cisco TelePresence System 500 and Codec C40.
- B. Configure One Button to Push under Cisco TelePresence Video Communications Server > Applications > OBTP Configuration.
- C. Configure a new conference under Cisco TelePresence Management Suite > Booking New Conference > Type.
- D. The One Button to Push feature cannot be configured without a scheduling plug-in application such as Microsoft Outlook.
- E. Configure the Scheduler tool in the Cisco TelePresence Management Suite.

Answer: C

NEW QUESTION 163

A user wants to use the One Button to Push feature on a Cisco TelePresence System 500- 32 video endpoint. Which configuration tool should be used to allow the One Button to Push feature to work?

- A. Cisco Unified Communications Manager server, phones, devices, One Button to Push
- B. Cisco Gigaswitch Router, Call Manager Express, One Button to Push
- C. Cisco TelePresence Manager Suite server, new conference, set Conference type to One Button to Push
- D. Active Directory server, users, new conference, One Button to Push
- E. Cisco TelePresence Video Communication Server, new conference, calls, One Button to Push

Answer: C

NEW QUESTION 168

You have been informed from the field that a new Cisco TelePresence video endpoint has been deployed with an IPv4 address of 172.28.254.45. Which three devices could you use to see if the endpoint is registered and available for a call? (Choose three.)

- A. Cisco Unified Communications Manager server
- B. Cisco Gigaswitch Router
- C. Cisco TelePresence Manager Suite server
- D. Active Directory server
- E. Cisco TelePresence Video Communication Server
- F. Cisco 3250 Layer 2/3 Switch

Answer: ACE

Explanation: Topic 5, Mix Questions

NEW QUESTION 172

Which two feature keys are valid for both Cisco TelePresence MCU and Cisco TelePresence Server? (Choose two.)

- A. video firewall
- B. web conferencing
- C. encryption
- D. cluster support
- E. third-party interoperability

Answer: CD

NEW QUESTION 173

Which Cisco TelePresence Multipoint Control Unit Layout view mode gives prominence to one conference participant over the other conference participants while still allowing conference participants to view multiple participants at the same time?

- A. enhanced continuous presence
- B. active speaker
- C. continuous presence
- D. room switching
- E. speaker switching

Answer: A

NEW QUESTION 176

Which CLI command must the engineer run on the SX20 to verify its registration status?

- A. xCommand
- B. xStatus
- C. xConfiguration
- D. xEvent

Answer: B

NEW QUESTION 180

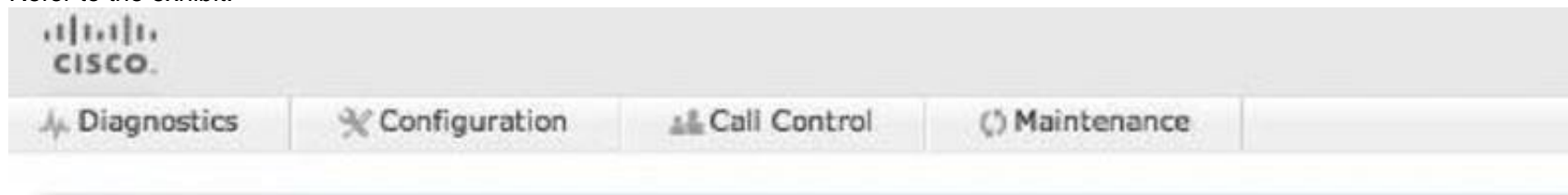
An end user using C series codec wants to change the participant layout for a meeting hosted on a Cisco TelePresence Server. What are three valid layout options available in codec web interface? (Choose three.)

- A. single screen
- B. loudest speaker
- C. rolling
- D. equal
- E. custom
- F. overlay

Answer: ADF

NEW QUESTION 183

Refer to the exhibit.



Which tab can be used in order to check the call statistics for the Cisco TelePresence Codec C60?

- A. Diagnostics
- B. Configuration
- C. Call Control
- D. Maintenance
- E. The GUI cannot be used to view call statistics.

Answer: C

NEW QUESTION 186

Which three features are supported by the Cisco Video Surveillance Encoding Server? (Choose three.)

- A. IP and analog cameras
- B. MPEG-2 and MPEG-4 encoding
- C. archiving
- D. motion detection
- E. clustering
- F. virtual matrix

Answer: ACD

NEW QUESTION 189

Which all-in-one dual-screen solution can be used for an average meeting room without the need for external monitors?

- A. MX700
- B. MX300G2
- C. EX90
- D. SX80
- E. TX9000
- F. MX200G2

Answer: A

NEW QUESTION 191

Which three standards are supported for streaming live video on Cisco TCS? (Choose three.)

- A. H.265
- B. H.261
- C. H.264
- D. H.263
- E. H.262
- F. H.270

Answer: BCD

NEW QUESTION 196

A network administrator is troubleshooting a video issue from the Cisco VCS CLI and wants to see the ongoing calls. Which command should the administrator use?

- A. xconfiguration calls
- B. xcommand calls
- C. xcalls status
- D. xstatus calls

Answer: D

NEW QUESTION 200

Refer to the exhibit.



Management would like to find out when a particular multipoint control unit feature was enabled and who enabled it. Which menu option is the most appropriate when searching for that information?

- A. Event Display Filter
- B. Audit Log
- C. Event Log
- D. Syslog

Answer: B

NEW QUESTION 201

A customer is looking for a video conference solution that includes video streaming. What are the two devices that when used together, provide streaming capability? (Choose two.)

- A. VCS
- B. TCS
- C. TS
- D. MCU 4500
- E. TMS

Answer: BD

Explanation: https://www.cisco.com/c/en/us/td/docs/voice_ip_comm/uc_system/design/guides/videodg/vidguide/infrastr.html

NEW QUESTION 203

An immersive video room requires acoustic remediation because there is noticeable reverb present. What type of acoustic paneling does Cisco recommend to provide remediation?

- A. NRC rating greater than 0.75
- B. NRC rating greater than 0.5
- C. NRC rating less than 0.75
- D. NRC rating less than 0.5

Answer: A

NEW QUESTION 208

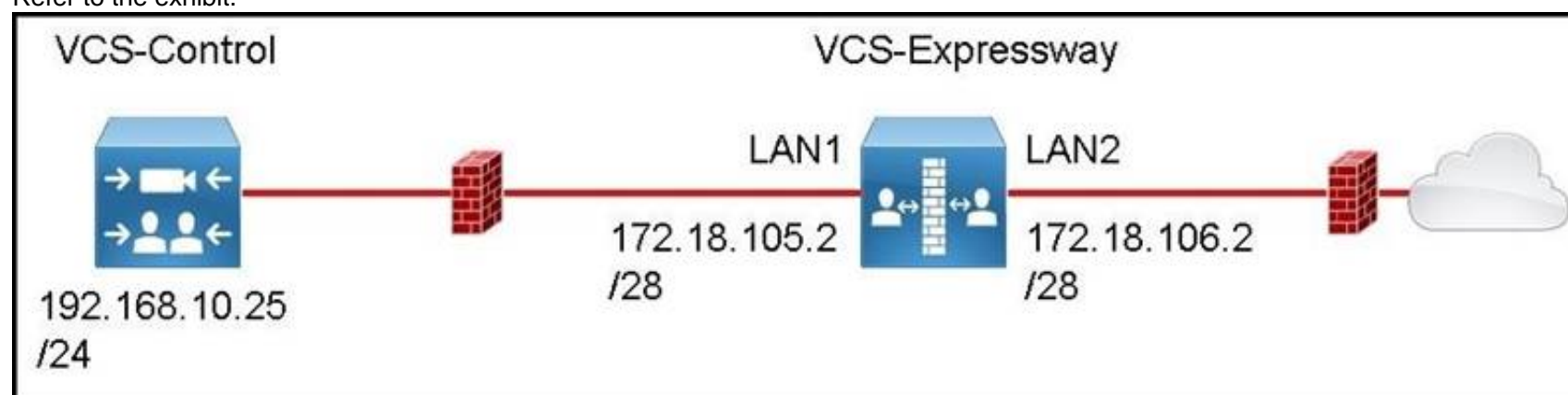
An engineer is configuring a live stream from a multiparty conference that users can watch live in their web browser. Which two products can provide native live streaming in this delivery format? (Choose two.)

- A. Cisco Video Communications Server
- B. Cisco TelePresence Server
- C. Cisco TelePresence MCU
- D. Cisco TelePresence Content Server
- E. Cisco Multiparty Media Server
- F. Cisco TelePresence Conductor

Answer: CD

NEW QUESTION 213

Refer to the exhibit.



You are deploying a Cisco VCS Expressway with the Advanced Networking option key into two separate DMZs. Gateways for all networks are the lowest usable IP address in the subnet. While you are logged in as an admin user, which command should you enter into the CLI, to enable IP routing to the Cisco VCS Control and nothing else on the internal network?

- A. xConfiguration IP Gateway: 172.18.105.1
- B. xConfiguration RouteAdd Address:192.168.10.25 PrefixLength:16 Gateway: 172.18.105.1 Interface: LAN1
- C. xCommand RouteAdd Address:192.168.0.0 PrefixLength:16 Gateway: 172.18.105.1 Interface: LAN1
- D. xCommand RouteAdd Address:192.168.10.25 PrefixLength:32 Gateway: 172.18.105.1 Interface: LAN1

Answer: D

NEW QUESTION 216

When you configure a zone for firewall traversal, which type of zone is the Cisco VCS-C configured for?

- A. client
- B. server
- C. proxy
- D. gateway
- E. neighbor

Answer: A

NEW QUESTION 217

An engineer wants to know if there is a way to determine the optical zoom of a Cisco TelePresence SX20 remotely. Which two methods will retrieve this information? (Choose two.)

- A. From the CLI, run xstatus.
- B. From the CLI, run xconfig.
- C. From the web GUI, choose Configuration > System Status > Camera.
- D. From the web GUI, choose Configuration> Camera > Status.
- E. From CLI, run xcommand camera.

Answer: AC

NEW QUESTION 220

Which two parameters of the license management set log level product_instances CLI command on the Cisco Prime License Manager are valid? (Choose two.)

- A. warning
- B. error
- C. emergencies
- D. critical
- E. alert

Answer: AB

NEW QUESTION 224

A client requires a versatile desktop video system that supports dual monitors and the multisite option. Which device should be recommended to the customer?

- A. Jabber Video client with PrecisionHD camera
- B. Cisco TelePresence EX60 system
- C. Cisco TelePresence MX200 system
- D. Cisco TelePresence EX90 system

Answer: D

NEW QUESTION 228

In this item, you will need to use all information presented to you to successfully answer the question.

Exhibit A

```

welcome to c60.dca222.test
TANDBERG Codec Release TC5.1.3.292001
SW Release Date: 2012-06-21

OK

Xcommand SystemUnit FactoryReset Confirm: yes
    
```

Exhibit B

c60.dca222.test

System Type: TANDBERG Codec C60 System status: Idle Network Address: 172.29.24.120 Connectivity: Reachable on LAN

Summary **Settings** Call Status Phone Book Connection Permissions Logs

View Settings **Edit Settings** Extended Settings Compare Settings Persistent Settings Ticket Filters

General

Name:	c60.dca222.test	Status:	Idle
System Type:	TANDBERG Codec C60	Your Access:	Read, Set Permissions, Book, Manage Calls, Edit Settings
System Usage Type:	Meeting Room	Provisioned:	<input type="checkbox"/>
System Connectivity:	Reachable on LAN	System Contact:	<input type="text"/>
Network Address:	172.29.24.120	Alert System Contact when Booked:	No
Manufacturer:	TANDBERG	Description:	<input type="text"/>
MAC Address:	00:50:60:0D:28:37		
IP Zone:	default		
Time Zone:	(GMT - 05:00) Eastern Time (US & C)		
Password:	<input type="password"/>		

Configuration

Software Version:	TC5.1.3.292001	Last Settings Backup:	Not Registered
Hardware Serial No:	F1AD46D00032	Last Settings Restore:	Not Registered

Call Settings

Maximum IP Bandwidth:	6000	E.164 Alias 1:	52924116
Max Number of Video Calls:	0	H.323 ID 1:	c60@dca222.test
Max Number of Audio Calls:	0	SIP URI 1:	sip:c60@dca222.test
Microphone:	On		
Volume:	100		

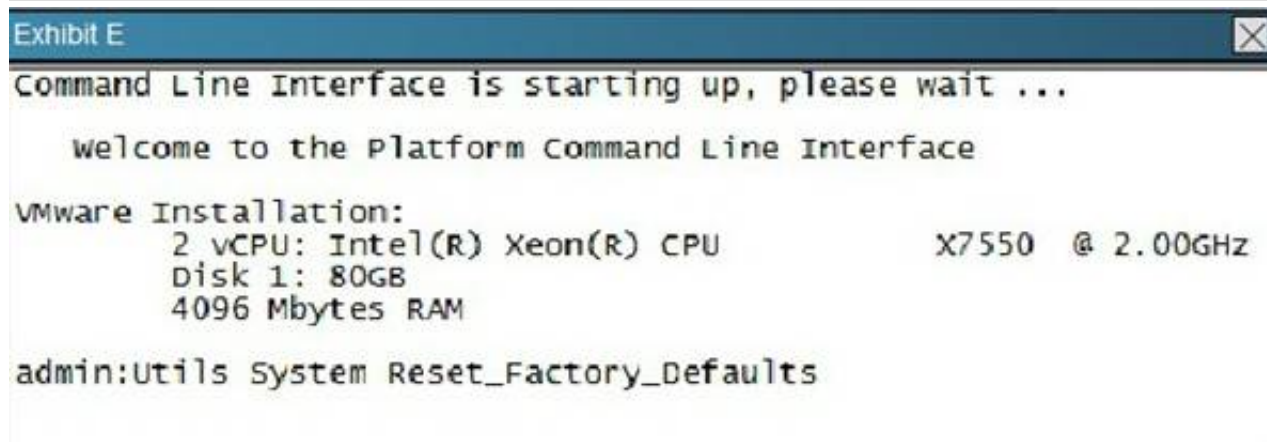
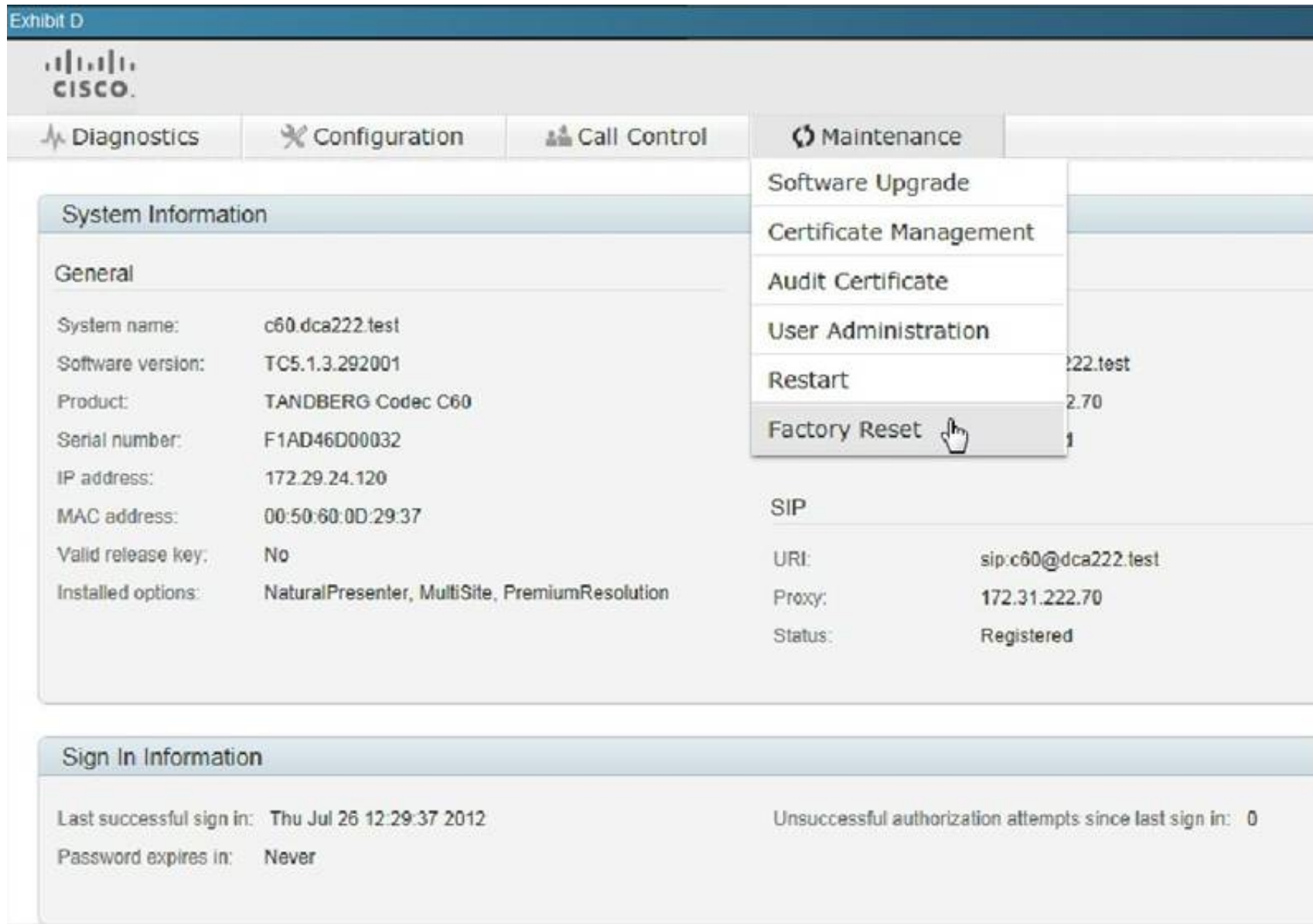
Exhibit C

```

welcome to c60.dca222.test
TANDBERG Codec Release TC5.1.3.292001
SW Release Date: 2012-06-21

OK

xcommand systemUnit ResetFactoryDefault confirm: yes
    
```



Refer to the exhibits. An administrator needs to perform a factory reset on a C-Series endpoint. What are two valid ways to accomplish this task? (Choose two.)

- A. Exhibit A
- B. Exhibit B
- C. Exhibit C
- D. Exhibit D
- E. Exhibit E

Answer: CD

NEW QUESTION 232

Which type of Cisco VCS log shows call routing decisions that are made based on Cisco VCS search rules?

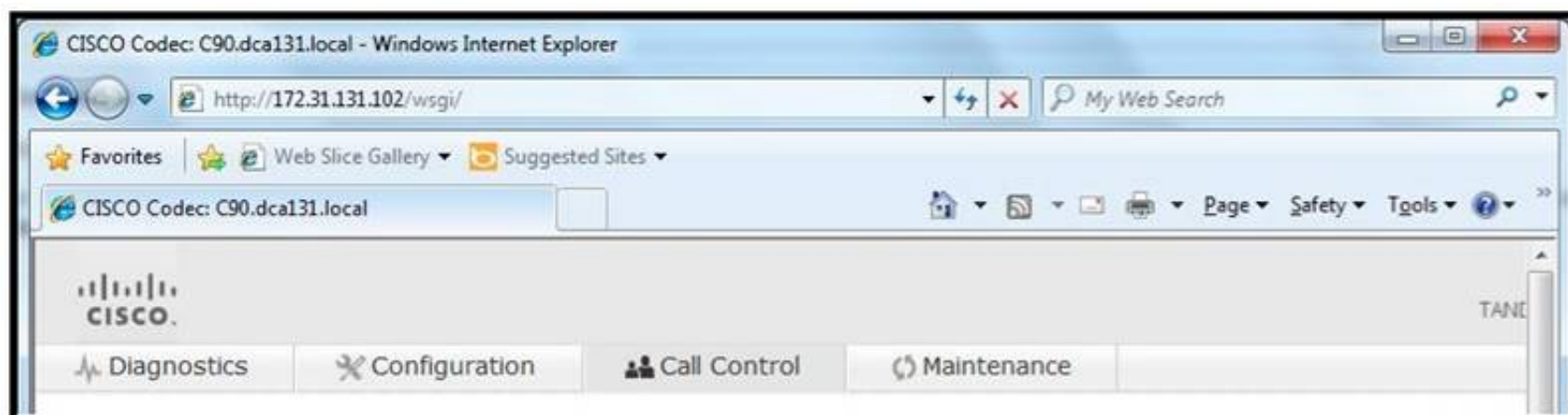
- A. Event Log
- B. Configuration Log
- C. Network Log
- D. System Log

Answer: C

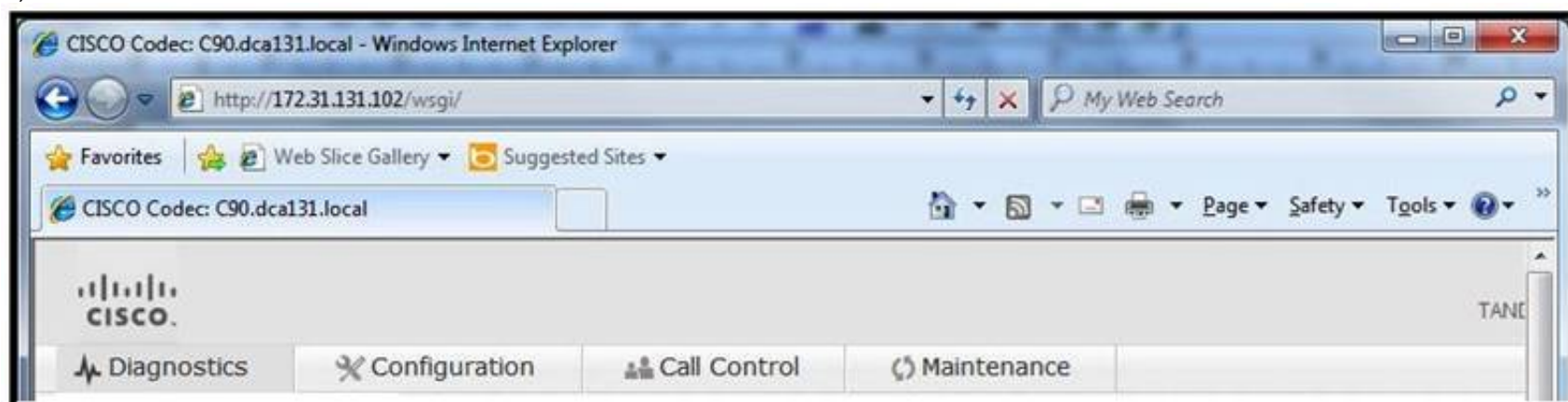
NEW QUESTION 236

An important Cisco TelePresence video multipoint call is in progress and you are getting complaints of pixilation of the video and poor audio quality on one of the involved systems. Which page would be a good place to start for troubleshooting the issue on the affected endpoint?

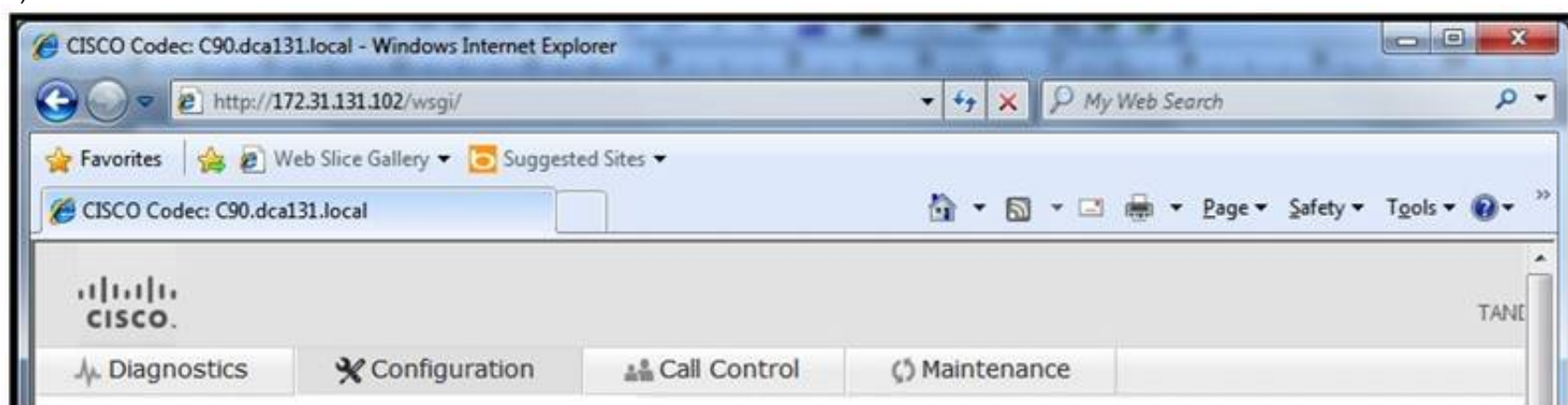
- A)



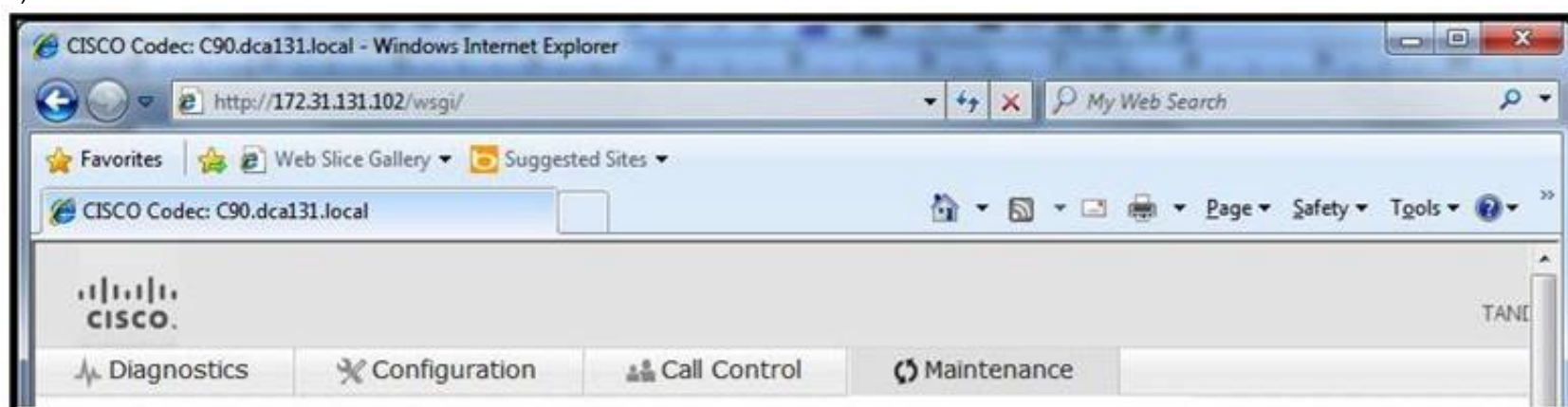
B)



C)



D)



- A. Exhibit A
- B. Exhibit B
- C. Exhibit C
- D. Exhibit D

Answer: A

NEW QUESTION 237

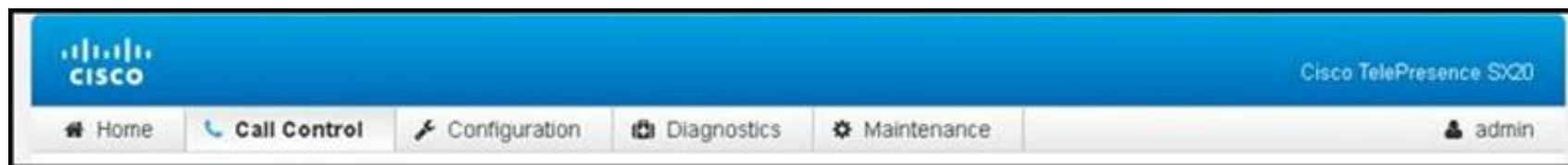
An engineer needs to configure a mobile device that registers with Cisco Unified Communications Manager to utilize voice and video services. The device is Android-based. The username in Cisco Unified Communications Manager is "rsmith." What is the proper device name for the engineer to configure?

- A. ANDRSMITH
- B. ANDSMITHR
- C. BTDRSMITH
- D. BOTRSMITH
- E. UCMRSMTH

Answer: D

NEW QUESTION 241

Refer to the exhibit.



For Cisco TelePresence endpoints with TC7.0 software, configuration backup and restore appears where?

- A. Call Control tab
- B. Configuration tab
- C. Diagnostics tab
- D. Maintenance tab
- E. Home tab

Answer: D

NEW QUESTION 242

Refer to the exhibit.



Under which tab can the registration status for the endpoint be found?

- A. Diagnostics
- B. Configuration
- C. Call Control
- D. Maintenance

Answer: A

NEW QUESTION 246

Which component of the Cisco Digital Media Suite is responsible for transcoding and transrating?

- A. Cisco DMD
- B. Cisco TMS
- C. Cisco MXE
- D. Cisco DMM

Answer: C

NEW QUESTION 249

Which desktop endpoint support 802.3af PoE?

- A. DX70
- B. DX80
- C. DX90
- D. DX650

Answer: D

Explanation: <https://www.cisco.com/c/en/us/products/collateral/collaboration-endpoints/desktop-collaboration-experience-dx>

NEW QUESTION 254

Refer to the exhibit.

Alarms		
Alarm	Description	
<input type="checkbox"/> Configuration warning	Expected default link between the Default Subzone and the Cluster Subzone is missing	
<input type="checkbox"/> Configuration warning	Expected default link between the Default Subzone and the Default Zone is missing	
<input type="checkbox"/> Configuration warning	Expected default link between the Default Subzone and the Traversal Subzone is missing	
<input type="checkbox"/> Configuration warning	Expected default link between the Traversal Subzone and the Default Zone is missing	

Which CLI command should be run to resolve these alarms on a Cisco VCS?

- A. xcommand DefaultValuesSet
- B. xconfiguration DefaultLinksAdd
- C. xcommand DefaultLinksAdd
- D. xconfiguration DefaultValuesSet

Answer: C

NEW QUESTION 255

Refer to the exhibit.

DefaultTransport	TCP
DisplayName	
Line	Private
Mailbox	
Outbound	Off
TlsVerify	On
Type	Standard
URI	8800@company.com

Which kind of profile is shown?

- A. TC WebAdmin H.323 Profile
- B. TC WebAdmin SIP Profile
- C. TX WebAdmin SIP Profile
- D. TC WebAdmin Conference Profile

Answer: B

NEW QUESTION 258

In this item, you will need to use all information presented to you to successfully answer the question.

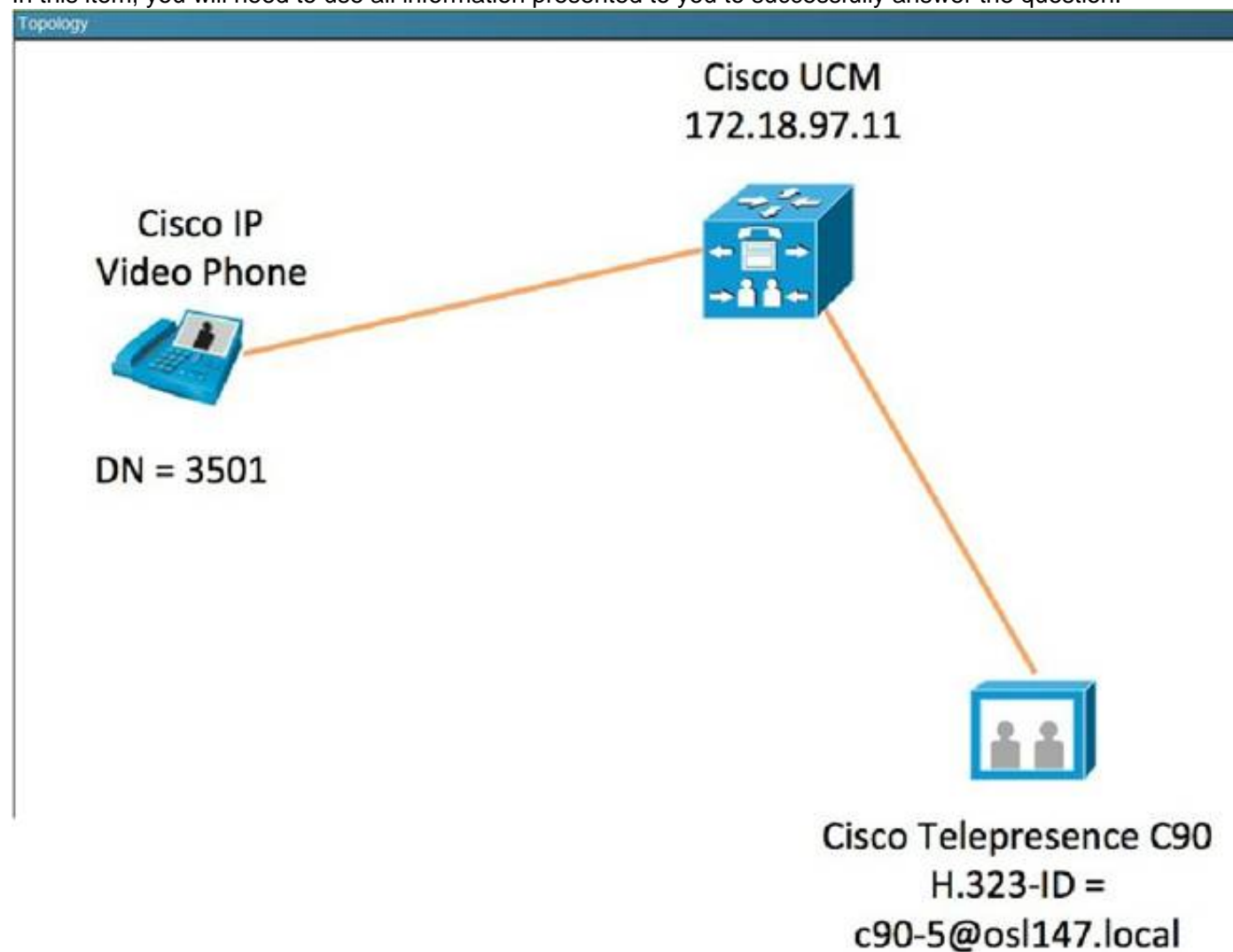


Exhibit2

CISCO. TANDBE

Diagnostics Configuration Call Control Maintenance

Advanced Configuration

Search ...

- Audio
- Cameras
- Conference 1
- Experimental
- FacilityService
- GPIO
- H323**
- Network 1
- NetworkPort 2
- NetworkServices
- Phonebook Server 1
- Provisioning

H323

NAT

Address (Length must be from 0 to 64)

Mode

Profile 1

CallSetup Mode

PortAllocation

Authentication

LoginName (Length must be from 0 to 50)

Exhibit 2

Category	Setting	Value	Notes
Profile 1	CallSetup Mode	Gatekeeper	
	PortAllocation	Dynamic	
	Authentication		
	LoginName		(Length must be from 0 to 50)
	Mode	On	
	Password	***	(Length must be from 0 to 50)
	Gatekeeper		
	Address	172.18.97.11	(Length must be from 0 to 255)
	Discovery	Manual	
	H323Alias		
	E164		(Length must be from 0 to 30)
	ID	c90-5@cs1147.local	(Length must be from 0 to 49)

The Cisco Telepresence Codec C90 is unable to call the Cisco IP Video Phone. Assuming that the calling search space has been configured correctly, which of these can cause this issue?

- A. The Cisco Telepresence Codec C90 can only be registered to a Cisco Telepresence Video Communication Server.
- B. A multipoint control unit is required in order for the call to work.
- C. The Cisco Telepresence Codec C90 can only be registered as a SIP endpoint to Cisco Unified Communications Manager.
- D. H.323 is not supported.
- E. URI dialing has not been configured on Cisco Unified Communications Manager.
- F. The Cisco Telepresence Codec C90 Profile 1 > CallSetupMode must be configured as a gateway since Cisco Unified Communications Manager does not have a gatekeeper functionality.
- G. The Cisco Telepresence Codec C90 is not registered as a SIP endpoint on Cisco Unified Communications Manager.
- H. The Cisco Telepresence Codec C90 needs to be registered as both SIP and H.323.

Answer: E

NEW QUESTION 262

In which two locations can you find registration information for a video endpoint? (Choose two.)

- A. from the endpoint touch panel on the Settings > System Information screen
- B. from the endpoint web interface on the Home screen
- C. from the Cisco VCS in the Status > System screen
- D. from the Cisco TMS on the Systems > Provisioning screen

Answer: AB

NEW QUESTION 265

A customer is unable to receive calls on the EX90 endpoint, but can make outbound calls. The endpoint uses CUCM for call control and registration. If the engineer only has remote access to the EX90 and CUCM, what are the next two troubleshooting steps? (Choose two.)

- A. Check CUCM to see if the extension is in a reachable partition.
- B. Check CUCM to see if the endpoint has the correct Device Calling Search Space
- C. Check CUCM to see if the endpoint is registered
- D. Check the EX90 System Status
- E. Check EX90 DND Status via WebAdmin

Answer: CD

NEW QUESTION 270

Components of Digital Media Suite for created playlists:

- A. DMM
- B. TMS
- C. DMD
- D. MXE

Answer: A

NEW QUESTION 272

Which three of these are functions of the Cisco TelePresence Management Suite? (Choose three.)

- A. automatic software update and release keys
- B. intelligent call routing engine
- C. provisioning a Cisco TelePresence System endpoint
- D. tracing SIP and H.323 calls
- E. managing phonebooks for endpoints that are registered to the Cisco Unified Cisco Unified Communications Manager
- F. rebooting endpoints that are registered to the Cisco TelePresence Video Communications Server

Answer: ABF

NEW QUESTION 277

Which two Cisco TelePresence endpoints support hosting embedded multisite conferences? (Choose two.)

- A. sx20
- B. MX800
- C. DX70
- D. DX80
- E. Jabber Video for Cisco TelePresence

Answer: AB

Explanation: For reference, the below endpoints support Multisite:

MX200/300 G2

MX700/800

SX20/80

NEW QUESTION 282

A network administrator is asked to configure a video conference using the Cisco TelePresence MCU 5300. There is a requirement for participants to start with the same layout when joining the conference. How can this goal be accomplished?

- A. Layouts cannot be customized on the MCU 5300.
- B. Configure a custom layout for each user individually.
- C. Configure a custom layout and apply the layout to all new participants.
- D. Allow each endpoint to configure its own layout.

Answer: C

NEW QUESTION 286

ECDS is a solution that provides which of the following benefits?

- A. Video on demand capabilities
- B. Audio conference resources
- C. Content distribution management
- D. WAN optimization

Answer: C

NEW QUESTION 288

Which of these devices supports POE 802.1af?

- A. Cisco 7975
- B. Cisco 7960
- C. Cisco 7945
- D. Cisco 7940

Answer: A

NEW QUESTION 293

A network administrator is manually configuring a Cisco TelePresence MX300 endpoint. Which two pieces of information must the administrator introduce, in order for the system to properly register to a Cisco Unified Communications Manager or to a Cisco TelePresence Video Communications Server? (Choose two.)

- A. the MAC address of the Cisco TelePresence MX300 endpoint
- B. a SIP URI
- C. the name of the Cisco Unified Communications Manager server or Cisco VCS server
- D. an IP address for the endpoint

Answer: AB

NEW QUESTION 296

An engineer is deploying a Cisco TelePresence Touch 8 controller for a Cisco TelePresence SX20. Which two steps are required as part of this process? (Choose two.)

- A. Connect the cable from the Touch 8 controller to the Cisco TelePresence SX20.

- B. Connect the Touch 8 controller to the power adapter and connect the adapter to the network.
- C. Connect the Touch 8 controller to the secondary network adapter on the Cisco TelePresence SX20.
- D. Reboot the Cisco TelePresence SX20.
- E. Hold the mute button down for 20 seconds while you power on the Touch 8 controller.

Answer: CE

NEW QUESTION 297

Which of these needs to be enabled in Cisco Unified Communications Manager in order for the Cisco TelePresence System 500-32 to be able to share a presentation with a Cisco TelePresence System Codec C40 endpoint that is registered to a VCS?

- A. Allow iX application media
- B. Send send-receive SDP in mid-call invite
- C. Allow presentation sharing using BFCP
- D. Allow presentation sharing using H.235
- E. Deliver conference bridge identifier

Answer: C

NEW QUESTION 300

A desktop video endpoint is needed that can support a PrecisionHD camera design and a built-in display, and is Bluetooth-ready and multisite-capable. Which desktop endpoint supports all of these requirements?

- A. SX20
- B. EX60
- C. SX80
- D. EX90

Answer: D

NEW QUESTION 302

You have been informed from the field that a new Cisco TelePresence video endpoint has been deployed with an IPv4 address of 172.28.254.45. You need to check for connectivity from the Cisco Unified Communications Manager server. Which command should be entered to check for network connectivity?

- A. utils network traceroute newsystem.domain254.local
- B. utils network ping 172.28.254.45
- C. ping 172.28.254.45
- D. traceroute 172.28.255.255
- E. utils network host cucm.osl147.local

Answer: B

NEW QUESTION 303

Which command returns the Cisco VCS to its factory default settings?

- A. write erase
- B. factory-default
- C. xCommand SystemUnit FactoryReset Confirm: Yes
- D. utils SystemUnit FactoryReset Confirm: Yes
- E. factory-reset

Answer: E

NEW QUESTION 306

Which option is an immersive endpoint?

- A. Cisco TelePresence EX90
- B. Cisco TelePresence TX9000
- C. Cisco TelePresence SX10
- D. Cisco TelePresence DX70

Answer: C

NEW QUESTION 308

Which three features does a Cisco TelePresence Content Server provide that a Cisco MCU cannot? (Choose three.)

- A. conference bridge virtualization support
- B. multiple conference layouts
- C. resource optimization via conductor
- D. 720p resolution at 60 fps
- E. 1080p resolution at 60 fps
- F. multiscreen immersive room endpoint support

Answer: ACF

NEW QUESTION 311

An engineer is selecting a digital media player and must ensure that there are Ethernet downlink ports. Which model has these ports?

- A. 4310 DMP
- B. Edge 340 DMP
- C. Edge 300 DMP
- D. 4400 DMP

Answer: C

NEW QUESTION 315

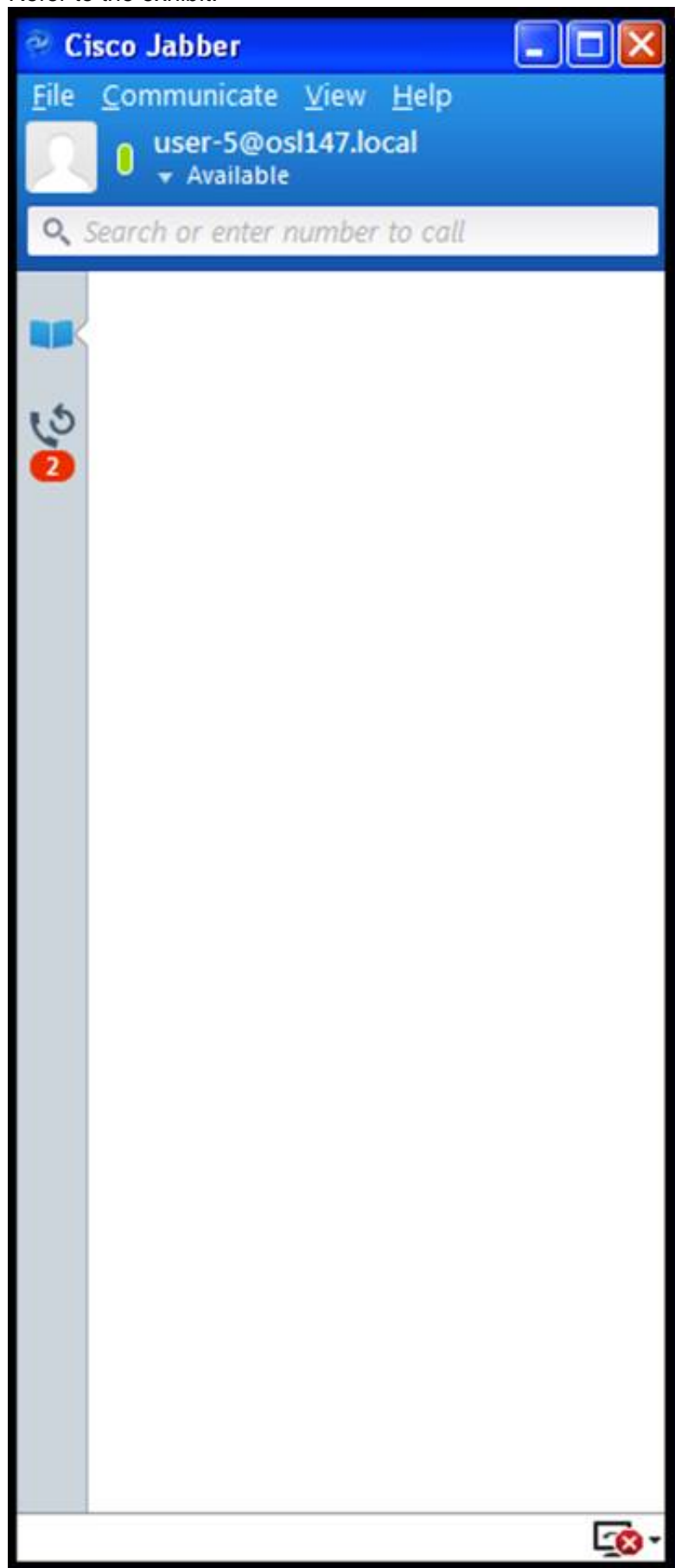
To which Ethernet port on a Cisco TelePresence System (500/1x00/1300/3xx0) endpoint would a technician need to connect to manually assign a static IP address for first-time setup?

- A. IP phone port
- B. network port
- C. camera port
- D. auxiliary network port

Answer: D

NEW QUESTION 319

Refer to the exhibit.



Which two of these can cause the phone status error icon that is shown in the exhibit? (Choose two.)

- A. The Cisco Unified Communications Manager IM and Presence Service is not available.
- B. The username and password in Cisco Jabber phone services are misconfigured.
- C. The Cisco Jabber initial audio and video settings need to be set.
- D. There is no DN configured for the Cisco Unified Client Services Framework in Cisco Unified Communications Manager.
- E. The Cisco Jabber does not have the correct phone button template and hence cannot register to the Cisco Unified Communications Manager.

F. The called user presence status is unknown.

Answer: BD

NEW QUESTION 324

ACisco TelePresence System 1300 Series endpoint is in the process of booting and the engineer notices a red "X" on the screen for Step 6 in the boot process. What does this red "X" indicate?

- A. The endpoint failed to load its firmware.
- B. There is an error with compact flash.
- C. The endpoint could not obtain an IP address via DHCP.
- D. The touch panel is malfunctioning.

Answer: B

NEW QUESTION 328

How to monitor events and alarms generated on CUCM?

- A. use a syslog server
- B. configure and use a syslog server
- C. use the CUCM RMT
- D. use a Cisco Prime Collaboration Provisioning

Answer: B

NEW QUESTION 333

An engineer is deploying a Cisco TelePresence Content Server. Which two services are provided by this product? (Choose two.)

- A. video storage
- B. multiconferencing
- C. scheduler
- D. video conferencing
- E. video recording
- F. video overlay

Answer: AE

NEW QUESTION 338

An engineer is configuring Cisco TCS to record video conferences. The customer's requirement is to configure 30 recording aliases and to enable automatic creation of future aliases. Which two configurations are required for this solution? (Choose two.)

- A. SIP registration between Cisco TCS and Cisco VCS
- B. configuring recording alias settings to copy on Cisco TCS
- C. custom system call configuration on Cisco TCS
- D. SIP registration between Cisco TCS and Cisco TelePresence MCU
- E. H.323 registration between Cisco TCS and Cisco VCS

Answer: CE

NEW QUESTION 343

The features that Telepresence Server has and MCU don't have: (Choose three.)

- A. Video Compositing
- B. auto-attendant conference menu
- C. active presence
- D. multiscreen endpoint support
- E. multiple layouts
- F. automatic lecture mode
- G. virtualization

Answer: CDG

NEW QUESTION 344

Cisco Video Surveillance Video Encoder cards perform which function?

- A. the ability to use existing analog equipment with an IP-enabled video surveillance system
- B. the ability to convert low-resolution video to high-definition video for video surveillance
- C. the ability to stream digital media to digital media in an IP-enabled video recording environment
- D. the ability to encrypt raw video signals to secure video signals

Answer: A

NEW QUESTION 348

On a Cisco C-Series codec, where would a technician go to configure the wallpaper?

- A. Configuration > User Administration
- B. Configuration > Personalization
- C. Configuration > Peripherals
- D. Configuration > System Configuration

Answer: B

NEW QUESTION 353

Which protocol is used to monitor active voice call quality?

- A. RTCP
- B. RTP
- C. QoS
- D. STP
- E. SDP

Answer: A

NEW QUESTION 357

A network engineer wants to check the local system call ID on a Cisco TelePresence Immersive System. Which CLI command should the engineer use?

- A. show call statistics addin
- B. show call statistics all
- C. show call statistics audio
- D. show call status
- E. show call statistics video

Answer: D

NEW QUESTION 360

Which three products are compatible with Digital Media Manager? (Choose three.)

- A. Media Delivery Engine
- B. Interactive Experience Client
- C. Show and Share
- D. Cast
- E. Digital Signs
- F. Stadium Vision Director

Answer: CDE

NEW QUESTION 364

A customer owns three Codian 5300 MCUs with several video endpoints. Users complain that they are getting multipoint control unit port capacity errors when scheduling video conferences in Cisco TMS. What can be done to correct these errors automatically?

- A. Enable the Automatic MCU Cascading option in the Cisco TMS Conference Settings.
- B. Install a Cascading option key on the Cisco TMS server.
- C. Install a Cisco TelePresence Conductor server.
- D. Install cascaded multipoint control units.

Answer: C

NEW QUESTION 369

An engineer must pull logs from an Cisco EX90 Codec for a Call setup issue. The engineer opens a Telnet session to the codec and enters the log ctx SipPacket debug 9 command. The engineer places a test call, but sees no debugs on the console. Which action must the engineer take to review the logs?

- A. SSH into the codec to view the logs
- B. Enter the log ctx SipPacket debug all command
- C. Enter the log output on command.
- D. Collect logs from the web interface.

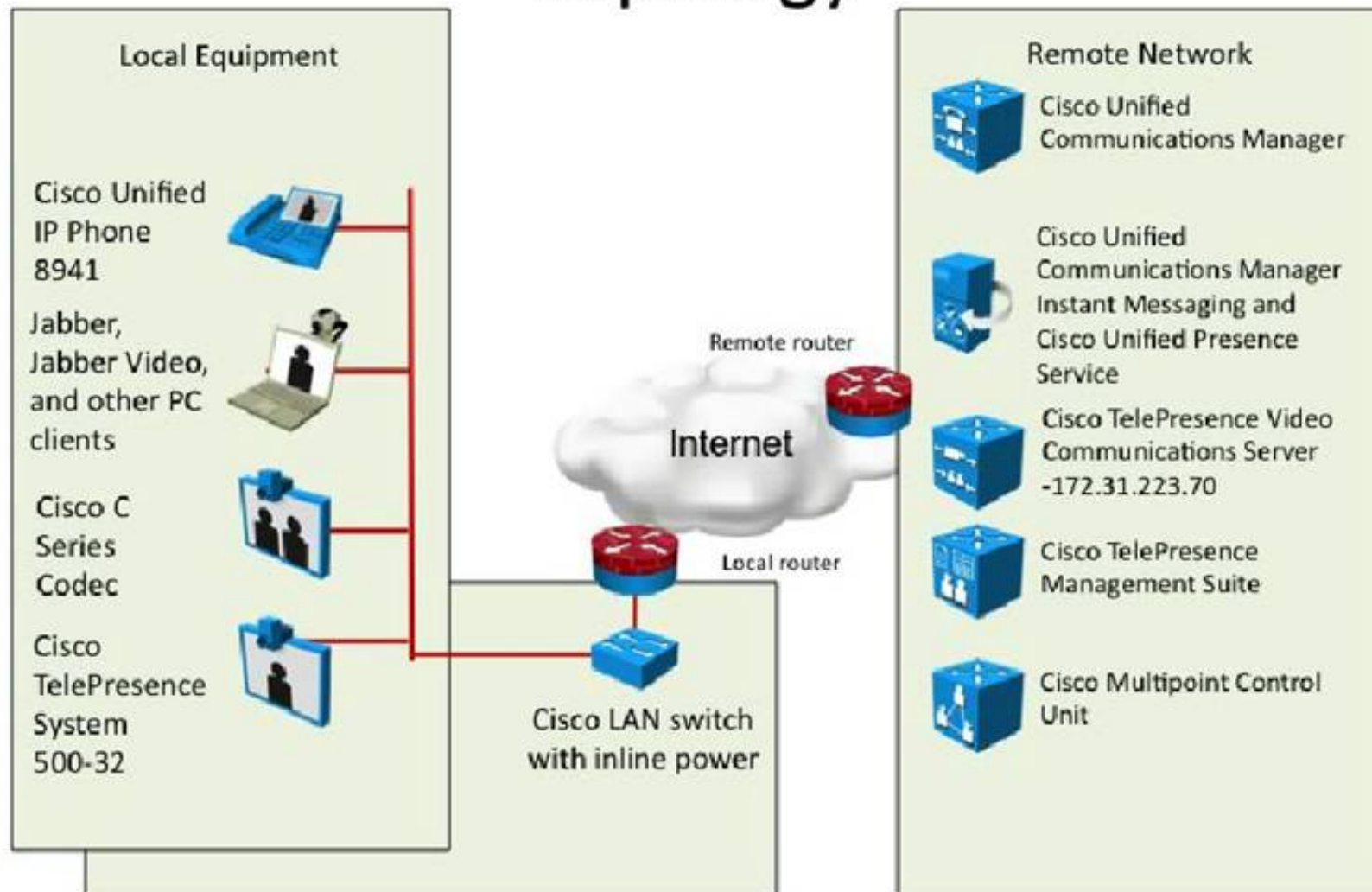
Answer: C

NEW QUESTION 371

In this item, you will need to use all information presented to you to successfully answer the question.

Topology

Topology



DHCP Config

! Local Router DHCP Configuration

```
ip dhcp pool Data
network 172.29.2.0 255.255.255.0
default-router 172.29.2.1 255.255.255.0

ip dhcp pool VoiceVideo
network 172.29.1.0 255.255.255.0
default-router 172.29.1.1 255.255.255.0
option 150 172.16.147.30
```



```
xConfig
*c xconfiguration from the Codec

xconfig network 1
*c xConfiguration Network 1 VLAN Voice Mode: Off
---snip ---
*c xConfiguration Network 1 DNS Server 1 Address: "172.31.250.5"
*c xConfiguration Network 1 DNS Server 2 Address: "172.16.250.5"
*c xConfiguration Network 1 DNS Server 3 Address: "172.20.250.5"
*c xConfiguration Network 1 DNS Server 4 Address: "198.6.1.4"
*c xConfiguration Network 1 DNS Server 5 Address: ""
*c xConfiguration Network 1 DNS Domain Name: "dca223.local"
-- snip --
*c xConfiguration Network 1 MTU: 1360
*c xConfiguration Network 1 TrafficControl Mode: On
*c xConfiguration Network 1 RemoteAccess Allow: ""
*c xConfiguration Network 1 IPv4 SubnetMask: "255.255.255.128"
*c xConfiguration Network 1 IPv4 Gateway: "172.29.1.1"
*c xConfiguration Network 1 IPv4 Address: "172.29.1.221"
-- snip --
*c xConfiguration NetworkServices H323 Mode: On
*c xConfiguration NetworkServices SIP Mode: On
*c xConfiguration NetworkServices NTP Mode: Manual
*c xConfiguration NetworkServices NTP Address: "172.16.250.5"
```

The C-Series endpoint (codec) does not register with the Video Communication Server that is located in a different network. Based on the exhibits, what could be causing the issue?

- A. The subnet mask on the codec is incorrect.
- B. The ip address of the codec is incorrect.
- C. The interface that the codec is in is in the wrong VLAN.
- D. The codec did not receive a DHCP address from the DHCP server.

Answer: A

Explanation: The subnet mask configured on the codec is 255.255.255.128, when it should be 255.255.255.0.

NEW QUESTION 374

A customer wants to record Cisco TelePresence conferences with the ability to alter the video format and add captions. Which two products are recommended to accomplish this goal? (Choose two.)

- A. Show and Share
- B. Digital Media Manager
- C. Interactive Experience Manager
- D. Media Experience Engine
- E. TelePresence Content Server

Answer: DE

NEW QUESTION 376

Refer to the exhibit.

```
v=0
o=CISCO 1376584196 1376584196 IN IP4 192.168.1.4
s=-
i=Cisco MCU 5310 v4.4 (3.42)
c=IN IP4 192.168.1.5
b=AS:2048
t=0 0
m=audio 50000 RTP/AVP 113
a=rtpmap:113 MP4A-LATM/90000
a=fmtp:113 profile-level-id=24;object=23;bitrate=96000
a=sendrecv
m=video 50002 RTP/AVP 126
a=rtpmap:126 H264/90000
a=fmtp:126 profile-level-id=42e014;max-mps=108000;max-fs=3600;max-dpb=5400;max-fps=6000;packetization-mode=1
a=sendrecv
a=content:main
a=label:11
m=video 50008 RTP/AVP 126
a=rtpmap:126 H264/90000
a=fmtp:126 profile-level-id=42e014;max-mps=27000;max-fs=3600;max-dpb=1350;max-fps=6000;packetization-mode=1
a=sendrecv
a=content:slides
a=label:12
```

In the SDP that is displayed, to which IP address and port should the receiving end send its content video channel media?

- A. 192.168.1.4:2048
- B. 192.168.1.4:50000
- C. 192.168.1.5:50002
- D. 192.168.1.5:50008

Answer: D

NEW QUESTION 378

Which option is the Cisco recommended minimum viewing distance for a 52" monitor installed in a video conferencing room?

- A. 1.5 m
- B. 3.0 m
- C. 2.5 m
- D. 2.0 m

Answer: A

NEW QUESTION 382

You have installed a C-Series endpoint in an office where DHCP is not supported. At a minimum, which four network items must be configured for the endpoint to be able to register with H.323 on a Cisco TelePresence Video Communication Server located at the external headquarters location? (Choose four.)

- A. unique IPv4 address
- B. subnet mask
- C. default gateway
- D. Cisco VCS IPv4 address
- E. Active Directory IPv4 address
- F. SMTP server IPv4 address

Answer: ABCD

NEW QUESTION 384

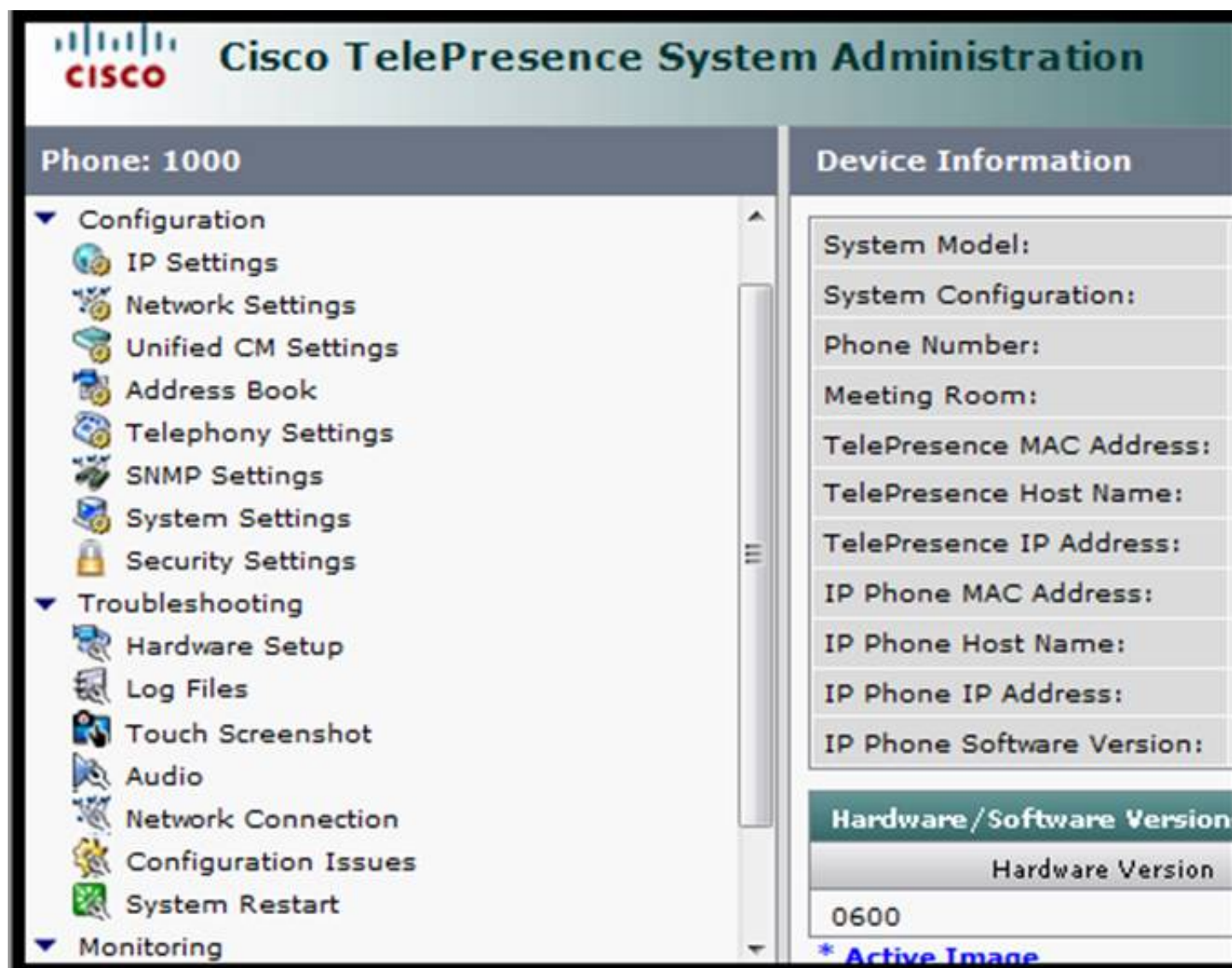
Which endpoint use for multiparty with presentation capability and without centralized bridge?

- A. Jabber
- B. SX20
- C. 7800
- D. DX650

Answer: B

NEW QUESTION 388

Refer to the exhibit.



Which option performs a factory reset of a Cisco TelePresence System endpoint?

- A. Configuration > System Settings
- B. Configuration > Security Settings
- C. Troubleshooting > Hardware setup
- D. Monitoring
- E. Troubleshooting > Configuration Issues
- F. Troubleshooting > System Restart
- G. ACisco TelePresence System endpoint can be reset only via CLI.

Answer: E

NEW QUESTION 389

The command xCommand Security FIPSMODE Activate is issued to a Cisco TelePresence C-Series codec. Management wants to reverse the effects of this command. Which two methods could be used for this purpose? (Choose two.)

- A. From the touch screen, disable FIPS mode in the Administrator Settings menu.
- B. From the touch screen, perform a factory reset from the Administrator Settings menu.
- C. From the touch screen, disable all security settings from the Administrator Settings menu.
- D. Use SSH to connect to the system and enter the xCommand Security FIPSMODE Deactivate command.
- E. Use Telnet to connect to the system and enter the xCommand SystemUnit FactoryReset Init command.
- F. Use SSH to connect to the system and enter the xCommand SystemUnit FactoryReset Confirm: Yes command.

Answer: BF

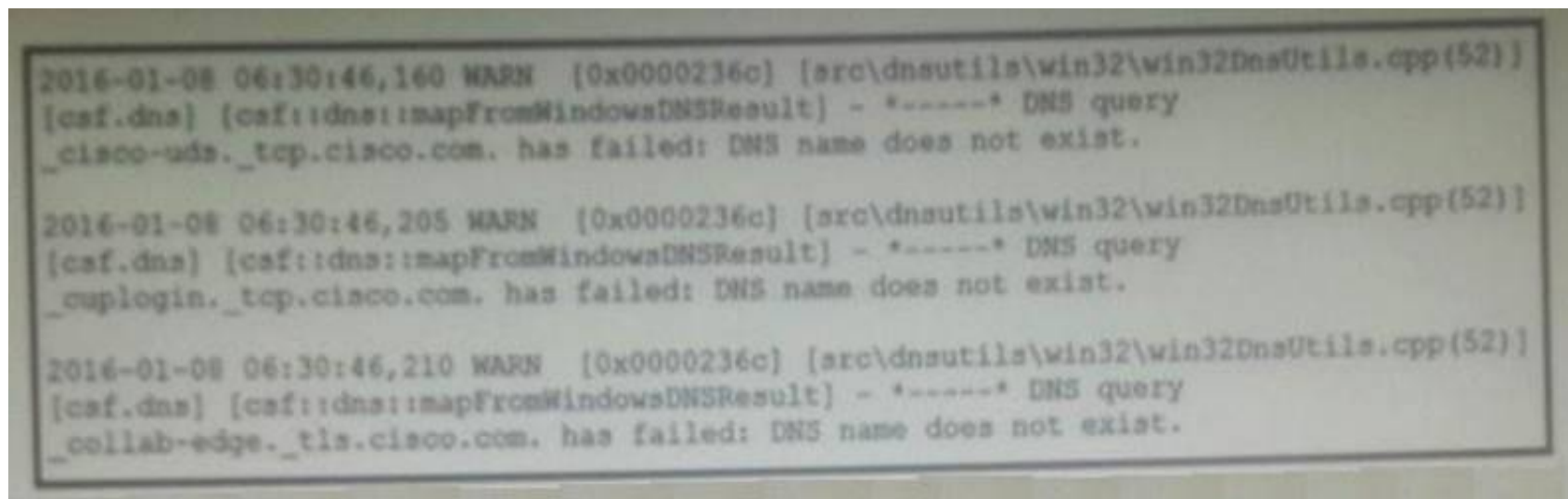
NEW QUESTION 393

A video engineer needs to locate the running version of the Cisco VCS. Which tab contains this information?

- A. System
- B. Applications
- C. Configuration
- D. Status

Answer: A

NEW QUESTION 397



Refer to the exhibit. When a user cannot log into the Cisco Jabber client, the log file from a Windows Jabber client on an internal network is shown. Which SRV must the DNS administrator create to resolve the problem?

- A. _collab-edge
- B. _cisco-uds
- C. _sip
- D. _sips

Answer: A

NEW QUESTION 402

Which means this command: set audio aec enable?

- A. aec codec enabled
- B. echo cancelation
- C. noise cancelation
- D. call economy bandwidth enable

Answer: B

NEW QUESTION 403

Which two of these are required in order to complete the password recovery of a Cisco TelePresence System endpoint? (Choose two.)

- A. must have FTP enabled on the endpoint
- B. must have SSH enabled on the endpoint
- C. must have the security question answer for the endpoint
- D. must be in the same room as the main display
- E. must have SFTP enabled on the endpoint
- F. must call Cisco TAC for the security code

Answer: BD

NEW QUESTION 405

Which two methods can be used to set the default call protocol of a Cisco TelePresence endpoint running TelePresence codec firmware? (Choose two.)

- A. Use the GUI and set System > H.323 > Settings > Default Call Protocol > H.323.
- B. Use the CLI command xConfiguration Conference 1 DefaultCall Protocol: H323.
- C. Use the CLI command Conference Default Protocol: H323.
- D. Use the CLI command Default Protocol: H323.
- E. Use the GUI and set Configuration > System Configuration > Conference > DefaultCall > H.323.

Answer: BE

NEW QUESTION 407

Which Cisco Video Surveillance product contains the Cisco Video Surveillance Encoding Server?

- A. Video Communications Server
- B. Cisco Video Surveillance Operations Manager
- C. Cisco Video Surveillance Media Server
- D. Cisco Video Surveillance Transcoding and Encoding Server
- E. Cisco Video Surveillance Virtual Matrix

Answer: B

NEW QUESTION 409

Refer to the exhibit.

Troubleshooting [Deactivate standby] [Re-run diagnostics]

Diagnostics that helps to identify issues that may cause the TelePresence system to underperform or fail to work as expected.

WARNING: Network Speed Auto Negotiation
Cisco recommends enabling Ethernet autonegotiation on both ends of an Ethernet link. Ensure that both the device and the switch have network speed autonegotiation enabled.

WARNING: Echo Cancellation Delay
High delay in audio loop detected. Highest delay: 170ms

This TelePresence system has been setup in a non-optimal manner and is not providing an optimal TelePresence experience. The delay in the output path is currently so high that the HDMI audio output arrives outside the time envelope where the acoustic echo canceller is operating. The system has automatically corrected this, at the cost of added delay on the output. If the output TV/monitor has a gaming mode or low latency mode it should be activated.

OK: System Name
The device has a system name set.

The customer recently connected a new TV monitor to the Cisco TelePresence endpoint. This device is now showing a warning concerning the echo cancellation delay. Which action could help mitigate this issue?

- A. Turn off any postprocessing settings.
- B. Turn off 3D mode on the new TV.
- C. Turn on Frequency Scan Acceleration for the new TV.
- D. Turn off surround sound on the new TV.

Answer: A

NEW QUESTION 412

An engineer wants to manually assign the IP address on an Cisco TelePresence System EX Series endpoint by using the CLI. Which command should the engineer use?

- A. xCommand Set Network IPV4 Address
- B. xConfiguration Network IPV4 Address Ethernet0:
- C. xConfiguration Network IPV4 Address NIC0:
- D. xConfiguration Network IPV4 Address:

Answer: D

NEW QUESTION 415

A conference has been scheduled two hours in advance. When does Cisco TelePresence Management Suite run diagnostics for system tickets that can affect the conference setup?

- A. 15 minutes prior to the scheduled start time
- B. 1 minute prior to the scheduled start time
- C. 10 minutes prior to the scheduled start time
- D. 5 minutes prior to the scheduled start time

Answer: A

NEW QUESTION 418

Which option is the Cisco recommended layout if cascading is being used?

- A. Enhanced Continuous Presence
- B. Full Participant
- C. Continuous Presence
- D. Active Speaker

Answer: C

NEW QUESTION 421

Refer to the exhibit.

Priority	State	Description	Pattern	Type
5	Enabled	Transform 1	155100[1234]	Regex
10	Enabled	Transform 2	([!@])	Regex
15	Enabled	Transform 3	155100	Prefix
20	Enabled	Transform 4	15551001234	Exact

A call with a destination alias of 15551001234 reaches a Cisco TelePresence VCS. Which transform will the destination alias match?

- A. Transform 1
- B. Transform 2
- C. Transform 3
- D. Transform 4

Answer: B

NEW QUESTION 425

An engineer is using a cascading feature with Cisco TelePresence Conductor and Cisco TelePresence Servers. Which two limitations will the engineer likely encounter? (Choose two.)

- A. Ad-hoc conferencing cascading is not supported.
- B. Only single-screen endpoints are supported through cascading links.
- C. Multiple-screen endpoints are supported only with three or more Cisco TelePresence Servers.
- D. Scheduled conferencing is not supported.
- E. Ad-hoc conferencing cascading is supported only with three or more Cisco TelePresence Servers.

Answer: AD

NEW QUESTION 429

A network engineer is setting up a Cisco TelePresence Content Server. The customer requires live streaming, but does not have a streaming server. Which media should be configured to stream locally from the TelePresence Content Server?

- A. QuickTime
- B. MPEG-4
- C. Flash
- D. Windows Media
- E. Darwin

Answer: D

NEW QUESTION 432

Which codec represents video that is supported by Cisco TelePresence endpoints?

- A. H.263
- B. H.323
- C. H.264
- D. H.262

Answer: C

NEW QUESTION 437

Which statement is correct regarding the difference between Multisite and Multiway conferencing?

- A. Multisite requires configuration on the endpoint, whereas Multiway requires the Multiway options key to be installed.
- B. Multisite requires the presence of a multipoint control unit, whereas Multiway relies on the endpoint conferencing capability.
- C. Multisite is used to conference in multiple sites, whereas Multiway is intrasite multipoint conferencing.
- D. Multisite requires the Multisite options key to be installed and configured at the endpoint, whereas Multiway requires a Cisco TelePresence Video Communications Server and a centralized multipoint control unit.

Answer: D

NEW QUESTION 439

The user of a Cisco TelePresence MX300 wants to control the far-end camera of any video conference participant. Which control device and function is used to control the far-end camera?

- A. Navigate using the TRC5 Remote Control arrow key
- B. A company would like to add additional multipoint features to their video infrastrucur
- C. Which feature is the
- D. Tap on the image of one of the participants using touch control.
- E. Use the Touch Control Conference functions.
- F. Use the TRC5 Remote Control home key.

Answer: B

NEW QUESTION 440

Refer to the exhibit.

```
RemoteParticipant::propose60fpsThreshold(p=6, ch=4): Did not find mixer
((nil)) or channel (0x482e29d4)
Aug 7 22:25:49 (none) main: 208.88 MC I:
RemoteParticipant::reevalRefMode(p=6, ch=4) set ref [Data (4): H.224-
HDLc 64k ] q= auto, t60=6000
Aug 7 22:25:49 (none) main: 208.88 MC I: MediaServerAction():
InputGate(ig=66) creation took 714 milliseconds
Aug 7 22:25:49 (none) main: 208.88 MC I: Mc::CallRequest(p=6) from
"60<52902511@dca221.test>" to "sip:multiway221@osl147.local"
Aug 7 22:25:49 (none) main: 208.88 SipCall I: ==== makeOutgoingCall
appId=6, stackId=na
Aug 8 02:25:49 arm4 video4: 208.55 DEC_FSM-4 I:
DEC_Decoding_doVIDDECStopReq
Aug 7 22:25:49 (none) main: 208.88 Bfcp I: BFCP context using IPv4,
172.29.25.211:5070, UDP
Aug 7 22:25:49 (none) main: 208.89 SipCall I:
sip_call_handler::handleSIPMRtpLocalCapsetInd(6/-1/-1, capsetentries:
25): Received local capset with payload types set
Aug 7 22:25:49 (none) main: 208.89 MC I:
RemoteParticipant::configureIncomingChannel: Capability table:
Aug 7 22:25:49 (none) main: 208.89 DATACTRL I: DataGateCfgReq(ig=5)
hdlc=yes
Aug 8 02:25:49 arm0 video0: 208.40 ENC_FSM-0 I: configure framerate
3000, bitrate 448000, packetize 0, fragmentize 1360, dynamicmbps
108000, staticmbps 323500, fluxpacketlength 0
Aug 8 02:25:49 arm0 video0: 208.42 ENC_FSM-0 I: stop
Aug 8 02:25:49 arm4 vpe2: Note: window 5 not yet supported by the fpga
Aug 7 22:25:50 (none) main: 209.10 VIDEOCTRL-0 I: (proxy,161) maximum
number of framestorage slices 2
Aug 8 02:25:50 arm4 videogw: VPOutput_Start: vpDispStart
Aug 8 02:25:50 arm4 videogw: startVideoPort: Setting max size to
1920x1200
Aug 8 02:25:50 arm4 videogw: Thread FS_VP_OUTPUT has TID 1058
Aug 7 22:25:50 (none) main: 209.13 MC W: Mcfsm::handleOtherMessages()
unknown msg SIPM Redirected from EPApp1
```

What can be deduced from the log shown in the exhibit, which was taken from a Cisco TelePresence Codec C60?

- A. A direct call to 52902511 is being made.
- B. A Multiway call to multiway221@osl147.local is being made.
- C. No calls are being attempted by the endpoint.
- D. ABFCP call is being initiated.
- E. The endpoint is receiving a call from the VCS.

Answer: B

NEW QUESTION 442

How does a Cisco TCS process incoming video calls?

- A. Recording Alias > Template > Media Server Configuration
- B. Recording Alias > Media Server Configuration > Template
- C. Recording Alias > Media Server Configuration > H.323 > Template
- D. Recording Alias > Workflow > Template > Media Server Configuration

Answer: A

NEW QUESTION 444

Jabber fail login with logs. What DNS SRV record need to resolve this issue?

- A. _SIP
- B. _SIPS
- C. _EDGE
- D. _cisco-uds

Answer: D

NEW QUESTION 446

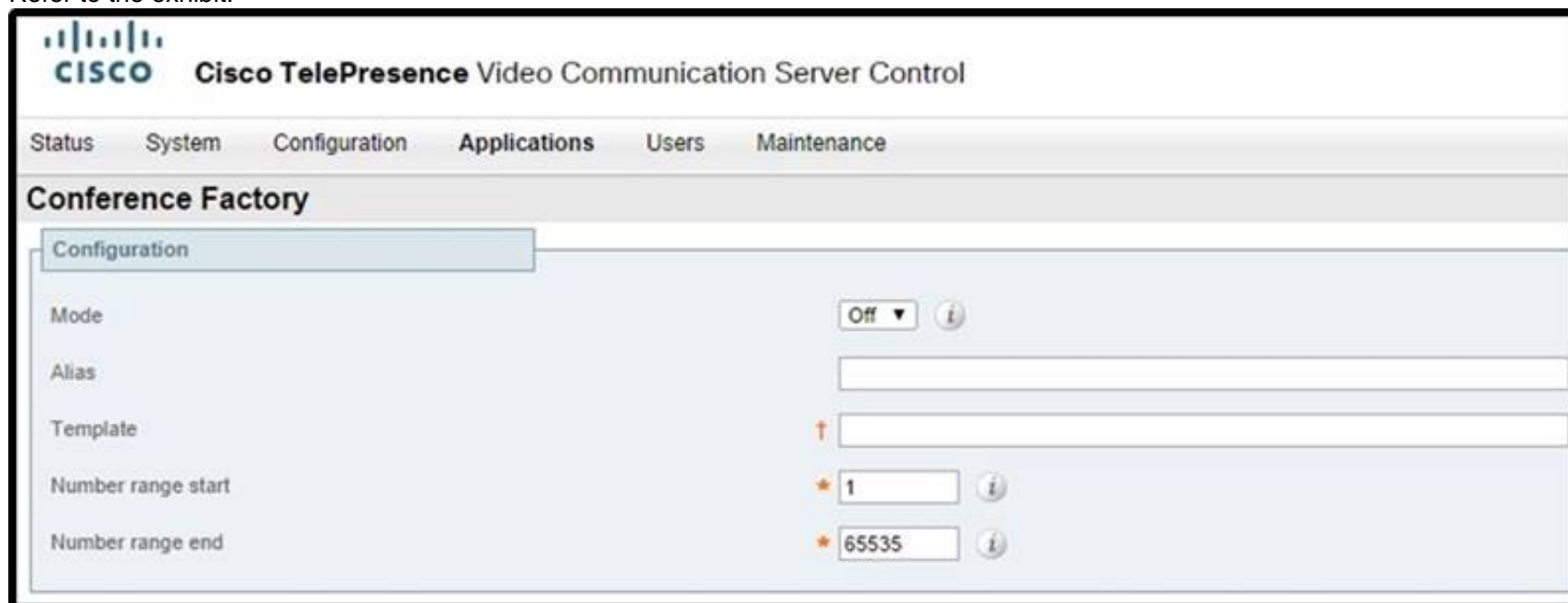
When you are on a call that is hosted on a Cisco TelePresence MCU, which function is enabled when you enter the numeric sequence *6?

- A. request the floor
- B. mute/unmute audio
- C. merge another call
- D. cycle layout options

Answer: B

NEW QUESTION 449

Refer to the exhibit.



A company would like to add additional multipoint features to their video infrastructure. Which feature is the video administrator attempting to configure in this exhibit?

- A. multisite feature to allow third-party multipoint conferences
- B. multipoint scheduled conferences using conference factory
- C. multiway feature to allow on-demand conferences
- D. multisite feature to allow scheduled conferences

Answer: C

NEW QUESTION 450

A technician enters the diag system normal command for a Cisco TelePresence System endpoint. Which action must be done in the CLI before entering this command?

- A. Logging must be enabled.
- B. Calling services must be stopped.
- C. All forced upgrades must be cleared.
- D. The Telephone_Srvr service must be restarted.

Answer: B

NEW QUESTION 454

Which two additional items can be configured for an endpoint to register with the Cisco TelePresence Video Communication Server for H.323 to function correctly? (Choose two.)

- A. unique system ID
- B. unique H.323 ID
- C. unique DNS entry ID
- D. unique E.164 alias
- E. unique real-time transport protocol port numbers
- F. unique NTP server IPv4 address

Answer: BD

NEW QUESTION 458

Which two additional items must be configured for an endpoint to register manually with the Cisco TelePresence Video Communication Server for the SIP to function correctly? (Choose two.)

- A. E.164 alias
- B. H.323 ID
- C. SIP uniform resource indicator
- D. configured SIP registrar and proxy server
- E. NTP server IPv4 address
- F. unique system ID

Answer: CD

NEW QUESTION 460

A new Cisco TelePresence MCU 5300 is being installed. The customer requested a static IP address to be configured on this device. Which two methods address this request? (Choose two.)

- A. From the MCU console, issue the command set static ip-address netmask default-gateway.
- B. From the MCU console, issue the command xconfigure interface:1 static ip-address netmask.
- C. From the MCU console, issue the command static A ip-address netmask default-gateway.
- D. From the web interface, use the Network > Port A menu options.
- E. From the web interface, use the Settings > Interface menu options.

Answer: CD

NEW QUESTION 463

When scheduling a multipoint conference, which three devices are required for the conference to be scheduled and completed successfully? (Choose three.)

- A. Cisco Unified Communications Manager
- B. multipoint control unit
- C. video conferencing endpoints
- D. Cisco Unity Connection
- E. Cisco Unified IM and Presence

Answer: ABC

NEW QUESTION 464

What CLI command will enable access to the presentation device in the system?

- A. utils system presentation
- B. set system presentation
- C. set presentation system
- D. utils present enable

Answer: A

NEW QUESTION 465

Which three items should be considered when restoring a backup to a Cisco VCS Expressway? (Choose three.)

- A. A restart is required to complete the system restore process.
- B. If the backup file is encrypted, an encryption password will be needed.
- C. A valid backup configuration file must be accessible.
- D. A function SFTP server is needed for remote restore.
- E. The VCS expressway must be put into maintenance mode during the upgrade.
- F. A flash drive that is connected to the appliance can be used to restore the configuration.
- G. Cisco TMSXE can be used to process and restore backups.

Answer: ABC

NEW QUESTION 466

An engineer is deploying Cisco Digital Media Players throughout the enterprise to provide digital signs. Which three Cisco Digital Media Players can the engineer use? (Choose three.)

- A. Cisco Edge 340 Digital Media Player
- B. Cisco Edge 350 Digital Media Player
- C. Cisco Digital Media Player 4305
- D. Cisco Digital Media Player 4310G
- E. Cisco Digital Media Player 4400G
- F. Cisco Digital Media Player 4500

Answer: ADE

NEW QUESTION 471

An engineer is consistently seeing tickets in the Cisco TMS that are generated when a video endpoint is powered off each day. Which menu path allows the engineer to prevent this type of ticket from being created?

- A. TMS > Clear this ticket
- B. TMS > Acknowledge ticket
- C. TMS > Ignore ticket type for this system
- D. TMS > Ticket management
- E. TMS > Manage ticket error levels

Answer: C

NEW QUESTION 473

Which option describes how to configure SNMP settings on a CTS/TX endpoint?

- A. can be configured only via codec CLI
- B. can be configured only via codec GUI
- C. can be configured only in a device profile in Cisco Unified Communications Manager
- D. can be configured either via codec GUI or codec CLI
- E. can be configured in codec GUI, codec CLI, or device profile in Cisco Unified Communications Manager

Answer: C

NEW QUESTION 474

Refer to the exhibit.

```
2014-10-30 15:15:15: INFO Jitter buffers increased
2014-10-30 15:15:15: INFO admin CLI login from 10.160.134.15:51118
2014-10-30 15:15:23: INFO Main display: Displayed mute icon
2014-10-30 15:15:33: INFO Main Video stream packet loss detected on the center codec
2014-10-30 15:15:48: INFO Main Video stream packet loss detected on the center codec
2014-10-30 15:15:48: INFO Packet loss detected: 100.00% loss - exceeded 10% threshold
2014-10-30 15:15:48: INFO Packet loss detected: 100% loss - no media stream received in the last 10 seconds
2014-10-30 15:15:52: INFO admin CLI login from 10.160.134.15:51151
2014-10-30 15:16:03: INFO Main Video stream packet loss detected on the center codec
```

An employee is reviewing the logs from a Cisco TelePresence System unit due to reports of calls being dropped. Which log entry explains the reason for the call failure?

- A. INFO Packet loss detected: 100% loss - no media stream received in the last 10 seconds
- B. INFO Jitter buffers increased
- C. INFO admin CLI login from 10.160.134.15:51151
- D. INFO Main Video stream packet loss detected on the center codec

Answer: A

NEW QUESTION 477

Which video input port is available on a Cisco DX80?

- A. DVI-D
- B. DVI-A
- C. VGA
- D. HDMI

Answer: D

NEW QUESTION 482

An engineer is configuring VIP mode for a Cisco TelePresence Multipoint Switch. What are three characteristics the engineer must keep in mind? (Choose three.)

- A. VIP mode can be configured only when the meeting is not active.
- B. The VIP is displayed on the center screen for three screen systems.
- C. Network multipoint meetings are supported.
- D. VIP mode timers must be configured from the CLI.
- E. Locking is not supported.
- F. Only one VIP can be configured for each meeting.

Answer: BDF

NEW QUESTION 484

An engineer needs to connect an external display to a Cisco TelePresence MX700 endpoint. What must the engineer do to access the external monitor output connector?

- A. Remove the cover under the main monito
- B. The cover is fastened with two screws.
- C. Remove the cover on the back of the syste
- D. The cover is fastened with magnets.
- E. Remove the cover on the right side of the syste
- F. The cover is fastened with four screws.
- G. Remove the cover on the left side of the syste
- H. The cover is fastened with magnets.

Answer: D

NEW QUESTION 488

An engineer is troubleshooting call quality issues between two sites. On an active voice call, the call statistics on the IP phone show that the max jitter is 100 ms. Which option is the maximum amount of jitter that the engineer can allow and still expect to maintain a high-quality audio call?

- A. 5 ms
- B. 10 ms
- C. 30 ms
- D. 50 ms

Answer: D

NEW QUESTION 490

Which two Cisco TelePresence protocols are supported for content sharing in point-to-point and multipoint meetings? (Choose two.)

- A. BFCP
- B. ICE
- C. Switched Presentation
- D. Auto Collaboration

E. H.323

Answer: AD

Explanation: https://www.cisco.com/c/en/us/td/docs/telepresence/interop/1_8/deployment/guide/Interop_Release1_8/present.

NEW QUESTION 493

A customer has a data and VoIP converged network and would like to add video to this network. Which two key QoS elements should be included in the new network design? (Choose two.)

- A. Configure bandwidth management features to smooth bursty traffic and mitigate end-to-end congestion.
- B. Assign a high priority to transactional traffic to maintain quality of business traffic.
- C. Keep video traffic on the low latency queue and move voice traffic to a lower-priority queue.
- D. Apply bandwidth control features that will guarantee bandwidth for the maximum possible amount of video traffic.
- E. Assign both video and voice traffic to use the highest-priority queue.

Answer: AD

NEW QUESTION 497

An engineer must create a solution for 15 analog cameras. Which module supports this requirement?

- A. Cisco Analog Video Gateway Module
- B. Cisco ISR Module
- C. Cisco Video Management Module
- D. Cisco Storage System Module

Answer: A

NEW QUESTION 500

When you add third party call what button you should press?

- A. Transfer
- B. Merge
- C. Conference
- D. Sawp

Answer: C

NEW QUESTION 502

What is the maximum number of servers that a Cisco TelePresence Content Server cluster can have?

- A. 6
- B. 7
- C. 8
- D. 10
- E. 12

Answer: D

NEW QUESTION 506

The microphone on a Cisco TelePresence System 3000 is switching incorrectly to a camera that does not have an active speaker. What is the first step that an engineer should take to troubleshoot this issue?

- A. Check whether the microphone is properly plugged in.
- B. Run the microphone calibration procedure.
- C. Plug all microphones into the primary codec.
- D. Check whether the cable from the microphone is plugged into the correct receptor on the codec.

Answer: B

NEW QUESTION 511

How many passwords are utilized for each user in Cisco Unity Connection?

- A. 1
- B. 2
- C. 3

Answer: C

NEW QUESTION 513

Which technology can be used to pair an iPad with a Cisco room-based video collaboration endpoint?

- A. Bluetooth
- B. Wi-Fi

- C. Cisco Intelligent Proximity
- D. Zigbee

Answer: C

Explanation: <https://www.cisco.com/c/en/us/products/collaboration-endpoints/intelligent-proximity.html>

NEW QUESTION 516

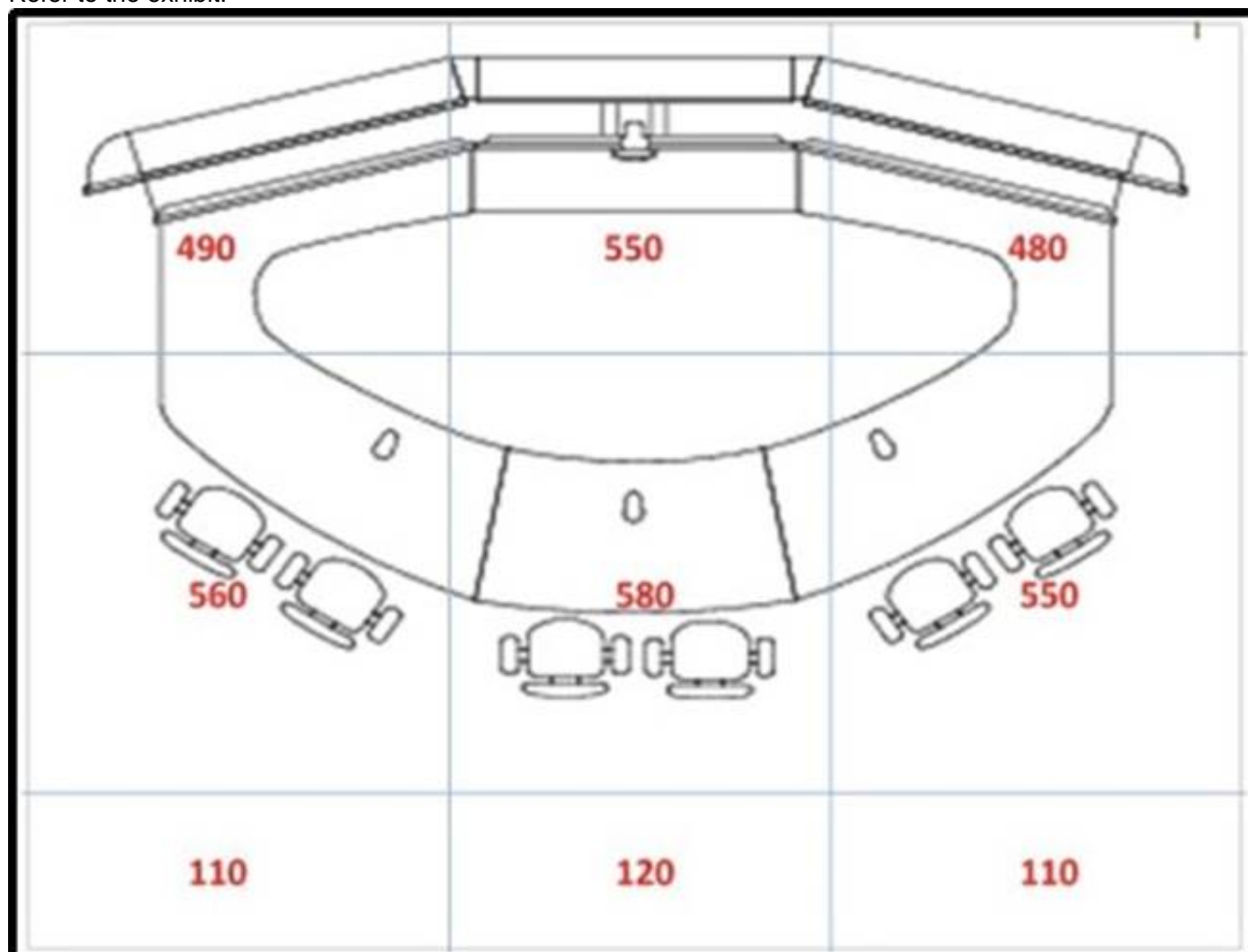
An engineer wants to convert analog live video, streaming it across an IP network and displaying it in another location. Which two components are required, at minimum, to provide this functionality? (Choose two.)

- A. Cisco Media Experience Engine 3500
- B. Cisco TelePresence Content Server
- C. Cisco Digital Media Player
- D. Cisco Digital Media Manager
- E. Cisco Digital Media Encoder

Answer: CE

NEW QUESTION 521

Refer to the exhibit.



The numbers on the floor plan represent the horizontal average lux readings for nine different room areas. Considering Cisco best practices, what can you conclude about the lighting conditions?

- A. Only three areas meet the room lighting levels that are recommended by Cisco.
- B. Only three areas do not meet the room lighting levels that are recommended by Cisco.
- C. All areas meet the room lighting levels that are recommended by Cisco.
- D. The areas do not meet the room lighting levels that are recommended by Cisco.

Answer: B

NEW QUESTION 524

Which two devices are Cisco Digital Media Player Models? (Choose two.)

- A. Cisco MXE
- B. Edge 300
- C. Edge 340
- D. Cisco Cast

Answer: BC

NEW QUESTION 529

Refer to the exhibit.

pod1-C60

TANDBERG Codec C60

Diagnostics

Configuration

Call Control

Maintenance

User: admin

Advanced Configuration

Search ...

Audio

Cameras

Conference 1

Experimental

FacilityService

GPIO

H323

Network 1

NetworkPort 2

NetworkServices

Phonebook Server 1

Provisioning

RTP Ports Range

SIP Profile 1

Security

SerialPort

Standby

SystemUnit

Time

UserInterface

Video

SystemUnit

CallLogging Mode

On

ContactInfo Type

Auto

IrSensor

Auto

MenuLanguage

English

Name

pod1-C60

ok

(Length must be from 0 to 50)

Type

Shared

Which configuration element can be used to specify the Multiway address that can be used by the endpoint to initiate Multiway calls?

- A. Conference 1
- B. NetworkServices
- C. Provisioning
- D. SIP Profile 1
- E. Video

Answer: B

NEW QUESTION 534

Which Cisco DX series endpoint supports PoE?

- A. DX650.
- B. DX70.
- C. DX80.
- D. All DX endpoints support PoE.

Answer: A

NEW QUESTION 536

How would an administrator reset a Cisco VCS Control appliance to the default configuration?

- A. Via the CLI, log in as root and issue the factory-reset command.
- B. Via the CLI, log in as root and issue the reset-defaults command.
- C. Via the web GUI, log in as the administrator, choose Backup and Restore, and click the Factory Reset button.
- D. Hold down the power button for 10 seconds until the light flashes.
- E. Hold down the reset button on the back of the appliance for 10 seconds.

Answer: A

NEW QUESTION 538

Which two Cisco TelePresence endpoints are considered immersive endpoints? (Choose two.)

- A. C20
- B. EX90
- C. SX10
- D. TX9000

E. IX5000

Answer: DE

NEW QUESTION 543

What is the main difference between a Cisco TelePresence Multipoint Control Unit and a Cisco TelePresence Multipoint Switch?

- A. The Cisco TelePresence Multipoint Control Unit is a hardware bridge.
- B. The Cisco TelePresence Multipoint Switch is a software bridge.
- C. The Cisco TelePresence Multipoint Control Unit is a software bridge for immersive and non-immersive endpoint
- D. The Cisco TelePresence Multipoint Switch is a hardware bridge for non-immersive endpoints.
- E. The Cisco TelePresence Multipoint Control Unit delivers automatic voice-activated switching.
- F. The Cisco TelePresence Multipoint Switch provides active presence.
- G. The Cisco TelePresence Multipoint Control Unit has a latency of less than 10 ms, whereas the Cisco TelePresence Multipoint Switch has a latency of 100 ms.

Answer: A

NEW QUESTION 548

What is the process for resetting a Cisco VCS control appliance back to initial default configuration?

- A. Push down and hold the reset button on the back of the VCS appliance for 10 seconds and power cycle the device.
- B. Log onto the CLI console as root and initiate the defaults-reset command.
- C. Log into the GUI interface as administrator, choose System Settings, select Restore, select Factory Reset.
- D. Log onto the CLI console as root and initiate the factory-reset command.

Answer: D

Explanation: <https://www.cisco.com/c/dam/en/us/td/docs/telepresence/infrastructure/vcs/troubleshooting/RMA-Procedures-fo>

NEW QUESTION 552

A user is unable to make a video call from an endpoint that is registered to the Cisco VCS. To isolate the cause, which two menu choices should the user check first? (Choose two.)

- A. Configuration > Call Policy
- B. Status > Registrations
- C. Status > Search History
- D. Status > System Information
- E. Configuration > Dial Plan > Search Rules
- F. Status > Event Log

Answer: CF

NEW QUESTION 553

A Cisco TelePresence EX Series desktop endpoint failed to register to a Cisco VCS. The SIP status shows "Failed: 403 Forbidden" in the endpoint's web interface. What is the first thing that should be checked in the endpoint configuration settings?

- A. Verify that the correct SIP authentication credentials have been configured.
- B. Ensure that CallSetup Mode is set to Gatekeeper.
- C. Verify that Outbound Connection Credentials are properly configured.
- D. Check to see that SIP Mode is set to On.

Answer: A

NEW QUESTION 557

An engineer wants to stream Cisco TelePresence high-definition video to another location. The stream must be connected to an HDMI input on a display. Which two components, at minimum, are required to provide this functionality? (Choose two.)

- A. Cisco Media Experience Engine 3500
- B. Cisco TelePresence Content Server
- C. Cisco Digital Media Player
- D. Cisco Digital Media Manager
- E. Cisco TelePresence Server

Answer: BC

NEW QUESTION 560

While performing a password recovery on a Cisco TelePresence endpoint, what is the maximum amount of time for input to be received by the device before the system exits the password recovery mode?

- A. 15 seconds
- B. 20 seconds
- C. 30 seconds
- D. 40 seconds
- E. 60 seconds

Answer:

E

NEW QUESTION 562

Which codec is most suitable for a video streaming solution?

- A. AAC-LD
- B. G.729
- C. H.264
- D. G.711

Answer: C

NEW QUESTION 564

An administrator is troubleshooting an endpoint whose SIP Registration Status shows "Failed: 403 Forbidden" and must obtain information about the cause of the failure. To which two menu locations must an engineer navigate? (Choose two.)

- A. Endpoint > Log Files > messages.log
- B. Endpoint > Diagnostics > Log Files > all.log
- C. VCS > Maintenance > Diagnostics > Incident Reporting > View
- D. VCS > Status > logs > Configuration Log
- E. VCS > Status > logs > Event Log

Answer: DE

NEW QUESTION 566

In a Cisco TelePresence MX300 G2, what is the minimum bandwidth for 1080p30?

- A. 768 kbps
- B. 1152 kbps
- C. 1472 kbps
- D. 1873 kbps
- E. 2560 kbps

Answer: C

NEW QUESTION 570

Which two of these can cause registration problems for a Cisco TelePresence Codec C40 endpoint running in H.323 mode? (Choose two.)

- A. The IP default gateway address is incorrect for the endpoint.
- B. The H.323 license stack is not added to the endpoint.
- C. The MAC address for the endpoint has not been added to the Cisco TelePresence VCS.
- D. The E.164 H323Alias has not been configured on the endpoint.
- E. The URI address has not been configured on the endpoint.

Answer: AD

NEW QUESTION 572

Refer to the exhibit.

<input type="checkbox"/>	Conductor	Neighbor	0	0 kbps	Off	Active
<input type="checkbox"/>	MCU_5310a	Neighbor	0	0 kbps	Off	Active
<input type="checkbox"/>	Production CUCM	Neighbor	0	0 kbps	Off	Active
<input type="checkbox"/>	TraversalZone	Traversal client	0	0 kbps	Off	Failed
<input type="checkbox"/>	VMablis	Neighbor	0	0 kbps	Checking	Checking

An H.323 endpoint that is registered to Cisco VCS Control is not able to make B2B calls. Calls to other internal endpoints are working fine. What is the likely cause of the issue?

- A. The Conductor H.323 zone is set to "Off."
- B. The Traversal Zone H.323 zone is set to "Off."
- C. The Production CUCM H.323 zone is set to "Off."
- D. The Traversal Zone H.323 zone is in a "Failed" state.

Answer: B

NEW QUESTION 575

Which standard will support call forwarding?

- A. H.450.3
- B. H.323
- C. RFC 2833
- D. H.450.2

Answer: A

NEW QUESTION 579

A company wants to set up a video conference meeting where all users can dial into via a predetermined number. Which type of meeting must the administrator set up to accomplish this configuration?

- A. rendezvous conference
- B. ad-hoc conference
- C. multiway conference
- D. multiparty conference

Answer: A

NEW QUESTION 584

Which function does BFCP provide?

- A. BFCP is a secondary video channel that is used for content such as slide presentations and desktop sharing.
- B. BFCP is used to determine who is allowed to send media to the content channel.
- C. BFCP provides the ability to pan, tilt, and zoom the far end's camera.
- D. BFCP negotiates who can send DTMF tones and when the tones are sent.

Answer: B

NEW QUESTION 585

Which two actions must take place for proper operation when using Advanced Networking on Cisco VCS? (Choose two)

- A. Automatic routing must be enabled
- B. NAT reflection must be enabled on the firewall
- C. Manual routes must be added using xCommand RouteAdd
- D. Network interfaces must reside in the same subnet
- E. Network interfaces must reside in separate subnets

Answer: CE

NEW QUESTION 590

A technician is trying to troubleshoot real-time call information from the CLI of a VCS. Which command should the technician enter?

- A. xstatus
- B. xconfiguration
- C. xfeedback
- D. xhistory
- E. xcommand

Answer: C

NEW QUESTION 593

An engineer is deploying a Cisco Media Experience Engine 3500 to provide various capabilities for ingesting and processing video media and production capabilities. Which two advances does the Cisco MXE 3500 provide? (Choose two.)

- A. automated graphical integration that can embed metadata overlays on videos during processing
- B. over 2 terabytes of storage for both local and streaming media applications
- C. automated ingesting of video files based on watch folders
- D. clustering capability of up to 20 resource nodes to handle and balance incoming media requests and processing
- E. live output abilities to provide DV, DVC Pro, DVC Pro 50, and DVC Pro HD format streams
- F. ability to create VoD file outputs to WebEx ARF format

Answer: AC

NEW QUESTION 595

An engineer must set the DNS name for a Cisco Unity Connection system. Which CLI command accomplishes this task?

- A. set network domain
- B. set network name-service
- C. set network dns
- D. set network dns options

Answer: D

NEW QUESTION 600

What is the main difference between Cisco Jabber and Cisco Jabber Video for TelePresence?

- A. Cisco Jabber registers to the Cisco Unified Communications Manager, whereas Cisco Jabber Video for TelePresence registers to the VCS.
- B. Cisco Jabber Video for TelePresence registers to Cisco Unified Communications Manager, whereas Cisco Jabber registers to the VCS.
- C. Cisco Jabber has no video calling capabilities, whereas Cisco Jabber Video for TelePresence has video capabilities.
- D. Cisco Jabber has no presence capabilities, whereas Cisco Jabber Video for TelePresence has presence capabilities.
- E. There is no difference between Cisco Jabber and Cisco Jabber Video for TelePresenc
- F. They should not coexist in the same network.

Answer: A

NEW QUESTION 603

On the Cisco VCS-E, what is the default port number for the H.323 connection on the first traversal zone between a Cisco VCS-C and Cisco VCS-E?

- A. 1719
- B. 1720
- C. 5060
- D. 6001
- E. 7001

Answer: D

NEW QUESTION 608

Which MCU supports the use of a lobby screen?

- A. CTMS
- B. TS 8710
- C. MCU 5300
- D. Conductor

Answer: B

NEW QUESTION 613

I release a value of acoustic 25 db at a distance of 1 foot. What am I measuring?

- A. NC
- B. SPL
- C. direct ambient reflection
- D. STC
- E. local resonance

Answer: C

NEW QUESTION 616

An engineer is backing up a VCS configuration. Which two methods can be used? (Choose two.)

- A. FTP
- B. SFTP
- C. SSH
- D. web administration
- E. local

Answer: BC

NEW QUESTION 618

A manager requires multiparty video meetings with presentation capability. Which endpoint meets the requirement assuming there is no centralized bridge?

- A. Cisco SX20
- B. Cisco DX650
- C. Cisco 7800
- D. Cisco Jabber

Answer: D

Explanation: <https://www.bluejeans.com/video-conferencing/cisco-telepresence>

NEW QUESTION 622

An engineer wants to know if there is a way to determine remotely what is the optical zoom of the camera directly connected to a Cisco TelePresence SX20. Which two methods will retrieve this information? (Choose two.)

- A. From the CLI, run xconfig
- B. From the web GUI, choose Configuration > Camera > Status
- C. From the CLI, run xstatus
- D. From the web GUI, choose Configuration > System Status > Camera
- E. From CLI, run xcommand camera

Answer: CD

NEW QUESTION 624

Which type of packet-oriented network has the characteristic of being drop-tolerant and delay insensitive?

- A. data
- B. voice
- C. video
- D. converged
- E. All packet-oriented networks share these characteristics.

Answer: A

NEW QUESTION 625

What is the optimum distance for a person sitting using the Cisco TelePresence System 500?

- A. the camera can adjust automatically
- B. 0.5 meters and 0.75 meters (1.5 and 2.5 feet)
- C. 1.2 meters and 1.8 meters (4 and 6 feet)
- D. 3.0 and 5.0 meters (10 and 15 feet)

Answer: C

NEW QUESTION 630

Cisco DX Series endpoints run on which operating system?

- A. TC
- B. Android
- C. CE
- D. Windows

Answer: B

NEW QUESTION 635

Which function does a Cisco TCS recording alias perform?

- A. It links recorded media to a specified output location.
- B. It provides a dialable alias that will trigger a TCS recording workflow.
- C. It sends media to Cisco Medianet.
- D. It provides an alias for the recorded filename.

Answer: B

NEW QUESTION 639

Which two of these support an ad-hoc conference call? (Choose two.)

- A. Cisco TelePresence Multiway with Cisco TelePresence Multipoint Control Unit and Cisco TelePresenceVideo Communications Server
- B. using the Cisco TelePresence Management Suite Scheduler to schedule a conference call to start in 5 minutes
- C. using the Booking tab in the Cisco TelePresence Management Suite to configure a new conference
- D. using the tab Administrative Tools > Configuration > Conference Settings in the Cisco TelePresence Management Suite
- E. pressing the conference button on a Cisco Unified IP Phone 8941 to conference in a third call

Answer: AE

NEW QUESTION 644

Which application should be selected in the navigation pane to add an endpoint in Cisco Unified Communications Manager?

- A. Cisco Unified Serviceability
- B. Cisco Unified CM Administration
- C. Cisco Unified OS Administration
- D. Cisco Unified Reporting

Answer: B

NEW QUESTION 646

When you sign in at jabber what is the SIP message are used?

- A. REGISTER
- B. NOTIFY
- C. REFER
- D. INFO

Answer: A

NEW QUESTION 649

An engineer is connecting a VISCA cable. What is the purpose of this cable?

- A. to connect camera to codec
- B. to connect camera to monitor
- C. to connect camera to touch panel
- D. to connect camera to network

Answer: A

NEW QUESTION 650

Which of the following first provided centralized call control capabilities for H.323 video endpoints?

- A. Gatekeeper
- B. CUCM
- C. MGCP
- D. MCU

Answer: D

NEW QUESTION 655

Which three video endpoints can you set back to factory reset by using physical button presses? (Choose three.)

- A. Cisco TelePresence C40
- B. Cisco TelePresence EX90
- C. Cisco TelePresence C60
- D. Cisco TelePresence SX20
- E. Cisco TelePresence EX60
- F. Cisco TelePresence C90

Answer: BDE

NEW QUESTION 659

Which two layout or switching modes are supported with the Cisco TelePresence Multipoint Switch? (Choose two.)

- A. enhanced continuous presence
- B. active speaker switching
- C. continuous presence
- D. speaker switching
- E. room switching
- F. active continuous presence

Answer: DE

NEW QUESTION 660

Which light is recommended by cisco?

- A. direct
- B. indirect
- C. point
- D. reflector

Answer: C

NEW QUESTION 661

You are checking a DHCP server configuration for video endpoints. What is the role of option 150 in the configuration?

- A. It is the NTP server IPv4 address.
- B. It is not necessary to specify the role of option 150.
- C. It is the TFTP server IPv4 address.
- D. It is the TFTP server IPv6 address.

Answer: C

NEW QUESTION 666

Which two features are available on a Cisco TelePresence Server that are not available on a Cisco TelePresence MCU? (Choose two.)

- A. auto-attendant conference menu
- B. automatic lecture mode
- C. virtualization
- D. multiscreen endpoint support
- E. multiple layouts

Answer: CE

Explanation: <https://supportforums.cisco.com/t5/telepresence/what-is-the-difference-between-mcu-cisco-telepresence-server/t>

NEW QUESTION 671

When an administrator schedules a conference, which three devices are part of the process? (Choose three.)

- A. endpoint
- B. Cisco Prime Collaboration Manager
- C. Cisco TelePresence Management Suite
- D. Cisco Communications Manager
- E. MCU appliance
- F. Cisco TelePresence Content Server

Answer: BDF

NEW QUESTION 675

What is the importance of defining option 150 in the DHCP server for Cisco TelePresence endpoints?

- A. Option 150 is not important.
- B. It is the TFTP server IPv4 address where the video endpoint retrieves its configuration file while booting.
- C. It is the IPv4 address of the default gateway for the subnet that the video endpoint is connected to.
- D. It is the configured SIP registrar and proxy server.
- E. It is the unique NTP server IPv4 address.

Answer: B

NEW QUESTION 677

An end user is in Cisco TelePresence session with a remote participant and can control the camera at the remote endpoint. Which feature is underlying in this scenario?

- A. FEC
- B. DTMF
- C. FECC
- D. PIP

Answer: C

NEW QUESTION 680

Which conference types can occur at anytime without the need for the conference to be scheduled, and can be created as permanent conferences?

- A. ad hoc conferences
- B. auto-dialed participants
- C. Multiway conferences
- D. scheduled conferences
- E. rendezvous conferences

Answer: E

NEW QUESTION 682

An engineer is configuring a Cisco TelePresence System endpoint for use with a maximum of six people in the room. Which table type should be configured when setting up cameras where two participants directly face the endpoint display?

- A. short racetrack
- B. long racetrack
- C. short rectangle
- D. long rectangle

Answer: A

NEW QUESTION 687

Users are reporting that when they receive a second video call on a Cisco TelePresence EX60 and press “Accept and Merge”, they can hear the audio but cannot see the video. Which two actions should an engineer take to fix the cause of the problem? (Choose two.)

- A. Set the Cisco VCS Conference Factory mode to “On.”
- B. Set the Endpoint ActiveControl mode to “Auto.”
- C. Set the Cisco VCS Call Policy configuration to “Local CPL.”
- D. Set the Endpoint Multipoint mode to “MultiWay.”
- E. Set the Endpoint DefaultCall protocol to “SIP.”

Answer: AD

NEW QUESTION 690

An engineer is recovering the password for an admin that has been locked out of a CTS 500-32 not registered to the Cisco Unified Communications Manager. Which option must be entered into the username field when prompted?

- A. pwreset
- B. admin
- C. helpdesk
- D. pwrecovery

Answer: D

NEW QUESTION 692

ACisco TelePresence Server is operating in locally managed mode. In which two ways can a Cisco EX60 user who is connected to a conference that is hosted on a Cisco TelePresence Server change the screen layout? (Choose two.)

- A. using the remote control
- B. using DTMF keys 2 and 8

- C. using FECC
- D. via the Cisco TelePresence server GUI

Answer: BC

NEW QUESTION 697

ACisco engineer needs to provide digital media for the lobby of a company. Which Cisco Digital Media component should the engineer use?

- A. Cisco Cast
- B. Cisco Digital Signs
- C. Cisco DMP
- D. Cisco Show and Share
- E. Cisco IP TV

Answer: B

NEW QUESTION 698

Which effect of the CLI set audio aec enable command on the immersive Cisco Telepresence system is true?

- A. Echo cancellation is enabled.
- B. Call economy quality feature is enabled.
- C. Noise cancellation is enabled.
- D. AEC audio codec is enabled.

Answer: A

NEW QUESTION 699

Endpoints for immersive telepresence: (Choose three.)

- A. CTS 3000
- B. TX 9000
- C. EX 90
- D. SX 10
- E. T3
- F. Jabber

Answer: ABE

NEW QUESTION 704

In order to perform a password recovery for the admin user on a Cisco VCS appliance, what must an engineer do?

- A. Connect via Telnet to the Cisco VCS.
- B. Connect to the serial port.
- C. Connect via SSH.
- D. Connect to LAN port 1.

Answer: B

NEW QUESTION 707

Which two actions does the pwrec command accomplish in a Cisco VCS appliance? (Choose two.)

- A. changes SSH password
- B. changes admin password
- C. changes any user account password
- D. changes root password
- E. changes Telnet password

Answer: BD

NEW QUESTION 709

A video engineer configured Cisco TMS to allow conference scheduling. The engineer set the Default Reservation Type for Scheduled Calls to Automatic Connect. Which option describes what this action accomplished?

- A. No conference resources are scheduled until a Cisco TelePresence form is selected.
- B. Calls are set up and launched by the organizer.
- C. WebEx invites for conferencing are sent automatically.
- D. Conferences are automatically started at the scheduled time.

Answer: D

NEW QUESTION 713

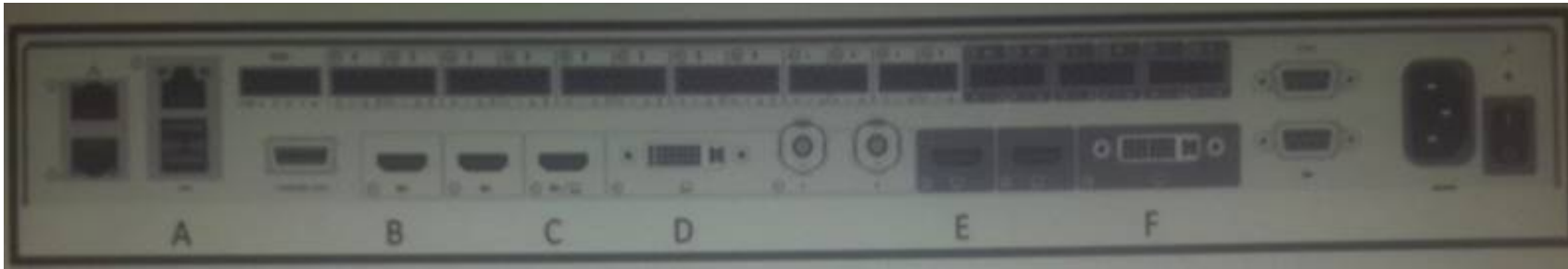
An end user reports that when making B2B calls, the calls are connecting, however, no audio or video is being received by either party. Local calls work fine. Which two areas must be investigated? (Choose two.)

- A. VCS traversal zone

- B. endpoint traversal mode
- C. far end camera control
- D. firewall configurations
- E. DNS configuration

Answer: BD

NEW QUESTION 717



Refer to the exhibit. An SX80 endpoint has been deployed using dual screens and a third display is being added. To which connector must the third display be connected?

- A. A
- B. B
- C. C
- D. D
- E. E
- F. F

Answer: C

NEW QUESTION 721

Which of these is the core component of the Cisco Video Surveillance product suite that handles recording and serving of video feeds?

- A. Video Communications Server
- B. Cisco IP camera
- C. Cisco Video Surveillance Operations Manager
- D. Cisco Video Surveillance Media Server

Answer: D

NEW QUESTION 726

If you use MSE 8710 how many ports by using 720p and software version 4?

- A. 48
- B. 144
- C. 96
- D. 100

Answer: C

NEW QUESTION 729

Customer collaboration refers primarily to which of the following?

- A. Call control solutions
- B. Conferencing solutions
- C. Contact center solutions
- D. Unified communications

Answer: D

NEW QUESTION 731

A customer is looking for a Cisco TelePresence Immersive System that is designed for at least seven participants. Which two products meet this customer's requirements? (Choose two.)

- A. Cisco TelePresence CTS3022
- B. Cisco TelePresence TX9000
- C. Cisco TelePresence TX9200
- D. Cisco TelePresence IX5000
- E. Cisco TelePresence IX5200
- F. Cisco TelePresence TX1310-65

Answer: CE

NEW QUESTION 733

A company is investigating the purchase of desktop video endpoints, but requires them to have DVI-I inputs for sharing content. Which desktop video endpoint model supports DVI-I inputs?

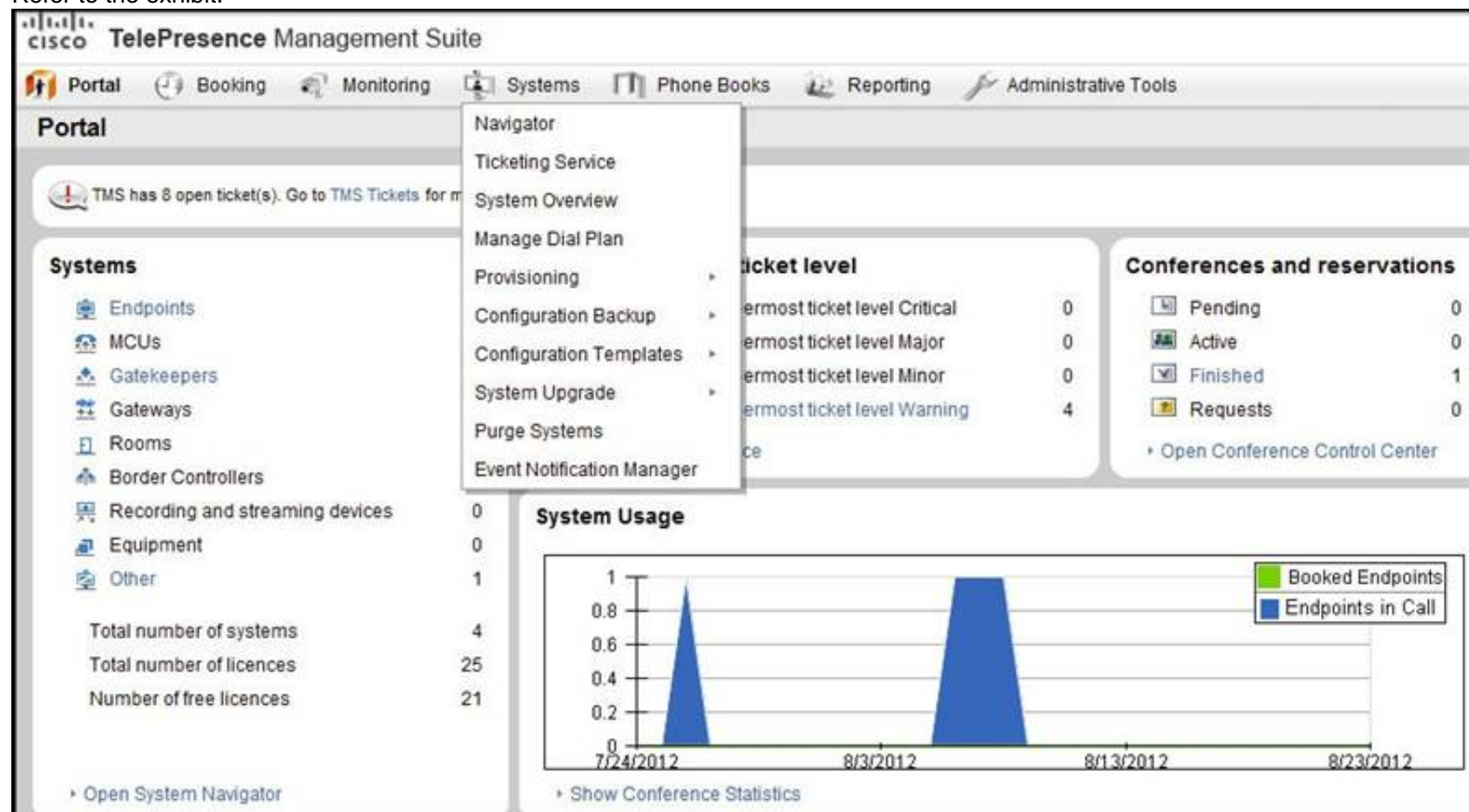
- A. MX700

- B. MX800
- C. EX60
- D. DX650

Answer: C

NEW QUESTION 734

Refer to the exhibit.



Which system tab can be used to add video infrastructure devices and endpoints?

- A. Navigator
- B. System Overview
- C. Configuration Templates
- D. Provisioning
- E. Administrative Tools

Answer: A

NEW QUESTION 736

A video engineer has opened a ticket with Cisco TAC for support and the TAC engineer has requested system information such as software version of Cisco VCS. Where does the video engineer find this information?

- A. System
- B. Maintenance
- C. Configuration
- D. Status

Answer: D

NEW QUESTION 737

Illumination for immersive telepresence:

- A. reflective
- B. point
- C. direct
- D. indirect

Answer: D

NEW QUESTION 740

Which Cisco Unified Communications Manager system report shows high and low call volume patterns?

- A. CAR report
- B. QoS by Gateway
- C. QoS by call types
- D. traffic summary
- E. traffic summary by extension

Answer: D

NEW QUESTION 742

A company just acquired a Cisco MCU 5300 for multi videoconferencing. The networking engineer must create a conference. To which tab does the engineer go to create a conference?

- A. Endpoints
- B. Conferences
- C. Network
- D. Settings

Answer: B

Explanation: In this tutorial the instruction 'Go to Conferences > Move participants' means click the Conferences link on the menu bar and then click the Move participants tab.

https://www.cisco.com/c/dam/en/us/td/docs/telepresence/infrastructure/mcu/user_guide/Cisco_TelePresence_M

Topic 6, Simulation Questions

NEW QUESTION 743

Instructions✕

To access the multiple-choice question, click on the tab titled "Questions" on the bottom of the panel.

Scenario✕

In this item, you will need to use all information presented to you to successfully answer the question.

Exhibit A✕

```

Welcome to c60.dca222.test
TANDBERG Codec Release TC5.1.3.2920C1
SW Release Date: 2012-06-21

OK

Xcommand systemUnit FactoryReset confirm: yes
        
```

Exhibit B

c60.dca222.test

System Type: TANDBERG Codec C60
System status: Idle
Network Address: 172.29.24.120
Connectivity: Reachable on LAN

Summary
Settings
Call Status
Phone Book
Connections
Permissions
Logs

View Settings
Edit Settings
Extended Settings
Compare Settings
Persistent Settings
Ticket Filters

General

Name:

System Type: TANDBERG Codec C60

System Usage Type: Meeting Room

System Connectivity: Reachable on LAN

Network Address:

Manufacturer: TANDBERG

MAC Address:

P Zone: default

Time Zone: (GMT - 05:00) Eastern Time (US & C)

Password:

Status: Idle

Your Access: Read, Set Permissions, Book, Manage Calls, Edit Settings

Provisioned: ☐

System Contact:

Alert System Contact when Booked: No

Description:

Configuration

Software Version: TC5.1.3.2920C1

Hardware Serial No: F1AD46D00C32

Last Settings Backup: Not Registered

Last Settings Restore: Not Registered

Call Settings

Maximum IP Bandwidth:

Max Number of Video Calls:

Max Number of Audio Calls:

Microphone: On

Volume: 100

Autoanswer: On

E 164 Alias 1:

HL323 ID 1:

SIP URI 1:

Exhibit C

```

welcome to c60.dca222.test
TANDBERG Codec release TC5.1.3.292001
SW Release Date: 2012-06-21

OK

xcommand SystemUnit ResetFactoryDefault Confirm: yes
    
```

Exhibit D

The screenshot shows the Cisco C-Series endpoint web interface. The top navigation bar includes tabs for Diagnostics, Configuration, Call Control, and Maintenance. The Maintenance tab is selected, and a dropdown menu is open, showing options: Software Upgrade, Certificate Management, Audit Certificate, User Administration, Restart, and Factory Reset. The Factory Reset option is highlighted with a mouse cursor. The main content area is divided into two sections: System Information and Sign In Information. The System Information section displays general details about the device, including its name, software version, product name, serial number, IP address, MAC address, valid release key, and installed options. The Sign In Information section shows the last successful sign-in time and the number of unsuccessful authorization attempts since the last sign-in.

System Information	
General	
System name:	c60.dca222.test
Software version:	TC5.1.3.292001
Product:	TANDBERG Codec C60
Serial number:	F1AD46D00032
IP address:	172.29.24.120
MAC address:	00:50:60:0D:29:37
Valid release key:	No
Installed options:	NaturalPresenter, MultiSite, PremiumResolution

Sign In Information	
Last successful sign in:	Thu Jul 26 12:29:37 2012
Unsuccessful authorization attempts since last sign in:	0
Password expires in:	Never

Exhibit E

```

Command Line Interface is starting up, please wait ...

welcome to the Platform Command Line Interface

VMware Installation:
  2 vCPU: Intel(R) Xeon(R) CPU           X7550   @ 2.00GHz
  Disk 1: 80GB
  4096 Mbytes RAM

admin:Utils system Reset_Factory_Defaults
    
```

Refer to the exhibits. An administrator needs to perform a factory reset on a C-Series endpoint. What are two valid ways to accomplish this task? (Choose two.)

- A. Exhibit A
- B. Exhibit B
- C. Exhibit C
- D. Exhibit D
- E. Exhibit E

Answer: AD

NEW QUESTION 744

Instructions

To access the multiple-choice question, click on the tab titled "Questions" on the bottom of the panel.

Scenario

In this item, you will need to use all information presented to you to successfully answer the question.

Exhibit A

Cisco Unified CM Administration
For Cisco Unified Communications Solutions

Navigation

admin | Search

System ▾ Call Routing ▾ Media Resources ▾ Advanced Features ▾ Device ▾ Application ▾ User Management ▾ Bulk Administration ▾ Help ▾

Find and List Conference Bridges

+ Add New
Select All
Clear All
Delete Selected
Reset Selected
Apply Config to Selected

Status

1 records found

Conference Bridges (1 - 1 of 1)

Find Conference Bridges where Name ▾ begins with ▾
Find Clear Filter

<input type="checkbox"/>	Conference Bridge Name ^	Description	Device Pool	Status
<input type="checkbox"/>	CFB_2	CFB_cucm90	Default	Registered with cucm90

Add New Select All Clear All Delete Selected Reset Selected Apply Config to Selected

Exhibit B

TelePresence Management Suite

Portal Booking Monitoring Systems Phone Books Reporting Administrative Tools

New Conference

Basic Settings

Title: Start Time:

Type: End Time:

Owner: Duration:

Advanced Settings

Picture Mode: Billing Code:

IP Bandwidth: Password/PIN:


ISDN Bandwidth: ☐ ISDN Restrict

Secure: Extend Mode:

Setup Buffer: Minutes

Tear Down Buffer: Minutes

Exhibit C

 Cisco TelePresence Video Communication Server Control

Status System VCS configuration **Applications** Maintenance

Conference Factory

Configuration

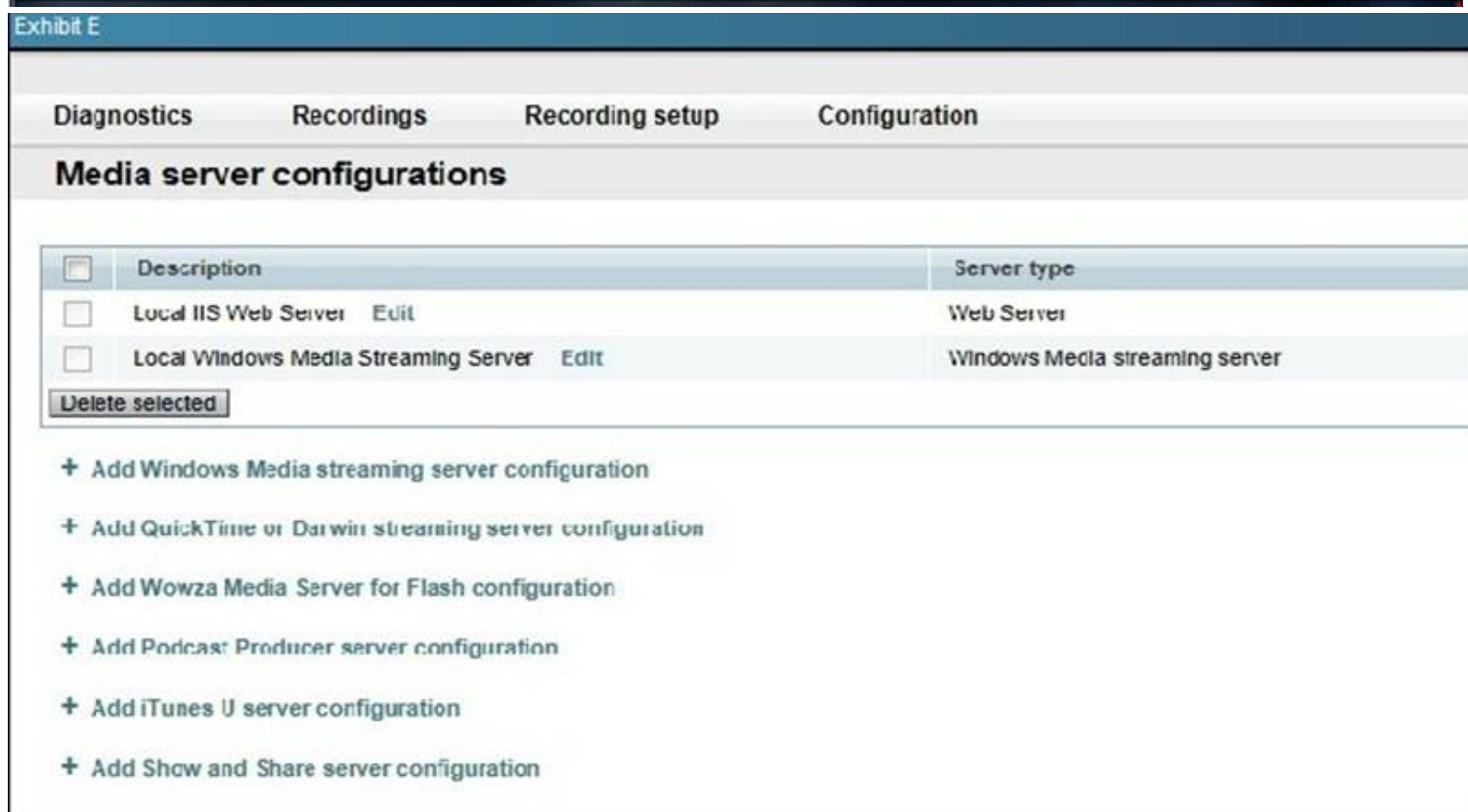
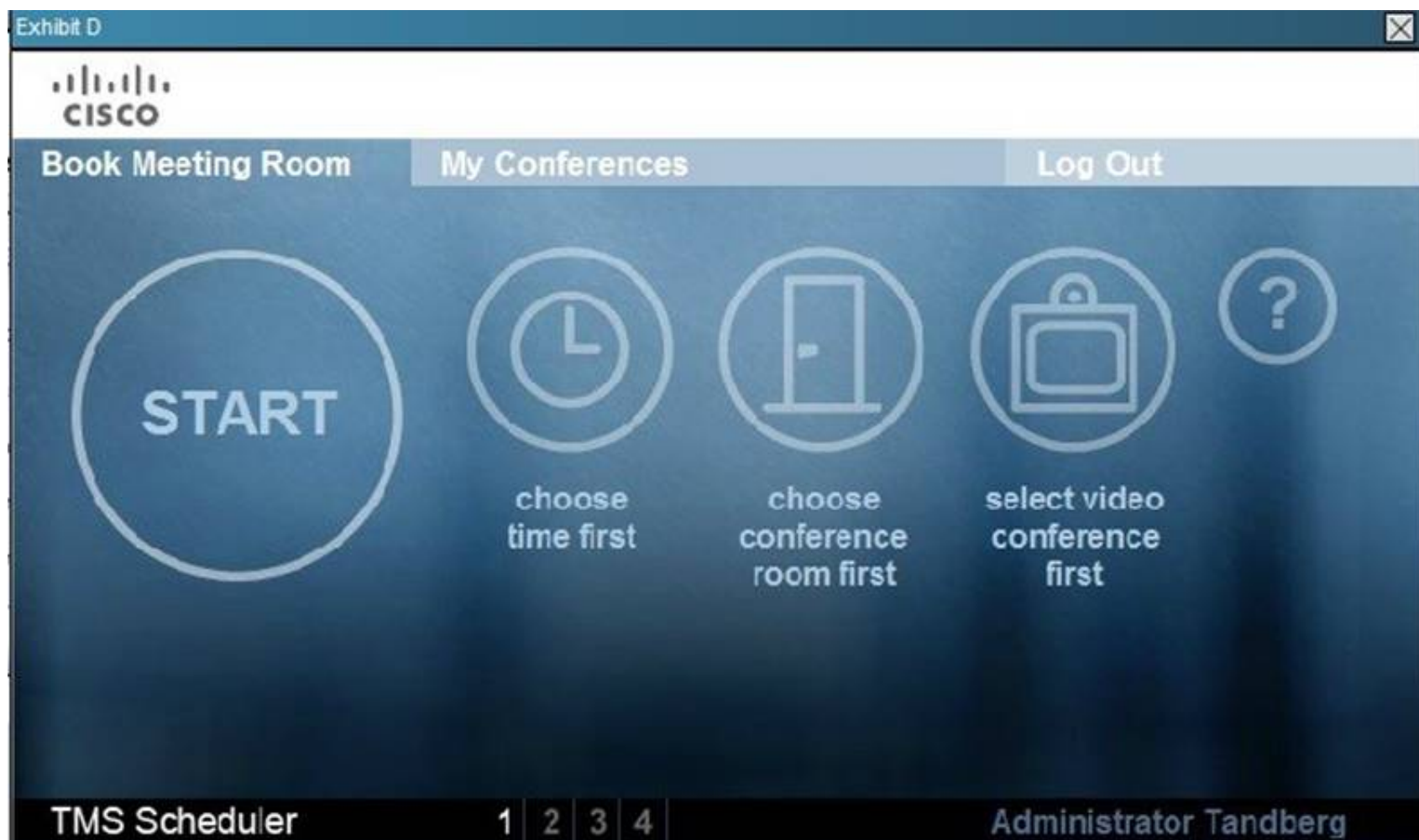
Mode ⓘ

Alias ⓘ

Template ⓘ

Number range start ⓘ

Number range end ⓘ



Refer to the Exhibits, in order to create a scheduled or ad-hoc multipoint conference, which two tolls can be used? (Choose two)

- A. Exhibit A
- B. Exhibit B
- C. Exhibit C
- D. Exhibit D
- E. Exhibit E

Answer: BD

NEW QUESTION 746

Instructions

This item contains one question that you must answer.

You can view this question by clicking on the corresponding button to the left.

In order to complete the question, you need to refer to the scenario, the topology, and the exhibits at the bottom of the screen.

Scenario

In this item, you will need to use all information presented to you to successfully answer the question.

Topology

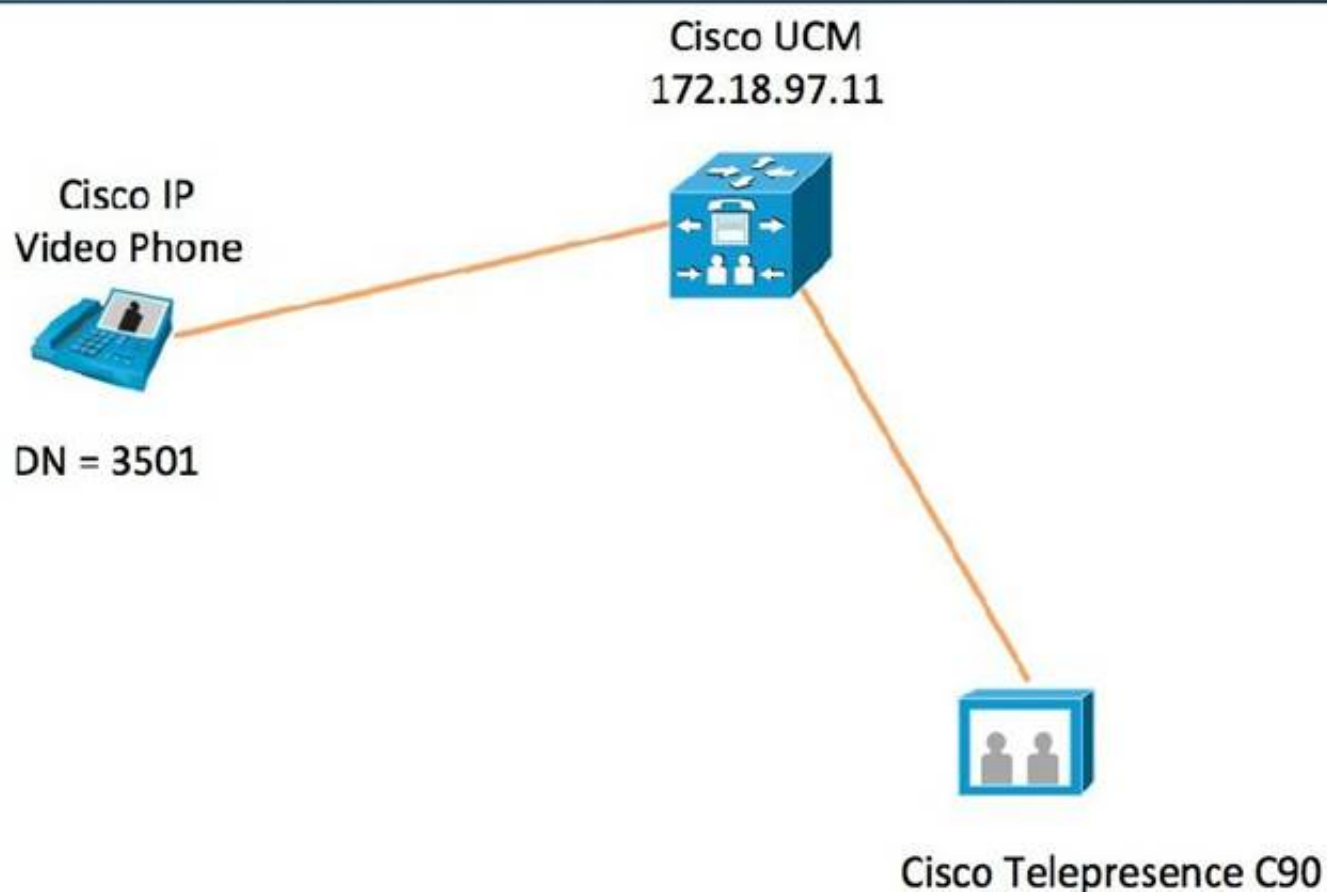


Exhibit1
Phone Configuration
Related Links:

Save
Delete
Copy
Reset
Apply Config
Add New

Status: Ready

Modify Button Items

1
Line [1] - 3506 in Devices

Unassigned Associated Items

2
Line [2] - Add a new DN

Phone Type

Product Type: Cisco TelePresence Codec C90
Device Protocol: SIP

Device Information

Registration: Unknown
IP Address: Unknown
☒ Device is Active
☒ Device is trusted
MAC Address*: 0050608229A4
Description: Telepresence Codec C90
Device Pool*: Default View Det
Common Device Configuration: < None > View Det
Phone Button Template*: Standard Cisco TelePresence Codec C90
Common Phone Profile*: Standard Common Phone Profile
Calling Search Space: All_Devices
AAR Calling Search Space: < None >
Media Resource Group List: < None >
User Hold MOH Audio Source: < None >
Network Hold MOH Audio Source: < None >
Location*: Hub_None
AAR Group: < None >
Privacy*: Default
Device Mobility Mode*: Default View Cur
Owner User ID: < None >
Phone Load Name:
Use Trusted Relay Point*: Default
Always Use Prime Line*: Default
Always Use Prime Line for Voice Message*: Default
Geolocation: < None >
☒ Retry Video Call as Audio
☐ Ignore Presentation Indicators (internal calls only)
☒ Allow Control of Device from CTI
☒ Logged Into Hunt Group
☐ Remote Device

Call Routing Information

Inbound Calls

Calling Party Transformation CSS: < None >
☒ Use Device Pool Calling Party Transformation CSS

Outbound Calls

Calling Party Transformation CSS: < None >
☒ Use Device Pool Calling Party Transformation CSS

Protocol Specific Information

BLF Presence Group*: Standard Presence group
MTP Preferred Originating Codec*: G711law
Device Security Profile*: Cisco TelePresence Codec C90 - Standard SIP Non-
Rerouting Calling Search Space: < None >
SUBSCRIBE Calling Search Space: < None >
SIP Profile*: Standard SIP Profile
Digest Use*: < None >
☐ Media Termination Point Required
☐ Unattended Port
☐ Require DTMF Reception

MLPP Information

MLPP Domain: < None >

Product Specific Configuration Layout

Room Name (from Exchange(R))

Web Access*: Disabled
SII Access*: Disabled
Default Cal Protocol*: SIP
Quality Improvement Server:

Admin username and password

Admin Username: admin
Admin Password:

Passing Certification Exams Made Easy

visit - <https://www.2PassEasy.com>

- Admin username and password - Admin Username <input type="text" value="admin"/> Admin Password <input type="password"/>	
- Dial Plan - Site Access Code <input type="text"/> Inter Site Access Code <input type="text"/> Off-Net Access Code <input type="text"/> National Dialing Digits <input type="text"/> International Dialing Digits <input type="text"/>	
- Directory Number - Country Code <input type="text"/> Area Code <input type="text"/> Local Number <input type="text"/>	

i *. indicates required item.
i **. Device reset is not required for changes to Packet Capture Mode and Packet Capture Duration.
i ***Note: Security Profile Contains Addition CAPF Settings.
i ****Note: A Protected device means it is capable of playing Secure and Non-Secure Tones. When the checkbox is checked, the user will hear a Secure or Non-Secure tone.
i *****Note: A custom Softkey template without supplementary service Softkeys must be used for a Hot Line Device.

Exhibit2

CISCO

untitled Cisco
TANDBERG Codec

User: admin

Advanced Configuration

Search ...

- Audio
- Cameras
- Conference 1
- Experimental
- FacilityService
- GPIO
- H323**
- Network 1
- NetworkPort 2
- NetworkServices
- Phone3000 Server 1
- Provisioning
- RTMP Ports Range
- SIP Profile 1
- Security
- SerialPort
- Standby
- SystemUnit
- Time
- UserInterface
- Video

H323

NAT

Address (Length must be from 0 to 64)

Mode

Profile 1

CallSetup Mode

PortAllocation

Authentication

LoginName (Length must be from 0 to 50)

Mode

Password (Length must be from 0 to 50)

Gatekeeper

Address (Length must be from 0 to 255)

Discovery

H323Alias

E164 (Length must be from 0 to 30)

URI (Length must be from 0 to 49)

The Cisco Telepresence Codec C90 is unable to call the Cisco IP Video Phone. Assuming that the calling search space has been configured correctly, which of the these can cause this issue?

- A. The Cisco Telepresence Codec C90 can only be registered to a Cisco Telepresence Video Communication Server.
- B. A multipoint control unit is required in order for the call to work.
- C. The Cisco Telepresence Codec C90 can only be registered as a SIP endpoint to Cisco Unified Communications Manager.
- D. H.323 is not supported.
- E. URI dialing has not been configured on Cisco Unified Communications Manager.

- F. The Cisco Telepresence Codec C90 Profile 1 > CallSetupMode must be configured as a gateway since Cisco Unified Communications Manager does not have a gatekeeper functionality.
- G. The Cisco Telepresence Codec C90 is not registered as a SIP endpoint on Cisco Unified Communications Manager.
- H. The Cisco Telepresence Codec C90 needs to be registered as both SIP and H.323.

Answer: C

NEW QUESTION 751

Instructions

To access the multiple-choice question, click on the tab titled "Questions" on the bottom of the panel.

Scenario

In this item, you will need to use all information presented to you to successfully answer the question.

Topology

Topology

The diagram illustrates a network topology for Cisco Telepresence. On the left, 'Local Equipment' includes a Cisco Unified IP Phone 8941, Jabber/Jabber Video and other PC clients, a Cisco C Series Codec, and a Cisco TelePresence System 500-32. These are connected to a 'Local router' (red router icon) which is also connected to a 'Cisco LAN switch with inline power' (blue switch icon). The Local router connects to the 'Internet' (cloud icon), which in turn connects to a 'Remote router' (red router icon). The Remote router connects to the 'Remote Network', which contains: Cisco Unified Communications Manager, Cisco Unified Communications Manager Instant Messaging and Cisco Unified Presence Service, Cisco TelePresence Video Communications Server -172.31.223.70, Cisco TelePresence Management Suite, and Cisco Multipoint Control Unit.

DHCP Config

! Local Router DHCP Configuration

```

ip dhcp pool Data
network 172.29.2.0 255.255.255.0
default-router 172.29.2.1 255.255.255.0

ip dhcp pool VoiceVideo
network 172.29.1.0 255.255.255.0
default-router 172.29.1.1 255.255.255.0
option 150 172.16.147.30
                    
```


xConfig

*c xconfiguration from the Codec

xconfig network 1

*c xConfiguration Network 1 VLAN Voice Mode: Off

---snip---

*c xConfiguration Network 1 DNS Server 1 Address: "172.31.250.5"

*c xConfiguration Network 1 DNS Server 2 Address: "172.16.250.5"

*c xConfiguration Network 1 DNS Server 3 Address: "172.20.250.5"

*c xConfiguration Network 1 DNS Server 4 Address: "198.5.1.4"

*c xConfiguration Network 1 DNS Server 5 Address: ""

*c xConfiguration Network 1 DNS Domain Name: "dca223.local"

-- snip --

*c xConfiguration Network 1 MTU: 1360

*c xConfiguration Network 1 TrafficControl Mode: On

*c xConfiguration Network 1 RemoteAccess Allow: ""

*c xConfiguration Network 1 IPv4 SubnetMask: "255.255.255.128"

*c xConfiguration Network 1 IPv4 Gateway: "172.29.1.1"

*c xConfiguration Network 1 IPv4 Address: "172.29.1.221"

-- snip --

*c xConfiguration NetworkServices H323 Mode: On

*c xConfiguration NetworkServices SIP Mode: On

*c xConfiguration NetworkServices NTP Mode: Manual

*c xConfiguration NetworkServices NTP Address: "172.16.250.5"

The C-Series endpoint (codec) does not register with the Video Communication Server that is located in a different network. Based on the exhibits, what could be causing the issue?

- A. The subnet mask on the codec is incorrect.
- B. The ip address of the codec is incorrect.
- C. The interface that the codec is in is in the wrong VLAN.
- D. The codec did not receive a DHCP address from the DHCP server.

Answer: A

NEW QUESTION 755

.....

THANKS FOR TRYING THE DEMO OF OUR PRODUCT

Visit Our Site to Purchase the Full Set of Actual 210-065 Exam Questions With Answers.

We Also Provide Practice Exam Software That Simulates Real Exam Environment And Has Many Self-Assessment Features. Order the 210-065 Product From:

<https://www.2passeasy.com/dumps/210-065/>

Money Back Guarantee

210-065 Practice Exam Features:

- * 210-065 Questions and Answers Updated Frequently
- * 210-065 Practice Questions Verified by Expert Senior Certified Staff
- * 210-065 Most Realistic Questions that Guarantee you a Pass on Your FirstTry
- * 210-065 Practice Test Questions in Multiple Choice Formats and Updatesfor 1 Year