

Microsoft

Exam Questions 70-341

Core Solutions of Microsoft Exchange Server 2013



NEW QUESTION 1

DRAG DROP

You are evaluating the implementation of a second Edge Transport server named EDGE2 in the Amsterdam office. You need to recommend which tasks must be performed to ensure that email messages can be sent by the organization if a single Edge Transport server fails. Which three actions should you include in the recommendation? To answer, move the three appropriate actions from the list of actions to the answer area and arrange them in the correct order.

Actions	Answer Area
From EDGE2, run the exportedgeconfig.ps1 script.	
Update the Send connectors on both Edge Transport servers.	
From EDGE1, run the exportedgeconfig.ps1 script.	
Create a new Edge Subscription to EDGE2.	
From EDGE2, run the importedgeconfig.ps1 script.	
Create a new Edge Subscription to EDGE1.	
From EDGE1, run the importedgeconfig.ps1 script.	

Answer:

Explanation: From EDGE1, run the exportedgeconfig.ps1 script. From EDGE2, run the importedgeconfig.ps1 script. Create a new Edge Subscription to EDGE2.

NEW QUESTION 2

An administrator recommends removing EDGE1 from the implementation plan and adding a new Client Access server named CAS-8 instead. You need to identify which anti-spam feature will NOT be available on CAS-8. Which anti-spam feature should you identify?

- A. Connection Filtering
- B. Sender Filtering
- C. Content Filtering
- D. Recipient Filtering

Answer: A

NEW QUESTION 3

DRAG DROP

You need to recommend to a solution to deploy the Outlook app. Which three actions should you recommend performing in sequence?

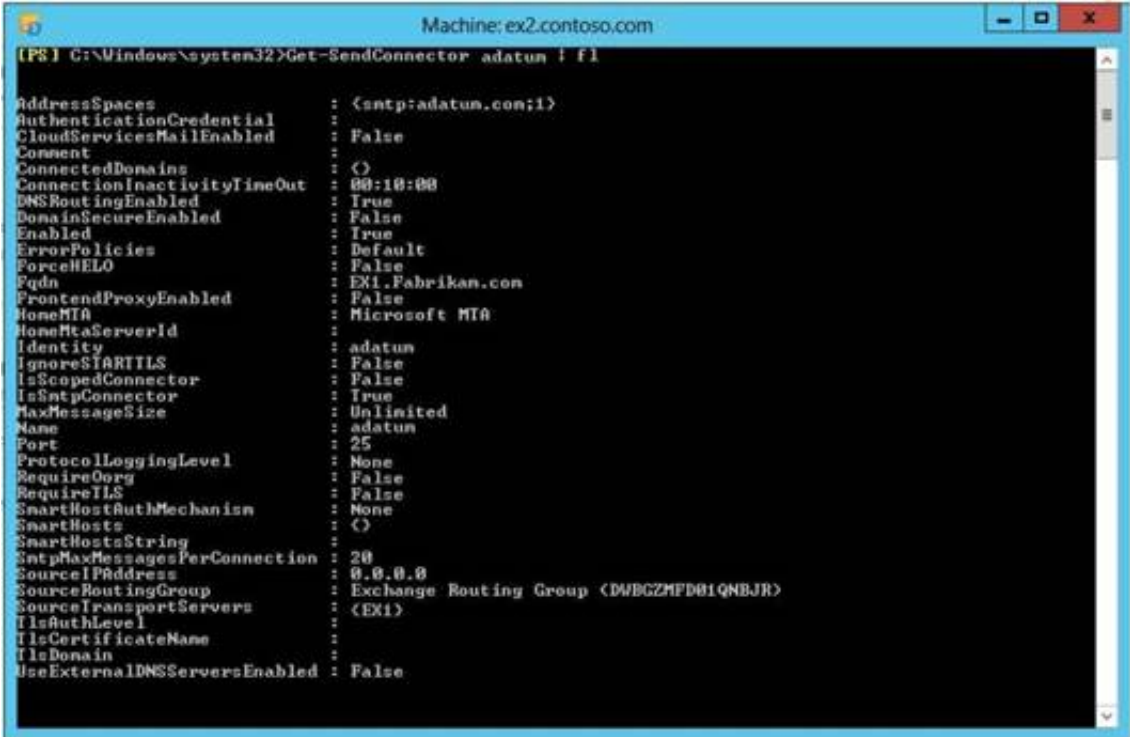
Answer Area
Run the \$Data=Get-Content -Path "C:\Apps\SocialMediaApp.xml" -Encoding Byte -ReadCount 0 command.
Run the New-App -FileData \$Data command.
Run the Set-App cmdlet.
Run the Get-App cmdlet.
Install the Outlook app.

Answer:

Explanation: Install the Outlook app.
Run the Get-App cmdlet. Run the Set-App cmdlet.

NEW QUESTION 4

You are testing the planned implementation of Domain Security.
 You discover that users fail to exchange domain-secured email messages.
 You open the Exchange Management Shell and discover the output shown in the exhibit. (Click the Exhibit button.)



You need to ensure that users can exchange email messages by using Domain Security. Which two parameters should you modify by using the Set-SendConnector cmdlet? (Each correct answer presents part of the solution. Choose two.)

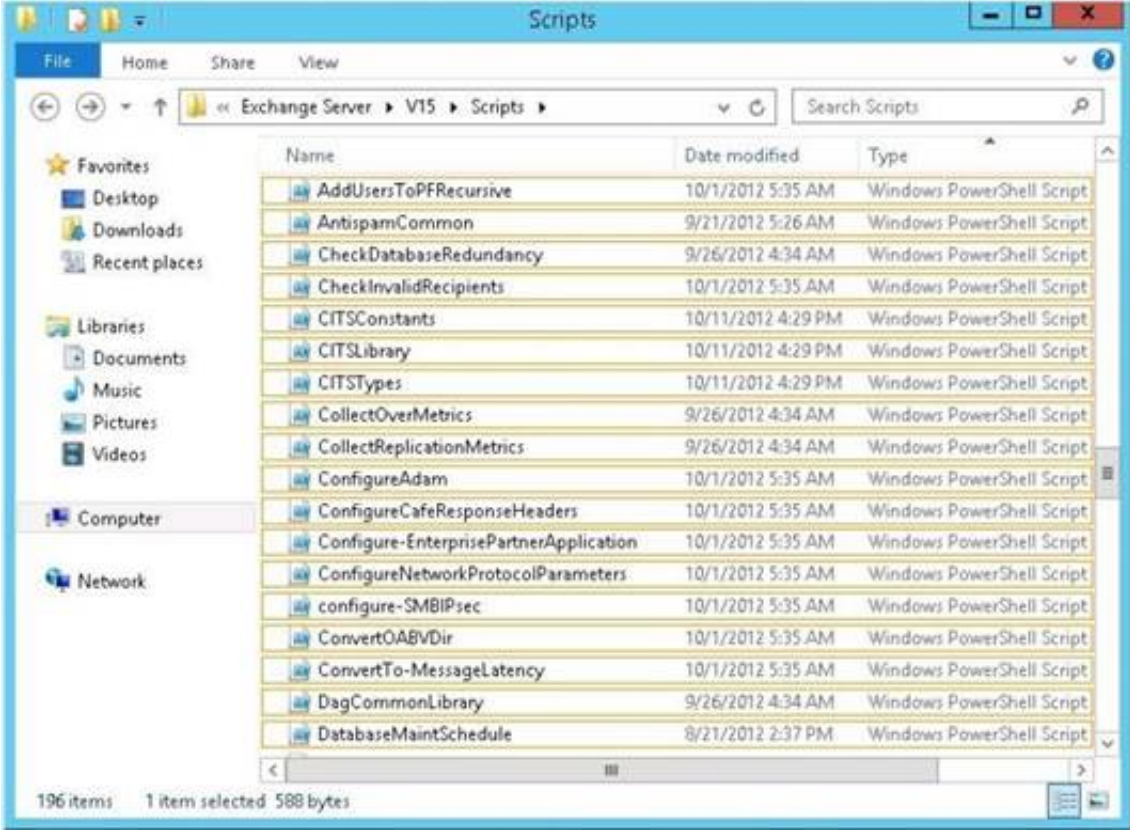
- A. tlsauthlevel
- B. requiretls
- C. ignorestarttls
- D. tlsdomain
- E. domainsecureenabled
- F. smarthostauthmechanism

Answer: BE

NEW QUESTION 5

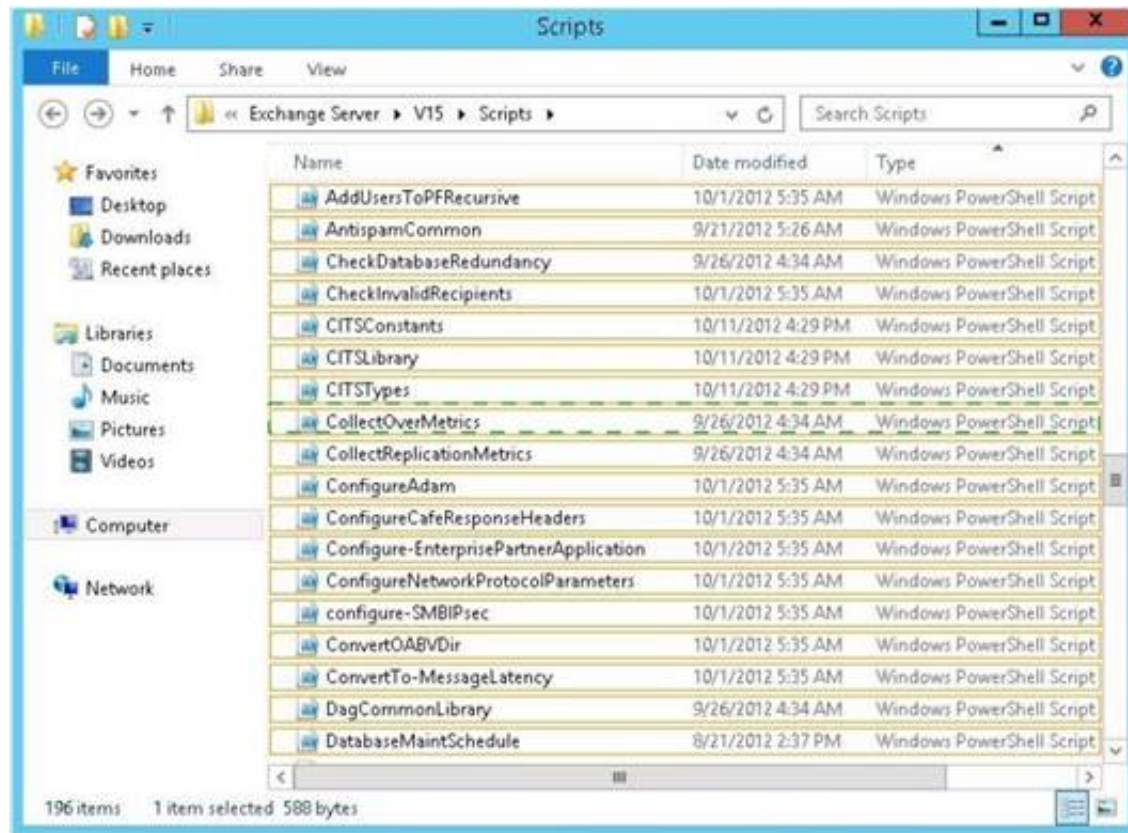
HOTSPOT

You need to recommend which script the administrators must run to create the reports required to meet the technical requirements.
 Which script should you recommend?
 To answer, select the appropriate script in the answer area.



Answer:

Explanation:



NEW QUESTION 6

You need to recommend which type of group must be used to create the planned department lists.

Which type of group should you recommend?

- A. Universal Distribution
- B. Dynamic Distribution
- C. Global Security
- D. Universal Security

Answer: A

NEW QUESTION 7

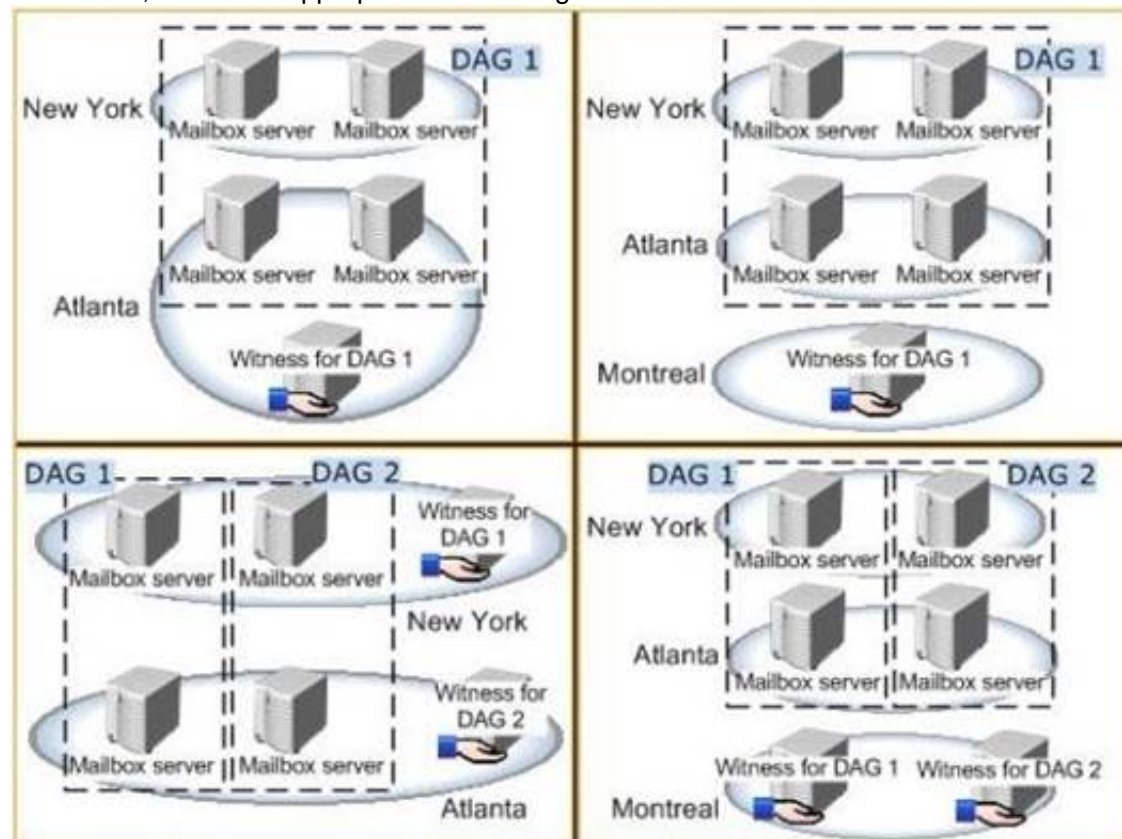
HOTSPOT

You are evaluating a DAG design for the New York and Atlanta offices.

You need to ensure that all of the users in the New York and Atlanta offices can access their mailbox if the WAN link fails.

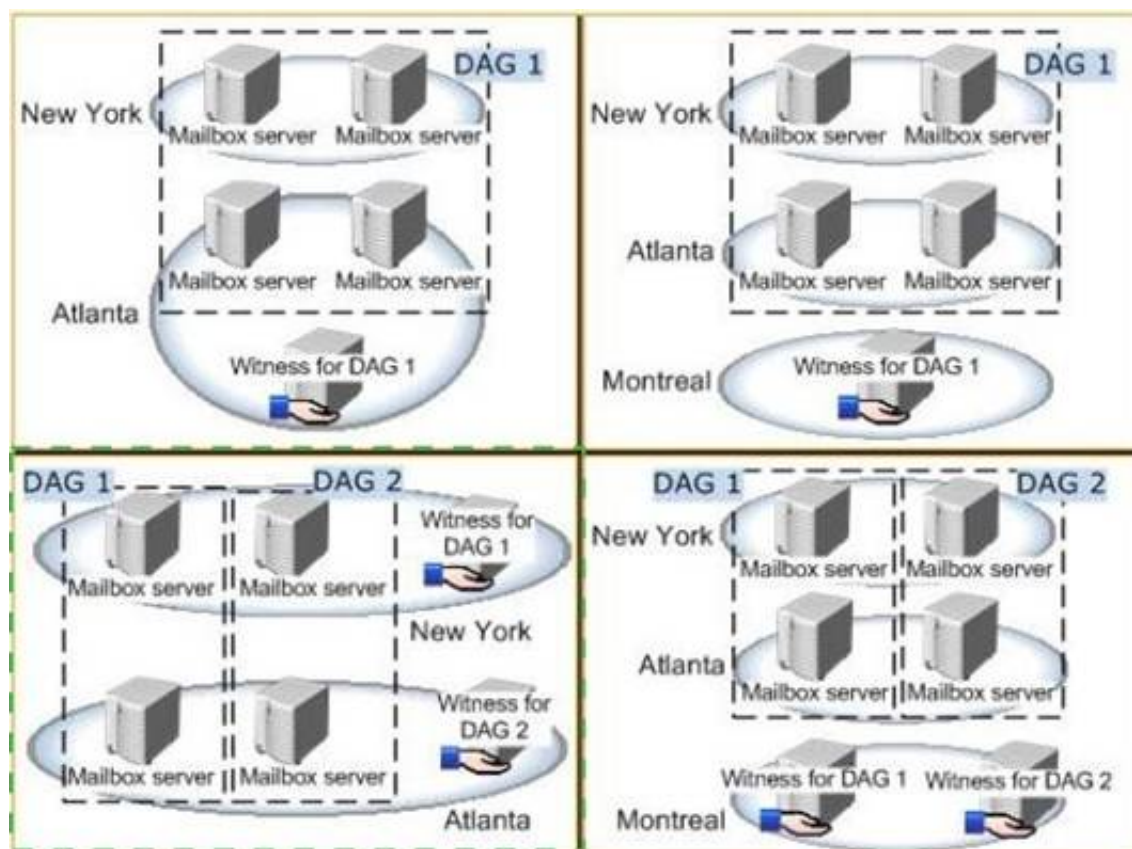
Which DAG design should you deploy?

To answer, select the appropriate DAG design in the answer area.



Answer:

Explanation:



NEW QUESTION 8

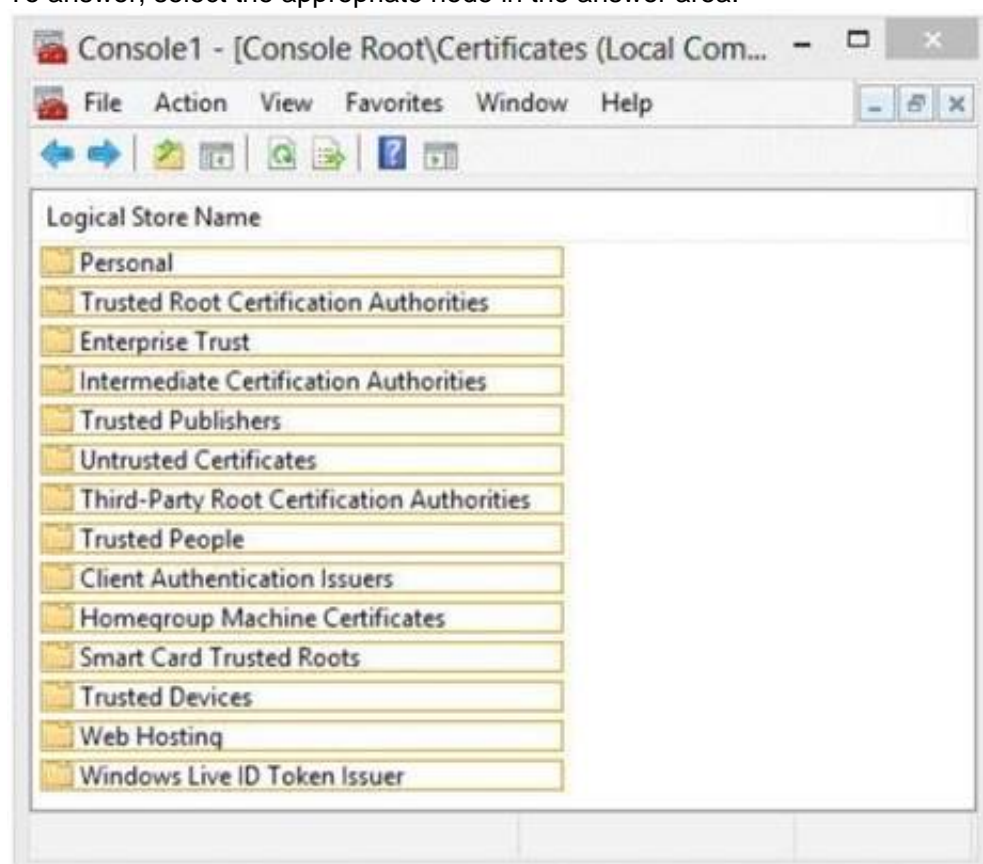
HOTSPOT

You discover that one of the Client Access servers in the New York office does not trust the standalone CA.

You need to ensure that all of the users who have Windows Phone devices can connect successfully to their mailbox.

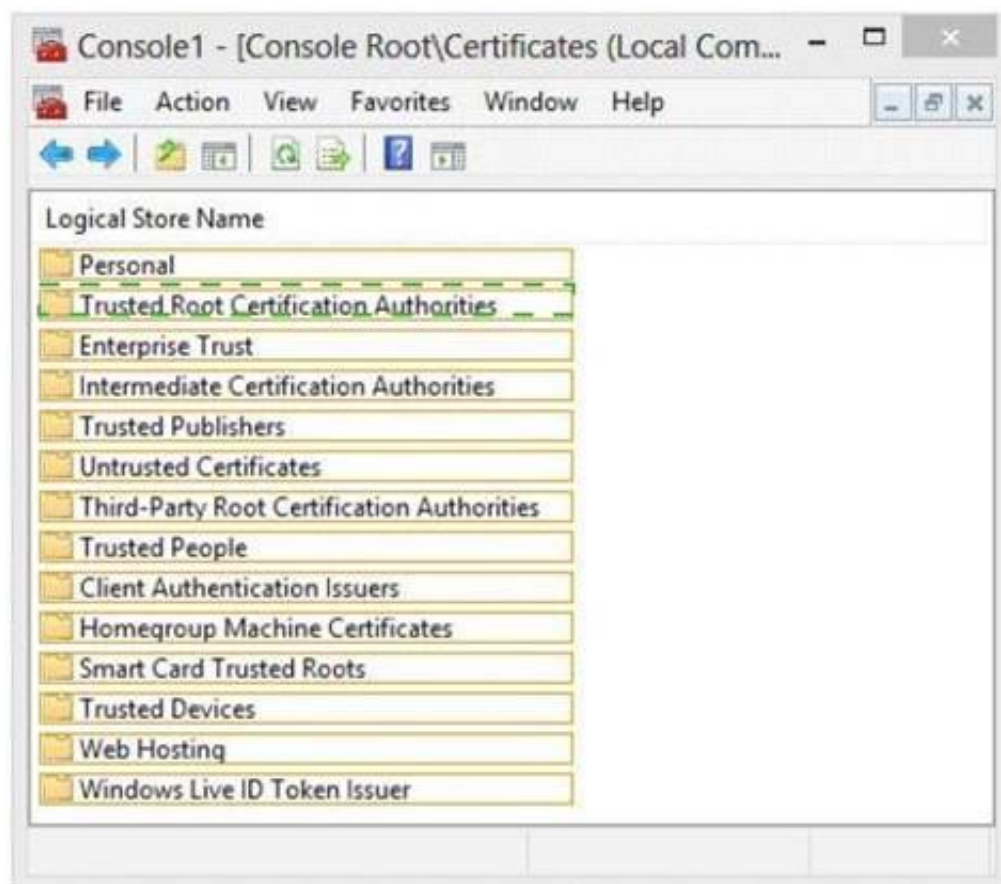
In which node should you install the root CA certificate?

To answer, select the appropriate node in the answer area.



Answer:

Explanation:



NEW QUESTION 9

You need to identify which business requirement will be met by implementing the planned hardware load balancer. Which business requirement should you identify?

- A. Minimize the hardware costs required for a load balancing solution.
- B. Minimize the software costs required for a load balancing solution.
- C. Minimize user interruptions if a service fails on a Client Access server.
- D. Minimize user interruptions if a service fails on a Mailbox server.

Answer: C

NEW QUESTION 10

You need to prevent several users in the Miami office from establishing more than two concurrent Exchange ActiveSync connections to the Exchange Server organization. The solution must affect only the users in the Miami office. Which two actions should you perform? (Each correct answer presents part of the solution. Choose two.)

- A. Create a new throttling policy that has the Organization scope.
- B. Create a new throttling policy that has the Global scope.
- C. Create a new throttling policy that has the Regular scope.
- D. Run the Set-ThrottlingPolicyAssociation cmdlet.
- E. Run the Set-ThrottlingPolicy cmdlet.
- F. Remove the default throttling policy.

Answer: CD

NEW QUESTION 10

You need to ensure that all of the email messages sent from the Internet to adatum.com are routed through the contoso.com organization. What should you create in contoso.com? (Each correct answer presents part of the solution. Choose all that apply.)

- A. A contact object for each adatum.com recipient
- B. An internal relay accepted domain for adatum.com
- C. A Send connector that is configured to point to the contoso.com transport servers
- D. A Send connector that is configured to point to the adatum.com transport servers
- E. An authoritative accepted domain for adatum.com

Answer: BD

Explanation: Topic 3, Litware, Inc

Overview

Litware, Inc., is a manufacturing company located in North America.

The company has a main office and two branch offices. The main office is located in Chicago. The branch offices are located in Baltimore and Los Angeles.

Existing Environment

Active Directory Environment

The network contains one Active Directory forest named litwareinc.com. Each office is configured as an Active Directory site.

All domain controllers in the Los Angeles office run Windows Server 2008 R2. All domain controllers in the Chicago office run Windows Server 2003 Service Pack 1 (SP1). All domain controllers in the Baltimore office run Windows Server 2012.

All of the FSMO roles are located on a domain controller in the Baltimore office. All of the domain controllers are configured as global catalog servers.

You have a distribution group for each department. The distribution groups contain all of the users in each respective department.

Network Infrastructure

The servers in each office are configured as shown in the following table.

Office location	Server name	Server role	Exchange Server version
Los Angeles	LA-EX1	Mailbox server	Exchange Server 2010
Los Angeles	LA-EX2	Client Access server Hub Transport server	Exchange Server 2010
Baltimore	BA-EX1	Mailbox server Client Access server Hub Transport server	Exchange Server 2007

The Baltimore and Chicago offices have independent Internet connections. Internet connectivity for the Los Angeles office is provided through Chicago. Users frequently send large email messages to other users in the company. Recently, you increased the maximum message size to 50 MB.

Planned Changes

The company plans to deploy a new Exchange Server 2013 infrastructure that will contain two Clients Access servers and two Mailbox servers in the Chicago office. The servers will be configured as shown in the following table.

Server name	Server role
CH-EX2	Mailbox server
CH-EX3	Mailbox server
CH-EX4	Client Access server
CH-EX5	Client Access server

All client connections to the Exchange Server organization will be routed through a hardware load balancer. The name client.litwareinc.com will point to the virtual IP address of the hardware load balancer.

Once the transition to Exchange Server 2013 in the Chicago office is complete, all mail flow to and from the Internet will be managed centrally through that office by using a Send connector that has the following configurations:

? Connector name: CH-to-Internet

? Address space: *

? Source servers: CH-EX2, CH-EX3

? Cost: 10

NEW QUESTION 15

HOTSPOT

You need to identify which names must be used as the URLs of each virtual directory on the planned Exchange Server 2013 servers.

Which names should you identify?

To answer, configure the appropriate name for each server in the answer area.

Answer Area

CH-EX2

CH-EX2.litwareinc.com
CH-EX3.litwareinc.com
CH-EX4.litwareinc.com
CH-EX5.litwareinc.com
client.litwareinc.com
outlook.litwareinc.com

CH-EX3

CH-EX2.litwareinc.com
CH-EX3.litwareinc.com
CH-EX4.litwareinc.com
CH-EX5.litwareinc.com
client.litwareinc.com
outlook.litwareinc.com

CH-EX4

CH-EX2.litwareinc.com
CH-EX3.litwareinc.com
CH-EX4.litwareinc.com
CH-EX5.litwareinc.com
client.litwareinc.com
outlook.litwareinc.com

CH-EX5

CH-EX2.litwareinc.com
CH-EX3.litwareinc.com
CH-EX4.litwareinc.com
CH-EX5.litwareinc.com
client.litwareinc.com
outlook.litwareinc.com

Answer:

Explanation:

Answer Area

CH-EX2

CH-EX2.litwareinc.com

CH-EX3.litwareinc.com

CH-EX4.litwareinc.com

CH-EX5.litwareinc.com

client.litwareinc.com

outlook.litwareinc.com

CH-EX3

CH-EX2.litwareinc.com

CH-EX3.litwareinc.com

CH-EX4.litwareinc.com

CH-EX5.litwareinc.com

client.litwareinc.com

outlook.litwareinc.com

CH-EX4

CH-EX2.litwareinc.com

CH-EX3.litwareinc.com

CH-EX4.litwareinc.com

CH-EX5.litwareinc.com

client.litwareinc.com

outlook.litwareinc.com

CH-EX5

CH-EX2.litwareinc.com

CH-EX3.litwareinc.com

CH-EX4.litwareinc.com

CH-EX5.litwareinc.com

client.litwareinc.com

outlook.litwareinc.com

NEW QUESTION 20

You need to recommend changes to the network to ensure that you can deploy the planned Exchange Server 2013 infrastructure. What should you recommend?

- A. Transfer of the FSMO roles to a domain controller in the Chicago office.
- B. Change the forest functional level.
- C. Change the domain functional level.
- D. Change the operating system on one of the domain controllers in the Chicago office

Answer: D

NEW QUESTION 22

You are testing the planned implementation of Exchange Server 2013.

After you begin moving several mailboxes to Exchange Server 2013, you discover that users on the internal network that have been moved are prompted repeatedly for their credentials when they run Microsoft Outlook.

You run the Get-OutlookAnywhere cmdlet on CH-EX4, and receive the following output:

```
SSLOffloading: True
ExternalHostname: Client.litwareinc.com
InternalHostname: CH-EX4.litwareinc.com
ExternalClientAuthenticationMethod: Basic
InternalClientAuthenticationMethod: NTLM
IISAuthenticationMethods: <Basic>
```

You need to prevent the internal users from being prompted for their credentials when they connect to their mailbox by using Outlook. Which property should you modify by using the Set-OutlookAnywhere cmdlet?

- A. IISAuthenticationMethods
- B. InternalHostname
- C. ExternalHostname
- D. ExternalClientAuthenticationMethod

E. InternalClientAuthenticationMethod

Answer: A

NEW QUESTION 25

You need to recommend which tasks must be performed to deliver email messages to the Internet if CH-EX2 and CH-EX3 fail to connect to the Internet. The solution must ensure that all queued email is sent.

Which two tasks should you recommend? (Each correct answer presents part of the solution. Choose two.)

- A. Run the retry-queue ch-to-internet command.
- B. Create a new Send connector on a server in the Baltimore office.
- C. Modify the cost of the CH-to-Internet Send connector.
- D. Run the set-sendconnector -identity ch-to-internet -frontendproxyenabled \$true command.
- E. Disable the CH-to-Internet Send connector.

Answer: BE

NEW QUESTION 29

DRAG DROP

You are planning the upgrade to Exchange Server 2013.

You plan to perform the following tasks:

? Identify the number of email messages sent and received by the users in the current Exchange Server organization.

? Identify how many IOPS are required to provide adequate access to mailboxes for

all of the users in the planned organization.

? Validate that all of the planned servers will meet the IOPS requirements of the planned organization.

You need to identify which tool must be used to achieve each task. Which tools should you identify?

To answer, drag the appropriate tool to the correct task in the answer area. Each tool may be used once, more than once, or not at all. Additionally, you may need to drag the split bar between panes or scroll to view content.

Tools	Answer Area
Exchange Mailbox Server Role Requirements Calculator	Identify the number of email messages sent and received by the users in the current Exchange Server organization. Tool
Microsoft Exchange Server Deployment Assistant	Identify how many IOPS are required to provide adequate access to mailboxes for all of the users in the planned organization. Tool
Microsoft Exchange Server Jetstress 2010	Validate that all of the planned servers will meet the IOPS requirements of the planned organization. Tool
Microsoft Exchange Server Profile Analyzer	

Answer:

Explanation: Box 1: Microsoft Exchange Server Profile Analyzer

Box 2: Exchange Mailbox Server Role Requirements Calculator Box 3: Microsoft Exchange Server JetStress 2010

NEW QUESTION 32

DRAG DROP

You need to create and configure a hierarchical address book (HAB) named Litware to reflect the company's organizational chart.

Which three actions should you perform?

To answer, move the three appropriate actions from the list of actions to the answer area and arrange them in the correct order.

Actions	Answer Area
Create an organizational unit (OU) named Litware.	
Run the Set-OrganizationConfig cmdlet and specify the - <i>hierarchicaladdressbookroot</i> parameter.	
Run the Set-Group cmdlet and specify the - <i>ishierarchicalgroup</i> parameter for each distribution group in the HAB.	
Create a root distribution group named Litware.	
Set the SeniorityIndex parameter of each distribution group in the HAB.	

Answer:

Explanation: Box 1: Create a root distribution group named Litware. Box 2:

Run the **Set-OrganizationConfig** cmdlet and specify the `-hierarchicaladdressbookroot` parameter.

Box 3: Run the Set-Group cmdlet and specify the `-ishierarchicalgroup` parameter for each distribution group in the HAB.

Topic 4, A.Datum Corporation

Overview

A. Datum Corporation is an airline catering company that has 8,000 users. A. Datum has three main offices. The offices are located in Detroit, Chicago, and New York.

Existing Environment

Active Directory Environment

The network contains an Active Directory forest named adatum.com. The forest contains a single domain. All domain controllers run Windows Server 2012.

Each main office contains two domain controllers. Each office is configured as an Active Directory site.

The functional level of the forest is Windows Server 2012.

Network Infrastructure

The offices connect to each other by using a dedicated WAN link. Only the office in New York and the office in Detroit connect directly to the Internet. Each office has a firewall.

The public DNS records for A. Datum are configured as shown in the following table.

DNS record name	Record type	Data
Adatum.com	Mail exchanger (MX)	[10] mail.adatum.com
Mail.adatum.com	Host (A)	131.107.1.200
Autodiscover.adatum.com	Alias (CNAME)	Mail.adatum.com
Detroitmail.adatum.com	Host (A)	131.107.2.200
Autodiscover.detroit.adatum.com	Alias (CNAME)	Detroitmail.adatum.com
@	Text (TXT)	V=spf1 ip4:131.107.1.200 -all

The external interface for the firewall in the New York office is configured to use an IP address of 131.107.1.200 and to pass inbound traffic on port 25 and port 443 to EX2.

The external interface for the firewall in the Detroit office is configured to use an IP address of 131.107.2.200 and to pass inbound traffic on port 443 to EX4.

The Active Directory site is configured as shown in the Sites exhibit. (Click the Exhibit button.)

Exchange Server Organization

A. Datum has an Exchange Server 2013 organization that contains two servers. The servers are configured as shown in the following table.

Server name	Role	Site
EX1	Mailbox Client Access	Chicago
EX2	Mailbox Client Access	New York

Each server contains 15 mailbox databases.

Users use the name mail.adatum.com to connect to their mailbox from the Internet. The users use the FQDN of the servers to connect from the internal network. AM of the users in the Detroit office have a mailbox hosted on EX2.

The default email address policy contains a single email address format of @adatum.com. A separate Send connector exists for the Chicago office and the New York office. The local

servers in each office are the only source servers in each Send connector.

The New York office is configured as a hub site. Antimalware filtering is disabled on EX1 and EX2.

Problem Statements

A. Datum identifies the following issues:

? Users in the Detroit office report that sometimes, Microsoft Outlook takes a long time to open.

? During a recent storage failure, administrators failed to restore the latest backup and lost all of the email messages from the previous 48 hours.

? Users report that the email messages sent to some Internet domains are not received. Users in the Chicago office report that some of their email messages generate a non-delivery report (NDR).

? The help desk in the New York office reports that its most common Exchange- related task is to restore email messages that were deleted by users more than 14 days ago. The task requires time-consuming restore operations by the help desk.

Requirements

Business Requirements

A. Datum wants to provide users with the ability to access their email from Internet Explorer 10, even when the users are disconnected from the network. This ability must only be available if the users log on to Outlook Web Access by using the Private option.

Planned Changes

You plan to deploy three additional Exchange Server 2013 servers. The servers will be configured as shown in the following table.

Server name	Role	Site
EX3	Mailbox	Detroit
EX4	Client Access	Detroit
EX5	Client Access	New York

After the planned deployment, all of the mailboxes of the Detroit office users will be moved to EX3. All of the Detroit office users will use the name detroitmail.adatum.com when they connect from the Internet and the name ex4.adatum.com when they connect from the internal network.

Technical Requirements

A. Datum identifies the following technical requirements:

? All existing and future mailboxes must be limited to 5 GB of storage.

- ? Antimalware and anti-spam filtering must be enabled for the entire Exchange Server organization.
 - ? If storage for the mailbox database fails, administrators must be able to recover email messages handled by transport services for to the last five days.
 - ? Only the members of a group named Executives must be able to schedule meetings in a room mailbox named Boardroom. Meeting requests must not be moderated.
 - ? All of the servers in the New York office that have the Client Access server role installed must be accessed by using a load balancing solution that can mark a server as down if a specific URL on the server is unavailable.
- Mailbox Creation Requirements
- A. Datum identifies the following requirements for creating new mailboxes:
- ? All mailboxes must automatically have single item recovery enabled.
 - ? All mailboxes must automatically have the Exchange ActiveSync feature disabled.

NEW QUESTION 36

HOTSPOT

You need to recommend a solution to meet the technical requirements for email message recovery.
 Which command should you include in the recommendation? (To answer, configure the appropriate options in the answer area.)

Answer Area

5.0:00:00

Answer Area

5.0:00:00

Set-MailboxTransportService
Set-TransportConfig
Set-TransportServer
Set-TransportService

-MaxDumpsterTime
-MessageExpirationTimeout
-SafetyNetHoldTime
-ShadowMessageAutoDiscardInterval

Answer:

Explanation:

Answer Area

5.0:00:00

Set-MailboxTransportService
Set-TransportConfig
Set-TransportServer
Set-TransportService

-MaxDumpsterTime
-MessageExpirationTimeout
-SafetyNetHoldTime
-ShadowMessageAutoDiscardInterval

NEW QUESTION 40

You are evaluating the deployment of the additional Exchange Server 2013 servers.
 You need to recommend changes to the transport configurations to ensure that all email messages sent from the Detroit office are routed through EX2.
 What should you include in the recommendation?

- A. Increase the cost of the CHI-NY site link to 15.
- B. Specify an Exchange-specific cost of 20 for the CHI-DET site link.
- C. Decrease the cost of the CHI-NY and the DET-NY site links to 4.
- D. Increase the cost of the DET-NY site link to 15.

Answer: B

NEW QUESTION 41

You need to recommend a solution to resolve the issue of email messages not being received on the Internet.
 What should you include in the solution?

- A. Modify the CNAME record.
- B. Add an MX record.
- C. Modify the TXT record.
- D. Add a pointer (PTR) record.

Answer: D

NEW QUESTION 43

HOTSPOT

You need to recommend a solution to meet the technical requirements for mailbox size restrictions.
 Which command should you include in the recommendation? (To answer, select the appropriate options in the answer area.)

Answer Area		
<div><div></div><div>Get-Mailbox Get-MailboxDatabase Set-Mailbox Set-MailboxDatabase</div></div>	<div><div></div><div>Get-Mailbox Get-MailboxDatabase Set-Mailbox Set-MailboxDatabase</div></div>	<div><div></div><div>-IssueWarningQuota -ProhibitSendQuota -ProhibitSendReceiveQuota</div></div> 5GB

Answer:

Explanation:

Answer Area		
<div><div></div><div>Get-Mailbox Get-MailboxDatabase Set-Mailbox Set-MailboxDatabase</div></div>	<div><div></div><div>Get-Mailbox Get-MailboxDatabase Set-Mailbox Set-MailboxDatabase</div></div>	<div><div></div><div>-IssueWarningQuota -ProhibitSendQuota -ProhibitSendReceiveQuota</div></div> 5GB

NEW QUESTION 45

You need to recommend a solution for the New York office that meets the technical requirements for client access.
What should you include in the recommendation? (Each correct answer presents a complete solution. Choose all that apply.)

- A. DNS round robin
- B. a Layer 4 hardware load balancer
- C. a Layer 7 hardware load balancer
- D. the Network Load Balancing (NLB) feature
- E. a Client Access server array

Answer: CE

NEW QUESTION 49

You are evaluating the planned deployment of the additional Exchange Server 2013 servers.
You need to recommend changes to the DNS records to ensure that email messages are routed to the Detroit site if the servers in the New York site are unavailable.
What should you recommend adding?

- A. An MX record that has a preference value of 10 that points to EX4
- B. An MX record that has a preference value of 20 that points to EX4
- C. An MX record that has a preference value of 10 that points to EX3
- D. An MX record that has a preference value of 20 that points to EX3

Answer: B

Explanation: Topic 5, Proseware, Inc

Overview

General Overview

Proseware, Inc., is an international manufacturing company that has 3,000 users. Proseware has a sales department, a marketing department, a research department, and a human resources department.

Proseware recently purchased a small competitor named Contoso, Ltd.

Physical Locations

Proseware has two offices. The offices are located in New York and London. The offices connect to each other by using a WAN link. Each office connects directly to the Internet. Contoso has one office in Chicago.

Existing Environment

Active Directory Environment

The network of Proseware contains an Active Directory forest named proseware.com. The forest contains a single domain and two sites named London and New York. Each site contains two domain controllers that run Windows Server 2008 R2. The domain controllers in the New York site are named DC1 and DC2. The domain controllers in the London site are named DC3 and DC4.

All FSMO roles are hosted on DC3 and DC4.

The network of Contoso contains an Active Directory forest named contoso.com. The forest contains five domain controllers and one site.

Exchange Server Organization

Proseware has an Exchange Server 2013 organization that contains two database

availability groups (DAGs) named DAG-NYC and DAG-LON. The DAGs are configured as shown in the following table.

Server name	Role	Site	DAG membership
EX1	Client Access Mailbox	New York	DAG-NYC
EX2	Client Access Mailbox	New York	DAG-NYC
EX3	Client Access Mailbox	London	DAG-NYC
EX4	Client Access Mailbox	London	DAG-LON
EX5	Client Access Mailbox	London	DAG-LON
EX6	Client Access Mailbox	New York	DAG-LON

The certificate used for Exchange Server 2013 has a subject name of mail.proseware.com and a Subject Alternative Name (SAN) of autodiscover.proseware.com. Each mailbox database has three copies. All users connect to an active copy of the database on a server in their respective office. Native data protection is implemented.

NTLM communication is used exclusively for Outlook Anywhere both internally and externally.

Problem Statements

Proseware identifies the following issues:

? Users report that sometimes, they fail to access the free/busy information of the other users. You also discover that some users fail to retrieve Autodiscover settings.

? Users in the London office report that during a 24-hour WAN outage, they could see only new users in the global address list (GAL) from Outlook Web App.

? The manager of the human resources department in the New York office cannot see new London office users in the GAL until several hours after the help desk confirms that the users were created.

? A hung MSExchangeOWAAppPool in Internet Information Services (IIS) on EX1 causes all of the database copies to fail over. Despite having the same CopyQueueLength and ReplayQueueLength as the copies on EX2, the copies on EX3, which have a higher activation preference, are activated, forcing user connections over the WAN.

? A custom application named App1 recently malfunctioned and sent hundreds of false positive email notifications that had a subject of System Alert: Sales Database Reaching Capacity to all of the users in the organization. While attempting to remove the email messages, an administrator ran the Search-Mailbox -DeleteContent command and erroneously deleted valid email messages from the mailboxes of some executives.

Requirements Business Goal

Proseware identifies the following business goals:

? Reduce the costs associated with using bandwidth on the WAN links.

? Improve social media integration by using a Microsoft Outlook app that will be deployed to all of the users in the sales department.

Planned Changes

Proseware plans to make the following changes:

? Implement a lagged copy for the mailbox database of the executives.

? Implement an RBAC-linked role group for the administrators at Contoso to manage the mailboxes of the Proseware users.

Technical Requirements

Proseware identifies the following technical requirements:

? End users must be notified after one hour if the email messages that they send are not delivered.

? If mailbox database storage fails, the IT department must be able to recover old email messages that were sent up to five days earlier to the mailboxes of the executives.

? All new users hired at Contoso must have a user account in contoso.com and an Exchange Server mailbox in proseware.com. All new user accounts in contoso.com must have a user principal name (UPN) that ends with proseware.com.

? Administrators at Contoso must be able to create and manage recipient objects in the Exchange Server organization of Proseware by using their existing contoso.com administrator account. All Contoso recipient objects must reside in an organizational unit (OU) named proseware.com

Security Requirements

The Chief Security Officer (CSO) introduces the following security requirements:

? All Outlook users who connect from the Internet must use Basic authentication only.

? All Outlook users who connect from the internal network must use NTLM authentication only.

SLA Requirements

Due to productivity losses during some recent maintenance windows, the Chief Information Officer (CIO) introduces a new service level agreement (SLA) requiring that all servers entering or exiting a maintenance window must be taken in and out of service properly.

The SLA contains the following requirements:

? All mounted databases on the server undergoing maintenance must be activated on another server.

? All message queues on the server undergoing maintenance must be empty before maintenance can begin.

? The server undergoing maintenance must be prevented from becoming a Primary Active Manager (PAM).

? Databases copies on the server undergoing maintenance must not be activated while maintenance is occurring.

NEW QUESTION 50

HOTSPOT

You need to recommend which command must be run to remove the email notifications from all of the servers if App1 malfunctions again.

Which command should you recommend? (To answer, configure the appropriate options in the answer area.)

Answer Area

Get-Message
Get-Queue
Get-QueueDigest
Get-TransportService

Get-MessageTrackingLog
Get-MessageTrackingLogReport
Get-Queue
Suspend-Queue

Get-Message
Redirect-Message
Resume-Queue
Search-MessageTrackingReport

-ResultSize unlimited | Where {\$_Subject -eq "System Alert: Sales Database Reaching Capacity"} |

Redirect-Message
Remove-Message
Redirect-Message
Suspend-Message

Answer:

Explanation:

Answer Area

Get-Message
Get-Queue
Get-QueueDigest
Get-TransportService

Get-MessageTrackingLog
Get-MessageTrackingLogReport
Get-Queue
Suspend-Queue

Get-Message
Redirect-Message
Resume-Queue
Search-MessageTrackingReport

-ResultSize unlimited | Where {\$_Subject -eq "System Alert: Sales Database Reaching Capacity"} |

Redirect-Message
Remove-Message
Redirect-Message
Suspend-Message

NEW QUESTION 52
DRAG DROP

You need to identify which commands must be run to perform the maintenance window tasks.
Which commands should you run? (To answer, drag the appropriate commands to the correct tasks. Each command may be used once, more than once, or not at all. You may need to drag the split bar between panes or scroll to view content.)

Commands	Answer Area
Start-DatabaseAvailabilityGroup	All mounted databases on the server undergoing maintenance must be activated on another server. <div>Command</div>
Stop-DatabaseAvailabilityGroup	All message queues on the server undergoing maintenance must be empty before maintenance can begin. <div>Command</div>
Suspend-ClusterNode <ServerName>	The server undergoing maintenance must be prevented from becoming a PAM. <div>Command</div>
Set-MailboxServer <ServerName> - DatabaseCopyAutoActivationPolicy Blocked	Databases copies on the server undergoing maintenance must not be activated while maintenance is occurring. <div>Command</div>
Set-MailboxServer <ServerName> - DatabaseCopyActivationDisabledAndMoveNow \$True	
Set-ServerComponentState <ServerName> - Component HubTransport -State Draining - Requester Maintenance	
Set-ServerComponentState <ServerName> - Component ServerWideOffline -State Inactive Requester Maintenance	

Answer:

Explanation:

Commands	Answer Area
Start-DatabaseAvailabilityGroup	All mounted databases on the server undergoing maintenance must be activated on another server. <div>Set-MailboxServer <ServerName> - DatabaseCopyActivationDisabledAndMoveNow \$True</div>
Stop-DatabaseAvailabilityGroup	All message queues on the server undergoing maintenance must be empty before maintenance can begin. <div>Set-ServerComponentState <ServerName> - Component HubTransport -State Draining - Requester Maintenance</div>
Suspend-ClusterNode <ServerName>	The server undergoing maintenance must be prevented from becoming a PAM. <div>Suspend-ClusterNode <ServerName></div>
Set-MailboxServer <ServerName> - DatabaseCopyAutoActivationPolicy Blocked	Databases copies on the server undergoing maintenance must not be activated while maintenance is occurring. <div>Set-MailboxServer <ServerName> - DatabaseCopyAutoActivationPolicy Blocked</div>
Set-MailboxServer <ServerName> - DatabaseCopyActivationDisabledAndMoveNow \$True	
Set-ServerComponentState <ServerName> - Component HubTransport -State Draining - Requester Maintenance	
Set-ServerComponentState <ServerName> - Component ServerWideOffline -State Inactive Requester Maintenance	

NEW QUESTION 54

DRAG DROP

You need to recommend a solution to deploy the Outlook app.

Which three actions should you recommend performing in sequence? (To answer, move the appropriate three actions from the list of actions to the answer area and arrange them in the correct order.)

	Answer Area
Run the Set-App cmdlet.	
Run the Get-App cmdlet.	
Install the Outlook app.	
Run the \$Data=Get-Content -Path "C:\Apps\SocialMediaApp.xml" -Encoding Byte -ReadCount 0 command.	
Run the New-App -FileData \$Data command.	

Answer:

Explanation: Install the Outlook app. Run the Get-App cmdlet. Run the Set-App cmdlet.

NEW QUESTION 55

You need to recommend which actions must be performed to meet the technical requirements for the new Contoso users. u recommend? (Each correct answer presents part of the solution. Choose three.)

- A. Configure UPN suffix routing.
- B. Configure Contoso to trust Proseware.
- C. Configure Proseware to trust Contoso.
- D. Run the New-Mailbox cmdlet and specify the –AccountDisabled parameter.
- E. Run the New-Mailbox cmdlet and specify the –LinkedMasterAccount parameter.
- F. Create a linked role group.

Answer: ACE

Explanation: Topic 6, Trey Research

Overview

Trey Research is a pharmaceutical company that has 10,000 users. Most of the users work remotely, including the users in the finance department. The finance department users reside in an organizational unit (OU) named Finance.

Trey Research purchases a partner pharmaceutical company named Fabrikam, Inc. Fabrikam has 2,000 users and hosts its own Exchange Server 2010 organization.

Existing Environment

Active Directory Environment

The network of Trey Research contains an Active Directory forest. The forest contains an empty parent domain named treyresearch.com and a child domain named main.treyresearch.com. The forest contains one site named DefaultSite.

The Trey Research network and the Fabrikam network connect to each other by using a WAN link. A two-way trust exists between the Trey Research and Fabrikam networks.

Trey Research Exchange Server Organization

Trey Research has an Exchange Server 2013 organization that contains four servers. The servers are configured as shown in the following table.

Server name	Role
EX1	Mailbox
EX2	Mailbox
EX3	Client Access
EX4	Mailbox Client Access

EX1 and EX2 are the members of a database availability group (DAG) named DAG1. Trey Research has three databases named DB1, DB2, and DB3. DB1 and DB2 replicate

between all of the servers in DAG1. DB3 is mounted on EX4.

The storage on EX1 and EX2 is configured as shown in the following table.

Volume name	Contents
Volume1	DB1
Volume2	DB2
Volume3	Empty

The Exchange Server 2013 servers at Trey Research are configured as follows:

? EX3 and EX4 perform spam filtering.

- ? The public folder hierarchy mailbox is homed on DB3.
 - ? Each mailbox database contains a public folder mailbox.
 - ? HTTP traffic is load balanced by using a Layer 4 hardware load balancer.
 - ? The hardware load balancer uses the OWA virtual directory for health monitoring.
 - ? On EX1 and EX2, the mailbox database files and log files are stored on volume mount points.
 - ? IMAP is enabled on EX4 to download email messages for a custom help desk application.
 - ? Remote users access their mailbox by using Outlook Web App and Exchange ActiveSync.
 - ? The custom help desk application uses a service account that has a display name of Help Desk and an SMTP address of helpdesk@tresearch.com.
- Fabrikam Exchange Server Organization
- Fabrikam has an Exchange Server 2010 organization that contains two servers. The servers are configured as shown in the following table.

Server name	Role
FAB1	Hub Transport Client Access Mailbox
FAB2	Edge Transport

Fabrikam plans to implement the address rewrite feature to change the SMTP domain name of all outbound email to use the tresearch.com SMTP suffix.

Problem Statements

Tre Research identifies the following issues:

- ? Recently on EX2, Volume1 failed for three days. Once the volume was repaired, reseeding the database from EX1 took more than six hours.
- ? You recently discovered that when the MExchangeOWAAppPool application pool on EX3 was in a stopped state, the hardware load balancer marked EX3 as offline.
- ? Users report that during the installation of updates on the Exchange Server 2013 servers, the users lost access to their mailbox and were unable to modify public folders.
- ? Several finance department users store sensitive data on their mobile device. The legal department requires that Exchange ActiveSync be disabled for all of the finance department users.
- ? An Active Directory administrator reports that the domain controllers in the tresearch.com domain are overused. The administrator requests that the Exchange Server 2013 servers only use the domain controllers in the main.tresearch.com domain.

Requirements

Business Goal

The legal department requires that the finance department users have a segmented view of the global address list (GAL) that only shows recipients in the finance department

Planned Changes

Tre Research plans to implement the following spam confidence level (SCL) configurations:

- ? Block email messages when the SCL score is 9.
- ? Move the email messages to the postmaster mailbox when the SCL score is 7.
- ? Block email messages and send a non-delivery report (NDR) when the SCL score is 8.

Resource Utilization Requirements

Users report that their connection to Outlook Web App is slow since the deployment of IMAP on EX4. The users do not report that they experience performance issues when they use their mobile device.

Tre Research reports that the IMAP service is not business critical and must not have a higher priority over hardware resources than Outlook Web App. On EX4, Outlook Web App has the same priority over hardware resources as Exchange ActiveSync.

NEW QUESTION 60

DRAG DROP

You need to recommend a solution to resolve the user access issues that occur during the installation of updates on the Exchange Server 2013 servers. Which cmdlets should you recommend using on EX1 and EX2? (To answer, drag the appropriate cmdlet to the correct servers. Each cmdlet may be used once, more than once, or not at all. You may need to drag the split bar between panes or scroll to view content.)

Cmdlets

Resume-ClusterNode

Suspend-ClusterNode

Stop-DatabaseAvailabilityGroup

Start-DatabaseAvailabilityGroup

Set-MailboxServer

Set-ServerComponentState

Answer Area

EX1

Cmdlet

Cmdlet

Cmdlet

Cmdlet

EX2

Cmdlet

Cmdlet

Cmdlet

Cmdlet

Answer:

Explanation:

Cmdlets

Resume-ClusterNode

Suspend-ClusterNode

Stop-DatabaseAvailabilityGroup

Start-DatabaseAvailabilityGroup

Set-MailboxServer

Set-ServerComponentState

Answer Area

EX1

Suspend-ClusterNode

Stop-DatabaseAvailabilityGroup

Set-MailboxServer

Set-ServerComponentState

EX2

Resume-ClusterNode

Start-DatabaseAvailabilityGroup

Cmdlet

Cmdlet

NEW QUESTION 61

You need to configure the address books to meet the business goal for the finance department. Which four cmdlets should you use?

- A. Set-MailUser, New-OfflineAddressBook, New-AddressBookPolicy, and New-GlobalAddressList
- B. Set-MailUser, New-OfflineAddressBook, New-GlobalAddressList, and New-AddressList
- C. Set-Mailbox, New-DistributionGroup, New-AddressBookPolicy, and New-AddressList
- D. Set-Mailbox, New-OfflineAddressBook, New-GlobalAddressList, and New-AddressList
- E. Set-Mailbox, New-AddressBookPolicy, New-GlobalAddressList, and New-AddressList

Answer: D

NEW QUESTION 66

You need to recommend a solution to resolve the issue of domain controller overuse. Which cmdlet should you include in the recommendation?

- A. Set-ExchangeServer
- B. Set-OrganizationConfig
- C. Set-ADServerSettings
- D. Set-AuthConfig

Answer: A

NEW QUESTION 71

HOTSPOT

You need to recommend a solution to resolve the issue for the finance department users. Which command should you include in the recommendation? (To answer, select the appropriate options in the answer area.)

Answer Area

-OrganizationalUnit Finance | -ActiveSyncEnabled

Answer Area

Get-CasMailbox
Get-Mailbox
Get-User

 -OrganizationalUnit Finance |

Set-CasMailbox
Set-Mailbox
Set-User

 -ActiveSyncEnabled

\$false
\$null
\$true

Answer:

Explanation: Answer Area

Get-CasMailbox
Get-Mailbox
Get-User

 -OrganizationalUnit Finance |

Set-CasMailbox
Set-Mailbox
Set-User

 -ActiveSyncEnabled

\$false
\$null
\$true

NEW QUESTION 72

DRAG DROP

You are evaluating the implementation of the address rewrite feature in the Fabrikam forest.

You need to recommend a solution for the Trey Research forest and the Fabrikam forest to share the SMTP domain name of treyresearch.com. Which actions should you recommend performing in each forest? (To answer, drag the appropriate actions to the correct forests. Each action may be used once, more than once, or not at all. You may need to drag the split bar between panes or scroll to view content)

Passing Certification Exams Made Easy

visit - <https://www.surepassexam.com>

Actions	Answer Area
Create mail-enabled users.	Trey Research forest <input type="text" value="Action"/>
Create mail-enabled contacts.	<input type="text" value="Action"/>
Create a Send connector.	<hr/>
Create a Receive connector.	Fabrikam forest <input type="text" value="Action"/>
Configure an authoritative accepted domain.	
Configure an accepted domain as an internal relay domain.	

Answer:

Explanation: Trey research forest
Configure authoritative accepted domain
Create send connector
Fabricam Forest
Configure an accepted domain as an internal relay domain

NEW QUESTION 76

You need to ensure that users can create new public folders when EX4 is unavailable. What should you do?

- A. Run the New-PublicFolderMoveRequest cmdlet.
- B. Add EX4 to DAG1.
- C. Create a new public folder database.
- D. Run the New-MoveRequest cmdlet.

Answer: B

Explanation: Topic 7, Mix Questions

NEW QUESTION 77

You have an Exchange Server 2013 organization that contains an accepted domain named contoso.com. A partner company has an Exchange Server 2013 organization named nwtraders.com. Nwtraders.com contains an SMTP server named mail.nwtraders.com. Both organizations only use certificates from the same trusted third-party certification authority (CA). You need to ensure that all email messages received from the SMTP domain named nwtraders.com are protected by using mutual TLS. What command should you run? (To answer, select the appropriate options in the answer area.)

Answer Area

<input type="text"/>	<input type="text"/>	<input type="text"/>
----------------------	----------------------	----------------------

Answer Area

<input type="text"/>	<input type="text"/>	<input type="text"/>
Set-DeliveryAgentConnector Set-ReceiveConnector Set-TransportConfig	-SourceTransportServers -TlsDomainCapabilities -TLSSReceiveDomainSecureList -TLSSendDomainSecureList	Contoso.com Mail.nwtraders.com nwtraders.com

Answer:

Explanation: **Answer Area**

<input type="text"/>	<input type="text"/>	<input type="text"/>
Set-DeliveryAgentConnector Set-ReceiveConnector Set-TransportConfig	-SourceTransportServers -TlsDomainCapabilities -TLSSReceiveDomainSecureList -TLSSendDomainSecureList	Contoso.com Mail.nwtraders.com nwtraders.com

NEW QUESTION 79

A company named Contoso, Ltd. has an Exchange Server 2013 organization that contains two servers. Contoso has a subsidiary named Fabrikam, Inc. All users have mailboxes in the Contoso organization. You implement an address book policy (ABP) for the users from Fabrikam. A company policy states that the users from Contoso must not be able to view the contact cards of the Fabrikam users. You need to implement a solution to meet the requirement of the company policy. Which two actions should you perform? Each correct answer presents part of the solution.

- A. Run the New-TransportRule cmdlet
- B. Modify the properties of the ABP.
- C. Run the Set-TransportConfig cmdlet.
- D. Run the Set-Mailbox cmdlet.
- E. Install and Enable the Address Book Policy Routing agent.
- F. Modify the properties of the global address list (GAL).

Answer: EF

NEW QUESTION 81

You have an Exchange Server 2013 organization and a Microsoft Office 365 tenant that are configured for hybrid coexistence. Five hundred users have mailboxes in the Exchange Server 2013 organization. Six hundred users have mailboxes in Office 365. You need to implement a mailbox solution for the support department. The solution must meet the following requirements:

- All users must be able to send email messages to a dedicated mailbox for support.
- All of the users from the support department must be able to log on to the dedicated support mailbox and read the email messages in the mailbox.
- All of the users from the support department must be able to reply to the email messages sent to the dedicated support mailbox. The replies must identify to the name of the user replying.
- Must apply the principle of least privileges.

What should you do? To answer, select the appropriate options in the answer area.

Answer area

Type of mailbox:

▼

Linked Mailbox
User Mailbox
Public Folder Mailbox

Mailbox permission:

▼

Read and Send As
Read and Send on Behalf of
Full Access and Send As
Full Access and Send on Behalf of

Answer:

Explanation: References:
<https://support.office.com/en-us/article/give-mailbox-permissions-to-another-user-in-office-365-admin-help-1db>

NEW QUESTION 82

You have an Exchange Server 2013 organization named adatum.com. The organization contains two servers named EX1 and EX2 that are configured as shown in the table.

Server name	Role
EX1	Mailbox, Client Access
EX2	Mailbox, Client Access

Both servers are members of a database availability group (DAG). EX1 has the active copy of a database named Database1. Several users who have mailboxes in Database1 discover that all of their outbound email messages remain in their Drafts folder when they use Outlook Web App. You need to ensure that the email messages are delivered. What should you do?

- A. On EX2, retry the message queues.
- B. On EX1, start the Microsoft Exchange Mailbox Transport Submission service.
- C. On EX2, start the Microsoft Exchange Mailbox Transport Submission service.
- D. On EX1, retry the message queues.

Answer: B

NEW QUESTION 84

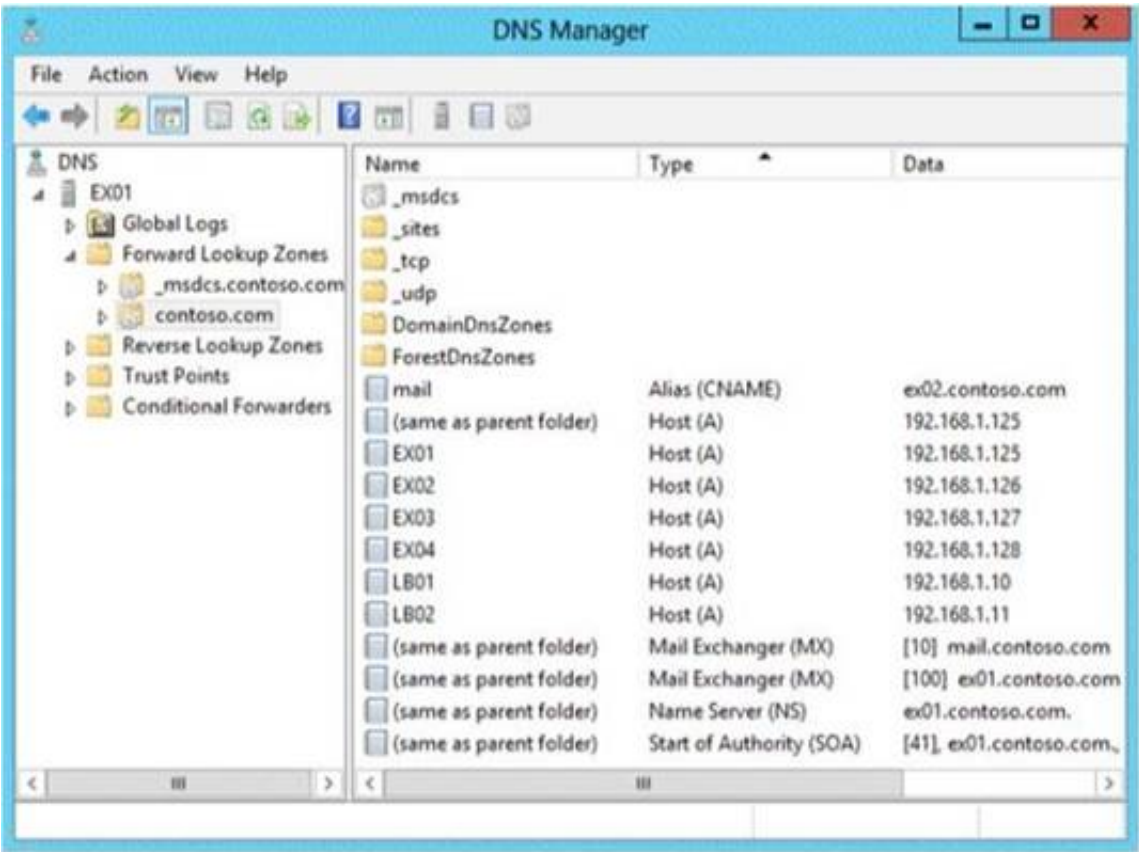
You host Exchange Server 2013 organizations for several hundred tenants. The infrastructure contains several custom transport agents. You need to prevent the transport agents from overloading the processors on one of the Exchange servers. Which cmdlet should you run?

- A. Set-WorkloadPolicy
- B. Set-ResourcePolicy
- C. Set-TransportAgent
- D. Set-ThrottlingPolicy

Answer: A

NEW QUESTION 87

Your company has an Exchange Server 2013 organization. All servers have the Client Access server role and the Mailbox server role installed. The DNS Manager is shown in the exhibit. (Click the Exhibit button.)



Use the drop-down menus to select the answer choice that completes each statement.

Answer Area

The server named [answer choice] receives all incoming email from the Internet.

To load balance the inbound SMTP communication between two Exchange servers, [answer choice]

Answer Area

The server named [answer choice] receives all incoming email from the Internet.

To load balance the inbound SMTP communication between two Exchange servers, [answer choice]

Answer:

Explanation: Answer Area

The server named [answer choice] receives all incoming email from the Internet.

To load balance the inbound SMTP communication between two Exchange servers, [answer choice]

NEW QUESTION 91

Your company has two data centers named Main1 and Main2. Each data center connects directly to the Internet and has a link to the other data center. All servers run Windows Server 2012 R2.

The network contains an Active Directory forest. Each data center is configured as an Active Directory site. You plan to deploy two Exchange Server 2013 servers to each data center. Each data center will host 500 user mailboxes for its respective users. All of the users will connect remotely to access their mailbox.

You need to recommend a deployment solution that meets the following requirements:

The users from both data centers must be able to access their mailbox if the link between the data centers fails.

The users from both data centers must be able to access their mailbox if a single server fails.

The solution must minimize manual intervention if a site fails.

What is the best recommendation to achieve the goal? More than one answer choice may achieve the goal. Select the BEST answer.

- A. two database availability groups (DAGs) that each contains one server from each data center
- B. one database availability group (DAG) that contains all of the servers
- C. two database availability groups (DAGs) that each contains all of the servers
- D. one database availability group (DAG) that contains all of the servers in Main1 and one DAG that contains all of the servers in Main2.

Answer: B

Explanation:

References:

[https://technet.microsoft.com/en-us/library/dd638129\(v=exchg.150\).aspx](https://technet.microsoft.com/en-us/library/dd638129(v=exchg.150).aspx)

NEW QUESTION 93

You have an Exchange Server 2013 organization that contains a database availability group (DAG) named DAG1. DAG1 contains two servers named EX01 and EX02.

On EX01, you have three networks. The networks are configured as shown in the following table.

Network name	Subnet	Connected to
DAG1\DAGNetwork01	192.168.1.0/24	Corporate LAN
DAG1\DAGNetwork02	10.0.0.0/24	EX02
DAG1\DAGNetwork03	10.1.0.0/24	iSCSI

You need to ensure that DAGNetwork02 is the primary replication network and DAGNetwork03 is configured for iSCSI traffic only.

What two commands should you run? (To answer, select the appropriate options in the answer area.)

Answer Area

<input type="text"/>	-Identity DAG1\DAGNetwork01	<input type="text"/>	<input type="text"/>
<input type="text"/>	-Identity DAG1\DAGNetwork03	<input type="text"/>	<input type="text"/>

Answer Area

<input type="text"/>	-Identity DAG1\DAGNetwork01	<input type="text"/>	<input type="text"/>
<input type="text"/>	-Identity DAG1\DAGNetwork03	<input type="text"/>	<input type="text"/>

Answer:

Explanation: **Answer Area**

<input type="text"/>	-Identity DAG1\DAGNetwork01	<input type="text"/>	<input type="text"/>
<input type="text"/>	-Identity DAG1\DAGNetwork03	<input type="text"/>	<input type="text"/>

NEW QUESTION 97

You have an Exchange Server 2013 organization that contains five servers.

All users connect to their mailbox by using a mobile device.

All of the users in the finance department are in an organizational unit (OU) named OU1.

You need to prevent the finance users from accessing the extended storage on their mobile device. What should you do?

- A. Create a new mobile device mailbox policy, and then run the Set-CasMailboxcmdlet.
- B. Create a new device access rule, and then run the Set-Mailbox cmdlet.
- C. Create a new mobile device mailbox policy, and then run the Set-Mailboxcmdlet.
- D. Create a new device access rule, and then run the Set-CasMailboxcmdlet.

Answer: A

NEW QUESTION 99

You have an Exchange Server 2013 organization that is configured to filter email messages for spam and malware.

You need to modify the schedule for applying updates to the anti-spam and the antimalware definitions. Which command should you run?

- A. Update-MalwareFilteringServer.ps1
- B. Set-MalwareFilteringServer
- C. Set-SenderFilterConfig
- D. Update-SafeList

Answer: B

NEW QUESTION 100

Your company has three offices. Each office is configured as an Active Directory site.

You have three servers that have Exchange Server 2013 installed named EX1, EX2 and EX3. All three servers have the Client Access server role and the Mailbox server role installed.

The Active Directory site links and costs are configured as shown in the exhibit. (Click the Exhibit button.)



Site B is designated as a hub site. EX2 fails.

You discover that all email messages sent from the users in Site A to the users in Site C are queued on a server in Site A.

You need to ensure that the email messages are sent to Site C as quickly as possible. What should you do first?

- A. Modify the Active Directory site link costs.
- B. Configure Site A as a hub site.
- C. Modify the Exchange-specific site link cost.
- D. Remove the hub site.

Answer: D

NEW QUESTION 101

You have an Exchange Server 2013 organization that contains two Edge Transport servers. The Edge Transport servers are configured to perform recipient filtering.

You deploy a new Edge Transport server named Edge3. You need to ensure that Edge3 performs recipient filtering. What should you do?

- A. Create a new Edge Subscription for Edge3.
- B. Run the Set-TransportConfig cmdlet on Edge3.
- C. Export the Edge Subscription from an existing Edge Transport server and import the Edge Subscription to Edge3.
- D. Run the ExportEdgeConfig.ps1 and the ImportEdgeConfig.ps1 scripts.

Answer: D

Explanation: We copy the configuration from an existing Edge Transport server with the ExportEdgeConfig.ps1 script and apply to new server Edge3 with ImportEdgeConfig.ps1 script.

Note: Configure Edge Transport server using cloned configuration

You can use the provided Exchange Management Shell scripts (located in %ExchangeInstallPath%Scripts) to duplicate the configuration of an Edge Transport server. This process is referred to as cloned configuration. Cloned configuration is the practice of deploying new Edge Transport servers based on configuration information from a previously configured source server. The configuration information from the previously configured source server is copied and exported to an XML file, which is then imported to the target server

NEW QUESTION 104

You have an exchange Server 2013 organization that contains one server. A user named User 1 report that he cannot view several email messages from his mobile device. He confirms that he can view the email messages by using Microsoft Outlook. You need to enable and view the Exchange ActiveSync log for User1.

Which two actions should you perform? (Each

Answer:

Explanation: References:

<https://support.microsoft.com/en-us/help/2461792/how-to-collect-activesync-device-logs-totroubleshoot-sync-issues-betw>

NEW QUESTION 109

A user fails to connect to his mailbox by using Outlook Anywhere. The user successfully connects to the mailbox by using an Exchange ActiveSync-enabled mobile device and Outlook Web App.

You need to identify what prevents the users from connecting to the mailbox by using Outlook Anywhere. Which tool should you use?

- A. Microsoft Outlook Connectivity Test
- B. Microsoft Exchange RPC Extractor
- C. Microsoft Exchange Server Profile Analyzer
- D. Exchange Server MAPI Editor

Answer: A

NEW QUESTION 110

You have an Exchange Server 2013 organization.

You plan to delegate the following administrative tasks:

- ? View the status of the message queue.
- ? Create, mount, and dismount databases.
- ? Restore mailboxes from a recovery database,
- ? Modify the settings of Exchange ActiveSync devices.

You need to identify which role group must be used to delegate each administrative task.

The solution must ensure that the role group that has the fewest administrative privileges is used.

Which role groups should you identify? (To answer, drag the appropriate role groups to the correct tasks. Each role group may be used once, more than once, or not at all. You may need to drag the split bar between panes or scroll to view content.)

Role Groups	Answer Area
Discovery Management	View the status of the message queue. Role group
Help Desk	Create, mount, and dismount databases. Role group
Organization Management	Restore mailboxes from a recovery database. Role group
Recipient Management	Modify the settings of Exchange ActiveSync devices. Role group
Server Management	
View-Only Organization Management	

Answer:

Explanation:

Role Groups	Answer Area
Discovery Management	View the status of the message queue. View-Only Organization Management
Help Desk	Create, mount, and dismount databases. Server Management
Organization Management	Restore mailboxes from a recovery database. Organization Management
Recipient Management	Modify the settings of Exchange ActiveSync devices. Recipient Management
Server Management	
View-Only Organization Management	

NEW QUESTION 115

You have an Exchange Server 2013 organization. Each user has an In-Place Archive.

You discover that several items in a user's In-Place Archive are corrupt. You need to ensure that the user can access the corrupt items. Which tool should you use?

- A. The Repair-FileIntegrity cmdlet
- B. The Isinteg command
- C. The New-MailboxRepairRequest cmdlet
- D. The Eseutil command

Answer: C

NEW QUESTION 116

Refer to Exhibit:

You create a mailbox named ConfRoom1 as shown in the exhibit. (Click the Exhibit button.)



Users report that when they schedule meetings and attempt to locate ConfRoom1 in the All Rooms address list, they do not see ConfRoom1 on the list. You need to ensure that the users can locate ConfRoom1 on the All Rooms address list. What should you do?

- A. Run the Set-Mailbox command and specify the Type parameter.
- B. Modify the offline address book (OAB) generation schedule.
- C. Run the New-AddressList command and specify the -RecipientFilter parameter.
- D. Run the New-AddressList command.
- E. Modify the Sharing Policy that is associated to ConfRoom1.

Answer: D

NEW QUESTION 120

You have an Exchange Server 2013 organization.

You deploy an anti-spam appliance and you connect the appliance to the Exchange Server organization. You need to disable keyword filtering of email messages that are received from the Internet.

Which Windows PowerShell cmdlet should you use?

- A. Set-SendConnector
- B. Remove-DeliveryAgentConnector
- C. Set-ContentConfig

D. Disable-Service

Answer: B

Explanation: References: [https://technet.microsoft.com/en-us/library/dd297929\(v=exchg.160\).aspx](https://technet.microsoft.com/en-us/library/dd297929(v=exchg.160).aspx)

NEW QUESTION 124

You have an Exchange Server 2013 organization.
 Your company has a Service Level Agreement (SLA) stating that you must be able to reconnect disconnected mailboxes to user accounts for up to 365 days. After 365 days, disconnected mailboxes must be deleted permanently.
 You need to recommend a solution to meet the SLA. What should you include in the recommendation?

- A. Create a retention policy and apply the policy to all mailboxes.
- B. Configure the deleted mailbox retention setting for all databases.
- C. Configure the deleted item retention setting for all databases.
- D. Implement a database availability group (DAG) that contains a lagged copy.

Answer: B

NEW QUESTION 129

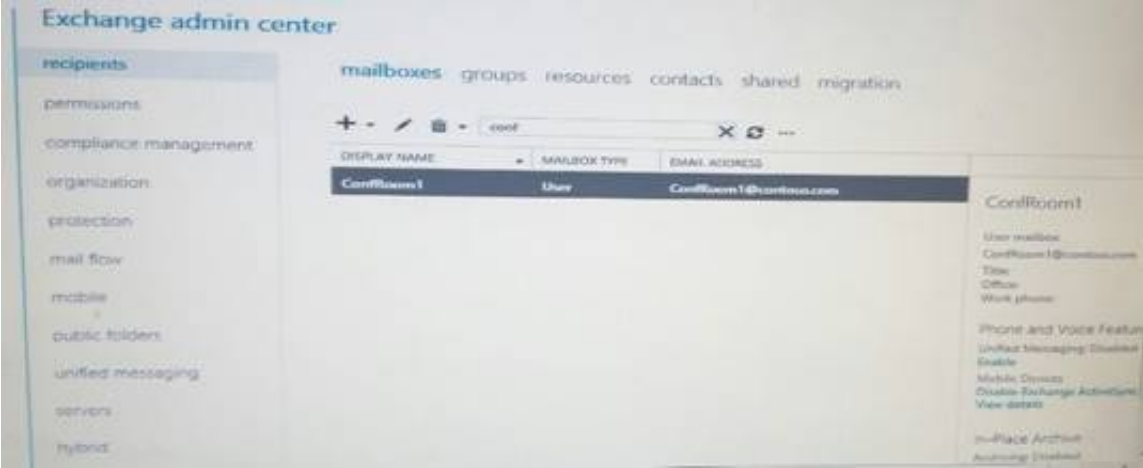
You have an Exchange Server 2013 organization that contains one server named ex1.contoso.com. The server has the Mailbox server role and the Client Access server role installed.
 You plan to configure users to work from home and to access their email by using the Outlook Anywhere feature.
 Upon testing the planned configuration, you discover that the users can connect and synchronize email from home, but they cannot execute the following tasks:
 Set automatic replies for Out of Office.
 Download changes to the offline address book.
 View availability data when scheduling meetings with coworkers.
 The users can execute these tasks when they work from the office.
 You need to ensure that the users can execute the tasks when they work from home.
 Which two actions should you perform? (Each correct answer presents part of the solution. Choose two.)

- A. Install a new certificate on ex1.contoso.com
- B. Modify the EWS virtual directory.
- C. Create a new Autodiscover virtual directory.
- D. Renew the certificate on ex1.contoso.com.
- E. Modify the OAB virtual directory.

Answer: BE

NEW QUESTION 134

You create a mailbox named ConfRoom1 as shown in the exhibit. (Click the Exhibit button.)



Users report that when they schedule meetings and attempt to locate ConfRoom1 in the All Rooms address list, they do not see ConfRoom1 on the list. You need to ensure that the users can locate ConfRoom1 on the All Rooms address list. What should you do?

- A. Modify the Sharing Policy that is associated to ConfRoom1.
- B. Run the Update-AddressList command and specify the -Identity parameter.
- C. Run the Set-Mailbox command and specify the -IsRootPublicFolderMailbox parameter.
- D. Delete the ConfRoom1 mailbox, and create a new resource mailbox.

Answer: D

NEW QUESTION 135

Your company has two offices. The offices are configured as shown in the following table.

Office name	Number of users	Office site name
Office 1	2,000	Site 1
Office 2	2,000	Site 2

The offices connect to each other by using a WAN link that has a latency of more than 700 ms. You plan to deploy an Exchange Server 2013 organization to meet the following requirements:

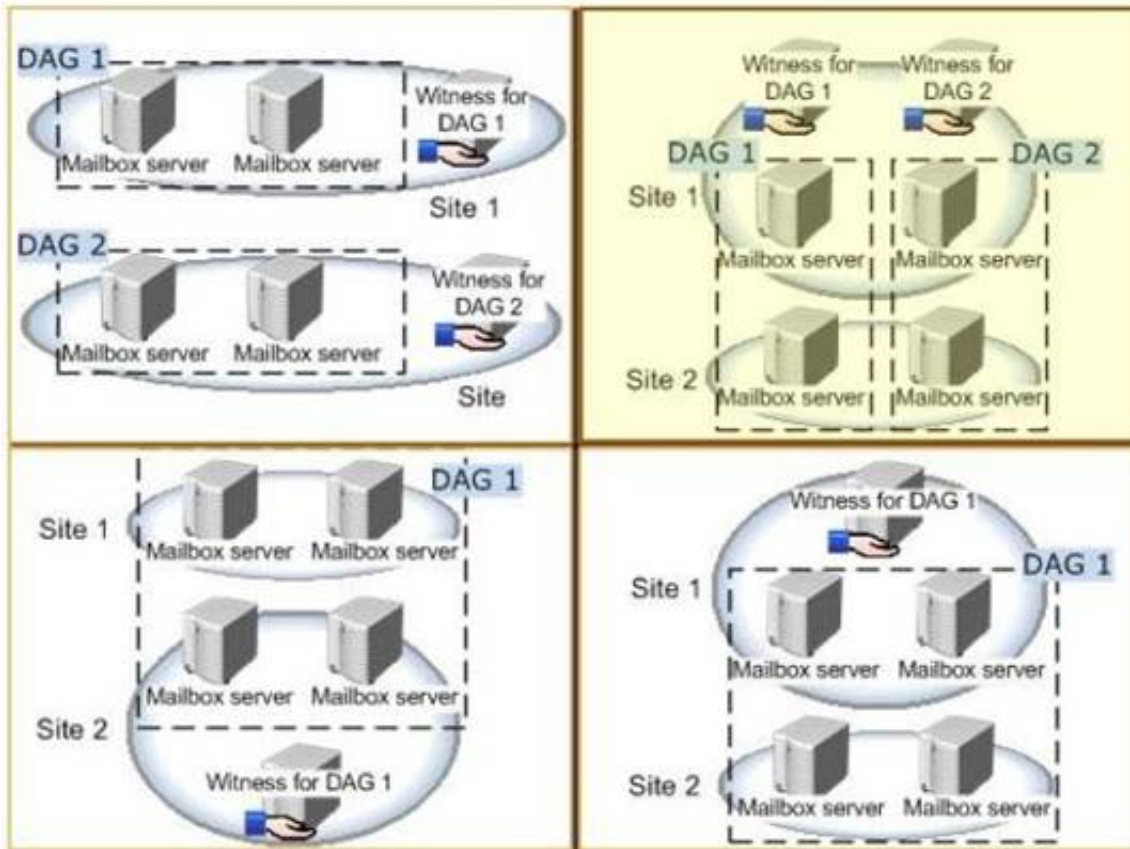
- Ensure that users can access their mailbox if the WAN link fails.
- Ensure that users can access their mailbox if a single server fails.
- Ensure that users can access their mailbox if a single database fails.

You recommend deploying one or more database availability groups (DAGs) and mailbox database copies. You need to identify which design meets the

requirements for the planned deployment.

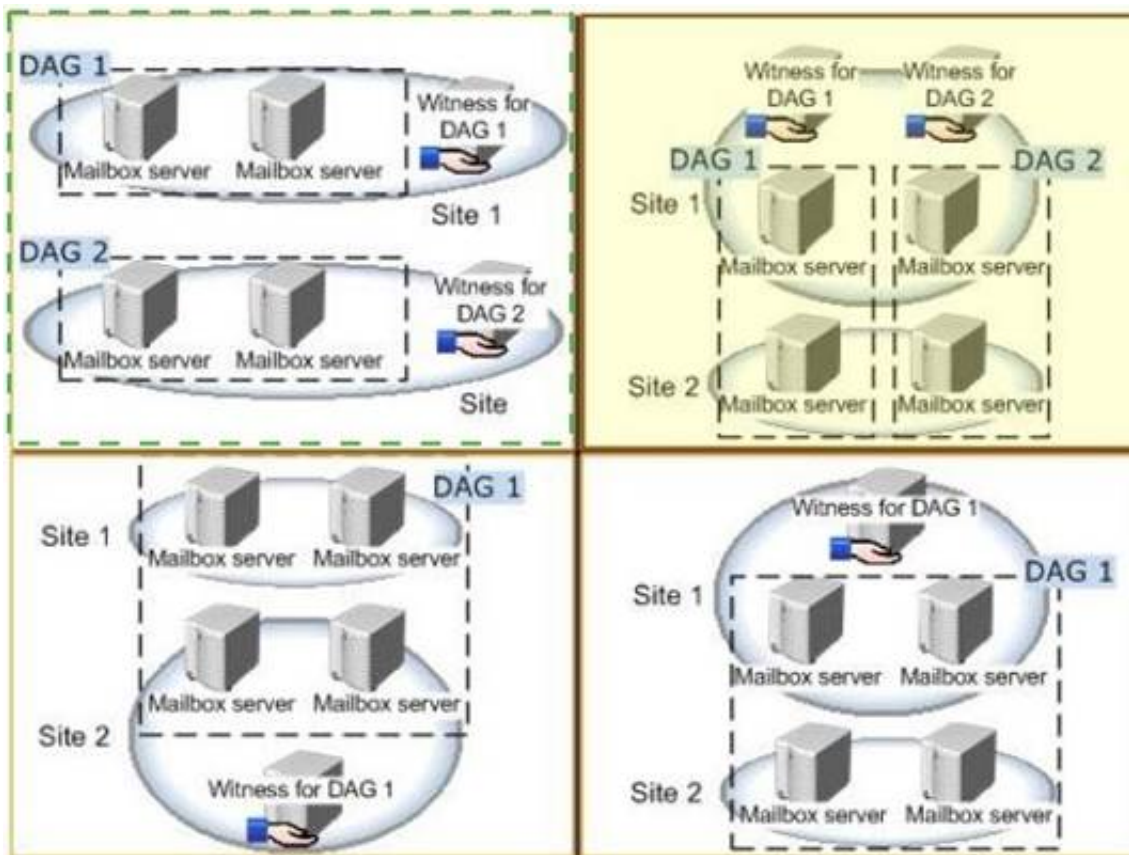
Which design should you identify?

To answer, select the appropriate design in the answer area.



Answer:

Explanation:



NEW QUESTION 140

You have an Exchange Server 2013 organization named Contoso. The organization contains a server named Server1 that has Exchange Server 2013 installed. Server1 has the Mailbox server role and the Client Access server role installed.

Server1 has a Send connector for a partner company. The Send connector is configured for Domain Security with a domain named adatum.com.

The only certificate installed on Server1 expires.

You discover that all email messages sent to adatum.com remain in the queue on Server1. On Server1, you install a new certificate from a trusted third-party.

You need to ensure that the email messages are delivered to adatum.com. What should you do?

- A. Assign the new certificate to the IIS service.
- B. Send the new certificate to the administrator at adatum.com.
- C. Assign the new certificate to the SMTP service.
- D. Create a new send connector that contains an address space to adatum.com.

Answer: C

NEW QUESTION 145

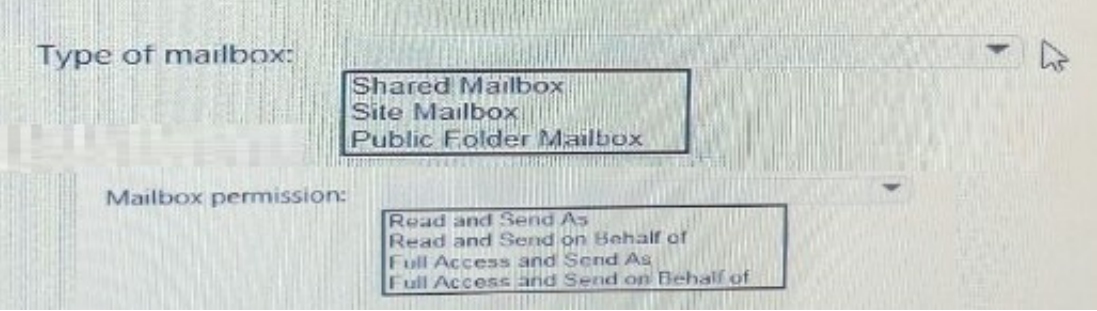
You have an Exchange Server 2013 organization and a Microsoft Office 365 tenant that are configured for hybrid coexistence. Eight hundred users have mailboxes in the Exchange Server 2013 organization. Six hundred users have mailboxes in Office 365.

You need to implement a mailbox solution for the support department. The solution must meet the following requirements:

All users must be able to send email messages to a dedicated mailbox for support.

All of the users from the support department must be able to log on to the dedicated support mailbox and read the email messages in the mailbox.

All of the users from the support department must be able to reply to the email messages sent to the dedicated support mailbox.



Answer:

Explanation: References:
<https://ette.zendesk.com/hc/en-us/articles/215481528-Understanding-Shared-Mailboxes-vs-Standard-Mailboxes->

NEW QUESTION 147

Your company has offices in Miami, Singapore and Montreal. An Active Directory site exists for each office. You have an Exchange Server 2013 organization that contains a server in each site. Each server has the Mailbox server role and the Client Access Server role installed. All users connect to the Miami servers to retrieve the public folder hierarchy. You need to create several public folders on the server in the Singapore office to meet the following requirements:
 Ensure that the public folders are available if a single Mailbox server fails.
 Ensure that the users in the Singapore office connect to their local server to retrieve the public folder hierarchy.
 Which actions should you perform? (Each correct answer presents part of the solution. Choose all that apply.)

- A. Create a new public folder mailbox.
- B. Create a new public folder database.
- C. Run the Add-MailboxDatabaseCopy cmdlet.
- D. For each mailbox in the Singapore office, run the Set-Mailbox cmdlet and specify the –defaultpublicfoldermailbox parameter.
- E. Run the Set-PublicFolderDatabase cmdlet.
- F. For each public folder mailbox, run the Set-Mailbox cmdlet and specify the –defaultpublicfoldermailbox parameter.

Answer: ACD

NEW QUESTION 150

You have an Exchange Server 2013 organization that contains two Mailbox servers and two Client Access servers. You have a database availability group (DAG) that contains both Mailbox servers. You need to deploy public folders. What should you do first?

- A. Run the New-PublicFolderDatabase cmdlet and specify the -Server parameter.
- B. Run the New-PublicFolder cmdlet and specify the -Path parameter.
- C. Run the New-Mailbox cmdlet and specify the -Publicfolder parameter.
- D. Run the New-MailboxDatabase cmdlet and specify the -PublicFotderDatabase parameter.

Answer: C

NEW QUESTION 155

You are migrating an existing Exchange Server 2007 organization to Exchange Server 2013. You expect the migration to last several weeks. The servers in the organization are configured as shown in the following table.

Server name	Active Directory site name	Server role	Exchange Server version
EX1	Main	Mailbox server Client Access server Hub Transport server	Exchange Server 2007
EX2	Main	Mailbox server	Exchange Server 2013
EX3	Main	Mailbox server	Exchange Server 2013
EX4	Main	Client Access server	Exchange Server 2013
EX5	Main	Client Access server	Exchange Server 2013

Users who have mailboxes on all of the servers will access Outlook Anywhere by using the mail.contoso.com name. You need to recommend which servers must be associated to the autodiscover.contoso.com and mail.contoso.com names. Which servers should you identify for each name?
 To answer, drag the appropriate servers to the correct name in the answer area. Each server may be used once, more than once, or not at all. Additionally, you may need to drag the split bar between panes or scroll to view content.



Answer:



NEW QUESTION 159

You plan to deploy an Exchange Server 2013 organization.
You need to recommend a solution to ensure that a user named User1 can access email messages by using Exchange ActiveSync on an Android device.
The solution must prevent all other users from using Android devices to access email by using Exchange ActiveSync.
What should you recommend doing first?

- A. Run the Set-CasMailbox cmdlet.
- B. Create a device access rule.
- C. Modify the Quarantine Notification settings.
- D. Create a mobile device mailbox policy.

Answer: B

NEW QUESTION 160

Fabrikam, Ltd. has an Exchange Server organization that contains two servers. The servers are configured as shown in the following table.

Server name	Role	Exchange Server version	Site location
EX1	Mailbox server Client Access server Hub Transport server	Exchange Server 2010	New York
EX2	Mailbox server Client Access server	Exchange Server 2013	New York

Recently, the internal and external namespaces named mail.fabrikam.com and autodiscover.fabrikam.com were changed to point to EX2.
You configure all of the users on EX2 to access their mailbox by using Microsoft Outlook from the Internet.
You enable Outlook Anywhere on EX1.
You need to ensure that users who have mailboxes on EX1 can connect to their mailbox from the Internet. What should you do on EX1?

- A. Set the ExternalHostName value to NULL.
- B. Set the ExternalClientAuthenticationMethod value to Basic and NTLM.
- C. Set the IISAuthenticationMethods value to Basic and NTLM.
- D. Set the InternalHostName value to NULL

Answer: C

NEW QUESTION 162

You have an Exchange Server 2013 organization that contains mailboxes for multiple companies. You need to segment the address lists in the organization per company.
What should you assign to the users of each company?

- A. Address book policies (ABPs)
- B. Address lists
- C. Global Address Lists (GALs)
- D. Email address policies

Answer: A

NEW QUESTION 165

You have an Exchange Server 2013 organization.
You plan to assign the default workload management policy to all of the servers in the organization.
You need to remove the Calendar Synchronization Assistant workload from the workload management policy before you assign the policy to the servers.
Which cmdlet should you run?

- A. Remove-ResourcePolicy
- B. Set-ResourcePolicy
- C. Set-WorkloadPolicy
- D. Remove-WorkloadPolicy

Answer: D

NEW QUESTION 169

You have an Exchange Server 2013 organization that contains a server named Server1.
Server1 has an IP address of 10.1.100.16 and is configured to use a default gateway of 10.1.100.1. You deploy a hardware load balancer that is configured to use the IP addresses of 192.168.101.31 and 10.1.100.31.
A user named User1 has a client computer that has an IP address of 102.168.101.201. User1 reports that he cannot view his mailbox by using Outlook Web App.
When you review the IIS logs on Server1, you discover the following information:
#Fields: date time cs-method cs-uri-stem s-port c-ipcs(Referer) sc-status2013-01-09 00:08:55 POST /owa/ev.owa2 443 192.168.101.201 https://owa.fabrikam.com/owa/ 200
You need to ensure that User1 can access his mailbox successfully from Outlook Web App.
What are two possible ways to achieve this goal? (Each correct answer presents a complete solution. Choose two.)

- A. Configure the hardware load balancer to use the same certificate as the certificate used on Server1.
- B. Configure the hardware load balancer to use source NAT (SNAT).
- C. Configure the computer of User1 to ignore response headers.
- D. Modify the default gateway of Server1.

Answer: BD

NEW QUESTION 174

You have an Exchange Server 2013 organization that contains three servers. The servers are configured as shown in the following table.

Server name	Role(s)	Configuration
EX01	Mailbox server Client Access server	OAB generation server Expansion server for DL1
EX02	Client Access server	Not applicable
EX03	Mailbox server	Not applicable

All inbound email messages from the Internet are routed through EX01. You plan to remove EX01 from the organization.
You need to ensure that all of the functionalities of EX01 are transferred to EX02 and EX03. The solution must minimize administrative effort.
Which functionality should you transfer to each server? (To answer, select the appropriate server for each functionality in the answer area.)

Answer Area

OAB generation server:

Expansion server for DL1:

Inbound SMTP server from the Internet:

Answer Area

OAB generation server:

EX02

EX03

Expansion server for DL1:

EX02

EX03

Inbound SMTP server from the Internet:

EX02

EX03

Answer:

Explanation:

Answer Area

OAB generation server:

EX02

EX03

Expansion server for DL1:

EX02

EX03

Inbound SMTP server from the Internet:

EX02

EX03

NEW QUESTION 177

You have an Exchange Server 2013 organization that contains a database availability group (DAG) named DAG1. The organization contains three servers. The servers are configured as shown in the following table.

Server name	Role
EX1	Mailbox server
EX2	Mailbox server
EX3	Client Access server

EX1 and EX2 are members of DAG1. EX1 has an active copy of a database named DB1 and a passive copy of a database named DB2. EX2 has a passive copy of DB1 and an active copy of DB2.

You plan to create a public folder named Invoices.

You need to ensure that users can access the Invoices public folder if one of the DAG members fails. The solution must ensure that the users can send email messages to the Invoices public folder.

Which three actions should you perform in sequence? (To answer, move the appropriate three actions from the list of actions to the answer area and arrange them in the correct order.)

Actions

Add an email address for the public folder mailbox.

Create a public folder mailbox.

Mail-enable the public folder.

Update the public folder hierarchy.

Create a public folder.

Answer Area

Answer:

Explanation:

Actions

Add an email address for the public folder mailbox.

Create a public folder mailbox.

Mail-enable the public folder.

Update the public folder hierarchy.

Create a public folder.

Answer Area

Create a public folder mailbox.

Mail-enable the public folder.

Create a public folder.

NEW QUESTION 180

You have an Exchange Server organization that contains five servers.

Users who have their mailbox on a server named EX1 report that they fail to receive email messages.

You verify that the email messages sent to the mailboxes on EX1 are delivered successfully to the server. You also verify that all of the mailbox databases on EX1 are mounted.

You discover that the hard disk drive on EX1 has only 10 GB of free space. You delete 20 GB of unnecessary data on EX1.

Users report that now they are receiving all of their email messages successfully to their mailbox.

You need to ensure that EX1 will prevent the delivery of email messages to mailboxes only if less than 2 GB of hard disk space is available.

What should you do?

- A. Modify the Organization transport settings.
- B. Modify the mailbox database settings.
- C. Modify the EdgeTransport.exe.config file.

D. Disable the Safety Net feature.

Answer: C

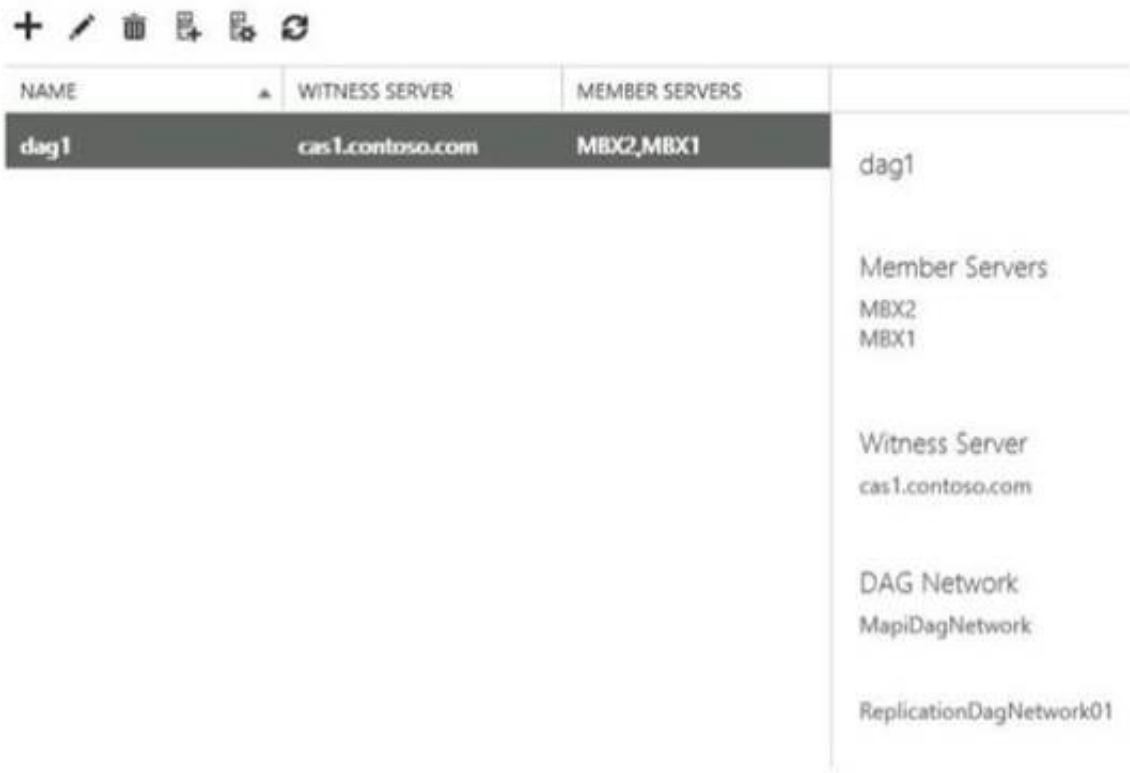
Explanation:

References:

[https://technet.microsoft.com/en-us/library/bb201658\(v=exchg.160\).aspx#File](https://technet.microsoft.com/en-us/library/bb201658(v=exchg.160).aspx#File)

NEW QUESTION 185

You have an Exchange Server 2013 organization that contains two Mailbox servers named MBX1 and MBX2. You create a database availability group (DAG) named DAG1. DAG1 is configured as shown in the exhibit. (Click the Exhibit button.)



You need to ensure that replication only occurs over the replication network. Which two commands should you run? (Each correct answer presents part of the solution. Choose two.)

- A. Set-DatabaseAvailabilityGroupNetwork ReplicationDagNetwork01 -ReplicationEnabled \$true
- B. Set-DatabaseAvailabilityGroupNetworkMapiDagNetwork -ReplicationEnabled \$false
- C. Set-DatabaseAvailabilityGroup Dag1 -ManualDagNetworkConfiguration \$true
- D. Set-DatabaseAvailabilityGroup Dag1 -ManualDagNetworkConfiguration \$false

Answer: BC

NEW QUESTION 187

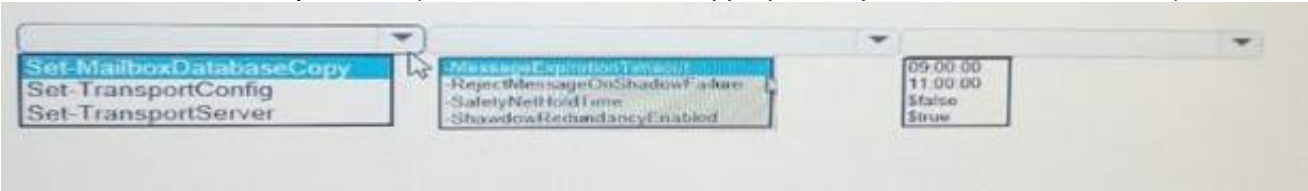
You have an Exchange Server 2013 organization that contains a database availability group (DAG) named DAG1. DAG1 has two members. You create a mailbox database copy for each database on each DAG member. You plan to implement a service level agreement (SLA) that meets the following requirements: All deleted mailboxes must be recoverable for up to six months after they are deleted. When a mailbox is recovered, the entire contents of the mailbox must be recovered. You need to recommend a solution that meets the requirements. What should you recommend?

- A. Get-Mailbox | Set-Mailbox -RetainDeletedItemsFor 180.00:00:00
- B. Get-MailboxDatabase | Set-MailboxDatabase -MailboxRetention 180.00:00:00
- C. Get-MailboxDatabase | Set-MailboxDatabase -DeletedItemRetention 180.00:00:00
- D. Get-Mailbox | Set-Mailbox -Audit Log Age Limit 180.00:00:00

Answer: B

NEW QUESTION 188

You have an Exchange Server 2013 organization that contains several servers. The organization also has two database availability group (DAGs). You deploy a lagged copy of a mailbox database copy and you set the replay lag time to 10 days. You need to modify the Exchange Server organization to minimize the likelihood that an email message will be lost if a DAG member fails. What command should you run? (To answer, select the appropriate options in the answer area).



Answer:

Explanation: References: [https://technet.microsoft.com/en-us/library/bb124151\(v=exchg.160\).aspx](https://technet.microsoft.com/en-us/library/bb124151(v=exchg.160).aspx)

NEW QUESTION 192

You have an Exchange Server 2013 organization.
 You have a user named User1 and a user named User2. Both users access their email by using Microsoft Outlook 2013.
 You need to ensure that User2 can access all of the email messages in the mailbox of User1 the next time User2 opens Outlook.
 What command should you run? (To answer, select the appropriate options in the answer area.)

Answer Area

Answer Area

Add-ADPermission
Add-MailboxPermission

-Identity User1
-Identity User2

-User User1
-User User2

-AccessRights AutoMapMailbox
-AccessRights ExtendedRight –ExtendedRights “Send As”
-AccessRights FullAccess

Answer:

Explanation:

Answer Area

Add-ADPermission
Add-MailboxPermission

-Identity User1
-Identity User2

-User User1
-User User2

-AccessRights AutoMapMailbox
-AccessRights ExtendedRight –ExtendedRights “Send As”
-AccessRights FullAccess

NEW QUESTION 193

You have an Exchange Server 2013 organization.
 You need to ensure that users receive a notification if the delivery of a message is delayed for more than one hour.
 Which cmdlet should you use?

- A. Set-FrontEndTransportService
- B. Set-MailboxTransportService
- C. Set-TransportConfig
- D. Set-TransportService

Answer: D

NEW QUESTION 195

Your network contains an internal network and a perimeter network.
 You have an Exchange Server 2010 organization that contains an Edge Transport server named EX3.
 You plan to upgrade the organization to Exchange Server 2013. You plan to replace EX3 and its functionalities with a new server named EX6 that has Exchange Server 2013 installed.
 EX6 will be used to send all email messages to and receive all email messages from the Internet and to filter spam.
 You need to recommend which steps are required to install EX6. EX6 must have the least number of Exchange Server roles installed.
 Which three actions should you recommend performing on EX6 in sequence? (To answer, move the appropriate three actions from the list of actions to the answer area and arrange them in the correct order.)

Actions	Answer Area
Run the Restart-Service MSExchangeSubmission command.	
Install the Edge Transport server role.	
Run the Install-AntispamAgents.ps1 script.	
Install the Client Access server role.	
Run the Restart-Service MSExchangeTransport command.	
Run the Update-MalwareFilteringServer.ps1 script.	
Install the Mailbox server role.	

Answer:

Explanation:

Actions

Run the **Restart-Service MSExchangeSubmission** command.

Install the Edge Transport server role.

Run the **Install-AntispamAgents.ps1** script.

Install the Client Access server role.

Run the **Restart-Service MSExchangeTransport** command.

Run the **Update-MalwareFilteringServer.ps1** script.

Install the Mailbox server role.

Answer Area

Install the Mailbox server role.

Run the **Install-AntispamAgents.ps1** script.

Run the **Restart-Service MSExchangeTransport** command.

NEW QUESTION 200

You have an Exchange Server 2013 organization that contains three Client Access servers named EX1, EX2, and EX3. The organization also contains eight Mailbox servers.

All users have client computers that have Microsoft Outlook 2013 installed.

You create a Network Load Balancing (NLB) cluster and add all of the Client Access servers as hosts in the cluster. The cluster has the following configurations:

The default host is set to EX1.

A port rule is configured for HTTPS traffic.

The port rule has the affinity parameter set to Single.

The port rule has the filtering mode set to Single host.

The port rule has the Handling priority set to the default option. You discover that Outlook always connects to EX1.

You need to ensure that client connections are handled by all three Client Access servers. What should you modify?

- A. The affinity parameter of the port rule.
- B. The filtering mode of the port rule.
- C. The default host of the cluster.
- D. The handling priority of the port rule.

Answer: B

Explanation: References:

[https://technet.microsoft.com/en-us/library/cc778263\(v=ws.10\).aspx](https://technet.microsoft.com/en-us/library/cc778263(v=ws.10).aspx)

NEW QUESTION 205

Your company has two main offices named Main1 and Main2. Each office has a data center.

You have an Exchange Server 2013 organization. Each data center contains several Exchange servers and connects directly to the Internet Each office has a Send connector to the Internet.

You configure each office as a separate site and you configure Main1 as a hub site. The company opens a branch office that contains a small data center.

You deploy an Exchange Server 2013 server to the data center. The data center has a direct network link to Main1

Scenario	Through Main1	Through Main2
A user in the branch office sends an email message to a recipient in Main1.	<input type="radio"/>	<input type="radio"/>
A user in the branch office sends an email message to the Internet	<input type="radio"/>	<input type="radio"/>
A user in the branch office sends an email message to a recipient in Main2	<input type="radio"/>	<input type="radio"/>

Answer:

Explanation:

Scenario	Through Main1	Through Main2
A user in the branch office sends an email message to a recipient in Main1.	<input checked="" type="radio"/>	<input type="radio"/>
A user in the branch office sends an email message to the Internet	<input checked="" type="radio"/>	<input type="radio"/>
A user in the branch office sends an email message to a recipient in Main2	<input type="radio"/>	<input type="radio"/>

NEW QUESTION 209

Your company has five main offices. Each office contains a data center.

You plan to deploy an Active Directory forest and an Exchange Server 2013 organization. Each office will be configured as a separate Active Directory site. User mailboxes will be hosted in each site.

You need to recommend an Exchange Server 2013 deployment strategy that meets the following requirements:

Provides redundancy for all mailbox databases

Creates a temporary copy of outbound email messages

Minimizes the number of servers deployed to the network

Provides redundancy for client access by using Network Load Balancing (NLB) What should you recommend?

A. In each site, deploy one server that has both the Mailbox server role and the Client Access server role installed and another server that has the Client Access server role installed.

B. In each site, deploy one server that has the Mailbox server role installed and two servers that have the Client Access server role installed.

C. In each site, deploy one server that has both the Mailbox server role and the Client Access server role installed.

D. In each site, deploy two servers that have both the Mailbox server role and the Client Access server role installed.

Answer: B

Explanation: WNLB can't be used on Exchange servers where mailbox DAGs are also being used because WNLB is incompatible with Windows failover clustering. If you're using an Exchange 2013 DAG and you want to use WNLB, you need to have the Client Access server role and the Mailbox server role running on separate servers.

References:

[https://technet.microsoft.com/en-us/library/jj898588\(v=exchg.150\).aspx](https://technet.microsoft.com/en-us/library/jj898588(v=exchg.150).aspx)

NEW QUESTION 211

You have an Exchange Server 2007 organization.

You are migrating the organization to Exchange Server 2013. The migration will last eight weeks. All servers are in a site named Site1.

The servers in the organization are configured as shown in the following table.

Server name	Active Directory site name	Server role	Exchange Server version
EX1	Main	Mailbox server Client Access server Hub Transport server	Exchange Server 2007
EX2	Main	Mailbox server	Exchange Server 2013
EX3	Main	Mailbox server	Exchange Server 2013
EX4	Main	Client Access server	Exchange Server 2013
EX5	Main	Client Access server	Exchange Server 2013

Users who have mailboxes on all of the servers will access Outlook Anywhere by using the mail.adatum.com name.

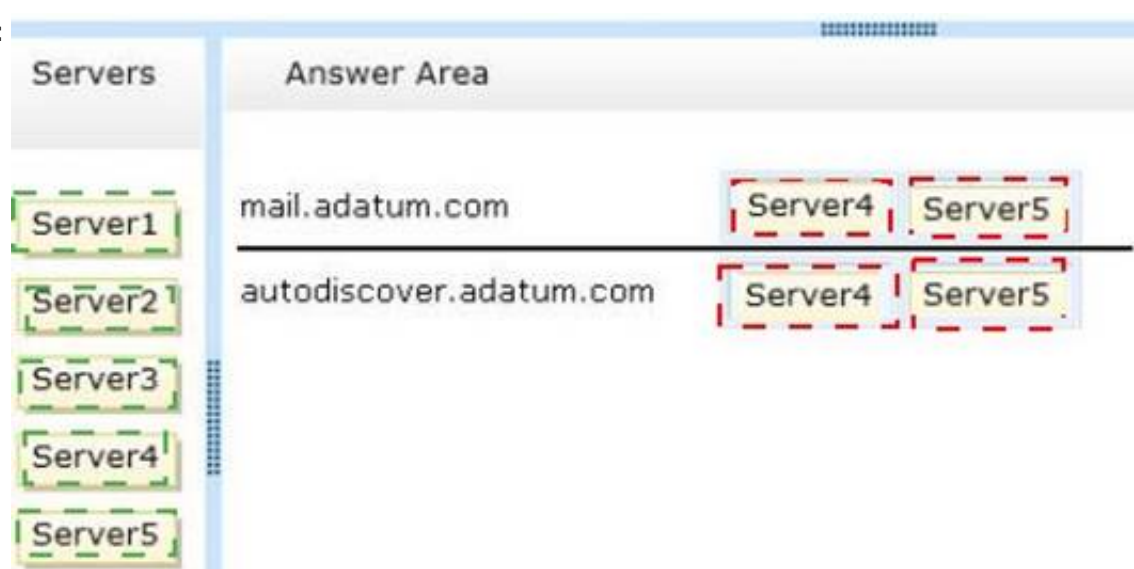
You need to recommend which servers must be associated to the autodiscover.adatum.com and mail.adatum.com names.

Which servers should you identify for each name? (To answer, drag the appropriate servers to the correct names. Each server may be used once, more than once, or not at all. You may need to drag the split bar between panes or scroll to view content.)



Answer:

Explanation:



NEW QUESTION 213

You have an Exchange Server 2013 organization.

A new policy requires that all iPhone users access their on-premises mailbox by using the OWA for iPhone app.

You need to ensure that push notifications for the OWA for iPhone app are configured before the users install the app.

Which three actions should you perform? Each correct answer presents part of the solution.

- A. Configure Microsoft Azure Active Directory Sync (Azure AD Sync).
- B. Modify the EWS virtual directory.
- C. Enable push notifications proxy.
- D. Enroll in Microsoft Office 365 for business.
- E. Modify the OWA virtual directory.
- F. Set up on premises Exchange 2013 to Office 365 Authentication.

Answer: CDF

Explanation: Configuring push notifications proxying for OWA for DevicesTo enable push notifications, the admin must:1.

(D) Enroll your organization in Office 365 for business.2. Update all on-premises servers to Exchange Server

2013 Cumulative Update 3 (CU3) or later.3. (F) Set up On-premises Exchange 2013 to Office 365 Authentication4. (C) Enable push notifications from the on-premises Exchange Server 2013 to Office 365 and verify that push notifications are working.Illustration below:

NEW QUESTION 217

Your network contains two Active Directory forests named contoso.com and fabrikam.com. Contoso.com is configured as a user forest. Fabrikam.com is configured as a resource forest.

You deploy an Exchange Server 2013 organization.

You need to recommend a solution to provide five administrators in contoso.com with the ability to manage the Exchange Server resources by using role-based administration.

What should you recommend creating?

- A. a new management role group in fabrikam.com and a new universal security group in contoso.com
- B. a linked role group and a universal security group in contoso.com and linked mailboxes in fabrikam.com
- C. a linked role group in fabrikam.com and a universal security group in contoso.com
- D. linked mailboxes and a role group in fabrikam.com

Answer: C

Explanation: References:

[https://technet.microsoft.com/en-us/library/dd638105\(v=exchg.150\).aspx#Linked](https://technet.microsoft.com/en-us/library/dd638105(v=exchg.150).aspx#Linked)

NEW QUESTION 222

You have an Exchange Server 2013 organization.

All users connect to their mailbox by using a mobile device.

You need to ensure that an event is written to the application log when a user attempts to connect to the organization by using a second mobile device.

What command should you run? To answer, select the appropriate options in the answer area.

Answer Area

<div>Set-Mailbox</div> <div>Set-ServerMonitor</div> <div>Set-ThrottlingPolicy</div> <div>Set-ThrottlingPolicyAssociation</div>	-name MultipleDevices	<div>-AnonymousMaxConcurrency 1</div> <div>-EasCutoffBalance 1</div> <div>-EasMaxConcurrency 1</div> <div>-EasMaxDevices 1</div>	<div>-PushNotificationSamplingPeriodPerDevice \$true</div> <div>-ThrottlingPolicyScope Organization</div> <div>-ThrottlingPolicyScope Regular</div>
--	-----------------------	--	---

Answer:

Explanation: References:

[https://technet.microsoft.com/en-us/library/dd298094\(v=exchg.160\).aspx](https://technet.microsoft.com/en-us/library/dd298094(v=exchg.160).aspx)

NEW QUESTION 226

You have an internal network and a perimeter network. On the perimeter network, you deploy two Exchange Server 2013 servers that have the Edge Transport server role installed. On the internal network, you deploy five Exchange Servers that have the Mailbox server role and the Client Access server role installed.

You need to recommend a solution to ensure that email messages are received by the organization if the Edge Transport server fails. The solution must ensure that the server are load balanced.

What is the best recommendation to achieve the goal? More than one answer choice may achieve the goal. Select the BEST answer.

- A. For each Edge Transport server, create a host (A) record
- B. Create mail exchanger (MX) records that point to the A record
- C. Set the preference of both MX records to a value of 100.
- D. Create a mail exchanger (MX) record that points to the IP address of each Edge Transport serve
- E. Set the preference of both MX records to a value of 10.
- F. For each Edge Transport server, create a host (A) record
- G. Create mail exchanger (MX) records that point to the A record
- H. Set the preference of one of the MX records to a value of 11. Set preference of the other MX record to a value of 12.

- I. Create a host (A) record named amil.contoso.com that contains the IP addresses for both Edge Transport server
- J. Create a mail exchanger (MX) record that points to mail.contoso.com.

Answer: A

NEW QUESTION 227

You are evaluating the implementation of a Database Availability Group (DAG).
 You need to recommend changes to the planned implementation to minimize the loss of large email messages if a single DAG member fails.
 What should you recommend changing?

- A. The preference of the mail exchanger (MX) records
- B. The duration of single item recovery
- C. The intervals of shadow redundancy
- D. The size of the transport dumpster

Answer: C

NEW QUESTION 229

You have an Exchange Server 2013 organization.
 Users connect to their mailbox by using Microsoft Outlook 2013 and mobile devices. A user named User1 loses a mobile device.
 You need to wipe the mobile device remotely. Which cmdlet should you use?

- A. Remove-MobileDevice
- B. Clear-MobileDevice
- C. Set-Mailbox
- D. Remove-ActiveSyncDevice

Answer: B

NEW QUESTION 231

You plan to deploy an Exchange Server 2013 organization. The organization will contain the servers configured as shown in the following table.

Server name	Role	Network
Server1	Client Access, Mailbox	Internal
Server2	Client Access, Mailbox	Internal
Server3	Client Access, Mailbox	Internal

Server1, Server2, and Server3 will be members of a database availability group (DAG) named DAG1. You deploy a firewall between the internal network and the Internet.

You need to recommend a solution to meet the following requirements:

- Ensure that users can access their mailbox from the Internet by using Microsoft Outlook if a server fails.
- Ensure that users can access Unified Messaging (UM) services from the Internet if a server fails.
- Minimize costs.

What should you recommend? To answer, select the appropriate options in the answer area.

Answer area

Firewall ports to open:

▼

80 and 443
80, 5060, and 5061
443, 5060, and 5061
443, 5062, and 5063
5060, 5061, and 5062

Load balancing strategy:

▼

DNS round robin
Hardware load balancer
Network Load Balancing (NLB) cluster

Answer:

Explanation: References: <https://practical365.com/exchange-server/exchange-2013-client-access-server-high-availability/>

NEW QUESTION 232

Your company has five main offices. Each office contains a data center.
 You plan to deploy an Active Directory forest and an Exchange Server 2013 organization. Each office will be configured as a separate Active Directory site.
 You need to recommend an Exchange Server 2013 deployment strategy that meets the following requirements:
 Replicates user mailboxes across multiple servers
 Creates a temporary copy of outbound email messages
 Minimizes the number of servers deployed to the network
 What should you recommend?

- A. In each site, deploy one server that has both the Mailbox server role and the Client Access server role installed.
- B. In each site, deploy two servers that have the Mailbox server role installed and two servers that have the Client Access server role installed.
- C. In each site, deploy two servers that have both the Mailbox server role and the Client Access server role installed.
- D. In one site, deploy two servers that have the Mailbox server role installed.
- E. In all other sites, deploy one server that has the Client Access server role installed.

Answer: A

NEW QUESTION 234

You have an Exchange Server 2013 organization.

You deploy an anti-spam appliance and you connect the appliance to the Exchange Server organization.

You need to disable keyword filtering of email messages that are received from the Internet. Which Windows PowerShell cmdlet should you use?

- A. Set-SendConnector
- B. Remove-DeliveryAgentConnector
- C. Set-ContentConfig
- D. Disable-Service

Answer: B

Explanation: References: [https://technet.microsoft.com/en-us/library/dd297929\(v=exchg.160\).aspx](https://technet.microsoft.com/en-us/library/dd297929(v=exchg.160).aspx)

NEW QUESTION 238

You have an Exchange Server 2013 organization. You create a public folder.

You assign an email address to the public folder.

You need to ensure that only a user named User1 can add content to the public folder by using email. Which cmdlet should you run?

- A. Set-MailPublicFolder
- B. Set-PublicFolder
- C. Set-Mailbox
- D. Add-PublicFolderCMentPermission

Answer: C

NEW QUESTION 239

You have an Exchange Server 2013 organization that contains two servers named EX1 and EX2. EX1 and EX2 are the members of a database availability group (DAG) named DAG1.

EX1 and EX2 each contain a copy of a mailbox database named DB1. DB1 is configured to retain deleted items for 120 days.

At the end of each month, the mailbox databases on EX1 are backed up to tape. The monthly backups are retained for two years.

A user named User1 has a mailbox in DB1.

User1 discovers that a mailbox folder that contained important email messages was deleted more than six months ago.

You need to recover the deleted mailbox folder without affecting any other users who have mailboxes in DB1. Which three actions should you perform? (Each correct answer presents part of the solution. Choose three.)

- A. Run the New-MailboxRestoreRequest cmdlet.
- B. Run the New-MailboxDatabase cmdlet and specify the Recovery parameter.
- C. Restore DB1 from the tape backup to an alternate location.
- D. Restore DB1 from the tape backup to the database's original location.
- E. Run the New-Mailbox cmdlet and specify the Recovery parameter.

Answer: ABC

NEW QUESTION 243

You have an Exchange Server 2013 organization named contoso.com that contains 10 servers.

Your company purchases a company named Fabrikam, Inc. Fabrikam has an Exchange Server organization named fabrikam.com. All of the email messages sent between the organizations is routed over the Internet.

You need to ensure that the email messages sent from contoso.com to fabrikam.com are encrypted.

What is the best way to achieve the goal? More than one answer choice may achieve the goal. Select the BEST answer.

- A. Create a Send connector of type Partner.
- B. Instruct all of the users in contoso.com to use SMIME.
- C. Modify the Authentication settings for the Send connectors in contoso.com.
- D. Create a federation trust between the organizations.

Answer: A

NEW QUESTION 247

You have an Exchange Server 2013 organization named adatum.com. The organization contains five Mailbox servers and two Client Access servers.

You need to ensure that an administrator named user1 receives a daily email message that contains a log of all the Exchange Server administrative actions.

Which cmdlet should you use in a scheduled task?

- A. Search-AdminAuditLog
- B. Set-Mailbox
- C. New-AdminAuditLogSearch
- D. Set-ExchangeServer
- E. Set-AdminAuditLogConfig

Answer: C

NEW QUESTION 249

You deploy a server that has the Exchange Server 2013 Mailbox server role and Client Access server role installed.

You need to configure anti-spam to meet the following requirements:

Email messages sent from the Internet to a distribution list named Executives must be rejected.

Email messages that contain the words casino and jackpot must be rejected, unless they were sent to legal@contoso.com.

Which three cmdlets should you run? (Each correct answer presents part of the solution. Choose three.)

- A. Add-ContentFilterPhrase
- B. Set-ContentFilterConfig
- C. Set-TransportConfig
- D. Set-SenderReputationConfig
- E. Set-RecipientFilterConfig

Answer: ABE

NEW QUESTION 252

You have an Exchange Server 2013 organization that contains two servers named EX1 and EX2.

EX1 and EX2 are members of a database availability group (DAG) named DAG1. DAG1 contains four mailbox databases. All databases are active on EX1 and replicate to EX2.

You start an unplanned maintenance on EX1 and shut down EX1. You discover that the databases do not mount on EX2.

You restart EX1 and the databases mount automatically on EX1.

You need to identify what prevents the databases from switching over successfully to EX2. Which cmdlet should you run?

- A. Test-ServiceHealth
- B. Test-OutlookConnectivity
- C. Get-AvailabilityReportOutage
- D. Test-ReplicationHealth

Answer: D

NEW QUESTION 256

You have an Exchange Server 2013 organization named Contoso. The organization is configured to apply a disclaimer to all email messages sent to external recipients.

Your company works with a partner company named A. Datum Corporation. A. Datum has an SMTP domain named adatum.com.

You need to ensure that email messages sent to adatum.com meet the following compliance requirements: ? Messages sent to adatum.com must NOT include the disclaimer.

? Messages that contain credit card numbers must NOT be sent to adatum.com.

? If a user writes a message that contains a credit card number and the message is addressed to a recipient at adatum.com, the user must receive a notification before the message is sent.

What should you configure for each requirement?

To answer, drag the appropriate configuration to the correct requirement in the answer area. Each configuration may be used once, more than once, or not at all.

Additionally, you may need to drag the split bar

between panes or scroll to view content.

Configurations	Answer Area
a data loss prevention policy	Messages sent to adatum.com must NOT include the disclaimer. <input type="text" value="Configuration"/>
a MailTip	Messages that contain credit card numbers must NOT be sent to adatum.com. <input type="text" value="Configuration"/>
a message classification	If a user writes a message that contains a credit card number and the message is addressed to a recipient at adatum.com, the user must receive a notification before the message is sent. <input type="text" value="Configuration"/>
a Policy Tip	
a transport rule exception	

Answer:

Explanation: Box 1: A transport rule exception Box 2: A data loss prevention policy Box 3: a Policy Tip

NEW QUESTION 259

You have an Exchange Server 2013 organization that contains three servers named EX1, EX2, and EX3. The servers are members of a database availability group (DAG) named DAG1. A mailbox database named DB1 is replicated to all the members of DAG1.

EX3 experiences a complete hardware failure. You need to restore EX3 on a new server. You reset the computer account for EX3. Which three actions should you perform next?

To answer, move the three appropriate actions from the list of actions to the answer area and arrange them in the correct order.

Actions	Answer Area
On EX1, run the Set-DatabaseAvailabilityGroup cmdlet and the New-MailboxDatabaseCopy cmdlet.	
On EX1, run the Remove-MailboxDatabaseCopy cmdlet and the Remove-DatabaseAvailabilityGroupServer cmdlet.	
On a new server named EX3, run the setup / m:recoverserver command.	
On EX1, run the Add-DatabaseAvailabilityGroupServer cmdlet and the Add-MailboxDatabaseCopy cmdlet.	
On EX1, run the setup / newprovisionedserver:ex3 command.	

Answer:

Explanation:

Actions	Answer Area
On EX1, run the Set-DatabaseAvailabilityGroup cmdlet and the New-MailboxDatabaseCopy cmdlet.	On EX1, run the Remove-MailboxDatabaseCopy cmdlet and the Remove-DatabaseAvailabilityGroupServer cmdlet.
On EX1, run the Remove-MailboxDatabaseCopy cmdlet and the Remove-DatabaseAvailabilityGroupServer cmdlet.	On a new server named EX3, run the setup / m:recoverserver command.
On a new server named EX3, run the setup / m:recoverserver command.	On EX1, run the Add-DatabaseAvailabilityGroupServer cmdlet and the Add-MailboxDatabaseCopy cmdlet.
On EX1, run the Add-DatabaseAvailabilityGroupServer cmdlet and the Add-MailboxDatabaseCopy cmdlet.	
On EX1, run the setup / newprovisionedserver:ex3 command.	

NEW QUESTION 261

You have an Exchange Server 2013 organization that contains a database availability group (DAG). There are four copies of every mailbox database. One of the copies is a lagged copy configured to have a replay lag time of 14 days. All mailboxes have single item recovery enabled. All databases are configured to have a deleted item retention period of seven days. A company executive reports that an email message, which was deleted 10 days ago, must be restored. You need to ensure that you can recover the email message from the lagged copy of the mailbox database. The solution must preserve the lagged copy of the mailbox database. Which three actions should you perform?

To answer, move the three appropriate actions from the list of actions to the answer area and arrange them in the correct order.

Actions	Answer Area
Run the vssadmin command.	
Run the Move-ActiveMailboxDatabase cmdlet and specify the <i>-skiplogchecks</i> parameter.	
Run the eseutil.exe command.	
Run the Suspend-MailboxDatabaseCopy cmdlet.	

Answer:

Explanation: Run the Suspend-MailboxDatabaseCopy cmdlet. Run the vssadmin command. Run the eseutil.exe command.

NEW QUESTION 262

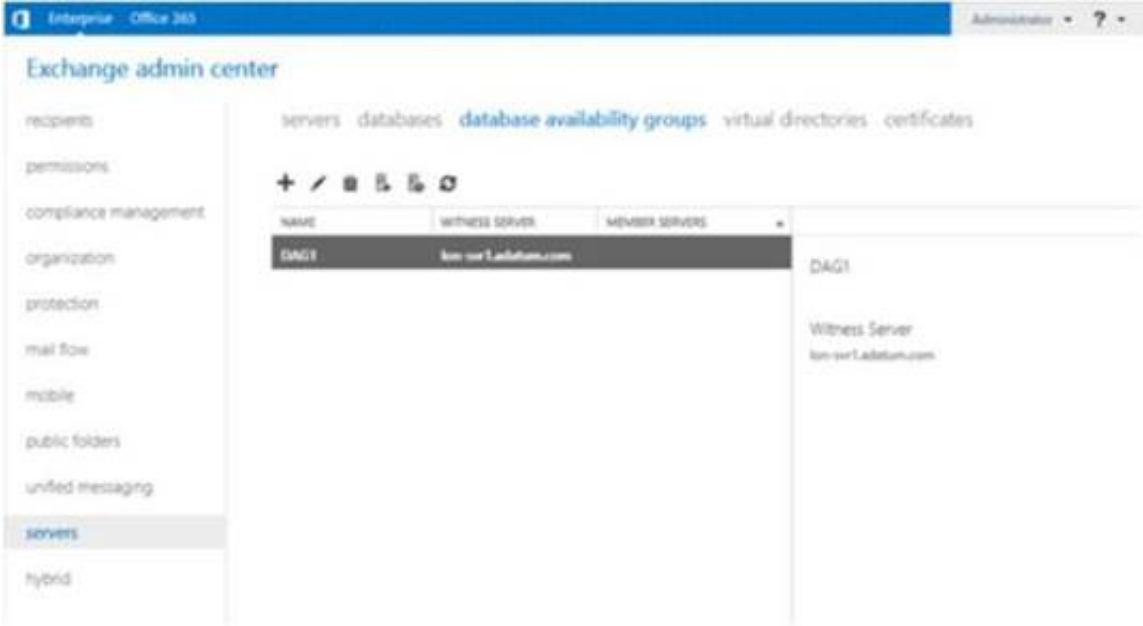
Your company has an Exchange Server 2013 organization. All Exchange servers have the Client Access server role and the Mailbox server role installed. All of the servers are members of a database availability group (DAG) named DAG1. You need to ensure that a user named User1 can move mailboxes between the servers. The solution must minimize the number of permission assigned to User1. To which role group should you add User1?

- A. Server Management
- B. Organization Management
- C. Help Desk
- D. Recipient Management

Answer: D

NEW QUESTION 263

You have an Exchange Server 2013 organization that contains two Mailbox servers named EX01 and EX02. Both servers are in the same Active Directory site. On EX01, you create the first public folder mailbox in a database named DB1. You view the Exchange Admin Center as shown in the exhibit. (Click the Exhibit button.)



Use the drop-down menus to select the answer choice that completes each statement.

Answer Area

If the server hosting the active copy of the DB1 database is unavailable, clients will be **[answer choice]**

The public folder hierarchy **[answer choice]**

Answer Area

If the server hosting the active copy of the DB1 database is unavailable, clients will be **[answer choice]**

The public folder hierarchy **[answer choice]**

Answer:

Explanation: **Answer Area**

If the server hosting the active copy of the DB1 database is unavailable, clients will be **[answer choice]**

The public folder hierarchy **[answer choice]**

NEW QUESTION 266

You have an Exchange Server 2013 organization. You deploy the anti-spam features of Exchange Server 2013. You need to specify the spam quarantine mailbox. Which cmdlet should you run?

- A. Set-MailboxJunkEmailConfiguration
- B. Set-ContentFilterConfig
- C. Set-MalwareFilterPolicy
- D. Set-SenderFilterConfig

Answer: B

NEW QUESTION 269

Your company has an Exchange Server 2013 organization named contoso.com. All users run Microsoft Outlook 2010 or Outlook 2013. The company recently acquired another company named A. Datum Corporation. All of the users at A. Datum run Linux-based computers and use a third-party IMAP client to access their email messages. You configure IMAP over SSL to use the external URL of mail.contoso.com. You need to publish the IMAP settings to Outlook Web App. What command should you run? (To answer, select the appropriate options in the answer area.)

Answer Area

Answer Area

<div><div></div><div>Set-IMAPSettings</div><div>Set-OWAVirtualDirectory</div><div>Set-ReceiveConnector</div></div>	<div><div></div><div>-AdvertiseClientSettings</div><div>-Banner</div><div>-ExternalConnectionSettings</div><div>-FQDN</div></div>	<div><div></div><div>\$false</div><div>\$true</div><div>mail.contoso.com:143:SSL</div><div>mail.contoso.com:443:SSL</div><div>mail.contoso.com:993:SSL</div></div>
--	---	--

Answer:

Explanation: Answer Area

<div><div></div><div>Set-IMAPSettings</div><div>Set-OWAVirtualDirectory</div><div>Set-ReceiveConnector</div></div>	<div><div></div><div>-AdvertiseClientSettings</div><div>-Banner</div><div>-ExternalConnectionSettings</div><div>-FQDN</div></div>	<div><div></div><div>\$false</div><div>\$true</div><div>mail.contoso.com:143:SSL</div><div>mail.contoso.com:443:SSL</div><div>mail.contoso.com:993:SSL</div></div>
--	---	--

NEW QUESTION 273

Your company plans to deploy an Exchange Server 2013 organization. The network contains an Active Directory forest. The forest contains two domains named contoso.com and child.contoso.com. The forest contains one Active Directory site. To contoso.com, you plan to deploy two servers that have Exchange Server 2013 installed. To child.contoso.com, you plan to deploy two servers that have Exchange Server 2013 installed. To the contoso.com domain, you deploy a new member server named Server1 that runs Windows Server 2012. You need to prepare the forest for the planned deployment of Exchange Server 2013. Which three commands should you run from Server1?

To answer, move the three appropriate commands from the list of commands to the answer area and arrange them in the correct order.

Commands	Answer Area
setup /preparead	
install-windowsfeature rsat-adds	
install-windowsfeature rsat-ad-admincenter	
setup /prepareschema	
setup /preparedomain	

Answer:

Explanation: Box 1: install-windowsfeature rsat-adds Box 2: setup /preparead Box 3: setup /preparedomain

NEW QUESTION 278

Your network contains an Active Directory forest. The forest contains a single domain named contoso.com. You have an Exchange Server 2013 organization that contains one Client Access server named CAS1 and one Mailbox server named MBX1. You plan to enable Outlook Anywhere for remote access from non-domain joined client computers. You deploy a trusted third-party certificate that has a subject name of mail.contoso.com. Users report that they fail to access their email by using Microsoft Outlook 2013 when they work remotely from a non-domain joined client computer. From the internal network, the users can access their email by using Outlook 2013. You verify that Autodiscover is configured remotely. You need to ensure that the remote users can access their email by using Outlook Anywhere. Which command should you run? (To answer, select the appropriate options in the dialog box in the answer area.)

Answer Area

<div><div></div><div>Set-OutlookAnywhere</div><div>Set-ClientAccessServer</div><div>Set-OutlookProvider</div></div>	<div><div></div><div>-ExternalHostName</div></div> <div><div><div></div><div>mail.contoso.com</div><div>cas1.contoso.com</div><div>mbx1.contoso.com</div><div>\$null</div></div></div>
<div><div></div><div>-ExternalClientAuthenticationMethod Basic</div><div>-ExternalClientRequireSSL</div></div> <div><div><div></div><div>\$true</div><div>\$false</div></div></div>	

Answer:

Explanation: **Answer Area**

Set-OutlookAnywhere
Set-ClientAccessServer
Set-OutlookProvider

-ExternalHostName

mail.contoso.com
cas1.contoso.com
mbx1.contoso.com
\$null

-ExternalClientAuthenticationMethod Basic -ExternalClientRequireSSL

\$true
\$false

NEW QUESTION 280

Your company has a main office and three branch offices.
You have an Exchange Server 2013 organization. The main office contains five Exchange servers. Each branch office contains two Exchange servers. All of the servers have all of the Exchange server roles installed. Each branch office contains one database availability group (DAG).
You need to recommend a load balancing solution for the branch offices. The solution must ensure that both servers in each office are the targets of all client connections.
What are two possible recommendations? Each correct answer presents a complete solution.

- A. DNS round robin
- B. Layer 4 hardware load balancers
- C. CAS arrays
- D. Network Load Balancing (NLB) clusters

Answer: BC

NEW QUESTION 282

You deploy an Exchange Server 2013 organization to a test network for evaluation.
You install the Mailbox server role and the Client Access server role on a server named ex01.contoso.com. You do not perform any other configurations.
All of the ports from the Internet to ex01.contoso.com are open. You successfully connect to ex01.contoso.com from the Internet and from the internal network.
You need to identify which types of Exchange Server clients will connect successfully to the organization without any further configurations.
What should you identify?

- A. Internal IMAP clients
- B. Internal Microsoft Outlook connections
- C. Windows RT devices running the Mail app
- D. Android Phones using Activesync

Answer: B

NEW QUESTION 287

You have an Exchange Server 2013 organization that contains a server named EX1. You have a user named User1 in the marketing department.
You need to prevent User1 from submitting more than 50 email messages per minute to the Exchange Server organization by using Microsoft Outlook.
Which three commands should you run?
To answer, move the three appropriate commands from the list of commands to the answer area and arrange them in the correct order.

Commands	Answer Area
new-workloadpolicy -workloadtype transport 50	
\$b = get-throttlingpolicy limits	
set-mailbox -identity user1 -throttlingpolicy \$b	
set-mailbox -identity user1 -recipientlimits 50	
new-throttlingpolicy limits -messengeratelimit 50	
set-transportserver -identity ex1 -maxoutboundconnections \$b	
new-throttlingpolicy limits -recipientratelimit 50	

Answer:

Explanation:

Commands	Answer Area
new-workloadpolicy -workloadtype transport 50	new-throttlingpolicy limits -messageratelimit 50
\$b = get-throttlingpolicy limits	
set-mailbox -identity user1 -throttlingpolicy \$b	\$b = get-throttlingpolicy limits
set-mailbox -identity user1 -recipientlimits 50	
new-throttlingpolicy limits -messageratelimit 50	set-mailbox -identity user1 -throttlingpolicy \$b
set-transportserver -identity ex1 -maxoutboundconnections \$b	
new-throttlingpolicy limits -recipientratelimit 50	

NEW QUESTION 288

You have an Exchange Server 2010 organization. Users access Outlook Web App by using the name mail.contoso.com. You deploy Exchange Server 2013 to the existing organization. You change the DNS record of mail.contoso.com to point to an Exchange Server 2013 Client Access server. The users report that they can no longer access their mailbox from Outlook Web App. The OWA virtual directory in Exchange Server 2010 is configured as shown in the exhibit. (Click the Exhibit button.)

```
Exchange2003Url :  
FailbackUrl :  
LegacyRedirectType : Silent  
CrossSiteRedirectType : Manual  
Name : owa (Default Web Site)  
InternalAuthenticationMethods : (Basic, Fba)  
MetabasePath : IIS://CON2818.contoso.com/W3SVC/1/ROOT/owa  
BasicAuthentication : True  
WindowsAuthentication : False  
DigestAuthentication : False  
FormsAuthentication : True  
LiveIdAuthentication : False  
DefaultDomain :
```

You need to ensure that the users on Exchange Server 2010 can access Outlook Web App. Which setting should you change?

- A. WindowsAuthentication
- B. FormsAuthentication
- C. LegacyRedirectType
- D. FailbackUri

Answer: A

NEW QUESTION 292

You have an Exchange Server 2010 organization that contains 10 Client Access servers and 20 Mailbox servers. The organization has several throttling policies deployed. You need to identify which throttling policies will be used for different connection scenarios. In the table below identify which throttling policies will be used for each scenario. NOTE: Make only one selection in each row.

Answer Area		
Scenario	Exchange Server 2010 throttling policies	Exchange Server 2013 throttling policies
Users have a mailbox in an Exchange Server 2010 mailbox database and access their mailbox from Exchange Server 2010 Client Access server.	<input type="radio"/>	<input type="radio"/>
Users have a mailbox in an Exchange Server 2010 mailbox database and access their mailbox from Exchange Server 2013 Client Access server.	<input type="radio"/>	<input type="radio"/>
Users have a mailbox in an Exchange Server 2013 mailbox database and access their mailbox from Exchange Server 2013 Client Access server.	<input type="radio"/>	<input type="radio"/>

Answer:

Explanation:

Answer Area

Scenario	Exchange Server 2010 throttling policies	Exchange Server 2013 throttling policies
Users have a mailbox in an Exchange Server 2010 mailbox database and access their mailbox from Exchange Server 2010 Client Access server.	<input checked="" type="radio"/>	<input type="radio"/>
Users have a mailbox in an Exchange Server 2010 mailbox database and access their mailbox from Exchange Server 2013 Client Access server.	<input type="radio"/>	<input checked="" type="radio"/>
Users have a mailbox in an Exchange Server 2013 mailbox database and access their mailbox from Exchange Server 2013 Client Access server.	<input type="radio"/>	<input checked="" type="radio"/>

NEW QUESTION 294

You have an Exchange Server 2013 organization.

You create two distribution groups named Group1 and Group2. Group1 and Group2 each contain several hundred users. Group1 contains a user named User1.

You need to configure moderation for Group2. The solution must meet the following requirements: Email sent from the members of Group1 must NOT be moderated unless the sender is User1.

All other email must be moderated by a user named Admin1.

Which two actions should you perform? (Each correct answer presents part of the solution. Choose two.)

- A. Create a transport rule that has a condition of The recipient is Group2. Configure the transport rule to have an action of Forward the message for approval to Admin1.
- B. Run Set-DistributionGroup Group2 -ModeratedBy Admin1-BypassModerationFromSendersOrMembers Group1 -ModerationEnabled \$true.
- C. Create a transport rule that has the conditions of The sender is User1 and The recipient is Group2. Configure the transport rule to have an action of Forward the message for approval to Admin1.
- D. Create a transport rule that has the conditions of The sender is User1 and The recipient is Group2. Configure the transport rule to have an action of Forward the message for approval to Admin1.

Answer: BC

NEW QUESTION 299

Your company has four offices. Each office is configured as an Active Directory site.

You have an Exchange Server 2013 organization that contains nine servers. The servers are configured as shown in the following table.

Server name	Role	Site name
CAS1	Client Access	Site1
CAS2	Client Access	Site2
CAS3	Client Access	Site3
CAS4	Client Access	Site4
MBX1	Mailbox	Site1
MBX2	Mailbox	Site2
MBX3	Mailbox	Site3
MBX4	Mailbox	Site3
MBX5	Mailbox	Site4

A user named User1 is in a distribution group named D_Sales. The mailbox of User1 is in a database that is active on MBX4 and is configured to use MBX5 as an expansion server.

You need to ensure that email sent to D_Sales from the Internet is received by CAS1, and then routed from MBX1 to MBX4.

What should you do?

- A. Configure Site1 as a hub site.
- B. Modify the expansion server setting of D_Sales.
- C. Modify the SubmissionServerOverrideList list on MBX1.
- D. Configure Site3 as a hub site.

Answer: D

NEW QUESTION 303

Your network contains an Active Directory forest named contoso.com. The forest contains an enterprise root certification authority (CA) named CA1. The network contains a server named EX1 that has Exchange Server 2013 installed.

A partner company named A. Datum Corporation has an Active Directory domain named adatum.com. The domain contains a server named EX5 that has Exchange Server 2010 Service Pack 2 (SP2) installed. EX5 has a Receive connector that is configured for mutual TLS.

Users in contoso.com plan to send email messages that contain sensitive data to users in adatum.com. You need to ensure that all of the email messages sent from contoso.com to adatum.com are encrypted by using TLS. The solution must ensure that EX1 and EX5 validate server certificates.

Which three actions should you perform? (Each correct answer presents part of the solution. Choose three.)

- A. Run the set-transportconfig -tlssenddomainsecurelist contoso.com command.
- B. Install a certificate, and then assign the certificate to the IIS service.
- C. Send the root certificate for contoso.com to the administrators in adatum.com.
- D. Run the New-SendConnector cmdlet and specify the domainsecureenabled parameter.
- E. Run the New-SendConnector cmdlet and specify the tlsdomainparameter.
- F. Run the set-transportconfig -tlssenddomainsecurelist adatum.com command.

- G. Install a certificate, and then assign the certificate to the SMTP service.
- H. Send the root certificate for contoso.com to the administrators in adatum.com.

Answer: ADF

NEW QUESTION 304

You have an Exchange Server 2013 organization that contains several custom RBAC management roles. You need to identify which RBAC scopes must be used to meet the following requirements:

Manage only the mailboxes of the users in the sales department.

Manage the properties of all the mailbox databases.

Which RBAC scopes should you identify? (To answer, drag the appropriate RBAC scopes to the correct requirements. Each RBAC scope may be used once, more than once, or not at all. You may need to drag the split bar between panes or scroll to view content.)

RBAC Scopes

The Organization relative scope

The OrganizationConfig implicit scope

The Recipient filter explicit scope

The Self implicit scope

Answer Area

Manage only the mailboxes of the users in the sales department.

RBAC scope

Manage the properties of all the mailbox databases.

RBAC scope

Answer:

Explanation:

RBAC Scopes

The Organization relative scope

The OrganizationConfig implicit scope

The Recipient filter explicit scope

The Self implicit scope

Answer Area

Manage only the mailboxes of the users in the sales department.

The Recipient filter explicit scope

Manage the properties of all the mailbox databases.

The OrganizationConfig implicit scope

NEW QUESTION 307

You have an Exchange Server 2013 organization that contains two Client Access servers and two Mailbox servers.

You configure DNS round robin on the Client Access servers. All of the host (A) and alias (CNAME) records in the DNS zone are configured to have a TTL value of 10 minutes.

You need to recommend a solution to fail over client connections to a Client Access server automatically if Internet Information Services (US) fails. The solution must minimize costs.

What should you recommend?

- A. Deploy a Client Access server array.
- B. Reduce the TTL values on all of the A and CNAME records to one minute.
- C. Deploy a hardware load balancing solution.
- D. Deploy Network Load Balancing (NLB) on each Client Access server.

Answer: C

NEW QUESTION 308

You deploy an Active Directory forest that contains two domains named contoso.com and child.contoso.com. You plan to deploy Exchange Server 2013 servers to the child.contoso.com domain.

You need to prepare Active Directory for the installation of the first Exchange Server 2013 servers.

Which command should you run in each domain? (To answer, drag the appropriate commands to the correct domains. Each command may be used once, more than once, or not at all. You may need to drag the split bar between panes or scroll to view content.)

Commands

setup /preparead

setup /preparedomain

setup /prepareschema

Answer Area

Contoso.com:

Command

Child.contoso.com:

Command

Answer:

Explanation:

Commands

setup /preparead

setup /preparedomain

setup /prepareschema

Answer Area

Contoso.com:

setup /preparead

Child.contoso.com:

setup /preparedomain

NEW QUESTION 312

You have an Exchange Server 2013 organization named for A.Datum Inc. A user named User1 is a member of the Domain Admins group. User1 fails to synchronize a new Windows Phone device by using Exchange ActiveSync and receives an HTTP 500 error message. User1 successfully logs on to Outlook Web App and Outlook Anywhere. You need to ensure that User1 can synchronize the new Windows Phone device by using Exchange ActiveSync. Which two tasks should you perform? (Each correct answer presents a complete solution. Choose two.)

- A. Disable permission inheritance on the User1 user account.
- B. Enable permission inheritance on the User1 user account.
- C. Install a trusted root certificate on the Windows Phone device.
- D. Create a new mobile device mailbox policy.
- E. Modify the Exchange ActiveSync policy that applies to User1's mailbox.

Answer: BE

NEW QUESTION 313

You have an Exchange Server 2013 organization. An Active Directory administrator is concerned about the permissions assigned to a group named Exchange Trusted Subsystem. Exchange Trusted Subsystem has a member named Exchange Windows Permissions. You need to show the Active Directory administrator all of the permissions assigned to Exchange Trusted Subsystem. What should you use?

- A. ADSI Edit
- B. Active Directory Sites and Services
- C. Dsget
- D. Active Directory Users and Computers

Answer: D

NEW QUESTION 316

You have an Exchange Server 2013 organization that contains three moderated distribution groups named DG1, DG2, and DG3. DG3 is a member of DG2. You need to exclude from moderation the email messages sent from the members of DG3 to the members of DG1. The solution must maintain moderation for the email messages sent from all other users. What command should you run? (To answer, select the appropriate options in the answer area,)

Answer Area

Set-DistributionGroup -Identity

Answer Area

Set-DistributionGroup -Identity

DG1	-AcceptMessagesOnlyFromDLMembers	DG1
DG2	-BypassModerationFromSendersOrMembers	DG2
DG3	-BypassNestedModerationEnabled	DG3
	-ModerationEnabled	\$false
		\$true

Answer:

Explanation: **Answer Area**

Set-DistributionGroup -Identity

DG1	-AcceptMessagesOnlyFromDLMembers	DG1
DG2	-BypassModerationFromSendersOrMembers	DG2
DG3	-BypassNestedModerationEnabled	DG3
	-ModerationEnabled	\$false
		\$true

NEW QUESTION 320

Your company has a main office and a branch office. You have an Exchange Server 2013 organization. The company recently built a new meeting room in the branch office. You need to ensure that the meeting room is available by using the Room Finder feature in Microsoft Outlook. Which cmdlet should you run?

- A. Set-MailboxCalendarConfiguration
- B. New-Mailbox
- C. Set-CalendarProcessing
- D. New RemoteMailbox

Answer: B

NEW QUESTION 322

Your network contains two Active Directory sites named MainSite and DRSite. You have an Exchange Server 2013 organization that contains two servers. The servers are configured as shown in the following table.

Server name	Site	Role	Database availability group (DAG) name	Mailbox database copy name
EX1	MainSite	Mailbox Client Access	DAG1	DB1
EX2	DRSite	Mailbox Client Access	DAG1	DB1

The active copy of DB1 is located on EX1. There are typically 100 MB of log files queued on EX1.

You need to recommend a procedure to allow administrators to mount the mailbox database copies on EX2 if EX1 fails. The recovery point objective (RPO) for mailbox data is 200 MB.

Which command should you recommend running? (To answer, select the appropriate options in the answer area.)

Answer Area

Answer Area

Move-ActiveMailboxDatabase
Restore-DatabaseAvailabilityGroup
Set-MailboxServer

DB1 - ActivateOnServer EX2
-Identity DAG1
-Identity EX2

-MountDialOverride:BestEffort
-MountDialOverride:Lossless
-AutoDatabaseMountDial: BestAvailability
-AutoDatabaseMountDial: GoodAvailability

Answer:

Explanation: Answer Area

Move-ActiveMailboxDatabase
Restore-DatabaseAvailabilityGroup
Set-MailboxServer

DB1 - ActivateOnServer EX2
-Identity DAG1
-Identity EX2

-MountDialOverride:BestEffort
-MountDialOverride:Lossless
-AutoDatabaseMountDial: BestAvailability
-AutoDatabaseMountDial: GoodAvailability

NEW QUESTION 325

A company named Fabrikam, Ltd. has an Exchange Server 2013 organization that contains two servers. The servers are configured as shown in the following table.

Server name	Role	Exchange Server version
EX1	Mailbox server Client Access server Hub Transport server	Exchange Server 2007 Service Pack 3 (SP3)
EX2	Mailbox server Client Access server	Exchange Server 2013 Cumulative Update 1 (CU1)

You configure the internal and external namespaces named mail.fabrikam.com and autodiscover.fabrikam.com to point to EX2.

You configure Outlook Anywhere on EX1 as shown in the following table.

Setting	Value
ClientAuthenticationMethod	Basic
IISAuthenticationMethods	NTLM

You configure Outlook Anywhere on EX2 as shown in the following table.

Setting	Value
ExternalClientAuthenticationMethod	Basic
InternalClientAuthenticationMethod	NTLM
IISAuthenticationMethods	Basic NTLM Negotiate

You need to ensure that all of the users on EX1 can connect to their mailbox by using Microsoft Outlook from the Internet.

What should you do?

- A. Change the authentication settings of EX1.
- B. Disable IPv6 on EX1.
- C. Change the authentication settings of EX2.
- D. Disable Outlook Anywhere on EX1.

Answer: A

NEW QUESTION 327

You have an Exchange Server organization. The organization contains a server named EX01 that has Exchange Server 2010 installed and a server named EX02 that has Exchange Server 2013 installed.

Your mailbox is hosted on EX01.

You need to access the Exchange Admin Center (EAC). Which URL should you use?

- A. [https://EX01/ecp?ExchClientVer= 14](https://EX01/ecp?ExchClientVer=14)
- B. [https://EX02/ecp?ExchClientVer= 15](https://EX02/ecp?ExchClientVer=15)
- C. <https://EX02/eac?ExchClientVer=15>
- D. <https://EX01/ecp?ExchClientVer=15>

Answer: B

NEW QUESTION 329

Your company has a main office and three branch offices. The main office is located in Austin. The branch offices are located in Denver, San Diego, and Chicago.

The network contains an Active Directory forest. The forest contains a single domain. Each office is configured as an Active Directory site. The site in Austin contains four domain controllers that run Windows Server 2008 R2 and are configured as global catalog servers. The sites in Denver, San Diego, and Chicago each contain a read-only domain controller (RODC) that runs Windows Server 2008 R2. No other domain controllers exist on the network. You plan to deploy an Exchange Server 2013 organization. Exchange Server 2013 servers will be deployed in the Austin, Denver, and San Diego sites. Users from the Chicago site will access their mailbox remotely. You need to recommend changes to the Active Directory infrastructure to support the planned deployment of Exchange Server 2013. What should you recommend?

- A. Replace the RODCs in the Denver and San Diego sites with domain controllers that are configured as global catalog servers.
- B. Configure the RODCs in the Denver and San Diego sites as read-only global catalog servers.
- C. Configure Active Directory automatic site coverage for the Chicago site.
- D. Upgrade all of the RODCs to Windows Server 2012.

Answer: A

NEW QUESTION 332

Your network contains an Active Directory forest. The forest contains a single domain named fabrikam.com. You have an Exchange Server organization that contains four servers. The servers are configured as shown in the following table.

Server name	Role	Exchange Server version
EX1	Client Access Hub Transport	Exchange Server 2010
EX2	Mailbox	Exchange Server 2010
EX3	Client Access	Exchange Server 2013
EX4	Mailbox	Exchange Server 2013

You plan to enable Outlook Anywhere for all users. You plan to configure the users to connect to the name oa.fabrikam.com. The IP address of oa.fabrikam.com points to EX3. You need to ensure that users on EX2 and EX4 can access their mailbox by using Outlook Anywhere. Which command should you run on EX1 and EX3? (To answer, drag the appropriate cmdlets to the correct servers. Each cmdlet may be used once, more than once, or not at all. You may need to drag the split bar between panes or scroll to view content.)

Cmdlets

Enable-OutlookAnywhere
Disable-OutlookAnywhere
Set-ClientAccessServer
Set-OutlookAnywhere
Set-OutlookProvider

Answer Area

EX1:

Cmdlet

EX3:

Cmdlet

Answer:

Explanation:

Cmdlets

Enable-OutlookAnywhere
Disable-OutlookAnywhere
Set-ClientAccessServer
Set-OutlookAnywhere
Set-OutlookProvider

Answer Area

EX1:

Enable-OutlookAnywhere

EX3:

Set-OutlookAnywhere

NEW QUESTION 333

.....

Thank You for Trying Our Product

We offer two products:

1st - We have Practice Tests Software with Actual Exam Questions

2nd - Questions and Answers in PDF Format

70-341 Practice Exam Features:

- * 70-341 Questions and Answers Updated Frequently
- * 70-341 Practice Questions Verified by Expert Senior Certified Staff
- * 70-341 Most Realistic Questions that Guarantee you a Pass on Your First Try
- * 70-341 Practice Test Questions in Multiple Choice Formats and Updates for 1 Year

100% Actual & Verified — Instant Download, Please Click
[Order The 70-341 Practice Test Here](#)