

352-001 Dumps

CCDE Written Exam

<https://www.certleader.com/352-001-dumps.html>



NEW QUESTION 1

The cloud service provider CSP is planning to launch five data centers in Egypt, United Arab Emirates, Saudi Arabia, Qatar and Turkey. CSP is looking for VLAN extension and DCIs between these five data centers to allow for software replication, where original and backup VMs must be on the same subnet. Which tunneling technology must they use?

- A. VPLS
- B. IPsec VPN
- C. VPWS
- D. L2TPv3

Answer: A

NEW QUESTION 2

Company ABC is using an Ethernet virtual circuit as its provider's DCI solution. A goal is to reduce the time to detect the link failure. Which protocol accomplishes this goal?

- A. UDLD
- B. Spanning tree bridge assurance
- C. Link aggregation group
- D. Ethernet OAM

Answer: D

NEW QUESTION 3

What is an implication of using route reflectors in an iBGP topology?

- A. Route reflection limits the total number of iBGP routers.
- B. Route reflection causes traffic to flow in a hub-and-spoke fashion.
- C. The manipulation of BGP attributes is not supported on the other routers than the route reflectors.
- D. Route reflectors can create routing loops when more than one router reflector is used in the same cluster.
- E. Multipath information is difficult to propagate in a route reflector topology.

Answer: E

NEW QUESTION 4

Which three options are important design functions of IPv6 first-hop security? (Choose three)

- A. It prevents rogue DHCP servers from assigning IPv6 addresses.
- B. It prevents IPv6 packets fragmentation.
- C. It limits IPv6 route advertisement in the network.
- D. It implements a broadcast-control mechanism.
- E. It suppresses excessive multicast neighbor discovery.
- F. It implements multihoming security.

Answer: ACE

NEW QUESTION 5

You have been asked to design a wireless network solution that will implement context-aware services on an existing network that was initially deployed for data traffic only. Which two design principles would you follow to increase the location accuracy with the least possible impact on the current setup? (Choose two.)

- A. Use directional antennas to provide better cell separation.
- B. Add access points along the perimeter of the coverage area.
- C. Install additional APs in monitor mode where the co-channel interference would otherwise be affected.
- D. Increase the AP density to create an average inter-access point distance of less than 40 ft. | 12.2 meters
- E. Fine tune the access point's radio configuration to have a higher average transmission power to achieve better coverage.

Answer: AD

NEW QUESTION 6

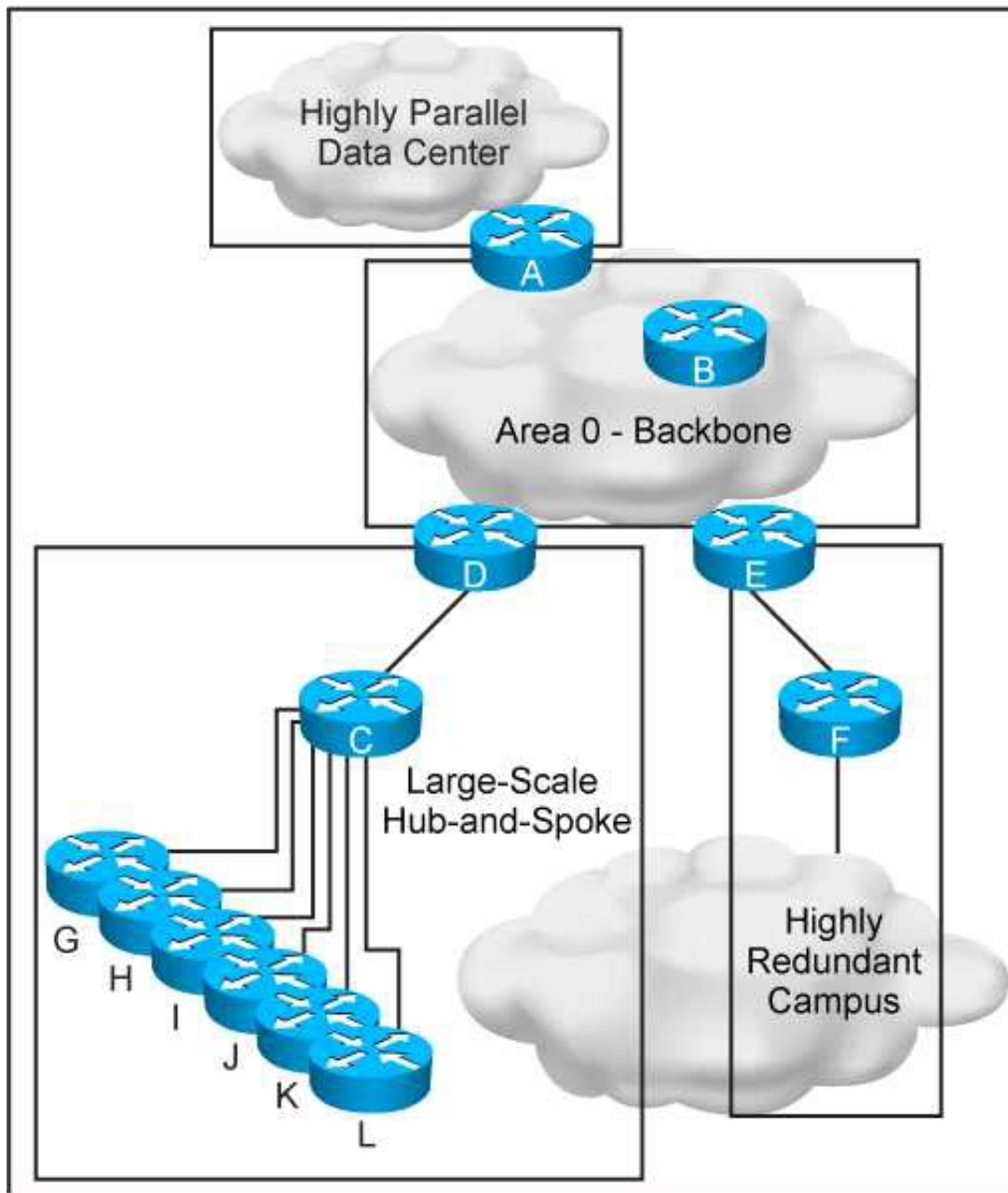
Which major block is not included in the ETSI network Function Virtualization reference framework?

- A. Network Function Virtualization Infrastructure
- B. Network Function Virtualization Management and Orchestration
- C. Network Function Virtualization Policy Manager
- D. Virtualized Network Function/ Element Management Systems

Answer: C

NEW QUESTION 7

Refer to the exhibit.



This new OSPF network has four areas, but the hub-and-spoke area experiences frequent flapping. In order to fix this design failure, which two mechanisms can you use to isolate the data center area from the hub-and-spoke area without losing Ip connectivity? (Choose two)

- A. Use OSPF distribute-list filtering on router A
- B. Deploy a prefix summarization on router D
- C. Make the data center area a NSSA
- D. Make the data center area totally stub
- E. Convert the data center area to EIGRP protocol

Answer: BD

NEW QUESTION 8

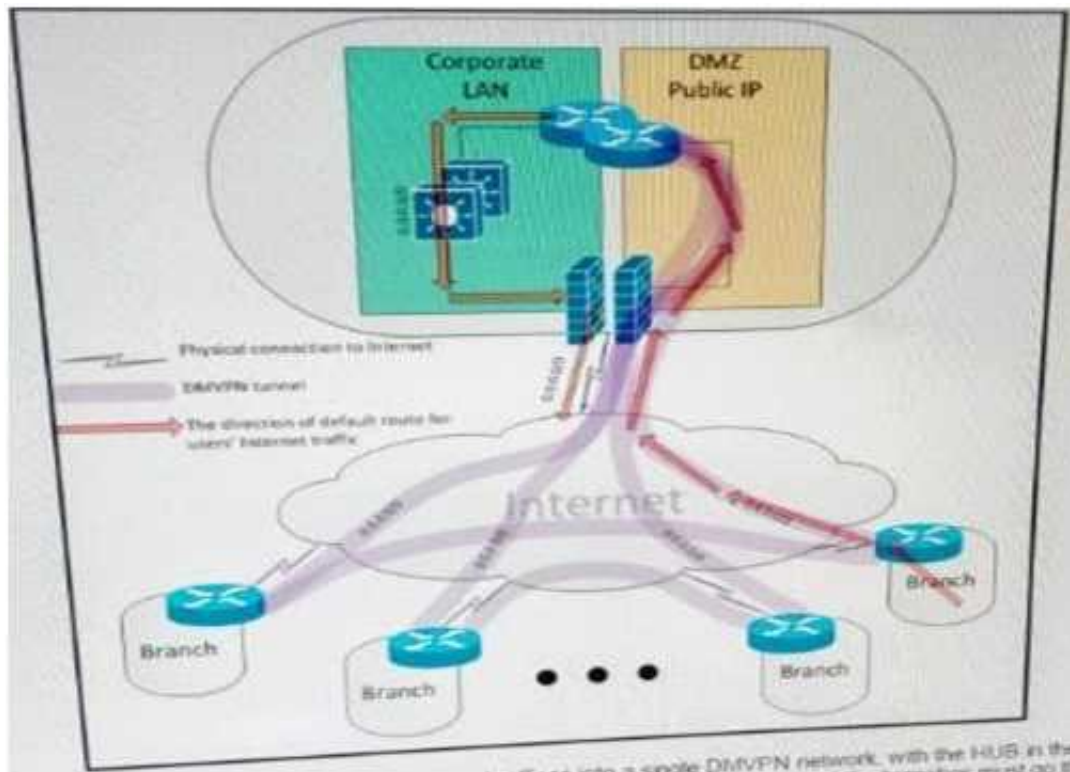
Which IEEE standard is commonly used at the data link layer for an access network, in an IoT environment?

- A. Wireless Regional Area Network
- B. Low-Rate Wireless Network
- C. Wireless Local Area Network
- D. Broadband wireless metropolitan Network

Answer: B

NEW QUESTION 9

Refer to the exhibit.



A customer interconnected hundreds of branch offices into a single DMVPN network, with the HUB in the main data center. Due to security policies, the customer requires that the default route for all Internet traffic from the users at the branches must go through the tunnel and the only connections that are allowed to and from the branch router over the local internet circuit are the DMVPN tunnels. Which two combined actions must you take on the branch router to address these security requirements and keep the solution scalable? (Choose two)

- A. Place the WAN interface in a front-door VRF, leaving the tunnel interface in the default routing instance
- B. Protect the WAN interface by an inbound ACL that permits only IPsec-related traffic
- C. Implement a zone-based firewall that allows only IPsec-related traffic from zone UNTRUSTED to zone TRUSTED
- D. Add a host route for the public IP address of each remote branch and HUB routers that points directly to the local ISP, and add a default route that points to the tunnel
- E. Use a floating default route with the preferred path over the tunnel and a backup path over the Internet natively

Answer: AB

NEW QUESTION 10

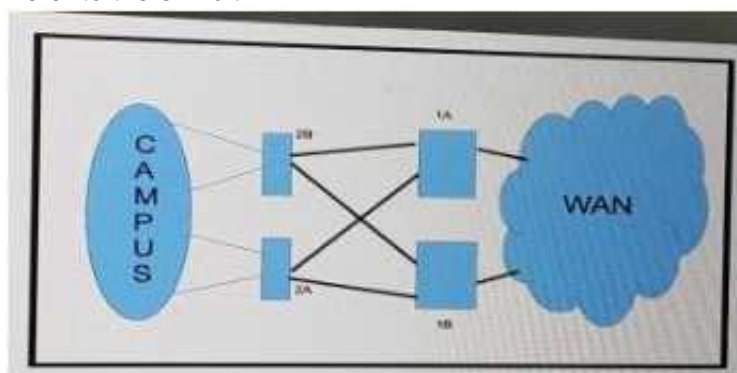
When you design a network that uses IPsec, where can you reduce MTU to avoid network fragmentation?

- A. on both ends of the TCP connection
- B. on the side closest to the client
- C. on the side closest to the server
- D. in the WAN

Answer: A

NEW QUESTION 10

Refer to the exhibit.



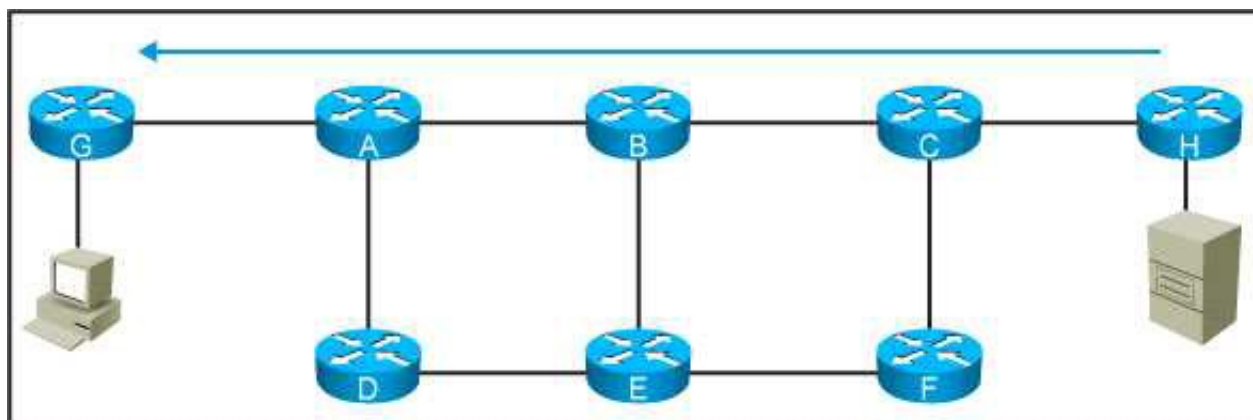
How should you redesign this network running BGP to improve availability of the routers 1A and 1B at the core site?

- A. Deploy BGP PIC
- B. Use link bundles over multiple slots
- C. Enable graceful restart
- D. Create a multichassis system with the two routers

Answer: A

NEW QUESTION 15

Refer to the exhibit.



This network is running IS-IS as the single routing protocol and the LSP and SPF timers are aggressively configured so the network converges in subsecond. The customer reports that router B had a memory crash and reloaded. Which resulted in some packets from the application being lost. The application servers are behind router G and the end users are behind router H, which design change should be made to prevent this packet-loss problem from reoccurring?

- A. Use asymmetric carrier delay timer
- B. Deploy all links as point-to-point
- C. Redesign the network as a flat level 2
- D. Optimize the LSP/SPF timers to send LSPs immediately after a topology change
- E. Enable the advertisement of the overload bit for a specific amount of time after reload on router B

Answer: E

NEW QUESTION 19

A regional ISP is running MPLS TE. These tunnels are configured manually using paths. Which technology centralizes the traffic engineering decisions to reduce operational complexity?

- A. BGP Link State
- B. DiffServ-TE
- C. TE autobandwidth
- D. Shared Risk link Group

Answer: C

NEW QUESTION 21

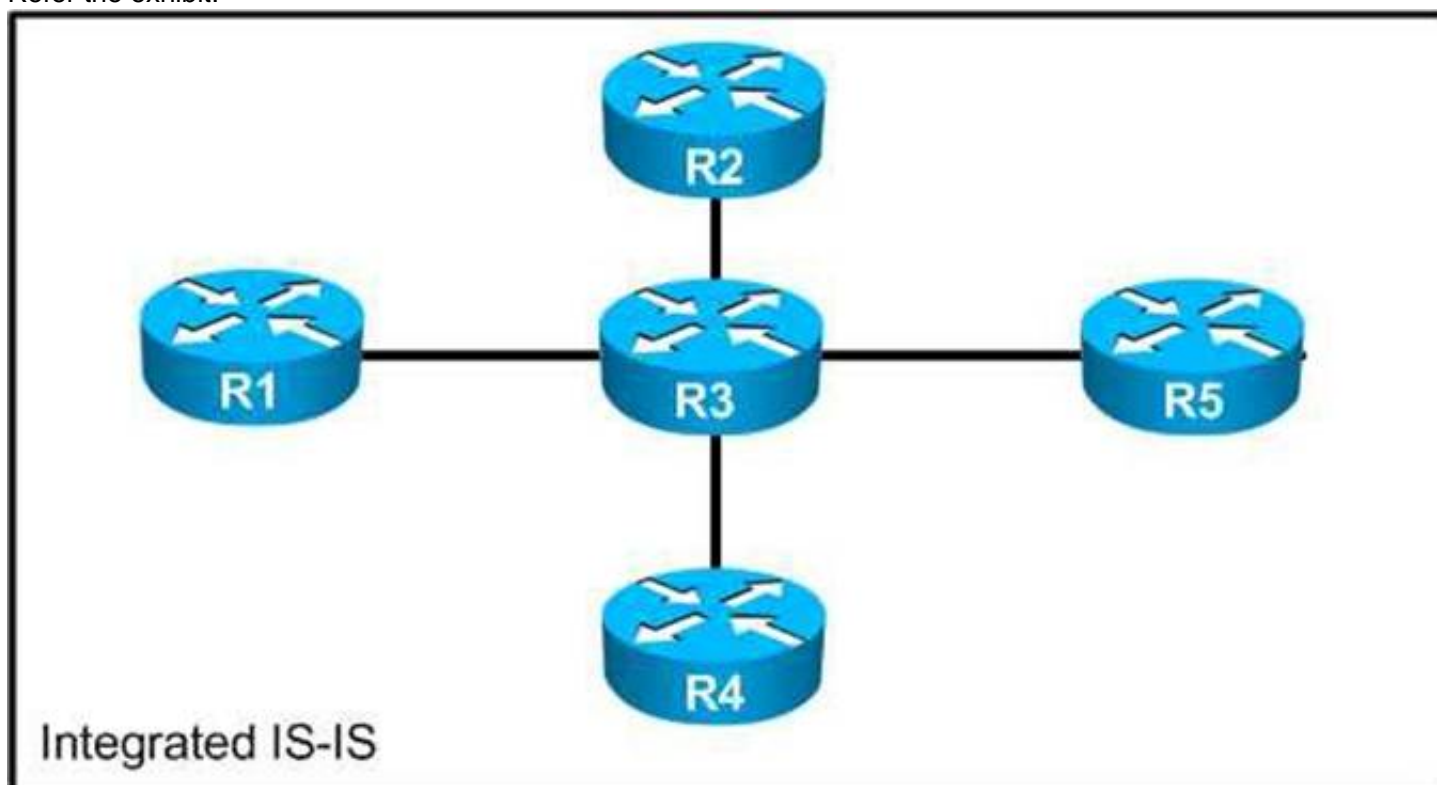
Which reason prevents a designer from using a GDOI-based VPN to secure traffic that traverses the Internet?

- A. Enterprise host IP addresses are typically not routable.
- B. GDOI is less secure than traditional IPsec.
- C. Network address translation functions interfere with tunnel header preservation.
- D. The use of public addresses is not supported with GDOI.

Answer: C

NEW QUESTION 25

Refer the exhibit.



You have designed a IPv6 migration plan, and now you need to determine the impact on the existing IPv4 network. Which is likely to happen when you enable IPv6 routing on the link between R3 and R2, starting at R3?

- A. R3 advertises the link from R3-R2 to R1, R4 and R5 only.
- B. R2 receives an IPv6 default route from R3.
- C. Only R3 and R2 have IPv4 and IPv6 reachability.
- D. Loopback reachability between all routers for IPv4 is lost.
- E. All routers except R2 are reachable through IPv4.

Answer: D

NEW QUESTION 26

In a routed access hierarchical campus design, the access-to-distribution Layer 2 uplink trunks are replaced with Layer 3 point-to-point routed links. Why is it recommended that VLANs are confined on a single access switch rather than span across multiple access switches?

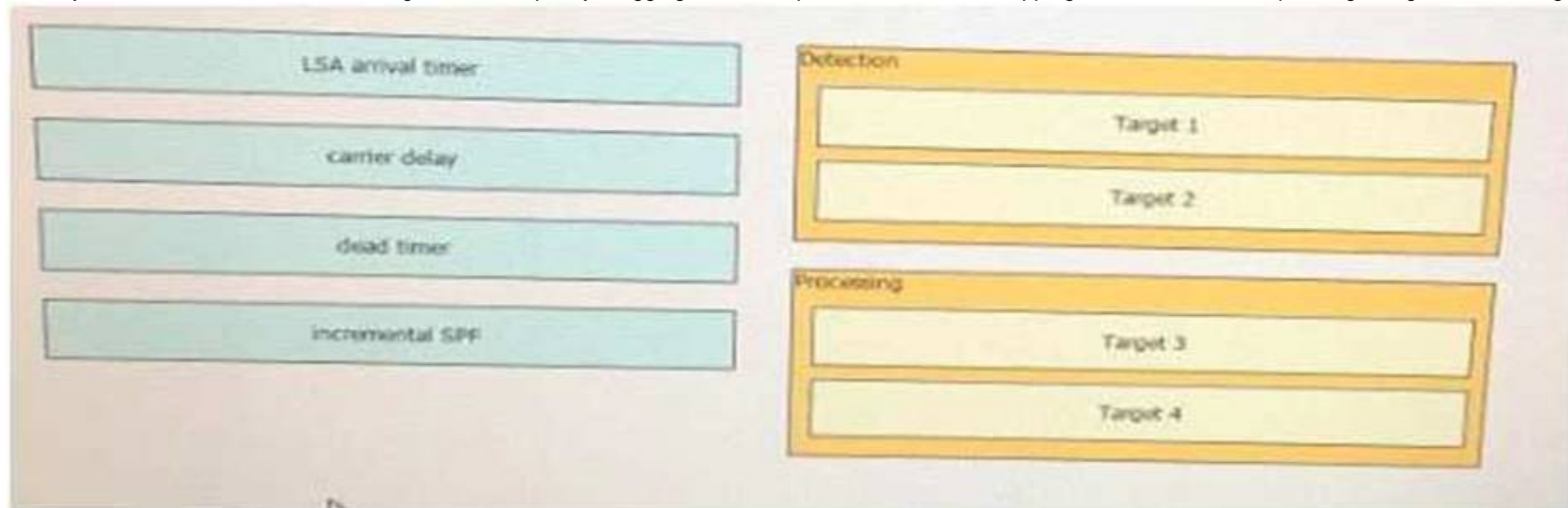
- A. to allow for better convergence time
- B. to prevent the occurrence of Layer 2 loops
- C. to allow for fault isolation
- D. to prevent routing black holes

Answer: D

NEW QUESTION 31

DRAG DROP

Classify the OSPF Fast Network Convergence technique by dragging the techniques on the left and dropping them into the corresponding categories on the right.



- A. Mastered
- B. Not Mastered

Answer: A

Explanation:

Detection: carrier delay, dead timer

Processing: LSA arrival timer, incremental SPF

NEW QUESTION 35

Which option is a design consideration when using routers in a distributed hardware architecture?

- A. Routing information is stored in the RIB and the FIB makes forwarding decisions as programmed on the line card hardware
- B. After a link failure occurs in the core, the RIB continues to forward the traffic while FIB convergence is in progress
- C. BGP routes are stored in the RIB and IGP routes are stored in the FIB
- D. IP routes are stored in the RIB and MPLS labels are stored in the FIB

Answer: A

NEW QUESTION 38

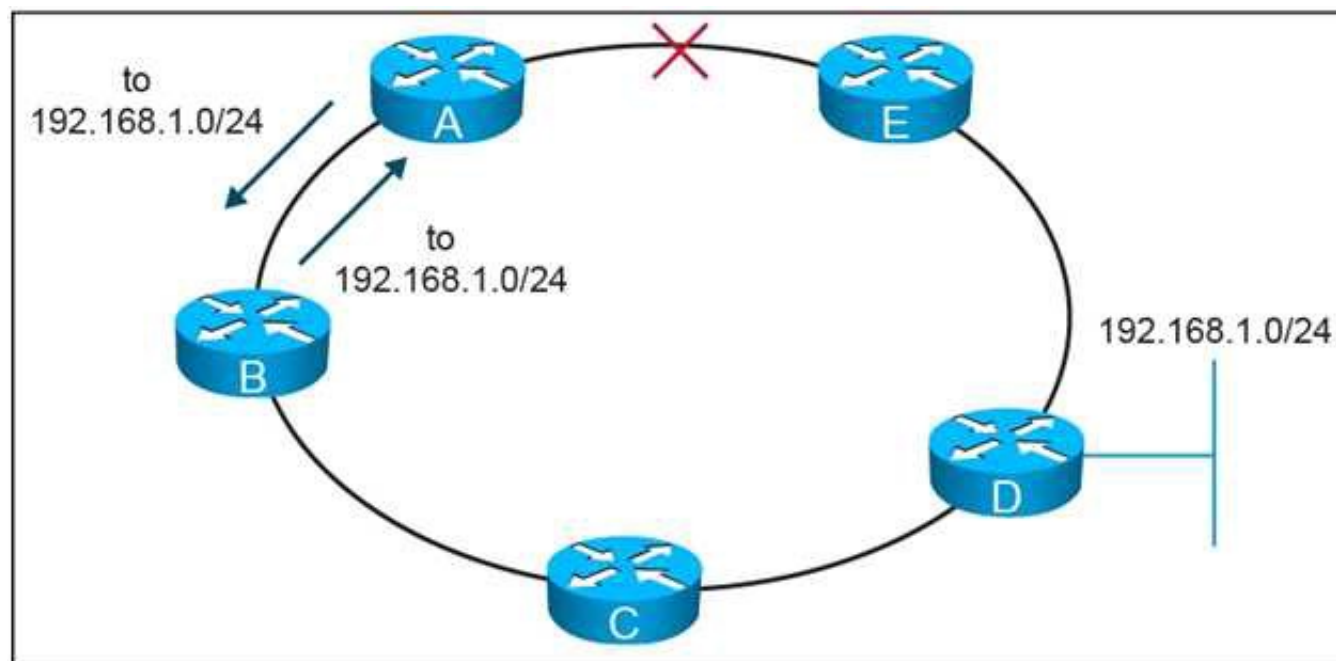
Which two functions are performed at the core layer of the three-layer hierarchical network design model? (Choose two).

- A. Fault isolation
- B. Qos classification and marking boundary
- C. Fast transport
- D. Reliability
- E. Load balancing

Answer: CD

NEW QUESTION 40

Refer to the exhibit.



On this MPLS-based network ring, links have failed between router A and router E. These failures formed microloops while the network converged, when A forwarded traffic to B but B forwards it back to

- A. Which technology is the simplest solution to avoid microloops without enabling a new protocol in the network?
- B. TE Fast ReRoute
- C. IP Fast ReRoute
- D. Loop-Free Alternate
- E. Remote Loop-Free Alternate

Answer: D

NEW QUESTION 43

You are designing an optical network. Your goal is to ensure that your design contains the highest degree of resiliency. In which two ways should you leverage a wavelength-switched optical network solution in your network design? (Choose two.)

- A. a wavelength-switched optical network guarantees restoration based strictly on the shortest path available
- B. a wavelength-switched optical network provides fault tolerance for single failures only
- C. a wavelength-switched optical network takes linear and nonlinear optical impairment calculation into account
- D. a wavelength-switched optical network assigns routing and wavelength information
- E. a wavelength-switched optical network eliminates the need for dispersion compensating units in a network

Answer: CD

NEW QUESTION 46

You are implementing a one-to-many multicast solution for a large service provider network. Which technology offers optimal routing of multicast traffic?

- A. PIM sparse mode
- B. PIM SSM
- C. Anycast RP
- D. MSDP
- E. Bidirectional PIM.

Answer: B

NEW QUESTION 47

Which two components are the responsibility of the customers in a platform as a Service offering? (Choose two)

- A. Applications
- B. Infrastructure connectivity
- C. Hardware
- D. Data
- E. APIs

Answer: AD

NEW QUESTION 49

An ISP provides VoIP and internet services to its customers. For security reasons, these services must be transported in different MPLS Layer 3 VPNs over the ISP core network. The customer CEs do not have the ability to segment the services using different VLANs and have only one uplink interface that does not support VLAN tagging. How should you design the network to ensure that VoIP traffic that is received from the CE goes in the VoIP VPN, and that Internet traffic goes into the Internet VPN on the ISP PE devices?

- A. Use a secondary interface IP address to differentiate between VoIP and Internet traffic
- B. Extend the Layer 3 VPN toward the CE
- C. Enable NBAR on the PE to direct the traffic into the correct VRF
- D. Use a subinterface on the PE for each service, VoIP and Internet, with different subnets
- E. Use policy-based routing to direct traffic into the correct VRF

Answer: E

NEW QUESTION 53

How can a network designer reduce the amount of LSA flooding occurring in a large, single area fully-meshed OSPF topology?

- A. Implemented passive OSPF interfaces on the routers not participating on the DR/BDR election.
- B. Use access control lists to control outbound advertisements.
- C. Ensure DR and BDR routers are placed optimally in the topology.
- D. Place all point-to-point links in their own dedicated areas.

Answer: C

NEW QUESTION 56

Your customer asks you to assist with their traffic policy design. They want to guarantee a minimum amount of bandwidth to certain traffic classes. Which technique would you advise them to implement?

- A. Modular QoS CLI
- B. committed access Rate
- C. policy-based routing
- D. traffic shaping

Answer: A

NEW QUESTION 60

Which two design aspects should a metro service provider consider when planning to deploy REP for his backbone? (Choose two.)

- A. Two REP segments can be connected redundantly at two points, one connection will be blocked as per the STP defined in IEEE 802.1d.
- B. UDLD can be enabled on REP interfaces to detect unidirectional failures.
- C. The guaranteed convergence recovery time is less than 50 ms for the local segment.
- D. A REP segment is limited to a maximum of seven devices.
- E. VLAN load balancing for optimal bandwidth usage is supported in any REP segment.

Answer: BE

NEW QUESTION 64

Which mechanism should be added to a network design to identify unidirectional Spanning Tree Protocol failures through BPDU loss?

- A. Root guard
- B. BPDU guard
- C. Loop guard
- D. UDLD

Answer: C

NEW QUESTION 65

A company would like to distribute a virtual machine (VM) hosting cluster between three data centers with the capability to move VMs between sites. The connectivity between data centers is IP only and the new design should use the existing WAN. Which Layer 2 tunneling technology do you recommend?

- A. ATOM
- B. L2TPv3
- C. OTV
- D. VPLS

Answer: C

NEW QUESTION 66

At which two networks points is route summarization supported? (Choose two)

- A. At EIGRP AS boundaries
- B. At EIGRP interface boundaries
- C. At OSPF virtual-link boundaries
- D. At EIGRP are boundaries
- E. At OSPF area boundaries
- F. At EIGRP stub interface boundaries

Answer: BE

NEW QUESTION 68

You are consultant network designer for a large GET VPN deployment for a large bank with International coverage. Between 1800 and 2000 remote locations connect to the central location through four hubs using an MPLS backbone and using two keys servers. The bank is concerned with security and replay attacks. Which two actions should you use to tune the GET VPN to meet the bank requirements? (Choose two)

- A. Increase the cryptographic key size.
- B. Replace unicast rekey with multicast rekey.
- C. Reduce the SAR clock interval duration
- D. Increase the TEK and KEK lifetime.
- E. Reduce the Dead Peer Detection periodic timer.

Answer: BC

NEW QUESTION 69

The enterprise customer ABC Corp will deploy a centralized unified communications application to provide voice, and instant messaging to their branch offices. Some of the branch offices are located in remote locations and are connected via a 1.5 Mb/s Layer 3 VPN connection. Which two ways are the most cost-effective to ensure that this new application is implemented properly? (Choose two)

- A. Use a low bitrate codec such as G 711
- B. Set voice activity detection to avoid sending packets when the conversations is silent
- C. Enable VRF-Lite on the CE router to create a separate voice VRF
- D. Set LFI on the WAN connections to interleave the small voice packets with the large data packets
- E. Set WAN optimization on the CE router to compress the voice packets for improved bandwidth utilization and performance
- F. Use a low bitrate codec such as G 729

Answer: BF

NEW QUESTION 74

In an OSPF network, users in a particular OSPF non-backbone area are complaining about slow access speeds to a shared corporate resource in another OSPF area. Traceroutes show that the users are taking a suboptimal default route to the destinations. Which solution will improve access speed?

- A. Make the area totally stubby so that the default can be followed along the best path
- B. Create a virtual link between the areas so that traffic can shortcut directly between them
- C. Leak specific summaries on the ABRs for the remote subnets in addition to the default
- D. Implement policy routing to channel the traffic in the optimal direction

Answer: C

NEW QUESTION 77

You are solving a design failure on a massive Hadoop cluster network that has an application with TCP incast behavior (also known as TCP Throughput collapse) affecting its many-to-one communications with packet loss at the last-hop network device. Which metric must be measured to ensure that the network provides the best performance for this application?

- A. Availability
- B. Bandwidth utilization
- C. Jitter values
- D. Buffer utilization

Answer: D

NEW QUESTION 80

You are designing a data center migration from one location to another, which requires all existing VLANs spanned to the new data center to maintain host IP addressing. Two temporary Gigabit Ethernet circuits are available to extend the VLANs at Layer 2 to the location as trunk links between core switches in each location. Which solution provides maximum fault isolation between the two data centers to ensure a Layer 2 issue in one data center does not affect the other during the migration?

- A. Perform BPDU filtering over the trunk links
- B. Enable STP PortFast on host ports within each data center
- C. Run the dual links as multichassis Etherchannel trunk between core switches within each location
- D. Perform HSRP filtering over the trunk links to maintain active HSRP gateways within each data center for each VLAN

Answer: A

NEW QUESTION 85

A large enterprise network has two data centers and a WLAN edge with a large hub-and-spoke network. The complete network is configured as a single OSPF area, and spoke routers are connected to unreliable WAN links. Which two changes should you make to deploy LSA on the spoke routers? (Choose two)

- A. Place spoke routers in stub areas
- B. Make the hub routers ABR
- C. Make the hub routers ASBR
- D. Place spoke routers in totally stubby areas
- E. Keep the spoke routers in normal areas

Answer: BD

NEW QUESTION 90

A customer has a DMVPN network with EIGRP as the overlay protocol. EIGRP timers cannot be shortened, yet the customer requires the detection of lost connectivity between neighbors in less than three seconds. Which action achieves this requirement?

- A. Adjust the GRE keepalive timers

- B. Enable BFD
- C. Deploy IPsec dead peer detection
- D. Adjust the NHRP timers.

Answer: B

NEW QUESTION 92

When designing a network .Which method can be used to control the exit point for traffic an autonomous system, at the layer 3 control plane?

- A. Prepending AS path.
- B. Tuning the multi-exit discriminator.
- C. Setting the site of Origin extended community.
- D. Tuning the metric of the under-tying IGP.

Answer: D

NEW QUESTION 93

Which two general SDN characteristics? (Choose two)

- A. Southbound interfaces are interfaces used between the control plane and the date plane
- B. OpenFlow is considered one of the first Northbound APIs used by SDN controllers
- C. Northbound interfaces are open interfaces used between the control plane and the data plane
- D. The separation of the control plane from the data plane
- E. OVSDB is an application database management protocol

Answer: AD

NEW QUESTION 96

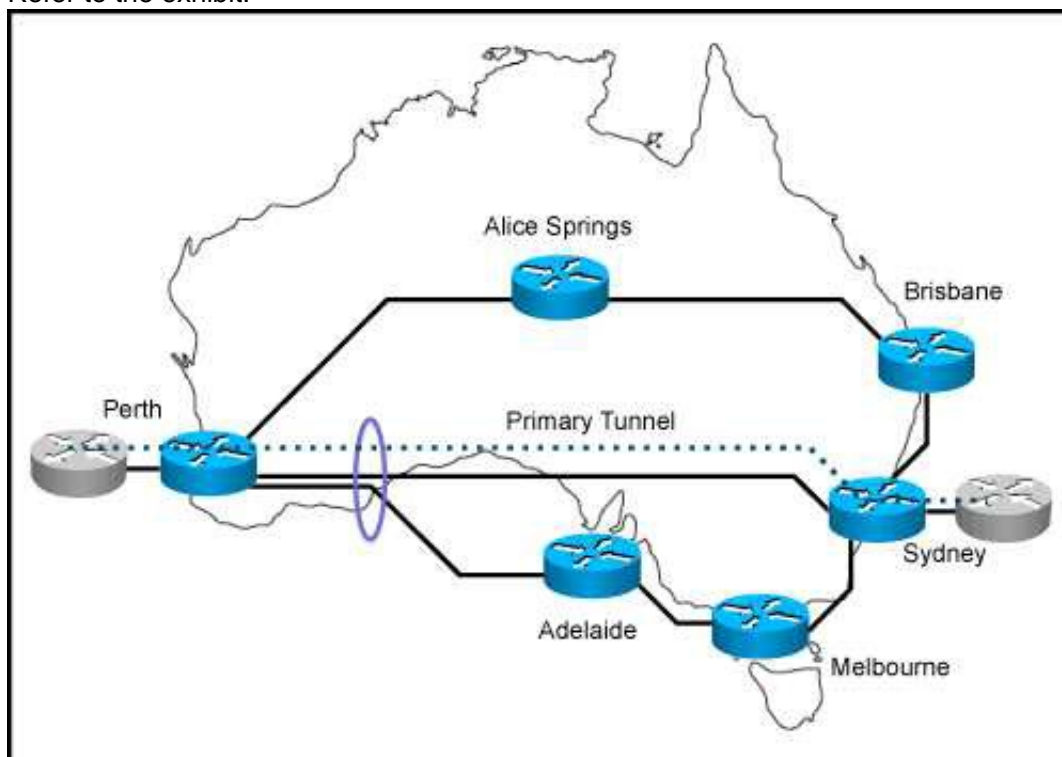
A switched network is being designed to support a manufacturing factory. Due to cost constraints, fiber-based connectivity is not an option. Which design allows for a stable network when there is a risk of interference from the manufacturing hardware in use on the factory floor?

- A. Design the network to include UDLD to detect unidirectional links and take them out of service.
- B. Design the network to include Ether Channel bundles to prevent a single-link failure from taking down a switch interconnection point.
- C. Design the network to include loop guard to prevent a loop in the switched network when a link has too much interference.
- D. Design the network to include Backbone Fast on all devices to accelerate failure convergence times.

Answer: B

NEW QUESTION 97

Refer to the exhibit.



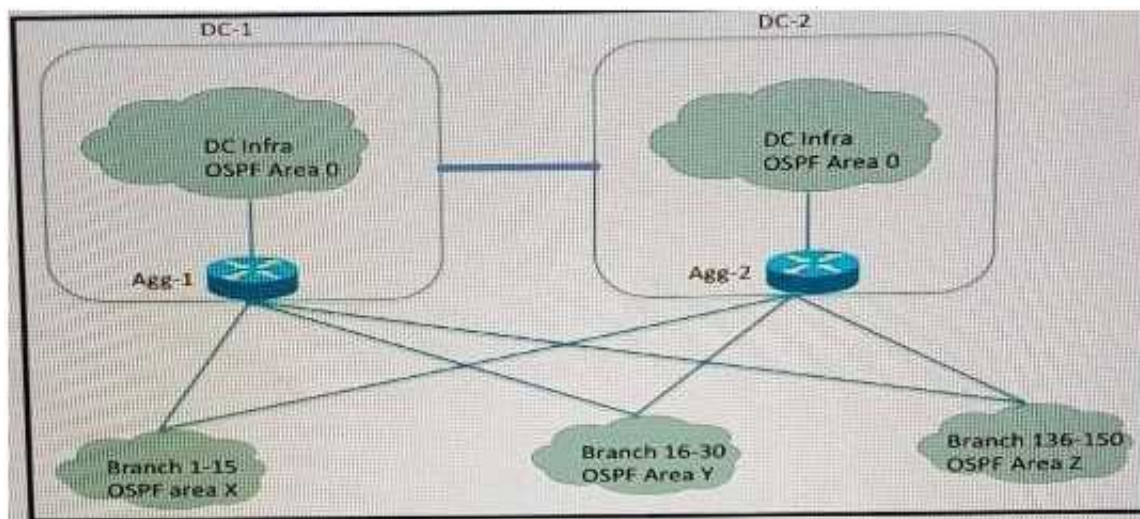
You are designing MPLS-TE for this network. The links from Perth to Sydney and from Perth to Adelaide share the same optical fiber in one given segment. Which feature should you implement to eliminate the risk that a backup tunnel is installed over the same optical fiber as the primary one?

- A. Shared Risk Link Groups
- B. MPLS-TE Path Protection
- C. MPLS-TE auto-tunnel backup
- D. MPLS-TE Link protection

Answer: A

NEW QUESTION 101

Refer to the exhibit



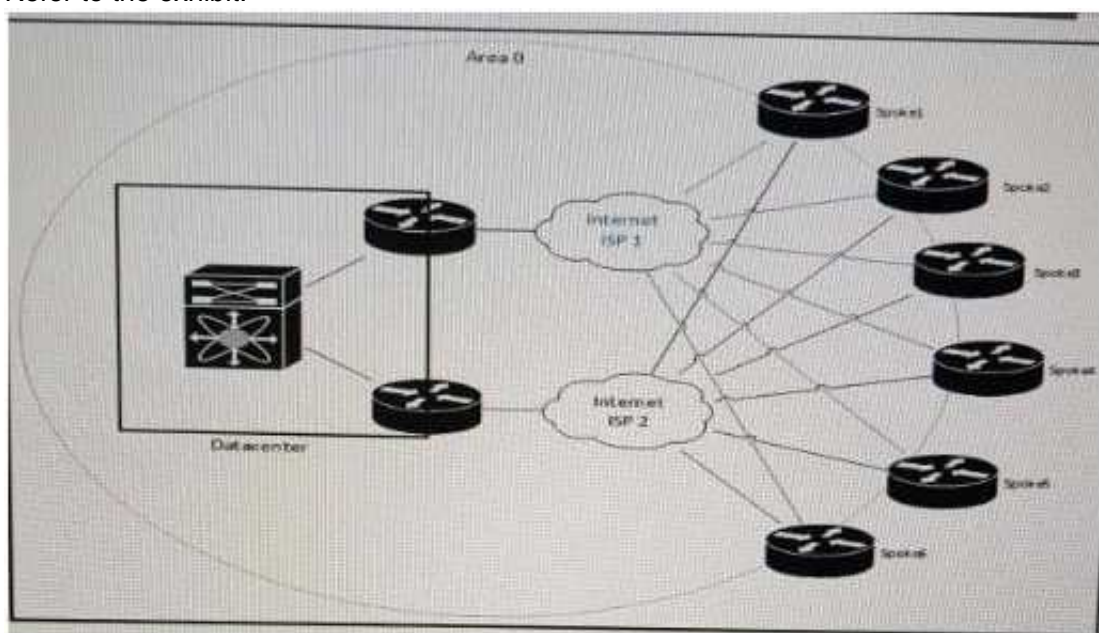
company xyz has 150 branch location across the U.S. Each branch is connected to two aggregation router one router in each data center. The network is configured with Multiple OSPF with multiple OSPF areas and the aggregation router are ABRs. A requirement is to keep an optimal path to the data centers and at the same time reduce the LSA propagation and SPF recomputation during a change in any part of the network. Which design elements should be included on the aggregation router?

- A. OSPF NSSA
- B. distribute lists
- C. OSPF summarization
- D. OSPF totally stubby area

Answer: C

NEW QUESTION 105

Refer to the exhibit.



You must review this single OSPF area, DMVPN network because the company has noticed a few area 0 convergence and stability issues. Also, traffic destined to the data center from one of the spokes as the next hop on the path. The company prefers that all traffic destined to the data center uses the least amount of hops. Which solution resolves these issues with the minimum amount of changes on the network?

- A. Migrate from OSPF to static routes between the hub routers and the spoke routers and deploy IP SLA for route health checks
- B. Migrate from OSPF to EIGRP between the hub routers and the spoke routers
- C. Modify OSPF cost metrics on all backup links
- D. Create areas between each hub and their spoke routers, to ensure that the hub routers become DRs

Answer: C

NEW QUESTION 108

You are designing an IPv4 any source multicast redundancy solution. Which technology ensures the quickest RP convergence?

- A. Bootstrap router
- B. MSDP anycast RP
- C. Auto-RP
- D. Embedded RP

Answer: B

NEW QUESTION 109

Which two options are design considerations when introducing FCoE into an existing network? (Choose two)

- A. The FCoE QoS markings may overlap with call signaling QoS markings
- B. Optical cabling is needed to transmit FCoE traffic between a server and its directly connected Ethernet switch
- C. The existing network must support a MTU of 3280 bytes
- D. Twinaxial cabling can be used to transmit FCoE traffic between a server and its directly connected Ethernet switch, if it is less than 10 meters
- E. All the servers in the data center must be retrofitted with converged Network Adapters

Answer: AE

NEW QUESTION 113

Which three network management requirements are common practices in network design? (Choose three)

- A. Ensure that all network devices have their clocks synchronized.
- B. Collect SNMP poll information for future regression analysis.
- C. Capture both ingress and egress flow-based packets, while avoiding duplication of flows.
- D. Look at average counters instead of instantaneous counters for inconsistent and bursty KPIs, such as CPU utilization and interface utilization.
- E. Validate data plane health, and application and services availability, with synthetic traffic.

Answer: ABD

NEW QUESTION 117

You are designing a solution to connect a primary data center to a disaster recovery site, The hosted applications will be web and email servers that are provided through a virtualized environment. Which connectivity technology should you consider for this design?

- A. L2TPV3.
- B. VPWS.
- C. Point-To-Point GRE tunnels.
- D. VPLS.

Answer: A

NEW QUESTION 122

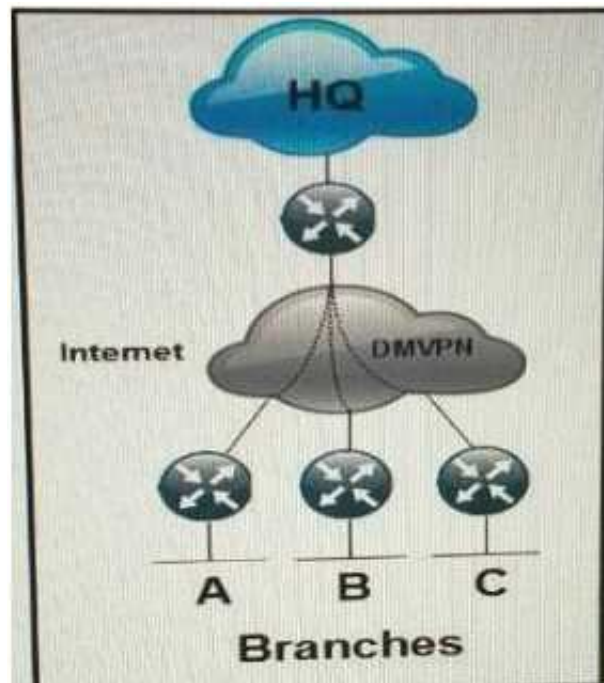
A service provider is designing a new backbone based on an IGP and MPLS what are two valid reasons for implementing MPLS-TE as well? (Choose two)

- A. MPLS-TE is required to reroute traffic within less than 1 second in case of a link failure inside the backbone
- B. MPLS-TE can detect and react to neighbor failures faster than IGPs can
- C. MPLS-TE is required to route different MPLS QoS Service classes through different paths
- D. MPLS-TE is required to create backup paths independently from the IGP
- E. MPLS-TE is a prerequisite for implementing RSVP in the backbone

Answer: CD

NEW QUESTION 127

Refer to the exhibit.



Which routing solution is the most scalable to connect the branches to the HQ and to connect the branches together over the internet using DMVPN?

- A. EIGRP
- B. EIGRP with the branch routers setup as stubs
- C. OSPF with each branch router as an ABR
- D. IS-IS L2 in all locations
- E. OSPF Area 0 in all locations

Answer: B

NEW QUESTION 132

Your customer recently acquired a company with a national WAN of 750 locations consisting of MPLS VPN-based sales, Internet-based sites and sites with direct links to regional hub sites. The existing network has MPLS VPN-based sites. Which solution ensure security and encryption across all sites to meet an audit requirement?

- A. Implement a hierarchical DMVPN-based hub-and-spoke network with IPsec encryption
- B. Migrate newly acquired sites to the MPLS VPN-based service of the parent company
- C. Implement a GETVPN-based solution across all sites with selective traffic encryption
- D. Implement a GETVPN-based solution across all sites with redundant key servers

Answer: A

NEW QUESTION 136

Which three processes are part of the ITILv3 Service Operation? (Choose three)

- A. Release and deployment management
- B. Problem management
- C. Incident management
- D. Event management
- E. Service-level management
- F. Change management

Answer: BCD

NEW QUESTION 140

You must make IGP redesign recommendations for a client that has old equipment, with low CPU power and memory, that they do not have budget replace. They are very concerned about CPU load on routers. They are using IS-IS as the IGP in a single I1 area and all routers are connected to each other with point-to-point links. Which method do you recommend to reduce or limit CPU overhead caused by IS-IS?

- A. Use mesh groups to limit flooding of LSAs
- B. Implement wide style metrics for IS-IS on all routers
- C. Select a router to act as a pseudowire to limit topology synchronization
- D. Divide the router into multiple areas and implement address summarization

Answer: A

NEW QUESTION 145

What two options are significant drivers for 5G in IoT networks? (Choose two)

- A. Energy Efficiency
- B. Lower Latency
- C. Mass Connectivity
- D. Programmability
- E. Higher data rates

Answer: BC

NEW QUESTION 150

Which two options are IoT use cases that require the low-latency and high reliability that 5G networks provide? (Choose two)

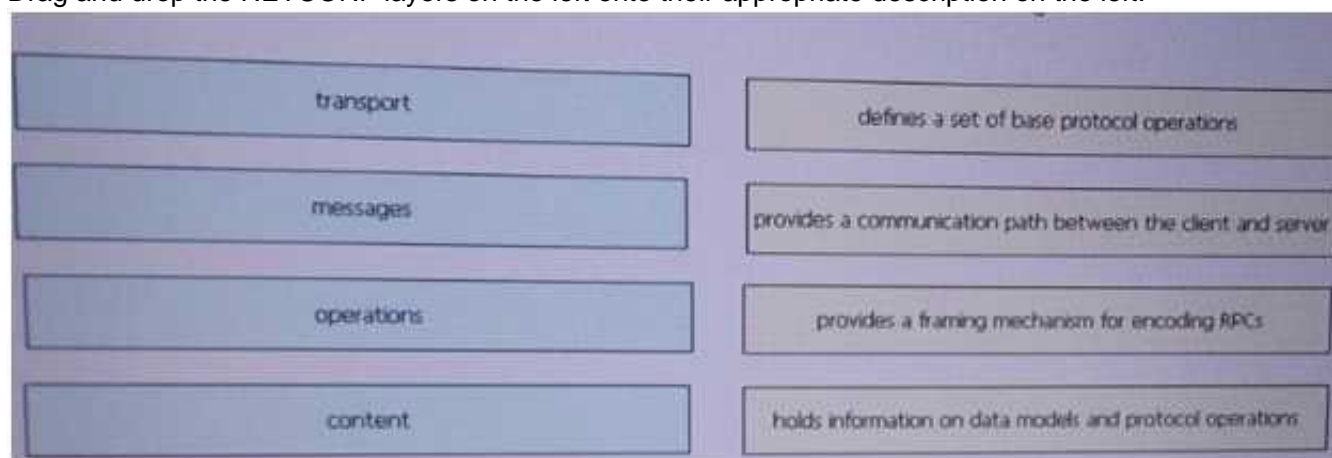
- A. Sports and Fitness
- B. Smart Home
- C. Automotive
- D. Smart Cities
- E. Industrial Automation
- F. Health and wellness

Answer: CE

NEW QUESTION 154

DRAG DROP

Drag and drop the NETCONF layers on the left onto their appropriate description on the right.



- A. Mastered
- B. Not Mastered

Answer: A

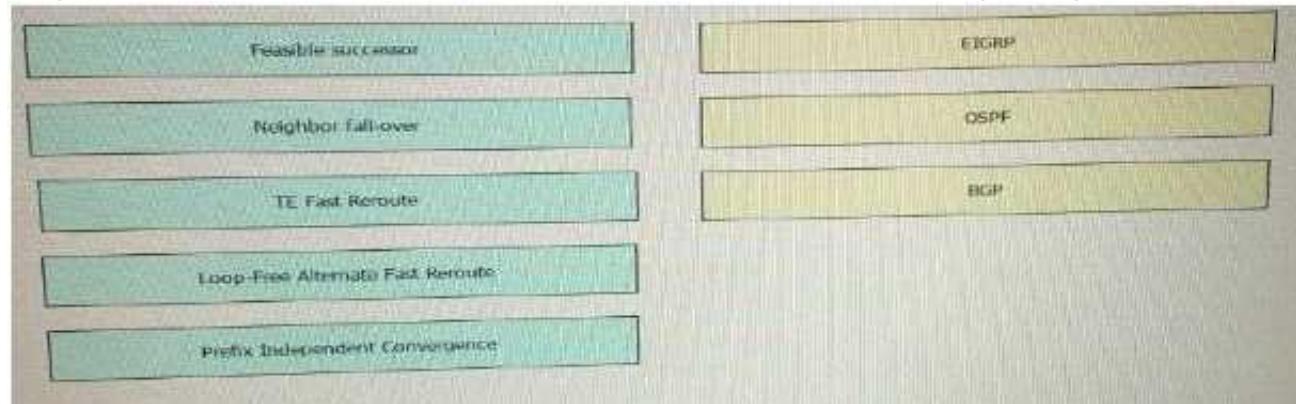
Explanation:



NEW QUESTION 158

DRAG DROP

Drag the fast Reroute mechanism on the left and drop it onto the corresponding routing protocol on the right



- A. Mastered
- B. Not Mastered

Answer: A

Explanation:

A, D, E

NEW QUESTION 161

Which two options are potential problems with route aggregation? (Choose two)

- A. Maintaining host IP addresses during migrations
- B. Route flapping
- C. Suboptimal routing
- D. Topology hiding
- E. Asymmetric routing
- F. Prefix hijacking

Answer: CE

NEW QUESTION 165

A DMVPN network is being deployed for 10 branch sites to connect to the central headquarters over the Internet. Each branch site connects to the internet via a 1.5 Mb/s ADSL line, and the headquarters connects to the Internet over a 100Mb/s circuit limited to 20 Mb/s by the service provider. Which QoS mechanism if any, do you recommend at the headquarters location?

- A. Rate-limiting the 100 Mb/s circuit to 20 Mb/s
- B. Applying hierarchical QoS with parent policy for the overall circuit and child policy for the spokes
- C. Traffic shaping the 100 Mb/s circuit to 20 Mb/s
- D. QoS is not required in this instance due to maximum traffic being received by the branches being 15 Mb/s

Answer: B

NEW QUESTION 169

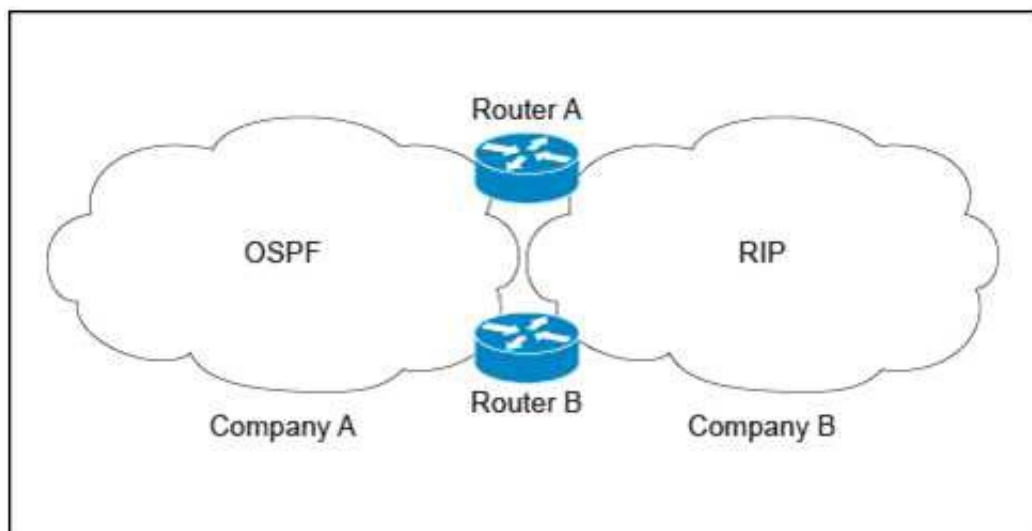
A customer requests that you determine how much of their remote branch traffic into a central data center is related to a call manager that resides in the data center. Which solution do you recommend?

- A. Enable NetFlow on branch routers
- B. Enable netFlow on central data center routers
- C. Perform SNMP polling of central data center routers
- D. Perform SNMP polling of branch routers
- E. Create an ACL on the local call manager switch with logging enabled
- F. Span traffic from the switch port on the call manager to a data analyzer

Answer: B

NEW QUESTION 172

Refer to the exhibit.



Company A is running a single-area OSPF, and Company B is running RIP as the IGP with no overlapping IP address spaces. Company A has just acquired Company B and both networks must be merged. Which three design components are recommended to guarantee connectivity and redundancy between the two networks? (Choose three.)

- A. Enable mutual redistribution between OSPF and RIP on one border router.
- B. Enable mutual redistribution between OSPF and RIP on Router A and Router B using route tags.
- C. Increase the administrative distance to 130 for the OSPF external prefixes on Router A and Router B.
- D. Implement an ACL on Router A and Router B to prevent OSPF external routes from being installed in the OSPF database.
- E. Filter external routes on Router A and Router B based on route tags.

Answer: BCE

NEW QUESTION 173

Which two options are two advantages of summarizing networks at the aggregation layer rather than at the core? (Choose two.)

- A. It prevents the core from having unnecessary routes.
- B. It no longer needs a core layer.
- C. It prevents black hole routing.
- D. It avoids network-wide impact upon VLAN changes local to the aggregation devices.
- E. it allows for optimal routing

Answer: AD

NEW QUESTION 174

The service provider that you work for wants to offer IPv6 internet service to its customers without upgrading all of its access equipment to support IPv6, which transition technology do you recommend?

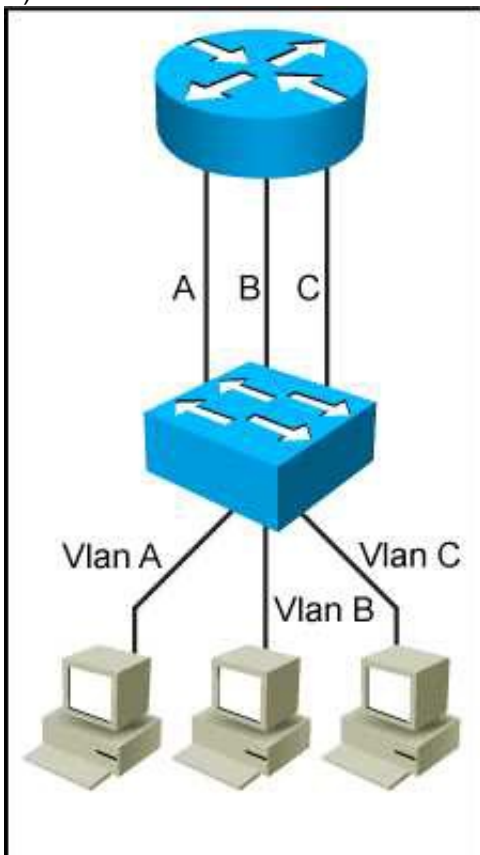
- A. NAT64
- B. CGN
- C. Dual-stack CPE
- D. 6RD

Answer: D

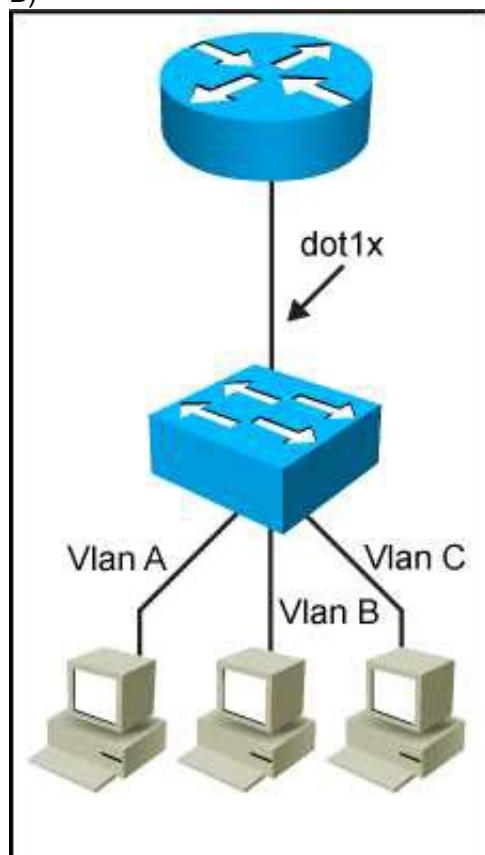
NEW QUESTION 179

Which network topology is characterized by a link fate-sharing situation?

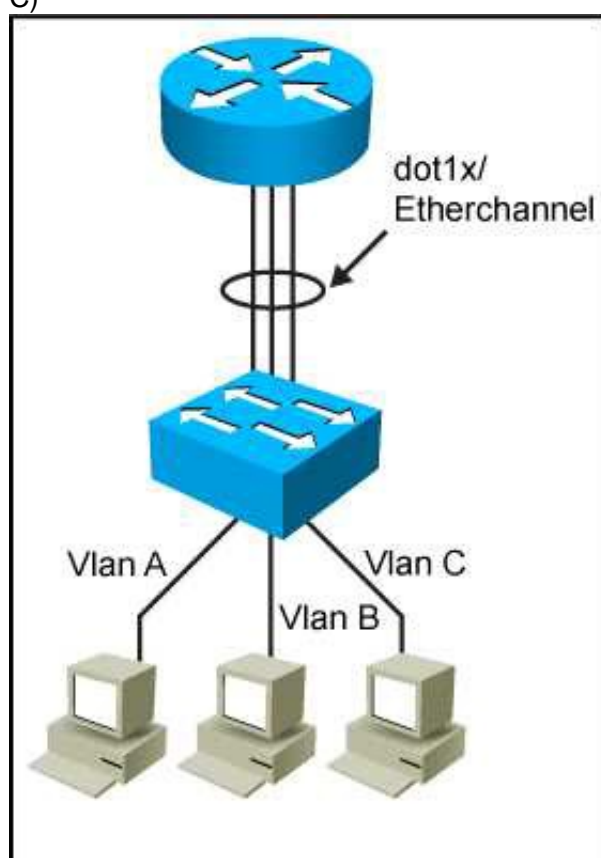
A)



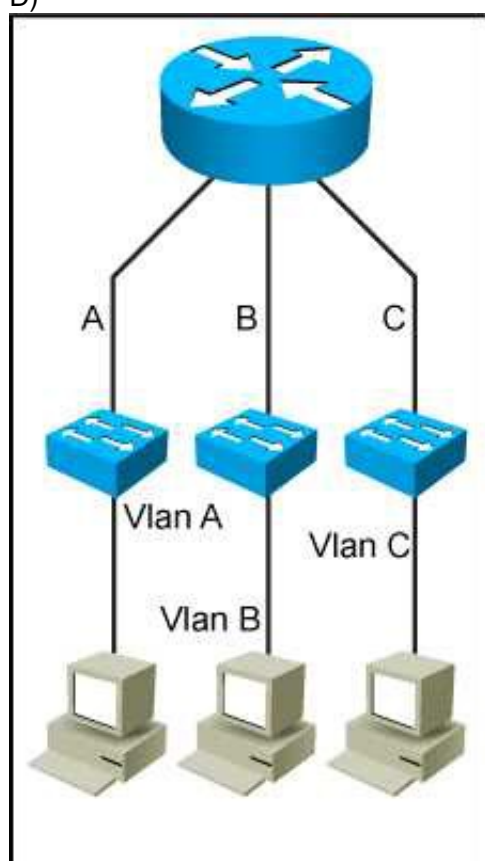
B)



C)



D)



- A. Exhibit A
- B. Exhibit B
- C. Exhibit C
- D. Exhibit D

Answer: B

NEW QUESTION 181

You are reviewing a new data center design for a customer. They chose to leverage a tunnel-based overlay technology for quick deployment and multitenant security. Which design concern can affect the availability across the data center?

- A. Nonoverlapping IP address space between the overlay networks
- B. MTU size on the underlay links
- C. Review of common paths on the underlay links
- D. Proper placement of STP root bridge in overlay networks

Answer: B

NEW QUESTION 185

What is a design aspect regarding multicast transport for MPLS Layer 3 VPNs using the Rosen Draft implementation?

- A. LDP is the multicast control plane protocol.
- B. Multicast traffic is forwarded over GRE tunnels.
- C. Multicast traffic is forwarded over LDP or RSVP signaled LSPs.
- D. Using the MDT SAFI in BGP ensures that PIM can be disabled in the core.

Answer: B

NEW QUESTION 190

Which three items do you recommend for control plane hardening of an infrastructure device?
(Choose three)

- A. To enable unused services
- B. Warning banners
- C. Routing protocol authentication
- D. Control Plane Policing
- E. Redundant AAA servers
- F. SNMPv3

Answer: CDF

NEW QUESTION 194

Which option reduces jitter in a VoIP network?

- A. Deploy WRED
- B. Deploy call Admission Control
- C. Adjust the playout delay buffer at the receiver
- D. Increase the bandwidth of the links

Answer: C

NEW QUESTION 197

Which option describes the fundamental design differences between an IP-based network design and a SAN-based?

- A. An IP-based design has redundant connectivity in the fabric and high amounts of east-west traffic, whereas a SAN-based design uses redundancy from a dual-attached host, which uses separate fabrics and has very little east-west traffic
- B. An IP-based design has redundancy from the host and high amounts of east-west traffic, whereas a SAN-based design uses redundancy in the fabric and very little east-west traffic
- C. An IP-based design has redundant connectivity in the fabric and high amounts of east-west traffic, whereas a SAN-based design uses zoning based redundancy which uses separate fabrics and has very little east-west traffic
- D. An IP-based design has redundant connectivity in the fabric and very little east-west traffic, whereas a SAN-based design uses redundancy in the host, which uses separate fabrics and has high amounts of east-west traffic

Answer: A

NEW QUESTION 201

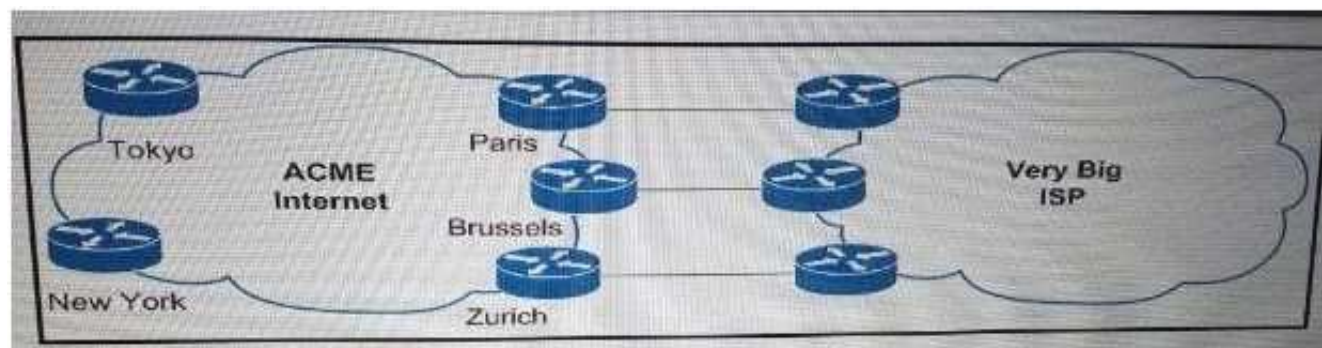
Which options do you investigate first when designing fast network convergence?

- A. Routing protocol database size
- B. MTU of the involved interfaces
- C. Link speed between sites
- D. Supported Layer 3 failure detection mechanism

Answer: D

NEW QUESTION 203

Refer to the exhibit.



Service provider ACME Internet just added a 100 GB/s peering in Paris that it wants to use by default for outbound traffic to Big ISP. Which routing policy achieves the desired outcomes?

- A. Use traffic engineering by injecting a preferred LOCAL_PREF attribute to routes advertised from Very Big ISP in Paris
- B. Apply an import policy in New York that adds a Weight attribute to routes learned from Very Big ISP via Paris
- C. Apply an export policy in Paris by applying a MED or community attribute with a preference that very Big ISP act upon
- D. Apply an import policy that filters longer prefixes than /24 in Brussels and Zurich

Answer: A

NEW QUESTION 206

Which two functions are performed at the distribution layer of the three-layer hierarchical network design model? (Choose two)

- A. Fast transport
- B. QoS classification and marking boundary
- C. Fault isolation
- D. Redundancy and load balancing
- E. Reliability

Answer: CD

NEW QUESTION 211

A retail company connects its 250 branches across the globe to the core using MPLS Layer 3 VPN. The company is planning to migrate its traditional telephony services to VoIP, in order to reduce the cost of international calls. What are the two primary concerns when implementing this migration? (Choose two)

- A. Jitter
- B. Call routing design
- C. SRST
- D. MTU
- E. Available bandwidth

Answer: AE

NEW QUESTION 215

Which open source message broker is in the Cisco Cloud Center?

- A. Apache kafka
- B. HornetQ
- C. RabbitMQ
- D. Fuse Message Broker
- E. Oracle Message Broker

Answer: C

NEW QUESTION 220

You are designing dual-homed active/active ISP connections from an enterprise customer for internet services, and you have recommended BGP between the customer and ISP. When three security mechanisms do you enable to secure the connection? (Choose three)

- A. uRPF in strict mode
- B. remote triggered black holes
- C. IDS
- D. GTSM
- E. Routing protocol authentication
- F. uRPF in loose mode

Answer: BEF

NEW QUESTION 223

You are redesigning a high-speed transit network due to congestion-related issues. Which congestion avoidance mechanism can you apply to the existing network?

- A. NBAR
- B. FIFO
- C. WRED
- D. Rate-limit
- E. Policy-Based Routing

Answer: C

NEW QUESTION 228

Which two control plane policer design options should you consider to achieve high availability?
(Choose two)

- A. Control plane policers require that adequate protocols overhead are factored in to allow protocol convergence
- B. Control plane policers are really needed only on externally facing devices
- C. Control plane policers can cause the network management systems to create false alarms
- D. Control plane policers are enforced in hardware to protect the software path, but they are hardware platform-dependent in terms of classification ability
- E. Control plane policers must be processes before a forwarding decision is made

Answer: DE

NEW QUESTION 231

Which effect of designing a Layer 2 network using the PortFast fast feature with PVST+ is true?

- A. It shuts down the port when receiving the superior BPDU
- B. It accelerates the network convergence on the trunk uplinks
- C. In combination with BPDU filtering, it causes the switch port to stay in the forwarding state
- D. It moves the switch port directly to the forwarding state

Answer: D

NEW QUESTION 232

Your customer asked you to redesign there is-IS network to reduce to a minimum the number of adjacencies because the network has several routers running L1/L2 mode on the sme Ethernet segment. Which action do you recommend?

- A. Define only one router on the segment to be DIS
- B. Make the interface priority on the backup DIS lower than the primary DIS
- C. Change half the routers to L1 routers and half to L2 routers
- D. Change all routers to a single-level area

Answer: D

NEW QUESTION 233

In a design around fast convergence in case of a link failure, what is the justification for using a point-to-point OSPF network type on the Ethernet links between leaf-and-spine switches on a data center fabric?

- A. Link failure tears down neighbor relationships regardless of network type configured
- B. Type 1 LSAs are not generated on a point-to-point network type
- C. Adjacencies can be built faster without a DR/BDR on the segment
- D. The fabric memory requirements are significantly smaller than with a DR/BDR on each leaf and spine segment
- E. The point-to-point network type allows for NSF to be used in this design

Answer: C

NEW QUESTION 234

You are working on a network design plan for a company with approximately 2000 sites. The sites will be connected using the public Internet. You plan to use private IP addressing in the network design, which will be routed without NAT through an encrypted WAN network. Some sites will be connected to the Internet with dynamic public IP addresses, and these addresses may change occasionally. Which VPN solution will support these design requirements?

- A. GET VPN must be used, because DMVPN does not scale to 2000 sites.
- B. DMVPN must be used, because GET VPN does not scale to 2000 sites.
- C. GET VPN must be used, because private IP addresses cannot be transferred with DMVPN through the public Internet.
- D. DMVPN must be used, because private IP addresses cannot be transferred with GET VPN through the public Internet.
- E. GET VPN must be used, because DMVPN does not support dynamic IP addresses for some sites.
- F. DMVPN must be used, because GET VPN does not support dynamic IP addresses for some sites.

Answer: D

NEW QUESTION 236

Which three reasons to deploy an IDS sensor in promiscuous mode when you design a security solution are true? (Choose three.)

- A. Solution should be resistant to sensor failure.
- B. Solution should allow for stream normalization.
- C. Solution should not impact jitter and latency for voice traffic.
- D. Solution should allow for signature-based pattern matching.
- E. Solution should allow to deny packets inline.

Answer: ACD

NEW QUESTION 240

Assume that no multicast optimization is done on LAN switches A and B. Which two features can be used to optimize multicast traffic forwarding in this situation?
(Choose two.)

- A. Enable IGMP snooping querier on both switches.
- B. Configure a static MAC entry for the multicast server.
- C. Disable IGMP snooping on both switches.
- D. Disable the IGMP query election process.
- E. Enable PIM snooping on both switches.

Answer: AC

NEW QUESTION 241

Which two IoT use cases require the low latency and high reliability that 5G networks provide?

- A. Smart Home
- B. Automotive
- C. Health and Wellness
- D. Smart Cities
- E. Sports and Fitness

Answer: BC

NEW QUESTION 242

Which aspect is a significant disadvantage of containers?

- A. Security
- B. Time to deploy
- C. Inefficiency
- D. Reduced operational overhead
- E. Resource consumption

Answer: A

NEW QUESTION 246

Which two statements about VXLAN are true? (Choose two)

- A. VXLAN is a Cisco proprietary solution
- B. VXLAN is an encapsulation method used to create a Layer 3 overlay network
- C. VXLAN can be used to enforce Layer 2 isolation in a multitenant infrastructure
- D. VXLAN uses the Spanning Tree protocol for loop prevention
- E. VXLAN overcomes the 802.1Q virtual LAN address space limitation

Answer: BE

NEW QUESTION 249

A new video multicast application is deployed in the network. The application team wants to use the 239.0.0.1 multicast group to stream the video to users. They want to know if this choice will impact the existing multicast design. What impact will their choice have on the existing multicast design?

- A. Because 239.0.0.1 is a private multicast range, a flood of PIM packets that have to be processed by the CPU and hosts will be sent by the routers in the network.
- B. Because 239.0.0.1 is a private multicast range, the rendezvous point has to send out constant group updates that will have to be processed by the CPU and hosts.
- C. The multicast application sends too many packets into the network and the network infrastructure drops packets.
- D. The 239.0.0.1 group address maps to a system MAC address, and all multicast traffic will have to be sent to the CPU and flooded out all ports.

Answer: B

NEW QUESTION 251

VPLS is implemented in a Layer 2 network with 2000 VLANs. Which must be the primary concern to ensure successful deployment of VPLS?

- A. The underlying transport mechanism
- B. PE scalability
- C. Flooding is necessary to propagate MAC address reachability information
- D. VLAN scalability

Answer: C

Explanation:

[I think B not 100% sure]

NEW QUESTION 255

Which two conditions must be met for EIGRP to maintain an alternate loop-free path to a remote network? (Choose two)

- A. The Reported Distance from a successor is lower than the local Feasible Distance
- B. The Reported Distance from a successor is higher than the local Feasible Distance
- C. A feasible successor must be present
- D. The feasible Distance from a successor is lower than the local Reported Distance
- E. The feasibility condition do not need to be met

Answer: AC

NEW QUESTION 258

A company requires to connect two data center sites using a hub-and-spoke design. There are 2000 remote sites. It is required to transfer MPLS labeled packets over the public Internet using one router at each remote site. These MPLS labeled packets must be encapsulated inside IP packets. Which solution must be used to simplify this network design?

- A. GET VPN encrypts the MPLS packets with IPsec.
- B. DMVPN dynamically builds GRE tunnels with MPLS encapsulation inside.
- C. Site-to-site IPsec without GRE encapsulates the MPLS packets.
- D. PPPoE encapsulates the MPLS packets
- E. L2TPv3 encapsulated the MPLS packets

Answer: B

NEW QUESTION 259

A network has several routers running IS-IS L1L2 mode on the same Ethernet segment. Which action reduces to a minimum the number of IS-IS adjacencies in this segment?

- A. Define only the router on the segment to be DIS
- B. Change all routers connected to this segment to a single-level area
- C. Make the interface priority on the backup DIS lower than the primary DIS
- D. Change half the routers to be L1-only and other half to be L2-only on this segment

Answer: B

NEW QUESTION 262

Which solution suppress the effect of excessive interface flapping events on routing protocols?

- A. IP Event Dampening
- B. SPF Backoff
- C. Carrier Delay
- D. BFD

Answer: A

NEW QUESTION 265

Which mechanism does OSPF use to prevent loops in an MPLS Layer 3 VPNS environment?

- A. Sham link
- B. Down bit
- C. P-Bit
- D. Domain ID
- E. Routing bit

Answer: B

NEW QUESTION 267

When a multiprotocol routing environment is designed to have several routers redistributing among the routing domains, how can routing loops be avoided?

- A. By implementing spanning tree
- B. By activating split horizon
- C. By using the AS-path attribute
- D. By using route tags

Answer: D

NEW QUESTION 271

A large ISP is analysing which IGP meets these following requirements Network must be resilient against unstable MTU in one side of newly released transmission pieces of equipment Network must support MPLS traffic engineering solution for future use Which IGP must be selected and why?

- A. ISIS : in case MTU changes your TE tunnels keep the LSP stable
- B. OSPF: adjacency remains up even if MTU changes
- C. OSPF: in case MTU changes your TE tunnels keep the LSP stable
- D. ISIS: adjacency remains up even if MTU changes

Answer: D

NEW QUESTION 276

Which solution prevents microloops from be formed during network convergence time?

- A. RSVP-TE
- B. LFA
- C. Prefix suppression

D. RLFA

Answer: D

NEW QUESTION 279

Which feature must be part of the network design to wait a predetermined amount of time before notifying the routing protocol of a change in the path in the network?

- A. Transmit delay
- B. Throttle timer
- C. SPF hold time
- D. Interface dampening

Answer: B

NEW QUESTION 281

How can jitter be compensated on an IP network that carries real-time VoIP traffic with acceptable voice transmission quality?

- A. Set up VAD to replace gaps on speech with comfort noise
- B. Change CODEC from G.729 to G.711
- C. Deploy RSVP for dynamic VoIP packet classification
- D. Set up a playout buffer to play back the voice stream

Answer: D

NEW QUESTION 284

In a network with dynamic mutual redistribution between multiple OSPFv2 and EIGRP boundaries, which two mechanisms avoid suboptimal routing? (Choose two)

- A. Route filtering
- B. AD manipulation
- C. Matching EIGRP process ID
- D. Matching OSPF external routes
- E. Route tagging

Answer: AE

NEW QUESTION 289

Which two conditions are required for successful route aggregation? (Choose two)

- A. Contiguous prefix allocation
- B. Logical separation between zones or layers within networks
- C. Matching traffic aggregation with route aggregation locations
- D. Consistent prefix allocations per network
- E. Physical separation between zones or layers within networks

Answer: BD

NEW QUESTION 292

In an Ethernet link containing five routers with OSPF network interface type configured as broadcast, how many OSPF adjacencies are established on this Ethernet link?

- A. 7
- B. 5
- C. 10
- D. 20
- E. 6

Answer: A

NEW QUESTION 296

What is an effect of using ingress filtering to prevent spoofed addresses on a network design?

- A. It reduces the effect of DDoS attacks when associated with DSCP remarking to Scavenger
- B. It protects the network infrastructure against spoofed DDoS attacks
- C. It filters RFC 1918 addresses
- D. It classifies bogon traffic and remarks it with DSCP bulk

Answer: B

NEW QUESTION 298

DRAG DROP

A service provider offers Layer 2 multipoint services to their customers. Drag the protocol on the left to the target on the right to indicate the protocols that can be used to signal pseudowires.

LDP		Protocols
RSVP		
BGP		
L2TPv3		

- A. Mastered
B. Not Mastered

Answer: A

Explanation:

Protocols
LDP
BGP

NEW QUESTION 300

DRAG DROP

Drag the IT standards on the left to their network design application on the right. Not all applications will be used.

FCAPS		Change management
ITIL®		Governance framework
CMIP		OSI-specified network management protocol
TMN		Telecommunications systems management framework
		Network management framework
		Enterprise architecture framework

- A. Mastered
B. Not Mastered

Answer: A

Explanation:

ITIL®
Governance framework
CMIP
TMN
FCAPS
Enterprise architecture framework

NEW QUESTION 305

DRAG DROP

Drag the QoS tools on the left and drop each into its corresponding function on the right.	
Policing	Addresses congestion that is due to speed mismatches when CIR is not exceeded.
Marking	Drops traffic to ensure that the committed or offered rate are not exceeded.
Buffering	Allows drops to be minimized based on traffic classification when CIR is exceeded.
WRED	Allows for consistent classification within a DiffServ domain.
Shaping	Avoids congestion via selective traffic dropping within the network.
ECN	Avoids congestion by end hosts reducing their traffic rates when congestion is detected.

- A. Mastered
- B. Not Mastered

Answer: A

Explanation:

Buffering
Policing
Shaping
Marking
WRED
ECN

NEW QUESTION 306

DRAG DROP

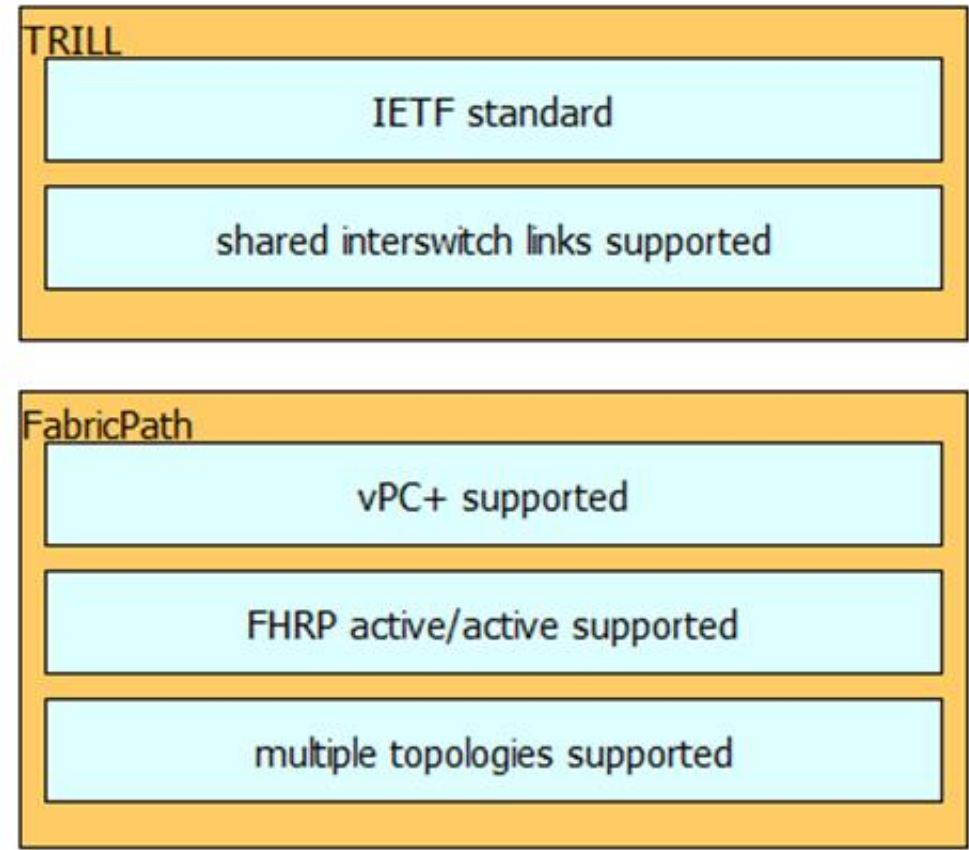
Drag and drop the technology details or features support on the left into the corresponding Layer 2 multipath technologies on the right. Not all options will be used.

IETF standard	TRILL Target 1 Target 2
vPC+ supported	
FHRP active/active supported	FabricPath Target 3 Target 4 Target 5
shared interswitch links supported	
extension of OSPF	
multiple topologies supported	

- A. Mastered
- B. Not Mastered

Answer: A

Explanation:



NEW QUESTION 309

.....

Thank You for Trying Our Product

* 100% Pass or Money Back

All our products come with a 90-day Money Back Guarantee.

* One year free update

You can enjoy free update one year. 24x7 online support.

* Trusted by Millions

We currently serve more than 30,000,000 customers.

* Shop Securely

All transactions are protected by VeriSign!

100% Pass Your 352-001 Exam with Our Prep Materials Via below:

<https://www.certleader.com/352-001-dumps.html>