

400-101 Dumps

CCIE Routing and Switching (v5.1)

<https://www.certleader.com/400-101-dumps.html>



NEW QUESTION 1

Which two statements about 802.10 tunneling are true? (Choose two.)

- A. It requires a system MTU of at least 1504 bytes.
- B. The default configuration sends Cisco Discovery Protocol, STP, and VTP information.
- C. Traffic that traverses the tunnel is encrypted.
- D. It is supported on private VLAN ports.
- E. MAC-based QoS and UDLD are supported on tunnel ports.
- F. Its maximum allowable system MTU is 1546 bytes.

Answer: AE

NEW QUESTION 2

Which protocol allows connections made by an NBMA network to dynamically learn connected address?

- A. A.PPP
- B. NHRP
- C. HDLC
- D. POP

Answer: B

NEW QUESTION 3

Refer to the exhibit.

```
R1
aaa authentication login default group radius group tacacs+ local
```

If R1 contacts the RADIUS server but It unable to find the user name in the server database, how will R1 respond?

- A. It will prompt the user to enter a new username.
- B. It will attempt to contact the TACACS+ server.
- C. It will deny the user access.
- D. It will attempt to authenticate the user against the local database.

Answer: C

NEW QUESTION 4

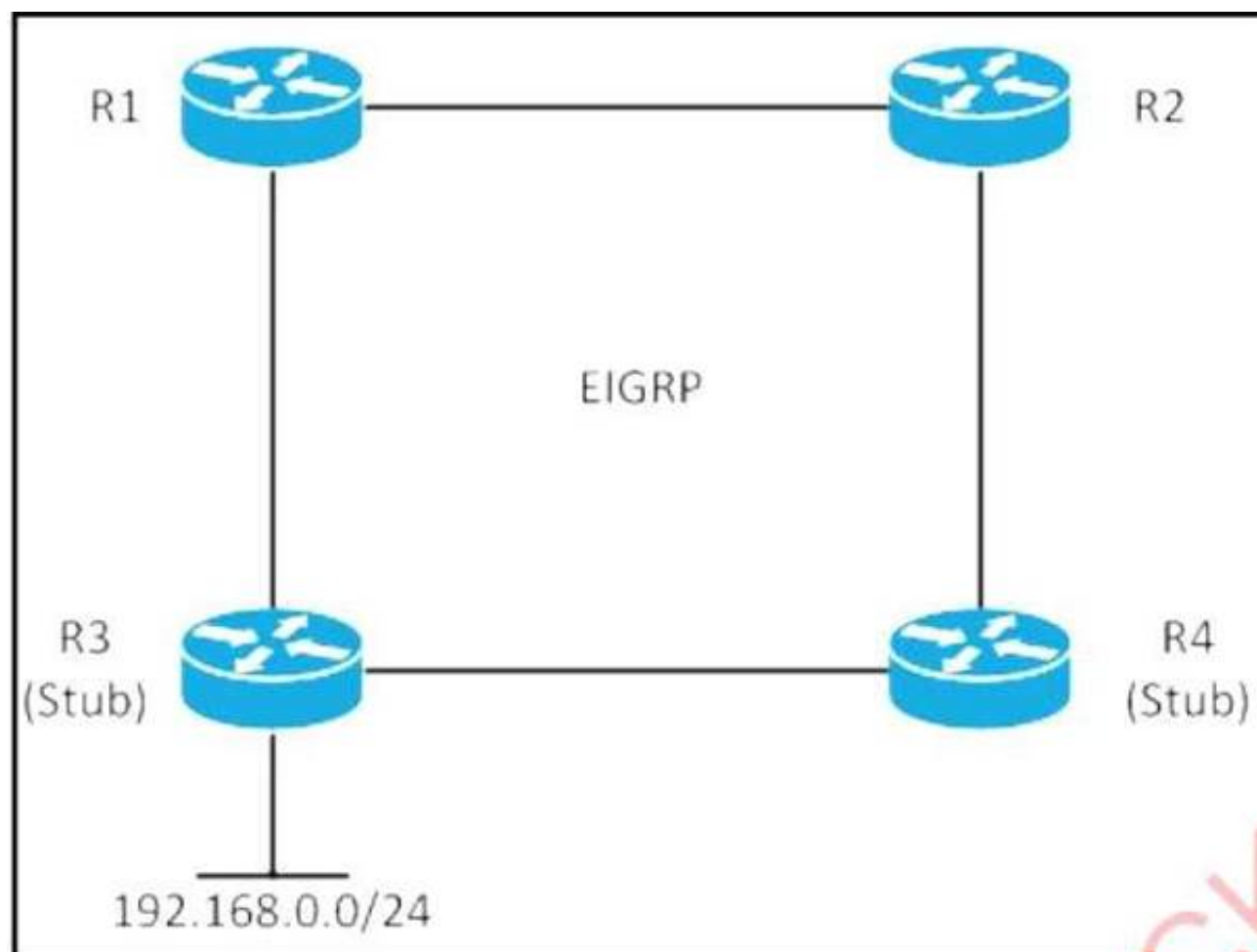
When you deploy DMVPN, what is the purpose of the command `crypto isakmp key ciscotest address 0.0.0.0 0.0.0.0`?

- A. It is configured on hub and spoke router to establish peering
- B. It is configured on hub to set the pre-shared key for the spoke routers
- C. It is configured on the spokes to indicate the hub router
- D. It is configured on the Internet PE routers to allow traffic to traverse the ISP core

Answer: B

NEW QUESTION 5

Refer to the exhibit.



All routers are running EIGRP and the network has converged. R3 and R4 are configured as EIGRP Stub. if the link between R1 and R3 goes down, which statement is true?

- A. R1 sends traffic destined to 192.168.0.100 via R2
- B. R2 does not have a route to 192.168.0.0/24 in the routing table.
- C. The prefix 192.168.0.0/24 becomes stuck-in-active on R4
- D. R3 does not advertise 192.168.0.0/24 to R4 anymore

Answer: B

NEW QUESTION 6

Which way to influence path selection with EIGRP is preferred?

- A. changing the bandwidth, because it does not have any impact on other router features.
- B. changing the bandwidth, because that is what Cisco recommends.
- C. changing the bandwidth, because it must be done only on one interface along the path.
- D. changing the delay, even if it must be done on multiple interfaces

Answer: D

NEW QUESTION 7

What are three valid HSRP states? (Choose three.)

- A. listen
- B. learning
- C. full
- D. established
- E. speak
- F. INIT

Answer: ABE

NEW QUESTION 8

External EIGRP route exchange on routers R1 and R2 was failing because the routers had duplicate router IDs. You changed the `eigrp router-id` command on R1, but the problem persists. With additional action must you take to enable the routers to exchange routes?

- A. Change the corresponding loopback address.
- B. Change the router ID on R2.
- C. Reset the EIGRP neighbor relationship.
- D. Clear the EIGRP process.

Answer: D

NEW QUESTION 9

Which two statements about IPv6 6to4 tunnels are true? (Choose two)

- A. Sites use addresses from the 2002::/16 prefix
- B. Sites use addresses from link-local scope
- C. They are point-to-multipoint tunnels
- D. They are point-to-point tunnels
- E. They rely on GRE encapsulation

Answer: BC

NEW QUESTION 10

What is the source MAC address of a BPDU frame that is sent out of a port?

- A. the lowest MAC address on the switch
- B. the highest MAC address on the switch
- C. the MAC address of the individual port that is sending the BPDU
- D. the same as the MAC address in the bridge ID

Answer: C

NEW QUESTION 10

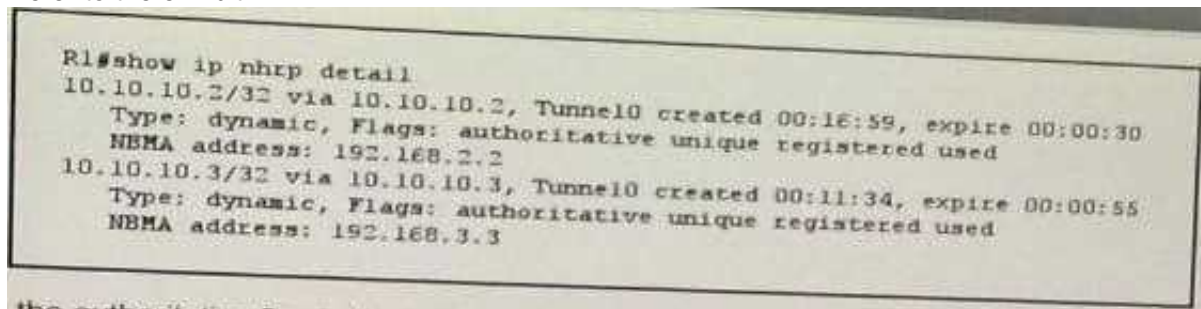
What command can you enter to configure NBAR to recognize VNC traffic?

- A. ip nbar port-map VNC hex 0xAA 0x1B
- B. ip nbar custom-map VNC tcp-udp 5900 5901
- C. ip nbar port-to-application seq 5 VNC tcp 5900 5901
- D. ip nbar application-map VNC udp 5900 5901
- E. ip nbar port-map VNC tcp 5900 5901

Answer: E

NEW QUESTION 15

Refer to the exhibit.



Which statement describes what the authoritative flag indicates?

- A. Authentication was used for the mapping.
- B. R1 learned about the NHRP mapping from a registration request.
- C. Duplicate mapping in the NHRP cache is prevented.
- D. The registration request had the same flag set.

Answer: B

NEW QUESTION 19

Which three statements describe the characteristics of a VPLS architecture? (Choose three)

- A. It can suppress the flooding of traffic.
- B. It supports MAC address aging.
- C. It forwards Ethernet frames.
- D. It maps MAC address destinations to IP next hops.
- E. It conveys MAC address reachability information in a separate control protocol.
- F. It replicates broadcast and multicast frames to multiple ports.

Answer: BCF

NEW QUESTION 24

Which command can you enter to prevent IS-IS POU's from using the full MTU size?

- A. no hello padding
- B. set-overload-bit on-startup 120
- C. metric-style wide
- D. set-overload-bit on-startup wait- for-bgp suppress interlevel

Answer: A

NEW QUESTION 26

Two routers are connected on a PPP link using CHAP authentication by default which value will the routers use as t identification on the link?

- A. Their hostnames
- B. Their IP address on the connected link
- C. Their interface numbers
- D. Their serial numbers

Answer: A

NEW QUESTION 27

Which two statements about root guard and loop guard are true? (Choose two.)

- A. Root guard disables an interface only when a superior BPDU is received
- B. Loop guard uses its own keepalives to determine unidirectional traffic
- C. When loop guard is enabled, the port is transitioned to the root-inconsistent state
- D. Loop guard uses its own keepalives to prevent loops by detecting failures.
- E. Loop guard uses BPDU keepalives to determine unidirectional traffic
- F. Root guard should be enabled on an upstream interlace

Answer: AE

NEW QUESTION 29

Which statement about EIGRP request packets is true?

- A. They determine whether a destination is reachable
- B. They are transmitted via broadcast
- C. They are transmitted unreliably
- D. They are sent in response to queries

Answer: C

NEW QUESTION 32

Which two configuration options are available for PIM snooping? (Choose two)

- A. on a specific interface on the device
- B. under the SVI for the corresponding VLAN
- C. on a range of interfaces on the device
- D. under the VLAN in VLAN configuration mode
- E. globally on the device

Answer: BE

NEW QUESTION 35

You are backing up a server with a 1 Gbps link and a latency of 2 ms. Which two statements about the backup are true? (Choose two.)

- A. The bandwidth delay product is 2 Mb.
- B. The default TCP send window size is the limiting factor.
- C. The default TCP receive window size is the limiting factor.
- D. The bandwidth delay product is 500 Mb.
- E. The bandwidth delay product is 50 Mb.

Answer: AC

NEW QUESTION 38

Which statement about Cisco Express Forwarding are true?

- A. The FIB table resides on the route processor and the adjacency table resides on the line cards when Cisco Express Forwarding is enabled.
- B. The FIB table and the adjacency table reside on the line cards when Cisco Express Forwarding is enabled.
- C. Layer 2 next-hop address information is maintained in the adjacency table.
- D. Layer 2 next-hop address information is maintained in the FIB table.

Answer: C

NEW QUESTION 39

What are the two BFD modes? (Choose two)

- A. active
- B. asynchronous
- C. passive
- D. established
- E. demand
- F. synchronous

Answer: BE

NEW QUESTION 43

Which PHB type allows for the best interoperability with IP Precedence already used in the network?

- A. Assured Forwarding
- B. Expedited Forwarding
- C. Class Selector
- D. Default

Answer: C

NEW QUESTION 46

What are two effects of configuring the passive-interface command on a router running RIPv2? (Choose two.)

- A. It prevents the device from sending multicast updates.
- B. The device will ignore updates from other devices.
- C. It enables the device to send broadcast updates.
- D. The device will not ignore updates from other devices.
- E. It enables the device to accept multicast updates from other devices.

Answer: AD

NEW QUESTION 48

What can PfR passive monitoring mode measure for UDP flows?

- A. throughput
- B. loss
- C. reachability
- D. delay

Answer: A

NEW QUESTION 50

What are the two Cisco recommended methods for reducing the size of the TCAM on a Layer 3 switch? (Choose two)

- A. Use the ip route profile command.
- B. Adjust the output queue buffers.
- C. Filter unwanted routes.
- D. Optimize the SDM template.
- E. Use summary routes.

Answer: CE

NEW QUESTION 55

Refer to the exhibit.

```
crypto isakmp policy 20
authentication pre-share
crypto isakmp key isakmp address 192.168.10.1
crypto ipsec transform-set esp-des esp-des esp-md5-hmac
crypto map myvpn 10 ipsec-isakmp
set peer 192.168.10.1
set transform-set esp-des
match address 20
```

Which authentication method can the device use as an alternate to the pre-shared key?

- A. clear-text
- B. certificate
- C. 802.1X
- D. null

Answer: B

NEW QUESTION 57

Refer to the exhibit.

```
router eigrp 1
network 10.0.0.0
eigrp stub
```

Which two route types are advertised by a router with this configuration? (Choose two)

- A. stark
- B. summary
- C. connected
- D. redistributed
- E. external

Answer: BC

NEW QUESTION 58

Refer to the exhibit.


```
R1

ip community-list 10 permit 64512:100 64512:200 64512:41650 64513:1220

route-map INTERNET-OUT permit 10
  match community 10

router bgp 64512
  no synchronization
  neighbor INTERNET peer-group
  neighbor INTERNET remote-as 64513
  neighbor INTERNET password c1sC0
  neighbor 192.168.250.53 peer-group INTERNET

address-family ipv4
  no synchronization
  neighbor INTERNET send-community both
  neighbor INTERNET route-map INTERNET-OUT out

R1#show bgp 172.29.224.0

BGP routing table entry for 172.29.224.0/24, version 607252621
Paths: (1 available, best #1, table default)
Multipath: eBGP iBGP
  Advertised to update-groups:
    3          4          7
53739
  10.10.153.12 from 10.10.153.120 (10.10.153.12)
    Origin IGP, metric 0, localpref 130, valid, external, best
    Community: 64512:555 64513:200 64513:59090 64512:64002 64513:64090
```

Which two actions can you take to allow the network 172.29.224.0/24 to be reachable from peer 192.168.250.53? (Choose two)

- A. Modify the community list to match community 64513:64090 attached to 172.29.224 .0/24.
- B. Configure soft reconfiguration to peering 192.168.250.53.
- C. Modify the outbound route map to permit all additional traffic.
- D. Configure additional address families to peering 192.168.250.53.
- E. Modify the inbound route map to permit all additional traffic

Answer: AC

NEW QUESTION 63

Which three protocols are permitted by IEEE 802.1x port-based authentication before the client is successfully authenticated by the RADIUS server? (Choose three)

- A. IP
- B. CDP
- C. EAPOL
- D. STP
- E. TCP
- F. BOOTP

Answer: BCD

NEW QUESTION 64

Which two features are incompatible with Loop Guard on a port? (Choose two.)

- A. Root Guard
- B. PortFast
- C. UplinkFast
- D. BackboneFast
- E. BPDU skew detection

Answer: AB

NEW QUESTION 65

Which two options are functions of the master controller in PfR? (Choose two.)

- A. It learns the traffic path.
- B. It performs traffic inspection.
- C. It provides network visibility.
- D. It applies the policy.
- E. It enforces the traffic path.

Answer: AD

NEW QUESTION 68

Which two statements about Cisco Express Forwarding load balancing are true? (Choose two.)

- A. Cisco Express Forwarding can load-balance over a maximum of two destinations
- B. It combines the source IP address subnet mask to create a hash for each destination
- C. Each hash maps directly to a single entry in the RIB
- D. Each hash maps directly to a single entry in the adjacency table
- E. It combines the source and destination IP addresses to create a hash for each destination

Answer: DE

NEW QUESTION 69

Which three statements about AToM are true? (Choose three.)

- A. It supports interworking for Frame Relay, PPP, and Ethernet, but not ATM.
- B. The attachment circuit is configured with the xconnect command.
- C. It requires MPLS between PE routers.
- D. The PE routers must share the same VC identifier.
- E. IP CEF should be disabled on the PE routers.
- F. It requires Layer 3 routing between the PE and CE router.

Answer: BCD

NEW QUESTION 70

Which two statements about I1Pv6 RA guard are true? (Choose two)

- A. It blocks unauthorized ICMPv6 Type 134 packets
- B. It supports host mode and router mode
- C. It provides security for tunneled IPv6 traffic
- D. It is supported in the ingress and egress directions
- E. It blocks unauthorized ICMPv6 Type 133 packets

Answer: AB

NEW QUESTION 72

What is one requirement to support the IGMP proxy feature?

- A. Devices on the unidirectional link must be in the same IP subnet.
- B. Devices connected to a unidirectional link must disable Internet access.
- C. IGMP snooping must be disabled.
- D. PIM-OM must be enabled on all unidirectional links.

Answer: A

NEW QUESTION 73

Which three types of behavior does an OSPFv3 IPV6 AF-capable router exhibit when a non-AF- capable router attempts to form an adjacency? (Choose three)

- A. LSAs are honored
- B. LSAs are not honored
- C. DBOs are honored
- D. DBOs are not honored
- E. Hellos are honored
- F. Hellos are not honored

Answer: BDF

NEW QUESTION 75

Which two statements about IGMP Querier are true? (Choose two.)

- A. In IGMPv3, the Querier election process uses a multicast routing protocol.
- B. A Querier uses 224 .0.0.1 as the destination address for general queries.
- C. In IGMPv2, the router with the highest IP address is elected as the Querier.
- D. A Querier running IGMPv2 or IGMPv3 supports group-specific query messages.
- E. In IGMPv2, the router with the lowest MAC address is elected as the Querier.
- F. A Querier running IGMPv3 sends the group-specific and group-and-source-specific queries to 224.0.0.22

Answer: BF

NEW QUESTION 80

What are two general SDN characteristics? (Choose two)

- A. Southbound interfaces are interfaces used between the control plane and the data plane
- B. The separation of the control plane from the data plane
- C. Northbound interfaces are open interfaces used between the control plane and the data plane.
- D. OpenFlow is considered one of the first Northbound APIs used by SDN controllers.
- E. OVSDB is an application database management protocol.

Answer: BC

NEW QUESTION 81

Which are the three recommended steps to implement your Risk-Based IoT Security Program? (Choose three)

- A. Analyze
- B. Troubleshoot
- C. Implement
- D. Formalize
- E. Optimize
- F. Assess

Answer: ACF

NEW QUESTION 86

Which three connectivity models for vEdge Site Architecture are true? (Choose three.)

- A. hybrid with FallBack
- B. augmentation model
- C. full SD-WAN
- D. secure virtual connectivity
- E. secure tunnel
- F. cloud provider

Answer: ACD

NEW QUESTION 91

Which two statement about the EIGRP Over the Top feature are true? (Choose two.)

- A. EIGRP routers traffic between the PE devices.
- B. Traffic is LISP-encapsulated on the control plan
- C. The neighbor command must be configured with LISP encapsulation on each CE device
- D. The network statement must be configured on each PE device to connect separate EIGRP sites.
- E. Traffic is LISP-encapsulated on the data plan

Answer: CE

NEW QUESTION 96

Which prefix list matches and permits all RFC 1918 network 10.0.0.0 routes that have masks of /16 through /24?

- A. ip prefix-list foo seq 10 permit 10.0.0.0/16 le 24
- B. ip prefix-list foo seq 10 permit 10.0.0.0/8 ge 15 le 25
- C. ip prefix-fist foe seq 10 permit 10.0.0.0/16 ge 15 le 25
- D. ip prefix-list foo seq 10 permit 10.0.0.0/8 ge 16 le 24

Answer: D

NEW QUESTION 97

Which description correctly describes Git?

- A. Git is a version control system for tracking changes in files
- B. Git is a web-based repository for sharing files
- C. Git is a configuration management tool that automates provisioning
- D. Git is a command-line utility for creating archives of files

Answer: A

NEW QUESTION 101

What are two functions of IGMP snooping? (Choose two)

- A. Enabling hosts in a UDLR environment to join a multicast group sourced from an upstream network.
- B. Learning and maintaining multicast group memberships at the Layer 2 level
- C. Constraining multicast traffic lo VPLS interfaces.
- D. Determining the ports that should receive multicast traffic from certain sources or groups
- E. Restricting multicast packets for IP multicast groups that have downstream receivers.

Answer: CD

NEW QUESTION 102

Refer to the exhibit.

```
R1
interface Loopback0
 ip address 172.16.1.1 255.255.255.255
interface FastEthernet0/0
 ip address 192.168.12.1 255.255.255.0
router eigrp 100
 no auto-summary
 redistribute connected
 network 192.168.12.0 0.0.0.255 area 0

R2
interface FastEthernet0/0
 ip address 192.168.12.2 255.255.255.0
router eigrp 100
 no auto-summary
 network 192.168.12.0 0.0.0.255 area 0
```

While troubleshooting a connectivity issue between R1 and R2, you determine that R1's Loopback0 network is missing from R2's route table. What are two actions you could take to resolve the problem? (Choose two.)

- A. Configure the same router ID under the EIGRP process of each router.
- B. Configure a different router ID under the EIGRP process of each router.
- C. Increase the distance of internal EIGRP routes on R1.
- D. Increase the distance of external EIGRP routes on R1.
- E. Configure default metrics under the router eigrp process.
- F. Add EIGRP metrics that the redistribute connected command on R1.

Answer: EF

NEW QUESTION 105

Which two statements about MSDP are true? (Choose two.)

- A. Peering takes place over PIM.
- B. Peering takes place over UDP.
- C. Peering takes place over TCP.
- D. It facilitates source redundancy in PIM Dense Mode scenarios.
- E. It facilitates RP redundancy and load-sharing in PIM Sparse Mode scenarios.
- F. It facilitates RP redundancy and load-sharing in Bidirectional PIM scenarios.

Answer: CE

NEW QUESTION 108

How can you configure your network to prevent TCP starvation?

- A. Separate TCP and UDP traffic into different queues.
- B. Mark all traffic in accordance with your service providers QoS criteria.
- C. Enable WRED on the service provider class.
- D. Configure LLQ for all TCP application traffic.

Answer: A

NEW QUESTION 113

Refer to the exhibit.

```
interface Loopback0
 ip address 172.16.1.1 255.255.255.255

interface Loopback1
 ip address 172.16.11.11 255.255.255.255
 ip router isis

interface FastEthernet0/0
 ip address 192.168.12.1 255.255.255.0
 ip router isis

router isis
 passive-interface Loopback0
 net 47.0001.0011.0001.0111.1111.00
 advertise passive-only
```

What are two effects of the given configuration? (Choose two)

- A. The router will advertise the 172.16.1.1/32 network.
- B. The router will stop sending hello packets on Loopback.1.
- C. The router will advertise the 192.168.12.0/24 network.
- D. The router will send hello packets from Loopback0.
- E. The router will advertise the 172.16.1.1/32 network
- F. The router will stop sending and receiving IS-IS packets on Loopback0.

Answer: AF

NEW QUESTION 117

Which two statements about MLD are true? (Choose two.)

- A. It supports both general and group-specific query messages.
- B. MLDv2 has only limited backward-compatibility with MLDv1.
- C. MLDv1 is based on IGMPv1.
- D. It can use IGMP or PIM to carry messages.
- E. It is used by IPv4 devices to discover listeners.
- F. It uses multicast queries and hosts to limit multicast traffic flow on the network.

Answer: BC

NEW QUESTION 120

Which two statements about Cisco HDLC are true? (Choose two.)

- A. Cisco HDLC is the preferred protocol in multivendor environments.
- B. Cisco routers can carry multiple network-layer protocols simultaneously over the same HDLC link
- C. Cisco HDLC supports authentication of peering routers on the same HDLC link
- D. Cisco HDLC is the default encapsulation on Serial and Dialer interfaces.
- E. Cisco HDLC allows routers to negotiate the supported network-layer protocols before sending their packets over an HDLC link
- F. Cisco HDLC allows bundling of multiple links between the same pair of routers into a faster communication channel

Answer: DE

NEW QUESTION 121

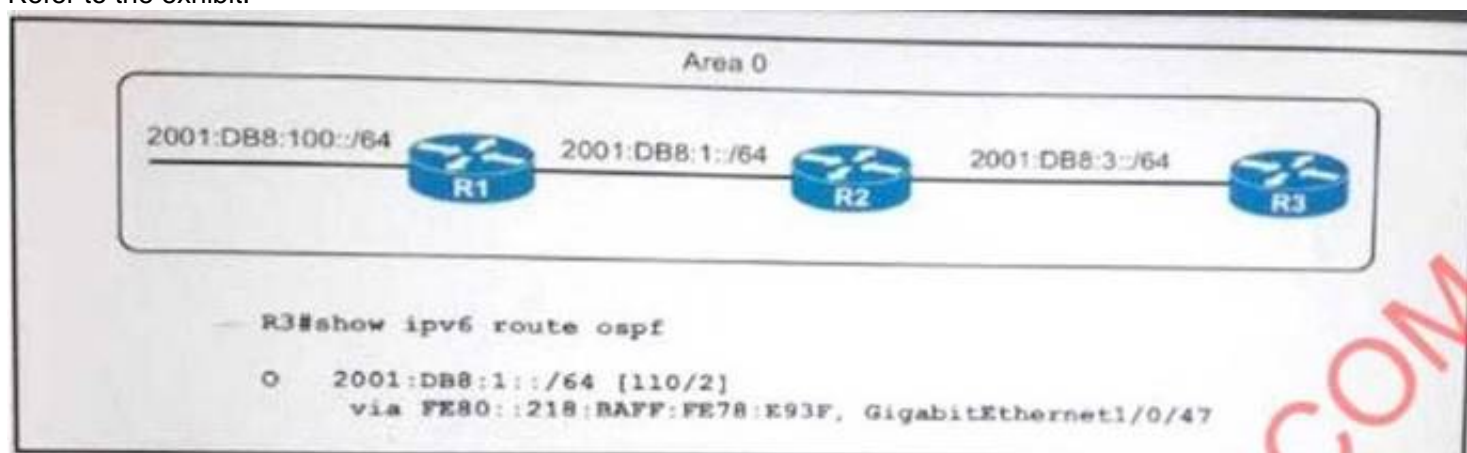
What is a potential effect of combining TCP-based traffic and UDP-based traffic in the same service- provider class?

- A. Both TCP and UDP packets can be retransmitted.
- B. Queues can become unavailable.
- C. UDP starvation can occur.
- D. UDP dominance can occur

Answer: D

NEW QUESTION 126

Refer to the exhibit.



All routers have FULL OSPF adjacencies. Which reason is likely that R3 is missing the 2001:DB8:100:164 route?

- A. R1 has prefix suppression configured
- B. R1 has an incorrect area number configured
- C. R1 has loop-free alternate routing configured
- D. R1 has LSA throttling configured

Answer: A

NEW QUESTION 131

Which condition needs to be met for an eBGP neighborship to be established?

- A. The AS numbers need to be the same
- B. the BGP TTL security feature needs to be taken into account with regards to the number of hops on the path
- C. reachability on TCP port 178 between both routers needs to be possible
- D. reachability between the loopback IP addresses of both routers is required

Answer: B

NEW QUESTION 136

Which two statements about HDLC are true? (Choose two.)

- A. It is a frame-oriented data link layer protocol.
- B. The packet header contains the control field and address.
- C. It supports clear-text authentication.
- D. It supports both synchronous and asynchronous serial links.
- E. It guarantees error-free transmission.

Answer: BE

NEW QUESTION 137

DRAG DROP

Drag and drop each BGP attribute on the left into the priority order in which the attributes are preferred when determining the best path on the right.

highest LOCAL_PREF	First
highest WEIGHT	Second
locally originated path	Third
lowest MED	Fourth
lowest origin type	Fifth
shortest AS_PATH	Sixth

Answer:

Explanation:

highest WEIGHT
highest LOCAL_PREF
locally originated path
shortest AS_PATH
lowest origin type
lowest MED

NEW QUESTION 138

DRAG DROP

What is the correct order of the VSS initialization process? Drag and drop the actions on the left to the correct initialization step on the right.

bring up VSL links	initialization
run VSLP	initialization
preparse config	initialization
run RRP	initialization
continue system bootup	initialization
interchassis SSO	initialization

Answer:

Explanation:

bring up VSL links	preparse config
run VSLP	bring up VSL links
preparse config	run VSLP
run RRP	run RRP
continue system bootup	interchassis SSO
interchassis SSO	continue system bootup

NEW QUESTION 140

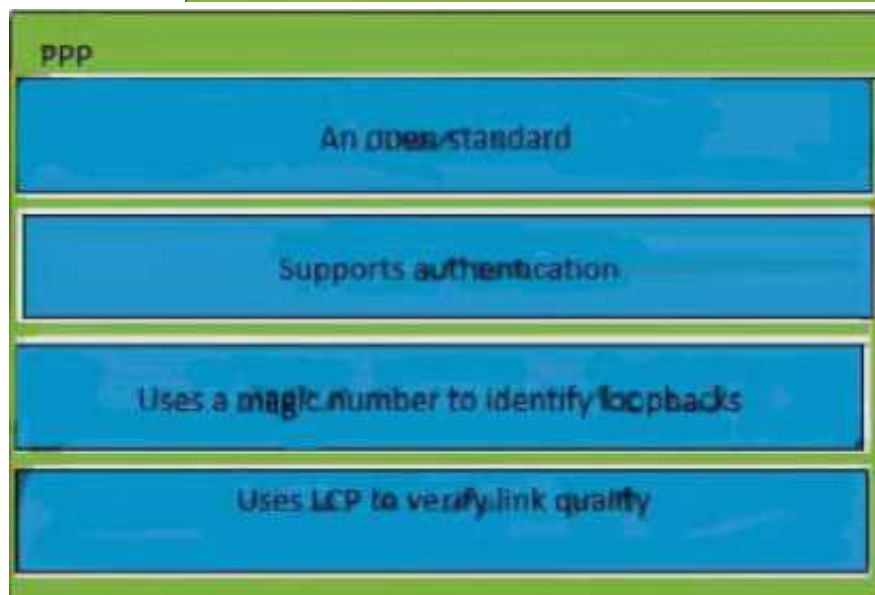
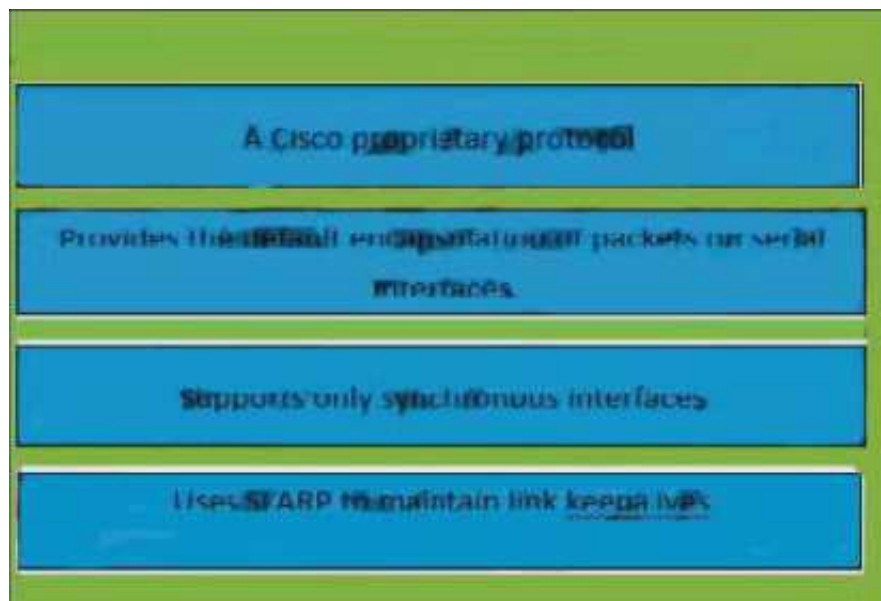
DRAG DROP

Drag and drop each description from the left into the matching protocol category on the right. Select and Place:

A Cisco proprietary protocol	HDLc
Adheres to standard	
Provides a default encapsulation for packets sent on all interfaces	
Supports authentication	
Supports only synchronous interfaces	ppp
Uses a magic number to identify linkbacks	
Uses LCP to verify link quality	
Uses SLARP to maintain link integrity	

Answer:

Explanation:



NEW QUESTION 144

DRAG DROP

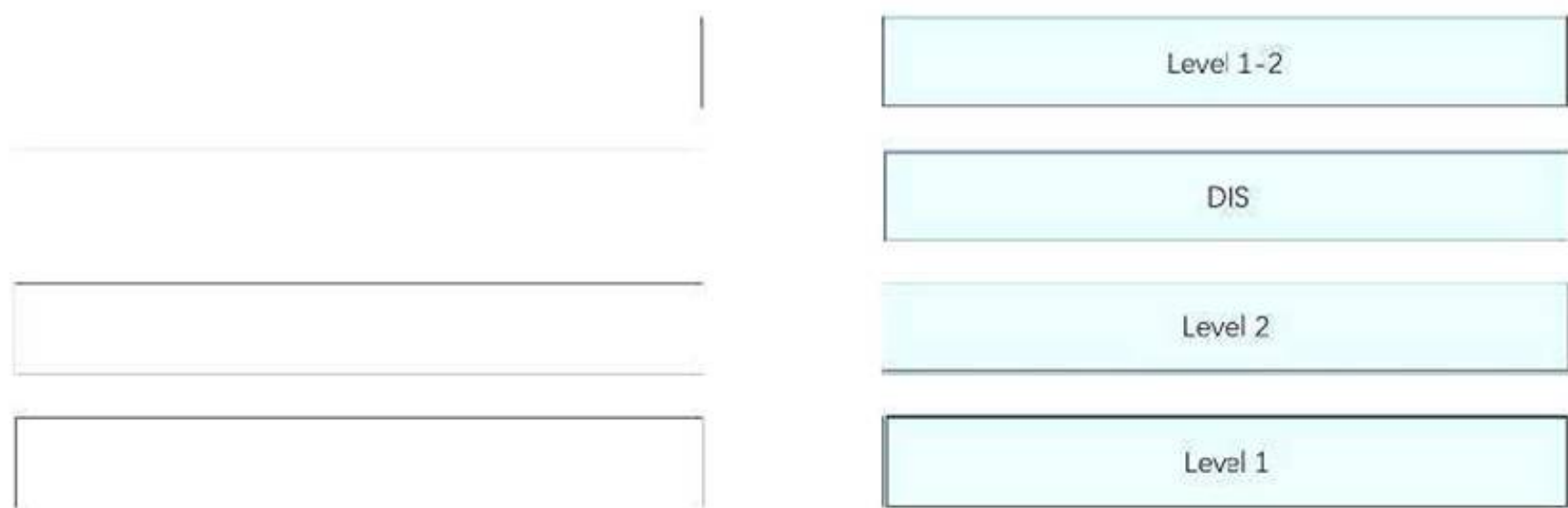
Drag and drop each IS-IS router type from the left onto the best matching OSPF router type on the right.

Select and Place:

DIS	ABR
Level 1	designated router
Level 1-2	Internal backbone
Level 2	Totally Stubby internal nonbackbone

Answer:

Explanation:



NEW QUESTION 149

DRAG DROP

Drag and drop each IPv6 neighbor discovery message type on the left to the corresponding description on the right.

neighbor redirect	The message a node uses to share its link-layer address
router solicitation	The message a node uses to notify hosts on the link of a better first-hop for a destination
router advertisement	The message a node uses to discover the link-local addresses of other nodes on the link
neighbor advertisement	The message a node uses to share information about its status and its local prefixes
neighbor solicitation	The message a host sends when it starts up, requesting local routers to transmit information

Answer:

Explanation:

neighbor advertisement
neighbor redirect
neighbor solicitation
router advertisement
router solicitation

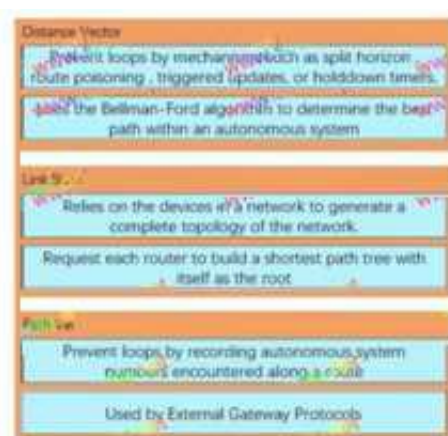
NEW QUESTION 150

DRAG DROP

Drag and drop each statement about routing protocols on the left to the matching routing protocol type on the right. Select and Place:

Prevent loops by recording autonomous system numbers encountered along a route	Distance Vector
Relies on the devices in a network to generate a complete topology of the network	
Used by External Gateway Protocols	
Uses the Bellman-Ford algorithm to determine the best path within an autonomous system	Link St.
Request each router to build a shortest path tree with itself as the root	
Prevent loops by mechanisms such as split horizon, route poisoning, triggered updates, or holddown timers	Path vector

Answer:



DRAG DROP

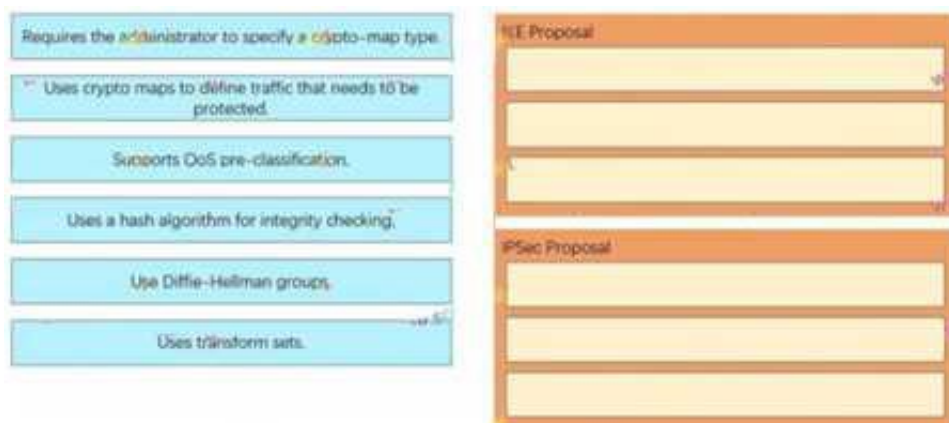
Drag each characteristics of PIM on the left to the matching PIM mode on the right. Select and Place:



DRAG DROP

Drag each statement about VPN policies on the left into the matching VPN policy category on the right.

Select and Place:



Explanation:

**NEW QUESTION 160**

A user is presented with the underlying hardware and software needed to develop and offer applications via the internet from a cloud service provider. Which cloud model is this user consuming?

- A. Application as a service
- B. Software as a service
- C. Platform as a service
- D. Infrastructure as a service

Answer: C

NEW QUESTION 164

Which two options are 802.15.4 node types? (Choose two)

- A. Limited Function Device
- B. Reduced Function Device
- C. Expanded Function Device
- D. Mesh Function Device
- E. Full Function Device

Answer: BE

NEW QUESTION 166

Which two statements about IPv6 RA guard are true?

- A. It is applied only on the egress interface
- B. It is applied only on the ingress interface
- C. It can be applied on ingress and egress interfaces
- D. It must be applied individually to specific interfaces
- E. It can be applied globally to all interfaces on the device
- F. It supports global policies that match an ACL based on the source IP address

Answer: AF

NEW QUESTION 169

Which three terms are used to describe an OS-level virtualization method for deploying and running distributed applications? (Choose three)

- A. Containerization
- B. Container networking
- C. Container-based virtualization
- D. Virtualized networking
- E. Application containerization
- F. Container Stack
- G. Shared Kernel

Answer: ACE

NEW QUESTION 171

What are two differences between IPv6 ISATAP tunneling and IPv6 6to4 tunneling? (Choose two)

- A. Only ISATAP tunneling can transfer IPv6 multicast packets
- B. Only 6to4 tunneling transfers unicast IPv6 packets within a site
- C. Only ISATAP tunneling transfers unicast IPv6 packets between sites
- D. Only ISATAP tunneling transfers unicast IPv6 packets within a site
- E. Only 6to4 tunneling requires 2002::/16 addresses

Answer: DE

NEW QUESTION 176

Which two options are valid IPv6 extension header types? (Choose two)

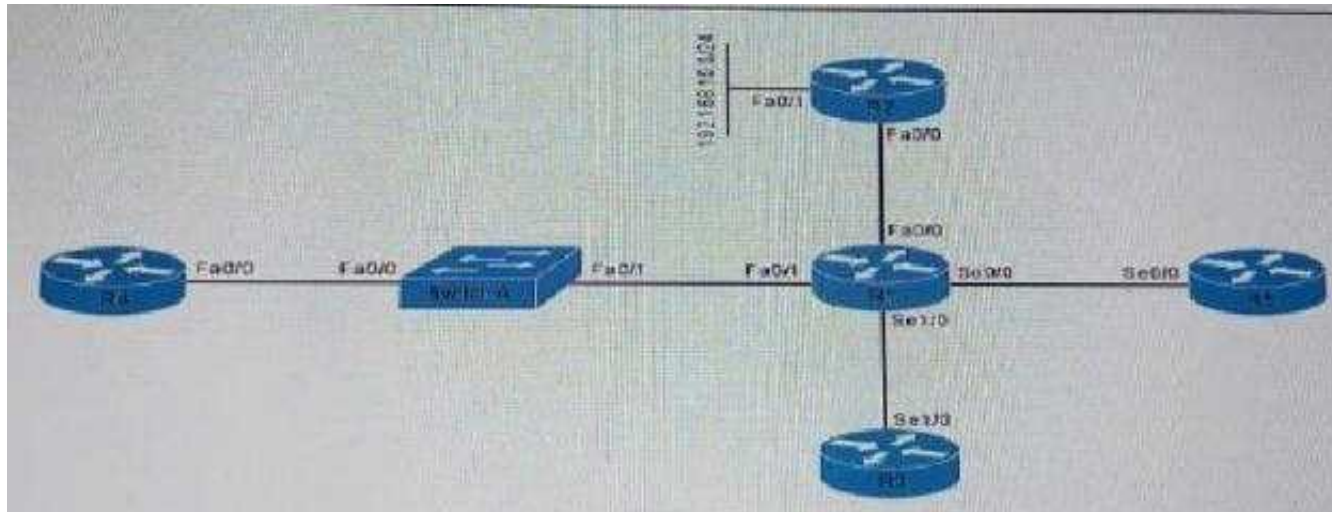
- A. Mobility

- B. Encapsulating Security Payload
- C. Version
- D. Flow Label
- E. Traffic Class

Answer: AB

NEW QUESTION 178

Refer to the exhibit.



Refer to the exhibit, assuming that all devices are running CDP in default configuration, which of them appear in the R1s show cdp neighbors table?

- A. Router 2, Router 3, Router 5 and Switch A only
- B. Router 2, Router 3, Router 4 and router 5 only
- C. Router 2, and Switch A only
- D. Router 3 and Router 5 only

Answer: A

NEW QUESTION 179

Refer to the exhibit.

```
interface FastEthernet0/0
 ip address 192.168.12.1 255.255.255.224

router eigrp 100
 passive-interface FastEthernet0/0
 network 192.168.12.0
 no auto-summary
```

What are two effects of the given configuration? (Choose two)

- A. The router will manually summarize the 192.168.12.0/27 network
- B. Auto-summarization will be enabled on the F0/0 interface
- C. The router will fail to form neighbor adjacencies over interface F0/0
- D. The router will fail to form neighbor adjacencies all EIGRP interfaces except F0/0
- E. The router will install the 192.168.12.0/27 network into its EIGRP topology table.

Answer: CE

NEW QUESTION 184

Refer to the exhibit.

<pre>Open Shortest Path First OSPF Header Version: 2 Message Type: Hello Packet (1) Packet Length: 44 Source OSPF Router: 10.155.255.1 (10.155.255.1) Area ID: 0.0.0.10 (0.0.0.10) Checksum: 0x0000 (None) Auth Type: Cryptographic (2) Auth Crypt Key ID: 121 Auth Crypt Data Length: 16 Auth Crypt Sequence Number: 1421584632 Auth Crypt Data: 589362284493a1312be3511bdf6673cd OSPF Hello Packet Network Mask: 255.255.255.0 (255.255.255.0) Hello Interval [sec]: 10 Options: 0x12 (L, E) 0... = DN: Not set 0... = O: Not set ..0... = DC: Demand Circuits are NOT supported ...1... = L: The packet contains LLS data block 0... = NP: NSSA is NOT supported 0... = MC: NOT Multicast Capable 1... = E: External Routing Capability 0... = MT: NO Multi-Topology Routing Router Priority: 1 Router Dead Interval [sec]: 40 Designated Router: 10.155.135.1 (10.155.135.1) Backup Designated Router: 0.0.0.0 (0.0.0.0) OSPF LLS Data Block</pre>	<pre>Open Shortest Path First OSPF Header Version: 2 Message Type: Hello Packet (1) Packet Length: 44 Source OSPF Router: 10.155.255.2 (10.155.255.2) Area ID: 0.0.0.10 (0.0.0.10) Checksum: 0x0000 (None) Auth Type: Cryptographic (2) Auth Crypt Key ID: 121 Auth Crypt Data Length: 16 Auth Crypt Sequence Number: 1421584619 Auth Crypt Data: e155d373cde2f5e39cd336e80cccf398 OSPF Hello Packet Network Mask: 255.255.255.0 (255.255.255.0) Hello Interval [sec]: 10 Options: 0x10 (L, NP) 0... = DN: Not set 0... = O: Not set ..0... = DC: Demand Circuits are NOT supported ...1... = L: The packet contains LLS data block 1... = NP: NSSA is supported 0... = MC: NOT Multicast Capable 0... = E: NO External Routing Capability 0... = MT: NO Multi-Topology Routing Router Priority: 10 Router Dead Interval [sec]: 40 Designated Router: 10.155.135.2 (10.155.135.2) Backup Designated Router: 0.0.0.0 (0.0.0.0) OSPF LLS Data Block</pre>
--------------------------------------------------------------------------------------------------------------------------------------------------------------------------------------------------------------------------------------------------------------------------------------------------------------------------------------------------------------------------------------------------------------------------------------------------------------------------------------------------------------------------------------------------------------------------------------------------------------------------------------------------------------------------------------------------------------------------------------------------------------------------------------------------------------------------------------------------------------------------------------------------------------------------------------------------------------------------------------------------------------------------------------------	---------------------------------------------------------------------------------------------------------------------------------------------------------------------------------------------------------------------------------------------------------------------------------------------------------------------------------------------------------------------------------------------------------------------------------------------------------------------------------------------------------------------------------------------------------------------------------------------------------------------------------------------------------------------------------------------------------------------------------------------------------------------------------------------------------------------------------------------------------------------------------------------------------------------------------------------------------------------------------------------------------------------------------------------

The OSPF adjacency between two routers cannot be established. What is the root cause of the problem?

- A. Area type mismatch
- B. Authentication error

- C. Mismatched OSPF network types
- D. Different area ID
- E. Both routers are designated routers.

Answer: A

NEW QUESTION 185

Which two application protocols require application layer gateway support when using NAT on a Cisco router? (Choose two.)

- A. SIP
- B. HTTP
- C. FTP
- D. SMTP
- E. POP3

Answer: AC

NEW QUESTION 186

Which three actions are required when configuring NAT-PT? (Choose

- A. Specify an IPv4-to-IPv6 translation
- B. Specify an IPv6-to-IPv4 translation
- C. Specify a ::/32 prefix that will map to an IPv6 address
- D. Specify a ::/96 prefix that will map to an IPv4 address
- E. Specify a ::/48 prefix that will map to a MAC address
- F. Enable NAT-PT globally

Answer: ABD

NEW QUESTION 191

Which escape sequence must you use to enter special characters as part of a key string?

- A. CTRL+S
- B. CTRL+P
- C. CTRL+K
- D. CTRL+V

Answer: D

NEW QUESTION 194

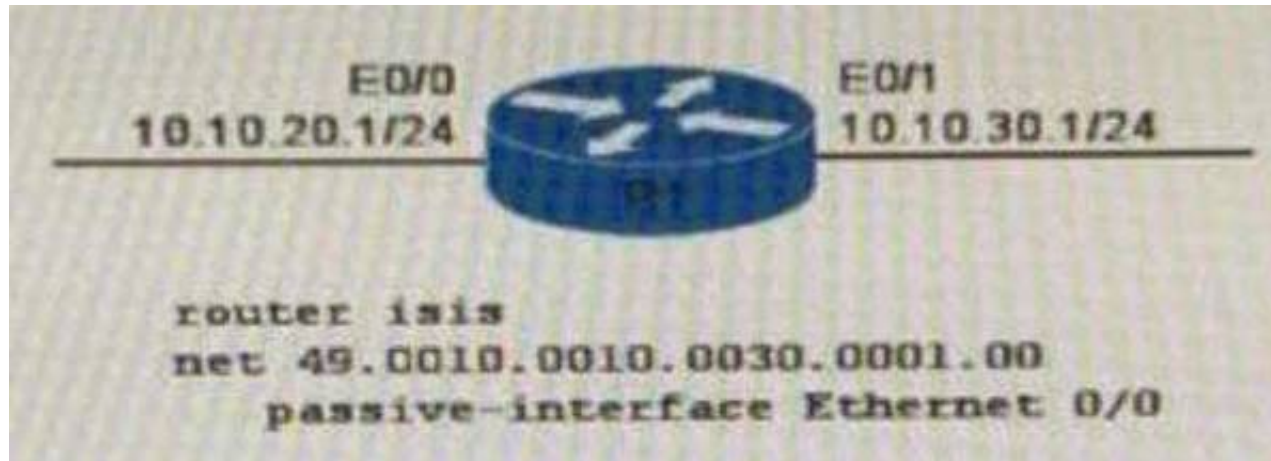
Which two statements about route summarization are true? (Choose two.)

- A. RIP, IGRP, and EIGRP can automatically summarize routing information at network address boundaries.
- B. EIGRP can automatically summarize external routes.
- C. The area range command can aggregate addresses on the ASBR.
- D. The summary-address command under the router process configures manual summarization on RIPv2 devices.
- E. The ip classless command enables classful protocols to select a default route to an unknown subnet on a network with other known subnets.

Answer: AE

NEW QUESTION 197

Refer to the exhibit.



If router R1 is configured to run IS-IS with given configuration and all interfaces are up/up, what action must you take so that the Ethernet 0/0 network can be advertised to potential IS-IS neighbors on the E0/1 interface?

- A. Configure the ip router isis command on R1's interface E0/1.
- B. Configure an NSAP address on R1.
- C. Add the network 10.10.30.1 0.0.0.0 command to the R1 IS-IS process.
- D. Add the network 10.10.20.1 0.0.0.0 command to the R1 IS-IS process.

Answer: A

NEW QUESTION 201

DRAG DROP

Drag and drop each Cisco Performance Monitor component from the left onto the matching statement on the right

class	associates a flow monitor and at least one class
flow exporter	associates a flow record and a flow exporter
flow monitor	attaches to an interface to monitor performance
flow policy	specifies filtering criteria
flow record	specifies the destination for monitored data
service-policy	specifies the key and nonkey fields to monitor

Answer:

Explanation:

flow monitor
flow record
service-policy
class
flow exporter
flow policy

NEW QUESTION 204

Which two statements about root guard are true? (Choose two)

- A. It allows unknown devices to participate in STP
- B. It automatically re-enables blocked ports
- C. It requires the administrator to manually re-enable ports that have been blocked
- D. It supports the errdisable-timeout command
- E. It automatically error-disables a port when PortFast is enabled
- F. It blocks BPDUs from unknown devices

Answer: CD

NEW QUESTION 205

DRAG DROP

Drag and drop the EIGRP query condition on the left to the corresponding action taken by the router on the right.

The EIGRP table is missing an entry for the route	A feasible successor is installed in the routing table, and a reply
The EIGRP table lists the querying router as the successor for	The router replies with the successor information
The querying router is the successor, and no feasible successor exists	The router replies to the query with an unreachable message
the EIGRP table has a successor	The router send a query on all interfaces except the interface that had the successor route

Answer:

Explanation:

The EIGRP table lists the querying router as the successor for
the EIGRP table has a successor
The EIGRP table is missing an entry for the route
The querying router is the successor, and no feasible successor exists

NEW QUESTION 209

Which two statements about BGP best-path selection are true? (Choose two)

- A. The weight attribute is advertised to peers
- B. A route that originates from iBGP peers is preferred
- C. The route with the highest local preference is preferred
- D. A route that originates from a router with a higher BGP router ID is preferred
- E. The route with the lowest MED is preferred
- F. The lowest weight advertised is preferred

Answer: CE

NEW QUESTION 212

DRAG DROP

Drag and drop each description from the left onto the corresponding IP multicast protocol on the right.

Answer:

Explanation:

NEW QUESTION 216

DRAG DROP

Drag and drop statement about QoS features on the left to the matching QoS feature on the right

Answer:

Explanation:

Traffic Policing
applied in both the inbound and outbound directions
may cause excessive TCP retransmission
configured in bits per second
Traffic Shaping
buffers and queues excess packets when traffic load exceeds the CIR
drops excess packets when traffic load exceeds the CIR
minimizes TCP retransmission

NEW QUESTION 217

Which command can you enter to disable logging for VTY lines?

- A. no logging console
- B. no logging trap
- C. no logging buffer
- D. no logging count
- E. no logging monitor

Answer: E

NEW QUESTION 222

DRAG DROP

Drag and Drop the OpenStack projects from the left onto their function on the right?

Neutron	provides connectivity for the VM
Nova	provides volume for the VM
Glance	provisions the VM
Cinder	provides the image for the VM

Answer:

Explanation:

Neutron	provides connectivity for the VM
Nova	provides volume for the VM
Glance	provisions the VM
Cinder	provides the image for the VM

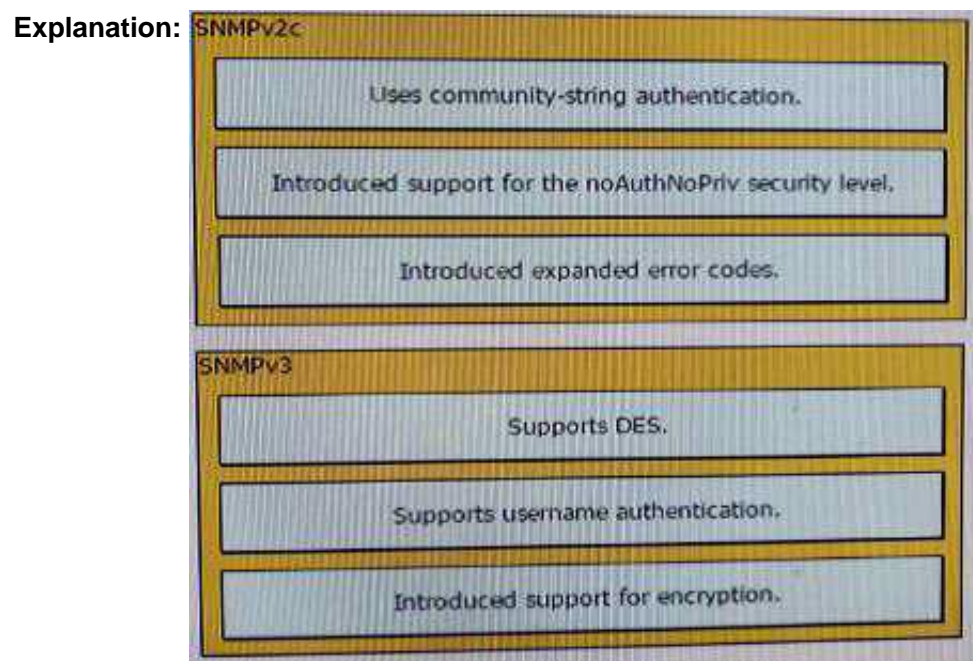
NEW QUESTION 225

DRAG DROP

Drag and drop each SNMP feature from the left onto the correct SNMP version on the right



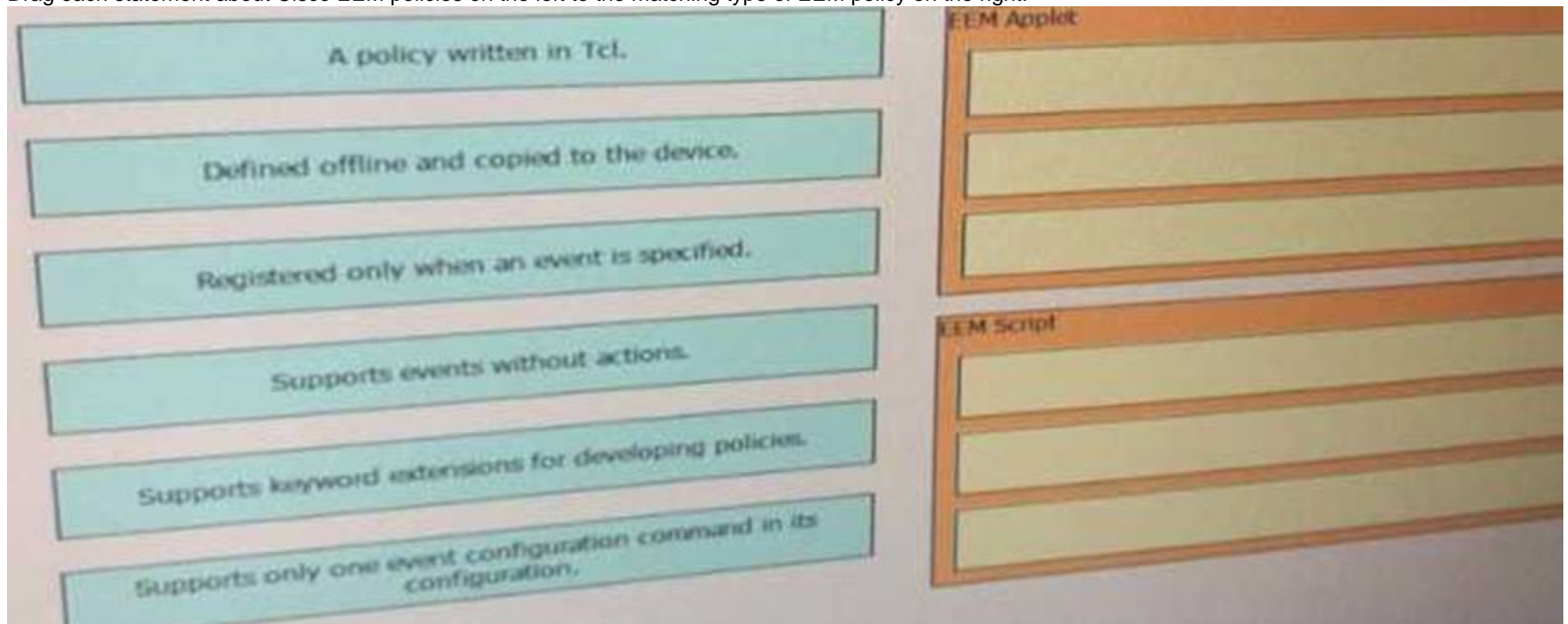
Answer:



NEW QUESTION 227

DRAG DROP

Drag each statement about Cisco EEM policies on the left to the matching type of EEM policy on the right.



Answer:

Explanation:

FEM Applet
Registered only when an event is specified.
Supports events without actions.
Supports only one event configuration command in its configuration.
FEM Script
A policy written Tcl.
Defined offline and copied to the device.
Supports keyword extension for developing policies.

NEW QUESTION 232

Which two options describe the effect of configuring an interface as passive under OSPF? (Choose two)

- A. The interface process OSPF hello packets and also sends hello packets
- B. An adjacency cannot be established, and the interface is included in the routing protocol update
- C. An adjacency cannot be established, and the interfaces is not included in the routing protocol update
- D. An adjacency can be established, and the interface is not included in the routing protocol update
- E. The interface processes OSPF hello packets but does not send hello packets

Answer: BE

NEW QUESTION 233

Which queuing strategy ignores packet markings?

- A. CQ
- B. FIFO
- C. LLQ
- D. WFQ
- E. WRED
- F. CBWFQ

Answer: B

NEW QUESTION 236

Which command can you enter to configure a Cisco router running OSPF to propagate the static default route 0.0.0.0 0.0.0.0 172.31.15.1 within the OSPF process?

- A. Default-information originate
- B. Redistribute static
- C. Redistribute static subnets
- D. Redistribute static metric 1 subnets

Answer: A

NEW QUESTION 238

When you implement CoPP on your network, what is its default action?

- A. Rate-limit bidirectional traffic to the control plane.
- B. Permit all traffic
- C. Block all traffic
- D. Drop management ingress traffic to the control plane.
- E. Monitor ingress and egress traffic to the control plane by using access groups that are applied to the interface

Answer: B

NEW QUESTION 241

Which two statements about OSPFv3 are true? (Choose two.)

- A. It supports unicast address families for IPv4 and IPv6.
- B. It supports unicast address families for IPv6 only.
- C. It supports only one address family per instance.
- D. It supports the use of a cluster ID for loop prevention.
- E. It supports multicast address families for IPv4 and IPv6.
- F. It supports multicast address families for IPv6 only.

Answer: AC

NEW QUESTION 246

Which problem can result when private AS numbers are included in advertisements that are sent to the global Internet BGP table?

- A. The prefixes sent with private AS numbers are always discarded on the Internet.
- B. The prefixes sent with private AS numbers are always tagged as invalid on the Internet.
- C. The prefixes sent with private AS numbers lack uniqueness, which can lead to a loss of connectivity.
- D. The prefixes sent with private AS numbers are sometimes tagged as invalid on the Internet.

Answer: C

NEW QUESTION 247

Which two statements about PIM snooping are true? (Choose two)

- A. Auto-RP traffic is not affected by PIM Snooping and is always flooded.
- B. Prune messages are forwarded to the router listed in the message payload.
- C. Join messages are flooded on all switch ports.
- D. Prune messages are flooded on all switch ports.
- E. Traffic for groups operating in dense mode is forwarded to the downstream routers.

Answer: AB

NEW QUESTION 249

In which scenario can you host the most instances on a server?

- A. Using microservices application
- B. Using virtual machines in containers
- C. Using only containers
- D. Using only virtual machines
- E. Using containers in virtual machines

Answer: C

NEW QUESTION 251

Which are three basic elements of Cisco Performance Monitor? (Choose three)

- A. master controller
- B. class
- C. SLA
- D. policy
- E. border router
- F. flow record

Answer: BDF

NEW QUESTION 254

Which two statements about PPP CHAP authentication are true? (Choose two)

- A. It supports clear-text passwords
- B. It uses a configured username and password to authenticate a host.
- C. It uses a secret password which is sent across the link for authentication
- D. It is a one-way authentication method. It is configurable only on PPP catout links

Answer: BD

NEW QUESTION 259

What mechanism should you choose to prevent unicast flooding?

- A. Configure the ARP cache timers to be longer than the switch forwarding cache (CAM) timers.
- B. Use control plane policing (CPP) to limit unicast flooding.
- C. Make sure that all end systems are connected to the network with a single physical connection.
- D. Configure the switch forwarding cache (CAM) timers to be longer than the ARP cache timers.

Answer: D

NEW QUESTION 260

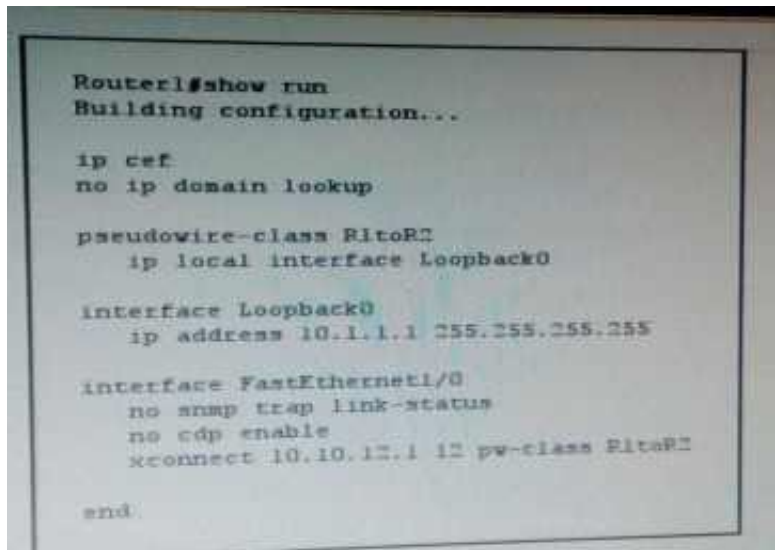
Which feature monitors and reports events and can take corrective action in response to events it observes?

- A. EEM
- B. Syslog
- C. IP Accounting
- D. NetFlow

Answer: A

NEW QUESTION 262

Refer to the exhibit.



```
Router1#show run
Building configuration...

ip cef
no ip domain lookup

pseudowire-class R1toR2
 ip local interface Loopback0

interface Loopback0
 ip address 10.1.1.1 255.255.255.255

interface FastEthernet1/0
 no snmp trap link-status
 no cdp enable
 xconnect 10.10.12.1 12 pw-class R1toR2

end
```

You are configuring Router 1 and Router 2 for L2TPv3 tunneling. Which two additional configurations are required to enable Router1 and Router 2 to establish the tunnel? (Choose two)

- A. Router1 must be configured to encapsulate traffic by using L2TPv3 under the pseudowire-class R1 to R2
- B. Cisco Discovery Protocol must be configured on interface FastEthernet 1/0 on router1
- C. An IP address must be configured on interface FastEthernet 1/0 on router1
- D. Loopback 0 on Router1 must be advertised to Router2
- E. Cisco Express Forwarding must be disabled on Router1

Answer: AD

NEW QUESTION 266

What value is used to determine the multicast designated forwarder on a segment?

- A. The unicast routing metric to the RP
- B. The device with the highest loopback address.
- C. The PIM priority setting on the interface.
- D. The device with the highest multicast routing distance to the sender.
- E. The device with the lowest loopback address.

Answer: A

NEW QUESTION 271

With which ISs will an IS-IS Level 1 IS exchange routing information?

- A. Level 1 ISs
- B. Level 1 ISs in the same area
- C. Level 1 and Level 2 ISs
- D. Level 2 ISs

Answer: B

NEW QUESTION 275

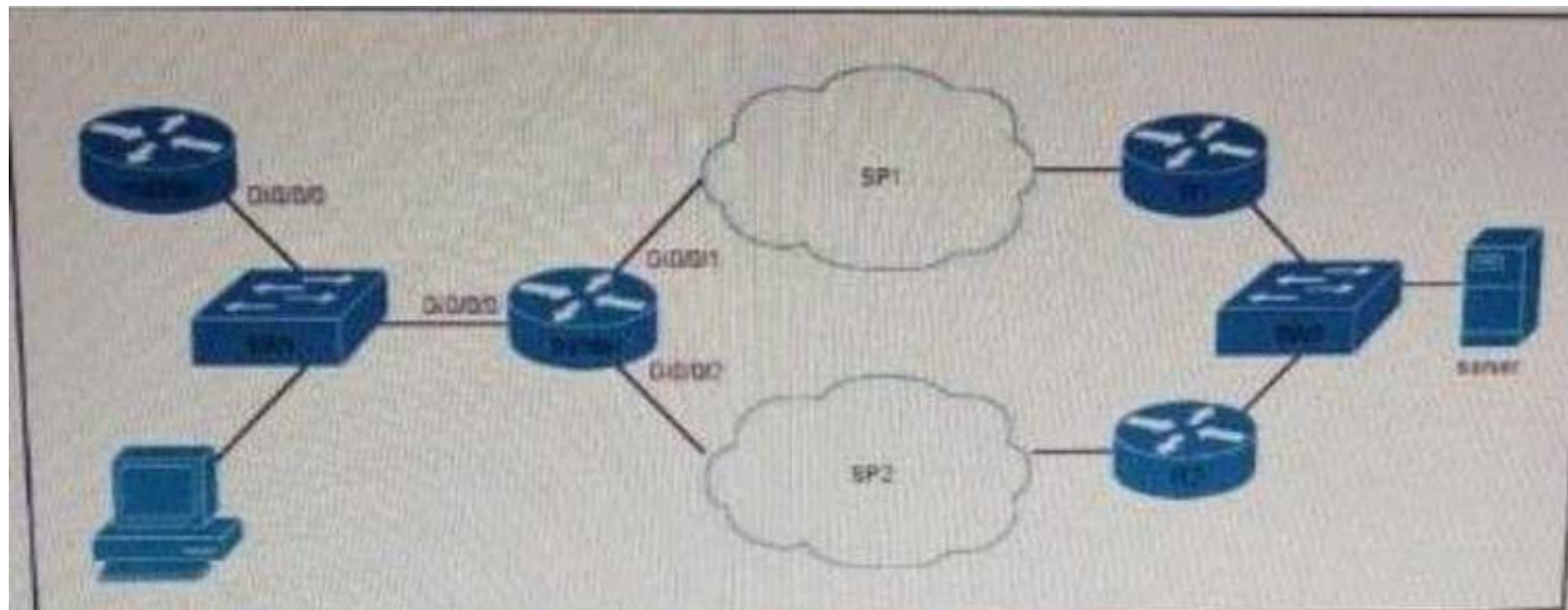
Which two options are mandatory components of a multiprotocol BGP VPN-IPv4 address? (Choose two)

- A. an area ID
- B. an IPv4 address
- C. a route distinguisher
- D. an MPLS label
- E. a system ID
- F. a route target.

Answer: BC

NEW QUESTION 279

Refer to the exhibit.



Which two configurations must you apply to the master controller and the border router to provision them? (Choose two)

A)

```
Master#
key chain PPR
key 0
key-string Cisco
pfr border
logging
local loopback 0
master 10.1.1.1 key-chain PPR
```

B)

```
Master#
key chain PPR
key 0
key-string Cisco
pfr master
logging
local loopback 0
master 10.1.1.3 key-chain PPR
interface GigabitEthernet0/0/1 internal
interface GigabitEthernet0/0/0 external
```

C)

```
Border#
key chain PPR
key 0
key-string Cisco
pfr border
logging
local loopback 0
master 10.1.1.1 key-chain PPR
```

D)

```
Master#
key chain PPR
key 0
key-string Cisco
pfr master
logging
border 10.1.1.3 key-chain PPR
interface GigabitEthernet0/0/0 internal
interface GigabitEthernet0/0/1 external
interface GigabitEthernet0/0/2 external
```

- A. Option A
- B. Option B
- C. Option C
- D. Option D

Answer: B

NEW QUESTION 281

Which two statements about IPv6 RA guard are true? (Choose two)

- A. It is supported in the ingress and egress directions
- B. It blocks unauthorized ICMPv6 Type 133 packets
- C. It blocks unauthorized ICMPv6 Type 134 packets
- D. It supports host mode and router mode
- E. It provides security for tunneled Ipv6 traffic

Answer: CD

NEW QUESTION 285

Which are two functions of the master controller in PfR? (Choose two)

- A. It learns the traffic path
- B. It perform traffic inspection
- C. It applies the policy
- D. It enforces the traffic path
- E. It provides network visibility

Answer: BD

NEW QUESTION 286

With PBR and set ip next-hop configured on an incoming interface, how does the router forward the packet with the next-hop being unreachable?

- A. The next hop is added to the route table and the packet is policy routed
- B. The packet is policy routed
- C. The packet is dropped
- D. The packet is forwarded using the normal routing table

Answer: D

NEW QUESTION 291

Which three basics types of SD-WAN deployment are out on the market? (Choose three)

- A. Managed service SD-WAN
- B. Policy-Based SD-WAN
- C. SD-WAN as-a-Service
- D. Internet-Based SD-WAN
- E. Secure SD-WAN service
- F. MPLS-based

Answer: CDE

NEW QUESTION 292

DRAG DROP

Drag each routing Protocol on the left to the matching statement on the right

BGP	Operates at Layer 2 via CDP.
EIGRP	Operates without using the IP protocol to carry routing messages.
IS-IS	Uses IP protocol 88.
OSPF	Uses IP protocol 89.
RIP	Uses TCP port 179.
	Uses UDP port 520.

Answer:

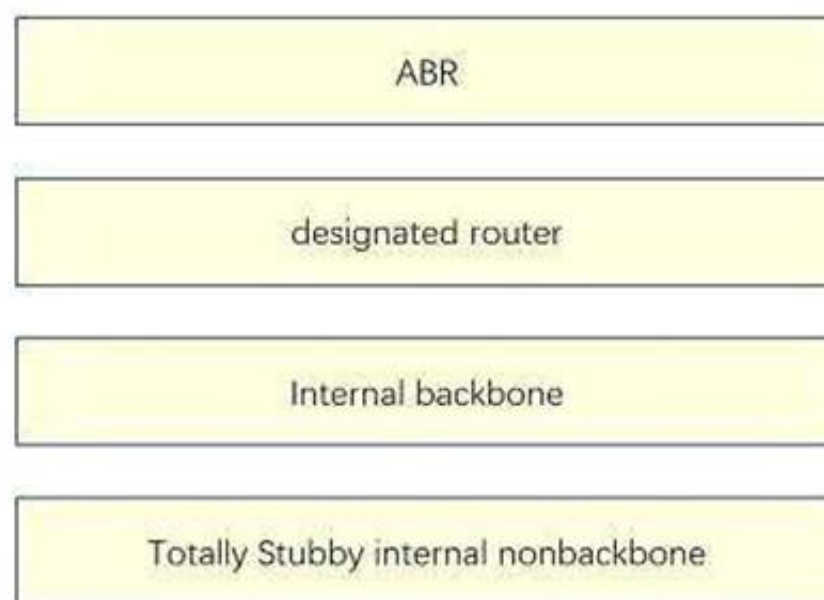
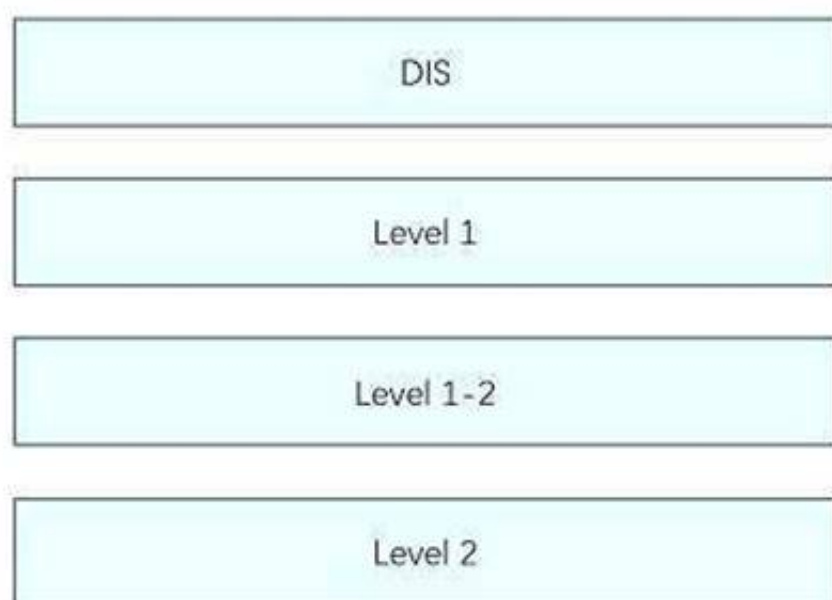
Explanation: CDR IS-IS, EIGRP, OSPF, BGP, RIP

NEW QUESTION 294

DRAG DROP

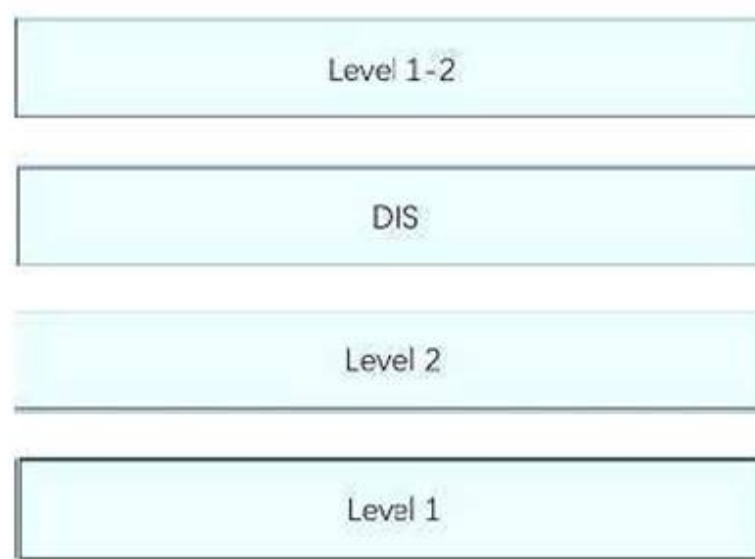
Drag and drop each IS-IS router type from the left onto the best matching OSPF router type on the right.

Select and Place:



Answer:

Explanation:



NEW QUESTION 295

Which three statements describe the characteristic of a VPLS architecture? (Choose Three)

- A. It can suppress the flooding of traffic.
- B. It replicate broadcast and multicast frames to multicast ports.
- C. IT forward Ethernet frames.
- D. It supports MAC address aging.
- E. It conveys MAC address reachability information in a separate control protocol.
- F. It maps MAC address destination to IP next hops

Answer: BCD

NEW QUESTION 296

Which set of commands conditionally advertises 172.16.0/24 as long as 10.1.10.10/32 is in the routing table?

A. Option

```
neighbor x.x.x.x advertise-map ADV exist-map EXT
route-map ADV
match IP address prefix-list ADV
!
route-map EXT
match IP address prefix-list EXT
!
ip prefix-list ADV permit 172.16.0.0/24
!
ip prefix-list EXT permit 10.10.10.10/32
```

B. Option

```
neighbor x.x.x.x advertise-map ADV exist-map EXT
route-map ADV
match IP address prefix-list ADV
!
route-map EXT
match IP address prefix-list EXT
!
ip prefix-list EXT permit 172.16.0.0/24
!
ip prefix-list ADV permit 10.10.10.10/32
```

C. Option

```
neighbor x.x.x.x exist-map EXT
route-map EXT
match IP address prefix-list ADV
match IP address prefix-list EXT
!
ip prefix-list ADV permit 172.16.0.0/24
!
ip prefix-list EXT permit 10.10.10.10/32
```

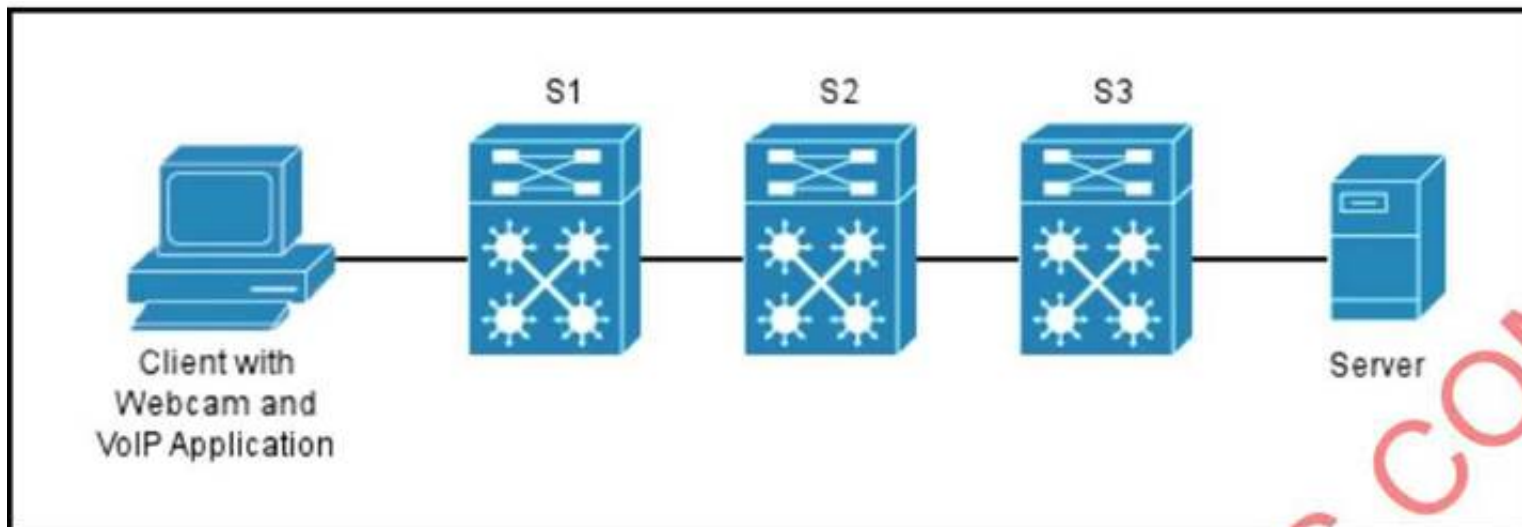
D. Option

```
neighbor x.x.x.x advertise-map ADV
route-map ADV
match IP address prefix-list ADV
match IP address prefix-list EXT
!
ip prefix-list ADV permit 172.16.0.0/24
!
ip prefix-list EXT permit 10.10.10.10/32
```

Answer: A

NEW QUESTION 300

You are configuring the S1 switch for the switchport connecting to the client computer. Which option describes the effect of the command `mls qos map cos-dscp 0 8 16 24 32 40 46 56`?



- A. Voice traffic is excluded from the default priority queue.
- B. Voice packets are given a class selector of 5.
- C. Video conferencing is marked CS3.
- D. Voice packets are processed in the priority queue

Answer: A

NEW QUESTION 304

DRAG DROP

Drag and drop the BGP attributes on the left to the correct category on the right. Not all options will be used.

community

Atomic-Aggregate

Aggregator

Cluster List

Next-Hop

MED

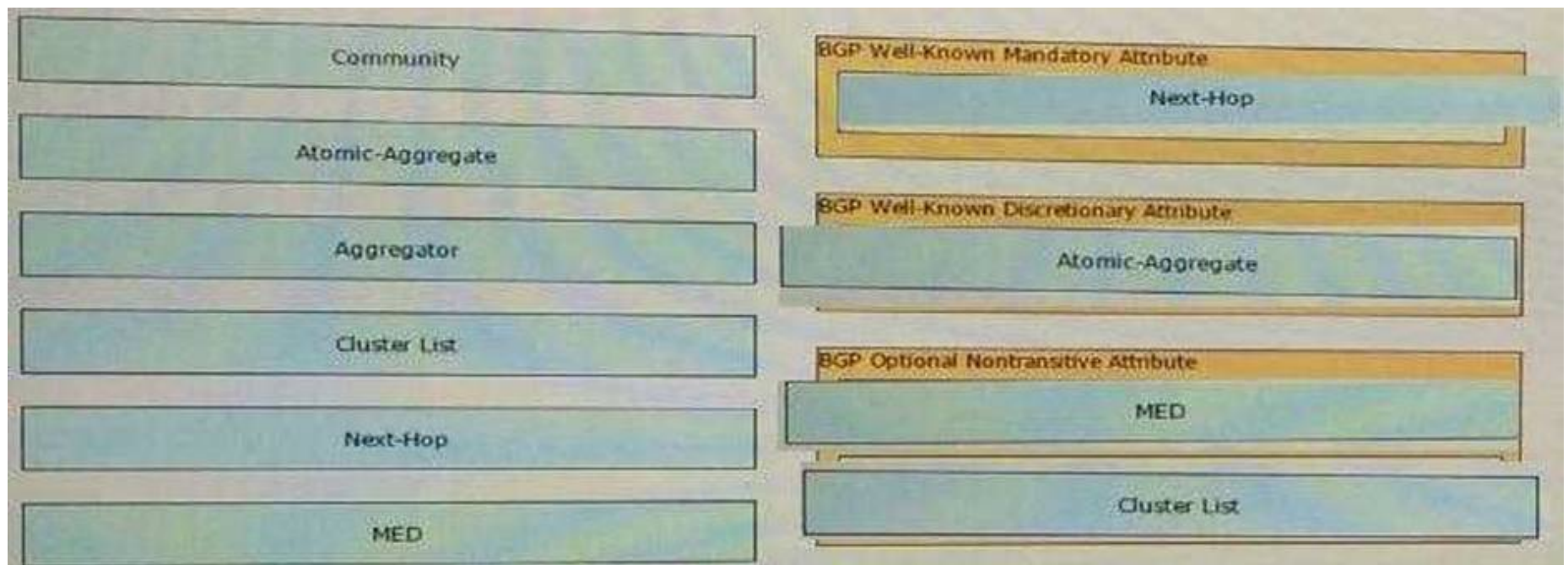
BGP well-known Mandate

BGP well-known discreti

BGP Optional Nontrans

Answer:

Explanation:



NEW QUESTION 308

Which PIM mode uses a shared tree only?

- A. Source-specific mode
- B. Sparse mode
- C. Bidirectional mode
- D. Dense mode

Answer: B

NEW QUESTION 312

When routing a multicast packet for a multicast group, what are two effects of having the ip pim sparse-dense-mode command configured on an interface?

- A. If the rendezvous point for the group is known, the packet will be forwarded over the interface according to sparse mode rules.
- B. If the rendezvous point for the group is unknown, the packet will be forwarded over the interface according to sparse mode rules.
- C. If the rendezvous point for the group is known, the packet will be forwarded over the interface according to the sparse-dense mode rules.
- D. If the rendezvous point for the group is unknown, the packet will be forwarded over the interface according to dense mode rules.
- E. If the rendezvous point for the group is unknown, the packet will be forwarded over the interface according to both sparse and dense mode rules.
- F. If the rendezvous point for the group is known, the packet will be forwarded over the interface according to dense mode rules.

Answer: AD

NEW QUESTION 314

Which three methods are valid RESTCONF methods? (Choose three)

- A. EDIT
- B. POST
- C. DELETE
- D. COPY
- E. CREATE
- F. GET

Answer: BCF

NEW QUESTION 316

Which description of Infrastructure as a Service is true?

- A. a cloud service that delivers on-demand resources like networking and storage
- B. a cloud service that delivers on-demand intranet connection between sites
- C. a cloud service that delivers on-demand software services on a subscription basis
- D. a cloud service that delivers on-demand Internet connection between sites

Answer: A

NEW QUESTION 320

Which statement correctly describes Ansible operations and playbooks?

- A. Ansible is agentless and uses playbooks formatted in YAML
- B. Ansible is agent-based and uses playbooks formatted in XML
- C. Ansible is agent-based and uses playbooks formatted in YAML
- D. Ansible is agentless and uses playbooks formatted in XML

Answer: A

NEW QUESTION 325

What is the identifying feature of an IPv6 multicast address?

- A. The binary value 11 appears as the first two characters of the address, followed by an arbitrary value.
- B. The hexadecimal value FFFF appears as the first four characters of the address, followed by an arbitrary value.
- C. The hexadecimal value FF appears as the first two characters of the address, followed by an arbitrary value
- D. The binary value 1111 appears as the first four characters of the address, followed by an arbitrary value.

Answer: D

NEW QUESTION 327

Which two statements about Bridge Assurance are true? (Choose two.)

- A. It can only be used on point to point links between switches.
- B. It is supported with both PVST+ and RPVST+.
- C. It is supported with both MST and RPVST+.
- D. It protects against bidirectional link failures
- E. When it is enabled devices send BPDUs out .ill network type ports except ports in Discarding state

Answer: AE

NEW QUESTION 328

Which feature must be enabled so that an IS-IS single topology can support IPv6 traffic?

- A. New-style TLVs only
- B. Adjacency checking
- C. Old-style TVLs only
- D. Extended metrics
- E. Both new-and old-style TLVs

Answer: B

NEW QUESTION 333

Which feature forces a new Diffie-Hellman key exchange each time data is transmitted over a IPsec tunnel?

- A. PFS
- B. rsa-encr authentication
- C. rsa-sig authentication
- D. 802.1x
- E. CRACK authentication

Answer: A

NEW QUESTION 337

Which two options are restrictions of BGP Outbound Route Filtering? (Choose two.)

- A. It requires access lists to match routes.
- B. It can be used only with eBGP.
- C. It can be used only with iBGP.
- D. It can be used only with IPv4 multicast.
- E. Multicast is not supported.

Answer: BE

NEW QUESTION 341

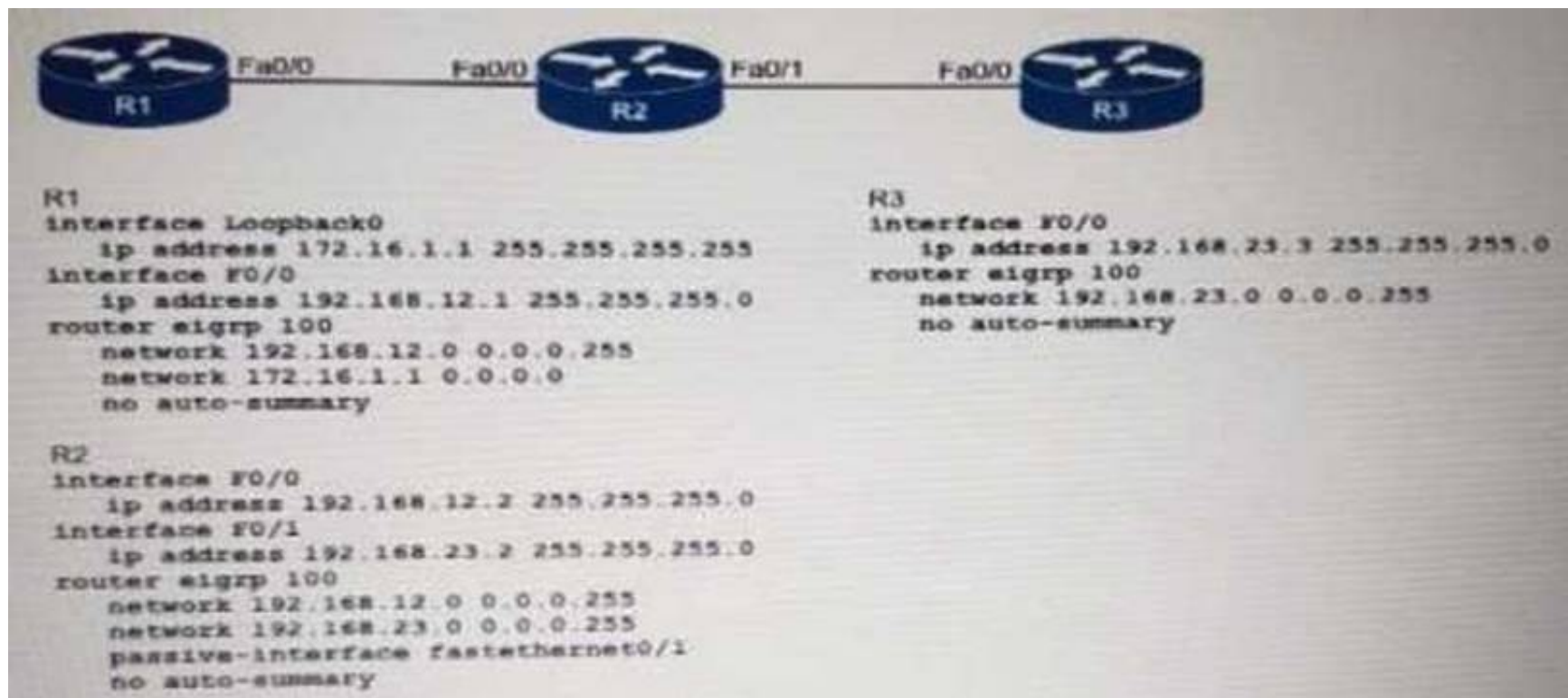
Which PIM feature allows the same multicast group address to be reused in different administrative domains?

- A. Proxy Registering
- B. IP Multicast Helper
- C. IP Multicast Boundary
- D. CGMP

Answer: B

NEW QUESTION 343

Refer to the exhibit. What are two effects of the given network configuration? (Choose two)



- A. R2 advertises the 192.168.23.0/24 network
- B. The 192.168.12.0/24 network is added to the R3 route table
- C. R1 and R2 fail to form an adjacency
- D. R2 and R3 fail to form an adjacency
- E. The 192.168.12.0/24 network is added to the R3 database
- F. R2 advertise the 192.168.12.0/24 network

Answer: AC

NEW QUESTION 344

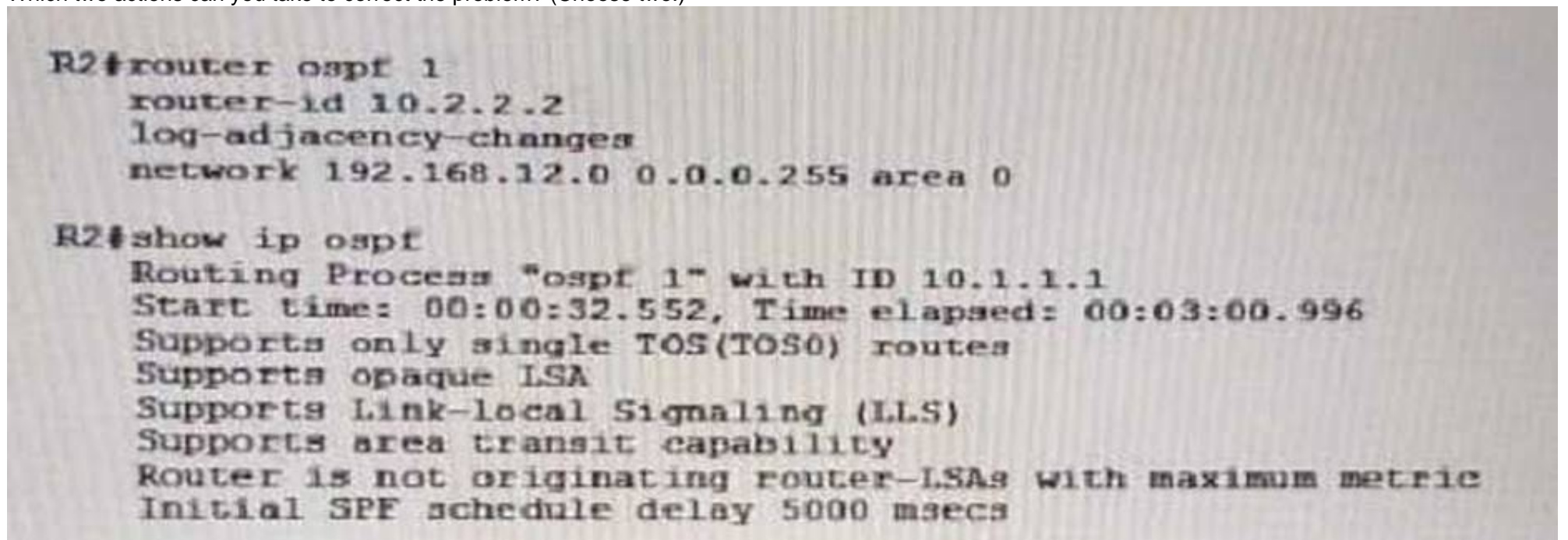
Which type of ACL can be applied only to Layer 2 ports?

- A. VLAN ACLs
- B. Dynamic ACLs
- C. Standard ACLs
- D. Port ACLs
- E. Reflexive ACLs

Answer: D

NEW QUESTION 348

Refer to the exhibit. After you applied a new configuration to router R2, you executed the show ip ospf command and noticed that the new router ID was missing. Which two actions can you take to correct the problem? (Choose two.)



- A. Issue the clear ip ospf command.
- B. Issue the clear ip route command.
- C. Wait for the hello-interval to elapse.
- D. Execute a shutdown followed by a no shutdown on the OSPF interfaces.
- E. Reload the router.
- F. Wait for the dead-interval to elapse.

Answer: AD

NEW QUESTION 349

Which two IP packet types always traverse to the route processor CPU? (Choose two)

- A. Data-plane packets
- B. Forwarding-plane packets
- C. Control-plane packets
- D. Services-plane packets
- E. Management-plane packets

Answer: CE

NEW QUESTION 351

DRAG DROP

Drag and drop each statement about IGMP from the left onto the correct IGMP version on the right

Answer:

Explanation:

NEW QUESTION 356

Which Cisco PfR monitoring mode is recommended for Internet edge deployments ?

- A. active throughput mode
- B. Active mode
- C. Passive mode
- D. Fast mode

Answer: C

NEW QUESTION 357

Which action does a switch running OpenFlow take when it receives a packet that does not match its flow entry?

- A. Drop the packet
- B. Transfer the packet
- C. Reject the packet
- D. Flood the packet
- E. Forward the packet to the controller

Answer: C

NEW QUESTION 358

Which two statements about IP packet fragmentation are true? (Choose two)

- A. Only dropped fragments are retransmitted
- B. The sender can prevent fragmentation by setting a flag in a packet's header
- C. CEF is capable of fragmenting packets
- D. Reassembling a packet causes increased CPU overhead on the receiver
- E. Fragmenting a packet can decrease the CPU overhead on the transmitting router

Answer: CE

NEW QUESTION 359

Which IS-IS router becomes adjacent to all other routers on a broadcast network?

- A. DR
- B. Level1/Level 2 Intermediate System
- C. ABR
- D. DIS

Answer: D

NEW QUESTION 364

Which three IPv6 tunneling rely on embedding the IPv4 address of a tunnel endpoint into the IPv6 address? (Choose three)

- A. 6to4
- B. GRE
- C. 6RD
- D. ISATAP
- E. Static IPv6-in-IPv4
- F. DMVPN

Answer: ADE

NEW QUESTION 366

Which two conditions would independently allow a port to achieve fast convergence when migrating to RSTP? (Choose two)

- A. It must connect to link recognized as shared
- B. It must be recognized as an edge port
- C. It must have BPDU guard enabled
- D. It must have BPDU guard disabled
- E. It must be a root port
- F. It must connect to a link recognized as point-to-point

Answer: BC

NEW QUESTION 367

Which three elements compose a network entity title? (Choose three.)

- A. area ID
- B. domain ID
- C. system ID
- D. NSAP selector
- E. MAC address
- F. IP address

Answer: AC

NEW QUESTION 371

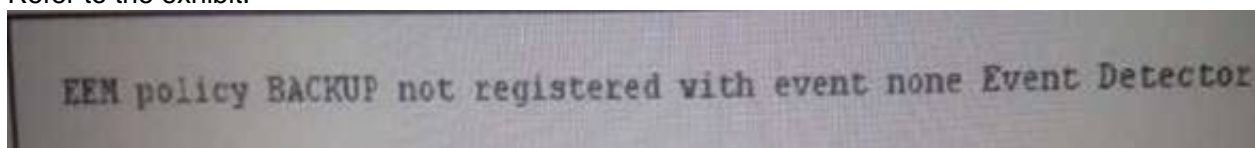
Which option describes how a router responds if LSA throttling is configured and it receives the identical LSA before the interval is set?

- A. The LSA is ignored
- B. The LSA is ignored and a notification is sent to the sending router to slow down its LSA packet updates
- C. The LSA is added to the OSPF database
- D. The LSA is added to the OSPF database and a notification is sent to the sending router to slow down its LSA packet updates

Answer: A

NEW QUESTION 373

Refer to the exhibit.



When it attempted to register the EEM script, the device returned this error message. Which action can you take to correct the problem?

- A. Configure the event action to run the applet.
- B. Configure the event manager run command to register the event.
- C. Configure the event none command so that the event can be triggered manually.
- D. Configure the end command at the end of the BACKUP EEM policy.

Answer: B

NEW QUESTION 374

Which tool or program is a version control system?

- A. Git
- B. Logstash
- C. Travis CI
- D. Jenkins
- E. SmartC

Answer: D

NEW QUESTION 378

Which automation tool is written in Python?

- A. CFEngine
- B. Pupper
- C. Chef
- D. Vagrant
- E. Ansible

Answer: E

NEW QUESTION 381

An employee at a targeted company downloads an IoT software update from a vendor's site that has been compromised with a Trojaned software update. What kind of threat is this considered as?

- A. Sophisticated actors threat
- B. Social engineering
- C. Outside threat
- D. Inside threat

Answer: B

NEW QUESTION 382

What does Cisco Fog Computing provide to the IoT solution?

- A. Provides scalability
- B. It reduces latency and required bandwidth
- C. Enables remote access to individual IoT components
- D. Enable IaaS

Answer: C

NEW QUESTION 385

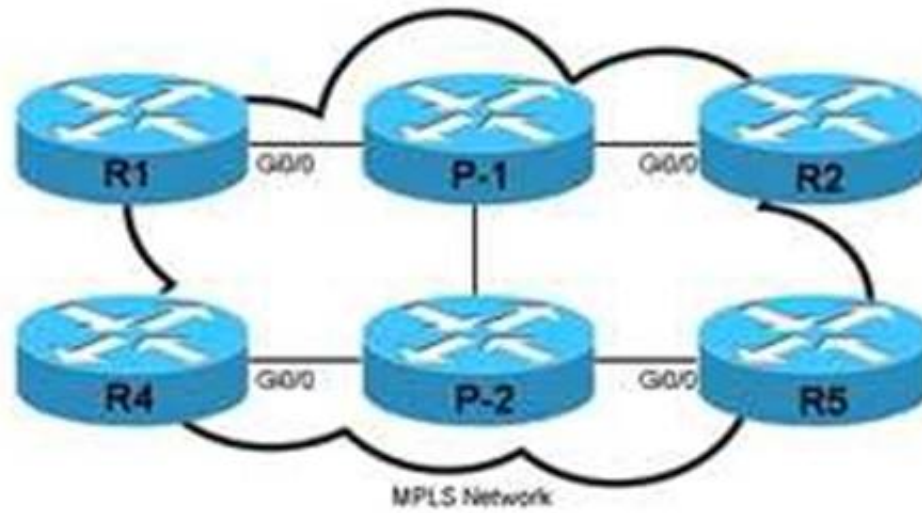
Which two statements about route summarization are true?

- A. It can be disabled in RIP, RIPv2, and EIGRP
- B. EIGRP and RIPv2 route summarization are configured with the ip summary-address command under the route process
- C. EIGRP can summarize routes at the classful network boundary
- D. RIPv2 can summarize routes beyond the classful network boundary

Answer: C

NEW QUESTION 387

Refer to the exhibit.



```
R1
ip access-list standard LOOPBACK-ONLY
 permit 172.16.1.0 0.0.0.255
interface loopback0
 ip address 172.16.1.1 255.255.255.255
interface GigabitEthernet0/0
 ip address 10.0.0.1 255.255.255.0
 load-interval 30
 mpls ip
router ospf 1
 router-id 172.16.1.1
 network 10.0.0.1 0.0.0.0 area 0
 network 172.16.1.1 0.0.0.0 area 0
 mpls ldp neighbor 172.16.99.1 password cisco
 mpls ldp discovery targeted-hello accept
 mpls ldp advertise-labels for LOOPBACK-ONLY
```

```
R5
ip access-list standard LOOPBACK-ONLY
 permit 172.16.1.0 0.0.0.255
 permit 10.0.0.0 0.255.255.255
int loopback0
 ip address 172.16.99.1 255.255.255.255
interface GigabitEthernet0/0
 ip address 10.0.0.2 255.255.255.0
 load-interval 30
 mpls ip
router ospf 1
 router-id 172.16.99.1
 network 10.0.0.1 0.0.0.0 area 0
 network 172.16.99.1 0.0.0.0 area 0
 mpls ldp neighbor 172.16.1.1 password cisco
 mpls ldp discovery targeted-hello accept
 mpls ldp advertise-labels for LOOPBACK-ONLY
```

Which two options are two problems that can occur with this configuration? (Choose two)

- A. The MPLS path from R1 to R5 becomes unreachable.
- B. R1 and R5 are unable to establish an LDP relationship.
- C. The label for the R1 loopback address is filtered from other MPLS routers.
- D. The label for the R5 loopback address is filtered from other MPLS routers.
- E. MPLS traffic from R1 to R5 takes a suboptimal path.

Answer: AD

NEW QUESTION 389

DRAG DROP

Drag each set action for policy-based routing on the left to the matching statement on the right

default next-hop	used for QoS
DF	used for traffic to a destination without an explicit route
next-hop	used for traffic whose next hop is to a non-adjacent router
next-hop recursive	used to override the routing table's adjacency selection
precedence	used to troubleshoot tunneling issues

Answer:

Explanation:

E-1,
A-2,
D-3,
C-4,
B-5

NEW QUESTION 390

RIPv2 automatically summarizes IPv4 routes on classful boundaries. Which boundaries does it use for automatic summarization of IPv6 routes?

- A. IPv6 is classless and automatic summarization is not done.
- B. Automatic summarization of IPv6 routes is disabled by default and the boundaries must be specified when it is enabled.
- C. Automatic summarization of IPV6 routes is done at the 32 bits (/32), 48 bits (/48) and 64 bits (/64) boundaries.
- D. IPv6 routes are automatically summarized on octet boundaries

Answer: C

NEW QUESTION 391

.....

Thank You for Trying Our Product

* 100% Pass or Money Back

All our products come with a 90-day Money Back Guarantee.

* One year free update

You can enjoy free update one year. 24x7 online support.

* Trusted by Millions

We currently serve more than 30,000,000 customers.

* Shop Securely

All transactions are protected by VeriSign!

100% Pass Your 400-101 Exam with Our Prep Materials Via below:

<https://www.certleader.com/400-101-dumps.html>