

Exam Questions 352-001

CCDE Written Exam

<https://www.2passeasy.com/dumps/352-001/>



NEW QUESTION 1

You have been asked to design a wireless network solution that will implement context-aware services on an existing network that was initially deployed for data traffic only. Which two design principles would you follow to increase the location accuracy with the least possible impact on the current setup? (Choose two.)

- A. Use directional antennas to provide better cell separation.
- B. Add access points along the perimeter of the coverage area.
- C. Install additional APs in monitor mode where the co-channel interference would otherwise be affected.
- D. Increase the AP density to create an average inter-access point distance of less than 40 ft. | 12.2 meters
- E. Fine tune the access point's radio configuration to have a higher average transmission power to achieve better coverage.

Answer: AD

NEW QUESTION 2

Refer to the exhibit.

```

1 {
2   "response": [
3     {
4       "id": "8f41bef8-698c-4701-af14-471e910ed9ff",
5       "hostMac": "00:50:56:8A:27:A3",
6       "hostIp": "40.0.5.12",
7       "hostType": "WIRED",
8       "connectedNetworkDeviceId": "7895a45f-47aa-42ee-9d06-c66d3b784594",
9       "connectedNetworkDeviceIpAddress": "40.0.2.18",
10      "connectedInterfaceId": "30bb14c1-8fb6-45c4-8f6d-5b845a7f448c",
11      "connectedInterfaceName": "GigabitEthernet2/0/2",
12      "vlanId": "1",
13      "lastUpdated": "September 29, 2014 1:54:13 PM PDT",
14      "numUpdates": 1,
15      "userStatus": "Active",
16      "source": 200
17    }
18  ],
19  "version": "0.0"
20 }

```

Which data format is used in this REST API call?

- A. JSON
- B. HTMLv5
- C. HTML
- D. XML
- E. BASH

Answer: A

NEW QUESTION 3

DRAG DROP

Drag and drop the design characteristics of GET VPN from the left to the right. Not all options are used.

It simplifies encryption key management while supporting routing, QoS, and multicast.	Target 1
It provides encryption, but not authentication.	Target 2
It supports native multicast across MPLS and private IP networks.	Target 3
It offers scalable, full meshing for IPsec VPNs.	

- A. Mastered
- B. Not Mastered

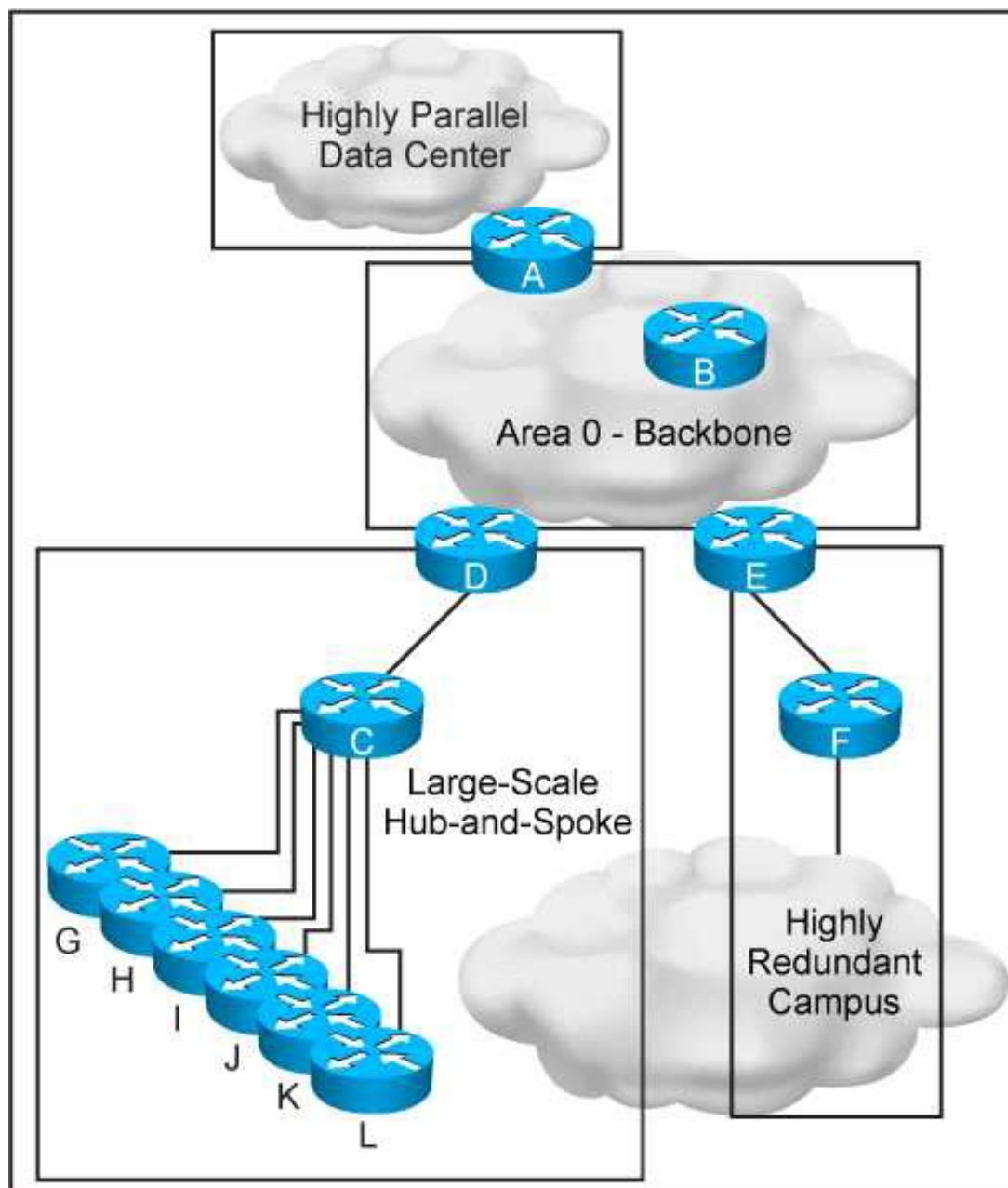
Answer: A

Explanation:

A, C, D

NEW QUESTION 4

Refer to the exhibit.



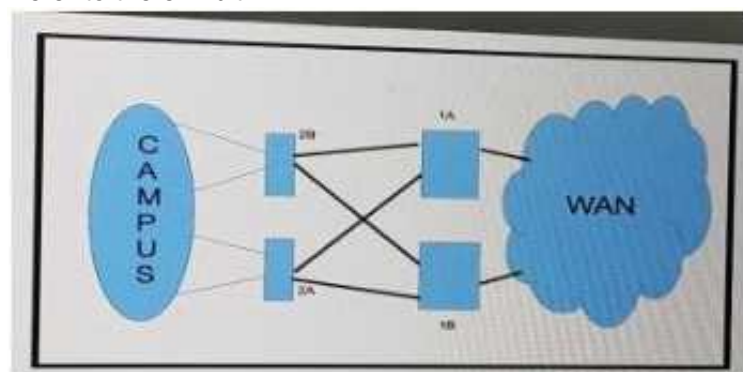
This new OSPF network has four areas, but the hub-and-spoke area experiences frequent flapping. In order to fix this design failure, which two mechanisms can you use to isolate the data center area from the hub-and-spoke area without losing Ip connectivity? (Choose two)

- A. Use OSPF distribute-list filtering on router A
- B. Deploy a prefix summarization on router D
- C. Make the data center area a NSSA
- D. Make the data center area totally stub
- E. Convert the data center area to EIGRP protocol

Answer: BD

NEW QUESTION 5

Refer to the exhibit.



How should you redesign this network running BGP to improve availability of the routers 1A and 1B at the core site?

- A. Deploy BGP PIC
- B. Use link bundles over multiple slots
- C. Enable graceful restart
- D. Create a multichassis system with the two routers

Answer: A

NEW QUESTION 6

Which statement about TAP and TUN devices, which are used in a Linux/KVM cloud deployment model, is true?

- A. TUN is for handling IP packets, but TAP is for handling Ethernet frames
- B. TUN is for handling Ethernet frames, but TAP is for handling IP packets
- C. TUN is for tunneling IP packets, but TAP is for tapping IP packets
- D. TUN is for tunneling Ethernet frames, but TAP is for tapping Ethernet frames

Answer: A

NEW QUESTION 7

What is a design application of control plane policing?

- A. CPP protects the control plane from reconnaissance and or denial-of-service attacks
- B. CPP protects the forwarding plane by rate –limiting excessive routing protocol traffic
- C. CPP protects the forwarding plane by allowing legitimate traffic and dropping excessive traffic
- D. CPP drop malformed packet that are sent to the CPU

Answer: A

NEW QUESTION 8

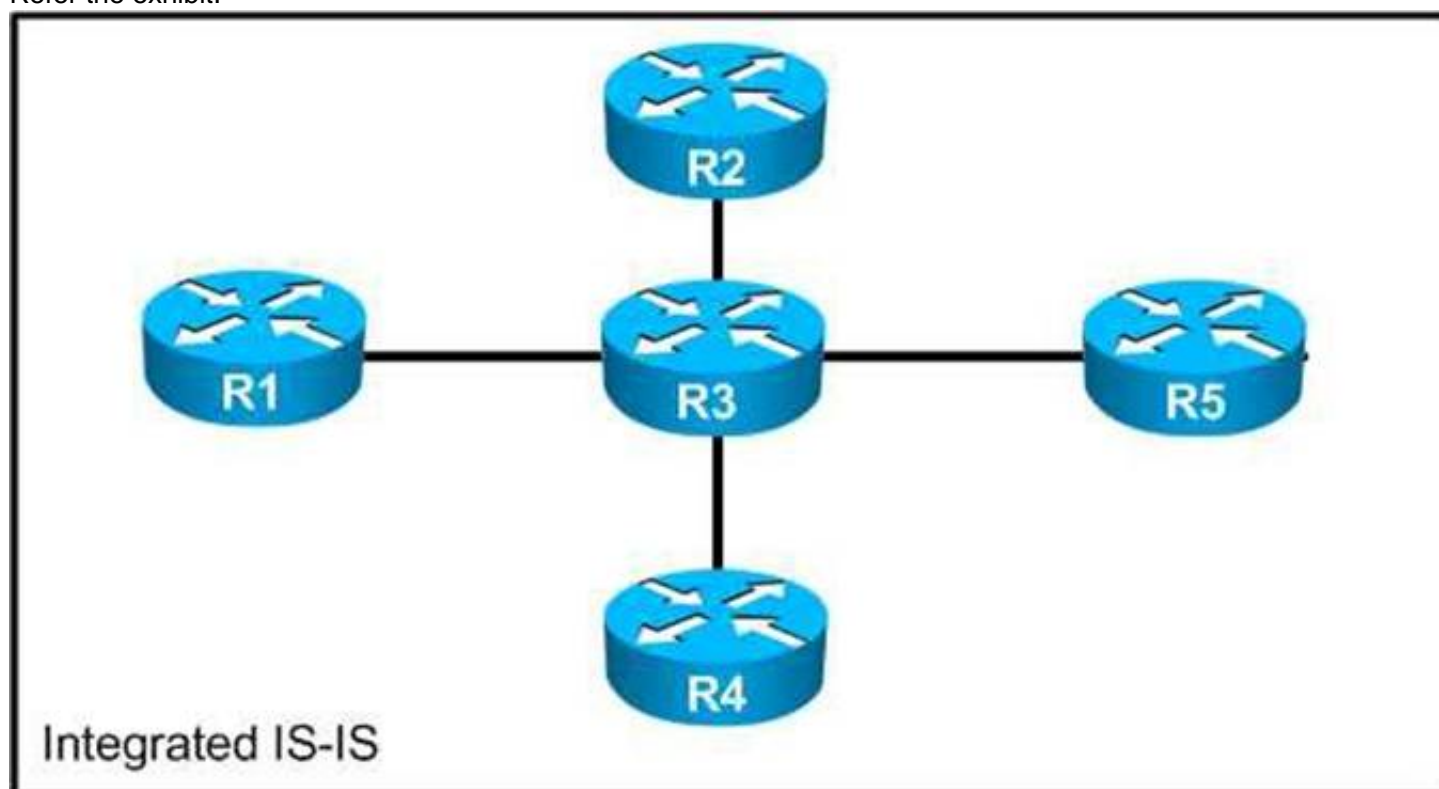
A regional ISP is running MPLS TE. These tunnels are configured manually using paths. Which technology centralizes the traffic engineering decisions to reduce operational complexity?

- A. BGP Link State
- B. DiffServ-TE
- C. TE autobandwidth
- D. Shared Risk link Group

Answer: C

NEW QUESTION 9

Refer the exhibit.



You have designed a IPv6 migration plan, and now you need to determine the impact on the existing IPv4 network. Which is likely to happen when you enable IPv6 routing on the link between R3 and R2, starting at R3?

- A. R3 advertises the link from R3-R2 to R1, R4 and R5 only.
- B. R2 receives an IPv6 default route from R3.
- C. Only R3 and R2 have IPv4 and IPv6 reachability.
- D. Loopback reachability between all routers for IPv4 is lost.
- E. All routers except R2 are reachable through IPv4.

Answer: D

NEW QUESTION 10

In a routed access hierarchical campus design, the access-to-distribution Layer 2 uplink trunks are replaced with Layer 3 point-to-point routed links. Why is it recommended that VLANs are confined on a single access switch rather than span across multiple access switches?

- A. to allow for better convergence time
- B. to prevent the occurrence of Layer 2 loops
- C. to allow for fault isolation
- D. to prevent routing black holes

Answer: D

NEW QUESTION 10

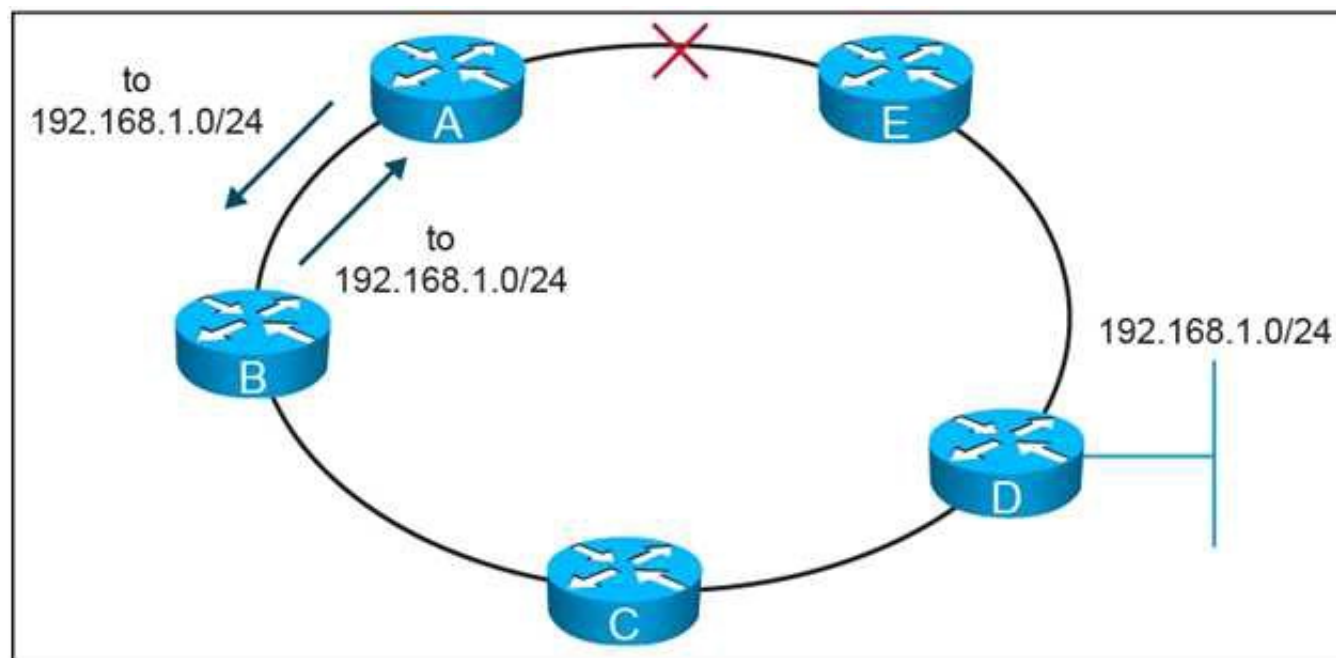
Which option is a design consideration when using routers in a distributed hardware architecture?

- A. Routing information is stored in the RIB and the FIB makes forwarding decisions as programmed on the line card hardware
- B. After a link failure occurs in the core, the RIB continues to forward the traffic while FIB convergence is in progress
- C. BGP routes are stored in the RIB and IGP routes are stored in the FIB
- D. IP routes are stored in the RIB and MPLS labels are stored in the FIB

Answer: A

NEW QUESTION 11

Refer to the exhibit.



On this MPLS-based network ring, links have failed between router A and router E. These failures formed microloops while the network converged, when A forwarded traffic to B but B forwards it back to

- A. Which technology is the simplest solution to avoid microloops without enabling a new protocol in the network?
- B. TE Fast ReRoute
- C. IP Fast ReRoute
- D. Loop-Free Alternate
- E. Remote Loop-Free Alternate

Answer: D

NEW QUESTION 14

Which two techniques are used in an OSPF network design to slow down the distribution of topology information caused by a rapidly flapping link? (Choose two)

- A. LSA throttling
- B. SPF throttling
- C. IP event dampening
- D. Link-state incremental SPF
- E. Link-state partial SPF

Answer: AC

NEW QUESTION 17

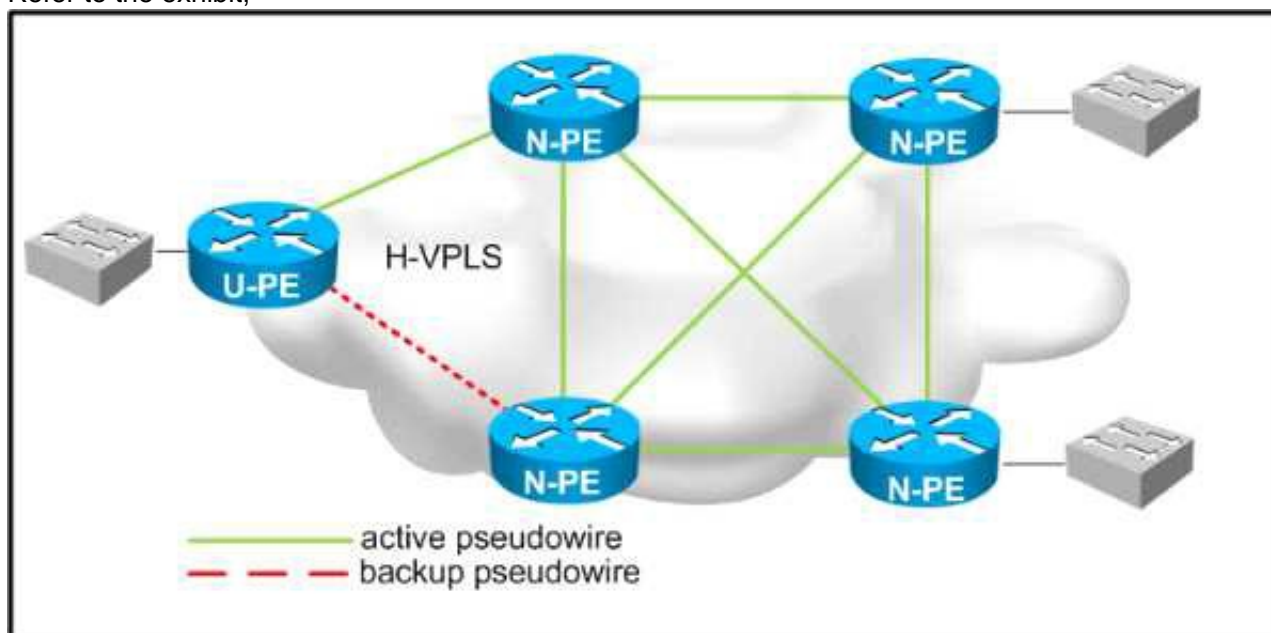
You are designing an optical network. Your goal is to ensure that your design contains the highest degree of resiliency. In which two ways should you leverage a wavelength-switched optical network solution in your network design? (Choose two.)

- A. a wavelength-switched optical network guarantees restoration based strictly on the shortest path available
- B. a wavelength-switched optical network provides fault tolerance for single failures only
- C. a wavelength-switched optical network takes linear and nonlinear optical impairment calculation into account
- D. a wavelength-switched optical network assigns routing and wavelength information
- E. a wavelength-switched optical network eliminates the need for dispersion compensating units in a network

Answer: CD

NEW QUESTION 22

Refer to the exhibit,



Which two design considerations should be implemented on the pseudowire between N-PE and U-PE routers for a loop-free hierarchical VPLS service? (Choose two)

- A. Disable split horizon towards the U-PE router.
- B. Disable MAC learning on the U-PE router.
- C. Enable split horizon towards the N-PE routers.
- D. Disable MAC learning on the U-PE routers.
- E. Disable MAC learning on the U-PE routers.
- F. Enable split horizon towards the U-PE routers.
- G. Disable split horizon toward the N-PE routers.

Answer: AC

NEW QUESTION 26

You are designing a WAN network solution with EIGRP based on VPLS. The interface speed is 10Mb/s, but the access rate of the WAN connection is 256 Kb/s. What should you include in the network design, in order to avoid potential issues with EIGRP?

- A. Limit EIGRP traffic to the access rate with a policer.
- B. Tag outbound EIGRP traffic and have the WAN provider add it to the priority queue.
- C. Limit traffic to the access rate with interface traffic shaping.
- D. Set the interface bandwidth to match the access rate.

Answer: D

NEW QUESTION 27

Which two design aspects should a metro service provider consider when planning to deploy REP for his backbone? (Choose two.)

- A. Two REP segments can be connected redundantly at two points, one connection will be blocked as per the STP defined in IEEE 802.1d.
- B. UDLD can be enabled on REP interfaces to detect unidirectional failures.
- C. The guaranteed convergence recovery time is less than 50 ms for the local segment.
- D. A REP segment is limited to a maximum of seven devices.
- E. VLAN load balancing for optimal bandwidth usage is supported in any REP segment.

Answer: BE

NEW QUESTION 30

A company would like to distribute a virtual machine (VM) hosting cluster between three data centers with the capability to move VMs between sites. The connectivity between data centers is IP only and the new design should use the existing WAN. Which Layer 2 tunneling technology do you recommend?

- A. AToM
- B. L2TPv3
- C. OTV
- D. VPLS

Answer: C

NEW QUESTION 31

You are consultant network designer for a large GET VPN deployment for a large bank with International coverage. Between 1800 and 2000 remote locations connect to the central location through four hubs using an MPLS backbone and using two keys servers. The bank is concerned with security and replay attacks. Which two actions should you use to tune the GET VPN to meet the bank requirements? (Choose two)

- A. Increase the cryptographic key size.
- B. Replace unicast rekey with multicast rekey.
- C. Reduce the SAR clock interval duration
- D. Increase the TEK and KEK lifetime.
- E. Reduce the Dead Peer Detection periodic timer.

Answer: BC

NEW QUESTION 36

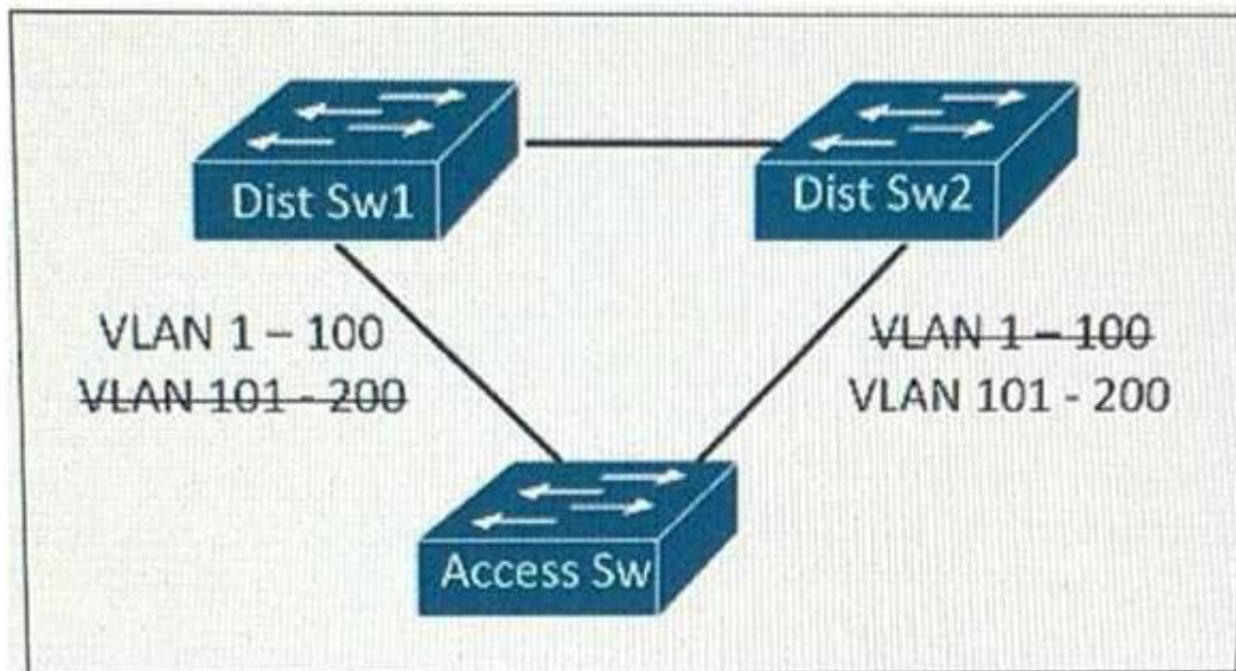
What is a correct design consideration of IPv6 MLD snooping?

- A. MLD snooping conserves bandwidth on switches.
- B. MLD snooping is used to filter all MLD queries.
- C. MLD snooping requires IGMP snooping to be implemented.
- D. MLD snooping conserves CPU by sharing IPv4 and IPv6 multicast topology.

Answer: A

NEW QUESTION 39

Refer to the exhibit.



This layer 2 network is expected to add 150 VLANs over the next year, In addition to the existing 50 VLANs within the network which STP types will support this design requirement the least amount of CPU resource and achieving load balancing?

- A. PVST+
- B. CST
- C. MST
- D. RSTP

Answer: C

NEW QUESTION 41

Which two are IoT sensor-specific constraints? (Choose two)

- A. Memory
- B. Processing power
- C. The amount of devices
- D. Cooling
- E. Standard transport protocols

Answer: CE

NEW QUESTION 46

ACME Agricultural requires that access to all network devices is granted based on identify validation, and an authentication server was installed for this purpose. Currently the network team uses a list of passwords based on regions to access the internal corporate network devices. Which protocol do you recommend to ensure identify validation from the authentication server to the corporate directory?

- A. HTTPS
- B. TACACS+
- C. SSH
- D. LDAP

Answer: D

NEW QUESTION 49

A large enterprise network has two data centers and a WLAN edge with a large hub-and spoke network. The complete network is configured as a single OSPF area, and spoke routers are connected to unreliable WAN links. Which two changes should you make to deploy LSA on the spoke routers? (Choose two)

- A. Place spoke routers in stub areas
- B. Make the hub routers ABR
- C. Make the hub routers ASBR
- D. Place spoke routers in totally stubby areas
- E. Keep the spoke routers in normal areas

Answer: BD

NEW QUESTION 53

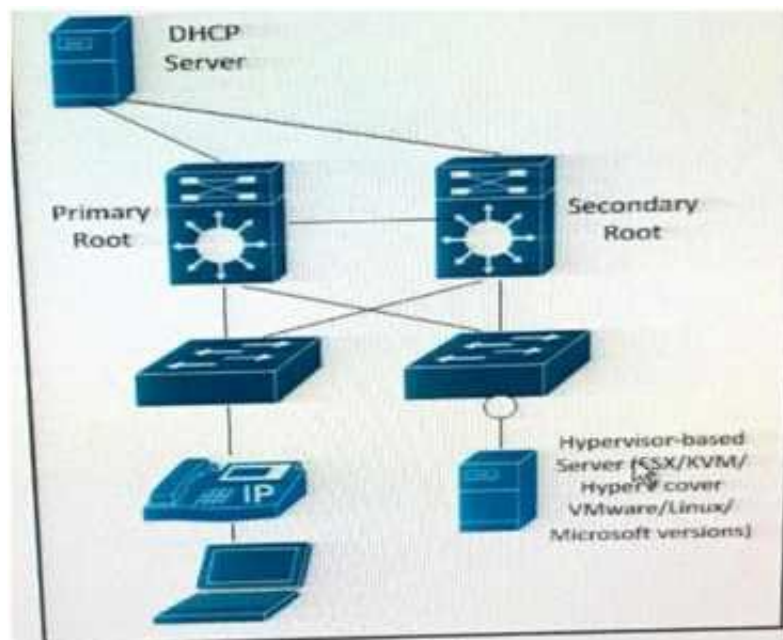
Why is a redundant PIM stub router topology a bad network design decision?

- A. Multicast convergence takes long
- B. Multicast traffic duplication will occur
- C. It interferes with IGMP snooping
- D. It interfaces with PIM snooping

Answer: B

NEW QUESTION 54

Refer to the Exhibit.



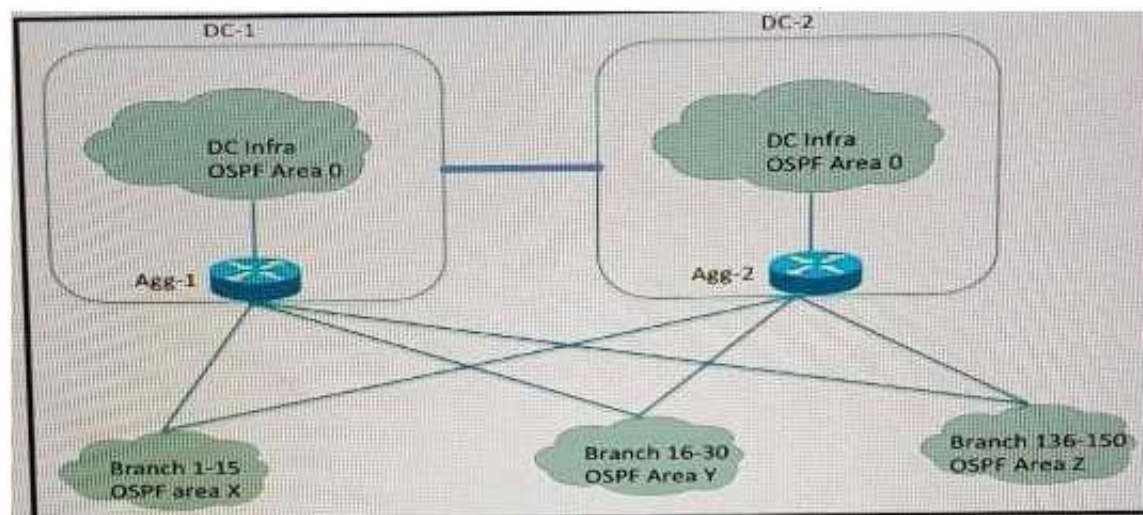
The server is running multiple VLANs on its NIC. Which two Layer 2 features should be applied to the network location identified by a circle? (Choose two)

- A. UDLD
- B. BPDU guard
- C. BPDU filtering
- D. Port Fast
- E. Loop guard
- F. PortFast trunk

Answer: BF

NEW QUESTION 58

Refer to the exhibit



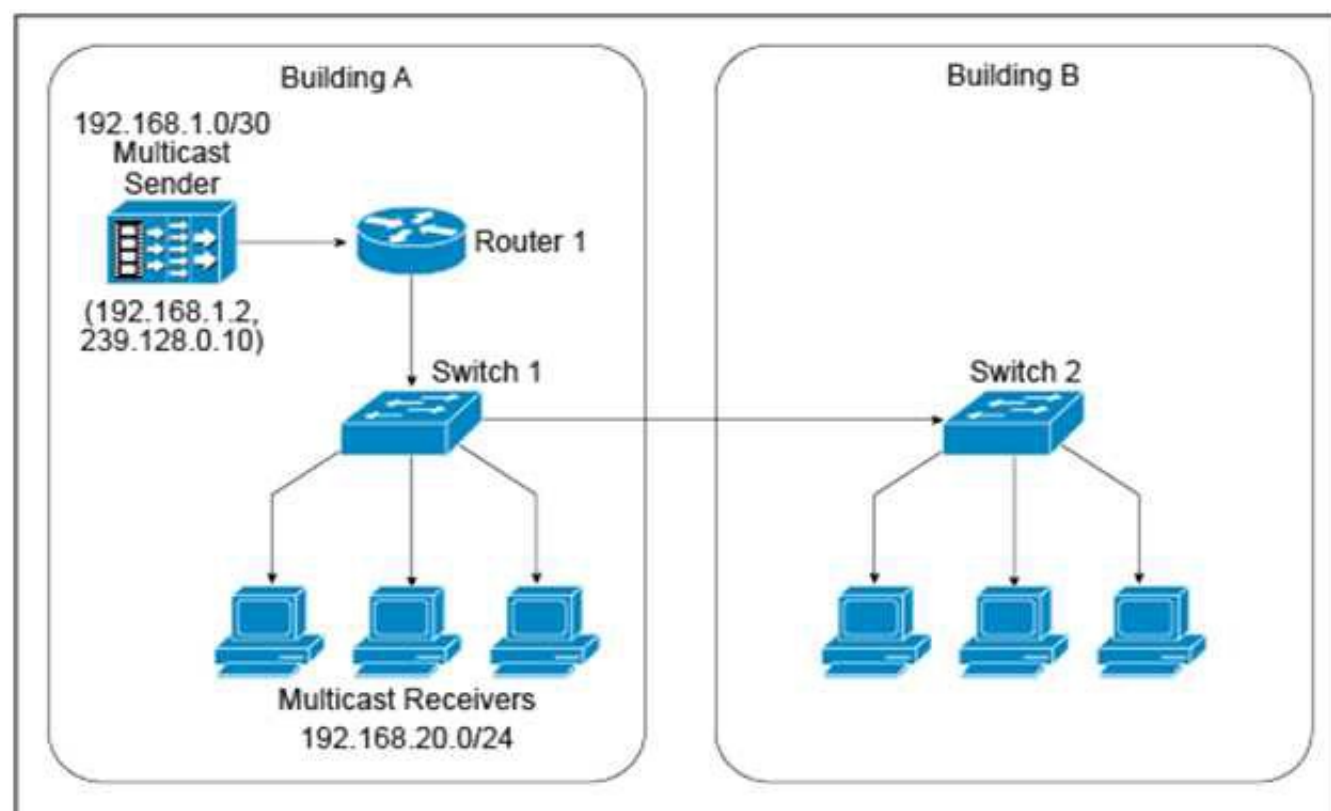
company xyz has 150 branch location across the U.S. Each branch is connected to two aggregation router one router in each data center The network is configured with Multiple OSPF with multiple OSPF areas and the aggregation router are ABRs A requirement is to keep an optimal path to the data centers and at the same time reduce the LSA propagation and SPF recomputation during a change in any part of the network Which design elements should be included on the aggregation router?

- A. OSPF NSSA
- B. distribute lists
- C. OSPF summarization
- D. OSPF totally stubby area

Answer: C

NEW QUESTION 59

Refer to the exhibit.



A new IPv4 multicast-based video-streaming service is being provisioned. During the design- validation tests, you realize that the link between the two buildings is carrying multicast traffic even when there are no receivers connected to the switch in Building B and despite IGMP snooping being enabled on both Layer 2 switches and IGMPv2 runs on the hosts. Which design change will prevent the multicast traffic from being unnecessarily flooded throughout the campus network?

- A. Enable PIM snooping on both Layer 2 switches.
- B. Enable multicast storm control on the link between Switch 1 and Switch 2.
- C. Use static Layer 2 MAC forwarding entries on Switch 1.
- D. Change the IPv4 multicast group address such that it excludes the usage of link-local MAC addresses.
- E. Ensure that Switch 1 is an IGMP querier.

Answer: D

NEW QUESTION 63

Which two options are considered risks or concerns when both the Internet and VPN service functions are on the same PE router? (Choose two.)

- A. Internet-based attacks can affect VPN customers.
- B. BGP cannot simultaneously run on the PE router that runs MPLS.
- C. MP-BGP prefixes increase routers' global routing tables, which affects network convergence.
- D. Failure on the PE router affects both VPN and Internet services.
- E. Customer performance can be affected by VPN traffic if Internet-based traffic is not prioritized on the PE

Answer: AD

NEW QUESTION 68

Which option is a critical mechanism to optimize convergence speed when using MPLS FRR?

- A. IGP timers
- B. Bandwidth reservation
- C. Shared risk link groups
- D. Down detection

Answer: D

NEW QUESTION 72

Which option describes a design benefit of root guard?

- A. It prevents switch loops caused by unidirectional point-to-point link condition on Rapid PVST+ and MST.
- B. It prevents switch loops by detecting on one-way communications on the physical port.
- C. It allows small, unmanaged switches to be plugged into ports of access switches without the risk of switch loops.
- D. It makes the port go immediately into the forwarding state after being connected.
- E. It prevents switched traffic from traversing suboptimal paths on the network.
- F. It does not generate a spanning-tree topology change upon connecting and disconnecting a station on a port.

Answer: E

NEW QUESTION 77

You are designing a solution to connect a primary data center to a disaster recovery site, The hosted applications will be web and email servers that are provided through a virtualized environment. Which connectivity technology should you consider for this design?

- A. L2TPV3.
- B. VPWS.
- C. Point-To-Point GRE tunnels.
- D. VPLS.

Answer: A

NEW QUESTION 80

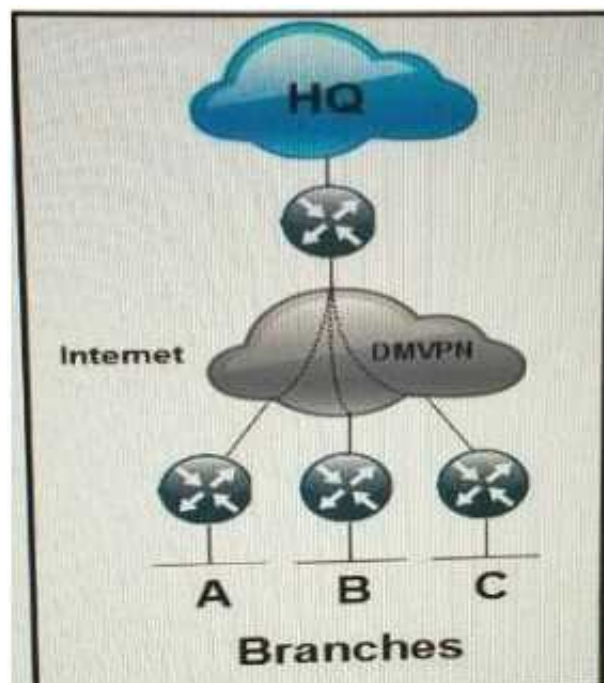
A service provider is designing a new backbone based on an IGP and MPLS what are two valid reasons for implementing MPLS-TE as well? (Choose two)

- A. MPLS-TE is required to reroute traffic within less than 1 second in case of a link failure inside the backbone
- B. MPLS-TE can detect and react to neighbor failures faster than IGPs can
- C. MPLS-TE is required to route different MPLS QoS Service classes through different paths
- D. MPLS-TE is required to create backup paths independently from the IGP
- E. MPLS-TE is a prerequisite for implementing RSVP in the backbone

Answer: CD

NEW QUESTION 85

Refer to the exhibit.



Which routing solution is the most scalable to connect the branches to the HQ and to connect the branches together over the internet using DMVPN?

- A. EIGRP
- B. EIGRP with the branch routers setup as stubs
- C. OSPF with each branch router as an ABR
- D. IS-IS L2 in all locations
- E. OSPF Area 0 in all locations

Answer: B

NEW QUESTION 90

A network is designed to use OSPF to reach eBGP peers. For eBGP peers to stay stable in case of a link failure, what condition should be avoided?

- A. Advertise IP addresses used on eBGP statements via a normal OSPF area
- B. Use an ACL to block BGP in one direction
- C. Disable BGP synchronization
- D. Advertise IP addresses used on eBGP peer statements via eBGP

Answer: D

NEW QUESTION 95

Which two options are Loop-Free Alternate design considerations? (Choose two)

- A. MPLS TE must be enabled because it is used for building the backup paths
- B. Backup coverage and effectiveness is dependent on the network topology
- C. It can simplify the capacity planning by matching the backup path with the post-convergence path
- D. It provides an optional backup path by avoiding low bandwidth and edge links
- E. It can impact SLA-sensitive appliance by routing traffic to low bandwidth links while IGP convergence is in progress

Answer: BE

NEW QUESTION 100

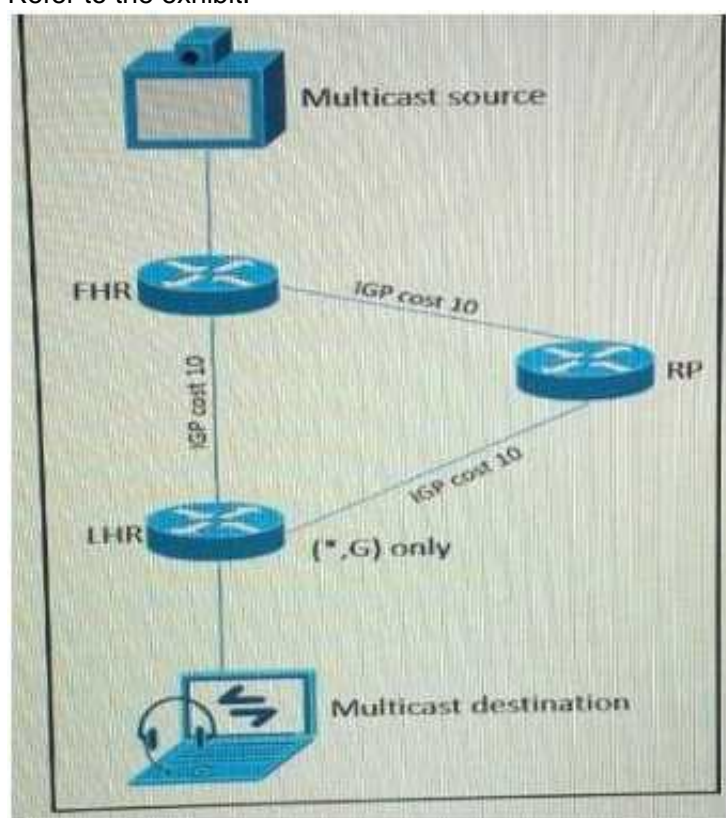
Which three processes are part of the ITILv3 Service Operation? (Choose three)

- A. Release and deployment management
- B. Problem management
- C. Incident management
- D. Event management
- E. Service-level management
- F. Change management

Answer: BCD

NEW QUESTION 102

Refer to the exhibit.



As part of a redesign project, you must predict multicast behavior. What is the resultant multicast traffic receiving on the shared tree (, G), if it is received on the LHR interface indicated?

- A. It is dropped due to an unsuccessful RPF check against the multicast receiver
- B. It is switched due to a successful RPF check against the routing table
- C. It is switched given that no RPF check is performed
- D. It is dropped due to an unsuccessful RPF check against the multicast source

Answer: B

NEW QUESTION 103

DRAG DROP

Drag and drop the NETCONF layers on the left onto their appropriate description on the right.

transport	defines a set of base protocol operations
messages	provides a communication path between the client and server
operations	provides a framing mechanism for encoding RPCs
content	holds information on data models and protocol operations

- A. Mastered
- B. Not Mastered

Answer: A

Explanation:



NEW QUESTION 105

Which two options are potential problems with route aggregation? (Choose two)

- A. Maintaining host IP addresses during migrations

- B. Route flapping
- C. Suboptimal routing
- D. Topology hiding
- E. Asymmetric routing
- F. Prefix hijacking

Answer: CE

NEW QUESTION 109

In an OSPF network with 20 routers connected together with Ethernet cabling , which topology typically takes the longest to converge?

- A. Full mesh
- B. Ring
- C. Squared
- D. Triangulated
- E. Partial mesh

Answer: B

NEW QUESTION 114

A DMVPN network is being deployed for 10 branch sites to connect to the central headquarters over the Internet. Each branch site connects to the internet via a 1.5 Mb/s ADSL line, and the headquarters connects to the Internet over a 100Mb/s circuit limited to 20 Mb/s by the service provider. Which QoS mechanism if any, do you recommend at the headquarters location?

- A. Rate-limiting the 100 Mb/s circuit to 20 Mb/s
- B. Applying hierarchical QoS with parent policy for the overall circuit and child policy for the spokes
- C. Traffic shaping the 100 Mb/s circuit to 20 Mb/s
- D. QoS is not required in this instance due to maximum traffic being received by the branches being 15 Mb/s

Answer: B

NEW QUESTION 116

Which two OSPF network type combinations can you use in the design that requires spoke-to-spoke direct traffic? (Choose two.)

- A. hub as point-to-multipoint and spokes as non-broadcast
- B. hub as point-to-multipoint and spokes as point-to-point
- C. hub as broadcast and spokes as non-broadcast
- D. hub as point-to-point and spokes as point-to-point

Answer: BC

NEW QUESTION 121

A customer requests that you determine how much of their remote branch traffic into a central data center is related to a call manager that resides in the data center. Which solution do you recommend?

- A. Enable NetFlow on branch routers
- B. Enable netFlow on central data center routers
- C. Perform SNMP polling of central data center routers
- D. Perform SNMP polling of branch routers
- E. Create an ACL on the local call manager switch with logging enabled
- F. Span traffic from the switch port on the call manager to a data analyzer

Answer: B

NEW QUESTION 126

As network designer, which option is your main concern with regards to virtualizing multiple network zones into a single hardware device?

- A. Fate sharing
- B. CPU resource allocation
- C. Congestion control
- D. Security
- E. Bandwidth allocation

Answer: A

NEW QUESTION 127

Which two options are two advantages of summarizing networks at the aggregation layer rather than at the core? (Choose two.)

- A. It prevents the core from having unnecessary routes.
- B. It no longer needs a core layer.
- C. It prevents black hole routing.
- D. It avoids network-wide impact upon VLAN changes local to the aggregation devices.
- E. it allows for optimal routing

Answer: AD

NEW QUESTION 131

You are reviewing a new data center design for a customer. They chose to leverage a tunnel-based overlay technology for quick deployment and multitenant security. Which design concern can affect the availability across the data center?

- A. Nonoverlapping IP address space between the overlay networks
- B. MTU size on the underlay links
- C. Review of common paths on the underlay links
- D. Proper placement of STP root bridge in overlay networks

Answer: B

NEW QUESTION 133

What is a design aspect regarding multicast transport for MPLS Layer 3 VPNs using the Rosen Draft implementation?

- A. LDP is the multicast control plane protocol.
- B. Multicast traffic is forwarded over GRE tunnels.
- C. Multicast traffic is forwarded over LDP or RSVP signaled LSPs.
- D. Using the MDT SAFI in BGP ensures that PIM can be disabled in the core.

Answer: B

NEW QUESTION 135

Your client is considering acquiring a new IPv6 address block so that all Ethernet interfaces on the network receive addresses based on their burned-in hardware addresses, with support for 600 VLANs. Which action do you recommend?

- A. Acquire a new /60 IPv6 network and subnet it into /70 networks, one per VLAN
- B. Acquire a new /58 IPv6 network and subnet it into /64 networks, one per VLAN
- C. Acquire a new /60 IPv6 network and subnet it into /68 networks, one per VLAN
- D. Acquire a new /54 IPv6 network and subnet it into /64 networks, one per VLAN

Answer: D

NEW QUESTION 140

An enterprise network has two core routers that connect to 200 distribution routers and uses full-mesh iBGP peering between these routers as its routing method. The distribution routers are experiencing high CPU utilization due to the BGP process. Which design solution is the most effective?

- A. Increase the memory on the distribution routers
- B. Increase the memory on the core routers
- C. Implement route reflectors on the two core routers
- D. Increase bandwidth between the core routers
- E. Implement eBGP between the core and distribution routers

Answer: C

NEW QUESTION 142

A healthcare customer requested that health statistics from their infrastructure devices are to be sent over their service provider MPLS network. Which protocol must be enabled?

- A. SNMPv3
- B. Syslog TLS
- C. syslog
- D. SNMPv2
- E. SSH

Answer: A

NEW QUESTION 147

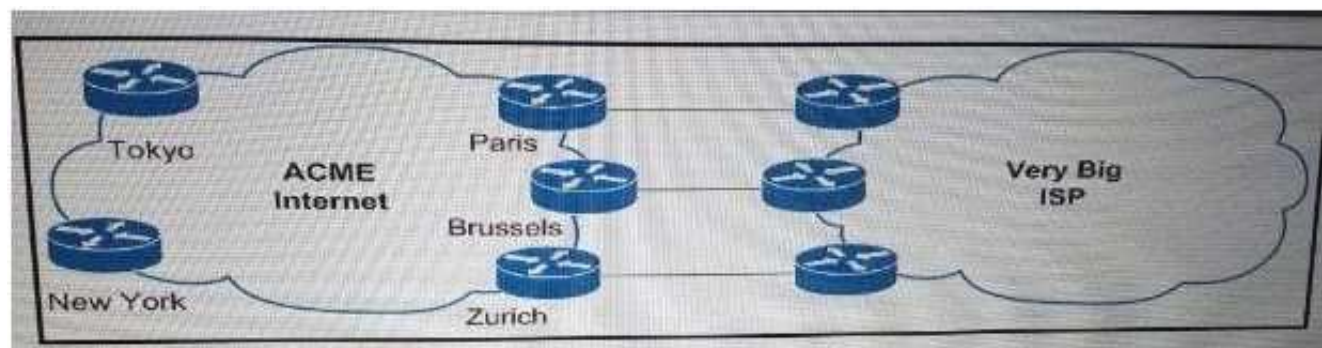
Which two statements about AToM are true? (Choose two)

- A. It encapsulates Layer 2 frames at the egress PE
- B. When using AToM, the IP precedence field is not copied to the MPLS packet
- C. AToM supports connecting different L2 technologies using interworking option
- D. The loopback address of the PE router must be either /24 or /32
- E. It provides support for L2VPN features on ATM interfaces

Answer: CE

NEW QUESTION 148

Refer to the exhibit.



Service provider ACME Internet just added a 100 GB/s peering in Paris that it wants to use by default for outbound traffic to Big ISP. Which routing policy achieves the desired outcomes?

- A. Use traffic engineering by injecting a preferred LOCAL_PREF attribute to routes advertised from Very Big ISP in Paris
- B. Apply an import policy in New York that adds a Weight attribute to routes learned from Very Big ISP via Paris
- C. Apply an export policy in Paris by applying a MED or community attribute with a preference that very Big ISP act upon
- D. Apply an import policy that filters longer prefixes than /24 in Brussels and Zurich

Answer: A

NEW QUESTION 150

You are redesigning a single-level IS-IS network with 500 routers, which have short-haul and long-haul links. Most of the time the routing domain is stable, but periodically interfaces on long-haul links bounce for a short period of time, causing 10 to 20 flaps in a few minutes. The probable cause is local road construction. Although fast convergence is important, the client has concerns about taxing CPU cycles on the older routing platforms. What change should you recommend that both protects the CPU of the older routers during the short periods of excessive flapping, yet does not have an impact on fast convergence for all interface failures?

- A. Modify hello timers on routers with short-haul links
- B. Implement LSP generation throttling on routers with long-haul links
- C. Modify the length of time that an LSP remains in the router database without being refreshed on all routers
- D. Implement a delay between successive IS-IS LSP packet transmissions on routers with long-haul links

Answer: D

NEW QUESTION 154

A retail company connects its 250 branches across the globe to the core using MPLS Layer 3 VPN. The company is planning to migrate its traditional telephony services to VoIP, in order to reduce the cost of international calls. What are the two primary concerns when implementing this migration? (Choose two)

- A. Jitter
- B. Call routing design
- C. SRST
- D. MTU
- E. Available bandwidth

Answer: AE

NEW QUESTION 155

Which open source message broker is in the Cisco Cloud Center?

- A. Apache Kafka
- B. HornetQ
- C. RabbitMQ
- D. Fuse Message Broker
- E. Oracle Message Broker

Answer: C

NEW QUESTION 160

You are redesigning a high-speed transit network due to congestion-related issues. Which congestion avoidance mechanism can you apply to the existing network?

- A. NBAR
- B. FIFO
- C. WRED
- D. Rate-limit
- E. Policy-Based Routing

Answer: C

NEW QUESTION 162

Which two control plane policer design options should you consider to achieve high availability? (Choose two)

- A. Control plane policers require that adequate protocols overhead are factored in to allow protocol convergence
- B. Control plane policers are really needed only on externally facing devices
- C. Control plane policers can cause the network management systems to create false alarms
- D. Control plane policers are enforced in hardware to protect the software path, but they are hardware platform-dependent in terms of classification ability

E. Control plane policers must be processes before a forwarding decision is made

Answer: DE

NEW QUESTION 166

Which DCI technology utilizes a “flood and learn” technique to populate the Layer 2 forwarding table?

- A. OTV
- B. E-VPN
- C. VPLS
- D. LISP

Answer: A

NEW QUESTION 170

After a large EIGRP network had automatic summarization enabled throughout, it started experiencing routing loops. Which action should you take to quickly resolve the routing loops yet to perform summarization?

- A. Redistribute connected routes at major IP networks boundaries
- B. Redesign the IP addressing scheme
- C. Increase the AD of the automatically summarized routes
- D. Replace the automatic summarization with more specific summary routes

Answer: D

NEW QUESTION 172

What is an advantage of placing the IS-IS flooding domain boundary at the core Layer in a three-layer hierarchical network?

- A. The L1 and L2 domains can easily overlap
- B. The L2 domain is contained and more stable
- C. It can be applied to any kind of topology
- D. It reduces the complexity of the L1 domains

Answer: A

NEW QUESTION 173

Which two statements about VXLAN are true? (Choose two)

- A. VXLAN is a Cisco proprietary solution
- B. VXLAN is an encapsulation method used to create a Layer 3 overlay network
- C. VXLAN can be used to enforce Layer 2 isolation in a multitenant infrastructure
- D. VXLAN uses the Spanning Tree protocol for loop prevention
- E. VXLAN overcomes the 802.1Q virtual LAN address space limitation

Answer: BE

NEW QUESTION 176

What is a design benefit of PortFast?

- A. PortFast allows small, unmanaged switches to be plugged into ports of access switches without risking switch loops
- B. PortFast disables spanning-tree on the port, which puts the port into the forwarding state immediately after it is connected
- C. Portfast does not generate a spanning-tree topology change when a station on a port is connected or disconnected
- D. PortFast detects one-way communications on the physical port, when prevents switch loops
- E. PortFast prevents switched traffic from traversing suboptimal paths on the network
- F. PortFast prevents switch loops that are caused by a unidirectional point-to-point link condition on Rapid PVST+ and MST

Answer: B

NEW QUESTION 181

Which two SAN designs appropriate to support large-scale SAN environments? (Choose two)

- A. Edge-core-edge design
- B. Fibre Channel forwarder
- C. Split fabric design
- D. Core-edge design
- E. Dual fabric design

Answer: AD

NEW QUESTION 183

As part of network design, two geographically separated data centers must be interconnected using Ethernet-over-MPLS pseudowire. The link between the sites is stable, the topology has no apparent loops, and the root bridges for the respective VLANs are stable and unchanging. Which aspect must be the part of the design to mitigate the risk of connectivity

issues between the data centers?

- A. Enable Spanning Tree on one data center, and Rapid Reconfiguration of Spanning tree on the other
- B. Ensure that the spanning tree diameter for one or more VLANs is not too large.
- C. Enable UDLD on the link between the data centers.
- D. Enable root guard on the link between the data centers.

Answer: B

NEW QUESTION 184

An enterprise campus is adopting a network virtualization design solution with these requirements

It must include the ability to virtualize the data plane and control plane by using VLANs and VRFs It must maintain end-to-end logical path transport separation across the network

resources available grouped at the access edge

Which two primary models can this network virtualization design be categorized? (Choose two)

- A. Path isolation
- B. Session isolation
- C. Group virtualization
- D. Services virtualization
- E. Edge isolation

Answer: AD

NEW QUESTION 189

A large ISP is analysing which IGP meets these following requirements Network must be resilient against unstable MTU in one side of newly released transmission pieces of equipment Network must support MPLS traffic engineering solution for future use Which IGP must be selected and why?

- A. ISIS : in case MTU changes your TE tunnels keep the LSP stable
- B. OSPF: adjacency remains up even if MTU changes
- C. OSPF: in case MTU changes your TE tunnels keep the LSP stable
- D. ISIS: adjacency remains up even if MTU changes

Answer: D

NEW QUESTION 191

Which solution prevents microloops from be formed during network convergence time?

- A. RSVP-TE
- B. LFA
- C. Prefix suppression
- D. RLFA

Answer: D

NEW QUESTION 192

In a network with dynamic mutual redistribution between multiple OSPFv2 and EIGRP boundaries, which two mechanisms avoid suboptimal routing? (Choose two)

- A. Route filtering
- B. AD manipulation
- C. Matching EIGRP process ID
- D. Matching OSPF external routes
- E. Route tagging

Answer: AE

NEW QUESTION 196

What is an effect of using ingress filtering to prevent spoofed addresses on a network design?

- A. It reduces the effect of DDoS attacks when associated with DSCP remarking to Scavenger
- B. It protects the network infrastructure against spoofed DDoS attacks
- C. It filters RFC 1918 addresses
- D. It classifies bogon traffic and remarks it with DSCP bulk

Answer: B

NEW QUESTION 197

DRAG DROP

Drag the IT standards on the left to their network design application on the right. Not all applications will be used.

FCAPS	Change management
ITIL®	Governance framework
CMIP	OSI-specified network management protocol
TMN	Telecommunications systems management framework
	Network management framework
	Enterprise architecture framework

- A. Mastered
B. Not Mastered

Answer: A

Explanation:

ITIL®
Governance framework
CMIP
TMN
FCAPS
Enterprise architecture framework

NEW QUESTION 199

DRAG DROP

Drag the fast convergence mechanisms on the left and drop them into the objectives that they accomplish.

Link-State Partial SPF	Fast Detection
IP Event Dampening	Target
BFD	Slow Network Reaction When Events Occur Rapidly
Link-State Incremental SPF	Target
Link-State Exponential Backoff	Target
	Fast Route Calculation
	Target
	Target

- A. Mastered
B. Not Mastered

Answer: A

Explanation:



NEW QUESTION 202

DRAG DROP

Drag the design requirements on the left to the appropriate tool and protocols on the right. Not all tools and protocols will be used.

chargeback billing	NetFlow
event collection and correlation	IP SLA
IP applications quality assurance	SNMP
average link utilization monitoring	Syslog
VoIP call quality monitoring	

- A. Mastered
- B. Not Mastered

Answer: A

Explanation:

The diagram shows four design requirements:

- chargeback billing
- IP applications quality assurance
- average link utilization monitoring
- event collection and correlation

NEW QUESTION 207

DRAG DROP

As a network designer for a major multiservice network, your first assignment is to improve the IS-IS convergence to meet application requirements. Drag and drop the convergence tools or techniques to be used on your proposal from the left into the corresponding convergence phase on the right.

SPF throttling

LSA throttling

LSP throttling

IS-IS hello interval

limit LSP flooding

prefix prioritization

event detection

event propagation

event processing

RIB updating

- A. Mastered
- B. Not Mastered

Answer: A

Explanation:

IS-IS hello interval

LSP throttling

SPF throttling

prefix prioritization

NEW QUESTION 210
.....

THANKS FOR TRYING THE DEMO OF OUR PRODUCT

Visit Our Site to Purchase the Full Set of Actual 352-001 Exam Questions With Answers.

We Also Provide Practice Exam Software That Simulates Real Exam Environment And Has Many Self-Assessment Features. Order the 352-001 Product From:

<https://www.2passeasy.com/dumps/352-001/>

Money Back Guarantee

352-001 Practice Exam Features:

- * 352-001 Questions and Answers Updated Frequently
- * 352-001 Practice Questions Verified by Expert Senior Certified Staff
- * 352-001 Most Realistic Questions that Guarantee you a Pass on Your FirstTry
- * 352-001 Practice Test Questions in Multiple Choice Formats and Updatesfor 1 Year