

Exam Questions 70-487

Developing Windows Azure and Web Services

<https://www.2passeasy.com/dumps/70-487/>



NEW QUESTION 1

DRAG DROP

You need to configure the Windows Azure service definition to enable Consolidated Messenger to upload files.

What should you do? (To answer, drag the appropriate configuration items to the correct location or locations. Each configuration item may be used once, more than once, or not at all. You may need to drag the split bar between panes or scroll to view content.)

http

tcp

https

InternalEndpoint

InputEndpoint

80

22

3389

Answer Area

```

<Binding name="Website" endpointName="Website" />
<Binding name="Transfer" endpointName="Transfer" />
</Bindings>
</Site>
</Sites>
<Endpoints>

  <[ ] name="Website"

    protocol=" [ ] "

    port=" [ ] " />

  <[ ] name="Transfer"

    protocol=" [ ] "

    port=" [ ] " />

</Endpoints>
</WebRole>

```

Answer:

Explanation:

```

<Binding name="Website" endpointName="Website" />
<Binding name="Transfer" endpointName="Transfer" />
</Bindings>
</Site>
</Sites>
<Endpoints>

  < InputEndpoint name="Website"

    protocol=" http "

    port=" 80 " />

  < InputEndpoint name="Transfer"

    protocol=" tcp "

    port=" 22 " />

</Endpoints>
</WebRole>

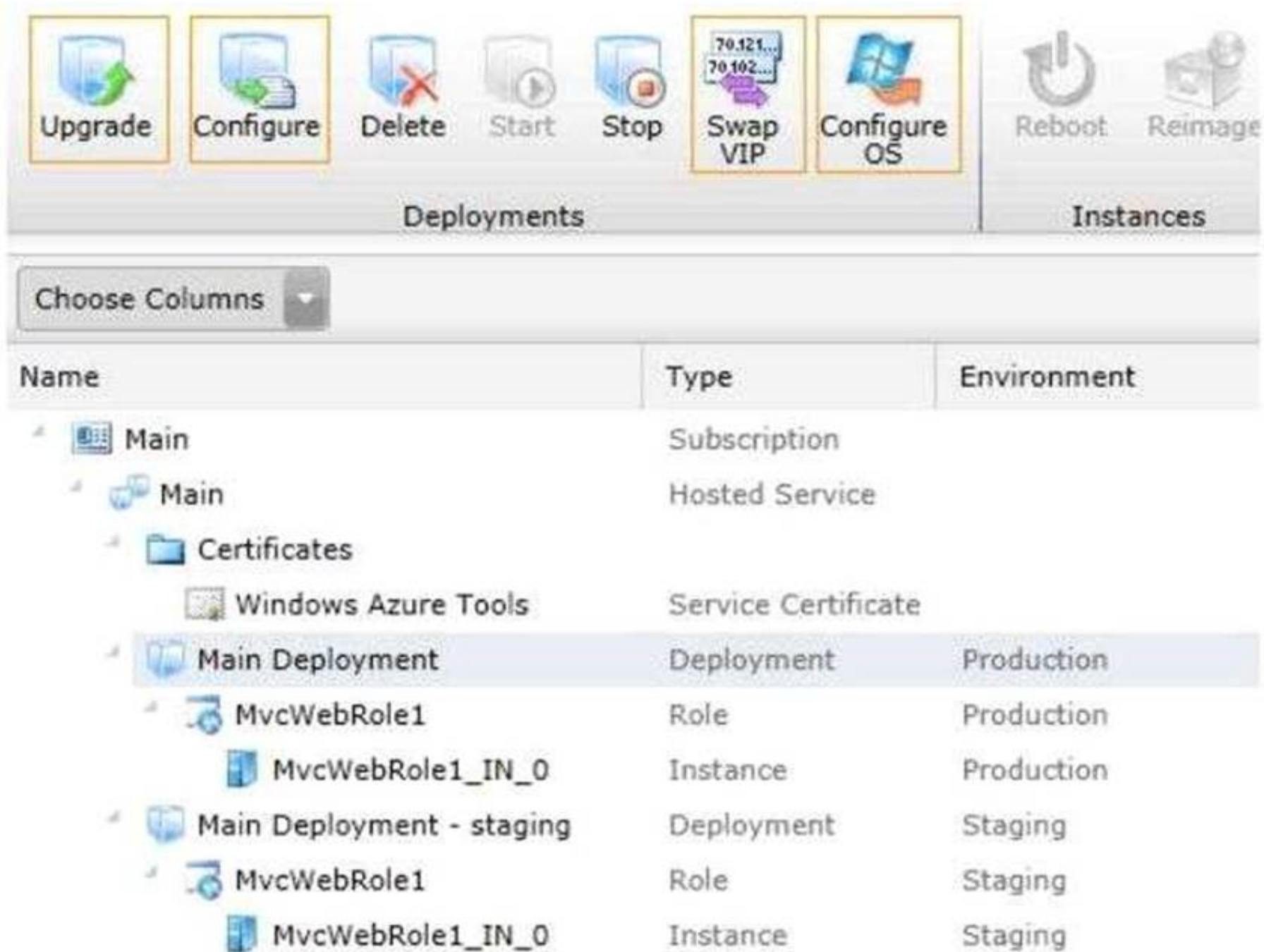
```

NEW QUESTION 2

HOTSPOT

You need to deploy the application to the Windows Azure production environment to meet the business requirements.

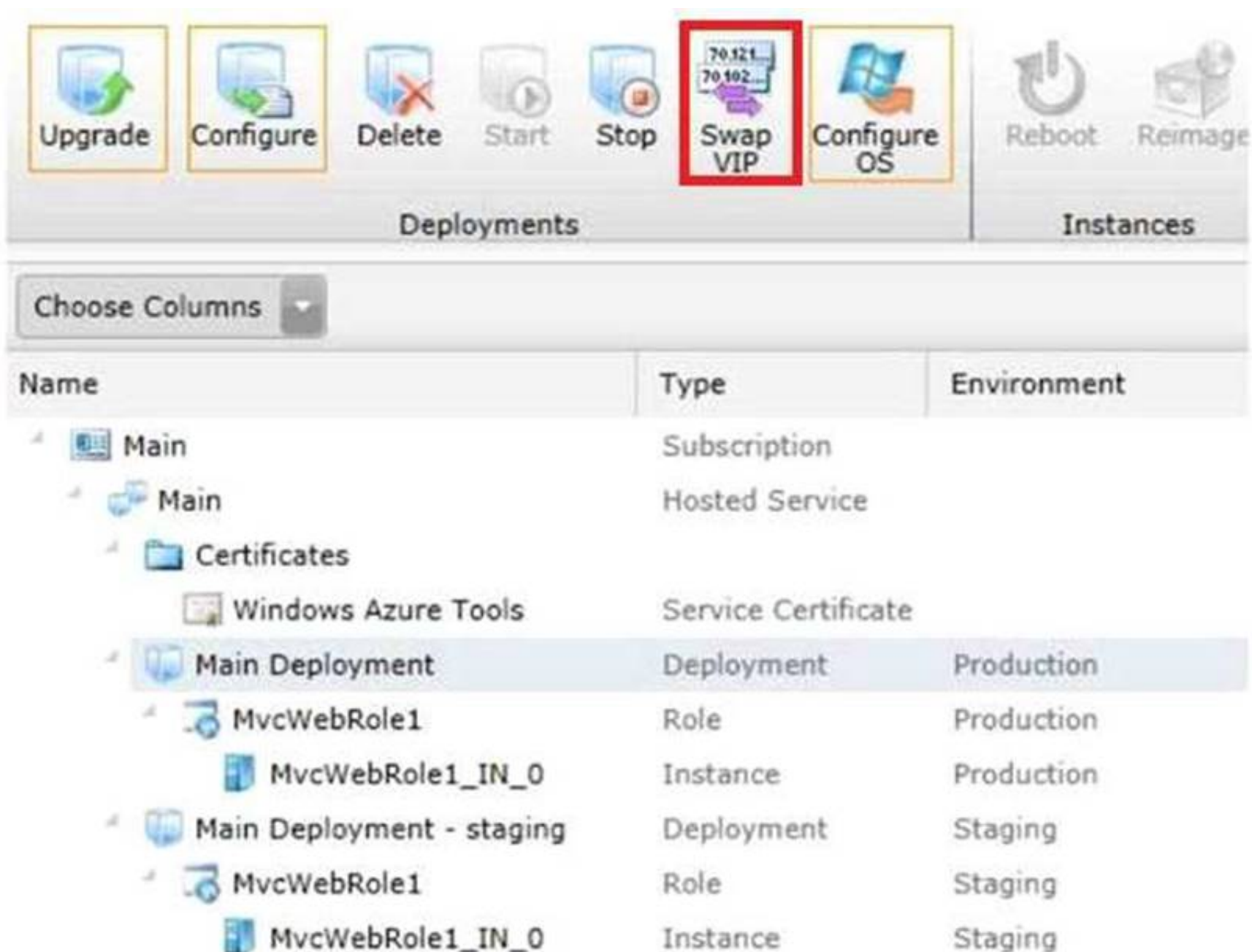
What should you do? (To answer, select the appropriate button in the answer area.)



Name	Type	Environment
Main	Subscription	
Main	Hosted Service	
Certificates		
Windows Azure Tools	Service Certificate	
Main Deployment	Deployment	Production
MvcWebRole1	Role	Production
MvcWebRole1_IN_0	Instance	Production
Main Deployment - staging	Deployment	Staging
MvcWebRole1	Role	Staging
MvcWebRole1_IN_0	Instance	Staging

Answer:

Explanation:



Name	Type	Environment
Main	Subscription	
Main	Hosted Service	
Certificates		
Windows Azure Tools	Service Certificate	
Main Deployment	Deployment	Production
MvcWebRole1	Role	Production
MvcWebRole1_IN_0	Instance	Production
Main Deployment - staging	Deployment	Staging
MvcWebRole1	Role	Staging
MvcWebRole1_IN_0	Instance	Staging

NEW QUESTION 3

DRAG DROP

Flight information data provided by Margie's Travel is updated both locally and remotely. When the data is synced, all changes need to be merged together without causing any data loss or corruption.

You need to implement the Sync() method in the MargiesTravelSync.es file.

What should you do? (To answer, drag the appropriate code segments to the correct location or locations in the answer area. Each code segment may be used once, more than once, or not at all. You may need to drag the split bar between panes or scroll to view content.)

`XmlReadMode.DiffGram`

`XmlReadMode.Fragment`

`XmlReadMode.InferSchema`

`XmlWriteMode.DiffGram`

`XmlWriteMode.IgnoreSchema`

Answer Area

```

public void Sync()
{
    var sendStream = SendStream();
    var receiveStream = ReceiveStream();
    var local = LoadLocal();

    local.WriteXml(sendStream,  );

    local.ReadXml(receiveStream,  );
}
                    
```

Answer:

Explanation:

<http://msdn.microsoft.com/en-us/library/ms135424.aspx>

NEW QUESTION 4

DRAG DROP

Historical flight information data will be stored in Windows Azure Table Storage using the FlightInfo class as the table entity.

There are millions of entries in the table. Queries for historical flight information specify a set of airlines to search and whether the query should return only late flights. Results should be ordered by flight name.

You need to specify which properties of the FlightInfo class should be used at the partition and row keys to ensure that query results are returned as quickly as possible.

What should you do? (To answer, drag the appropriate properties to the correct location or locations in the answer area. Each property may be used once, more than once, or not at all. You may need to drag the split bar between panes or scroll to view content.)

Airline

WasLate

Flight

Arrival

Answer Area

Use the property as the partition key.

Use the property as the row key.

Answer:

Explanation:

Airline

WasLate

Flight

Arrival

Answer Area

Use the Airline property as the partition key.

Use the Flight property as the row key.

NEW QUESTION 5

Errors occasionally occur when saving data using the FlightInfoContext ADO.NET Entity Framework context. Updates to the data are being lost when an error occurs.

You need to ensure that data is still saved when an error occurs by retrying the operation. No more than five retries should be performed.

Which code segment should you use as the body of the SaveChanges() method in the FlightInfoContext.es file?

- ☐ A.

```
for (var i = 0; i < 5; i++)
{
    try
    {
        return base.SaveChanges();
    }
    catch (SqlException ex)
    {
        if (IsTransient(ex.Number))
        {
            continue;
        }
    }
}
return base.SaveChanges();
```
- ☐ B.

```
var exception = new EntitySqlException();
while (exception.Data != 0 && exception.Data.Count < 5)
{
    try
    {
        return base.SaveChanges();
    }
    catch (EntitySqlException ex)
    {
        if (IsTransient(ex.HResult))
        {
            exception = ex;
        }
    }
}
return base.SaveChanges();
```
- ☐ C.

```
for (var i = 0; i < 5; i++)
{
    try
    {
        return base.SaveChanges();
    }
    catch (SqlException ex)
    {
        if (IsTransient(ex.Number))
        {
            break;
        }
    }
}
return base.SaveChanges();
```
- ☐ D.

```
for (var i = 0; i < 5; i++)
{
    try
    {
        return base.SaveChanges();
    }
    catch (SqlException ex)
    {
        if (!IsTransient(ex.Number))
        {
            continue;
        }
    }
}
return base.SaveChanges();
```

- A. Option A
 B. Option B
 C. Option C
 D. Option D

Answer: A

NEW QUESTION 6

You are adding a new REST service endpoint to the FlightDataController controller. It returns flights from the consolidated data sources only for flights that are late.

You need to write a LINQ to Entities query to extract the required data.

Which code segment should you use?

- ☐ A.

```
var historical = LoadHistorical();
var query = _Context.FlightInfo.AsQueryable()
    .Join(historical, x => x.Flight, y => y.Flight, (x, y) => new { Current = x,
    Historical = y })
    .Where(x => x.Historical.WasLate)
    .Select(x => x.Current);
```
- ☐ B.

```
var historical = LoadHistorical();
var query = _Context.FlightInfo.AsEnumerable()
    .Where(x => historical.All(y => y.WasLate && x.Flight == y.Flight))
    .Select(x => x);
```
- ☐ C.

```
var historical = LoadHistorical();
var query = _Context.FlightInfo.AsQueryable()
    .Where(x => historical.Select(y => y.Flight).Contains(x.Flight))
    .Where(x => historical.Any(y => y.WasLate))
    .Select(x => x);
```
- ☐ D.

```
var historical = LoadHistorical();
var query = _Context.FlightInfo.AsEnumerable()
    .Join(historical, x => x.Flight, y => y.Flight, (x, y) => new { Current = x,
    Historical = y })
    .Where(x => x.Historical.WasLate)
    .Select(x => x.Current);
```

- A. Option A
 B. Option B
 C. Option C
 D. Option D

Answer: D

Explanation: Explanation/Reference:

D is right because you send result as REST so if you use "AsQueryable" the result is deferred to the next enumeration of your result.

D is not optimized but will work. A will break at runtime.

Credits to Rem

NEW QUESTION 7

You are adding a new REST service endpoint to the FlightDataController controller that returns the total number of seats for each airline.

You need to write a LINQ to Entities query to extract the required data.

Which code segment should you use?

- ☐ A.

```
var query = from flight in _Context.FlightInfo
group flight by flight.Seats into agg
let airline = agg.First()
select new
{
    TotalSeats = agg.Key,
    Airline = airline,
};
```
- ☐ B.

```
var query = from flight1 in _Context.FlightInfo
from flight2 in _Context.FlightInfo
where flight1.Airline == flight2.Airline
select new
{
    Airline = flight1.Airline,
    TotalSeats = Math.BigMul(flight1.Seats, flight2.Seats),
};
```
- ☐ C.

```
var query = from flight in _Context.FlightInfo
from airline in flight.Airline
group airline by airline into agg
select new
{
    Airline = agg.Key,
    TotalSeats = agg.Sum(x => Convert.ToInt32(x)),
};
```
- ☐ D.

```
var query = from flight in _Context.FlightInfo
group flight by flight.Airline into agg
select new
{
    Airline = agg.Key,
    TotalSeats = agg.Sum(x => x.Seats),
};
```

- A. Option A
 B. Option B
 C. Option C
 D. Option D

Answer: D

NEW QUESTION 8

You need to load flight information provided by Consolidated Messenger. What should you use?

- A. Office Open XML
 B. COM interop
 C. OleDbConnection and OleDbDataReader
 D. EntityConnection and EntityDataReader

Answer: C

NEW QUESTION 9

The GetExternalOrder() method in the ExternalQueueService service is throwing a runtime error. The method must query the database for a record that matches the orderNum parameter passed to the method.

You need to modify the queryString string to retrieve the record. With which code segment should you replace line EQ64?

- ☐ A. `string queryString = @"SELECT VALUE q FROM ExternalOrdersEntities.InboundQueues AS q WHERE q.OrderNum = @orderNum";`
- ☐ B. `string queryString = @"SELECT VALUE * FROM ExternalOrdersEntities.InboundQueues WHERE OrderNum = @orderNum";`
- ☐ C. `string queryString = @"SELECT q.OrderNum, q.VendorId, q.FilePath, q.OrderValue FROM ExternalOrdersEntities AS q WHERE q.OrderNum = @orderNum";`
- ☐ D. `string queryString = @"SELECT q FROM ExternalOrdersEntities.InboundQueues WHERE q.OrderNum = @orderNum";`

- A. Option A
 B. Option B
 C. Option C
 D. Option D

Answer: C

NEW QUESTION 10

DRAG DROP

You add a class named ShippingInfo.

You need to modify the IShippingService interface and the ShippingInfo class to meet the technical requirements.

What should you do? (To answer, drag the appropriate code segments to the correct location or locations in the answer area. Each code segment may be used once, more than once, or not at all. You may need to drag the split bar between panes or scroll to view content.)

	Answer Area
[DataMember]	
[CollectionDataContract]	<code>public interface IShippingService</code>
[DataContract]	<code>{</code>
[ServiceContract]	<code>ShippingInfo GetShippingInfo(int orderNum);</code>
[OperationContract]	<code>}</code>
	<code>public class State</code>
	<code>{</code>
	<code>public string StateName { get; set; }</code>
	<code>}</code>
	<code>public class ShippingInfo : State</code>
	<code>{</code>
	<code>public string StreetAddress { get; set; }</code>
	<code>public string ZipCode { get; set; }</code>
	<code>}</code>

Answer:

Explanation:

<http://msdn.microsoft.com/en-us/library/system.servicemodel.servicecontractattribute.aspx>

NEW QUESTION 10

DRAG DROP

You need to create the ShippingContext class in the ShippingAddress.es file to meet the requirements.

What should you do? (To answer, drag the appropriate code segments to the correct location or locations in the answer area. Each code segment may be used once, more than once, or not at all. You may need to drag the split bar between panes or scroll to view content.)

ObjectSet
ObjectContext
ObjectResult
LazyLoadingEnabled = true;
LazyLoadingEnabled = false;

Answer Area

```

public class ShippingContext : 
{
    public ShippingContext()
        : base("name=ShippingAddressEntities")
    {
        this.ContextOptions.
    }
    public <ShippingAddress> ShippingAddresses
    {
        get { return CreateObjectSet<ShippingAddress>(); }
    }
    public <State> States
    {
        get { return CreateObjectSet<State>(); }
    }
}

```

Answer:

Explanation:

```

public class ShippingContext : ObjectContext
{
    public ShippingContext()
        : base("name=ShippingAddressEntities")
    {
        this.ContextOptions. LazyLoadingEnabled = true;
    }
    public ObjectSet <ShippingAddress> ShippingAddresses
    {
        get { return CreateObjectSet<ShippingAddress>(); }
    }
    public ObjectSet <State> States
    {
        get { return CreateObjectSet<State>(); }
    }
}

```

NEW QUESTION 12

You need to modify the ExecuteCommandProcedure() method to meet the technical requirements.
 Which code segment should you use?

- ☐ A.

```
private async Task ExecuteCommandProcedure(EntityCommand command)
{
    using (EntityConnection connection = new EntityConnection
("name=ExternalOrdersEntities"))
    {
        command.Connection = connection;
        await connection.OpenAsync();
        await command.ExecuteNonQueryAsync();
    }
}
```
- ☐ B.

```
private void ExecuteCommandProcedure(EntityCommand command)
{
    using (EntityConnection connection = new EntityConnection
("name=ExternalOrdersEntities"))
    {
        command.Connection = connection;
        command.ExecuteNonQueryAsync();
    }
}
```
- ☐ C.

```
private void ExecuteCommandProcedure(EntityCommand command)
{
    using (EntityConnection connection = new EntityConnection
("name=ExternalOrdersEntities"))
    {
        command.Connection = connection;
        connection.OpenAsync();
        command.ExecuteNonQueryAsync();
    }
}
```
- ☐ D.

```
private async Task ExecuteCommandProcedure(EntityCommand command)
{
    using (EntityConnection connection = new EntityConnection
("name=ExternalOrdersEntities"))
    {
        command.Connection = connection;
        connection.OpenAsync();
        command.ExecuteNonQueryAsync();
    }
}
```

- A. Option A
B. Option B
C. Option C
D. Option D

Answer: A

NEW QUESTION 14

DRAG DROP

The GetExternalOrders() method must use members of the EntityClient namespace to query the database for all records in the InboundQueue entity.

You need to modify the GetExternalOrders() method to return the correct data.

What should you do? (To answer, drag the appropriate code segments to the correct location or locations in the answer area. Each code segment may be used once, more than once, or not at all. You may need to drag the split bar between panes or scroll to view content.)

ExecuteReader

ExecuteScalar

SequentialAccess

KeyInfo

ExternalOrders

ExternalOrdersEntities

Answer Area

```

public List<Entities.InboundQueue> GetExternalOrders()
{
    EntityConnection connection =

        new EntityConnection("name= " + " ");

    connection.Open();
    EntityCommand cmd = connection.CreateCommand();
    cmd.CommandText = @"select q.OrderNum, q.VendorId,
        q.FilePath, q.OrderValue

        from " + " ".InboundQueues as q";

    EntityDataReader rdr =

        cmd. (CommandBehavior. );

    List<InboundQueue> queueItems = new List<InboundQueue>();
    while (rdr.Read ())
    {
        InboundQueue queueItem = new InboundQueue();
        queueItem.OrderNum = Convert.ToInt32(rdr["OrderNum"]);
        queueItem.VendorId = Convert.ToInt32(rdr["VendorId"]);
        queueItem.FilePath = rdr["FilePath"].ToString();
        queueItem.OrderValue = Convert.ToDecimal(rdr["OrderValue"]);
        queueItems.Add(queueItem);
    }
    rdr.Close ();
    connection.Close ();
    return queueItems;
}
                
```

Answer:

Explanation:

```

public List<Entities.InboundQueue> GetExternalOrders()
{
    EntityConnection connection =

        new EntityConnection("name= ExternalOrdersEntities ");

    connection.Open();
    EntityCommand cmd = connection.CreateCommand();
    cmd.CommandText = @"select q.OrderNum, q.VendorId,
        q.FilePath, q.OrderValue

        from ExternalOrdersEntities .InboundQueues as q";

    EntityDataReader rdr =

        cmd. ExecuteReader (CommandBehavior. SequentialAccess );
}
                
```

NEW QUESTION 18

The GetExternalOrder() method in the ExternalQueueService service is throwing a runtime error. The method must query the database for a record that matches the orderNum parameter passed to the method.

You need to modify the queryString string to retrieve the record. With which code segment should you replace line EQ64?

- ☐ A. `string queryString = @"SELECT q.OrderNum, q.VendorId, q.FilePath, q.OrderValue
FROM ExternalOrdersEntities.InboundQueues AS q WHERE q.OrderNum = @orderNum";`
- ☐ B. `string queryString = @"SELECT * FROM ExternalOrdersEntities.InboundQueues
WHERE OrderNum = @orderNum";`
- ☐ C. `string queryString = @"SELECT VALUE q FROM ExternalOrdersEntities.InboundQueues AS q
WHERE q.OrderNum = @orderNum";`
- ☐ D. `string queryString = @"SELECT VALUE FROM ExternalOrdersEntities.InboundQueues
WHERE OrderNum = @orderNum";`

- A. Option A
 B. Option B
 C. Option C
 D. Option D

Answer: C

NEW QUESTION 20

The DeleteExternalOrder() method in the ExternalQueueService service is not throwing a FaultException exception as defined by the FaultContractAttribute attribute in the IExternatQueueService.cs file. You need to throw the FaultException exception.

Which code segment can you insert at line EQ45 to achieve this goal? (Each correct answer presents a complete solution. Chose all that apply.)

- ☐ A. `string queryString = @"SELECT q.OrderNum, q.VendorId, q.FilePath, q.OrderValue
FROM ExternalOrdersEntities.InboundQueues AS q WHERE q.OrderNum = @orderNum";`
- ☐ B. `string queryString = @"SELECT * FROM ExternalOrdersEntities.InboundQueues
WHERE OrderNum = @orderNum";`
- ☐ C. `string queryString = @"SELECT VALUE q FROM ExternalOrdersEntities.InboundQueues AS q
WHERE q.OrderNum = @orderNum";`
- ☐ D. `string queryString = @"SELECT VALUE FROM ExternalOrdersEntities.InboundQueues
WHERE OrderNum = @orderNum";`

- A. Option A
 B. Option B
 C. Option C
 D. Option D

Answer: C

NEW QUESTION 25

You need to choose the appropriate data access technology for the children's book area of the web application. Which data access technology should you choose?

- A. Web Service
 B. LINQ to SQL
 C. ADO.NET Entity Framework
 D. WCF Data Services

Answer: C

NEW QUESTION 29

DRAG DROP

An XML file must be produced by the SaveFeaturedBooks() method of the Book class. The schema of the resulting XML file must be identical to the FeaturedBooks.xml file.

You need to write the code to produce the file. You have the following code:

```
XDocument document = new XDocument ();
XElement root = new XElement ("Target 1");
foreach (var book in books)
{
    XElement bookElement = new XElement ("book");
    bookElement.Add(new XElement ("id", book.Id) );
    bookElement.Add(new XElement ("Target 2", book.Title));
    root.Add (bookElement);
}
document.Add (root);
document.Save (Target 3);
```

Which code segments should you include in Target 1, Target 2 and Target 3 to complete the code? (To answer, drag the appropriate code segments to the correct targets in the answer area. Each code segment may be used once, more than once, or not at all. You may need to drag the split bar between panes or scroll to view content)

Code Segments	Answer Area
featured	Target 1: Code
books	Target 2: Code
title	Target 3: Code
name	
file	
output	

Answer:

Explanation:

Target 1:	featured
Target 2:	title
Target 3:	file

NEW QUESTION 31

You need to return the list of the top 100 books for the GetTopBooks() method. Which type should you use to retrieve the data?

- A. SqlDataReader
- B. DataSet
- C. DataTable
- D. Data View

Answer: A

NEW QUESTION 36

You need to choose the appropriate data access technology for the cookbook area of the web application. Which data access technology should you choose?

- A. WCF Data Services
- B. LINQ to SQL
- C. Entity Framework
- D. ADO.NET

Answer: A

Explanation: * Scenario: The cookbook functionality is contained within a client-side application that must connect to the server using HTTP and requires access to the data using JavaScript.

* WCF Data Services (formerly known as "ADO.NET Data Services") is a component of the

.NET Framework that enables you to create services that use the Open Data Protocol (OData) to expose and consume data over the Web or intranet by using the semantics of representational state transfer (REST). OData exposes data as resources that are addressable by URIs. Data is accessed and changed by using standard HTTP verbs of GET, PUT, POST, and DELETE

* WCF Data Services uses the OData protocol for addressing and updating resources. In this way, you can access these services from any client that supports OData. OData enables you to request and write data to resources by using well-known transfer formats: Atom, a set of standards for exchanging and updating data as XML, and JavaScript Object Notation (JSON), a text-based data exchange format used extensively in AJAX application.

NEW QUESTION 41

You need to create an OData filter expression that returns books that match the following characteristics:

? Published after 1/1/2000

? Have "Science" as the first word

Which filter statement should you use?

- ☐ A. `/books?$filter=PublishDate greaterthan datetime'2000-1-1' and startswith(Title, 'Science')`
- ☐ B. `/search?$filter=PublishDate greaterthan datetime'2000-1-1' and beginswith (Title, 'Science')`
- ☐ C. `/search?$filter=PublishDate gt datetime'2000-1-1' and beginswith(Title, 'Science')`
- ☐ D. `/books?$filter=PublishDate gt datetime'2000-1-1' and startswith(Title, 'Science')`

A. Option A

B. Option B

C. Option C

D. Option D

Answer: D

Explanation:

* gt

Greater than Example:

filter= Entry_No gt 610

Query on GLEntry service. Returns entry numbers 611 and higher.

* startswith filter=startswith(Name, 'S')

Query on Customer service. Returns all customers names beginning with "S".

NEW QUESTION 45

You need to update the ImportBooks() method to use database transactions. Which code segment should you use?

- A. `SqlConnection.BeginTransaction(IsolationLevel.RepeatableRead);`
- B. `SqlConnection.BeginTransaction(IsolationLeve.ReadUnconvnited);`
- C. `SqlConnection.BeginTransaction(IsolationLevel.Serializable);`
- D. `SqlConnection.BeginTransaction(IsolationLevel.Snapshot);`

Answer: B

Explanation:

* scenario: The ImportBooks() method must keep a copy of the data that can be accessed while new books are being imported without blocking reads.

* ReadUncommitted

A dirty read is possible, meaning that no shared locks are issued and no exclusive locks are honored.

NEW QUESTION 49

You need to implement the Get() method in the bookstore Web API application to be able to find books by using an ad hoc query.

Which method should you use?

- ☐ A.

```
public Book Get(int id)
{
    var book = bookRepository.Find(id);
    if (book == null)
    {
        throw new HttpResponseMessage(HttpStatusCode.NotFound);
    }
    return new List<Book> { book };
}
```
- ☐ B.

```
public List<Book> Get(int id)
{
    var book = bookRepository.Find(id);
    if (book == null)
    {
        throw new HttpResponseMessage(HttpStatusCode.NotFound);
    }
    return new List<Book> { book };
}
```
- ☐ C.

```
public IEnumerable<Book> Get()
{
    return bookRepository.All;
}
```
- ☐ D.

```
public IQueryable<Book> Get()
{
    return bookRepository.All;
}
```

- A. Option A
B. Option B
C. Option C
D. Option D

Answer: D

NEW QUESTION 51

You need to identify a solution to display the car brands. What should you include in the solution?

- A. Azure Automation
B. Azure RemoteApp
C. the Service Bus queue
D. a virtual private network (VPN)
E. the Service Bus topics
F. the Service Bus relay
G. ExpressRoute

Answer: C

Explanation: Azure Service Bus Messaging can safely use the QueueClient object for sending messages from concurrent asynchronous operations and multiple threads.

Scenario: The action in the Web API that returns the car brand must be asynchronous, while all other actions must be synchronous.

References: <https://docs.microsoft.com/en-us/azure/service-bus-messaging/service-bus-performance-improvements>

NEW QUESTION 55

ReportApp will shut down every night. However, data from the searches performed during the night must still be collected.

You need to recommend a solution to meet the performance requirements for home.aspx. What should you recommend?

- A. ViewState
B. MemoryCache
C. OutputCache
D. ApplicationCache

Answer: C

Explanation: Scenario: When home.aspx is displayed, the rendered page must be cached for 10 minutes. Page output caching

The output of an action method on a controller can be cached using the [OutputCache] attribute on the method. Actions methods that return views will have the rendered page cached, while methods returning JSON data will have that data saved. A number of properties on the OutputCacheAttribute class control how data is cached.

CacheProfile- If a number of methods will have the same cache settings, it makes sense to use the web.config file to create a cache profile that can be used across all these methods.

The Duration attribute of the CacheProfile determines how long, in seconds, the output should be cached. To save an item for 10 minutes, duration would be set to 600.

[OutputCache(Duration=600)]

References: <http://failedturing.blogspot.se/2014/10/microsoft-70-486-design-caching-strategy.html>

NEW QUESTION 57

DRAG DROP

You need to build the connection from ReportApp to read the search dat

Answer:

Explanation: References:

<https://docs.microsoft.com/en-us/azure/service-bus-messaging/service-bus-dotnet-get-started-with-queues>

<https://docs.microsoft.com/en-us/azure/service-bus-messaging/service-bus-queues-topics-subscriptions>

Case Study: 5

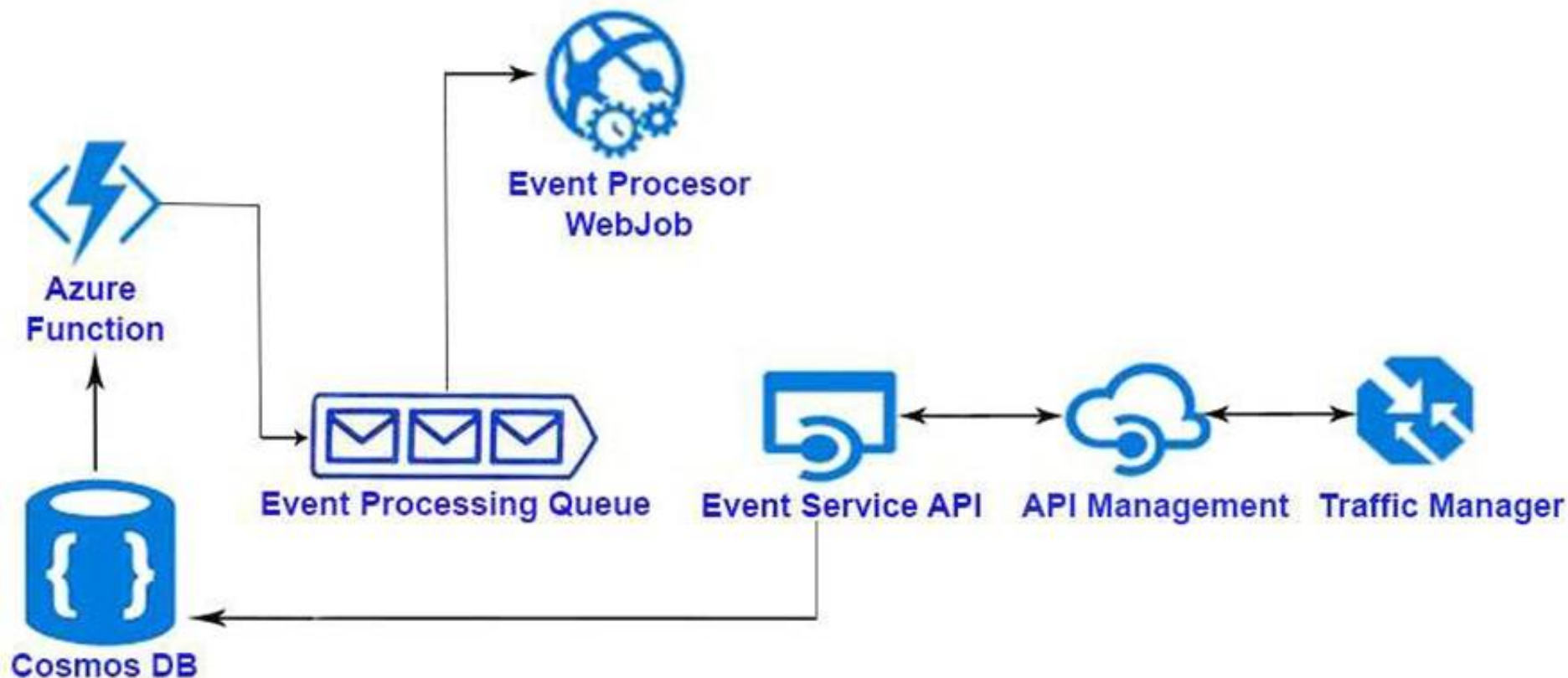
Trey Research Inc

Overview

Trey Research Inc. is a Software-as-a-Service (SaaS) company that provides hosted solutions for business partners around the world. The company is developing a solution that will allow business partners to manage events, including shareholder meetings and trade shows.

You hold meetings with key partners to identify requirements and constraints for the solution. You must minimize costs where possible.

You work with an Azure solutions architect to design the logical structure for the solution. The solution will use the following architecture:



Solution components

The solution will use Azure Traffic Manager to distribute traffic. The solution will use API Management to provide caching for the Event Service. Partner companies will interact with the solution by using the Event Service API. This API will be implemented as an ASP.NET Core Web API that runs as an Azure Web App. Event data will be stored in Cosmos DB using the Document API.

The solution will be highly available. You define regional Azure outages as periods of 60 seconds or more where the Event Service is not available.

An Azure WebJob named EventJob will be deployed with the Event Service Web App. The WebJob:

- ?Creates new computed events when partner events are created.

- ?Must be active whenever the Event Service is running.

- ?Is updated once a quarter.

Trey Research Inc. has developer teams that work with a variety of operating systems including Windows, Linux, and MacOS.

Event Service

Individual events must be immutable. Event data can be up to 800 kilobytes (KB) in size. The Event Service must meet the following requirements:

- ?Use REST-based design

- ?Cache data whenever possible.

- ?Support both JSON and XML-based data.

- ?Log customer information whenever data is modified.

- ?Include the X-Customer header in all calls to identify the partner. Regional access to the Event Service API

Data for partners in Germany and Brazil must be served from Azure datacenters in their respective geographies unless there is a regional Azure outage. All other partners must use the US West Azure datacenter.

Testing

All testing must interact directly with the Web App backend. Automated testing of the solution is performed using a remote third-party testing solution.

Event data

You identify the following requirements for the event data store:

- ?Each partner's event data must be stored in a Collection that is specific to the partner.

- ?Event data must be available if a regional Azure outage occurs.

- ?Event read and write operations for a single partner must always store events in the correct order.

Event API

Relevant portions of the app files are shown below. Line numbers are included for reference only and include a two-character prefix that denotes the specific file to which they belong.

Event.cs

```

EE01 public class Event
EE02 {
EE03     public string Name { get; set; }
EE04 }
  
```

IEventDB

```
IE01 public interface IEventDB
IE02 {
IE03     IEnumerable<Event> LoadEvents();
IE04     void SaveEvent (Event @event);
IE05     string CurrentCustomer { get; set; }
IE06 }
```

EventDB.cs

```
ED01 public class EventDB : IEventDB
ED02 {
ED03     private DocumentClient client;
ED04     public IEnumerable<Event> LoadEvents ()
ED05     {
ED06         . . .
ED07     }
ED08     public void SaveEvent(Event @event)
ED09     {
ED10         . . .
ED11     }
ED12     public string CurrentCustomer { get; set; }
ED13 }
```

EventController.cs

```
EC01 [Route("api/events")]
EC02 public class EventsController : Controller
EC03 {
EC04     public IFileProvider FileProvider { get; }
EC05     public IEventDB EventDB { get; }
EC06     public EventsController(IFileProvider fileProvider, IEventDB eventDB)
EC07     {
EC08         FileProvider = fileProvider;
EC09         EventDB = eventDB;
EC10     }
EC11
EC12 [HttpGet]
EC13 public IEnumerable<Event> GetEvents()
EC14 {
EC15     return EventDB.LoadEvents();
EC16 }
EC18
EC19 }
```

Event processing

Relevant portions of the app files are shown below. Line numbers are included for reference only and include a two-character prefix that denotes the specific file to which they belong.

Program.cs

```
PR01 using System
PR02 using System.Collections.Generic;
PR03 using System.Linq;
PR04 using System.Text;
PR05 using System.Threading.Tasks;
PR06 using Microsoft.Azure.WebJobs;
PR07 namespace EventJob
PR08 {
PR09     class Program
PR10     {
PR11         static void Main()
PR12         {
PR13             var config = new JobHostConfiguration();
PR14             var host = new JobHost(config);
PR15             host.RunAndBlock();
PR16         }
PR17     }
PR18 }
```


ComputedEventProcessor.cs

```
CE01 public class ComputedEventProcessorBebJob
CE02 {
CE03     public static void ProcessQueueMessage ([QueueTrigger ("eventprocess")] string message, TextWriter log)
CE04     {
CE05         . . .
CE06     }
CE07 }
```

Middleware Relevant portions of the app files are shown below. Line numbers are included for reference only and include a two-character prefix that denotes the specific file to which they belong.

CustomerMiddleware.cs

```
CM01 public class CustomerMiddleware
CM02 {
CM03     private readonly RequestDelegate _next;
CM04     public CustomerMiddleware (RequestDelegate next)
CM05     {
CM06         _next = next;
CM07     }
CM08     public async Task Invoke(HttpContext httpContext, IEventDB store)
CM09     {
CM10         var user = httpContext.Request.Headers["X-Customer"];
CM11         store.CurrentCustomer = user;
CM12         await _next(httpContext);
CM12     }
CM14 }
```

NEW QUESTION 59

Note: This question is part of a series of questions that present the same scenario. Each question in the series contains a unique solution that might meet the stated goals. Some question sets might have more than one correct solution, while others might not have a correct solution.

After you answer a question in this section, you will NOT be able to return to it. As a result, these questions will not appear in the review screen.

You need to ensure that testing, development, and end user access requirements are met.

Solution: Add Web App backend endpoints to Azure Traffic Manager and use weighted routing.

Does the solution meet the goal?

- A. Yes
- B. No

Answer: B

Explanation: Scenario: All testing must interact directly with the Web App backend. Automated testing of the solution is performed using a remote third-party testing solution.

NEW QUESTION 64

Note: This question is part of a series of questions that present the same scenario. Each question in the series contains a unique solution that might meet the stated goals. Some question sets might have more than one correct solution, while others might not have a correct solution.

After you answer a question in this section, you will NOT be able to return to it. As a result, these questions will not appear in the review screen.

You need to ensure that testing, development, and end user access requirements are met. Solution: Move the Web App backend to a private VNet.

Does the solution meet the goal?

- A. Yes
- B. No

Answer: A

Explanation: Scenario: All testing must interact directly with the Web App backend. Automated testing of the solution is performed using a remote third-party testing solution.

NEW QUESTION 69

You need to ensure that computed events are processed correctly.

What should you do?

- A. Move the WebJob to a different App Service plan.
- B. Select a deployment slot for the WebJob.
- C. Disable WebJobs during deployments.

D. Create an additional upgrade domain.

Answer: B

Explanation: Scenario: An Azure WebJob named EventJob will be deployed with the Event Service Web App. The WebJob:
References: <https://stackify.com/azure-deployment-slots/>

NEW QUESTION 73

You need to configure DNS for the Event service. How many DNS entries should you create?

- A. 1
- B. 2
- C. 3
- D. 4

Answer: C

Explanation: Scenario: Regional access to the Event Service API
Data for partners in Germany and Brazil must be served from Azure datacenters in their respective geographies unless there is a regional Azure outage. All other partners must use the US West Azure datacenter.

NEW QUESTION 78

DRAG DROP

You need to add code at line SU10 to ensure that event validation can occur.

How should you complete the code? To answer, drag the appropriate code segments to the

correct locations. Each code segment may be used once, more than once, or not at all. You may need to split bar between panes or scroll to view content.

NOTE: Each correct selection is worth one point.

Code Segments

DirectoryInfo

IFileProvider

IFileInfo

PhysicalFileProvider

EmbeddedFileProvider

CompositeFileProvider

IHostingEnvironment

IApplicationBuilder

Answer Area

```
services.AddSingleton< Code Segment , Code Segment >(sp=>
{
    return new Code Segment (sp.GetService< Code Segment >().ContentRootPath);
});
```

Answer:

Explanation:

Answer Area

```
services.AddSingleton< IApplicationBuilder , IHostingEnvironment >(sp=>
{
    return new IApplicationBuilder (sp.GetService< IHostingEnvironment >().ContentRootPath);
});
```

Case Study: 6 Mix Questions

NEW QUESTION 83

You are building an ADO.NET Entity Framework application.

You need to validate the conceptual schema definition language (CSDL), store schema definition language (SSDL), and mapping specification language (MSL) files.

Which Entity Data Model tool can you use? (Each correct answer presents a complete solution. Choose all that apply.)

- A. EDM Generator (EdmGen.exe)
- B. ADO.NET Entity Data Model Designer
- C. Entity Data Model Wizard
- D. Update Model Wizard

Answer: AB

NEW QUESTION 85

DRAG DROP

You are developing an ASP.NET Web API action method.

The action method must return the following JSON in the message body.

{" Name ":" Fabrikam", "Vendor Id": 9823, "Items": ["Apples", "Oranges"]} You need to return an anonymous object that is serialized to JSON.

What should you do? (To answer, drag the appropriate code segments to the correct location or locations in the answer area. Each code segment may be used once, more than once, or not at all. You may need to drag the split bar between panes or scroll to view content.)

"Fabrikam", VendorNumber = 9823,

"Fabrikam", VendorNumber = "9823",

new List<string> { "Apples", "Oranges" }

new List<string> { "Apples, Oranges" }

return new List<string>

return new

Answer Area

```

public object Get()
{
    [ ]
    {
        Name = [ ]
        Items = [ ]
    };
}
                    
```

Answer:

Explanation: Box 1: return new List<string>

Box 2: "Fabrikam", VendorNumber=9823, Box 3: new list<string>{"Apples", "oranges"}

NEW QUESTION 90

DRAG DROP

You are developing an ASP.NET Web API application that will be consumed by a web browser via a composite application that is served from another web domain.

You need to configure the Web API.

What should you do? (To answer, drag the appropriate XML elements to the correct location or locations in the answer area. Each XML element may be used once, more than once, or not at all. You may need to drag the split bar between panes or scroll to view content.)

Access-Control-Allow-Origin

Access-Control-Allow-Headers

Access-Control-Allow-Methods

Access-Control-Request-Method

Access-Control-Request-Headers

*

POST, GET

Content-Type

Answer Area

```

<httpProtocol>
  <customHeaders>
    <add name="Access-Control-Allow-Origin"
      value=" [ ] " />
    <add name=" [ ] "
      value="PUT, DELETE" />
    <add name=" [ ] "
      value=" [ ] " />
  </customHeaders>
</httpProtocol>
                    
```

Answer:

Explanation:

Answer Area	
Access-Control-Allow-Origin	<httpProtocol> <customHeaders> <add name="Access-Control-Allow-Origin"
Access-Control-Allow-Origin	value=" " " /> " />
Access-Control-Allow-Methods	<add name=" Access-Control-Allow-Methods " "
Access-Control-Allow-Methods	value="PUT, DELETE"/>
Access-Control-Allow-Headers	<add name=" Access-Control-Allow-Headers " "
Access-Control-Allow-Headers	value=" Content-Type " /> " />
POST, GET	</customHeaders> </httpProtocol>

NEW QUESTION 92

You are developing an ASP.NET MVC web application that contains the following HTML.

```
<table id= "customer" ></table>
```

You also have an ASP.NET Web API application that contains a call for retrieving customers. You must send and retrieve the data in the most compact format possible.

You need to update the HTML for the customers table to contain data from the Web API application.

Which script segment should you use?

☐ A.

```
<script>
$(function () {
    var $customers = $("#customers");
    $.ajax({
        url: "api/customers",
        dataType: "json",
        success: function (data) {
            ...
        }
    });
});
</script>
```

☐ B.

```
<script>
$(function () {
    var $customers = $("#customers");
    $.xml({
        url: "api/customers",
        dataType: "ajax",
        success: function (data) {
            ...
        }
    });
});
</script>
```

☐ C.

```
<script>
$(function () {
    var $customers = $("#customers");
    $.json({
        url: "api/customers",
        dataType: "ajax",
        success: function (data) {
            ...
        }
    });
});
</script>
```

☐ D.

```
<script>
$(function () {
    var $customers = $("#customers");
    $.ajax({
        url: "api/customers",
        dataType: "xml",
        success: function (data) {
            ...
        }
    });
});
</script>
```

- A. Option A
- B. Option B
- C. Option C
- D. Option D

Answer: A

NEW QUESTION 93

DRAG DROP

You are developing an ASP.NET MVC Web API application.

The method names of the Web API must match naming guidelines for RESTful services.

You need to create methods to support standard insert, select, update, and delete operations in an HTTP service. What should you do? (To answer, drag the appropriate HTTP methods to the correct row in the table in the answer area. Each HTTP method may be used once, more than once, or not at all. You may need to drag the split bar between panes or scroll to view content.)

GET
POST
INSERT
DELETE
CREATE
READ
UPDATE
ADD
PUT

Answer Area

Action	HTTP method	Relative URI
Retrieve a list of all customers		/api/customers
Retrieve a customer by id		/api/customers/ <i>id</i>
Retrieve a customer by category		/api/customer/?category= <i>category</i>
Create a new customer		/api/customers
Update a customer		/api/customers/ <i>id</i>
Remove a customer		/api/customers/ <i>id</i>

Answer:

Explanation:

Action	HTTP method	Relative URI
Retrieve a list of all customers	GET	/api/customers
Retrieve a customer by id	GET	/api/customers/ <i>id</i>
Retrieve a customer by category	GET	/api/customer/?category= <i>category</i>
Create a new customer	POST	/api/customers
Update a customer	PUT	/api/customers/ <i>id</i>
Remove a customer	DELETE	/api/customers/ <i>id</i>

NEW QUESTION 95

You are planning to migrate websites from IIS 6 to IIS 7.5. You do not have access to SSH or a VPN. You need to select a deployment tool to securely migrate the websites. Which tool should you use?

- A. RoboCopy
- B. Web Deploy
- C. Microsoft command-line FTP
- D. xCopy

Answer: B

NEW QUESTION 100

You are developing an ASP.NET MVC application.

Applications can be deployed to remote servers only by administrators who have elevated privileges. The administrators do not have access to Visual Studio 2012. You need to select a deployment tool to deploy the application to remote servers for testing. Which tool should you use?

- A. Copy Web Site Tool
- B. One-Click Publish
- C. Publish Web Site Tool
- D. Web Deployment Package

Answer: D

NEW QUESTION 105

You are preparing to develop a set of libraries for a company. The libraries must be shared across the company. You need to create a remote NuGet feed that exposes the libraries. What should you do? (Each answer presents part of the solution. Choose all that apply.)

- A. Install the NuGet.Feed Package.
- B. Install the NuGet.Server Package.
- C. Configure the Packages folder located in the system.webserver section of the web application's Web.config.
- D. Create a new Empty Web Site in Visual Studio 2012.
- E. Configure the Packages folder located in the appSettings section of the web application's Web.config.
- F. Add packages to the Packages folder.
- G. Create a new Empty Web Application in Visual Studio 2012.

Answer: BEFG

Explanation: Explanation/Reference:



NEW QUESTION 108

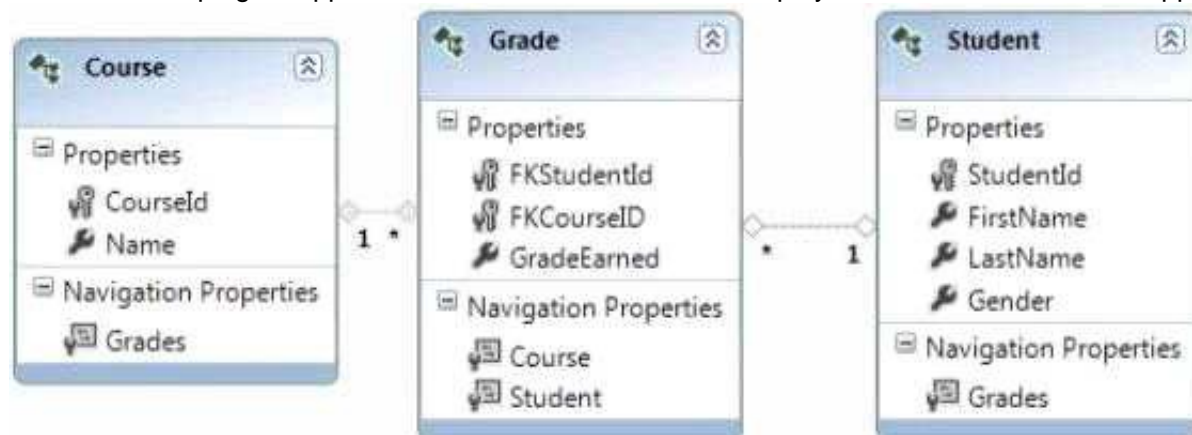
You develop an ASP.NET MVC application that is secured by using SSL. You are ready to deploy the application to production. The deployment package must include the installation of the SSL certificate. You need to configure the deployment package to meet the requirement. What should you do?

- A. Create a web publish pipeline target file with a custom web deploy target.
- B. In the Package/Publish settings of the project, select the All Files in this project option.
- C. Extend the CopyAllFilesToSingleFolder target in the project file.
- D. In the Build Events settings of the project, configure a pre-build event to include the SSL certificate.

Answer: A

NEW QUESTION 113

You are developing an application in Visual Studio 2012 to display student information. The application contains the following Entity Framework model.



The application contains a WCF data service named DirectoryService.svc. You need to create a query expression to display all of the grades for students whose first name is "John". How should you build the expression?

- A. `http://localhost:54946/DirectoryService.svc/Students?$filter=FirstName eq 'John' &$expand=Grades`
- B. `http://localhost:54946/DirectoryService.svc/Students?$filter=FirstName eq 'John'/Grades`
- C. `http://localhost:54946/DirectoryService.svc/Students?$filter=FirstName = 'John' &$expand=Grades`
- D. `http://localhost:54946/DirectoryService.svc/Grades/Students?$filter=FirstName eq 'John'`

Answer: A

NEW QUESTION 116

DRAG DROP

You are developing a WCF Data Services service in Visual Studio 2012 to display movie information from a SQL Server database that changes every 24 hours. The service is defined in the following class.

```
public class MovieService : DataService<MovieEntities>
{
    public static void InitializeService(DataServiceConfiguration config)
    {
        config.SetEntitySetAccessRule("Movies", EntitySetRights.AllRead);
        config.DataServiceBehavior.MaxProtocolVersion = DataServiceProtocolVersion.V2;
    }
}
```

The application contains the following Entity Framework model.



The service must only return data for movies that are currently in theaters.

You need to add a method to the MovieService class to filter the data.

How should you build the method? (To answer, drag the appropriate code segments to the correct location or locations in the answer area. Each code segment may be used once, more than once, or not at all. You may need to drag the split bar between panes or scroll to view content.)

ChangeInterceptor

QueryInterceptor

"Movies"

"MovieEntities"

Expression

Filter

Answer Area

```
public class MovieService : DataService<MovieEntities>
{
    public static void InitializeService(DataServiceConfiguration config)
    {
        config.SetEntitySetAccessRule("Movies", EntitySetRights.AllRead);
        config.DataServiceBehavior.MaxProtocolVersion =
            DataServiceProtocolVersion.V2;
    }

    [ ] ( [ ] )
    public [ ] <Func<Movie, bool>> ApplyTheaterFilter()
    {
        return movie => movie.IsInTheaters == true;
    }
}
```

Answer:

Explanation:

```
public class MovieService : DataService<MovieEntities>
{
    public static void InitializeService(DataServiceConfiguration config)
    {
        config.SetEntitySetAccessRule("Movies", EntitySetRights.AllRead);
        config.DataServiceBehavior.MaxProtocolVersion =
            DataServiceProtocolVersion.V2;
    }

    [ QueryInterceptor ( "Movies" ) ]
    public Expression <Func<Movie, bool>> ApplyTheaterFilter()
    {
        return movie => movie.IsInTheaters == true;
    }
}
```

NEW QUESTION 120

DRAG DROP

You are developing a self-hosted WCF service that returns stock market information. The service must be discoverable by any client application.

You need to build the service host.

How should you build the host? (To answer, drag the appropriate code segments to the correct location or locations in the answer area. Each code segment may be used once, more than once, or not at all. You may need to drag the split bar between panes or scroll to view content.)

Answer Area	
<div>UdpDiscoveryEndpoint</div> <div>DiscoveryEndpoint</div> <div>ServiceBehaviorAttribute</div> <div>ServiceDiscoveryBehavior</div> <div>ServiceHost</div>	<pre>static void Main(string[] args) { Uri StockURI = new Uri("http://localhost:8733/StockTicker"); var mytype = typeof(StockTickerService); using ([] host = new [] (mytype, StockURI) { host.AddServiceEndpoint(typeof(IStockTickerService), new WSHttpBinding(), ""); host.Description.Behaviors.Add(new [] ()); host.AddServiceEndpoint(new [] ()); host.Open(); Console.ReadLine(); host.Close(); } } }</pre>

Answer:

Explanation:


```
static void Main(string[] args)
{
    Uri StockURI = new Uri("http://localhost:8733/StockTicker");
    var mytype = typeof(StockTickerService);

    using ( ServiceHost host
        = new ServiceHost (mytype, StockURI))
    {
        host.AddServiceEndpoint (typeof (IStockTickerService),
            new WSHttpBinding(), "");

        host.Description.Behaviors.Add(new ServiceDiscoveryBehavior ());

        host.AddServiceEndpoint (new UdpDiscoveryEndpoint ());

        host.Open();
        Console.ReadLine();
        host.Close();
    }
}
```

NEW QUESTION 124

DRAG DROP

You are developing a WCF service.

You need to implement transport security by using NTLM authentication and NetTcpBindings.

Which configuration values should you use? (To answer, drag the appropriate configuration values to the correct location or locations in the answer area. Each configuration value may be used once, more than once, or not at all. You may need to drag the split bar between panes or scroll to view content.)

	Answer Area
binding="netTcpBinding"	<system.serviceModel>
binding="Duplex"	<protocolMapping>
binding="NtlmTcp"	<add scheme="https" />
mode="netBindingTcp"	</protocolMapping>
mode="Transport"	<bindings>
mode="Duplex"	<wsHttpBinding>
clientCredentialType="netTcpBinding"	<binding>
clientCredentialType="NtlmTcp"	<security >
clientCredentialType="Ntlm"	<transport />
	</security>
	</binding>
	</wsHttpBinding>
	</bindings>
	</system.serviceModel>

Answer:

Explanation:

	Answer Area
binding="Duplex"	<system.serviceModel>
binding="NtlmTcp"	<protocolMapping>
mode="netBindingTcp"	<add scheme="https" binding="netTcpBinding" />
mode="Duplex"	</protocolMapping>
clientCredentialType="netTcpBinding"	<bindings>
clientCredentialType="NtlmTcp"	<wsHttpBinding>
	<binding>
	<security mode="Transport" >
	<transport clientCredentialType="Ntlm" />
	</security>
	</binding>
	</wsHttpBinding>
	</bindings>
	</system.serviceModel>

NEW QUESTION 126

DRAG DROP

You are developing a WCF service. The service will stream messages to clients on the internal network.

You must use Windows Authentication, and all messages must be binary encoded. You need to configure the service.

What should you do? (To answer, drag the appropriate elements to the correct location or locations in the answer area. Each element may be used once, more than once, or not at all. You may need to drag the split bar between panes or scroll to view content.)

namedNetBinding

netTcpBinding

binHttpsBinding

httpBasicBinding

mode="Ignore"

mode="Transport"

mode="Direct"

Answer Area

```

<system.serviceModel>
  <bindings>
    <[ ]>
      <binding>
        <security [ ] />
      </binding>
    </[ ]>
  </bindings>
</system.serviceModel>

```

Answer:

Explanation:

```

<system.serviceModel>
  <bindings>
    <netTcpBinding>
      <binding>
        <security mode="Transport" />
      </binding>
    </netTcpBinding>
  </bindings>
</system.serviceModel>

```

NEW QUESTION 131

You are developing a WCF service.

A new service instance must be created for each client request. You need to choose an instancing mode.

Which instancing mode should you use?

- A. Single
- B. PerRequest
- C. PerCall
- D. Multiple
- E. PerSession

Answer: C

NEW QUESTION 136

DRAG DROP

You are creating a WCF service.

The service endpoints must be exposed to the Windows Azure Service Bus. The service bus has a namespace named RestaurantSB. The key provider is "owner".

You need to modify the web.config file to expose the endpoints.

How should you modify the file? (To answer, drag the appropriate attributes to the correct location or locations in the answer area. Each attribute may be used once, more than once, or not at all. You may need to drag the split bar between panes or scroll to view content.)

issuerName

Contract

issuerKey

User

issuerSecret

Answer Area

```

<services>
  <service name="RestaurantService.MenuService">

    <endpoint [ ]="RestaurantService.IMenuService"

      binding="netTcpRelayBinding"
      address="sb://RestaurantServiceBus.servicebus.windows.net/Menu"
      behaviorConfiguration="sbBehavior"/>
    </service>
  </services>
  <behaviors>
    <endpointBehaviors>
      <behavior name="sbBehavior">
        <transportClientEndpointBehavior>
          <tokenProvider>
            <sharedSecret
              [ ]="owner"
              [ ]="1oAFgNsbaN8+UIN737K="/>

          </tokenProvider>
        </transportClientEndpointBehavior>
      </behavior>
    </endpointBehaviors>
  </behaviors>

```

Answer:

Explanation:

```

<services>
  <service name="RestaurantService.MenuService">

    <endpoint Contract [ ]="RestaurantService.IMenuService"

      binding="netTcpRelayBinding"
      address="sb://RestaurantServiceBus.servicebus.windows.net/Menu"
      behaviorConfiguration="sbBehavior"/>
    </service>
  </services>
  <behaviors>
    <endpointBehaviors>
      <behavior name="sbBehavior">
        <transportClientEndpointBehavior>
          <tokenProvider>
            <sharedSecret
              issuerName [ ]="owner"
              issuerSecret [ ]="1oAFgNsbaN8+UIN737K="/>

          </tokenProvider>
        </transportClientEndpointBehavior>
      </behavior>
    </endpointBehaviors>
  </behaviors>

```

NEW QUESTION 139

DRAG DROP

You are developing a WCF service.

You need to implement transport security by using NTLM authentication and NetTcpBindings.

Which configuration values should you use? (To answer, drag the appropriate configuration values to the correct location or locations in the answer area. Each configuration value may be used once, more than once, or not at all. You may need to drag the split bar between panes or scroll to view content.)

	Answer Area
binding="netTcpBinding"	<system.serviceModel> <protocolMapping>
binding="Transport"	
binding="Ntlm"	<add scheme="https" />
mode="netTcpBinding"	</protocolMapping>
mode="Transport"	<bindings>
mode="Ntlm"	<wsHttpBinding>
clientCredentialType="netTcpBinding"	<binding>
clientCredentialType="Transport"	<security>
clientCredentialType="Ntlm"	<transport>
	</security>
	</binding>
	</wsHttpBinding>
	</bindings>
	</system.serviceModel>

Answer:

Explanation:

```
<system.serviceModel>
  <protocolMapping>

    <add scheme="https" binding="netTcpBinding" />

  </protocolMapping>
  <bindings>
    <wsHttpBinding>
      <binding>

        <security mode="Transport">

          <transport clientCredentialType="Ntlm" />

        </security>
      </binding>
    </wsHttpBinding>
  </bindings>
</system.serviceModel>
```

NEW QUESTION 141

DRAG DROP

You are developing an ASP.NET Web API action method.

The action method must return the following JSON in the message body.

{"Name": "Fabrikam", "VendorId" :9823, "Items": ["Dogs", "Cats"]} > You need to return an anonymous object that is serialized to JSON.

What should you do? (To answer, drag the appropriate code segments to the correct location or locations in the answer area. Each code segment may be used once, more than once, or not at all. You may need to drag the split bar between panes or scroll to view content.)

	Answer Area
"Fabrikam", VendorNumber = 9823,	public object Get()
"Fabrikam", VendorNumber = "9823",	{
new List<string> { "Dogs", "Cats" }	{
new List<string> { "Dogs, Cats" }	Name =
return new List<string>	Items =
return new	};
	}

Answer:

Explanation: Box 1: return new List<string>

Box 2: "Fabrikam", VendorNumber=9823, Box 3: new list<string>{"Dogs", "Cats"}

NEW QUESTION 143

You are designing an ASP.NET Web API application.

You need to select an HTTP verb to allow blog administrators to remove a comment. Which HTTP verb should you use?

- A. PUT
- B. DELETE
- C. POST
- D. GET

Answer: B

NEW QUESTION 144

DRAG DROP

You are developing an ASP.NET Web API application for currency conversion that will be consumed by a web browser by using a composite application that is served from another web domain.

You need to configure the Web API.

What should you do? (To answer, drag the appropriate XML elements to the correct location or locations in the answer area. Each XML element may be used once, more than once, or not at all. You may need to drag the split bar between panes or scroll to view content.)

	Answer Area
Access-Control-Allow-Origin	<code><httpProtocol></code>
Access-Control-Allow-Headers	<code><customHeaders></code>
Access-Control-Allow-Methods	<code><add name="Access-Control-Allow-Origin"</code>
Access-Control-Allow-Request-Method	<code>value="</code> <input type="text"/> <code>"/></code>
Access-Control-Allow-Request-Headers	<code><add name="</code> <input type="text"/> <code>"</code>
*	<code>value="PUT, DELETE"/></code>
POST, GET	<code><add name="</code> <input type="text"/> <code>"</code>
Content-Type	<code>value="</code> <input type="text"/> <code>"/></code>
	<code></customHeaders></code>
	<code></httpProtocol></code>

Answer:

Explanation:

	Answer Area
Access-Control-Allow-Origin	<code><httpProtocol></code>
	<code><customHeaders></code>
	<code><add name="Access-Control-Allow-Origin"</code>
	<code>value="</code> <input type="text"/> <code>"/></code>
Access-Control-Allow-Request-Method	<code><add name="</code> <input type="text"/> <code>"</code>
Access-Control-Allow-Request-Headers	<code>value="PUT, DELETE"/></code>
	<code><add name="</code> <input type="text"/> <code>"</code>
POST, GET	<code>value="</code> <input type="text"/> <code>"/></code>
	<code></customHeaders></code>
	<code></httpProtocol></code>

NEW QUESTION 147

You are developing an ASP.NET MVC application. The application is an order processing system that uses the ADO.NET Entity Framework against a SQL Server database. It has a controller that loads a page that displays all orders along with customer information. Lazy loading has been disabled.

The Order class is shown below.

```
public partial class Order
{
    ...
    public string CustomerID { get; set; }
    ...
    public virtual Customer Customer { get; set; }
}
```

You need to return the orders and customer information in a single round trip to the database. Which code segment should you use?

- ☐ A.

```
public ActionResult Index()
{
    IQueryable<Order> orders = db.Orders;
    orders = orders.Include("Customer");
    return View(orders.ToList());
}
```
- ☐ B.

```
public ActionResult Index()
{
    IQueryable<Order> orders = db.Orders.Include("Order.Customer");
    return View(orders.ToList());
}
```
- ☐ C.

```
public ActionResult Index()
{
    IQueryable<Order> orders = db.Orders;
    orders.Select(o => o.Customer).Load();
    return View(orders.ToList());
}
```
- ☐ D.

```
public ActionResult Index()
{
    IQueryable<Order> orders = db.Orders;
    return View(orders.ToList());
}
```

- A. Option A
 B. Option B
 C. Option C
 D. Option D

Answer: A

NEW QUESTION 152

You are developing an ASP.NET MVC application that reads and writes data from a SQL Server database. You need to maintain data integrity in all situations that use transactions.

- A. ReadUncommitted
 B. Repeatable
 C. Serializable
 D. ReadCommitted

Answer: C

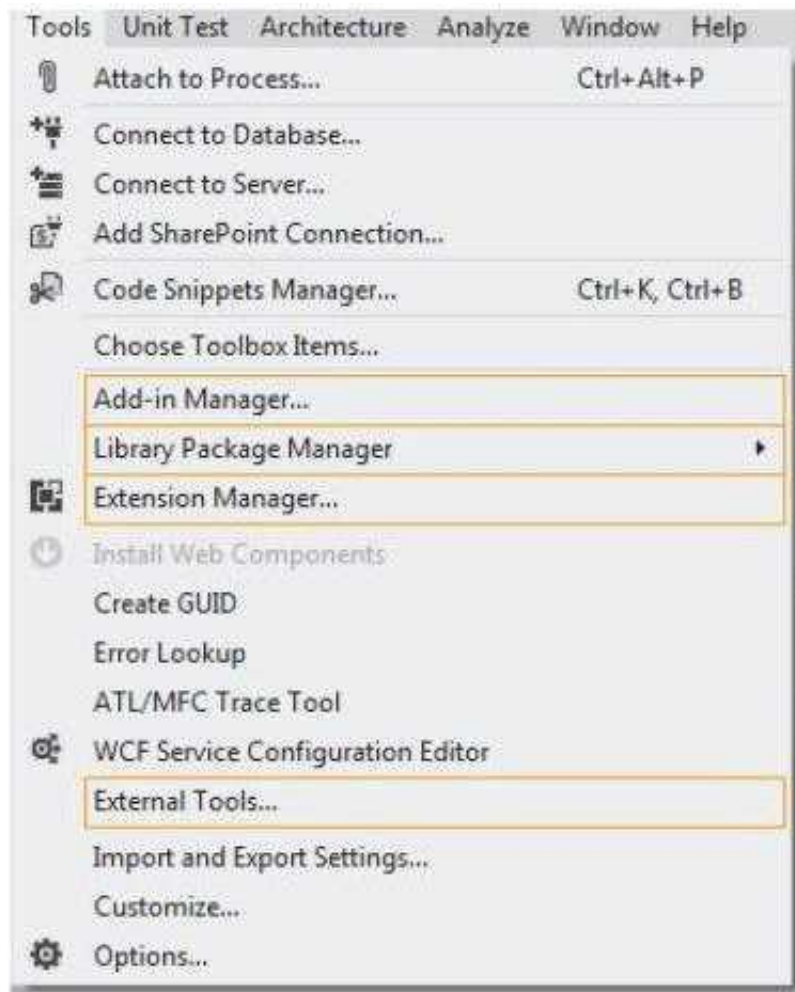
NEW QUESTION 156

HOTSPOT

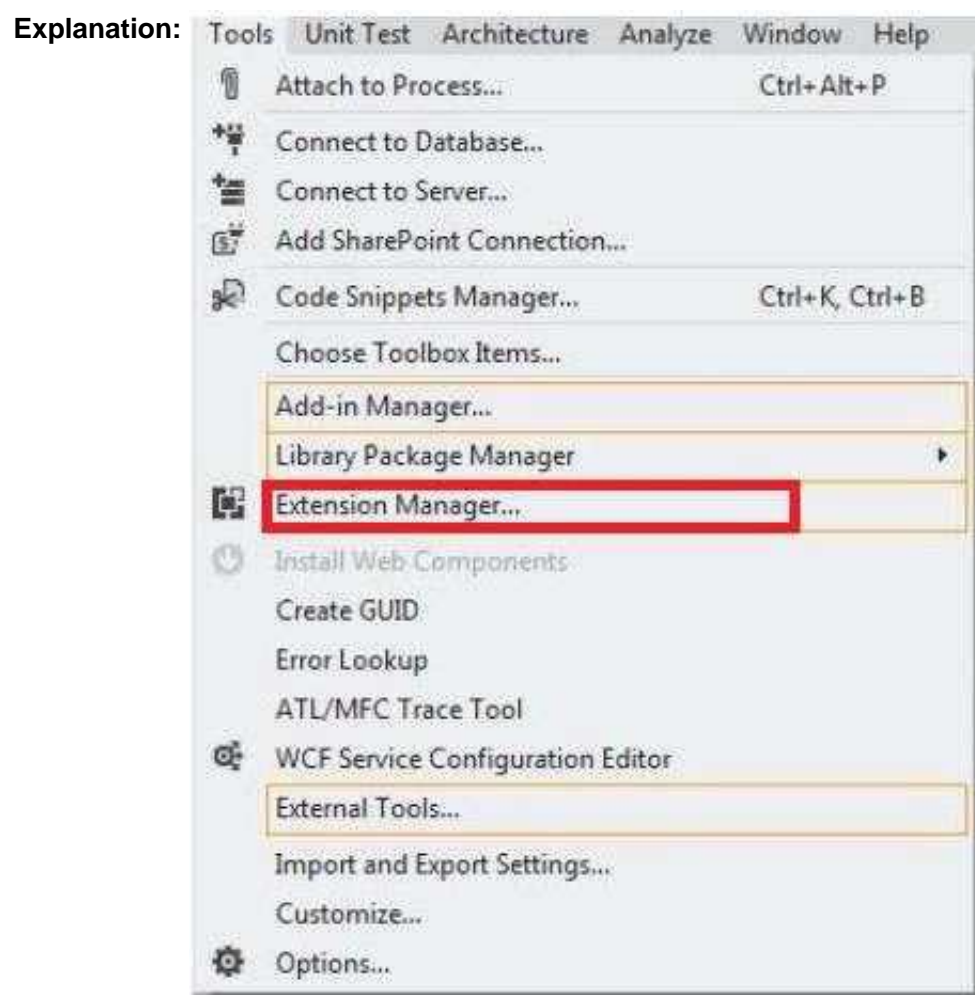
You are supporting an application that uses the ADO.NET Entity Framework to query and access data.

The latest version of Entity Framework contains bug fixes that will improve performance. You need to update Entity Framework.

Which Visual Studio 2012 menu item should you choose? (To answer, select the appropriate menu item in the answer area.)



Answer:



NEW QUESTION 161

You are developing an ASP.NET MVC application.

Deployment administrators do not have access to Visual Studio 2102, but will have the elevated permissions required to deploy the application to the servers. You need to select a deployment tool for use by the deployment administrators. Which tool should you use?

- A. Publish Web Site Tool
- B. Web Deployment Package
- C. One-Click Publish
- D. Deployment Package Editor

Answer: B

NEW QUESTION 164

HOTSPOT

You are developing an ASP.NET MVC application. It is ready for deployment to the production web server.

A local SQL Express .MDF file was used by the application during development The deployment has the following requirements:

?The deployment must merge the assemblies on the local machine with those on the host.

?The deployment must publish the local database to the remote Microsoft SQL server.
You need to configure the web package settings for deployment.
Which settings should you use? (To answer, select the appropriate setting or settings in the answer area.)

Package/Publish enables you to deploy your Web application to Web servers.
[Learn more about Package/Publish Web](#)

Items to deploy (applies to all deployment methods)

Only files needed to run this application
All files in this project
All files in this project folder

☐ Exclude generated debug symbols
☐ Exclude files from the App_Data folder
☐ Precompile this application before publishing

Items to deploy (applies to Web Deploy only)

☐ Include all databases configured in Package/Publish SQL tab [Open Settings](#)
☐ Include IIS settings as configured in IIS Express
☐ Include application pool settings used by this Web project

Answer:

Explanation: Package/Publish enables you to deploy your Web application to Web servers.
[Learn more about Package/Publish Web](#)

Items to deploy (applies to all deployment methods)

Only files needed to run this application
All files in this project
All files in this project folder

☐ Exclude generated debug symbols
☐ Exclude files from the App_Data folder
☐ Precompile this application before publishing

Items to deploy (applies to Web Deploy only)

☐ Include all databases configured in Package/Publish SQL tab [Open Settings](#)
☐ Include IIS settings as configured in IIS Express
☐ Include application pool settings used by this Web project

NEW QUESTION 168

You are developing a Microsoft Azure web application. The application will be deployed to 10 web role instances. A minimum of 8 running instances is needed to meet scaling requirements.

You need to configure the application so that upgrades are performed as quickly as possible, but do not violate scaling requirements.

How many upgrade domains should you use?

- A. 1
- B. 2
- C. 5
- D. 10

Answer: B

Explanation: The .csdef is only used for Cloud Services, not for VMs. So regardless of what you set or even how you try to do it, Azure VM UD's come in groups of 5. With 8 VMs, that means you'll have 2 UD's.

NEW QUESTION 169

DRAG DROP

You are developing a WCF service application.

The application must meet the following requirements:

?Operations must have 30 second timeouts.

?The service must have a transaction scope.

?Transactions must flow from the client to the server.

You need to write a transactional service contract and implementation class to meet the requirements.

You have the following code:

```
Target 1
interface ITransactionalService
{
    [OperationContract]
    Target 2
    Guid Foo (string x1, int x2);
}
Target 3
public class TransactionService: ITransactionalService
{
    Target 4
    public Guid Foo (string x1, int x2)
    {
        throw new NotImplementedException ();
    }
}
```

Which code segments should you include in Target 1, Target 2, Target 3 and Target 4 to complete the code? {To answer, drag the appropriate code segments to the correct targets in the answer area. Each code segment may be used once, more than once, or not at all. You may need to drag the split bar between panes or scroll to view content.)

Code Segments

[TransactionFlow(TransactionFlowOption.Allowed)]

[TransactionFlow(TransactionFlowOption.Mandatory)]

[OperationBehavior(TransactionScopeRequired = true)]

[OperationBehavior(TransactionScope.Required)]

[ServiceBehavior(TransactionTimeout = "00:00:30")]

[ServiceBehavior(TransactionTimeout = 30)]

[ServiceContract]

Answer Area

Target 1:

Code Segment

Target 2:

Code Segment

Target 3:

Code Segment

Target 4:

Code Segment

Answer:

Explanation:

Target 1:

[ServiceContract]

Target 2:

[TransactionFlow(TransactionFlowOption.Mandatory)]

Target 3:

[ServiceBehavior(TransactionTimeout = "00:00:30")]

Target 4:

[OperationBehavior(TransactionScopeRequired = true)]

NEW QUESTION 170

DRAG DROP

You are developing a WCF service.

You need to configure the web.config file to ensure that metadata is exposed only via the MEX protocol.

You have the following markup:


```
<services>
  <service behaviorConfiguration="behavior"
    name="CustomerService.Service">
    <endpoint binding="basicHttpBinding"
      contract="CustomerService.IService" />
    <endpoint address="mex" binding="Target 1"
      contract="Target 2" />
  </service>
</services>
<behaviors>
  <serviceBehaviors>
    <behavior name="behavior">
      <serviceMetadata
        Target 3="Target 4" />
    </behavior>
  </serviceBehaviors>
</behaviors>
```

Which XML elements should you include in Target 1, Target 2, Target 3 and Target 4 to complete the markup? (To answer, drag the appropriate XML elements to the correct targets in the answer area. Each XML element may be used once, more than once, or not at all. You may need to drag the split bar between panes or scroll to view content.)

XML Elements	Answer Area
<div>httpGetBinding</div>	Target 1: <div>XML Element</div>
<div>httpGetEnabled</div>	Target 2: <div>XML Element</div>
<div>mexHttpBinding</div>	Target 3: <div>XML Element</div>
<div>mexTcpBinding</div>	Target 4: <div>XML Element</div>
<div>mexNamedPipeBinding</div>	
<div>true</div>	
<div>false</div>	
<div>CustomerService.IService</div>	
<div>IMetadataExchange</div>	

Answer:

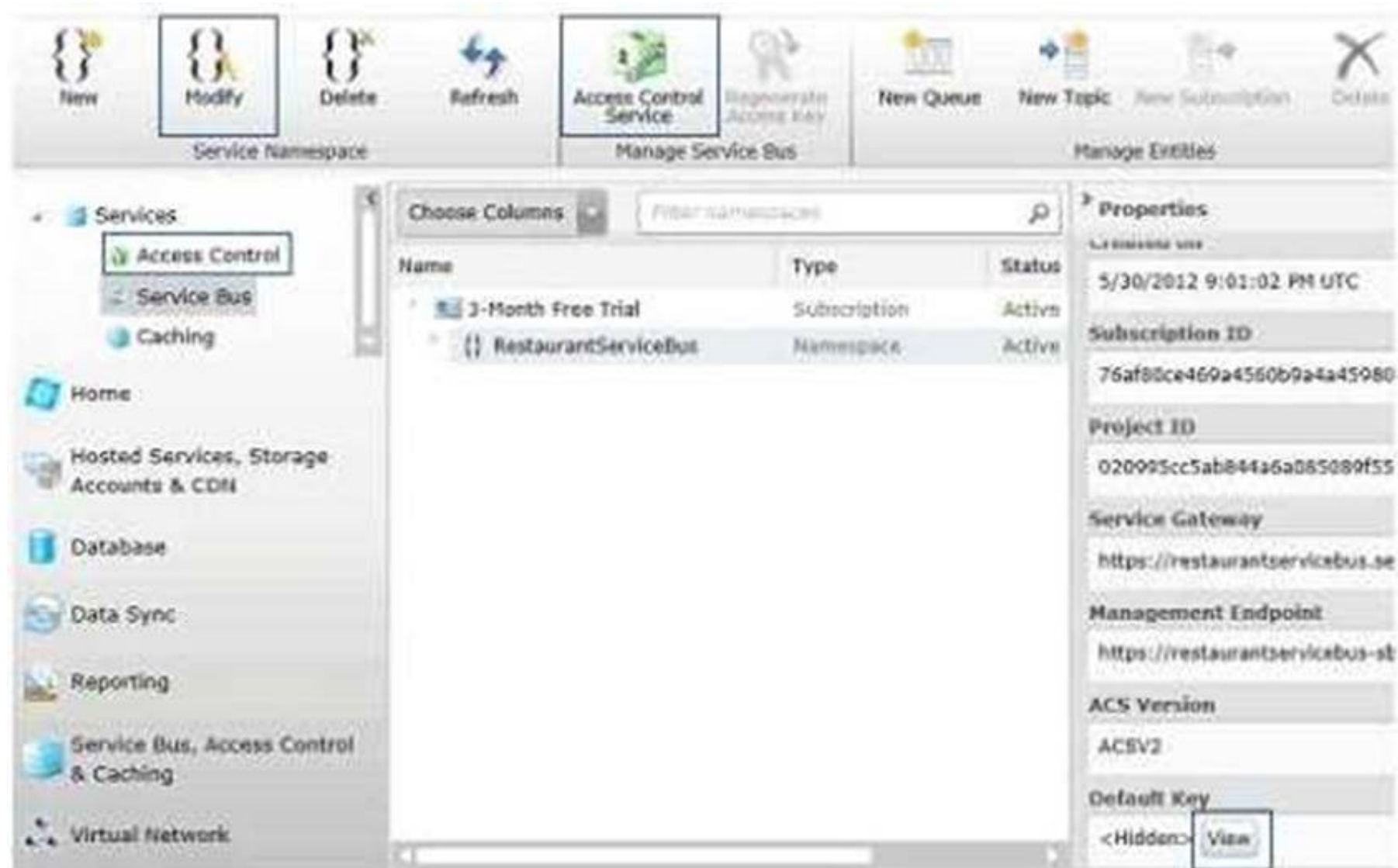
Explanation:

Target 1:	<div>mexHttpBinding</div>
Target 2:	<div>IMetadataExchange</div>
Target 3:	<div>httpGetEnabled</div>
Target 4:	<div>false</div>

NEW QUESTION 172

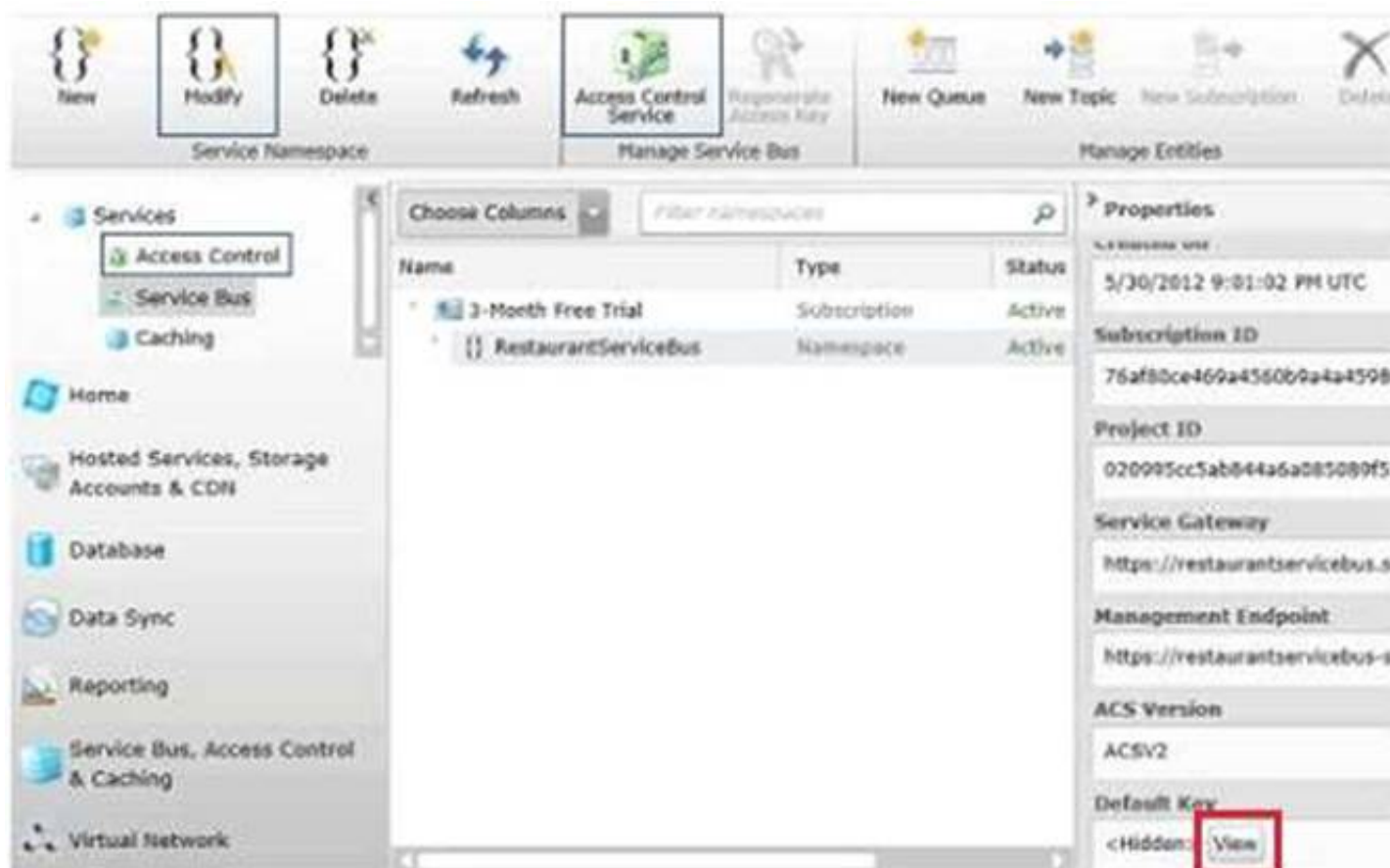
HOTSPOT

You are developing a WCF service in Visual Studio 2013 that integrates with the Microsoft Azure service bus relay. The Azure service bus namespace is named RestaurantServiceBus You need to obtain the issuer name and secret. What should you do? (To answer, select the appropriate option in the answer area.)



Answer:

Explanation:



NEW QUESTION 177

DRAG DROP

You are developing an ASP.NET MVC Web API application.

The methods of the Web API must return details about the result of the operation. You need to create a method to add products.

You have the following code:

```
public Target 1 PostProduct (Target 2 item)
{
    item = repository.Add(item);
    var response = new Target 3 <Product>(
        item, Target 4 .Created);
    string uri = Url.Route("DefaultApi", new { id = item.Id});
    response.Headers Target 5
    return response;
}
```

Which code segments should you include in Target 1, Target 2, Target 3, Target 4 and Target 5 to complete the code? (To answer, drag the appropriate code

segments to the correct targets in the answer area. Each code segment may be used once, more than once, or not at all. You may need to drag the split bar between panes or scroll to view content.)

Code Segments

HttpResponsMessage

HttpStatusCode

Product

.Location = new Uri(uri);

.Add(new Uri(uri));

Answer Area

Target 1:

Code Segment

Target 2:

Code Segment

Target 3:

Code Segment

Target 4:

Code Segment

Target 5:

Code Segment

Answer:

Explanation:

Target 1:

HttpResponsMessage

Target 2:

Product

Target 3:

HttpResponsMessage

Target 4:

HttpStatusCode

Target 5:

.Location = new Uri(uri);

NEW QUESTION 181

HOTSPOT

You are updating an existing multitenant ASP.NET MVC application for medical clinics. The application aggressively uses output caching to improve performance by caching content for 36 hours. The application uses a query string parameter named "clinicID" that contains the clinic that the user is currently viewing. Users report that they are occasionally seeing data for the wrong clinic. Users also report that sensitive data is stored in the browser cache folder on their computers. You need to configure web.config to resolve the reported problems. You have the following markup:

```
< caching >
  < outputCacheSettings >
    < outputCacheProfiles >
      < clear />
      < add name="primaryCache"
        Target 1
        Target 2
        Target 3 >/
    < /outputCacheProfiles >
  < /outputCacheSettings >
< / caching >
```

Which markup segments should you include in Target 1, Target 2 and Target 3 to complete the markup? (To answer, select the correct markup segment from each drop-down list in the answer area.)

Target 1:

▼

noStore="true"

noStore="false"

Target 2:

▼

varByCustom="clinicID"

varByParam="clinicID"

varByControl="clinicID"

Target 3:

▼

duration="129600"

duration="36h"

Answer:

Explanation:

Target 1:

▼

noStore="true"

noStore="false"

Target 2:

▼

varByCustom="clinicID"

varByParam="clinicID"

varByControl="clinicID"

Target 3:

▼

duration="129600"

duration="36h"

NEW QUESTION 183

DRAG DROP

You have a UI element library.

You need to build a NuGet package to integrate the library into your projects.

What should you do? (To answer, drag the appropriate code elements to the correct location or locations in the answer area. Each code element may be used once, more than once, or not at all. You may need to drag the split bar between panes or scroll to view content.)

Code Elements	Answer Area
nupkg	1. Define the package in a . Code file.
nuspec	2. Build the package with the following command.
Build	NuGet Code MyPackage. Code
Pack	

Answer:

Explanation: Reference: Creating and Publishing a Package <http://docs.nuget.org/create/creating-and-publishing-a-package>

NEW QUESTION 188

You are developing an ASP.NET MVC application. The application has a page that updates an image stored in a database. Members of the EntityClient namespace are used to access an ADO.NET Entity Framework data model. Images and associated metadata are stored in a single database table. You need to run a single query that updates an image and associated metadata in the database while returning only the number of affected rows. Which method of the EntityCommand type should you use?

- A. ExecuteNonQuery()
- B. ExecuteScalar()
- C. ExecuteDbDataReader()
- D. ExecuteReader()

Answer: A

NEW QUESTION 191

You are developing an ASP.NET MVC application that reads and writes data from a SQL Server database. You need to maintain data integrity including retrieving identical sets across reads in all situations that use transactions. Which isolation level should you use?

- A. Repeatable
- B. Serializable
- C. ReadUncommitted
- D. ReadCommitted

Answer: A

Explanation: REPEATABLE READ

Specifies that statements cannot read data that has been modified but not yet committed by other transactions and that no other transactions can modify data that has been read by the current transaction until the current transaction completes.

NEW QUESTION 194**DRAG DROP**

You are developing a RESTful application by using ASP.NET MVC. The application is a pet management system and implements the following method in a controller for retrieving pet data.

```
public Pet Get(int id)
{
    return new PetRepository().GetPetById(id);
}
```

The method must only accept JSON data using the standard MIME type.

You need to implement a controller that saves pet data and return a properly formatted HTTP/1.1 protocol response.

You have the following code:

```
public Target 1 Post ()
{
    if (Request.Content.Headers.ContentType.MediaType !=
        Target 2)
    {
        throw new HttpResponseException(JsonMessage);
    }
    Pet pet = new Pet ();
    var response = new Target 3 (pet,
        HttpStatusCode.Created);
    var relativePath = Target 4 ;
    response.Headers.Location = new Uri (Request.RequestUri,
        relativePath);
    return response;
}
```

Which code segments should you include in Target 1, Target 2, Target 3 and Target 4 to complete the code? (To answer, drag the appropriate code segments to the correct targets in the answer area. Each code segment may be used once, more than once, or not at all. You may need to drag the split bar between panes or scroll to view content.)

Code Segments

ActionResult

HttpResponseMessage<Pet>

HttpMessageContent

"/api/get/pet/" + pet.Id

"/pet/get/" + pet.Id

"/api/pet/" + pet.Id

"text/json"

"json"

"application/json"

Answer Area

Target 1: Code Segment

Target 2: Code Segment

Target 3: Code Segment

Target 4: Code Segment

Answer:

Explanation:

Target 1: HttpResponseMessage<Pet>

Target 2: "application/json"

Target 3: HttpResponseMessage<Pet>

Target 4: "/api/pet/" + pet.Id

NEW QUESTION 199

DRAG DROP

You are developing an ASP.NET MVC Web API application.

The methods of the Web API must return details about the result of the operation. You need to create methods to update and delete products.

You have the following code:

```
public void PutProduct (int id, Product contact)
{
    contact.Id = id;
    if (!repository.Update(contact))
    {
        throw new Target 1 (
            new Target 2 (
                HttpStatusCode. Target 3 ));
    }
}
public HttpResponseMessage DeleteProduct (int id)
{
    repository.Remove (id);
    return new Target 4 (
        HttpStatusCode. Target 5 );
}
```

Which code segments should you include in Target 1, Target 2, Target 3, Target 4 and Target 5 to complete the code? (To answer, drag the appropriate code segments to the correct targets in the answer area. Each code segment may be used once, more than once, or not at all. You may need to drag the split bar between panes or scroll to view content.)

Code Segments	Answer Area
<code>HttpResponseException</code>	Target 1: <input type="text" value="Code Segment"/>
<code>HttpResponseMessage</code>	Target 2: <input type="text" value="Code Segment"/>
<code>NotFound</code>	Target 3: <input type="text" value="Code Segment"/>
<code>NoContent</code>	Target 4: <input type="text" value="Code Segment"/>
	Target 5: <input type="text" value="Code Segment"/>

Answer:

Explanation:

Target 1:	<code>HttpResponseException</code>
Target 2:	<code>HttpResponseMessage</code>
Target 3:	<code>NotFound</code>
Target 4:	<code>HttpResponseMessage</code>
Target 5:	<code>NoContent</code>

NEW QUESTION 201

DRAG DROP

You are developing a self-hosted WCF service to display data about books. The solution contains a service named BookService that implements the IBookService interface.

You need to expose the metadata in the service host programmatically. You have the following code:

```
static void Main(string[] args)
{
    Target 1 host = new Target 2 (
        typeof(BookService), new Uri(ServiceUrl));
    host.AddServiceEndpoint(
        typeof(IBookService), new WSHttpBinding(), "");
    Target 3 behavior =
        new Target 4 ();
    behavior.HttpGetEnabled = Target 5 ;
    host.Description.Behaviors.Add(behavior);
    host.Open();
    ...
    host.Close();
}
```

Which code segments should you include in Target 1, Target 2, Target 3, Target 4 and Target 5 to build the service host? (To answer, drag the appropriate code segments to the correct targets in the answer area. Each code segment may be used once, more than once, or not at all. You may need to drag the split bar between panes or scroll to view content.)

Code Segments	Answer Area
<code>true</code>	Target 1: <input type="text" value="Code Segment"/>
<code>false</code>	Target 2: <input type="text" value="Code Segment"/>
<code>ServiceMetadataBehavior</code>	Target 3: <input type="text" value="Code Segment"/>
<code>ClientViaBehavior</code>	Target 4: <input type="text" value="Code Segment"/>
<code>ServiceHost</code>	Target 5: <input type="text" value="Code Segment"/>

Answer:

Explanation:

Target 1:	ServiceHost
Target 2:	ServiceHost
Target 3:	ServiceMetadataBehavior
Target 4:	ServiceMetadataBehavior
Target 5:	true

NEW QUESTION 202

You create a web application.

You deploy the application by using a Web Deploy Package.

You need to identify which setting will be created automatically in the SetParameters.xml file during the package generation.

Which three settings should you identify? Each correct answer presents part of the solution.

- A. the connection strings in the Web.config file
- B. the destination IIS web application path and name
- C. the service endpoints of the Web.config file
- D. the connection strings of any databases you add to the Package/Publish SQL tab on the Properties page of the project
- E. the application settings of the Web.config file

Answer: ABD

Explanation: References: <https://docs.microsoft.com/en-us/aspnet/web-forms/overview/deployment/web-deployment-in-the-enterprise/configuring-parameters-for-web-package-deployment>

NEW QUESTION 203

You have a Microsoft Visual Studio project named Project1 that is deployed as an Azure web app. The Azure web app uses an Azure SQL Database.

You plan to deploy updates to the Azure web app by using a Web Deploy Package.

The password for the Azure SQL Database was changed since you first published the Azure web app.

You need to deploy the package by using Windows PowerShell.

Which file should you modify before running the PowerShell deployment script?

- A. WebApiConfig.cs from the App_Start folder
- B. IdentityConfig.cs from the App_Start folder
- C. App.config from the Web Application folder
- D. Project1-waws-dev.json from the Configurations folder

Answer: A

NEW QUESTION 205

HOTSPOT

You have a Windows Communication Foundation (WCF) service named Service1.

You deploy the WCF service at the root level of a website in Azure. The address of the Azure website is <http://service1.azurewebsites.net/>.

You need to generate a .cs file that can be used to interact with Service1.

What command should you run? To answer, select the appropriate options in the answer area.

Answer Area

regasm.exe
sn.exe
svcutil.exe

http://service1.azurewebsites.net/
svc://service1.azurewebsites.net/
tcp://service1.azurewebsites.net/

service1.asmx
service1.svc
service1.wsdl

Answer:

Explanation: References: <https://stackoverflow.com/questions/23997821/how-to-generate-wcf-service-with-svcutil-exe>

NEW QUESTION 210

DRAG DROP

You have an application that uses an Entity Framework context. Lazy loading is disabled for the context. The application uses an Azure SQL Database named Students.

You need to retrieve the courses of a student who has an ID of 100. The solution must use lazy loading.

Which five code blocks should you use? Develop the solution by selecting and arranging the required code blocks in the correct order.

NOTE: You will not need all of the code blocks.

Code Blocks

Answer Area

```
context.Entry(student).Collection(s =>
s.Courses).Load();
```

```
Student student = students.Where(s =>
s.StudentID == 100).FirstOrDefault<Student>();
```

```
using (var context = new SchoolEntities())
{
```

```
IList<Student> Students =
context.Students.ToList<Student>();
```

```
foreach (var course in student.Courses)
Console.WriteLine(student.Course.Name);
}
```

```
IList<Student> students =
context.Students.Include
("Courses").ToList<Student>();
```

```
foreach (var course in student.Courses)
Console.WriteLine(course.CourseName);
}
```

```
context.Entry(student).Collection(s =>
s.Courses);
```



Answer:

Explanation: References: <http://www.entityframeworktutorial.net/Querying-with-EDM.aspx>

NEW QUESTION 211

You have a Web.config file that contains the following markup.


```
<?xml version="1.0"?>
<configuration>
  <appSettings>
    <add key="Key1" value="Value1" />
    <add key="Key2" value="Value2" />
    <add key="Key3" value="Value3" />
  </appSettings>
</configuration>
```

You need to use an XSLT transformation to remove the add tag for Key3. Which markup should you use?

- A. <add key="Key3" xdt:Transform="Remove" />
- B. <add key="Key3" xdt:Transform="Remove" xdt:Locator="Match(/configuration/appSettings/add[@key='Key3'])"/>
- C. <add xdt:Transform="Remove" />
- D. <add key="Key3" xdt:Transform="Remove" xdt:Locator="Match(key)" />

Answer: D

Explanation: References: [https://msdn.microsoft.com/en-us/library/dd465326\(v=vs.110\).aspx](https://msdn.microsoft.com/en-us/library/dd465326(v=vs.110).aspx)

NEW QUESTION 212

DRAG DROP

You are developing a .NET application that uses the HttpClient type to access an ASP.NET Web API application. You need to add a header to ensure that data is returned as XML. You have the following code:

```
HttpClient client = new HttpClient ();
Client.DefaultRequestHeaders.
    Add("Target 1", "Target 2");
```

Which segments should you include in Target 1 and Target 2 to complete the code? (To answer, drag the appropriate code segments to the correct targets in the answer area. Each code segment may be used once, more than once, or not at all. You may need to drag the split bar between panes or scroll to view content.)

Code Segments

- ContentType
- Accept
- AcceptEncoding
- application/xhtml+xml
- application/xml
- application/soap+xml

Answer Area

- Target 1: Code Segment
- Target 2: Code Segment

Answer:

Explanation: References: <http://codecaster.nl/blog/2015/11/webclient-httpwebrequest-httpclient-perform-web-requests-net/#headers>

NEW QUESTION 215

DRAG DROP

You are designing a service layer endpoint named EndPoint1 that will read more than one million rows from a database named DB1, and then update several rows in multiple tables in a database named DB2.

You need to identify a data access strategy that meets the following requirements:

?Uses the OData protocol to retrieve data from EndPoint1
 ?Creates a strongly typed object based on the table in BD2

?Retrieves data from DB1 as quickly as possible, while minimizing memory use on the application server

What should you identify for each requirement? To answer, drag the appropriate data access strategies to the correct requirements. Each data access strategy may be used once, more

than once, or not at all. You may need to drag the split bar between panes or scroll to view content.

Data Access Strategies		Answer area
ADO.NET Entity Framework		Uses the OData protocol to retrieve data from EndPoint1: Data access strategy
ADO.NET SqlDataAdapter		Creates a strongly typed object based on the table in DB2: Data access strategy
ADO.NET SqlDataReader		Retrieves data from DB1 as quickly as possible, while minimizing memory use on the application server: Data access strategy
NetTcpBinding binding		
WCF Data Services		

Answer:

Explanation: References:

<https://docs.microsoft.com/en-us/dotnet/framework/data/wcf/wcf-data-services-overview> <https://docs.microsoft.com/en-us/dotnet/framework/data/adonet/populating-a-dataset-from-a-dataadapter>

<https://docs.microsoft.com/en-us/dotnet/framework/data/adonet/retrieving-data-using-a-datareader>

NEW QUESTION 218

You have a web server that hosts several web applications.

From Microsoft Visual Studio, you create an assembly that is signed.

You need to make the assembly available to all of the web applications on the web server. The solution must minimize the number of copies of the assembly.

Which tool should you run?

- A. gacutil.exe
- B. sn.exe
- C. tlblmp.exe
- D. regasm.exe

Answer: B

Explanation: Strong Name Scenario

The following scenario outlines the process of signing an assembly with a strong name and later referencing it by that name.

Assembly A is created with a strong name using one of the following methods:

References: <https://docs.microsoft.com/en-us/dotnet/framework/app-domains/create-and-use-strong-named-assemblies>

NEW QUESTION 221

You are developing an ASP.NET Core web application by using an Entity Framework code-first approach. The application uses an Azure SQL Database. The code-first migration is configured to run as part of a continuous integration build.

You must add an Azure MySQL Database. This database must use the same schema as the existing Azure SQL Database instance.

You need to configure the migration to ensure that the existing TFS build definition remains unchanged.

What are two possible ways to achieve this goal? Each correct answer presents a complete solution.

NOTE: Each correct selection is worth one point.

- A. Use the ActiveProvider property to specify the provider to which the migration is applied.
- B. Create a new type that derives from DbContext and override the ActiveProvider objec
- C. Then, add or apply migrations using this type.
- D. Use the Entity Framework Core Fluent API to identify database providers.
- E. Create a separate Migration Assembly than the one containing the DbContext and switchthe active provider during build.

Answer: BC

Explanation: References:

https://medium.com/@rc_dos_santos/how-configure-asp-net-core-web-api-project-with-mysql-database-b7a64a247a99

NEW QUESTION 226

You deploy a RESTful ASP.NET Web API to manage order processing.

You are developing an Azure App Services Web App to consume the API and allow customers to order products. You use the HttpClient object to process order entries. The API throws SocketException errors when the Web App experiences a high volume of concurrent users.

You need to resolve the errors. What should you do?

- A. Implement a Using statement block when declaring the HttpClient object.
- B. Increase the value of the Timeout property when declaring the HttpClient object.
- C. Use the static modifier to declare the HttpClient object.
- D. Create a new HttpClient instance for each API request and use asynchronous method calls.

Answer: C

Explanation: If the class that wraps the external resource is shareable and thread-safe, create a shared singleton instance or a pool of reusable instances of the class.

The following example uses a static HttpClient instance, thus sharing the connection across all requests.

```
public class SingleHttpClientInstanceController : ApiController
{
    private static readonly HttpClient httpClient;
    static SingleHttpClientInstanceController()
    {
        httpClient = new HttpClient();
    }
    // This method uses the shared instance of HttpClient for every call to GetProductAsync.
    public async Task<Product> GetProductAsync(string id)
    {
        var hostName = HttpContext.Current.Request.Url.Host;
        var result = await httpClient.GetStringAsync(string.Format("http://{0}:8080/api/...", hostName));
        return new Product { Name = result };
    }
}
```

References: <https://docs.microsoft.com/en-us/azure/architecture/antipatterns/improper-instantiation/>

NEW QUESTION 231

DRAG DROP

You manage an ASP.NET Core E-Commerce application that is deployed to Azure App Service.

You plan to use Application Insights for collecting telemetry data.

You must prepare a report that describes utilization patterns of uses. The report must include the following information:

- ?the Country or Region from which users access the application
- ?how often and for how long users browse the catalog
- ?how many Canadian customers visited the offers page
- ?how much time Premium customers spend on the support page
- ?the percentage of users that added items to a shopping cart and completed purchases

You need to collect the required data.

Which tool should you use? To answer, drag the appropriate tools to the correct requirements. Each tool may be used once, more than once, or not at all. You may need to drag the split bar between panes or scroll to view content.

NOTE: Each correct selection is worth one point.

Tools	Answer Area
<div>Session</div> <div>Cohorts</div>	<div>Report section</div> <div>Application insights tool</div>
<div>Funnels</div> <div>Retention</div>	<div>Geography</div> <div>Tool</div>
<div>Trends</div> <div>Users</div>	<div>Feature usage</div> <div>Tool</div>
	<div>Canada offers</div> <div>Tool</div>
	<div>Premium support</div> <div>Tool</div>
	<div>Buyer behavior</div> <div>Tool</div>

Answer:

Explanation: Box 1 Geography: Users

"the Country or Region from which users access the application"

The Users panel allows you to understand important details about your users in a variety of ways. You can use this panel to understand such information as where your users are connecting from, details of their client, and what areas of your application they're accessing.

Box 2: Feature usage: Session

" how often and for how long users browse the catalog"

The Sessions panel is similar to the Users panel. Where Users helps you understand details about the users accessing your application, Sessions helps you

understand how those users used your application.

Box 3 Canada Offers: Cohorts

"how many Canadian customers visited the offers page"

A Cohort is a set of users grouped on similar characteristics. You can use cohorts to filter data in other panels allowing you to analyze particular groups of users. For example, you might want to analyze only users who completed a purchase, or users from Canada.

Box 4 Premium support: Cohorts

"how much time Premium customers spend on the support page"

A Cohort is a set of users grouped on similar characteristics. You can use cohorts to filter data in other panels allowing you to analyze particular groups of users. For example, you might want to analyze only users who completed a purchase, or users from Canada.

Box 5: Buyer behavior: Funnels

"the percentage of users that added items to a shopping cart and completed purchases" Funnels focus on what you want users to do. A funnel represents a set of steps in your

application and the percentage of users who move between steps. For example, you could create a funnel that measures the percentage of users who connect to your application who search product. You can then see the percentage of users who add that product to a shopping cart, and then the percentage of those who complete a purchase.

NEW QUESTION 233

Note: This question is part of a series of questions that present the same scenario. Each question in the series contains a unique solution that might meet the stated goals. Some question sets might have more than one correct solution, while others might not have a correct solution.

After you answer a question in this section, you will NOT be able to return to it. As a result, these questions will not appear in the review screen.

You are developing a RESTful API that uses ASP.NET Core. You plan to host the API in Azure App Services. You provision a development environment in the application service.

Developers must be able to deploy the API to the development environment. You must not share the Azure account credentials with developers.

You need to ensure that developers can deploy the API to the development environment.

Solution: Download the Publish profile for the application service and share it with the developers. Use Microsoft Visual Studio Publishing.

Does the solution meet the goal?

A. Yes

B. No

Answer: A

Explanation: To configure deployment for a web project in Visual Studio, you create one or more publish

profiles using the Publish Web wizard. A publish profile specifies the server you are deploying to, the credentials needed to log on to the server, the databases to deploy, and other deployment options. When you are ready to publish, you choose the profile you want to use and click the Publish button in the wizard or in the Web One Click Publish toolbar.

References: [https://msdn.microsoft.com/en-us/library/dd465337\(v=vs.110\).aspx](https://msdn.microsoft.com/en-us/library/dd465337(v=vs.110).aspx)

NEW QUESTION 234

Note: This question is part of a series of questions that present the same scenario. Each question in the series contains a unique solution that might meet the stated goals. Some question sets might have more than one correct solution, while others might not have a correct solution.

After you answer a question in this section, you will NOT be able to return to it. As a result, these questions will not appear in the review screen.

You have a web application in a Docker container image. You set the tag for the image as myapp. You plan to deploy the application to Azure Container Services.

You run the following commands. All commands complete successfully.

```
az acr create --resource-group myResourceGroup --name myRegistry --sku Basic
az acr login --name myRegistry
```

You need to ensure that the image can be run on an Azure Container Service cluster.

Solution: You run the following commands:

```
docker tag myapp myregistry.azurecr.io/samples/myapp
docker push myregistry.azurecr.io/samples/myapp
```

Does the solution meet the goal?

A. Yes

B. No

Answer: A

Explanation: First tag the image, and the push it into your private registry.

References: <https://medium.com/@pjbfg/azure-kubernetes-service-aks-pulling-private-container-images-from-azure-container-registry-acr-9c3e0a0a13f2>

NEW QUESTION 239

Note: This question is part of a series of questions that present the same scenario. Each question in the series contains a unique solution that might meet the stated goals. Some question sets might have more than one correct solution, while others might not have a correct solution.

After you answer a question in this section, you will NOT be able to return to it. As a result, these questions will not appear in the review screen.

You have developed a .NET Standard Library. You need to produce a NuGet package. Solution: Run the dotnet pack command Does the solution meet the goal?

A. Yes

B. No

Answer: B

Explanation: Package the component with the NuGet pack command.

References: <https://docs.microsoft.com/en-us/nuget/guides/create-net-standard-packages-vs2015>

NEW QUESTION 241

Note: This question is part of a series of questions that present the same scenario. Each question in the series contains a unique solution that might meet the stated goals. Some question sets might have more than one correct solution, while others might not have a correct solution.

After you answer a question in this section, you will NOT be able to return to it. As a result, these questions will not appear in the review screen.

You have developed a .NET Standard Library. You need to produce a NuGet package.

Solution: Run the msbuild command with the publish target specified. Does the solution meet the goal?

A. Yes

B. No

Answer: B

Explanation: Package the component with the NuGet pack command.

References: <https://docs.microsoft.com/en-us/nuget/guides/create-net-standard-packages-vs2015>

NEW QUESTION 245

Note: This question is part of a series of questions that present the same scenario. Each question in the series contains a unique solution that might meet the stated goals. Some question sets might have more than one correct solution, while others might not have a correct solution.

After you answer a question in this section, you will NOT be able to return to it. As a result, these questions will not appear in the review screen.

You develop a REST API that uses Node.js. The API will store data in Azure Cosmos DB. You plan to deploy the API to a new Azure App Services Web App. You create a new Web App by using the Azure portal.

The API must be deployed by using SFTP.

You need to provide the proper deployment credentials to deploy the API. Solution: Use your Azure Cosmos DB master key and resource token.

Does the solution meet the goal?

A. Yes

B. No

Answer: B

Explanation: Get FTP publishing profile and query for publish URL and credentials

References: <https://docs.microsoft.com/en-us/azure/app-service/scripts/app-service-cli-deploy-ftp>

NEW QUESTION 246

Note: This question is part of a series of questions that present the same scenario. Each question in the series contains a unique solution that might meet the stated goals. Some question sets might have more than one correct solution, while others might not have a correct solution.

After you answer a question in this section, you will NOT be able to return to it. As a result, these questions will not appear in the review screen.

You deploy an ASP.NET Core web application to Azure App Services. You are using Azure Event Hubs to collect the telemetry data for the application.

You need to configure Event Hubs to automatically deliver the telemetry data stream to a persistent data store.

Solution: Configure Event Hubs Capture to deliver data to Azure Blob storage. Does the solution meet the goal?

A. Yes

B. No

Answer: A

Explanation: Azure Event Hubs Capture enables you to automatically deliver the streaming data in Event Hubs to an Azure Blob storage or Azure Data Lake Store account of your choice, with the added flexibility of specifying a time or size interval.

References: <https://docs.microsoft.com/en-us/azure/event-hubs/event-hubs-capture-overview>

NEW QUESTION 250

Note: This question is part of a series of questions that present the same scenario. Each question in the series contains a unique solution that might meet the stated goals. Some question sets might have more than one correct solution, while others might not have a correct solution.

After you answer a question in this section, you will NOT be able to return to it. As a result, these questions will not appear in the review screen.

You deploy an ASP.NET Core web application to Azure App Services. You are using Azure Event Hubs to collect the telemetry data for the application.

You need to configure Event Hubs to automatically deliver the telemetry data stream to a persistent data store.

Solution: Configure Azure Event Hubs Capture to deliver data to Azure SQL Database. Does the solution meet the goal?

A. Yes

B. No

Answer: B

Explanation: Use Azure Blob storage to store the telemetry data.

References: <https://docs.microsoft.com/en-us/azure/event-hubs/event-hubs-capture-overview>

NEW QUESTION 252

You have a web application that was developed by using Microsoft ASP.NET MVC. The application is deployed to an Azure web app and uses an Azure SQL Database.

From a development environment, you use Microsoft Visual Studio to change the application code, and you modify the schema of the database. You need to deploy the changes to Azure. Which publishing method should you use?

- A. BACPAC
- B. FTP
- C. Msdeploy
- D. Robocopy

Answer: A

Explanation: You can deploy a .bacpac file to an Azure SQL Database using an Azure Resource Manager Template. .bacpac contains the schema and data necessary to deploy your database.

Note: A BACPAC file is a ZIP file with an extension of BACPAC containing the metadata and data from a SQL Server database. A BACPAC file can be stored in Azure blob storage or in local storage in an on-premises location and later imported back into Azure SQL Database or into a SQL Server on-premises installation. References: <https://docs.microsoft.com/en-us/azure/sql-database/sql-database-export>

NEW QUESTION 255

HOTSPOT

You plan to create several .NET applications that will read from Microsoft SQL Server 2014 databases by using Microsoft ADO.NET. The relevant requirements for the applications are described in the following table.

Application name	Requirement
App1	Will populate three lists from a SQL Server table. The returned lists must have a specific sort order.
App2	Will populate the data from a SQL Server table to a custom list of objects.
App3	Will bind to a GridView and will maintain data in view state. Users will modify the data by using the GridView.

Typically, the applications will read thousands of rows of data at a time.

You need to identify which object to use to retrieve data for each application. The solution must minimize the amount of memory used on the application server. What should you identify? To answer, select the appropriate options in the answer area.

Answer Area

App1:

▼

DataAdapter

DataReader

App2:

▼

DataAdapter

DataReader

App3:

▼

DataAdapter

DataReader

Answer:

Explanation: App1: DataReader App2: DataReader App3: DataAdapter

Need to use a DataAdapter since the data could be modified. Note:

You can use the ADO.NET DataReader to retrieve a read-only, forward-only stream of data from a database. Results are returned as the query executes, and are stored in the network buffer on the client until you request them using the Read method of the DataReader. Using the DataReader can increase application performance both by retrieving data as soon as it is available, and (by default) storing only one row at a time in memory, reducing system overhead.

A DataAdapter is used to retrieve data from a data source and populate tables within a DataSet. The DataAdapter also resolves changes made to the DataSet back to the data source. The DataAdapter uses the Connection object of the .NET Framework data provider to connect to a data source, and it uses Command objects to retrieve data from and resolve changes to the data source.

References: <https://docs.microsoft.com/en-us/dotnet/framework/data/adonet/dataadapters-and-datareaders>

NEW QUESTION 257

DRAG DROP

You are developing a Windows Communication Foundation (WCF) service named WCF1. WCF1 will use a certificate to secure the communication channel.

You need to ensure that the WCF service uses a certificate to secure the communication channel.

How should you complete the code? To answer, drag the appropriate code blocks to the correct locations. Each code block may be used once, more than once, or not at all. You may need to drag the split bar between panes or scroll to view content.

Code blocks

ClientCredentialType

GetType

MessageCredentialType.Certificate

MessageCredentialType.IssuedToken

MessageCredentialType.Windows

SetCertificate

• • • • •

Answer Area

```
WSHttpBinding aBinding = new WSHttpBinding();
aBinding.Security.Mode = SecurityMode.Message;

aBinding.Security.Message 

Code Block

 =



Code Block

 ;

EndpointAddress wcfEP = new EndpointAddress("http://wcf1");
WCFClient wcfClient = new WCFClient(aBinding, wcfEP);

wcfClient.ClientCredentials.ClientCertificate. 

Code block

 (
    StoreLocation.CurrentUser, StoreName.My, X509FindType.FindBySubjectName, "wcf1.com");
```

Answer:

Explanation: Target 1: ClientCredentialType

Target 2: MessageCredentialType.Certificate

Set the ClientCredential property to an appropriate value. The following code sets the property to Certificate.

WSHttpBinding b = new WSHttpBinding(); b.Security.Mode = SecurityMode.Message;

b.Security.Message.ClientCredentialType = MessageCredentialType.Certificate; Target 3: SetCertificate

On the client class, set the ClientCredentials property of the ClientBase<TChannel> class to an appropriate value.

Example: // Set the certificate for the client. cc.ClientCredentials.ClientCertificate.SetCertificate(StoreLocation.LocalMachine, StoreName.My, X509FindType.FindBySubjectName, "cohowinery.com");

References: <https://docs.microsoft.com/en-us/dotnet/framework/wcf/how-to-set-the-security-mode>

<https://docs.microsoft.com/en-us/dotnet/framework/wcf/how-to-specify-client-credential-values>

NEW QUESTION 260

HOTSPOT

You are creating a streamed Windows Communication Foundation (WCF) service. You implement the following service methods.

```
[ServiceContract]
public interface IEmployee
{
    [OperationContract]
    Stream EmployeeMethod1(string string1);

    [OperationContract]
    bool EmployeeMethod2(Message msg1);

    [OperationContract]
    IXmlSerializable EmployeeMethod3(Stream stream1, string string1);

    [OperationContract]
    int EmployeeMethod4(bool bool1, Message msg1);
}
```

For each of the following statements, select Yes if the statement is true. Otherwise, select No.

Answer Area

Statement	Yes	No
The input for EmployeeMethod3 is streamed.	<input type="radio"/>	<input type="radio"/>
The output for EmployeeMethod3 is streamed.	<input type="radio"/>	<input type="radio"/>
The input for EmployeeMethod4 is streamed.	<input type="radio"/>	<input type="radio"/>
The output for EmployeeMethod4 is streamed.	<input type="radio"/>	<input type="radio"/>

Answer:

Explanation: To enable streaming, define the OperationContract appropriately and enable streaming at the transport level. To stream data, the OperationContract for the service must satisfy two requirements:
References: <https://docs.microsoft.com/en-us/dotnet/framework/wcf/feature-details/how-to-enable-streaming>

NEW QUESTION 264

DRAG DROP

You have the following code.

```
String xmlString =
    @"C:\file.xml";
```

File.xml contains the following XML markup.

```
<?xml version='1.0'?>
<!-- This is a sample XML document -->
<Items>
    <Item>Item1</Item>
</Items> ;
```

You need to write code to display Item1 in the console output.

Which five code blocks should you use? Develop the solution by selecting and arranging the required code blocks in the correct order.

NOTE: You will need all of the code blocks.

Code Blocks

```
while (reader.Read())
{
using (XmlReader reader =
XmlReader.Create
(new StringReader(xmlString)))
{
while (!reader.Read())
{
using (XmlReader reader =
XmlReader.Create (xmlString))
{
}
}
Console.WriteLine(reader.Value);
if (reader.NodeType ==
XmlNodeType.Text)
```

Answer Area



Answer:

Explanation:

Answer Area

```
using (XmlReader reader =
XmlReader.Create (xmlString))
{
while (reader.Read())
{
if (reader.NodeType ==
XmlNodeType.Text)
Console.WriteLine(reader.Value);
}
}
```

NEW QUESTION 266

.....

THANKS FOR TRYING THE DEMO OF OUR PRODUCT

Visit Our Site to Purchase the Full Set of Actual 70-487 Exam Questions With Answers.

We Also Provide Practice Exam Software That Simulates Real Exam Environment And Has Many Self-Assessment Features. Order the 70-487 Product From:

<https://www.2passeasy.com/dumps/70-487/>

Money Back Guarantee

70-487 Practice Exam Features:

- * 70-487 Questions and Answers Updated Frequently
- * 70-487 Practice Questions Verified by Expert Senior Certified Staff
- * 70-487 Most Realistic Questions that Guarantee you a Pass on Your FirstTry
- * 70-487 Practice Test Questions in Multiple Choice Formats and Updatesfor 1 Year