

70-742 Dumps

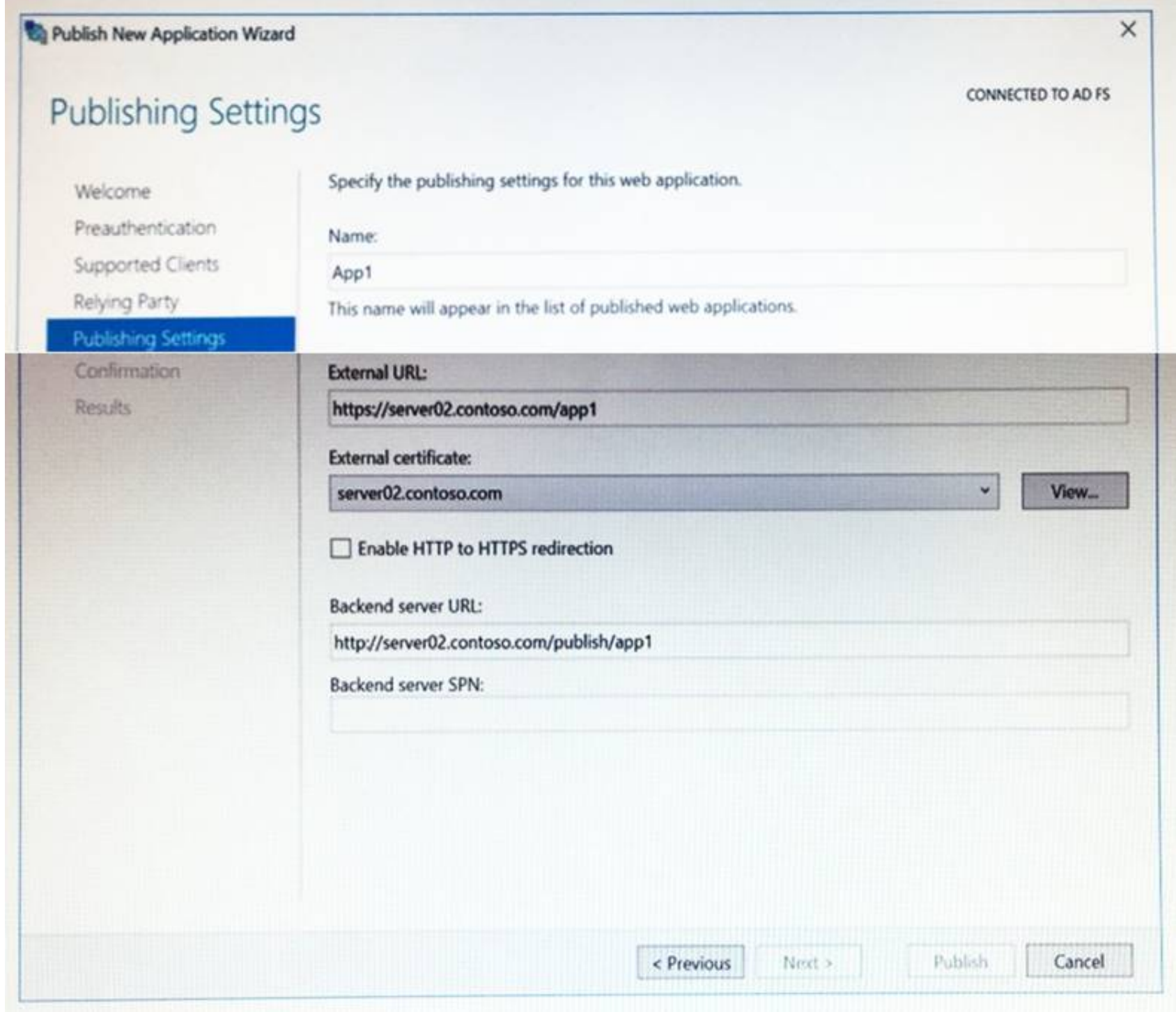
Identity with Windows Server 2016

<https://www.certleader.com/70-742-dumps.html>



NEW QUESTION 1

You have a server named Server1 that runs Windows Server 2016. Server1 has the Web Application Proxy role service installed. You are publishing an application named App1 that will use Integrated Windows authentication as shown in the following graphic.



Use the drop-down menus to select the answer area choice that completes each statement based on the information presented in the graphic.

Answer Area

Before you can complete the wizard, you must [answer choice]

▽

change the external certificate

configure the Backend server SPN

select Enable HTTP to HTTPS redirection

To ensure that users can access App1 externally, you must change the External URL to [answer choice]

▽

https://app1.contoso.com/app1

http://server02.contoso.com/app1

https://server02.contoso.com/publish/app1

Answer:

Explanation:

Answer Area

Before you can complete the wizard, you must
[answer choice]

▼
change the external certificate
configure the Backend server SPN
select Enable HTTP to HTTPS redirection

To ensure that users can access App1 externally,
you must change the External URL to [answer choice]

▼
https://app1.contoso.com/app1
http://server02.contoso.com/app1
https://server02.contoso.com/publish/app1

NEW QUESTION 2

A technician named Tech1 is assigned the task of joining the laptops to the domain. The computer accounts of each laptop must be in an organizational unit (OU) that is associated to the department of the user who will use that laptop. The laptop names must start with four characters indicating the department followed by a four-digit number

Tech1 is a member of the Domain Users group only. Tech1 has the administrator logon credentials for all the laptops.

You need Tech1 to join the laptops to the domain. The solution must ensure that the laptops are named correctly, and that the computer accounts of the laptops are in the correct OUs.

Solution: You pre-create the computer account of each laptop in Active Directory users and computers. You instruct Tech1 to sign in to each laptop, and then to run djoin.exe.

Does this meet the goal?

- A. Yes
- B. No

Answer: B

NEW QUESTION 3

Your network contains an Active Directory forest. The forest contains two domain controllers named DC1 and DC2 that run Windows Server 2016. DC1 holds all of the operations master roles.

DC1 experiences a hardware failure.

You plan to use an automated process that will create 1,000 user accounts. You need to ensure that the automated process can complete successfully.

Which command should you run? To answer, select the appropriate options in the answer area.

Answer Area

▼
Move-ADDirectoryServerOperationMasterRole
ntdsutil

-identity "DC2" -OperationMasterRole

▼
InfrastructureMaster
PDCEmulator
RIDMaster
SchemaMaster

▼
-Force
Seize pdc

Answer:

Explanation: Box 1: Move-ADDirectoryServerOperationMasterRole

Box 2: RIDMaster

Box 3: -Force

NEW QUESTION 4

Your network contains an Active Directory named contoso.com

You have three top-level organizational units (OUs) named OU1, OU2 and OU3. OU1 contains user accounts. OU2 contains the computer accounts for shared public computers. OU3 contains the computer accounts for laptops.

You have two Group Policy objects (GPOs) named GPO1 and GP02. GPO1 is linked to OU1. GP02 is linked to OU2.

You need to prevent the user settings in GPO1 from being applied when a user signs in to a shared public computer. If a user signs in to a laptop, the user settings in GPO1 must be applied.

What should you configure?

- A. inheritance blocking
- B. Security Filtering
- C. loopback processing
- D. GPO link enforcement

Answer: C

NEW QUESTION 5

Note: This question is part of a series of questions that use the same scenario. For your convenience, the scenario is repeated in each question. Each question presents a different goal and answer choices, but the text of the scenario is exactly the same in each question in this series.

Start of repeated Scenario:

You work for a company named Contoso, Ltd.

The network contains an Active Directory forest named contoso.com. A forest trust exists between contoso.com and an Active Directory forest named adatum.com.

The contoso.com forest contains the objects configured as shown in the following table. Scenario:

Refer to following table:

Object name	Object type	Group scope	Group type
User1	User	Not applicable	Not applicable
User2	User	Not applicable	Not applicable
Computer1	Computer	Not applicable	Not applicable
Group1	Group	Domain local	Security
Group2	Group	Domain local	Security
Group3	Group	Universal	Security
Group4	Group	Global	Security
Group5	Group	Universal	Security

Group1 and Group 2 contain only user accounts.

Contoso hires a new remote user named User3. User3 will work from home and will use a computer named Computed that runs Windows 10. Computed is currently in a workgroup.

An administrator named Admin1 is a member of the Domain Admins group in the contoso.com domain. From Active Directory Users and Computers, you create an organizational unit (OU) named OU1 in the

contoso.com domain, and then you create a contact named Contact1 in OU1,

An administrator of the adatum.com domain runs the Set-ADUser cmdlet to configure a user named User1 to have a user logon name of User1@litwareinc.com.

End of Scenario:

Admin1 attempts to delete OU1 and receives an error message. You need to ensure that Admin1 can delete OU1. What should you do first?

- A. Delete Contact1.
- B. Add Admin1 to the Enterprise Admins group.
- C. Modify the Object settings for OU1.
- D. Disable the Active Directory Recycle Bin.

Answer: C

NEW QUESTION 6

Note: This question is part of a series of questions that use the same or similar answer choices. An answer choice may be correct for more than one question in the series. Each question is independent of the other questions in this series.

Information and details provided in a question apply only to that question.

Your network contains an Active Directory domain named contoso.com. The domain contains 5,000 user accounts.

You have a Group Policy object (GPO) named DomainPolicy that is linked to the domain and a GPO named DCPolicy that is linked to the Domain Controllers organizational unit (OU).

You need to ensure that all of the client computers on the network automatically download and install Windows updates.

What should you do?

- A. From the Computer Configuration node of DCPolicy, modify Security Settings.
- B. From the Computer Configuration node of DomainPolicy, modify Security Settings.
- C. From the Computer Configuration node of DomainPolicy, modify Administrative Templates.
- D. From the User Configuration node of DCPolicy, modify Security Settings.
- E. From the User Configuration node of DomainPolicy, modify Folder Redirection.
- F. From user Configuration node of DomainPolicy, modify Administrative Templates.
- G. From Preferences in the User Configuration node of DomainPolicy, modify Windows Settings.
- H. From Preferences in the Computer Configuration node of DomainPolicy, modify Windows Settings.

Answer: F

NEW QUESTION 7

Your network contains an Active Directory domain named contoso.com.

All the accounts of the users in the sales department are in an organizational unit (OU) named SalesOU. An application named App1 is deployed to the user accounts in SalesOU by using a Group Policy object

(GPO) named SalesGPO. You need to set the registry value of

\HKEY_CURRENT_USER\Software\App1\Collaboration to 0.

Solution: You add a user preference that has an Update action. Does this meet the goal?

- A. Yes
- B. No

Answer: A

NEW QUESTION 8

Note: This question is part of a series of questions that present the same scenario. Each question in the series contains a unique solution that might meet the stated goals. Some question sets might have more than one correct solution, while others might not have a correct solution.

After you answer a question in this section, you will NOT be able to return to it. As a result, these questions will not appear in the review screen.

Your network contains an Active Directory domain named contoso.com. The domain contains a server named Server1 that runs Windows Server 2016. The computer account for Server1 is in organizational unit (OU) named OU1.

You create a Group Policy object (GPO) named GPO1 and link GPO1 to OU1.

You need to add a domain user named User1 to the local Administrators group on Server1.

Solution: From the Computer Configuration node of GPO1, you configure the Account Policies settings. Does this meet the goal?

- A. Yes
- B. No

Answer: B

NEW QUESTION 9

Your network contains an Active Directory domain named contoso.com.

The user account for a user named User1 is in an organizational unit (OU) named OU1. You need to enable User1 to sign in as user1@adatum.com.

Solution: From Active Directory Domains and Trusts, you configure an alternative UPN suffix, From Active Directory Administrative Center, you configure the User UPN logon property of User1.

Does this meet the goal?

- A. Yes
- B. No

Answer: A

NEW QUESTION 10

Note: This question is part of a series of questions that present the same scenario. Each question in the series contains a unique solution that might meet the stated goals. Some question sets might have more than one correct solution, while others might not have a correct solution.

After you answer a question in this section, you will NOT be able to return to it. As a result, these questions will not appear in the review screen.

You deploy a new Active Directory forest.

You need to ensure that you can create a group Managed Service Account (gMSA) for multiple member servers.

Solution: You configure Kerberos constrained delegation on the computer account of each member server. Does this meet the goal?

- A. Yes
- B. No

Answer: B

NEW QUESTION 10

Your company has multiple branch offices.

The network contains an Active Directory domain named contoso.com.

In one of the branch offices, a new technician is hired to add computers to the domain.

After successfully joining multiple computers to the domain, the technician fails to join anymore computers to the domain.

You need to ensure that the technician can join an unlimited number of computers to the domain. What should you do?

- A. Modify the Security settings of the technician's user account.
- B. Modify the Security settings of the Computers container.
- C. Configure the technician's user account as a managed service account.
- D. Run the redircmp.exe command.

Answer: B

NEW QUESTION 15

You network contains an Active Directory domain named contoso.com. The domain contains an enterprise certification authority (CA) named CA1.

You have a test environment that is isolated physically from the corporate network and the Internet.

You deploy a web server to the test environment. On CA1, you duplicate the Web Server template, and you name the template Web_Cert_Test.

For the web server, you need to request a certificate that does not contain the revocation information of CA1. What should you do first?

- A. From the properties of CA1, allow certificates to be published to the file system.
- B. From the properties of CA1, select Restrict enrollment agents, and then add Web_Cert_Test to the restricted enrollment agent.

- C. From the properties of Web_Cert_Test, assign the Enroll permission to the guest account.
D. From the properties of Web_Cert_Test, set the Compatibility setting of CA1 to Windows Server 2016.

Answer: D

NEW QUESTION 16

Your network contains an Active Directory domain named contoso.com. The relevant objects in the domain are configured as shown in the following table.

Object name	Type
Server1	Member server
OU1	Organizational unit (OU)
OU2	Organizational unit (OU)
GPO1	Group Policy object (GPO)
User1	User account
User2	User account
Group1	Global group
Group2	Global group
Group3	Global group

You have the following configurations:

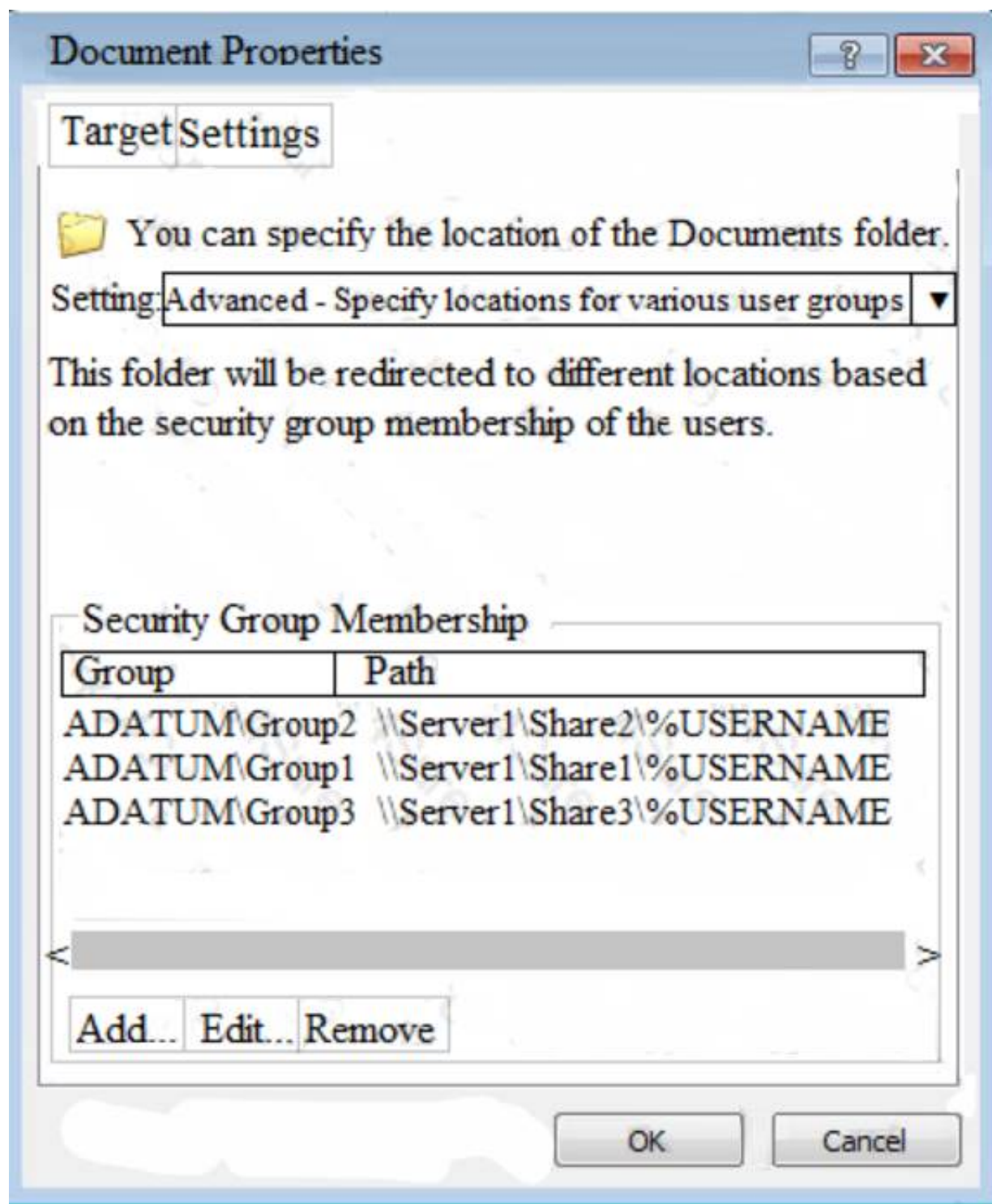
User1 is in OU1 and is a member of Group1 and Group2

User2 is in OU2 and is a member of Group1 and Group3

GPO1 is linked to OU1.

Server1 has three shares named Share1, Share2, and Share3. The Domain Users group permissions to all three shares.

GPO1 is configured as shown in the exhibit. (Click the Exhibit button.)



For each of the following statements, select Yes if the statement is true. Otherwise, select No. NOTE: Each correct selection is worth one point.

Answer Area

Statements	Yes	No
When User1 signs in to Server1, the user's Documents folder will be redirected to \\Server1\Share1.	<input type="radio"/>	<input type="radio"/>
If you add User1 to Group3, and then User1 signs in to Server1, the user's Documents folder will be redirected to \\Server1\Share3.	<input type="radio"/>	<input type="radio"/>
When User2 signs in to Server1, the user's Documents folder will be redirected to \\Server1\Share1	<input type="radio"/>	<input type="radio"/>

Answer:

Explanation:

Answer Area

Statements	Yes	No
When User1 signs in to Server1, the user's Documents folder will be redirected to \\Server1\Share1.	<input checked="" type="radio"/>	<input type="radio"/>
If you add User1 to Group3, and then User1 signs in to Server1, the user's Documents folder will be redirected to \\Server1\Share3.	<input checked="" type="radio"/>	<input type="radio"/>
When User2 signs in to Server1, the user's Documents folder will be redirected to \\Server1\Share1	<input checked="" type="radio"/>	<input type="radio"/>

NEW QUESTION 18

Note: This question is part of a series of questions that use the same or similar answer choices. An answer choice may be correct for more than one question in the series. Each question is independent of the other questions in this series. Information and details provided in a question apply only to that question.

Your network contains an Active Directory domain named contoso.com.

You need to limit the number of Active Directory Domain Services (AD DS) objects that a user can create in the domain.

Which tool should you use?

- A. Dsadd quota
- B. Dsmod
- C. Active Directory Administrative Center
- D. Dscls
- E. Dsomain
- F. Active Directory Users and Computers
- G. Ntdsutil
- H. Group Policy Management Console

Answer: A

NEW QUESTION 23

Your network contains an Active Directory domain named contoso.com. The domain contains a username User1, a group named Group1, and an organizational unit (OU) named OU1.

You need to enable User1 to link Group Policies to OU1.

Solution: From Active Directory Administrative Center, you add User1 to Group1. From ADSI Edit, you grant Group1 Full Control permissions to the "CN=Policies, CN=System, DC=Contoso, DC=com" object.

Does this meet the goal?

- A. Yes
- B. NO

Answer: B

NEW QUESTION 25

Your network contains an Active Directory forest named contoso.com. The forest contains three domains named contoso.com, corp.contoso.com, and ext.contoso.com. The forest contains three Active Directory sites named Site1, Site2, and Site3.

You have the three administrators as described in the following table.

Administrator name	Group membership	Domain
Admin1	Domain Admins	Contoso.com
Admin2	Domain Admins	Corp.contoso.com
Admin3	Enterprise Admins	Contoso.com

You create a Group Policy object (GPO) named GPO1.

Which administrator or administrators can link GPO1 to Site2?

- A. Admin1 and Admin2 only
- B. Admin1, Admin2, and Admin3
- C. Admin3 only
- D. Admin1 and Admin3 only

Answer: D

Explanation: References:

[https://technet.microsoft.com/en-us/library/cc732979\(v=ws.11\).aspx](https://technet.microsoft.com/en-us/library/cc732979(v=ws.11).aspx)

NEW QUESTION 26

Note: This question is part of a series of questions that use the same or similar answer choices. An answer choice may be correct for more than one question in the series. Each question is independent of the other questions in this series. Information and details provided in a question apply only to that question.

Your network contains an Active Directory forest named contoso.com. The forest functional level is Windows Server 2012 R2.

You need to ensure that a domain administrator can recover a deleted Active Directory object quickly. Which tool should you use?

- A. Dsadd quota
- B. Dsmmod
- C. Active Directory Administrative Center
- D. Dsacsls
- E. Dsamain
- F. Active Directory Users and Computers
- G. Ntdsutil
- H. Group Policy Management Console

Answer: C

NEW QUESTION 29

Your company recently deployed a new child domain to an Active Directory forest.

You discover that a user modified the Default Domain Policy to configure several Windows components in the child domain.

A company policy states that the Default Domain Policy must be used only to configure domain-wide security settings.

You create a new Group Policy object (GPO) and configure the settings for the Windows components in the new GPO.

You need to restore the Default Domain Policy to the default settings from when the domain was first installed.

What should you do?

- A. From Group Policy Management, click Starter GPOs, and then click Manage Backups.
- B. From a command prompt, run the dcpofix.exe command.
- C. From Windows PowerShell, run the Copy-GPO cmdlet.
- D. Run ntdsutil.exe to perform a metadata cleanup and a semantic database analysis.

Answer: B

NEW QUESTION 32

Your company has an office in Montreal.

The network contains an Active Directory domain named conloso.com.

You have an organizational unit (OU) named Montreal that contains all of the users accounts for the users in the Montreal office. An office manager in the Montreal office knows each user personally.

You need to ensure that the office manager can provide the users with a new password if the users forget their password.

What should you do?

- A. Create a Group Policy object (GPO) and link the GPO to the Montreal O
- B. Assign the office manager the Apply Group Policy permission on the GP
- C. Configure the Password Policy settings on the GPO.
- D. From the Security settings of the Montreal OU, assign the office manager the Reset Password permission.
- E. From the Security settings of each user account in the Montreal OU, assign the office manager the Change Password permission.
- F. Create a Group Policy object (GPO) and link the GPO to the OU of the domai
- G. Filter the GPO to the Montreal user
- H. Assign the office manager the Apply Group Policy permission on the GP
- I. Configure the Password Policy settings of the GPO.

Answer: A

NEW QUESTION 35

Your network contains an Active Directory forest. The forest contains a domain named contoso.com. The domain contains three domain controllers.

A domain controller named lon-dc1 fails. You are unable to repair lon-dc1.

You need to prevent the other domain controllers from attempting to replicate to lon-dc1.

Solution: From Active Directory Domains and Trusts, you transfer the operations master roles from lon-dc1. Does this meet the goal?

- A. Yes
- B. No

Answer: B

NEW QUESTION 38

Note: This question is part of a series of questions that present the same scenario. Each question in the series contains a unique solution that might meet the stated goals. Some question sets might have more than one correct solution, while others might not have a correct solution.

After you answer a question in this section, you will NOT be able to return to it. As a result, these questions will not appear in the review screen.

You deploy a new Active Directory forest.

You need to ensure that you can create a group Managed Service Account (gMSA) for multiple member servers.

Solution: From Windows PowerShell on a domain controller, you run the Set-KdsConfiguration cmdlet. Does this meet the goal?

- A. Yes
- B. No

Answer: B

NEW QUESTION 39

Note: This question is part of a series of questions that present the same scenario. Each question in the series contains a unique solution that might meet the

stated goals. Some question sets might have more than one correct solution, while others might not have a correct solution. After you answer a question in this section, you will NOT be able to return to it. As a result, these questions will not appear in the review screen. Your network contains an Active Directory domain named contoso.com. The domain contains a server named Server1 that runs Windows Server 2016. The Computer account for Server1 is in organizational unit (OU) named OU1. You create a Group Policy object (GPO) named GPO1 and link GPO1 to OU1. You need to add a domain user named user1 to the local Administrators group on Server1. Solution: From the Computer Configuration node of GPO1, you configure the local Users and Groups preference. Does this meet the goal?

- A. Yes
- B. No

Answer: A

NEW QUESTION 43

Your network contains an Active Directory forest named contoso.com. The forest contains 10 domains. The root domain contains a global catalog server named DC1. You remove the global catalog server role from DC1. You need to decrease the size of the Active Directory database on DC1. Solution: You restart DC1 in Directory Services Repair Mode. You run compact.exe, and then restart DC1. Does this meet the goal?

- A. Yes
- B. No

Answer: B

Explanation: You need to run ntdsutil.exe with the 'compact to' option. References: <https://theitbros.com/active-directory-database-compact-defrag/>

NEW QUESTION 47

Your company has multiple offices. The network contains an Active Directory domain named contoso.com. An Active Directory site exists for each office. All of the sites connect to each other by using DEFAULTIPSITELINK. The company plans to open a new office. The new office will have a domain controller and 100 client computers. You install Windows Server 2016 on a member server in the new office. The new server will become a domain controller. You need to deploy the domain controller to the new office. The solution must ensure that the client computers in the new office will authenticate by using the local domain controller. Which three actions should you perform next in sequence? To answer, move the appropriate actions from the list of actions to the answer area and arrange them in the correct order.

Actions

Answer Area

Create a new site object.

Create a new connection object.

Promote the member server to a domain controller.

Create a new subnet object.

Move the server object of the domain controller.

Answer:

Explanation:

Actions	Answer Area
Create a new site object.	Create a new site object.
Create a new connection object.	Create a new subnet object.
Promote the member server to a domain controller.	Promote the member server to a domain controller.
Create a new subnet object.	
Move the server object of the domain controller.	

NEW QUESTION 48

Your network contains an Active Directory domain named contoso.com.

You create a domain security group named Group1 and add several users to it.

You need to force all of the users in Group1 to change their password every 35 days. The solution must affect the Group1 users only.

What should you do?

- A. From Windows PowerShell, run the Set-ADDomain cmdlet, and then run the Set-ADAccountPassword cmdlet.
- B. Modify the Password Policy settings in a Group Policy object (GPO) that is linked to the domain, and then filter the GPO to Group1 only.
- C. Create a forms authentication provider, and then set the forms authentication credentials.
- D. From Active Directory Administrative Center, create a Password Setting object (PSO).

Answer: D

NEW QUESTION 52

Your network contains an Active Directory domain named contoso.com. The domain contains a web application that uses Kerberos authentication.

You change the domain name of the web application.

You need to ensure that the service principal name (SPN) for the application is registered. Which tool should you use?

- A. Repladmin
- B. Setspn
- C. Netsh
- D. Pdsprnf

Answer: B

Explanation: <https://social.technet.microsoft.com/wiki/contents/articles/18996.active-directory-powershell-script-to-list-all-sp>

NEW QUESTION 56

Note: This question is part of a series of questions that present the same scenario. Each question in the series contains a unique solution that might meet the stated goals. Some question sets might have more than one correct solution, while others might not have a correct solution.

After you answer a question in this section, you will NOT be able to return to it. As a result, these questions will not appear in the review screen.

Your network contains an Active Directory domain named contoso.com. The domain contains a server named Server1 that runs Windows Server 2016. The computer account for Server1 is in organizational unit (OU) named OU1.

You create a Group Policy object (GPO) named GPO1 and link GPO1 to OU1.

You need to add a domain user named User1 to the local Administrators group on Server1.

Solution: From the Computer Configuration node of GPO1, you configure the Local Users and Groups preference.

Does this meet the goal?

- A. Yes
- B. No

Answer: A

NEW QUESTION 59

Your network contains an Active Directory domain named contoso.com.

You have a Group Policy object (GPO) named GPO1. GPO1 is linked to an organizational unit (OU) named OU1.

GPO1 contains several corporate desktop restrictions that apply to all computers. You plan to deploy a printer to the computers in OU1.

You need to ensure that any user who signs in to a computer that runs Windows 10 in OU1 receives the new printer. All of the computers in OU1 must continue to apply the corporate desktop restrictions from GPO1.

What should you configure?

- A. a user preference and a WMI filter on GPO1.
- B. a computer preference that uses item-level targeting
- C. a computer preference and WMI filter on GPO1
- D. a user preference that uses item-level targeting

Answer: D

NEW QUESTION 61

Your network contains an Active Directory forest named contoso.com. The forest contains an enterprise root certification authority (CA) on a server that runs Windows Server 2016.

You plan to create and issue a custom subordinate CA template.

You need to prevent subordinate CAs from issuing subordinate certificates. What should you configure in the template?

- A. the Request Handling settings
- B. the Cryptography settings
- C. the Basic Constraints extension
- D. the Security settings

Answer: D

NEW QUESTION 63

Your network contains an Active Directory domain named adatum.com. The domain contains a security group named G_Research and an organizational unit (OU) named OU_Research.

All the users in the research department are members of G_Research and their user accounts are in OU_Research.

You need to ensure that all the research department users change their password every 28 days and enforce a complex password that is 12 characters long. What should you do?

- A. From a Group Policy Management, create and link a Group Policy object (GPO) to OU_Research. Modify the password policy in the GPO.
- B. From a Group Policy Management, create and link a Group Policy object (GPO) to the domain.
- C. Modify the password policy in the GP.
- D. Filter the GPO to apply to G_Research only.
- E. From Active Directory Users and Computers, modify the properties of the Password Settings Container.
- F. From Active Directory Administrative Center, create a new Password Settings object (PSO).

Answer: D

NEW QUESTION 68

Note: This question is part of a series of questions that use the same scenario. For your convenience, the scenario is repeated in each question. Each question presents a different goal and answer choices, but the text of the scenario is exactly the same in each question in this series.

Start of repeated scenario.

You work for a company named Contoso, Ltd.

The network contains an Active Directory forest named contoso.com. A forest trust exists between contoso.com and an Active Directory forest named adatum.com.

The contoso.com forest contains the objects configured as shown in the following table.

Object name	Object type	Group scope	Group type
User1	User	<i>Not applicable</i>	<i>Not applicable</i>
User2	User	<i>Not applicable</i>	<i>Not applicable</i>
Computer1	Computer	<i>Not applicable</i>	<i>Not applicable</i>
Group1	Group	Domain local	Security
Group2	Group	Domain local	Security
Group3	Group	Universal	Security
Group4	Group	Global	Security
Group5	Group	Universal	Security

Group1 and Group2 contain only user accounts.

Contoso hires a new remote user named User3. User3 will work from home and will use a computer named Computer3 that runs Windows 10. Computer3 is currently in a workgroup.

An administrator named Admin1 is a member of the Domain Admins group in the contoso.com domain. From Active Directory Users and Computers, you create an organizational unit (OU) named OU1 in the contoso.com domain, and then you create a contact named Contact1 in OU1.

An administrator of the adatum.com domain runs the Set-ADUser cmdlet to configure a user named User1 to have a user logon name of User1@litwareinc.com. End of repeated scenario.

You need to join Computer3 to the contoso.com domain by using offline domain join.

Which command should you use in the contoso.com domain and on Computer3? To answer, select the appropriate options in the answer area.

Answer Area

The contoso.com domain:

▼
Add-Computer with the-DomainName parameter
Djoin.exe with the /provision parameter
Djoin.exe with the /requestodj parameter
Net computer with the /add parameter
Netdom.exe with the join parameter

Computer3:

▼
Add-Computer with the-DomainName parameter
Djoin.exe with the /provision parameter
Djoin.exe with the /requestodj parameter
Net computer with the /add parameter
Netdom.exe with the join parameter

Answer:

Explanation:

Answer Area

The contoso.com domain:

▼
Add-Computer with the-DomainName parameter
Djoin.exe with the /provision parameter
Djoin.exe with the /requestodj parameter
Net computer with the /add parameter
Netdom.exe with the join parameter

Computer3:

▼
Add-Computer with the-DomainName parameter
Djoin.exe with the /provision parameter
Djoin.exe with the /requestodj parameter
Net computer with the /add parameter
Netdom.exe with the join parameter

NEW QUESTION 70

Note: This question is part of a series of questions that present the same scenario. Each question in the series contains a unique solution that might meet the stated goals. Some question sets might have more than one correct solution, while others might not have a correct solution.

After you answer a question in this section, you will NOT be able to return to it. As a result, these questions will not appear in the review screen.

Your network contains an Active Directory domain named contoso.com. A user named User1 is in an organizational unit (OU) named OU1.

You are troubleshooting a folder access issue for User1.

You need a list of groups to which User1 is either a direct member or an indirect member. Solution: You run Get-ADGroup -Identity User1 -Property MemberOf.

Does this meet the goal?

- A. Yes
B. No

Answer: B

Explanation: The Get-ADGroup cmdlet does not include the MemberOf property. The command above is, therefore, not valid.

References:

<https://docs.microsoft.com/en-us/powershell/module/addsadministration/get-adgroup?view=win10-ps>

NEW QUESTION 73

Your network contains an Active Directory domain. The domain contains an Active Directory Rights Management Services (AD RMS) cluster and a certification authority (CA).

You need to ensure that all the documents that are protected by using AD RMS can be decrypted if the account used to encrypt the documents is deleted.

What should you do?

- A. Back up the AD RMS-protected files by using Windows Server Backup.
B. Configure key archival on the CA.
C. Manually configure the AD RMS cluster key password.
D. Configure super users in the AD RMS deployment.

Answer: D

Explanation: <https://social.technet.microsoft.com/wiki/contents/articles/9111-disaster-recovery-guide-for-active-directory-righ>

NEW QUESTION 74

Your network contains an Active Directory domain named contoso.com. The domain contains three servers named Server1, Server2, and Server3 that run Windows Server 2016.

Server1 has IP Address Management (IPAM) installed. Server2 and Server3 have the DHCP Server role installed and have several DHCP scopes configured. The IPAM server retrieves data from Server2 and Server3.

A domain user named User1 is a member of the groups shown in the following table.

Server name	Group
Server2	DHCP Administrators
Server3	DHCP Users

On Server1, you create a security policy for User1. The policy grants the IPAM DHCP Scope Administrator Role with the \Global access scope to the user. Which actions can User1 perform? To answer, select the appropriate options in the answer area.

Answer Area

From Server Manager on Server1, User1 can modify the description of the DHCP scopes:

▼

On Server2 only

On Server3 only

On both Server2 and Server3

From Server Manager on Server1, User1 can create a new DHCP scope:

▼

On Server2 only

On Server3 only

On both Server2 and Server3

Answer:

Explanation: User1 is using Server Manager, not IPAM to perform the administration. Therefore, only the “DHCP Administrators” permission on Server2 and the “DHCP Users” permissions on Server3 are applied.

The permissions granted through membership of the “IPAM DHCP Scope Administrator Role” are not applied when the user is not using the IPAM console.

NEW QUESTION 77

Your network contains an Active Directory domain named contoso.com. The domain contains a server named Server1 that runs Windows Server 2016.

On Server1, you create a local user named User1. User1 is a member of the local Administrators group. Server1 has the following local Group Policies: K

- Local Computer Policy
- Local Computer\User1Policy

• Local Computer\Administrators Policy
You need to force User1 to change his password every 14 days.
Solution: You configure the Password Policy settings in a Group Policy object (GPO) that is linked to the Domain Controllers organizational unit (OU).

A. Yes
B. No

Answer: B

NEW QUESTION 82

Your network contains an Active Directory domain named contoso.com. The domain contains a member server named Server1 that runs Windows Server 2016.
Server1 has IP Address Management (IPAM) installed. IPAM uses a Windows Internal Database. You install Microsoft SQL Server on Server1.
You plan to move the IPAM database to SQL Server.
You need to create a SQL Server login for the IPAM service account.
For which user should you create the login? To answer, select the appropriate options in the answer area.

Answer Area

CONTOSO\
NT AUTHORITY\
NT SERVICE
SERVER1\

LOCAL SERVICE
LOCAL SYSTEM
NETWORK SERVICE

Answer:

Explanation: References:
<https://blogs.technet.microsoft.com/yagmurs/2014/07/31/moving-ipam-database-from-windows-internal-databas>

NEW QUESTION 86

Your network contains an Active Directory domain named contoso.com. The domain contains a domain controller named DC1.
You create and link a Group Policy object (GPO) named SalesAppGPO to an organizational unit (OU) named SalesOU. All the computer accounts are in the Computers container. All the user accounts of the users in the sales department are in SalesOU.
You have a line-of-business application named SalesApp that is installed by using a Windows Installer package.
You need to make SalesApp available to only the sales department users.
Which three actions should you perform in sequence? To answer move the appropriate actions from the list of actions to the answer area and arrange them in the correct order.

Actions

On DC1, create a WebDAV folder named SalesApp.

Copy the Windows Installer package to SalesApp.

In GPO1, add a package to Computer Configuration\Policies\Software Settings\Software installation.

On DC1, create a shared folder named SalesApp.

In GPO1, add a package to User Configuration\Policies\Software Settings\Software installation.

In GPO1, create a software restriction policy in Computer Configuration\Policies\Windows Settings\Security Settings.

In GPO1, create a software restriction policy in User Configuration\Policies\Windows Settings\Security Settings.

Answer Area

➤

➤

Answer:

Explanation:

Actions	Answer Area
On DC1, create a WebDAV folder named SalesApp.	On DC1, create a shared folder named SalesApp.
Copy the Windows Installer package to SalesApp.	Copy the Windows Installer package to SalesApp.
In GPO1, add a package to Computer Configuration\Policies\Software Settings\Software installation.	In GPO1, add a package to Computer Configuration\Policies\Software Settings\Software installation.
On DC1, create a shared folder named SalesApp.	
In GPO1, add a package to User Configuration\Policies\Software Settings\Software installation.	
In GPO1, create a software restriction policy in Computer Configuration\Polices\Windows Settings\Security Settings.	
In GPO1, create a software restriction policy in User Configuration\Policies\Windows Settings\Security Settings.	

NEW QUESTION 88

Your network contains an Active directory domain named conloso.com. The domain has an enterprise certification authority (CA).

You duplicate the Basic EFS template, and you name the template Template1. You configure the CA to issue Template1.

Users are configured to obtain a new certificate automatically when they sign in to a computer in the domain. You need to enable the users to automatically obtain a certificate based on Template1.

What should you modify?

- A. the Security settings for Template1
- B. the Request Handling properties for the CA
- C. the Publication Settings for the CA
- D. the Request Handling properties for Template1

Answer: A

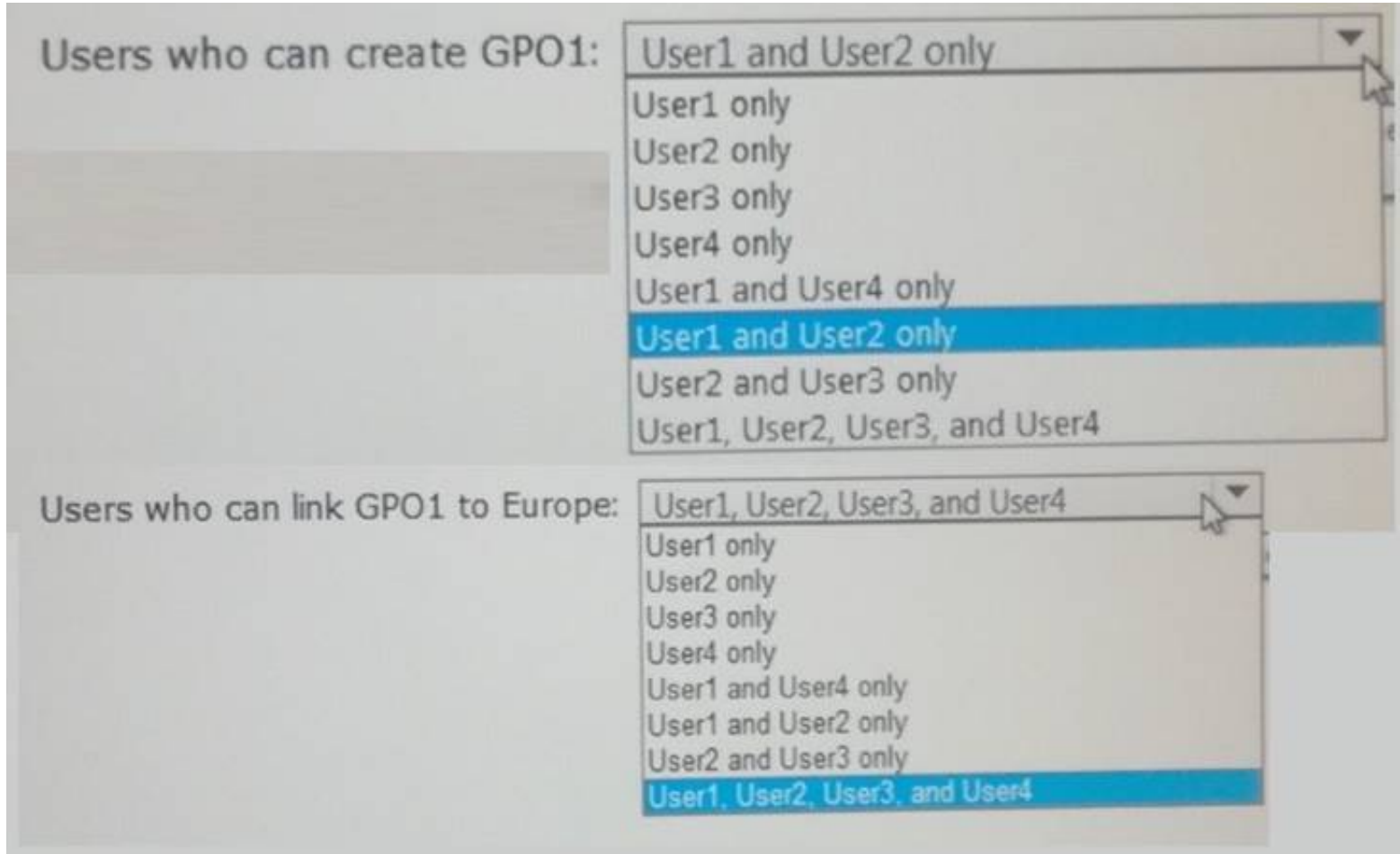
NEW QUESTION 90

Your network contains two network domains sales.fabrikam.com, and contoso.com, You recently added a site named Europe.

The forest contains four users who are members of the groups shown in the following table.

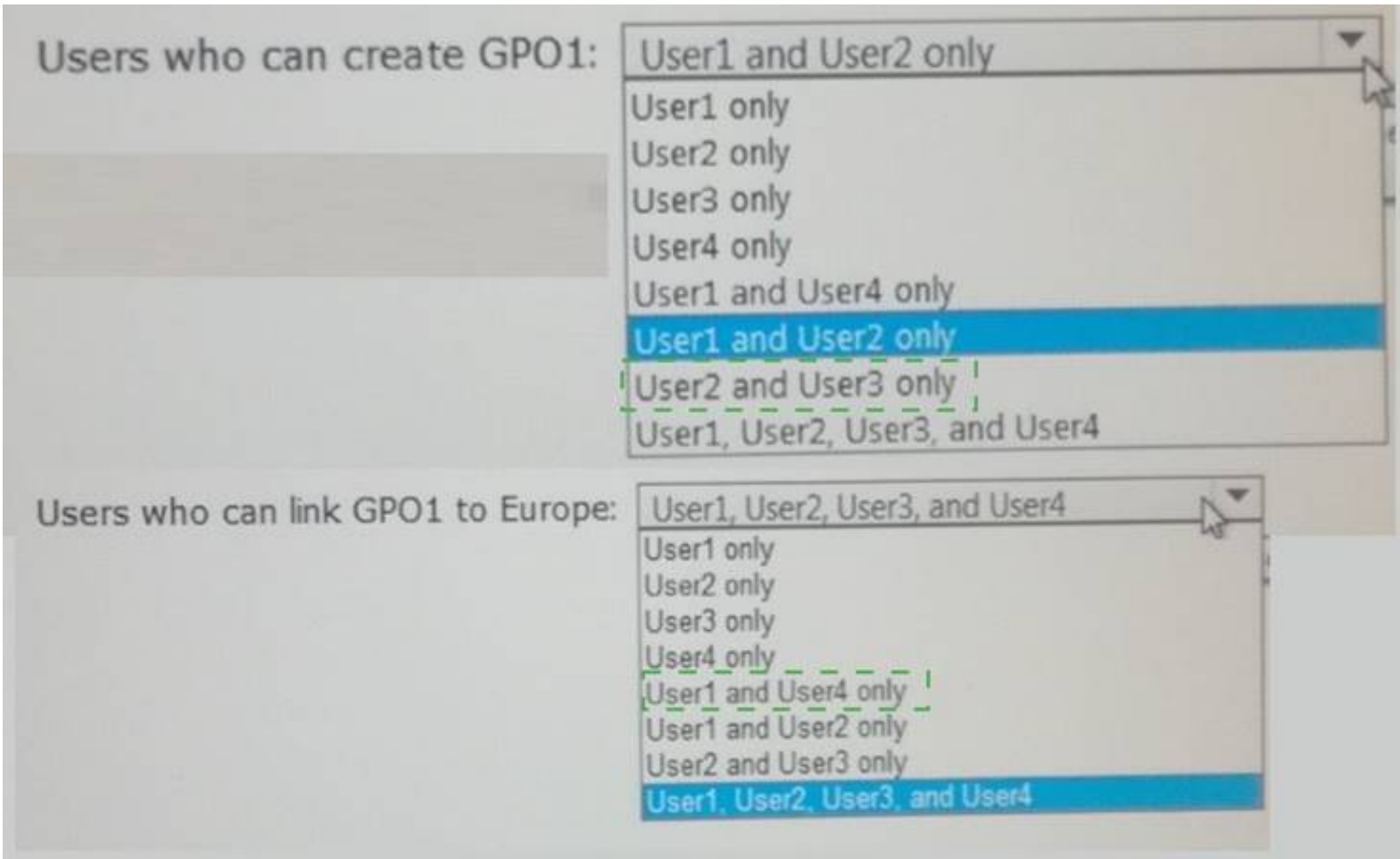
User name	Member of	Domain
User1	Domain Admins	Fabrikam.com
User2	Enterprise Admins	Fabrikam.com
User3	Domain Admins	Sales.fabrikam.com
User4	Domain Admins	Contoso.com

You need to create a Group Policy object (GPO) named GP01 and to link GPO1 to the Europe site. Which users can perform each task? To answer, select the appropriate options in the answer area. NOTE: Each correct selection is worth one point



Answer:

Explanation:



NEW QUESTION 91

You have a server named Server1 that runs Windows Server 2016. Server1 has the Web Application Proxy role service installed. You publish an application named App1 by using the Web Application Proxy. You need to change the URL that users use to connect to App1 when they work remotely. Which command should you run? To answer, select the appropriate options in the answer area.

Answer Area

▼	-ID 874A4543-7983-77A3-1E6D-1163E7419AC1
Set-WebApplicationProxyApplication	
Set-WebApplicationProxyConfiguration	
Set-WebApplicationProxySslCertificate	

▼	https://SP.Contoso.com/
-ADFSUrl	
-BackendServerUrl	
-ExternalURL	

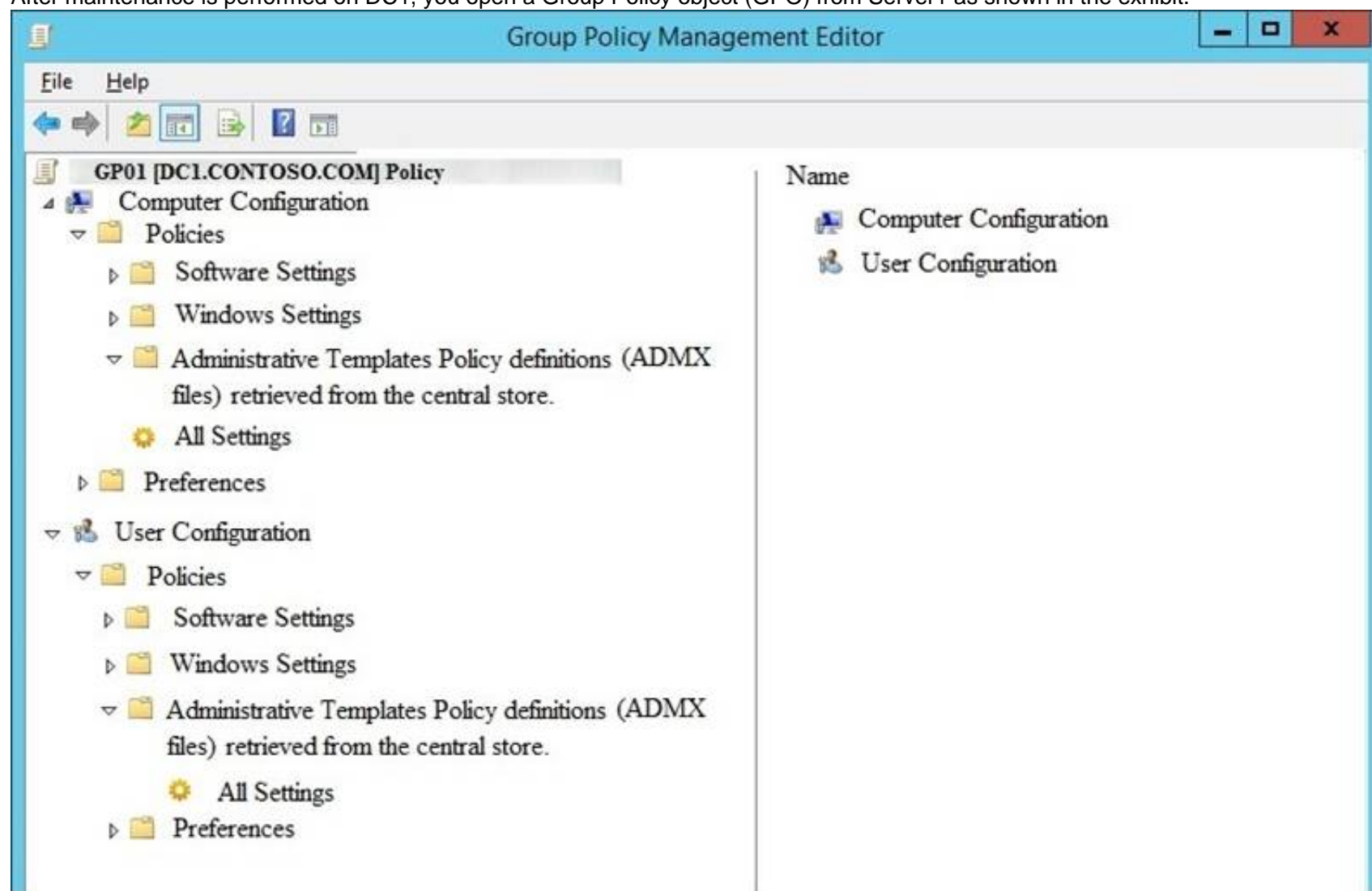
Answer:

Explanation: The Set-WebApplicationProxyApplication cmdlet modifies settings of a web application published through Web Application Proxy. Specify the web application to modify by using its ID. Note that the method of preauthentication cannot be changed. The cmdlet ensures that no other applications are already configured to use any specified ExternalURL or BackendServerURL.

References: <https://technet.microsoft.com/itpro/powershell/windows/wap/set-webapplicationproxyapplication>

NEW QUESTION 95

Your network contains an Active Directory domain named contoso.com. The domain contains a member server named Server1 and a domain controller named DC1. Both servers run Windows Server 2016. Server1 is used to perform administrative tasks, including managing Group Policies. After maintenance is performed on DC1, you open a Group Policy object (GPO) from Server1 as shown in the exhibit.



You need to be able to view all of the Administrative Templates settings in GPO1. What should you do?

- A. From File Explorer, copy the administrative templates from \\contoso.com\SYSVOL\contoso.com\Policies to the PolicyDefinitions folder on Server1.
- B. From File Explorer, delete \\contoso.com\SYSVOL\contoso.com\Policies\PolicyDefinitions.
- C. From File Explorer, delete the PolicyDefinitions folder from Server1.
- D. From Group Policy Management, configure WMI Filtering for GPO1.

Answer: B

NEW QUESTION 99

Note: This question is part of a series of questions that present the same scenario. Each question in the series contains a unique solution that might meet the stated goals. Some question sets might have more than one correct solution, while others might not have a correct solution.

After you answer a question in this section, you will NOT be able to return to it. As a result, these questions will not appear in the review screen.

Your network contains an Active Directory domain named contoso.com. The domain contains a server named Server1 that runs Windows Server 2016. The computer account for Server1 is in organizational unit (OU) named OU1.

You create a Group Policy object (GPO) named GPO1 and link GPO1 to OU1.

You need to add a domain user named User1 to the local Administrators group on Server1. Solution: From a domain controller, you run the Set-AdComputer cmdlet.

Does this meet the goal?

- A. Yes
- B. No

Answer: B

NEW QUESTION 101

You use Application Request Routing (ARR) to make internal web applications available to the Internet by using NTLM authentication.

You need to replace ARR by using the Web Application Proxy. Which server role should you deploy first?

- A. Active Directory Lightweight Directory Services
- B. Active Directory Rights Management Services
- C. Active Directory federation Services
- D. Active Directory Certificate Services

Answer: C

NEW QUESTION 103

Your network contains an Active Directory forest. The forest functional level is Windows Server 2016. You have a failover cluster named Cluster1. Cluster1 has two nodes named Server1 and Server2. All the optional features in Active Directory are enabled.

A junior administrator accidentally deletes the computer object named Cluster1. You discover that Cluster1 is offline.

You need to restore the operation of Cluster1 in the least amount of time possible. What should you do?

- A. Run the Enable-ADAccount cmdlet from Windows PowerShell.
- B. Perform an authoritative restore by running ntdutil.exe.
- C. Perform a tombstone reanimation by running ldp.exe.
- D. Recover a deleted object from the Active Directory Recycle Bin.

Answer: D

NEW QUESTION 105

Your network contains an Active Directory domain named adatum.com. The domain contains a security group named G_Research and an organizational unit (OU) named OU_Research.

All the users in the research department are members of G_Research and their user accounts are in OU_Research.

You need to ensure that all the research department users change their password every 28 days and enforce a complex password that is characters long. What should you do?

- A. From Group Policy Management, create and link a Group Policy object (GPO) to the domain.
- B. Modify the password policy in the GPO Filter the GPO to apply to G_Research only.
- C. From Active Directory Administrative Center, create a new Password Settings object (PSO).
- D. From Active Directory Users and Computers, modify the properties of the Password Settings Container.
- E. From Group Policy Management, create and link a Group Policy object (GPO) to OU_Research.
- F. Modify the password policy in the GPO.

Answer: C

NEW QUESTION 107

Your network contains an Active Directory domain named contoso.com. The domain contains five domain controllers.

You have a branch office that has a local support technician named Tech1. Tech1 installs Windows Server 2016 on a server named RODC1 in a workgroup.

You need Tech1 to deploy RODC1 as a read-only domain controller (RODC) in the contoso.com domain.

Which three actions should you perform? Each correct answer presents part of the solution.

- A. Instruct Tech1 to run the Active Directory Domain Services Configuration Wizard.
- B. Create an RODC computer account by using Active Administrative Center.
- C. Instruct Tech1 to run dcpromo.exe on RODC1.
- D. Instruct Tech1 to install the Active Directory Domain Services server role on RODC1.
- E. Modify the permissions of the Domain Controllers organizational unit (OU).

Answer: ACD

NEW QUESTION 109

You are deploying a web application named WebApp1 to your internal network. WebApp1 is hosted on a server named Web1 that runs Windows Server 2016.

You deploy an Active Directory Federation Services (AD FS) infrastructure and a Web Application Proxy to provide access to WebApp1 for remote users.

You need to ensure that Web1 can authenticate the remote users. What should you do?

- A. Publish WebApp1 by using pass-through preauthentication.
- B. Publish WebApp 1 as a Remote Desktop Gateway (RD Gateway) application in the Web Application Proxy.
- C. Publish WebApp1 by using AD FS preauthentication.
- D. Publish WebApp1 by using client certificate preauthentication.

Answer: A

NEW QUESTION 112

You deploy a new certification authority (CA) to a server that runs Windows Server 2016. You need to configure the CA to support recovery of certificates. What should you do first?

- A. Modify the extensions of the OCSP Response Signing template
- B. Modify the Recovery Agents settings from the properties of the CA.
- C. Assign the Request Certificates permission to the user account that will be responsible for recovering certificates.
- D. Configure the Key Recovery Agent template as a certificate template to issue.

Answer: A

NEW QUESTION 115

Your network contains an Active Directory domain named contoso.com. The domain contains a user named User1, a group named Group1, and an Organizational unit (OU) named OU1.

You need to enable User1 to link Group Policies to OU1.

Solution: From Active Directory Users and Computers, you add User1 to the Group Policy Creator Owner group.

Does this meet the goal?

- A. Yes
- B. No

Answer: B

NEW QUESTION 119

Your network contains an Active Directory domain named contoso.com. You need to create a central store for Group Policy administrator templates. What should you use?

- A. Dcgpofix.exe
- B. Copy-Item
- C. Copy-GPO
- D. Group Policy Management Console (GPMC)

Answer: B

NEW QUESTION 122

Your network contains an Active Directory forest named contoso.com.

You have an Active Directory Federation Services (AD FS) farm. The farm contains a server named Server1 that runs Windows Server 2012 R2.

You add a server named Server2 to the farm. Server2 runs Windows Server 2016. You remove Server1 from the farm.

You need to ensure that you can use role separation to manage the farm. Which cmdlet should you run?

- A. Set-AdfsFarmInformation
- B. Update-AdfsRelyingPartyTrust
- C. Set-AdfsProperties
- D. Invoke-AdfsFarmBehaviorLevelRaise

Answer: D

Explanation: AD FS for Windows Server 2016 introduces the ability to have separation between server administrators and AD FS service administrators.

After upgrading our ADFS servers to Windows Server 2016, the last step is to raise the Farm Behavior Level using the Invoke-AdfsFarmBehaviorLevelRaise PowerShell cmdlet.

To upgrade the farm behavior level from Windows Server 2012 R2 to Windows Server 2016 use the Invoke-ADFSFarmBehaviorLevelRaise cmdlet.

References: [https://technet.microsoft.com/en-us/library/mt605334\(v=ws.11\).aspx](https://technet.microsoft.com/en-us/library/mt605334(v=ws.11).aspx)

NEW QUESTION 124

Your network contains an Active Directory domain named contoso.com. The domain contains two servers named Server1 and Server2 that run Windows Server 2016. The computer accounts of Server1 and Server2 are in the Computers container.

A Group Policy object (GPO) named GPO1 is linked to the domain. GPO1 has multiple computer settings defined and has following configurations.

DisplayName:	GPO1
Domain Name:	Contoso.com
Owner:	CONTOSO\Domain Admins
Id:	bf3b4d96-59f6-4d0f-84c3-b9c37180b9ca
GpoStatus:	UserSettingsDisabled
Description:	
CreationTime:	2/18/2017 7:11:30 AM
ModificationTime:	2/18/2017 9:33:04 AM
UserVersion:	AD Version 18, SysVol Version: 18
ComputerVersion:	AD Version 6, SysVol Version: 6
WmiFilter:	WMI1

An administrator discovers that GPO1 is not applied to Server1. GPO1 is applied to Server2. Which configuration possibly prevents GPO1 from being applied to Server1?

- A. The permissions on the domain object of contoso.com
- B. The WMI filter settings
- C. The Enforced setting of GPO1
- D. The GpoStatus property

Answer: B

NEW QUESTION 129

You network contains an Active Directory domain named contoso.com. The domain contains 1,000 desktop computers and 500 laptops. An organizational unit (OU) named OU1 contains the computer accounts for the desktop computers and the laptops.

You create a Windows PowerShell script named Script1.ps1 that removes temporary files and cookies. You create a Group Policy object (GPO) named GPO1 and link GPO1 to OU1.

You need to run the script once weekly only on the laptops. What should you do?

- A. In GPO1, create a File preference that uses item-level targeting.
- B. In GPO1, create a Scheduled Tasks preference that uses item-level targeting.
- C. In GPO1, configure the File System security policy
- D. Attach a WMI filter to GPO1.
- E. In GPO1, add Script1.ps1 as a startup script
- F. Attach a WMI filter to GPO1.

Answer: B

NEW QUESTION 134

Note: This question is part of a series of questions that present the same scenario. Each question in the series contains a unique solution that might meet the stated goals. Some question sets might have more than one correct solution, while others might not have a correct solution.

After you answer a question in this section, you will NOT be able to return to it. As a result, these questions will not appear in the review screen.

You network contains an Active Directory forest named contoso.com. The forest contains an Active Directory Rights Management Services (AD RMS) deployment.

Your company establishes a partnership with another company named Fabrikam, Inc. The network of Fabrikam contains an Active Directory forest named fabrikam.com and an AD RMS deployment.

You need to ensure that the users in contoso.com can access rights protected documents sent by the users in fabrikam.com.

Solution: From AD RMS in fabrikam.com, you configure contoso.com as a trusted publisher domain. Does this meet the goal?

- A. Yes
- B. No

Answer: B

Explanation: Contoso needs to trust Fabrikam.

NEW QUESTION 137

You network contains an Active Directory forest. The forest contains an Active Directory Federation Services (AD FS) deployment.

The AD FS deployment contains the following:

- * An AD FS server named server1.contoso.com that runs Windows Server 2016
- * A Web Application Proxy used to publish AD FS
- * A LIPN that uses the contoso.com suffix
- * A namespace named adfs.contoso.com

You create a Microsoft Office 365 tenant named contoso.onmicrosoft.com. You use Microsoft Azure Active Directory Connect (AD Connect) to synchronize all of the users and the UPNs from the contoso.com forest to Office 365.

You need to configure federation between Office 365 and the on-premises deployment of Active Directory. Which three commands should you run in sequence from Server1? To answer, move the appropriate

commands from the list of commands to the answer area and arrange them in the correct order.

Commands

Answer Area

Convert-MsolDomainToFederated -DomainName
contoso.com

Enter-PSSession -Name Office365

Convert_MsolDomainToFederated -DomainName
adfs.contoso.com

Set-MsolADFSContext -Computer
server1contoso.com

Connect-MsolService

Set-MsolADFSContext -Computer contoso.com

Answer:

Explanation:

Commands

Answer Area

Convert-MsolDomainToFederated -DomainName
contoso.com

Connect-MsolService

Enter-PSSession -Name Office365

Set-MsolADFSContext -Computer
server1contoso.com

Convert_MsolDomainToFederated -DomainName
adfs.contoso.com

Convert-MsolDomainToFederated -DomainName
contoso.com

Set-MsolADFSContext -Computer
server1contoso.com

Connect-MsolService

Set-MsolADFSContext -Computer contoso.com

NEW QUESTION 139

Note: This question is part of a series of questions that present the same scenario. Each question in the series contains a unique solution that might meet the stated goals. Some question sets might have more than one correct solution, while others might not have a correct solution.

After you answer a question in this section, you will NOT be able to return to it. As a result, these questions will not appear in the review screen.

Your network contains an Active Directory forest named contoso.com. The forest contains a member server named Server1 that runs Windows Server 2016. All domain controllers run Windows Server 2012 R2.

Contoso.com has the following configuration. PS C:\> (Get-ADForest).ForestMode Windows2008R2Forest

PS C:\> (Get-ADDomain).DomainMode

Windows2008R2Domain PS C:\>

You plan to deploy an Active Directory Federation Services (AD FS) farm on Server1 and to configure device registration.

You need to configure Active Directory to support the planned deployment. Solution: You upgrade a domain controller to Windows Server 2016.

Does this meet the goal?

A. Yes

B. No

Answer: B

Explanation: Device Registration requires Windows Server 2012 R2 forest schema.

NEW QUESTION 144

The network contains an Active Directory forest named contoso.com.

The forest contains three domain controllers configured as shown in the following table.

Server name	Active Directory site
Server1	Montreal
Server2	Montreal
Server3	Seattle

The company physically relocates Server2 from the Montreal office to the Seattle office.

You discover that both Server1 and Server2 authenticate users who sign in to the client computers in the Montreal office. Only Server3 authenticates users who sign in to the computers in the Seattle office.

You need to ensure that Server2 authenticates the users in the Seattle office during normal network operations. What should you do?

- A. From Windows PowerShell, run the Set-ADReplicationSite cmdlet.
- B. From Active Directory Users and Computers, modify the Location Property of Server2.
- C. From Network Connections on Server2, modify the Internet Protocol Version 4 (TCP/IPv4) configuration.
- D. From Windows PowerShell, run the Move-ADDirectoryServer cmdlet.

Answer: A

NEW QUESTION 145

You have a server named Server1 that runs Windows Server 2016. You need to configure Server1 as a Web Application Proxy. Which server role or role service should you install on Server1?

- A. Remote Access
- B. Active Directory Federation Services
- C. Web Server (IIS)
- D. DirectAccess and VPN (RAS)
- E. Network Policy and Access Services

Answer: A

NEW QUESTION 149

Your network contains an Active Directory domain. The domain contains computer named Comouter1 and an organizational unit (OU) named TestOU. TestOU contains 10 computer accounts that are used for testing. A Group Policy object (GPO) named GPO1 is linked to TestOU.

On Computer1, you modify the User Right Assignment by using the local policy.

You need to apply the User Right Assignment from Computer1 to the 10 test computers. What should you do?

- A. On Computer1, run the gprcsult.exe command and specify the A paramete
- B. From Group Policy Management, run the Restore Group Policy Object Wizard.
- C. On Computer1, run the secedit.exe command and specify the /export paramete
- D. From Group Policy Management, run the Import Settings Wizard.
- E. On Computer1, run the gpresult.exe command and specify the A paramete
- F. Edit GPO1, and then import a security template.
- G. On Computer1 run the secedit.exe command and specify the /export paramete
- H. Edit GPO1, and then import a security template.

Answer: D

NEW QUESTION 150

Note: This question is part of a series of questions that use the same scenario. For you convenience, the scenario is repeated in each question. Each question presents a different goal and answer choices, but the text of the scenario is exactly the same in each question in this series.

Start of repeated scenario.

You work for a company named Contoso, Ltd.

The network contains an Active Directory forest named contoso.com. A forest trust exists between contoso.com and an Active Directory forest named adatum.com.

The contoso.com forest contains the objects configured as shown in the following table.

Object name	Object type	Group scope	Group type
User1	User	<i>Not applicable</i>	<i>Not applicable</i>
User2	User	<i>Not applicable</i>	<i>Not applicable</i>
Computer1	Computer	<i>Not applicable</i>	<i>Not applicable</i>
Group1	Group	Domain local	Security
Group2	Group	Domain local	Security
Group3	Group	Universal	Security
Group4	Group	Global	Security
Group5	Group	Universal	Security

Group1 and Group2 contain only user accounts.

Contoso hires a new remote user named User3. User3 will work from home and will use a computer named Computer3 that runs Windows 10. Computer3 is currently in a workgroup.

An administrator named Admin1 is a member of the Domain Admins group in the contoso.com domain. From Active Directory Users and Computers, you create an organizational unit (OU) named OU1 in the

contoso.com domain, and then you create a contact named Contact1 in OU1.

An administrator of the adatum.com domain runs the Set-ADUser cmdlet to configure a user named User1 to have a user logon name of User1@litwareinc.com.

End of repeated scenario.

You need to ensure that User2 can add Group4 as a member of Group5. What should you modify?

- A. the group scope of Group5
- B. the Managed By settings of Group4
- C. the group scope of Group4
- D. the Managed By settings of Group5

Answer: D

NEW QUESTION 154

Note: This question is part of a series of questions that present the same scenario. Each question in the series contains a unique solution that might meet the stated goals. Some question sets might have more than one correct solution, while others might not have a correct solution.

After you answer a question in this section, you will NOT be able to return to it. As a result, these questions will not appear in the review screen.

Your network contains an Active Directory forest named contoso.com. The forest contains a member server named Server1 that runs Windows Server 2016. All domain controllers run Windows Server 2012 R2.

Contoso.com has the following configuration. PS C:\> (Get-ADForest).ForestMode Windows2008R2Forest

PS C:\> (Get-ADDomain).DomainMode Windows2008R2Domain

PS C:\>

You plan to deploy an Active Directory Federation Services (AD FS) farm on Server1 and to configure device registration.

You need to configure Active Directory to support the planned deployment. Solution: You raise the domain functional level to Windows Server 2012 R2. Does this meet the goal?

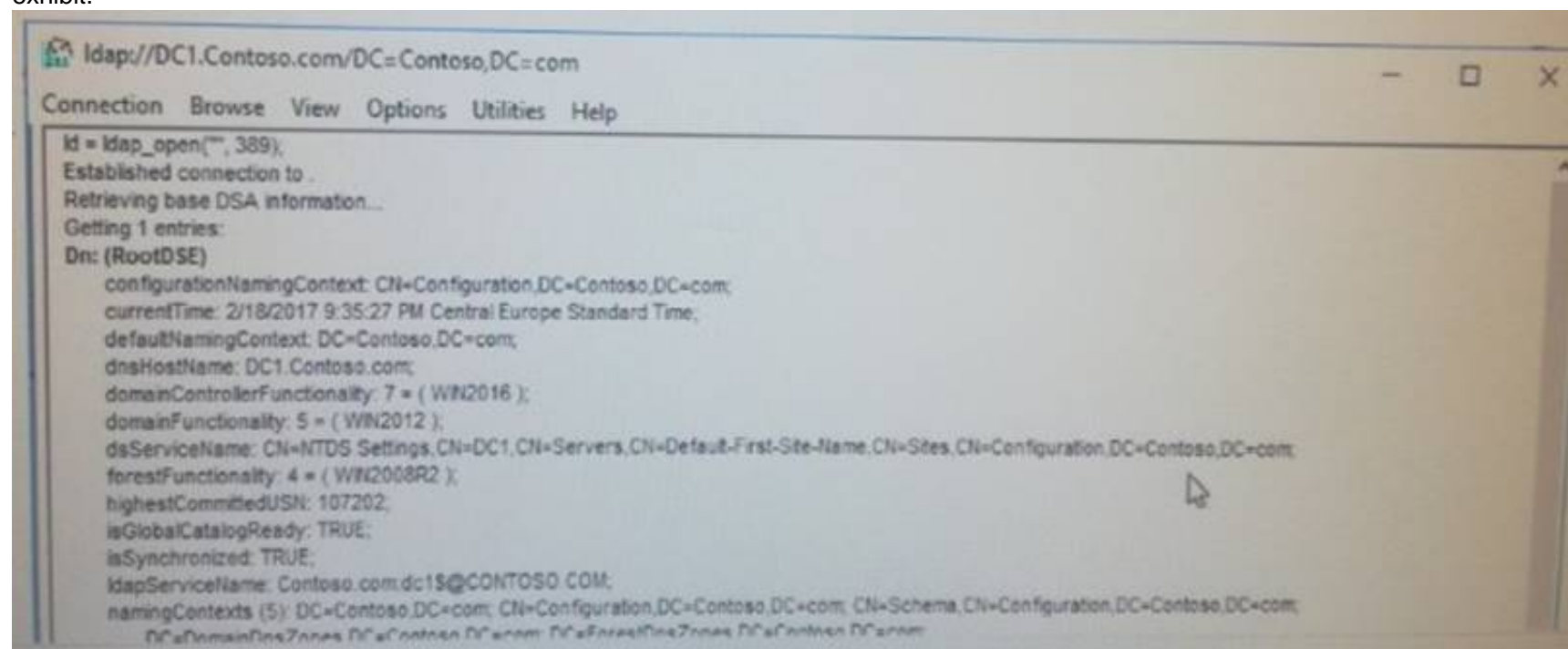
- A. Yes
- B. No

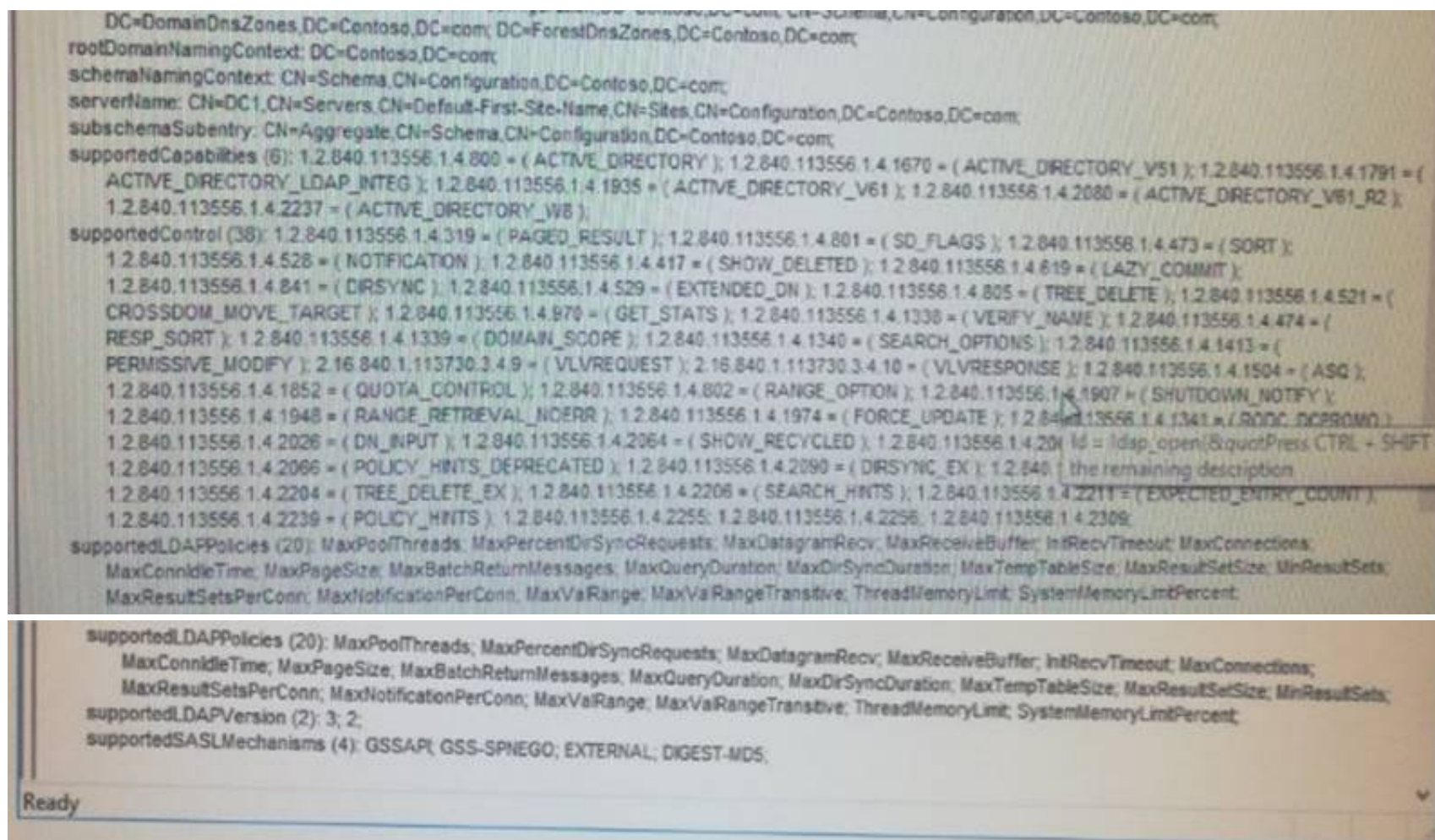
Answer: B

Explanation: Device Registration requires Windows Server 2012 R2 forest schema (not just domain schema).

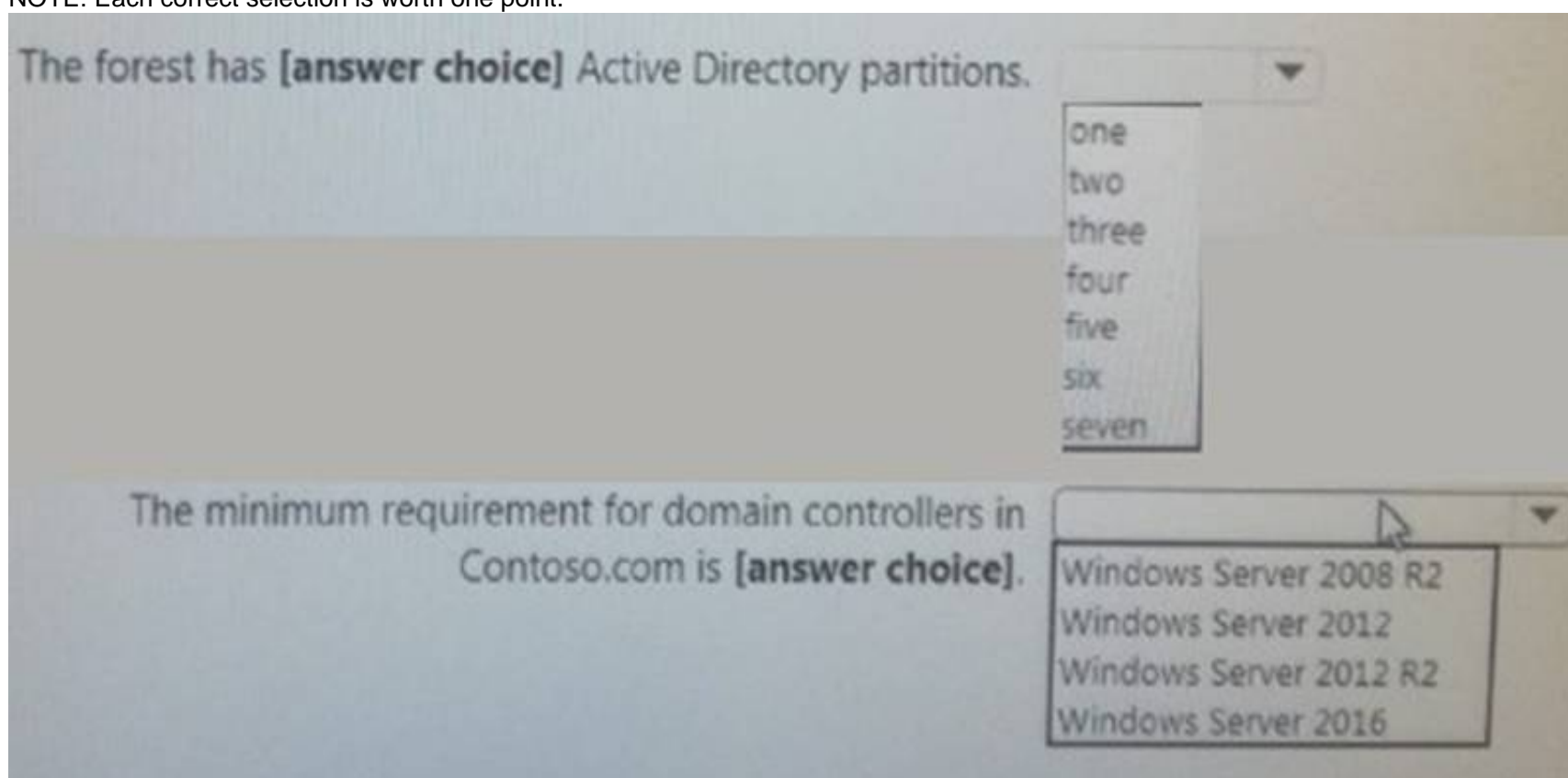
NEW QUESTION 156

Your network contains an Active Directory forest named contoso.com. They connect to the forest by using ldp.exe and receive the output as shown in the following exhibit.



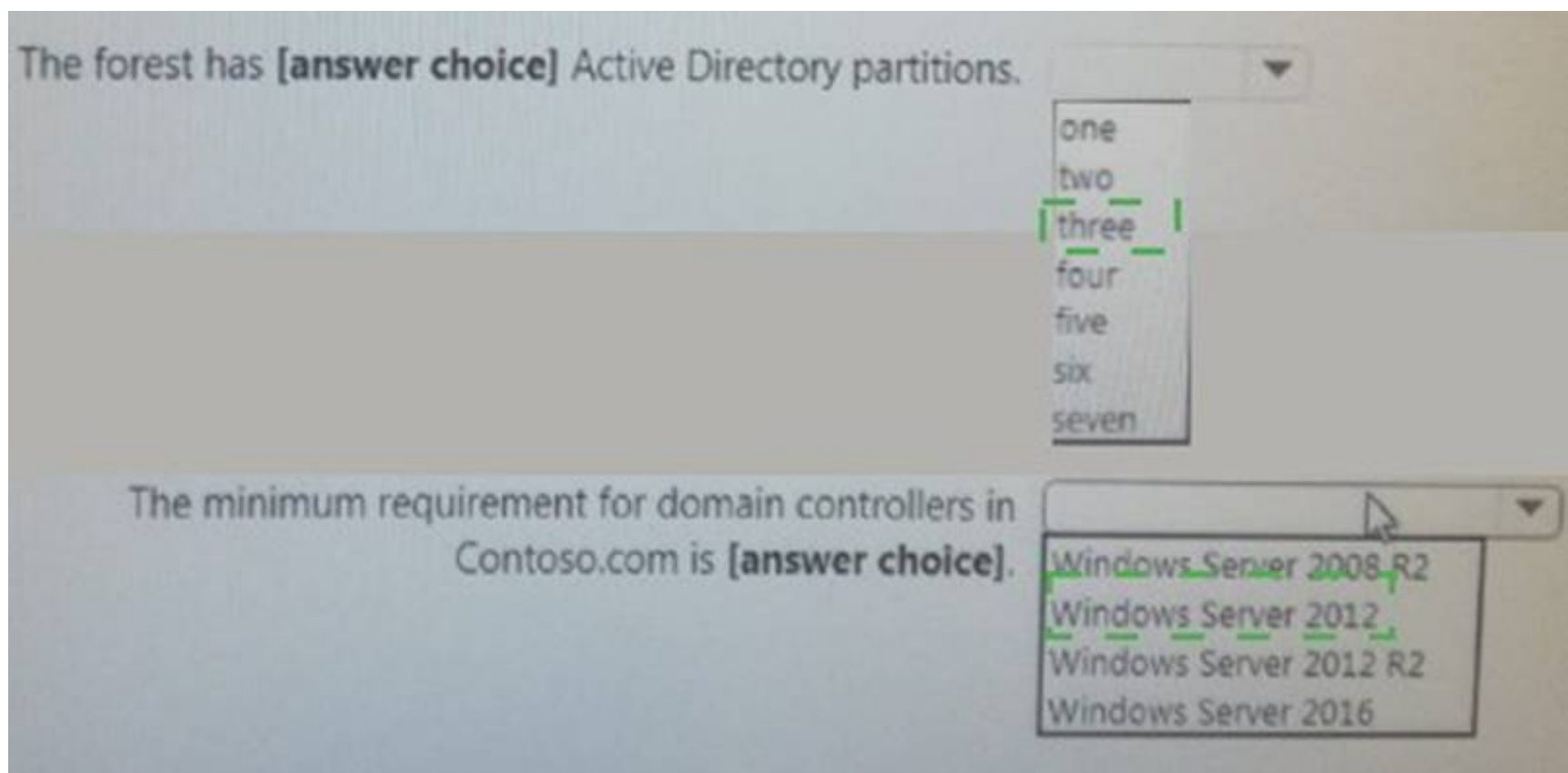


Use drop-down menus to select the answer choice that completes each statement based on the information presented in the graphic.
NOTE: Each correct selection is worth one point.



Answer:

Explanation:

**NEW QUESTION 160**

Your network contains an Active Directory forest.

Some users report experiencing difficulties signing in to domain controllers. You suspect that the service location (SRV) records might be causing the issue.

What are two possible commands that you can run to verify the SRV records? Each correct answer presents a complete solution.

NOTE. Each correct selection is worth one point.

- A. dcdiag.exe /test:connectivity
- B. dnscmd /info
- C. dnscmd /DirectoryPartitionInfo
- D. dcdiag.exe /test:dns /DnsRecordRegistration
- E. dcdiag.exe /test:dns
- F. dnscmd /IPValidate

Answer: BD

Explanation: <https://docs.microsoft.com/en-us/windows-server/identity/ad-ds/manage/troubleshoot/verify-dns-functionality-to>

NEW QUESTION 162

Your network contains an Active Directory domain named contoso.com. The domain contains a user named User1 and an organizational unit (OU) named OU1.

What should you do?

- A. Modify the security settings of GPO1.
- B. Modify the security settings of OU1.
- C. Add User1 to the Group Policy Creator Owner group.
- D. Modify the security settings of User.

Answer: B

NEW QUESTION 163

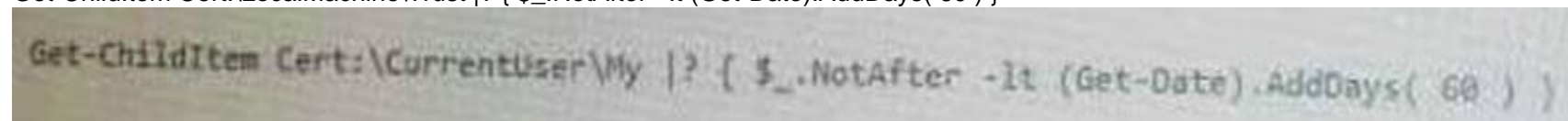
Note: This question is part of a series of questions that present the same scenario. Each question in the series contains a unique solution that might meet the stated goals. Some question sets might have more than one correct solution, while others might not have a correct solution.

After you answer a question in this section, you will NOT be able to return to it. As a result, these questions will not appear in the review screen.

You have a server named Web1 that runs Windows Server 2016.

You need to list all the SSL certificates on Web1 that will expire during the next 60 days. Solution: You run the following command.

Get-ChildItem Cert:\LocalMachine\Trust |? { \$_.NotAfter -lt (Get-Date).AddDays(60) }



Does this meet the goal?

- A. Yes
- B. No

Answer: A

NEW QUESTION 166

Your network contains an Active Directory domain.

You have a user account that is a member of the Domain Admins group.

You have 100 laptops that have a standard corporate image installed. The laptops are in workgroups and have random names.

A technician named Tech1 is assigned the task of joining the laptops to the domain. The computer accounts of each laptop must be in an organizational unit (OU)

that is associated to the department of the user who will use the laptop. The laptop names must start with four characters indicating the department, followed by a fourdigit number.

Tech1 is a member of the Domain Users group only. Tech1 has the administrator logon credentials for all the laptops.

You need Tech1 to join the laptops to the domain. The solution must ensure that the laptops are named correctly, and the computer accounts of the laptops are in the correct OUs.

Solution: You pre-create the computer account of each laptop in Active Directory Users and Computers.

You instruct Tech1 to sign in to each laptop, to rename each laptop, and then to join each laptop to the domain by using System in Control Panel.

Does this meet the goal?

- A. Yes
- B. No

Answer: B

NEW QUESTION 167

Your company has a main office and three branch offices.

The network contains an Active Directory domain named contoso.com.

The main office contains three domain controllers. Each branch office contains one domain controller.

You discover that new settings in the Default Domain Policy are not applied in one of the branch offices, but all other Group Policy objects (GPOs) are applied.

You need to check the replication of the Default Domain Policy for the branch office. What should you do from a domain controller in the main office?

- A. From a command prompt, run dcdiag.exe.
- B. From Group Policy Management, click Default Domain Policy under Contoso.com, and then open theDetails tab.
- C. From Group Policy Management, click Default Domain Policy under Contoso.com, and then open theScope tab.
- D. From a command prompt, run repadmin.exe.

Answer: D

NEW QUESTION 169

Your network contains an Active Directory forest named contoso.com. The forest contains 10 domains. The root domain contains a global catalog server named DC1.

You remove the global catalog server role from DC1.

You need to decrease the size of the Active Directory database on DC1.

Solution:You stop the NTDS service on DC1. You run ntdsutil.exe, use the metadata cleanup option, and then start the NTDS

Does this meet the goal?

- A. Yes
- B. No

Answer: B

Explanation: You need to run ntdsutil.exe with the 'compact to' option. References:

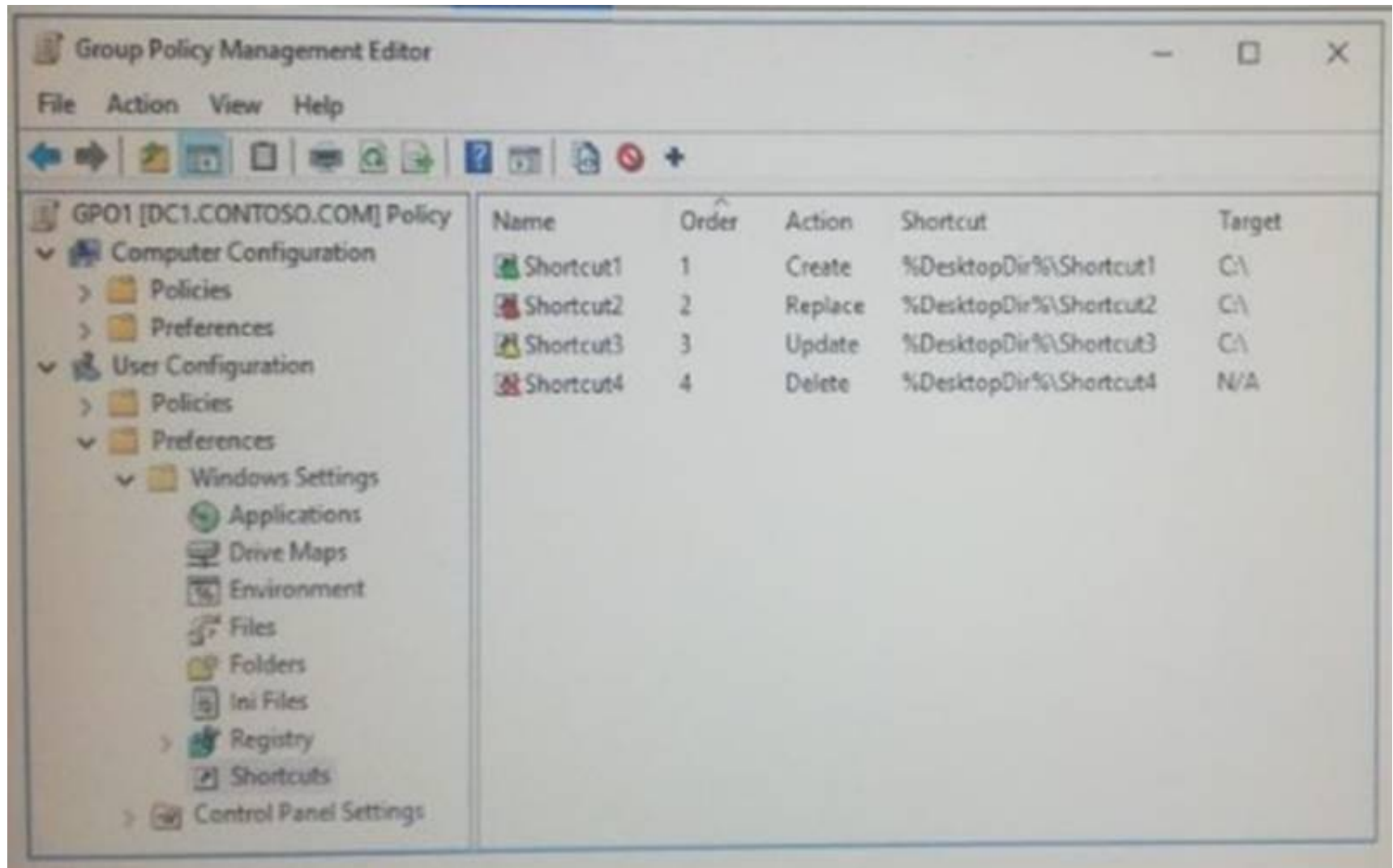
<https://theitbros.com/active-directory-database-compact-defrag/>

NEW QUESTION 174

User1 is in OU1. GPO1 is linked to OU1.

Object name	Type
Computer1	Domain computer
OU1	Organizational unit (OU)
GPO1	Group Policy object (GPO)
User1	User account

The settings in GPO1 are configured as shown in the exhibit. (Click the Exhibit button)



Computer1 does not have any shortcuts on the desktop.

- A. 1
- B. 2
- C. 3
- D. 4

Answer: D

NEW QUESTION 176

Your network contains an Active Directory domain named contoso.com.

You have an organizational unit (OU) named TestOU that contains test computers.

You need to enable a technician named Tech1 to create Group Policy objects (GPOs) and to link the GPOs to TestOU. The solution must use the principle of least privilege.

Which two actions should you perform? Each correct answer presents part of the solution.

- A. Add Tech1 to the Group Policy Creator Owners group.
- B. From Group Policy Management, modify the Delegation settings of the TestOU OU.
- C. Add Tech1 to the Protected Users group.
- D. From Group Policy Management, modify the Delegation settings of the contoso.com container.
- E. Create a new universal security group and add Tech1 to the group.

Answer: AB

NEW QUESTION 180

You network contains an active Directory domain. The domain contains 20 domain controllers.

You discover that some Group Policy objects (PROs) are not being applied by all the domain controllers. You need to verify whether GPOs replicate successfully to all the domain controllers.

What should you do?

- A. Set BurFlags in the registry, and then restart the File Replication Service (FRS). Run dcdiag.exe for each domain controller.
- B. Set BurFlags in the registry, and then restart the File Replication Service (FRS). View the Directory Service event log.
- C. From Group Policy Management, view the Status tab for the domain.
- D. Run repadmin.exe for each GPO.

Answer: D

NEW QUESTION 181

You have a server named Server1 that runs Windows Server 2016. Server1 has the Windows Application Proxy role service installed.

You need to publish Microsoft Exchange ActiveSync services by using the Publish New Application Wizard. The ActiveSync services must use preauthentication.

How should you configure Server1? To answer, select the appropriate options in the answer area.

Answer Area

Preauthentication method:

	▼
Active Directory Federation Services (AD FS)	
Pass-through	

Preauthentication type:

	▼
HTTP Basic	
OAuth2	
Web and MS-OFBA	

Answer:

Explanation:

Answer Area

Preauthentication method:

	▼
Active Directory Federation Services (AD FS)	
Pass-through	

Preauthentication type:

	▼
HTTP Basic	
OAuth2	
Web and MS-OFBA	

NEW QUESTION 184

Your network contains an enterprise root certification authority (CA) named CA1. Multiple computers on the network successfully enroll for certificates that will expire in one year. The certificates are based on a template named Secure_Computer. The template uses schema version 2. You need to ensure that new certificates based on Secure_Computer are valid for three years. What should you do?

- A. Modify the Validity period for the certificate template.
- B. Instruct users to request certificates by running the certreq.exe command.
- C. Instruct users to request certificates by using the Certificates console.
- D. Modify the Validity period for the root CA certificate.

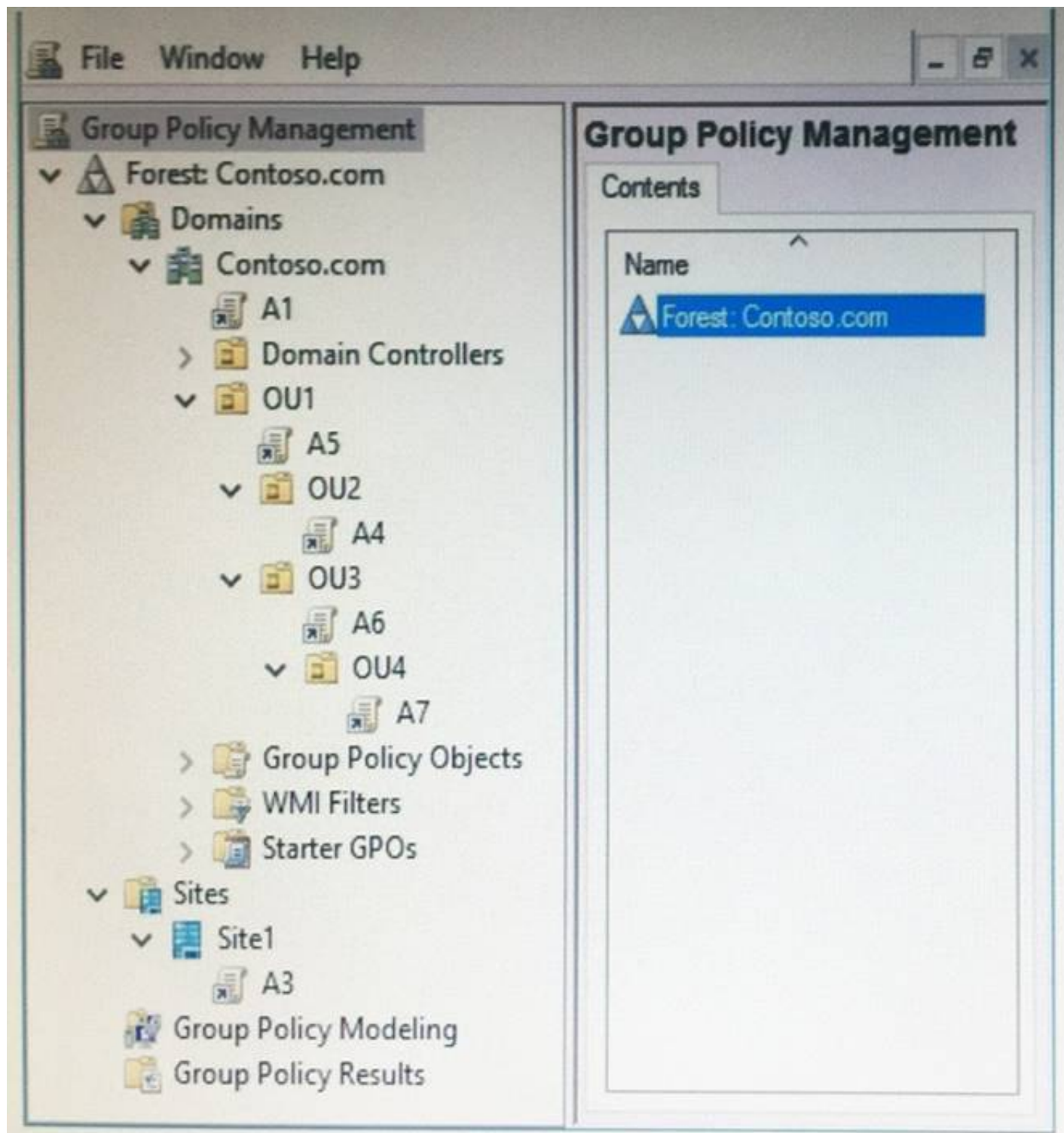
Answer: A

NEW QUESTION 187

Note: This question is part of a series of questions that use the same scenario. For your convenience, the scenario is repeated in each question. Each question presents a different goal and answer choices, but the text of the scenario is exactly the same in each question in this series.

Start of repeated scenario.

Your network contains an Active Directory domain named contoso.com. The domain contains a single site named Site1. All computers are in Site1. The Group Policy objects (GPOs) for the domain are configured as shown in the exhibit. (Click the Exhibit button.)



The relevant users and client computer in the domain are configured as shown in the following table.

Object name	Object type	Object location
Computer	Computer	OU4
User1	User	OU4
User2	User	OU2

End of repeated scenario.

You are evaluating what will occur when you disable the Group Policy link for A6.

Which GPOs will apply to User2 when the user signs in to Computer1 after the link for A6 is disabled?

- A. A1 and A5 only
- B. A3, A1, and A5 only
- C. A3, A1, A5, and A4 only
- D. A3, A1, A5, and A7

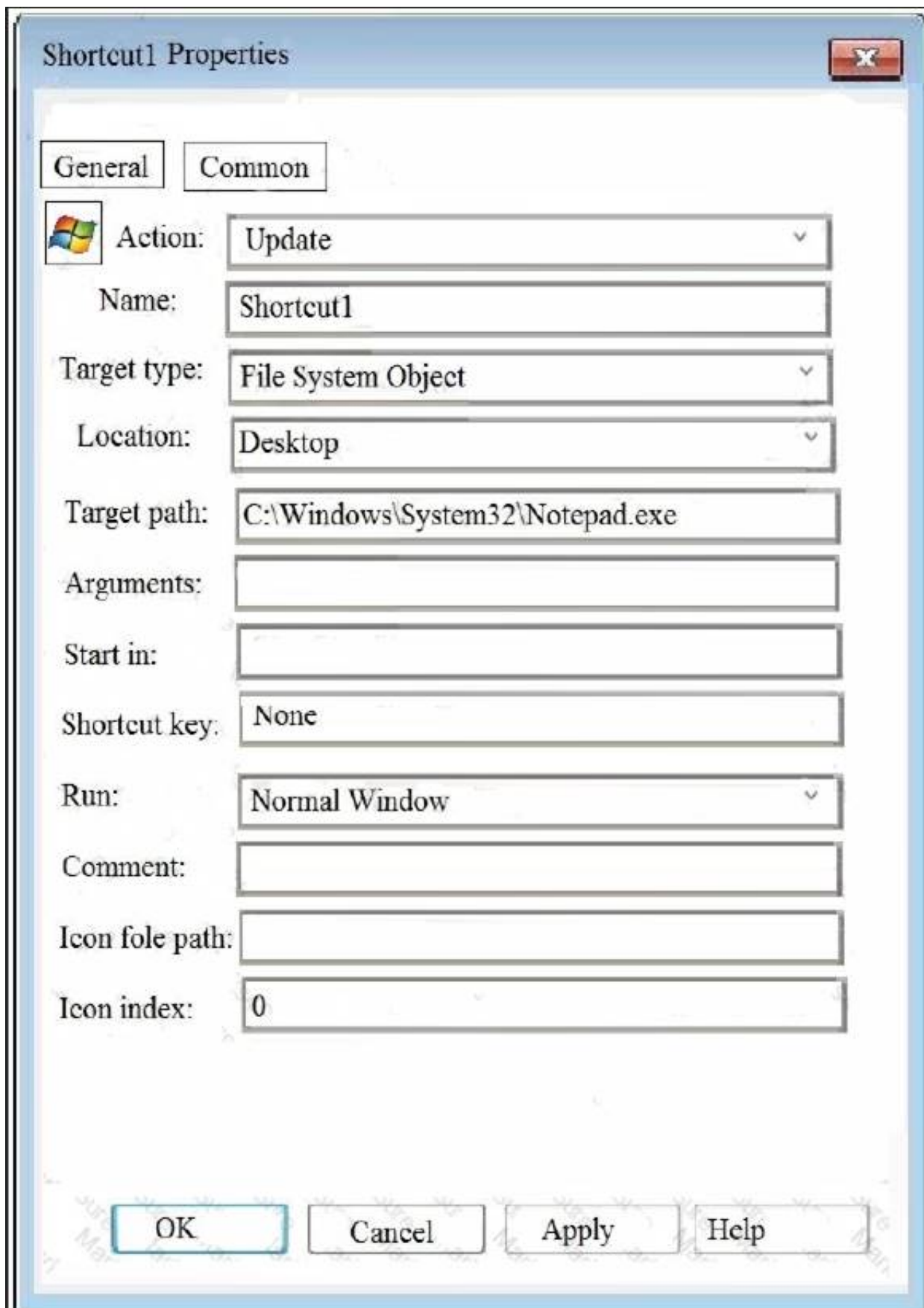
Answer: D

NEW QUESTION 189

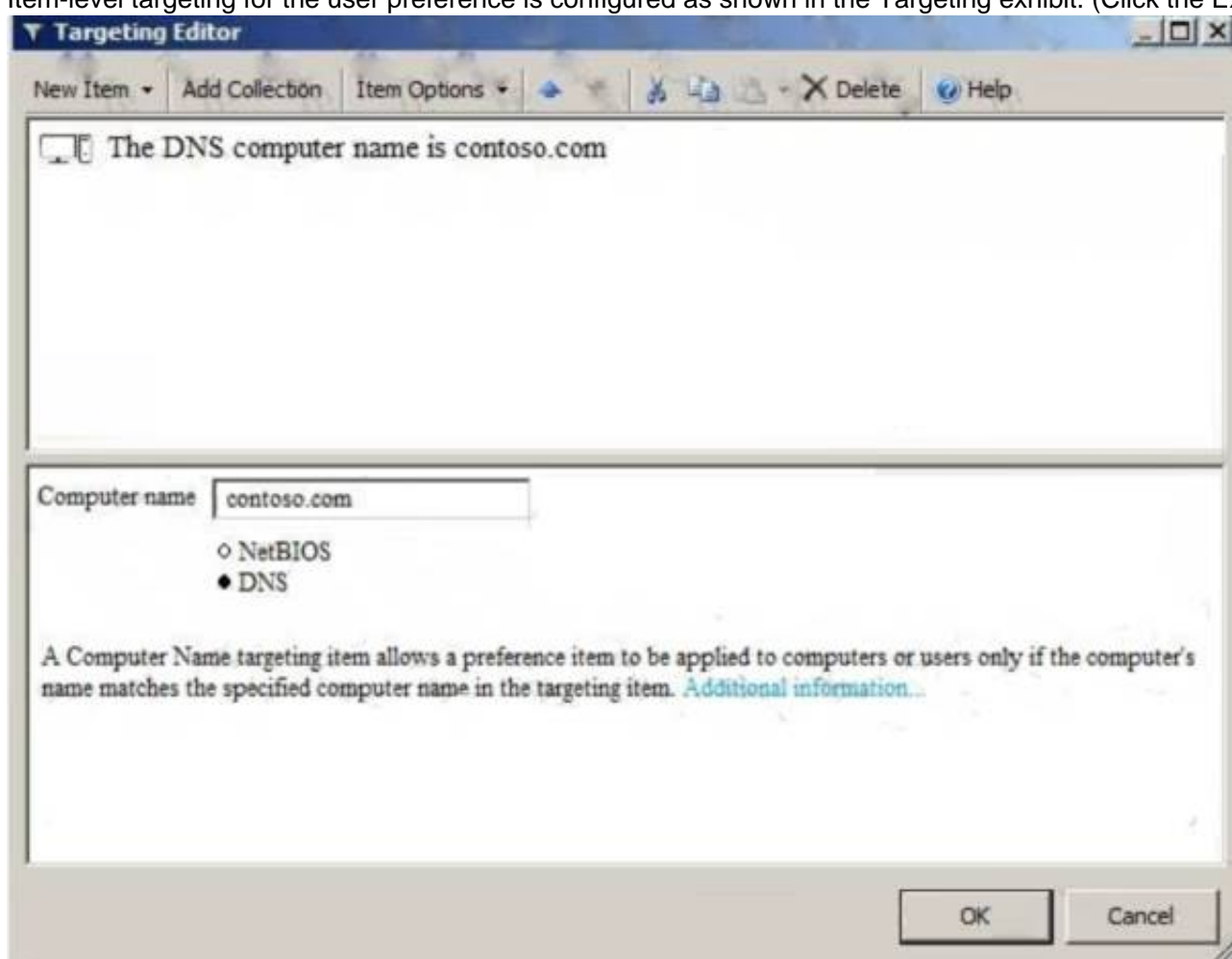
Your network contains an Active Directory domain named contoso.com.

A user named User1 and a computer named Computer1 are in an organizational unit OU1. A user named User2 and a computer named Computer 2 are in an OU named OU2.

A Group Policy object (GPO) named GPO1 is linked to the domain. GPO1 contains a user preference that is configured as shown in the Shortcut1 Properties exhibit. (Click the Exhibit button.)



Item-level targeting for the user preference is configured as shown in the Targeting exhibit. (Click the Exhibit button.)



For each of the following statements, select Yes if the statement is true. Otherwise, select No. NOTE: Each correct selection is worth one point.

Answer Area

Statements	Yes	No
If User1 signs in to Computer1, Shortcut1 will appear on the desktop.	<input type="radio"/>	<input type="radio"/>
If User1 signs in to Computer2, Shortcut1 will appear on the desktop.	<input type="radio"/>	<input type="radio"/>
If User2 signs in to Computer1, Shortcut1 will appear on the desktop.	<input type="radio"/>	<input type="radio"/>

Answer:

Explanation: References:
<https://docs.microsoft.com/en-us/previous-versions/windows/it-pro/windows-server-2008-R2-and-2008/cc73075>

NEW QUESTION 190

Your network contains an Active Directory domain named contoso.com.
You have an organizational unit (OU) named OU1 that contains the computer accounts of two servers and the user account of a user named User1. A Group Policy object (GPO) named GPO1 is linked to OU1.
You have an application named App1 that installs by using an application installer named App1.exe. You need to publish App1 to OU1 by using Group Policy. What should you do?

- A. Create a Config.zap file and add a file to the File System node to the Computer Configuration node of GPO1.
- B. Create a Config.xml file and add a software installation package to the User Configuration node of GPO1.
- C. Create a Config.zap file and add a software installation package to the User Configuration node of GPO1.
- D. Create a Config.xml file and add a software installation package to the Computer Configuration node of GPO1.

Answer: C

NEW QUESTION 193

Note: This question is part of a series of questions that use the same scenario. For your convenience, the scenario is repeated in each question. Each question presents a different goal and answer choices, but the text of the scenario is exactly the same in each question in this series.
Start of repeated Scenario
You work for a company named Contoso, Ltd.
The network contains an Active Directory forest named contoso.com. A forest trust exists between contoso.com and an Active Directory forest named adatum.com.
The contoso.com forest contains the objects configured as shown in the following table.

Object name	Object type	Group scope	Group type
User1	User	<i>Not applicable</i>	<i>Not applicable</i>
User2	User	<i>Not applicable</i>	<i>Not applicable</i>
Computer1	Computer	<i>Not applicable</i>	<i>Not applicable</i>
Group1	Group	Domain local	Security
Group2	Group	Domain local	Security
Group3	Group	Universal	Security
Group4	Group	Global	Security
Group5	Group	Universal	Security

Group 1 and Group2 contain only user accounts.
Contoso hires a new remote user named User3. User3 will work from home and will use a computer named

Computer3 that runs Windows 10. Computer3 is currently in a workgroup.

An administrator named Admin1 is a member of the Domain Admins group in the contoso.com domain. From Active Directory Users and Computers, you create an organizational unit (OU) named OU1 in the

contoso.com domain, and then you create a contact named Contact1 in OU1.

An administrator of the adatum.com domain runs the Set-ADUser cmdlet to configure a user named User1 to have a user logon name of user1@litwareinc.com.

End of repeated scenario

You need to ensure that Admin1 can convert Group1 to a global group. What should you do?

- A. Add Admin1 to the Enterprise Admin group.
- B. Remove all the member from Group1.
- C. Modify the Security settings of Group1.
- D. Convert Group1 to a universal security group.

Answer: B

NEW QUESTION 197

Your network contains an Active Directory domain named contoso.com.

The user account for a user named User1 is in an organizational unit (OU) named OU1. You need to enable User1 to sign in as user1@adatum.com.

Solution: From Windows PowerShell, You run Set-ADObject 'CN=User1, OU=OU1, DC=Contoso,DC=com'

–Add @ {UserPrincipalName='User1@Adatum.com'} –Remove

@{UserPrincipalName='User1@Contoso.com'},

Does this meet the goal?

- A. Yes
- B. No

Answer: A

NEW QUESTION 202

Your network contains an Active Directory forest named contoso.com. The forest contains a member server named Server1 that runs Windows Server 2016.

Server1 is located in the perimeter network.

You install the Active Directory Federation Services server role on Server1. You create an Active Directory Federation Services (AD FS) farm by using a certificate that has a subject name of sts.contoso.com.

You need to enable certificate authentication from the Internet on Server1.

Which two inbound TCP ports should you open on the firewall? Each correct answer presents part of the solution.

- A. 389
- B. 443
- C. 3389
- D. 8531
- E. 49443

Answer: BE

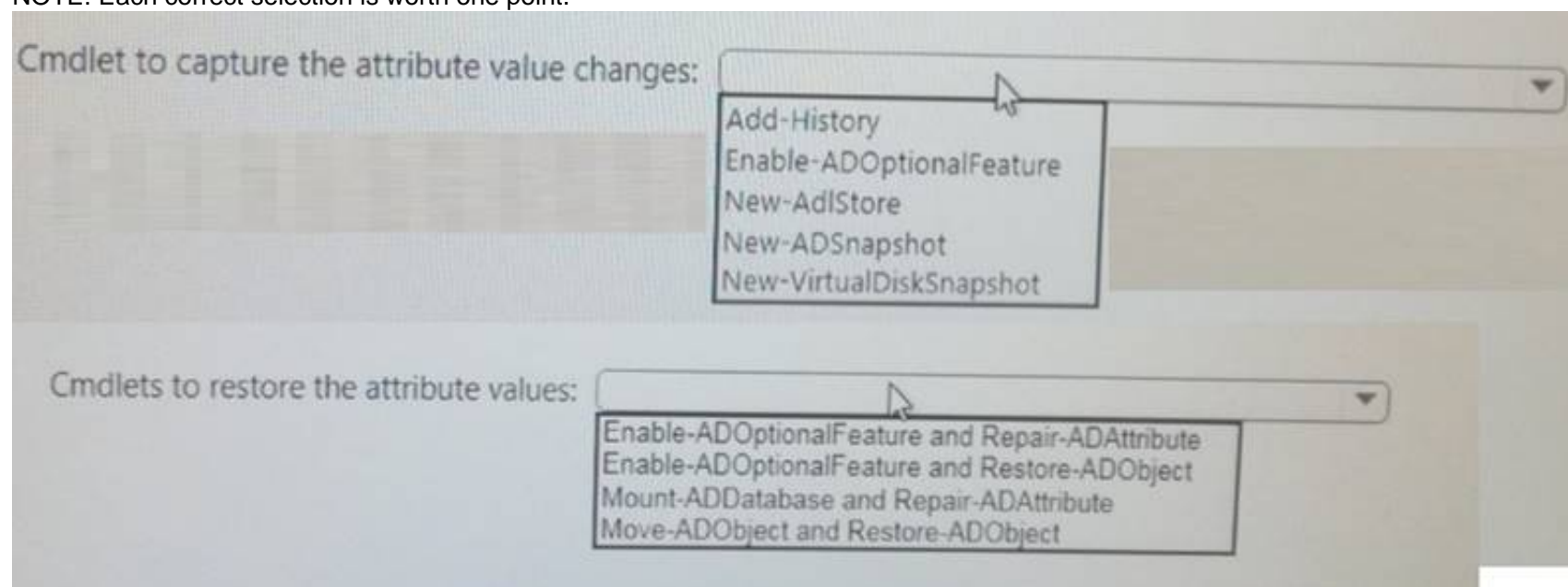
NEW QUESTION 205

Your network contains a single-domain Active Directory forest named contoso.com. The forest functional level is Windows Server 2016. The Active Directory Recycle Bin feature is enabled.

You need to design a procedure to restore the values of user object attributes if the values are changed accidentally.

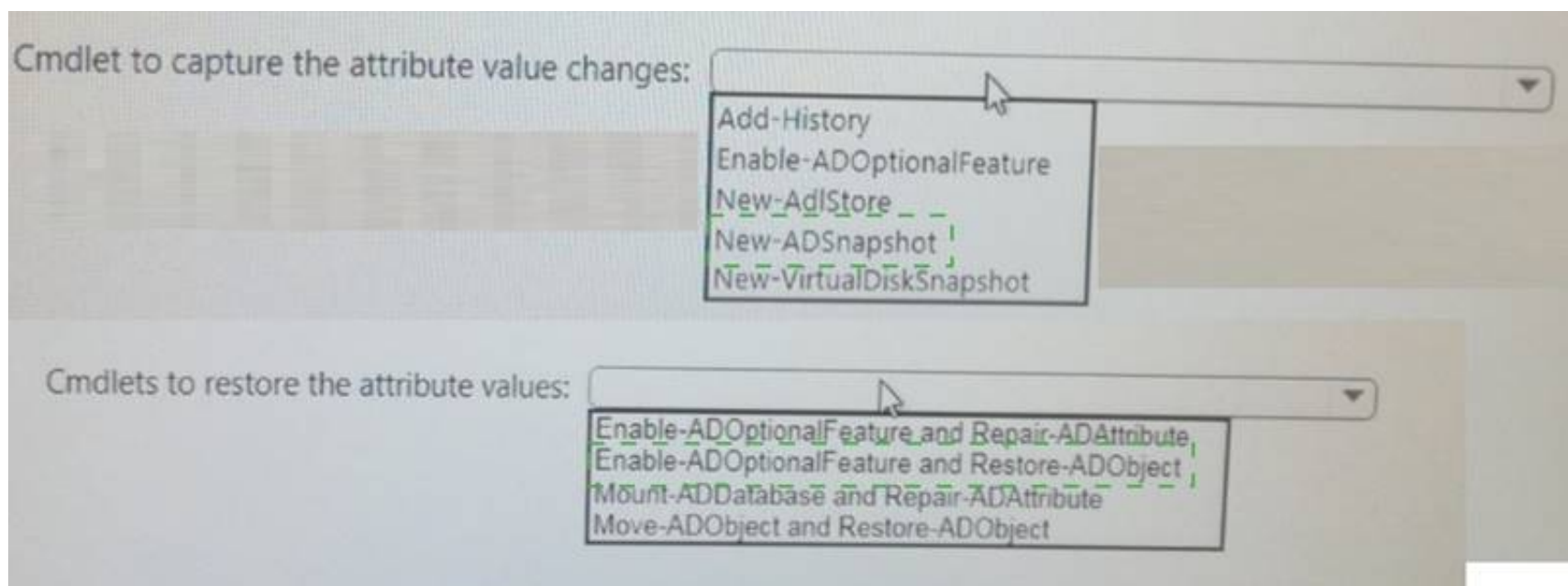
Which cmdlets should you include in the procedure? To answer, select the appropriate options in the answer area.

NOTE: Each correct selection is worth one point.



Answer:

Explanation:



NEW QUESTION 209

Note: This question is part of a series of questions that present the same scenario. Each question in the series contains a unique solution that might meet the stated goals. Some question sets might have more than one correct solution, while others might not have a correct solution.

After you answer a question in this section, you will NOT be able to return to it. As a result, these questions will not appear in the review screen.

Your network contains an Active Directory domain named contoso.com. A user named User1 is in an organizational unit (OU) named OU1.

You are troubleshooting a folder access issue for User1.

You need a list of groups to which User1 is either a direct member or an indirect member. Solution: You run `Get-ADUser -Identity User1 -Property MemberOf`. Does this meet the goal?

- A. Yes
- B. No

Answer: B

Explanation: The `Get-ADUser` cmdlet does not include the `MemberOf` property. The command above is, therefore, not valid.

References:

<https://docs.microsoft.com/en-us/powershell/module/addsadministration/get-aduser?view=win10-ps>

NEW QUESTION 212

Your network contains an Active Directory domain named contoso.com.

The user account for a user named User1 is in an organizational unit (OU) named OU1. You need to enable User1 to sign in as `user1@adatum.com`.

Solution: From Windows PowerShell, You run `Set-ADUser User1 -UserPrincipalName User1@Adatum.com`. Does this meet the goal?

- A. Yes
- B. No

Answer: A

NEW QUESTION 216

Note: This question is part of a series of questions that use the same or similar answer choices. An answer choice may be correct for more than one question in the series. Each question is independent of the other questions in this series.

Information and details provided in a question apply only to that question.

Your network contains an Active Directory domain named contoso.com. The domain contains 5,000 user accounts.

You have a Group Policy object (GPO) named `DomainPolicy` that is linked to the domain and a GPO named `DCPolicy` that is linked to the Domain Controllers organizational unit (OU).

You need to configure the Documents folder of every user to be stored on a server named `FileServer1`. What should you do?

- A. From the Computer Configuration node of `DCPolicy`, modify Security Settings.
- B. From the Computer Configuration node of `DomainPolicy`, modify Security Settings.
- C. From the Computer Configuration node of `DomainPolicy`, modify Administrative Templates.
- D. From the User Configuration node of `DCPolicy`, modify Security Settings.
- E. From the User Configuration node of `DomainPolicy`, modify Folder Redirection.
- F. From user Configuration node of `DomainPolicy`, modify Administrative Templates.
- G. From Preferences in the User Configuration node of `DomainPolicy`, modify Windows Settings.
- H. From Preferences in the Computer Configuration node of `DomainPolicy`, modify Windows Settings.

Answer: E

NEW QUESTION 220

Your network contains an Active Directory domain named contoso.com. The domain contains an Active Directory Federation Services (AD FS) server named `Server1`.

On a standalone server named `Server2`, you install and configure the Web Application Proxy.

You have an internal web application named `WebApp1`. AD FS has a relying party trust for `WebApp1`. You need to provide external users with access to `WebApp1`. Authentication to `WebApp1` must use AD FS pre-authentication.

Which tool should you use to publish `WebApp1`?

- A. Remote Access Management on Server1
- B. AD FS Management on Server2
- C. Remote Access Management on Server2
- D. Routing and Remote Access on Server1
- E. AD FS Management on Server1.

Answer: C

Explanation: References:

<https://docs.microsoft.com/en-us/windows-server/remote/remote-access/web-application-proxy/publishing-appli>

NEW QUESTION 224

Your network contains an Active Directory forest. The forest contains two domains named litwareinc.com and contoso.com. The contoso.com domain contains two domain controllers named LON-DC01 and LON-DC02. The domain controllers are located in a site named London that is associated to a subnet of 192.168.10.0/24.

You discover that LON-DC02 is not a global catalog server. You need to configure LON-DC02 as a global catalog server.

What should you do?

- A. From Active Directory Sites and Services, modify the NTDS Settings object of the London site.
- B. From Windows Power Shell, run the Enable-ADOptionalFeature cmdlet.
- C. From the properties of the LON-DC02 computer account in Active Directory Users and Computers modify the NTDS settings.
- D. From the properties of the LON-DC02 computer account in Active Directory Users and Computers, modify the City attribute.

Answer: C

NEW QUESTION 228

A technician named Tech1 is assigned the task of joining the laptops to the domain. The computer accounts of each laptop must be in an organizational unit (OU) that is associated to the department of the user who will use that laptop. The laptop names must start with four characters indicating the department followed by a four-digit number

Tech1 is a member of the Domain Users group only. Tech1 has the administrator logon credentials for all the laptops.

You need Tech1 to join the laptops to the domain. The solution must ensure that the laptops are named correctly, and that the computer accounts of the laptops are in the correct OUs.

Solution: You instruct Tech1 to sign in to each laptop, to rename each laptop by using System in Control Panel, and then to join each laptop to the domain by using the Netdom join command.

Does this meet the goal?

- A. Yes
- B. No

Answer: A

NEW QUESTION 230

You have users that access web applications by using HTTPS. The web applications are located on the servers in your perimeter network. The servers use certificates obtained from an enterprise root certification authority (CA). The certificates are generated by using a custom template named WebApps. The certificate revocation list (CRL) is published to Active Directory.

When users attempt to access the web applications from the Internet, the users report that they receive a revocation warning message in their web browser. The users do not receive the message when they access the web applications from the intranet.

You need to ensure that the warning message is not generated when the users attempt to access the web applications from the Internet.

What should you do?

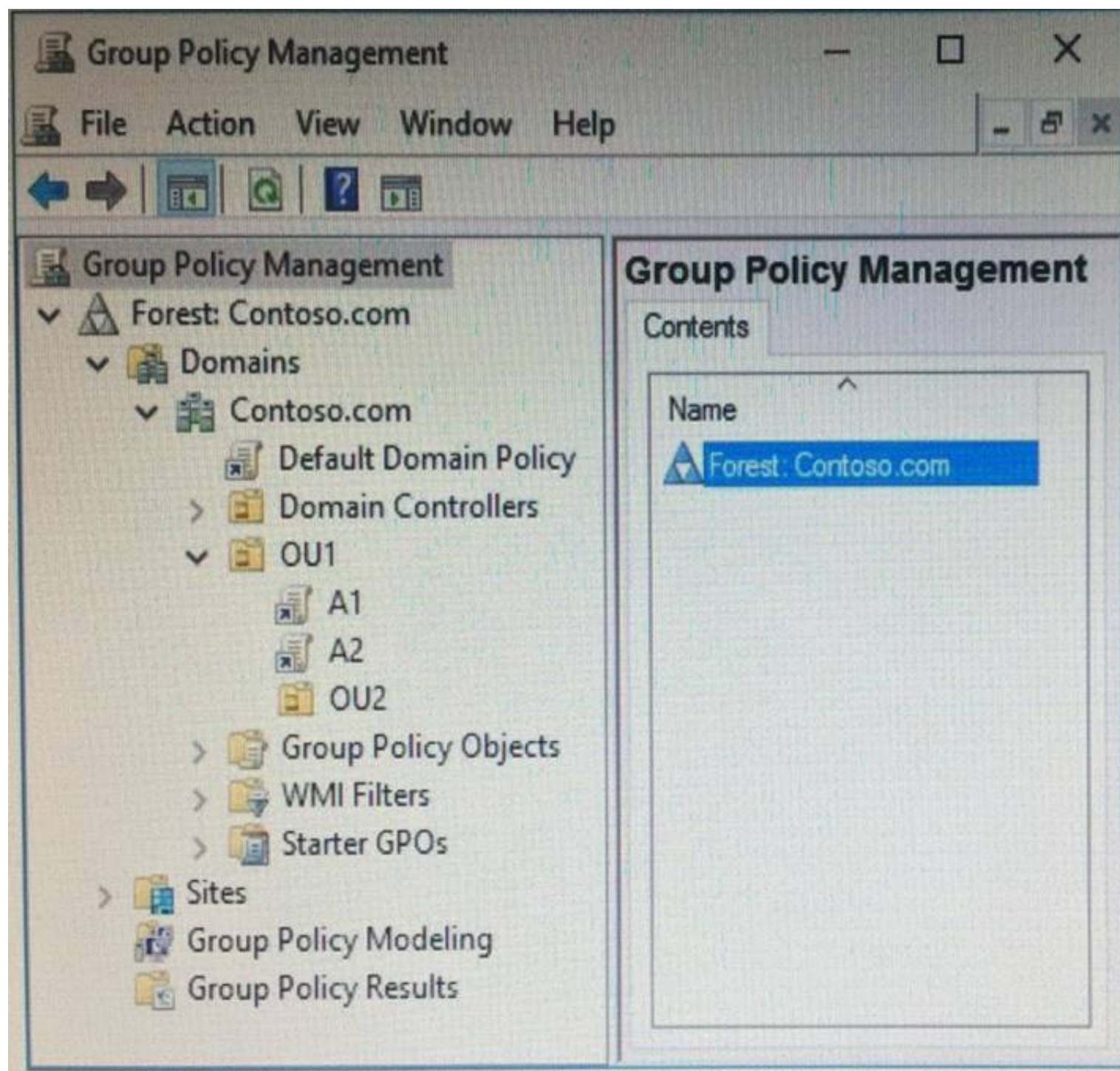
- A. Install the Certificate Enrollment Web Service role service on a server in the perimeter network.
- B. Modify the WebApps certificate template, and then issue the certificates used by the web application servers.
- C. Install the Web Application Proxy role service on a server in the perimeter network
- D. Create a publishing point for the CA.
- E. Modify the CRL distribution point, and then reissue the certificates used by the web application servers.

Answer: C

NEW QUESTION 234

Your network contains an Active Directory domain named contoso.com.

You open Group Policy Management as shown in the exhibit. (Click the Exhibit button.)



You discover that some of the settings configured in the A1 Group Policy object (GPO) fail to apply to the users in the OU1 organizational unit (OU). You need to ensure that all of the settings in A1 apply to the users in OU1. What should you do?

- A. Enable loopback policy processing in A1.
- B. Block inheritance on OU1.
- C. Modify the policy processing order for OU1.
- D. Modify the GPO Status of A1.

Answer: C

NEW QUESTION 239

You network contains an Active Directory domain named contoso.com. The domain contains an Active Directory Federation Services (AD FS) server named ADFS1, a Web Application Proxy server named WAP1, and a web server named Web1. You need to publish a website on Web1 by using the Web Application Proxy. Users will authenticate by using OAuth2 preauthentication. What should you do first?

- A. On Web1, add site bindings.
- B. On Web1, add handler mappings.
- C. On ADFS1, enable an endpoint.
- D. On ADFS1, add a claims provider trust.

Answer: D

NEW QUESTION 243

Your company has a marketing department and a security department. The network contains an Active Directory domain named contoso.com. The domain contains an enterprise certification authority (CA). You have two organizational units (OUs) named MKT_UsersOU and MKT_ComputersOU. MKT_UsersOU contains the user accounts for the users in the marketing department. MKT_ComputersOU contains the computer accounts for the computers in the marketing department. A Group policy object (GPO) named GPO1 is linked to MKT_UsersOU. A GPO named GPO2 linked to MKT_ComputersOU. You plan to deploy a web application for the marketing department users. The application will require certificates for authentication. The security department configures the CA to support the planned deployment. You need to ensure that the web application can authenticate the marketing department users. What should you do?

- A. From the User Configuration node of GPO1, create an Internet Setting preference.
- B. From the User Configuration node of GPO1, configure the Certificate Services Client - Auto enrollment settings.
- C. From the Computer Configuration node of GPO2, configure the Certificate Services Client - Certificate Enrollment Policy settings.
- D. From the Computer Configuration node of GPO2, create the Automatic Certificate Request Settings.

Answer: A

NEW QUESTION 247

Your network contains an Active Directory domain named contoso.com. The domain functional level is Windows Server 2012 R2. You need to secure several high-privilege user accounts to meet the following requirements: What should you do?

- A. Create a universal security group for the user accounts and modify the Security settings of the group.
- B. Add the users to the Windows Authorization Access Group group.
- C. Add the user to the Protected Users group.
- D. Create a separate organizational unit (OU) for the user accounts and modify the Security settings of the OU.

Answer: C

NEW QUESTION 249

Your company implements Active Directory Federation Services (AD FS).

You confirm that the company meets all the prerequisites for using Microsoft Azure Multi-Factor Authentication (MFA) and AD FS.

You need to ensure that you can select MFA as the primary authentication method for AD FS.

Which three actions should you perform in sequence? To answer move the appropriate actions from the list of actions to the answer area and arrange them in the correct order.

Actions

Add a claims provider trust.

Run the New-AdfsAzureMfatenant Certificate cmdlet.

Run the New-MSolServicePrincipal Credential cmdlet.

Edit the authentication methods.

Run the Set-AdfsAzureMfaTenant cmdlet.

Answer Area

1.

2.

3.

Answer:

Explanation:

Actions

Add a claims provider trust.

Run the New-AdfsAzureMfatenant Certificate cmdlet.

Run the New-MSolServicePrincipal Credential cmdlet.

Edit the authentication methods.

Run the Set-AdfsAzureMfaTenant cmdlet.

Answer Area

1.

Run the New-AdfsAzureMfatenant Certificate cmdlet.

2.

Run the New-MSolServicePrincipal Credential cmdlet.

3.

Run the Set-AdfsAzureMfaTenant cmdlet.

NEW QUESTION 254

Note: This question is part of a series of questions that present the same scenario. Each question in the series contains a unique solution that might meet the stated goals. Some question sets might have more than one correct solution, while others might not have a correct solution.

After you answer a question in this section, you will NOT be able to return to it. As a result, these questions will not appear in the review screen.

You network contains an Active Directory forest named contoso.com. The forest contains an Active Directory

Rights Management Services (AD RMS) deployment.

Your company establishes a partnership with another company named Fabrikam, Inc. The network of Fabrikam contains an Active Directory forest named fabrikam.com and an AD RMS deployment.

You need to ensure that the users in contoso.com can access rights protected documents sent by the users in fabrikam.com.

Solution: From AD RMS in contoso.com, you configure fabrikam.com as a trusted publisher domain. Does this meet the goal?

A. Yes

B. No

Answer: A

NEW QUESTION 259

Your network contains an Active Directory forest named contoso.com.

Your company has a custom application named ERP1. ERP1 uses an Active Directory Lightweight Directory Services (AD LDS) server named Server1 to authenticate users.

You have a member server named Server2 that runs Windows Server 2016. You install the Active Directory Federation Services (AD FS) server role on Server2 and create an AD FS farm.

You need to configure AD FS to authenticate users from the AD LDS server.

Which cmdlets should you run? To answer, select the appropriate options in the answer area.

Answer Area

First cmdlet to run:

	▼
Add-AdfsRelyingPartyTrust	
New-AdfsLdapServerConnection	
Set-AdfsEndpoint	

Second cmdlet to run:

	▼
Add-AdfsLocalClaimsProviderTrust	
Enable-AdfsRelyingPartyTrust	
Set-AdfsEndpoint	

Answer:

Explanation: To configure your AD FSfarm to authenticate users from an LDAP directory, you can complete the following steps:

Step 1: New-AdfsLdapServerConnection

First, configure a connection to your LDAP directory using the New-AdfsLdapServerConnection cmdlet:

\$DirectoryCred = Get-Credential

\$vendorDirectory = New-AdfsLdapServerConnection -HostName dirserver -Port 50000-SslMode None

-AuthenticationMethod Basic -Credential \$DirectoryCred

Step 2 (optional):

Next, you can perform the optional step of mapping LDAP attributes to the existing AD FS claims using the New-AdfsLdapAttributeToClaimMapping cmdlet.

Step 3: Add-AdfsLocalClaimsProviderTrust

Finally, you must register the LDAP store with AD FS as a local claims provider trust using the Add-AdfsLocalClaimsProviderTrust cmdlet:

Add-AdfsLocalClaimsProviderTrust -Name "Vendors" -Identifier "urn:vendors" -Type L References: [https://technet.microsoft.com/en-us/library/dn823754\(v=ws.11\).aspx](https://technet.microsoft.com/en-us/library/dn823754(v=ws.11).aspx)

NEW QUESTION 264

Note: This question is part of a series of questions that present the same scenario. Each question in the series contains a unique solution that might meet the stated goals. Some question sets might have more than one correct solution, while others might not have a correct solution.

After you answer a question in this section, you will NOT be able to return to it. As a result, these questions will not appear in the review screen.

You have a server named Web1 that runs Windows Server 2016.

You need to list all the SSL certificates on Web1 that will expire during the next 60 days. Solution: You run the following command.

```
Get-Childitem Cert:\LocalMachine\My |? { $_.NotAfter -lt (Get-Date).AddDays( 60 ) }
```

Does this meet the goal?

A. Yes

B. No

Answer: B

NEW QUESTION 268

Your company has a marketing department.

The network contains an Active Directory domain named comoso.com.

The domain contains two top-level organizational units (OUs) named MKT_Comps and MKT_Users. MKT_Comps contains the computer accounts for the computers in the marketing department. MKT_Users contains the user accounts for the users in the marketing department. You link a new Group Policy object (GPO) named GPO1 to MKT_Comps. You need to deploy a VPN connection to all of the users who sign in to the marketing department computers. The users must be

- A. Computer Configuration/Policies/Administrative Templates/Network/Network Connections
- B. Computer Configuration/Preferences/Control Panel Settings/Network Options
- C. User Configuration/Preferences/Control Panel Settings/Network Options
- D. User configuration/Policies/Administrative Templates/Network/Network Connections

Answer: B

NEW QUESTION 269

Note: This question is part of a series of questions that use the same or similar answer choice. An answer choice may be correct for more than one question in the series. Each question is Independent of the other questions in this series. Information and details provided in a question apply only to that question. Your network contains an Active Directory domain named contoso.com. The domain functional level is Windows Server 2012 R2. Your company hires 3 new security administrators to manage sensitive user data. You create a user account named Secunty1 for the security administrator. You need to ensure that the password for Secunty1 has at least 12 characters and is modified every 10 days. The solution must apply to Security 1 only. Which tool should you use?

- A. Dsadd quota
- B. Dsmod
- C. Active Directory Administrative Center
- D. Dsacis
- E. Dsamain

Answer: C

Explanation: Using Fine-Grained Password Policies you specify multiple password policies in a single domain and apply different restrictions for password and account lockout policies to different sets of users in a domain. You can apply stricter settings to privileged accounts and less strict settings to the accounts of other users. To enable Fine-Grained Password Policies (FGPP), you need to open the Active Directory Administrative Center (ADAC) <https://blogs.technet.microsoft.com/canitpro/2013/05/29/step-by-step-enabling-and-using-fine-grained->

NEW QUESTION 274

Your network contains an Active Directory domain named contoso.com. The domain contains a server named Server1 that runs Windows Server 2016. On Server1, you create a local user named User1. User1 is a member of the local Administrators group. Server1 has the following local Group Policies: K

- Local Computer Policy
- Local Computer\User1Policy
- Local Computer\Administrators Policy

You need to force User1 to change his password every 14 days. Solution: You create a Password Setting object (PSO) in the domain.

- A. Yes
- B. No

Answer: B

NEW QUESTION 277

Note: This question is part of a series of questions that present the same scenario. Each question in the series contains a unique solution that might meet the stated goals. Some question sets might have more than one correct solution, while others might not have a correct solution. After you answer a question in this section, you will NOT be able to return to it. As a result, these questions will not appear in the review screen. Your network contains an Active Directory domain named contoso.com. The domain contains two domain controllers named DC1 and DC2. DC1 holds the RID master operations role. DC1 fails and cannot be repaired. You need to move the RID role to DC2. Solution: On DC2, you open Windows PowerShell and run

Move-AddirectoryServerOperationMasterRole -OperationMasterRidMaster -Identity DC2.Adatum.com Does this meet the goal?

- A. Yes
- B. No

Answer: B

Explanation: You would need to use the -Force parameter because the server that held the role (DC1) is offline.

NEW QUESTION 278

Your network contains an Active Directory domain named contoso.com. You plan to deploy a new Active Directory Rights Management Services (AD RMS) cluster on a server named Server1. You need to create the AD RMS service account. The solution must use the principle of least privilege. What should you do?

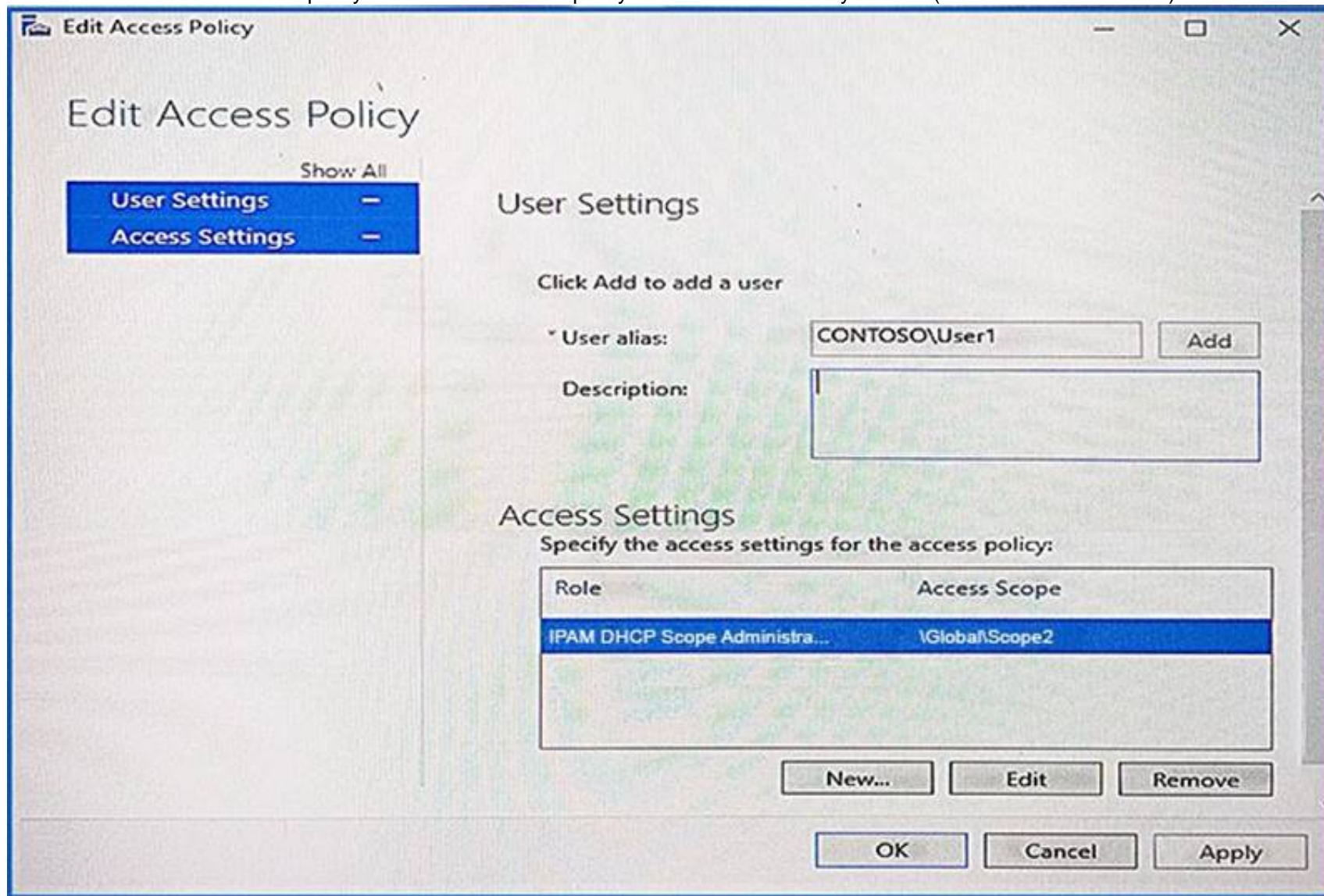
- A. Create a domain user account and add the account to the Administrators group on Server1.
- B. Create a local user account on Server1 and add the account to the Administrators group on Server1.
- C. Create a domain user account and add the account to the Domain Users group in the domain
- D. Create a domain user account and add the account to the Account Operators group in the domain.

Answer: A

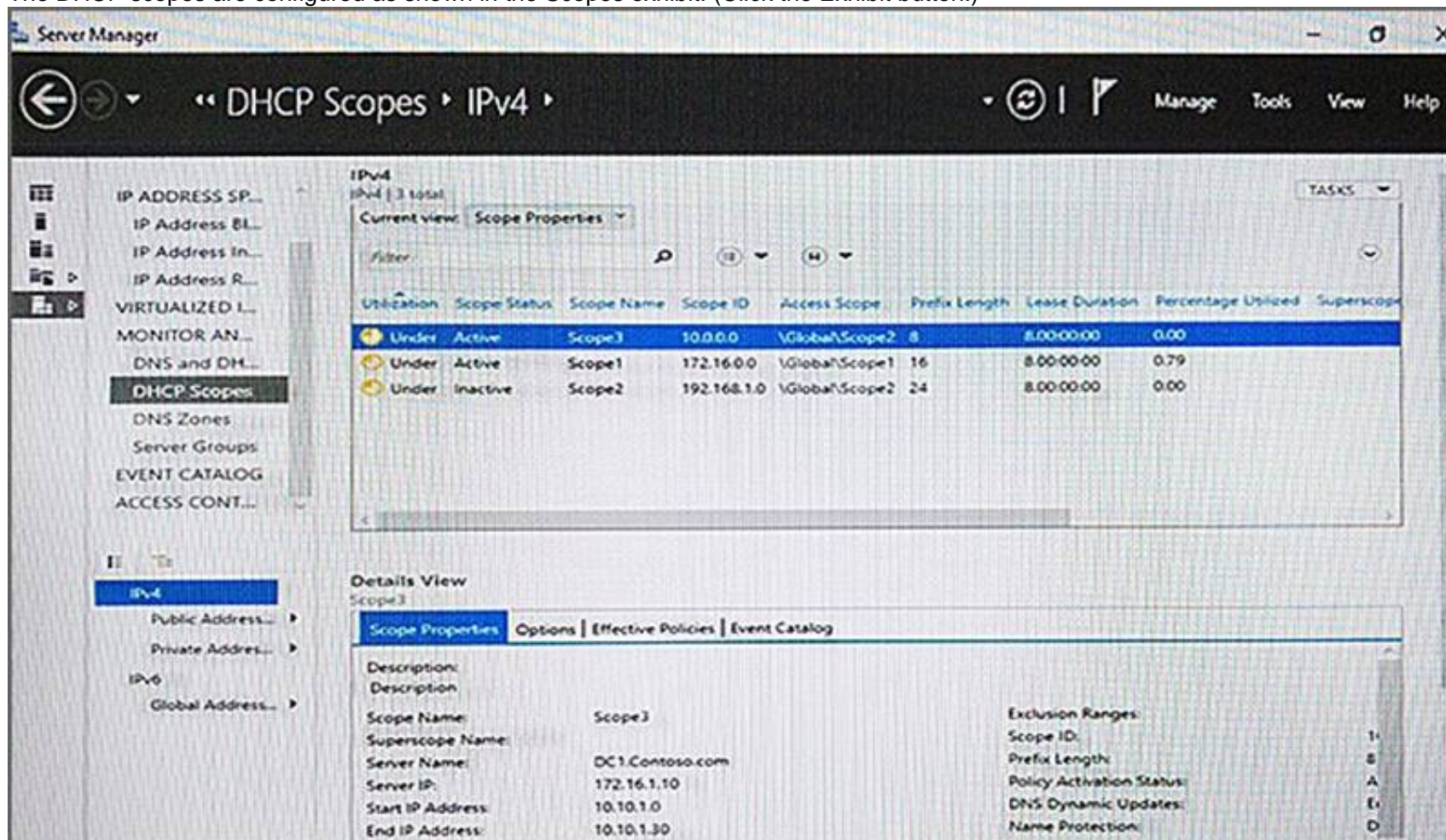
NEW QUESTION 280

Your network contains an Active Directory domain named contoso.com. The domain contains two servers named Server1 and Server2 that run Windows Server

2016.
Server1 has IP Address Management (IPAM) installed. Server2 has the DHCP Server role installed. The IPAM server retrieves data from Server2. The domain has two users named User1 and User2 and a group named Group1. User1 is the only member of Group1. Server1 has one IPAM access policy. You edit the access policy as shown in the Policy exhibit. (Click the Exhibit button.)



The DHCP scopes are configured as shown in the Scopes exhibit. (Click the Exhibit button.)



For each of the following statements, select Yes if the statement is true. Otherwise, select No.

Answer Area

Statements	Yes	No
User1 can modify the description of Scope1.	<input type="radio"/>	<input type="radio"/>
User2 can modify the description of Scope1.	<input type="radio"/>	<input type="radio"/>
User1 can modify the description of Scope2.	<input type="radio"/>	<input type="radio"/>

Answer:

Explanation:

Answer Area

Statements	Yes	No
User1 can modify the description of Scope1.	<input checked="" type="radio"/>	<input type="radio"/>
User2 can modify the description of Scope1.	<input type="radio"/>	<input checked="" type="radio"/>
User1 can modify the description of Scope2.	<input type="radio"/>	<input checked="" type="radio"/>

NEW QUESTION 283

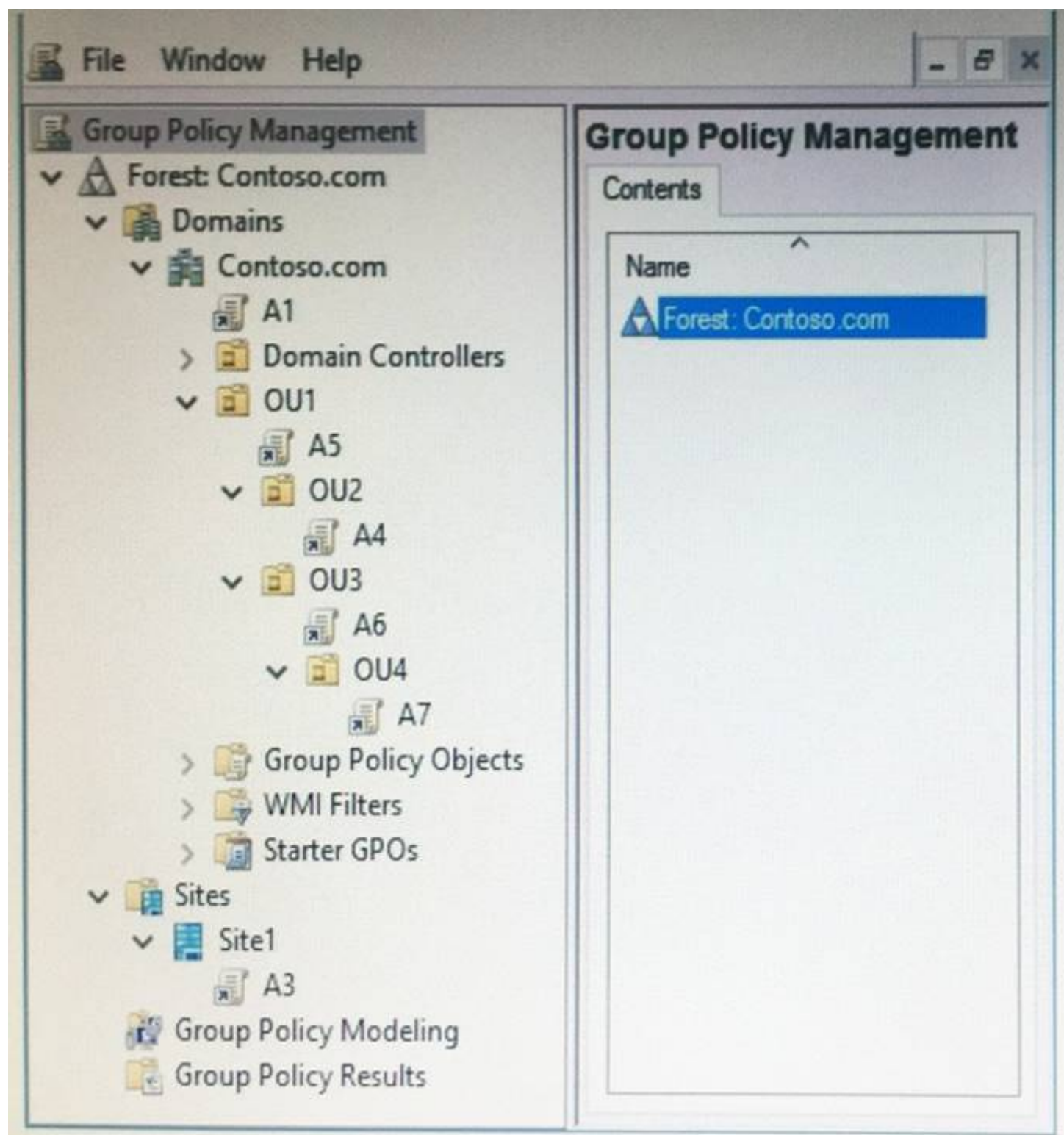
Your network contains two Active Directory forests named fabrikam.com and contoso.com. Each forest contains a single domain. Contoso.com has a Group Policy object (GPO) named Cont_GPO1. You need to apply the settings from Cont_GPO1 to the computers in fabrikam.com. Which two actions should you perform? Each correct answer presents part of the solution. NOTE: Each correct selection is worth one point.

- A. Back up Cont_GPO1. In fabrikam.com, create and link a new GPO by using the Group Policy Management Console (GPMC), and then run the Import Setting Wizard.
- B. Back up Cont_GPO1. In fabrikam.com, run the Restore-GPO cmdlet, and then run the New-GPLinkcmdlet.
- C. Back up Cont_GPO1. In fabrikam.com run the Import-GPO cmdlet, and then run the New-GPLinkcmdlet.
- D. Copy\\contoso.com\SysVol\contoso.com\Policies to \\fabrikam.com\SysVol\ fabrikam.com\Policie
- E. In fabrikam.com, run the New-GPLink cmdlet.
- F. Back up Cont_GPO1. In fabrikam.com, create and link a new GPO by using the Group Policy Management Console (GPMC), and then run the Restore Group Policy Object Wizard.

Answer: AC

NEW QUESTION 284

Note: This question is part of a series of questions that use the same scenario. For your convenience, the scenario is repeated in each question. Each question presents a different goal and answer choices, but the text of the scenario is exactly the same in each question in this series.
Start of repeated scenario.
Your network contains an Active Directory domain named contoso.com. The domain contains a single site named Site1. All computers are in Site1. The Group Policy objects (GPOs) for the domain are configured as shown in the exhibit. (Click the Exhibit button.)



The relevant users and client computer in the domain are configured as shown in the following table.

Object name	Object type	Object location
Computer	Computer	OU4
User1	User	OU4
User2	User	OU2

End of repeated scenario.

You are evaluating what will occur when you remove the Authenticated Users group from the Security Filtering settings of A5. Which GPO or GPOs will apply to User1 when the user signs in to Computer1 after Security Filtering is configured?

- A. A1 and A7 only
- B. A3 and A1 only.
- C. A3, A1, A6 and A7
- D. A7 only

Answer: A

NEW QUESTION 286

Your network contains an Active Directory domain named contoso.com. The domain contains a user named User1, a group named Group1, and an organizational unit (OU) named OU1.

You need to enable User1 to link Group Policies to OU1.

Solution: From Active Directory Administrative Center, you add User1 to Group1 and grant Group1 Full Control permission to OU1.

Does this meet the goal?

- A. Yes
- B. No

Answer: A

NEW QUESTION 290

Your network contains an Active Directory domain named contoso.com. The domain contains a user named User1, a group named Group1, and an organizational unit (OU) named OU1.

You need to enable user1 to link Group Policies to OU1.

Solution: From Active Directory Users and Computers, you add User1 to the Group Policy Creator owners group.
Does this meet the goal?

- A. Yes
- B. NO

Answer: AB

Explanation: <http://www.itprotoday.com/management-mobility/what-group-policy-creator-owners-group>

NEW QUESTION 294

Your network contains an Active Directory domain.

Users do not have administrative privileges to their client computer. You modify a computer setting in a Group Policy object (GPO).

You need to ensure that the setting is applied to five client computers as soon as possible. What should you do?

- A. From a domain controller, run the gpupdate.exe command and specify the Force parameter.
- B. From each client computer, run the gprestart.exe command and specify the /r parameter.
- C. From each client computer, run the Get-Gpo cmdlet and specify the -alt parameter.
- D. From a domain controller, run the Invoke-GPUUpdate cmdlet.

Answer: D

Explanation: [https://technet.microsoft.com/en-us/library/hh852337\(v=ws.11\).aspx](https://technet.microsoft.com/en-us/library/hh852337(v=ws.11).aspx)

NEW QUESTION 297

You have a Nano Server named Nano1 that runs Windows Server 2016. Nano1 is deployed to a virtual machine and is a member of a workgroup.

You need to join Nano1 to a domain named contoso.com.

Which two commands should you run? To answer, select the appropriate options in the answer area. NOTE: Each correct selection is worth one point.

First command to run:

- Add-Computer with the DomainName parameter
- Djoin.exe with the Provision parameter
- Netdom.exe with the JOIN parameter
- New-NanoServerImage with the DomainName parameter
- Nltest.exe with the SC_RESET parameter

Second command to run:

- Dism.exe with the Commit-Image parameter
- Djoin.exe with the RequestODJ parameter
- Restart-Computer with the Force parameter
- Shutdown.exe with the r parameter

Answer:

Explanation:

First command to run:

- Add-Computer with the DomainName parameter
- Djoin.exe with the Provision parameter
- Netdom.exe with the JOIN parameter
- New-NanoServerImage with the DomainName parameter
- Nltest.exe with the SC_RESET parameter

Second command to run:

- Dism.exe with the Commit-Image parameter
- Djoin.exe with the RequestODJ parameter
- Restart-Computer with the Force parameter
- Shutdown.exe with the r parameter

NEW QUESTION 298

Your network contains a single-domain Active Directory forest named contoso.com. The forest functional level is Windows Server 2016. The forest has Dynamic Access Control enabled.

The domain contains two domain controllers named DC1 and DC2. Privileged user accounts used to manage Active Directory reside in a group named ContosoAD_Admins.

You create an authentication policy named Policy1 and an authentication policy silo named Silo1.

You need to ensure that the accounts in the Contoso\AD-Admins group can sign in to the domain controllers only.

Which three configurations should you perform? Each correct answer presents part of the solution.

- A. Create an access control condition in Policy1.
- B. Create a managed service account and add the account to Permitted Accounts in Silo1.
- C. Add the domain controllers to the Contoso\AD_Admins group.
- D. Add the privileged user accounts and the domain controllers to Permitted Accounts in Silo1.
- E. Assign Silo1 to the privileged user accounts and the domain controllers.

Answer: ADE

NEW QUESTION 302

Your network contains an Active Directory domain named contoso.com. You deploy a standalone root certification authority (CA) named CA1.

You need to auto enroll domain computers for certificates by using a custom certificate template. What should you do first?

- A. Modify the Policy Module for CA1.
- B. Modify the Exit Module for CA1.
- C. Install a standalone subordinate CA.
- D. Install an enterprise subordinate CA.

Answer: D

Explanation: You can't create templates or configure auto-enrollment on a standalone CA.

NEW QUESTION 303

Your network contains an Active Directory domain named contoso.com. The domain contains two servers named Server1 and Server2 that run Windows Server 2016.

Server1 has IP Address Management (IPAM) installed. Server2 has Microsoft System Center 2016 Virtual Machine Manager (VMM) installed.

You need to integrate IPAM and VMM.

Which types of objects should you create on each server? To answer, drag the appropriate object types to the correct servers. Each object type may be used once, more than once, or not at all. You may need to drag the split bar between panes or scroll to view content.

Objects

Access Policy	Network Service
Run As Account	Service Template
User Role	

Answer Area

Server1:	Object	
Server2:	Object	Object

Answer:

Explanation: Server 1 (IPAM): Access Policy

VMM must be granted permission to view and modify IP address space in IPAM, and to perform remote management of the IPAM server. VMM uses a "Run As" account to provide these permissions to the IPAM network service plugin. The "Run As" account must be configured with appropriate permission on the IPAM server.

To assign permissions to the VMM user account

In the IPAM server console, in the upper navigation pane, click ACCESS CONTROL, right-click Access Policies in the lower navigation pane, and then click Add AccessPolicy.

Etc.

Server 2 (VMM) #1: Network Service Server 2 (VMM) #2: Run As Account

Perform the following procedure using the System Center VMM console. To configure VMM (see step 1-3, step 6-7)

Create Run As Account

Provide the details for this Run As account

Name: VMM User

Description: This domain account is used exclusively by this instance of VMM to integrate with the IPAM server IPAM1.contoso.com.

User name: contoso\vmuser
Example: contoso\domainuser or localuser

Password: ●●●●●●●●

Confirm password: ●●●●●●●●

☒ Validate domain credentials

View Script OK Cancel

Etc.

References: [https://technet.microsoft.com/en-us/library/dn783349\(v=ws.11\).aspx](https://technet.microsoft.com/en-us/library/dn783349(v=ws.11).aspx)

NEW QUESTION 304

You have an enterprise certification authority (CA) named ContosoCA. Recovery agents are configured for ContosoCA.

You duplicate the User certificate template and name it Cont_User. You plan to issue the certificates based on Cont_User to provide users with the ability to encrypt email messages and files.

You need to ensure that the recovery agents can access any user-encrypted files and email messages if the users lose their certificate.

What should you do?

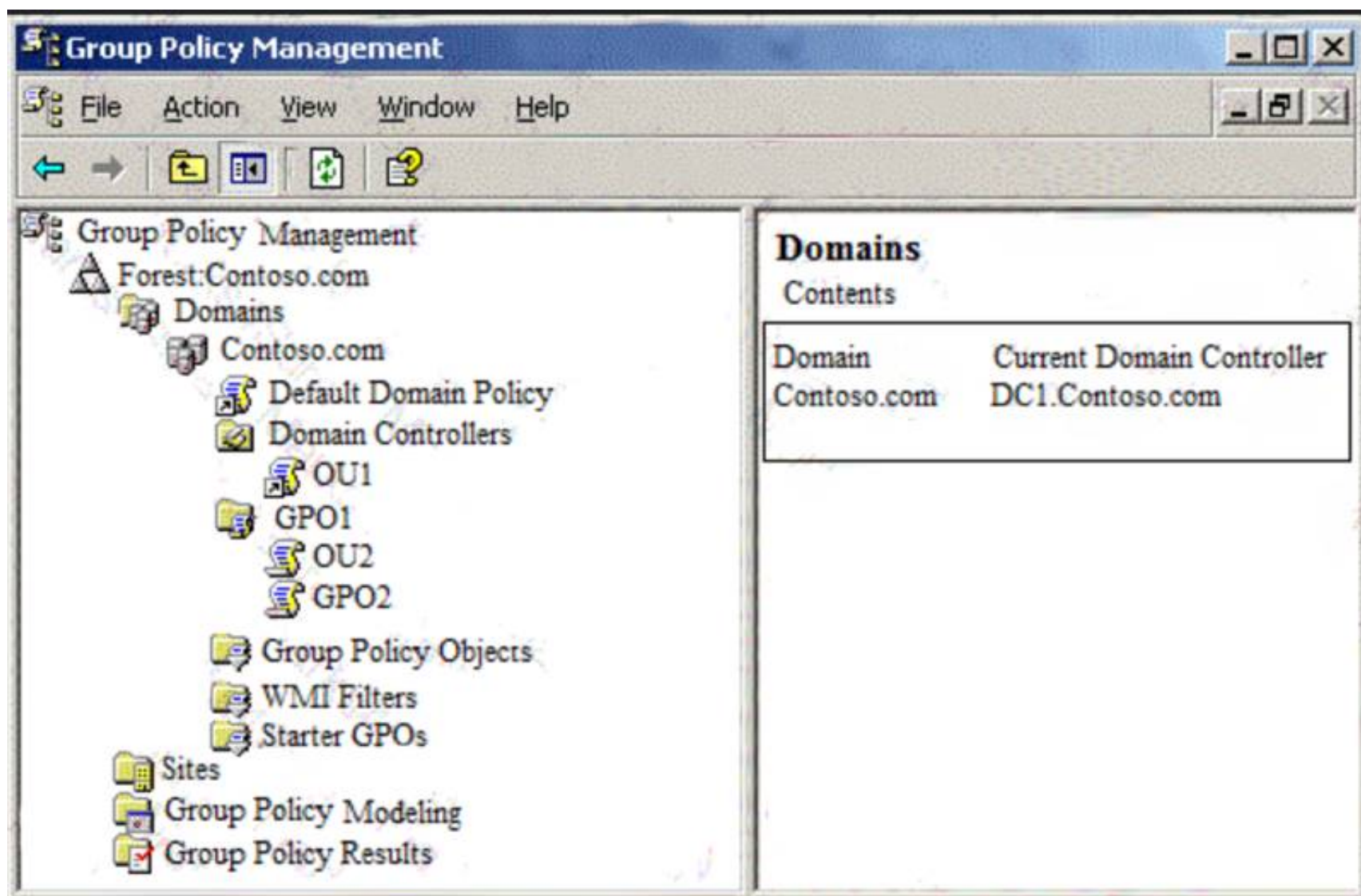
- A. Issue a certificate based on a key recovery agent certificate.
- B. Modify the Recovery Agents settings for ContosoCA.
- C. Modify the Request Handling settings for Cont_User.
- D. On ContosoCA, configure the Key Recovery Agent template as a certificate template to issue.

Answer: C

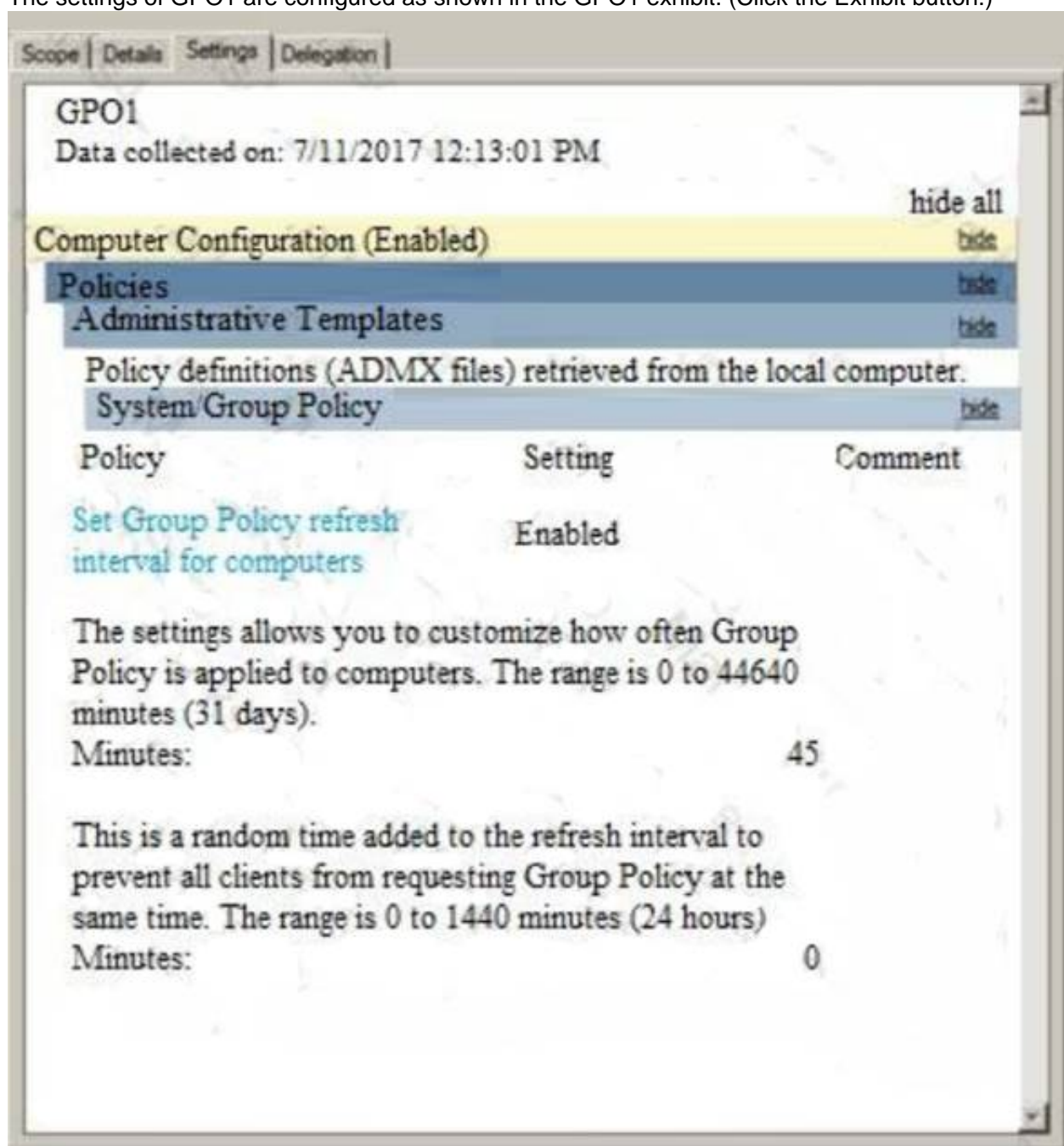
NEW QUESTION 309

Your network contains an Active Directory domain named contoso.com.

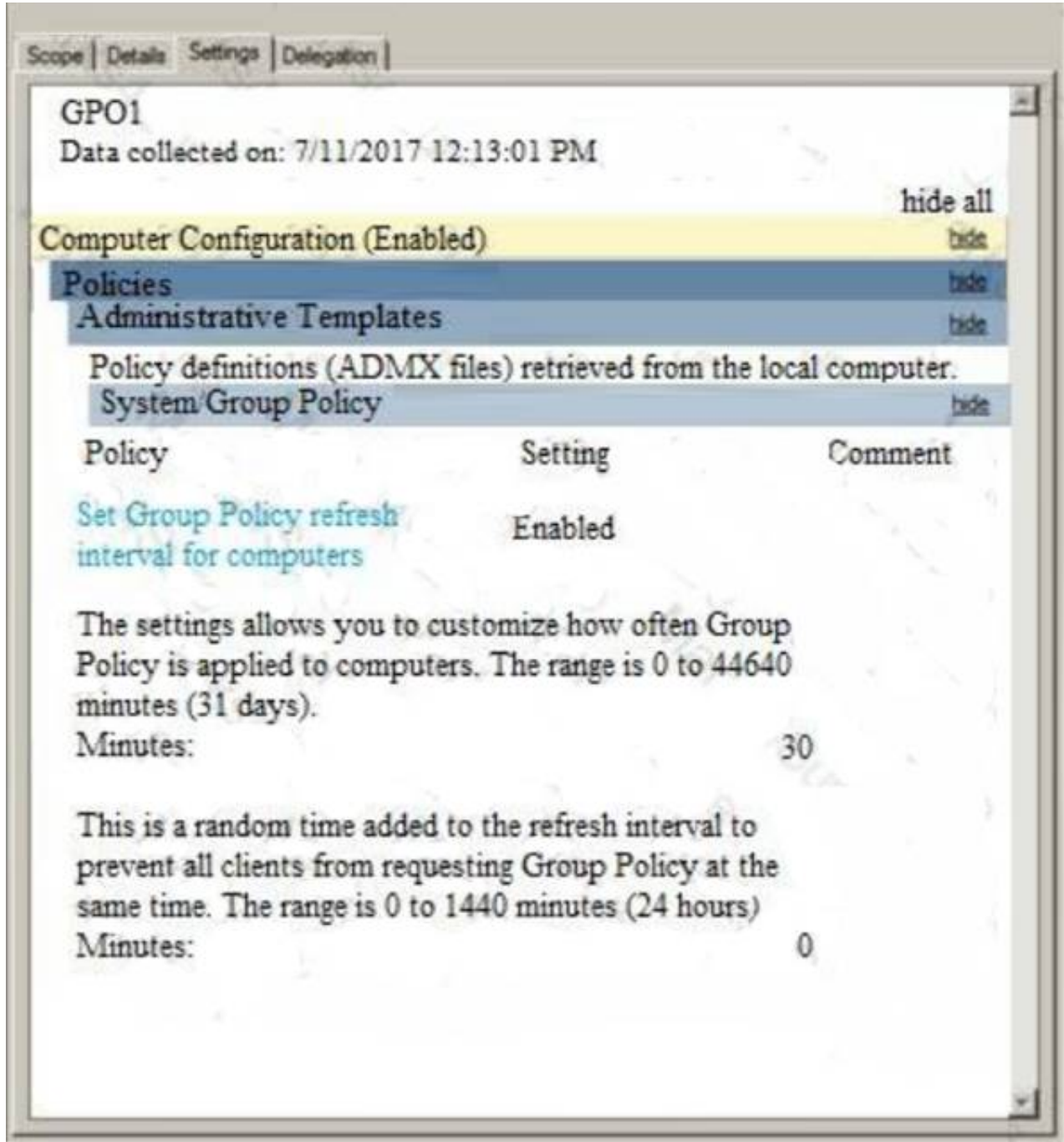
You open Group Policy Management as shown in the Group Policy Management exhibit. (Click the Exhibit button.)



A user named User1 is in OU1. A computer named Computer2 is in OU2.
The settings of GPO1 are configured as shown in the GPO1 exhibit. (Click the Exhibit button.)



The settings of GPO2 are configured as shown in the GPO2 exhibit. (Click the Exhibit button.)



For each of the following statements, select Yes if the statement is true. Otherwise, select No. NOTE: Each correct selection is worth one point.

Answer Area

Statements	Yes	No
User1 signs in to Computer2. The user Group Policy settings will refresh every 45 minutes.	<input type="radio"/>	<input type="radio"/>
User1 signs in to Computer2. The computer Group Policy will refresh every 30 minutes.	<input type="radio"/>	<input type="radio"/>
Contoso/Administrator signs in to Computer2. The user group Policy settings will refresh every 45 minutes.	<input type="radio"/>	<input type="radio"/>

Answer:

Explanation:

Answer Area

Statements	Yes	No
User1 signs in to Computer2. The user Group Policy settings will refresh every 45 minutes.	<input type="radio"/>	<input checked="" type="radio"/>
User1 signs in to Computer2. The computer Group Policy will refresh every 30 minutes.	<input checked="" type="radio"/>	<input type="radio"/>
Contoso/Administrator signs in to Computer2. The user group Policy settings will refresh every 45 minutes.	<input type="radio"/>	<input checked="" type="radio"/>

NEW QUESTION 310

Your network contains an Active Directory domain named contoso.com.

All the accounts of the users in the sales department are in an organizational unit (OU) named SalesOU. An application named App1 is deployed to the user accounts in SalesOU by using a Group Policy object (GPO) named SalesGPO. You need to set the registry value of \HKEY_CURRENT_USER\Software\App1\Collaboration to 0.

Solution: You add a user preference that has an Replace action. Does this meet the goal?

- A. Yes
- B. No

Answer: A

Explanation: [https://technet.microsoft.com/en-us/library/cc753092\(v=ws.11\).aspx](https://technet.microsoft.com/en-us/library/cc753092(v=ws.11).aspx)

NEW QUESTION 311

Your network contains an Active Directory domain. The domain contains an organizational unit (OU) named FileServersOU. A Group Policy object (GPO) named GPO1 is linked to FileServersOU. FileServersOU contains all the file servers in the domain.

You make an urgent security edit to GPO1.

You need to ensure that all the file servers receive the updated setting as soon as possible. What should you do?

- A. Right-click FileServersOU and click Group Policy Update...
- B. Right-click the GPO link for GPO1 and click Enforced.
- C. Right-click Group Policy Results and click Group Policy Results Wizard...
- D. Right-click FileServersOU and click Refresh.

Answer: A

NEW QUESTION 312

You have an internal web server that hosts websites. The websites use HTTP and HTTPS. You deploy a Web Application Proxy to your perimeter network.

You need to ensure that users from the Internet can access the websites by using HTTPS only. Internet access to the websites must use the Web Application Proxy.

Which two actions should you perform? Each correct answer presents part of the solution.

NOTE: Each correct selection is worth one point.

- A. From the Remote Access Management Console, publish the website
- B. Configure pass-through authentication and select Enable HTTP to HTTPS redirection.
- C. Configure the Web Application Proxy to perform preauthentication by using OAuth2.
- D. On external DNS name servers, create DNS entries that point to the private IP address of the web server.
- E. From the web server, enable HTTP Redirect on the Web Application Proxy server.
- F. On external DNS name servers, create DNS entries that point to the public IP address of the Web Application Proxy.

Answer: AE

NEW QUESTION 314

You have a standalone root certification authority (CA).

You have a new security policy requirement specifying that any changes to the CA configuration must be logged.

You need to ensure that the CA meets the new security requirement.

Which two actions should you perform? Each correct answer presents part of the solution.

- A. From Local Group Policy Editor, configure auditing for policy change.
- B. From Local Group Policy Editor, configure auditing for object access.
- C. From the Certification Authority console, modify the Security settings for the CA.
- D. From the Certification Authority console, modify the Auditing settings for the CA.
- E. From the Certification Authority console, modify the Certificate Managers settings for the CA.

Answer: AE

NEW QUESTION 315

Your network contains an Active Directory domain named contoso.com. The domain contains two servers named Server1 and Server2 that run Windows Server 2016. The computer accounts of Server1 and Server2 are in the Computers container.

A Group Policy object (GPO) named GPO1 is linked to the domain. GPO1 has multiple computer settings defined and has following the configurations.

DisplayName	: GPO1
DomainName	: Contoso.com
Owner	: CONTOSO\Domain Admins
Id	: bf3b4d96-59f6-4d0f-84c3-b9c37180b9ca
GpoStatus	: UserSettingsDisabled
Description	:
CreationTime	: 2/18/2017 7:11:30 AM
ModificationTime	: 2/18/2017 9:33:04 AM
UserVersion	: AD Version: 18, SysVol Version: 18
ComputerVersion	: AD Version: 6, SysVol Version: 6
WmiFilter	: WMI1

An administrator discovers that GPO1 is not applied to Server1. GPO1 is applied to Server2. Which configuration possibly prevents GPO1 from being applied to Server1?

- A. the permissions on the computer object of Server1
- B. the permissions on GPO1
- C. the loopback processing mode in GPO1
- D. the permissions on the Computers container

Answer: B

NEW QUESTION 319

Note: This question is part of a series of questions that use the same or similar answer choices. An answer choice may be correct for more than one question in the series. Each question is independent of the other questions in this series. Information and details provided in a question apply only to that question.

Your network contains an Active Directory domain named contoso.com. The domain contains a domain controller named DC1 that runs Windows Server 2016.

You need to create a snapshot of the Active Directory database on DC1. Which tool should you use?

- A. Dsadd quota
- B. Dsmod
- C. Active Directory Administrative Center
- D. Dsacls
- E. Dsmain
- F. Active Directory Users and Computers
- G. Ntdsutil
- H. Group Policy Management Console

Answer: E

NEW QUESTION 323

You have an offline root certification authority (CA) named CA1. CA1 is hosted on a virtual machine. You only turn on CA1 when the CA must be patched or you must generate a key for subordinate CAs. You start CA1, and you discover that the filesystem is corrupted.

You resolve the filesystem corruption and discover that you must reload the CA root from a backup.

When you attempt to run the Restore-CARoleService cmdlet, you receive the following error message: "The process cannot access the file because it is being used by another process."

- A. Stop the Active Directory Domain Services (AD DS) service.
- B. Run the Restore-CARoleService cmdlet and specify the path to a valid CA key.
- C. Stop the Active Directory Certificate Services (AD CS) service.
- D. Run the Restore-CARoleService cmdlet and specify the Force parameter.

Answer: C

NEW QUESTION 324

Your network contains an Active Directory domain named contoso.com. All the accounts of the users in the sales department are in an organizational unit (OU) named SalesOU.

An application named App1 is deployed to the user accounts in SalesOU by using a Group Policy object (GPO) named Sales GPO.

You need to set the registry value of \HKEY_CURRENT_USER\Software\App1\Collaboration to 0. Solution: You add a computer preference that has a Create action.

Does this meet the goal?

- A. Yes
- B. NO

Answer: B

NEW QUESTION 329

Note: This question is part of a series of questions that present the same scenario. Each question in the series contains a unique solution that might meet the stated goals. Some question sets might have more than one correct solution, while others might not have a correct solution.

After you answer a question in this section, you will NOT be able to return to it. As a result, these questions will not appear in the review screen.

Your network contains an Active Directory domain named contoso.com. The domain contains two domain controllers named DC1 and DC2.

DC1 holds the RID master operations role. DC1 fails and cannot be repaired. You need to move the RID role to DC2.

Solution: On DC2, you open Active Directory Users and Computers, click Operations Masters..., verify that dc2.contoso.com is listed on the RID tab, and click Change.

Does this meet the goal?

- A. Yes
- B. No

Answer: B

Explanation: This would work if DC1 was still online. In that case we would be “transferring” the role. However, as DC1 is offline, we need to “seize” the role which can only be done by using the ntdsutil command or the Move-AddirectoryServerOperationMasterRole PowerShell cmdlet with the -Force parameter.

NEW QUESTION 333

Your network contains an Active Directory forest named contoso.com. You need to add a new domain named fabrikam.com to the forest.

What command should you run? To answer, select the appropriate options in the answer area.

Answer Area

<div><div></div><div>Install-ADDSDomain</div><div>Install-ADDSDomainController</div><div>Install-ADDSEForest</div></div>	-DomainType	<div><div></div><div>TreeDomain</div><div>ChildDomain</div></div>
--	-------------	---

`-InstallDns:$true -NewDomainName fabrikam.com -ParentDomainName contoso.com`

Answer:

Explanation: References:

[https://technet.microsoft.com/en-us/library/hh974722\(v=wps.630\).aspx](https://technet.microsoft.com/en-us/library/hh974722(v=wps.630).aspx)

NEW QUESTION 338

Note: This question is part of a series of questions that present the same scenario. Each question in the series contains a unique solution that might meet the stated goals. Some question sets might have more than one correct solution, while others might not have a correct solution.

After you answer a question in this section, you will NOT be able to return to it. As a result, these questions will not appear in the review screen.

Your network contains an Active Directory domain named contoso.com. The domain contains a server named Server1 that runs Windows Server 2016. The Computer account for Server1 is in organizational unit (OU) named OU1.

You create a Group Policy object (GPO) named GPO1 and link GPO1 to OU1.

You need to add a domain user named user1 to the local Administrators group on Server1.

Solution: From the Computer Configuration node of GPO1, you configure the Restricted Groups settings. Does this meet the goal?

- A. Yes
- B. No

Answer: B

NEW QUESTION 342

Your network contains an Active Directory domain named contoso.com. The domain contains a server named Server1 that runs Windows Server 2016.

Server1 has IP Address Management (IPAM) installed. IPAM is configured to use the Group Policy based provisioning method. The prefix for the IPAM Group Policy objects (GPOs) is IP.

From Group Policy Management, you manually rename the IPAM GPOs to have a prefix of IPAM. You need to modify the GPO prefix used by IPAM.

What should you do?

- A. Click Configure server discovery in Server Manager.
- B. Run the Set-IpamConfiguration cmdlet.
- C. Run the Invoke-IpamGpoProvisioning cmdlet.
- D. Click Provision the IPAM server in Server Manager.

Answer: B

Explanation: The Set-IpamConfiguration cmdlet modifies the configuration for the computer that runs the IPAM server. The -GpoPrefix<String> parameter specifies the unique Group Policy object (GPO) prefix name that IPAM uses to create the group policy objects. Use this parameter only when the value of the ProvisioningMethod parameter is set to Automatic.
References: <https://technet.microsoft.com/en-us/library/jj590816.aspx>

NEW QUESTION 347

Your network contains an Active Directory forest. The forest contains two domains named litwarenc.com and contoso.com. The contoso.com domain contains two domain controllers named LON-DC01 and LON-DC02. The domain controllers are located in a site named London that is associated to a subnet of 192.168.10.0/24

You discover that LON-DC02 is not a global catalog server. You need to configure LON-DC02 as a global catalog server. What should you do?

- A. From Active Directory Sites and Services, modify the properties of the 192.168.10.0/24 IP subnet.
- B. From Windows PowerShell, run the Set-NetNatGlobal cmdlet.
- C. From Active Directory Sites and Services, modify the NTDS Settings object of LON-DC02.
- D. From Windows PowerShell, run the Enable-ADOptionalFeature cmdlet.

Answer: C

NEW QUESTION 348

Your network contains an Active Directory domain named contoso.com. The domain contains an administrative workstation named WKS1 that runs Windows 10. You have a Group Policy object (GPO) named GPO1.

You download a custom administrative template that contains the following files:

You need to ensure that you can configure GPO1 by using the settings in the new administrative template. To where should you copy each file? To answer, select the appropriate options in the answer area.

NOTE: Each correct selection is worth one point.

Answer Area

App1.adml:

	▼
C:\Windows\PolicyDefinitions	
C:\Windows\PolicyDefinitions\en-US	
C:\Windows\System32\Configuration	
C:\Windows\System32\en-US	

App1.admx:

	▼
C:\Windows\PolicyDefinitions	
C:\Windows\PolicyDefinitions\en-US	
C:\Windows\System32\Configuration	
C:\Windows\System32\en-US	

Answer:

Explanation: References:

<https://support.microsoft.com/en-us/help/918239/how-to-write-custom-adm-and-admx-administrative-template-f>

NEW QUESTION 353

Your network contains an Active Directory domain named contoso.com. The domain contains two servers named Server1 and Server2 that run Windows Server 2016.

Server1 has IP Address Management (IPAM) installed. Server2 has the DHCP Server role installed. The IPAM server retrieves data from Server2.

You create a domain user account named User1.

You need to ensure that User1 can use IPAM to manage DHCP.

Which command should you run on Server1? To answer, select the appropriate options in the answer area.

Answer Area

net localgroup	▼
Set-AdGroup	

▼
"Server1\IPAM IP Audit Administrators"
"Server1\IPAM IP Users"
"Server1\IPAM MSM Administrators"
"Server2\Administrators"
"Server2\DHCP Administtrators"

User1 /add

Answer:

Explanation:

Answer Area

net localgroup	▼
Set-AdGroup	

▼
"Server1\IPAM IP Audit Administrators"
"Server1\IPAM IP Users"
"Server1\IPAM MSM Administrators"
"Server2\Administrators"
"Server2\DHCP Administtrators"

User1 /add

NEW QUESTION 356

Your network contains an Active Directory domain named contoso.com. All the accounts of the users in the sales department are in an organizational unit (OU) named SalesOU.

An application named App1 is deployed to the user accounts in SalesOU by using a Group Policy object (GPO) named Sales GPO.

You need to set the registry value of \HKEY_CURRENT_USER\Software\App1\Collaboration to 0. Solution: You add a computer preference that has a Replace action.

Does this meet the goal?

- A. Yes
- B. NO

Answer: A

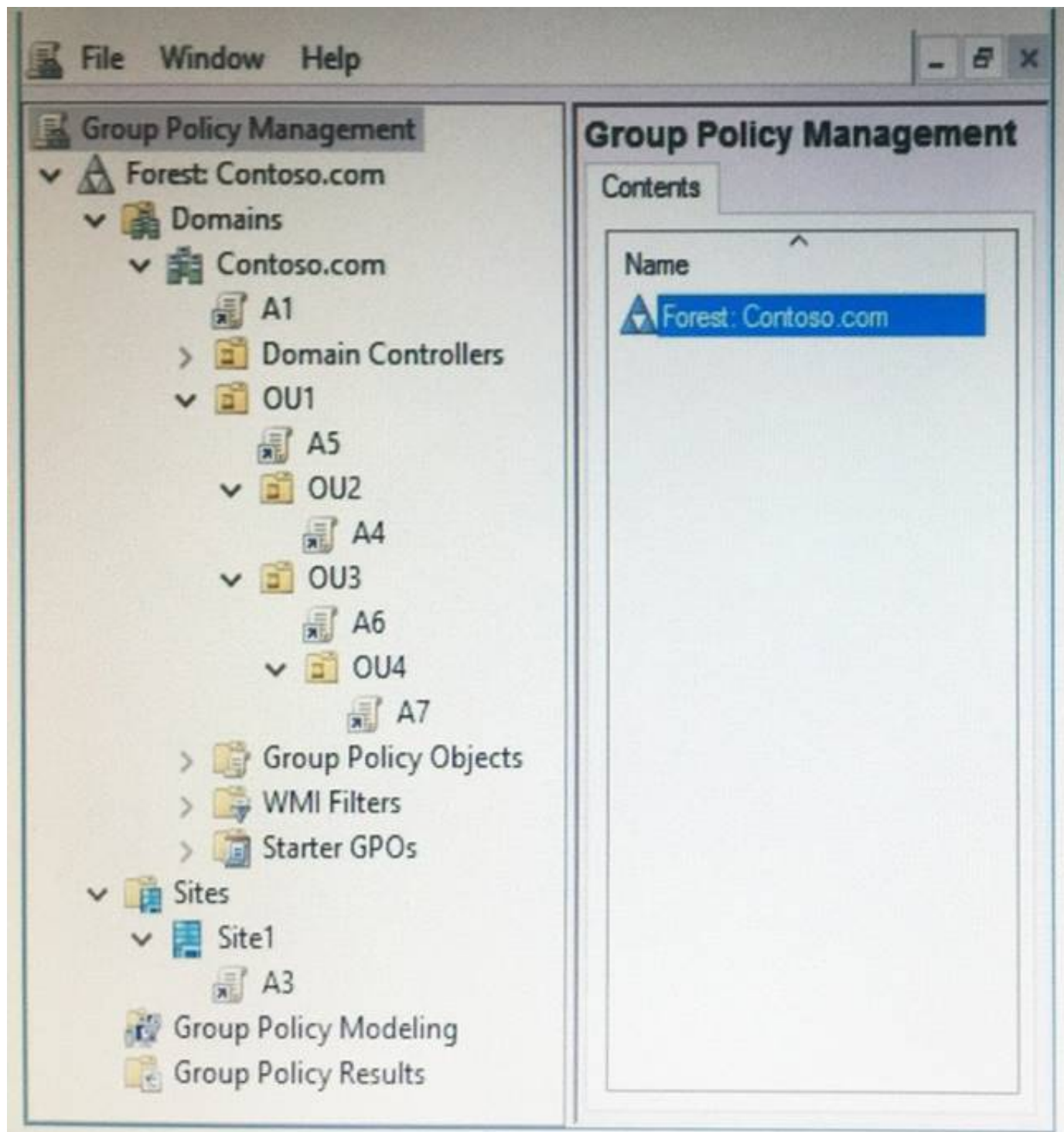
NEW QUESTION 360

Note: This question is part of a series of questions that use the same scenario. For your convenience, the scenario is repeated in each question. Each question presents a different goal and answer choices, but the text of the scenario is exactly the same in each question in this series.

Start of repeated scenario.

Your network contains an Active Directory domain named contoso.com. The domain contains a single site named Site1. All computers are in Site1.

The Group Policy objects (GPOs) for the domain are configured as shown in the exhibit. (Click the Exhibit button.)



The relevant users and client computer in the domain are configured as shown in the following table.

Object name	Object type	Object location
Computer	Computer	OU4
User1	User	OU4
User2	User	OU2

End of repeated scenario.

Which five GPOs will apply to User1 in sequence when the user signs in to Computer1? To answer, move the appropriate GPOs from the list to the answer area and arrange them in the correct order.

GPOs

Answer Area

A1

A3

A4

A5

A6

A7

Answer:

Explanation:

GPOs	Answer Area
A1	A3
A3	A1
A4	A5
A5	A6
A6	A7
A7	

NEW QUESTION 365
.....

Thank You for Trying Our Product

* 100% Pass or Money Back

All our products come with a 90-day Money Back Guarantee.

* One year free update

You can enjoy free update one year. 24x7 online support.

* Trusted by Millions

We currently serve more than 30,000,000 customers.

* Shop Securely

All transactions are protected by VeriSign!

100% Pass Your 70-742 Exam with Our Prep Materials Via below:

<https://www.certleader.com/70-742-dumps.html>