



Microsoft

Exam Questions 98-349

Windows Operating System Fundamentals

NEW QUESTION 1

- (Exam Topic 1)

Which Windows feature will allow you to run automated scripts on a remote computer?

- A. Windows Remote Management
- B. Remote Access Services
- C. Remote Desktop Connection
- D. Virtual Private Network

Answer: A

NEW QUESTION 2

- (Exam Topic 1)

Which describes the purpose of Power Saver mode for a portable computer?

- A. To lock the computer when it is idle
- B. To prevent unauthorized programs from consuming resources
- C. To protect the display from burned-in images
- D. To shut down idle devices to conserve battery charge

Answer: D

NEW QUESTION 3

- (Exam Topic 1)

The Remote Desktop Connection is used to:

- A. search the Internet.
- B. attend a webinar.
- C. access another personal computer.
- D. conduct a Lync Online Meeting.

Answer: C

NEW QUESTION 4

- (Exam Topic 1)

You need to configure a mouse for a left-handed user. What should you do?

- A. Configure alternate input devices.
- B. Use Device Manager to modify settings in the Mouse Properties dialog box.
- C. Use Control Panel to modify settings in the Mouse Properties dialog box.
- D. Use the manufacturer's website to update the mouse driver.

Answer: C

NEW QUESTION 5

- (Exam Topic 1)

Which is the largest single file that you can store on a FAT32 file system?

- A. 4GB
- B. 8GB
- C. 16GB
- D. 32GB

Answer: A

NEW QUESTION 6

- (Exam Topic 1)

Which Windows component should you use to make a copy of all files on your computer?

- A. Disk Cleanup
- B. System Image Backup
- C. System Restore
- D. Disk Management

Answer: B

NEW QUESTION 7

- (Exam Topic 1)

Which feature should you use to install the most recent definitions for Windows Defender?

- A. Windows Update
- B. Sync Center
- C. Windows Installer
- D. Programs and Features

Answer: A

NEW QUESTION 8

- (Exam Topic 1)

Which two editions of Windows 7 support Windows XP mode? (Each correct answer presents a complete solution. Choose two.)

- A. Home Premium
- B. Starter
- C. Ultimate
- D. Professional

Answer: CD

Explanation:

Using Windows XP Mode, you can run programs that were designed for Windows XP on computers running Windows 7 Professional, Enterprise, or Ultimate editions.

NEW QUESTION 9

- (Exam Topic 1)

Which two features are supported by the Infrared Data Association (IrDA) protocol? (Each correct answer presents a complete solution. Choose two.)

- A. Data can be transferred across short distances.
- B. One computer can control another computer through a wireless connection.
- C. Some features of another computer can be controlled by using a remote control unit.
- D. The computer can identify Bluetooth devices.

Answer: AC

NEW QUESTION 10

- (Exam Topic 1)

You need to find out the amount of physical memory available to Windows 7. Which command should you use?

- A. sysedit.exe
- B. msinfo32.exe
- C. msconfig.exe
- D. wmimgmt.msc

Answer: B

NEW QUESTION 10

- (Exam Topic 1)

A Windows service is a:

- A. Program or process that runs in the background and does not require user intervention.
- B. Hardware driver that provides support to a specific device.
- C. Program or process that runs in the foreground.
- D. Hardware driver that provides support to the operating system.

Answer: A

NEW QUESTION 13

- (Exam Topic 1)

The Encrypting File System (EFS) is a:

- A. Digital document that verifies the identity of a user.
- B. Specially made hard disk drive that requires a password.
- C. Sequence of characters used to encrypt and decrypt information stored in a folder.
- D. Feature that enables files to be stored in a secure format.

Answer: D

NEW QUESTION 15

- (Exam Topic 1)

The purpose of a Public folder is to:

- A. share files with only one person on a network.
- B. share files with everyone on a network.
- C. share files with a selected group of people on a network.
- D. back up files to a location on a network.

Answer: B

NEW QUESTION 19

- (Exam Topic 1)

You need to upgrade your computer from the FAT file system to an NTFS file system. What should you do?

- A. Use the Backup and Restore tool.
- B. Clear the hard disk drive by using the Format tool.
- C. Use the Convert C:/fs:ntfs command.
- D. Run the Windows Easy Transfer tool.

Answer: C

NEW QUESTION 24

- (Exam Topic 1)

The Windows 7 USB/DVD Download Tool allows you to:

- A. Create a bootable version of Windows 7 on a USB stick or a writable DVD.
- B. Create backups of data files from your computer to a USB stick or a writable DVD.
- C. Install Microsoft .NET Framework on a USB stick or a writable DVD.
- D. Download files from the Internet directly to a USB stick or a writable DVD.

Answer: A

NEW QUESTION 27

- (Exam Topic 1)

Which file system is designed for transfer of large files between a personal computer and flash devices?

- A. FAT16 file system
- B. FAT32 file system
- C. exFAT file system
- D. NTFS file system

Answer: C

NEW QUESTION 28

- (Exam Topic 1)

Which Windows feature allows secure printing over the Internet?

- A. Secure Transfer Protocol (STP)
- B. Internet Printing Protocol (IPP) by using HTTPS
- C. Voce over Internet Protocol (VoIP)
- D. Web2Print

Answer: B

NEW QUESTION 29

- (Exam Topic 1)

Which feature allows you to run applications hosted on network file servers or web servers?

- A. Windows Virtual PC
- B. Remote Desktop Connection
- C. Windows Installer
- D. Application Virtualization Client

Answer: D

NEW QUESTION 34

- (Exam Topic 1)

Your computer is slow to start, and file access in Windows is slow. Which Windows feature should you use to improve performance?

- A. System Restore
- B. windows Defender
- C. Disk Defragmenter
- D. Disk Format

Answer: C

NEW QUESTION 36

- (Exam Topic 1)

You want to connect to a wireless access point. You need to view a list of available networks.

Which two actions should you perform? (Each correct answer presents a complete solution. Choose two.)

- A. Click the network icon in the notification area.
- B. From Control Panel, use Windows Mobility Center.
- C. From Control Panel, use Network and Sharing Center.
- D. From Control Panel, use Sync Center.
- E. From Control Panel, use Ease of Access.

Answer: AC

NEW QUESTION 37

- (Exam Topic 1)

Which feature allows you to pause the printing of all documents waiting to print on a specific printer?

- A. The Print Setup page
- B. The printer's Properties page
- C. The printer's shortcut menu
- D. The Computer Management console

Answer: C

NEW QUESTION 41

- (Exam Topic 2)

You want to upgrade your computer from Windows 8.1 to Windows 10.

What is the minimum processor speed required to run a 64-bit version of Windows 10?

- A. 1.2 GHz
- B. 1.8 GHz
- C. 800 MHz
- D. 1.0 GHz

Answer: D

Explanation:

References:

<https://www.microsoft.com/en-gb/windows/windows-10-specifications>

NEW QUESTION 42

- (Exam Topic 2)

You want to share a document with everyone on your school network. Which Windows 7 feature should you use?

- A. Map Network Drive
- B. Public Folder
- C. Computer Management Console
- D. Documents Library

Answer: B

NEW QUESTION 44

- (Exam Topic 2)

This question requires that you evaluate the underlined text to determine if it is correct. By default, Windows 7 allows users with any user account to install manual updates.

Select the correct answer if the underlined text does not make the statement correct. Select "No change is needed" if the underlined text makes the statement correct.

- A. administrator user accounts
- B. standard user accounts
- C. guest user accounts
- D. No change is needed.

Answer: A

NEW QUESTION 49

- (Exam Topic 2)

This question requires that you evaluate the underlined text to determine if it is correct. You can set Windows to automatically install all updates through Windows Update.

Select the correct answer if the underlined text does not make the statement correct. Select "No change is needed" if the underlined text makes the statement correct.

- A. Important updates only
- B. Recommended updates only
- C. Optional updates only
- D. No change is needed

Answer: A

NEW QUESTION 53

- (Exam Topic 2)

You are an intern at a small company. You are learning how to run some of the system management tools from a command line.

You want to access Device Manager from a command prompt. Which command should you enter?

- A. devmgmt.cpl
- B. devmgmt.dll
- C. devmgmt.exe
- D. devmgmt.msc

Answer: D

Explanation:

References:[https://technet.microsoft.com/en-us/library/cc754081\(v=ws.11\).aspx](https://technet.microsoft.com/en-us/library/cc754081(v=ws.11).aspx)

NEW QUESTION 57

- (Exam Topic 2)

You are an intern at a large company that has various versions of Windows installed on desktops throughout the company. The Chief Information Officer (CIO) asks you to upgrade as many desktops as possible to Windows 10 Enterprise. Which two versions of Windows can be upgraded to Windows 10 Enterprise? (Choose two.)

- A. Windows 7 Ultimate
- B. Windows 8.1 Professional Windows Media Center edition
- C. Windows 8.1 Connected
- D. Windows 8 Core
- E. Windows 8.1 RT

Answer: AB

Explanation:

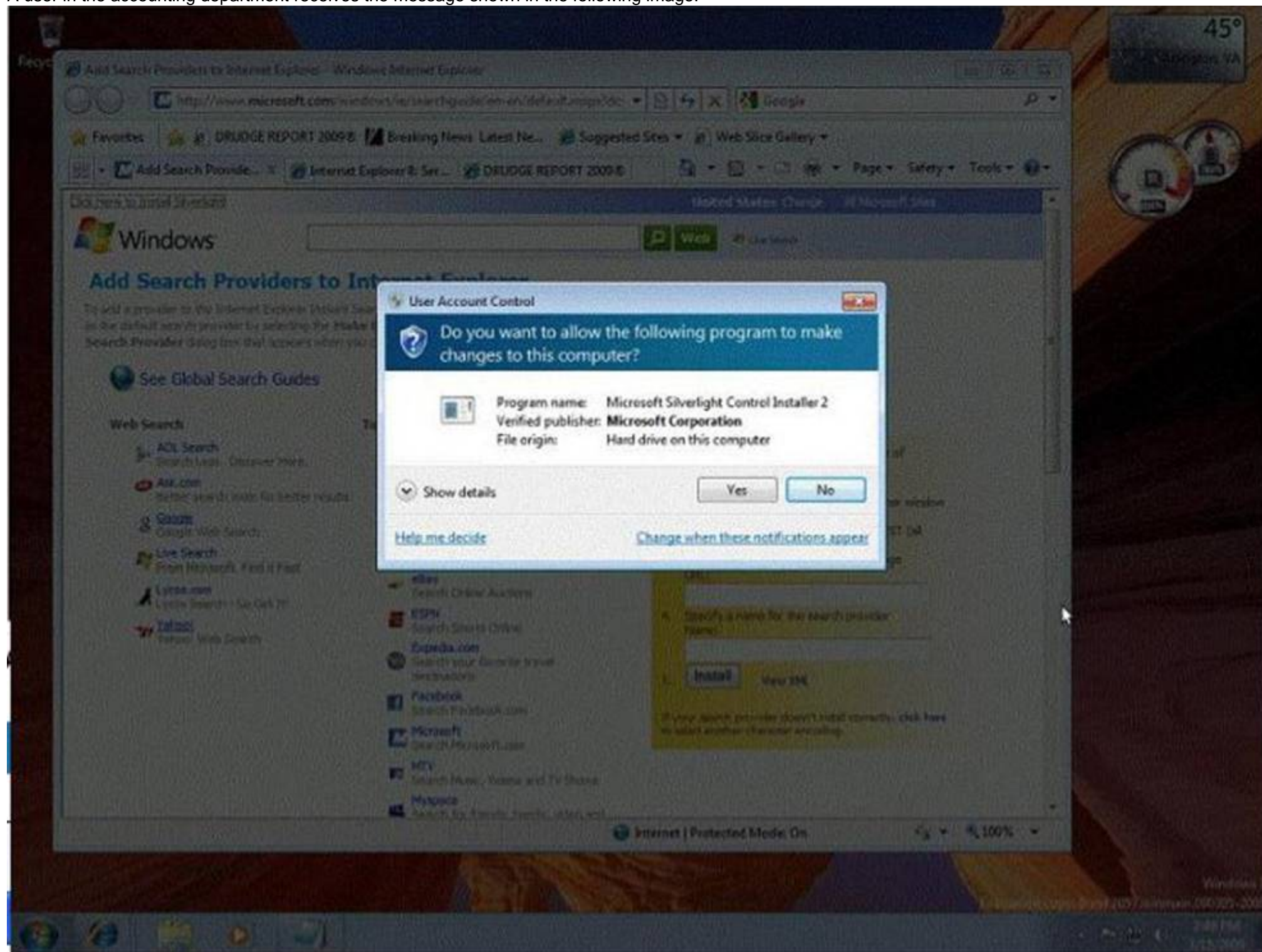
References:<https://docs.microsoft.com/en-us/windows/deployment/upgrade/windows-10-upgrade-paths>

NEW QUESTION 58

- (Exam Topic 2)

You are an IT intern for a nonprofit organization.

A user in the accounting department receives the message shown in the following image:



You need to explain the message to the user.

Use the drop-down menus to select the answer choice that completes each statement. Each correct selection is worth one point

Answer Area

The dimming of the background behind the dialog box indicates that the message is [answer choice]

The question mark icon in the dialog box means Windows believes there is a [answer choice] trying to install.

Answer Area

The dimming of the background behind the dialog box indicates that the message is [answer choice]

a virus trying to take over, on the secure desktop, initiated by a Windows component.

The question mark icon in the dialog box means Windows believes there is a [answer choice] trying to install.

malware application
digitally-signed application
digitally-unsigned application

- A. Mastered
- B. Not Mastered

Answer: A

Explanation:

Answer Area

The dimming of the background behind the dialog box indicates that the message is [answer choice]

a virus trying to take over, on the secure desktop, initiated by a Windows component.

The question mark icon in the dialog box means Windows believes there is a [answer choice] trying to install.

malware application
digitally-signed application
digitally-unsigned application

NEW QUESTION 61

- (Exam Topic 2)

You turn on your computer. You receive the following message: "System Disk Not Found." Which Windows feature should you use to restore your computer?

- A. Check Disk (Chkdsk)
- B. Last Known Good Configuration
- C. safe Mode
- D. Automated System Recovery

Answer: C

NEW QUESTION 66

- (Exam Topic 2)

Last time you turned on your computer, Windows started correctly. Now Windows starts but fails before the login prompt. What is the first step you should try to troubleshoot this problem?

- A. Restore a system image to the drive.
- B. Restart the computer, press F8, and select Last Known Good Configuration.
- C. Restart the computer, press F8, and select Safe Mode with Command Prompt.
- D. Restart the computer, press F8, and select Start Windows Normally.

Answer: D

NEW QUESTION 70

- (Exam Topic 2)

Which three methods can be used to unlock files on a BitLocker-protected drive? (Each correct answer presents a complete solution. Choose three.)

- A. Automatically unlocking by logging in as the authorized user
- B. Decompressing the files

- C. Using a Smartcard and a PIN
- D. Copying the files into another folder
- E. Unhiding the files
- F. Using a password

Answer: BCF

NEW QUESTION 75

- (Exam Topic 2)

This question requires that you evaluate the underlined text to determine if it is correct. ReadyBoost increases system performance by using flash memory. Select the correct answer if the underlined text does not make the statement correct. Select "No change is needed" if the underlined text makes the statement correct.

- A. BitLocker
- B. The page file
- C. Disk Compression
- D. No change is needed

Answer: D

NEW QUESTION 76

- (Exam Topic 2)

Which Windows 7 edition is NOT available through retail and requires special Microsoft licensing?

- A. Windows 7 Ultimate
- B. Windows 7 Professional
- C. Windows 7 Premium
- D. Windows 7 Enterprise

Answer: D

NEW QUESTION 80

- (Exam Topic 2)

For each of the following statements, select Yes if the statement is true. Otherwise, select No. Each correct selection is worth one point.

Answer Area

	Yes	No
BitLocker is required for encrypting files.	<input type="radio"/>	<input type="radio"/>
An encrypted file can be permanently unencrypted.	<input type="radio"/>	<input type="radio"/>
Windows 7 Professional supports BitLocker.	<input type="radio"/>	<input type="radio"/>

- A. Mastered
- B. Not Mastered

Answer: A

Explanation:

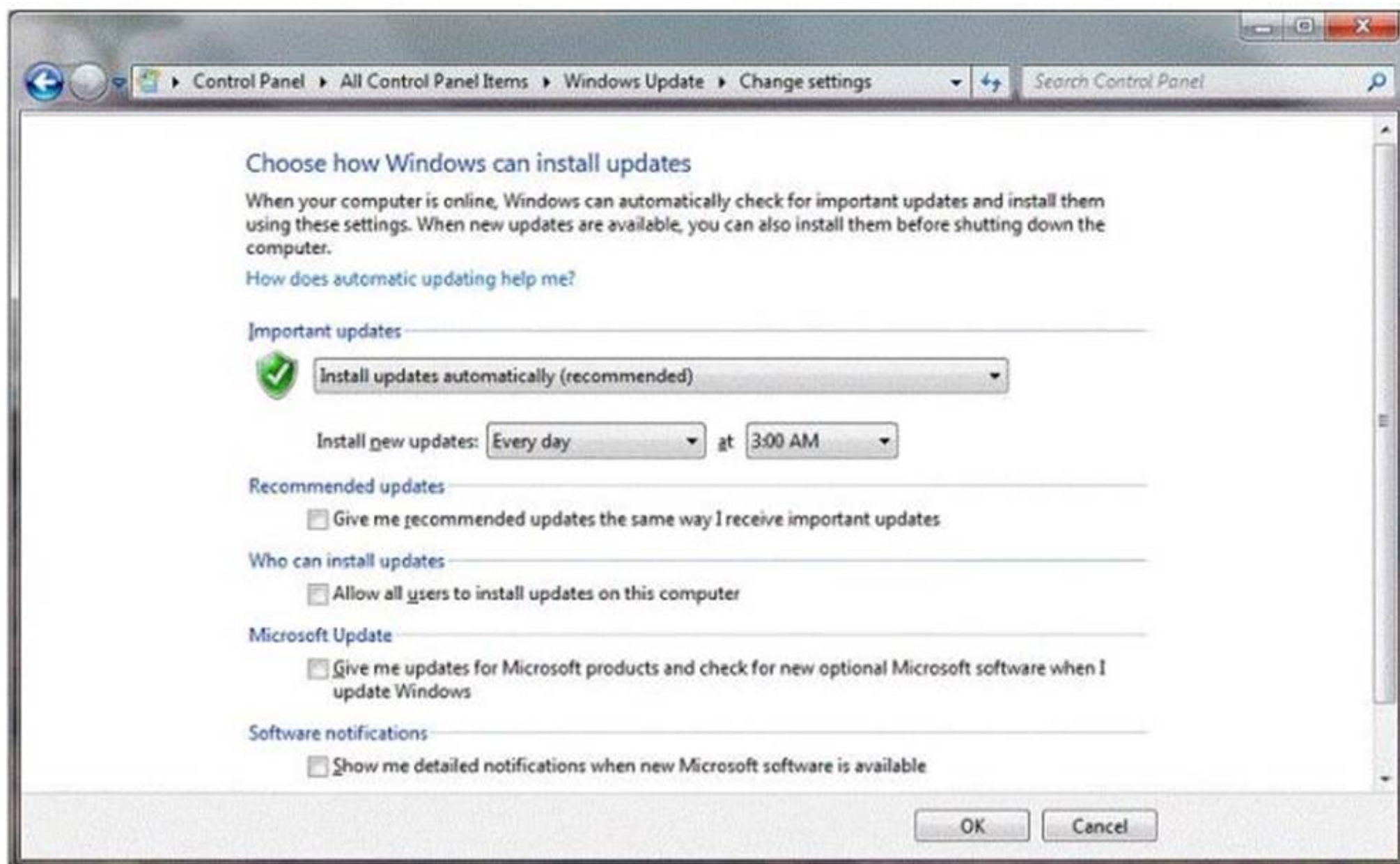
Answer Area

	Yes	No
BitLocker is required for encrypting files.	<input type="radio"/>	<input checked="" type="radio"/>
An encrypted file can be permanently unencrypted.	<input checked="" type="radio"/>	<input type="radio"/>
Windows 7 Professional supports BitLocker.	<input type="radio"/>	<input checked="" type="radio"/>

NEW QUESTION 81

- (Exam Topic 2)

You have an administrator account on your computer. You set up standard user accounts for each of your roommates. You want to ensure that your computer automatically receives the latest updates, even when your roommates are using the computer. You review the information in the following image:



Use the drop-down menus to select the answer choice that completes each statement. Each correct selection is worth one point.

Answer Area

To allow updates to install when your roommates are using the computer, select the [Answer choice]

To allow one of your roommates to install Driver Updates, select the [Answer choice]

Answer Area

To allow updates to install when your roommates are using the computer, select the [Answer choice]

To allow one of your roommates to install Driver Updates, select the [Answer choice]

- A. Mastered
- B. Not Mastered

Answer: A

Explanation:

Answer Area

To allow updates to install when your roommates are using the computer, select the [Answer choice]

To allow one of your roommates to install Driver Updates, select the [Answer choice]

NEW QUESTION 86

- (Exam Topic 2)

You work for the school library. You are instructed to upgrade all of the library's Windows 8.1 devices to Windows 10 64-bit. What is the minimum memory the devices must have for you to be able to install Windows 10 64-bit?

- A. 8 GB
- B. 4 GB
- C. 1 GB
- D. 2 GB

Answer: D

Explanation:

References:

<https://www.microsoft.com/en-gb/windows/windows-10-specifications>

NEW QUESTION 91

- (Exam Topic 2)

Instructions: For each of the following statements, select Yes if the statement is true. Otherwise, select No. NOTE: Each correct selection is worth one point.

	Yes	No
The Hyper-V role can be installed on Windows 10 Home.	<input type="radio"/>	<input type="radio"/>
Hyper-V virtual machines can only run Microsoft operating systems.	<input type="radio"/>	<input type="radio"/>
A private, virtual network can be created among virtual machines.	<input type="radio"/>	<input type="radio"/>

- A. Mastered
- B. Not Mastered

Answer: A

Explanation:

References: <https://docs.microsoft.com/en-us/virtualization/hyper-v-on-windows/quick-start/enable-hyper-v> [https://docs.microsoft.com/en-us/windows-server/virtualization/hyper-v/Supported-Linux-and-FreeBSD-virtual for-Hyper-V-on-Windows](https://docs.microsoft.com/en-us/windows-server/virtualization/hyper-v/Supported-Linux-and-FreeBSD-virtual-for-Hyper-V-on-Windows)
<https://docs.microsoft.com/en-us/virtualization/hyper-v-on-windows/quick-start/connect-to-network>

NEW QUESTION 92

- (Exam Topic 2)

Which is the preferred file system for Windows computers?

- A. NTFS file system
- B. FAT file system
- C. FAT32 file system
- D. CDFS

Answer: A

NEW QUESTION 97

- (Exam Topic 2)

What is a reason to use FAT32 as the file system for Windows 7?

- A. To have support for files larger than 4 GB
- B. To recover disk errors automatically
- C. To dual boot with an older version of Windows
- D. To set file permissions

Answer: C

NEW QUESTION 101

- (Exam Topic 2)

Your computer starts slowly, and Windows accesses files slowly.

Which two Windows features should you use to improve performance? (Choose two.)

- A. Disk Defragmenter
- B. Disk Format
- C. System Restore
- D. Disk Cleanup

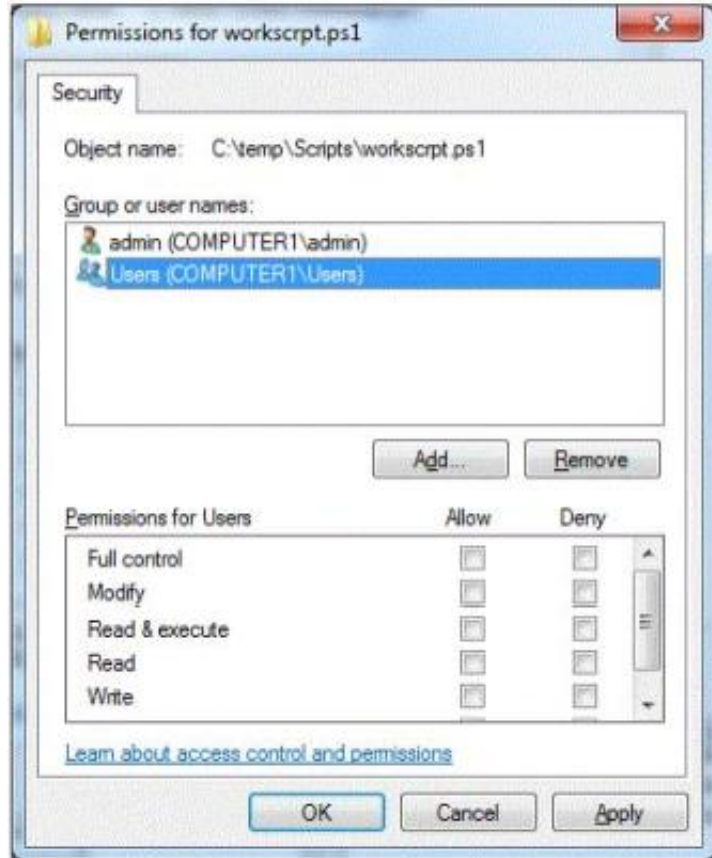
Answer: AD

NEW QUESTION 103

- (Exam Topic 2)

You have a file on your Windows 7 workstation located at c:\temp\Scripts\. The file name is workscript.ps1. You need to allow all users who log in to the workstation the ability to run the script and make changes to it.

You do not want the users to delete the file shown in the following image:



Use the drop-down menus to select the answer choice that completes each statement. Each correct selection is worth one point.

Answer Area

In order for all users to make changes without deleting the file, the **[answer choice]** permission is required.

In order for all users to run the script, the **[answer choice]** permission is required.

Answer Area

In order for all users to make changes without deleting the file, the **[answer choice]** permission is required.

In order for all users to run the script, the **[answer choice]** permission is required.

- A. Mastered
- B. Not Mastered

Answer: A

Explanation:

In order for all users to make changes without deleting the file, the [answer choice] permission is required.

Modify

In order for all users to run the script, the [answer choice] permission is required.

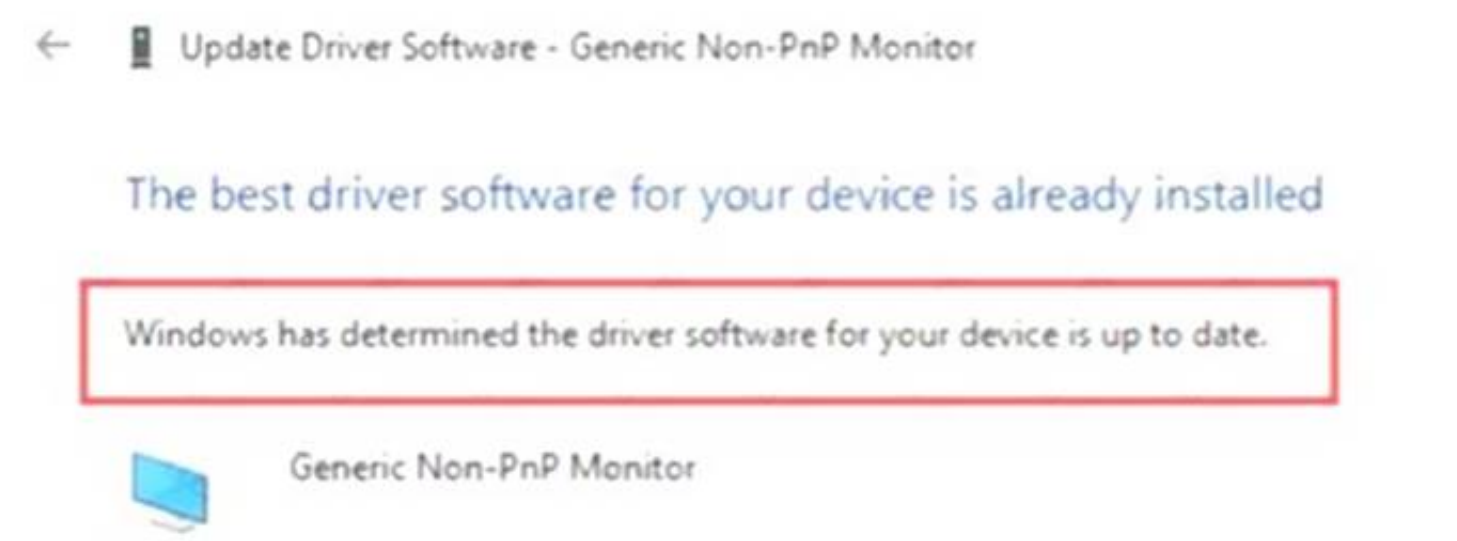
Read and execute

NEW QUESTION 107

- (Exam Topic 2)



You install a new monitor to your Windows 10 computer.

The following graphic shows the driver recommendations for the monitor.



Instructions: Use the drop-down menus to select the answer choice that completes each statement based on the information presented in the graphic.



NOTE: Each correct selection is worth one point.

<p>Why did the system choose this driver as the best available?</p>	<div>Choose One: </div> <div> <div>Windows 10 cannot identify the monitor and has installed the default driver.</div> <div>Windows 10 does not have the drivers for the monitor as part of the auto update feature.</div> <div>Windows 10 does not support the monitor, and a generic driver must be used.</div> </div>
<p>How can you update the monitor device driver to properly support the make and model?</p>	<div>Choose One: </div> <div> <div>Manually install the drivers.</div> <div>Run Windows Update.</div> <div>Restart the Windows 10 device.</div> </div>

- A. Mastered
- B. Not Mastered

Answer: A

Explanation:

<p>Why did the system choose this driver as the best available?</p>	<div>Choose One: </div> <div> <div>Windows 10 cannot identify the monitor and has installed the default driver.</div> <div>Windows 10 does not have the drivers for the monitor as part of the auto update feature.</div> <div>Windows 10 does not support the monitor, and a generic driver must be used.</div> </div>
<p>How can you update the monitor device driver to properly support the make and model?</p>	<div>Choose One: </div> <div> <div>Manually install the drivers.</div> <div>Run Windows Update.</div> <div>Restart the Windows 10 device.</div> </div>

NEW QUESTION 109

- (Exam Topic 2)

For each of the following statements, select Yes if the statement is true. Otherwise, select No. Each correct selection is worth one point.

Answer Area

	Yes	No
You can perform an in-place upgrade to Windows 7 from both Windows XP and Windows Vista.	<input type="radio"/>	<input type="radio"/>
It is possible to upgrade to a 32-bit version of Windows 7 only from a 32-bit previous version of Windows.	<input type="radio"/>	<input type="radio"/>
All upgrades to Windows 7 must be performed as clean installs.	<input type="radio"/>	<input type="radio"/>

- A. Mastered
- B. Not Mastered

Answer: A

Explanation:

Answer Area

	Yes	No
You can perform an in-place upgrade to Windows 7 from both Windows XP and Windows Vista.	<input type="radio"/>	<input checked="" type="radio"/>
It is possible to upgrade to a 32-bit version of Windows 7 only from a 32-bit previous version of Windows.	<input checked="" type="radio"/>	<input type="radio"/>
All upgrades to Windows 7 must be performed as clean installs.	<input type="radio"/>	<input checked="" type="radio"/>

NEW QUESTION 111

- (Exam Topic 2)

You need to return your Windows system files and settings to an earlier point in time without affecting personal files. What should you do?

- A. Restore a system image to the drive.
- B. Restart the computer, press F8, and select Last Known Good Configuration.
- C. Use the System Restore Wizard.
- D. Restart the computer in Safe Mode.

Answer: C

NEW QUESTION 114

- (Exam Topic 2)

You have a Windows 7 Enterprise workstation that is used by multiple users. You need to allow each of them to encrypt their own files on this workstation. Which tool should you use?

- A. EFS
- B. BitLocker
- C. ZIP
- D. Convert

Answer: A

NEW QUESTION 119

- (Exam Topic 2)

Your roommate is having problems with his computer. He cannot get Windows to boot up normally. You start the computer and press F8 to see the Advanced Boot Options.

You want to start the computer in a diagnostic mode that also has access to the Internet. Which boot option should you select?

- A. Safe Mode with Networking
- B. Start Windows Normally
- C. Safe Mode
- D. Safe Mode with Command Prompt

Answer: A

NEW QUESTION 122

- (Exam Topic 2)

A Windows 10 library:

- A. Organizes user files from disparate locations.
- B. Encrypts files by using the Encrypting File System (EFS).
- C. Makes copies of user files in a central location.
- D. Restores files from system backup.

Answer: A

Explanation:

References:<https://docs.microsoft.com/en-us/windows/client-management/windows-libraries>

NEW QUESTION 124

.....

Thank You for Trying Our Product

We offer two products:

1st - We have Practice Tests Software with Actual Exam Questions

2nd - Questons and Answers in PDF Format

98-349 Practice Exam Features:

- * 98-349 Questions and Answers Updated Frequently
- * 98-349 Practice Questions Verified by Expert Senior Certified Staff
- * 98-349 Most Realistic Questions that Guarantee you a Pass on Your FirstTry
- * 98-349 Practice Test Questions in Multiple Choice Formats and Updatesfor 1 Year

100% Actual & Verified — Instant Download, Please Click
[Order The 98-349 Practice Test Here](#)