

Exam Questions 98-349

Windows Operating System Fundamentals

<https://www.2passeasy.com/dumps/98-349/>



NEW QUESTION 1

- (Exam Topic 1)

Which program will run on a 64-bit version of the Windows operating system?

- A. A 32-bit laser printer driver
- B. A 32-bit video card driver
- C. A 32-bit version of Microsoft Office
- D. A 32-bit wireless network adapter driver

Answer: C

NEW QUESTION 2

- (Exam Topic 1)

Which two versions of Windows 7 support the Encrypting File System (EFS) functionality? (Each correct answer presents a complete solution. Chose two.)

- A. Ultimate Edition
- B. Home Premium Edition
- C. Professional Edition
- D. Starter Edition

Answer: AC

Explanation:

EFS is not fully supported on Windows 7 Starter, Windows 7 Home Basic, and Windows 7 Home Premium.

NEW QUESTION 3

- (Exam Topic 1)

Which is the fastest way to ensure that new desktop icons align into straight columns and rows?

- A. Right-click Desktop, select Properties, and then click Appearance.
- B. Right-click Desktop, select View, and then click Auto arrange icons.
- C. Right-click Taskbar, select Tile Vertically, and then click Tile Horizontally.
- D. Right-click Desktop and select Refresh.

Answer: B

NEW QUESTION 4

- (Exam Topic 1)

You need to configure a folder that allows everyone in your group to view and modify files. Which item in the Share With menu should you use?

- A. Specific People
- B. Nobody
- C. Homegroup (Read/Write)
- D. Homegroup (Read)

Answer: C

NEW QUESTION 5

- (Exam Topic 1)

The Remote Desktop Connection is used to:

- A. search the Internet.
- B. attend a webinar.
- C. access another personal computer.
- D. conduct a Lync Online Meeting.

Answer: C

NEW QUESTION 6

- (Exam Topic 1)

Windows hides some files by default to:

- A. Avoid accidental modification or deletion of system files.
- B. Protect the confidentiality of the contents of files.
- C. Improve access to system files.
- D. Save disk space.

Answer: A

NEW QUESTION 7

- (Exam Topic 1)

Your computer is running slower than usual.

Where should you look to find out which applications are consuming the maximum number of resources?

- A. Administrative Tools
- B. Device Manager
- C. System Tray
- D. Task Manager
- E. Network and Sharing Center

Answer: D

NEW QUESTION 8

- (Exam Topic 1)

Which is the largest single file that you can store on a FAT32 file system?

- A. 4GB
- B. 8GB
- C. 16GB
- D. 32GB

Answer: A

NEW QUESTION 9

- (Exam Topic 1)

Which feature should you use to install the most recent definitions for Windows Defender?

- A. Windows Update
- B. Sync Center
- C. Windows Installer
- D. Programs and Features

Answer: A

NEW QUESTION 10

- (Exam Topic 1)

Which feature ensures that your personal computer always has the latest patches and fixes for the operating system?

- A. Reliability and Performance Monitor
- B. Programs and Features
- C. System Configuration Utility
- D. Windows Update

Answer: D

NEW QUESTION 10

- (Exam Topic 1)

You need to find out whether your computer can run a program that performs resource-intensive tasks. Which Windows feature should you use?

- A. System Configuration Utility
- B. Memory Diagnostics Tool
- C. Reliability and Performance Monitor
- D. Windows Experience Index

Answer: D

NEW QUESTION 15

- (Exam Topic 1)

Which feature allows you to change the display resolution of a computer monitor?

- A. Computer Management Console
- B. System Configuration Tool
- C. Appearance and Personalization
- D. Device Manager

Answer: C

NEW QUESTION 17

- (Exam Topic 1)

Which two editions of Windows 7 support Windows XP mode? (Each correct answer presents a complete solution. Choose two.)

- A. Home Premium
- B. Starter
- C. Ultimate
- D. Professional

Answer: CD

Explanation:

Using Windows XP Mode, you can run programs that were designed for Windows XP on computers running Windows 7 Professional, Enterprise, or Ultimate

editions.

NEW QUESTION 22

- (Exam Topic 1)

You need to enable connection to a Bluetooth device.

What should you do? (To answer, move the four appropriate actions from the list of actions to the answer area and arrange them in the correct order.)

Find and pair the device.

Add a Bluetooth adapter to your computer.

Set up a new partnership in Sync Center.

Use the Add Bluetooth Device feature in Control Panel.

Turn on the Bluetooth device and make it discoverable.

Enable **Network Discovery** in Network and Sharing Center.

- A. Mastered
- B. Not Mastered

Answer: A

Explanation:

Box 1: Add a Bluetooth adapter to your computer.

Box 2: Turn on the Bluetooth device and make it discoverable. Box 3: Use the Add Bluetooth Device feature in Control Panel. Box 4: Find and pair the device

Note:

Step 1: Add a Bluetooth adapter to your computer if it doesn't already have one. You can do this by plugging the adapter into a USB port.

Step 2: Set up the Bluetooth enabled device so that your computer can find it. To do this, you must first:

Turn the device on. Make it discoverable.

Step 3 – step 4: To add a Bluetooth enabled device

Once you've verified that a Bluetooth adapter is installed on your computer, and the device you want to connect with is discoverable, you can add most Bluetooth enabled devices to your computer. Here's how:

Open Devices and Printers by clicking the Start button Picture of the Start button, and then, on the Start menu, clicking Devices and Printers.

Click Add a device, and then follow the instructions.

Click the Bluetooth enabled device you want to add to your computer, and then click Next. If you don't see the device you want to add, make sure the device is turned on and discoverable. If you just turned on the device, it may take Windows several seconds to detect it.

Windows might ask you to enter a pairing code (sometimes called a PIN or passcode). Most Bluetooth enabled devices need to be paired with your computer before they can exchange information with each other. To do this, they must exchange protected pairing codes. This means that only the wireless devices you authorize can connect with your computer.

NEW QUESTION 23

- (Exam Topic 1)

You need to find out the amount of physical memory available to Windows 7. Which command should you use?

- A. sysedit.exe
- B. msinfo32.exe
- C. msconfig.exe
- D. wmicgmt.msc

Answer: B

NEW QUESTION 27

- (Exam Topic 1)

A Windows service is a:

- A. Program or process that runs in the background and does not require user intervention.
- B. Hardware driver that provides support to a specific device.
- C. Program or process that runs in the foreground.
- D. Hardware driver that provides support to the operating system.

Answer: A

NEW QUESTION 30

- (Exam Topic 1)

You need to be able to access a file stored in a shared folder on your network even when you are disconnected from the network. What should you do?

- A. Configure the folder permissions as Read/Write.
- B. Make the folder available offline.
- C. From Control Panel, use Network and Internet.
- D. Type the IP address of the network computer in the Address field of Internet Explorer.

Answer: B

NEW QUESTION 33

- (Exam Topic 1)

You want to upgrade your computer from Windows Vista to Windows 7.

What is the minimum processor speed required to run a 64-bit version of Windows 7?

- A. 800 MHz
- B. 1.0 GHz
- C. 1.2 GHz
- D. 1.8 GHz

Answer: B

NEW QUESTION 35

- (Exam Topic 1)

You need to configure a folder that allows everyone in your department to view and edit the files in the folder. You also need to ensure that users outside the department cannot access the files.

What should you do?

- A. Grant access to a single user by using the Share With menu.
- B. Grant read access to specific people by using the Share With menu.
- C. Place the files in one of the Windows public folders.
- D. Grant read/write access to specific people by using the Share With menu.

Answer: D

NEW QUESTION 39

- (Exam Topic 1)

You plan to upgrade your computer to Windows 7.

You need to view a report that identifies potential compatibility problems with your computer's hardware, devices, and programs.

Which tool should you use?

- A. Sync Center
- B. Windows Anytime Upgrade
- C. Windows Upgrade Advisor
- D. Windows Easy Transfer

Answer: C

NEW QUESTION 40

- (Exam Topic 1)

What should you do to secure and protect the connection to a Bluetooth device?

- A. Turn off make device discoverable after connecting your devices.
- B. Reset the Bluetooth device to factory default settings after making a connection.
- C. Turn off the Bluetooth device when not in use.
- D. Use unique pairing codes when connecting your devices.

Answer: D

NEW QUESTION 42

- (Exam Topic 1)

Which Windows technology increases system performance by using flash memory?

- A. Direct Memory Access
- B. File compression
- C. Connect Now
- D. ReadyBoost

Answer: D

NEW QUESTION 44

- (Exam Topic 1)

A service pack is software that:

- A. Includes all previously released important and recommended Windows Updates.
- B. Cleans the registry and file system.
- C. Includes a reinstallation of the operating system.
- D. Enables remote servicing.

Answer: A

NEW QUESTION 48

- (Exam Topic 1)

Which file system is designed for transfer of large files between a personal computer and flash devices?

- A. FAT16 file system
- B. FAT32 file system
- C. exFAT file system
- D. NTFS file system

Answer: C

NEW QUESTION 51

- (Exam Topic 1)

You have a document that you update regularly. To access it directly from a/an:

- A. folder.
- B. icon.
- C. library.
- D. shortcut.

Answer: D

NEW QUESTION 55

- (Exam Topic 1)

Which Windows feature allows you to request that someone else control your computer from their computer?

- A. Remote Assistance
- B. Action Center
- C. Sync Center
- D. Connect Now

Answer: A

NEW QUESTION 57

- (Exam Topic 1)

You need to allow others to access your Windows 7 computer by using the Remote Desktop connection. What should you do?

- A. Click Turn on network discovery in Network and Sharing Center.
- B. Enable Remote Desktop Connections in System Properties.
- C. Start the Remote Desktop Connection client in Accessories.
- D. Set the security level to medium in Internet Options.

Answer: B

NEW QUESTION 58

- (Exam Topic 1)

You need to install Windows 7 over an existing version of Windows.

Which type of installation should you use to retain all your files, settings, and programs on your computer?

- A. Use the Windows Easy Transfer tool, and select Custom (advanced).
- B. Use the Windows 7 installation disk to perform a system repair.
- C. Use the Windows Easy Transfer tool, and select Upgrade.
- D. Use the Windows 7 installation disk to perform a clean installation.

Answer: C

NEW QUESTION 61

- (Exam Topic 1)

You want to connect to a wireless access point. You need to view a list of available networks.

Which two actions should you perform? (Each correct answer presents a complete solution. Choose two.)

- A. Click the network icon in the notification area.
- B. From Control Panel, use Windows Mobility Center.
- C. From Control Panel, use Network and Sharing Center.
- D. From Control Panel, use Sync Center.
- E. From Control Panel, use Ease of Access.

Answer: AC

NEW QUESTION 63

- (Exam Topic 1)

Which feature allows you to pause the printing of all documents waiting to print on a specific printer?

- A. The Print Setup page
- B. The printer's Properties page
- C. The printer's shortcut menu

D. The Computer Management console

Answer: C

NEW QUESTION 66

- (Exam Topic 2)

Match the Device Manager icon description to its meaning.

To answer, drag the appropriate icon description from the column on the left to its meaning on the right. Each icon description may be used once, more than once, or not at all. Each correct match is worth one point.

Icons	Answer Area
black exclamation point on a yellow background	The device was manually disabled.
red X	A critical error has occurred and the device has been disabled by the operating system.
white circle with a black down arrow	The device is NOT functioning properly.

- A. Mastered
- B. Not Mastered

Answer: A

Explanation:

Icons	Answer Area
black exclamation point on a yellow background	The device was manually disabled.
red X	A critical error has occurred and the device has been disabled by the operating system.
white circle with a black down arrow	The device is NOT functioning properly.

NEW QUESTION 68

- (Exam Topic 2)

You want to use your home computer to access your work computer.

Which two actions should you perform before connecting the computers? (Each correct answer presents part of the solution. Choose two.)

- A. Obtain the IP address of the work computer.
- B. Obtain the IP address of the home computer.
- C. Obtain the MAC address of the home computer.
- D. Allow Remote Desktop on the home computer.

- E. Allow Remote Desktop on the work computer,
- F. Obtain the MAC address of the work computer.

Answer: DE

NEW QUESTION 73

- (Exam Topic 2)

You need to find out whether a computer is running a 32-bit or 64-bit version of the Windows operating system. What should you do?

- A. From the Start menu, type 64-bit in the Search programs and files field.
- B. From Control Panel, select System.
- C. Open Device Manager and select Processors.
- D. From the Windows Help and Support feature, type 64-bit system in the Search field.

Answer: B

NEW QUESTION 76

- (Exam Topic 2)

In which location of Control Panel will you find the shortcut to manage the services on your Windows 7 computer?

- A. The Hardware and Sound group under Devices and Printers
- B. The Programs group under Programs and Features
- C. The System and Security group under Administrative Tools
- D. The Network and Internet group under Network and Sharing Center

Answer: C

NEW QUESTION 81

- (Exam Topic 2)

Match the Windows feature to its corresponding usage.

To answer, drag the appropriate Windows feature from the column on the left to its corresponding usage on the right Each Windows feature may be used once, more than once, or not at all. Each correct match is worth one point.

Windows features

Windows Media Player

Windows Media Center

IPCONFIG

Snipping Tool

MSCONFIG

Answer Area

enables screen capture and editing of the captured image

troubleshoots, enables, and disables startup services

requires use of the command prompt

enables media playback, DVR functionality, HDTV capability, and watching live TV

Windows feature

Windows feature

Windows feature

Windows feature

- A. Mastered
- B. Not Mastered

Answer: A

Explanation:

Windows features

Windows Media Player

Windows Media Center

IPCONFIG

Snipping Tool

MSCONFIG

Answer Area

enables screen capture and editing of the captured image

troubleshoots, enables, and disables startup services

requires use of the command prompt

enables media playback, DVR functionality, HDTV capability, and watching live TV

Snipping Tool

MSCONFIG

IPCONFIG

Windows Media Center

NEW QUESTION 86

- (Exam Topic 2)

Which task can be accomplished by a standard user, regardless of the system security settings?

- A. Installing a program
- B. Changing an account name or type
- C. Changing their own password
- D. Adding a driver for new hardware

Answer: D

NEW QUESTION 89

- (Exam Topic 2)

Windows presents a UAC prompt when you configure:

- A. Battery power options
- B. The desktop background
- C. Automatic updates
- D. Accessibility options

Answer: C

NEW QUESTION 90

- (Exam Topic 2)

You need to secure the contents of your entire hard disk drive even if an unauthorized user steals your computer.

Which method should you use?

- A. Rights Management Services
- B. File-level share permissions
- C. Password-protection
- D. BitLocker encryption

Answer: D

NEW QUESTION 91

- (Exam Topic 2)

After you remove malicious software from an infected computer, the user still experiences problems. When the user opens the browser, it redirects to compromised websites.

You need to troubleshoot the problem.

Which three areas should you investigate? (Choose three.)

- A. The system's hosts file
- B. The proxy settings
- C. The Windows Action Center
- D. The browser's security zone settings
- E. The browser's home page setting

Answer: CDE

NEW QUESTION 93

- (Exam Topic 2)

You want to share a document with everyone on your school network. Which Windows 7 feature should you use?

- A. Map Network Drive
- B. Public Folder
- C. Computer Management Console
- D. Documents Library

Answer: B

NEW QUESTION 96

- (Exam Topic 2)

You are setting up accounts on your computer so your roommates can log on to your computer and browse the web.

You decide to use the graphical Local Users and Groups tool to configure the user account on your computer. What does the Action display when you select a user name?

- A. A history of all actions you have performed on that user
- B. All pending actions the computer will execute
- C. Buttons to record the action you take on that user
- D. Available actions based on that user

Answer: D

NEW QUESTION 98

- (Exam Topic 2)

Which Windows feature allows you to confirm that a program should run with elevated permissions?

- A. Parental Controls
- B. Group Policy
- C. Device Manager
- D. User Account Control

Answer: D

Explanation:

References:<http://www.dummies.com/computers/operating-systems/windows-7/how-to-run-a-program-with-elevated-permissions/>

NEW QUESTION 101

- (Exam Topic 2)

For each of the following statements, select Yes if the statement is true. Otherwise, select No. Each correct selection is worth one point.

Answer Area

Yes No

NTFS and FAT32 both support a file size of over 4 GB.

☐☐

NTFS and FAT32 can both use permissions and encryption.

☐☐

NTFS and FAT32 can both be used as the format for Windows 7.

☐☐

- A. Mastered
- B. Not Mastered

Answer: A

Explanation:

Answer Area

Yes No

NTFS and FAT32 both support a file size of over 4 GB.

☐

NTFS and FAT32 can both use permissions and encryption.

☐

NTFS and FAT32 can both be used as the format for Windows 7.

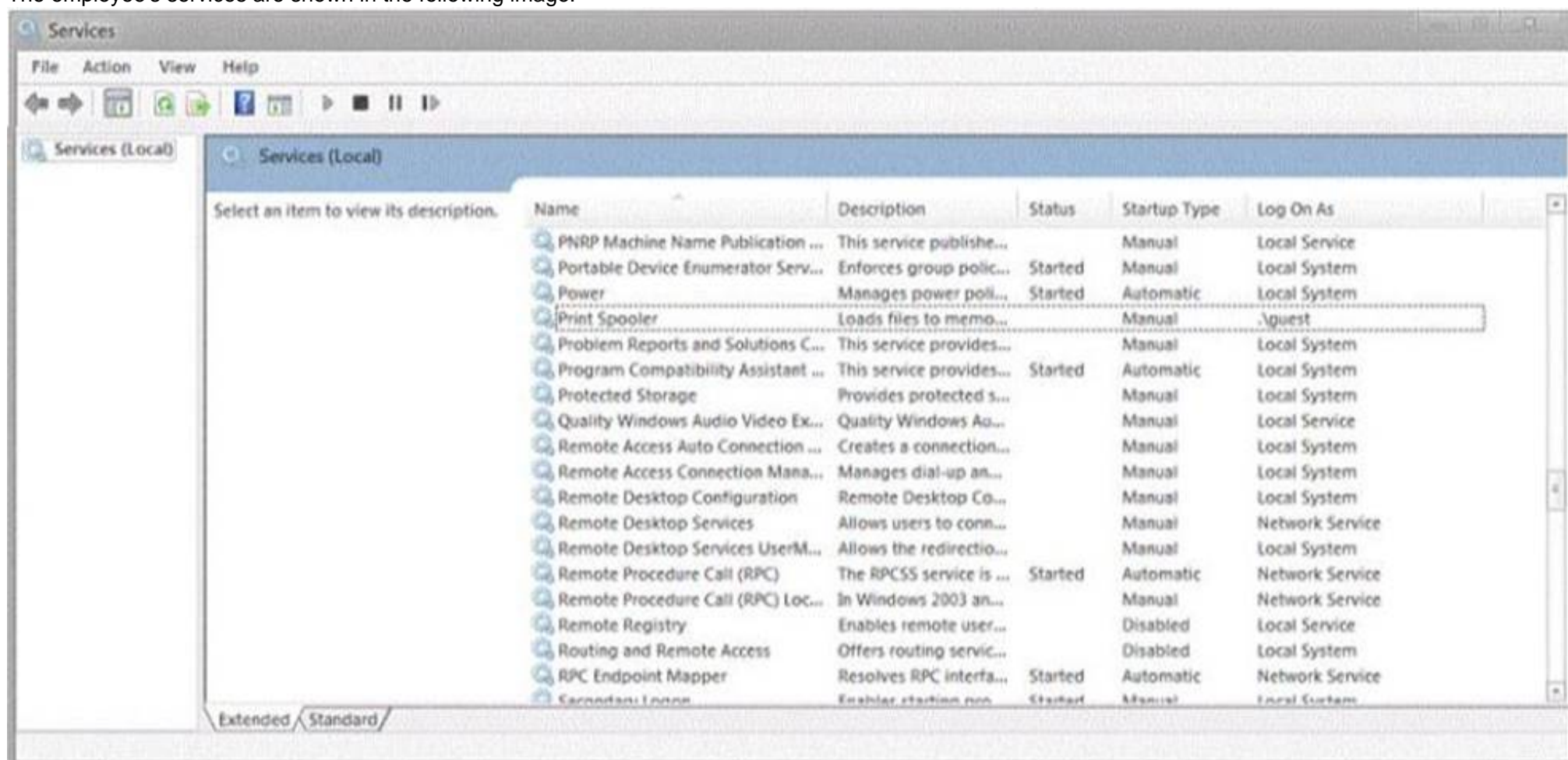
☐

NEW QUESTION 106

- (Exam Topic 2)

During your summer job at Lucerne Publishing, an employee's computer is infected by a virus, which is then removed. However, this virus made changes to a service on the computer, and now the employee is unable to print or even see networked printers.

The employee's services are shown in the following image:



Use the drop-down menus to select the answer choice that completes each statement. Each correct selection is worth one point.

Answer Area

Set the Print Spooler service to a startup type of [answer choice]

Set the Print Spooler service to the [answer choice] level of privileges.

Answer Area

Set the Print Spooler service to a startup type of [answer choice]

Set the Print Spooler service to the [answer choice] level of privileges.

- A. Mastered
- B. Not Mastered

Answer: A

Explanation:

Answer Area

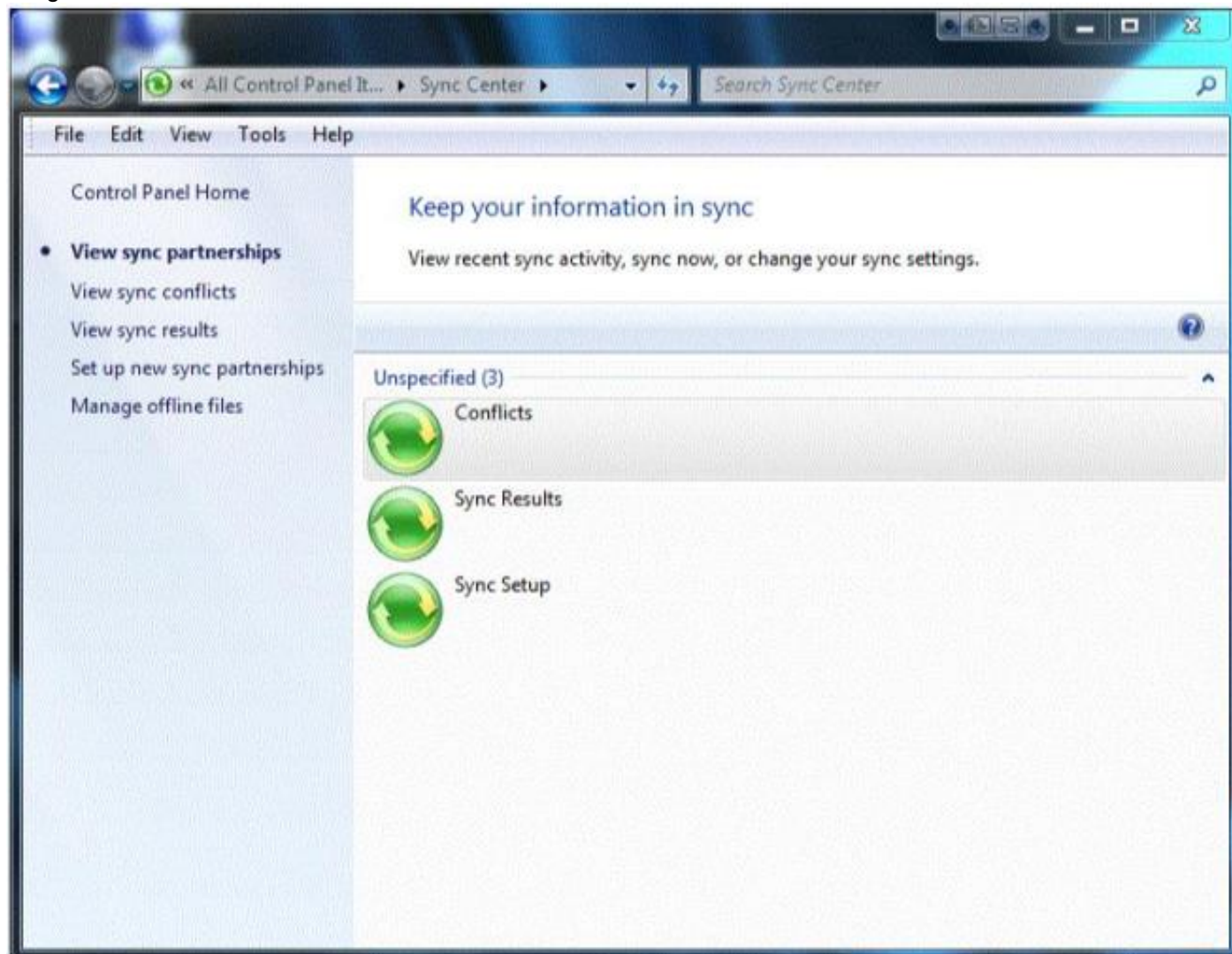
Set the Print Spooler service to a startup type of [answer choice]

Set the Print Spooler service to the [answer choice] level of privileges.

NEW QUESTION 110

- (Exam Topic 2)

You are a teaching assistant for a Basic Networking class. Periodically, you update class assignments in a Microsoft Excel spreadsheet stored on a network drive. You need to allow students who have laptops to always have a current copy of the assignments spreadsheet. You access Control Panel as shown in the following image:



Use the drop-down menus to select the answer choice that completes each statement. Each correct selection is worth one point.

First, you should [answer choice]

Next, you should [answer choice]

First, you should [answer choice]

 set up new sync partnerships.
 view sync conflicts.
 enable offline files.

Next, you should [answer choice]

 view sync results.
 set up new sync partnerships.
 view sync conflicts.

- A. Mastered
- B. Not Mastered

Answer: A

Explanation:

First, you should [answer choice]

 set up new sync partnerships.
 view sync conflicts.
 enable offline files.

Next, you should [answer choice]

 view sync results.
 set up new sync partnerships.
 view sync conflicts.

NEW QUESTION 111

- (Exam Topic 2)

You install Windows 7. When you restart your computer, Windows 7 fails to start. Which tool should you use to diagnose the problem?

- A. Windows Recovery Environment
- B. Windows Update
- C. Last Known Good Configuration
- D. Windows Easy Transfer

Answer: A

NEW QUESTION 115

- (Exam Topic 2)

You need to print a paper to give to your professor. A classmate says you can print to a USB printer, which is connected to another computer.

You try to add to your printer list and get prompted for a password that you do not know. Why does adding the printer to your computer require a password?

- A. Your User ID is not part of the local Administrators group.
- B. Your computer is not part of a domain.
- C. Your computer is not on the same network as the printer.
- D. Password Protected Sharing is enabled.

Answer: D

Explanation:

References:<https://www.recoverlostpassword.com/windows-10/how-to-turn-off-password-protected-sharing-in-w>

NEW QUESTION 119

- (Exam Topic 2)

This question requires that you evaluate the underlined text to determine if it is correct. ReadyBoost increases system performance by using flash memory.

Select the correct answer if the underlined text does not make the statement correct. Select "No change is needed" if the underlined text makes the statement correct.

- A. BitLocker
- B. The page file
- C. Disk Compression
- D. No change is needed

Answer: D

NEW QUESTION 123

- (Exam Topic 2)

Which three tasks can you perform by using Microsoft Management Console (MMC)? (Choose three.)

- A. Add new snap-ins to Windows administrative tools.
- B. View a remote user's desktop to troubleshoot and resolve problems.
- C. Create Taskpads to provide a custom view of available options.
- D. Create custom consoles containing assortments of administrative tools.
- E. Run cmdlets to run various system operations.
- F. Run a remote server application to perform a function.

Answer: ACD

NEW QUESTION 124

- (Exam Topic 2)

Which Windows 7 edition is NOT available through retail and requires special Microsoft licensing?

- A. Windows 7 Ultimate
- B. Windows 7 Professional
- C. Windows 7 Premium
- D. Windows 7 Enterprise

Answer: D

NEW QUESTION 128

- (Exam Topic 2)

For each of the following statements, select Yes if the statement is true. Otherwise, select No. Each correct selection is worth one point.

Answer Area

	Yes	No
Users logged in to Windows 7 as administrators are given a standard user token in addition to their administrator token.	<input type="radio"/>	<input type="radio"/>
A standard user account is able to make changes to services or drivers that affect other users of the computer.	<input type="radio"/>	<input type="radio"/>
To make changes to how UAC operates, you must be logged in as an administrator.	<input type="radio"/>	<input type="radio"/>

- A. Mastered
 B. Not Mastered

Answer: A

Explanation:

Answer Area

	Yes	No
Users logged in to Windows 7 as administrators are given a standard user token in addition to their administrator token.	<input checked="" type="radio"/>	<input type="radio"/>
A standard user account is able to make changes to services or drivers that affect other users of the computer.	<input type="radio"/>	<input checked="" type="radio"/>
To make changes to how UAC operates, you must be logged in as an administrator.	<input checked="" type="radio"/>	<input type="radio"/>

NEW QUESTION 130

- (Exam Topic 2)

For each of the following statements, select Yes if the statement is true. Otherwise, select No. Each correct selection is worth one point.

Answer Area

	Yes	No
Only an administrator can install a plug and play device.	<input type="radio"/>	<input type="radio"/>
If a plug and play device driver is placed in the driver store, non-administrative accounts can install the device.	<input type="radio"/>	<input type="radio"/>
A network printer installs automatically on Windows.	<input type="radio"/>	<input type="radio"/>

- A. Mastered
 B. Not Mastered

Answer: A

Explanation:

Answer Area

	Yes	No
Only an administrator can install a plug and play device.	<input type="radio"/>	<input checked="" type="radio"/>
If a plug and play device driver is placed in the driver store, non-administrative accounts can install the device.	<input checked="" type="radio"/>	<input type="radio"/>
A network printer installs automatically on Windows.	<input type="radio"/>	<input checked="" type="radio"/>

NEW QUESTION 134

- (Exam Topic 2)

You attach a second Plug and Play monitor to your computer. You need to configure the computer to use both monitors. What should you do?

- A. Configure the USB port.
- B. Use Control Panel to modify settings in the Change display settings dialog box.
- C. Use Control Panel to modify settings in Administrative Tools.
- D. Access Device Manager and select Update Driver Software.

Answer: B

NEW QUESTION 137

- (Exam Topic 2)

For each of the following statements, select Yes if the statement is true. Otherwise, select No. Each correct selection is worth one point.

Answer Area

	Yes	No
NTFS and FAT32 both support a file size of over 4 GB.	<input type="radio"/>	<input type="radio"/>
NTFS and FAT32 can both use permissions and encryption.	<input type="radio"/>	<input type="radio"/>
NTFS and FAT32 can both be used as the format for Windows 7.	<input type="radio"/>	<input type="radio"/>

- A. Mastered
- B. Not Mastered

Answer: A

Explanation:

Answer Area

	Yes	No
NTFS and FAT32 both support a file size of over 4 GB.	<input type="radio"/>	<input checked="" type="radio"/>
NTFS and FAT32 can both use permissions and encryption.	<input type="radio"/>	<input checked="" type="radio"/>
NTFS and FAT32 can both be used as the format for Windows 7.	<input checked="" type="radio"/>	<input type="radio"/>

NEW QUESTION 141

- (Exam Topic 2)

For each of the following statements, select Yes if the statement is true. Otherwise, select No. Each correct selection is worth one point.

Answer Area

	Yes	No
BitLocker is required for encrypting files.	<input type="radio"/>	<input type="radio"/>
An encrypted file can be permanently unencrypted.	<input type="radio"/>	<input type="radio"/>
Windows 7 Professional supports BitLocker.	<input type="radio"/>	<input type="radio"/>

- A. Mastered
- B. Not Mastered

Answer: A

Explanation:

Answer Area

	Yes	No
BitLocker is required for encrypting files.	<input type="radio"/>	<input checked="" type="radio"/>
An encrypted file can be permanently unencrypted.	<input checked="" type="radio"/>	<input type="radio"/>
Windows 7 Professional supports BitLocker.	<input type="radio"/>	<input checked="" type="radio"/>

NEW QUESTION 146

- (Exam Topic 2)

You turn on your computer. You receive the following message: "System Disk Not Found." Which Windows feature should you use to restore your computer?

- A. Automated System Recovery
- B. Last Known Good Configuration
- C. Check Disk (Chkdsk)
- D. Safe Mode

Answer: C

NEW QUESTION 147

- (Exam Topic 2)

You are an IT intern for Contoso, Ltd., which has five regional offices, all networked separately. Glen works in the marketing department and has a Windows 7 Professional laptop computer. He has access to numerous network printers at each regional office. He also routinely brings his computer home and prints to his home printer. In total, he has 20 printers in his list of printers, and he is frustrated that he has to change printers for each location. What should you do to help Glen?

- A. Instruct Glen that he must set the default printer when he visits each location for the first time.
- B. Under Devices and Printers, select a printer
- C. Set the Manage default printers option to Change my default printer when I change networks.
- D. Upgrade Glen's laptop to Windows 7 Enterprise to enable location-aware printing.
- E. Under Devices and Printers, right-click the default printer and select the Set as default printer option.

Answer: B

NEW QUESTION 148

- (Exam Topic 2)

For each of the following statements, select Yes if the statement is true. Otherwise, select No. Each correct selection is worth one point.

	Yes	No
An application that is installed by using Group Policy may be uninstalled by using Group Policy.	<input type="radio"/>	<input type="radio"/>
An application that is installed by using Group Policy may be uninstalled by using a script.	<input type="radio"/>	<input type="radio"/>
An application that is installed by using Group Policy may be uninstalled manually.	<input type="radio"/>	<input type="radio"/>

- A. Mastered
- B. Not Mastered

Answer: A

Explanation:

	Yes	No
An application that is installed by using Group Policy may be uninstalled by using Group Policy.	<input checked="" type="radio"/>	<input type="radio"/>
An application that is installed by using Group Policy may be uninstalled by using a script.	<input checked="" type="radio"/>	<input type="radio"/>
An application that is installed by using Group Policy may be uninstalled manually.	<input checked="" type="radio"/>	<input type="radio"/>

NEW QUESTION 149

- (Exam Topic 2)

The Disk Cleanup tool:

- A. Allows free space by deleting temporary files from the hard disk drive.
- B. Rearranges the files on the hard disk to speed up performance.
- C. Moves files so that they are logically stored on the hard disk drive.
- D. Looks the surface of the disk for errors.

Answer: A

NEW QUESTION 150

- (Exam Topic 2)

You need to find out if your Windows XP computer is capable of running Windows 7. Which tool should you use?

- A. Windows Easy Transfer
- B. Windows Upgrade Advisor
- C. Application Compatibility Toolkit
- D. Windows 7 Compatibility Checker

Answer: B

NEW QUESTION 153

- (Exam Topic 2)

Instructions: For each of the following statements, select Yes if the statement is true. Otherwise, select No. NOTE: Each correct selection is worth one point.

	Yes	No
A printer attached to a Windows 10 computer can be shared with other computers running different versions of Windows.	<input type="radio"/>	<input type="radio"/>
If you are only sharing a printer, file and print sharing does not need to be turned on.	<input type="radio"/>	<input type="radio"/>
You can only share one printer that is connected to your computer.	<input type="radio"/>	<input type="radio"/>

- A. Mastered
- B. Not Mastered

Answer: A

Explanation:

	Yes	No
A printer attached to a Windows 10 computer can be shared with other computers running different versions of Windows.	<input type="radio"/>	<input type="radio"/>
If you are only sharing a printer, file and print sharing does not need to be turned on.	<input type="radio"/>	<input type="radio"/>
You can only share one printer that is connected to your computer.	<input type="radio"/>	<input type="radio"/>

NEW QUESTION 156

- (Exam Topic 2)

Your roommate has a Windows 8.1 32-bit laptop and wants to upgrade it to Windows 10 64-bit. What should you tell her about such upgrade?

- A. You need to upgrade the existing operating system, preserving the files, applications, and settings.
- B. You need to perform a new installatio
- C. Files, applications, and settings will be deleted.
- D. You cannot upgrade Windows 8.1 32-bit to Windows 10 64-bit.
- E. You need to upgrade to Windows 8.1 64-bit and then upgrade to Windows 10 64-bit.

Answer: B

Explanation:

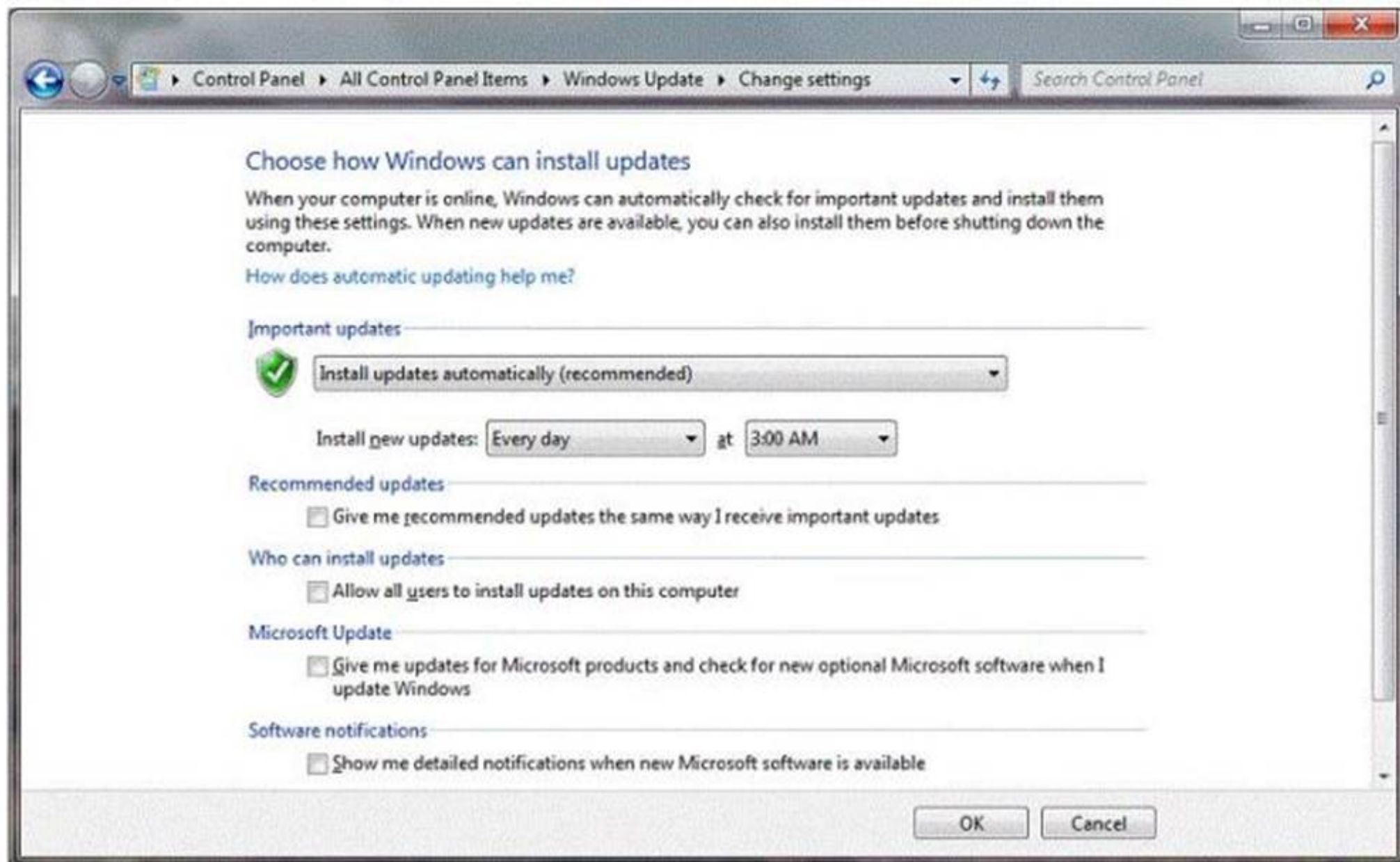
References:<http://www.intowindows.com/upgrade-to-windows-10-64-bit-from-windows-78-1-32/>

NEW QUESTION 157

- (Exam Topic 2)

You have an administrator account on your computer. You set up standard user accounts for each of your roommates.

You want to ensure that your computer automatically receives the latest updates, even when your roommates are using the computer. You review the information in the following image:



Use the drop-down menus to select the answer choice that completes each statement. Each correct selection is worth one point.

Answer Area

To allow updates to install when your roommates are using the computer, select the **[Answer choice]**

To allow one of your roommates to install Driver Updates, select the **[Answer choice]**

Answer Area

To allow updates to install when your roommates are using the computer, select the **[Answer choice]**

To allow one of your roommates to install Driver Updates, select the **[Answer choice]**

- A. Mastered
- B. Not Mastered

Answer: A

Explanation:

Answer Area

To allow updates to install when your roommates are using the computer, select the **[Answer choice]**

To allow one of your roommates to install Driver Updates, select the **[Answer choice]**

NEW QUESTION 160

- (Exam Topic 2)

You are preparing to install Windows 7 on a new computer. You need to enable BitLocker for encryption. What is required in order to enable BitLocker?

- A. FAT32 system drive
- B. Smart card
- C. NTFS system drive
- D. Trusted Platform Module (TPM)

Answer: C

NEW QUESTION 165

- (Exam Topic 2)

You have a computer with Windows Vista Home Premium installed.

Which two versions of Windows 7 are you able to upgrade to? (Choose two.)

- A. Home Basic
- B. Home Premium
- C. Professional
- D. Ultimate

Answer: BD

NEW QUESTION 167

- (Exam Topic 2)

Which is the preferred file system for Windows computers?

- A. NTFS file system
- B. FAT file system
- C. FAT32 file system
- D. CDFS

Answer: A

NEW QUESTION 170

- (Exam Topic 2)

What is a reason to use FAT32 as the file system for Windows 7?

- A. To have support for files larger than 4 GB
- B. To recover disk errors automatically
- C. To dual boot with an older version of Windows
- D. To set file permissions

Answer: C

NEW QUESTION 172

- (Exam Topic 2)

For each of the following statements, select Yes if the statement is true. Otherwise, select No. Each correct selection is worth one point.

Answer Area

	Yes	No
Restore deleted data files by using the System Restore Wizard.	<input type="radio"/>	<input type="radio"/>
Restore registry settings by using the System Restore Wizard.	<input type="radio"/>	<input type="radio"/>
Restore data files from a system image backup.	<input type="radio"/>	<input type="radio"/>

- A. Mastered
- B. Not Mastered

Answer: A

Explanation:

Answer Area

	Yes	No
Restore deleted data files by using the System Restore Wizard.	<input type="radio"/>	<input checked="" type="radio"/>
Restore registry settings by using the System Restore Wizard.	<input checked="" type="radio"/>	<input type="radio"/>
Restore data files from a system image backup.	<input checked="" type="radio"/>	<input type="radio"/>

NEW QUESTION 176

- (Exam Topic 2)

Your computer starts slowly, and Windows accesses files slowly.

Which two Windows features should you use to improve performance? (Choose two.)

- A. Disk Defragmenter
- B. Disk Format
- C. System Restore
- D. Disk Cleanup

Answer: AD

NEW QUESTION 180

- (Exam Topic 2)

This QUESTION requires that you evaluate the underlined text to determine if it is correct.

Running Windows Update will automatically download and install device drivers for Bluetooth devices. Instructions: Review the underlined text. If it makes the statement correct, select "No change is needed." If the statement is incorrect, select the answer choice that makes the statement correct.

- A. Device Manager

- B. Hardware Wizard
- C. No change is needed.
- D. Bluetooth Support Service

Answer: C

Explanation:

References: <https://support.microsoft.com/en-za/help/4028443/windows-update-drivers-in-windows-10>

NEW QUESTION 183

- (Exam Topic 2)

What are two characteristics of Windows Mobility Center? (Choose two.)

- A. Allows you to adjust the brightness of your display
- B. Allows your computer to connect to a remote server
- C. Allows you to configure power options
- D. Provides you with a virtual desktop interface
- E. Allows you to access another computer on a network

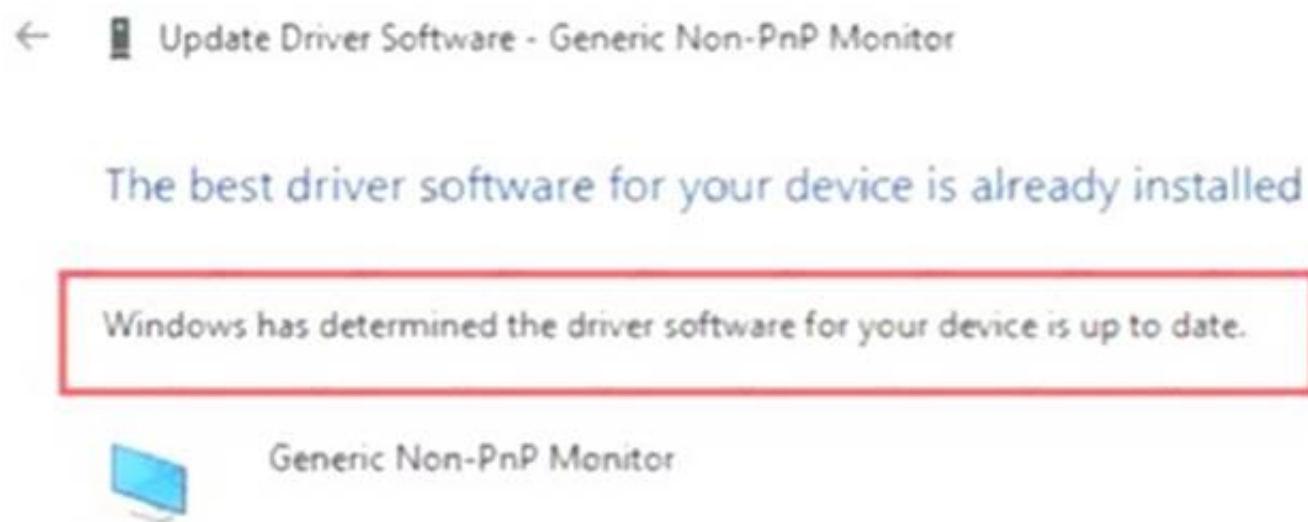
Answer: AC

NEW QUESTION 188

- (Exam Topic 2)

You install a new monitor to your Windows 10 computer.

The following graphic shows the driver recommendations for the monitor.



Instructions: Use the drop-down menus to select the answer choice that completes each statement based on the information presented in the graphic.

NOTE: Each correct selection is worth one point.

Why did the system choose this driver as the best available?

Choose One:

- Windows 10 cannot identify the monitor and has installed the default driver.
- Windows 10 does not have the drivers for the monitor as part of the auto update feature.
- Windows 10 does not support the monitor, and a generic driver must be used.

How can you update the monitor device driver to properly support the make and model?

Choose One:

- Manually install the drivers.
- Run Windows Update.
- Restart the Windows 10 device.

- A. Mastered
- B. Not Mastered

Answer: A

Explanation:

Why did the system choose this driver as the best available?

Choose One:

- Windows 10 cannot identify the monitor and has installed the default driver.
- Windows 10 does not have the drivers for the monitor as part of the auto update feature.
- Windows 10 does not support the monitor, and a generic driver must be used.

How can you update the monitor device driver to properly support the make and model?

Choose One:

- Manually install the drivers.
- Run Windows Update.
- Restart the Windows 10 device.

NEW QUESTION 192

- (Exam Topic 2)

For each of the following statements, select Yes if the statement is true. Otherwise, select No. Each correct selection is worth one point.

Answer Area

Yes No

You can perform an in-place upgrade to Windows 7 from both Windows XP and Windows Vista.

☐☐

It is possible to upgrade to a 32-bit version of Windows 7 only from a 32-bit previous version of Windows.

☐☐

All upgrades to Windows 7 must be performed as clean installs.

☐☐

- A. Mastered
B. Not Mastered

Answer: A

Explanation:

Answer Area

Yes No

You can perform an in-place upgrade to Windows 7 from both Windows XP and Windows Vista.

☐☒

It is possible to upgrade to a 32-bit version of Windows 7 only from a 32-bit previous version of Windows.

☒☐

All upgrades to Windows 7 must be performed as clean installs.

☐☒

NEW QUESTION 195

- (Exam Topic 2)

You have a Windows 7 Enterprise workstation that is used by multiple users. You need to allow each of them to encrypt their own files on this workstation. Which tool should you use?

- A. EFS
B. BitLocker
C. ZIP
D. Convert

Answer: A

NEW QUESTION 200

- (Exam Topic 2)

Your roommate is having problems with his computer. He cannot get Windows to boot up normally. You start the computer and press F8 to see the Advanced Boot Options.

You want to start the computer in a diagnostic mode that also has access to the Internet. Which boot option should you select?

- A. Safe Mode with Networking
B. Start Windows Normally
C. Safe Mode
D. Safe Mode with Command Prompt

Answer: A

NEW QUESTION 204

- (Exam Topic 2)

You are an IT intern for Contoso, Ltd. You are responsible for deploying Windows 7 to a staff of more than 100 users.

The IT department plans to execute the upgrades by using the network. You start the deployment on each computer. You guide the installs through the initial steps.

Which deployment method are you using?

- A. MSI
B. LTI
C. WMI
D. ZTI

Answer: B

NEW QUESTION 208

- (Exam Topic 2)

A Windows 10 library:

- A. Organizes user files from disparate locations.
- B. Encrypts files by using the Encrypting File System (EFS).
- C. Makes copies of user files in a central location.
- D. Restores files from system backup.

Answer: A

Explanation:

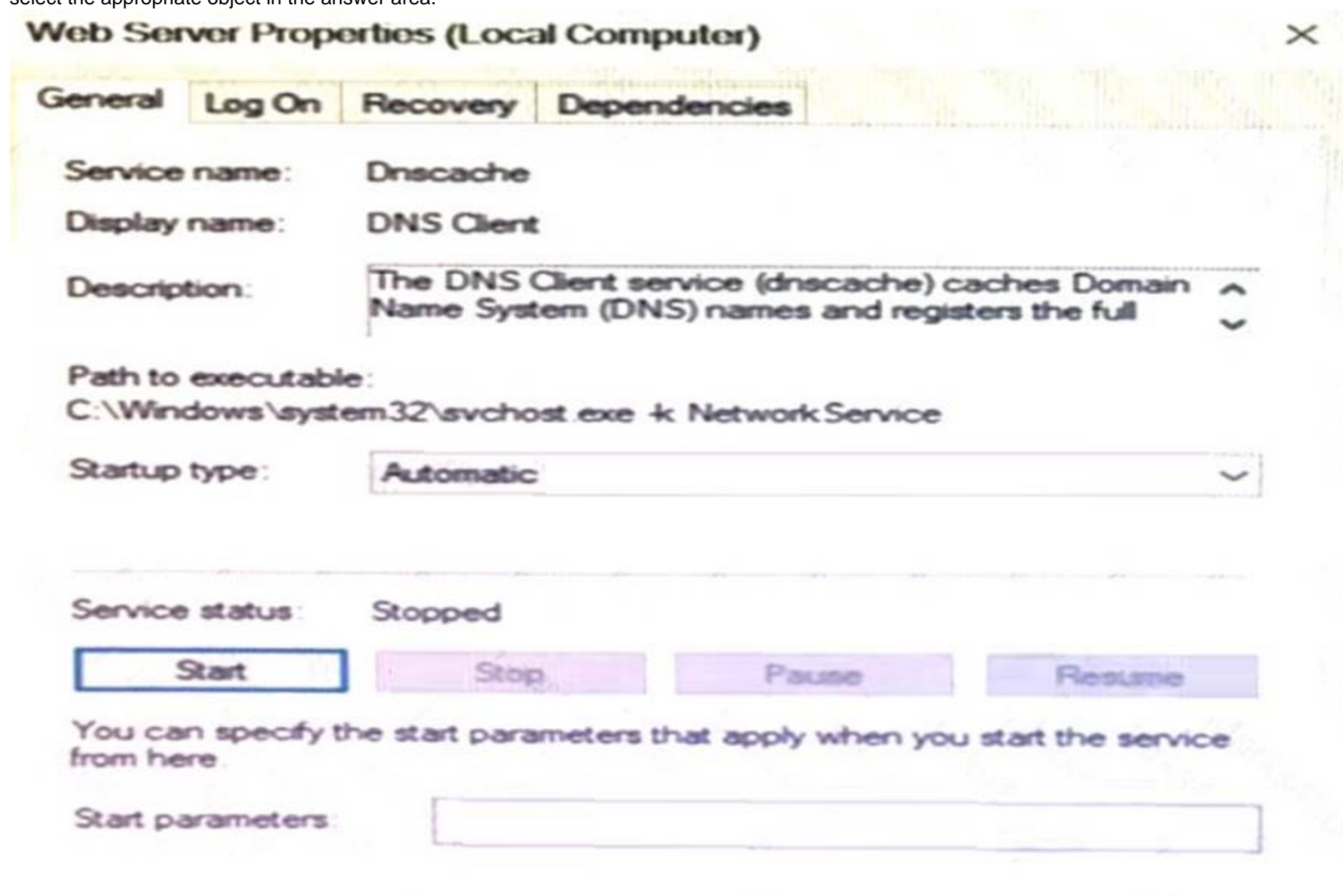
References: <https://docs.microsoft.com/en-us/windows/client-management/windows-libraries>

NEW QUESTION 210

- (Exam Topic 2)

You set up a Web Server for your group project for a Web Development class. You install the Web Server service on your Windows 10 machine. The Web Server service fails to start even though it is set to automatic.

You need to view other services that may have caused the failure. Which area on the graphic should you select to accomplish this goal? Instructions: To answer select the appropriate object in the answer area.



- A. Mastered
- B. Not Mastered

Answer: A

Explanation:

References: <https://www.howtogeek.com/school/using-windows-admin-tools-like-a-pro/lesson8/>

NEW QUESTION 215

- (Exam Topic 2)

What is the largest single file that you can store on an NTFS file system?

- A. 4 TB
- B. 8 TB
- C. 16 TB
- D. 32 GB

Answer: C

NEW QUESTION 218

.....

THANKS FOR TRYING THE DEMO OF OUR PRODUCT

Visit Our Site to Purchase the Full Set of Actual 98-349 Exam Questions With Answers.

We Also Provide Practice Exam Software That Simulates Real Exam Environment And Has Many Self-Assessment Features. Order the 98-349 Product From:

<https://www.2passeasy.com/dumps/98-349/>

Money Back Guarantee

98-349 Practice Exam Features:

- * 98-349 Questions and Answers Updated Frequently
- * 98-349 Practice Questions Verified by Expert Senior Certified Staff
- * 98-349 Most Realistic Questions that Guarantee you a Pass on Your FirstTry
- * 98-349 Practice Test Questions in Multiple Choice Formats and Updatesfor 1 Year