

Exam Questions MS-600

Building Applications and Solutions with Microsoft 365 Core Services

<https://www.2passeasy.com/dumps/MS-600/>



NEW QUESTION 1

- (Exam Topic 1)

Which type of authentication flow should you recommend for the planned integration with Office 365?

- A. device code
- B. implicit grant
- C. authorization code
- D. client credentials

Answer: C

Explanation:

To use Microsoft Graph to read and write resources on behalf of a user, your app must get an access token from the Microsoft identity platform and attach the token to requests that it sends to Microsoft Graph.

One common flow used by native and mobile apps and also by some Web apps is the OAuth 2.0 authorization code grant flow.

Scenario: Email the generated invoices to customers on behalf of the current signed-in user. Any emails generated by the system will contain the invoiced.

Use Azure AD to manage identities, authentication, and authorization. Reference: <https://docs.microsoft.com/en-us/graph/auth-v2-user>

NEW QUESTION 2

- (Exam Topic 1)

How can you validate that the JSON notification message is sent from the Microsoft Graph service?

- A. The ClientState must match the value provided when subscribing.
- B. The user_guid must map to a user ID in the Azure AD tenant of the customer.
- C. The tenant ID must match the tenant ID of the customer's Office 365 tenant.
- D. The subscription ID must match the Azure subscription used by ADatum.

Answer: A

Explanation:

clientState specifies the value of the clientState property sent by the service in each notification. The maximum length is 128 characters. The client can check that the notification came from the service by comparing the value of the clientState property sent with the subscription with the value of the clientState property received with each notification.

Note: A subscription allows a client app to receive notifications about changes to data in Microsoft Graph. Reference: <https://docs.microsoft.com/en-us/graph/api/resources/subscription>

NEW QUESTION 3

- (Exam Topic 1)

You need to protect the backend web service to meet the technical requirements.

Which four actions should you perform in sequence? To answer, move the actions from the list of actions to the answer area and arrange them in the correct order.

Actions	Answer Area
Set the App ID URI for the backend web service application registration	
Register an application in Azure AD for the backend web service	
Define the scopes in the E-invoicing application registration	
Register an application in Azure AD for E-invoicing. Grant admin consent to the E-invoicing application registration to the API scopes of the backend web service application registration	
Define the scopes in the backend web service application registration	

⬅

➡

⬆

⬆

- A. Mastered
- B. Not Mastered

Answer: A

Explanation:

Here is a quick overview of the steps:

Step 1: Register an application in Azure AD for the backend web service Register an application (backend-app) in Azure AD to represent the API. Step 2: Set the App ID URI for the backend service application registration

When the application is created (step 1) select Expose an API and click on Save and continue to create an Application ID URI.

Step 3: Defend the scopes in the backend web service application registration

In the Add a scope page, create a new scope supported by the API. (e.g., Read) then click on Add scope to create the scope. Repeat this step to add all scopes supported by your API.

Step 4: Register an application in Azure AD for E-invoicing.

Step 4.1 Register another application in Azure AD to represent a client application

Step 4.2 Now that you have registered two applications to represent the API and the Developer Console, you need to grant permissions to allow the client-app to call the backend-app.

Scenario:

Secure access to the backend web service by using Azure AD

E- invoicing will have internal logic that will dynamically identify whether the user should be allowed to call the backend API.

Reference:

<https://docs.microsoft.com/en-us/azure/api-management/api-management-howto-protect-backend-with-aad>

NEW QUESTION 4

- (Exam Topic 2)

This question requires that you evaluate the underlined BOLD text to determine if it is correct.

You develop a Microsoft Teams application that uses a messaging extension. Users can invoke the messaging extension from the Teams sidebar menu.

Instructions: Review the underlined text. If it makes the statement correct, select “No change is needed”. If the statement is incorrect, select the answer choice that makes the statement correct.

- A. No change is needed
- B. from the compose box of a Teams chat
- C. by using the Manage teams option for a team
- D. by using the Add a tab option in the Teams channel

Answer: B

Explanation:

In the app manifest for your Microsoft Teams app you'll define a single messaging extension with up to ten different commands. Each command defines a type (action or search), and the locations in the client it can be invoked from (compose message area, command bar, and/or message).

Reference:

<https://docs.microsoft.com/en-us/microsoftteams/platform/messaging-extensions/what-are-messaging-extension>

NEW QUESTION 5

- (Exam Topic 2)

You need to request permission to create a group in a Sharepoint Framework (SPFx) solution. To which file should you add the permission request?

- A. Config.json
- B. Package.json
- C. Serve.json
- D. Package-solution.json

Answer: D

NEW QUESTION 6

- (Exam Topic 2)

You are building a single-page application (SPA) that will have the following parameters:

- App Id: DBA22F72-64PA4C44-AA2C-FAA0DA5A471B
- Tenant Id: DC045C4D-5881-43C7-97AB-3C5A1ADB8DBC
- AppName: Contoso.Spa

You have a line-of-business API for invoicing that is secured by using the Microsoft identity platform. The API has the following parameters:

- * App Id: 8/9A43D7-1794-47A0-AB2B-440B63FEC248
- * Tenant Id: DC04SC4D S881-43C7-97AB 3C5A1ADB8DBC
- * AppName: Contoso.Invoicing

Contoso.Invoicing declares the following custom scopes:

- * Invoices-Read
- * Invoices. Read Write

Contoso.Spa needs to call Contoso.Invoicing to create new invoices.

Which code should you use in Contoso.Spa to obtain an access token for Contoso.Invoicing? To answer, select the appropriate options in the answer area.

NOTE: Each correct select is worth one point.

Answer Area

```
const app = new UserAgentApplication({
  auth: {
    clientId: 'DBA22F72-642A-4C44-AA2C-FAA0DA5A471B',
    clientId: '879A43D7-1794-47A0-AB2B-440B63FEC248',
    clientId: 'DC045C4D-5881-43C7-97AB-3C5A1ADB8DBC',
    authority: 'https://login.microsoftonline.com/DBA22F72-642A-4C44-AA2C-FAA0DA5A471B/',
    authority: 'https://login.microsoftonline.com/879A43D7-1794-47A0-AB2B-440B63FEC248/',
    authority: 'https://login.microsoftonline.com/DC045C4D-5881-43C7-97AB-3C5A1ADB8DBC/',
  },
  system: {
    logger: new Logger(this.logger)
  },
  cache: {cacheLocation: "localStorage"}
});

const response = await app.acquireTokenSilent({
  scopes: ['api://879A43D7-1794-47A0-AB2B-440B63FEC248/Invoices.Read'],
  scopes: ['api://879A43D7-1794-47A0-AB2B-440B63FEC248/Invoices.ReadWrite'],
  scopes: ['api://DBA22F72-642A-4C44-AA2C-FAA0DA5A471B/Invoices.ReadWrite'],
  scopes: ['api://DC045C4D-5881-43C7-97AB-3C5A1ADB8DBC/Invoices.Read'],
  scopes: ['Invoices.Read'],
  scopes: ['Invoices.ReadWrite']
});
```

- A. Mastered
B. Not Mastered

Answer: A

Explanation:

Answer Area

```
const app = new UserAgentApplication({
  auth: {
    clientId: 'DBA22F72-642A-4C44-AA2C-FAA0DA5A471B',
    clientId: '879A43D7-1794-47A0-AB2B-440B63FEC248',
    clientId: 'DC045C4D-5881-43C7-97AB-3C5A1ADB8DBC',
    authority: 'https://login.microsoftonline.com/DBA22F72-642A-4C44-AA2C-FAA0DA5A471B/',
    authority: 'https://login.microsoftonline.com/879A43D7-1794-47A0-AB2B-440B63FEC248/',
    authority: 'https://login.microsoftonline.com/DC045C4D-5881-43C7-97AB-3C5A1ADB8DBC/',
  },
  system: {
    logger: new Logger(this.logger)
  },
  cache: {cacheLocation: "localStorage"}
});

const response = await app.acquireTokenSilent({
  scopes: ['api://879A43D7-1794-47A0-AB2B-440B63FEC248/Invoices.Read'],
  scopes: ['api://879A43D7-1794-47A0-AB2B-440B63FEC248/Invoices.ReadWrite'],
  scopes: ['api://DBA22F72-642A-4C44-AA2C-FAA0DA5A471B/Invoices.ReadWrite'],
  scopes: ['api://DC045C4D-5881-43C7-97AB-3C5A1ADB8DBC/Invoices.Read'],
  scopes: ['Invoices.Read'],
  scopes: ['Invoices.ReadWrite']
});
```

NEW QUESTION 7

- (Exam Topic 2)

You have an API that is secured by using Azure Active Directory (Azure AD). You are designing a SharePoint Framework (SPFx) solution. Which object should you use to connect to the API from the solution?

- A. SPHttpClient
B. HttpClient
C. AadHttpClient

Answer: C

Explanation:

By using the AadHttpClient, you can easily connect to APIs secured by using Azure AD without having to implement the OAuth flow yourself.
 Reference: <https://docs.microsoft.com/en-us/sharepoint/dev/spfx/use-aadhttpclient>

NEW QUESTION 8

- (Exam Topic 2)

You have an application that has the code shown in the exhibits. (Click the JavaScript Version tab or the C# Version tab.)

For each of the following statements, select Yes if the statement is true. Otherwise, select No. NOTE: Each correct selection is worth one point.

JavaScript Version

```
const fs = require("fs");
const execute = async (accessToken: string, filename: string): Promise<void> => {
    //...
    const stream = await client.api(`/me/drive/root/children/${filename}/content`)
        .getStream();
    let writeStream = fs.createWriteStream(`../${filename}`);
    stream.pipe(writeStream).on("error", (err) => {
        throw err;
    });
    writeStream.on("error", (err) => {
        throw err;
    });
    await new Promise((resolve) => writeStream.on("finish", resolve));
}
//...
```

C# Version

```
namespace MyProject {
    class Handler {
        public async Task Execute(string accessToken, string path) {
            var client = new GraphServiceClient(new GraphAuthProvider(accessToken));
            var pathRequestBuilder = client.Drive.Root.ItemWithPath(path);
            var file = await pathRequestBuilder.Request().GetAsync();
            if (file.File != null)
            {
                using (var content = await pathRequestBuilder.Content.Request().GetAsync())
                using (var diskFile = System.IO.File.Create(file.Name))
                {
                    content.Seek(0, System.IO.SeekOrigin.Begin);
                    await content.CopyToAsync(diskFile);
                    await diskFile.FlushAsync();
                }
            }
        }
    }
}
```

Statements	Yes	No
The code uploads a file to a Microsoft SharePoint Online site.	<input type="radio"/>	<input type="radio"/>
The code creates a file in Microsoft OneDrive.	<input type="radio"/>	<input type="radio"/>
The code downloads a file from Microsoft OneDrive.	<input type="radio"/>	<input type="radio"/>

- A. Mastered
- B. Not Mastered

Answer: A

Explanation:

Box 1: No

Box 2: No

Box 3: Yes

A file is downloaded from OneDrive and saved locally.

Drive/Root is the drive resource is the top level object representing a user's OneDrive or a document library in SharePoint.

Reference: <https://docs.microsoft.com/en-us/graph/api/resources/drive>

NEW QUESTION 9

- (Exam Topic 2)

You are developing an application that will run as an overnight background service on a server. The service will access web-hosted resources by using the application's identity and the OAuth 2.0 client credentials grant flow.

You register the application and grant permissions. The tenant administrator grants admin consent to the application.

You need to get the access token from Azure Active Directory (Azure AD).

Which URI should you use for the POST request? To answer, select the appropriate options in the answer area.

NOTE: Each correct selection is worth one point.

```
https://login.microsoftonline.com/<TenantId>/oauth2/v2.0/
?client_id=<ClientID>
&client_secret=<ClientSecret>
&scope=https://graph.microsoft.com/.default
&grant_type=
```

authorization_code
client_credentials
on_behalf_of
refresh_token
urn:ietf:params:oauth:grant-type:jwt-bearer

authorize
code
keys
token

- A. Mastered
- B. Not Mastered

Answer: A

Explanation:

OAuth2 client_id client_secret

The authorization code flow begins with the client directing the user to the /authorize endpoint. Box 1: token

Use the authorization code to request an access token.

Now that you've acquired an authorization code and have been granted permission by the user, you can redeem the code for an access token to the desired resource, by sending a POST request to the /token endpoint:

Box 2: authorization_code

Use the authorization code to request an access token. Example:

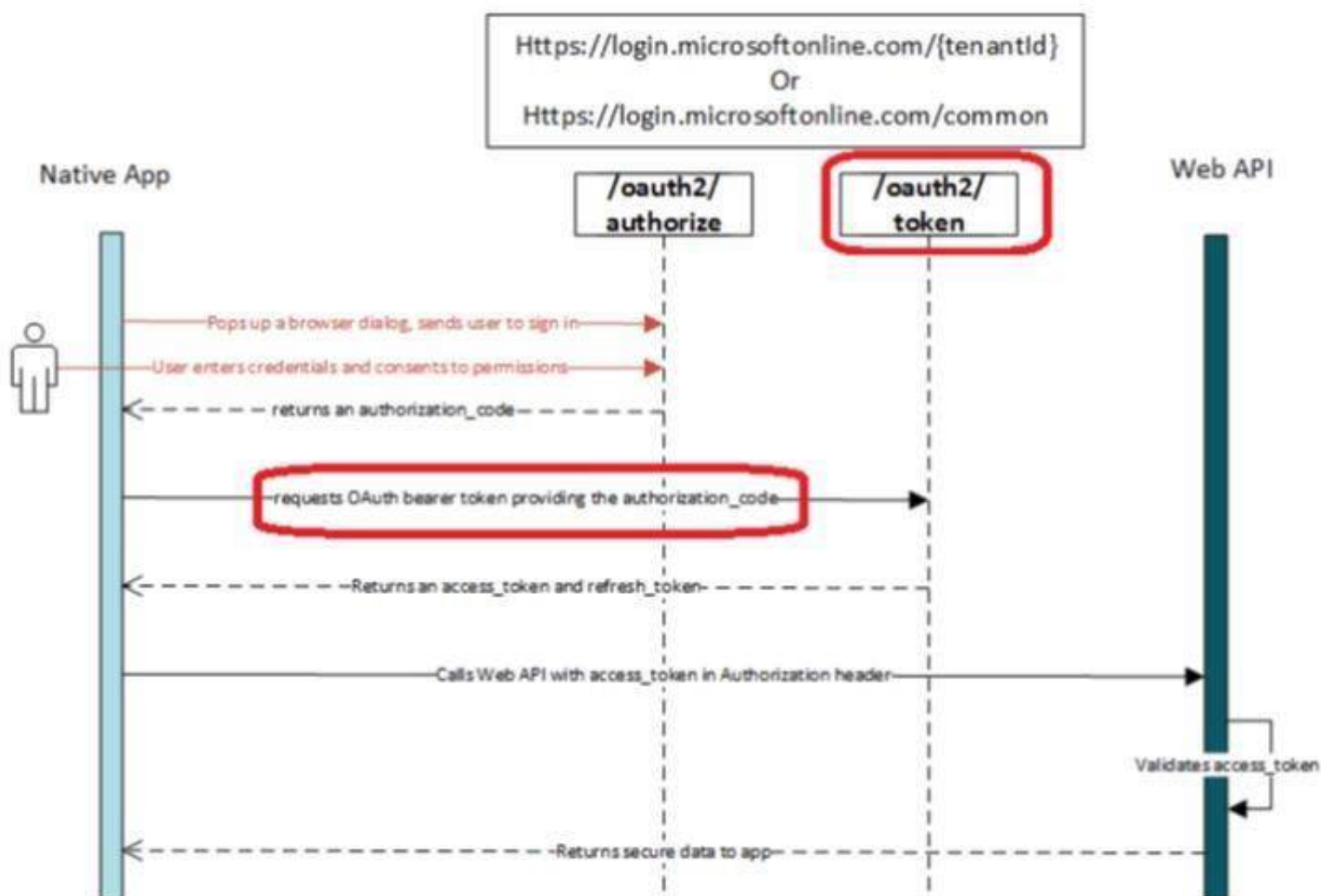
// Line breaks for legibility only

POST /{tenant}/oauth2/token HTTP/1.1 Host: https://login.microsoftonline.com

Content-Type: application/x-www-form-urlencoded grant_type=authorization_code

etc.

Note: At a high level, the entire authorization flow for an application looks a bit like this:



Reference: <https://docs.microsoft.com/en-us/azure/active-directory/develop/v1-protocols-oauth-code>

NEW QUESTION 10

- (Exam Topic 2)

You have an application named App1 that is used to administer an Azure Active Directory (Azure AD) tenant. When administrators install App1, they are prompted for admin consent.

Which application permission can cause the administrators to be prompted for consent?

- A. RoleManagement
- B. Read . Directory
- C. Device.Command

- D. Device.Read
- E. Calendars.ReadWrite

Answer: A

NEW QUESTION 10

- (Exam Topic 2)

For each of the following statements, select Yes if the statement is true. Otherwise, select No.

NOTE: Each correct selection is worth one point.

Statements	Yes	No
A Microsoft Office Add-in manifest must be stored in Azure Directory (Azure AD).	<input type="radio"/>	<input type="radio"/>
A Microsoft Office Add-in manifest must be in the JSON format.	<input type="radio"/>	<input type="radio"/>
A Microsoft Office Add-in manifest must contain a URI that points to the location that hosts the add-in.	<input type="radio"/>	<input type="radio"/>

- A. Mastered
- B. Not Mastered

Answer: A

Explanation:

Box 1: No

Box 2: No

The manifest is in XML format.

Box 3: Yes

SourceLocation is required and specifies the source file location(s) for your Office Add-in as a URL between 1 and 2018 characters long. The source location must be an HTTPS address, not a file path.

References: <https://docs.microsoft.com/en-us/office/dev/add-ins/develop/add-in-manifests> <https://docs.microsoft.com/en-us/office/dev/add-ins/reference/manifest/sourcelocation>

NEW QUESTION 13

- (Exam Topic 2)

You are building an application that will help Azure Active Directory (Azure AD) administrators manage Microsoft 365 groups.

You are building a details page that will display information about the groups.

You need to display the groups of which the current group is member. The results must contain the nested groups.

Which URI should you use?

- ☐ <https://graph.microsoft.com/v1.0/groups/{id}/transitiveMembers>
- ☐ <https://graph.microsoft.com/v1.0/groups/{id}/owners>
- ☐ <https://graph.microsoft.com/v1.0/groups/{id}/memberOf>
- ☐ <https://graph.microsoft.com/v1.0/groups/{id}/members>
- ☐ <https://graph.microsoft.com/v1.0/groups/{id}/transitiveMemberOf>

- A. Option A
- B. Option B
- C. Option C
- D. Option D
- E. Option E

Answer: D

NEW QUESTION 18

- (Exam Topic 2)

You have a starter SharePoint Framework (SPFx) web part.

You need to test the web part from the local workbench by connecting to a URL of [https:// localhost:4321/temp/workbench.html](https://localhost:4321/temp/workbench.html).

Which tool should you use make the web part available locally for debugging?

- A. Yeoman
- B. Microsoft Visual Studio Code
- C. npm install
- D. gulp serve

Answer: B

Explanation:

By setting up debugging of your SharePoint Framework solution in Visual Studio Code, you can more efficiently step through your code and fix errors. When building SharePoint Framework solutions, you can use the local workbench to verify that your web part is working correctly. Using the local workbench is convenient for testing all scenarios that do not require communicating with SharePoint as well as for offline development.
 Reference: <https://docs.microsoft.com/en-us/sharepoint/dev/spfx/debug-in-vscode>

NEW QUESTION 19

- (Exam Topic 2)

You are developing a sever-based application that has the following requirements: Prompt the user to fill out a form that contains a keyword. Search the Microsoft OneDrive folder for files that contain the keyword and return the results to the user. Allow the user to select one of the files from the results. Copy the selected file to an Azure Blob storage container.
 Which four actions should the application perform in sequence? To answer, move the actions from the list of actions to the answer area and arrange them in the correct order.

- A. Mastered
- B. Not Mastered

Answer: A

Explanation:

NEW QUESTION 21

- (Exam Topic 2)

You use Azure Active Directory (Azure AD) to store user identities. The user profile information is inconsistently populated. You need to develop a web app that will provide users with a page where they can enter their interests, skill, and description. When the user click the submit button, the app will use Microsoft graph to send the data to Azure AD.
 Which HTTP method should you use against the Microsoft graph endpoint?

- A. PUT
- B. POST
- C. PATCH
- D. GET

Answer: A

NEW QUESTION 22

- (Exam Topic 2)

Which tool can you use to generate a SharePoint Framework (SPFx) solution?

- A. Eclipse
- B. App Studio
- C. Yacc
- D. Yeoman

Answer: D

Explanation:

Yeoman helps you to kickstart new projects, prescribing best practices and tools to help you stay productive. Using the Yeoman SharePoint generator, developers are able to scaffold new client-side solution projects to build, package, and deploy SharePoint solutions. The generator provides common build tools, boilerplate code, and a common playground website to host web parts for testing. Reference:

<https://docs.microsoft.com/en-us/sharepoint/dev/spfx/toolchain/scaffolding-projects-using-yeomansharepoint-ge>

NEW QUESTION 24

- (Exam Topic 2)

You are developing an Azure function to provision a team in Microsoft Teams.

You need to create a group named Project A, add a classification of Private to the group, and then convert Project A to a team group.

How should you complete the REST requests? To answer, select the appropriate options in the answer area. NOTE: Each correct selection is worth one point.

Request 1:

	▼	https://graph.microsoft.com/v1.0/groups
GET		
PATCH		
POST		
PUT		

```
{
  "description": "",
  "displayName": "Project A",
  "groupTypes": ["Unified"],
  "mailEnabled": true,
  "mailNickname": "projecta",
  "securityEnabled": "projecta",
  "securityEnabled": false
}
```

Request 2:

	▼	https://graph.microsoft.com/v1.0/groups/{GroupID}
GET		
PATCH		
POST		
PUT		

```
{
  "classification": "Private"
}
```

Request 3:

	▼	https://graph.microsoft.com/v1.0/groups/{GroupID}/team
GET		
PATCH		
POST		
PUT		

```
{
  "memberSettings": {
    "allowCreateUpdateChannels": true
  }
}
```

- A. Mastered
- B. Not Mastered

Answer: A

Explanation:

Box 1: post

You need to create a group named Project A.

The following example creates an Office 365 group. POST <https://graph.microsoft.com/v1.0/groups> Content-type: application/json

Content-length: 244

```
{
  "description": "Self help community for library", "displayName": "Library Assist",
  "groupTypes": [ "Unified"
],
  "mailEnabled": true, "mailNickname": "library", "securityEnabled": false
}
```

Box 2: PATCH

Add a classification of Private to the group.

You can set the classification property in a PATCH request for the group, if do not set it in the initial POST request that creates the group.

Box 3: put

Then convert Project A to a team group. Syntax: PUT [/groups/{id}/team](#)

References: <https://docs.microsoft.com/en-us/graph/api/group-post-groups> <https://docs.microsoft.com/en-us/graph/api/resources/group>

<https://docs.microsoft.com/en-us/graph/api/team-put-teams>

NEW QUESTION 29

- (Exam Topic 2)

You develop a web API named WebApi1.

When validating a token received from a client application, WebApi1 receives a `MsalUiRequiredException` exception from Azure Active Directory (Azure AD).

You need to formulate the response that WebApi1 will return to the client application. Which HTTP response should you send?

- A. HTTP 307 Temporary Redirect
- B. HTTP 400 Bad Request
- C. HTTP 403 Forbidden
- D. HTTP 412 Precondition Failed

Answer: D

Explanation:

The HyperText Transfer Protocol (HTTP) 412 Precondition Failed client error response code indicates that access to the target resource has been denied. This happens with conditional requests on methods other than GET or HEAD when the condition defined by the If-Unmodified-Since or If-None-Match headers is not fulfilled. In that case, the request, usually an upload or a modification of a resource, cannot be made and this error response is sent back.

`MsalUiRequiredException`

The "Ui Required" is proposed as a specialization of `MsalServiceException` named `MsalUiRequiredException`. This means you have attempted to use a non-interactive method of acquiring a token (e.g. `AcquireTokenSilent`), but MSAL could not do it silently. this can be because:

- you need to sign-in
- you need to consent
- you need to go through a multi-factor authentication experience.

The remediation is to call `AcquireTokenInteractive` try

```
{
  app.AcquireTokenXXX(scopes, account) WithYYYY(...)
  ExecuteAsync()
}
catch(MsalUiRequiredException ex)
{
  app.AcquireTokenInteractive(scopes) WithAccount(account)
  WithClaims(ex.Claims) ExcecuteAsync();
}
```

NEW QUESTION 31

- (Exam Topic 2)

You are designing a custom SharePoint Framework (SPFx) web part that will be deployed to modern Microsoft SharePoint sites.

You need to ensure that all the web part fields and controls adopt the theme of the site when you deploy the web part.

What should you use to develop the web part?

- A. Material-UI
- B. Office UI Fabric React
- C. HTML 5.0 and CSS
- D. Fluid Framework

Answer: B

Explanation:

Office UI Fabric is Microsoft's official front end framework for building User Interface experiences for Office and Office 365. In simple terms it gives you the look and feel for your component. Moreover, they are open source, mobile responsive and reusable, no need to create from scratch just refer them in your code and start utilizing them.

Microsoft modern SharePoint out of the box webparts are made up these Office UI Fabric framework, so to maintain consistency look and feel as like Office it's better to use these components in our custom SPFx webparts.

Reference:

<http://www.sharepointsamples.com/sharepoint-framework-webpart-with-office-ui-fabric-react-component/>

NEW QUESTION 34

- (Exam Topic 2)

You are designing a Microsoft Teams application. The application will enable content authors to start conversations about news coming from a third-party application.

Which development technique should you use?

- A. incoming webhooks
- B. outgoing webhooks
- C. activity feeds
- D. deep links

Answer: D

Explanation:

Create deep links to content and features in Microsoft Teams.

You can create links to information and features within the Teams client. Examples of where this may be useful:

➤ Your app automates or simplifies certain user tasks, such as creating a chat or scheduling a meeting, by pre-populating the deep links with required parameters. This avoids the need for users to manually enter information.

➤ Navigating the user to content within one of your app's tabs.

Reference: <https://docs.microsoft.com/en-us/microsoftteams/platform/concepts/build-and-test/deep-links>

NEW QUESTION 38

- (Exam Topic 2)

You are developing an application that will track changes to the UserPrincipalName attribute of Microsoft 365 accounts.

You need to use a REST request to retrieve the information by using Microsoft Graph. The solution must minimize the amount of data retrieved.

What should you do?

- A. Use GET <https://graph.microsoft.com/v1.0/users/delta> for the first call
- B. Use the state token in subsequent calls.
- C. Use GET [https://graph.microsoft.com/v1.0/users/delta?\\$select=UserPrincipalName](https://graph.microsoft.com/v1.0/users/delta?$select=UserPrincipalName) for the first call
- D. Use the state token in subsequent calls.
- E. Use GET [https://graph.microsoft.com/v1.0/users?\\$select=UserPrincipalName](https://graph.microsoft.com/v1.0/users?$select=UserPrincipalName) for the calls and track the changes.
- F. Use GET <https://graph.microsoft.com/v1.0/users> for the calls and track the changes.

Answer: B

Explanation:

Use delta query to track changes in a resource collection

The typical call pattern is as follows: application begins by calling a GET request with the delta function on the desired resource.

➤ Microsoft

➤ The Graph sends a response containing the requested resource and a state token.

Example: Selecting three properties

The next example shows the initial request selecting three properties for change tracking, with default response behavior.

Note: Delta query enables applications to discover newly created, updated, or deleted entities without performing a full read of the target resource with every request.

Reference: <https://docs.microsoft.com/en-us/graph/api/user-delta>

NEW QUESTION 43

- (Exam Topic 2)

When developing a tab in Microsoft teams, personal, group, and shared tabs can all be implemented as configurable tabs.

Instructions: Review the underlined BOLD text, if it makes the statement correct, select " No change is needed if the statement is incorrect select the answer choice that makes the statement correct.

- A. No change is needed.
- B. Share the same code
- C. Be used in a conversation
- D. Have a configuration panel

Answer: A

NEW QUESTION 47

- (Exam Topic 2)

This question requires that you evaluate the underlined text to determine if it is correct- For a Microsoft Office Add-in. you set the icon in the Microsoft SharePoint app catalog.

Instructions: Review the underlined text. If it makes the statement correct, select "No change is needed." If the statement is incorrect, select the answer choice that makes the statement correct.

- A. No change is needed.
- B. a JSON manifest file
- C. the Office app catalog
- D. an XML manifest file

Answer: D

NEW QUESTION 52

- (Exam Topic 2)

For each of the following statements, select Yes if the statement is true. Otherwise, select NO. NOTE: Each correct selection is worth one point.

Answer Area

Statements	Yes	No
Search-based messaging extensions can query a third-party service and show the information on a card.	<input type="radio"/>	<input type="radio"/>
Search-based messaging extensions can use the Bot Framework to interact with third-party applications.	<input type="radio"/>	<input type="radio"/>
Search-based messaging extensions can be used to display information on a tab.	<input type="radio"/>	<input type="radio"/>

- A. Mastered
- B. Not Mastered

Answer: A

Explanation:

Answer Area

Statements	Yes	No
Search-based messaging extensions can query a third-party service and show the information on a card.	<input type="radio"/>	<input checked="" type="radio"/>
Search-based messaging extensions can use the Bot Framework to interact with third-party applications.	<input type="radio"/>	<input checked="" type="radio"/>
Search-based messaging extensions can be used to display information on a tab.	<input checked="" type="radio"/>	<input type="radio"/>

NEW QUESTION 55

- (Exam Topic 2)

You are developing a Microsoft Team application. To host a webpage in a Teams tab, the manifest file must include the `contentUrl` property within the `staticTabs` property.

Instructions: Review the underline text. If the makes the statement correct, select " No change is needed. " If the statement is incorrect, select the answer choice that makes the statement correct.

- A. No change is needed.
- B. `websiteUrl` property within the `configurableTabs` property
- C. `ValidDomain` property within the `configurableTabs` property
- D. `ValidDomain` property within the `statictabs` property

Answer: B

NEW QUESTION 60

- (Exam Topic 2)

You are building a Microsoft Outlook add-in.

Which object should you use to save additional information in an email?

- A. `CustomProperties`
- B. `CustomXMLParts`
- C. `RoamingSettings`
- D. `localStorage`

Answer: B

NEW QUESTION 62

.....

THANKS FOR TRYING THE DEMO OF OUR PRODUCT

Visit Our Site to Purchase the Full Set of Actual MS-600 Exam Questions With Answers.

We Also Provide Practice Exam Software That Simulates Real Exam Environment And Has Many Self-Assessment Features. Order the MS-600 Product From:

<https://www.2passeasy.com/dumps/MS-600/>

Money Back Guarantee

MS-600 Practice Exam Features:

- * MS-600 Questions and Answers Updated Frequently
- * MS-600 Practice Questions Verified by Expert Senior Certified Staff
- * MS-600 Most Realistic Questions that Guarantee you a Pass on Your FirstTry
- * MS-600 Practice Test Questions in Multiple Choice Formats and Updatesfor 1 Year