



Microsoft

Exam Questions 98-365

Windows Server Administration Fundamentals

NEW QUESTION 1

Users report that they are unable to print. You verify that the print spooler service is running. What should you do next?

- A. Purge the service
- B. Disable the service
- C. Pause the service
- D. Restart the service

Answer: D

NEW QUESTION 2

To convert a disk from dynamic to basic, you must first:

- A. Mirror all disk volumes.
- B. Connect the disk to a different controller.
- C. Delete all disk volumes.
- D. Format all disk volumes in the NTFS file system.

Answer: C

Explanation:

To change a dynamic disk back to a basic disk using the Windows interface
? Back up all volumes on the disk you want to convert from dynamic to basic.
? In Disk Management, right-click each volume on the dynamic disk you want to convert to a basic disk, and then click Delete Volume for each volume on the disk.
? When all volumes on the disk have been deleted, right-click the disk, and then click Convert to Basic Disk.

NEW QUESTION 3

HOTSPOT

For each of the following statements, select Yes if the statement is true. Otherwise, select No. Each correct selection is worth one point.

Answer Area

	Yes	No
A 32-bit client machine can use the 64-bit version of a printer driver.	<input type="radio"/>	<input type="radio"/>
A server can have multiple driver types installed for a single printer.	<input type="radio"/>	<input type="radio"/>
The print server must be 64-bit to support 64-bit and 32-bit clients.	<input type="radio"/>	<input type="radio"/>

- A. Mastered
- B. Not Mastered

Answer: A

Explanation:

Answer Area

	Yes	No
A 32-bit client machine can use the 64-bit version of a printer driver.	<input type="radio"/>	<input checked="" type="radio"/>
A server can have multiple driver types installed for a single printer.	<input checked="" type="radio"/>	<input type="radio"/>
The print server must be 64-bit to support 64-bit and 32-bit clients.	<input checked="" type="radio"/>	<input type="radio"/>

NEW QUESTION 4

Which storage technology supports speeds up to 16 Gbps?

- A. Network File System (NFS)
- B. Small Computer System Interface (SCSI)
- C. Serial Advanced Technology Attachment (SATA)
- D. Fibre Channel (FC)

Answer: D

Explanation:

Fibre Channel, or FC, is a high-speed network technology (commonly running at 2-, 4-, 8- and 16-gigabit per second rates) primarily used to connect computer data storage.

Reference: http://en.wikipedia.org/wiki/Fibre_Channel

NEW QUESTION 5

This question requires that you evaluate the underlined text to determine if it is correct.

You install a new Windows Server 2008 R2 server for your school athletic department. The installation completes without errors. However, the new server is unable to communicate with the network. After checking cable connections and network configuration, you find that no network connections are listed in the Control Panel/Network Connections applet.

You should use "Device Manager" to investigate a potential problem with the network adapter driver.

Select the correct answer if the underlined text does not make the statement correct. Select "No change is needed" if the underlined text makes the statement correct

- A. Network and Sharing Center
- B. Control Panel/Network Connections
- C. Server Manager/WMI Control
- D. No change is needed

Answer: D

Explanation:

The Device Manager is a Control Panel applet in Microsoft Windows operating systems. It allows users to view and control the hardware attached to the computer. When a piece of hardware is not working, the offending hardware is highlighted for the user to deal with.

Reference: http://en.wikipedia.org/wiki/Device_Manager

NEW QUESTION 6

You manage the servers for the School of Business at your university. The school has a Hyper-V server that runs three virtual machines (VMs). Each VM runs Windows Server 2008 R2.

You need to apply the latest Windows server updates to each of the VMs. You need to be able to revert the servers back to their original state before applying the updates.

Which Microsoft Virtualization feature should you use?

- A. Live Migration
- B. Snapshots
- C. VHD Virtual Hard Disks
- D. Failover Cluster

Answer: B

Explanation:

Snapshots provide a fast and easy way to revert the virtual machine to a previous state.

NEW QUESTION 7

What are two functions of the Group Policy loopback feature? (Choose two.)

- A. Apply Group Policy Objects for only the current site.
- B. Apply Group Policy Objects that depend only on the computer the user logs on to.
- C. Apply only the local computer Group Policy Object.
- D. Give higher precedence to computer policy over user policy.

Answer: BD

Explanation:

Loopback processing of Group Policy has two different modes, Replace and Merge.

* (B) Replace mode replaces User Configuration with the one applied to the Computer.

* (D) In Merge mode, if there is a conflict, for example two policies provide different values for the same configuration setting, the Computer's policy has more privilege compared to the user policy.

Reference: <http://kudratsapaev.blogspot.se/2009/07/loopback-processing-of-group-policy.html>

NEW QUESTION 8

Which RAID level mirrors a set of disks and then stripes across the disks?

- A. RAID 0
- B. RAID 1
- C. RAID 5
- D. RAID 10

Answer: D

Explanation:

A RAID 1+0, sometimes called RAID 1&0 or RAID 10. RAID 10 is a stripe of mirrors.

NEW QUESTION 9

You need to find a list of specific events. What should you do?

- A. Export the events to a .doc file.
- B. Clear the log by saving it.
- C. Filter by creating a custom view.
- D. Use the Search menu option.

Answer: C

Explanation:

Quickly Filter Event Logs in Windows Server 2008

The Event Viewer automatically creates several filtered views of the event logs. Filtered views are listed under the Custom Views node.

NEW QUESTION 10

Which disk types can be used for internal storage?

- A. SAN/iSCSI
- B. NFS/Distributed File System (DFS)
- C. PATA/SATA/SCSI
- D. NAS/Fiber-channel

Answer: C

NEW QUESTION 10

Which technology is designed to help teams collaborate?

- A. Microsoft SharePoint Server
- B. Microsoft System Center Operations Manager
- C. Microsoft Forefront Identity Manager
- D. Microsoft BizTalk Server

Answer: A

Explanation:

* Organizations use SharePoint to create websites. You can use it as a secure place to store, organize, share, and access information from almost any device. All you need is a web browser, such as Internet Explorer, Chrome, or Firefox.

* SharePoint Workspace A desktop program that you can use to take SharePoint site content offline and collaborate on the content with others while you are disconnected from the network. While you and other team members are offline, you can make changes to

* SharePoint content that will eventually synchronize back to the SharePoint site.

Incorrect:

not B: System Center 2012 – Operations Manager provides infrastructure monitoring that is flexible and cost-effective, helps ensure the predictable performance and availability of vital applications, and offers comprehensive monitoring for your datacenter and cloud, both private and public.

Not C: Microsoft Forefront Identity Manager 2010 R2 delivers self-service identity management for users, automates lifecycle management across heterogeneous platforms for administrators, and provides a rich policy framework for enforcing corporate security policies.

Not D: Microsoft BizTalk Server (or simply "BizTalk") enables companies to automate business processes, through the use of adapters which are tailored to communicate with different software systems used in an enterprise.

NEW QUESTION 14

The owner of Fourth Coffee wants to add a new computer to the company network. The owner configures the Host Address for the computer but still cannot connect to the network.

Which component should the owner use to connect to the network?

- A. DNS Server
- B. DHCP address
- C. Subnet mask
- D. Domain name

Answer: C

Explanation:

The second item the subnet mask is missing here. It is required for TCP/IP to work.

Reference: Understanding TCP/IP addressing and subnetting basics <https://support.microsoft.com/en-us/kb/164015>

NEW QUESTION 19

This question requires that you evaluate the underlined text to determine if it is correct.

Active Directory "Distribution groups" can only be assigned permissions to resources within the same domain but can have members from other domains.

Select the correct answer if the underlined text does not make the statement correct. Select 'No change is needed' if the underlined text makes the statement correct.

- A. Global groups
- B. Universal groups
- C. Domain local groups
- D. No change is needed

Answer: C

Explanation:

Distributions groups are used as recipients of email messages.

Domain local groups:

* Member permissions can be assigned only within the same domain as the parent domain local group

* Group can include as member: Accounts from any domain Global groups from any domain

Universal groups from any domain

Reference: Group scope

<https://technet.microsoft.com/en-us/library/cc755692%28v=ws.10%29.aspx>

Domain local groups but only from the same domain as the parent domain local group

NEW QUESTION 21

Which file extension indicates a Hyper-V virtual disk file?

- A. Mastered
- B. Not Mastered

Answer: A

Explanation:

* . VHD (file format)
VHD (Virtual Hard Disk) is a file format which represents a virtual hard disk drive (HDD). It may contain what is found on a physical HDD, such as disk partitions and a file system, which in turn can contain files and folders. It is typically used as the hard disk of a virtual machine.
* Virtual Hard Disk format was initially used only by Microsoft Virtual PC (and Microsoft Virtual Server). Later however, Microsoft used the VHD format in Hyper-V, the hypervisor- based virtualization technology of Windows Server 2008.

NEW QUESTION 25

Which technology provides both e-mail and database services?

- A. Windows Server Enterprise Edition
- B. Microsoft Office Communications Server
- C. Windows Small Business Server
- D. Microsoft Project Server

Answer: C

Explanation:

Windows Small Business Server is available in Essentials, Standard, and Premium editions. Essentials is a scaled down version for 1-25 users, both the other editions are based on the Windows Server codebase and include Microsoft Exchange Server mail server, Internet Information Services (IIS) web server, Windows SharePoint Services for collaboration, Microsoft Office Outlook 2003 email client (not included in 2008), Routing and Remote Access Service (RRAS), Windows Server Update Services for update management across the network, and a Fax server. Up to SBS 2003, the Premium edition also included Microsoft SQL Server, Microsoft Internet Security and Acceleration Server and Microsoft Office FrontPage 2003.

NEW QUESTION 27

HOTSPOT

For each of the following statements, select Yes if the statement is true. Otherwise, select No. Each correct selection is worth one point.

Answer Area

	Yes	No
An organizational unit can only contain objects within its parent domain.	<input type="radio"/>	<input type="radio"/>
Two organizational units from different domains can share objects.	<input type="radio"/>	<input type="radio"/>
An organizational unit administrator requires domain administrator rights.	<input type="radio"/>	<input type="radio"/>

- A. Mastered
- B. Not Mastered

Answer: A

Explanation:

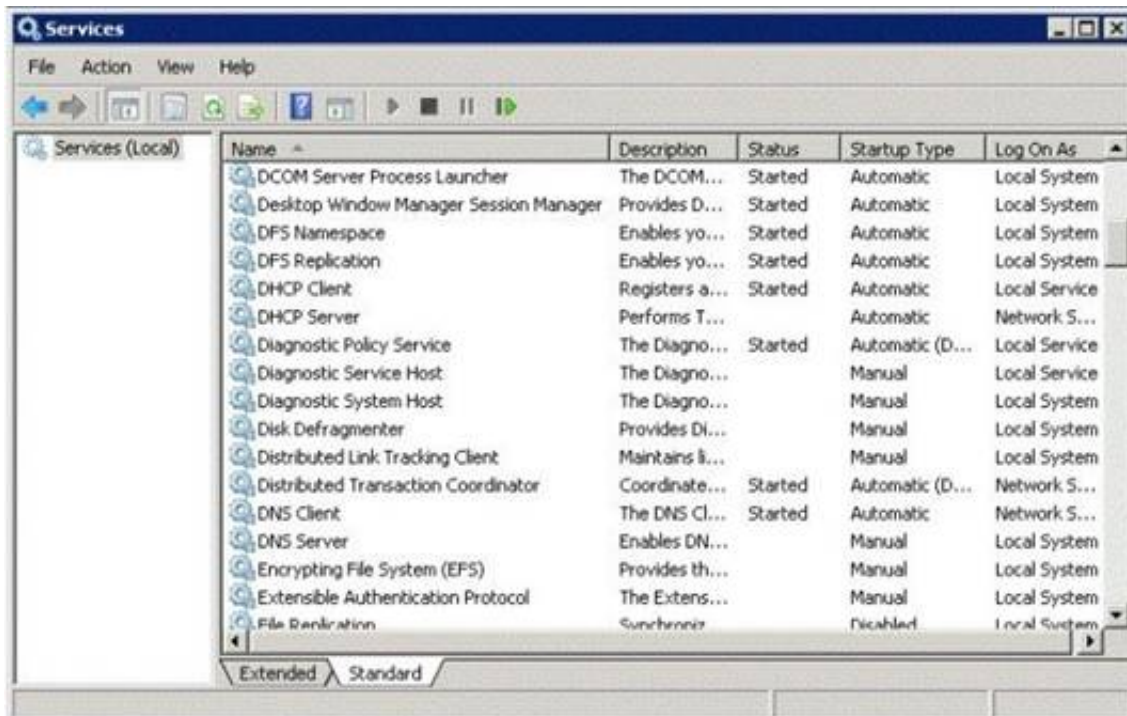
Answer Area

	Yes	No
An organizational unit can only contain objects within its parent domain.	<input checked="" type="radio"/>	<input type="radio"/>
Two organizational units from different domains can share objects.	<input type="radio"/>	<input checked="" type="radio"/>
An organizational unit administrator requires domain administrator rights.	<input type="radio"/>	<input checked="" type="radio"/>

NEW QUESTION 32

HOTSPOT

You restart the Windows Server 2008 R2 server for your computer lab.
After the restart, a workstation cannot connect to any local network resource. Other workstations in the lab can connect to local network resources, but cannot browse the Internet.
The Services console is shown in the following image:



Use the drop-down menus to select the answer choice that completes each statement. Each correct selection is worth one point.

Answer Area

Changing the status of the DHCP Server service to [answer choice] allows the users to receive working IP addresses.

Resume
Automatic
Started

Setting the DNS Server service startup type to [answer choice] restores name resolution services when the server is rebooted.

Manual
Automatic
Started

- A. Mastered
- B. Not Mastered

Answer: A

Explanation:

Answer Area

Changing the status of the DHCP Server service to [answer choice] allows the users to receive working IP addresses.

Resume
Automatic
Started

Setting the DNS Server service startup type to [answer choice] restores name resolution services when the server is rebooted.

Manual
Automatic
Started

NEW QUESTION 36

Which two components are required to configure a TCP/IP connection? (Choose two)

- A. Subnet mask
- B. DHCP address
- C. Host address
- D. Domain name

Answer: AB

Explanation:

An IP address and a subnet mask.

NEW QUESTION 40

Which task can you accomplish by using Organizational Units?

- A. Apply shared folder permissions to users
- B. Place different domains in a centralized manageable environment
- C. Create a secondary Active Directory
- D. Logically represent a hierarchical structure of your company

Answer: D

Explanation:

A particularly useful type of directory object contained within domains is the organizational unit. Organizational units are Active Directory containers into which you can place users, groups, computers, and other organizational units. An organizational unit cannot contain objects from other domains.

An organizational unit is the smallest scope or unit to which you can assign Group Policy settings or delegate administrative authority. Using organizational units, you can create containers within a domain that represent the hierarchical, logical structures within your organization.

NEW QUESTION 41

This question requires that you evaluate the underlined text to determine if it is correct. You need to troubleshoot network environment problems. First, you define the issues that are most likely causing the symptoms. Then you eliminate each issue until the symptoms disappear. This approach is referred to as "performance" troubleshooting. Select the correct answer if the underlined text does not make the statement correct. Select "No change is needed" if the underlined text makes the statement correct.

- A. Systematic
- B. Specific
- C. Trial and error
- D. No change is needed

Answer: A

Explanation:

The ability to troubleshoot effectively reduces downtime and increases safety.
A Systematic approach brings efficiencies to the process of troubleshooting. Preparation
Step 1: Observe Behavior
Step 2: Define Problem Area Step 3: Identify Possible causes
Step 4: Determine Most Probable cause Step 5: Test and Repair
Follow-up
Reference: <http://www.troubleshootingskills.com/how-it-works/systematic-approach/>

NEW QUESTION 46

What is the minimum number of disks required for RAID 5?

- A. 1
- B. 2
- C. 3
- D. 5

Answer: :C

Explanation:

You would need two disks for data and one for parity.

NEW QUESTION 51

The manager at the coffee house where you work asks for advice on adding storage to the store's server to perform backups. The additional storage must meet the following requirements:
? Hold at least 600 GB
? Be reasonably priced
? Be reasonably fast
Which solution should you recommend?

- A. USB hard drive
- B. USB flash drive
- C. SCSI tape backup system
- D. External SCSI hard drive

Answer: C

NEW QUESTION 55

You need to manage a Windows Server 2008 server from a Windows client computer by using a Management Console. What should you install on the client computer?

- A. Remote Assistance
- B. Remote Server Administration Tools
- C. Windows Server Resource Kit
- D. Microsoft Office SharePoint Server

Answer: B

Explanation:

Example: Remote Server Administration Tools for Windows 8.1 enables IT administrators to manage roles and features that are installed on computers that are running Windows Server 2012 or Windows Server 2012 R2 from a remote computer that is running Windows 8.1 Pro or Windows 8.1 Enterprise.

NEW QUESTION 60

Which RAID level can consist of two disks and provides redundancy?

- A. RAID 0
- B. RAID 1
- C. RAID 5
- D. RAID 10

Answer: B

NEW QUESTION 61

HOTSPOT

For each of the following statements, select Yes if the statement is true. Otherwise, select No. Each correct selection is worth one point.

Answer Area

	Yes	No
Active Directory groups can be used to assign permissions on a shared folder on a member server.	<input type="radio"/>	<input type="radio"/>
Active Directory groups can be linked to Active Directory group policies.	<input type="radio"/>	<input type="radio"/>
Local groups on a member server can be members of global groups in a domain.	<input type="radio"/>	<input type="radio"/>

- A. Mastered
- B. Not Mastered

Answer: A

Explanation:

Answer Area

	Yes	No
Active Directory groups can be used to assign permissions on a shared folder on a member server.	<input checked="" type="radio"/>	<input type="radio"/>
Active Directory groups can be linked to Active Directory group policies.	<input checked="" type="radio"/>	<input type="radio"/>
Local groups on a member server can be members of global groups in a domain.	<input type="radio"/>	<input checked="" type="radio"/>

NEW QUESTION 66

A domain controller that is designated to perform a set of specialized domain controller tasks is commonly referred to as a/an:

- A. Windows Internet Name Service (WINS) server
- B. Operations Master
- C. Organizational Unit
- D. Primary domain controller

Answer: B

Explanation:

Operations Master Roles
The five operations master roles are assigned automatically when the first domain controller in a given domain is created.

NEW QUESTION 69

By default, which group can create and link Group Policy Objects?

- A. Authenticated Users
- B. Domain Users
- C. Domain Administrators
- D. Local Administrators

Answer: :C

Explanation:

The Domain Administrators are the only people who can create GPOs by default.

NEW QUESTION 70

Which technology is designed to host calendars, contacts, and e-mail on the server?

- A. Microsoft Host Integration Server
- B. Microsoft Expression Studio
- C. Microsoft SQL Server
- D. Microsoft Exchange Server

Answer: D

NEW QUESTION 72

What is required to create a volume mount point?

- A. A dynamic disk
- B. RAID 1 implementation
- C. An NTFS file system volume or partition
- D. Extended volumes

Answer: C

Explanation:

A volume mount point can be placed in any empty folder of the host NTFS volume.

NEW QUESTION 77

Which technology is used to create and manage relational databases?

- A. Microsoft Exchange Server
- B. Microsoft Commerce Server
- C. Microsoft Groove Server
- D. Microsoft SQL Server

Answer: D

Explanation:

SQL Server databases are relational.

NEW QUESTION 78

You need to access resources located in another forest. Which should you create?

- A. Child domain
- B. Distribution group
- C. Trust
- D. Organizational unit

Answer: D

NEW QUESTION 80

This question requires that you evaluate the underlined text to determine if it is correct.

"Microsoft App-V" can make applications available to end user computers without having to install the applications on those computers.

Select the correct answer if the underlined text does not make the statement correct. Select 'No change is needed' if the underlined text makes the statement correct.

- A. Microsoft Hyper-V
- B. DirectAccess
- C. Windows Deployment Services
- D. No change is needed.

Answer: D

Explanation:

Microsoft Application Virtualization (MS App-V) platform allows applications to be deployed ("streamed") in real-time to any client from a virtual application server. It removes the need for traditional local installation of the applications.

Reference: http://en.wikipedia.org/wiki/Microsoft_App-V

NEW QUESTION 81

This question requires that you evaluate the underlined text to determine if it is correct. Settings from the "Local" Group Policy Object are processed last during logon.

Select the correct answer if the underlined text does not make the statement correct. Select 'No change is needed' if the underlined text makes the statement correct.

- A. Site
- B. Organizational Unit
- C. Domain
- D. No change is needed.

Answer: B

Explanation:

Group Policy settings are processed in the following order:

1. Local Group Policy object

2. Site

3. Domain

4. Organizational Unit

Reference: Group Policy processing and precedence <https://technet.microsoft.com/en-us/library/cc785665%28v=ws.10%29.aspx>

NEW QUESTION 84

You need to apply a Windows Server 2008 group policy. You also need to prevent policies that are applied at lower levels from affecting this new policy. What should you do?

- A. Set the policy to Loopback
- B. Set the permission to Full Control
- C. Select the Enforced policy link setting
- D. Select the Enabled policy link setting

Answer: C

Explanation:

Example:

To enforce a Group Policy object link

? In the Group Policy Management Console (GPMC) console tree, double-click the

forest containing the domain, site, or organizational unit (OU) containing the link you want to enforce, and then do one of the following:

? Right-click the GPO link, and then click Enforced to enable or disable enforcing the

link. A check mark next to Enforced indicates that the link is enforced.

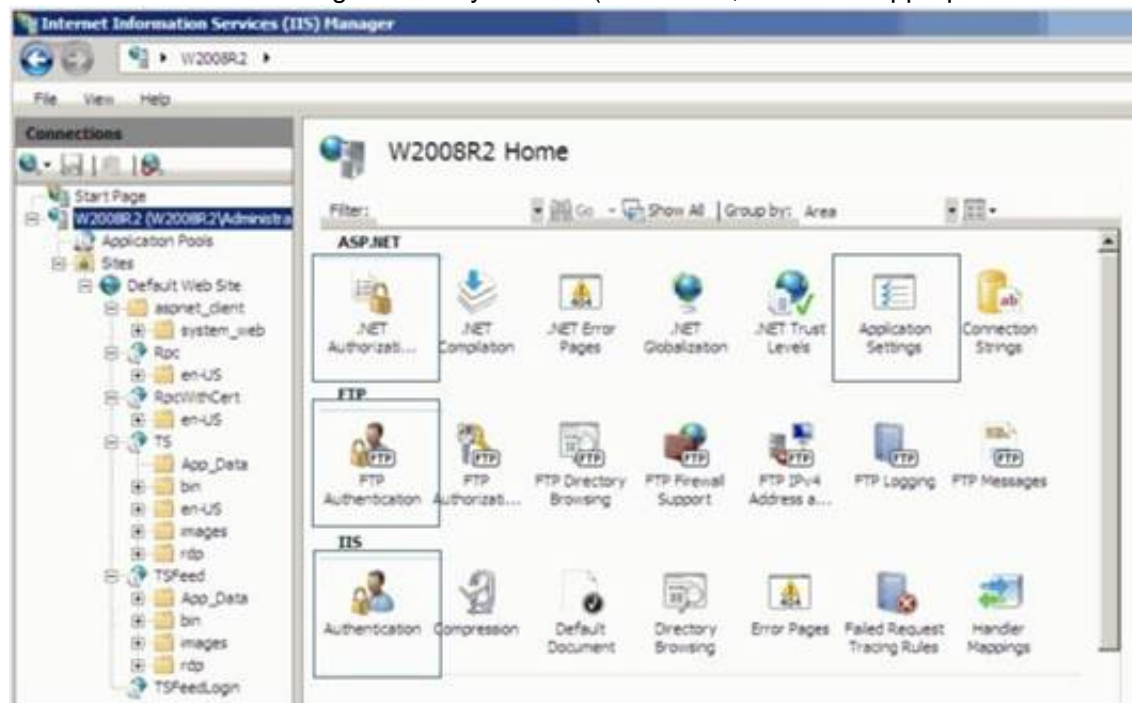
NEW QUESTION 89

HOTSPOT

You are configuring a web server for your school newspaper. The computer is running Windows Server 2008 R2 and Internet Information Services (OS).

You need to disable the ability for anonymous users to connect to the web server.

Which feature in IIS Manager should you use? (To answer, select the appropriate feature in the IIS Manager window in the answer area.)

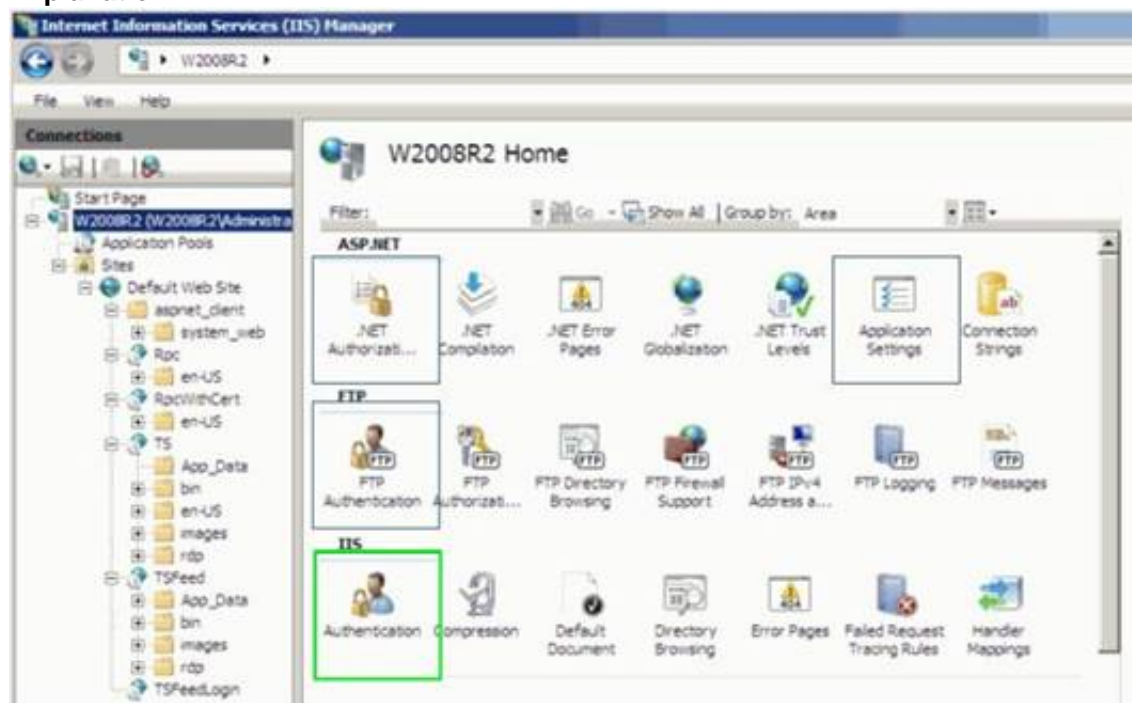


A. Mastered

B. Not Mastered

Answer: A

Explanation:



NEW QUESTION 90

You need to manage your server remotely as if you were seated in front of it. Which tool should you use?

A. Remote Desktop Client

B. Remote Desktop Session Host

C. Remote Desktop Gateway

D. Remote Server Administration Tools

Answer: D

Explanation:

Example: Remote Server Administration Tools for Windows 8.1 enables IT administrators to manage roles and features that are installed on computers that are running Windows Server 2012 or Windows Server 2012 R2 from a remote computer that is running Windows 8.1 Pro or Windows 8.1 Enterprise.

NEW QUESTION 95

You manage a Workgroup. You need to create a group for print administrators.

Which type of group should you create?

- A. Domain Local group
- B. Local group
- C. Global group
- D. Universal group

Answer: B

Explanation:

Many organizations deploy Windows servers and workstations in workgroup configurations and for these organizations, local group policies can play a vital role in simplifying Windows system administration.
Read more at http://tech.sportstoday.us/windows_server/windows-server-2008-r2---planning-workgroup-and-standalone-local-group-policy-configuration.aspx#iV1QJMxpiO0FVQyk.99

NEW QUESTION 100

Which tool would you use to retrieve detailed information about a significant occurrence in a computer system?

- A. Event Viewer
- B. System Information
- C. System Monitor
- D. Resource Monitor

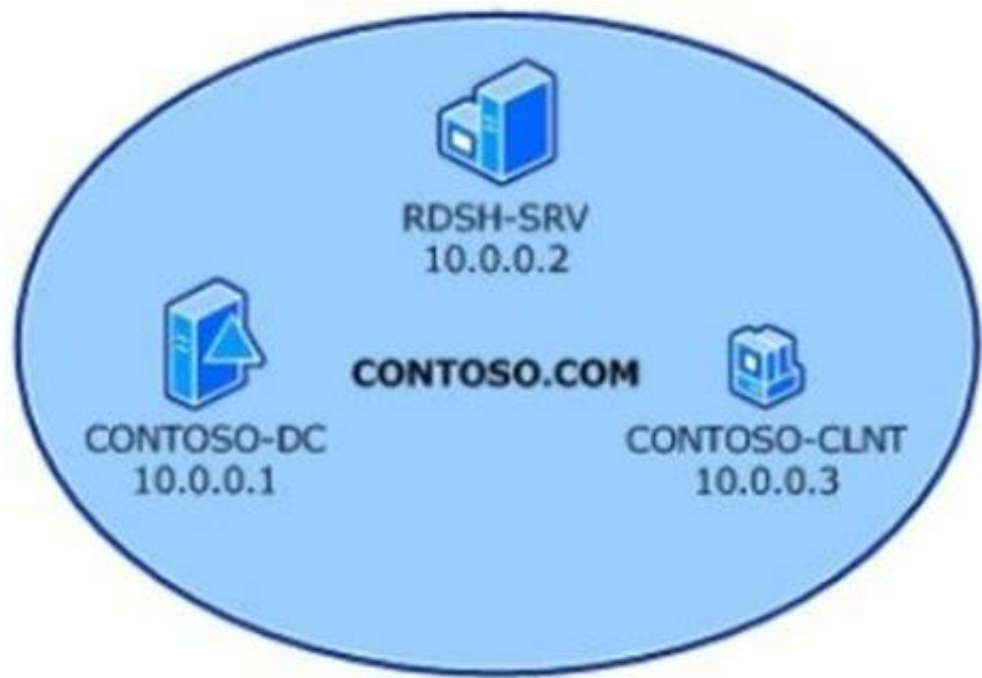
Answer: A

NEW QUESTION 105

HOTSPOT

You create a user account named user1 and an Active Directory Domain Services group named RDGroup in Active Directory Domain Services. The lab environment is shown in the following image:

Computer name	Operating system	Applications and services
RDSH-SRV	Windows Server 2008 R2	RD Session Host
CONTOSO-DC	Windows Server 2008 R2	Active Directory Domain Services, Domain Name System (DNS)
CONTOSO-CLNT	Windows® 7	Remote Desktop Connection



Use the drop-down menus to select the answer choice that completes each statement. Each correct selection is worth one point.

Answer Area

To enable only remote desktop access to the RDSH-SRV server for RDGroup, add RDGroup to the [answer choice] group on the host.

Remote Desktop Users
Users
Administrators

To enable restricted access to the RDSH-SRV server for user1, add user1 to the [answer choice] group in Active Directory.

RDGroup
Users
Administrators

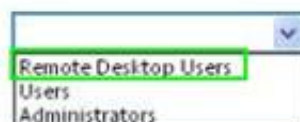
- A. Mastered
- B. Not Mastered

Answer: A

Explanation:

Answer Area

To enable only remote desktop access to the RDSH-SRV server for RDGroup, add RDGroup to the **[answer choice]** group on the host.



To enable restricted access to the RDSH-SRV server for user1, add user1 to the **[answer choice]** group in Active Directory.



NEW QUESTION 106

To change the boot device order of a computer, you should use:

- A. Device Manager.
- B. Disk Management.
- C. BIOS settings.
- D. Computer Policy.

Answer: C

Explanation:

Example: Change the Boot Order in BIOS

Turn on or restart your computer and watch for a message during the POST about a particular key, usually Del or F2, that you'll need to press to ...enter SETUP. Press this key as soon as you see the message.

Etc

NEW QUESTION 111

Which should you use to manage the working environments of users and computers in an Active Directory infrastructure?

- A. Active Directory Domains and Trusts
- B. Group Policy Objects
- C. Builtin containers
- D. Global security groups

Answer: B

Explanation:

A Group Policy Object (GPO) is a collection of settings that define what a system will look like and how it will behave for a defined group of users or computers.

NEW QUESTION 113

You need to ensure that Active Directory can be recovered in case of a server failure. Your backup must include the:

- A. Shared drives
- B. Page File
- C. System State
- D. Computer name

Answer: C

Explanation:

The System State data includes Active Directory and all other system components and services on which Active Directory is dependent.

NEW QUESTION 115

To protect a server in case of a blackout, you should use a/an:

- A. Uninterruptible Power Supply.
- B. Dedicated surge protector.
- C. Power Supply Unit.
- D. Redundant power supply.
- E. Hot-swappable power supply.
- F. Line conditioner.

Answer: A

NEW QUESTION 116

The University Chess Club has a single Windows Server 2008 R2 server. The server has 12 GB of RAM and 1TB of disk space on a RAID 5 array. Using this server, you need to install two separate instances of Windows Server 2008 R2: one to act as a web server and one to act as a database server.

Which Windows Server 2008 R2 role or feature provides this capability?

- A. Windows Deployment Services
- B. Hyper-V
- C. Windows System Resource Manager
- D. Windows Internal Database

Answer: A

Explanation:

Hyper-V can create virtual machines on x86-64 systems.

Starting with Windows 8, Hyper-V supersedes Windows Virtual PC as the hardware virtualization component of the client editions of Windows NT. A server computer running Hyper-V can be configured to expose individual virtual machines to one or more networks.

NEW QUESTION 120

Which is used to verify that a secure Web site is legitimate?

- A. Active Directory
- B. Enterprise trust
- C. Private key
- D. Digital certificate

Answer: D

NEW QUESTION 125

Which two are Windows Server Cluster types? (Choose two)

- A. Shared storage
- B. Failover
- C. Network Load Balancing (NLB)
- D. Shared services

Answer: BC

Explanation:

The difference between NLB and Windows Failover Cluster.

* An NLB array allows load to be spread amongst all the participating machines.

* A failover cluster provides high availability and redundancy, but doesn't spread the load.

* Only one server is live at any time, but the clustered application(s) can be moved to the other server very quickly.

NEW QUESTION 126

This question requires that you evaluate the underlined text to determine if it is correct. "Hardware-based RAID" uses system processing resources.

Select the correct answer if the underlined text does not make the statement correct. Select "No change is needed" if the underlined text makes the statement correct.

- A. Windows-based RAID
- B. RAID 10
- C. RAID 6
- D. No change is needed.

Answer: A

NEW QUESTION 128

You need to centralize administration of print servers and network printers. What should you use?

- A. Print Management
- B. Printers and Faxes
- C. Device Manager
- D. Print queue

Answer: A

Explanation:

There are two primary tools that you can use to administer a Windows print server in Windows Server 2008: Server Manager and Print Management.

NEW QUESTION 129

You create a new domain. Which two Active Directory objects will be available by default? (Choose two)

- A. Computer
- B. Employee
- C. User
- D. Device
- E. Server

Answer: AC

Explanation:

An Active Directory structure is an arrangement of information about objects. The objects fall into two broad categories: resources (e.g., printers) and security principals (user or computer accounts and groups). Security principals are assigned unique security identifiers (SIDs).

Note:

* Install-ADDSDomain

Installs a new Active Directory domain configuration.

NEW QUESTION 131

Which task is executed during the Power-On Self Test (POST)?

- A. The amount of system RAM is detected.
- B. The Master Boot Record is created.
- C. The operating system is initialized.
- D. Disk file systems are detected.

Answer: A

Explanation:

The principal duties of the main BIOS during POST are as follows:

verify CPU registers

verify the integrity of the BIOS code itself

verify some basic components like DMA, timer, interrupt controller

(A) find, size, and verify system main memory initialize BIOS

pass control to other specialized BIOSes (if and when required) identify, organize, and select which devices are available for booting

NEW QUESTION 136

A record of specific aspects of system performance over time is referred to as a/an:

- A. Threshold
- B. Log
- C. Event
- D. Alert

Answer: B

Explanation:

Working with Performance Logs

Applies To: Windows 7, Windows Server 2008 R2, Windows Server 2012, Windows Vista You can view log files or log data provided by a database in Performance Monitor to see a visual representation of performance data collected by Data Collector Sets.

NEW QUESTION 139

You need to install storage device drivers for a Windows boot partition. When should you do this?

- A. After you have started Windows for the first time
- B. Before creation of the RAID array
- C. During the post-boot phase
- D. During the installation phase

Answer: D

Explanation:

Example:

During the first phase of the Windows XP installation, Setup displays the following message at the bottom of the screen:

Press F6 if you have to install a third-party SCSI or RAID driver.

Press F6 and then follow the instructions to install a mass-storage device driver from your Original Equipment Manufacturer (OEM).

NEW QUESTION 144

Your network includes Windows Server 2003 and Windows Server 2008 domain controllers. You need to ensure that group policy change are applied immediately. Which tool should you use on the client computer?

- A. Groupware
- B. Windows update
- C. GPUpdate
- D. Policy Editor

Answer: C

Explanation:

GPUpdate

Refreshes local and Active Directory-based Group Policy settings, including security settings.

NEW QUESTION 147

Enabling additional users to handle administrative tasks for a particular object is referred to as:

- A. Redirection
- B. Assignment
- C. Targeting
- D. Delegation

Answer: D

Explanation:

In computing Delegation of Control is assigning a person or group specific administrative permissions for an Organizational Unit.

NEW QUESTION 150

One advantage of application virtualization is:

- A. Fewer operating system updates.
- B. Improved collaboration.
- C. Reduced network traffic.
- D. Reduced client administrative overhead.

Answer: D

Explanation:

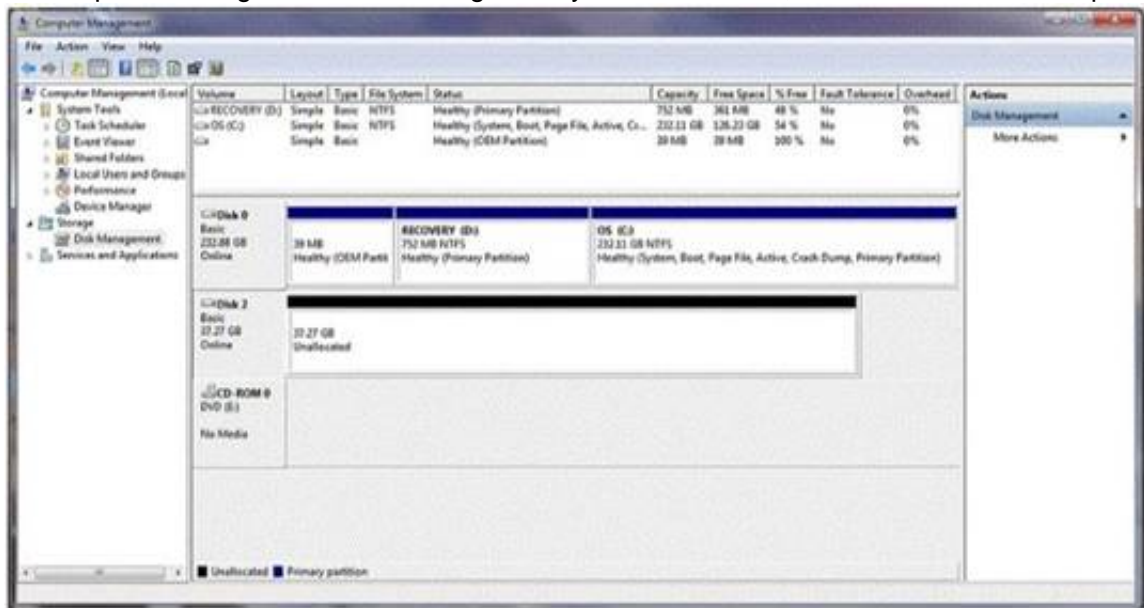
Virtualization is not just for the Fortune 500 anymore. SMBs are rapidly adopting virtualization and achieving significant benefits in a number of areas. Specifically, SMBs are seeing improvements in:

- * (D) Time spent on routine IT administrative tasks
- Backup and data protection
- Application availability
- Ability to respond to changing business needs
- Business continuity preparedness
- Company profitability and growth rate

NEW QUESTION 151

HOTSPOT

You buy a new USB hard drive for your server. After connecting the drive, you need to make this drive available to Windows. In Computer Management Disk Management you see the drive, but it is not visible in Explorer's Computer view, as shown in the following image:



Use the drop-down menus to select the answer choice that completes each statement. Each correct selection is worth one point.

Answer Area

You should create a [answer choice] volume on Disk 2.

simple
spanned
striped

You should format Disk 2 as [answer choice] to support compression.

exFAT
FAT32
NTFS

- A. Mastered
- B. Not Mastered

Answer: A

Explanation:

Answer Area

You should create a [answer choice] volume on Disk 2.

simple
spanned
striped

You should format Disk 2 as [answer choice] to support compression.

exFAT
FAT32
NTFS

NEW QUESTION 153

Which Hyper-V network type shares the host's physical network adapter?

- A. External
- B. Public
- C. Private
- D. Internal

Answer: A

Explanation:

For Hyper-V host networking, the most common option is to create an external access virtual switch. This allows VMs on the host to access other systems on a traditional VLAN or standard switched network.

NEW QUESTION 158

You manage a company's Active Directory. You need to delegate the control of a branch office to a set of administrators. Where would you place the users and computers that belong to the branch office?

- A. In a distribution group
- B. In an Organizational Unit
- C. In the root of the domain
- D. In the Built-in container

Answer: B

NEW QUESTION 162

What should you use to prevent power spikes from harming a server?

- A. Power supply unit
- B. Hot-swappable power supply
- C. Dedicated surge protector
- D. Line conditioner

Answer: C

Explanation:

Dedicated surge protectors protect specific items, such as servers, from surges.
A surge occurs when too much electricity (technically too much voltage) flows through to the item.
Reference: <http://romitti.com/2015/02/dedicated-surge-protectors/>

NEW QUESTION 164

DRAG DROP

In which order are group policies applied?

(To answer, move the appropriate scopes from the list of scopes to the answer area and arrange them from first applied to last applied)

Scopes

Domain

Local

Organizational Unit

Site

Answer Area

- A. Mastered
- B. Not Mastered

Answer: A

Explanation:

Scopes	Answer Area
Domain	Local
Local	Site
Organizational Unit	Domain
Site	Organizational Unit

NEW QUESTION 166

You configure Volume Shadow Copy Service (VSS) to save previous versions of a shared folder. By default, the copies of shared folders are stored in:

- A. A Network Attached Storage (NAS) device.
- B. A Distributed File System (DFS) share.
- C. A failover cluster.
- D. A local volume.

Answer: D

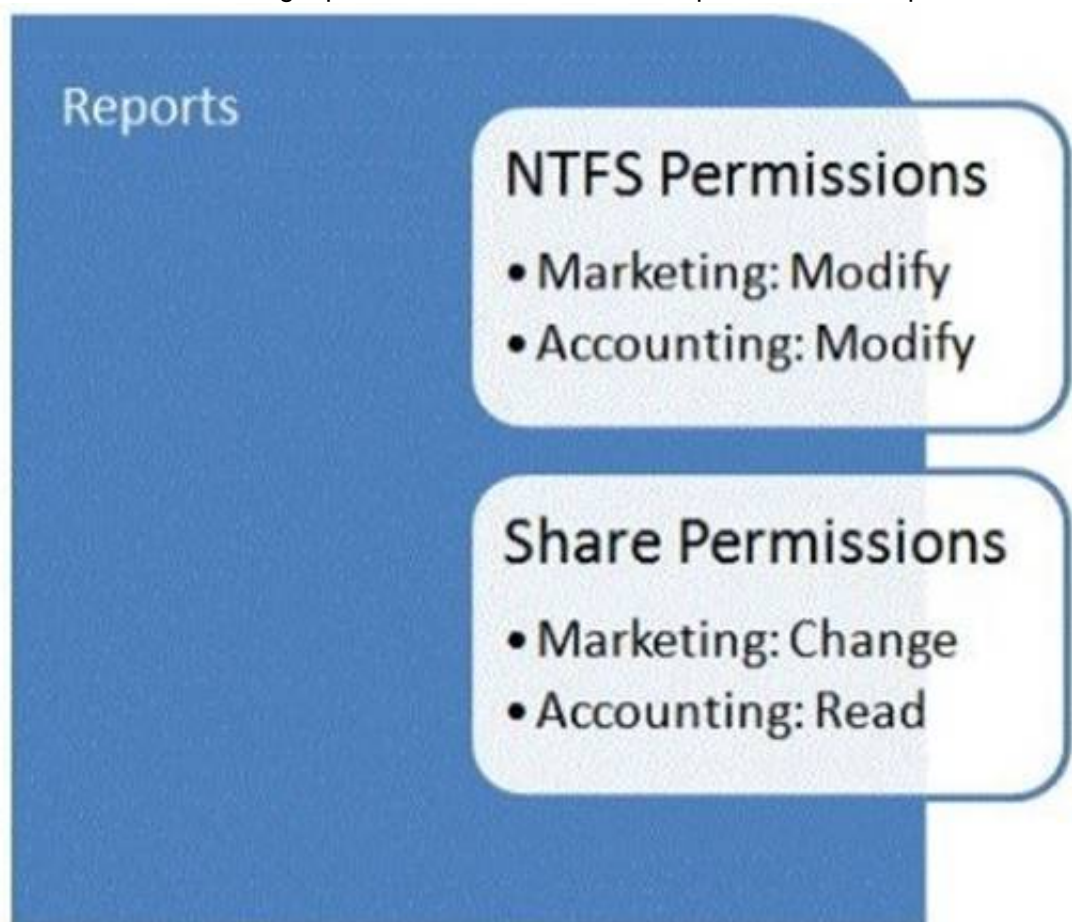
Explanation:

Shadow Copy technology requires the file system to be NTFS to be able to create and store shadow copies. Shadow Copies can be created on local and external (removable or network) volumes by any Windows component that uses this technology, such as when creating a scheduled Windows Backup or automatic System Restore point.

NEW QUESTION 168

HOTSPOT

You are troubleshooting a permissions issue with the Reports share. The permissions are shown in the following image:



The groups connect to the share.

Use the drop-down menus to select the answer choice that answers each question. Each correct selection is worth one point.

Answer Area

Accounting

Read
Modify
Full Control

Marketing

Read
Modify
Full Control

- A. Mastered
- B. Not Mastered

Answer: A

Explanation:

Answer Area

Accounting

Read
Modify
Full Control

Marketing

Read
Modify
Full Control

NEW QUESTION 171

HOTSPOT

For each of the following statements, select Yes if the statement is true. Otherwise, select No. Each correct selection is worth one point.

Answer Area

	Yes	No
A Windows Server 2008 R2 server that has an operations master role must also be a domain controller.	<input type="radio"/>	<input type="radio"/>
A single Windows Server 2008 R2 server may only be assigned a maximum of one operations master role.	<input type="radio"/>	<input type="radio"/>
Some operations master roles are assigned per domain, while others only need to be assigned to the forest.	<input type="radio"/>	<input type="radio"/>

- A. Mastered
- B. Not Mastered

Answer: A

Explanation:

Answer Area

	Yes	No
A Windows Server 2008 R2 server that has an operations master role must also be a domain controller.	<input checked="" type="radio"/>	<input type="radio"/>
A single Windows Server 2008 R2 server may only be assigned a maximum of one operations master role.	<input type="radio"/>	<input checked="" type="radio"/>
Some operations master roles are assigned per domain, while others only need to be assigned to the forest.	<input checked="" type="radio"/>	<input type="radio"/>

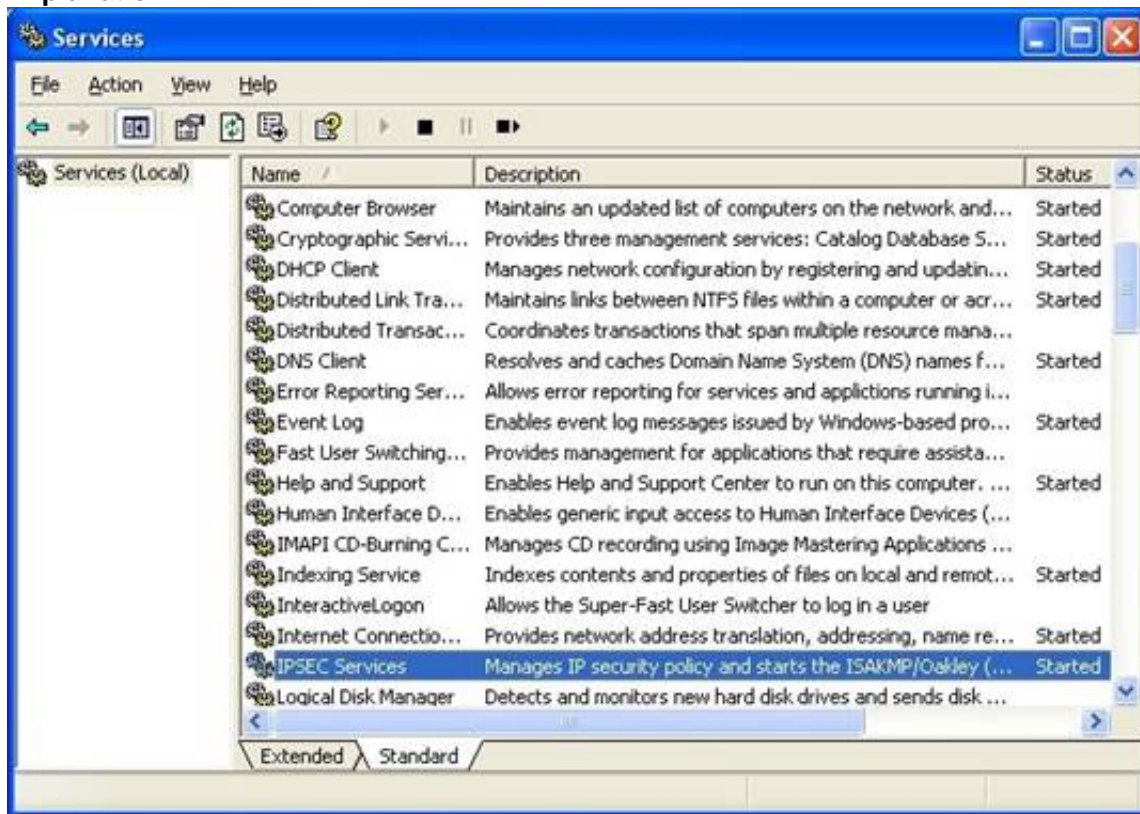
NEW QUESTION 174

You are using the Services Management Console. Which term is used to describe a service that is running?

- A. Started
- B. Activated
- C. Engaged
- D. Working

Answer: A

Explanation:



<http://www.ucs.cam.ac.uk/docs/leaflets/g53/vpn1.jpg>

NEW QUESTION 177

Which two specifications are included in Microsoft's hardware requirements for Windows Server? (Choose two)

- A. USB ports
- B. RAM
- C. Processor speed
- D. Disk I/O

Answer: BC

Explanation:

Example:

System Requirements for Windows Server 2012 Essentials

* CPU socket

1.4 GHz (64-bit processor) or faster for single core

1.3 GHz (64-bit processor) or faster for multi-core

* Memory (RAM) 2 GB

* Hard disk

* 160 GB hard disk with a 60 GB system partition

NEW QUESTION 180

.....

About ExamBible

Your Partner of IT Exam

Found in 1998

ExamBible is a company specialized on providing high quality IT exam practice study materials, especially Cisco CCNA, CCDA, CCNP, CCIE, Checkpoint CCSE, CompTIA A+, Network+ certification practice exams and so on. We guarantee that the candidates will not only pass any IT exam at the first attempt but also get profound understanding about the certificates they have got. There are so many alike companies in this industry, however, ExamBible has its unique advantages that other companies could not achieve.

Our Advances

* 99.9% Uptime

All examinations will be up to date.

* 24/7 Quality Support

We will provide service round the clock.

* 100% Pass Rate

Our guarantee that you will pass the exam.

* Unique Gurantee

If you do not pass the exam at the first time, we will not only arrange FULL REFUND for you, but also provide you another exam of your claim, ABSOLUTELY FREE!

NEW QUESTION 1

Users report that they are unable to print. You verify that the print spooler service is running. What should you do next?

- A. Purge the service
- B. Disable the service
- C. Pause the service
- D. Restart the service

Answer: D

NEW QUESTION 2

To convert a disk from dynamic to basic, you must first:

- A. Mirror all disk volumes.
- B. Connect the disk to a different controller.
- C. Delete all disk volumes.
- D. Format all disk volumes in the NTFS file system.

Answer: C

Explanation:

To change a dynamic disk back to a basic disk using the Windows interface
? Back up all volumes on the disk you want to convert from dynamic to basic.
? In Disk Management, right-click each volume on the dynamic disk you want to convert to a basic disk, and then click Delete Volume for each volume on the disk.
? When all volumes on the disk have been deleted, right-click the disk, and then click Convert to Basic Disk.

NEW QUESTION 3

HOTSPOT

For each of the following statements, select Yes if the statement is true. Otherwise, select No. Each correct selection is worth one point.

Answer Area

	Yes	No
A 32-bit client machine can use the 64-bit version of a printer driver.	<input type="radio"/>	<input type="radio"/>
A server can have multiple driver types installed for a single printer.	<input type="radio"/>	<input type="radio"/>
The print server must be 64-bit to support 64-bit and 32-bit clients.	<input type="radio"/>	<input type="radio"/>

- A. Mastered
- B. Not Mastered

Answer: A

Explanation:

Answer Area

	Yes	No
A 32-bit client machine can use the 64-bit version of a printer driver.	<input type="radio"/>	<input checked="" type="radio"/>
A server can have multiple driver types installed for a single printer.	<input checked="" type="radio"/>	<input type="radio"/>
The print server must be 64-bit to support 64-bit and 32-bit clients.	<input checked="" type="radio"/>	<input type="radio"/>

NEW QUESTION 4

Which storage technology supports speeds up to 16 Gbps?

- A. Network File System (NFS)
- B. Small Computer System Interface (SCSI)
- C. Serial Advanced Technology Attachment (SATA)
- D. Fibre Channel (FC)

Answer: D

Explanation:

Fibre Channel, or FC, is a high-speed network technology (commonly running at 2-, 4-, 8- and 16-gigabit per second rates) primarily used to connect computer data storage.

Reference: http://en.wikipedia.org/wiki/Fibre_Channel

NEW QUESTION 5

This question requires that you evaluate the underlined text to determine if it is correct.

You install a new Windows Server 2008 R2 server for your school athletic department. The installation completes without errors. However, the new server is unable to communicate with the network. After checking cable connections and network configuration, you find that no network connections are listed in the Control Panel/Network Connections applet.

You should use "Device Manager" to investigate a potential problem with the network adapter driver.

Select the correct answer if the underlined text does not make the statement correct. Select "No change is needed" if the underlined text makes the statement correct

- A. Network and Sharing Center
- B. Control Panel/Network Connections
- C. Server Manager/WMI Control
- D. No change is needed

Answer: D

Explanation:

The Device Manager is a Control Panel applet in Microsoft Windows operating systems. It allows users to view and control the hardware attached to the computer. When a piece of hardware is not working, the offending hardware is highlighted for the user to deal with.

Reference: http://en.wikipedia.org/wiki/Device_Manager

NEW QUESTION 6

You manage the servers for the School of Business at your university. The school has a Hyper-V server that runs three virtual machines (VMs). Each VM runs Windows Server 2008 R2.

You need to apply the latest Windows server updates to each of the VMs. You need to be able to revert the servers back to their original state before applying the updates.

Which Microsoft Virtualization feature should you use?

- A. Live Migration
- B. Snapshots
- C. VHD Virtual Hard Disks
- D. Failover Cluster

Answer: B

Explanation:

Snapshots provide a fast and easy way to revert the virtual machine to a previous state.

NEW QUESTION 7

What are two functions of the Group Policy loopback feature? (Choose two.)

- A. Apply Group Policy Objects for only the current site.
- B. Apply Group Policy Objects that depend only on the computer the user logs on to.
- C. Apply only the local computer Group Policy Object.
- D. Give higher precedence to computer policy over user policy.

Answer: BD

Explanation:

Loopback processing of Group Policy has two different modes, Replace and Merge.

* (B) Replace mode replaces User Configuration with the one applied to the Computer.

* (D) In Merge mode, if there is a conflict, for example two policies provide different values for the same configuration setting, the Computer's policy has more privilege compared to the user policy.

Reference: <http://kudratsapaev.blogspot.se/2009/07/loopback-processing-of-group-policy.html>

NEW QUESTION 8

Which RAID level mirrors a set of disks and then stripes across the disks?

- A. RAID 0
- B. RAID 1
- C. RAID 5
- D. RAID 10

Answer: D

Explanation:

A RAID 1+0, sometimes called RAID 1&0 or RAID 10. RAID 10 is a stripe of mirrors.

NEW QUESTION 9

You need to find a list of specific events. What should you do?

- A. Export the events to a .doc file.
- B. Clear the log by saving it.
- C. Filter by creating a custom view.
- D. Use the Search menu option.

Answer: C

Explanation:

Quickly Filter Event Logs in Windows Server 2008

The Event Viewer automatically creates several filtered views of the event logs. Filtered views are listed under the Custom Views node.

NEW QUESTION 10

Which disk types can be used for internal storage?

- A. SAN/iSCSI
- B. NFS/Distributed File System (DFS)
- C. PATA/SATA/SCSI
- D. NAS/Fiber-channel

Answer: C

NEW QUESTION 10

Which technology is designed to help teams collaborate?

- A. Microsoft SharePoint Server
- B. Microsoft System Center Operations Manager
- C. Microsoft Forefront Identity Manager
- D. Microsoft BizTalk Server

Answer: A

Explanation:

* Organizations use SharePoint to create websites. You can use it as a secure place to store, organize, share, and access information from almost any device. All you need is a web browser, such as Internet Explorer, Chrome, or Firefox.

* SharePoint Workspace A desktop program that you can use to take SharePoint site content offline and collaborate on the content with others while you are disconnected from the network. While you and other team members are offline, you can make changes to

* SharePoint content that will eventually synchronize back to the SharePoint site.

Incorrect:

not B: System Center 2012 – Operations Manager provides infrastructure monitoring that is flexible and cost-effective, helps ensure the predictable performance and availability of vital applications, and offers comprehensive monitoring for your datacenter and cloud, both private and public.

Not C: Microsoft Forefront Identity Manager 2010 R2 delivers self-service identity management for users, automates lifecycle management across heterogeneous platforms for administrators, and provides a rich policy framework for enforcing corporate security policies.

Not D: Microsoft BizTalk Server (or simply "BizTalk") enables companies to automate business processes, through the use of adapters which are tailored to communicate with different software systems used in an enterprise.

NEW QUESTION 14

The owner of Fourth Coffee wants to add a new computer to the company network. The owner configures the Host Address for the computer but still cannot connect to the network.

Which component should the owner use to connect to the network?

- A. DNS Server
- B. DHCP address
- C. Subnet mask
- D. Domain name

Answer: C

Explanation:

The second item the subnet mask is missing here. It is required for TCP/IP to work.

Reference: Understanding TCP/IP addressing and subnetting basics <https://support.microsoft.com/en-us/kb/164015>

NEW QUESTION 19

This question requires that you evaluate the underlined text to determine if it is correct.

Active Directory "Distribution groups" can only be assigned permissions to resources within the same domain but can have members from other domains.

Select the correct answer if the underlined text does not make the statement correct. Select 'No change is needed' if the underlined text makes the statement correct.

- A. Global groups
- B. Universal groups
- C. Domain local groups
- D. No change is needed

Answer: C

Explanation:

Distributions groups are used as recipients of email messages.

Domain local groups:

* Member permissions can be assigned only within the same domain as the parent domain local group

* Group can include as member: Accounts from any domain Global groups from any domain

Universal groups from any domain

Reference: Group scope

<https://technet.microsoft.com/en-us/library/cc755692%28v=ws.10%29.aspx>

Domain local groups but only from the same domain as the parent domain local group

NEW QUESTION 21

Which file extension indicates a Hyper-V virtual disk file?

- A. Mastered
- B. Not Mastered

Answer: A

Explanation:

* . VHD (file format)

VHD (Virtual Hard Disk) is a file format which represents a virtual hard disk drive (HDD). It may contain what is found on a physical HDD, such as disk partitions and a file system, which in turn can contain files and folders. It is typically used as the hard disk of a virtual machine.

* Virtual Hard Disk format was initially used only by Microsoft Virtual PC (and Microsoft Virtual Server). Later however, Microsoft used the VHD format in Hyper-V, the hypervisor- based virtualization technology of Windows Server 2008.

NEW QUESTION 25

Which technology provides both e-mail and database services?

- A. Windows Server Enterprise Edition
- B. Microsoft Office Communications Server
- C. Windows Small Business Server
- D. Microsoft Project Server

Answer: C

Explanation:

Windows Small Business Server is available in Essentials, Standard, and Premium editions. Essentials is a scaled down version for 1-25 users, both the other editions are based on the Windows Server codebase and include Microsoft Exchange Server mail server, Internet Information Services (IIS) web server, Windows SharePoint Services for collaboration, Microsoft Office Outlook 2003 email client (not included in 2008), Routing and Remote Access Service (RRAS), Windows Server Update Services for update management across the network, and a Fax server. Up to SBS 2003, the Premium edition also included Microsoft SQL Server, Microsoft Internet Security and Acceleration Server and Microsoft Office FrontPage 2003.

NEW QUESTION 27

HOTSPOT

For each of the following statements, select Yes if the statement is true. Otherwise, select No. Each correct selection is worth one point.

Answer Area

	Yes	No
An organizational unit can only contain objects within its parent domain.	<input type="radio"/>	<input type="radio"/>
Two organizational units from different domains can share objects.	<input type="radio"/>	<input type="radio"/>
An organizational unit administrator requires domain administrator rights.	<input type="radio"/>	<input type="radio"/>

- A. Mastered
- B. Not Mastered

Answer: A

Explanation:

Answer Area

	Yes	No
An organizational unit can only contain objects within its parent domain.	<input checked="" type="radio"/>	<input type="radio"/>
Two organizational units from different domains can share objects.	<input type="radio"/>	<input checked="" type="radio"/>
An organizational unit administrator requires domain administrator rights.	<input type="radio"/>	<input checked="" type="radio"/>

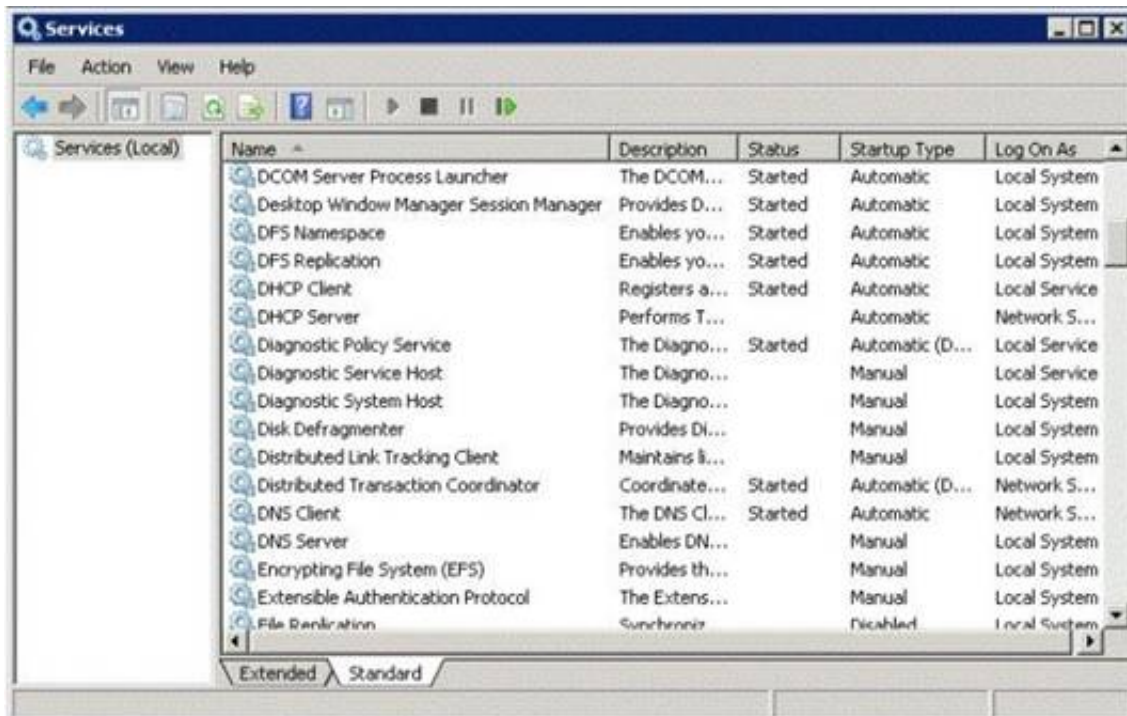
NEW QUESTION 32

HOTSPOT

You restart the Windows Server 2008 R2 server for your computer lab.

After the restart, a workstation cannot connect to any local network resource. Other workstations in the lab can connect to local network resources, but cannot browse the Internet.

The Services console is shown in the following image:



Use the drop-down menus to select the answer choice that completes each statement. Each correct selection is worth one point.

Answer Area

Changing the status of the DHCP Server service to [answer choice] allows the users to receive working IP addresses.

Resume
Automatic
Started

Setting the DNS Server service startup type to [answer choice] restores name resolution services when the server is rebooted.

Manual
Automatic
Started

- A. Mastered
- B. Not Mastered

Answer: A

Explanation:

Answer Area

Changing the status of the DHCP Server service to [answer choice] allows the users to receive working IP addresses.

Resume
Automatic
Started

Setting the DNS Server service startup type to [answer choice] restores name resolution services when the server is rebooted.

Manual
Automatic
Started

NEW QUESTION 36

Which two components are required to configure a TCP/IP connection? (Choose two)

- A. Subnet mask
- B. DHCP address
- C. Host address
- D. Domain name

Answer: AB

Explanation:

An IP address and a subnet mask.

NEW QUESTION 40

Which task can you accomplish by using Organizational Units?

- A. Apply shared folder permissions to users
- B. Place different domains in a centralized manageable environment
- C. Create a secondary Active Directory
- D. Logically represent a hierarchical structure of your company

Answer: D

Explanation:

A particularly useful type of directory object contained within domains is the organizational unit. Organizational units are Active Directory containers into which you can place users, groups, computers, and other organizational units. An organizational unit cannot contain objects from other domains.

An organizational unit is the smallest scope or unit to which you can assign Group Policy settings or delegate administrative authority. Using organizational units, you can create containers within a domain that represent the hierarchical, logical structures within your organization.

NEW QUESTION 41

This question requires that you evaluate the underlined text to determine if it is correct. You need to troubleshoot network environment problems. First, you define the issues that are most likely causing the symptoms. Then you eliminate each issue until the symptoms disappear. This approach is referred to as "performance" troubleshooting. Select the correct answer if the underlined text does not make the statement correct. Select "No change is needed" if the underlined text makes the statement correct.

- A. Systematic
- B. Specific
- C. Trial and error
- D. No change is needed

Answer: A

Explanation:

The ability to troubleshoot effectively reduces downtime and increases safety.
A Systematic approach brings efficiencies to the process of troubleshooting. Preparation
Step 1: Observe Behavior
Step 2: Define Problem Area Step 3: Identify Possible causes
Step 4: Determine Most Probable cause Step 5: Test and Repair
Follow-up
Reference: <http://www.troubleshootingskills.com/how-it-works/systematic-approach/>

NEW QUESTION 46

What is the minimum number of disks required for RAID 5?

- A. 1
- B. 2
- C. 3
- D. 5

Answer: :C

Explanation:

You would need two disks for data and one for parity.

NEW QUESTION 51

The manager at the coffee house where you work asks for advice on adding storage to the store's server to perform backups. The additional storage must meet the following requirements:
? Hold at least 600 GB
? Be reasonably priced
? Be reasonably fast
Which solution should you recommend?

- A. USB hard drive
- B. USB flash drive
- C. SCSI tape backup system
- D. External SCSI hard drive

Answer: C

NEW QUESTION 55

You need to manage a Windows Server 2008 server from a Windows client computer by using a Management Console. What should you install on the client computer?

- A. Remote Assistance
- B. Remote Server Administration Tools
- C. Windows Server Resource Kit
- D. Microsoft Office SharePoint Server

Answer: B

Explanation:

Example: Remote Server Administration Tools for Windows 8.1 enables IT administrators to manage roles and features that are installed on computers that are running Windows Server 2012 or Windows Server 2012 R2 from a remote computer that is running Windows 8.1 Pro or Windows 8.1 Enterprise.

NEW QUESTION 60

Which RAID level can consist of two disks and provides redundancy?

- A. RAID 0
- B. RAID 1
- C. RAID 5
- D. RAID 10

Answer: B

NEW QUESTION 61

HOTSPOT

For each of the following statements, select Yes if the statement is true. Otherwise, select No. Each correct selection is worth one point.

Answer Area

	Yes	No
Active Directory groups can be used to assign permissions on a shared folder on a member server.	<input type="radio"/>	<input type="radio"/>
Active Directory groups can be linked to Active Directory group policies.	<input type="radio"/>	<input type="radio"/>
Local groups on a member server can be members of global groups in a domain.	<input type="radio"/>	<input type="radio"/>

- A. Mastered
- B. Not Mastered

Answer: A

Explanation:

Answer Area

	Yes	No
Active Directory groups can be used to assign permissions on a shared folder on a member server.	<input checked="" type="radio"/>	<input type="radio"/>
Active Directory groups can be linked to Active Directory group policies.	<input checked="" type="radio"/>	<input type="radio"/>
Local groups on a member server can be members of global groups in a domain.	<input type="radio"/>	<input checked="" type="radio"/>

NEW QUESTION 66

A domain controller that is designated to perform a set of specialized domain controller tasks is commonly referred to as a/an:

- A. Windows Internet Name Service (WINS) server
- B. Operations Master
- C. Organizational Unit
- D. Primary domain controller

Answer: B

Explanation:

Operations Master Roles
The five operations master roles are assigned automatically when the first domain controller in a given domain is created.

NEW QUESTION 69

By default, which group can create and link Group Policy Objects?

- A. Authenticated Users
- B. Domain Users
- C. Domain Administrators
- D. Local Administrators

Answer: :C

Explanation:

The Domain Administrators are the only people who can create GPOs by default.

NEW QUESTION 70

Which technology is designed to host calendars, contacts, and e-mail on the server?

- A. Microsoft Host Integration Server
- B. Microsoft Expression Studio
- C. Microsoft SQL Server
- D. Microsoft Exchange Server

Answer: D

NEW QUESTION 72

What is required to create a volume mount point?

- A. A dynamic disk
- B. RAID 1 implementation
- C. An NTFS file system volume or partition
- D. Extended volumes

Answer: C

Explanation:

A volume mount point can be placed in any empty folder of the host NTFS volume.

NEW QUESTION 77

Which technology is used to create and manage relational databases?

- A. Microsoft Exchange Server
- B. Microsoft Commerce Server
- C. Microsoft Groove Server
- D. Microsoft SQL Server

Answer: D

Explanation:

SQL Server databases are relational.

NEW QUESTION 78

You need to access resources located in another forest. Which should you create?

- A. Child domain
- B. Distribution group
- C. Trust
- D. Organizational unit

Answer: D

NEW QUESTION 80

This question requires that you evaluate the underlined text to determine if it is correct.

"Microsoft App-V" can make applications available to end user computers without having to install the applications on those computers.

Select the correct answer if the underlined text does not make the statement correct. Select 'No change is needed' if the underlined text makes the statement correct.

- A. Microsoft Hyper-V
- B. DirectAccess
- C. Windows Deployment Services
- D. No change is needed.

Answer: D

Explanation:

Microsoft Application Virtualization (MS App-V) platform allows applications to be deployed ("streamed") in real-time to any client from a virtual application server. It removes the need for traditional local installation of the applications.

Reference: http://en.wikipedia.org/wiki/Microsoft_App-V

NEW QUESTION 81

This question requires that you evaluate the underlined text to determine if it is correct. Settings from the "Local" Group Policy Object are processed last during logon.

Select the correct answer if the underlined text does not make the statement correct. Select 'No change is needed' if the underlined text makes the statement correct.

- A. Site
- B. Organizational Unit
- C. Domain
- D. No change is needed.

Answer: B

Explanation:

Group Policy settings are processed in the following order:

1. Local Group Policy object

2. Site

3. Domain

4. Organizational Unit

Reference: Group Policy processing and precedence <https://technet.microsoft.com/en-us/library/cc785665%28v=ws.10%29.aspx>

NEW QUESTION 84

You need to apply a Windows Server 2008 group policy. You also need to prevent policies that are applied at lower levels from affecting this new policy. What should you do?

- A. Set the policy to Loopback
- B. Set the permission to Full Control
- C. Select the Enforced policy link setting
- D. Select the Enabled policy link setting

Answer: C

Explanation:

Example:

To enforce a Group Policy object link

? In the Group Policy Management Console (GPMC) console tree, double-click the

forest containing the domain, site, or organizational unit (OU) containing the link you want to enforce, and then do one of the following:

? Right-click the GPO link, and then click Enforced to enable or disable enforcing the

link. A check mark next to Enforced indicates that the link is enforced.

NEW QUESTION 89

HOTSPOT

You are configuring a web server for your school newspaper. The computer is running Windows Server 2008 R2 and Internet Information Services (OS).

You need to disable the ability for anonymous users to connect to the web server.

Which feature in IIS Manager should you use? (To answer, select the appropriate feature in the IIS Manager window in the answer area.)

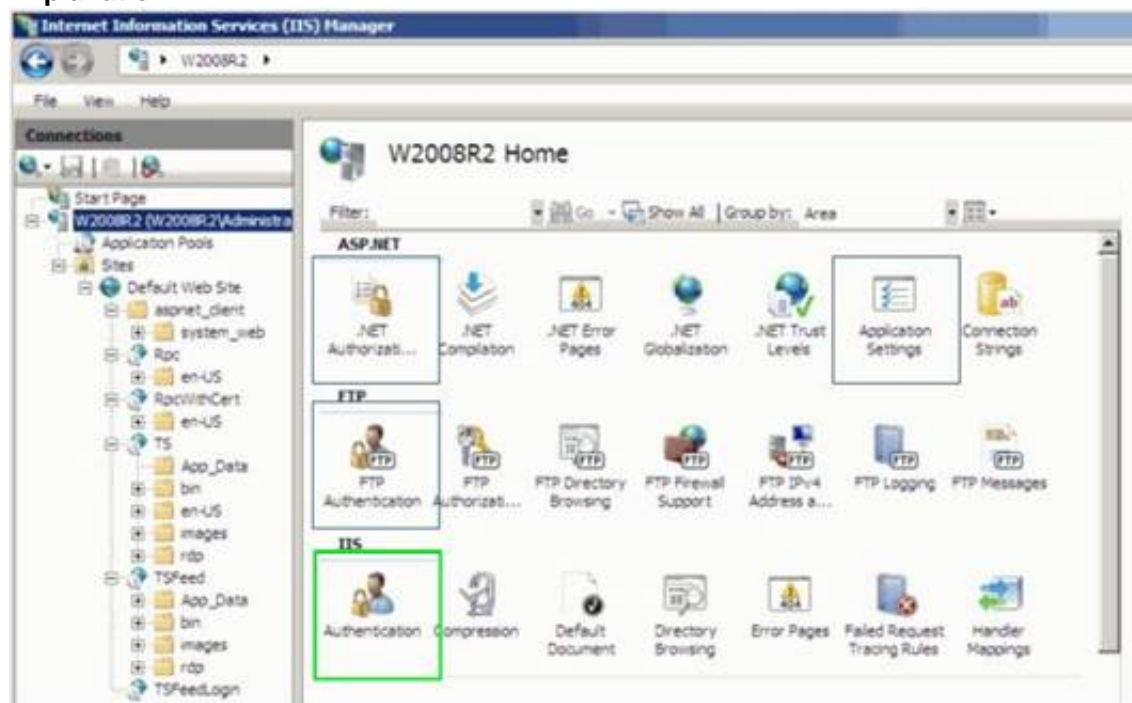


A. Mastered

B. Not Mastered

Answer: A

Explanation:



NEW QUESTION 90

You need to manage your server remotely as if you were seated in front of it. Which tool should you use?

A. Remote Desktop Client

B. Remote Desktop Session Host

C. Remote Desktop Gateway

D. Remote Server Administration Tools

Answer: D

Explanation:

Example: Remote Server Administration Tools for Windows 8.1 enables IT administrators to manage roles and features that are installed on computers that are running Windows Server 2012 or Windows Server 2012 R2 from a remote computer that is running Windows 8.1 Pro or Windows 8.1 Enterprise.

NEW QUESTION 95

You manage a Workgroup. You need to create a group for print administrators.

Which type of group should you create?

- A. Domain Local group
- B. Local group
- C. Global group
- D. Universal group

Answer: B

Explanation:

Many organizations deploy Windows servers and workstations in workgroup configurations and for these organizations, local group policies can play a vital role in simplifying Windows system administration.
Read more at http://tech.sportstoday.us/windows_server/windows-server-2008-r2---planning-workgroup-and-standalone-local-group-policy-configuration.aspx#iV1QJMxpiO0FVQyk.99

NEW QUESTION 100

Which tool would you use to retrieve detailed information about a significant occurrence in a computer system?

- A. Event Viewer
- B. System Information
- C. System Monitor
- D. Resource Monitor

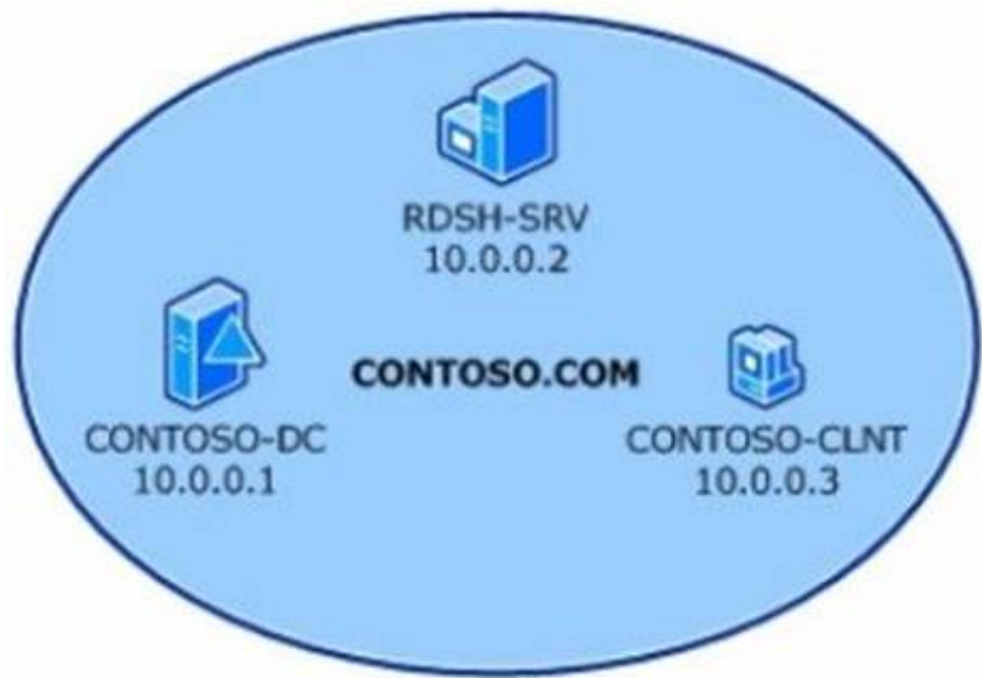
Answer: A

NEW QUESTION 105

HOTSPOT

You create a user account named user1 and an Active Directory Domain Services group named RDGroup in Active Directory Domain Services. The lab environment is shown in the following image:

Computer name	Operating system	Applications and services
RDSH-SRV	Windows Server 2008 R2	RD Session Host
CONTOSO-DC	Windows Server 2008 R2	Active Directory Domain Services, Domain Name System (DNS)
CONTOSO-CLNT	Windows® 7	Remote Desktop Connection



Use the drop-down menus to select the answer choice that completes each statement. Each correct selection is worth one point.

Answer Area

To enable only remote desktop access to the RDSH-SRV server for RDGroup, add RDGroup to the [answer choice] group on the host.

Remote Desktop Users
Users
Administrators

To enable restricted access to the RDSH-SRV server for user1, add user1 to the [answer choice] group in Active Directory.

RDGroup
Users
Administrators

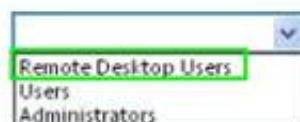
- A. Mastered
- B. Not Mastered

Answer: A

Explanation:

Answer Area

To enable only remote desktop access to the RDSH-SRV server for RDGroup, add RDGroup to the [answer choice] group on the host.



To enable restricted access to the RDSH-SRV server for user1, add user1 to the [answer choice] group in Active Directory.



NEW QUESTION 106

To change the boot device order of a computer, you should use:

- A. Device Manager.
- B. Disk Management.
- C. BIOS settings.
- D. Computer Policy.

Answer: C

Explanation:

Example: Change the Boot Order in BIOS

Turn on or restart your computer and watch for a message during the POST about a particular key, usually Del or F2, that you'll need to press to ...enter SETUP.

Press this key as soon as you see the message.

Etc

NEW QUESTION 111

Which should you use to manage the working environments of users and computers in an Active Directory infrastructure?

- A. Active Directory Domains and Trusts
- B. Group Policy Objects
- C. Builtin containers
- D. Global security groups

Answer: B

Explanation:

A Group Policy Object (GPO) is a collection of settings that define what a system will look like and how it will behave for a defined group of users or computers.

NEW QUESTION 113

You need to ensure that Active Directory can be recovered in case of a server failure. Your backup must include the:

- A. Shared drives
- B. Page File
- C. System State
- D. Computer name

Answer: C

Explanation:

The System State data includes Active Directory and all other system components and services on which Active Directory is dependent.

NEW QUESTION 115

To protect a server in case of a blackout, you should use a/an:

- A. Uninterruptible Power Supply.
- B. Dedicated surge protector.
- C. Power Supply Unit.
- D. Redundant power supply.
- E. Hot-swappable power supply.
- F. Line conditioner.

Answer: A

NEW QUESTION 116

The University Chess Club has a single Windows Server 2008 R2 server. The server has 12 GB of RAM and 1TB of disk space on a RAID 5 array. Using this server, you need to install two separate instances of Windows Server 2008 R2: one to act as a web server and one to act as a database server.

Which Windows Server 2008 R2 role or feature provides this capability?

- A. Windows Deployment Services
- B. Hyper-V
- C. Windows System Resource Manager
- D. Windows Internal Database

Answer: A

Explanation:

Hyper-V can create virtual machines on x86-64 systems.

Starting with Windows 8, Hyper-V supersedes Windows Virtual PC as the hardware virtualization component of the client editions of Windows NT. A server computer running Hyper-V can be configured to expose individual virtual machines to one or more networks.

NEW QUESTION 120

Which is used to verify that a secure Web site is legitimate?

- A. Active Directory
- B. Enterprise trust
- C. Private key
- D. Digital certificate

Answer: D

NEW QUESTION 125

Which two are Windows Server Cluster types? (Choose two)

- A. Shared storage
- B. Failover
- C. Network Load Balancing (NLB)
- D. Shared services

Answer: BC

Explanation:

The difference between NLB and Windows Failover Cluster.

- * An NLB array allows load to be spread amongst all the participating machines.
- * A failover cluster provides high availability and redundancy, but doesn't spread the load.
- * Only one server is live at any time, but the clustered application(s) can be moved to the other server very quickly.

NEW QUESTION 126

This question requires that you evaluate the underlined text to determine if it is correct. "Hardware-based RAID" uses system processing resources.

Select the correct answer if the underlined text does not make the statement correct. Select "No change is needed" if the underlined text makes the statement correct.

- A. Windows-based RAID
- B. RAID 10
- C. RAID 6
- D. No change is needed.

Answer: A

NEW QUESTION 128

You need to centralize administration of print servers and network printers. What should you use?

- A. Print Management
- B. Printers and Faxes
- C. Device Manager
- D. Print queue

Answer: A

Explanation:

There are two primary tools that you can use to administer a Windows print server in Windows Server 2008: Server Manager and Print Management.

NEW QUESTION 129

You create a new domain. Which two Active Directory objects will be available by default? (Choose two)

- A. Computer
- B. Employee
- C. User
- D. Device
- E. Server

Answer: AC

Explanation:

An Active Directory structure is an arrangement of information about objects. The objects fall into two broad categories: resources (e.g., printers) and security principals (user or computer accounts and groups). Security principals are assigned unique security identifiers (SIDs).

Note:

* Install-ADDSDomain

Installs a new Active Directory domain configuration.

NEW QUESTION 131

Which task is executed during the Power-On Self Test (POST)?

- A. The amount of system RAM is detected.
- B. The Master Boot Record is created.
- C. The operating system is initialized.
- D. Disk file systems are detected.

Answer: A

Explanation:

The principal duties of the main BIOS during POST are as follows:

verify CPU registers

verify the integrity of the BIOS code itself

verify some basic components like DMA, timer, interrupt controller

(A) find, size, and verify system main memory initialize BIOS

pass control to other specialized BIOSes (if and when required) identify, organize, and select which devices are available for booting

NEW QUESTION 136

A record of specific aspects of system performance over time is referred to as a/an:

- A. Threshold
- B. Log
- C. Event
- D. Alert

Answer: B

Explanation:

Working with Performance Logs

Applies To: Windows 7, Windows Server 2008 R2, Windows Server 2012, Windows Vista You can view log files or log data provided by a database in Performance Monitor to see a visual representation of performance data collected by Data Collector Sets.

NEW QUESTION 139

You need to install storage device drivers for a Windows boot partition. When should you do this?

- A. After you have started Windows for the first time
- B. Before creation of the RAID array
- C. During the post-boot phase
- D. During the installation phase

Answer: D

Explanation:

Example:

During the first phase of the Windows XP installation, Setup displays the following message at the bottom of the screen:

Press F6 if you have to install a third-party SCSI or RAID driver.

Press F6 and then follow the instructions to install a mass-storage device driver from your Original Equipment Manufacturer (OEM).

NEW QUESTION 144

Your network includes Windows Server 2003 and Windows Server 2008 domain controllers. You need to ensure that group policy change are applied immediately. Which tool should you use on the client computer?

- A. Groupware
- B. Windows update
- C. GPUpdate
- D. Policy Editor

Answer: C

Explanation:

GPUpdate

Refreshes local and Active Directory-based Group Policy settings, including security settings.

NEW QUESTION 147

Enabling additional users to handle administrative tasks for a particular object is referred to as:

- A. Redirection
- B. Assignment
- C. Targeting
- D. Delegation

Answer: D

Explanation:

In computing Delegation of Control is assigning a person or group specific administrative permissions for an Organizational Unit.

NEW QUESTION 150

One advantage of application virtualization is:

- A. Fewer operating system updates.
- B. Improved collaboration.
- C. Reduced network traffic.
- D. Reduced client administrative overhead.

Answer: D

Explanation:

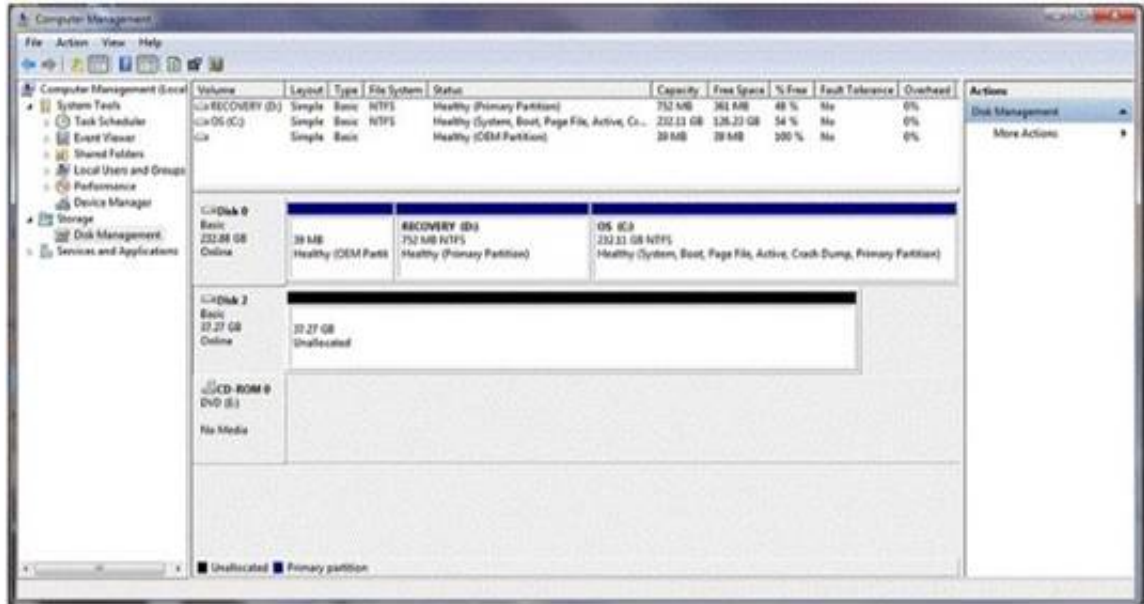
Virtualization is not just for the Fortune 500 anymore. SMBs are rapidly adopting virtualization and achieving significant benefits in a number of areas. Specifically, SMBs are seeing improvements in:

- * (D) Time spent on routine IT administrative tasks
- Backup and data protection
- Application availability
- Ability to respond to changing business needs
- Business continuity preparedness
- Company profitability and growth rate

NEW QUESTION 151

HOTSPOT

You buy a new USB hard drive for your server. After connecting the drive, you need to make this drive available to Windows. In Computer Management Disk Management you see the drive, but it is not visible in Explorer's Computer view, as shown in the following image:



Use the drop-down menus to select the answer choice that completes each statement. Each correct selection is worth one point.

Answer Area

You should create a [answer choice] volume on Disk 2.

simple
spanned
striped

You should format Disk 2 as [answer choice] to support compression.

exFAT
FAT32
NTFS

- A. Mastered
- B. Not Mastered

Answer: A

Explanation:

Answer Area

You should create a [answer choice] volume on Disk 2.

simple
spanned
striped

You should format Disk 2 as [answer choice] to support compression.

exFAT
FAT32
NTFS

NEW QUESTION 153

Which Hyper-V network type shares the host's physical network adapter?

- A. External
- B. Public
- C. Private
- D. Internal

Answer: A

Explanation:

For Hyper-V host networking, the most common option is to create an external access virtual switch. This allows VMs on the host to access other systems on a traditional VLAN or standard switched network.

NEW QUESTION 158

You manage a company's Active Directory. You need to delegate the control of a branch office to a set of administrators. Where would you place the users and computers that belong to the branch office?

- A. In a distribution group
- B. In an Organizational Unit
- C. In the root of the domain
- D. In the Built-in container

Answer: B

NEW QUESTION 162

What should you use to prevent power spikes from harming a server?

- A. Power supply unit
- B. Hot-swappable power supply
- C. Dedicated surge protector
- D. Line conditioner

Answer: C

Explanation:

Dedicated surge protectors protect specific items, such as servers, from surges.

A surge occurs when too much electricity (technically too much voltage) flows through to the item.

Reference: <http://romitti.com/2015/02/dedicated-surge-protectors/>

NEW QUESTION 164

DRAG DROP

In which order are group policies applied?

(To answer, move the appropriate scopes from the list of scopes to the answer area and arrange them from first applied to last applied)

Scopes	Answer Area
Domain	
Local	
Organizational Unit	
Site	

- A. Mastered
- B. Not Mastered

Answer: A

Explanation:

Scopes	Answer Area
Domain	Local
Local	Site
Organizational Unit	Domain
Site	Organizational Unit

NEW QUESTION 166

You configure Volume Shadow Copy Service (VSS) to save previous versions of a shared folder. By default, the copies of shared folders are stored in:

- A. A Network Attached Storage (NAS) device.
- B. A Distributed File System (DFS) share.
- C. A failover cluster.
- D. A local volume.

Answer: D

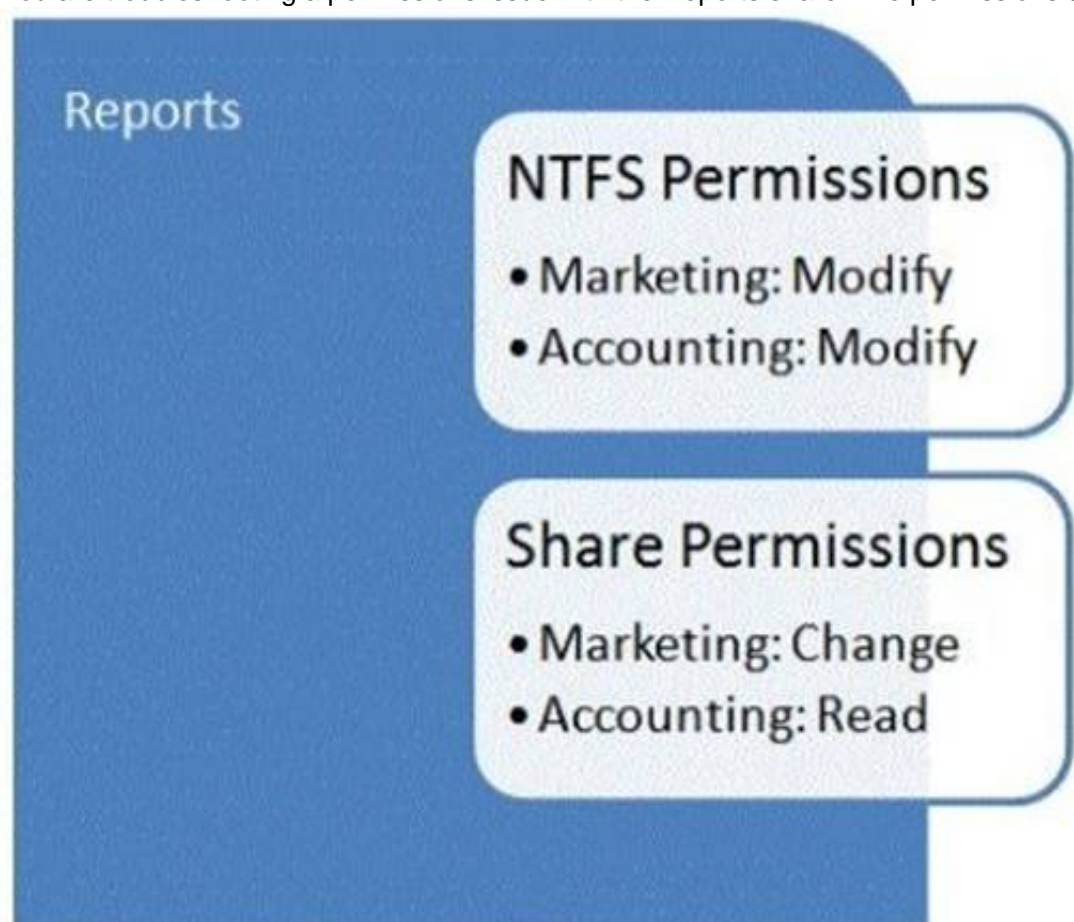
Explanation:

Shadow Copy technology requires the file system to be NTFS to be able to create and store shadow copies. Shadow Copies can be created on local and external (removable or network) volumes by any Windows component that uses this technology, such as when creating a scheduled Windows Backup or automatic System Restore point.

NEW QUESTION 168

HOTSPOT

You are troubleshooting a permissions issue with the Reports share. The permissions are shown in the following image:



The groups connect to the share.

Use the drop-down menus to select the answer choice that answers each question. Each correct selection is worth one point.

Answer Area

Accounting

Read
Modify
Full Control

Marketing

Read
Modify
Full Control

- A. Mastered
- B. Not Mastered

Answer: A

Explanation:

Answer Area

Accounting

Read
Modify
Full Control

Marketing

Read
Modify
Full Control

NEW QUESTION 171

HOTSPOT

For each of the following statements, select Yes if the statement is true. Otherwise, select No. Each correct selection is worth one point.

Answer Area

	Yes	No
A Windows Server 2008 R2 server that has an operations master role must also be a domain controller.	<input type="radio"/>	<input type="radio"/>
A single Windows Server 2008 R2 server may only be assigned a maximum of one operations master role.	<input type="radio"/>	<input type="radio"/>
Some operations master roles are assigned per domain, while others only need to be assigned to the forest.	<input type="radio"/>	<input type="radio"/>

- A. Mastered
- B. Not Mastered

Answer: A

Explanation:

Answer Area

	Yes	No
A Windows Server 2008 R2 server that has an operations master role must also be a domain controller.	<input checked="" type="radio"/>	<input type="radio"/>
A single Windows Server 2008 R2 server may only be assigned a maximum of one operations master role.	<input type="radio"/>	<input checked="" type="radio"/>
Some operations master roles are assigned per domain, while others only need to be assigned to the forest.	<input checked="" type="radio"/>	<input type="radio"/>

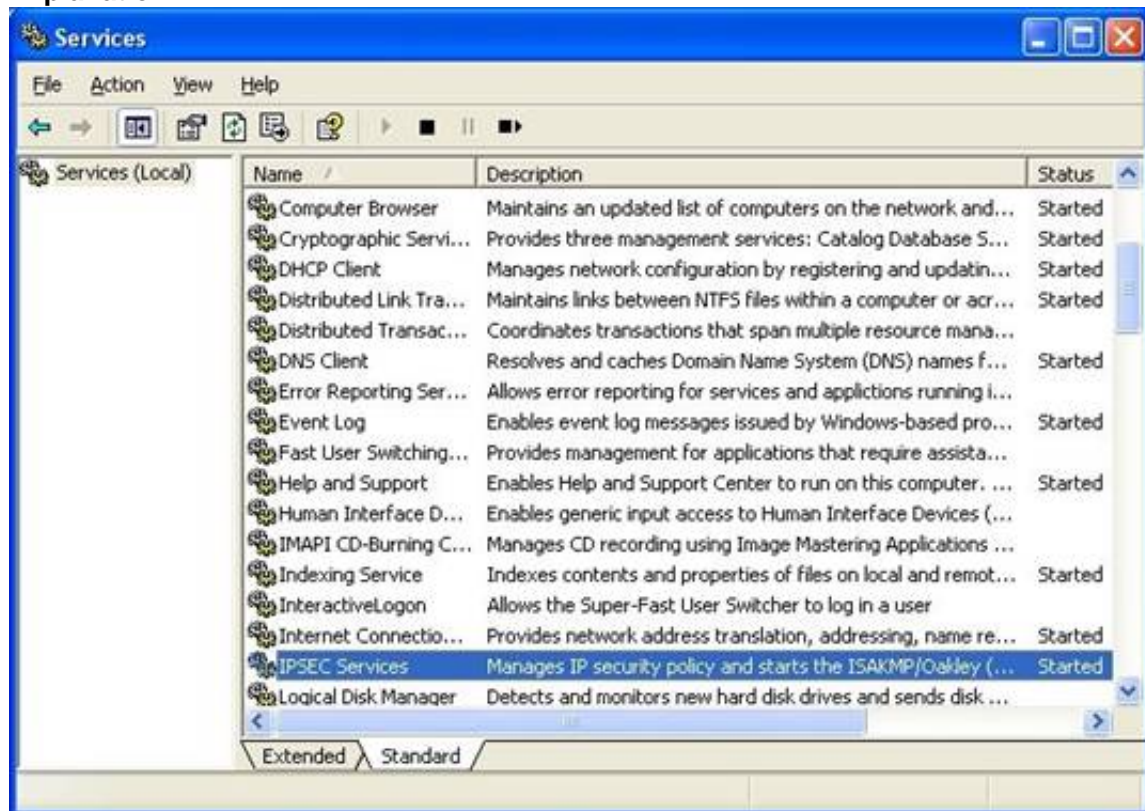
NEW QUESTION 174

You are using the Services Management Console. Which term is used to describe a service that is running?

- A. Started
- B. Activated
- C. Engaged
- D. Working

Answer: A

Explanation:



<http://www.ucs.cam.ac.uk/docs/leaflets/g53/vpn1.jpg>

NEW QUESTION 177

Which two specifications are included in Microsoft's hardware requirements for Windows Server? (Choose two)

- A. USB ports
- B. RAM
- C. Processor speed
- D. Disk I/O

Answer: BC

Explanation:

Example:

System Requirements for Windows Server 2012 Essentials

* CPU socket

1.4 GHz (64-bit processor) or faster for single core

1.3 GHz (64-bit processor) or faster for multi-core

* Memory (RAM) 2 GB

* Hard disk

* 160 GB hard disk with a 60 GB system partition

NEW QUESTION 180

.....

Relate Links

100% Pass Your 98-365 Exam with Exam Bible Prep Materials

<https://www.exambible.com/98-365-exam/>

Contact us

We are proud of our high-quality customer service, which serves you around the clock 24/7.

Viste - <https://www.exambible.com/>