

## N10-007 Dumps

### CompTIA Network+ N10-007

<https://www.certleader.com/N10-007-dumps.html>



**NEW QUESTION 1**

- (Exam Topic 1)

A network administrator has been given a network of 172.16.85.0/21 and wants to know the usable range of IP addresses on that subnet. Which of the following indicates the correct IP address range?

- A. 172.16.80.0-172.16.85.254
- B. 172.16.80.0-172.16.88.255
- C. 172.16.80.1-172.16.87.254
- D. 172.16.80.1-172.16.85.255

**Answer:** C

**NEW QUESTION 2**

- (Exam Topic 1)

Which of the following backup techniques is used to capture all the data that has changed since the least full backup?

- A. Incremental
- B. Replica
- C. Different
- D. Snapshot

**Answer:** C

**NEW QUESTION 3**

- (Exam Topic 1)

A company has just refreshed the hardware in its datacenter with new 10G Ethernet switches wishes to set up a new storage area network but must use existing infrastructure. Which of the following storage standards should the technician use?

- A. iSCSI
- B. Fibre Channel
- C. NAS
- D. InfinBand

**Answer:** C

**NEW QUESTION 4**

- (Exam Topic 1)

A network technician configures a firewall's ACL to allow outgoing traffic for several popular services such as email and web browsing. However, after the firewall's deployment, users are still unable to retrieve their emails. Which of the following would BEST resolve this issue?

- A. Allow the firewall to accept inbound traffic to ports 25, 67, 179, and 3389
- B. Allow the firewall to accept inbound traffic to ports 80, 110, 143, and 443
- C. Set the firewall to operate in transparent mode
- D. Allow the firewall to accept inbound traffic to ports 21, 53, 69, and 123

**Answer:** B

**NEW QUESTION 5**

- (Exam Topic 1)

A technician needs to set up a workstation with a private static address. Which of the following IP address would meet this requirement? (Select TWO).

- A. 65.78.90.102
- B. 127.0.0.1
- C. 169.254.90.19
- D. 172.16..1.103
- E. 172.33.47.100
- F. 192.168.1.55

**Answer:** DE

**NEW QUESTION 6**

- (Exam Topic 1)

A home user has purchased a new smart TV to stream online video services. The smart TV is unable to connect to the wireless network after several attempts. After from vacation, the home user tries again and can connect the TV to wireless network. However, the user notice a laptop is no longer able to connect to the network. Which of the following is the MOST likely cause?

- A. The DHCP scope has been exhausted.
- B. The security passcode has been changed
- C. The SSID is hidden.
- D. The AP configuration was reset.

**Answer:** A

**NEW QUESTION 7**

- (Exam Topic 1)

A technician is configuring a default route with IPv6. Which of the following is the correct setting for an IPV6 default rout?

- A. :: 1
- B. :: /0
- C. 2001: :0/64
- D. FE80 : :0/64

**Answer:** C

#### NEW QUESTION 8

- (Exam Topic 1)

A Chief Information Officer (CIO) is concentrated about an attacker gaining administrative access to the company's network devices. Which of the following is the MOST secure way to prevent this?

- A. ACL allowing only HTTP
- B. ACL allowing only Telnet
- C. Out-of-band modem
- D. Out-of-band console router

**Answer:** D

#### NEW QUESTION 9

- (Exam Topic 1)

A penetration tester has been tasked with reconnaissance to determine which ports are open on the network. Which of the following tasks should be done FIRST? (Choose two.)

- A. Network scan
- B. Banner grab
- C. Tracert
- D. DHCP server check
- E. Brute-force attack

**Answer:** AC

#### NEW QUESTION 10

- (Exam Topic 1)

A network administrator is redesigning network security after an attack. During the attack, an attacker used open cubicle location to attach devices to the network. The administrator wants to be able to monitor future attack in a safe environment and determine the method of attack. Which of the following should the administrator do to Best meet this requirement?

- A. Create a VLAN for the unused ports and create a honeypot on the VLAN.
- B. Install a BPDU guard on switchports and enable STP
- C. Create a DMZ for public server and secure a segment for the internal network
- D. Install antivirus software and set an ACL on the servers.

**Answer:** A

#### NEW QUESTION 10

- (Exam Topic 1)

Which of the following protocols are classified as connectionless? (Select TWO)

- A. TFTP
- B. FTP
- C. HTTP
- D. SNMP
- E. SSH
- F. IMAP

**Answer:** AD

#### Explanation:

Trivial FTP (TFTP) is a connectionless file transfer program.

#### NEW QUESTION 13

- (Exam Topic 1)

A technician is sent to a remote office to set up a device to connect to the internet. The company Standard document requires stateful inspection. Which of the following should the technician install?

- A. ROUTER
- B. Multilayer switch
- C. Firewall
- D. Bridge

**Answer:** C

**NEW QUESTION 18**

- (Exam Topic 1)

A network technician needs to set up an access method for Ann, a manager, to work from home. Ann needs to locally mapped corporate resources to perform her job. Which of the following would provide secure access to the corporate resources?

- A. Utilize an SSH connection to the corporate server.
- B. Use TFTP to transfer files to corporate resources.
- C. Allow RDP through an external firewall.
- D. Connect utilizing client-to-site VPN.

**Answer: D**

**NEW QUESTION 21**

- (Exam Topic 1)

In a service provider network, a company has an existing IP address scheme. Company A's network currently uses the following scheme:

```
Subnet 1: 192.168.1.0/26
Subnet 2: 192.168.1.65/26
```

Company b uses the following scheme: Subnet 1: 192.168.1.50/28

The network administrator cannot force the customer to update its IP scheme. Considering this, which of the following is the BEST way for the company to connect these networks?

- A. DMZ
- B. PAT
- C. NAT
- D. VLAN

**Answer: C**

**NEW QUESTION 23**

- (Exam Topic 1)

A critical vulnerable is discovered on a network device. The vendor state it has already patched this vulnerable in its current release. Which of the following actions should an administrator take?

- A. Change the default password.
- B. Use a firewall in front of the device.
- C. Update the firmware.
- D. Upgrade the configuration.

**Answer: B**

**NEW QUESTION 24**

- (Exam Topic 1)

A network technician recently installed a new server on a network. The technician must ensure the server does not have any unnecessary services running. The IP address of the server is 204.211.38.50

Which of the following commands would allow the technician to make this determination?

- A. nmap
- B. pathping
- C. route
- D. nslookup

**Answer: A**

**NEW QUESTION 29**

- (Exam Topic 1)

A critical vulnerability is discovered on a network device. The vendor states it has already patched this vulnerability in its current release. Which of the following actions should an administrator take?

- A. Change the default password
- B. Use a firewall in front of the device.
- C. Update the firmware.
- D. Upgrade the configuration.

**Answer: C**

**NEW QUESTION 33**

- (Exam Topic 1)

A technician is setting up a public guest network for visitors to access the Internet that must be separate from the corporate network. Which of the following are the BEST steps for the technician to take with minimum overhead configuration? (Choose two.)

- A. Enable SSID broadcasting to identify the guest network
- B. Configure visitor devices to use static IP addresses
- C. Enable two-factor authentication on visitor devices
- D. Configure the access point to use WPA2-AES encryption
- E. Ensure the access point is not running in mixed mode

**Answer: AB**

**NEW QUESTION 34**

- (Exam Topic 1)

A network technician is setting up a new router. Since it is exposed to the public, which of the following are the BEST steps the technician should take when setting up this device? (Choose two.)

- A. Disable unnecessary services.
- B. Use private IP addresses.
- C. Allow remote management access.
- D. Disable the console port.
- E. Enable encryption.
- F. Upgrade to the latest firmware.

**Answer:** AF

**NEW QUESTION 35**

- (Exam Topic 1)

A technician is assigned to secure a basic wireless network. Which of the following authentication protocol should the technician use to performed this task (select TWO).

- A. RDP
- B. SNMP
- C. WPA2
- D. EAP SSL

**Answer:** CD

**NEW QUESTION 39**

- (Exam Topic 1)

A technician is troubleshooting network connectivity issue with a remote host. Which of the following tools would BEST between the client and the remote host?

- A. tracer
- B. ping
- C. tcpdump
- D. pathping
- E. netstate
- F. nslookup
- G. route

**Answer:** EF

**NEW QUESTION 41**

- (Exam Topic 1)

A network administrator receives a call from the sales department requesting ports 20 and 21 be opened on the company's firewall to allow customers to retrieve a large file. Which of the following should the administrator perform BEFORE making the needed changes? (Choose two.)

- A. Document the reason for the request
- B. Scan the file for malware to protect the sales department's computers
- C. Follow the company's approval process for the implementation
- D. Install a TFTP server for the customers to use for the transfer
- E. Create a honeypot to store the file on for the customers to use
- F. Write the SLA for the sales department authorizing the change

**Answer:** AC

**NEW QUESTION 43**

- (Exam Topic 1)

A technician discovers that multiple switches require a major update. Which of the following policies should be followed?

- A. Change management policy
- B. Remote access policy
- C. Acceptable use policy
- D. Memorandum of understanding

**Answer:** A

**NEW QUESTION 44**

- (Exam Topic 1)

A router is set up to utilize RIPv2 to route traffic throughout the network. Which of the following routing metrics is used to determine the path?

- A. Distance
- B. bandwidth
- C. Speed
- D. hop count

**Answer:** D

**NEW QUESTION 48**

- (Exam Topic 1)

Which of the following are characteristics of jumbo frames? (Choose two.)

- A. Commonly used on SAN
- B. MTU size greater than 1500
- C. MTU size greater than 10000
- D. Commonly used on IaaS
- E. MTU size greater than 12000

**Answer:** AB

**NEW QUESTION 49**

- (Exam Topic 1)

A network engineer planning for wireless connectivity in large office building. Currently, the office building contains both legacy and newer devices.

Which of the following wireless network routers should engineer select for the fastest throughput for all wireless devices in the office building?

- A. 802.11ac
- B. 802.11b
- C. 802.11g
- D. 802.11n

**Answer:** A

**Explanation:**

<https://www.forbes.com/forbes/welcome/?toURL=https://www.forbes.com/sites/gordonkelly/2014/12/30/802-11>

**NEW QUESTION 51**

- (Exam Topic 1)

A disgruntled employee executes a man-in-the-middle attack on the company network. Layer 2 traffic destined for the gateway is redirected to the employee's computer. This type of attack is an example of:

- A. ARP cache poisoning
- B. IP spoofing
- C. amplified DNS attack
- D. evil twin

**Answer:** A

**NEW QUESTION 56**

- (Exam Topic 1)

802.11 n clients currently have no way to connect to the network. Which of the following devices should be implemented to let the clients connect?

- A. Router
- B. Range extender
- C. VoIP endpoint
- D. Access point

**Answer:** D

**NEW QUESTION 60**

- (Exam Topic 1)

A network technician downloaded new firmware for the company firewall. Which of the following should the network technician verify to ensure the downloaded file is correct and complete?

- A. File hash
- B. File date
- C. File type
- D. File size

**Answer:** A

**NEW QUESTION 64**

- (Exam Topic 1)

Which of the following provides the ability to deploy consistent access point configurations from a central location?

- A. Wireless controller
- B. AAA server
- C. WiFi-protected setup
- D. Proxy server
- E. VPN concentrator

**Answer:** A

**NEW QUESTION 69**

- (Exam Topic 1)

Which of the following is the correct port number for NTP?

- A. 25
- B. 69
- C. 123
- D. 161

**Answer:** C

#### NEW QUESTION 71

- (Exam Topic 1)

A network administrator wishes to ensure there are no unnecessary open communication paths into a server. Using a port scanner, the administrator finds that ports are reported as closed. Which of the following BEST explains this response?

- A. The ports belong to an active system and are denying requests
- B. The ports are associated with deprecated services
- C. The ports do not belong to a live system
- D. The ports replied with a SYN/ACK response

**Answer:** B

#### NEW QUESTION 74

- (Exam Topic 1)

A company recently upgraded all of its printers to networked multifunction devices. Users can print to the new devices, but they would also like the ability to scan and fax files from their computers. Which of the following should the technician update to allow this functionality?

- A. Device software
- B. Printer drivers
- C. Printer firmware
- D. NIC drivers

**Answer:** C

#### NEW QUESTION 76

- (Exam Topic 1)

A network technician is installing a new wireless network in a small office. Due to environment concerns, The customer wants the network to run exclusively on the %GHz frequency. Which of the following wireless technologies should the technician install meet this requirement? (Select TWO).

- A. 802.11ac
- B. 802.11b
- C. 802.11g
- D. 802.11n
- E. Bluetooth
- F. z-Wave

**Answer:** AD

#### NEW QUESTION 81

- (Exam Topic 1)

A network technician is implementing a solution on the network to hide the workstation internal IP addresses across a WAN. Which of the following is the technician configuring?

- A. QoS
- B. DMZ
- C. RIP
- D. NAT

**Answer:** D

#### NEW QUESTION 86

- (Exam Topic 1)

A network technician is configuring a firewall access list to secure incoming connections to an email server. The internal address of this email server is 192.168.1.143. The firewall should allow external email servers to send email to the email server. The email server also supports client access via a web browser. Only secure protocols should be used, and only the necessary ports should be open. Which of the following ACL rules should be configured in the firewall's WAN port? (Choose two.)

- A. Permit 192.168.1.143.25
- B. Permit 192.168.1.143.80
- C. Permit 192.168.1.143.110
- D. Permit 192.168.1.143.143
- E. Permit 192.168.1.143.443
- F. Permit 192.168.1.143.587

**Answer:** EF

#### NEW QUESTION 88

- (Exam Topic 1)

Which of the following datacenter security methodologies is MOST likely to remain usable during a network outage?

- A. biometric scanners
- B. door locks
- C. video surveillance
- D. motion detectors

**Answer:** B

#### NEW QUESTION 93

- (Exam Topic 1)

A network technician is creating a new subnet for 488 host machines. The technician is told to use a class B address scheme when making the subnet and is instructed to leave as much room as possible for additional subnets of the same size. Which of the following subnets would fulfill these requirements?

- A. 10.5.4.0/22
- B. 10.233.2.0/23
- C. 172.16.0.0/22
- D. 172.18.0.0/23
- E. 192.168.25.0/24

**Answer:** D

#### NEW QUESTION 96

- (Exam Topic 1)

A network technician is connecting two switches together. Which of the following protocols should the technician use to increase speed and fault tolerance?

- A. SIP
- B. BGP
- C. LACP
- D. LLDP

**Answer:** C

#### NEW QUESTION 100

- (Exam Topic 1)

A network technician receives a call from a user who is experiencing network connectivity issues. The network technician questions the user and learns the user brought in a personal wired router to use multiple computers and connect to the network. Which of the following has the user MOST likely introduced to the network?

- A. Rogue DHCP server
- B. Evil twin
- C. VLAN mismatch
- D. Honeytrap

**Answer:** A

#### NEW QUESTION 102

- (Exam Topic 1)

At which of the following OSI model layers would a router operate?

- A. Physical
- B. Network
- C. Transport
- D. Data link

**Answer:** B

#### NEW QUESTION 104

- (Exam Topic 1)

A network technician is installing a new network switch and is looking for an appropriate fiber optic patch cable. The fiber optic patch panel uses a twist-style connector. The switch uses a SFP module. Which of the following connector types should the fiber patch cable have?

- A. LC
- B. ST
- C. SC
- D. MTRJ
- E. MTP

**Answer:** B

#### NEW QUESTION 106

- (Exam Topic 1)

A technician is observing a brownout issue at a smaller office. At least once a week, the edge switch power cycles. Which of the following should the technician do to resolve the issue?

- A. Install a new switch.
- B. Install a UPS.

- C. Replace the switch uplink cable.
- D. Install a new electrical circuit.

**Answer:** B

#### NEW QUESTION 107

- (Exam Topic 1)

A technician is configuring a printer for a client. The which of the following types to the network, But is unsure how to determine its switch port. Which of the following should the technician do FIRST to locate switch port?

- A. perform a DNS lookup on the server.
- B. Set up a SSH session to the desktop
- C. Reference the ARP table in the router
- D. Configure port security on the switch.

**Answer:** D

#### NEW QUESTION 108

- (Exam Topic 1)

A network technician has discovered a rogue access point under an empty cubicle desk. Which of the following should the technician perform to ensure another cannot be placed on the network?

- A. Disable unused ports on switches
- B. Enable DHCP guard to detect rogue servers
- C. Configure WPA2 on all access points
- D. Use TACACS+ authentication

**Answer:** B

#### NEW QUESTION 113

- (Exam Topic 1)

AContent filter is set to analyze XML and JSON that users access from the internet. At which of the following layer's is this analysis taking place?

- A. 1
- B. 3
- C. 5
- D. 7
- E. 6

**Answer:** E

#### NEW QUESTION 118

- (Exam Topic 1)

An ISP technician gets a call from a business that just changed equipment but can no longer connect to the Internet. The technician checks the ARP table on the ISP switch, and there is no corresponding MAC address present. Instead, the entry is "Incomplete". Which of the following could cause this condition?

- A. VLAN mismatch
- B. Duplex/Speed mismatch
- C. Duplicate IP address
- D. TX/RX reverse

**Answer:** B

#### NEW QUESTION 123

- (Exam Topic 1)

A network technician has salvaged several Ethernet cables from a datacenter. The technician attempts to use the cables to connect desktops to the network without success. Which of the following is MOST likely the issue?

- A. The cables have an incorrect pin-out.
- B. The cables are UTP instead of STP.
- C. The cables are Cat 6 instead of Cat 5.
- D. The cables are not plenum rated.

**Answer:** A

#### NEW QUESTION 125

- (Exam Topic 1)

A system administrator receives report from users of odd behavior in regard to recently installed server. While reviewing the server network configuration, the systems administrator does both a forward and a reverse DNS lookup on the host, along with the network adapter configuration.

```
$ host server.company.com
server.company.com has address 129.168.0.100
server.company.com is handled by 100 mail.company.com
$ host 192.168.0.100
100.0.168.192.in-addr.arpa domain name pointer web.company.com
$ host web.company.com
server.company.com has address 129.168.0.50
server.company.com is handled by 100 mail.company.com
$ ifconfig -a
eth0Link encap:Ethernet HWaddr 00:30:48:9D:06:73
Inet addr:192.168.0.100 Bcast:192.168.0.255 Mask:255.255.255.0
UP BROADCAST RUNNING MULTICAST MTU:1500 Metric:1
lo0Link encap:Local Loopback
inet addr:127.0.0.1 Mask:255.0.0.0
UP LOOPBACK RUNNING MTU:16436 Metric:1
```

Which of the following is the problem identified in the output above?

- A. There is no reverse DNS entry for this host.
- B. The server IP address is incorrectly configured.
- C. The DNS lookup entry is incorrectly configured.
- D. The reverse DNS entry is pointing to a different host.

**Answer: C**

#### NEW QUESTION 127

- (Exam Topic 1)

A network technician is working on a proposal for email migration from an on-premises email system to a vendor-hosted email in the cloud. The technician needs to explain to management what type of cloud model will be utilized with the cloud-hosted email. Which of the following cloud models should the technician identify in the proposal?

- A. IaaS
- B. PaaS
- C. SaaS
- D. MaaS

**Answer: C**

#### NEW QUESTION 129

- (Exam Topic 1)

Which of the following BEST describes the BGP routing protocol?

- A. distance vector
- B. hybrid
- C. static
- D. link state

**Answer: B**

#### NEW QUESTION 133

- (Exam Topic 1)

A technician is utilizing SNMPv3 to monitor network statistics. Which of the following actions would occur immediately if a server's utilization spikes above the prescribed value?

- A. A trap message is sent via UDP to the monitoring workstation.
- B. The SET function pushes an alert to the MIB database.
- C. The object identifier is modified and reported during the next monitoring cycle.
- D. A response message is sent from the agent to the manager.

**Answer: A**

#### NEW QUESTION 136

- (Exam Topic 1)

A technician is setting up a direct connection between two older PCs so they can communicate but not be on the corporate network. The technician does not have access to a spare switch but does have spare Cat 6 cables, RJ-45 plugs, and a crimping tool. The technician cuts off one end of the cable. Which of the following should the technician do to make a crossover cable before crimping the new plug?

- A. Reverse the wires leading to pins 1 and 2
- B. Reverse the wires leading to pins 1 and 3
- C. Reverse the wires leading to pins 2 and 3
- D. Reverse the wires leading to pins 2 and 4

**Answer: D**

#### NEW QUESTION 138

- (Exam Topic 1)

An assistant systems analyst reports the following findings of an investigation of slow Internet connections in a remote office to the senior systems analyst:

Device	CPU Utilization	Memory Utilization	Link Status
Router	5%	43%	Good
Firewall	92%	58%	Good
Switch 1	23%	32%	Good
Switch 2	8%	81%	Good

Which of the following devices is causing the issue?

- A. Router
- B. Firewall
- C. Switch 1
- D. Switch 2

**Answer:** B

#### NEW QUESTION 140

- (Exam Topic 1)

A network administrator wants to ensure sensitive data is not exfiltrated from the system electronically. Which of the following should be implemented?

- A. DLP
- B. AUP
- C. NDA
- D. SLA

**Answer:** A

#### NEW QUESTION 143

- (Exam Topic 1)

In which of the following scenarios should a technician use a cross-over cable to provide connectivity?

- A. PC to switch
- B. Switch to AP
- C. Router to switch
- D. Router to modem
- E. PC to PC

**Answer:** E

#### NEW QUESTION 145

- (Exam Topic 1)

A server in a LAN was configured to act as a gateway between all company computers and an external network. Which of the following network devices offers the ability to increase both performance and security?

- A. Load balancer
- B. IDS
- C. Proxy server
- D. Wireless controller

**Answer:** C

#### NEW QUESTION 147

- (Exam Topic 1)

A technician is setting up a wireless access point in a coffee shop. The shop is not concerned with security but only wants to allow customers to have access. Which of the following configurations should the technician deploy?

- A. Use a pre-shared key.
- B. Set up EAP.
- C. Configure RADIUS.
- D. Configure MAC filtering.

**Answer:** A

#### NEW QUESTION 148

- (Exam Topic 1)

Which of the following protocols authenticates a PC to the server using a ticket issued to it by the authentication service?

- A. Kerberos
- B. RADIUS
- C. TACACS+
- D. LDAP

**Answer:** A

#### NEW QUESTION 153

- (Exam Topic 1)

A network administrator gets a call regarding intermittent network outages across the country. Which of the following should be used to connect to the network so the administrator can troubleshoot this issue from home? (Choose two.)

- A. FTP
- B. SMTP
- C. VPN
- D. SSH
- E. SNMP

**Answer:** CD

#### NEW QUESTION 154

- (Exam Topic 1)

A network technician is adding workstation to the enterprise network. After bringing the PCs online. The technician receives reports from random users that they cannot log on. The technician checks and finds everything is functioning for most users. Which of the following is MOST likely causing the problem?

- A. Exhausted DHCP scope
- B. DNS resolving
- C. Duplicate Mac address
- D. Incorrect ACL entry

**Answer:** C

#### NEW QUESTION 159

- (Exam Topic 1)

A technician is working on a new machine that has been procured for testing and development. The machine will run a hypervisor and host several operating systems of various types so the development team can test the company's applications in a variety of environments. The technician wants the virtual machines to be available to communicate with each other without leaving the hypervisor. Which of the following is the BEST solution to the problem?

- A. The technician should connect the machine to its own separate switch.
- B. The technician should add a route in each virtual machine to the default gateway.
- C. The technician should configure a virtual switch.
- D. The technician should set up individual routes between the machines.

**Answer:** C

#### NEW QUESTION 161

- (Exam Topic 1)

A network technician notices the site-to-site VPN and Internet connection have not come back up at a branch office after a recent power outage. Which of the following is an out-of-band method the technician would MOST likely utilize to check the branch office's router status?

- A. Use a modem to console into the router
- B. Walk a user through troubleshooting the connection
- C. Travel to the branch office
- D. Hire a contractor to go on-site

**Answer:** A

#### NEW QUESTION 164

- (Exam Topic 1)

A technician is responsible for configuring a new firewall. The hardware team has already installed, powered, and connected the system. Which of the following types of documentation should the technician utilize to complete the task?

- A. Rack diagram
- B. IDF/MDF documentation
- C. Network performance baseline
- D. Logical and physical diagrams

**Answer:** D

#### NEW QUESTION 165

- (Exam Topic 1)

A junior technician is setting up a voice control device so the Chief Executive Officer (CEO) will be to control various things in the office. Of which of the following types of IoT technologies is this an example?

- A. LAN
- B. WAN
- C. SAN
- D. PAN

**Answer:** D

#### NEW QUESTION 170

- (Exam Topic 1)

Which of the following MUST be implemented to share metrics between routing protocols within the same router?

- A. Routing loop

- B. Routing table
- C. Route redistribution
- D. Dynamic routes

**Answer:** B

#### NEW QUESTION 172

- (Exam Topic 1)

A network technician is diagnosing a time-out issue generated from an end user's web browser. The web browser issues standard HTTP get and post commands to interact with the website. Given this information, the technician would like to analyze the entire TCP handshake of the HTTP requests offline. Which of the following tools would allow the technician to view the handshake?

- A. Packet analyzer
- B. Port analyzer
- C. SNMP traps
- D. Spectrum analyzer

**Answer:** A

#### NEW QUESTION 176

- (Exam Topic 1)

Which of the following devices should a network administrator configure on the outermost part of the network?

- A. Media converter
- B. Switch
- C. Modem
- D. Firewall

**Answer:** D

#### NEW QUESTION 178

- (Exam Topic 1)

A network technician receives a call branch office about problem with its wireless connectivity. The user states the office is hosting a ....metting that includes some online training with local businesses. The guest users have all brought devices to connect to the guest network at ....Branch office. All users sre connected to a single WAP and are reporting that connections keep drooping and network speeds are unusable. Which of the following is the MOST likely cause of this issue?

- A. DHCP exhaustion
- B. Channel overlapping
- C. interference
- D. Overcapacity

**Answer:** D

#### NEW QUESTION 180

- (Exam Topic 1)

The Chief Information Officer (CIO) has noticed the corporate wireless signal is available in the parking lot. Management requests that the wireless network be changed so it is no longer accessible in public areas, without affecting the availability inside the building. Which of the following should be changed on the network?

- A. Power levels
- B. Overcapacity
- C. Distance limitations
- D. Channel overlap

**Answer:** A

#### NEW QUESTION 185

- (Exam Topic 1)

A junior network technician is working in the field and needs to connect to the company/s remote server, however, doing so will require the junior technician to use the public Internet. Because security is a concern which of the following is the BEST method to use?

- A. Telnet
- B. SSH
- C. SFTP
- D. VNC

**Answer:** B

#### NEW QUESTION 189

- (Exam Topic 1)

A contractor is setting up and configuring conference rooms for a convention. The contractor sets up each room in the conference center to allow wired Internet access going to individual tables. The contractor measured the distance between the hotel's patch panel to the jack, and the distance is within Cat 5e specifications. The contractor is concerned that the room will be out of specification if cables are run in each room from the wall jacks. Which of the following actions should the contractor take to ensure the cable runs meet specifications and the network functions properly?

- A. Place a switch at the hotel's patch panel for connecting each room's cables
- B. Place a switch on each table to ensure strong connectivity

- C. Place repeaters between the patch panel and the rooms
- D. place a switch at the wall jack and run the cables in the room from there

**Answer:** A

#### NEW QUESTION 191

- (Exam Topic 1)

Ann, a new employees within a department, cannot print to any of the printers in the department or access any of the resources that other can. However, she can access the internet. The network engineer has confirmed that Ann's has been set up same as the others. There are no access lists restricting Ann's access. Which of the following cloud be the issue for this lack of access?

- A. Duplex/speed mismatch
- B. VLAN mismatch
- C. DNS server issue
- D. DHCP server issue
- E. Spanning tree blocked ports

**Answer:** B

#### NEW QUESTION 193

- (Exam Topic 1)

Which of the following WAN technologies utilizes the concept of virtual circuits and point-multipoint connections?

- A. ISDN
- B. MPLS
- C. PRI
- D. Broadband cable
- E. Frame relay

**Answer:** E

#### NEW QUESTION 197

- (Exam Topic 1)

Which of the following provides two factor authentication?

- A. Username+ password
- B. Smartcard +PIN
- C. Fingerprint +retina scan
- D. Key fob +ID card

**Answer:** B

#### NEW QUESTION 198

- (Exam Topic 1)

Ann, a network technician, has just installed a fiber switch in a datacenter. To run the fiber cabling, Ann plans the cable route over the top of the rack using the cable trays, down to the switch, coiling up any excess cable. As Ann configures the switch, she notices several messages in the logging buffer stating the receive signal of the SFP is too weak. Which of the following is MOST likely the cause of the errors in the logging buffer?

- A. Bend radius exceeded
- B. Fiber cable mismatch
- C. Fiber type mismatch
- D. Bad fiber switch

**Answer:** A

#### NEW QUESTION 201

- (Exam Topic 1)

Which of the following is a reason why a business may be hesitant to move sensitive data to a SaaS cloud service?

- A. Decreased performance of internal network
- B. Loss of full control over data resources
- C. Increased malware exposure
- D. Incompatibility with the current network

**Answer:** B

#### NEW QUESTION 205

- (Exam Topic 1)

Based on networks 10.8.16.0/22 and 10.8.31.0/21, which of the following is the BEST summarized CIDR notation?

- A. 10.8.0.0/16
- B. 10.8.0.0/19
- C. 10.8.0.0/20
- D. 10.0.0.0/24

**Answer:** A

**NEW QUESTION 206**

- (Exam Topic 1)

A recently constructed building makes use of glass and natural light. Users in the building are reporting poor cellular connectivity and speeds. Which of the following is MOST likely the cause?

- A. Absorption
- B. Channel overlap
- C. Reflection
- D. Frequency mismatch

**Answer:** C

**NEW QUESTION 210**

- (Exam Topic 1)

Which of the following BEST describes the differences between VLAN hopping and session hijacking?

- A. VLAN hopping involves the unauthorized transition from one VLAN to another to gain additional acces
- B. Session hijacking involves overriding a user's web connection to execute commands
- C. VLAN hopping is a brute force attack executed to gain additional acces
- D. Session hijacking involves physically disrupting a network connection
- E. VLAN hopping involves overriding a user network connection to execute malicious command
- F. Session hijacking involves compromising a host to elevate privileges
- G. VLAN hopping is the act of exploiting poor VLAN taggin
- H. Session hijacking is a web-based attack aimed at privilege escalation

**Answer:** A

**NEW QUESTION 213**

- (Exam Topic 1)

A technician is downloading an ISO from a vendor's website. To ensure the integrity of the download, which of the following should be verified?

- A. File size
- B. Vendor URL
- C. File hashing
- D. Encryption

**Answer:** C

**NEW QUESTION 218**

- (Exam Topic 1)

A small town is attempting to attract tourists who visit larger nearby cities. A network engineer is asked to implement a network encompassing the five-block town center and nearby businesses. The inclusion of smartphones and portable devices is crucial to the plan. Which of the following is the network engineer being asked to implement?

- A. LAN
- B. PAN
- C. MAN
- D. WAN

**Answer:** C

**NEW QUESTION 219**

- (Exam Topic 1)

A network technician is able to connect the switches between to offices, but the offices cannot communicate with each other, as each office uses a different IP addressing scheme. Which of the following devices needs to be installed between the switches to allow communication?

- A. Bridge
- B. Access point
- C. Router
- D. Range extender

**Answer:** C

**NEW QUESTION 222**

- (Exam Topic 1)

An analyst is developing a proof of concept of a wireless-based attack as part of a penetration test against an organization's network. As part of the attack, the analyst launches a fake access point matching the SSID of the organization's guest access network. When a user connects to the fake access point, the analyst allows the traffic to flow through the access point to the legitimate site while the data traversing the network is logged for latest analysis and exploitation. Which of the following attacks has the analyst successfully performed in this scenario?

- A. Bluesnarfing
- B. Session hijacking
- C. MAC spoofing
- D. VLAN hopping
- E. Man-in-the-middle

**Answer:** E

**NEW QUESTION 226**

- (Exam Topic 1)

A network technician notices the site-to site VPN and internet connection have back up at a branch office' after a recent power outage. Which of the following is an out-of-band method the technician the would MOST likely utilize to check the branch office's router status?

- A. Use a modem to console into router.
- B. Walk to the branch troubleshooting the connection.
- C. Travel to the branch office.
- D. Hire a contractor to go on-site.

**Answer:** B

**NEW QUESTION 229**

- (Exam Topic 1)

A network technician needs to install a new access switch. After installing the new switch, the technician beings to move connections from the old switch to the new switch. The old switch used a GBIC connectors, and the new switch uses an SEF LC with LC connectors. After connecting the SC connector to the SC-to-LC adapter abd plugging it to the switch, the link does not come up as expected. Which of the following should a network technician perform NEXT?

- A. Replace SEP with a new one.
- B. Fall back to the switch.
- C. Transpose the fiber pairs.
- D. Replace multimode with single-mode cable

**Answer:** C

**NEW QUESTION 230**

- (Exam Topic 1)

Which of the following protocols is associated with a three-way handshake?

- A. UDP
- B. ICMP
- C. GRE
- D. TCP

**Answer:** D

**NEW QUESTION 231**

- (Exam Topic 1)

Which of the following is used to classify network data for the purpose of providing QoS?

- A. STP
- B. VLANs
- C. SIP
- D. DSCP

**Answer:** D

**NEW QUESTION 233**

- (Exam Topic 1)

A network administrator is assigned to run and connect a Cat 6e Ethernet cable between two nodes in a datacenter. Which of the following connector types should the network administrator use to terminate this cable?

- A. DB-9
- B. RS-232
- C. DB-25
- D. RJ-45

**Answer:** D

**NEW QUESTION 234**

- (Exam Topic 1)

A network technician is installing a new SOHO branch office that requires the use of a DOCSIS-compatible. The modem needs to be connected to the ISP's network at the demark. Which of the following cable type should be used?

- A. UTP
- B. Multimode
- C. Coaxial
- D. Serial

**Answer:** C

**NEW QUESTION 239**

- (Exam Topic 1)

Which of the following policies would Joe, a user, have to agree to when he brings in his personal tablet to connect to the company's guest wireless Internet?

- A. NDA
- B. IRP

- C. BYOD
- D. SLA

**Answer:** C

#### NEW QUESTION 242

- (Exam Topic 1)

A customer is reporting difficulty connecting some devices after replacing a wireless router with a new wireless 802.11ac router. The SSID, encryption and password are the same as the previous router. A technician goes on-site and notices the devices that are no longer connecting appear to be several years ago. Which of the following is MOST likely the problem?

- A. the password needs to be re-entered.
- B. there is a security type mismatch.
- C. there is insufficient antenna power.
- D. there is a frequency mismatch.
- E. the channel has changed.

**Answer:** D

#### NEW QUESTION 246

- (Exam Topic 1)

A switch has detected duplicate broadcast messages sourced from a second port. The broadcasts continue to be transmitted and duplicated until the amount of traffic causes severe performance issues. Which of the following should be configured to prevent this behavior?

- A. BPDU guard
- B. DHCP snooping
- C. ARP protection
- D. Spanning tree

**Answer:** D

#### NEW QUESTION 249

- (Exam Topic 1)

A building is equipped with light sensors that turn off the fluorescent lights when natural light is above a certain brightness. Users report experiencing network connection issues only during certain hours. The west side of the building experiences connectivity issues in the morning hours and the east side near the end of the day. At night the connectivity issues affect the entire building. Which of the following could be the cause of the connectivity issues?

- A. Light sensors are interfering with the network
- B. EMI from the lights is interfering with the network cables
- C. Network wiring is run perpendicular to electrical conduit
- D. Temperature changes are causing attenuation in copper cabling

**Answer:** C

#### NEW QUESTION 254

- (Exam Topic 1)

A network administrator needs to transmit traffic to geographically diverse sites to improve performance. Which of the following devices would BEST direct traffic to the remote sites?

- A. Hub
- B. Bridge
- C. Switch
- D. Router

**Answer:** D

#### NEW QUESTION 255

- (Exam Topic 1)

Multiple users are reporting that they are unable to access the network. The ENTIRE network is shown in the diagram. PCs are not statically assigned IP addresses. The following devices will display settings.

- WorkstationA
- WorkstationB
- WorkstationC
- WorkstationD
- WorkstationE
- WorkstationF
- WorkstationG
- Laptop1
- Laptop2
- DHCP server1
- DHCP server2

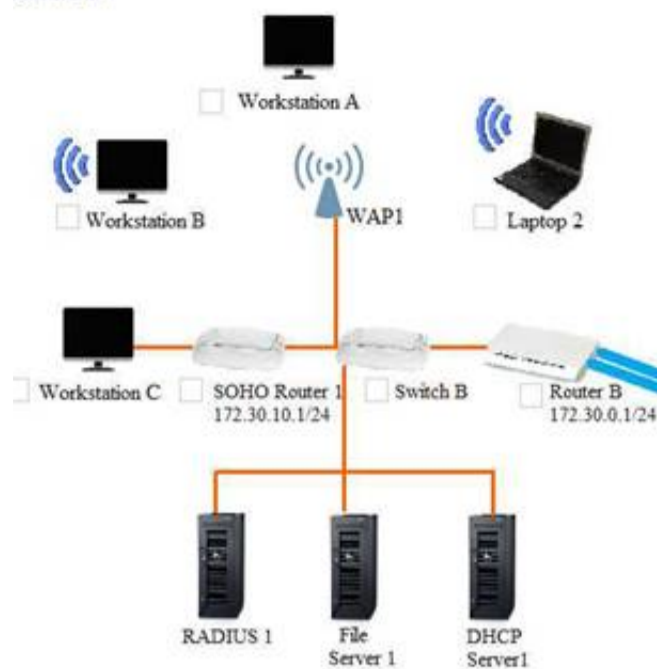
Review the settings and select the box in the diagram that identifies the device causing the issue. Only one device can be selected at a time.

After checking the device that is causing the issue, select the second tab in the lower left hand corner. Identify the reason as to why some users are unable to access the network.

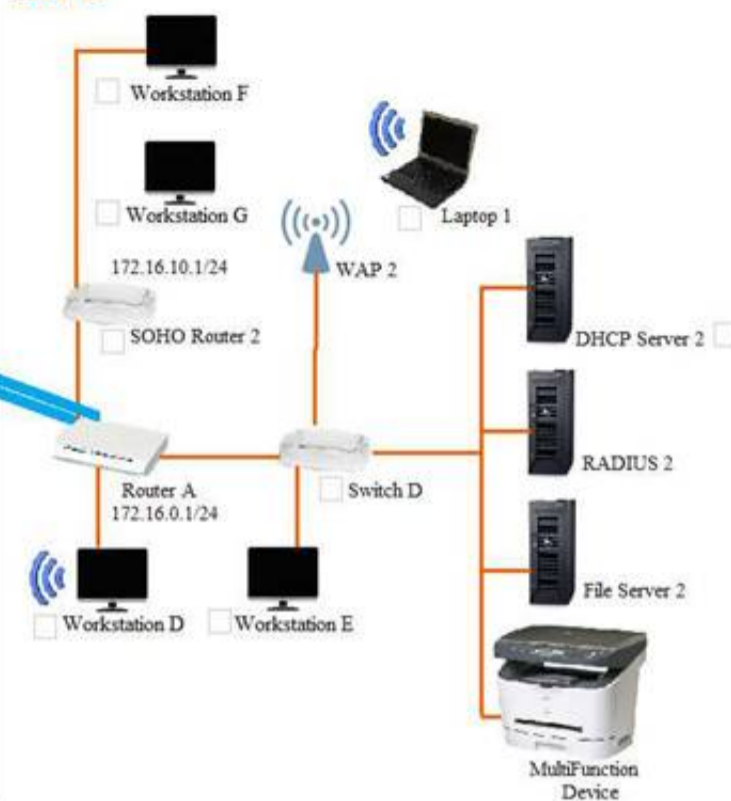
### Site A and B Network Diagram

Instructions: Only one device can be selected at a time. Please ensure you complete Part 1 and Part 2 of the simulation.

#### SITE A



#### SITE B



#### WORKSTATION A

IP Address	172.30.0.10
Netmask	255.255.255.0
Gateway	172.30.0.1

OK

#### WORKSTATION B

IP Address	172.30.0.14
Netmask	255.255.255.0
Gateway	172.30.0.1

OK

#### WORKSTATION C

IP Address	169.254.200.67
Netmask	255.255.255.0
Gateway	

OK

#### WORKSTATION D

IP Address	172.16.0.221
Netmask	255.255.255.0
Gateway	172.16.0.1

OK

#### WORKSTATION E

IP Address	172.16.0.21
Netmask	255.255.255.0
Gateway	172.16.0.1

OK

#### WORKSTATION F

IP Address	172.16.10.43
Netmask	255.255.255.0
Gateway	172.16.10.1

OK

**WORKSTATION G**

IP Address	172.16.10.120
Netmask	255.255.255.0
Gateway	172.16.10.1

**LAPTOP 1**

IP Address	172.16.0.220
Netmask	255.255.255.0
Gateway	172.16.0.1

**LAPTOP 2**

IP Address	172.30.0.12
Netmask	255.255.255.0
Gateway	172.30.0.1

**DHCP SERVER 1**

IP Address	172.30.0.5
Netmask	255.255.255.0
Gateway	172.30.0.1

DHCP Scope	172.30.0.10-250
Gateway	172.30.0.1
DNS Servers	10.200.2.20, 10.200.3.20
DHCP Lease Time	8 days

**DHCP SERVER 2**

IP Address	172.30.0.5
Netmask	255.255.255.0
Gateway	172.16.0.1

DHCP Scope	172.16.0.10-250
Gateway	172.16.0.1
DNS Servers	10.200.2.20, 10.200.3.20
DHCP Lease Time	8 days

Part 2

Identify the reason as to why some users are unable to access the network.

- A. Workstation(s) are plugged into switch ports configured with half duplex.
- B. The site-to-site router was configured with the incorrect ACL.
- C. DHCP server scope is full and is not providing IP addresses.
- D. WAN and LAN ports are reversed on the router.
- E. STP had disabled some of the ports on the switch.
- F. The NIC driver is not installed.
- G. A wireless client is unable to associate to the AP.

**Answer:** G

#### NEW QUESTION 256

- (Exam Topic 1)

Which of the following would be the MOST efficient subnet mask for a point-to-point link?

- A. /28
- B. /29

C. /31  
D. /32

**Answer:** C

#### NEW QUESTION 257

- (Exam Topic 1)

A user reports difficulties connecting a PC to a wired network. The PC connects to an IP phone, which is working correctly. A network technician can verify that other devices successfully connect to the phone. At which of the following layers of the OSI model is the problem MOST likely located?

- A. Network
- B. Physical
- C. Transport
- D. Application

**Answer:** A

#### NEW QUESTION 261

- (Exam Topic 1)

A technician is trying to configure a previously owned WAP. The technician successfully logs into the administrative console and attempts to input the IP address on the WAP. However, the WAP is not accepting the command. Which of the following is causing the problem?

- A. The WAP antenna is damaged
- B. The WAP transmitter light is dim
- C. The terminal emulation software is misconfigured
- D. The LWAPP image is installed on the WAP

**Answer:** C

#### NEW QUESTION 264

- (Exam Topic 1)

A network technician is troubleshooting an end-user connectivity problem. The network technician goes to the appropriate IDF but is unable to identify the appropriate cable due to poor labeling. Which of the following should the network technician use to help identify the appropriate cable?

- A. Tone generator
- B. Multimeter
- C. OTDR
- D. Loopback adapter

**Answer:** A

#### NEW QUESTION 265

- (Exam Topic 1)

A network engineer is designing a new network for a remote site. The remote site consists of ten desktop computers, ten VoIP phones, and two network printers. In addition, two of the desktop computers at the remote site will be used by managers who should be on a separate network from the other eight computers. Which of the following represents the BEST configuration for the remote site?

- A. One router connected to one 24-port switch configured with three VLANs: one for the manager's computers and printer, one for the other computers and printer, and one for the VoIP phones
- B. Two routers with each router connected to a 12-port switch, with a firewall connected to the switch connected to the manager's desktop computers, VoIP phones, and printer
- C. One router connected to one 12-port switch configured for the manager's computers, phones, and printer, and one 12-port switch configured for the other computers, VoIP phones, and printer
- D. One router connected to one 24-port switch configured with two VLANs: one for the manager's computers, VoIP phones, and printer, and one for the other computers, VoIP phones, and printer

**Answer:** A

#### NEW QUESTION 270

- (Exam Topic 1)

A technician is diagnosing an issue with a new T1 connection. The router is configured, the cable is connected, but the T1 is down. To verify the configuration of the router, which of the following tools should the technician use?

- A. Loopback adapter
- B. Cable tester
- C. Tone generator
- D. Multimeter

**Answer:** A

#### NEW QUESTION 273

- (Exam Topic 1)

Which of the following BEST describes an exploit?

- A. A router with default credentials
- B. An open mail relay server
- C. A SNMPv1 private community

D. A privilege escalation script

**Answer:** D

#### NEW QUESTION 275

- (Exam Topic 1)

A company is allowing its employees to use their personal computers, tables, and IoT devices while at work. However, there are rules and guidelines to which employees must adhere. Which of the following documents applies to these employees?

- A. NDA
- B. SOP
- C. BYOD
- D. SLA

**Answer:** C

#### NEW QUESTION 278

- (Exam Topic 1)

Users have been experiencing slow network response times, and management has asked the network technician to provide evidence of network improvement. After optimizing the network, which of the following would be required?

- A. IDF/MDF documentation
- B. Change management
- C. Performance baseline
- D. Physical diagram

**Answer:** C

#### NEW QUESTION 281

- (Exam Topic 1)

Users in a school lab are reporting slow connections to the servers and the Internet. Other users in the school have no issues. The lab has 25 computers and is connected with a single 1Gb Ethernet connection on Cat 5e wiring to an unmanaged switch. There are also three spare Cat 5e cable runs, which are not in use. The school wants to double the connection speed between the lab and the servers without running new cables. Which of the following would be the BEST solution?

- A. Plug in a second spare cable at each end to double the speed.
- B. Replace the switches with ones that utilize port bonding and use the spare cables.
- C. Replace the switches with 10Gb switches and utilize the existing cabling.
- D. Plug in a second cable and set one port to TX and one port to RX.

**Answer:** B

#### NEW QUESTION 282

- (Exam Topic 1)

A network administrator configures an email server to use secure protocols. When the upgrade is completed, which of the following ports on the firewall should be configured to allow for connectivity? (Choose three.)

- A. TCP 25
- B. TCP 110
- C. TCP 143
- D. TCP 389
- E. TCP 587
- F. TCP 993
- G. TCP 995

**Answer:** EFG

#### NEW QUESTION 283

- (Exam Topic 1)

Which of the following WAN technologies is MOST preferred when developing a VoIP system with 23 concurrent channels?

- A. DSL
- B. POTS
- C. T1
- D. DOCSIS

**Answer:** C

#### NEW QUESTION 288

- (Exam Topic 1)

A network technician has implemented ACLs to limit access to cloud-based file storage. Which of the following security mechanisms has the technician enforced?

- A. DLP
- B. IDS
- C. WAF
- D. WPA
- E. TPM

Answer: C

#### NEW QUESTION 293

- (Exam Topic 1)

A technician has racked a new access switch and has run multimode fiber to a new location. After installing an extended-range 10Gb SFP in the core switch, the technician installed a 10Gb SFP in the access switch and connected the port to the new extension with a fiber jumper. However, the link does not display, and the technician cannot see light emitting from the core switch. Which of the following solutions is MOST likely to resolve the problem?

- A. Swap the fiber pairs in one of the SFPs
- B. Replace the jumpers with single-mode fiber
- C. Set the correct MTU on the new interface
- D. Install an optic that matches the fiber type

Answer: B

#### NEW QUESTION 298

- (Exam Topic 1)

An administrator is moving to a new office. There will be several network runs through the ceiling area of the office. Which of the following is the BEST to utilize in these areas?

- A. Single-mode fiber-optic cabling
- B. Cat 5e-rated cabling
- C. Cat 6-rated cabling
- D. Plenum-rated cabling

Answer: D

#### NEW QUESTION 300

- (Exam Topic 1)

According to the OSI model, at which of the following layers is data encapsulated into a packet?

- A. Layer 2
- B. Layer 3
- C. Layer 4
- D. Layer 5
- E. Layer 6

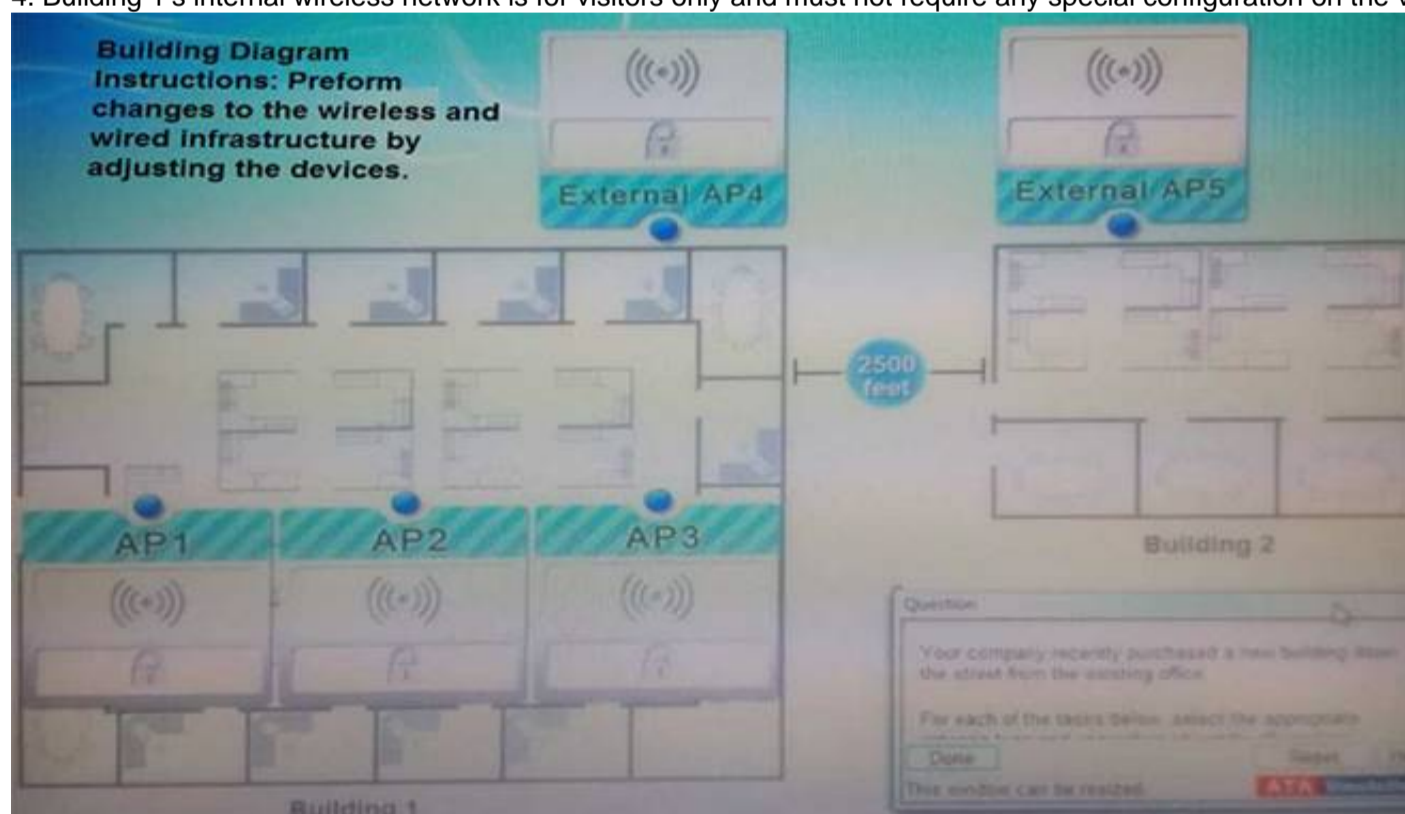
Answer: B

#### NEW QUESTION 305

- (Exam Topic 1)

Your company recently purchased a new building down the street from the existing office. For each of the tasks below, select the appropriate antenna type and encryption object for all wireless access point (AP).

1. Create an encrypted wireless connection between the two buildings that BEST controls signal propagation, while maximizing security.
2. Restrict the wireless signal generated by the access points (APs) inside Building 1, so that it minimizes broadcast beyond the building.
3. Maximize wireless coverage inside Building 1.
4. Building 1's internal wireless network is for visitors only and must not require any special configuration on the visitor's device to connect.



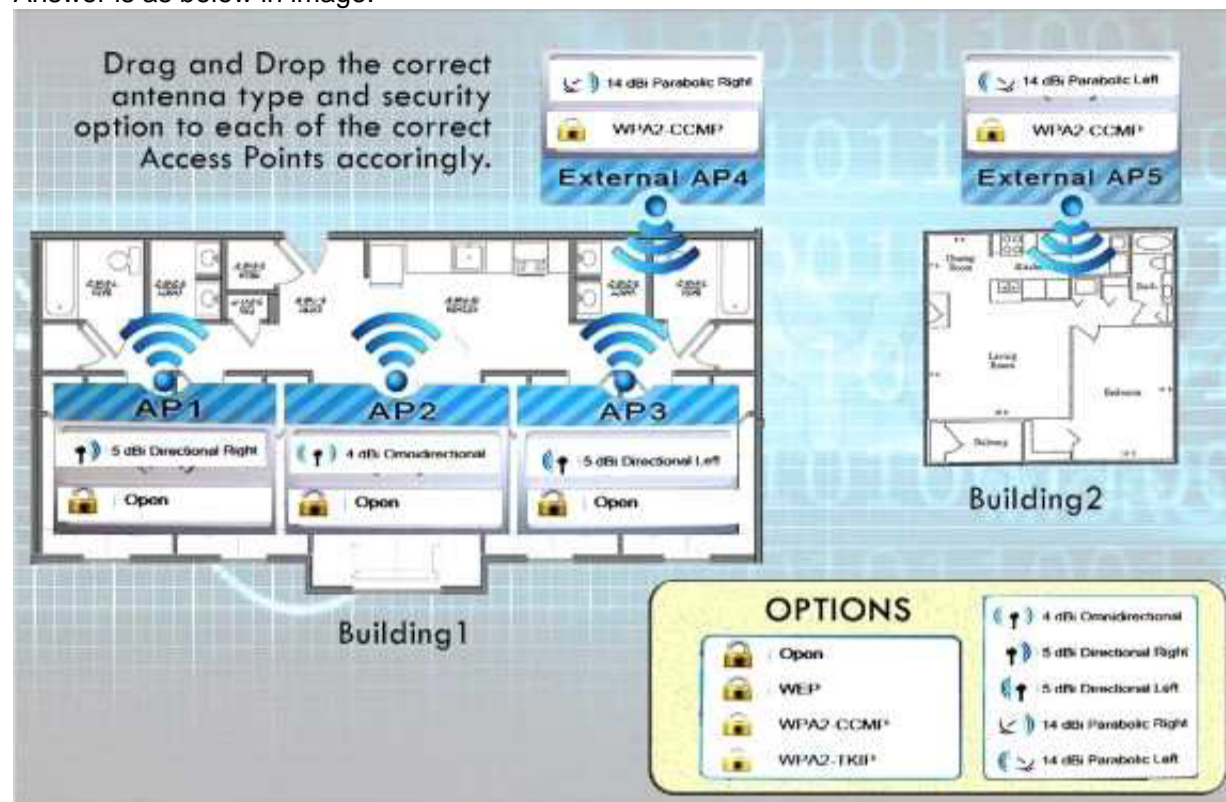
Instructions: When you have completed the simulation, select the Done button to submit.

- A. Mastered
- B. Not Mastered

Answer: A

Explanation:

Answer is as below in image.



### NEW QUESTION 309

- (Exam Topic 1)

Which of the following will listen on the line to ensure there is no traffic transmitting and implement a back-off timer if a collision occurs?

- A. CSMA/CD
- B. CSMA/CA
- C. MPLS
- D. OSPF

**Answer:** A

### NEW QUESTION 313

- (Exam Topic 1)

A network technician is building a network for a small office. The office currently has cable TV and now requires access to the Internet without adding any cabling other than what is already in place. Which of the following solutions should the technician install to meet these requirements?

- A. DOCSIS modem
- B. Wireless router
- C. DSL modem
- D. Access point

**Answer:** A

### NEW QUESTION 314

- (Exam Topic 1)

A network technician receives a spool of Cat 6a cable and is asked to build several cables for a new set of Ethernet runs between devices. Which of the following tools are MOST likely needed to complete the task? (Choose three.)

- A. Wire stripper
- B. Cable crimper
- C. RJ-11 connectors
- D. RJ-45 connectors
- E. Multimeter
- F. Punchdown tool
- G. Tone generator

**Answer:** ABD

### NEW QUESTION 315

- (Exam Topic 1)

A technician wants to deploy a network that will require wireless client devices to prompt for a username and password before granting access to be the wireless network. Which of the following must be configured to implement this solution?

- A. EAP-PEAP
- B. CCMP-AES
- C. WPA2-PSK
- D. TKIP-RC4

**Answer:** A

### NEW QUESTION 319

- (Exam Topic 2)

Which of the following default ports would need to be disabled to block TFTP traffic?

- A. 20
- B. 21
- C. 69
- D. 123

**Answer:** C

#### NEW QUESTION 320

- (Exam Topic 2)

Tenants access multiple wireless networks in a building. Users report intermittent connectivity. Which of the following is the MOST likely cause of the problem?

- A. The channels are overlapping with other wireless networks and should be changed.
- B. The SSIDs are incompatible and should be renamed.
- C. The users have incompatible wireless network cards and should upgrade.
- D. The default idle period for logoff is too short and should be changed to a longer limit.

**Answer:** A

#### NEW QUESTION 325

- (Exam Topic 2)

Which of the following uses port 53 by default?

- A. RDP
- B. QoS
- C. DHCP
- D. DNS

**Answer:** D

#### NEW QUESTION 326

- (Exam Topic 2)

The software that allows a machine to run multiple operating systems at once is called the:

- A. Server manager
- B. Hypervisor
- C. Boot loader
- D. Partition manager

**Answer:** B

#### NEW QUESTION 330

- (Exam Topic 2)

Which of the following ports is the default telnet port?

- A. 20
- B. 21
- C. 22
- D. 23

**Answer:** D

#### NEW QUESTION 332

- (Exam Topic 2)

Which of the following uses types and codes rather than ports?

- A. EIGRP
- B. ICMP
- C. UDP
- D. IPv6

**Answer:** B

#### NEW QUESTION 336

- (Exam Topic 2)

Which of the following is an IPv6 address?

- A. 00:14:38:05:7B:E5
- B. 10.10.1.1
- C. 192.168.1.1
- D. 2001:cdba::3257:9652

**Answer:** D

#### NEW QUESTION 337

- (Exam Topic 2)

Which of the following mediums is circuit switched?

- A. PSTN
- B. ATM
- C. Frame relay
- D. MPLS

**Answer:** A

#### NEW QUESTION 338

- (Exam Topic 2)

Which of the following is true about tunneling and encryption?

- A. SIP encrypts all data going through the tunnel.
- B. PPTP creates a secure tunnel.
- C. SSL VPN provides a secure tunnel.
- D. RAS is a secure way to create a tunnel.

**Answer:** C

#### NEW QUESTION 343

- (Exam Topic 2)

Which of the following default ports would need to be open on a firewall to allow remote desktop access?

- A. 143
- B. 443
- C. 3389
- D. 8080

**Answer:** C

#### NEW QUESTION 348

- (Exam Topic 2)

Which of the following is a secure way to connect to a device?

- A. RSH
- B. TFTP
- C. SNMPv2
- D. SFTP

**Answer:** D

#### NEW QUESTION 350

- (Exam Topic 2)

A company has just installed wireless in their office. In one corner of the office building users are not able to establish a connection. Which of the following can be changed on the AP to help resolve this issue?

- A. SSID
- B. Channels
- C. Signal strength
- D. Encryption

**Answer:** C

#### NEW QUESTION 354

- (Exam Topic 2)

A company has installed an access point and configured it to broadcast at 802.11n only. Some users are stating that they cannot connect to this access point.

Which of the following is the MOST likely reason some users cannot connect?

- A. Incorrect channel
- B. Weak encryption
- C. Incompatible NICs
- D. Incorrect SSID

**Answer:** C

#### NEW QUESTION 359

- (Exam Topic 2)

Use of group accounts should be minimized to ensure which of the following?

- A. Password security
- B. Regular auditing
- C. Baseline management
- D. Individual accountability

**Answer:** D

**NEW QUESTION 362**

- (Exam Topic 2)

Which of the following devices should be installed on a network to monitor the presence of and actively defend against attacks?

- A. An IPS
- B. A protocol analyzer
- C. A traffic shaper
- D. An IDS

**Answer:** A

**NEW QUESTION 365**

- (Exam Topic 2)

Which of the following ports would have to be allowed through a firewall to allow SNMP traffic to pass on its default port? (Select TWO).

- A. 22
- B. 23
- C. 143
- D. 161
- E. 162
- F. 8080

**Answer:** DE

**NEW QUESTION 367**

- (Exam Topic 2)

Jeff, a network engineer, is troubleshooting an issue where clients are not receiving IP addresses from a new, properly configured DHCP server on another subnet. Statically addressed clients can get onto the same network with no issues. Which of the following is causing the issue?

- A. Incorrect VLAN tagging
- B. Missing helper addresses
- C. Wrong default gateway
- D. Improper routing protocols

**Answer:** B

**NEW QUESTION 368**

- (Exam Topic 2)

Which of the following protocols is used to transmit outgoing email?

- A. RDP
- B. NTP
- C. POP3
- D. SMTP

**Answer:** D

**NEW QUESTION 369**

- (Exam Topic 2)

In order to reduce spam email, Kim, a network administrator, changes the standard SMTP port from which of the following port numbers to port number 587?

- A. 20
- B. 21
- C. 23
- D. 25

**Answer:** D

**NEW QUESTION 373**

- (Exam Topic 2)

Which of the following cables has the MOST twists per inch?

- A. CAT3
- B. CAT5
- C. CAY5e
- D. CAT6

**Answer:** D

**NEW QUESTION 378**

- (Exam Topic 2)

Which of the following uses certificates as a form of security?

- A. Kerberos
- B. LDAP
- C. PKI

D. CHAP

**Answer:** C

**NEW QUESTION 381**

- (Exam Topic 2)

A computer on VLAN 10 with the IP address of 192.168.1.45/27 cannot ping a computer on VLAN 20 with the IP address of 192.168.1.65/27. Which configuration change will allow the PING to be successful?

- A. Replace the router with a Layer 2 switch that supports VLANs
- B. Change VLAN 20 computers Default Gateway to 192.168.1.127/27
- C. Change VLAN 10 computers Default Gateway to 192.168.1.32/27
- D. Allow ICMP to pass through the Router

**Answer:** D

**NEW QUESTION 382**

- (Exam Topic 2)

Kurt, a network technician, has configured a new firewall on the network. Users are reporting errors when attempting to access several websites. Kurt attempts to access several popular websites with no errors, however, he does receive an error when attempting to access a bank website. Which of the following rules would BEST allow access to the bank website?

- A. Allow UDP port 53
- B. Allow TCP port 80
- C. Allow UDP port 340
- D. Allow TCP port 443

**Answer:** D

**NEW QUESTION 384**

- (Exam Topic 2)

Privilege creep among long-term employees can be mitigated by which of the following procedures?

- A. User permission reviews
- B. Mandatory vacations
- C. Separation of duties
- D. Job function rotation

**Answer:** A

**NEW QUESTION 389**

- (Exam Topic 2)

Which of the following protocols would Kurt, a technician, use to synchronize local date and time of a client workstation to that of a server?

- A. RTP
- B. NTP
- C. TFTP
- D. ARP

**Answer:** B

**NEW QUESTION 390**

- (Exam Topic 2)

Which of the following protocols are used to connect devices in a secure manner? (Select TWO).

- A. TELNET
- B. SSH
- C. RDP
- D. HTTP
- E. DNS
- F. FTP

**Answer:** BC

**NEW QUESTION 392**

- (Exam Topic 2)

Matt, an administrator, notices a flood fragmented packet and retransmits from an email server. After disabling the TCP offload setting on the NIC, Matt sees normal traffic with packets flowing in sequence again. Which of the following utilities was he MOST likely using to view this issue?

- A. Spam filter
- B. Protocol analyzer
- C. Web application firewall
- D. Load balancer

**Answer:** B

**NEW QUESTION 394**

- (Exam Topic 2)

Which of the following MUST be used when securing a VoIP network consisting of private IP addresses?

- A. IPS
- B. Application layer firewall
- C. IDS
- D. An unmanaged switch

**Answer:** B

**NEW QUESTION 399**

- (Exam Topic 2)

Which of the following wireless standards is capable of ONLY operating on 5.8GHz?

- A. 802.11a
- B. 802.11b
- C. 802.11g
- D. 802.11n

**Answer:** A

**NEW QUESTION 404**

- (Exam Topic 2)

Which of the following is the network topology in which computers connect in a closed circle?

- A. Bus
- B. Mesh
- C. Ring
- D. Star

**Answer:** C

**NEW QUESTION 406**

- (Exam Topic 2)

Kim, a network technician, is installing an 802.11n network. Which of the following should Kim enable to ensure that the network only allows 802.11n clients?

- A. Name the SSID on the 802.11n network only
- B. Limit the DHCP address pool
- C. Disable 802.11b and 802.11g
- D. Only use WPA encryption

**Answer:** C

**NEW QUESTION 408**

- (Exam Topic 2)

After plugging a cable into a computer, a user reports there is no network access. Which of the following tools would the technician MOST likely check to verify that the cable was crimped correctly?

- A. Punch down tool
- B. Cable certifier
- C. Loopback plug
- D. Toner probe

**Answer:** B

**NEW QUESTION 410**

- (Exam Topic 2)

Which of the following is the MOST economical way for Sandy, a technician, to implement 10- Gigabit Ethernet at a datacenter?

- A. 10GBaseLR
- B. 10GBaseSR
- C. 10GBaseX
- D. 10GBaseT

**Answer:** D

**NEW QUESTION 413**

- (Exam Topic 2)

An organization has installed a new firewall. Users need to have access to remote websites and must be able to use SSH to retrieve files from remote locations. Which of the following actions should be taken on the new firewall? (Select TWO).

- A. Allow UDP port 21 outbound
- B. Allow UDP port 22 outbound
- C. Allow UDP port 80 outbound
- D. Allow TCP port 21 outbound
- E. Allow TCP port 22 outbound

F. Allow TCP port 80 outbound

**Answer:** EF

**NEW QUESTION 417**

- (Exam Topic 2)

Which of the following is indicative of an FTP bounce?

- A. Arbitrary IP address
- B. Reverse DNS lookups
- C. Same Port Number
- D. File Transfer Success

**Answer:** A

**NEW QUESTION 421**

- (Exam Topic 2)

Which of the following functions would be used to securely monitor and actively manage external connections?

- A. VPN concentrator
- B. HIDS
- C. Load balancer
- D. Packet shaper

**Answer:** A

**NEW QUESTION 425**

- (Exam Topic 2)

Which of the following is the default subnet mask for a Class B address?

- A. 255.0.0.0
- B. 255.255.0.0
- C. 255.255.255.0
- D. 255.255.255.255

**Answer:** B

**NEW QUESTION 427**

- (Exam Topic 2)

Which of the following is the BEST way to mitigate security threats on a network?

- A. Social engineering
- B. User training
- C. Incident response
- D. Man-in-the- middle

**Answer:** B

**NEW QUESTION 429**

- (Exam Topic 2)

A pest control contractor attempts to gain access to the datacenter; however, the manager on duty notes that a pest control inspection was not on the schedule.

Which of the following attacks is in progress?

- A. Phishing
- B. Social engineering
- C. Man-in-the-middle
- D. Smurfing

**Answer:** B

**NEW QUESTION 431**

- (Exam Topic 2)

Which of the following MUST be kept synchronized in order for Kerberos to work?

- A. Certificate
- B. Ticket
- C. Time
- D. Token

**Answer:** C

**NEW QUESTION 433**

- (Exam Topic 2)

Which of the following WAP security features offers the STRONGEST encryption?

- A. WPA
- B. WPA2
- C. WEP
- D. Hidden SSID

**Answer:** B

**NEW QUESTION 438**

- (Exam Topic 2)

A user is unable to print to a network printer. Which of following is the FIRST step that a technician should take to troubleshoot the issue?

- A. Identify the problem.
- B. Establish a plan of action to resolve the problem.
- C. Establish a theory of probable cause.
- D. Implement preventative measures.

**Answer:** A

**NEW QUESTION 439**

- (Exam Topic 2)

Which of the following devices exist as either hardware or software to assist in routing traffic? (Select TWO).

- A. Cable modem
- B. Layer 2 switch
- C. Router
- D. NIDS
- E. Layer 3 switch

**Answer:** CE

**NEW QUESTION 443**

- (Exam Topic 2)

Which of the following protocols would be used to send email to an email server?

- A. NTP
- B. FTP
- C. SNMP
- D. SMTP

**Answer:** D

**NEW QUESTION 447**

- (Exam Topic 2)

Which of the following ports does DHCP use? (Select TWO).

- A. 22
- B. 23
- C. 67
- D. 68
- E. 69

**Answer:** CD

**NEW QUESTION 451**

- (Exam Topic 2)

A VoIP line will MOST likely have which of the following connectors?

- A. RJ-11
- B. DB-25
- C. BNC
- D. RJ-45

**Answer:** D

**NEW QUESTION 456**

- (Exam Topic 2)

A technician, Joe, visits a site that has reported a network down emergency. He immediately reboots the switches and the router since the network is down. Which of the following network troubleshooting methodology steps should Joe have performed FIRST?

- A. Determine if anything has changed
- B. Once a theory is confirmed determine the next step is to resolve the problem
- C. Implement the solution or escalate as necessary
- D. Question the obvious

**Answer:** A

**NEW QUESTION 457**

- (Exam Topic 2)

An administrator is replacing an existing WAP because the customer is reporting that the connection speeds are too slow. Which of the following should be installed?

- A. 802.11a
- B. 802.11b
- C. 802.11g
- D. 802.11n

**Answer:** D

**NEW QUESTION 462**

- (Exam Topic 2)

Which of the following is true about an IP address if the first bit is a one and the second bit is a zero?

- A. The address is a Class A address.
- B. The address is a Class B address.
- C. The address is a Class C address.
- D. The address is a Class D address.

**Answer:** B

**NEW QUESTION 466**

- (Exam Topic 2)

Something you have, something you are, and something you know are the three tenets of:

- A. Social engineering
- B. Change management
- C. Remote access
- D. Access control

**Answer:** D

**NEW QUESTION 469**

- (Exam Topic 2)

Which of the following DNS records would allow for a website to have more than one FQDN?

- A. TXT
- B. PTR
- C. MX
- D. CNAME

**Answer:** D

**NEW QUESTION 471**

- (Exam Topic 2)

Which of the following technologies is required to allow all ports of a single private IP to be publically accessible via a single public IP?

- A. NAT
- B. RIP
- C. PAT
- D. ACL

**Answer:** C

**NEW QUESTION 476**

- (Exam Topic 2)

Which of the following describes a DNS server?

- A. Translates an IP address to a name
- B. Caches commonly viewed web pages
- C. Assigns IP addresses to network devices
- D. Provides port security for a network

**Answer:** A

**NEW QUESTION 481**

- (Exam Topic 2)

Which of the following commands will display the associated IP address of a network adapter in Windows and Linux environments? (Select TWO).

- A. dig
- B. nslookup
- C. nbstat
- D. ifconfig
- E. ipconfig

**Answer:** DE

**NEW QUESTION 483**

- (Exam Topic 3)

A national cable company providing TV, telephone, and Internet service to home users over its IP network, has been tracking a large increase of network bandwidth due to P2P file sharing. Which of the following should the company deploy to ensure excellent TV and telephone service?

- A. QoS
- B. Load balancing
- C. High availability
- D. Fiber optics

**Answer:** A

**NEW QUESTION 485**

- (Exam Topic 3)

Which of the following BEST describes the difference between layer 2 switching and layer 2 routing?

- A. Switching moves packets between hosts on different subnets, and routing moves packets between hosts on the same subnet.
- B. Routing moves packets between hosts on different subnets, and switching moves packets between hosts on the same subnet.
- C. Both routing and switching move packets between hosts on the same subnet, but routing does so at a faster pace.
- D. Both routing and switching move packets between hosts on different subnets, but switching does so at a faster pace.

**Answer:** B

**NEW QUESTION 487**

- (Exam Topic 3)

Which of the following protocols is used to securely connect to a multi-layer switch?

- A. HTTP
- B. SMTP
- C. SSH
- D. Telnet

**Answer:** C

**NEW QUESTION 488**

- (Exam Topic 3)

A user has no network connectivity. Jeff, the network technician, is unable to locate the CAT5e cable from the user at the IDF. Which of the following tools would be used to assist Jeff in locating the CAT5e cable?

- A. Butt set
- B. Punch down tool
- C. Toner probe
- D. Protocol analyzer

**Answer:** C

**NEW QUESTION 491**

- (Exam Topic 3)

A network administrator notices that all of the company switches are running at capacity on a given day, which is abnormal according to network baselines taken recently. Which tool would BEST allow the administrator to inspect what type of traffic is on the network?

- A. Wire tap
- B. Network sniffer
- C. Load balancing appliance
- D. NIPS

**Answer:** B

**NEW QUESTION 493**

- (Exam Topic 3)

Which of the following problems is MOST likely to arise when configuring an IPv6 over IPv4 tunnel?

- A. Routing loop
- B. MTU black hole
- C. Framing errors
- D. SYN flood

**Answer:** B

**NEW QUESTION 495**

- (Exam Topic 3)

A company only wants preapproved laptops to be able to connect to a wireless access point. Which of the following should be configured?

- A. SSID disable
- B. ACL rules
- C. WPA encryption
- D. MAC filtering

**Answer:** D

#### NEW QUESTION 499

- (Exam Topic 3)

An administrator hosts all of the company's virtual servers internally. In the event of total server failure, the server images can be restored on a cloud provider and accessed through the VPN.

Which of the following cloud services is the administrator using?

- A. Community PaaS
- B. Public IaaS
- C. Hybrid SaaS
- D. Private IaaS

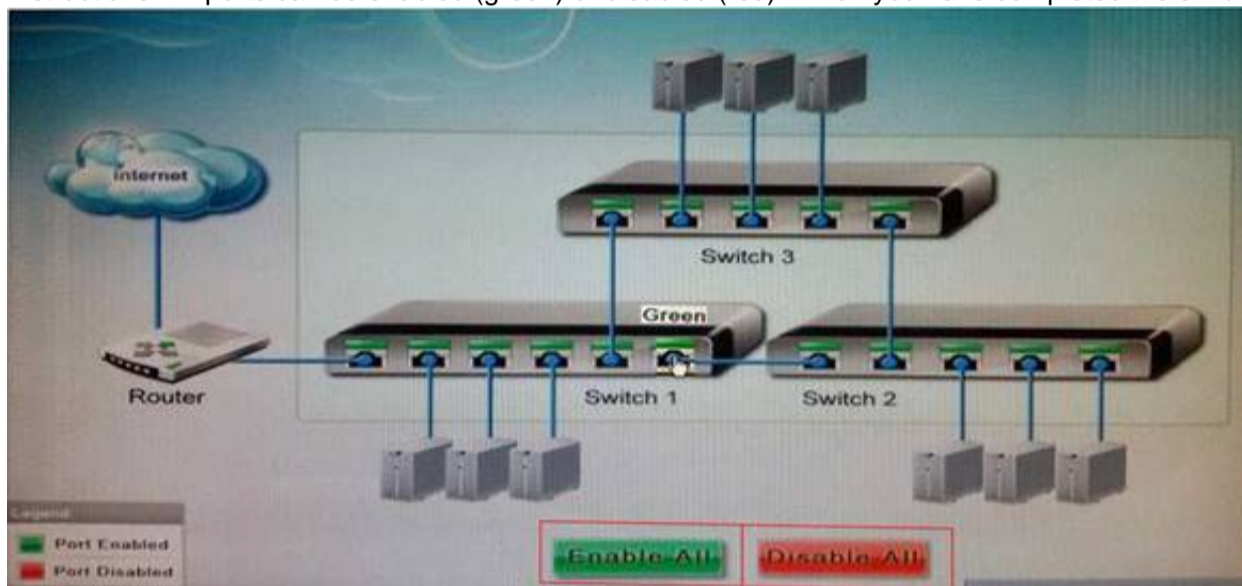
**Answer:** B

#### NEW QUESTION 503

- (Exam Topic 3)

Workstations are unable to access the Internet after a recent power outage. Configure the appropriate devices to ensure ALL workstations have Internet connectivity.

Instructions: All ports can be enabled (green) or disabled (red). When you have completed the simulation please select the Done button.



- A. Mastered
- B. Not Mastered

**Answer:** A

#### Explanation:

All ports should be enabled.

#### NEW QUESTION 508

- (Exam Topic 3)

Which of the following does the IP address 169.254.222.10 indicate?

- A. No DHCP server connectivity
- B. The DNS server is unavailable
- C. Firewall issue
- D. Duplicate IP addresses are found

**Answer:** A

#### NEW QUESTION 511

- (Exam Topic 3)

A customer has not been using security on a wireless network and has recently received many attacks through this vector.

Which of the following would be the MOST secure way to harden this wireless network?

- A. Disable the SSID
- B. WPA encryption
- C. VLAN implementation
- D. WEP encryption

**Answer:** B

#### NEW QUESTION 515

- (Exam Topic 3)

Which of the following should be implemented in a networked environment carrying teleconferencing packets?

- A. L2TP
- B. SSH
- C. QoS
- D. SNMP

**Answer:** C

#### NEW QUESTION 520

- (Exam Topic 3)

A network technician is installing a simple SOHO router with wireless functionality. Which of the following wireless encryption standards would be BEST suited for the HIGHEST level of security?

- A. WPA2
- B. WPA
- C. WEP64
- D. WEP128

**Answer:** A

#### NEW QUESTION 523

- (Exam Topic 3)

Which of the following DNS records allows for reverse lookup of a domain?

- A. PTR
- B. AAAA
- C. A
- D. MX

**Answer:** A

#### NEW QUESTION 527

- (Exam Topic 3)

Which of the following is an example of two factor authentication?

- A. Password, device certificate and PIN
- B. SSL web server certificate and password
- C. User password and administrator password
- D. Password and hardware token OTP

**Answer:** D

#### NEW QUESTION 529

- (Exam Topic 3)

Which of the following devices are MOST often responsible for 1q tagging? (Select TWO).

- A. Switch
- B. Router
- C. IDS
- D. Hub
- E. IPS
- F. Network tap

**Answer:** AB

#### NEW QUESTION 531

- (Exam Topic 3)

An organization wants to perform maintenance on any of its web servers without affecting the service availability during a scheduled change window. Which of the following network devices would be required to provide this functionality?

- A. Router
- B. Forward proxy
- C. Load balancer
- D. Firewall

**Answer:** C

#### NEW QUESTION 532

- (Exam Topic 3)

Which of the following is the correct representation of an IPv6 address?

- A. ::
- B. 0:0:0:0:0:0:0:1
- C. 1:2:3:4:AB:CD:EF
- D. 2001::4860:800f::

**Answer:** A

**NEW QUESTION 534**

- (Exam Topic 3)

Which of the following methods limits access to a network based on characteristics of the network card?

- A. IP filtering
- B. MAC filtering
- C. Port filtering
- D. Encryption

**Answer:** B

**NEW QUESTION 538**

- (Exam Topic 3)

A technician needs to verify an Ethernet run is functioning properly. Which of the following tools should be used?

- A. Protocol analyzer
- B. Crimper
- C. Cable tester
- D. Punch down tool

**Answer:** C

**NEW QUESTION 541**

- (Exam Topic 3)

Which of the following 802.11n features allows for the use of multiple simultaneous frequencies in order to increase usable bandwidth?

- A. Channel bonding
- B. MIMO
- C. Spatial reuse
- D. 20MHz channel spacing

**Answer:** A

**NEW QUESTION 546**

- (Exam Topic 3)

An administrator is setting up a secure wireless network. The administrator decides to support 802.11n and 802.11g with a WPA2 pre-shared key. Users are given the SSID with the pre-shared key, but the administrator has disabled the SSID broadcast and MAC filtering. Some users have reported connection issues. Which of the following would MOST likely resolve the users' connection issues?

- A. Limit the devices to 802.11n only.
- B. Enable the SSID broadcast.
- C. Enable MAC filtering.
- D. Use a WEP 128-bit key.

**Answer:** B

**NEW QUESTION 548**

- (Exam Topic 3)

Which of the following security threats relies primarily on user deception and misinformation?

- A. Rogue access points
- B. DoS attacks
- C. Man-in-the-middle attacks
- D. Phishing

**Answer:** D

**NEW QUESTION 550**

- (Exam Topic 3)

A Windows server has a problem after booting up. Kim, a technician, should immediately check the:

- A. history logs.
- B. cron logs.
- C. application logs.
- D. system logs.

**Answer:** D

**NEW QUESTION 555**

- (Exam Topic 3)

A SOHO with ten Wi-Fi equipped laptops needs a new network installed. Which of the following items would be used to setup the office using a new DSL line? (Select TWO).

- A. Router
- B. Wi-Fi Access point
- C. Cable modem
- D. Ten WiMAX adapters

E. Ten CAT6 patch cables

**Answer:** AB

**NEW QUESTION 559**

- (Exam Topic 3)

A user is getting very weak signals while trying to connect to the wireless. Which of the following should the user do to help with signal strength?

- A. Call the wireless provider and ask for a T3 circuit.
- B. Move the wireless router to a better location where line of sight is obtained.
- C. Reinstall the operating system to the PC to ensure the newest patches are installed.
- D. Install a hub to ensure there is a clear path for the cables to run.

**Answer:** B

**NEW QUESTION 560**

- (Exam Topic 3)

When configuring a WAP for a SOHO, which parameter will BEST limit access to the office area?

- A. Signal strength
- B. SSID enable
- C. Encryption
- D. Password hardening

**Answer:** A

**NEW QUESTION 561**

- (Exam Topic 3)

A network technician is troubleshooting intermittent issues with VoIP call quality. A throughput tester can help assess the functionality of which of the following?

- A. LLDP
- B. VLAN tagging
- C. QoS
- D. SIP trunking

**Answer:** C

**NEW QUESTION 562**

- (Exam Topic 3)

When using high bandwidth applications over multiple WAN connections, which of the following should be used?

- A. Static IP addressing
- B. Half-duplex
- C. PoE devices
- D. Load balancing

**Answer:** D

**NEW QUESTION 565**

- (Exam Topic 3)

Which of the following is networking stand-alone hardware that will permit any WiFi-compliant device to connect to a network?

- A. Wireless hub
- B. Wireless firewall
- C. Wireless access point
- D. Wireless bridge

**Answer:** C

**NEW QUESTION 570**

- (Exam Topic 3)

A technician replaces a customer's router, and is now unable to ping the ISP's gateway. Which of the following should the technician check?

- A. The arp table of the new customer's router.
- B. The route table of the next-hop router.
- C. The route table of the new customer's router.
- D. The arp table of a network user.

**Answer:** C

**NEW QUESTION 573**

- (Exam Topic 3)

A network administrator wants to monitor traffic by deploying MIBs. Which of the follow network monitoring resources would be used?

- A. SCTP

- B. Packet sniffer
- C. DCCP
- D. SNMP

**Answer:** D

#### NEW QUESTION 577

- (Exam Topic 3)

company wants the public to be able to connect to the wireless network with minimal security, but not be able to connect to the private internal network. Which of the following firewall rules would BEST accomplish this?

- A. Content filtering on the wireless access point
- B. Allow traffic from the wireless access point
- C. Block traffic from the wireless access point
- D. Packet filtering on the wireless access point

**Answer:** C

#### NEW QUESTION 582

- (Exam Topic 3)

Which of the follow creates a secure remote connection at the OSI network layer?

- A. L2TP
- B. SSL
- C. DTLS
- D. IPSec

**Answer:** D

#### NEW QUESTION 585

- (Exam Topic 3)

An 801.11g wireless access point was configured as follows:

- AP encryption forced to WPA2-AES mode only
- MAC address filtering enabled with the following MAC address in the allow list: 00-ab-29-da-c3-40 Which is true about the above configuration?

- A. Any 802.11b/g compatible client can connect to the wireless network if they support TKIP, the MAC address is 00-ab-29-da-c3-40, and the encryption key is known by the client.
- B. An 802.11a compatible client can connect to the wireless network only if its MAC address is 00- ab-29-da-c3-40 and the encryption key is known by the client.
- C. An 802.11n compatible client can connect to the wireless network only if its MAC address is 00- ab-29-da-c3-40 and the encryption key is known by the client.
- D. Any 802.11g compatible client can connect to the wireless network if the encryption key is known by the client.

**Answer:** C

#### NEW QUESTION 587

- (Exam Topic 3)

Which of the following media types can carry a standard Ethernet signal for network connectivity?

- A. USB
- B. PArallel
- C. Serial
- D. CAT6

**Answer:** D

#### NEW QUESTION 592

- (Exam Topic 3)

A network technician needs to install an additional access point to the company's wireless network. The network has two 802.11b access points. Which of the following channels should be used to allow the access point's coverage areas to overlap?

- A. 1, 6, 11
- B. 2, 5, 10
- C. 3, 13, 23
- D. 4, 8, 16

**Answer:** A

#### NEW QUESTION 596

- (Exam Topic 3)

The network optimization process used to allow reasonable use of data, voice, and video on the same network infrastructure is called:

- A. CARP
- B. QoS
- C. Traffic shaping.
- D. Fault tolerance.

**Answer:** B

**NEW QUESTION 598**

- (Exam Topic 3)

Which of the following could be used to estimate RTT across a router?

- A. Dig
- B. Traceroute
- C. Arp
- D. Uptime

**Answer:** B

**NEW QUESTION 601**

- (Exam Topic 3)

Lisa, a consultant, is inspecting an office that reports frequent wireless issues. Upon scanning the network broadcasting in the vicinity of the office, seven SSIDs are found. The company's Wi-Fi network and three others all share channel six. Which of the following is MOST likely causing the issue?

- A. Frequency interference
- B. Low signal strength
- C. Standard mismatch
- D. Incorrect channel

**Answer:** A

**NEW QUESTION 606**

- (Exam Topic 3)

Kim, a network administrator, should consult which documentation sources FIRST to determine the cause of recent network issues?

- A. Network map
- B. Cable management
- C. Change management
- D. Asset management

**Answer:** C

**NEW QUESTION 609**

- (Exam Topic 3)

A company decides to deploy customer-facing, touch-scan kiosks. The kiosks appear to have several open service ports that could potentially become compromised. Which of the following is the MOST effective way to protect the kiosks?

- A. Install an IDS to monitor all traffic to and from the kiosks.
- B. Install honeypots on the network to detect and analyze potential kiosk attacks before they occur.
- C. Enable switchport security on the ports to which the kiosks are connected to prevent network –level attacks.
- D. Create a new network segment with ACLs, limiting kiosks' traffic with the internal network.

**Answer:** D

**NEW QUESTION 612**

- (Exam Topic 3)

Which of the following protocols is used for remote management of devices?

- A. SNMP
- B. TFTP
- C. Syslog
- D. SMTP

**Answer:** A

**NEW QUESTION 615**

- (Exam Topic 3)

Which of the following needs to be configured on a switch to use a packet sniffer?

- A. Port trunking
- B. Port mirroring
- C. Tagged VLAN
- D. Untagged VLAN

**Answer:** B

**NEW QUESTION 620**

- (Exam Topic 3)

A network technician is trying to terminate CAT5 modular jacks. Which of the following tools would be MOST appropriate for this scenario?

- A. Crimper
- B. OTDR
- C. Throughput tester
- D. Punch down tool

**Answer:** D

**NEW QUESTION 622**

- (Exam Topic 3)

Which of the following is used to create a secure connection between a client and a host?

- A. VLAN
- B. Proxy server
- C. IIS server
- D. VPN

**Answer:** D

**NEW QUESTION 624**

- (Exam Topic 3)

Which of the following diagnostic commands relies on proper forwarding of ICMP ECHO packets?

- A. ipconfig
- B. ping
- C. route
- D. nbstat

**Answer:** B

**NEW QUESTION 629**

- (Exam Topic 3)

A network technician configures a firewall to block only certain IP addresses from accessing the Internet. All users are reporting that they are unable to access the Internet.

Which of the following is the MOST likely reason?

- A. Incorrectly configured ACL
- B. Implicit allow statement
- C. SMTP requests are being denied
- D. All protocols are being allowed in

**Answer:** A

**NEW QUESTION 634**

- (Exam Topic 3)

The software in a virtualized environment that controls resource allocation and allows multiple operating system guests to run on the same physical platform is known as the:

- A. hypervisor.
- B. LPAR.
- C. broker.
- D. VDI.

**Answer:** A

**NEW QUESTION 636**

- (Exam Topic 3)

An administrator is troubleshooting analog telephony issues on the punch down block. Which of the following tools would be MOST useful in this scenario?

- A. T1 loopback
- B. Butt set
- C. Multimeter
- D. Protocol analyzer

**Answer:** B

**NEW QUESTION 638**

- (Exam Topic 3)

Kim, a network administrator, is seeing workstations in building C authenticate to the building A wireless access point. Which of the following would resolve this issue?

- A. Change the security method
- B. Reduce the transmission power
- C. Change the SSID
- D. Change the frequency

**Answer:** B

**NEW QUESTION 643**

- (Exam Topic 3)

Which of the following technologies allows for redundant links within a Layer 2 segment?

- A. OSPF
- B. RIP
- C. Port Mirroring
- D. Spanning Tree

**Answer:** D

#### NEW QUESTION 648

- (Exam Topic 3)

Lisa, a technician, has configured a new switch that is remotely accessed using SSH. The switch is working properly but cannot be accessed remotely. Which of the following items is MOST likely missing in the configuration?

- A. Port speed
- B. Cryptokey
- C. Data VLAN
- D. NAT/PAT

**Answer:** B

#### NEW QUESTION 653

- (Exam Topic 3)

Jeff, a user, is having a problem with a POTS line. Which of the following tools would Jeff use to make sure the phone lines have a dial tone?

- A. Loopback plugs
- B. Butt set
- C. Cable certifier
- D. Toner probe

**Answer:** B

#### NEW QUESTION 654

- (Exam Topic 3)

A mobile user is no longer able to access network resources. Jeff, the network technician, is unable to ping the user's workstation. Which of the following commands would MOST likely be used on that workstation to verify its current network settings?

- A. net share
- B. hostname
- C. ipconfig
- D. tracert

**Answer:** C

#### NEW QUESTION 656

- (Exam Topic 3)

Which of the following separates broadcast domains?

- A. Port mirroring
- B. Router
- C. Convergence
- D. Switch

**Answer:** B

#### NEW QUESTION 659

- (Exam Topic 3)

A technician needs to limit the amount of broadcast traffic on a network and allow different segments to communicate with each other. Which of the following options would satisfy these requirements?

- A. Add a router and enable OSPF.
- B. Add a layer 3 switch and create a VLAN.
- C. Add a bridge between two switches.
- D. Add a firewall and implement proper ACL.

**Answer:** B

#### Explanation:

We can limit the amount of broadcast traffic on a switched network by dividing the computers into logical network segments called VLANs.

A virtual local area network (VLAN) is a logical group of computers that appear to be on the same LAN even if they are on separate IP subnets. These logical subnets are configured in the network switches. Each VLAN is a broadcast domain meaning that only computers within the same VLAN will receive broadcast traffic.

To allow different segments (VLAN) to communicate with each other, a router is required to establish a connection between the systems. We can use a network router to route between the VLANs or we can use a 'Layer 3' switch. Unlike layer 2 switches that can only read the contents of the data-link layer protocol header in the packets they process, layer 3 switches can read the (IP) addresses in the network layer protocol header as well.

#### NEW QUESTION 662

- (Exam Topic 3)

ADSL modem connects to the provider's network using which of the following authentication techniques?

- A. PoE
- B. MS-CHAP
- C. PPPoE
- D. EAP

**Answer: C**

**NEW QUESTION 667**

- (Exam Topic 3)

A company is having a new T1 line installed. Which of the following will the connection MOST likely terminate to?

- A. Core switch
- B. MDF
- C. Ethernet router
- D. IDF

**Answer: B**

**NEW QUESTION 669**

- (Exam Topic 3)

Which of the following is the prefix for a link-local IPv6 address?

- A. FE80::/10
- B. FF00::/8
- C. 2FFE::/16
- D. FEEF:/12

**Answer: A**

**NEW QUESTION 673**

.....

## Thank You for Trying Our Product

\* 100% Pass or Money Back

All our products come with a 90-day Money Back Guarantee.

\* One year free update

You can enjoy free update one year. 24x7 online support.

\* Trusted by Millions

We currently serve more than 30,000,000 customers.

\* Shop Securely

All transactions are protected by VeriSign!

**100% Pass Your N10-007 Exam with Our Prep Materials Via below:**

<https://www.certleader.com/N10-007-dumps.html>