

# Exam Questions 352-001

CCDE Written Exam

<https://www.2passeasy.com/dumps/352-001/>



#### NEW QUESTION 1

Which load balancing option for IP-only traffic is the least efficient in terms of EtherChannel physical links utilization?

- A. On a per source IP address basis
- B. On a per destination MAC address basis
- C. On a per destination IP address basis
- D. On a per port number basis

**Answer:** B

#### NEW QUESTION 2

Which three options are important design functions of IPv6 first-hop security? (Choose three)

- A. It prevents rogue DHCP servers from assigning IPv6 addresses.
- B. It prevents IPv6 packets fragmentation.
- C. It limits IPv6 route advertisement in the network.
- D. It implements a broadcast-control mechanism.
- E. It suppresses excessive multicast neighbor discovery.
- F. It implements multihoming security.

**Answer:** ACE

#### NEW QUESTION 3

You have been asked to design a wireless network solution that will implement context-aware services on an existing network that was initially deployed for data traffic only. Which two design principles would you follow to increase the location accuracy with the least possible impact on the current setup? (Choose two.)

- A. Use directional antennas to provide better cell separation.
- B. Add access points along the perimeter of the coverage area.
- C. Install additional APs in monitor mode where the co-channel interference would otherwise be affected.
- D. Increase the AP density to create an average inter-access point distance of less than 40 ft. | 12.2 meters
- E. Fine tune the access point's radio configuration to have a higher average transmission power to achieve better coverage.

**Answer:** AD

#### NEW QUESTION 4

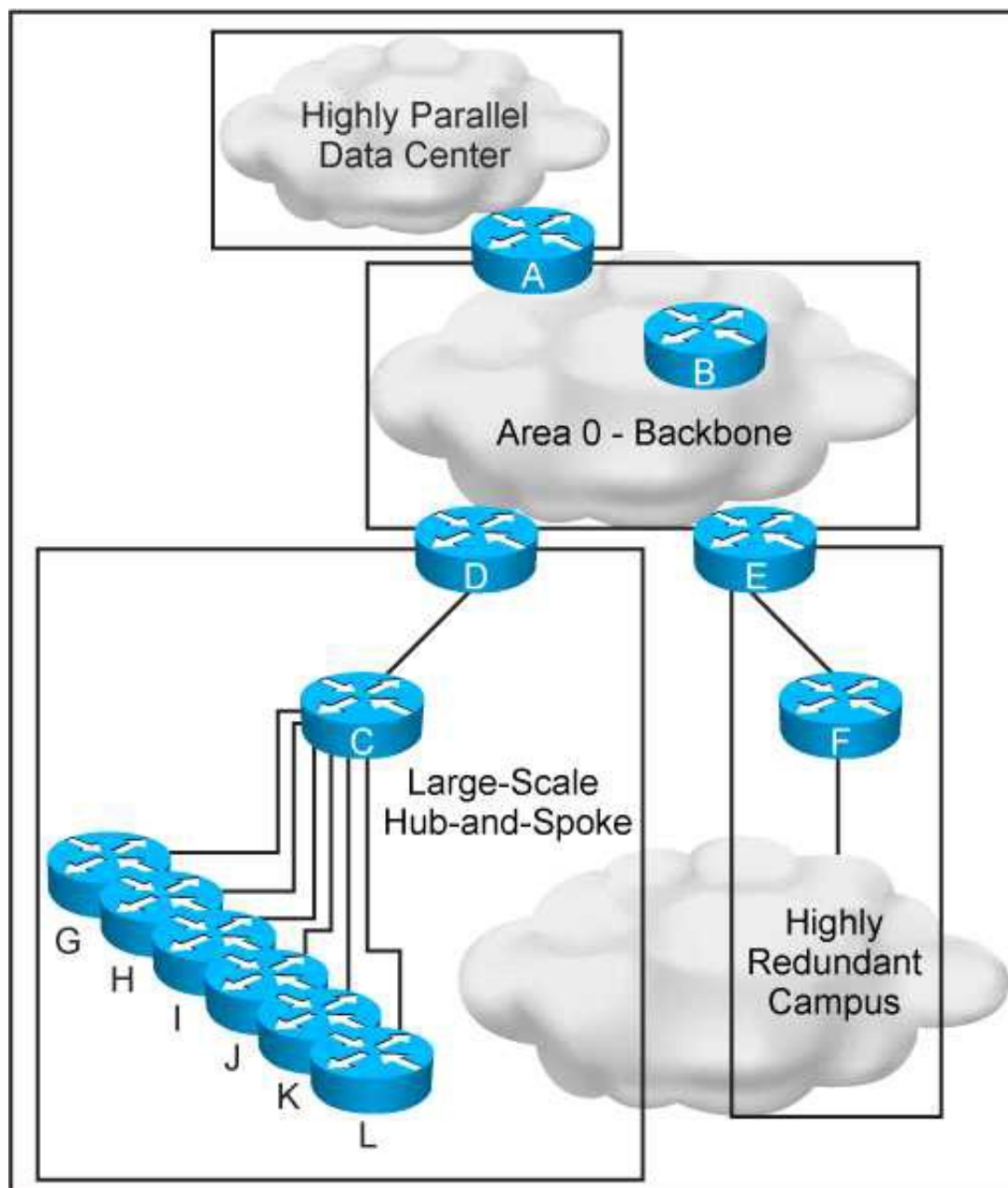
Which major block is not included in the ETSI network Function Virtualization reference framework?

- A. Network Function Virtualization Infrastructure
- B. Network Function Virtualization Management and Orchestration
- C. Network Function Virtualization Policy Manager
- D. Virtualized Network Function/ Element Management Systems

**Answer:** C

#### NEW QUESTION 5

Refer to the exhibit.



This new OSPF network has four areas, but the hub-and-spoke area experiences frequent flapping. In order to fix this design failure, which two mechanisms can you use to isolate the data center area from the hub-and-spoke area without losing Ip connectivity? (Choose two)

- A. Use OSPF distribute-list filtering on router A
- B. Deploy a prefix summarization on router D
- C. Make the data center area a NSSA
- D. Make the data center area totally stub
- E. Convert the data center area to EIGRP protocol

**Answer:** BD

#### NEW QUESTION 6

Which IEEE standard is commonly used at the data link layer for an access network, in an IoT environment?

- A. Wireless Regional Area Network
- B. Low-Rate Wireless Network
- C. Wireless Local Area Network
- D. Broadband wireless metropolitan Network

**Answer:** B

#### NEW QUESTION 7

Which feature or technology that affects the operations of IPsec should be taken into account when designing an IPsec network using Authentication header?

- A. TCP MSS adjustment
- B. Certificate-based authentication
- C. Transform set
- D. NAT

**Answer:** D

#### NEW QUESTION 8

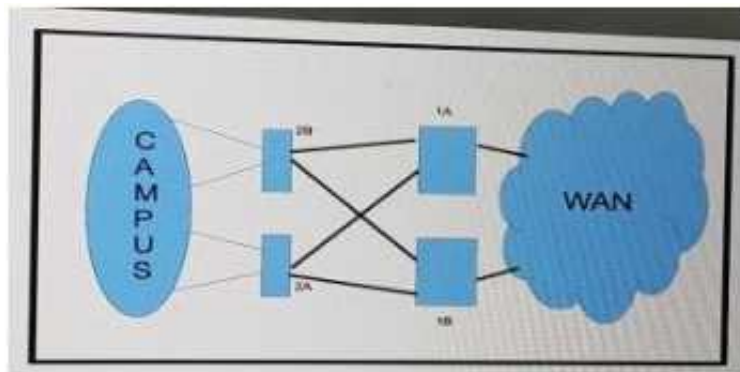
Which option lists the cloud service models?

- A. Internet as a Service, Platform as a Service, and Storage as a Service.
- B. Infrastructure as a Service, Platform as a Service, and Storage as a Service.
- C. Infrastructure as a Service, Platform as a Service, and Software as a Service.
- D. Internet as a Service, Product as a Service, and Storage as a Service.
- E. Internet as a Service, Platform as a Service, and Software as a Service.

**Answer:** C

#### NEW QUESTION 9

Refer to the exhibit.



How should you redesign this network running BGP to improve availability of the routers 1A and 1B at the core site?

- A. Deploy BGP PIC
- B. Use link bundles over multiple slots
- C. Enable graceful restart
- D. Create a multichassis system with the two routers

**Answer: A**

#### NEW QUESTION 10

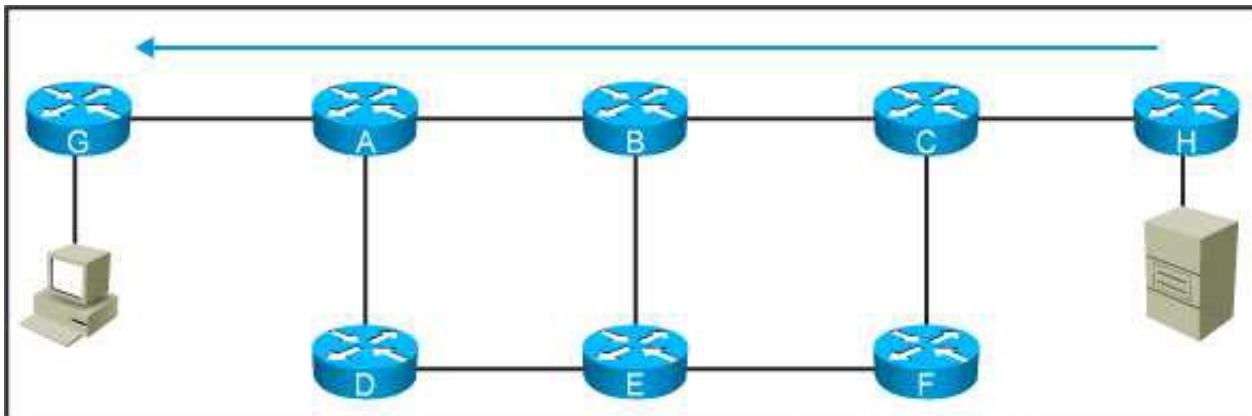
Which statement about TAP and TUN devices, which are used in a Linux/KVM cloud deployment model, is true?

- A. TUN is for handling IP packets, but TAP is for handling Ethernet frames
- B. TUN is for handling Ethernet frames, but TAP is for handling IP packets
- C. TUN is for tunneling IP packets, but TAP is for tapping IP packets
- D. TUN is for tunneling Ethernet frames, but TAP is for tapping Ethernet frames

**Answer: A**

#### NEW QUESTION 10

Refer to the exhibit.



This network is running IS-IS as the single routing protocol and the LSP and SPF timers are aggressively configured so the network converges in subsecond. The customer reports that router B had a memory crash and reloaded. Which resulted in some packets from the application being lost. The application servers are behind router G and the end users are behind router H, which design change should be made to prevent this packet-loss problem from reoccurring?

- A. Use asymmetric carrier delay timer
- B. Deploy all links as point-to-point
- C. Redesign the network as a flat level 2
- D. Optimize the LSP/SPF timers to send LSPs immediately after a topology change
- E. Enable the advertisement of the overload bit for a specific amount of time after reload on router B

**Answer: E**

#### NEW QUESTION 13

In which two ways is a network design improved by including IP Event Dampening? (Choose two)

- A. Provides sub-second convergence
- B. Quickly detects network failures
- C. Prevent routing loops
- D. Improves network stability
- E. Reduces processing load

**Answer: DE**

#### NEW QUESTION 15

Which reason prevents a designer from using a GDOI-based VPN to secure traffic that traverses the Internet?

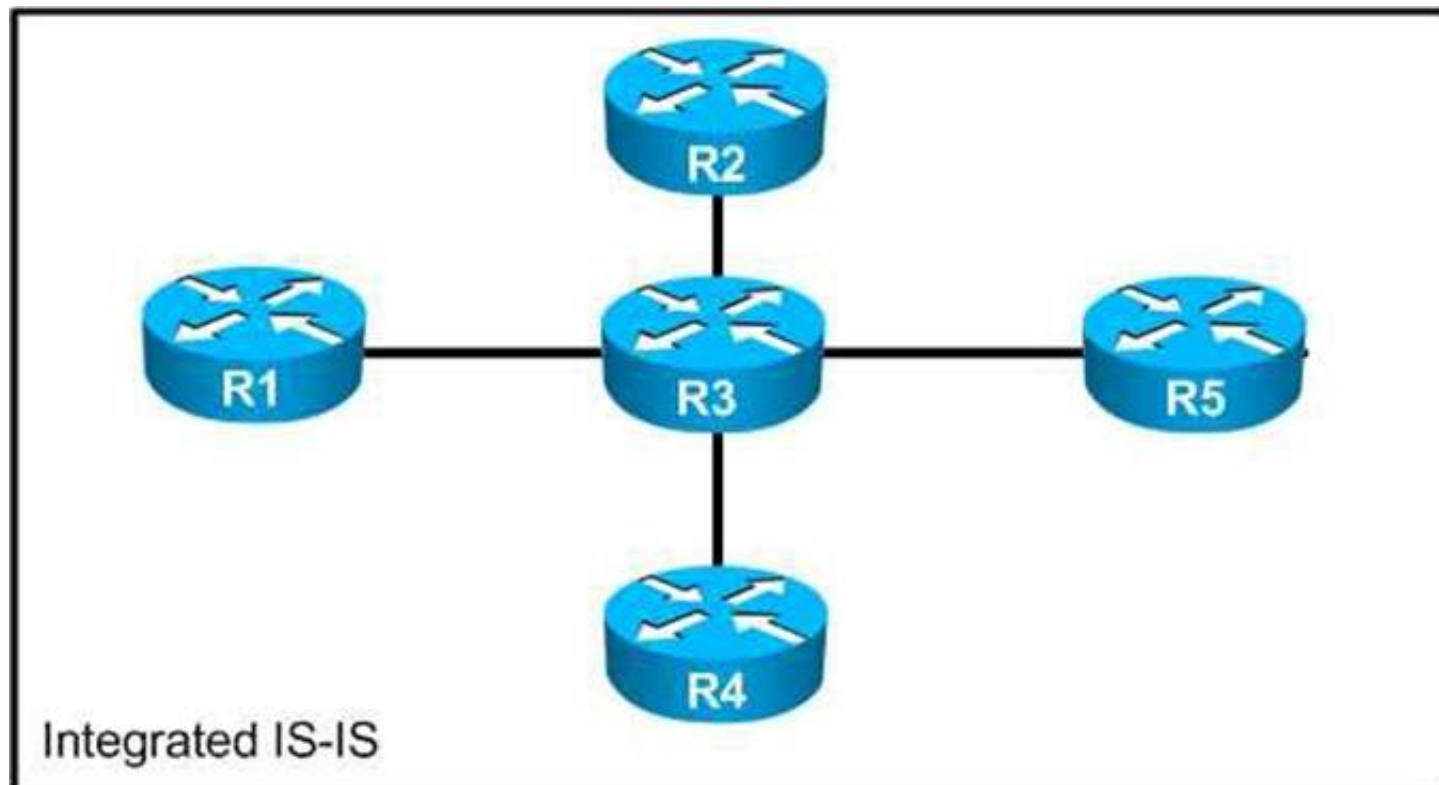
- A. Enterprise host IP addresses are typically not routable.
- B. GDOI is less secure than traditional IPsec.
- C. Network address translation functions interfere with tunnel header preservation.

D. The use of public addresses is not supported with GDOI.

**Answer: C**

#### NEW QUESTION 16

Refer the exhibit.



You have designed a IPv6 migration plan, and now you need to determine the impact on the existing IPv4 network. Which is likely to happen when you enable IPv6 routing on the link between R3 and R2, starting at R3?

- A. R3 advertises the link from R3-R2 to R1, R4 and R5 only.
- B. R2 receives an IPv6 default route from R3.
- C. Only R3 and R2 have IPv4 and IPv6 reachability.
- D. Loopback reachability between all routers for IPv4 is lost.
- E. All routers except R2 are reachable through IPv4.

**Answer: D**

#### NEW QUESTION 17

An operations engineer asks for your help with a new switching deployment. The engineer confirms that STP is enabled on an edge switch, and a particular port is connected to another switch. The switch is not receiving configuration BPDUs, although it appears that everything is functioning correctly in the network. What is the design explanation?

- A. Bridge Assurance is enabled on the port
- B. Storm control broadcast is enabled on the port
- C. REP is enabled on the port
- D. BPDU Guard is enabled on the port

**Answer: C**

#### NEW QUESTION 18

Which option is a design consideration when using routers in a distributed hardware architecture?

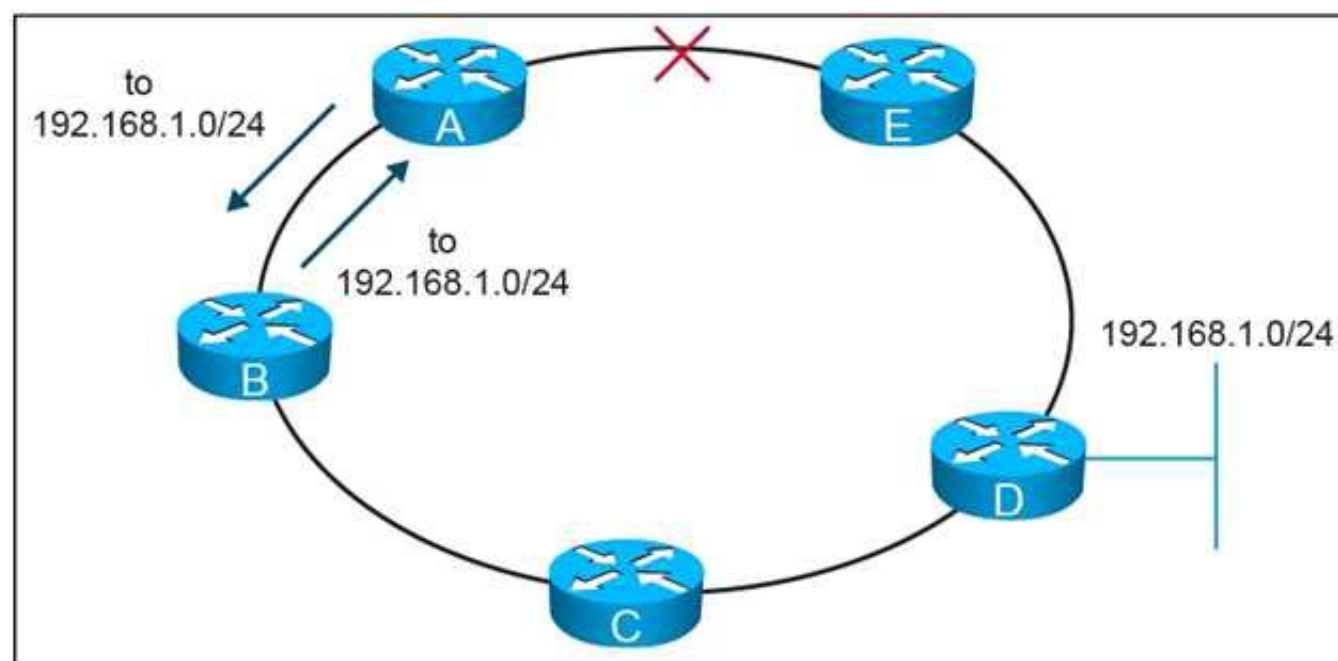
- A. Routing information is stored in the RIB and the FIB makes forwarding decisions as programmed on the line card hardware
- B. After a link failure occurs in the core, the RIB continues to forward the traffic while FIB convergence is in progress
- C. BGP routes are stored in the RIB and IGP routes are stored in the FIB
- D. IP routes are stored in the RIB and MPLS labels are stored in the FIB

**Answer: A**

#### NEW QUESTION 20

Refer to the exhibit.





On this MPLS-based network ring, links have failed between router A and router E. These failures formed microloops while the network converged, when A forwarded traffic to B but B forwards it back to

- A. Which technology is the simplest solution to avoid microloops without enabling a new protocol in the network?
- B. TE Fast ReRoute
- C. IP Fast ReRoute
- D. Loop-Free Alternate
- E. Remote Loop-Free Alternate

**Answer:** D

#### NEW QUESTION 21

Which two techniques are used in an OSPF network design to slow down the distribution of topology information caused by a rapidly flapping link? (Choose two)

- A. LSA throttling
- B. SPF throttling
- C. IP event dampening
- D. Link-state incremental SPF
- E. Link-state partial SPF

**Answer:** AC

#### NEW QUESTION 24

Which mechanism provides fast path failure detection?

- A. Non-Stop Forwarding
- B. Carrier delay
- C. Graceful restart
- D. UDLD
- E. Fast hello packets
- F. iSPF

**Answer:** E

#### NEW QUESTION 25

Which technology, implemented on aggregation –edge nodes at the aggregation layer, provides per –tenant isolation at Layer 3, with separate dedicated per-tenant routing and forwarding tables on the inside interfaces of firewall contexts?

- A. VDC
- B. VLAN
- C. VXLAN
- D. VRF-lite

**Answer:** D

#### NEW QUESTION 28

There is an MPLS-enabled link constantly flapping on an MPLS VPN network. Given that the network runs OSPF as the IGP protocol, which design mechanism will stabilize the network and avoid constant re-convergence?

- A. IP Event Dampening
- B. OSPF fast hellos
- C. IP SLA
- D. Partial SPF

**Answer:** A

#### NEW QUESTION 29

A very large enterprise customer is migrating from EIGRP to IS-IS .What is your main concern in regards to change in the path packets take after the migration is complete?

- A. The areas sizes.
- B. The number of prefixes
- C. The redistribution points.
- D. The bandwidth and metrics of the links.

**Answer:** D

#### NEW QUESTION 32

A large enterprise network running IS-IS wants to deploy IGP traffic engineering, but they are concerned that the IS-IS default metrics are not flexible enough. Which feature must be enabled to provide traffic engineering with the minimum amount of changes?

- A. IS-IS Narrow Metrics
- B. IS-IS DIS
- C. IS-IS Wide Metrics
- D. IS-IS Multitopology

**Answer:** C

#### NEW QUESTION 33

You are implementing a one-to-many multicast solution for a large service provider network. Which technology offers optimal routing of multicast traffic?

- A. PIM sparse mode
- B. PIM SSM
- C. Anycast RP
- D. MSDP
- E. Bidirectional PIM.

**Answer:** B

#### NEW QUESTION 37

What is the definition of TOGAF framework?

- A. A framework for enterprise IP address management (IPAM) based on the IANA trusted IP lease allocation scheme.
- B. A series of tools for process improvement that uses statistical method to reduce defect in process and manufacturing.
- C. A framework for enterprise architecture that provides a comprehensive approach for designing planning implementing and governing enterprise information architecture.
- D. A five-volume framework for service management that covers design transition and delivery of service and from which the ISO 20000 was developed.
- E. An ISO framework that establishes a module for network management and contains guidelines for managing object the management database and the application entity.

**Answer:** C

#### NEW QUESTION 40

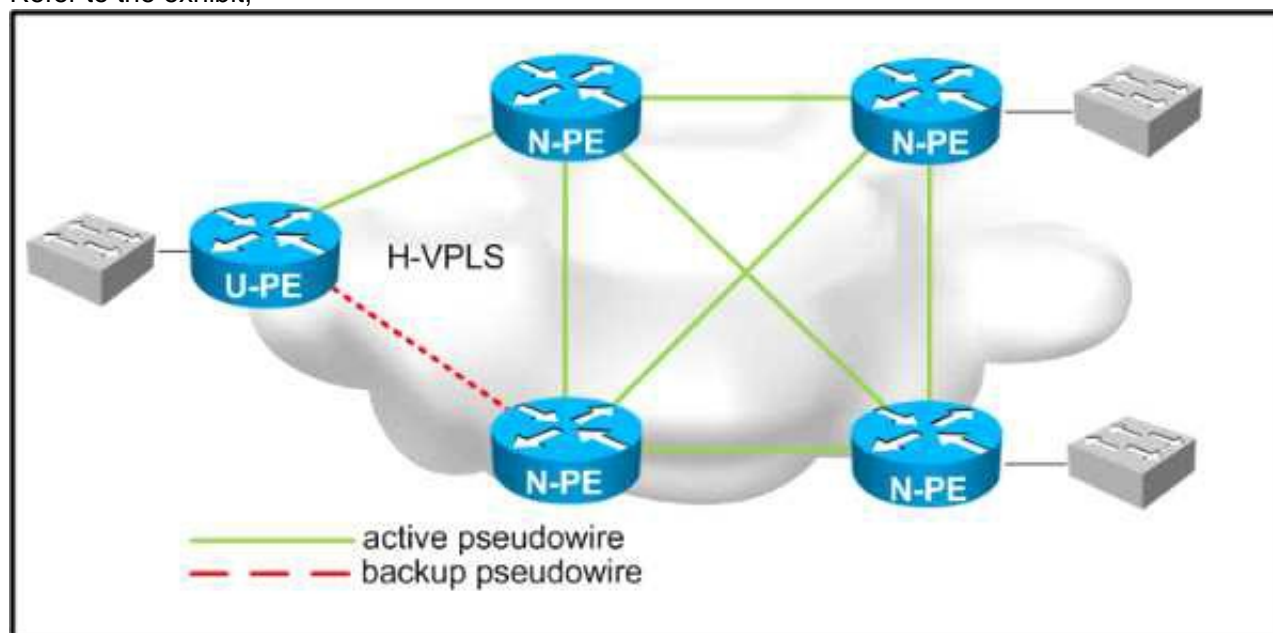
A network designer wants to improve a company network design due to multiple network crashes. Which technology would allow for the restore of a network connection without informing the Layer 3 protocol?

- A. Bidirectional Forwarding Detection
- B. automatic protection switching
- C. UDLD
- D. Ethernet OAM

**Answer:** B

#### NEW QUESTION 42

Refer to the exhibit,



Which two design considerations should be implemented on the pseudowire between N-PE and U-PE routers for a loop-free hierarchical VPLS service? (Choose two)

- A. Disable split horizon towards the U-PE router.
- B. Disable MAC learning on the U-PE router.
- C. Enable split horizon towards the N-PE routers.
- D. Disable MAC learning on the U-PE routers.
- E. Disable MAC learning on the U-PE routers.
- F. Enable split horizon towards the U-PE routers.
- G. Disable split horizon toward the N-PE routers.

**Answer:** AC

#### NEW QUESTION 44

You are designing a WAN network solution with EIGRP based on VPLS. The interface speed is 10Mb/s, but the access rate of the WAN connection is 256 Kb/s. What should you include in the network design, in order to avoid potential issues with EIGRP?

- A. Limit EIGRP traffic to the access rate with a policer.
- B. Tag outbound EIGRP traffic and have the WAN provider add it to the priority queue.
- C. Limit traffic to the access rate with interface traffic shaping.
- D. Set the interface bandwidth to match the access rate.

**Answer:** D

#### NEW QUESTION 48

An ISP provides VoIP and internet services to its customers. For security reasons, these services must be transported in different MPLS Layer 3 VPNs over the ISP core network. The customer CEs do not have the ability to segment the services using different VLANs and have only one uplink interface that does not support VLAN tagging. How should you design the network to ensure that VoIP traffic that is received from the CE goes in the VoIP VPN, and that Internet traffic goes into the Internet VPN on the ISP PE devices?

- A. Use a secondary interface IP address to differentiate between VoIP and Internet traffic
- B. Extend the Layer 3 VPN toward the CE
- C. Enable NBAR on the PE to direct the traffic into the correct VRF
- D. Use a subinterface on the PE for each service, VoIP and Internet, with different subnets
- E. Use policy-based routing to direct traffic into the correct VRF

**Answer:** E

#### NEW QUESTION 51

How can a network designer reduce the amount of LSA flooding occurring in a large, single area fully-meshed OSPF topology?

- A. Implemented passive OSPF interfaces on the routers not participating on the DR/BDR election.
- B. Use access control lists to control outbound advertisements.
- C. Ensure DR and BDR routers are placed optimally in the topology.
- D. Place all point-to-point links in their own dedicated areas.

**Answer:** C

#### NEW QUESTION 53

Which two design aspects should a metro service provider consider when planning to deploy REP for his backbone? (Choose two.)

- A. Two REP segments can be connected redundantly at two points, one connection will be blocked as per the STP defined in IEEE 802.1d.
- B. UDLD can be enabled on REP interfaces to detect unidirectional failures.
- C. The guaranteed convergence recovery time is less than 50 ms for the local segment.
- D. A REP segment is limited to a maximum of seven devices.
- E. VLAN load balancing for optimal bandwidth usage is supported in any REP segment.

**Answer:** BE

#### NEW QUESTION 58

A company would like to distribute a virtual machine (VM) hosting cluster between three data centers with the capability to move VMs between sites. The connectivity between data centers is IP only and the new design should use the existing WAN. Which Layer 2 tunneling technology do you recommend?

- A. AToM
- B. L2TPv3
- C. OTV
- D. VPLS

**Answer:** C

#### NEW QUESTION 60

You are designing the QoS features for a large enterprise network that includes DMVPN. In which situation should you use the QoS pre-classify feature?

- A. When you are marking packets with the ToS bits



- B. When the QoS policy cannot be based on DSCP bits
- C. When you are marking packets with the DSCP bits
- D. When your service provider requires the DSCP bits be set

**Answer:** B

#### NEW QUESTION 62

Which multicast technology provides a large, many-to-many connectivity for a new application while minimizing load on the existing network infrastructure?

- A. PIM Sparse Mode
- B. Bidirectional PIM
- C. Any-Source Multicast
- D. Source Specific Multicast

**Answer:** B

#### NEW QUESTION 64

A Company has these requirements for access to their wireless and wired corporate LANs using 802.1x Clients devices that corporate assets and have joined the active directory domain are allowed access Personal devices must be not allowed access Clients and access servers must be mutually authenticated. Which solution meets these requirements?

- A. Protected EAP/Microsoft CHAP v2 with user authentication
- B. EAP-TLS with machine authentication
- C. EAP-TLS with user authentication
- D. Protected EAP/Microsoft CHAP v2 with Machine authentication

**Answer:** B

#### NEW QUESTION 65

You are consultant network designer for a large GET VPN deployment for a large bank with International coverage. Between 1800 and 2000 remote locations connect to the central location through four hubs using an MPLS backbone and using two keys servers. The bank is concerned with security and replay attacks. Which two actions should you use to tune the GET VPN to meet the bank requirements? (Choose two)

- A. Increase the cryptographic key size.
- B. Replace unicast rekey with multicast rekey.
- C. Reduce the SAR clock interval duration
- D. Increase the TEK and KEK lifetime.
- E. Reduce the Dead Peer Detection periodic timer.

**Answer:** BC

#### NEW QUESTION 67

What is a correct design consideration of IPv6 MLD snooping?

- A. MLD snooping conserves bandwidth on switches.
- B. MLD snooping is used to filter all MLD queries.
- C. MLD snooping requires IGMP snooping to be implemented.
- D. MLD snooping conserves CPU by sharing IPv4 and IPv6 multicast topology.

**Answer:** A

#### NEW QUESTION 70

In an OSPF network, users in a particular OSPF non-backbone area are complaining about slow access speeds to a shared corporate resource in another OSPF area. Traceroutes show that the users are taking a suboptimal default route to the destinations. Which solution will improve access speed?

- A. Make the area totally stubby so that the default can be followed along the best path
- B. Create a virtual link between the areas so that traffic can shortcut directly between them
- C. Leak specific summaries on the ABRs for the remote subnets in addition to the default
- D. Implement policy routing to channel the traffic in the optimal direction

**Answer:** C

#### NEW QUESTION 73

You are solving a design failure on a massive Hadoop cluster network that has an application with TCP incast behavior (also known as TCP Throughput collapse) affecting its many-to-one communications with packet loss at the last-hop network device. Which metric must be measured to ensure that the network provides the best performance for this application?

- A. Availability
- B. Bandwidth utilization
- C. Jitter values
- D. Buffer utilization

**Answer:** D

#### NEW QUESTION 75

You are designing a data center migration from one location to another, which requires all existing VLANs spanned to the new data center to maintain host IP addressing. Two temporary Gigabit Ethernet circuits are available to extend the VLANs at Layer 2 to the location as trunk links between core switches in each location. Which solution provides maximum fault isolation between the two data centers to ensure a Layer 2 issue in one data center does not affect the other during the migration?

- A. Perform BPDU filtering over the trunk links
- B. Enable STP PortFast on host ports within each data center
- C. Run the dual links as multichassis Etherchannel trunk between core switches within each location
- D. Perform HSRP filtering over the trunk links to maintain active HSRP gateways within each data center for each VLAN

**Answer:** A

#### NEW QUESTION 76

A BGP route reflector in the network is taking longer than expected to converge during network changes. Troubleshooting has shown that the router cannot handle all the TCP acknowledgements during route updates. Which action can be performed to tune device performance?

- A. Increase the size of the large buffers
- B. Decrease the size of the small buffers
- C. Increase the keepalive timers for each BGP neighbor
- D. Increase the size of the hold queue

**Answer:** D

#### NEW QUESTION 80

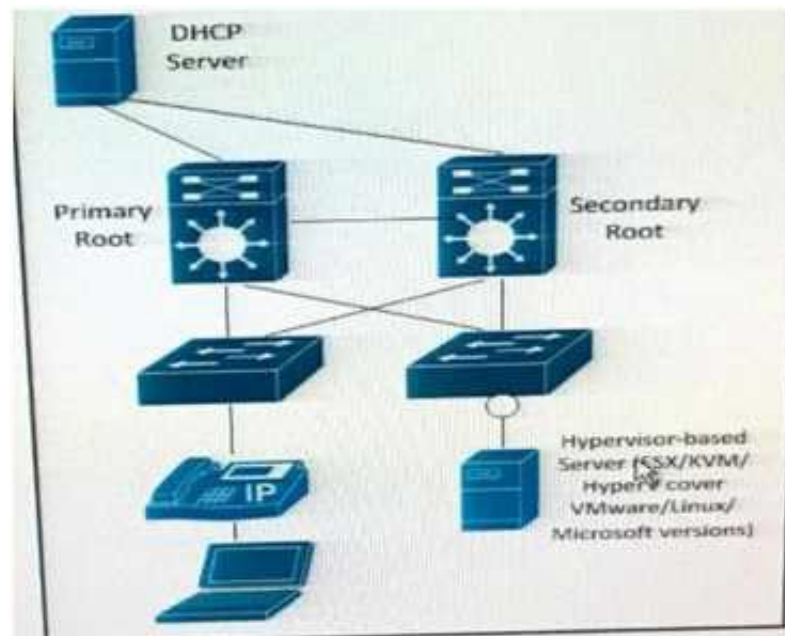
Which two general SDN characteristics? (Choose two)

- A. Southbound interfaces are interfaces used between the control plane and the data plane
- B. OpenFlow is considered one of the first Northbound APIs used by SDN controllers
- C. Northbound interfaces are open interfaces used between the control plane and the data plane
- D. The separation of the control plane from the data plane
- E. OVSDB is an application database management protocol

**Answer:** AD

#### NEW QUESTION 83

Refer to the Exhibit.



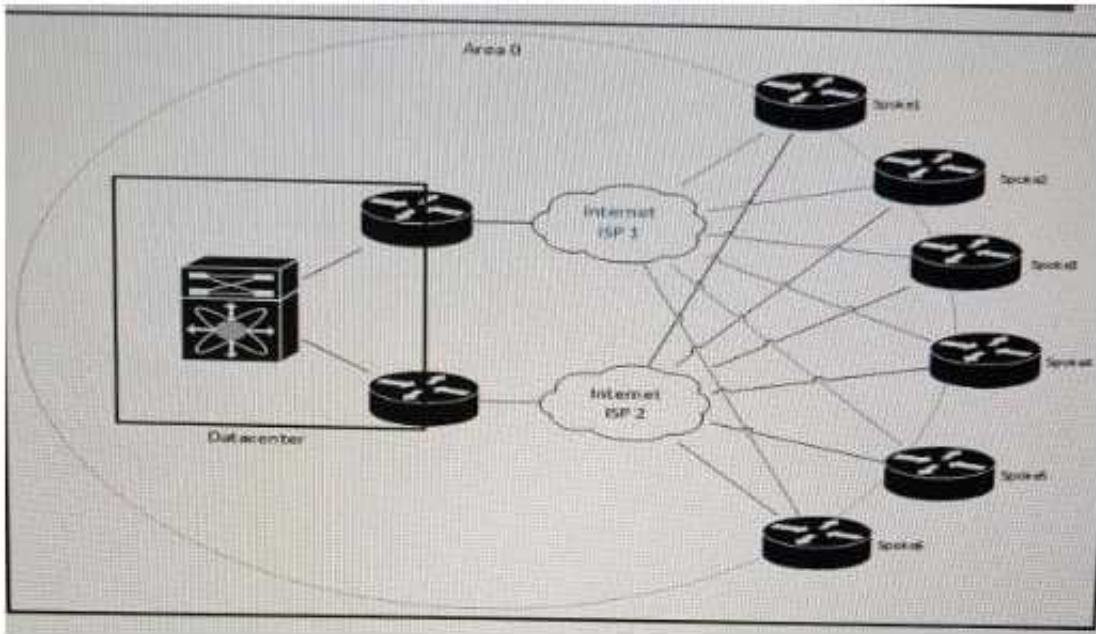
The server is running multiple VLANs on its NIC. Which two Layer 2 features should be applied to the network location identified by a circle? (Choose two)

- A. UDLD
- B. BPDU guard
- C. BPDU filtering
- D. Port Fast
- E. Loop guard
- F. PortFast trunk

**Answer:** BF

#### NEW QUESTION 87

Refer to the exhibit.



You must review this single OSPF area, DMVPN network because the company has noticed a few area 0 convergence and stability issues. Also, traffic destined to the data center from one of the spokes as the next hop on the path. The company prefers that all traffic destined to the data center uses the least amount of hops. Which solution resolves these issues with the minimum amount of changes on the network?

- A. Migrate from OSPF to static routes between the hub routers and the spoke routers and deploy IP SLA for route health checks
- B. Migrate from OSPF to EIGRP between the hub routers and the spoke routers
- C. Modify OSPF cost metrics on all backup links
- D. Create areas between each hub and their spoke routers, to ensure that the hub routers become DRs

**Answer: C**

#### NEW QUESTION 92

Which three network management requirements are common practices in network design? (Choose three)

- A. Ensure that all network devices have their clocks synchronized.
- B. Collect SNMP poll information for future regression analysis.
- C. Capture both ingress and egress flow-based packets, while avoiding duplication of flows.
- D. Look at average counters instead of instantaneous counters for inconsistent and bursty KPIs, such as CPU utilization and interface utilization.
- E. Validate data plane health, and application and services availability, with synthetic traffic.

**Answer: ABD**

#### NEW QUESTION 97

Which two options are considered risks or concerns when both the Internet and VPN service functions are on the same PE router? (Choose two.)

- A. Internet-based attacks can affect VPN customers.
- B. BGP cannot simultaneously run on the PE router that runs MPLS.
- C. MP-BGP prefixes increase routers' global routing tables, which affects network convergence.
- D. Failure on the PE router affects both VPN and Internet services.
- E. Customer performance can be affected by VPN traffic if Internet-based traffic is not prioritized on the PE

**Answer: AD**

#### NEW QUESTION 100

You are designing a solution to connect a primary data center to a disaster recovery site, The hosted applications will be web and email servers that are provided through a virtualized environment. Which connectivity technology should you consider for this design?

- A. L2TPV3.
- B. VPWS.
- C. Point-To-Point GRE tunnels.
- D. VPLS.

**Answer: A**

#### NEW QUESTION 102

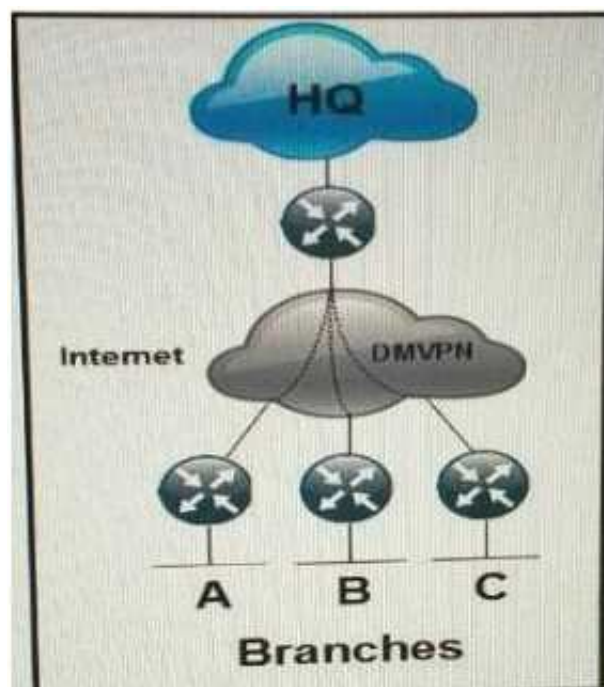
You are asked to design an RSVP-TEL LSP protection solution for a large service provider network .Which traffic protection mechanism is highly scalable and ensure that multiple LPS always terminate at the same merge point?

- A. Shared explicit protection.
- B. Detour LSPs.
- C. 1:N protection.
- D. 1:1 protection.

**Answer: C**

#### NEW QUESTION 105

Refer to the exhibit.



Which routing solution is the most scalable to connect the branches to the HQ and to connect the branches together over the internet using DMVPN?

- A. EIGRP
- B. EIGRP with the branch routers setup as stubs
- C. OSPF with each branch router as an ABR
- D. IS-IS L2 in all locations
- E. OSPF Area 0 in all locations

**Answer: B**

#### NEW QUESTION 106

A network is designed to use OSPF to reach eBGP peers. For eBGP peers to stay stable in case of a link failure, what condition should be avoided?

- A. Advertise IP addresses used on eBGP statements via a normal OSPF area
- B. Use an ACL to block BGP in one direction
- C. Disable BGP synchronization
- D. Advertise IP addresses used on eBGP peer statements via eBGP

**Answer: D**

#### NEW QUESTION 110

Which three processes are part of the ITILv3 Service Operation? (Choose three)

- A. Release and deployment management
- B. Problem management
- C. Incident management
- D. Event management
- E. Service-level management
- F. Change management

**Answer: BCD**

#### NEW QUESTION 111

What two options are significant drivers for 5G in IoT networks? (Choose two)

- A. Energy Efficiency
- B. Lower Latency
- C. Mass Connectivity
- D. Programmability
- E. Higher data rates

**Answer: BC**

#### NEW QUESTION 114

As a part of a network design, you should tighten security to prevent man-in-the-middle. Which two security options ensure that authorized ARP responses take place according to know IP-to-MAC address mapping? (Choose two)

- A. DHCP snooping
- B. ARP spoofing
- C. ARP rate limiting
- D. Dynamic ARP Inspection
- E. Port security

**Answer: AD**

#### NEW QUESTION 116

Which two options are potential problems with route aggregation? (Choose two)



- A. Maintaining host IP addresses during migrations
- B. Route flapping
- C. Suboptimal routing
- D. Topology hiding
- E. Asymmetric routing
- F. Prefix hijacking

**Answer:** CE

#### NEW QUESTION 121

A DMVPN network is being deployed for 10 branch sites to connect to the central headquarters over the Internet. Each branch site connects to the internet via a 1.5 Mb/s ADSL line, and the headquarters connects to the Internet over a 100Mb/s circuit limited to 20 Mb/s by the service provider. Which QoS mechanism if any, do you recommend at the headquarters location?

- A. Rate-limiting the 100 Mb/s circuit to 20 Mb/s
- B. Applying hierarchical QoS with parent policy for the overall circuit and child policy for the spokes
- C. Traffic shaping the 100 Mb/s circuit to 20 Mb/s
- D. QoS is not required in this instance due to maximum traffic being received by the branches being 15 Mb/s

**Answer:** B

#### NEW QUESTION 125

You are performing a BGP design review for a service provider that offers MPLS-based services to their end customers. The network is comprised of several PE routers that run iBGP with a pair of route reflectors for all BGP address families. Which two options about the use of Constrained Route Distribution for BGP/MPLS VPNs are true? (Choose two.)

- A. The RRs do not need to advertise any route target filter toward the PE routers
- B. The RR must advertise the default route target filter toward the PE routers
- C. Both PE and RR routers must support this feature
- D. This feature must be enabled on all devices in the network at the same time
- E. Route distinguishers are used to constrain routing updates

**Answer:** BC

#### NEW QUESTION 127

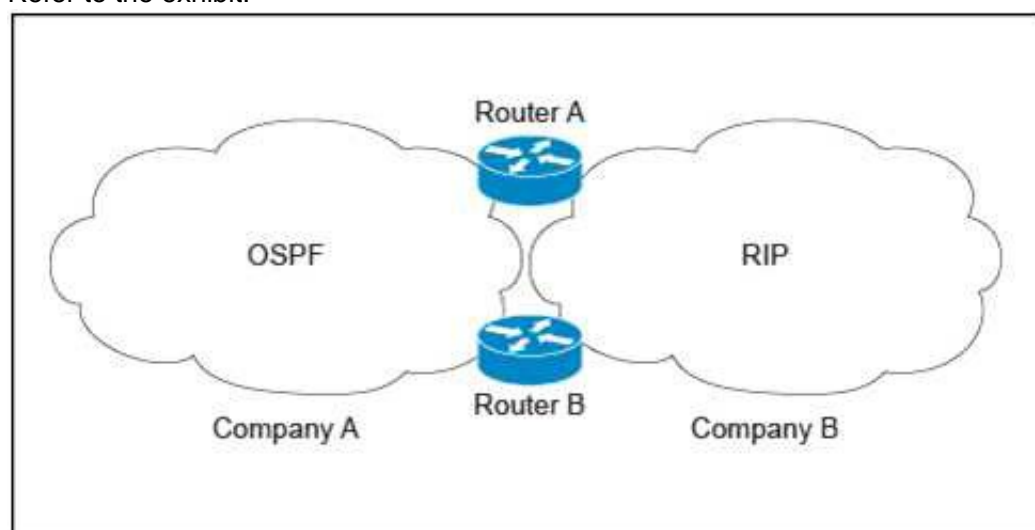
As network designer, which option is your main concern with regards to virtualizing multiple network zones into a single hardware device?

- A. Fate sharing
- B. CPU resource allocation
- C. Congestion control
- D. Security
- E. Bandwidth allocation

**Answer:** A

#### NEW QUESTION 130

Refer to the exhibit.



Company A is running a single-area OSPF, and Company B is running RIP as the IGP with no overlapping IP address spaces. Company A has just acquired Company B and both networks must be merged. Which three design components are recommended to guarantee connectivity and redundancy between the two networks? (Choose three.)

- A. Enable mutual redistribution between OSPF and RIP on one border router.
- B. Enable mutual redistribution between OSPF and RIP on Router A and Router B using route tags.
- C. Increase the administrative distance to 130 for the OSPF external prefixes on Router A and Router B.
- D. Implement an ACL on Router A and Router B to prevent OSPF external routes from being installed in the OSPF database.
- E. Filter external routes on Router A and Router B based on route tags.

**Answer:** BCE

#### NEW QUESTION 134

Which two options are two advantages of summarizing networks at the aggregation layer rather than



at the core? (Choose two.)

- A. It prevents the core from having unnecessary routes.
- B. It no longer needs a core layer.
- C. It prevents black hole routing.
- D. It avoids network-wide impact upon VLAN changes local to the aggregation devices.
- E. it allows for optimal routing

**Answer:** AD

#### NEW QUESTION 135

The service provider that you work for wants to offer IPv6 internet service to its customers without upgrading all of its access equipment to support IPv6, which transition technology do you recommend?

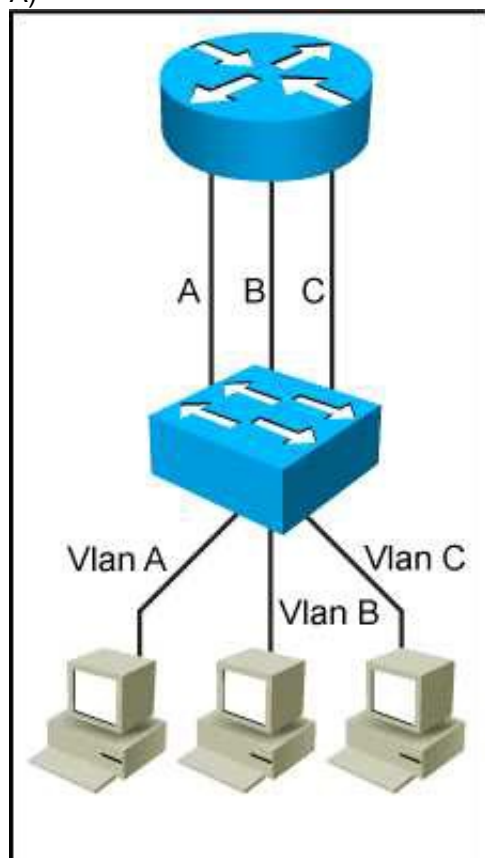
- A. NAT64
- B. CGN
- C. Dual-stack CPE
- D. 6RD

**Answer:** D

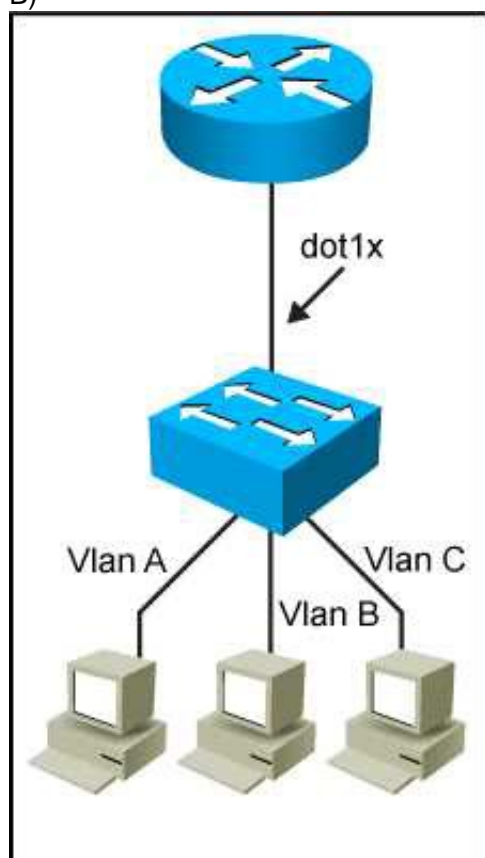
#### NEW QUESTION 137

Which network topology is characterized by a link fate-sharing situation?

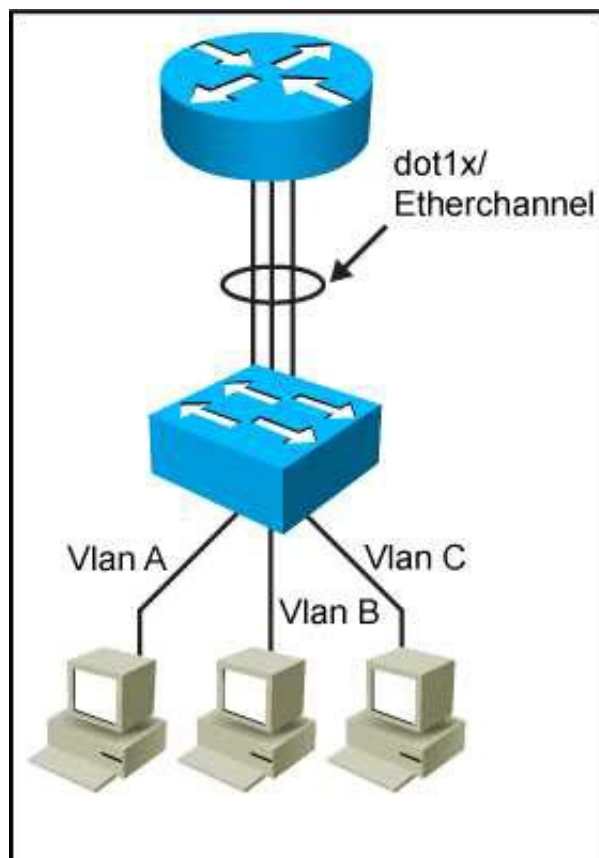
A)



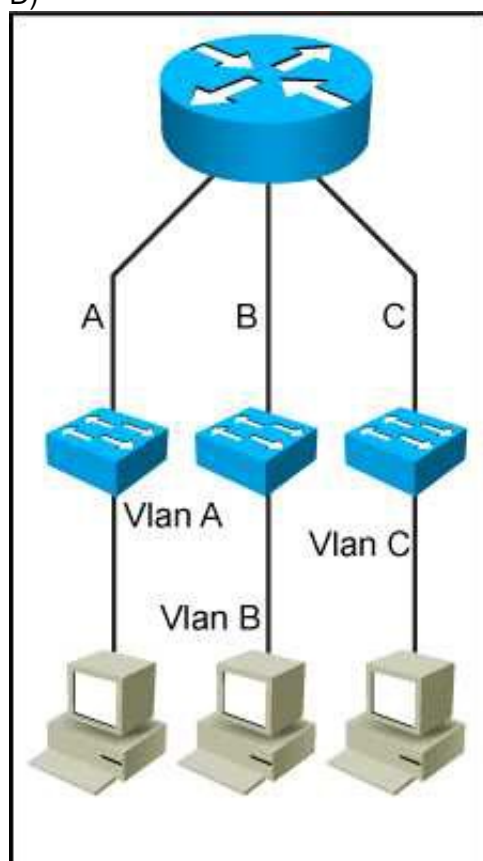
B)



C)



D)

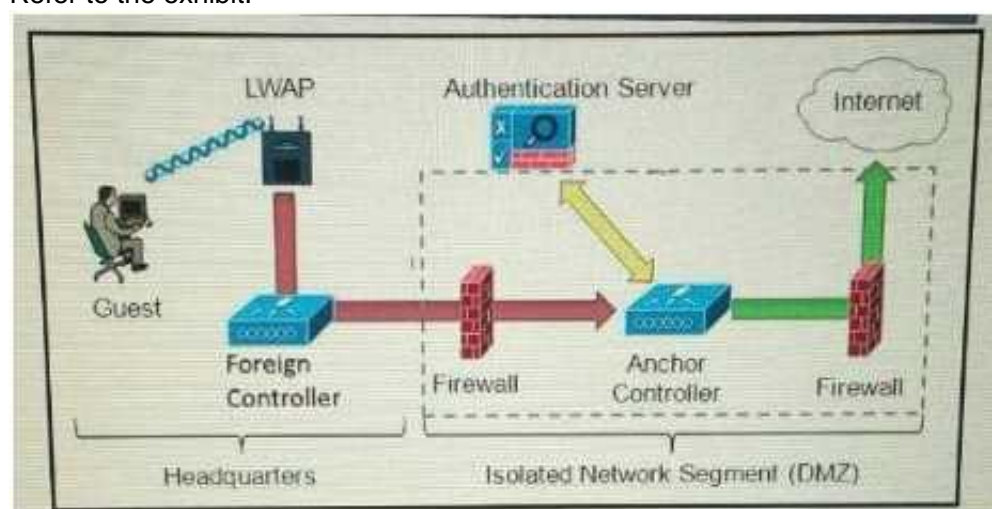


- A. Exhibit A
- B. Exhibit B
- C. Exhibit C
- D. Exhibit D

**Answer: B**

#### NEW QUESTION 139

Refer to the exhibit.



Which solution must be used to send traffic from the foreign wireless LAN controller to the anchor wireless LAN controller?

- A. Encapsulate packets into an EoIP tunnel and send them to the anchor controller
- B. Send packets from the foreign controller to the anchor controller via Layer 3 MPLS VPN or VRF-Lite
- C. Send packets from the foreign controller to the anchor controller via IPinIP or IPsec tunnel
- D. Send packets without encapsulation to the anchor controller over the routed network

**Answer:** A

#### NEW QUESTION 141

A healthcare customer requested that health statistics from their infrastructure devices are to be sent over their service provider MPLS network. Which protocol must be enabled?

- A. SNMPv3
- B. Syslog TLS
- C. syslog
- D. SNMPv2
- E. SSH

**Answer:** A

#### NEW QUESTION 143

Which two application requirements are mandatory for traffic to receive proper treatment when placed in the priority queue? (Choose two)

- A. WRED drop treatment
- B. Small transactions (HTTP – like behavior)
- C. Tolerance to packet loss
- D. Intolerance to jitter
- E. TCP based application

**Answer:** CD

#### NEW QUESTION 146

Which two options must be part of your network design to support dynamic mutual redistribution between multiple OSPFv2 and IS-IS boundaries, to avoid suboptimal routing? (Choose two)

- A. Matching OSPF external routes
- B. Route aggregation
- C. Route tagging
- D. Route filtering
- E. Disabling IS-IS wide metrics

**Answer:** CD

#### NEW QUESTION 149

Which option describes the fundamental design differences between an IP-based network design and a SAN-based?

- A. An IP-based design has redundant connectivity in the fabric and high amounts of east-west traffic, whereas a SAN-based design uses redundancy from a dual-attached host, which uses separate fabrics and has very little east-west traffic
- B. An IP-based design has redundancy from the host and high amounts of east-west traffic, whereas a SAN-based design uses redundancy in the fabric and very little east-west traffic
- C. An IP-based design has redundant connectivity in the fabric and high amounts of east-west traffic, whereas a SAN-based design uses zoning based redundancy which uses separate fabrics and has very little east-west traffic
- D. An IP-based design has redundant connectivity in the fabric and very little east-west traffic, whereas a SAN-based design uses redundancy in the host, which uses separate fabrics and has high amounts of east-west traffic

**Answer:** A

#### NEW QUESTION 153

Which three options are IS-IS design considerations when connecting two Layer 3 switches directly using a 10 GBASE-T cabling and formatting an IS-IS neighbor adjacency?

- A. The default IS-IS network type is point-to-point so a DIS is not elected
- B. A DIS is elected between the IS-IS neighbors and the elected DIS is pre-empted if router with a higher system ID is connected
- C. The area, levels, and interface MTU parameters must match, and system MTU must be unique for two IS-IS routers to become adjacent
- D. Faster IS-IS hello and dead timers increase bandwidth and CPU use, and may cause instability
- E. The IS-IS hello and dead timers should be tuned to detect failures as quickly as possible
- F. A DIS is elected between the IS-IS neighbors and the elected Dis is pre-empted if a router with a lower system ID is connected
- G. The hello and dead timers must match for two IS-IS routers to become adjacent

**Answer:** CDF

#### NEW QUESTION 155

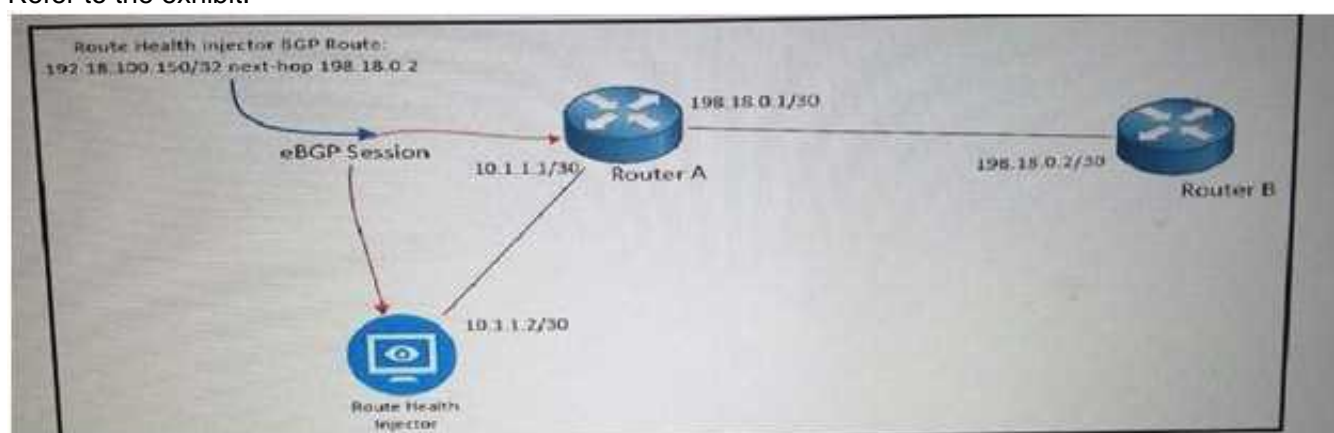
Which options do you investigate first when designing fast network convergence?

- A. Routing protocol database size
- B. MTU of the involved interfaces
- C. Link speed between sites
- D. Supported Layer 3 failure detection mechanism

**Answer:** D

### NEW QUESTION 158

Refer to the exhibit.



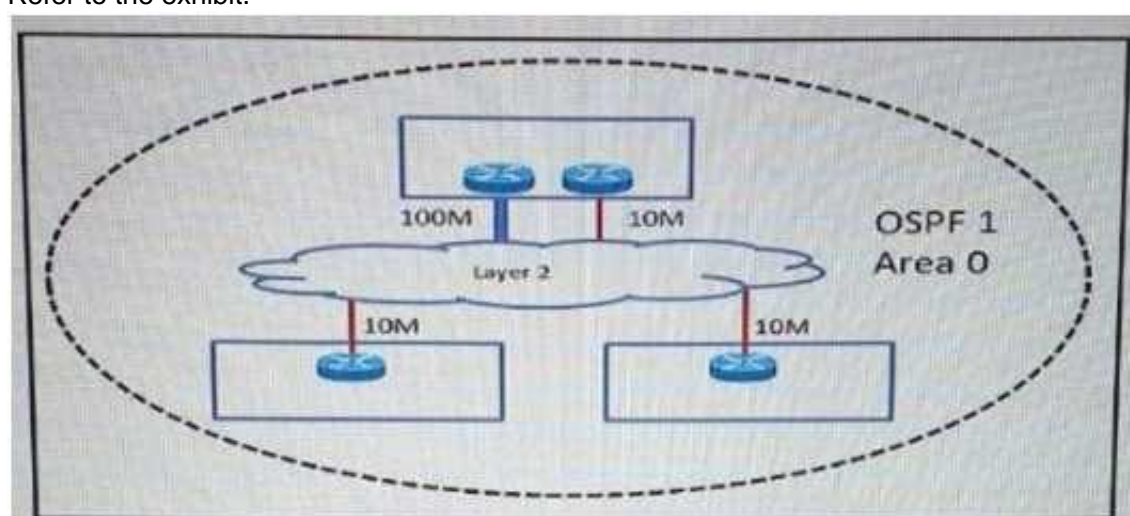
As part of your design to monitor reachable services, a route health injector has just been deployed on the network. The route health injector injects /32 host routes into BGP with the next hop of 192.18.0.2, but the /32 routes are not being installed into the RIB or FIB of Router

- A. Which BGP feature must be deployed to make be deployed to make the design to work?
- B. BGP community attributes
- C. MP-BGP
- D. BGP AS-Path prepending
- E. eBGP multihop attribute

**Answer: A**

### NEW QUESTION 159

Refer to the exhibit.



An enterprise has three sites over a Layer 2 Metro Ethernet ELAN service. 100Mb/s and 10 Mb/s links have been provisioned to provide redundancy for the head office. When OSPF routing enabled to provide connectivity and the correct bandwidth statement has been applied to each interface, the branch sites observe two equal-cost routes to the head office. The enterprise wants to send all traffic through the 100 Mb/s link and use the 10Mb/S link strictly as a backup. Which OSPF network type must be set to ensure that the head office 100 Mb/s circuit is preferred over the 10 Mb/s circuit, at the same time minimize the amount of configuration required on all of the routers throughout the network?

- A. NBMA
- B. Point-to-multipoint
- C. Point-to-point
- D. Broadcast

**Answer: C**

### NEW QUESTION 161

A retail company connects its 250 branches across the globe to the core using MPLS Layer 3 VPN. The company is planning to migrate its traditional telephony services to Voip, in order to reduce the cost of international calls. What are the two primary concerns when implementing this migration? (Choose two)

- A. Jitter
- B. Call routing design
- C. SRST
- D. MTU
- E. Available bandwidth

**Answer: AE**

### NEW QUESTION 164

Which two items are required for data plane hardening of an infrastructure device? (Choose two)

- A. Disable unused services
- B. Routing protocol authentication
- C. SNMPv3
- D. Redundant AAA servers
- E. Infrastructure ACLs
- F. Warning banners
- G. Control Plane Policing

**Answer: AE**



#### NEW QUESTION 165

You are designing dual-homed active/active ISP connections from an enterprise customer for internet services, and you have recommended BGP between the customer and ISP. When three security mechanisms do you enable to secure the connection? (Choose three)

- A. uRPF is strict mode
- B. remote triggered black holes
- C. IDS
- D. GTSM
- E. Routing protocol authentication
- F. uRPF in loose mode

**Answer:** BEF

#### NEW QUESTION 170

Which interconnectivity method offers the fastest convergence in the event of a unidirectional issue between three Layer 3 switches connected together with routed links in the same rack in a data center?

- A. Fiber Ethernet connectivity with UDLD enabled
- B. Copper Ethernet connectivity with BFD enabled
- C. Fiber Ethernet connectivity with BFD enabled
- D. Copper Ethernet connectivity with UDLD enabled

**Answer:** C

#### NEW QUESTION 173

Which effect of designing a Layer 2 network using the PortFast fast feature with PVST+ is true?

- A. It shuts down the port when receiving the superior BPDU
- B. It accelerates the network convergence on the trunk uplinks
- C. In combination with BPDU filtering, it causes the switch port to stay in the forwarding state
- D. It moves the switch port directly to the forwarding state

**Answer:** D

#### NEW QUESTION 177

Which three reasons to deploy an IDS sensor in promiscuous mode when you design a security solution are true? (Choose three.)

- A. Solution should be resistant to sensor failure.
- B. Solution should allow for stream normalization.
- C. Solution should not impact jitter and latency for voice traffic.
- D. Solution should allow for signature-based pattern matching.
- E. Solution should allow to deny packets inline.

**Answer:** ACD

#### NEW QUESTION 181

Which two IoT use cases require the low latency and high reliability that 5G networks provide?

- A. Smart Home
- B. Automotive
- C. Health and Wellness
- D. Smart Cities
- E. Sports and Fitness

**Answer:** BC

#### NEW QUESTION 185

Which two statements about VXLAN are true? (Choose two)

- A. VXLAN is a Cisco proprietary solution
- B. VXLAN is an encapsulation method used to create a Layer 3 overlay network
- C. VXLAN can be used to enforce Layer 2 isolation in a multitenant infrastructure
- D. VXLAN uses the Spanning Tree protocol for loop prevention
- E. VXLAN overcomes the 802.1Q virtual LAN address space limitation

**Answer:** BE

#### NEW QUESTION 186

Which two conditions must be met for EIGRP to maintain an alternate loop-free path to a remote network? (Choose two)

- A. The Reported Distance from a successor is lower than the local Feasible Distance
- B. The Reported Distance from a successor is higher than the local Feasible Distance
- C. A feasible successor must be present
- D. The feasible Distance from a successor is lower than the local Reported Distance
- E. The feasibility condition do not need to be met



**Answer:** AC

#### NEW QUESTION 189

When designing fast convergence on a network using loop-free alternate, on which two basis can the next-hop routes be precomputed? (Choose two)

- A. Per neighbor
- B. Per network type
- C. Per link
- D. Per prefix
- E. Per failure type

**Answer:** CD

#### NEW QUESTION 194

A network has several routers running IS-IS L1L2 mode on the same Ethernet segment. Which action reduces to a minimum the number of IS-IS adjacencies in this segment?

- A. Define only the router on the segment to be DIS
- B. Change all routers connected to this segment to a single-level area
- C. Make the interface priority on the backup DIS lower than the primary DIS
- D. Change half the routers to be L1-only and other half to be L2-only on this segment

**Answer:** B

#### NEW QUESTION 199

Which solution suppress the effect of excessive interface flapping events on routing protocols?

- A. IP Event Dampening
- B. SPF Backoff
- C. Carrier Delay
- D. BFD

**Answer:** A

#### NEW QUESTION 200

Which are two open-source SDN controllers? (Choose two)

- A. Big Cloud Fabric
- B. OpenContrail
- C. Application Policy Infrastructure Controller
- D. Virtual Application Networks SDN controller
- E. OpenDaylight

**Answer:** BE

#### NEW QUESTION 203

In a VPLS design solution, which situation indicates that BGP must be used instead of LDP in the control plane?

- A. MAC address learning scales better through BGP
- B. BGP supports VPLS interworking
- C. Pseudowire configuration overhead is reduced
- D. There are no full-mesh pseudowire due to the route reflection feature of BGP

**Answer:** A

#### NEW QUESTION 208

Which two SAN designs appropriate to support large-scale SAN environments? (Choose two)

- A. Edge-core-edge design
- B. Fibre Channel forwarder
- C. Split fabric design
- D. Core-edge design
- E. Dual fabric design

**Answer:** AD

#### NEW QUESTION 213

Which mechanism does OSPF use to prevent loops in an MPLS Layer 3 VPNS environment?

- A. Sham link
- B. Down bit
- C. P-Bit
- D. Domain ID
- E. Routing bit

**Answer:** B

#### NEW QUESTION 218

As part of network design, two geographically separated data centers must be interconnected using Ethernet-over-MPLS pseudowire. The link between the sites is stable, the topology has no apparent loops, and the root bridges for the respective VLANs are stable and unchanging. Which aspect must be the part of the design to mitigate the risk of connectivity issues between the data centers?

- A. Enable Spanning Tree on one data center, and Rapid Reconfiguration of Spanning tree on the other
- B. Ensure that the spanning tree diameter for one or more VLANs is not too large.
- C. Enable UDLD on the link between the data centers.
- D. Enable root guard on the link between the data centers.

**Answer:** B

#### NEW QUESTION 222

An enterprise campus is adopting a network virtualization design solution with these requirements  
It must include the ability to virtualize the data plane and control plane by using VLANs and VRFs  
It must maintain end-to-end logical path transport separation across the network  
resources available grouped at the access edge  
Which two primary models can this network virtualization design be categorized? (Choose two)

- A. Path isolation
- B. Session isolation
- C. Group virtualization
- D. Services virtualization
- E. Edge isolation

**Answer:** AD

#### NEW QUESTION 223

A large ISP is analysing which IGP meets these following requirements  
Network must be resilient against unstable MTU in one side of newly released transmission pieces of equipment  
Network must support MPLS traffic engineering solution for future use  
Which IGP must be selected and why?

- A. ISIS : in case MTU changes your TE tunnels keep the LSP stable
- B. OSPF: adjacency remains up even if MTU changes
- C. OSPF: in case MTU changes your TE tunnels keep the LSP stable
- D. ISIS: adjacency remains up even if MTU changes

**Answer:** D

#### NEW QUESTION 225

Which are two data plane hardening techniques? (Choose two)

- A. Infrastructure ACLs
- B. Control Plane Policing
- C. Redundant AAA servers
- D. Disable unused services
- E. Routing protocol authentication
- F. SNMPv3
- G. Warning banners

**Answer:** AB

#### NEW QUESTION 226

Which solution prevents microloops from be formed during network convergence time?

- A. RSVP-TE
- B. LFA
- C. Prefix suppression
- D. RLFA

**Answer:** D

#### NEW QUESTION 227

On a large enterprise security solution, which two options are IDS or IPS modes of operation?  
(Choose two)

- A. Transparent mode
- B. Routed mode
- C. Inline mode
- D. Traffic discovery mode
- E. Promiscuous mode

**Answer:** C&E

#### NEW QUESTION 228

Which two conditions are required for successful route aggregation? (Choose two)

- A. Contiguous prefix allocation
- B. Logical separation between zones or layers within networks
- C. Matching traffic aggregation with route aggregation locations
- D. Consistent prefix allocations per network
- E. Physical separation between zones or layers within networks

**Answer:** BD

#### NEW QUESTION 230

In an Ethernet link containing five routers with OSPF network interface type configured as broadcast, how many OSPF adjacencies are established on this Ethernet link?

- A. 7
- B. 5
- C. 10
- D. 20
- E. 6

**Answer:** A

#### NEW QUESTION 232

DRAG DROP

Drag the IT standards on the left to their network design application on the right. Not all applications will be used.

FCAPS	Change management
ITIL®	Governance framework
CMP	OSI-specified network management protocol
TMN	Telecommunications systems management framework
	Network management framework
	Enterprise architecture framework

- A. Mastered
- B. Not Mastered

**Answer:** A

**Explanation:**

ITIL®
Governance framework
CMP
TMN
FCAPS
Enterprise architecture framework

#### NEW QUESTION 233

DRAG DROP

Drag the QoS tools on the left and drop each into its corresponding function on the right.	
Policing	Addresses congestion that is due to speed mismatches when CIR is not exceeded.
Marking	Drops traffic to ensure that the committed or offered rate are not exceeded.
Buffering	Allows drops to be minimized based on traffic classification when CIR is exceeded.
WRED	Allows for consistent classification within a DiffServ domain.
Shaping	Avoids congestion via selective traffic dropping within the network.
ECN	Avoids congestion by end hosts reducing their traffic rates when congestion is detected.

- A. Mastered  
 B. Not Mastered

**Answer:** A

**Explanation:**

Buffering
Policing
Shaping
Marking
WRED
ECN

#### NEW QUESTION 237

##### DRAG DROP

A company recently had an outage after an employee plugged a switch into the corporate network, causing a change in the root bridge selection. You have been tasked to redesign the network to avoid such outages in the future. Drag the Rapid PVST+ features (on the left) that will prevent reoccurrences of this incident and drop them into their definitions on the right.	
Root Guard	A deterministic method to set the root bridge and the backup root bridge for each VLAN
BPDU Guard	Prevents switches from propagating old or corrupt VLAN information through the Layer 2 network
DTP	Puts the interface into an errdisable state if a connected device attempts to participate in STP
VTP Set to Transparent	A preventive method of protecting an interface from accepting a superior BPDU
PortFast	
Spanning-Tree Priority Changed from Default	

- A. Mastered  
 B. Not Mastered

**Answer:** A

**Explanation:**

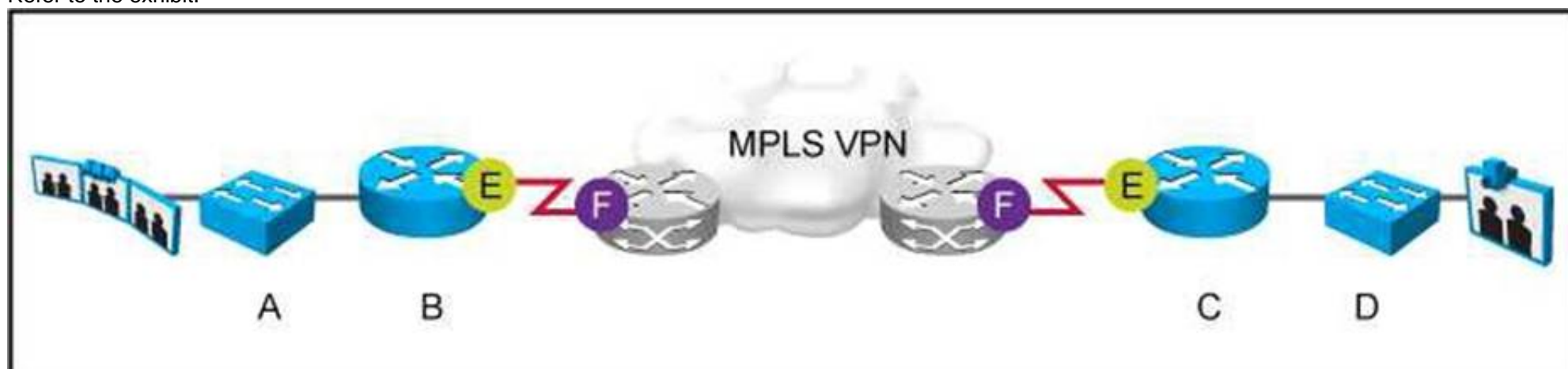


Spanning-Tree Priority Changed from Default
VTP Set to Transparent
BPDU Guard
Root Guard

NEW QUESTION 241

DRAG DROP

Refer to the exhibit.



Company ACME is adding a Cisco TelePresence system for real-time collaboration and wants to ensure the highest user experience. Drag and drop the necessary QoS mechanisms from the left to the right in any order. Not all options will be used.

Enable policer on switches A and D	QoS mechanism 1
Enable LLQ or CBWFQ for real-time interactive (CS4)	QoS mechanism 2
Rewrite DSCP to 0 to ensure equal treatment for all traffic	QoS mechanism 3
Enable HQoS shaper on router interface E if necessary	QoS mechanism 4
Enable HQoS shaper on router interface F	QoS mechanism 5
Enable CBWFQ for signaling traffic (CS3)	
Remark traffic at router interface F	
Trust DSCP at switches A and D	
Remark DSCP at router interface E	

A. Mastered  
B. Not Mastered



Answer: A

Explanation:

Enable LLQ or CBWFQ for real-time interactive (CS4)

Enable HQoS shaper on router interface E if necessary

Enable CBWFQ for signaling traffic (CS3)

Trust DSCP at switches A and D

Remark DSCP at router interface E

#### NEW QUESTION 244

DRAG DROP

A small local business recently had an outage after an employee plugged a switch into the corporate network, which caused the traffic pattern in the network to change. You have been tasked to redesign the network so that this does not happen again. From the left side to the right side, drag the PVRST+ features that should be implemented to prevent the corresponding root cause. Not all sources will be used.

Spanning-tree priority changed from default

DTP

VTP set to transparent

BPDU Guard

PortFast

Root Guard

Prevents changing the root bridge

Target 1

Target 2

Target 3

Prevents advertisement of unwanted VLANs

Target 4

- A. Mastered
- B. Not Mastered

Answer: A

Explanation:

Prevents changing the root bridge

Spanning-tree priority changed from default

BPDU Guard

Root Guard

Prevents advertisement of unwanted VLANs

VTP set to transparent

NEW QUESTION 247

.....

## THANKS FOR TRYING THE DEMO OF OUR PRODUCT

Visit Our Site to Purchase the Full Set of Actual 352-001 Exam Questions With Answers.

We Also Provide Practice Exam Software That Simulates Real Exam Environment And Has Many Self-Assessment Features. Order the 352-001 Product From:

<https://www.2passeasy.com/dumps/352-001/>

## Money Back Guarantee

### 352-001 Practice Exam Features:

- \* 352-001 Questions and Answers Updated Frequently
- \* 352-001 Practice Questions Verified by Expert Senior Certified Staff
- \* 352-001 Most Realistic Questions that Guarantee you a Pass on Your FirstTry
- \* 352-001 Practice Test Questions in Multiple Choice Formats and Updatesfor 1 Year