

CompTIA

Exam Questions N10-007

CompTIA Network+ N10-007



NEW QUESTION 1

- (Exam Topic 1)

A device operating at Layer 3 of the OSI model uses which of the following protocols to determine the path to a different network?

- A. STP
- B. RTP
- C. RIP
- D. NTP
- E. SIP

Answer: C

NEW QUESTION 2

- (Exam Topic 1)

A network administrator has been given a network of 172.16.85.0/21 and wants to know the usable range of IP addresses on that subnet. Which of the following indicates the correct IP address range?

- A. 172.16.80.0-172.16.85.254
- B. 172.16.80.0-172.16.88.255
- C. 172.16.80.1-172.16.87.254
- D. 172.16.80.1-172.16.85.255

Answer: C

NEW QUESTION 3

- (Exam Topic 1)

Which of the following would a company place at the edge of its network if it wants to view and control which Internet applications are being used?

- A. VPN concentrator
- B. NGFW
- C. IDS/IPS
- D. Proxy server

Answer: B

NEW QUESTION 4

- (Exam Topic 1)

Which of the following DNS record types is an alias?

- A. CNAME
- B. PTR
- C. NS
- D. SRV

Answer: A

NEW QUESTION 5

- (Exam Topic 1)

A technician is troubleshooting a workstation's network connectivity and wants to confirm which switchport corresponds to the wall jack the PC is using. Which of the following concepts would BEST jack the technician?

- A. Consistent labeling
- B. Change management
- C. Standard work instruction D .Inventory management
- D. Network baseline

Answer: A

NEW QUESTION 6

- (Exam Topic 1)

A network technician installs a web server on the firewall. Which of the following methods should the technician implement to allow access to outside users without giving access to the inside network?

- A. VLAN
- B. DMZ
- C. SNMP
- D. NTP

Answer: B

NEW QUESTION 7

- (Exam Topic 1)

A company has just refreshed the hardware in its datacenter with new 10G Ethernet switches wishes to set up a new storage area network but must use existing infrastructure. Which of the following storage standards should the technician use?

- A. iSCSI
- B. Fibre Channel
- C. NAS
- D. InfinBand

Answer: C

NEW QUESTION 8

- (Exam Topic 1)

Employees want the ability to use personal devices on the guest network while working out at the company gym. In order to meet the request, which of the following policies requires employee adherence?

- A. AUP
- B. SLA
- C. NDA
- D. MOU

Answer: A

NEW QUESTION 9

- (Exam Topic 1)

A new building needs to be joined to an existing network, but management has decided that running fiber is too expensive. Since the buildings are about 1000ft (305m) apart, the IT department has been asked to propose alternatives. Which of the following is the BEST device to add to each building to facilitate the extension of the network while meeting budgetary demands?

- A. Switch
- B. Router
- C. Media converter
- D. PTP wireless

Answer: D

NEW QUESTION 10

- (Exam Topic 1)

A penetration tester has been tasked with reconnaissance to determine which ports are open on the network. Which of the following tasks should be done FIRST? (Choose two.)

- A. Network scan
- B. Banner grab
- C. Tracert
- D. DHCP server check
- E. Brute-force attack

Answer: AC

NEW QUESTION 10

- (Exam Topic 1)

A technician is installing a new wireless badging system on a hospital network. The requirements of the badging system are for it to have its own SSID and low power levels. The badging system has to cover 99.9% of the hospital. Which of the following is the BEST action to take to meet the system requirements?

- A. Install additional WAPs
- B. Install external antennas
- C. Move the WAPs closer to the more populated area
- D. Change the antenna types

Answer: A

NEW QUESTION 13

- (Exam Topic 1)

An entire enterprise cannot access a specific website. The network technician knows the website was accessible last week. The technician can also ping the website. Which of the following is the technician MOST likely to find upon investigation?

- A. The firewall is misconfigured.
- B. The network is being hit by a zero-day attack.
- C. The SSL certificate is untrusted.
- D. The SSL certificate has expired.

Answer: D

NEW QUESTION 14

- (Exam Topic 1)

A network administrator is redesigning network security after an attack. During the attack, an attacker used open cubicle location to attach devices to the network. The administrator wants to be able to monitor future attack in a safe environment and determine the method of attack. Which of the following should the administrator do to Best meet this requirement?

- A. Create a VLAN for the unused ports and create a honeypot on the VLAN.
- B. Install a BPDU guard on switchports and enable STP

- C. Create a DMZ for public server and secure a segment for the internal network
- D. Install antivirus software and set an ACL on the servers.

Answer: A

NEW QUESTION 17

- (Exam Topic 1)

Users are reporting Internet connectivity issues. The network administrator wants to determine if the issues are internal to the company network or if there is an issue with the ISP. Which of the following tools should be used to BEST determine where the outage is occurring?

- A. traceroute
- B. ping
- C. nslookup
- D. netstat

Answer: A

NEW QUESTION 18

- (Exam Topic 1)

To replace a defective UPS, the network administrator must take the switch offline. The administrator wants to be able to perform maintenance UPS in the future without affecting the availability of the attached switch. Which of the following would BEST allow this to happen?

- A. Add a redundant power supply to the switch
- B. Implement stacking on the switches in the rack
- C. Add a second UPS into the rack
- D. Install a power converter for the switch

Answer: A

NEW QUESTION 22

- (Exam Topic 1)

A technician must determine if a web page user's visits are connecting to a suspicious website's IP address in the background. Which of the following tools would provide the information on TCP connections?

- A. netstat
- B. tracert
- C. arp
- D. ipconfig
- E. route

Answer: A

NEW QUESTION 24

- (Exam Topic 1)

Which of the following protocols are classified as connectionless? (Select TWO)

- A. TFTP
- B. FTP
- C. HTTP
- D. SNMP
- E. SSH
- F. IMAP

Answer: AD

Explanation:

Trivial FTP (TFTP) is a connectionless file transfer program.

NEW QUESTION 29

- (Exam Topic 1)

A technician is sent to a remote office to set up a device to connect to the internet. The company Standard document requires stateful inspection.

Which of the following should the technician install?

- A. ROUTER
- B. Multilayer switch
- C. Firewall
- D. Bridge

Answer: C

NEW QUESTION 32

- (Exam Topic 1)

A network technician needs to set up an access method for Ann, a manager, to work from home. Ann needs to locally mapped corporate resources to perform her job. Which of the following would provide secure access to the corporate resources?

- A. Utilize an SSH connection to the corporate server.

- B. Use TFTP to transfer files to corporate resources.
- C. Allow RDP through an external firewall.
- D. Connect utilizing client-to-site VPN.

Answer: D

NEW QUESTION 35

- (Exam Topic 1)

A network technician recently installed a new server on a network. The technician must ensure the server does not have any unnecessary services running. The IP address of the server is 204.211.38.50

Which of the following commands would allow the technician to make this determination?

- A. nmap
- B. pathping
- C. route
- D. nslookup

Answer: A

NEW QUESTION 37

- (Exam Topic 1)

A critical vulnerability is discovered on a network device. The vendor states it has already patched this vulnerability in its current release. Which of the following actions should an administrator take?

- A. Change the default password
- B. Use a firewall in front of the device.
- C. Update the firmware.
- D. Upgrade the configuration.

Answer: C

NEW QUESTION 40

- (Exam Topic 1)

A technician is setting up a public guest network for visitors to access the Internet that must be separate from the corporate network. Which of the following are the BEST steps for the technician to take with minimum overhead configuration? (Choose two.)

- A. Enable SSID broadcasting to identify the guest network
- B. Configure visitor devices to use static IP addresses
- C. Enable two-factor authentication on visitor devices
- D. Configure the access point to use WPA2-AES encryption
- E. Ensure the access point is not running in mixed mode

Answer: AB

NEW QUESTION 41

- (Exam Topic 1)

A network technician is setting up a new router. Since it is exposed to the public, which of the following are the BEST steps the technician should take when setting up this device? (Choose two.)

- A. Disable unnecessary services.
- B. Use private IP addresses.
- C. Allow remote management access.
- D. Disable the console port.
- E. Enable encryption.
- F. Upgrade to the latest firmware.

Answer: AF

NEW QUESTION 46

- (Exam Topic 1)

A technician is assigned to secure a basic wireless network. Which of the following authentication protocol should the technician use to performed this task (select TWO).

- A. RDP
- B. SNMP
- C. WPA2
- D. EAP SSL

Answer: CD

NEW QUESTION 48

- (Exam Topic 1)

A user checks an IP address using an external website. The address is different than the one the user sees when opening a command prompt and typing in ipconfig/all. The user does not understand why the two tools show different IP addresses. This is BEST explained by the interworking of:

- A. network devices
- B. packet flow

- C. public/private networks
- D. traffic-routing protocols

Answer: C

NEW QUESTION 52

- (Exam Topic 1)

A technician is troubleshooting a point-to-point fiber-optic connection. The technician is at a remote site and has no connectivity to the main site. The technician confirms the switch and the send-and-receive light levels are within acceptable range. Both fiber SFPs are confirmed as working. Which of the following should the technician use to reveal the location of the fault?

- A. OTDR
- B. Light meter
- C. Tone generator
- D. CSU/DSU

Answer: A

NEW QUESTION 54

- (Exam Topic 1)

A technician is troubleshooting network connectivity issue with a remote host. Which of the following tools would BEST between the client and the remote host?

- A. tracer
- B. ping
- C. tcpdump
- D. pathping
- E. netstate
- F. nslookup
- G. route

Answer: EF

NEW QUESTION 55

- (Exam Topic 1)

A network administrator receives a call from the sales department requesting ports 20 and 21 be opened on the company's firewall to allow customers to retrieve a large file. Which of the following should the administrator perform BEFORE making the needed changes? (Choose two.)

- A. Document the reason for the request
- B. Scan the file for malware to protect the sales department's computers
- C. Follow the company's approval process for the implementation
- D. Install a TFTP server for the customers to use for the transfer
- E. Create a honeypot to store the file on for the customers to use
- F. Write the SLA for the sales department authorizing the change

Answer: AC

NEW QUESTION 60

- (Exam Topic 1)

A technician discovers that multiple switches require a major update. Which of the following policies should be followed?

- A. Change management policy
- B. Remote access policy
- C. Acceptable use policy
- D. Memorandum of understanding

Answer: A

NEW QUESTION 61

- (Exam Topic 1)

A router is set up to utilize RIPv2 to route traffic throughout the network. Which of the following routing metrics is used to determine the path?

- A. Distance
- B. bandwidth
- C. Speed
- D. hop count

Answer: D

NEW QUESTION 64

- (Exam Topic 1)

A company has two geographically separate locations that need to connect using a VPN. Which of the following devices must be specifically configured to allow VPN traffic into the network?

- A. Firewall
- B. Switch
- C. Router
- D. Modem

Answer: A

NEW QUESTION 69

- (Exam Topic 1)

A technician is troubleshooting network connectivity issues with a remote host. Which of the following tools would BEST inform the technician of nodes between the client and the remote host? (Choose two.)

- A. tracer
- B. ping
- C. tcpdump
- D. pathping
- E. netstat
- F. nslookup
- G. route

Answer: AD

NEW QUESTION 74

- (Exam Topic 1)

A network engineer planning for wireless connectivity in large office building. Currently, the office building contains both legacy and newer devices. Which of the following wireless network routers should engineer select for the fastest throughput for all wireless devices in the office building?

- A. 802.11ac
- B. 802.11b
- C. 802.11g
- D. 802.11n

Answer: A

Explanation:

<https://www.forbes.com/forbes/welcome/?toURL=https://www.forbes.com/sites/gordonkelly/2014/12/30/802-11>

NEW QUESTION 79

- (Exam Topic 1)

A network technician is repurposing a switch that has been in storage for some time. The device has been wiped to factory defaults. Which of the following should be done FIRST to ensure the device has been hardened before configuration?

- A. Generate new keys.
- B. Disable unused ports.
- C. Check for updated firmware.
- D. Configure the default VLAN.

Answer: C

NEW QUESTION 80

- (Exam Topic 1)

A disgruntled employee executes a man-in-the-middle attack on the company network. Layer 2 traffic destined for the gateway is redirected to the employee's computer. This type of attack is an example of:

- A. ARP cache poisoning
- B. IP spoofing
- C. amplified DNS attack
- D. evil twin

Answer: A

NEW QUESTION 84

- (Exam Topic 1)

A network technician downloaded new firmware for the company firewall. Which of the following should the network technician verify to ensure the downloaded file is correct and complete?

- A. File hash
- B. File date
- C. File type
- D. File size

Answer: A

NEW QUESTION 87

- (Exam Topic 1)

A network administrator wishes to ensure there are no unnecessary open communication paths into a server. Using a port scanner, the administrator finds that ports are reported as closed. Which of the following BEST explains this response?

- A. The ports belong to an active system and are denying requests
- B. The ports are associated with deprecated services
- C. The ports do not belong to a live system
- D. The ports replied with a SYN/ACK response

Answer: B

NEW QUESTION 89

- (Exam Topic 1)

A network technician is implementing a solution on the network to hide the workstation internal IP addresses across a WAN. Which of the following is the technician configuring?

- A. QoS
- B. DMZ
- C. RIP
- D. NAT

Answer: D

NEW QUESTION 92

- (Exam Topic 1)

A technician is allocating the IP address space needed for a remote office. This office will contain the engineering staff with six employees and the digital marketing staff with 55 employees. The technician has decided to allocate the 192.1.0/24 block to the remote office. The engineering staff has been allocated the 192.168./29 subnet. Using the LEAST amount of space possible, which of the following would be the last usable IP address in the engineering subnet?

- A. 192.168.1.62
- B. 192.168.1.63
- C. 192.168.1.70
- D. 192.168.1.71

Answer: A

NEW QUESTION 95

- (Exam Topic 1)

A company dedicates deploy customer –facing, touch-screen kiosks. The kiosks appear to have several open service ports that potentially became compromised. Which of the following is the MOST effective way to protect the kiosk?

- A. Install an IDS to monitor all traffic to and from the kiosk.
- B. install honeypots on the network to detect and analyze potential kiosks attacks before they occur.
- C. Enable switchport security on the ports to which the kiosks are connected to prevent network level attacks.
- D. Create a new segment with ACLs, limiting kiosks traffic with the internal network

Answer: A

NEW QUESTION 98

- (Exam Topic 1)

Which of the following storage network technologies inherently leverages block-level storage?

- A. NAS
- B. SAN
- C. FCoE
- D. iSCSI
- E. FTP

Answer: A

NEW QUESTION 99

- (Exam Topic 1)

Two building used to be connected by wireless bridge, but they are upgrading to fiber. Which of the following new devices would be required at the demarcation points?

- A. Wireless access point
- B. Router
- C. Media converter
- D. Firewall

Answer: B

NEW QUESTION 102

- (Exam Topic 1)

Which of the following datacenter security methodologies is MOST likely to remain usable during a network outage?

- A. biometric scanners
- B. door locks
- C. video surveillance
- D. motion detectors

Answer: B

NEW QUESTION 106

- (Exam Topic 1)

A network administrator would like to collect information from several networking devices using SNMP. Which of the following SNMP options should a network administrator use to ensure the data transferred is confidential?

- A. authpriv
- B. SHA
- C. MD5
- D. Authentication passphrase

Answer: A

NEW QUESTION 110

- (Exam Topic 1)

A network technician is creating a new subnet for 488 host machines. The technician is told to use a class B address scheme when making the subnet and is instructed to leave as much room as possible for additional subnets of the same size. Which of the following subnets would fulfill these requirements?

- A. 10.5.4.0/22
- B. 10.233.2.0/23
- C. 172.16.0.0/22
- D. 172.18.0.0/23
- E. 192.168.25.0/24

Answer: D

NEW QUESTION 115

- (Exam Topic 1)

A network administrator frequently needs to assist users with troubleshooting network hardware remotely, but the users are non-technical and unfamiliar with network devices. Which of the following would BEST help the administrator and users during hands-on troubleshooting?

- A. Logical diagrams
- B. MDF documentation
- C. Equipment labeling
- D. Standard operating procedures

Answer: D

NEW QUESTION 116

- (Exam Topic 1)

A network technician receives a call from a user who is experiencing network connectivity issues. The network technician questions the user and learns the user brought in a personal wired router to use multiple computers and connect to the network. Which of the following has the user MOST likely introduced to the network?

- A. Rogue DHCP server
- B. Evil twin
- C. VLAN mismatch
- D. Honeytrap

Answer: A

NEW QUESTION 121

- (Exam Topic 1)

Which of the following would allow a device to maintain the same IP address lease based on the physical address of the network card?

- A. MAC address reservation
- B. Static IP address
- C. IP address exclusion
- D. Custom DNS server entry

Answer: A

NEW QUESTION 122

- (Exam Topic 1)

At which of the following OSI model layers would a router operate?

- A. Physical
- B. Network
- C. Transport
- D. Data link

Answer: B

NEW QUESTION 127

- (Exam Topic 1)

A technician set up a new SOHO network recently. The installed router has four Ethernet ports; however the customer has seven devices that wired connections. Which of the following should the technician do to BEST meet the customer's requirements?

- A. Install a six-port switch

- B. Configure port forwarding on the router
- C. Install WAPs near the devices.
- D. Configure the switchports as EtherChannel ports.

Answer: A

NEW QUESTION 129

- (Exam Topic 1)

A technician is upgrading the firmware on an older KVM switch. The specifications call for a serial port to connect to the computer on one side, and an Ethernet jack to connect to the switch on the other side. Which of the following connectors does the technician need for this cable? (Choose two.)

- A. RG-9
- B. DB-9
- C. RJ-11
- D. DB-25
- E. RJ-45
- F. BNC

Answer: BE

NEW QUESTION 132

- (Exam Topic 1)

A company has completed construction of a new datacenter, and the IT staff is now planning to relocate all server and network equipment from the old site to the new site. Which of the following should the IT staff reference to determine the location of the equipment being moved?

- A. Rack diagrams
- B. Network topology
- C. Standard operating procedures
- D. Wiring documentation

Answer: A

NEW QUESTION 133

- (Exam Topic 1)

A network technician has salvaged several Ethernet cables from a datacenter. The technician attempts to use the cables to connect desktops to the network without success. Which of the following is MOST likely the issue?

- A. The cables have an incorrect pin-out.
- B. The cables are UTP instead of STP.
- C. The cables are Cat 6 instead of Cat 5.
- D. The cables are not plenum rated.

Answer: A

NEW QUESTION 134

- (Exam Topic 1)

A network technician is working on a proposal for email migration from an on-premises email system to a vendor-hosted email in the cloud. The technician needs to explain to management what type of cloud model will be utilized with the cloud-hosted email. Which of the following cloud models should the technician identify in the proposal?

- A. IaaS
- B. PaaS
- C. SaaS
- D. MaaS

Answer: C

NEW QUESTION 135

- (Exam Topic 1)

A network technician wants to remotely and securely access the desktop of a Linux workstation. The desktop is running remote control software without encryption. Which of the following should the technician use to secure the connection?

- A. SSH in tunnel mode
- B. RDP set to console connection
- C. EAP-PEAP
- D. SFTP

Answer: A

NEW QUESTION 139

- (Exam Topic 1)

Which of the following are characteristic of jumbo frames? (Select TWO).

- A. Commonly used on SAN
- B. MTU size greater than 1500
- C. MTU size greater than 10000
- D. Commonly used on IaaS

E. MTU size greater than 12000

Answer: BD

NEW QUESTION 144

- (Exam Topic 1)

A network technician is attempting to troubleshoot a connectivity issue. The issue is only reported during the evening hours, and only a single workstation loses connectivity. Which of the following is the MOST likely cause of the issue?

- A. The router has time-based ACL applied for the network segment.
- B. A light source is creating EMI interference, affecting the UTP.
- C. Nightly backups are consuming excessive bandwidth.
- D. The user has violated the AUP, and Internet access has been restricted

Answer: D

NEW QUESTION 147

- (Exam Topic 1)

When enabling jumbo frames on a network device, which of the following parameters is being adjusted?

- A. Speed
- B. Duplex
- C. MTU
- D. TTL

Answer: C

NEW QUESTION 151

- (Exam Topic 1)

A technician needs to order cable that meets 10GBaseT and safety requirements for an installation between a drop ceiling and a standard ceiling. Which of the following should the technician order to ensure compliance with the requirements?

- A. PVC Cat 5
- B. Plenum Cat 5e
- C. Plenum Cat 6a
- D. PVC Cat 7

Answer: C

Explanation:

10GBaseT A 10 GbE standard designed to run on Cat 6a UTP cabling. Maximum cable length of 100 m.

NEW QUESTION 156

- (Exam Topic 1)

The server team has just installed an application across three different servers. They are asking that all requests to the application are spread evenly across the three servers. Which of the following should the network team implement to fulfil the request?

- A. Proxy server
- B. UTM appliance
- C. Content filter
- D. Load balancer

Answer: D

NEW QUESTION 157

- (Exam Topic 1)

A server in a LAN was configured to act as a gateway between all company computers and an external network. Which of the following network devices offers the ability to increase both performance and security?

- A. Load balancer
- B. IDS
- C. Proxy server
- D. Wireless controller

Answer: C

NEW QUESTION 162

- (Exam Topic 1)

A technician has installed a Linux server in the tax office. The server can access most of the resources on the network, but it cannot connect to another server that has a share for backup. The technician learns that the target server is on a different subnet. Which of the following tools should the technician use to ensure the Linux server can reach the backup location?

- A. netstat
- B. traceroute
- C. route
- D. dig
- E. ifconfig

Answer: B

NEW QUESTION 164

- (Exam Topic 1)

An administrator wants to implement an additional authentication factor to the remote SSH servers. Which of the following accomplishes this goal with the principle of *something you have*?

- A. Certificate
- B. pattern
- C. Password
- D. Fingerprint

Answer: A

NEW QUESTION 169

- (Exam Topic 1)

Which of the following protocols authenticates a PC to the server using a ticket issued to it by the authentication service?

- A. Kerberos
- B. RADIUS
- C. TACACS+
- D. LDAP

Answer: A

NEW QUESTION 170

- (Exam Topic 1)

A network administrator gets a call regarding intermittent network outages across the country. Which of the following should be used to connect to the network so the administrator can troubleshoot this issue from home? (Choose two.)

- A. FTP
- B. SMTP
- C. VPN
- D. SSH
- E. SNMP

Answer: CD

NEW QUESTION 172

- (Exam Topic 1)

A network technician notices the site-to-site VPN and Internet connection have not come back up at a branch office after a recent power outage. Which of the following is an out-of-band method the technician would MOST likely utilize to check the branch office's router status?

- A. Use a modem to console into the router
- B. Walk a user through troubleshooting the connection
- C. Travel to the branch office
- D. Hire a contractor to go on-site

Answer: A

NEW QUESTION 174

- (Exam Topic 1)

A technician is responsible for configuring a new firewall. The hardware team has already installed, powered, and connected the system. Which of the following types of documentation should the technician utilize to complete the task?

- A. Rack diagram
- B. IDF/MDF documentation
- C. Network performance baseline
- D. Logical and physical diagrams

Answer: D

NEW QUESTION 179

- (Exam Topic 1)

Which of the following MUST be implemented to share metrics between routing protocols within the same router?

- A. Routing loop
- B. Routing table
- C. Route redistribution
- D. Dynamic routes

Answer: B

NEW QUESTION 180

- (Exam Topic 1)

Which of the following is the number of broadcast domain that are created when using an unmanaged 12-port switch?

- A. 1
- B. 2
- C. 6
- D. 12

Answer: B

NEW QUESTION 183

- (Exam Topic 1)

A network technician is diagnosing a time-out issue generated from an end user's web browser. The web browser issues standard HTTP get and post commands to interact with the website. Given this information, the technician would like to analyze the entire TCP handshake of the HTTP requests offline. Which of the following tools would allow the technician to view the handshake?

- A. Packet analyzer
- B. Port analyzer
- C. SNMP traps
- D. Spectrum analyzer

Answer: A

NEW QUESTION 184

- (Exam Topic 1)

Which of the following ports should a network technician open on a firewall to back up the configuration and operating system files of a router to a remote server using the FASTES method possible?

- A. UDP port 22
- B. TCP port 22
- C. TCP port 25
- D. UDP port 53
- E. UDP port 69

Answer: E

NEW QUESTION 186

- (Exam Topic 1)

Which of the following security mechanisms dynamically assigns a Layer 2 address and restricts traffic only to that Layer 2 address?

- A. Sticky MAC
- B. 802.1x
- C. ACL
- D. NAC

Answer: A

NEW QUESTION 190

- (Exam Topic 1)

An office network consists of one two-port router connected to a 12-port switch. A four-port hub is also connected to the switch. On this particular network, which of the following is the number of collision domain that exist?

- A. 3
- B. 12
- C. 13
- D. 14
- E. 15

Answer: D

NEW QUESTION 193

- (Exam Topic 1)

A network administrator configures a router with the following IP address information: Gigabit Ethernet 1 Interface: 10.10.0.1/24

Serial 0 Interface: 10.10.0.253/30

Clients are connected to a switch on the gigabit Ethernet interface; the ISP is connected to the Serial 0 interface. When the router configuration is complete and client devices are reconfigured, all clients report that they are unable to connect to the Internet. Which of the following is the MOST likely reason?

- A. The router was configured with an incorrect IP address
- B. The router was configured with an incorrect default gateway
- C. The router was configured with an incorrect subnet mask
- D. The router was configured with an incorrect loopback address

Answer: C

NEW QUESTION 194

- (Exam Topic 1)

The Chief Information Officer (CIO) has noticed the corporate wireless signal is available in the parking lot. Management requests that the wireless network be changed so it is no longer accessible in public areas, without affecting the availability inside the building. Which of the following should be changed on the

network?

- A. Power levels
- B. Overcapacity
- C. Distance limitations
- D. Channel overlap

Answer: A

NEW QUESTION 198

- (Exam Topic 1)

A junior network technician is working in the field and needs to connect to the company/s remote server, however, doing so will require the junior technician to use the public Internet. Because security is a concern which of the following is the BEST method to use?

- A. Telnet
- B. SSH
- C. SFTP
- D. VNC

Answer: B

NEW QUESTION 202

- (Exam Topic 1)

A network administrator has a monitoring system in place that is currently polling hundreds of network devices at regular intervals. The continuous polling is causing high CPU utilization on the server. Which of the following tasks should the administrator perform to resolve the CPU issue while maintaining full monitoring capabilities?

- A. Remove SNMP polling and configure SNMP traps on each network device
- B. Remove SNMP polling and implement snmpwalk on each network device
- C. Upgrade SNMP to the latest version to mitigate vulnerabilities
- D. Modify SNMP polling to poll only during business hours

Answer: A

NEW QUESTION 206

- (Exam Topic 1)

Which of the following WAN technologies utilizes the concept of virtual circuits and point-multipoint connections?

- A. ISDN
- B. MPLS
- C. PRI
- D. Broadband cable
- E. Frame relay

Answer: E

NEW QUESTION 210

- (Exam Topic 1)

Which of the following provides two factor authentication?

- A. Username+ password
- B. Smartcard +PIN
- C. Fingerprint +retina scan
- D. Key fob +ID card

Answer: B

NEW QUESTION 213

- (Exam Topic 1)

Ann, a network technician, has just installed a fiber switch in a datacenter. To run the fiber cabling, Ann plans the cable route over the top of the rack using the cable trays, down to the switch, coiling up any excess cable. As Ann configures the switch, she notices several messages in the logging buffer stating the receive signal of the SFP is too weak. Which of the following is MOST likely the cause of the errors in the logging buffer?

- A. Bend radius exceeded
- B. Fiber cable mismatch
- C. Fiber type mismatch
- D. Bad fiber switch

Answer: A

NEW QUESTION 217

- (Exam Topic 1)

A technician is trying to determine the IP address of a customer's router. The customer has an IP address of 192.168.1.55/24. Which of the following is the address of the customer's router?

- A. 192.168.0.55
- B. 192.168.1.0

- C. 192.168.1.1
- D. 192.168.5.5
- E. 255.255.255.0

Answer: C

NEW QUESTION 220

- (Exam Topic 1)

Which of the following protocols do MOST MITM attacks utilize?

- A. ARP
- B. SIP
- C. FTP
- D. SCP

Answer: A

NEW QUESTION 225

- (Exam Topic 1)

A small business developed an in-house application that is very sensitive to network latency when a communicating between servers. Due to a lack of funds, the business had to build its own network for workstations and servers. Now a network administrator must redesign the network due to performance issues with the application. Which of the following would be the MOST cost effective for the administrator to recommend?

- A. Create Ethernet VLANs
- B. Disable autonegotiation on the servers
- C. Install 10Gb Ethernet NICs in the servers
- D. Install Fibre Channel for the server network

Answer: C

NEW QUESTION 230

- (Exam Topic 1)

A small town is attempting to attract tourists who visit larger nearby cities. A network engineer is asked to implement a network encompassing the five-block town center and nearby businesses. The inclusion of smartphones and portable devices is crucial to the plan. Which of the following is the network engineer being asked to implement?

- A. LAN
- B. PAN
- C. MAN
- D. WAN

Answer: C

NEW QUESTION 232

- (Exam Topic 1)

A technician wants to prevent an unauthorized host from connecting to the network via Ethernet. Which of the following is a Layer 2 access control the technician should implement?

- A. Access control lists
- B. Captive portal
- C. WPA2
- D. Port security

Answer: D

NEW QUESTION 234

- (Exam Topic 1)

A network technician needs to install a new access switch. After installing the new switch, the technician beings to move connections from the old switch to the new switch. The old switch used a GBIC connectors, and the new switch uses an SEF LC with LC connectors. After connecting the SC connector to the SC-to-LC adapter abd plugging it to the switch, the link does not come up as expected. Which of the following should a network technician perform NEXT?

- A. Replace SEP with a new one.
- B. Fall back to the switch.
- C. Transpose the fiber pairs.
- D. Replace multimode with single-mode cable

Answer: C

NEW QUESTION 235

- (Exam Topic 1)

As part of a transition from a static to a dynamic routing protocol on an organization's internal network, the routing protocol must support IPv4 and VLSM. Based on those requirements, which of the following should the network administrator use? (Choose two.)

- A. OSPF
- B. IS-IS
- C. RIPv1
- D. BGP

E. VRRP

Answer: AB

NEW QUESTION 237

- (Exam Topic 1)

Which of the following are DNS record type? (Select THREE).

- A. CNAME
- B. NTP
- C. PTR
- D. LDAP
- E. DHCP
- F. TTL
- G. SRV
- H. SSH

Answer: ACG

NEW QUESTION 241

- (Exam Topic 1)

Which of the following is used to classify network data for the purpose of providing QoS?

- A. STP
- B. VLANs
- C. SIP
- D. DSCP

Answer: D

NEW QUESTION 246

- (Exam Topic 1)

Which of the following VPN protocols establishes a secure session that can be initiated using a browser?

- A. IPSec
- B. SSL VPN
- C. PTP
- D. PPTP

Answer: B

NEW QUESTION 250

- (Exam Topic 1)

A network administrator is assigned to run and connect a Cat 6e Ethernet cable between two nodes in a datacenter. Which of the following connector types should the network administrator use to terminate this cable?

- A. DB-9
- B. RS-232
- C. DB-25
- D. RJ-45

Answer: D

NEW QUESTION 252

- (Exam Topic 1)

A network technician performs a wireless site survey at a company building and identifies that the cafeteria is not covered by a wireless signal. The cafeteria is located in a medium-size, square-shaped room. Which of the following types of WAP antenna should the technician install in the center of the cafeteria to provide the BEST coverage?

- A. Unidirectional
- B. Parabolic
- C. Omnidirectional
- D. Yagi

Answer: C

NEW QUESTION 255

- (Exam Topic 1)

A telecommunications provider has just deployed a new OC-12 circuit at a customer site. While the circuit showed no errors from the provider end to the customer's demarcation point, a network administrator is trying to determine the cause of dropped packets and errors on the circuit. Which of the following should the network administrator do to rule out any problems at Layer 1? (Choose two.)

- A. Use a loopback at the demark and router, and check for a link light
- B. Use an OTDR to validate the cable integrity
- C. Use a pinout tester to validate the cable integrity
- D. Use a multimeter to validate the cable integrity
- E. Check for any devices that may be causing EMI on the cable

F. Clean the cables to be sure they are free of dust and debris

Answer: AB

NEW QUESTION 260

- (Exam Topic 1)

A network engineer is configuring wireless access for guests at an organization. Access to other areas in the organization should not be accessible to guests. Which of the following represents the MOST secure method to configure guest access to the wireless network?

- A. Guests should log into a separate wireless network using a captive portal
- B. Guests should log into the current wireless network using credentials obtained upon entering the facility
- C. The existing wireless network should be configured to allow guest access
- D. An additional wireless network should be configured to allow guest access

Answer: A

NEW QUESTION 262

- (Exam Topic 1)

A technician is setting up a branch office on a point-to-point connection. Which of the following IP network blocks is the MOST efficient use of IP address space for the router connections between the two sites?

- A. /24
- B. /25
- C. /30
- D. /32

Answer: C

NEW QUESTION 267

- (Exam Topic 1)

A switch has detected duplicate broadcast messages sourced from a second port. The broadcasts continue to be transmitted and duplicated until the amount of traffic causes severe performance issues. Which of the following should be configured to prevent this behavior?

- A. BPDU guard
- B. DHCP snooping
- C. ARP protection
- D. Spanning tree

Answer: D

NEW QUESTION 271

- (Exam Topic 1)

A building is equipped with light sensors that turn off the fluorescent lights when natural light is above a certain brightness. Users report experiencing network connection issues only during certain hours. The west side of the building experiences connectivity issues in the morning hours and the east side near the end of the day. At night the connectivity issues affect the entire building. Which of the following could be the cause of the connectivity issues?

- A. Light sensors are interfering with the network
- B. EMI from the lights is interfering with the network cables
- C. Network wiring is run perpendicular to electrical conduit
- D. Temperature changes are causing attenuation in copper cabling

Answer: C

NEW QUESTION 273

- (Exam Topic 1)

A network administrator needs to transmit traffic to geographically diverse sites to improve performance. Which of the following devices would BEST direct traffic to the remote sites?

- A. Hub
- B. Bridge
- C. Switch
- D. Router

Answer: D

NEW QUESTION 275

- (Exam Topic 1)

A user reports difficulties connecting a PC to a wired network. The PC connects to an IP phone, which is working correctly. A network technician can verify that other devices successfully connect to the phone. At which of the following layers of the OSI model is the problem MOST likely located?

- A. Network
- B. Physical
- C. Transport
- D. Application

Answer: A

NEW QUESTION 277

- (Exam Topic 1)

Which of the following WAN technologies provides a guaranteed throughput rate?

- A. DSL
- B. T-1
- C. Cable broadband
- D. Dial-up

Answer: B

NEW QUESTION 281

- (Exam Topic 1)

A technician is trying to configure a previously owned WAP. The technician successfully logs into the administrative console and attempts to input the IP address on the WAP. However, the WAP is not accepting the command. Which of the following is causing the problem?

- A. The WAP antenna is damaged
- B. The WAP transmitter light is dim
- C. The terminal emulation software is misconfigured
- D. The LWAPP image is installed on the WAP

Answer: C

NEW QUESTION 285

- (Exam Topic 1)

Joe, an employee at a large regional bank, wants to receive company email on his personal smartphone and table: To authenticate on the mail server, he must first a custom security application on those mobile services. Which of the following policies would BEST enforce this requirement?

- A. Incident response policy
- B. BYOD policy
- C. DLP policy
- D. Remote access policy

Answer: B

NEW QUESTION 286

- (Exam Topic 1)

A technician has been alerted of incoming HTTP traffic on the LAN segment that should not contain any web server's The technician has the IP address of the destination host and wants to determine if the socket for HTTP is open. Which of the following should the technician perform?

- A. Baseline assessment
- B. packet analysis
- C. portscan
- D. Patch-level assessment.

Answer: C

NEW QUESTION 288

- (Exam Topic 1)

A technician logs onto a system using Telnet because SSH is unavailable. SSH is enabled on the target device, and access is allowed from all subnets. The technician discovers a critical step was missed. Which of the following would allow SSH to function properly?

- A. Perform file hashing
- B. Generate new keys
- C. Update firmware
- D. Change default credentials

Answer: B

NEW QUESTION 291

- (Exam Topic 1)

A network technician has created a network that consists of a router, a firewall, a switch, and several PCs. Which of the following physical network topologies was created?

- A. Star
- B. Mesh
- C. Ring
- D. Bus

Answer: D

NEW QUESTION 292

- (Exam Topic 1)

Which of the following is the SHORTEST way to write 2001:0000:0d58:0000:0000:0095:7565:0001 in proper IPv6 shorthand?

- A. 2001::d58::95:7565:1
- B. 2001:0:d58:0:0:95:7565:1

- C. 2001:0:d58::95:7565:1
- D. 2001:0:0d58::95:7565:1

Answer: C

NEW QUESTION 296

- (Exam Topic 1)

An engineer is reviewing the implementation requirements for an upcoming project. The basic requirements identified by the customer include the following:

- ▶ WLAN architecture supporting speeds in excess of 150 Mbps
- ▶ Clientless remote network access
- ▶ Port-based network access control

Which of the following solution sets properly addresses all of the identified requirements?

- A. 802.11a, IPSec VPN, 802.1x
- B. 802.11ac, MPLS, 802.3
- C. 802.11b, PPTP, 802.1x
- D. 802.11g, MS-CHAP, 802.16
- E. 802.11n, SSL-VPN, 802.1x

Answer: E

NEW QUESTION 298

- (Exam Topic 1)

A technician is connecting a router directly to a PC using the G1/0/1 interface. Without the use of auto-sensing ports, which of the following cables should be used?

- A. Straight-through
- B. Console
- C. Rollover
- D. Crossover

Answer: D

NEW QUESTION 301

- (Exam Topic 1)

A company is allowing its employees to use their personal computers, tables, and IoT devices while at work. However, there are rules and guidelines to which employees must adhere. Which of the following documents applies to these employees?

- A. NDA
- B. SOP
- C. BYOD
- D. SLA

Answer: C

NEW QUESTION 303

- (Exam Topic 1)

A security guard notices an unauthorized individual, who is dressed like technician, has entered a secure area of the hospital with a large group. Which of the following security attacks is taking place?

- A. Evil twin
- B. Social engineering
- C. Insider threat
- D. Phishing

Answer: B

Explanation:

Social engineering attacks aren't considered hacking—at least in the classic sense of the word—although the goals are the same. Social engineering is where people attack an organization through the people in the organization or physically access the organization to get the information they need.

NEW QUESTION 305

- (Exam Topic 1)

Which of the following devices, if implemented, would result in decreased administration time of an 802.11 network running centralized authentication services? (Choose two.)

- A. VPN concentrator
- B. Proxy server
- C. Wireless controller
- D. RADIUS server
- E. Multilayer switch

Answer: CD

NEW QUESTION 307

- (Exam Topic 1)

A customer cannot access a company's secure website. The company's network security is reviewing the firewall for the server and finds the following output:

Time	Action	Src IP	Src Port	Dst IP	Dst Port
0902	Allow	12.73.15.5	31865	10.5.0.10	80
1005	Deny	12.73.15.5	31866	10.5.0.10	443
1006	Deny	12.73.15.5	31890	10.5.0.10	443

Which of the following changes should be made to allow all customers to access the company's secure website?

- A. Allow any any 10.5.0.10 443
- B. Allow any any 12.73.15.5 443
- C. Allow 10.5.0.10 443 any any
- D. Allow 10.5.0.10 any 10.5.0.10 80

Answer: C

NEW QUESTION 312

- (Exam Topic 1)

A user reports that a laptop cannot connect to the Internet despite the fact the wireless Internet was functioning on it yesterday. The user did not modify the laptop in any way, and the wireless Internet is functional on other users' laptops. Which of the following issues should be reviewed to help the user to connect to the wireless network?

- A. Wireless switch toggled off
- B. WAP settings
- C. WLAN IP address out of scope
- D. Wireless controller misconfiguration

Answer: A

NEW QUESTION 313

- (Exam Topic 1)

Users are reporting their network is extremely slow. The technician discovers pings to external host have excessive response times. However, internal pings to printers and other PCs have acceptable response times. Which of the following steps should the technician take NEXT?

- A. Determine if any network equipment was replaced recently
- B. Verify malware has not disabled the users' PC firewalls
- C. Replace users' network cables with known-good network cables
- D. Power cycle the web server

Answer: A

NEW QUESTION 314

- (Exam Topic 1)

Users in a school lab are reporting slow connections to the servers and the Internet. Other users in the school have no issues. The lab has 25 computers and is connected with a single 1Gb Ethernet connection on Cat 5e wiring to an unmanaged switch. There are also three spare Cat 5e cable runs, which are not in use. The school wants to double the connection speed between the lab and the servers without running new cables. Which of the following would be the BEST solution?

- A. Plug in a second spare cable at each end to double the speed.
- B. Replace the switches with ones that utilize port bonding and use the spare cables.
- C. Replace the switches with 10Gb switches and utilize the existing cabling.
- D. Plug in a second cable and set one port to TX and one port to RX.

Answer: B

NEW QUESTION 319

- (Exam Topic 1)

A technician is setting up VoIP phones on a wireless network. Users report that calls are choppy and sometimes dropped. The technician has measured two characteristics using simple command-line tools that verify the problem. Which of the following characteristics did the technician measure? (Choose two.)

- A. Reflection
- B. Latency
- C. Interference
- D. Packet loss
- E. Signal-to-noise ratio
- F. Attenuation

Answer: BD

NEW QUESTION 323

- (Exam Topic 1)

A network engineer wants to segment the network into multiple broadcast domains. Which of the following devices would allow for communication between the segments?

- A. Layer 2 switch
- B. Layer 3 switch
- C. Bridge
- D. Load balancer

Answer: B

NEW QUESTION 324

- (Exam Topic 1)

A technician has racked a new access switch and has run multimode fiber to a new location. After installing an extended-range 10Gb SFP in the core switch, the technician installed a 10Gb SFP in the access switch and connected the port to the new extension with a fiber jumper. However, the link does not display, and the technician cannot see light emitting from the core switch. Which of the following solutions is MOST likely to resolve the problem?

- A. Swap the fiber pairs in one of the SFPs
- B. Replace the jumpers with single-mode fiber
- C. Set the correct MTU on the new interface
- D. Install an optic that matches the fiber type

Answer: B

NEW QUESTION 327

- (Exam Topic 1)

An administrator is moving to a new office. There will be several network runs through the ceiling area of the office. Which of the following is the BEST to utilize in these areas?

- A. Single-mode fiber-optic cabling
- B. Cat 5e-rated cabling
- C. Cat 6-rated cabling
- D. Plenum-rated cabling

Answer: D

NEW QUESTION 329

- (Exam Topic 1)

Which of the following physical security controls is MOST likely to be susceptible to a false positive?

- A. Identification card
- B. Biometric device
- C. Proximity reader
- D. Video camera

Answer: C

NEW QUESTION 330

- (Exam Topic 1)

A network technician is building a network for a small office. The office currently has cable TV and now requires access to the Internet without adding any cabling other than what is already in place. Which of the following solutions should the technician install to meet these requirements?

- A. DOCSIS modem
- B. Wireless router
- C. DSL modem
- D. Access point

Answer: A

NEW QUESTION 331

- (Exam Topic 1)

A web application is unable to authenticate customers so they can access their bills. The server administrator has tested the LDAP query but is not receiving results. Which of the following is the NEXT step the server administrator should take to correct the problem?

- A. Check port 636 to see if it being blocked.
- B. Change service port 636 to port 389.
- C. Restart the web server.
- D. Verify the browser is using port 443.

Answer: A

NEW QUESTION 336

- (Exam Topic 2)

Which of the following default ports would need to be disabled to block TFTP traffic?

- A. 20
- B. 21
- C. 69
- D. 123

Answer: C

NEW QUESTION 340

- (Exam Topic 2)

Tenants access multiple wireless networks in a building. Users report intermittent connectivity. Which of the following is the MOST likely cause of the problem?

- A. The channels are overlapping with other wireless networks and should be changed.

- B. The SSIDs are incompatible and should be renamed.
- C. The users have incompatible wireless network cards and should upgrade.
- D. The default idle period for logoff is too short and should be changed to a longer limit.

Answer: A

NEW QUESTION 343

- (Exam Topic 2)

Which of the following uses port 53 by default?

- A. RDP
- B. QoS
- C. DHCP
- D. DNS

Answer: D

NEW QUESTION 346

- (Exam Topic 2)

Lisa, a technician, is asked to not allow FTP traffic on a network. Which of the following ports should be blocked on the firewall to achieve this?

- A. 21
- B. 22
- C. 23
- D. 25

Answer: A

NEW QUESTION 349

- (Exam Topic 2)

Which of the following ports is the default telnet port?

- A. 20
- B. 21
- C. 22
- D. 23

Answer: D

NEW QUESTION 354

- (Exam Topic 2)

Which of the following connector types would Sandy, a network technician, use to connect a serial cable?

- A. RJ-11
- B. BNC
- C. LC
- D. DB-9

Answer: D

NEW QUESTION 358

- (Exam Topic 2)

Which of the following mediums is circuit switched?

- A. PSTN
- B. ATM
- C. Frame relay
- D. MPLS

Answer: A

NEW QUESTION 359

- (Exam Topic 2)

Which of the following cable types have a rated MAXIMUM bandwidth of 100Mbps?

- A. CAT3
- B. CAT5
- C. CAT5e
- D. CAT6

Answer: B

NEW QUESTION 360

- (Exam Topic 2)

Which of the following is true about tunneling and encryption?

- A. SIP encrypts all data going through the tunnel.
- B. PPTP creates a secure tunnel.
- C. SSL VPN provides a secure tunnel.
- D. RAS is a secure way to create a tunnel.

Answer: C

NEW QUESTION 362

- (Exam Topic 2)

Which of the following default ports would need to be open on a firewall to allow remote desktop access?

- A. 143
- B. 443
- C. 3389
- D. 8080

Answer: C

NEW QUESTION 365

- (Exam Topic 2)

Which of the following is a secure way to connect to a device?

- A. RSH
- B. TFTP
- C. SNMPv2
- D. SFTP

Answer: D

NEW QUESTION 366

- (Exam Topic 2)

A workstation on the network is configured as follows. A user reports that they are unable to print to a device located on a different subnet. Which of the following is the MOST likely problem?

IP address: 172.16.204.12
Subnet Mask: 255.255.0.0
Default Gateway: 172.15.204.254
DNS address: 172.16.204.1
Broadcast address: 172.16.255.255

- A. DNS address
- B. Subnet mask
- C. Default gateway
- D. Broadcast address
- E. IP address

Answer: C

NEW QUESTION 369

- (Exam Topic 2)

A company has installed an access point and configured it to broadcast at 802.11n only. Some users are stating that they cannot connect to this access point.

Which of the following is the MOST likely reason some users cannot connect?

- A. Incorrect channel
- B. Weak encryption
- C. Incompatible NICs
- D. Incorrect SSID

Answer: C

NEW QUESTION 374

- (Exam Topic 2)

A company wants to only allow incoming HTTP and HTTPS traffic on their public wireless network. Which of the following port numbers should be the only allowed open ports on the firewall to accomplish this? (Select TWO).

- A. 20
- B. 80
- C. 143
- D. 443
- E. 8080

Answer: BD

NEW QUESTION 375

- (Exam Topic 2)

Which of the following provides the use of a secure tunnel for telecommuting without manually installing and configuring encryption software?

- A. RDP

- B. SSL VPN
- C. ISAKMP
- D. TLS 2.0

Answer: B

NEW QUESTION 380

- (Exam Topic 2)

Which of the following are network topologies? (Select TWO).

- A. Ethernet
- B. Duplex
- C. Star
- D. Circular
- E. Bus

Answer: CE

NEW QUESTION 385

- (Exam Topic 2)

Which of the following BEST describes how a layer 2 switch functions?

- A. Switches packets within the same subnet based on MAC addresses
- B. Switches packets between different subnets based on IP addresses
- C. Switches packets between different subnets based on MAC addresses
- D. Switches packets between different subnets based on MAC addresses

Answer: A

NEW QUESTION 387

- (Exam Topic 2)

Jeff, a network engineer, is troubleshooting an issue where clients are not receiving IP addresses from a new, properly configured DHCP server on another subnet. Statically addressed clients can get onto the same network with no issues. Which of the following is causing the issue?

- A. Incorrect VLAN tagging
- B. Missing helper addresses
- C. Wrong default gateway
- D. Improper routing protocols

Answer: B

NEW QUESTION 389

- (Exam Topic 2)

Which of the following protocols is used to transmit outgoing email?

- A. RDP
- B. NTP
- C. POP3
- D. SMTP

Answer: D

NEW QUESTION 393

- (Exam Topic 2)

In order to reduce spam email, Kim, a network administrator, changes the standard SMTP port from which of the following port numbers to port number 587?

- A. 20
- B. 21
- C. 23
- D. 25

Answer: D

NEW QUESTION 395

- (Exam Topic 2)

Lisa, a network administrator, needs to allow all websites to be accessible by the sales team for business purposes. Which of the following ports need to be enabled on the firewall? (Select TWO).

- A. 23
- B. 25
- C. 53
- D. 80
- E. 443

Answer: DE

NEW QUESTION 398

- (Exam Topic 2)

Which of the following uses eight groups of characters for addressing?

- A. MAC
- B. IPv4
- C. IPv6
- D. DHCP

Answer: C

NEW QUESTION 401

- (Exam Topic 2)

Kurt, a network technician, has configured a new firewall on the network. Users are reporting errors when attempting to access several websites. Kurt attempts to access several popular websites with no errors, however, he does receive an error when attempting to access a bank website. Which of the following rules would BEST allow access to the bank website?

- A. Allow UDP port 53
- B. Allow TCP port 80
- C. Allow UDP port 340
- D. Allow TCP port 443

Answer: D

NEW QUESTION 405

- (Exam Topic 2)

Which of the following defines an IP address that is NOT routed on the Internet?

- A. Multicast
- B. Public
- C. Private
- D. Classful

Answer: C

NEW QUESTION 408

- (Exam Topic 2)

Which of the following operates at OSI layer 2 to forward traffic based on the MAC address?

- A. Switch
- B. Proxy Server
- C. Router
- D. VPN Concentrator

Answer: A

NEW QUESTION 410

- (Exam Topic 2)

Privilege creep among long-term employees can be mitigated by which of the following procedures?

- A. User permission reviews
- B. Mandatory vacations
- C. Separation of duties
- D. Job function rotation

Answer: A

NEW QUESTION 412

- (Exam Topic 2)

An organization recently installed a firewall on the network. Employees must have access to their work computer from their home computer. In which of the following ways should the firewall be configured?

- A. Allow TCP port 3389 outbound
- B. Allow UDP port 3389 inbound
- C. Allow UDP port 3389 outbound
- D. Allow TCP port 3389 inbound

Answer: D

NEW QUESTION 416

- (Exam Topic 2)

A technician is troubleshooting a problem with a network printer. The technician thinks the network printer is out of paper and ink. Which of the following should the technician do NEXT?

- A. Implement the solution
- B. Question users
- C. Test the theory

D. Escalate the problem

Answer: C

NEW QUESTION 417

- (Exam Topic 2)

Which of the following defines when Pete, an attacker, attempts to monitor wireless traffic in order to perform malicious activities?

- A. XSS
- B. SQL injection
- C. Directory traversal
- D. Packet sniffing

Answer: D

NEW QUESTION 420

- (Exam Topic 2)

Which of the following routing protocols relies on hop count as its ONLY metric?

- A. BGP
- B. EIGRP
- C. OSPF
- D. RIP

Answer: D

NEW QUESTION 424

- (Exam Topic 2)

Which of the following MUST be used when securing a VoIP network consisting of private IP addresses?

- A. IPS
- B. Application layer firewall
- C. IDS
- D. An unmanaged switch

Answer: B

NEW QUESTION 429

- (Exam Topic 2)

Which of the following wireless standards is capable of ONLY operating on 5.8GHz?

- A. 802.11a
- B. 802.11b
- C. 802.11g
- D. 802.11n

Answer: A

NEW QUESTION 430

- (Exam Topic 2)

A user is unable to open up websites on the Internet from a browser. The administrator determines that the workstation can ping its local gateway, but not the remote web server. At which of the following layers of the OSI model does the problem MOST likely exist?

- A. Data link
- B. Network
- C. Session
- D. Physical

Answer: B

NEW QUESTION 434

- (Exam Topic 2)

An organization has installed a new firewall. Users need to have access to remote websites and must be able to use SSH to retrieve files from remote locations. Which of the following actions should be taken on the new firewall? (Select TWO).

- A. Allow UDP port 21 outbound
- B. Allow UDP port 22 outbound
- C. Allow UDP port 80 outbound
- D. Allow TCP port 21 outbound
- E. Allow TCP port 22 outbound
- F. Allow TCP port 80 outbound

Answer: EF

NEW QUESTION 435

- (Exam Topic 2)

Which of the following is indicative of an FTP bounce?

- A. Arbitrary IP address
- B. Reverse DNS lookups
- C. Same Port Number
- D. File Transfer Success

Answer: A

NEW QUESTION 440

- (Exam Topic 2)

Which of the following functions would be used to securely monitor and actively manage external connections?

- A. VPN concentrator
- B. HIDS
- C. Load balancer
- D. Packet shaper

Answer: A

NEW QUESTION 441

- (Exam Topic 2)

Which of the following is the default subnet mask for a Class B address?

- A. 255.0.0.0
- B. 255.255.0.0
- C. 255.255.255.0
- D. 255.255.255.255

Answer: B

NEW QUESTION 445

- (Exam Topic 2)

Which of the following access controls enforces permissions based on data labeling at specific levels?

- A. Mandatory access control
- B. Separation of duties access control
- C. Discretionary access control
- D. Role based access control

Answer: A

NEW QUESTION 448

- (Exam Topic 2)

Which of the following is used to provide hot standby capabilities using paired routers?

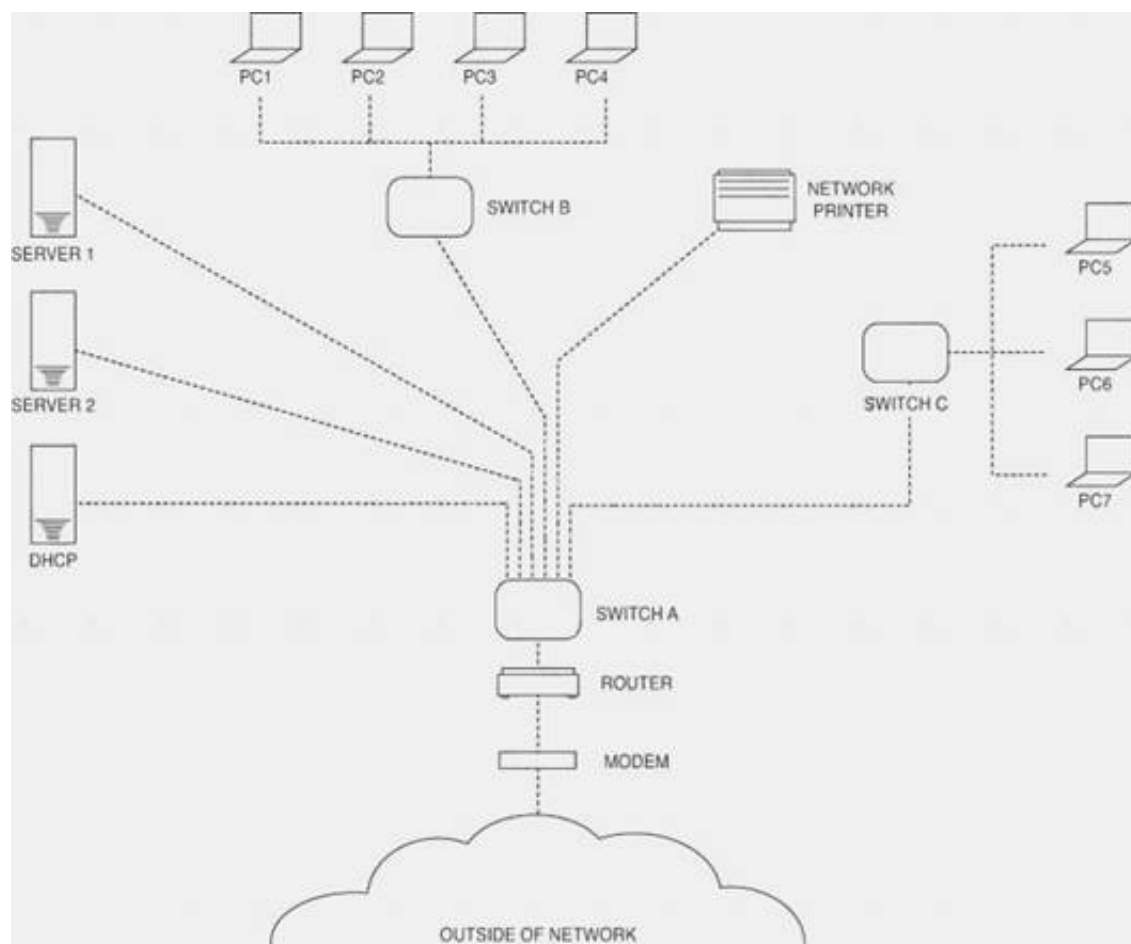
- A. CARP
- B. L2TP
- C. PTPP
- D. ISAKMP

Answer: A

NEW QUESTION 450

- (Exam Topic 2)

Please refer to the attached exhibit. Which of the following types of configuration management documentation is represented?



- A. Network security policy
- B. Network baseline
- C. Logical network diagram
- D. Wiring schematic

Answer: C

NEW QUESTION 455

- (Exam Topic 2)

Which of the following default services uses TCP/UDP port 88?

- A. LDAP
- B. IGMP
- C. HTTP
- D. Kerberos

Answer: D

NEW QUESTION 458

- (Exam Topic 2)

Which of the following MUST be kept synchronized in order for Kerberos to work?

- A. Certificate
- B. Ticket
- C. Time
- D. Token

Answer: C

NEW QUESTION 459

- (Exam Topic 2)

Which of the following allows a central point to simultaneously address other points without addressing all of them?

- A. Multicast
- B. Subnetting
- C. Unicast
- D. Broadcast

Answer: A

NEW QUESTION 462

- (Exam Topic 2)

Which of the following WAP security features offers the STRONGEST encryption?

- A. WPA
- B. WPA2
- C. WEP
- D. Hidden SSID

Answer: B

NEW QUESTION 465

- (Exam Topic 2)

A user is unable to print to a network printer. Which of following is the FIRST step that a technician should take to troubleshoot the issue?

- A. Identify the problem.
- B. Establish a plan of action to resolve the problem.
- C. Establish a theory of probable cause.
- D. Implement preventative measures.

Answer: A

NEW QUESTION 469

- (Exam Topic 2)

Which of the following devices exist as either hardware or software to assist in routing traffic? (Select TWO).

- A. Cable modem
- B. Layer 2 switch
- C. Router
- D. NIDS
- E. Layer 3 switch

Answer: CE

NEW QUESTION 473

- (Exam Topic 2)

Which of the following specifications would Sara, an administrator, implement as a network access control?

- A. 802.1q
- B. 802.3
- C. 802.11n
- D. 802.1x

Answer: D

NEW QUESTION 478

- (Exam Topic 2)

A new firewall was recently installed blocking SMTP traffic. As a result, no one has Internet access. Which of the following has MOST likely occurred?

- A. Port security is blocking all traffic.
- B. An IDS is blocking all traffic.
- C. Implicit deny is blocking all traffic.
- D. SMTP is blocking all traffic.

Answer: C

NEW QUESTION 481

- (Exam Topic 2)

Which of the following is a routed protocol that functions at layer 3 of the OSI model?

- A. IP
- B. Frame relay
- C. PPP
- D. ADSL

Answer: A

NEW QUESTION 482

- (Exam Topic 2)

Which of the following network topologies allows only communication to take place from one node at a time by passing a token around the network?

- A. Star
- B. Mesh
- C. Bus
- D. Ring

Answer: D

NEW QUESTION 485

- (Exam Topic 2)

A username provides which of the following?

- A. Biometrics
- B. Identification
- C. Authorization
- D. Authentication

Answer: B

NEW QUESTION 488

- (Exam Topic 2)

A technician recently fixed a computer with several viruses and spyware programs on it and notices the Internet settings were set to redirect all traffic through an unknown proxy. This type of attack is known as which of the following?

- A. Phishing
- B. Social engineering
- C. Man-in-the-middle
- D. Shoulder surfing

Answer: C

NEW QUESTION 489

- (Exam Topic 2)

A small office home office (SOHO) customer is going to be replacing their switch. The customer also wants to add a WAP in a dropped ceiling; however, there are no power outlets above the drop ceiling, but there is a CAT5e network jack. Which of the following technologies should the new switch have to allow this WAP to be placed where the customer requests, without any other major changes to the environment?

- A. PoE
- B. Layer 3 switching
- C. STP
- D. VLAN

Answer: A

NEW QUESTION 491

- (Exam Topic 2)

An administrator is replacing an existing WAP because the customer is reporting that the connection speeds are too slow. Which of the following should be installed?

- A. 802.11a
- B. 802.11b
- C. 802.11g
- D. 802.11n

Answer: D

NEW QUESTION 495

- (Exam Topic 2)

Which of the following ports are MOST commonly used to interactively configure a networking device? (Select TWO).

- A. 21
- B. 22
- C. 23
- D. 53
- E. 67

Answer: BC

NEW QUESTION 498

- (Exam Topic 2)

Something you have, something you are, and something you know are the three tenets of:

- A. Social engineering
- B. Change management
- C. Remote access
- D. Access control

Answer: D

NEW QUESTION 501

- (Exam Topic 2)

A technician has replaced the Internet gateway router, and now no users can reach the Internet. The technician can ping the router Ethernet port but not the ISP's router IP address. Which of the following is the MOST likely problem?

- A. Faulty crossover cable
- B. DNS server is down
- C. Switching loop
- D. Outside interface shutdown

Answer: D

NEW QUESTION 502

- (Exam Topic 2)

Which of the following could be used to stop unknown threats?

- A. DMZ
- B. Signature based IPS
- C. Behavior based IPS
- D. Honeypots

Answer: C

NEW QUESTION 504

- (Exam Topic 2)

Which of the following DNS records would allow for a website to have more than one FQDN?

- A. TXT
- B. PTR
- C. MX
- D. CNAME

Answer: D

NEW QUESTION 509

- (Exam Topic 2)

Which of the following would Sandy, a technician, find in a network map?

- A. QoS standards
- B. MDF/IDFs
- C. System logs
- D. Firewall rules

Answer: B

NEW QUESTION 514

- (Exam Topic 2)

Which of the following protocols uses port 3389?

- A. IMAP
- B. DHCP
- C. SSH
- D. RDP

Answer: D

NEW QUESTION 519

- (Exam Topic 2)

A network technician needs to address bandwidth issues on the wireless network. There are currently four 802.11n access points. The technician would like to increase the bandwidth. Which of the following would be the BEST solution?

- A. Disable SSID
- B. Channel bonding
- C. MIMO
- D. Increase the signal

Answer: B

NEW QUESTION 520

- (Exam Topic 3)

A national cable company providing TV, telephone, and Internet service to home users over its IP network, has been tracking a large increase of network bandwidth due to P2P file sharing. Which of the following should the company deploy to ensure excellent TV and telephone service?

- A. QoS
- B. Load balancing
- C. High availability
- D. Fiber optics

Answer: A

NEW QUESTION 525

- (Exam Topic 3)

Which of the following would Kim, a technician, do to monitor remote traffic through an access point?

- A. Enable an SNMP agent
- B. Enable network mapping
- C. Set monitoring SSID
- D. Select WPA2

Answer: A

NEW QUESTION 526

- (Exam Topic 3)

Which of the following protocols is used to securely connect to a multi-layer switch?

- A. HTTP
- B. SMTP
- C. SSH
- D. Telnet

Answer: C

NEW QUESTION 528

- (Exam Topic 3)

Zach, a technician, suspects a duplicate IP address assignment on the network. Which of the following resources can be used to verify this problem?

- A. Network map
- B. Environmental monitor
- C. Placement map
- D. Syslog

Answer: D

NEW QUESTION 530

- (Exam Topic 3)

A network administrator notices that all of the company switches are running at capacity on a given day, which is abnormal according to network baselines taken recently. Which tool would BEST allow the administrator to inspect what type of traffic is on the network?

- A. Wire tap
- B. Network sniffer
- C. Load balancing appliance
- D. NIPS

Answer: B

NEW QUESTION 534

- (Exam Topic 3)

Which of the following problems is MOST likely to arise when configuring an IPv6 over IPv4 tunnel?

- A. Routing loop
- B. MTU black hole
- C. Framing errors
- D. SYN flood

Answer: B

NEW QUESTION 538

- (Exam Topic 3)

A company is experiencing accessibility issues reaching services on a cloud-based system. Which of the following monitoring tools should be used to locate possible outages?

- A. Network analyzer
- B. Packet analyzer
- C. Protocol analyzer
- D. Network sniffer

Answer: A

Explanation:

A network analyzer is a useful tool, helping you do things like track traffic and malicious usage on the network.

NEW QUESTION 543

- (Exam Topic 3)

Which of the following methods for network performance optimization is used to distribute traffic among similar devices?

- A. Fault tolerance
- B. QoS
- C. Proxy server
- D. Load balancing

Answer: D

NEW QUESTION 547

- (Exam Topic 3)

An administrator hosts all of the company's virtual servers internally. In the event of total server failure, the server images can be restored on a cloud provider and accessed through the VPN.

Which of the following cloud services is the administrator using?

- A. Community PaaS
- B. Public IaaS
- C. Hybrid SaaS
- D. Private IaaS

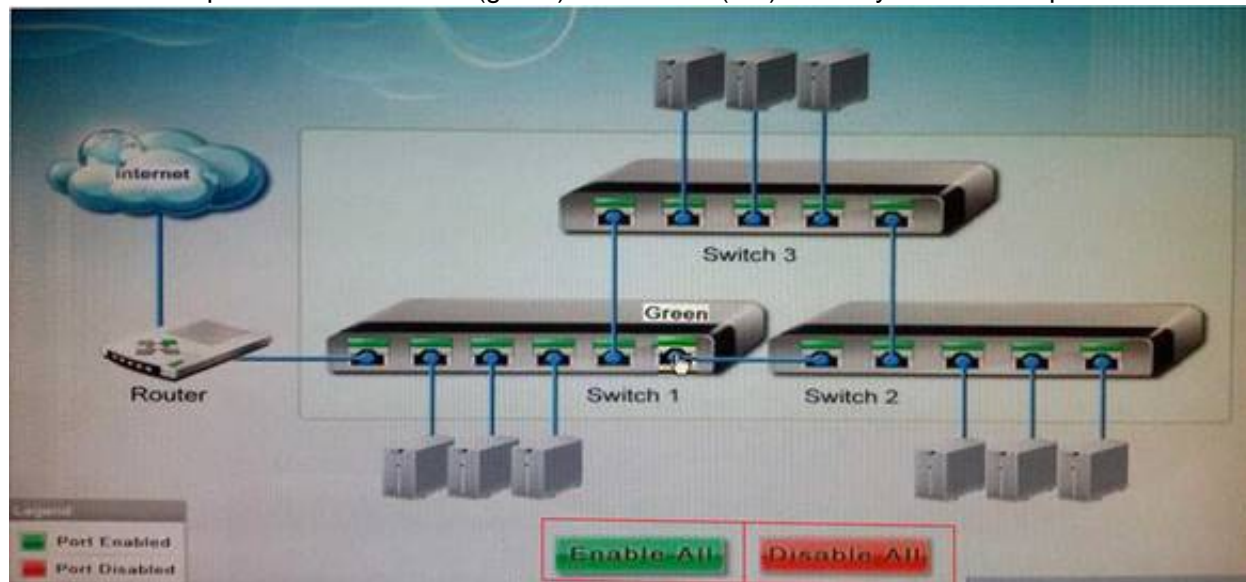
Answer: B

NEW QUESTION 548

- (Exam Topic 3)

Workstations are unable to access the Internet after a recent power outage. Configure the appropriate devices to ensure ALL workstations have Internet connectivity.

Instructions: All ports can be enabled (green) or disabled (red). When you have completed the simulation please select the Done button.



- A. Mastered
- B. Not Mastered

Answer: A

Explanation:

All ports should be enabled.

NEW QUESTION 550

- (Exam Topic 3)

A VoIP system will require 23 concurrent voice channels and signaling channel. Which of the following types of service would provides the BEST connectivity to the PSTN?

- A. PRI
- B. BRI
- C. E1/E3
- D. DSL

Answer: A

NEW QUESTION 554

- (Exam Topic 3)

Which of the following DNS records allows for reverse lookup of a domain?

- A. PTR
- B. AAAA
- C. A
- D. MX

Answer: A

NEW QUESTION 555

- (Exam Topic 3)

Which of the following is an example of two factor authentication?

- A. Password, device certificate and PIN
- B. SSL web server certificate and password
- C. User password and administrator password
- D. Password and hardware token OTP

Answer: D

NEW QUESTION 559

- (Exam Topic 3)

Which of the following devices are MOST often responsible for 1q tagging? (Select TWO).

- A. Switch
- B. Router
- C. IDS
- D. Hub
- E. IPS
- F. Network tap

Answer: AB

NEW QUESTION 563

- (Exam Topic 3)

Which of the following cloud infrastructure designs includes on premise servers utilizing a centralized syslog server that is hosted at a third party organization for review?

- A. Hybrid
- B. Public
- C. Community
- D. Private

Answer: A

NEW QUESTION 566

- (Exam Topic 3)

Zach, a technician, needs to terminate a CAT5e Ethernet cable to a 110 block. Which of the following tools should he use?

- A. Toner probe
- B. Punch down
- C. Wire tester
- D. Crimper

Answer: B

NEW QUESTION 569

- (Exam Topic 3)

A technician wants to connect a new wireless router to a main network switch. Which of the following cable types would MOST likely be used to establish this connection?

- A. Telephone
- B. Parallel
- C. Serial
- D. CAT6

Answer: D

NEW QUESTION 571

- (Exam Topic 3)

A technician needs to verify an Ethernet run is functioning properly. Which of the following tools should be used?

- A. Protocol analyzer
- B. Crimper
- C. Cable tester
- D. Punch down tool

Answer: C

NEW QUESTION 572

- (Exam Topic 3)

An administrator has received a recommendation against deploying WEP as a wireless encryption protection scheme. Which of the following is MOST likely the reason?

- A. WEP's IV is too small.
- B. WEP uses RC4 which is easily accessible and not secure.
- C. WEP uses plain text.
- D. WEP is not well supported.

Answer: A

NEW QUESTION 574

- (Exam Topic 3)

An administrator is setting up a secure wireless network. The administrator decides to support 802.11n and 802.11g with a WPA2 pre-shared key. Users are given the SSID with the pre-shared key, but the administrator has disabled the SSID broadcast and MAC filtering. Some users have reported connection issues. Which of the following would MOST likely resolve the users' connection issues?

- A. Limit the devices to 802.11n only.
- B. Enable the SSID broadcast.
- C. Enable MAC filtering.
- D. Use a WEP 128-bit key.

Answer: B

NEW QUESTION 575

- (Exam Topic 3)

Lisa, an administrator, has set up an 802.11n wireless network. Users with 802.11n laptops have reported that speeds are slow. After testing, Lisa determines that users max out at 802.11g speeds. Which of the following would MOST likely fix this issue?

- A. Enable wireless multimedia (WMM) for QoS
- B. Use the 40MHz channels in the 2.4GHz band
- C. Enable access point antenna isolation
- D. Limit the clients to 802.11g compatible laptops

Answer: A

NEW QUESTION 576

- (Exam Topic 3)

A SOHO with ten Wi-Fi equipped laptops needs a new network installed. Which of the following items would be used to setup the office using a new DSL line? (Select TWO).

- A. Router
- B. Wi-Fi Access point
- C. Cable modem
- D. Ten WiMAX adapters
- E. Ten CAT6 patch cables

Answer: AB

NEW QUESTION 581

- (Exam Topic 3)

A user is getting very weak signals while trying to connect to the wireless. Which of the following should the user do to help with signal strength?

- A. Call the wireless provider and ask for a T3 circuit.
- B. Move the wireless router to a better location where line of sight is obtained.
- C. Reinstall the operating system to the PC to ensure the newest patches are installed.
- D. Install a hub to ensure there is a clear path for the cables to run.

Answer: B

NEW QUESTION 585

- (Exam Topic 3)

When configuring a WAP for a SOHO, which parameter will BEST limit access to the office area?

- A. Signal strength
- B. SSID enable
- C. Encryption
- D. Password hardening

Answer: A

NEW QUESTION 589

- (Exam Topic 3)

A SOHO office recently installed a wireless network for employees to use during lunch breaks. As such, the access point was placed in the kitchen area by the microwave. Employees have been reporting intermittent connectivity when using the wireless network. Which of the following would BEST improve connectivity?

- A. Disable SSID broadcast
- B. Increase the signal strength
- C. Move the access point
- D. Change the broadcast channel

Answer: C

NEW QUESTION 590

- (Exam Topic 3)

Zach, a network technician, is configuring several switches to be managed remotely. Which of the following must be configured to connect via SSH to each of those devices, as well as to retrieve various parameters?

- A. PoE settings and VTP configuration
- B. SNMP configuration only
- C. IP address and SNMP configuration
- D. QoS and PoE settings

Answer: C

NEW QUESTION 591

- (Exam Topic 3)

An analog POTS voice line is no longer working and Kim, the technician, is tasked to verify if a dial tone is present at the IDF. Which of the following tools would be used?

- A. Protocol analyzer
- B. Butt set
- C. OTDR
- D. Toner probe

Answer: B

NEW QUESTION 594

- (Exam Topic 3)

A network technician is troubleshooting intermittent issues with VoIP call quality. A throughput tester can help assess the functionality of which of the following?

- A. LLDP
- B. VLAN tagging
- C. QoS
- D. SIP trunking

Answer: C

NEW QUESTION 595

- (Exam Topic 3)

A network technician wants to baseline traffic flows on a specific network. Which of the following will provide the GREATEST level of detail?

- A. Network flow information
- B. SNMP traps
- C. Debug level syslog
- D. Protocol analyzer

Answer: D

NEW QUESTION 600

- (Exam Topic 3)

A technician replaces a customer's router, and is now unable to ping the ISP's gateway. Which of the following should the technician check?

- A. The arp table of the new customer's router.
- B. The route table of the next-hop router.
- C. The route table of the new customer's router.
- D. The arp table of a network user.

Answer: C

NEW QUESTION 602

- (Exam Topic 3)

A network technician performs several switch commands to enable various advanced features on the switch in the accounting department. During the configuration changes, several users from this department report connectivity issues. Which of the following logs would the network technician need to analyze to troubleshoot the connectivity issues?

- A. Router logs
- B. History logs
- C. Startup/bootup config logs
- D. Event Viewer logs

Answer: B

NEW QUESTION 606

- (Exam Topic 3)

company wants the public to be able to connect to the wireless network with minimal security, but not be able to connect to the private internal network. Which of the following firewall rules would BEST accomplish this?

- A. Content filtering on the wireless access point
- B. Allow traffic from the wireless access point
- C. Block traffic from the wireless access point
- D. Packet filtering on the wireless access point

Answer: C

NEW QUESTION 610

- (Exam Topic 3)

An 801.11g wireless access point was configured as follows:

- AP encryption forced to WPA2-AES mode only
- MAC address filtering enabled with the following MAC address in the allow list: 00-ab-29-da-c3-40 Which is true about the above configuration?

- A. Any 802.11b/g compatible client can connect to the wireless network if they support TKIP, the MAC address is 00-ab-29-da-c3-40, and the encryption key is known by the client.
- B. An 802.11a compatible client can connect to the wireless network only if its MAC address is 00- ab-29-da-c3-40 and the encryption key is known by the client.

- C. An 802.11n compatible client can connect to the wireless network only if its MAC address is 00-ab-29-da-c3-40 and the encryption key is known by the client.
D. Any 802.11g compatible client can connect to the wireless network if the encryption key is known by the client.

Answer: C

NEW QUESTION 611

- (Exam Topic 3)

Which of the following media types can carry a standard Ethernet signal for network connectivity?

- A. USB
B. PArallel
C. Serial
D. CAT6

Answer: D

NEW QUESTION 615

- (Exam Topic 3)

Which of the following technologies allows more than two transceivers with an access point?

- A. MIMO
B. FIFO
C. 802.1x
D. WPA

Answer: A

NEW QUESTION 618

- (Exam Topic 3)

A network technician needs to install an additional access point to the company's wireless network. The network has two 802.11b access points. Which of the following channels should be used to allow the access point's coverage areas to overlap?

- A. 1, 6, 11
B. 2, 5, 10
C. 3, 13, 23
D. 4, 8, 16

Answer: A

NEW QUESTION 619

- (Exam Topic 3)

The network optimization process used to allow reasonable use of data, voice, and video on the same network infrastructure is called:

- A. CARP
B. QoS
C. Traffic shaping.
D. Fault tolerance.

Answer: B

NEW QUESTION 621

- (Exam Topic 3)

Kim, a technician, is installing a switch that does not feature auto-negotiation. Which of the following characteristics would need to be manually configured? (Select TWO).

- A. MAC addressing
B. IP addressing
C. Port speed
D. IPv6 addressing
E. Duplex

Answer: CE

NEW QUESTION 624

- (Exam Topic 3)

Kim, a technician, is configuring an 802.11n access point. Other WAPs on the network use 802.11b. Which of the following will Kim have to setup to make sure these WAPs will be able to communicate?

- A. Enable mixed mode
B. Disable SSID
C. Disable encryption
D. Enable 'n' only mode

Answer: A

NEW QUESTION 626

- (Exam Topic 3)

Which of the following could be used to estimate RTT across a router?

- A. Dig
- B. Traceroute
- C. Arp
- D. Uptime

Answer: B

NEW QUESTION 629

- (Exam Topic 3)

Lisa, a consultant, is inspecting an office that reports frequent wireless issues. Upon scanning the network broadcasting in the vicinity of the office, seven SSIDs are found. The company's Wi-Fi network and three others all share channel six. Which of the following is MOST likely causing the issue?

- A. Frequency interference
- B. Low signal strength
- C. Standard mismatch
- D. Incorrect channel

Answer: A

NEW QUESTION 631

- (Exam Topic 3)

Kim, a network administrator, should consult which documentation sources FIRST to determine the cause of recent network issues?

- A. Network map
- B. Cable management
- C. Change management
- D. Asset management

Answer: C

NEW QUESTION 634

- (Exam Topic 3)

A supervisor requests that a technician downloads a MIB for a particular server. Which of the following protocols requires MIBs?

- A. IPSec
- B. SSL
- C. ISAKMP
- D. SNMP

Answer: D

NEW QUESTION 638

- (Exam Topic 3)

A user reports a network failure on a computer. The technician determines that the computer and NIC are operating properly. Which of the following tools can the technician use to trace the network cabling back to the punch down block?

- A. Protocol analyzer
- B. Multimeter
- C. Punch down tool
- D. Toner probe

Answer: D

NEW QUESTION 640

- (Exam Topic 3)

Two WAPs are positioned with overlapping coverage, but seamless roaming across them is not working. Which of the following should be checked?

- A. WPA should be enabled
- B. PKI should be turned off
- C. WAP SSIDs are matching
- D. WAPs are transmitting on same channel

Answer: C

NEW QUESTION 645

- (Exam Topic 3)

Jeff, a customer, has a wireless network and has reported that the network traffic from the wireless access points seems high compared to the limited number of wireless devices used. Jeff believes that other non-employees are using the wireless network to access the Internet. Which of the following could be used to limit the access to the wireless network? (Select TWO).

- A. WPA encryption
- B. Changing wireless channels
- C. MAC filtering

- D. Changing wireless speed standards
- E. SSID disable

Answer: AC

NEW QUESTION 648

- (Exam Topic 3)

A network technician is configuring user's access to a VPN concentrator and has advised to use a protocol that supports encryption over UDP. Which of the following protocols has the technician MOST likely configured for client use?

- A. TFTP
- B. DTLS
- C. DNS
- D. SNMP

Answer: B

NEW QUESTION 653

- (Exam Topic 3)

Which of the following needs to be configured on a switch to use a packet sniffer?

- A. Port trunking
- B. Port mirroring
- C. Tagged VLAN
- D. Untagged VLAN

Answer: B

NEW QUESTION 654

- (Exam Topic 3)

A network administrator has created a virtual machine in the cloud. The technician would like to connect to the server remotely using RDP. Which of the following default ports needs to be opened?

- A. 445
- B. 3389
- C. 5004
- D. 5060

Answer: B

NEW QUESTION 656

- (Exam Topic 3)

Which of the following will prevent switching loops by selectively shutting down switch ports?

- A. RIP
- B. IGP
- C. STP
- D. VLAN

Answer: C

NEW QUESTION 661

- (Exam Topic 3)

Which of the following protocols is used to allow multiple hosts to share a common IP address?

- A. HTTPS
- B. ARP
- C. CARP
- D. NAT

Answer: D

NEW QUESTION 666

- (Exam Topic 3)

The software in a virtualized environment that controls resource allocation and allows multiple operating system guests to run on the same physical platform is known as the:

- A. hypervisor.
- B. LPAR.
- C. broker.
- D. VDI.

Answer: A

NEW QUESTION 668

- (Exam Topic 3)

Which of the following occurs when antenna gain is increased on an access point?

- A. Connection speeds decrease
- B. Throughput decreases
- C. Cell size increases
- D. Attenuation increases

Answer: C

NEW QUESTION 672

- (Exam Topic 3)

No link lights on a switch's SFP are functioning, so the network technician re-terminates the end. After testing the cable, the tester is showing a db loss of-9. Which of the following types of cable is MOST likely being tested?

- A. Fiber
- B. CAT3
- C. CAT5e
- D. CAT6a

Answer: A

NEW QUESTION 677

- (Exam Topic 3)

Jeff, a technician, is charged with setting up network monitoring for critical devices in the network. It is important the information be sent securely to the monitoring station. Which of the following protocols will support secure transmission of the data?

- A. SNMP v2
- B. VPN
- C. SYSLOG
- D. SMTP

Answer: A

NEW QUESTION 678

- (Exam Topic 3)

A junior technician is settings up a voice control device so the Chief Executive Officer (CEO) will able to control various things in the office. Of which of the following types of the IoT technologies is this an example?

- A. LAN
- B. WAN
- C. SAN
- D. PAN

Answer: B

NEW QUESTION 683

- (Exam Topic 3)

Which of the following technologies allows for redundant links within a Layer 2 segment?

- A. OSPF
- B. RIP
- C. Port Mirroring
- D. Spanning Tree

Answer: D

NEW QUESTION 686

- (Exam Topic 3)

Jeff, a user, is having a problem with a POTS line. Which of the following tools would Jeff use to make sure the phone lines have a dial tone?

- A. Loopback plugs
- B. Butt set
- C. Cable certifier
- D. Toner probe

Answer: B

NEW QUESTION 688

- (Exam Topic 3)

A mobile user is no longer able to access network resources. Jeff, the network technician, is unable to ping the user's workstation. Which of the following commands would MOST likely be used on that workstation to verify its current network settings?

- A. net share
- B. hostname
- C. ipconfig
- D. tracert

Answer: C

NEW QUESTION 690

- (Exam Topic 3)

Which of the following utilities would a technician use to determine the location of lost packets on a routed network?

- A. ping
- B. nslookup
- C. route
- D. tracer

Answer: D

NEW QUESTION 694

- (Exam Topic 3)

Kim, a user, cannot access the network using wireless. Which of the following is MOST likely the cause?

- A. TXRX is reversed
- B. Faulty crossover cable
- C. Incorrect WEP key
- D. A short in the cable pairs

Answer: C

NEW QUESTION 696

- (Exam Topic 3)

Keeping an authoritative and timely record of network devices and their settings is a key activity of which of the following?

- A. Project management
- B. Quality of service
- C. Configuration management
- D. Bandwidth shaping

Answer: C

NEW QUESTION 701

- (Exam Topic 3)

A technician needs to limit the amount of broadcast traffic on a network and allow different segments to communicate with each other. Which of the following options would satisfy these requirements?

- A. Add a router and enable OSPF.
- B. Add a layer 3 switch and create a VLAN.
- C. Add a bridge between two switches.
- D. Add a firewall and implement proper ACL.

Answer: B

Explanation:

We can limit the amount of broadcast traffic on a switched network by dividing the computers into logical network segments called VLANs.

A virtual local area network (VLAN) is a logical group of computers that appear to be on the same LAN even if they are on separate IP subnets. These logical subnets are configured in the network switches. Each VLAN is a broadcast domain meaning that only computers within the same VLAN will receive broadcast traffic.

To allow different segments (VLAN) to communicate with each other, a router is required to establish a connection between the systems. We can use a network router to route between the VLANs or we can use a 'Layer 3' switch. Unlike layer 2 switches that can only read the contents of the data-link layer protocol header in the packets they process, layer 3 switches can read the (IP) addresses in the network layer protocol header as well.

NEW QUESTION 702

- (Exam Topic 3)

Which of the following is the prefix for a link-local IPv6 address?

- A. FE80::/10
- B. FF00::/8
- C. 2FFE::/16
- D. FEEF:/12

Answer: A

NEW QUESTION 705

- (Exam Topic 3)

Which of the following devices is used to distribute network traffic equally over multiple links?

- A. Content filter
- B. DNS server
- C. Load balancer
- D. Proxy server

Answer:

C

NEW QUESTION 710

.....

Thank You for Trying Our Product

We offer two products:

1st - We have Practice Tests Software with Actual Exam Questions

2nd - Questions and Answers in PDF Format

N10-007 Practice Exam Features:

- * N10-007 Questions and Answers Updated Frequently
- * N10-007 Practice Questions Verified by Expert Senior Certified Staff
- * N10-007 Most Realistic Questions that Guarantee you a Pass on Your First Try
- * N10-007 Practice Test Questions in Multiple Choice Formats and Updates for 1 Year

100% Actual & Verified — Instant Download, Please Click
[Order The N10-007 Practice Test Here](#)