

## Exam Questions 350-901

Developing Applications using Cisco Core Platforms & APIs

<https://www.2passeasy.com/dumps/350-901/>



#### NEW QUESTION 1

Which two statements are considered best practices according to the 12-factor app methodology for application design? (Choose two.)

- A. Application code writes its event stream to stdout.
- B. Application log streams are archived in multiple replicated databases.
- C. Application log streams are sent to log indexing and analysis systems.
- D. Application code writes its event stream to specific log files.
- E. Log files are aggregated into a single file on individual nodes.

**Answer:** AD

#### NEW QUESTION 2

An organization manages a large cloud-deployed application that employs a microservices architecture. No notable issues occur with downtime because the services of this application are redundantly deployed over three or more data center regions. However, several times a week reports are received about application slowness. The container orchestration logs show faults in a variety of containers that cause them to fail and then spin up brand new. Which action must be taken to improve the resiliency design of the application while maintaining current scale?

- A. Update the base image of the containers.
- B. Test the execution of the application with another cloud services platform.
- C. Increase the number of containers running per service.
- D. Add consistent “try/catch(exception)” clauses to the code.

**Answer:** D

#### NEW QUESTION 3

How should a web application be designed to work on a platform where up to 1000 requests per second can be served?

- A. Use algorithms like random early detection to deny excessive requests.
- B. Set a per-user limit (for example, 5 requests/minute/user) and deny the requests from the users who have reached the limit.
- C. Only 1000 user connections are allowed; further connections are denied so that all connected users can be served.
- D. All requests are saved and processed one by one so that all users can be served eventually.

**Answer:** D

#### NEW QUESTION 4

Which two situations are flagged by software tools designed for dependency checking in continuous integration environments, such as OWASP? (Choose two.)

- A. publicly disclosed vulnerabilities related to the included dependencies
- B. mismatches in coding styles and conventions in the included dependencies
- C. incompatible licenses in the included dependencies
- D. test case failures introduced by bugs in the included dependencies
- E. buffer overflows to occur as the result of a combination of the included dependencies

**Answer:** AE

#### NEW QUESTION 5

Which two statements about a stateless application are true? (Choose two.)

- A. Different requests can be processed by different servers.
- B. Requests are based only on information relayed with each request.
- C. Information about earlier requests must be kept and must be accessible.
- D. The same server must be used to process all requests that are linked to the same state.
- E. No state information can be shared across servers.

**Answer:** AB

#### NEW QUESTION 6

Which statement about microservices architecture is true?

- A. Applications are written in a single unit.
- B. It is a complex application composed of multiple independent parts.
- C. It is often a challenge to scale individual parts.
- D. A single faulty service can bring the whole application down.

**Answer:** B

#### NEW QUESTION 7

DRAG DROP

Drag and drop the characteristics from the left onto the correct data processing techniques on the right, in the context of GDPR.  
Select and Place:

Answer Area

processing of personal data in such a manner that the personal data can no longer be attributed to a specific data subject without the use of additional information

data stripped of sufficient elements such that the data subject can no longer be identified

can be re-identified

cannot be re-identified

Data anonymization

Data pseudonymization

- A. Mastered
- B. Not Mastered

Answer: A

Explanation:

Answer Area

processing of personal data in such a manner that the personal data can no longer be attributed to a specific data subject without the use of additional information

data stripped of sufficient elements such that the data subject can no longer be identified

can be re-identified

cannot be re-identified

Data anonymization

can be re-identified

data stripped of sufficient elements such that the data subject can no longer be identified

Data pseudonymization

cannot be re-identified

processing of personal data in such a manner that the personal data can no longer be attributed to a specific data subject without the use of additional information

NEW QUESTION 8

Which two data encoding techniques are supported by gRPC? (Choose two.)

- A. XML
- B. JSON
- C. ASCII
- D. ProtoBuf
- E. YAML

Answer: BE

NEW QUESTION 9

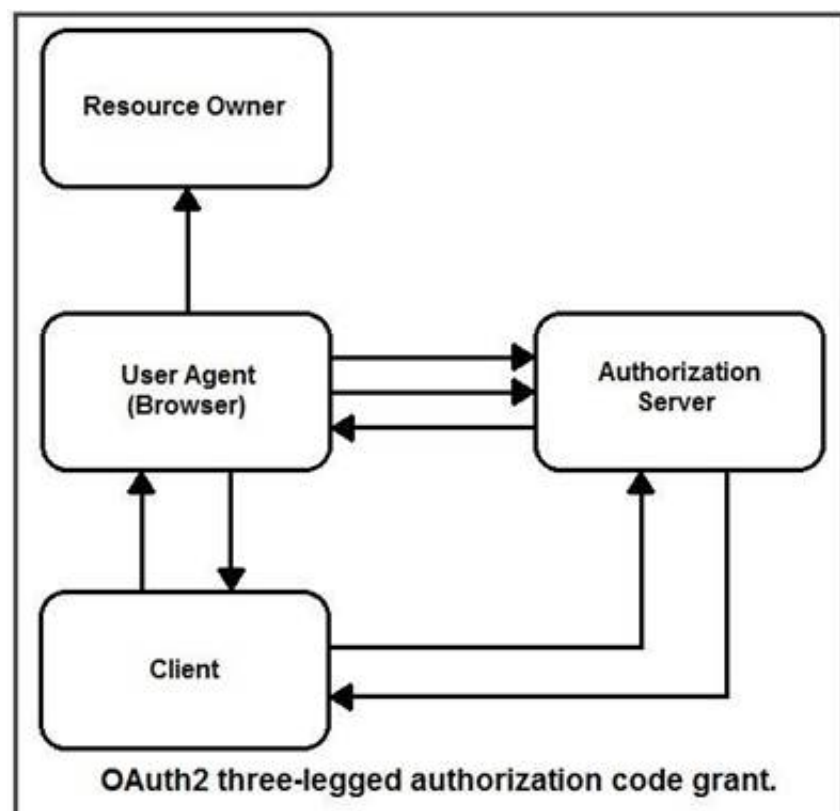
Which transport protocol is used by gNMI?

- A. HTTP/2
- B. HTTP 1.1
- C. SSH
- D. MQTT

Answer: A

NEW QUESTION 10

DRAG DROP



Refer to the exhibit. Drag and drop the steps from the left into the correct order of operation on the right for a successful OAuth2 three-legged authorization code grant flow.

Select and Place:

#### Answer Area

|   |        |
|---|--------|
| Client initiates the flow.  | step 1 |
| The authorization server authenticates the client, validates details sent, and responds with an access token. | step 2 |
| The authorization server redirects the user-agent back to the client using the redirection URI provided.      | step 3 |
| The authorization server authenticates the resource owner.  | step 4 |
| The client requests an access token from the authorization server's token endpoint.                           | step 5 |

- A. Mastered
- B. Not Mastered

Answer: A

Explanation:

#### Answer Area

|   |   |
|---|---|
| Client initiates the flow.  | Client initiates the flow.  |
| The authorization server authenticates the client, validates details sent, and responds with an access token. | The authorization server redirects the user-agent back to the client using the redirection URI provided.      |
| The authorization server redirects the user-agent back to the client using the redirection URI provided.      | The authorization server authenticates the resource owner.  |
| The authorization server authenticates the resource owner.  | The client requests an access token from the authorization server's token endpoint.                           |
| The client requests an access token from the authorization server's token endpoint.                           | The authorization server authenticates the client, validates details sent, and responds with an access token. |

#### NEW QUESTION 10

Which two methods are API security best practices? (Choose two.)

- A. Use tokens after the identity of a client has been established.
- B. Use the same operating system throughout the infrastructure.
- C. Use encryption and signatures to secure data.
- D. Use basic auth credentials over all internal API interactions.
- E. Use cloud hosting services to manage security configuration.

Answer: AC

#### NEW QUESTION 12



### Paginating the Results

By adding the `page-size` operator to the query URI you can divide the query results into groups (pages) of objects using the following syntax. The operand specifies the number of objects in each group.

`page-size = number-of-objects-per-page`

By adding the `page` operator in the query URI, you can specify a single group to be returned using the following syntax. The pages start from number 0.

`page = page-number`

This example shows you how to specify 15 fault instances per page in descending order, returning only the first page:

Refer to the exhibit. Many faults have occurred in the ACI environment and a sample of them needs to be examined. Which API call retrieves faults 30 through 45?

- A. GET https://apic-ip-address/api/class/faultInfo.json?order-by=faultinst.severity|desc&page=1&page-size=15
- B. GET https://apic-ip-address/api/class/faultInfo.json?order-by=faultinst.severity|desc&page=2&page-size=15
- C. GET https://apic-ip-address/api/class/faultInfo.json?order-by=faultinst.severity|desc&page=30
- D. GET https://apic-ip-address/api/class/faultInfo.json?order-by=faultinst.severity|desc&page=2&page-size=30

Answer: D

### NEW QUESTION 17

Refer to the exhibit. The cURL POST request creates an OAuth access token for authentication with FDM API requests. What is the purpose of the file “@token\_data” that cURL is handling?

- A. This file is a container to log possible error responses in the request.
- B. This file is given as input to store the access token received from FDM.
- C. This file is used to send authentication related headers.
- D. This file contains raw data that is needed for token authentication.

Answer: B

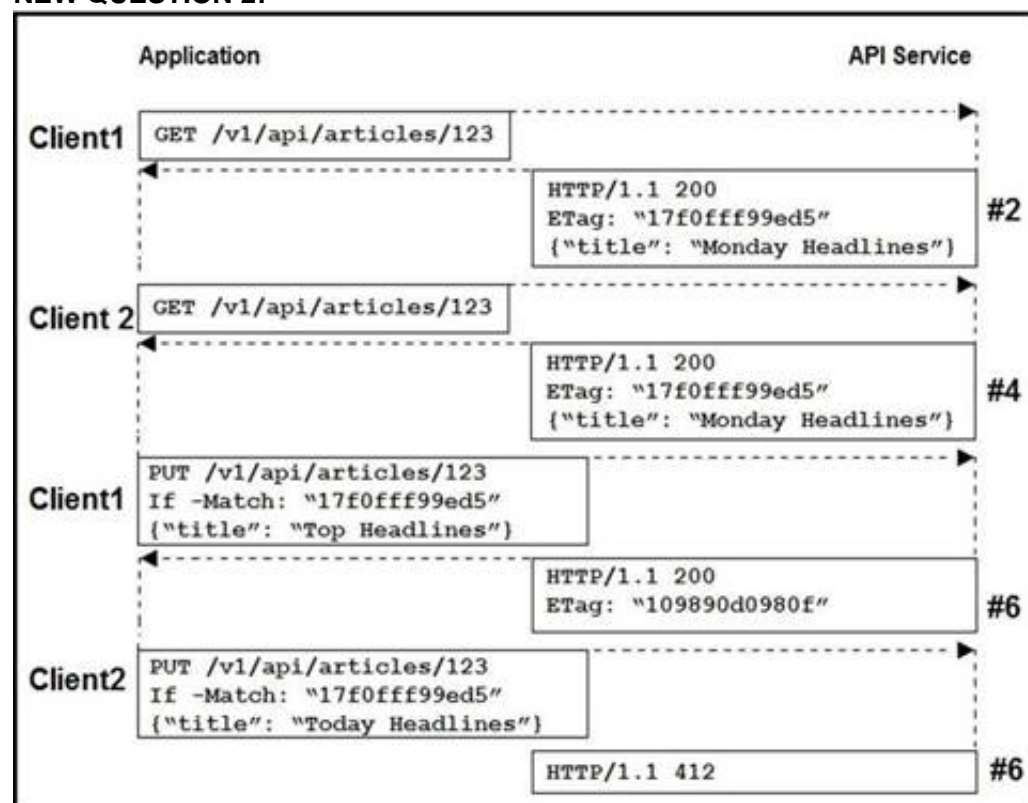
### NEW QUESTION 22

Which RFC5988 (Web Linking) relation type is used in the Link header to control pagination in APIs?

- A. rel="index"
- B. rel="page"
- C. rel="next"
- D. rel="section"

Answer: C

### NEW QUESTION 27



Refer to the exhibit. Two editors are concurrently updating an article's headline from their mobile devices. What results from this scenario based on this REST API sequence?

- A. The article is marked as "Conflicted"
- B. The article headline is "Monday Headlines"
- C. The article headline is "Today Headlines"
- D. The article headline is "Top Headlines"

Answer: B

## NEW QUESTION 32

```
response = requests.get(url)
if response.status_code != 200:
    error_message = "Unexpected HTTP Response code: {}".format(response.status_code)
    raise Exception(error_message)
data = response.json()
```

Refer to the exhibit. This snippet of a script has recently started exiting abnormally with an exception stating "Unexpected HTTP Response code: 429". Which solution handles rate limiting by the remote API?

- A.
- ```
response = requests.get(url)
if response.status_code == 429:
    backoff_seconds = int(response.headers['Retry-After'])
    sleep(backoff_seconds)
elif response.status_code != 200:
    error_message = "Unexpected HTTP Response code: {}".format(response.status_code)
    raise Exception(error_message)
data = response.json()
```
- B.
- ```
response = requests.get(url)
if response.status_code != 200 and response.status_code != 429:
    error_message = "Unexpected HTTP Response code: {}".format(response.status_code)
    raise Exception(error_message)
data = response.json()
```
- C.
- ```
response = requests.get(url)
if response.status_code != 200 and response.status_code != 429:
    backoff_seconds = int(response.headers['Retry-After'])
    sleep(backoff_seconds)
    error_message = "Unexpected HTTP Response code: {}".format(response.status_code)
    raise Exception(error_message)
data = response.json()
```
- D.
- ```
response = requests.get(url)
if response.status_code == 429:
    backoff_seconds = int(response.headers['Retry-After'])
    sleep(backoff_seconds)
    response = requests.get(url)
elif response.status_code != 200:
    error_message = "Unexpected HTTP Response code: {}".format(response.status_code)
    raise Exception(error_message)
data = response.json()
```

Answer: D

## NEW QUESTION 35

An application uses OAuth to get access to several API resources on behalf of an end user. What are two valid parameters to send to the authorization server as part of the first step of an authorization code grant flow? (Choose two.)

- A. URI to which the authorization server will send the user-agent back when access is granted or denied
- B. list of the API resources that the application is requesting to access
- C. secret that was generated by the authorization server when the application registered as an OAuth integration
- D. list of scopes that correspond to the API resources to which the application is requesting to access
- E. name of the application under which the application registered as an OAuth integration

Answer: AC

## NEW QUESTION 40

On a Cisco Catalyst 9300 Series Switch, the guest shell is being used to create a service within a container. Which change is needed to allow the service to have external access?

- A. Apply ip nat overload on VirtualPortGroup0.
- B. Apply ip nat inside on Interface VirtualPortGroup0.
- C. Apply ip nat outside on Interface VirtualPortGroup0.
- D. Apply ip nat inside on Interface GigabitEthernet1.



Answer: B

#### NEW QUESTION 44

```
headers = ( _____ )
try:
    response = requests.get("https://sandboxdnac.cisco.com/dna/intent/api/v1/wireless/profile",
        headers=headers, verify=False)
except requests.exceptions.RequestException as error:
    print("Error processing request", error)
    sys.exit(1)
```

Refer to the exhibit. Which code snippet is required in the headers to successfully authorize wireless information from Cisco DNA Center?

- A. headers = {'X-auth-token':'fa8426a0-8eaf-4d22-8e13-7c1b16a9370c'} B.headers = {'Authorization':'Basic YWRtaW46R3JhcGV2aW5IMQ=='}  
B. headers = {'Authorization':'Bearer ASDNFALKJER23412RKDALSNKF'}  
C. headers = {'Content-type':'application/json'}

Answer: A

#### NEW QUESTION 46

There is a requirement to securely store unique usernames and passwords. Given a valid username, it is also required to validate that the password provided is correct. Which action accomplishes this task?

- A. Encrypt the username, hash the password, and store these values.  
B. Hash the username, hash the password, and store these values.  
C. Encrypt the username, encrypt the password, and store these values.  
D. Hash the username, encrypt the password, and store these values.

Answer: A

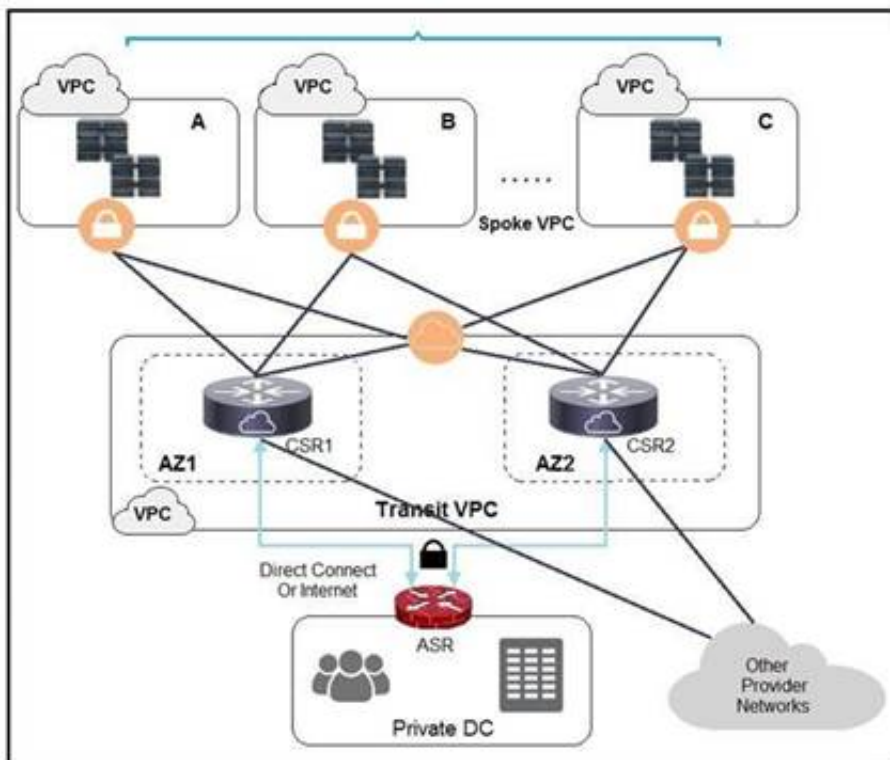
#### NEW QUESTION 50

A web application is susceptible to cross-site scripting. Which two methods allow this issue to be mitigated? (Choose two.)

- A. Use only drop downs.  
B. Limit user input to acceptable characters.  
C. Encrypt user input on the client side.  
D. Use AES encryption to secure the script.  
E. Remove all HTML/XML tags from user input.

Answer: BD

#### NEW QUESTION 53



Refer to the exhibit. A company has extended networking from the data center to the cloud through Transit VPC. Which two statements describe the benefits of this approach? (Choose two.)

- A. Dynamic routing combined with multi-AZ- deployment creates a robust network infrastructure.  
B. VPC virtual gateways provide highly available connections to virtual networks.  
C. Dedicated VPC simplifies load balancing by combining internal and external web services.  
D. VPC virtual gateways provide more secure connections to virtual networks.  
E. Dedicated VPC simplifies routing by not combining this service with other shared services.

Answer: BD

#### NEW QUESTION 54

A developer has just completed the configuration of an API that connects sensitive internal systems. Based on company policies, the security of the data is a high priority. Which approach must be taken to secure API keys and passwords?

- A. Embed them directly in the code.
- B. Store them in a hidden file.
- C. Store them inside the source tree of the application.
- D. Change them periodically.

**Answer:** D

#### NEW QUESTION 56

What is submitted when an SSL certificate is requested?

- A. PEM
- B. CRT
- C. DER
- D. CSR

**Answer:** D

#### NEW QUESTION 59

Which type of file is created from issued intermediate, root, and primary certificates for SSL installation on a server?

- A. DER
- B. CSR
- C. PEM
- D. CRT

**Answer:** C

#### NEW QUESTION 63

Which two statements describe advantages of static code analysis over unit tests? (Choose two.)

- A. It checks for potential tainted data where input is not checked.
- B. It enforces proper coding standards and style.
- C. It performs a quick analysis of whether tests will pass or fail when run.
- D. It checks for race conditions in threaded applications.
- E. It estimates the performance of the code when run.

**Answer:** BC

#### NEW QUESTION 64

```
FROM alpine:3.7
RUN apk add --no-cache bash
```

Refer to the exhibit. Which additional line results in the output of Test 1 upon execution of the docker run --rm devnet 1 command in a Dockerfile with this content?

- A. CMD ["/bin/echo", "Test"]
- B. RUN ["/bin/echo", "Test"]
- C. ENTRYPOINT ["/bin/echo", "Test"]
- D. CMD ["/bin/echo Test"]

**Answer:** A

#### NEW QUESTION 65



```
apiVersion: v1
clusters:
- cluster:
  certificate-authority: fake-ca-file
  server: https://1.2.3.4
  name: development
- cluster:
  insecure-skip-tls-verify: true
  server: https://5.6.7.8
  name: scratch
contexts:
- context:
  cluster: development
  namespace: frontend
  user: developer
  name: dev-frontend
- context:
  cluster: development
  namespace: storage
  user: developer
  name: dev-storage
- context:
  cluster: scratch
  namespace: default
  user: experimenter
  name: exp-scratch
current context: ""
kind: Config
preferences: {}
users:
- name: developer
  user:
    client-certificate: fake-cert-file
    client-key: fake-key-file
- name: experimenter
  user:
    password: some-password
    username: exp
```

Refer to the exhibit. A kubeconfig file to manage access to clusters is provided. How many clusters are defined and which of them are accessed using username/password authentication versus certificate?

- A. two clusters; scratch
- B. three clusters; scratch
- C. three clusters; development
- D. two clusters; development

**Answer: C**

#### NEW QUESTION 66

Which two strategies are used to protect personally identifiable information? (Choose two.)

- A. Encrypt data in transit.
- B. Encrypt hash values of data.
- C. Encrypt data at rest.
- D. Only hash usernames and passwords for efficient lookup.
- E. Only encrypt usernames and passwords for efficient lookup.

**Answer: AB**

#### NEW QUESTION 70

Which database type should be used to store data received from model- driven telemetry?

- A. BigQuery database
- B. Time series database
- C. NoSQL database
- D. PostgreSQL database

**Answer: B**

#### NEW QUESTION 73

An automated solution is needed to configure VMs in numerous cloud provider environments to connect the environments to an SDWAN. The SDWAN edge VM is provided as an image in each of the relevant clouds and can be given an identity and all required configuration via cloud-init without needing to log into the VM

once online.

Which configuration management and/or automation tooling is needed for this solution?

- A. Ansible
- B. Ansible and Terraform
- C. NSO
- D. Terraform
- E. Ansible and NSO

**Answer: E**

#### NEW QUESTION 78

```
name: VRFs
ios_vrf:
  vrfs: "{{ local_vrfs }}"
  state: present
  purge: yes
```

Refer to the exhibit. The YAML represented is using the ios\_vrf module. As part of the Ansible playbook workflow, what is the result when this task is run?

- A. VRFs not defined in the host\_vars file are removed from the device.
- B. VRFs not defined in the host\_vars file are added to the device, and any other VRFs on the device remain.
- C. VRFs defined in the host\_vars file are removed from the device.
- D. VRFs are added to the device from the host\_vars file, and any other VRFs on the device are removed.

**Answer: D**

#### NEW QUESTION 80

```
- name: Configure Interfaces
  with_items: "{{ interfaces }}"
  netconf_config:
    <<: *host_info
    xml: |
      <config>
        <interfaces xmlns="urn:ietf:params:xml:ns:yang:ietf-interfaces">
          <interface>
            <name>{{ item.interface_type }}{{ item.interface_id }}</name>
            <description>{{ item.description }}</description>
            <type xmlns:ianaift="urn:ietf:params:xml:ns:yang:iana-if-type">ianaift:ethernetCsmacd</type>
            <enabled>true</enabled>
            <ipv4 xmlns="urn:ietf:params:xml:ns:yang:ietf-ip">
              <address>
                <ip>{{ item.ip_address }}</ip>
                <netmask>{{ item.subnet_mask }}</netmask>
              </address>
            </ipv4>
          </interface>
        </interfaces>
      </config>
```

Refer to the exhibit. As part of the Ansible playbook workflow, several new interfaces are being configured using the netconf\_config module. The task references the interface variables that are unique per device. In which directory is the YAML file with these variables found?

- A. host\_vars directory
- B. home directory
- C. group\_vars directory
- D. current working directory

**Answer: A**

#### NEW QUESTION 84

A developer needs to configure an environment to orchestrate and configure. Which two tools should be used for each task? (Choose two.)

- A. Puppet for orchestration
- B. Terraform for orchestration
- C. Terraform for configuration
- D. Ansible for orchestration
- E. Ansible for configuration

**Answer: BE**

#### NEW QUESTION 86

Application sometimes store configuration as constants in the code, which is a violation of strict separation of configuration from code. Where should application configuration be stored?

- A. environment variables
- B. YAML files
- C. Python libraries
- D. Dockerfiles
- E. INI files

**Answer: B**

NEW QUESTION 88

.....



## THANKS FOR TRYING THE DEMO OF OUR PRODUCT

Visit Our Site to Purchase the Full Set of Actual 350-901 Exam Questions With Answers.

We Also Provide Practice Exam Software That Simulates Real Exam Environment And Has Many Self-Assessment Features. Order the 350-901 Product From:

<https://www.2passeasy.com/dumps/350-901/>

## Money Back Guarantee

### 350-901 Practice Exam Features:

- \* 350-901 Questions and Answers Updated Frequently
- \* 350-901 Practice Questions Verified by Expert Senior Certified Staff
- \* 350-901 Most Realistic Questions that Guarantee you a Pass on Your FirstTry
- \* 350-901 Practice Test Questions in Multiple Choice Formats and Updatesfor 1 Year