

F5-Networks

Exam Questions 201

TMOS Administration



NEW QUESTION 1

A BIG-IP Administrator adds new Pool Members into an existing, highly utilized pool. Soon after, there are reports that the application is failing to load for some users. What pool level setting should the BIG-IP Administrator check?

- A. Availability Requirement
- B. Allow SNAT
- C. Action On Service Down
- D. Slow Ramp Time

Answer: D

Explanation:

Option ABC is a global configuration, has nothing to do with the new pool member, select D after excluding

NEW QUESTION 2

A BIG-IP Administrator notices that one of the servers that runs an application is NOT receiving any traffic. The BIG-IP Administrator examines the configuration status of the application and observes the displayed monitor configuration and affected Pool Member status.



What is the possible cause of this issue?

- A. The Node Health Monitor is NOT responding.
- B. The application is NOT responding with the expected Receive String.
- C. HTTP 1.1 is NOT appropriate for monitoring purposes.
- D. The BIG-IP device is NOT able to reach the Pool.

Answer: A

NEW QUESTION 3

A BIG-IP Administrator defines a device Self IP . The Self IP is NOT reachable from the network. What should the BIG-IP Administrator verify first?

- A. The correct interface has been selected.
- B. The correct VLAN has been selected.
- C. Verify if auto last hop is disabled.
- D. The correct Trunk has been selected.

Answer: B

NEW QUESTION 4

A BIG-IP Administrator explicitly creates a traffic group on a BIG-IP device.

Which two types of configuration objects can be associated with this traffic group? (Choose two.)

- A. Pool Members
- B. Virtual Addresses
- C. iRules
- D. VLANS
- E. Application Instances

Answer: BE

NEW QUESTION 5

A BIG-IP Administrator uses backend servers to host multiple services per server. There are multiple virtual servers and pools defined, referencing the same backend servers.

Which load balancing algorithm is most appropriate to have an equal number of connections on each backend server?

- A. Least Connections (member)
- B. Least Connections (node)
- C. Predictive (member)
- D. Predictive (node)

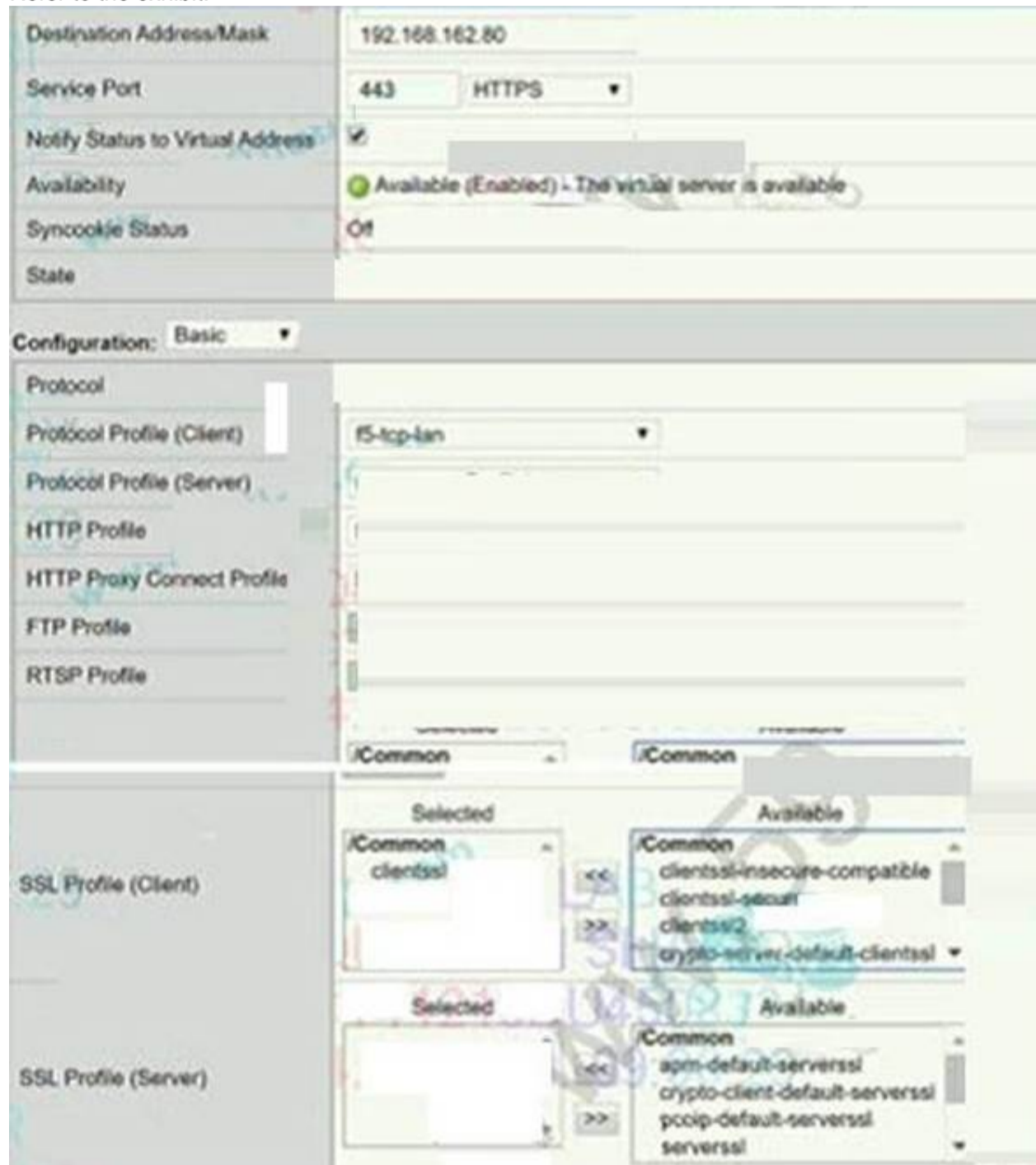
Answer: B

Explanation:

The same set of servers provides multiple services, that is, using different ports to provide different services at the same time. The stem requirement is based on server connection balancing, not server + port, so it is node.

NEW QUESTION 6

Refer to the exhibit.



A BIG-IP Administrator needs to deploy an application on the BIG-IP system to perform SSL offload and re-encrypt the traffic to pool members. During testing, users are unable to connect to the application. What must the BIG-IP Administrator do to resolve the issue?

- A. Remove the configured SSL Profile (Client)
- B. Configure Protocol Profile (Server) as splitsession-default-tcp
- C. Enable Forward Proxy in the SSL Profile (Client)
- D. Configure an SSL Profile (Server)

Answer: D

Explanation:

According to the requirements of the subject, the client and server must be configured with ssl profile.

NEW QUESTION 7

Some users who connect to a busy Virtual Server have connections reset by the BIG-IP system. Pool member resources are NOT a factor in this behavior. What is a possible cause for this behavior?

- A. The Connection Rate Limit is set too high
- B. The server SSL Profile has NOT been reconfigured.
- C. The Connection Limit is set too low.
- D. The Rewrite Profile has NOT been configured.

Answer: C

Explanation:

The topic explains that the connection reset behavior is caused by the vs configuration rather than the server resource problem. The answers B C are all configuration at the service forwarding level. If there is a problem with the configuration, it is all a problem rather than some users. Answer C's Connection Limit will cause a reset behavior when the connection reaches the threshold.

NEW QUESTION 8

Which statement is true concerning a functional iRule?

- A. iRules use a proprietary syntax language.
- B. iRules must contain at least one event declaration.
- C. iRules must contain at least one conditional statement.
- D. iRules must contain at least one pool assignment statement.

Answer: B

NEW QUESTION 9

Which statement is true regarding failover?

- A. Hardware failover is disabled by default.
- B. Hardware failover can be used in conjunction with network failover.
- C. If the hardware failover cable is disconnected, both BIGIP devices will always assume the active role.
- D. By default, hardware fail over detects voltage across the failover cable and monitors traffic across the internal VLAN.

Answer: B

NEW QUESTION 10

What should the BIG-IP Administrator do to apply and activate a hotfix to a BIG-IP device that is currently running version 11.0.0 on active partition HD1.1?

- A. * 1. confirm that 11.0.0 is installed on inactive partition HD1.2* 2. apply a hotfix to partition HD 1.2* 3. activate partition HD1.2
- B. * 1. reactivate the license on partition HD1.1* 2. apply a hotfix to partition HD1.1
- C. * 1. activate partition HD1.2* 2 confirm version 11.0.0 on partition HD1.2* 3. install a hotfix on partition HD1.2
- D. * 1. set partition HD1.2 active* 2. apply a hotfix to partition HD1.2

Answer: A

NEW QUESTION 10

When configuring a pool member's monitor, which three association options are available? (Choose three.)

- A. inherit the pool's monitor
- B. inherit the node's monitor
- C. configure a default monitor
- D. assign a monitor to the specific member
- E. do not assign any monitor to the specific member

Answer: ADE

NEW QUESTION 13

A BIG-IP Administrator upgrades the BIG-IP LTM to a newer software version. After the administrator reboots into the new volume, the Configuration fails to load. Why is the Configuration failing to load?

- A. The license needs to be reactivated before the upgrade.
- B. The upgrade was performed on the standby unit.
- C. A minimum of at least two reboots is required.
- D. Connectivity to the DNS server failed to be established.

Answer: A

NEW QUESTION 16

Which statement is true concerning the default communication between a redundant pair of BIG-IP devices?

- A. Communication between the systems cannot be effected by port lockdown settings.
- B. Data for both connection and persistence mirroring are shared through the same TCP connection.
- C. Regardless of the configuration, some data is communicated between the systems at regular intervals.
- D. Connection mirroring data is shared through the serial fail over cable unless network failover is enabled.

Answer: B

NEW QUESTION 17

A BIG-IP Administrator suspects that one of the BIG-IP device power supplies is experiencing power outages. Which log file should the BIG-IP Administrator check to verify the suspicion?

- A. /var /log/daemon.log
- B. /var/log/kern.log
- C. /var/log/ltm
- D. /var/log/audit

Answer: C

NEW QUESTION 21

A BIG-IP Administrator runs the initial configuration wizard and learns that the NTP servers were invalid. In which area of the Configuration Utility should the BIG-IP Administrator update the list of configured NTP servers?

- A. System > Configuration

- B. System > Services
- C. System > Preferences
- D. System > Platform

Answer: A

NEW QUESTION 22

Refer to the exhibit.

During a planned upgrade to a BIG-IP HA pair running Active/Standby, an outage to application traffic is reported shortly after the Active unit is forced to Standby. Reverting the failover resolves the outage. What should the BIG-IP Administrator modify to avoid an outage during the next failover event?

- A. The Tag value on the Standby device
- B. The interface on the Active device to 1.1
- C. The Tag value on the Active device
- D. The Interface on the Standby device to 1.1

Answer: A

NEW QUESTION 25

A BIG-IP Administrator is informed that traffic on Interface 1.1 is expected to increase over the maximum bandwidth capacity on the link. There is a single VLAN on the Interface. What should the BIG-IP Administrator do to increase the total available bandwidth?

- A. Assign two Interfaces to the VLAN
- B. Set the media speed of Interface 1.1 manually
- C. Create a trunk object with two Interfaces
- D. Increase the MTU on the VLAN using Interface 1.1

Answer: C

NEW QUESTION 26

The current status of a given pool member is unknown. Which condition could explain that state?

- A. The member has no monitor assigned to it.
- B. The member has a monitor assigned to it and the most recent monitor was successful.
- C. The member has a monitor assigned to it and the monitor did not succeed during the most recent timeout period.
- D. The member's node has a monitor assigned to it and the monitor did not succeed during the most recent timeout period.

Answer: A

NEW QUESTION 31

Which statement is true concerning iRule events?

- A. All iRule events relate to HTTP processes.
- B. All client traffic has data that could be used to trigger iRule events.
- C. All iRule events are appropriate at any point in the clientserver communication.
- D. If an iRule references an event that doesn't occur during the client's communication, the client's connection will be terminated prematurely.

Answer: B

NEW QUESTION 34

A BIG-IP Administrator is conducting maintenance on one BIG-IP appliance in an HA Pair. Why should the BIG-IP Administrator put the appliance into FORCED_OFFLINE state?

- A. To preserve existing connections to Virtual Servers and reduce the CPU load
- B. To allow new connections to Virtual Servers and ensure the appliance becomes active
- C. To terminate connections to the management IP and decrease persistent connections
- D. To terminate existing connections to Virtual Servers and prevent the appliance from becoming active

Answer: D

NEW QUESTION 36

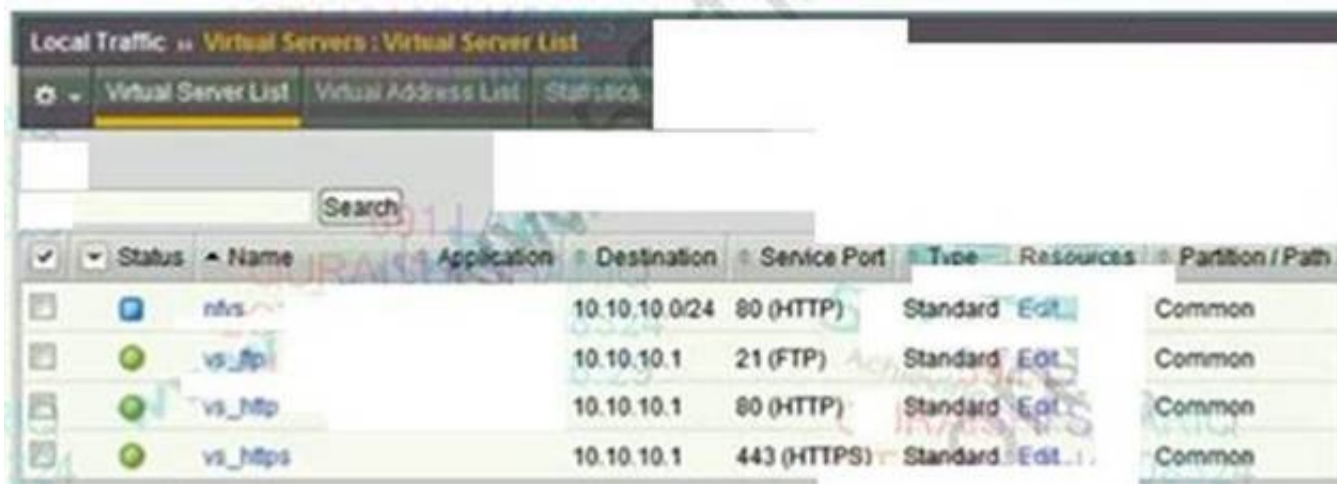
The BIG-IP Administrator generates a qkview using "qkview -SO" and needs to transfer the output file via SCP. Which directory contains the output file?

- A. /var/log
- B. /var/tmp
- C. /var/local
- D. /var/config

Answer: B

NEW QUESTION 41

Refer to the exhibit.



Status	Name	Application	Destination	Service Port	Type	Resources	Partition / Path
✓	nvfs		10.10.10.0/24	80 (HTTP)	Standard	Edit	Common
✓	vs_ftp		10.10.10.1	21 (FTP)	Standard	Edit	Common
✓	vs_http		10.10.10.1	80 (HTTP)	Standard	Edit	Common
✓	vs_https		10.10.10.1	443 (HTTPS)	Standard	Edit	Common

A user attempts to connect to 10.10.10.1.80 using FTP over SSL with an FTPS client. Which virtual server will match and attempt to process the request?

- A. vsjutps
- B. vs_ftp
- C. vs_http
- D. nvfs

Answer: B

NEW QUESTION 43

The owner of a web application asks the BIG-IP Administrator to change the port that the BIG-IP device sends traffic to. This change must be made for each member in the server pool named app_pool for their Virtual Server named app_vs. In which area of the BIG-IP Configuration Utility should the BIG-P Administrator make this change?

- A. Local Traffic > Pools
- B. Local Traffic > Nodes
- C. Network > Interfaces
- D. Local Traffic > Virtual Servers

Answer: A

NEW QUESTION 48

A BIG-IP Administrator is configuring an SSH Pool with five members.

Which Health Monitor should be applied to ensure that available pool members are monitored accordingly?

- A. https
- B. udp
- C. http
- D. tcp

Answer: D

NEW QUESTION 51

You have created a custom profile named TEST2. The parent profile of TEST2 is named TEST1. If additional changes are made to TEST1, what is the effect on TEST2?

- A. All changes to TEST1 are propagated to TEST2.
- B. Some of the changes to TEST1 may propagate to TEST2.
- C. Changes to TEST1 cannot affect TEST2 once TEST2 is saved.
- D. When TEST1 is changed, the administrator is prompted and can choose whether to propagate changes to TEST2.

Answer: B

NEW QUESTION 53

Which statement is true concerning SSL termination?

- A. A virtual server that has both ClientSSL and ServerSSL profiles can still support cookie persistence.
- B. Decrypting traffic at the BIG-IP allows the use of iRules for traffic management, but increases the load on the pool member.
- C. When any virtual server uses a ClientSSL profile, all SSL traffic sent to the BIG-IP is decrypted before it is forwarded to servers.
- D. If a virtual server has both a ClientSSL and ServerSSL profile, the pool members have less SSL processing than if the virtual server had only a ClientSSL profile.

Answer: A

NEW QUESTION 55

A development team needs to apply a software fix and troubleshoot one of its servers. The BIG-IP Administrator needs to immediately remove all connections from the BIG-IP system to the back end server. The BIG-IP Administrator checks the Virtual Server configuration and finds that a persistence profile is assigned to it. What should the BIG-IP Administrator do to meet this requirement?

- A. Set the pool member to a Forced Offline state and manually delete existing connections through the command line.
- B. Set the pool member to a Forced Offline state.
- C. Set the pool member to a Disabled state.
- D. Set the pool member to a Disabled state and manually delete existing connections through the command line.

Answer: A

NEW QUESTION 57

How is persistence configured?

- A. Persistence is an option within each pool's definition.
- B. Persistence is a profile type; an appropriate profile is created and associated with virtual server.
- C. Persistence is a global setting; once enabled, loadbalancing choices are superceded by the persistence method that is specified.
- D. Persistence is an option for each pool membe
- E. When a pool is defined, each member's definition includes the option for persistence.

Answer: B

NEW QUESTION 61

A BIG-IP Administrator discovers malicious brute-force attempts to access the BIG-IP device on the management interface via SSH. The BIG-IP Administrator needs to restrict SSH access to the management interface. Where should this be accomplished?

- A. System > Configuration
- B. Network > Interfaces
- C. Network > Self IPs
- D. System > Platform

Answer: D

NEW QUESTION 65

Where is the loadbalancing mode specified?

- A. within the pool definition
- B. within the node definition
- C. within the virtual server definition
- D. within the pool member definition

Answer: A

NEW QUESTION 67

Which statement is true concerning cookie persistence?

- A. Cookie persistence allows persistence independent of IP addresses.
- B. Cookie persistence allows persistence even if the data are encrypted from client to pool member.
- C. Cookie persistence uses a cookie that stores the virtual server, pool name, and member IP address in clear text.
- D. If a client's browser accepts cookies, cookie persistence will always cause a cookie to be written to the client's file system.

Answer: A

NEW QUESTION 70

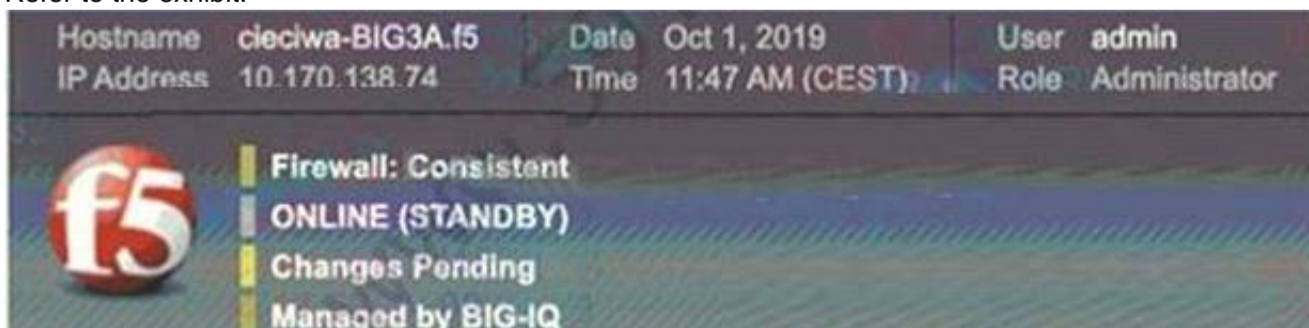
A web server administrator informs the BIG-IP Administrator that web servers are overloaded Starting next month, the BIG-IP device will terminate SSL to reduce web server load. The BIG-IP device is ready using client SSL client profile and Rules on HTTP level. What actions should the BIG-IP Administrators to achieve the desired configuration?

- A. Remove the server SSL profile and configure the Pool Members to use HTTP
- B. Remove the client SSL profile and configure the Pool Members to US HTTP
- C. Remove the chart SSL profile and change the Virtual Server to accept HTTP
- D. Remove the server SSL profile and change the Virtual Server to accept HTTP traffic

Answer: A

NEW QUESTION 71

Refer to the exhibit.



The BIG-IP Administrator has modified an iRule on one device of an HA pair. The BIG-IP Administrator notices there is NO traffic on the BIG-IP device in which they are logged into.

What should the BIG-IP Administrator do to verify if the iRule works correctly?

- A. Push configuration from this device to the group and start to monitor traffic on this device
- B. Pull configuration to this device to the cluster and start to monitor traffic on this device
- C. Log in to the other device in the cluster, push configuration from it, and start to monitor traffic on that device

D. Log in to the other device in the cluster, pull configuration to it, and start to monitor traffic on that device

Answer: D

Explanation:

The device in the picture is a standby machine, of course there is no traffic, you need to log in to the host, and then pull the configuration to the host.

NEW QUESTION 76

A virtual server at 10.10.1.100:80 has the rule listed below applied.

when HTTP_REQUEST { if {[HTTP::uri] ends_with "htm" } { pool pool1 } else if {[HTTP::uri] ends_with "xt" } { pool pool2 }

If a user connects to http://10.10.1.100/foo.txt which pool will receive the request?

- A. pool1
- B. pool2
- C. Non
- D. The request will be dropped.
- E. Unknow
- F. The pool cannot be determined from the information provided.

Answer: B

NEW QUESTION 80

A BIG-IP Administrator needs to remove a pool specific health monitor. There is a pool named Best Pool with two members, one named Best pool member and one named Best pool member2. In the Local Traffic section of the administrative GUI, which steps should the BIG-IP Administrator take to remove a pool level monitor?

- A. Pool > Pool List > Best Pool > Members > Health Monitors
- B. Nodes > Node List> Best _pool_member1 > Heath Monitors
- C. Monitors > Monitor Name> Instances
- D. Pool > Pool List> Best Pool > Health Monitors

Answer: D

NEW QUESTION 81

A pool of four servers has been partially upgraded for two new servers with more memory and CPU capacity. The BIG-IP Administrator must change the load balance method to consider more connections for the two new servers. Which load balancing method considers pool member CPU and memory load?

- A. Round Robin
- B. Dynamic Ratio
- C. Ratio
- D. Least Connection

Answer: C

NEW QUESTION 82

If a client's browser does not accept cookies, what occurs when the client connects to a virtual server using cookie persistence?

- A. The connection request is not processed.
- B. The connection request is sent to a pology server.
- C. The connection request is loadbalanced to an available pool member.
- D. The connection request is refused and the client is sent a "server not available" message.

Answer: C

NEW QUESTION 86

You have a pool of servers that need to be tested. All of the servers but one should be tested every 10 seconds, but one is slower and should only be tested every 20 seconds. How do you proceed?

- A. It cannot be don
- B. All monitors test every five seconds.
- C. It can be done, but will require assigning monitors to each pool member.
- D. It cannot be don
- E. All of the members of a pool must be tested at the same frequency.
- F. It can be done by assigning one monitor to the pool and a different monitor to the slower pool member.

Answer: D

NEW QUESTION 87

A node is a member of various pools and hosts different web applications. If a web application is unavailable, the BIG-IP appliance needs to mark the pool member down for that application pool. What should a BIG-IP Administrator deploy at the pool level to accomplish this?

- A. A UDP monitor with a custom interval/timeout
- B. A combination of ICMP + TCP monitor
- C. An HTTP monitor with custom send/receive strings
- D. A TCP monitor with a custom interval/timeout

Answer:

C

Explanation:

Requiring all traffic to be HTTPS access requires HTTP requests to be redirected directly to HTTPS.

NEW QUESTION 92

A BIG-IP Administrator makes a configuration change to the BIG-IP device. Which file logs the message regarding the configuration change?

- A. /var/log/messages
- B. /var/log/audit
- C. /var/log/user.log
- D. /var/log/secure

Answer: B

Explanation:

About audit logging

Audit logging is an optional feature that togs messages whenever a BIG-IP® system object, such as a virtual server or a load balancing pool, is confined (that is, created, modified, or deleted). The BiGIP system logs the messages for these auditing events in the file /var/log'audit

There are three ways that objects can be configured

- By user action
- By system action
- By loading configuration data

Whenever an object is configured in one of these ways, the BIG-IP system logs a message to the audit log

NEW QUESTION 96

A BIG-IP Administrator is checking the BIG-IP device for known vulnerabilities. What should the 8IG-IP Administrator upload to BIG-IP iHealth for further analysis?

- A. QKView
- B. EUD
- C. UCS
- D. tcpdump

Answer: A

NEW QUESTION 97

Refer to the exhibit.



A pool member fails the monitor checks for about 30 minutes and then starts passing the monitor checks. New traffic is Not being sent to the pool member. What is the likely reason for this problem?

- A. The pool member is disabled
- B. Monitor Type is TCP Half Open
- C. Manual resume is enabled
- D. Time Until Up is zero

Answer: C

NEW QUESTION 101

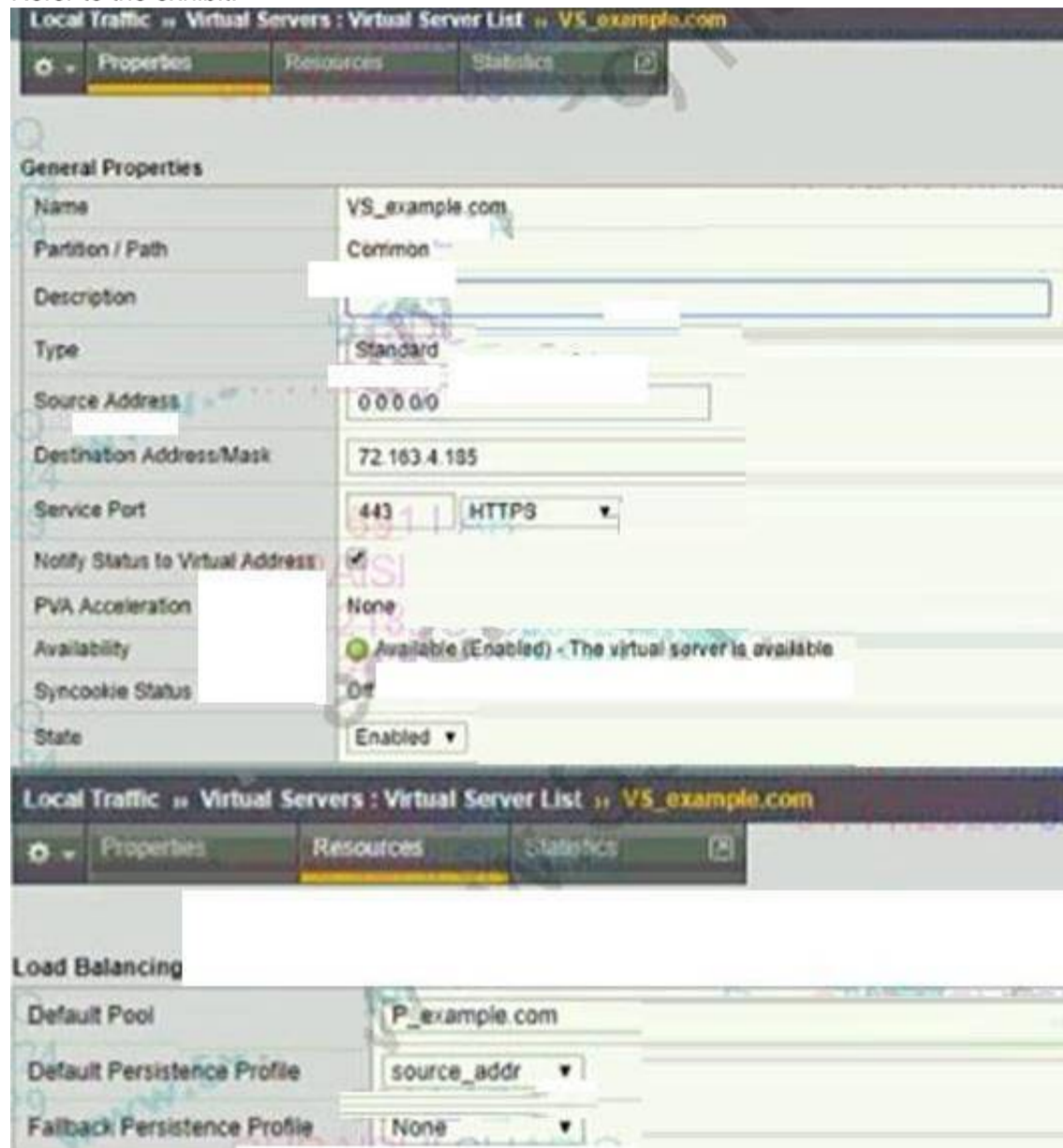
A site needs a virtual server that will use an iRule to parse HTTPS traffic based on HTTP header values. Which two profile types must be associated with such a virtual server? (Choose two.)

- A. TCP
- B. HTTP
- C. HTTPS
- D. ServerSSL

Answer: AB

NEW QUESTION 105

Refer to the exhibit.



An organization is reporting slow performance accessing their Intranet website, hosted in a public cloud. All employees use a single Proxy Server with the public IP of 104.219.110.168 to connect to the Internet. What should the BIG-IP Administrator of the Intranet website do to fix this issue?

- A. Change Source Address to 104.219.110.168/32
- B. Change Load Balancing Method to Least Connection
- C. Change Fallback Persistence Profile to source_addr
- D. Change Default Persistence Profile to cookie

Answer: D

NEW QUESTION 106

Refer to the exhibit

The BIG-IP Administrator is unable to access the management console via Self-IP 10.10 1.33 and port 443. What is the reason for this problem?

- A. Packet Filter needs to be configured to allow a source
- B. Self IP is configured to allow TCP All
- C. Self IP is configured to allow UDP 443
- D. Packet Filter is configured to allow port 443

Answer: C

NEW QUESTION 110

All pool members are online. All other virtual server settings are at default What might affect the load balancing behavior?

- A. enabling SNAT automap
- B. enabling a fallback host in the http profile
- C. adding a oneconnect profile
- D. adding a persistence profile

Answer: D

NEW QUESTION 111

The BIG-IP Administrator generates QKView using tmsh command "qkview -SO". In which directory does the BIG-IP appliance save the QKView?

- A. /etc/tmp
- B. /var/tmp
- C. /shared/qkview
- D. /var /tmp/qkview

Answer: B

NEW QUESTION 116

Assume a BIG-IP has no NATs or SNATs configured. Which two scenarios are possible when client traffic arrives on a BIG-IP that is NOT destined to a self-IP? (Choose two.)

- A. If the destination of the traffic does not match a virtual server, the traffic will be discarded.
- B. If the destination of the traffic does not match a virtual server, the traffic will be forwarded based on routing tables.
- C. If the destination of the traffic matches a virtual server, the traffic will be processed per the virtual server definition.
- D. If the destination of the traffic matches a virtual server, the traffic will be forwarded, but it cannot be loadbalanced since no SNAT has been configured.

Answer: AC

NEW QUESTION 120

An LTM device has a virtual server mapped to www5f.com with a pool assigned. The objects are defined as follows:

Virtual server. Destination 192.168.245.100.443 netmask 255.255.255.0 Persistence: Source address persistence netmask 255.0.0.0 SNAT:AutoMap

Profiles: HnP/TCP

How should the BIG-IP Administrator modify the persistence profile so that each unique IP address creates a persistence record?

- A. netmask 0.0.0.0
- B. netmask 255.255.255.255
- C. netmask 255.255.0.0
- D. netmask 255.256.255.0

Answer: B

NEW QUESTION 122

A virtual server is listening at 10.10.1.100:any and has the following iRule associated with it: when CLIENT_ACCEPTED { if {[TCP::local_port] equals 21 } { pool ftppool } elseif {[TCP::local_port] equals 23 } { pool telnetpool } }

If a user connects to 10.10.1.100 and port 22, which pool will receive the request?

- A. ftppool
- B. telnetpool
- C. Non
- D. The request will be dropped.
- E. Unknow
- F. The pool cannot be determined from the information provided.

Answer: D

NEW QUESTION 127

An ecommerce company is experiencing latency issues with online shops during Black Friday's peak season. The BIG-IP Administrator detects an overall high CPU load on the BIG-IP device and wants to move the top utilized Virtual Servers to a dedicated BIG-IP device.

Where should the BIG-IP Administrator determine the problematic Virtual Servers?

- A. System > Plattform
- B. Local Traffic > Virtual Servers > Virtual Server List
- C. Local Traffic > Network Map
- D. Statistics > Module Statistics > Local Traffic > Virtual Servers

Answer: D

NEW QUESTION 128

How is MAC masquerading configured?

- A. Specify the desired MAC address for each VLAN for which you want this feature enabled.
- B. Specify the desired MAC address for each selfIP address for which you want this feature enabled.
- C. Specify the desired MAC address for each VLAN on the active system and synchronize the systems.
- D. Specify the desired MAC address for each floating selfIP address for which you want this feature enabled.

Answer: A

NEW QUESTION 130

Generally speaking, should the monitor templates be used as production monitors or should they be customized prior to use.

- A. Most templates, such as http and tcp, are as effective as customized monitors.
- B. Monitor template customization is only a matter of preference, not an issue of effectiveness or performance.
- C. Most templates, such as https, should have the receive rule customized to make the monitor more robust.
- D. While some templates, such as ftp, must be customized, those that can be used without modification are not improved by specific changes.

Answer: C

NEW QUESTION 135

Which three properties can be assigned to nodes? (Choose three.)

- A. ratio values
- B. priority values
- C. health monitors
- D. connection limits
- E. loadbalancing mode

Answer: ACD

NEW QUESTION 136

Users are unable to reach an application. The BIG-IP Administrator checks the Configuration Utility and observes that the Virtual Server has a red diamond in front of the status. What is causing this issue?

- A. All pool members are down.
- B. The Virtual Server is receiving HTTPS traffic over HTTP virtual.
- C. The Virtual Server is disabled.
- D. All pool members have been disabled.

Answer: A

NEW QUESTION 138

Which statement describes a typical purpose of iRules?

- A. iRules can be used to add individual control characters to an HTTP data stream.
- B. iRules can be used to update the timers on monitors as a server load changes.
- C. iRules can examine a server response and remove it from a pool if the response is unexpected.
- D. iRules can be used to look at client requests and server responses to choose a pool member to select for load balancing

Answer: A

NEW QUESTION 140

Assume a virtual server has a ServerSSL profile. What SSL certificates are required on the pool members?

- A. No SSL certificates are required on the pool members.
- B. The pool members.SSL certificates must only exist.
- C. The pool members.SSL certificates must be issued from a certificate authority.
- D. The pool members.SSL certificates must be created within the company hosting the BIGIPs.

Answer: B

NEW QUESTION 141

A BIG-IP Administrator is setting up a new BIG-IP device. The network administrator reports that the interface has an incompatible media speed. The BIG-IP Administrator needs to change this setting manually.

From which location should the BIG-IP Administrator perform this task?

- A. On the Front Console
- B. In the TMOS Shell Command line
- C. In the Configuration Utility, Network > Interface
- D. In the Configuration Utility, System > Configuration

Answer: C

NEW QUESTION 143

The incoming client IP address is 195.64.45.52 and the last five connections have been sent to members A, C, E, D and B. Given the virtual server, pool, and persistence definitions and statistics shown in the above graphic, which member will be used for the next connection?

- A. 10.10.20.1:80
- B. 10.10.20.2:80
- C. 10.10.20.3:80
- D. 10.10.20.4:80
- E. 10.10.20.5:80
- F. It cannot be determined with the information given.

Answer: C

NEW QUESTION 146

What should the BIG-IP Administrator provide when opening a new ticket with F5 Support?

- A. bigip.license file
- B. QKViewfile

- C. Device root password
- D. SSL private keys

Answer: B

NEW QUESTION 151

A user wants to use the iHealth Upgrade Advisor to determine any issues with upgrading TMOS from 13.0 to 13.1. Where can the user generate the QKView to upload to iHealth?

- A. System > Software Management
- B. System > Archives
- C. System > Configuration
- D. System > Support

Answer: D

NEW QUESTION 153

As a part of the Setup Utility, the administrator sets the host name for the BIG IP. What would be the result if the two systems in a redundant pair were set to the same host name?

- A. Host names do not matter in redundant pair communication.
- B. In a redundant pair, the two systems will always have the same host name.
- C. The parameter is synchronized between the systems.
- D. The first time the systems are synchronized the receiving system will be assigned the same self-IP addresses as the source system.
- E. When the administrator attempts to access the configuration utility using the host name, they will always connect to the active system.

Answer: C

NEW QUESTION 156

A Virtual Server uses an iRule to send traffic to pool members depending on the URI. The BIG-IP Administrator needs to modify the pool member in the iRule. Which event declaration does the BIG-IP Administrator need to change to accomplish this?

- A. CLIENT_ACCEPTED
- B. HTTP_RESPONSE
- C. HTTP_REQUEST
- D. SERVER_CONNECTED

Answer: C

Explanation:

According to the URI distribution is the category of HTTP requests, need to trigger HTTP_REQUEST event.

NEW QUESTION 160

Given that VLAN failsafe is enabled on the external VLAN and the network that the active BIG-IP's external VLAN is connected to has failed, which statement is always true about the results?

- A. The active system will note the failure in the HA table.
- B. The active system will reboot and the standby system will go into active mode.
- C. The active system will failover and the standby system will go into active mode.
- D. The active system will restart the traffic management module to eliminate the possibility that BIG-IP is the cause for the network failure.

Answer: A

NEW QUESTION 161

A BIG-IP Administrator is receiving intermittent reports from users that SSL connections to the BIG-IP device are failing. Upon checking the log files, the BIG-IP Administrator notices the following error message:

ere tmm<instance>[<pid>]: 01260008:3: SSL transaction (TPS) rate limit reached

After reviewing statistics, the BIG-IP Administrator notices there are a maximum of 1200 client-side SSL TPS and a maximum of 800 server-side SSL TPS.

What is the minimum SSL license limit capacity the BIG-IP Administrator should upgrade to handle this peak?

- A. 2000
- B. 400
- C. 800
- D. 1200

Answer: D

NEW QUESTION 162

Refer to the exhibit.

```

root@(v1161) (cfg-sync Standalone) (Active) (/Common) (tmsh) # 1
ltm virtual http
  destination
  ip-protocol
  last-modified
  mask 255.255.255
  pool LAMP12
  profiles (
    http (
      mptcp-m
      stream
    )
  )
  source 0.0.0.0
  translate-address
  translate-port
  vs-index 10
}
root@(v1161) (cfg-sync Standalone) (Active) (/Common) (tmsh) # 1
ltm pool LAMP12
  members (
    10.1.20.11:http {
      address 10.1.
      session monit
      state up
    }
    10.1.20.12:http {
      address 10.1.
      session monit
      state up
    }
  )
  monitor tcp

```

A BIG-IP Administrator creates a new Virtual Server. The end user is unable to access the page. During troubleshooting, the administrator learns that the connection between the BIG-IP system and server is NOT set up correctly. What should the administrator do to solve this issue?

- A. Disable Address Translation
- B. Set Address Translation to Auto Map, configure a SNAT pool, and have pool members in the same subnet of the servers
- C. Set Address Translation to SNAT and configure a specific translation address
- D. Set Address Translation to SNAT and have self-IP configured in the same subnet of servers

Answer: C

Explanation:

The status of the pool can be seen that the members are all up, indicating that the network from F5 to the server is no problem, so there is no need to configure selfip on the same subnet. The monitor is normal but the access is not normal, you have to consider the problem of snat, you can configure automap or configure snat and specify snat ip.

NEW QUESTION 163

A BIG-IP Administrator needs to have a BIG-IP linked to two upstream switches for resilience of the external network. The network engineer who is going to configure the switch instructs the BIG-IP Administrator to configure interface binding with LACP. Which configuration should the administrator use?

- A. A virtual server with an LACP profile and the switches' management IPs as pool members.
- B. A virtual server with an LACP profile and the interfaces connected to the switches as pool members.
- C. A Trunk listing the allowed VLAN IDs and MAC addresses configured on the switches.
- D. A Trunk containing an interface connected to each switch.

Answer: D

NEW QUESTION 168

Which is an advantage of terminating SSL communication at the BIGIP rather than the ultimate web server?

- A. Terminating SSL at the BIG-IP can eliminate SSL processing at the web servers.
- B. Terminating SSL at IP the eliminates BIG all unencrypted traffic from the internal network.
- C. Terminating SSL at the BIG-IP eliminates the need to purchase SSL certificates from a certificate authority.
- D. Terminating SSL at the BIG-IP eliminates the need to use SSL acceleration hardware anywhere in the network.

Answer: A

NEW QUESTION 173

Assume a virtual server has a ServerSSL profile. What SSL certificates are required on the BIG-IP?

- A. No SSL certificates are required on the BIG-IP.
- B. The BIG-IP's SSL certificates must only exist.
- C. The BIG-IP's SSL certificates must be issued from a certificate authority.
- D. The BIG-IP's SSL certificates must be created within the company hosting the BIG-IPs.

Answer: A

NEW QUESTION 174

How should a BIG-IP Administrator persistent sessions from being sent to a pool member so that the server administrator can perform maintenance?

- A. force the pool member offline
- B. disable the pool member
- C. add an additional monitor to the pool
- D. disable the virtual server

Answer: A

NEW QUESTION 179

A BIG-IP Administrator is working with a BIG-IP device and discovers that one of the Interfaces on a Trunk is DOWN. What is the reason for this Interface status?

- A. The switch is NOT connected to the Interface
- B. There is NO transceiver installed on the Interface
- C. There is NO default route configured for this trunk
- D. The media speed of the interface has NOT been set

Answer: A

NEW QUESTION 181

In the BIG-IP Configuration Utility, a user requests a single screen view to determine the status of all Virtual Servers and associated pool members, as well as any iRules in use. Where should the BIG-IP Administrator instruct the user to find this view?

- A. Local Traffic > Monitors
- B. Local Traffic > Virtual Servers
- C. Local Traffic > Network Map
- D. Statistics

Answer: C

Explanation:

Network Map can display vs and its associated pool, pool member, and irule, can be retrieved, and can be quickly linked.

NEW QUESTION 185

A virtual server is listening at 10.10.1.100:80 and has the following iRule associated with it:

```
when HTTP_REQUEST { if { [HTTP::header UserAgent] contains "MSIE" }  
{ pool MSIE_pool }  
else { pool Mozilla_pool }
```

If a user connects to <http://10.10.1.100/foo.html> and their browser does not specify a UserAgent, which pool will receive the request?

- A. MSIE_pool
- B. Mozilla_pool
- C. Non
- D. The request will be dropped.
- E. Unknow
- F. The pool cannot be determined from the information provided.

Answer: B

NEW QUESTION 188

Assuming there are open connections through an active system's NAT and a fail over occurs, by default, what happens to those connections?

- A. All open connections will be lost.
- B. All open connections will be maintained.
- C. The "Mirror" option must be chosen on the NAT and the setting synchronized prior to the connection establishment.
- D. Longlived connections such as Telnet and FTP will be maintained while shortlived connections such as HTTP will be lost.
- E. All open connections are lost, but new connections are initiated by the newly active BIG IP, resulting in minimal client downtime.

Answer: B

NEW QUESTION 189

The BIG-IP Administrator needs to ensure the correct health monitor is being used for a new HTTP pool named P_example. Where should the BIG-IP Administrator validate these settings in the Configuration Utility?

- A. Local Traffic > Nodes > Default Monitor
- B. Local Traffic > Profiles > Services > HTTP > http
- C. Local Traffic > Monitors > http
- D. Local Traffic > Pools > P_example

Answer: D

NEW QUESTION 191

Assume a client's traffic is being processed only by a NAT; no SNAT or virtual server processing takes place. Also assume that the NAT definition specifies a NAT address and an origin address while all other settings are left at their defaults. If a client were to initiate traffic to the NAT address, what changes, if any, would take place when the BIG-IP processes such packets?

- A. The source address would not change, but the destination address would be translated to the origin address.
- B. The destination address would not change, but the source address would be translated to the origin address.
- C. The source address would not change, but the destination address would be translated to the NAT's address.
- D. The destination address would not change, but the source address would be translated to the NAT's address.

Answer: A

NEW QUESTION 195

Which two methods can be used to determine which BIG-IP is currently active? (Choose two.)

- A. The bigtop command displays the status.
- B. Only the active system's configuration screens are active.
- C. The status (Active/Standby) is embedded in the command prompt.
- D. The ifconfig a command displays the floating addresses on the active system.

Answer: AC

NEW QUESTION 199

A BIG-IP Administrator plans to resolve a non-critical issue with a BIG-IP device in 2 weeks. What Severity level should be assigned to this type of F5 support ticket?

- A. 4
- B. 2
- C. 3
- D. 1

Answer: A

NEW QUESTION 203

A standard virtual server has been associated with a pool with multiple members. Assuming all other settings are left at their defaults, which statement is always true concerning traffic processed by the virtual server?

- A. The client IP address is unchanged between the client side connection and the serverside connection.
- B. The server IP address is unchanged between the client side connection and the serverside connection.
- C. The TCP ports used in the client side connection are the same as the TCP ports serverside connection.
- D. The IP addresses used in the clientside connection are the same as the IP addresses used in the serverside connection.

Answer: A

NEW QUESTION 207

Which type of Virtual Server requires the use of a FastL4 profile?

- A. Performance (Layer 4)
- B. Stateless
- C. Performance (HTTP)
- D. Standard

Answer: A

NEW QUESTION 208

Which method is recommended for creating a new user from the CLI?

- A. Run `f5adduser username` then `'f5passwd username'` from bash or tmsh
- B. Run `tmsh create auth user username prompt for password` from bash
- C. edit `bigip.conf` to add the new user and the user's clear-text password
- D. Run `useradd username` then `'passwd username'` from bash tmsh

Answer: B

NEW QUESTION 211

The BIG-IP Administrator configures an HTTP monitor with a specific receive string. The status is marked 'down'. Which tool should the administrator use to identify the problem?

- A. Ping
- B. Health
- C. tcpdump
- D. ifconfig

Answer: C

NEW QUESTION 213

Refer to the exhibit

Name	Protocol	Port	Action
fwd_8080_vs	any	8080	Forwarding (IP)
fwd_vs	any	0 (Any)	Forwarding (IP)
host_8080_vs	1.1.1.0/24	8080	Standard
host_vs	1.1.1.1	0 (Any)	Standard

A connection is being established to IP 1.1.1.1 on port 8080. Which virtual server will handle the connection?

- A. fwd_8080_vs
- B. host_vs
- C. host_8080_VS
- D. fwdvs

Answer: B

NEW QUESTION 217

Refer to the exhibit.

Load Balancing

Default Pool: HTTP_Pool

Default Persistence Profile: None

Fallback Persistence Profile: None

Update

Local Traffic - Virtual Servers: Virtual Address List - 192.168.238.111

Properties

General Properties

Name: 192.168.238.111

Partition / Path: Common

Address: 192.168.238.111

Traffic Group: ☐ Inherit traffic group from current partition / path
 traffic-group-1 (floating)

Availability: ☐ Enabled

State: ☐ Enabled

Configuration

Advertise Route: When any virtual server is available

Connection Limit: 0

ARP: ☐ Enabled

An LTM device has a virtual server mapped to www.f5.com. Users report that when they connect to /resources/201.1.2h.l_l.com they are unable to receive content. What is the likely cause of the issue?

- A. The pool associated with the virtual server does not have priority group activation enabled.
- B. The virtual address does not have ARP enabled.
- C. The virtual address does not have route advertising enabled.
- D. The pool associated with the virtual server is failing its health check.

Answer: B

NEW QUESTION 222

A Standard Virtual Server for a web application is configured with Automap for the Source Address Translation option. The original source address of the client must be known by the backend servers. What should the BIG-IP Administrator configure to meet this requirement?

- A. The Virtual Server type as Performance (HTTP)
- B. An HTTP profile to insert the X-Forward-For header
- C. An HTTP Transparent profile
- D. A SNAT Pool with the client IP

Answer: B

Explanation:

Because it is a web application, you can insert the source IP in the xff field in the http profile.

NEW QUESTION 225

Assuming other failover settings are at their default state, what would occur if the failover cable were to be disconnected for five seconds and then reconnected?

- A. As long as network communication is not lost, no change will occur.
- B. Nothin
- C. Failover due to loss of voltage will not occur if the voltage is lost for less than ten seconds.
- D. When the cable is disconnected, both systems will become activ
- E. When the voltage is restored, unit two will revert to standby mode.
- F. When the cable is disconnected, both systems will become activ
- G. When the voltage is restored, both systems will maintain active mode.

Answer: C

NEW QUESTION 230

Refer to the exhibit.



How many nodes are represented on the network map shown?

- A. Four
- B. Three
- C. One
- D. Two

Answer: B

NEW QUESTION 235

Refer to the exhibit.

A BIG-IP Administrator configures a new VLAN on an HA pair of devices that does NOT yet have any traffic. This action causes the assigned traffic group to fail over to the standby device.

Which VLAN setting should be changed to prevent this issue?

- A. Auto Last Hop
- B. Fail-safe
- C. Customer Tag
- D. Source Check

Answer: B

NEW QUESTION 240

Which two statements are true concerning the default communication between a redundant pair of BIG-IP systems? (Choose two.)

- A. Synchronization occurs via a TCP connection using ports 683 and 684.
- B. Connection mirroring data is shared via a TCP connection using port 1028.
- C. Persistence mirroring data is shared via a TCP connection using port 1028.
- D. Connection mirroring data is shared through the serial fail over cable unless network failover is enabled.

Answer: BC

NEW QUESTION 241

Which two statements are true about NATs? (Choose two.)

- A. NATs support UDP, TCP, and ICMP traffic.
- B. NATs can be configured with mirroring enabled or disabled.
- C. NATs provide a one-to-one mapping between IP addresses.
- D. NATs provide a many-to-one mapping between IP addresses.

Answer: AC

NEW QUESTION 243

For a given Virtual Server, the BIG-IP must perform SSL Offload and negotiate secure communication over TLSv1.2 only. What should the BIG-IP Administrator do to meet this requirement?

- A. Configure a custom SSL Profile (Client) and select no TLSv1 in the options list
- B. Configure a custom SSL Profile (Client) with a custom TLSV1.2 cipher string
- C. Configure a custom SSL Profile (Server) and select no TLSv1 in the options list
- D. Configure a custom SSL Profile (Server) with a custom TLSV1.2 cipher string

Answer: B

Explanation:

no TLSv1 only disables TLS1.0, TLS1.1 is still used and does not meet the requirements.

NEW QUESTION 244

A BIG-IP Administrator assigns the default http health monitor to a pool that has three members listening on port 80. When the administrator connects to each pool member via the CURL utility, two of the members respond with a status of 404 Not Found while the third responds with 200 OK. What will the pool show for member availability?

- A. All members offline.
- B. Two members offline and one member online.
- C. Two members online and one member offline.
- D. All members online.

Answer: D

NEW QUESTION 249

The BIG-IP Administrator needs to perform a BIG-IP device upgrade to the latest version of TMOS. Where can the administrator obtain F5 documentation on upgrade requirements?

- A. AskF5
- B. DevCentral
- C. Bug Tracker
- D. iHealth

Answer: A

NEW QUESTION 253

A BIG-IP Administrator must determine if a Virtual Address is configured to fail over to the standby member of a device group in which area of the Configuration Utility can this be confirmed?

- A. Device Management > Traffic Groups
- B. Device Management > Devices
- C. Local Traffic > Virtual Servers
- D. Device Management > Overview

Answer: C

NEW QUESTION 258

A BIG-IP Administrator needs to find which modules have been licensed for use on the BIG-IP system. In which section of the Configuration Utility can the BIG-IP Administrator find this information?

- A. System > Services
- B. System > Resource Provisioning
- C. System > Platform
- D. System > Support

Answer: B

NEW QUESTION 263

Refer to the exhibit.

Which two pool members should be chosen for a new connection? (Choose two.)

- A. 172.16.15.9.80
- B. 172.16.15.4.80
- C. 172.10.15.2.80

- D. 172.16.15.1.80
- E. 172.16.15.7.80

Answer: BE

NEW QUESTION 264

A virtual server is configured to offload SSL from a pool of backend servers. When users connect to the virtual server, they successfully establish an SSL connection but no content is displayed. A packet trace performed on the server shows that the server receives and responds to the request. What should a BIG-IP Administrator do to resolve the problem?

- A. enable Server SSL profile
- B. disable Server SSL profile
- C. disable SNAT
- D. enable SNAT

Answer: B

NEW QUESTION 265

An IT support engineer needs to access and modify Virtual Servers in three partitions (Common /Banking and Dev) daily on a BIG-IP device. The company operates a Least Privilege access policy. What level of access does the IT support engineer need to ensure completion of daily roles?

- A. Manager in /common/Banking, and /Dev partitions
- B. Application Editor in /Common, /Banking, and /Dev partitions
- C. Manager in all partitions
- D. Application Editor in all partitions

Answer: A

NEW QUESTION 268

Which three statements describe a characteristic of profiles? (Choose three.)

- A. Default profiles cannot be created or deleted.
- B. Custom profiles are always based on a parent profile.
- C. A profile can be a child of one profile and a parent of another.
- D. All changes to parent profiles are propagated to their child profiles.
- E. While most virtual servers have at least one profile associated with them, it is not required.

Answer: ABC

NEW QUESTION 271

Users report that traffic is negatively affected every time a BIG-IP device fails over. The traffic becomes stabilized after a few minutes. What should the BIG-IP Administrator do to reduce the impact of future failovers?

- A. Enable Failover Multicast Configuration
- B. Set up Failover Method to HA Order
- C. Configure MAC Masquerade
- D. Configure a global SNAT Listener

Answer: C

NEW QUESTION 273

A BIG-IP Administrator configures a node with a standard icmp Health Monitor. The Node shows as DOWN although the Backend Server is configured to answer ICMP requests. Which step should the administrator take next to find the root cause of this issue?

- A. Run a curl Run a qkview
- B. Run a qkview
- C. Runatcpdump
- D. Runanssldump

Answer: C

NEW QUESTION 276

Which action will take place when a failover trigger is detected by the active system?

- A. The active device will take the action specified for the failure.
- B. The standby device also detects the failure and assumes the active role.
- C. The active device will wait for all connections to terminate and then failover.
- D. The standby device will begin processing virtual servers that have failed, but the active device will continue servicing the functional virtual servers.

Answer: A

NEW QUESTION 281

Which cookie persistence method requires the fewest configuration changes on the web servers to be implemented correctly?

- A. insert

- B. rewrite
- C. passive
- D. session

Answer: A

NEW QUESTION 283

Assume a virtual server is configured with a ClientSSL profile. What would the result be if the virtual server's destination port were not 443?

- A. SSL termination could not be performed if the virtual server's port was not port 443.
- B. Virtual servers with a ClientSSL profile are always configured with a destination port of 443.
- C. As long as client traffic was directed to the alternate port, the virtual server would work as intended.
- D. Since the virtual server is associated with a ClientSSL profile, it will always process traffic sent to port 443.

Answer: C

NEW QUESTION 285

A BIG-IP Administrator needs to restore a UCS file to an F5 device using the Configuration Utility. Which section of the Configuration Utility should the BIG-IP Administrator access to perform this task?

- A. Local Traffic > Virtual Servers
- B. Local Traffic > Policies
- C. System > Archives
- D. System > Configuration

Answer: C

NEW QUESTION 286

A local user account (Users) on the BIG-IP device is assigned the User Manager role. User1 attempts to modify the properties of another account (User2), but the action fails. The BIG-IP Administrator can successfully modify the User2 account.

Assuming the principle of least privilege, what is the correct way to allow User 1 to modify User2 properties?

- A. Move User2 to the same partition as User1
- B. Grant User1 administrative privileges
- C. Move User to the same partition as User2.
- D. Modify the partition access for User 1

Answer: D

NEW QUESTION 291

Which two statements describe differences between the active and standby systems? (Choose two.)

- A. Monitors are performed only by the active system.
- B. Failover triggers only cause changes on the active system.
- C. Virtual server addresses are hosted only by the active system.
- D. Configuration changes can only be made on the active system.
- E. Floating selfIP addresses are hosted only by the active system.

Answer: CE

NEW QUESTION 295

A BIG-IP Administrator needs to configure the BIG-IP system to perform load balancing for FTP servers running passive mode FTP. How should the administrator configure the Virtual Server to perform this load balancing?

- A. A Standard Virtual Server + FTP profile
- B. A Forwarding Virtual Server
- C. A Performance Layer 4 Virtual Server + FTP profile
- D. A Message Routing Virtual Server

Answer: A

NEW QUESTION 297

Which statement is true concerning SNATs using automap?

- A. Only specified self-IP addresses are used as automap addresses.
- B. SNATs using automap will translate all client addresses to an automap address.
- C. A SNAT using automap will preferentially use a floating self-IP over a nonfloating self-IP.
- D. A SNAT using automap can be used to translate the source address of all outgoing traffic to the same address regardless of which VLAN the traffic is sent through.

Answer: C

NEW QUESTION 298

Which must be sent to the license server to generate a new license?

- A. the system's dossier
- B. the system's host name
- C. the system's base license
- D. the system's purchase order number

Answer: A

NEW QUESTION 299

The BIG-IP Administrator disable all pool members in a pool Users are still able to reach the pool members.
What is allowing users to continue to reach the disabled pool members?

- A. A slow to time on Pool
- B. A persistence profile on the Virtual Server
- C. A slow ramp time on virtual Server
- D. A persistence profile on the Pool

Answer: B

NEW QUESTION 304

What is required for a virtual server to support clients whose traffic arrives on the internal VLAN and pool members whose traffic arrives on the external VLAN?

- A. That support is never available.
- B. The virtual server must be enabled for both VLANs.
- C. The virtual server must be enabled on the internal VLAN.
- D. The virtual server must be enabled on the external VLAN.

Answer: C

NEW QUESTION 309

.....

Thank You for Trying Our Product

We offer two products:

1st - We have Practice Tests Software with Actual Exam Questions

2nd - Questions and Answers in PDF Format

201 Practice Exam Features:

- * 201 Questions and Answers Updated Frequently
- * 201 Practice Questions Verified by Expert Senior Certified Staff
- * 201 Most Realistic Questions that Guarantee you a Pass on Your FirstTry
- * 201 Practice Test Questions in Multiple Choice Formats and Updatesfor 1 Year

100% Actual & Verified — Instant Download, Please Click
[Order The 201 Practice Test Here](#)