

Cisco

Exam Questions 350-901

Developing Applications using Cisco Core Platforms & APIs



NEW QUESTION 1

How should a web application be designed to work on a platform where up to 1000 requests per second can be served?

- A. Use algorithms like random early detection to deny excessive requests.
- B. Set a per-user limit (for example, 5 requests/minute/user) and deny the requests from the users who have reached the limit.
- C. Only 1000 user connections are allowed; further connections are denied so that all connected users can be served.
- D. All requests are saved and processed one by one so that all users can be served eventually.

Answer: D

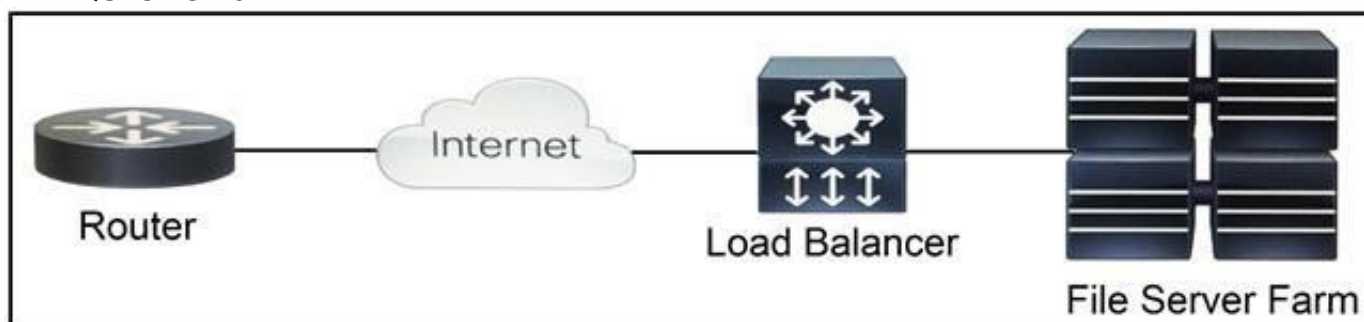
NEW QUESTION 2

Where should distributed load balancing occur in a horizontally scalable architecture?

- A. firewall-side/policy load balancing
- B. network-side/central load balancing
- C. service-side/remote load balancing
- D. client-side/local load balancing

Answer: B

NEW QUESTION 3



Refer to the exhibit. Which two functions are performed by the load balancer when it handles traffic originating from the Internet destined to an application hosted on the file server farm? (Choose two.)

- A. Terminate the TLS over the UDP connection from the router and originate an HTTPS connection to the selected server.
- B. Terminate the TLS over the UDP connection from the router and originate an HTTP connection to the selected server.
- C. Terminate the TLS over the TCP connection from the router and originate an HTTP connection to the selected server.
- D. Terminate the TLS over the TCP connection from the router and originate an HTTPS connection to the selected server.
- E. Terminate the TLS over the SCTP connection from the router and originate an HTTPS connection to the selected server.

Answer: DE

NEW QUESTION 4

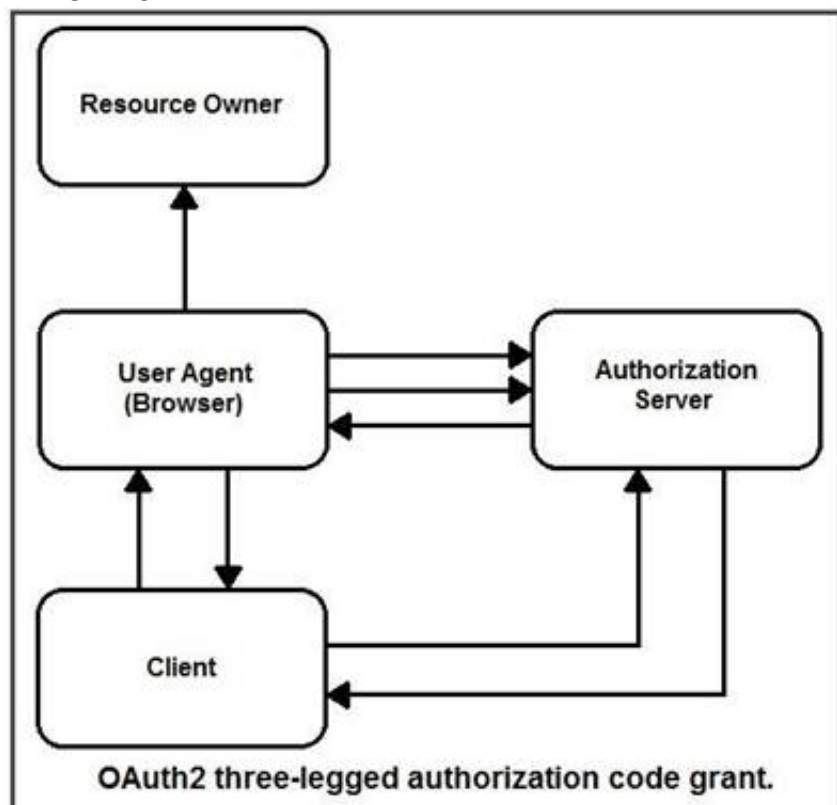
Which transport protocol is used by gNMI?

- A. HTTP/2
- B. HTTP 1.1
- C. SSH
- D. MQTT

Answer: A

NEW QUESTION 5

DRAG DROP



Refer to the exhibit. Drag and drop the steps from the left into the correct order of operation on the right for a successful OAuth2 three-legged authorization code grant flow.
Select and Place:

Answer Area

Client initiates the flow.	step 1
The authorization server authenticates the client, validates details sent, and responds with an access token.	step 2
The authorization server redirects the user-agent back to the client using the redirection URI provided.	step 3
The authorization server authenticates the resource owner.	step 4
The client requests an access token from the authorization server's token endpoint.	step 5

- A. Mastered
- B. Not Mastered

Answer: A

Explanation:

Answer Area

Client initiates the flow.	Client initiates the flow.
The authorization server authenticates the client, validates details sent, and responds with an access token.	The authorization server redirects the user-agent back to the client using the redirection URI provided.
The authorization server redirects the user-agent back to the client using the redirection URI provided.	The authorization server authenticates the resource owner.
The authorization server authenticates the resource owner.	The client requests an access token from the authorization server's token endpoint.
The client requests an access token from the authorization server's token endpoint.	The authorization server authenticates the client, validates details sent, and responds with an access token.

NEW QUESTION 6

A developer has completed the implementation of a REST API, but when it is executed, it returns a 401 error message. What must be done on the API to resolve the issue?

- A. Access permission to the resource must be granted, before the request.
- B. Configure new valid credentials.
- C. The requested API endpoint does not exist, and the request URL must be changed.
- D. Additional permission must be granted before the request can submitted.

Answer: D

NEW QUESTION 7

Refer to the exhibit. The cURL POST request creates an OAuth access token for authentication with FDM API requests. What is the purpose of the file “@token_data” that cURL is handling?

- A. This file is a container to log possible error responses in the request.
- B. This file is given as input to store the access token received from FDM.
- C. This file is used to send authentication related headers.
- D. This file contains raw data that is needed for token authentication.

Answer: B

NEW QUESTION 8

A client is written that uses a REST API to interact with a server. Using HTTPS as the transport, an HTTP request is sent and received an HTTP response. The response contains the HTTP response status code: 503 Service Unavailable. Which action is the appropriate response?

- A. Add an Authorization header that supplies appropriate credentials and sends the updated request.
- B. Resend the request using HTTP as the transport instead of HTTPS.
- C. Add an Accept header that indicates the content types that the client understands and send the updated request.
- D. Look for a Retry-After header in the response and resend the request after the amount of time indicated.

Answer: A

NEW QUESTION 9

Which snippet presents the correct API call to configure, secure, and enable an SSID using the Meraki API?

- A. `curl -X PUT \`
`--url 'https://api.meraki.com/api/v0/networks/:networkId/ssids/2' \`
`-H 'X-Cisco-Meraki-API-Key: 15da0c6ffff295f16267f88f98694cf29a86ed87' \`
`-H 'Accept: application/json' \`
`-H 'Content-type: application/json' \`
`--data-raw '{`
`"name": "My SSID",`
`"enabled": false,`
`"authMode": "psk",`
`"encryptionMode": "wpa",`
`"psk": "meraki123",`
`"wpaEncryptionMode": "WPA1 and WPA2"`
`}'`
- B. `curl -X PUT \`
`--url 'https://api.meraki.com/api/v0/networks/:networkId/ssids/2' \`
`-H 'X-Cisco-Meraki-API-Key: 15da0c6ffff295f16267f88f98694cf29a86ed87' \`
`-H 'Accept: application/json' \`
`-H 'Content-type: application/json' \`
`--data-raw '{`
`"name": "My SSID",`
`"enabled": true,`
`"authMode": "psk",`
`"encryptionMode": "wpa",`
`"psk": "meraki123",`
`"wpaEncryptionMode": "WPA1 and WPA2"`
`}'`
- C. `curl -X PUT \`
`--url 'https://api.meraki.com/api/v0/networks/:networkId/ssids/2' \`
`-H 'X-Cisco-Meraki-API-Key:`
`15da0c6ffff295f16267f88f98694cf29a86ed87' \`
`-H 'Accept: application/json' \`
`-H 'Content-type: application/json' \`
`--data-raw '{`
`"enabled": true,`
`"useVlanTagging": true`
`}'`
- D. `curl -X PUT \`
`--url 'https://api.meraki.com/api/v0/networks/:networkId/ssids/2' \`
`-H 'X-Cisco-Meraki-API-Key: 15da0c6ffff295f16267f88f98694cf29a86ed87' \`
`-H 'Accept: application/json' \`
`-H 'Content-type: application/json' \`
`--data-raw '{`
`"name": "My SSID",`
`"enabled": true,`
`}`
`'`

Answer: B

NEW QUESTION 10

The UCS Python SDK includes modules for Service Profile template creation. Which two UCS Service Profile template types are supported? (Choose two.)

- A. initial-template
- B. updating-template
- C. abstract-template
- D. attached-template
- E. base-template

Answer: AB

NEW QUESTION 10

A container running a Python script is failing when it reaches the integration testing phase of the CI/CD process. The code has been reviewed thoroughly and the build process works on this container and all other containers pass unit and integration testing. What should be verified to resolve the issue?

- A. that the correct port is exposed in the Dockerfile
- B. that the necessary modules and packages are installed on build

- C. that the script is running from the night directory
- D. that the Python version of the container image is correct

Answer: B

NEW QUESTION 13

Which two types of storage are supported for app hosting on a Cisco Catalyst 9000 Series Switch? (Choose two.)

- A. external USB storage
- B. internal SSD
- C. CD-ROM
- D. SD-card
- E. bootflash

Answer: AB

NEW QUESTION 16

On a Cisco Catalyst 9300 Series Switch, the guest shell is being used to create a service within a container. Which change is needed to allow the service to have external access?

- A. Apply ip nat overload on VirtualPortGroup0.
- B. Apply ip nat inside on Interface VirtualPortGroup0.
- C. Apply ip nat outside on Interface VirtualPortGroup0.
- D. Apply ip nat inside on Interface GigabitEthernet1.

Answer: B

NEW QUESTION 19

```
headers = ( _____ )
try:
    response = requests.get("https://sandboxdnac.cisco.com/dna/intent/api/v1/wireless/profile",
        headers=headers, verify=False)
except requests.exceptions.RequestException as cerror:
    print("Error processing request", cerror)
    sys.exit(1)
```

Refer to the exhibit. Which code snippet is required in the headers to successfully authorize wireless information from Cisco DNA Center?

- A. headers = {'X-auth-token':'fa8426a0-8eaf-4d22-8e13-7c1b16a9370c'} B.headers = {'Authorization':'Basic YWRtaW46R3JhcGV2aW5IMQ=='}
B. headers = {'Authorization':'Bearer ASDNFALKJER23412RKDALSNKF'}
- C. headers = {'Content-type':'application/json'}

Answer: A

NEW QUESTION 22

```
node 'default' {
  cisco_yang netconf { 'my-config':
    target => '<vrf xmlns='http://cisco.com/ns/yang/Cisco-IOS-XR-infra-rsi-cfg'>',
    source => '<vrf xmlns='http://cisco.com/ns/yang/Cisco-IOS-XR-infra-rsi-cfg'>
      <vrf>
        <vrf-name>VOIP</vrf-name>
        <create/>
        <description>Voice over IP</description>
        <vpn-id>
          <vpn-oui>875</vpn-oui>
          <vpn-index>3</vpn-index>
        </vpn-id>
      </vrf>
      <vrf>
        <vrf-name>INTERNET</vrf-name>
        <create/>
        <description>Generic external traffic</description>
        <vpn-id>
          <vpn-oui>875</vpn-oui>
          <vpn-index>22</vpn-index>
        </vpn-id>
      </vrf>
    </vrf>
  }
  mode => [ ],
  force => [ ],
}
```

Refer to the exhibit. This script uses ciscoyang to configure two VRF instances on a Cisco IOS-XR device using the Yang NETCONF type. Which two words are required to complete the script? (Choose two.)

- A. ensure
- B. commit
- C. false
- D. replace
- E. none

Answer: CD

NEW QUESTION 23

There is a requirement to securely store unique usernames and passwords. Given a valid username, it is also required to validate that the password provided is

correct. Which action accomplishes this task?

- A. Encrypt the username, hash the password, and store these values.
- B. Hash the username, hash the password, and store these values.
- C. Encrypt the username, encrypt the password, and store these values.
- D. Hash the username, encrypt the password, and store these values.

Answer: A

NEW QUESTION 25

While developing an application following the 12-factor app methodology, which approach should be used in the application for logging?

- A. Write a log to a file in the application directory.
- B. Write a log to a file in /var/log.
- C. Write the logs buffered to stdout.
- D. Write the logs unbuffered to stdout.

Answer: D

NEW QUESTION 28

A developer has just completed the configuration of an API that connects sensitive internal systems. Based on company policies, the security of the data is a high priority. Which approach must be taken to secure API keys and passwords?

- A. Embed them directly in the code.
- B. Store them in a hidden file.
- C. Store them inside the source tree of the application.
- D. Change them periodically.

Answer: D

NEW QUESTION 32

Which two principles are included in the codebase tenet of the 12-factor app methodology? (Choose two.)

- A. An application is always tracked in a version control system.
- B. There are multiple codebases per application.
- C. The codebase is the same across all deploys.
- D. There can be a many-to-one correlation between codebase and application.
- E. It is only possible to have one application deployment per codebase.

Answer: AE

NEW QUESTION 36

```
FROM alpine:3.7
RUN apk add --no-cache bash
```

Refer to the exhibit. Which additional line results in the output of Test 1 upon execution of the docker run --rm devnet 1 command in a Dockerfile with this content?

- A. CMD ["/bin/echo", "Test"]
- B. RUN ["/bin/echo", "Test"]
- C. ENTRYPOINT ["/bin/echo", "Test"]
- D. CMD ["/bin/echo Test"]

Answer: A

NEW QUESTION 37

```
apiVersion: v1
clusters:
- cluster:
  certificate-authority: fake-ca-file
  server: https://1.2.3.4
  name: development
- cluster:
  insecure-skip-tls-verify: true
  server: https://5.6.7.8
  name: scratch
contexts:
- context:
  cluster: development
  namespace: frontend
  user: developer
  name: dev-frontend
- context:
  cluster: development
  namespace: storage
  user: developer
  name: dev-storage
- context:
  cluster: scratch
  namespace: default
  user: experimenter
  name: exp-scratch
current context: ""
kind: Config
preferences: {}
users:
- name: developer
  user:
    client-certificate: fake-cert-file
    client-key: fake-key-file
- name: experimenter
  user:
    password: some-password
    username: exp
```

Refer to the exhibit. A kubeconfig file to manage access to clusters is provided. How many clusters are defined and which of them are accessed using username/password authentication versus certificate?

- A. two clusters; scratch
- B. three clusters; scratch
- C. three clusters; development
- D. two clusters; development

Answer: C

NEW QUESTION 38

The response from a server includes the header ETag: W/"7eb8b94419e371767916ef13e0d6e63d". Which statement is true?

- A. The ETag has a Strong validator directive.
- B. The ETag has a Weak validator directive, which is an optional directive.
- C. The ETag has a Weak validator directive, which is a mandatory directive.
- D. The ETag has a Strong validator directive, which it is incorrectly formatted.

Answer: B

NEW QUESTION 39

Which database type should be used to store data received from model- driven telemetry?

- A. BigQuery database
- B. Time series database
- C. NoSQL database
- D. PostgreSQL database

Answer: B

NEW QUESTION 44

```
name: VRFs
ios_vrf:
  vrfs: "{{ local_vrfs }}"
  state: present
  purge: yes
```

Refer to the exhibit. The YAML represented is using the ios_vrf module. As part of the Ansible playbook workflow, what is the result when this task is run?

- A. VRFs not defined in the host_vars file are removed from the device.
- B. VRFs not defined in the host_vars file are added to the device, and any other VRFs on the device remain.
- C. VRFs defined in the host_vars file are removed from the device.
- D. VRFs are added to the device from the host_vars file, and any other VRFs on the device are removed.

Answer: D

NEW QUESTION 45

```
- name: Configure Interfaces
  with_items: "{{ interfaces }}"
  netconf_config:
    <<: *host_info
    xml: |
      <config>
        <interfaces xmlns="urn:ietf:params:xml:ns:yang:ietf-interfaces">
          <interface>
            <name>{{item.interface_type}}{{item.interface_id}}</name>
            <description>{{item.description}}</description>
            <type xmlns:ianaift="urn:ietf:params:xml:ns:yang:iana-if-type">ianaift:ethernetCsmacd</type>
            <enabled>true</enabled>
            <ipv4 xmlns="urn:ietf:params:xml:ns:yang:ietf-ip">
              <address>
                <ip>{{item.ip_address}}</ip>
                <netmask>{{item.subnet_mask}}</netmask>
              </address>
            </ipv4>
          </interface>
        </interfaces>
      </config>
```

Refer to the exhibit. As part of the Ansible playbook workflow, several new interfaces are being configured using the netconf_config module. The task references the interface variables that are unique per device. In which directory is the YAML file with these variables found?

- A. host_vars directory
- B. home directory
- C. group_vars directory
- D. current working directory

Answer: A

NEW QUESTION 50

Application sometimes store configuration as constants in the code, which is a violation of strict separation of configuration from code. Where should application configuration be stored?

- A. environment variables
- B. YAML files
- C. Python libraries
- D. Dockerfiles
- E. INI files

Answer: B

NEW QUESTION 53


```
import sys, requests

URL = "http://ios-xe-mgmt.cisco.com:9443"
USER = 'root'
PASS = 'C!isco0123'

url = URL + "/restconf/data/ietf-interfaces:interfaces-state"
headers = {'content-type': 'application/vnd.yang-data+json', 'accept':
           'application/yang-data+json'}

try:
    result = requests.get(url, auth=(USER,PASS), headers=headers)
    r_json = result.json()
    flagDown = 0
    for record in r_json["ietf-interfaces:interfaces"]["interface"]:
        print("{0:<35}".format("interface: " + record["name"]), end="")
        print("{0:<5}".format("ip: "), end="")
        if('address' in record["ietf-ip:ipv4"]):
            print("{0:<15}".format(record["ietf-ip:ipv4"]["address"][0]["ip"]), end="")
        else:
            print("{0:<15}".format(record["No IPv4"], end="")
            print("{0:<9}".format("status: "), end="")
            print(str(record["enabled"]))
            if(record["enabled"]==False):
                flagDown=1
    print("")
    if(flagDown):
        print("At least one interface is down")
    else:
        print("All interfaces are up")
except:
    print("Exception: " + str(sys.exc_info()[0]) + " " + str(sys.exc_info()[1]))
    print("Error: " + str(result.status_code), result.text)
```

Refer to the exhibit. What is the output of this IOS-XE configuration program?

- A. interface operational status in IPv6 addresses
- B. interface administrative status in IPv4 addresses
- C. interface operational status in IPv4 addresses
- D. interface administrative status in IPv6 addresses

Answer: D

NEW QUESTION 58

.....

Thank You for Trying Our Product

We offer two products:

1st - We have Practice Tests Software with Actual Exam Questions

2nd - Questions and Answers in PDF Format

350-901 Practice Exam Features:

- * 350-901 Questions and Answers Updated Frequently
- * 350-901 Practice Questions Verified by Expert Senior Certified Staff
- * 350-901 Most Realistic Questions that Guarantee you a Pass on Your First Try
- * 350-901 Practice Test Questions in Multiple Choice Formats and Updates for 1 Year

100% Actual & Verified — Instant Download, Please Click
[Order The 350-901 Practice Test Here](#)