

Cisco

Exam Questions 300-430

Implementing Cisco Enterprise Wireless Networks (ENWLSI)



NEW QUESTION 1

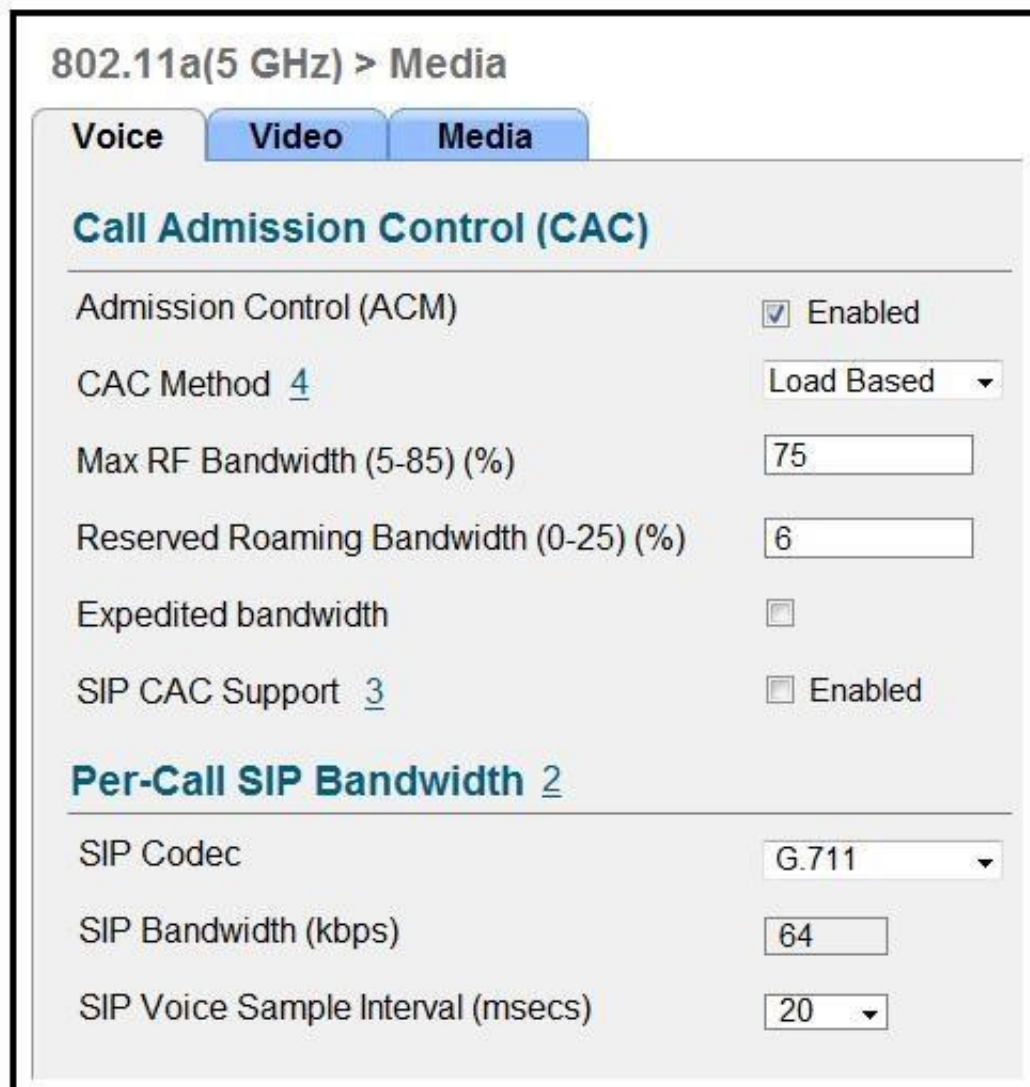
An engineer configures the wireless LAN controller to perform 802.1x user authentication. Which configuration must be enabled to ensure that client devices can connect to the wireless, even when WLC cannot communicate with the RADIUS?

- A. pre-authentication
- B. local EAP
- C. authentication caching
- D. Cisco Centralized Key Management

Answer: B

NEW QUESTION 2

Refer to the exhibit.



Which two items must be supported on the VoWLAN phones to take full advantage of this WLAN configuration? (Choose two.)

- A. TSPEC
- B. SIFS
- C. 802.11e
- D. WMM
- E. APSD

Answer: CD

NEW QUESTION 3

An engineer wants the wireless voice traffic class of service to be used to determine the queue order for packets received, and then have the differentiated services code point set to match when it is resent to another port on the switch. Which configuration is required in the network?

- A. Platinum QoS configured on the WLAN
- B. WMM set to required on the WLAN
- C. msl qos trust dscp configured on the controller switch port
- D. msl qos trust cos configured on the controller switch port

Answer: C

NEW QUESTION 4

An engineer must implement Cisco Identity-Based Networking Services at a remote site using ISE to dynamically assign groups of users to specific IP subnets. If the subnet assigned to a client is available at the remote site, then traffic must be offloaded locally, and subnets are unavailable at the remote site must be tunneled back to the WLC. Which feature meets these requirements?

- A. learn client IP address
- B. FlexConnect local authentication
- C. VLAN-based central switching
- D. central DHCP processing

Answer: C

NEW QUESTION 5

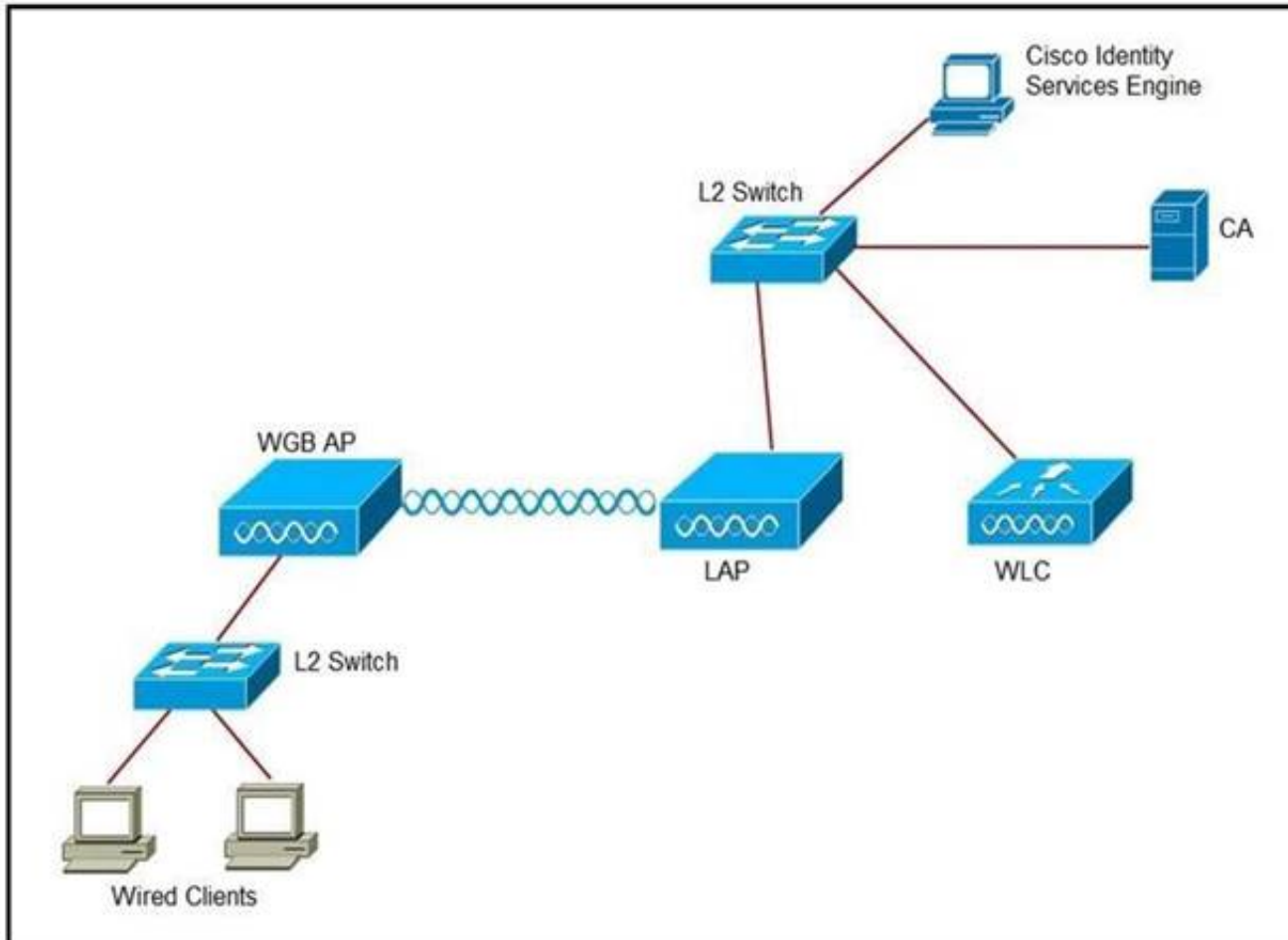
A network engineer observes a spike in controller CPU overhead and overall network utilization after multicast is enabled on a controller with 500 APs. Which feature connects the issue?

- A. controller IGMP snooping
- B. multicast AP multicast mode
- C. broadcast forwarding
- D. unicast AP multicast mode

Answer: B

NEW QUESTION 6

Refer to the exhibit. An engineer must connect a fork lift via a WGB to a wireless network and must authenticate the WGB certificate against the RADIUS server. Which three steps are required for this configuration? (Choose three.)



- A. Configure the certificate, WLAN, and radio interface on WGB.
- B. Configure the certificate on the WLC.
- C. Configure WLAN to authenticate using ISE.
- D. Configure the access point with the root certificate from ISE.
- E. Configure WGB as a network device in ISE.
- F. Configure a policy on ISE to allow devices to connect that validate the certificate.

Answer: ACF

NEW QUESTION 7

What is the default IEEE 802.1x AP authentication configuration on a Cisco Catalyst 9800 Series Wireless Controller?

- A. EAP-PEAP with 802.1x port authentication
- B. EAP-TLS with 802.1x port authentication
- C. EAP-FAST with CAPWAP DTLS + port authentication
- D. EAP-FAST with CAPWAP DTLS

Answer: C

NEW QUESTION 8

When using a Cisco Catalyst 9800 Series Wireless Controller, which statement about AutoQoS is true?

- A. It has a set of predefined profiles that you cannot modify further
- B. It matches traffic and assigns each matched packet to QoS groups
- C. It automates deployment of wired QoS and makes wireless QoS implementation easier
- D. It allows the output policy map to put specific QoS queues into specific subgroups

Answer: B

NEW QUESTION 9

What is the default NMSP echo interval between Cisco MSE and a Wireless LAN Controller?

- A. 10 seconds
- B. 15 seconds
- C. 30 seconds

D. 60 seconds

Answer: B

Explanation:

Reference: https://www.cisco.com/en/US/docs/wireless/mse/3350/6.0/CAS/configuration/guide/msecg_ch4_CAS.html

NEW QUESTION 10

When implementing self-registration for guest/BYOD devices, what happens when an employee tries to connect four devices to the network at the same time?

- A. The last device is removed and the newly added device is updated as active device.
- B. The registration is allowed, but only one device is connected at any given time.
- C. All devices are allowed on the network simultaneously.
- D. Purge time dictates how long a device is registered to the portal.

Answer: B

NEW QUESTION 10

A customer is experiencing performance issues with its wireless network and asks a wireless engineer to provide information about all sources of interference and their impacts to the wireless network over the past few days. Where can the requested information be accessed?

- A. CleanAir reports on Cisco Prime Infrastructure
- B. Performance reports on Cisco Prime Infrastructure
- C. Interference Devices reports on Cisco Wireless LAN Controller
- D. Air Quality reports on Cisco Wireless LAN Controller

Answer: A

NEW QUESTION 15

Which three characteristics of a rogue AP pose a high security risk? (Choose three.)

- A. open authentication
- B. high RSSI
- C. foreign SSID
- D. accepts clients
- E. low RSSI
- F. distant location

Answer: ACD

NEW QUESTION 20

An engineer must configure a Cisco WLC to support Cisco Aironet 600 Series OfficeExtend APs. Which two Layer 2 security options are supported in this environment? (Choose two.)

- A. Static WEP + 802.1X
- B. WPA+WPA2
- C. Static WEP
- D. CKIP
- E. 802.1X

Answer: BC

NEW QUESTION 24

During the EAP process and specifically related to the client authentication session, which encrypted key is sent from the RADIUS server to the access point?

- A. WPA key
- B. session key
- C. encryption key
- D. shared-secret key

Answer: B

NEW QUESTION 28

What is an important consideration when implementing a dual SSID design for BYOD?

- A. After using the provisioning SSID, an ACL that used to make the client switch SSIDs forces the user to associate and traverse the network by MAC filtering.
- B. If multiple WLCs are used, the WLAN IDs must be exact for the clients to be provisioned and traverse the network correctly.
- C. SSIDs for this setup must be configured with NAC State-RADIUS NAC for the clients to authenticate with Cisco ISE, or with NAC State-ISE NAC for Cisco ISE to associate the client.
- D. One SSID is for provisioning and the other SSID is for gaining access to the network.
- E. The use of an ACL should not be enforced to make the client connect to the REAL SSID after provisioning.

Answer: D

NEW QUESTION 31

Which two protocols are used to communicate between the Cisco MSE and the Cisco Prime Infrastructure network management software? (Choose two.)

- A. HTTPS
- B. Telnet
- C. SOAP
- D. SSH
- E. NMSP

Answer: AE

NEW QUESTION 36

An engineer is configuring multicast for wireless for an all-company video meeting on a network using EIGRP and BGP within a single domain from a single source. Which type of multicast routing should be implemented?

- A. Protocol Independent Multicast Dense Mode
- B. Source Specific Multicast
- C. Multicast Source Discovery Protocol
- D. Protocol Independent Multicast Sparse Mode

Answer: D

NEW QUESTION 41

Refer to the exhibit. A network administrator deploys the DHCP profiler service in two ISE servers: 10.3.10.101 and 10.3.10.102. All BYOD devices connecting to WLAN on VLAN63 have been incorrectly profiled and are assigned as unknown profiled endpoints. Which action efficiently rectifies the issue according to Cisco recommendations?

```
(Cisco WLC) >show dhcp proxy

DHCP ProxyBehaviour: enabled

!
interface Vlan63
 ip address 10.10.63.252/22
 description Dot1x_BYOD
 no shutdown
!
```

- A. Nothing needed to be added on the Cisco WLC or VLAN interface
- B. The ISE configuration must be fixed.
- C. Disable DHCP proxy on the Cisco WLC.
- D. Disable DHCP proxy on the Cisco WLC and run the ip helper-address command under the VLAN interface to point to DHCP and the two ISE servers.
- E. Keep DHCP proxy enabled on the Cisco WLC and define helper-address under the VLAN interface to point to the two ISE servers.

Answer: C

NEW QUESTION 42

Where is a Cisco OEAP enabled on a Cisco Catalyst 9800 Series Wireless Controller?

- A. RF Profile
- B. Flex Profile
- C. Policy Profile
- D. AP Join ProfileCorrect

Answer: B

Explanation:

Reference: https://www.cisco.com/c/en/us/td/docs/wireless/controller/9800/config-guide/b_wl_16_10_cg/flexconnect.html

NEW QUESTION 45

.....

Thank You for Trying Our Product

We offer two products:

1st - We have Practice Tests Software with Actual Exam Questions

2nd - Questions and Answers in PDF Format

300-430 Practice Exam Features:

- * 300-430 Questions and Answers Updated Frequently
- * 300-430 Practice Questions Verified by Expert Senior Certified Staff
- * 300-430 Most Realistic Questions that Guarantee you a Pass on Your First Try
- * 300-430 Practice Test Questions in Multiple Choice Formats and Updates for 1 Year

100% Actual & Verified — Instant Download, Please Click
[Order The 300-430 Practice Test Here](#)