

Exam Questions N10-007

CompTIA Network+ N10-007

<https://www.2passeasy.com/dumps/N10-007/>



NEW QUESTION 1

- (Exam Topic 1)

A UTM is deployed on the external edge of the main corporate office. The office connects to the WAN port of the edge router. The edge router at the main office connects to the remote offices using GRE IPSec tunnels. A network administrator notices that a worm that was not detected by the UTM has spread from the remote sites into the corporate network. The UTM currently has traffic rules applied that should block the port used by the worm. Which of the following steps would MOST likely correct this issue?

- A. Move the UTM onto the LAN side of the network
- B. Enable TLS inspection on the UTM
- C. Enable stateful inspection on the UTM
- D. Configure the UTM to deny encrypted files from being transferred

Answer: C

NEW QUESTION 2

- (Exam Topic 1)

A company has just refreshed the hardware in its datacenter with new 10G Ethernet switches wishes to set up a new storage area network but must use existing infrastructure. Which of the following storage standards should the technician use?

- A. iSCSI
- B. Fibre Channel
- C. NAS
- D. InfinBand

Answer: C

NEW QUESTION 3

- (Exam Topic 1)

A home user has purchased a new smart TV to stream online video services. The smart TV is unable to connect to the wireless network after several attempts. After from vacation, the home user tries again and can connect the TV to wireless network. However, the user notice a laptop is no longer able to connect to the network. Which of the following is the MOST likely cause?

- A. The DHCP scope has been exhausted.
- B. The security passcode has been changed
- C. The SSID is hidden.
- D. The AP configuration was reset.

Answer: A

NEW QUESTION 4

- (Exam Topic 1)

A new building needs to be joined to an existing network, but management has decided that running fiber is too expensive. Since the buildings are bout 1000ft (305m) apart, the IT department has been asked to propose alternatives. Which of the following is the BEST device to add to each building to facilitate the extension of the network while meeting budgetary demands?

- A. Switch
- B. Router
- C. Media converter
- D. PTP wireless

Answer: D

NEW QUESTION 5

- (Exam Topic 1)

A technician is installing a new wireless badging system on a hospital network. The requirements of the badging system are for it to have its own SSID and low power levels. The badging system has to cover 99.9% of the hospital. Which of the following is the BEST action to take to meet the system requirements?

- A. Install additional WAPs
- B. Install external antennas
- C. Move the WAPs closer to the more populated area
- D. Change the antenna types

Answer: A

NEW QUESTION 6

- (Exam Topic 1)

A company has contracted with an outside vendor to perform a service that will provide hardware, software, and procedures in case of a catastrophic failure of the primary datacenter. The Chief Information Officer (CIO) is concerned because this contract does not include a long-term strategy for extended outages. Which of the following should the CIO complete?

- A. Disaster recovery plan
- B. Business continuity plan
- C. Service level agreement
- D. First responder training

Answer: B

NEW QUESTION 7

- (Exam Topic 1)

A technician is sent to a remote office to set up a device to connect to the internet. The company Standard document requires stateful inspection.

Which of the following should the technician install?

- A. ROUTER
- B. Multilayer switch
- C. Firewall
- D. Bridge

Answer: C

NEW QUESTION 8

- (Exam Topic 1)

A network technician needs to set up an access method for Ann, a manager, to work from home. Ann needs to locally mapped corporate resources to perform her job. Which of the following would provide secure access to the corporate resources?

- A. Utilize an SSH connection to the corporate server.
- B. Use TFTP to transfer files to corporate resources.
- C. Allow RDP through an external firewall.
- D. Connect utilizing client-to-site VPN.

Answer: D

NEW QUESTION 9

- (Exam Topic 1)

Which of the following communication media can carry many voice, data, and video channels simultaneously over multiple frequencies?

- A. Broadband
- B. Baseband
- C. Analog modem
- D. CSMA

Answer: A

NEW QUESTION 10

- (Exam Topic 1)

A technician is assigned to secure a basic wireless network. Which of the following authentication protocol should the technician use to performed this task (select TWO).

- A. RDP
- B. SNMP
- C. WPA2
- D. EAP SSL

Answer: CD

NEW QUESTION 10

- (Exam Topic 1)

A technician discovers that multiple switches require a major update. Which of the following policies should be followed?

- A. Change management policy
- B. Remote access policy
- C. Acceptable use policy
- D. Memorandum of understanding

Answer: A

NEW QUESTION 14

- (Exam Topic 1)

A router is set up to utilize RIPv2 to route traffic throughout the network. Which of the following routing metrics is used to determine the path?

- A. Distance
- B. bandwidth
- C. Speed
- D. hop count

Answer: D

NEW QUESTION 18

- (Exam Topic 1)

Which of the following are characteristics of jumbo frames? (Choose two.)

- A. Commonly used on SAN
- B. MTU size greater than 1500

- C. MTU size greater than 10000
- D. Commonly used on IaaS
- E. MTU size greater than 12000

Answer: AB

NEW QUESTION 21

- (Exam Topic 1)

A network engineer planning for wireless connectivity in large office building. Currently, the office building contains both legacy and newer devices. Which of the following wireless network routers should engineer select for the fastest throughput for all wireless devices in the office building?

- A. 802.11ac
- B. 802.11b
- C. 802.11g
- D. 802.11n

Answer: A

Explanation:

<https://www.forbes.com/forbes/welcome/?toURL=https://www.forbes.com/sites/gordonkelly/2014/12/30/802-11>

NEW QUESTION 23

- (Exam Topic 1)

A network technician has to integrate three legacy industrial devices into the existing wireless network. The devices only support 802.11b and TKIP. Which of the following should the technician do to connect these devices to the wireless network with the restrictive settings while not affecting the performance of the other users? (Select Two).

- A. Create a second SSID that uses WPA personal.
- B. Change the encryption to WPA@ personal.
- C. Enable MAC filtering.
- D. Change the encryption to WPA2 Enterprise.

Answer: D

NEW QUESTION 28

- (Exam Topic 1)

802.11 n clients currently have no way to connect to the network. Which of the following devices should be implemented to let the clients connect?

- A. Router
- B. Range extender
- C. VoIP endpoint
- D. Access point

Answer: D

NEW QUESTION 32

- (Exam Topic 1)

A network technician downloaded new firmware for the company firewall. Which of the following should the network technician verify to ensure the downloaded file is correct and complete?

- A. File hash
- B. File date
- C. File type
- D. File size

Answer: A

NEW QUESTION 35

- (Exam Topic 1)

Which of the following provides the ability to deploy consistent access point configurations from a central location?

- A. Wireless controller
- B. AAA server
- C. WiFi-protected setup
- D. Proxy server
- E. VPN concentrator

Answer: A

NEW QUESTION 38

- (Exam Topic 1)

Which of the following is the correct port number for NTP?

- A. 25
- B. 69
- C. 123
- D. 161

Answer: C

NEW QUESTION 41

- (Exam Topic 1)

A company dedicates deploy customer –facing, touch-screen kiosks. The kiosks appear to have several open service ports that potentially became compromised. Which of the following is the MOST effective way to protect the kiosk?

- A. Install an IDS to monitor all traffic to and from the kiosk.
- B. install honeypots on the network to detect and analyze potential kiosks attacks before they occur.
- C. Enable switchport security on the ports to which the kiosks are connected to prevent network level attacks.
- D. Create a new segment with ACLs, limiting kiosks traffic with the internal network

Answer: A

NEW QUESTION 43

- (Exam Topic 1)

Which of the following datacenter security methodologies is MOST likely to remain usable during a network outage?

- A. biometric scanners
- B. door locks
- C. video surveillance
- D. motion detectors

Answer: B

NEW QUESTION 46

- (Exam Topic 1)

A network administrator would like to collect information from several networking devices using SNMP. Which of the following SNMP options should a network administrator use to ensure the data transferred is confidential?

- A. authpriv
- B. SHA
- C. MD5
- D. Authentication passphrase

Answer: A

NEW QUESTION 51

- (Exam Topic 1)

A disgruntled employee decides to leak critical information about a company's new product. The employee places keyloggers on the department's computers, allowing the information to be sent out to the Internet. Which of the following attacks is occurring?

- A. Man-in-the-middle
- B. Logic bomb
- C. Insider threat
- D. Social engineering

Answer: C

NEW QUESTION 53

- (Exam Topic 1)

A typical cell tower will have microwave and cellular antennas. Which of the following network topologies do these represent? (Choose two.)

- A. Point-to-multipoint
- B. Bus
- C. Point-to-point
- D. Mesh
- E. Peer-peer
- F. Ring

Answer: CD

NEW QUESTION 57

- (Exam Topic 1)

A network administrator is testing connectivity at a new corporate site. The site has a wireless guest as well as a wired employee network. After verifying connectivity, the administrator checks link speeds by using a speed testing website. The speed testing website shows lower download and upload speeds for the wired network than the wireless network. Which of the following is the MOST likely explanation?

- A. There is less local congestion on the wireless network
- B. The testing server for the wired network was farther away
- C. The firewall is configured to throttle traffic to specific websites
- D. The wireless access points were misconfigured

Answer: B

NEW QUESTION 59

- (Exam Topic 1)

A network technician is working on a new switch implementation to expand the network. Which of the following is the BEST option to ensure the implementation goes according to business requirements?

- A. AUP
- B. NDA
- C. SOP
- D. SLA

Answer: C

NEW QUESTION 64

- (Exam Topic 1)

A system administrator receives report from users of odd behavior in regard to recently installed server. While reviewing the server network configuration, the systems administrator does both a forward and a reverse DNS lookup on the host, along with the network adapter configuration.

```
$ host server.company.com
server.company.com has address 129.168.0.100
server.company.com is handled by 100 mail.company.com
$ host 192.168.0.100
100.0.168.192.in-addr.arpa domain name pointer web.company.com
$ host web.company.com
server.company.com has address 129.168.0.50
server.company.com is handled by 100 mail.company.com
$ ifconfig -a
eth0Link encap:Ethernet HWaddr 00:30:48:9D:06:73
Inet addr:192.168.0.100 Bcast:192.168.0.255 Mask:255.255.255.0
UP BROADCAST RUNNING MULTICAST MTU:1500 Metric:1
lo0Link encap:Local Loopback
inet addr:127.0.0.1 Mask:255.0.0.0
UP LOOPBACK RUNNING MTU:16436 Metric:1
```

Which of the following is the problem identified in the output above?

- A. There is no reverse DNS entry for this host.
- B. The server IP address is incorrectly configured.
- C. The DNS lookup entry is incorrectly configured.
- D. The reverse DNS entry is pointing to a different host.

Answer: C

NEW QUESTION 65

- (Exam Topic 1)

A network technician wants to remotely and securely access the desktop of a Linux workstation. The desktop is running remote control software without encryption. Which of the following should the technician use to secure the connection?

- A. SSH in tunnel mode
- B. RDP set to console connection
- C. EAP-PEAP
- D. SFTP

Answer: A

NEW QUESTION 70

- (Exam Topic 1)

An assistant systems analyst reports the following findings of an investigation of slow Internet connections in a remote office to the senior systems analyst:

Device	CPU Utilization	Memory Utilization	Link Status
Router	5%	43%	Good
Firewall	92%	58%	Good
Switch 1	23%	32%	Good
Switch 2	8%	81%	Good

Which of the following devices is causing the issue?

- A. Router
- B. Firewall
- C. Switch 1
- D. Switch 2

Answer: B

NEW QUESTION 73

- (Exam Topic 1)

In which of the following scenarios should a technician use a cross-over cable to provide connectivity?

- A. PC to switch
- B. Switch to AP

- C. Router to switch
- D. Router to modem
- E. PC to PC

Answer: E

NEW QUESTION 75

- (Exam Topic 1)

A network technician notices the site-to-site VPN and Internet connection have not come back up at a branch office after a recent power outage. Which of the following is an out-of-band method the technician would MOST likely utilize to check the branch office's router status?

- A. Use a modem to console into the router
- B. Walk a user through troubleshooting the connection
- C. Travel to the branch office
- D. Hire a contractor to go on-site

Answer: A

NEW QUESTION 80

- (Exam Topic 1)

A technician is responsible for configuring a new firewall. The hardware team has already installed, powered, and connected the system. Which of the following types of documentation should the technician utilize to complete the task?

- A. Rack diagram
- B. IDF/MDF documentation
- C. Network performance baseline
- D. Logical and physical diagrams

Answer: D

NEW QUESTION 85

- (Exam Topic 1)

A junior technician is setting up a voice control device so the Chief Executive Officer (CEO) will be able to control various things in the office. Of which of the following types of local technologies is this an example?

- A. LAN
- B. WAN
- C. SAN
- D. PAN

Answer: D

NEW QUESTION 87

- (Exam Topic 1)

An office network consists of one two-port router connected to a 12-port switch. A four-port hub is also connected to the switch. On this particular network, which of the following is the number of collision domains that exist?

- A. 3
- B. 12
- C. 13
- D. 14
- E. 15

Answer: D

NEW QUESTION 88

- (Exam Topic 1)

A junior network technician is setting up a new email server on the company network. Which of the following default ports should the technician ensure is open on the firewall so the new email server can relay email?

- A. 23
- B. 25
- C. 110
- D. 143

Answer: B

NEW QUESTION 90

- (Exam Topic 1)

A firewall administrator is implementing a rule that directs HTTP traffic to an internal server listening on a non-standard socket. Which of the following types of rules is the administrator implementing?

- A. NAT
- B. PAT
- C. STP
- D. SNAT
- E. ARP

Answer: B

NEW QUESTION 93

- (Exam Topic 1)

The process of attempting to exploit a weakness in a network after being given permission by the company is known as:

- A. penetration testing
- B. vulnerability scanning
- C. reconnaissance
- D. social engineering

Answer: A

NEW QUESTION 96

- (Exam Topic 1)

Which of the following should a technician investigate when using a network baseline to troubleshoot?

- A. Tracing a network wire connectivity issue from the datacenter to a host.
- B. Determining if the server performance is degraded.
- C. Changes that have been made to the network configuration.
- D. Location of networking equipment in a rack.

Answer: B

NEW QUESTION 100

- (Exam Topic 1)

A network administrator has a monitoring system in place that is currently polling hundreds of network devices at regular intervals. The continuous polling is causing high CPU utilization on the server. Which of the following tasks should the administrator perform to resolve the CPU issue while maintaining full monitoring capabilities?

- A. Remove SNMP polling and configure SNMP traps on each network device
- B. Remove SNMP polling and implement snmpwalk on each network device
- C. Upgrade SNMP to the latest version to mitigate vulnerabilities
- D. Modify SNMP polling to poll only during business hours

Answer: A

NEW QUESTION 102

- (Exam Topic 1)

Which of the following WAN technologies utilizes the concept of virtual circuits and point-multipoint connections?

- A. ISDN
- B. MPLS
- C. PRI
- D. Broadband cable
- E. Frame relay

Answer: E

NEW QUESTION 106

- (Exam Topic 1)

An employee wishes to use a personal cell phone for work-related purposes, including storage of sensitive company data, during long business trips. Which of the following is needed to protect BOTH the employee and the company?

- A. An NDA ensuring work data stored on the personal phone remains confidential
- B. An AUP covering how a personal phone may be used for work matters
- C. A consent to monitoring policy covering company audits of the personal phone
- D. Real-time remote monitoring of the phone's activity and usage

Answer: D

NEW QUESTION 108

- (Exam Topic 1)

A network security technician observes multiple attempts to scan network hosts and devices. All the attempts originate from a single host on the network. Which of the following threats is MOST likely involved?

- A. Smurf attack
- B. Rogue AP
- C. Compromised system
- D. Unintentional DoS

Answer: C

NEW QUESTION 113

- (Exam Topic 1)

Ann, a network technician, has just installed a fiber switch in a datacenter. To run the fiber cabling, Ann plans the cable route over the top of the rack using the cable trays, down to the switch, coiling up any excess cable. As Ann configures the switch, she notices several messages in the logging buffer stating the receive signal of the SFP is too weak. Which of the following is MOST likely the cause of the errors in the logging buffer?

- A. Bend radius exceeded
- B. Fiber cable mismatch
- C. Fiber type mismatch
- D. Bad fiber switch

Answer: A

NEW QUESTION 114

- (Exam Topic 1)

A technician wants to prevent an unauthorized host from connecting to the network via Ethernet. Which of the following is a Layer 2 access control the technician should implement?

- A. Access control lists
- B. Captive portal
- C. WPA2
- D. Port security

Answer: D

NEW QUESTION 118

- (Exam Topic 1)

Which of the following protocols is associated with a three-way handshake?

- A. UDP
- B. ICMP
- C. GRE
- D. TCP

Answer: D

NEW QUESTION 122

- (Exam Topic 1)

A technician is replacing a switch at a branch office and discovers the existing backbone cable does not fit in the new switch. The fiber patch panel has circular connections. The new switch has a transceiver that accepts a smaller square adapter of two strands. Which of the following patch cables would the technician need to complete the installation?

- A. LC to SC
- B. SC to ST
- C. LC to ST
- D. ST to ST
- E. SC to SC

Answer: C

NEW QUESTION 126

- (Exam Topic 1)

A technician is replacing a failed SOHO router for a customer who has an existing, cable modem, and static IP address. The user has a web server that faces the Internet so users can visit and leave comments. Which of the following BEST describes the correct configuration for this customer's requirements?

- A. The modem is placed in bridge mode, the router is placed behind the modem, and the web server is placed behind the router.
- B. The router is placed in bridge mode, the modem is placed behind the router, and the web server is placed behind the modem.
- C. The web server is placed in bridge mode, the router is placed behind the server, and the modem is placed behind the router.
- D. The switch is placed in bridge mode, the modem is placed behind the switch, and the router is placed behind the modem.

Answer: A

NEW QUESTION 127

- (Exam Topic 1)

Which of the following VPN protocols establishes a secure session that can be initiated using a browser?

- A. IPSec
- B. SSL VPN
- C. PTP
- D. PPTP

Answer: B

NEW QUESTION 131

- (Exam Topic 1)

A network technician is configuring a wireless network at a branch office. Users at this office work with large files and must be able to access their files on the server quickly. Which of the following 802.11 standards provides the MOST bandwidth?

- A. a

- B. ac
- C. g
- D. n

Answer: B

NEW QUESTION 135

- (Exam Topic 1)

A network technician performs a wireless site survey at a company building and identifies that the cafeteria is not covered by a wireless signal. The cafeteria is located in a medium-size, square-shaped room. Which of the following types of WAP antenna should the technician install in the center of the cafeteria to provide the BEST coverage?

- A. Unidirectional
- B. Parabolic
- C. Omnidirectional
- D. Yagi

Answer: C

NEW QUESTION 139

- (Exam Topic 1)

A network engineer is configuring wireless access for guests at an organization. Access to other areas in the organization should not be accessible to guests. Which of the following represents the MOST secure method to configure guest access to the wireless network?

- A. Guests should log into a separate wireless network using a captive portal
- B. Guests should log into the current wireless network using credentials obtained upon entering the facility
- C. The existing wireless network should be configured to allow guest access
- D. An additional wireless network should be configured to allow guest access

Answer: A

NEW QUESTION 144

- (Exam Topic 1)

Multiple users are reporting that they are unable to access the network. The ENTIRE network is shown in the diagram. PCs are not statically assigned IP addresses. The following devices will display settings.

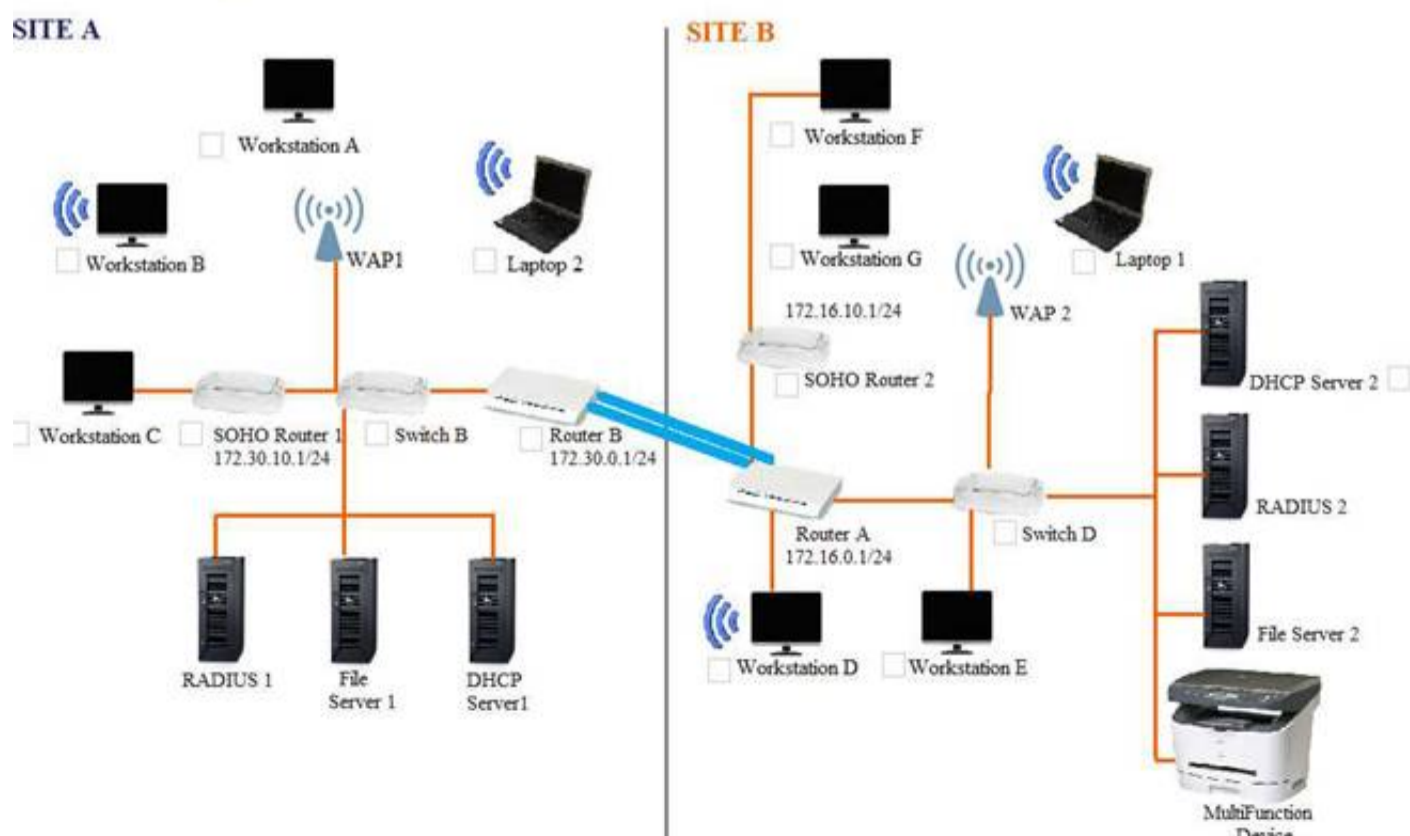
- WorkstationA
- WorkstationB
- WorkstationC
- WorkstationD
- WorkstationE
- WorkstationF
- WorkstationG
- Laptop1
- Laptop2
- DHCP server1
- DHCP server2

Review the settings and select the box in the diagram that identifies the device causing the issue. Only one device can be selected at a time.

After checking the device that is causing the issue, select the second tab in the lower left hand corner. Identify the reason as to why some users are unable to access the network.

Site A and B Network Diagram

Instructions: Only one device can be selected at a time. Please ensure you complete Part 1 and Part 2 of the simulation.



WORKSTATION A

IP Address	172.30.0.10
Netmask	255.255.255.0
Gateway	172.30.0.1

OK

WORKSTATION B

IP Address	172.30.0.14
Netmask	255.255.255.0
Gateway	172.30.0.1

OK

WORKSTATION C

IP Address	169.254.200.67
Netmask	255.255.255.0
Gateway	

OK

WORKSTATION D

IP Address	172.16.0.221
Netmask	255.255.255.0
Gateway	172.16.0.1

OK

WORKSTATION E

IP Address	172.16.0.21
Netmask	255.255.255.0
Gateway	172.16.0.1

OK

WORKSTATION F

IP Address	172.16.10.43
Netmask	255.255.255.0
Gateway	172.16.10.1

OK

WORKSTATION G

IP Address	172.16.10.120
Netmask	255.255.255.0
Gateway	172.16.10.1

OK

LAPTOP 1

IP Address	172.16.0.220
Netmask	255.255.255.0
Gateway	172.16.0.1

OK

LAPTOP 2

IP Address	172.30.0.12
Netmask	255.255.255.0
Gateway	172.30.0.1

OK

DHCP SERVER 1	
IP Address	172.30.0.5
Netmask	255.255.255.0
Gateway	172.30.0.1
DHCP Scope	172.30.0.10-250
Gateway	172.30.0.1
DNS Servers	10.200.2.20, 10.200.3.20
DHCP Lease Time	8 days
OK	

DHCP SERVER 2	
IP Address	172.30.0.5
Netmask	255.255.255.0
Gateway	172.16.0.1
DHCP Scope	172.16.0.10-250
Gateway	172.16.0.1
DNS Servers	10.200.2.20, 10.200.3.20
DHCP Lease Time	8 days
OK	

Part 2

Identify the reason as to why some users are unable to access the network.

- A. Workstation(s) are plugged into switch ports configured with half duplex.
- B. The site-to-site router was configured with the incorrect ACL.
- C. DHCP server scope is full and is not providing IP addresses.
- D. WAN and LAN ports are reversed on the router.
- E. STP had disabled some of the ports on the switch.
- F. The NIC driver is not installed.
- G. A wireless client is unable to associate to the AP.

Answer: G

NEW QUESTION 146

- (Exam Topic 1)

A technician is trying to configure a previously owned WAP. The technician successfully logs into the administrative console and attempts to input the IP address on the WAP. However, the WAP is not accepting the command. Which of the following is causing the problem?

- A. The WAP antenna is damaged
- B. The WAP transmitter light is dim
- C. The terminal emulation software is misconfigured
- D. The LWAPP image is installed on the WAP

Answer: C

NEW QUESTION 147

- (Exam Topic 1)

An end-user device requires a specific IP address every time it connects to the corporate network; however, corporate policy does not allow the use of static IP addresses. Which of the following will allow the request to be fulfilled without breaking the corporate policy?

- A. DHCP relay
- B. DHCP exclusion
- C. DHCP option
- D. DHCP reservation

Answer: D

NEW QUESTION 150

- (Exam Topic 1)

Joe, an employee at a large regional bank, wants to receive company email on his personal smartphone and table: To authenticate on the mail server, he must first a custom security application on those mobile services. Which of the following policies would BEST enforce this requirement?

- A. Incident response policy

- B. BYOD policy
- C. DLP policy
- D. Remote access policy

Answer: B

NEW QUESTION 153

- (Exam Topic 1)

Which of the following is networking stand-alone hardware that will permit any WIFI-compliant to connect to a wired network?

- A. Wireless hub
- B. Wireless firewall
- C. Wireless access point
- D. Wireless bridge

Answer: C

NEW QUESTION 158

- (Exam Topic 1)

Client PCs are unable to receive addressing information from a newly configured interface on a router. Which of the following should be added to allow the clients to connect?

- A. DHCP lease me
- B. IP helper
- C. TTL
- D. DNS record type

Answer: B

NEW QUESTION 159

- (Exam Topic 1)

An engineer is reviewing the implementation requirements for an upcoming project. The basic requirements identified by the customer include the following:

- ▶ WLAN architecture supporting speeds in excess of 150 Mbps
- ▶ Clientless remote network access
- ▶ Port-based network access control

Which of the following solution sets properly addresses all of the identified requirements?

- A. 802.11a, IPSec VPN, 802.1x
- B. 802.11ac, MPLS, 802.3
- C. 802.11b, PPTP, 802.1x
- D. 802.11g, MS-CHAP, 802.16
- E. 802.11n, SSL-VPN, 802.1x

Answer: E

NEW QUESTION 160

- (Exam Topic 1)

A technician is diagnosing an issue with a new T1 connection. The router is configured, the cable is connected, but the T1 is down. To verify the configuration of the router, which of the following tools should the technician use?

- A. Loopback adapter
- B. Cable tester
- C. Tone generator
- D. Multimeter

Answer: A

NEW QUESTION 164

- (Exam Topic 1)

A technician is connecting a router directly to a PC using the G1/0/1 interface. Without the use of auto-sensing ports, which of the following cables should be used?

- A. Straight-through
- B. Console
- C. Rollover
- D. Crossover

Answer: D

NEW QUESTION 167

- (Exam Topic 1)

A network technician needs to connect to a remote router to modify the configuration, Which of the following method should the technician use to connected to the device security? (Select TWO)

- A. Telnet
- B. VNC
- C. SSH

- D. RDP
- E. HTTPS
- F. TFTP

Answer: BC

NEW QUESTION 171

- (Exam Topic 1)

A customer cannot access a company's secure website. The company's network security is reviewing the firewall for the server and finds the following output:

Time	Action	Src IP	Src Port	Dst IP	Dst Port
0902	Allow	12.73.15.5	31865	10.5.0.10	80
1005	Deny	12.73.15.5	31866	10.5.0.10	443
1006	Deny	12.73.15.5	31890	10.5.0.10	443

Which of the following changes should be made to allow all customers to access the company's secure website?

- A. Allow any any 10.5.0.10 443
- B. Allow any any 12.73.15.5 443
- C. Allow 10.5.0.10 443 any any
- D. Allow 10.5.0.10 any 10.5.0.10 80

Answer: C

NEW QUESTION 175

- (Exam Topic 1)

A network technician needs to separate a web server listening on port 80 from the internal LAN and secure the server from the public Internet. The web server should be accessible to the public Internet over port 80 but not the private LAN. Currently, the network is segmented with a network-based firewall using the following IP addressing scheme on each interface:

Zone	Interface	IP Address
Public	eth0	10.0.0.1/24
DMZ	eth1	10.0.1.1/24
Private	eth2	10.0.2.1/24

Which of the following ones should the technician use to place the web server and which of the following firewall rules should the technician configure?

- A. Place the web server in the public zone with an inbound rule from eth0 interface to accept traffic over port 80 designated to the web server
- B. Place the web server in the DMZ with an inbound rule from eth0 interface to eth1 to accept traffic over port 80 designated to the web server
- C. Place the web server in the private zone with an inbound rule from eth2 interface to eth1 to accept traffic over port 80 designated to the web server
- D. Place the web server in the DMZ with an inbound rule from eth1 interface to eth0 to accept traffic over port 80 designated to the web server

Answer: B

NEW QUESTION 177

- (Exam Topic 1)

A technician is planning a remote-access strategy to manage routers and switches on a dedicated management network. The management network is segregated from the production network and uses site-to-site VPN connections. Some of the equipment does not support encryption. Which of the following should the technician choose that all the equipment would support?

- A. Telnet
- B. SSL
- C. SSH
- D. IPSec

Answer: A

NEW QUESTION 180

- (Exam Topic 1)

A technician notices clients are receiving a 169.254.x.x IP address following the upgrade of a server. Which of the following ports should the technician check on the local server firewall?

- A. ports 20 and 21
- B. ports 67 and 68
- C. ports 80 and 443
- D. port 123 and 8080

Answer: B

NEW QUESTION 182

- (Exam Topic 1)

Which of the following physical security controls is MOST likely to be susceptible to a false positive?

- A. Identification card
- B. Biometric device
- C. Proximity reader

D. Video camera

Answer: C

NEW QUESTION 183

- (Exam Topic 1)

A network technician has recently installed new VoIP phones at all employees' desks to support a new SIP cloud solution. However, the technician is unable to make a call from the device after testing. Which of the following should the technician verify?

- A. TCP 433 is allowed.
- B. UDP 1720 is allowed.
- C. UDP 50860 is allowed.
- D. UDP 5061 is allowed.
- E. TCP 8080 is allowed.
- F. TCP 8181 is allowed.

Answer: CD

NEW QUESTION 186

- (Exam Topic 1)

Which of the following will listen on the line to ensure there is no traffic transmitting and implement a back-off timer if a collision occurs?

- A. CSMA/CD
- B. CSMA/CA
- C. MPLS
- D. OSPF

Answer: A

NEW QUESTION 191

- (Exam Topic 1)

A single PRI can deliver multiple voice calls simultaneously using which of the following Layer 1 technologies?

- A. Time division multiplexing
- B. Analog circuit switching
- C. CSMA/CD
- D. Time division spread spectrum

Answer: A

NEW QUESTION 195

- (Exam Topic 1)

A web application is unable to authenticate customers so they can access their bills. The server administrator has tested the LDAP query but is not receiving results. Which of the following is the NEXT step the server administrator should take to correct the problem?

- A. Check port 636 to see if it being blocked.
- B. Change service port 636 to port 389.
- C. Restart the web server.
- D. Verify the browser is using port 443.

Answer: A

NEW QUESTION 196

- (Exam Topic 1)

A technician wants to deploy a network that will require wireless client devices to prompt for a username and password before granting access to be the wireless network. Which of the following must be configured to implement this solution?

- A. EAP-PEAP
- B. CCMP-AES
- C. WPA2-PSK
- D. TKIP-RC4

Answer: A

NEW QUESTION 199

- (Exam Topic 2)

Zach, a technician, is installing an 802.11n network. Which of the following should he disable to stop broadcasting the network name?

- A. Channel
- B. WEP
- C. SSID
- D. WPA

Answer: C

NEW QUESTION 202

- (Exam Topic 2)

Which of the following connector types would Sandy, a network technician, use to connect a serial cable?

- A. RJ-11
- B. BNC
- C. LC
- D. DB-9

Answer: D

NEW QUESTION 204

- (Exam Topic 2)

Jeff, an administrator, has just finished installing a new switch and connected two servers with IPs of 192.168.105.20 and .30. The servers are able to communicate with each other, but are unable to reach the Internet. Jeff sees the following information in the switch configuration:

interface VLAN 105

IP address 192.168.105.5 255.255.255.0

Jeff is able to ping the router at 192.168.105.1 from the switch. Which of the following is the MOST likely cause of the problem?

- A. The subnet mask is incorrect.
- B. A routing loop has occurred.
- C. Jeff used a crossover cable to connect the switch to the gateway.
- D. The server is missing default-gateway information.

Answer: D

NEW QUESTION 208

- (Exam Topic 2)

Which of the following cable types have a rated MAXIMUM bandwidth of 100Mbps?

- A. CAT3
- B. CAT5
- C. CAT5e
- D. CAT6

Answer: B

NEW QUESTION 213

- (Exam Topic 2)

A network technician is configuring a wireless network. To avoid interference from other wireless networks in the area, the technician should change which setting?

- A. Channel
- B. SSID
- C. Firewall rule
- D. Encryption

Answer: A

NEW QUESTION 215

- (Exam Topic 2)

Which of the following has a maximum transfer rate of 54Mbps and operates at the 5GHz frequency?

- A. 802.11a
- B. 802.11b
- C. 802.11g
- D. 802.11n

Answer: A

NEW QUESTION 216

- (Exam Topic 2)

Which of the following provides the use of a secure tunnel for telecommuting without manually installing and configuring encryption software?

- A. RDP
- B. SSL VPN
- C. ISAKMP
- D. TLS 2.0

Answer: B

NEW QUESTION 220

- (Exam Topic 2)

Which of the following provides the MOST protection against zero day attacks via email attachments?

- A. Anti-spam
- B. Anti-virus
- C. Host-based firewalls
- D. Patch management

Answer: A

NEW QUESTION 224

- (Exam Topic 2)

Which of the following BEST describes how a layer 2 switch functions?

- A. Switches packets within the same subnet based on MAC addresses
- B. Switches packets between different subnets based on IP addresses
- C. Switches packets between different subnets based on MAC addresses
- D. Switches packets between different subnets based on MAC addresses

Answer: A

NEW QUESTION 227

- (Exam Topic 2)

Jeff, a network engineer, is troubleshooting an issue where clients are not receiving IP addresses from a new, properly configured DHCP server on another subnet. Statically addressed clients can get onto the same network with no issues. Which of the following is causing the issue?

- A. Incorrect VLAN tagging
- B. Missing helper addresses
- C. Wrong default gateway
- D. Improper routing protocols

Answer: B

NEW QUESTION 228

- (Exam Topic 2)

In order to reduce spam email, Kim, a network administrator, changes the standard SMTP port from which of the following port numbers to port number 587?

- A. 20
- B. 21
- C. 23
- D. 25

Answer: D

NEW QUESTION 231

- (Exam Topic 2)

A computer on VLAN 10 with the IP address of 192.168.1.45/27 cannot ping a computer on VLAN 20 with the IP address of 192.168.1.65/27. Which configuration change will allow the PING to be successful?

- A. Replace the router with a Layer 2 switch that supports VLANs
- B. Change VLAN 20 computers Default Gateway to 192.168.1.127/27
- C. Change VLAN 10 computers Default Gateway to 192.168.1.32/27
- D. Allow ICMP to pass through the Router

Answer: D

NEW QUESTION 233

- (Exam Topic 2)

Which of the following protocols would Kurt, a technician, use to synchronize local date and time of a client workstation to that of a server?

- A. RTP
- B. NTP
- C. TFTP
- D. ARP

Answer: B

NEW QUESTION 238

- (Exam Topic 2)

Which of the following is characterized by an attacker attempting to map out an organization's staff hierarchy in order to send targeted emails?

- A. Whaling
- B. Impersonation
- C. Privilege escalation
- D. Spear phishing

Answer: A

NEW QUESTION 242

- (Exam Topic 2)

Which of the following will allow multiple frequencies to be combined?

- A. WiMAX

- B. MPLS
- C. MIMO
- D. Channel bonding

Answer: D

NEW QUESTION 244

- (Exam Topic 2)

A company has a large number of employees that need VPN access from home. Which of the following is the BEST solution for deploying and managing the remote access?

- A. Site-to-site VPN
- B. Network-based firewall
- C. SSL VPN
- D. Host-based firewall

Answer: C

NEW QUESTION 246

- (Exam Topic 2)

A user is unable to open up websites on the Internet from a browser. The administrator determines that the workstation can ping its local gateway, but not the remote web server. At which of the following layers of the OSI model does the problem MOST likely exist?

- A. Data link
- B. Network
- C. Session
- D. Physical

Answer: B

NEW QUESTION 247

- (Exam Topic 2)

Which of the following is an invalid MAC address?

- A. AA:CE:58:FD:90:08
- B. 44:98:3E:F8:33:23
- C. 56:AD:BX:89:55:54
- D. 94:9E:FE:EE:8C:DF

Answer: C

NEW QUESTION 249

- (Exam Topic 2)

Which of the following MUST be kept synchronized in order for Kerberos to work?

- A. Certificate
- B. Ticket
- C. Time
- D. Token

Answer: C

NEW QUESTION 253

- (Exam Topic 2)

Which of the following allows a technician to gather information about the operating system?

- A. Domain services
- B. Fingerprinting
- C. Countermeasures
- D. Reconnaissance

Answer: B

NEW QUESTION 254

- (Exam Topic 2)

A user is unable to print to a network printer. Which of following is the FIRST step that a technician should take to troubleshoot the issue?

- A. Identify the problem.
- B. Establish a plan of action to resolve the problem.
- C. Establish a theory of probable cause.
- D. Implement preventative measures.

Answer: A

NEW QUESTION 258

- (Exam Topic 2)

Which of the following ports does DHCP use? (Select TWO).

- A. 22
- B. 23
- C. 67
- D. 68
- E. 69

Answer: CD

NEW QUESTION 261

- (Exam Topic 2)

Which of the following is based ENTIRELY on using ICMP packets?

- A. Social engineering
- B. NMAP
- C. Buffer overflow attack
- D. Smurf attack

Answer: D

NEW QUESTION 262

- (Exam Topic 2)

Which of the following network topologies allows only communication to take place from one node at a time by passing a token around the network?

- A. Star
- B. Mesh
- C. Bus
- D. Ring

Answer: D

NEW QUESTION 265

- (Exam Topic 2)

A username provides which of the following?

- A. Biometrics
- B. Identification
- C. Authorization
- D. Authentication

Answer: B

NEW QUESTION 266

- (Exam Topic 2)

A firewall that operates at Layer 7 of the OSI model is known as a(n):

- A. Circuit gateway
- B. Packet filter
- C. Application level
- D. Redundant firewall

Answer: C

NEW QUESTION 267

- (Exam Topic 2)

A technician recently fixed a computer with several viruses and spyware programs on it and notices the Internet settings were set to redirect all traffic through an unknown proxy. This type of attack is known as which of the following?

- A. Phishing
- B. Social engineering
- C. Man-in-the-middle
- D. Shoulder surfing

Answer: C

NEW QUESTION 272

- (Exam Topic 2)

Which of the following ports should be allowed through a firewall to allow DNS resolution to occur to an outside DNS server?

- A. 20
- B. 53
- C. 80
- D. 3389

Answer: B

NEW QUESTION 274

- (Exam Topic 2)

The Transport Layer of the TCP/IP model corresponds to which of the following layers of the OSI model?

- A. 1
- B. 3
- C. 4
- D. 5

Answer: C

NEW QUESTION 278

- (Exam Topic 2)

Something you have, something you are, and something you know are the three tenets of:

- A. Social engineering
- B. Change management
- C. Remote access
- D. Access control

Answer: D

NEW QUESTION 279

- (Exam Topic 2)

A technician has replaced the Internet gateway router, and now no users can reach the Internet. The technician can ping the router Ethernet port but not the ISP's router IP address. Which of the following is the MOST likely problem?

- A. Faulty crossover cable
- B. DNS server is down
- C. Switching loop
- D. Outside interface shutdown

Answer: D

NEW QUESTION 284

- (Exam Topic 2)

Which of the following would Sandy, a technician, find in a network map?

- A. QoS standards
- B. MDF/IDFs
- C. System logs
- D. Firewall rules

Answer: B

NEW QUESTION 286

- (Exam Topic 2)

Which of the following describes a DNS server?

- A. Translates an IP address to a name
- B. Caches commonly viewed web pages
- C. Assigns IP addresses to network devices
- D. Provides port security for a network

Answer: A

NEW QUESTION 287

- (Exam Topic 3)

A national cable company providing TV, telephone, and Internet service to home users over its IP network, has been tracking a large increase of network bandwidth due to P2P file sharing. Which of the following should the company deploy to ensure excellent TV and telephone service?

- A. QoS
- B. Load balancing
- C. High availability
- D. Fiber optics

Answer: A

NEW QUESTION 291

- (Exam Topic 3)

Which of the following would Kim, a technician, do to monitor remote traffic through an access point?

- A. Enable an SNMP agent
- B. Enable network mapping
- C. Set monitoring SSID
- D. Select WPA2

Answer: A

NEW QUESTION 292

- (Exam Topic 3)

Which of the following BEST describes the difference between layer 2 switching and layer 2 routing?

- A. Switching moves packets between hosts on different subnets, and routing moves packets between hosts on the same subnet.
- B. Routing moves packets between hosts on different subnets, and switching moves packets between hosts on the same subnet.
- C. Both routing and switching move packets between hosts on the same subnet, but routing does so at a faster pace.
- D. Both routing and switching move packets between hosts on different subnets, but switching does so at a faster pace.

Answer: B

NEW QUESTION 296

- (Exam Topic 3)

A company only wants preapproved laptops to be able to connect to a wireless access point. Which of the following should be configured?

- A. SSID disable
- B. ACL rules
- C. WPA encryption
- D. MAC filtering

Answer: D

NEW QUESTION 298

- (Exam Topic 3)

A company is experiencing accessibility issues reaching services on a cloud-based system. Which of the following monitoring tools should be used to locate possible outages?

- A. Network analyzer
- B. Packet analyzer
- C. Protocol analyzer
- D. Network sniffer

Answer: A

Explanation:

A network analyzer is a useful tool, helping you do things like track traffic and malicious usage on the network.

NEW QUESTION 299

- (Exam Topic 3)

Zach, a technician, discovers a switch is not communicating with the other switches in a stack. Which of the following is the MOST likely cause?

- A. Both T568A and T568B standards are being used.
- B. STP is disabled.
- C. The cable is not a crossover.
- D. The port is not trunked.

Answer: C

NEW QUESTION 301

- (Exam Topic 3)

Which of the following methods for network performance optimization is used to distribute traffic among similar devices?

- A. Fault tolerance
- B. QoS
- C. Proxy server
- D. Load balancing

Answer: D

NEW QUESTION 305

- (Exam Topic 3)

An administrator hosts all of the company's virtual servers internally. In the event of total server failure, the server images can be restored on a cloud provider and accessed through the VPN.

Which of the following cloud services is the administrator using?

- A. Community PaaS
- B. Public IaaS
- C. Hybrid SaaS
- D. Private IaaS

Answer: B

NEW QUESTION 307

- (Exam Topic 3)

Which of the following is an example of two factor authentication?

- A. Password, device certificate and PIN
- B. SSL web server certificate and password
- C. User password and administrator password
- D. Password and hardware token OTP

Answer: D

NEW QUESTION 308

- (Exam Topic 3)

Which of the following tools can the technician use to analyze TCP/IP packets when trying to determine a connection problem within a subnet?

- A. Wire mapper
- B. Protocol analyzer
- C. Cable tester
- D. SYSLOG server

Answer: B

NEW QUESTION 312

- (Exam Topic 3)

Zach, a technician, is checking newly installed CAT5e cabling, and suspects that some of the ends were not properly terminated. Which of the following tools will verify this?

- A. Cable tester
- B. Toner probe
- C. OTDR
- D. Loopback plug

Answer: A

NEW QUESTION 316

- (Exam Topic 3)

Zach, a technician, needs to terminate a CAT5e Ethernet cable to a 110 block. Which of the following tools should he use?

- A. Toner probe
- B. Punch down
- C. Wire tester
- D. Crimper

Answer: B

NEW QUESTION 317

- (Exam Topic 3)

An administrator has received a recommendation against deploying WEP as a wireless encryption protection scheme. Which of the following is MOST likely the reason?

- A. WEP's IV is too small.
- B. WEP uses RC4 which is easily accessible and not secure.
- C. WEP uses plain text.
- D. WEP is not well supported.

Answer: A

NEW QUESTION 322

- (Exam Topic 3)

An administrator is setting up a secure wireless network. The administrator decides to support 802.11n and 802.11g with a WPA2 pre-shared key. Users are given the SSID with the pre-shared key, but the administrator has disabled the SSID broadcast and MAC filtering. Some users have reported connection issues. Which of the following would MOST likely resolve the users' connection issues?

- A. Limit the devices to 802.11n only.
- B. Enable the SSID broadcast.
- C. Enable MAC filtering.
- D. Use a WEP 128-bit key.

Answer: B

NEW QUESTION 324

- (Exam Topic 3)

A Windows server has a problem after booting up. Kim, a technician, should immediately check the:

- A. history logs.
- B. cron logs.
- C. application logs.
- D. system logs.

Answer: D

NEW QUESTION 328

- (Exam Topic 3)

Zach, a network technician, is unable to remotely manage or ping certain layer 2 switches. To manage those devices remotely, which of the following will MOST likely need to be configured?

- A. IP address on the native VLAN interface
- B. Port security
- C. Port forwarding
- D. IP address on the fiber interface

Answer: A

NEW QUESTION 330

- (Exam Topic 3)

A company has attempted to introduce a new major network segment to allow growth in capacity. On the core switch, a GBIC was used to interconnect with a newly placed downstream distribution switch for the first time. Soon after this implementation, a network flood and an outage occurred between the core and new distribution network modules. Which of the following should the network administrator troubleshoot FIRST in order to rectify the issue?

- A. Check for switching loops between core and distribution switches.
- B. Check whether an incorrect VLAN has been assigned to the new distribution switch.
- C. Check for inconsistent or missing routes between the core and distribution switches.
- D. Check whether the GBIC was set to multi-mode instead of single-mode SFP.

Answer: A

NEW QUESTION 335

- (Exam Topic 3)

When configuring a WAP for a SOHO, which parameter will BEST limit access to the office area?

- A. Signal strength
- B. SSID enable
- C. Encryption
- D. Password hardening

Answer: A

NEW QUESTION 340

- (Exam Topic 3)

A network technician is troubleshooting intermittent issues with VoIP call quality. A throughput tester can help assess the functionality of which of the following?

- A. LLDP
- B. VLAN tagging
- C. QoS
- D. SIP trunking

Answer: C

NEW QUESTION 341

- (Exam Topic 3)

When using high bandwidth applications over multiple WAN connections, which of the following should be used?

- A. Static IP addressing
- B. Half-duplex
- C. PoE devices
- D. Load balancing

Answer: D

NEW QUESTION 342

- (Exam Topic 3)

A technician replaces a customer's router, and is now unable to ping the ISP's gateway. Which of the following should the technician check?

- A. The arp table of the new customer's router.
- B. The route table of the next-hop router.
- C. The route table of the new customer's router.
- D. The arp table of a network user.

Answer: C

NEW QUESTION 343

- (Exam Topic 3)

A network technician performs several switch commands to enable various advanced features on the switch in the accounting department. During the configuration changes, several users from this department report connectivity issues. Which of the following logs would the network technician need to analyze to troubleshoot

the connectivity issues?

- A. Router logs
- B. History logs
- C. Startup/bootup config logs
- D. Event Viewer logs

Answer: B

NEW QUESTION 347

- (Exam Topic 3)

An 801.11g wireless access point was configured as follows:

- AP encryption forced to WPA2-AES mode only
- MAC address filtering enabled with the following MAC address in the allow list: 00-ab-29-da-c3-40 Which is true about the above configuration?

- A. Any 802.11b/g compatible client can connect to the wireless network if they support TKIP, the MAC address is 00-ab-29-da-c3-40, and the encryption key is known by the client.
- B. An 802.11a compatible client can connect to the wireless network only if its MAC address is 00- ab-29-da-c3-40 and the encryption key is known by the client.
- C. An 802.11n compatible client can connect to the wireless network only if its MAC address is 00- ab-29-da-c3-40 and the encryption key is known by the client.
- D. Any 802.11g compatible client can connect to the wireless network if the encryption key is known by the client.

Answer: C

NEW QUESTION 351

- (Exam Topic 3)

Which of the following media types can carry a standard Ethernet signal for network connectivity?

- A. USB
- B. PArallel
- C. Serial
- D. CAT6

Answer: D

NEW QUESTION 356

- (Exam Topic 3)

A user reports a network failure on a computer. The technician determines that the computer and NIC are operating properly. Which of the following tools can the technician use to trace the network cabling back to the punch down block?

- A. Protocol analyzer
- B. Multimeter
- C. Punch down tool
- D. Toner probe

Answer: D

NEW QUESTION 357

- (Exam Topic 3)

Two WAPs are positioned with overlapping coverage, but seamless roaming across them is not working. Which of the following should be checked?

- A. WPA should be enabled
- B. PKI should be turned off
- C. WAP SSIDs are matching
- D. WAPs are transmitting on same channel

Answer: C

NEW QUESTION 361

- (Exam Topic 3)

Which of the following technologies could be implemented to improve call clarity when using VoIP technology?

- A. Static IP addressing
- B. Caching engines
- C. QoS
- D. Port forwarding

Answer: C

NEW QUESTION 364

- (Exam Topic 3)

Jeff, a customer, has a wireless network and has reported that the network traffic from the wireless access points seems high compared to the limited number of wireless devices used. Jeff believes that other non-employees are using the wireless network to access the Internet. Which of the following could be used to limit the access to the wireless network? (Select TWO).

- A. WPA encryption
- B. Changing wireless channels

- C. MAC filtering
- D. Changing wireless speed standards
- E. SSID disable

Answer: AC

NEW QUESTION 367

- (Exam Topic 3)

A company decides to deploy customer-facing, touch-scan kiosks. The kiosks appear to have several open service ports that could potentially become compromised. Which of the following is the MOST effective way to protocol the kiosks?

- A. Install an IDS to monitor all traffic to and from the kiosks.
- B. Install honeypots on the network to detect and analyze potential kiosk attacks before they occur.
- C. Enable switchport security on the ports to which the kiosks are connected to prevent network –level attacks.
- D. Create a new network segment with ACLs, limiting kiosks' traffic with the internal network.

Answer: D

NEW QUESTION 371

- (Exam Topic 3)

Which of the following protocols is used for remote management of devices?

- A. SNMP
- B. TFTP
- C. Syslog
- D. SMTP

Answer: A

NEW QUESTION 372

- (Exam Topic 3)

A network administrator has created a virtual machine in the cloud. The technician would like to connect to the server remotely using RDP. Which of the following default ports needs to be opened?

- A. 445
- B. 3389
- C. 5004
- D. 5060

Answer: B

NEW QUESTION 375

- (Exam Topic 3)

Which of the following will prevent switching loops by selectively shutting down switch ports?

- A. RIP
- B. IGP
- C. STP
- D. VLAN

Answer: C

NEW QUESTION 379

- (Exam Topic 3)

An administrator is troubleshooting analog telephony issues on the punch down block. Which of the following tools would be MOST useful in this scenario?

- A. T1 loopback
- B. Butt set
- C. Multimeter
- D. Protocol analyzer

Answer: B

NEW QUESTION 382

- (Exam Topic 3)

A junior technician is settings up a voice control device so the Chief Executive Officer (CEO) will able to control various things in the office. Of which of the following types of the IoT technologies is this an example?

- A. LAN
- B. WAN
- C. SAN
- D. PAN

Answer: B

NEW QUESTION 386

- (Exam Topic 3)

A company is having a new T1 line installed. Which of the following will the connection MOST likely terminate to?

- A. Core switch
- B. MDF
- C. Ethernet router
- D. IDF

Answer: B

NEW QUESTION 388

.....

THANKS FOR TRYING THE DEMO OF OUR PRODUCT

Visit Our Site to Purchase the Full Set of Actual N10-007 Exam Questions With Answers.

We Also Provide Practice Exam Software That Simulates Real Exam Environment And Has Many Self-Assessment Features. Order the N10-007 Product From:

<https://www.2passeasy.com/dumps/N10-007/>

Money Back Guarantee

N10-007 Practice Exam Features:

- * N10-007 Questions and Answers Updated Frequently
- * N10-007 Practice Questions Verified by Expert Senior Certified Staff
- * N10-007 Most Realistic Questions that Guarantee you a Pass on Your FirstTry
- * N10-007 Practice Test Questions in Multiple Choice Formats and Updatesfor 1 Year