

## Exam Questions MS-500

Microsoft 365 Security Administrator

<https://www.2passeasy.com/dumps/MS-500/>



#### NEW QUESTION 1

You need to recommend a solution for the user administrators that meets the security requirements for auditing. Which blade should you recommend using from the Azure Active Directory admin center?

- A. Sign-ins
- B. Azure AD Identity Protection
- C. Authentication methods
- D. Access review

**Answer:** A

#### Explanation:

References:

<https://docs.microsoft.com/en-us/azure/active-directory/reports-monitoring/concept-sign-ins>

#### NEW QUESTION 2

You need to recommend a solution to protect the sign-ins of Admin1 and Admin2. What should you include in the recommendation?

- A. a device compliance policy
- B. an access review
- C. a user risk policy
- D. a sign-in risk policy

**Answer:** C

#### Explanation:

References:

<https://docs.microsoft.com/en-us/azure/active-directory/identity-protection/howto-user-risk-policy>

#### NEW QUESTION 3

##### HOTSPOT

You install Azure ATP sensors on domain controllers.

You add a member to the Domain Admins group. You view the timeline in Azure ATP and discover that information regarding the membership change is missing.

You need to meet the security requirements for Azure ATP reporting.

What should you configure? To answer, select the appropriate options in the answer area. NOTE: Each correct selection is worth one point.

Policy to edit:

	▼
Default Domain Controllers Policy	
Default Domain Policy	
A local policy on one domain controller	

Audit setting to configure:

	▼
Audit User Account Management	
Audit Computer Account Management	
Audit Other Account Management Events	
Audit Security Group Management	

- A. Mastered
- B. Not Mastered

**Answer:** A

#### Explanation:

References:

<https://docs.microsoft.com/en-us/azure-advanced-threat-protection/atp-advanced-audit-policy>

#### NEW QUESTION 4

You need to recommend a solution that meets the technical and security requirements for sharing data with the partners.

What should you include in the recommendation? Each correct answer presents part of the solution. NOTE: Each correct selection is worth one point.

- A. Create an access review.
- B. Assign the Global administrator role to User1.
- C. Assign the Guest inviter role to User1.
- D. Modify the External collaboration settings in the Azure Active Directory admin center.

**Answer:** AC

#### NEW QUESTION 5

You need to resolve the issue that targets the automated email messages to the IT team. Which tool should you run first?

- A. Synchronization Service Manager
- B. Azure AD Connect wizard

C. Synchronization Rules Editor  
D. IdFix

**Answer: B**

#### Explanation:

References:

<https://docs.microsoft.com/en-us/office365/enterprise/fix-problems-with-directory-synchronization>

Case Study: 2 Litware, Inc Overview

Litware, Inc. is a financial company that has 1,000 users in its main office in Chicago and 100 users in a branch office in San Francisco.

Existing Environment

Internal Network Infrastructure

The network contains a single domain forest. The forest functional level is Windows Server 2016. Users are subject to sign-in hour restrictions as defined in Active Directory.

The network has the IP address range shown in the following table.

Location	IP address range
Chicago office internal network	192.168.0.0/20
Chicago office perimeter network	172.16.0.0/24
Chicago office external network	131.107.83.0/28
San Francisco office internal network	192.168.16.0/20
San Francisco office perimeter network	172.16.16.0/24
San Francisco office external network	131.107.16.218/32

The offices connect by using Multiprotocol Label Switching (MPLS).

The following operating systems are used on the network:

- Windows Server 2016
- Windows 10 Enterprise
- Windows 8.1 Enterprise

The internal network contains the systems shown in the following table.

Office	Name	Configuration
Chicago	DC1	Domain controller
Chicago	DC2	Domain controller
San Francisco	DC3	Domain controller
Chicago	Server1	SIEM-server

Litware uses a third-party email system.

Cloud Infrastructure

Litware recently purchased Microsoft 365 subscription licenses for all users.

Microsoft Azure Active Directory (Azure AD) Connect is installed and uses the default authentication settings. User accounts are not yet synced to Azure AD.

You have the Microsoft 365 users and groups shown in the following table.

Name	Object type	Description
Group 1	Security group	A group for testing Azure and Microsoft 365 functionality
User1	User	A test user who is a member of Group1
User2	User	A test user who is a member of Group1
User3	User	A test user who is a member of Group1
User4	User	An administrator
Guest1	Guest user	A guest user

Planned Changes

Litware plans to implement the following changes: Migrate the email system to Microsoft Exchange Online Implement Azure AD Privileged Identity Management

Security Requirements

Litware identifies the following security requirements:

- Create a group named Group2 that will include all the Azure AD user accounts. Group2 will be used to provide limited access to Windows Analytics
- Create a group named Group3 that will be used to apply Azure Information Protection policies to pilot users. Group3 must only contain user accounts
- Use Azure Advanced Threat Protection (ATP) to detect any security threats that target the forest
- Prevent users locked out of Active Directory from signing in to Azure AD and Active Directory
- Implement a permanent eligible assignment of the Compliance administrator role for User1
- Integrate Windows Defender and Windows Defender ATP on domain-joined servers
- Prevent access to Azure resources for the guest user accounts by default
- Ensure that all domain-joined computers are registered to Azure AD

Multi-factor authentication (MFA) Requirements

Security features of Microsoft Office 365 and Azure will be tested by using pilot Azure user accounts. You identify the following requirements for testing MFA.

Pilot users must use MFA unless they are signing in from the internal network of the Chicago office. MFA must NOT be used on the Chicago office internal network.

If an authentication attempt is suspicious, MFA must be used, regardless of the user location Any disruption of legitimate authentication attempts must be minimized

General Requirements

Litware want to minimize the deployment of additional servers and services in the Active Directory forest.

#### NEW QUESTION 6

Which IP address space should you include in the MFA configuration?

- A. 131.107.83.0/28
- B. 192.168.16.0/20
- C. 172.16.0.0/24
- D. 192.168.0.0/20

**Answer: B**

## NEW QUESTION 7

You need to implement Windows Defender ATP to meet the security requirements. What should you do?

- A. Configure port mirroring
- B. Create the ForceDefenderPassiveMode registry setting
- C. Download and install the Microsoft Monitoring Agent
- D. Run WindowsDefenderATPOnboardingScript.cmd

**Answer: C**

### Explanation:

Case Study: 3 Contoso, Ltd Overview

Contoso, Ltd. is a consulting company that has a main office in Montreal and three branch offices in Seattle, and New York.

The company has the offices shown in the following table.

Location	Employees	Laptops	Desktops computers	Mobile devices
Montreal	2,500	2,800	300	3,100
Seattle	1,000	1,100	200	1,500
New York	300	320	30	400

Contoso has IT, human resources (HR), legal, marketing, and finance departments. Contoso uses Microsoft 365.

Existing Environment Infrastructure

The network contains an Active Directory domain named contoso.com that is synced to a Microsoft

Azure Active Directory (Azure AD) tenant. Password writeback is enabled.

The domain contains servers that run Windows Server 2016. The domain contains laptops and desktop computers that run Windows 10 Enterprise.

Each client computer has a single volume.

Each office connects to the Internet by using a NAT device. The offices have the IP addresses shown in the following table.

Location	IP address space	Public NAT segment
Montreal	10.10.0.0/16	190.15.1.0/24
Seattle	172.16.0.0/16	194.25.2.0/24
New York	192.168.0.0/16	198.35.3.0/24

Named locations are defined in Azure AD as shown in the following table.

Name	IP address range	Trusted
Montreal	10.10.0.0/16	Yes
New York	192.168.0.0/16	No

From the Multi-Factor Authentication page, an address space of 198.35.3.0/24 is defined in the trusted IPs list.

Azure Multi-Factor Authentication (MFA) is enabled for the users in the finance department. The tenant contains the users shown in the following table.

Name	User type	City	Role
User1	Member	Seattle	None
User2	Member	Sea	Password administrator
User3	Member	SEATTLE	None
User4	Guest	SEA	None
User5	Member	London	None
User6	Member	London	Customer LockBox Access Approver
User7	Member	Sydney	Reports reader
User8	Member	Sydney	User administrator
User9	Member	Montreal	None

The tenant contains the groups shown in the following table.

Name	Group type	Dynamic membership rule
ADGroup1	Security	User.city-contains "SEA"
ADGroup2	Office 365	User.city-match "Sea"

Customer Lockbox is enabled in Microsoft 365. Microsoft Intune Configuration

The devices enrolled in Intune are configured as shown in the following table.

Name	Platform	Encryption	Member of
Device1	Android	Disabled	GroupA, GroupC
Device2	Windows 10	Enabled	GroupB, GroupC
Device3	Android	Disabled	GroupB, GroupC
Device4	Windows 10	Disabled	GroupB
Device5	iOS	Not applicable	GroupA
Device6	Windows 10	Enabled	None

The device compliance policies in Intune are configured as shown in the following table.

Name	Platform	Encryption	Assigned
DevicePolicy1	Android	Not configured	Yes
DevicePolicy2	Windows 10	Required	Yes
DevicePolicy3	Android	Required	Yes



The device compliance policies have the assignments shown in the following table.

Name	Include	Exclude
DevicePolicy1	GroupC	None
DevicePolicy2	GroupB	GroupC
DevicePolicy3	GroupA	None

The Mark devices with no compliance policy assigned as setting is set to Compliant.

Requirements

Technical Requirements

Contoso identifies the following technical requirements:

- Use the principle of least privilege
- Enable User1 to assign the Reports reader role to users
- Ensure that User6 approves Customer Lockbox requests as quickly as possible
- Ensure that User9 can implement Azure AD Privileged Identity Management

NEW QUESTION 8

HOTSPOT

You are evaluating which finance department users will be prompted for Azure MFA credentials. For each of the following statements, select Yes if the statement is true. Otherwise, select No. NOTE: Each correct selection is worth one point.

Statements	Yes	No
A finance department user who has an IP address from the Montreal office will be prompted for Azure MFA credentials.	<input type="radio"/>	<input type="radio"/>
A finance department user who works from home and who has an IP address of 193.77.140.140 will be prompted for Azure MFA credentials.	<input type="radio"/>	<input type="radio"/>
A finance department user who has an IP address from the New York office will be prompted for Azure MFA credentials.	<input type="radio"/>	<input type="radio"/>

- A. Mastered  
B. Not Mastered

Answer: A

Explanation:

Statements	Yes	No
A finance department user who has an IP address from the Montreal office will be prompted for Azure MFA credentials.	<input type="radio"/>	<input checked="" type="radio"/>
A finance department user who works from home and who has an IP address of 193.77.140.140 will be prompted for Azure MFA credentials.	<input checked="" type="radio"/>	<input type="radio"/>
A finance department user who has an IP address from the New York office will be prompted for Azure MFA credentials.	<input checked="" type="radio"/>	<input type="radio"/>

NEW QUESTION 9

Which role should you assign to User1?

- A. Global administrator  
B. User administrator  
C. Privileged role administrator  
D. Security administrator

Answer: D

Explanation:

<https://docs.microsoft.com/en-us/azure/active-directory/privileged-identity-management/pim-how-to-give-access-to-pim>

NEW QUESTION 10

HOTSPOT

You are evaluating which devices are compliant in Intune.

For each of the following statements, select Yes if the statement is true. Otherwise, select No. NOTE: Each correct selection is worth one point.

Statements	Yes	No
Device2 is compliant.	<input type="radio"/>	<input type="radio"/>
Device5 is compliant.	<input type="radio"/>	<input type="radio"/>
Device6 is compliant.	<input type="radio"/>	<input type="radio"/>

- A. Mastered
- B. Not Mastered

Answer: A

Explanation:

Statements	Yes	No
Device2 is compliant.	<input checked="" type="radio"/>	<input type="radio"/>
Device5 is compliant.	<input type="radio"/>	<input checked="" type="radio"/>
Device6 is compliant.	<input checked="" type="radio"/>	<input type="radio"/>

NEW QUESTION 10

HOTSPOT

Which policies apply to which devices? To answer, select the appropriate options in the answer area. NOTE: Each correct selection is worth one point.

Answer Area

DevicePolicy1:

None

Device1 only

Device3 only

Device2 and Device3 only

Device1 and Device3 only

Device1, Device2, and Device3

DevicePolicy2:

None

Device4 only

Device2 and Device4 only

Device2, Device3, and Device 4 only

- A. Mastered
- B. Not Mastered

Answer: A

Explanation:

Answer Area

DevicePolicy1:

None

Device1 only

Device3 only

Device2 and Device3 only

Device1 and Device3 only

Device1, Device2, and Device3

DevicePolicy2:

None

Device4 only

Device2 and Device4 only

Device2, Device3, and Device 4 only

NEW QUESTION 15

Note: This question is part of a series of questions that present the same scenario. Each question in the series contains a unique solution that might meet the stated goals. Some question sets might have more than one correct solution, while others might not have a correct solution.

After you answer a question in this section, you will NOT be able to return to it. As a result, these questions will not appear in the review screen.

You have a Microsoft 365 subscription that contains the users shown in the following table.

Name	Role
User1	Compliance Manager Contributor
User2	Compliance Manager Assessor
User3	Compliance Manager Administrator
User4	Portal Admin

You discover that all the users in the subscription can access Compliance Manager reports. The Compliance Manager Reader role is not assigned to any users. You need to recommend a solution to prevent a user named User5 from accessing the Compliance Manager reports.

Solution: You recommend assigning the Compliance Manager Reader role to User1. Does this meet the goal?

- A. Yes
- B. No

Answer: B

## NEW QUESTION 20

### HOTSPOT

You have a Microsoft 365 subscription that uses a default domain name of contoso.com.

The multi-factor authentication (MFA) service settings are configured as shown in the exhibit. (Click the Exhibit tab.)

**multi-factor authentication**  
users    service settings

app passwords [\(earn more\)](#)  
☒ Allow users to create app passwords to sign in to non-browser apps  
☐ Do not allow users to create app passwords to sign in to non-browser apps

trusted ips [\(earn more\)](#)  
☐ Skip multi-factor authentication for requests from federated users on my intranet  
 Skip multi-factor authentication for requests from following range of IP address subnets

verification options [\(earn more\)](#)  
 Methods available to users:  
☐ Call to phone  
☒ Text message to phone  
☒ Notification through mobile app  
☒ Verification code from mobile app or hardware token

remember multi-factor authentication [\(earn more\)](#)  
☐ Allow users to remember multi-factor authentication on devices they trust  
 Days before a device must re-authenticate (1-60)

In contoso.com, you create the users shown in the following table.

Display name	Username	MFA status
User1	User1@contoso.com	Enabled
User2	User2@contoso.com	Enabled
User3	User3@contoso.com	Disabled

What is the effect of the configuration? To answer, select the appropriate options in the answer area. NOTE: Each correct selection is worth one point.

#### User1:

Can sign in to the My Apps portal without using MFA	V
Completed the MFA registration	
Must complete the MFA registration at the next sign-in	

#### User2:

Can sign in to the My Apps portal without using MFA	V
Must use app passwords for legacy apps	
Must use an app password to sign in to the My-Apps portal	

- A. Mastered
- B. Not Mastered

Answer: A

#### Explanation:

##### User1:

Can sign in to the My Apps portal without using MFA	V
Completed the MFA registration	
Must complete the MFA registration at the next sign-in	

##### User2:

Can sign in to the My Apps portal without using MFA	V
Must use app passwords for legacy apps	
Must use an app password to sign in to the My-Apps portal	



### NEW QUESTION 23

You have a Microsoft 365 subscription.

From the Microsoft 365 admin center, you create a new user. You plan to assign the Reports reader role to the user.

You need to see the permissions of the Reports reader role. Which admin center should you use?

- A. Azure Active Directory
- B. Cloud App Security
- C. Security & Compliance
- D. Microsoft 365

**Answer:** A

### NEW QUESTION 25

You configure several Advanced Threat Protection (ATP) policies in a Microsoft 365 subscription. You need to allow a user named User1 to view ATP reports in the Threat management dashboard. Which role provides User1 with the required role permissions?

- A. Security reader
- B. Message center reader
- C. Compliance administrator
- D. Information Protection administrator

**Answer:** A

### Explanation:

Reference:

<https://docs.microsoft.com/en-us/office365/securitycompliance/view-reports-for-atp#what-permissions-areneeded-to-view-the-atp-reports>

### NEW QUESTION 29

You have a Microsoft 365 E5 subscription and a hybrid Microsoft Exchange Server organization.

Each member of a group named Executive has an on-premises mailbox. Only the Executive group members have multi-factor authentication (MFA) enabled. Each member of a group named Research has a mailbox in Exchange Online.

You need to use Microsoft Office 365 Attack simulator to model a spear-phishing attack that targets the Research group members.

The email address that you intend to spoof belongs to the Executive group members. What should you do first?

- A. From Azure ATP admin center, configure the primary workspace settings
- B. From the Microsoft Azure portal, configure the user risk settings in Azure AD Identity Protection
- C. Enable MFA for the Research group members
- D. Migrate the Executive group members to Exchange Online

**Answer:** C

### Explanation:

Reference:

<https://docs.microsoft.com/en-us/office365/securitycompliance/attack-simulator>

### NEW QUESTION 33

#### HOTSPOT

Your network contains an Active Directory domain named contoso.com. The domain contains a VPN server named VPN1 that runs Windows Server 2016 and has the Remote Access server role installed. You have a Microsoft Azure subscription.

You are deploying Azure Advanced Threat Protection (ATP)

You install an Azure ATP standalone sensor on a server named Server1 that runs Windows Server 2016.

You need to integrate the VPN and Azure ATP.

What should you do? To answer, select the appropriate options in the answer area. NOTE: Each correct selection is worth one point.

On VPN1:

Configure an authentication provider.	v
Configure an accounting provider.	
Create a connection request policy.	
Create a RADIUS client.	

On Server1, enable the following inbound port:

443	v
1723	
1813	
8080	
8531	

- A. Mastered
- B. Not Mastered

**Answer:** A

### Explanation:

Reference:

<https://docs.microsoft.com/en-us/azure-advanced-threat-protection/install-atp-step6-vpn>



### NEW QUESTION 36

You have a Microsoft 365 tenant.

You have 500 computers that run Windows 10.

You plan to monitor the computers by using Windows Defender Advanced Threat Protection (Windows Defender ATP) after the computers are enrolled in Microsoft Intune.

You need to ensure that the computers connect to Windows Defender ATP. How should you prepare Intune for Windows Defender ATP?

- A. Configure an enrollment restriction
- B. Create a device configuration profile
- C. Create a conditional access policy
- D. Create a Windows Autopilot deployment profile

**Answer: B**

#### Explanation:

Reference:

<https://docs.microsoft.com/en-us/intune/advanced-threat-protection>

### NEW QUESTION 37

You have a Microsoft 365 subscription.

You create an Advanced Threat Protection (ATP) safe attachments policy to quarantine malware. You need to configure the retention duration for the attachments in quarantine.

Which type of threat management policy should you create from the Security&Compliance admin center?

- A. ATP anti-phishing
- B. DKIM
- C. Anti-spam
- D. Anti-malware

**Answer: D**

### NEW QUESTION 42

#### HOTSPOT

Your network contains an on-premises Active Directory domain named contoso.com. The domain contains the groups shown in the following table.

Name	Type	Email address
Group1	Security Group – Domain Local	<a href="mailto:Group1@contoso.com">Group1@contoso.com</a>
Group2	Security Group – Universal	None
Group3	Distribution Group – Global	None
Group4	Distribution Group – Universal	<a href="mailto:Group4@contoso.com">Group4@contoso.com</a>

The domain is synced to a Microsoft Azure Active Directory (Azure AD) tenant that contains the groups shown in the following table.

Name	Type	Membership type
Group11	Security group	Assigned
Group12	Security group	Dynamic
Group13	Office	Assigned
Group14	Mail-enabled security group	Assigned

You create an Azure Information Protection policy named Policy1. You need to apply Policy1.

To which groups can you apply Policy1? To answer, select the appropriate options in the answer area. NOTE: Each correct selection is worth one point.

**On-premises Active Directory groups:**

Group4 only	V
Group1 and Group4 only	
Group3 and Group4 only	
Group1, Group3, and Group4 only	
Group1, Group2, Group3, and Group4	

**Azure AD groups:**

Group13 only	V
Group13 and Group14 only	
Group11 and Group12 only	
Group11, Group13, and Group14 only	
Group11, Group12, Group13, and Group14 only	

- A. Mastered
- B. Not Mastered

**Answer: A**

#### Explanation:

Reference:

<https://docs.microsoft.com/en-us/azure/information-protection/prepare>

### NEW QUESTION 43

#### HOTSPOT

You have the Microsoft conditions shown in the following table.

Name	Pattern	Case sensitivity
Condition1	Product1	Off
Condition2	Product2	On

You have the Azure Information Protection labels shown in the following table.

Name	Use condition	Label is applied
Label1	Condition1	Automatically
Label2	Condition2	Automatically

You have the Azure Information Protection policies shown in the following table.

Name	Applies to	Use label	Set the default label
Global	<i>Not applicable</i>	<i>None</i>	None
Policy1	User1	Label1	None
Policy2	User2	Label2	None

For each of the following statements, select Yes if the statement is true. Otherwise, select No.

Statements	Yes	No
If a user types "Product1 and Product2" in a document and saves the document in Microsoft Word, the document will be assigned Label1 sensitivity automatically.	<input type="radio"/>	<input type="radio"/>
If a user types "Product2 and Product1" in a document and saves the document in Microsoft Word, the document will be assigned Label2 sensitivity automatically.	<input type="radio"/>	<input type="radio"/>
If a user types "product2" in a document and save the document in Microsoft Word, the document will be assigned Label2 sensitivity automatically.	<input type="radio"/>	<input type="radio"/>

- A. Mastered  
B. Not Mastered

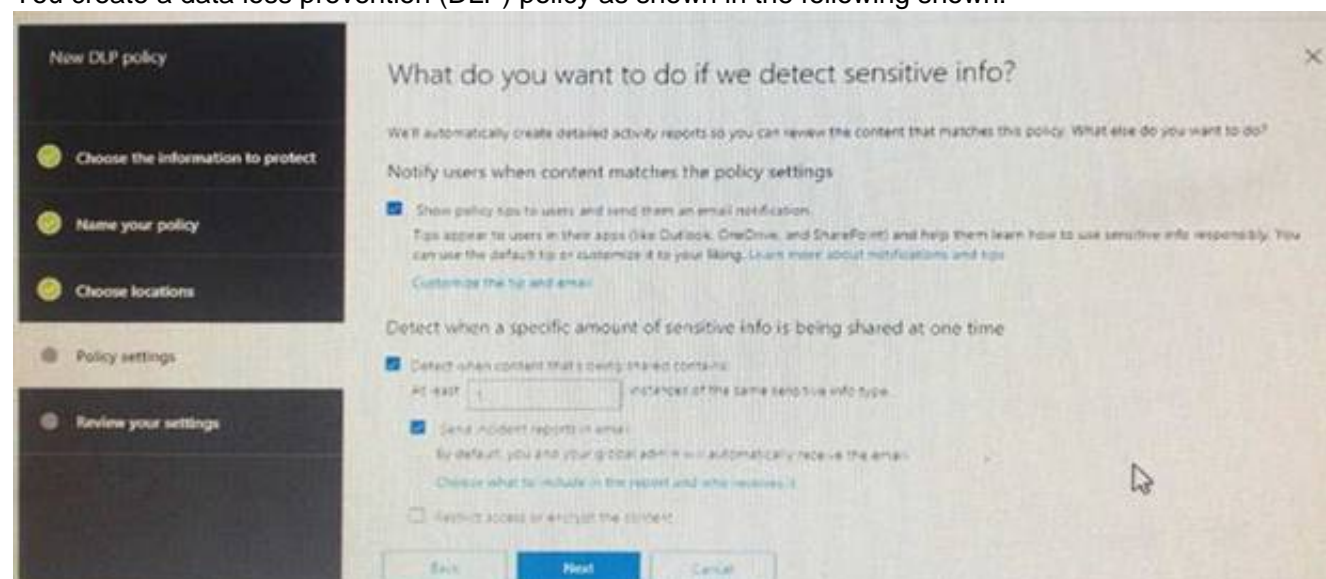
Answer: A

Explanation:

Statements	Yes	No
If a user types "Product1 and Product2" in a document and saves the document in Microsoft Word, the document will be assigned Label1 sensitivity automatically.	<input type="radio"/>	<input checked="" type="radio"/>
If a user types "Product2 and Product1" in a document and saves the document in Microsoft Word, the document will be assigned Label2 sensitivity automatically.	<input checked="" type="radio"/>	<input type="radio"/>
If a user types "product2" in a document and save the document in Microsoft Word, the document will be assigned Label2 sensitivity automatically.	<input type="radio"/>	<input checked="" type="radio"/>

### NEW QUESTION 46

You create a data loss prevention (DLP) policy as shown in the following shown:



What is the effect of the policy when a user attempts to send an email messages that contains sensitive information?

- A. The user receives a notification and can send the email message
- B. The user receives a notification and cannot send the email message
- C. The email message is sent without a notification
- D. The email message is blocked silently

**Answer:** A

**Explanation:**

<https://docs.microsoft.com/en-us/office365/securitycompliance/data-loss-prevention-policies>

#### NEW QUESTION 47

HOTSPOT

You have a Microsoft 365 E5 subscription.

From Microsoft Azure Active Directory (Azure AD), you create a security group named Group1. You add 10 users to Group1.

You need to apply app enforced restrictions to the members of Group1 when they connect to Microsoft Exchange Online from non-compliant devices, regardless of their location.

What should you do? To answer, select the appropriate options in the answer area. NOTE: Each correct selection is worth one point.

From the Azure portal, create a conditional access policy and configure:

Users and groups, Cloud apps, and Session settings	V
Users and groups, Cloud apps, and Conditions settings	
Users and groups, Conditions, and Session settings	

From an Exchange Online Remote PowerShell session, run:

New-OwaMailbox Policy and Set-OwaMailboxPolicy	V
New-ClientAccessRule and Test-ClientAccessRule	
Get-CASMailbox and Set-CASMailbox	

- A. Mastered
- B. Not Mastered

**Answer:** A

**Explanation:**

From the Azure portal, create a conditional access policy and configure:

Users and groups, Cloud apps, and Session settings	V
Users and groups, Cloud apps, and Conditions settings	
Users and groups, Conditions, and Session settings	

From an Exchange Online Remote PowerShell session, run:

New-OwaMailbox Policy and Set-OwaMailboxPolicy	V
New-ClientAccessRule and Test-ClientAccessRule	
Get-CASMailbox and Set-CASMailbox	

#### NEW QUESTION 50

DRAG DROP

You have a Microsoft 365 subscription.

A customer requests that you provide her with all documents that reference her by name. You need to provide the customer with a copy of the content.

Which four actions should you perform in sequence? To answer, move the appropriate actions from the list of actions to the answer area and arrange them in the correct order.



Actions	Answer Area
Close the case.	
Regenerate a report.	
View the results.	
Export the results.	
Create a Data Subject Request (DSR) case.	
Save the search.	
Download the results.	

- A. Mastered  
 B. Not Mastered

**Answer:** A

**Explanation:**

Reference:  
<https://docs.microsoft.com/en-us/microsoft-365/compliance/gdpr-dsr-office365>

**NEW QUESTION 54**

You recently created and published several labels policies in a Microsoft 365 subscription. You need to view which labels were applied by users manually and which labels were applied automatically. What should you do from the Security & Compliance admin center?

- A. From Search & investigation, select Content search  
 B. From Data governance, select Events  
 C. From Search & investigation, select eDiscovery  
 D. From Reports, select Dashboard

**Answer:** B

**NEW QUESTION 58**

You have a Microsoft 365 subscription. The Global administrator role is assigned to your user account. You have a user named Admin1. You create an eDiscovery case named Case1. You need to ensure that Admin1 can view the results of Case1. What should you do first?

- A. From the Azure Active Directory admin center, assign a role group to Admin1.  
 B. From the Microsoft 365 admin center, assign a role to Admin1.  
 C. From Security & Compliance admin center, assign a role group to Admin1.

**Answer:** C

**Explanation:**

Reference:  
<https://docs.microsoft.com/en-us/office365/securitycompliance/assign-ediscovery-permissions>

**NEW QUESTION 60**

**HOTSPOT**

You have a Microsoft 365 subscription. From the Security & Compliance admin center, you create the retention policies shown in the following table.

Name	Location
Policy1	OneDrive accounts
Polciy2	Exchange email, SharePoint sites, OneDrive accounts, Office 365 groups

Policy1 if configured as showing in the following exhibit.



Decide if you want to retain content, delete it, or both

**Do you want to retain content?** ⓘ

☒ Yes, I want to retain it ⓘ

For this long... ▾ 1 years ▾

☐ No, just delete content that's older than ⓘ

1 years ▾

Delete the content based on when it was created ▾ ⓘ

**Need more options?**

☐ Use advanced retention settings ⓘ

Back Next Cancel

Policy2 is configured as shown in the following exhibit.

Decide if you want to retain content, delete it, or both

**Do you want to retain content?** ⓘ

☒ Yes, I want to retain it ⓘ

For this long... ▾ 3 years ▾

Retain the content based on when it was created ▾ ⓘ

Do you want us to delete it after this time?

☐ Yes ☒ No

☐ No, just delete content that's older than ⓘ

1 years ▾

**Need more options?**

☐ Use advanced retention settings ⓘ

Back Next Cancel

For each of the following statements, select Yes if the statement is true. Otherwise, select No.

Answer Area	Yes	No
If a user creates a file in Microsoft OneDrive on January 1, 2018, users can access the file on January 15, 2019	<input type="radio"/>	<input type="radio"/>
If a user deletes a Microsoft OneDrive file created on January 1, 2018, an administrator can recover the file on April 15, 2019	<input type="radio"/>	<input type="radio"/>
If a user deletes a Microsoft OneDrive file created on January 1, 2018, an administrator can recover the file on April 15, 2022	<input type="radio"/>	<input type="radio"/>

- A. Mastered  
 B. Not Mastered

**Answer:** A

**Explanation:**

Reference:

<https://docs.microsoft.com/en-us/office365/securitycompliance/retention-policies?redirectSourcePath=%252fen-us%252farticle%252fOverview-of-retention-policies-5e377752-700d-4870-9b6d-12bfc12d2423#the-principles-of-retention-or-what-takes-precedence>

**NEW QUESTION 61**

You have a Microsoft 365 subscription.

All computers run Windows 10 Enterprise and are managed by using Microsoft Intune. You plan to view only security-related Windows telemetry data.

You need to ensure that only Windows security data is sent to Microsoft. What should you create from the Intune admin center?

- A. a device configuration profile that has device restrictions configured
- B. a device configuration profile that has the Endpoint Protection settings configured
- C. a device configuration policy that has the System Security settings configured
- D. a device compliance policy that has the Device Health settings configured

**Answer:** A

**Explanation:**

Reference:

<https://docs.microsoft.com/en-us/intune/device-restrictions-windows-10#reporting-and-telemetry>

**NEW QUESTION 62**

You create a label that encrypts email data. Users report that they cannot use the label in Outlook on the web to protect the email messages they send. You need to ensure that the users can use the new label to protect their email. What should you do?

- A. Modify the priority order of label policies
- B. Wait six hours and ask the users to try again
- C. Create a label policy
- D. Create a new sensitive information type

**Answer:** B

**NEW QUESTION 66**

Your company has a Microsoft 365 subscription that includes a user named User1.

You suspect that User1 sent email messages to a competitor detailing company secrets.

You need to recommend a solution to ensure that you can review any email messages sent by User1 to the competitor, including sent items that were deleted. What should you include in the recommendation?

- A. Enable In-Place Archiving for the mailbox of User1
- B. From the Security & Compliance, perform a content search of the mailbox of User1
- C. Place a Litigation Hold on the mailbox of User1
- D. Configure message delivery restrictions for the mailbox of User1

**Answer:** C

**NEW QUESTION 67**

HOTSPOT

You have a Microsoft 365 E5 subscription.

Users and device objects are added and removed daily. Users in the sales department frequently change their device.

You need to create three following groups:

Group	Requirement
1	All the devices of users where the Department attributes is set to Sales
2	All the devices where the Department attribute is set to Sales
3	All the devices where the deviceOwnership attribute is set to Company

The solution must minimize administrative effort.

What is the minimum number of groups you should create for each type of membership? To answer, select the appropriate options in the answer area.

NOTE: Each correct selection is worth one point.

Groups that have assigned membership:

	▼
0	
1	
2	
3	

Groups that have dynamic membership:

	▼
0	
1	
2	
3	

- A. Mastered
- B. Not Mastered

**Answer:** A

**Explanation:**

References:

<https://github.com/MicrosoftDocs/azure-docs/blob/master/articles/active-directory/users-groups-roles/groups-dynamic-membership.md>

**NEW QUESTION 69**

Your company has a main office and a Microsoft 365 subscription.

You need to enforce Microsoft Azure Multi-Factor Authentication (MFA) by using conditional access for all users who are NOT physically present in the office.

What should you include in the configuration?

- A. a user risk policy
- B. a sign-in risk policy
- C. a named location in Azure Active Directory (Azure AD)
- D. an Azure MFA Server

**Answer: C**

**Explanation:**

References:

<https://docs.microsoft.com/en-us/azure/active-directory/conditional-access/location-condition>

**NEW QUESTION 74**

You have a Microsoft 365 Enterprise E5 subscription.

You use Windows Defender Advanced Threat Protection (Windows Defender ATP).

You need to integrate Microsoft Office 365 Threat Intelligence and Windows Defender ATP. Where should you configure the integration?

- A. From the Microsoft 365 admin center, select Settings, and then select Services & add-ins.
- B. From the Security & Compliance admin center, select Threat management, and then select Explorer.
- C. From the Microsoft 365 admin center, select Reports, and then select Security & Compliance.
- D. From the Security & Compliance admin center, select Threat management and then select Threat tracker.

**Answer: B**

**Explanation:**

References:

<https://docs.microsoft.com/en-us/office365/securitycompliance/integrate-office-365-ti-with-wdatp>

**NEW QUESTION 75**

**HOTSPOT**

You have a Microsoft 365 subscription that uses a default name of litwareinc.com.

You configure the Sharing settings in Microsoft OneDrive as shown in the following exhibit.

**Links**

Choose the kind of link that's selected by default when users share items.

**Default link type**

☒ Shareable: Anyone with the link

☐ Internal: Only people in your organization

☐ Direct: Specific people

**External sharing**

Users can share with:

SharePoint	OneDrive	Permissions
Most permissive	Anyone	Users can create shareable links that don't require sign-in
	New and existing external users	External users must sign-in
	Existing external users	Only users already in your organization's directory
Least permissive	Only people in your organization	No external sharing allowed

Your sharing setting for OneDrive can't be more permissive than your setting for SharePoint.

**Advanced settings for external sharing**

☒ Allow or block sharing with people on specific domains

Allow only these domains: Contoso.com, Adatum.com Add domains

Use the drop-down menus to select the answer choice that completes each statement based on the information presented in the graphic.

NOTE: Each correct selection is worth one point.

A user who has an email address of user1@fabrikam.com [answer choice]

	▼
cannot access OneDrive content	
can access OneDrive content after a link is created	
must be added to be a group before the user can access shared files	

If a new guest user is created for user2@contoso.com [answer choice]

	▼
the user cannot access OneDrive content	
the user can access OneDrive content after a link is created	
must be added to a group before the user can access shared files	

- A. Mastered
- B. Not Mastered

**Answer:** A

**Explanation:**

References:

<https://docs.microsoft.com/en-us/onedrive/manage-sharing>

**NEW QUESTION 80**

You have a Microsoft 365 subscription that includes a user named User1.

You have a conditional access policy that applies to Microsoft Exchange Online. The conditional access policy is configured to use Conditional Access App Control.

You need to create a Microsoft Cloud App Security policy that blocks User1 from printing from Exchange Online.

Which type of Cloud App Security policy should you create?

- A. an app permission policy
- B. an activity policy
- C. a Cloud Discovery anomaly detection policy
- D. a session policy

**Answer:** D

**NEW QUESTION 85**

Note: This question is part of a series of questions that present the same scenario. Each question in the series contains a unique solution that might meet the stated goals. Some questions sets might have more than one correct solution, while others might not have a correct solution.

After you answer a question in this section, you will NOT be able to return to it. As a result, these questions will not appear in the review screen.

You have a Microsoft 365 subscription.

You have a user named User1. Several users have full access to the mailbox of User1.

Some email messages sent to User1 appear to have been read and deleted before the user viewed them.

When you search the audit log in Security & Compliance to identify who signed in to the mailbox of User1, the results are blank.

You need to ensure that you can view future sign-ins to the mailbox of User1. You run the Set-Mailbox -Identity "User1" -AuditEnabled \$true command. Does that meet the goal?

- A. Yes
- B. No

**Answer:** A

**Explanation:**

References:

<https://docs.microsoft.com/en-us/powershell/module/exchange/mailboxes/set-mailbox?view=exchange-ps>

**NEW QUESTION 88**

Note: This question is part of a series of questions that present the same scenario. Each question in the series contains a unique solution that might meet the stated goals. Some questions sets might have more than one correct solution, while others might not have a correct solution.

After you answer a question in this section, you will NOT be able to return to it. As a result, these questions will not appear in the review screen.

You have a Microsoft 365 subscription.

You have a user named User1. Several users have full access to the mailbox of User1.

Some email messages sent to User1 appear to have been read and deleted before the user viewed them.

When you search the audit log in Security & Compliance to identify who signed in to the mailbox of User1, the results are blank.

You need to ensure that you can view future sign-ins to the mailbox of User1.

You run the Set-AdminAuditLogConfig -AdminAuditLogEnabled \$true-AdminAuditLogCmdlets \*Mailbox\* command. Does that meet the goal?

- A. Yes
- B. No

**Answer:** B

**Explanation:**



References:

<https://docs.microsoft.com/en-us/powershell/module/exchange/policy-and-compliance-audit/setadminauditlogconfig?view=exchange-ps>

#### NEW QUESTION 91

You have a Microsoft 365 subscription.

You have a Microsoft SharePoint Online site named Site1. The files in Site1 are protected by using Microsoft Azure Information Protection.

From the Security & Compliance admin center, you create a label that designates personal data. You need to auto-apply the new label to all the content in Site1.

What should you do first?

- A. From PowerShell, run Set-ManagedContentSettings.
- B. From PowerShell, run Set-ComplianceTag.
- C. From the Security & Compliance admin center, create a Data Subject Request (DSR).
- D. Remove Azure Information Protection from the Site1 files.

**Answer:** D

#### Explanation:

References:

<https://docs.microsoft.com/en-us/office365/securitycompliance/apply-labels-to-personal-data-in-office-365>

#### NEW QUESTION 94

You have a Microsoft 365 subscription.

A security manager receives an email message every time a data loss prevention (DLP) policy match occurs.

You need to limit alert notifications to actionable DLP events.

What should you do?

- A. From the Security & Compliance admin center, modify the Policy Tips of a DLP policy.
- B. From the Cloud App Security admin center, apply a filter to the alerts.
- C. From the Security & Compliance admin center, modify the User overrides settings of a DLP policy.
- D. From the Security & Compliance admin center, modify the matched activities threshold of an alert policy.

**Answer:** D

#### Explanation:

References:

<https://docs.microsoft.com/en-us/office365/securitycompliance/alert-policies>

#### NEW QUESTION 99

You have a Microsoft 365 subscription.

You create and run a content search from the Security & Compliance admin center. You need to download the results of the content search.

What should you obtain first?

- A. an export key
- B. a password
- C. a certificate
- D. a pin

**Answer:** A

#### Explanation:

References:

<https://docs.microsoft.com/en-us/office365/securitycompliance/export-search-results>

#### NEW QUESTION 103

HOTSPOT

You have a Microsoft 365 subscription that include three users named User1, User2, and User3.

A file named File1.docx is stored in Microsoft OneDrive. An automated process updates File1.docx every minute.

You create an alert policy named Policy1 as shown in the following exhibit.

Policy1

Edit policy

Delete policy

Status	<input checked="" type="checkbox"/> On	
Description	Policy1 description	
Severity	<input checked="" type="radio"/> Low	Edit
Category	Threat management	

Conditions	Activity is Copied file and File name is Like any of File1.docx	
Aggregation	Aggregated	
Threshold	10 activities	Edit
Window	60 minutes	
Scope	All users	

Email recipients	prvi@sk180920.onmicrosoft.com	
Daily notifications limit	Do not send email notifications	Edit

Use the drop-down menus to select the answer choice that completes each statement based on the information presented in the graphic.  
 NOTE: Each correct selection is worth one point.

If User1 runs a scheduled task that copies File1.docx to a local folder every five minutes. [answer choice].

▼

Policy1 will not be triggered

Policy1 will be triggered after 45 minutes

Policy1 will be triggered after 60 minutes

If User1, User2, and User3 each run a scheduled task that copies File1.docx to a local folder every 10 minutes. [answer choice].

▼

Policy1 will not be triggered

Policy1 will be triggered within 20 minutes

Policy1 will be triggered within 45 minutes

Policy1 will be triggered after 60 minutes

- A. Mastered
- B. Not Mastered

Answer: A

#### Explanation:

References:

<https://docs.microsoft.com/en-us/office365/securitycompliance/alert-policies>

#### NEW QUESTION 107

You have a Microsoft 365 subscription.

You create a retention policy and apply the policy to Exchange Online mailboxes.

You need to ensure that the retention policy tags can be assigned to mailbox items as soon as possible.

What should you do?

- A. From Exchange Online PowerShell, run Start-RetentionAutoTagLearning
- B. From Exchange Online PowerShell, run Start-ManagedFolderAssistant
- C. From the Security & Compliance admin center, create a data loss prevention (DLP) policy
- D. From the Security & Compliance admin center, create a label policy

Answer: D

#### Explanation:

References:

<https://docs.microsoft.com/en-us/office365/securitycompliance/labels>

#### NEW QUESTION 111

You have a Microsoft 365 subscription.

You have a team named Team1 in Microsoft Teams. You plan to place all the content in Team1 on hold.

You need to identify which mailbox and which Microsoft SharePoint site collection are associated to Team1.

Which cmdlet should you use?

- A. Get-UnifiedGroup
- B. Get-MailUser

- C. Get-TeanMessagingSettings
- D. Get-TeamChannel

Answer: A

NEW QUESTION 112

HOTSPOT

You have a Microsoft 365 subscription that uses an Azure Active Directory (Azure AD) tenant named contoso.com. OneDrive stores files that are shared with external users. The files are configured as shown in the following table.

Name	Applied label
File1	Label1
File2	Label1, Label2
File3	Label2

You create a data loss prevention (DLP) policy that applies to the content stored in OneDrive accounts. The policy contains the following three rules:

- Rule1:
- Conditions: Label 1, Detect content that's shared with people outside my organization
- Actions: Restrict access to the content for external users
- User notifications: Notify the user who last modified the content
- User overrides: On
- Priority: 0
- Rule2:
- Conditions: Label 1 or Label2
- Actions: Restrict access to the content
- Priority: 1
- Rule3:
- Conditions: Label2, Detect content that's shared with people outside my organization
- Actions: Restrict access to the content for external users
- User notifications: Notify the user who last modified the content
- User overrides: On
- Priority: 2

For each of the following statements, select Yes if the statement is true. Otherwise, select No. NOTE: Each correct selection is worth one point.  
For each of the following statements, select Yes if the statement is true. Otherwise, select No. NOTE: Each correct selection is worth one point.

Answer Area

Statements	Yes	No
External users can access File1.	<input type="radio"/>	<input type="radio"/>
The users in contoso.com can access File2.	<input type="radio"/>	<input type="radio"/>
External users can access File3.	<input type="radio"/>	<input type="radio"/>

- A. Mastered
- B. Not Mastered

Answer: A

Explanation:

Answer Area

Statements	Yes	No
External users can access File1.	<input checked="" type="radio"/>	<input type="radio"/>
The users in contoso.com can access File2.	<input checked="" type="radio"/>	<input type="radio"/>
External users can access File3.	<input checked="" type="radio"/>	<input type="radio"/>

NEW QUESTION 113

Several users in your Microsoft 365 subscription report that they received an email message without the attachment. You need to review the attachments that were removed from the messages. Which two tools can you use? Each correct answer presents a complete solution. NOTE: Each correct selection is worth one point.

- A. the Exchange admin center
- B. the Azure ATP admin center
- C. Microsoft Azure Security Center
- D. the Security & Compliance admin center
- E. Outlook on the web

Answer: AD

**Explanation:**

References:

<https://docs.microsoft.com/en-us/office365/securitycompliance/manage-quarantined-messages-and-files>

**NEW QUESTION 118**

DRAG DROP

You have a Microsoft 365 E5 subscription.

All computers run Windows 10 and are onboarded to Windows Defender Advanced Threat Protection (Windows Defender ATP).

You create a Windows Defender machine group named MachineGroup1.

You need to enable delegation for the security settings of the computers in MachineGroup1.

Which three actions should you perform in sequence? To answer, move the appropriate actions from the list of actions to the answer area and arrange them in the correct order.

Actions	Answer Area
From Windows Defender Security Center, create a role.	
From Windows Defender Security Center, configure the permissions for MachineGroup1.	
From the Azure portal, create an RBAC role.	
From the Microsoft Azure portal, create an Azure Active Directory (Azure AD) group.	
From Azure Cloud Shell, run the Add-HsolRoleMember cmdlet.	

➤  
➡

⬆  
⬇

- A. Mastered
- B. Not Mastered

**Answer: A**

**Explanation:**

Actions	Answer Area
From Windows Defender Security Center, create a role.	From Windows Defender Security Center, configure the permissions for MachineGroup1.
From Windows Defender Security Center, configure the permissions for MachineGroup1.	From the Microsoft Azure portal, create an Azure Active Directory (Azure AD) group.
From the Azure portal, create an RBAC role.	From the Azure portal, create an RBAC role.
From the Microsoft Azure portal, create an Azure Active Directory (Azure AD) group.	
From Azure Cloud Shell, run the Add-HsolRoleMember cmdlet.	

➤  
➡

⬆  
⬇

**NEW QUESTION 120**

You have a Microsoft 365 subscription.

You create an Advanced Threat Protection (ATP) safe attachments policy.

You need to configure the retention duration for the attachments in quarantine. Which type of threat management policy should you create?

- A. Anti-malware
- B. DKIM
- C. Anti-spam
- D. ATP anti-phishing

**Answer: A**

**NEW QUESTION 123**

Note: This question is part of a series of questions that present the same scenario. Each question in the series contains a unique solution that might meet the stated goals. Some questions sets might have more than one correct solution, while others might not have a correct solution.

After you answer a question in this section, you will NOT be able to return to it. As a result, these questions will not appear in the review screen.

You have an on-premises Active Directory domain named contoso.com.

You install and run Azure AD Connect on a server named Server1 that runs Windows Server. You need to view Azure AD Connect events.

You use the Security event log on Server1. Does that meet the goal?

- A. Yes
- B. No

**Answer: B**

**Explanation:**

References:

<https://support.pingidentity.com/s/article/PingOne-How-to-troubleshoot-an-AD-Connect-Instance>

**NEW QUESTION 124**



Your network contains an on-premises Active Directory domain. The domain contains servers that run Windows Server and have advanced auditing enabled.

The security logs of the servers are collected by using a third-party SIEM solution.

You purchase a Microsoft 365 subscription and plan to deploy Azure Advanced Threat Protection (ATP) by using standalone sensors.

You need to ensure that you can detect when sensitive groups are modified and when malicious services are created.

What should you do?

- A. Configure Event Forwarding on the domain controllers
- B. Configure auditing in the Office 365 Security & Compliance center.
- C. Turn on Delayed updates for the Azure ATP sensors.
- D. Enable the Audit account management Group Policy setting for the servers.

**Answer:** A

**Explanation:**

Reference:

<https://docs.microsoft.com/en-us/azure-advanced-threat-protection/configure-event-forwarding>

#### NEW QUESTION 127

.....

## THANKS FOR TRYING THE DEMO OF OUR PRODUCT

Visit Our Site to Purchase the Full Set of Actual MS-500 Exam Questions With Answers.

We Also Provide Practice Exam Software That Simulates Real Exam Environment And Has Many Self-Assessment Features. Order the MS-500 Product From:

<https://www.2passeasy.com/dumps/MS-500/>

## Money Back Guarantee

### MS-500 Practice Exam Features:

- \* MS-500 Questions and Answers Updated Frequently
- \* MS-500 Practice Questions Verified by Expert Senior Certified Staff
- \* MS-500 Most Realistic Questions that Guarantee you a Pass on Your FirstTry
- \* MS-500 Practice Test Questions in Multiple Choice Formats and Updatesfor 1 Year