



# Cisco

## Exam Questions 500-220

Engineering Cisco Meraki Solutions

## About ExamBible

*[Your Partner of IT Exam](#)*

## Found in 1998

ExamBible is a company specialized on providing high quality IT exam practice study materials, especially Cisco CCNA, CCDA, CCNP, CCIE, Checkpoint CCSE, CompTIA A+, Network+ certification practice exams and so on. We guarantee that the candidates will not only pass any IT exam at the first attempt but also get profound understanding about the certificates they have got. There are so many alike companies in this industry, however, ExamBible has its unique advantages that other companies could not achieve.

## Our Advances

### \* 99.9% Uptime

All examinations will be up to date.

### \* 24/7 Quality Support

We will provide service round the clock.

### \* 100% Pass Rate

Our guarantee that you will pass the exam.

### \* Unique Gurantee

If you do not pass the exam at the first time, we will not only arrange FULL REFUND for you, but also provide you another exam of your claim, ABSOLUTELY FREE!

#### NEW QUESTION 1

What are two roles of the network and device tags in a Dashboard? (Choose two.)

- A. Tags enable administrators to configure a combination of network and device specific tags to create summary reports filtered for specific devices across multiple networks.
- B. Network tags can be used to assign networks to separate Auto VPN domains in an Organization with many networks.
- C. Network tags can be used to simplify the assignment of network-level permissions in an Organization with many networks.
- D. Device tags can be used to simplify the assignment of device-level permissions in an Organization with many administrators.
- E. Device tags can be assigned to MR APs to influence the gateway selection for repeaters in a mesh wireless network.

**Answer:** AE

#### NEW QUESTION 2

Which configuration step is necessary when automatic updating is required of iOS apps provisioned through Systems Manager that are found in the App Store?

- A. No configuration step is necessary; automatic updating is the default behavior.
- B. Configure automatic updating of iOS devices in the Meraki installed profile.
- C. Create a security policy that enables automatic updates.
- D. Create a profile with automatic update enabled and apply it to iOS devices.

**Answer:** C

#### NEW QUESTION 3

Refer to the exhibit.



For an AP that displays this alert, which network access control method must be in use?

- A. preshared key
- B. WPA2-enterprise with my RADIUS server
- C. splash page with my RADIUS server
- D. MAC-based access control with RADIUS server

**Answer:** A

#### NEW QUESTION 4

What is the best practice Systems Manager enrollment method when deploying corporate-owned iOS devices?

- A. manual
- B. Apple Configurator
- C. Sentry enrollment
- D. DEP

**Answer:** B

#### NEW QUESTION 5

How does a Meraki device behave if cloud connectivity is temporarily lost?

- A. The offline device continues to run with its last known configuration until cloud connectivity is restored.
- B. The offline device reboots every 5 minutes until connection is restored.
- C. The offline device stops passing traffic.
- D. The offline device tries to form a connection with a local backup sever.

**Answer:** D

#### NEW QUESTION 6

A customer wants to use Microsoft Azure to host corporate application servers.

Which feature does the customer get by using a vMX appliance rather than connecting directly to Azure by VPN?

- A. malware protection
- B. SD-WAN
- C. next-generation firewall
- D. intrusion prevention

**Answer:** C

#### NEW QUESTION 7

Refer to the exhibit.

## License information for Home

License status	<b>OK</b>	
License expiration ⓘ	May 20, 2029 (3593 days from now)	
MX advanced Security	Enabled	
System Manager	Enabled (paid)	
	License limit	Current device count
MS220-8P	1	1
MV	2	0
MX64	1	1
Systems Manager Agent	100	0
Wireless AP	7	1
MV-SEN	10 free	0

### [Add another license](#)

This Dashboard organization uses Co-Termination licensing model.

What happens when an additional seven APs are claimed on this network without adding licenses?

- A. All APs immediately stop functioning.
- B. All network devices stop functioning in 30 days.
- C. One AP Immediately stops functioning.
- D. All APs stop functioning in 30 days.

**Answer: B**

### NEW QUESTION 8

What is the role of the Meraki Dashboard as the service provider when using SAML for single sign-on to the Dashboard?

- A. The Dashboard generates the SAML request.
- B. The Dashboard provides user access credentials.
- C. The Dashboard parses the SAML request and authenticates users.
- D. The Dashboard generates the SAML response.

**Answer: A**

### NEW QUESTION 9

Refer to the exhibit.

#### Route table

SUBNET	NAME	TYPE	SORT BY ⌵
<input type="text" value="Search by subnet"/>	<input type="text" value="Search by name"/>	<input type="text" value="All"/>	<input type="text" value="Priority"/>
Subnet	Name	Type	Next hop
10.115.32.0/28	Store 1532 – appliance: MGMT	Meraki VPN: VLAN	Peer: Store 1532 – appliance
10.116.32.0/28	Store 1532 – appliance: DATA	Meraki VPN: VLAN	Peer: Store 1532 – appliance
192.39.2.28/32	External	BGP	10.128.124.62
192.168.70.8/29	MSP NOC	IPSec Peer	4.99.111.99
192.168.70.0/29	MSP NOC	IPSec Peer	4.100.99.100
192.39.228.0/24	External	BGP	10.128.124.62
192.168.0.0/16	External	BGP	10.128.124.62

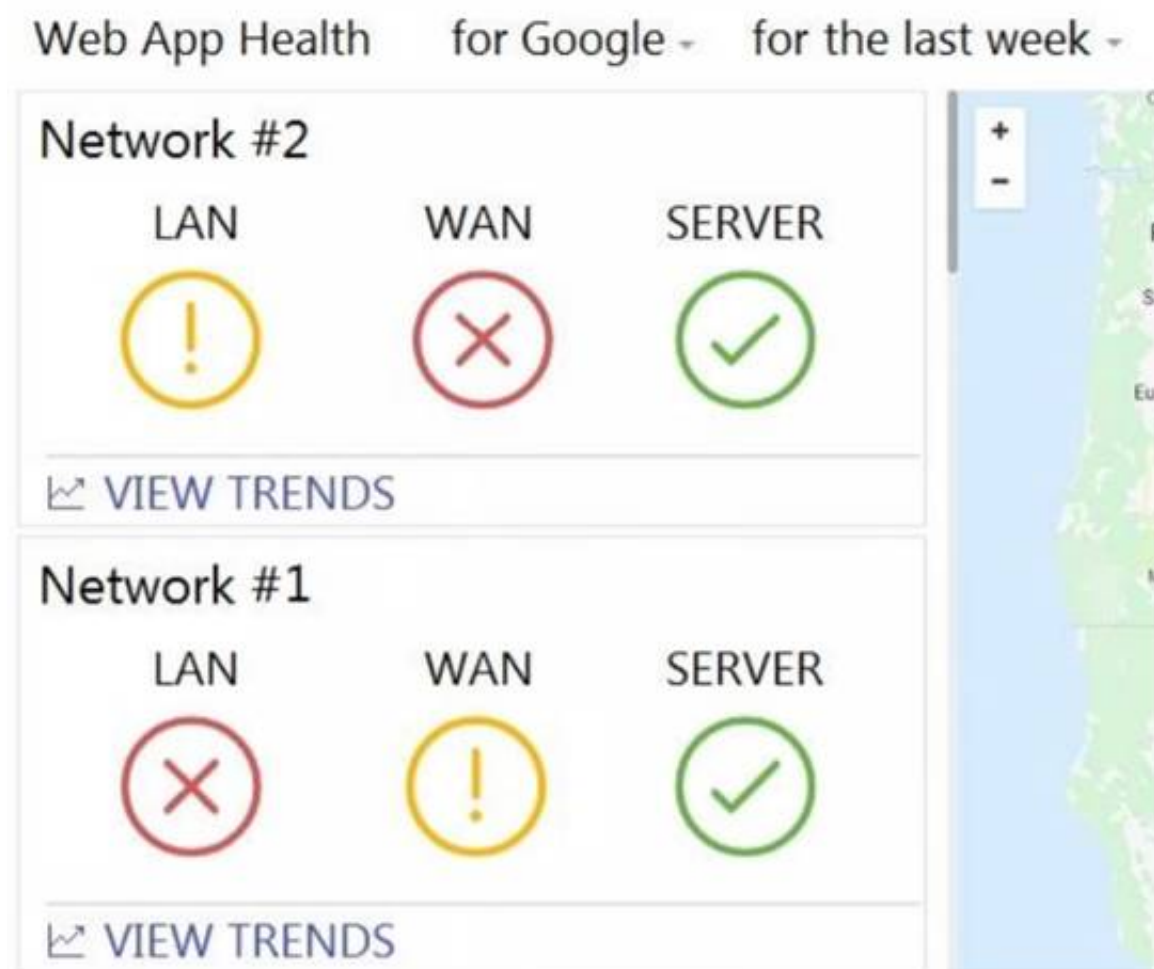
A packet arrives on the VPN concentrator with source IP 10.168.70.3 and destined for IP 10.116.32.4. What is the next hop for the packet, based on this concentrator routing table?

- A. The concentrator gateway (10.128.124.62) is the next hop.
- B. Not enough detail is available to determine the next hop.
- C. The packet is stopped.
- D. The Auto VPN peer “Store 1532 – appliance” is the next hop.

**Answer: B**

### NEW QUESTION 10

Refer to the exhibit.



What are two outcomes reflected in the Web App Health application? (Choose two.)

- A. Users on both networks may be experiencing issues when attempting to reach Google.
- B. Network #1 could not load Google because of a remote server issue.
- C. Network #2 had better application performance than Network #1.
- D. Network #2 could not load Google because of a local client misconfiguration.
- E. Neither network recorded any server-side performance issues.

**Answer:** BE

#### NEW QUESTION 10

Which two features and functions are supported when using an MX appliance in Passthrough mode? (Choose two.)

- A. intrusion prevention
- B. site-to-site VPN
- C. secondary uplinks
- D. DHCP
- E. high availability

**Answer:** AB

#### NEW QUESTION 15

Which order is accurate for a firmware upgrade on MX appliances in a high-availability configuration?

- A. starts on the secondary MX appliance and then occurs on the primary MX appliance
- B. starts on both MX appliances at the same time and then reboots both appliances after traffic on the primary MX appliance ceases
- C. starts on both MX appliances at the same time and then immediately reboots both appliances
- D. starts on the primary MX appliance and then occurs on the secondary MX appliance

**Answer:** D

#### NEW QUESTION 19

For which two reasons can an organization become "Out of License"? (Choose two.)

- A. licenses that are in the wrong network
- B. more hardware devices than device licenses
- C. expired device license
- D. licenses that do not match the serial numbers in the organization
- E. MR licenses that do not match the MR models in the organization

**Answer:** BC

#### NEW QUESTION 22

Refer to the exhibit.



WAN Health 

For the last 2 hours

Uplink Status	Network Name ▲	Uplink Type	ISP	Availability	Total Usage	Average Throughput	Loss	Average Latency	Jitter
Ready	Meraki Sydney – appliance	WAN 1	unknown	<div></div>	↓ 4.03 GB, ↑ 1.39 GB	↓ 4.44 Mb/s, ↑ 1.55 Mb/s	0.00%	4.33 ms	0.05 ms
Active	Meraki Sydney – appliance	WAN 2	anticklockwise.net.au	<div></div>	↓ 23.18 GB, ↑ 14.85 GB	↓ 25.00 Mb/s, ↑ 15.39 Mb/s	0.00%	0.79 ms	0.06 ms

What are the Loss and Average Latency statistics based on?

- A. responses that the MX appliance receives on the connectivity-testing hostnames on the Insight > Web App Health page
- B. responses that the MX appliance receives on the connectivity-testing IP addresses on the Security & SD- WAN > Firewall page
- C. responses that the MX appliance receives on the connectivity-testing IP address that is configured on the Security & SD-WAN > SD-WAN & Traffic Shaping page
- D. responses that the MX appliance receives on the connectivity-testing IP addresses on the Help > Firewall info page

Answer: B

NEW QUESTION 24

Which information is used to calculate whether a WAN link has high usage?

- A. data under Security & SD WAN > Appliance Status > Uplink > Live Data
- B. total historical throughput of an uplink
- C. total number of devices that are actively passing traffic
- D. value under Security & SD WAN > SD WAN & Traffic Shaping > Uplink Configuration

Answer: D

NEW QUESTION 29

Refer to the exhibit.

Meraki

NETWORK

EMEAR-TRAINER-DEMO

Network-wide

Security & SD-WAN

Switch

Wireless

Cameras

Insight

Organization

SD-WAN & traffic shaping

Uplink configuration

WAN 1

4 Gbps

details

WAN 2

4 Gbps

details

Cellular

Unlimited

details

Uplink statistics

Test connectivity to

8.8.8.8

Add a destination

Description

Google

Default

Actions

×

List update interval

WAN 1

Hourly

WAN 2

Hourly

simple

Cellular

Hourly

Uplink selection

Global preferences

Primary uplink

WAN 1

Load balancing

Enabled

Disabled

Flow preferences

Internet traffic

There are no uplink preferences for Internet traffic configured on this network.

Add a preference

Which two actions are required to optimize load balancing asymmetrically with a 4:1 ratio between links? (Choose two.)

- A. Change the primary uplink to "none".
- B. Add an internet traffic preference that defines the load-balancing ratio as 4:1.
- C. Enable load balancing.
- D. Set the speed of the cellular uplink to zero.
- E. Change the assigned speeds of WAN 1 and WAN 2 so that the ratio is 4:1.

Answer: BC

NEW QUESTION 32

When wireless SSIDs are configured in Dashboard, which setting on the Access Control page affects the ability of a 2.4 GHz only client device from associating to the WLAN for the first time?

- A. Content filtering

- B. Bridge mode
- C. 802.11r
- D. Dual band operating with Band Steering

**Answer:** D

#### NEW QUESTION 36

What are two ways peers interact with ports that Auto VPN uses? (Choose two.)

- A. For IPsec tunneling, peers use high UDP ports within the 32768 to 61000 range.
- B. Peers contact the VPN registry at UDP port 9350.
- C. For IPsec tunneling, peers use high TCP ports within the 32768 to 61000 range.
- D. Peers contact the VPN registry at TCP port 9350.
- E. For IPsec tunneling, peers use UDP ports 500 and 4500.

**Answer:** BC

#### NEW QUESTION 41

Which Cisco Meraki product must be deployed in addition to Systems Manager so that Systems Manager Sentry enrollment can be used?

- A. MS Switch
- B. Meraki Insight
- C. MR Access Point
- D. MV Smart Camera

**Answer:** C

#### NEW QUESTION 44

What is a feature of distributed Layer 3 roaming?

- A. An MX Security Appliance is not required as a concentrator.
- B. An MX Security Appliance is required as a concentrator.
- C. All wireless client traffic can be split-tunneled.
- D. All wireless client traffic is tunneled.

**Answer:** A

#### NEW QUESTION 45

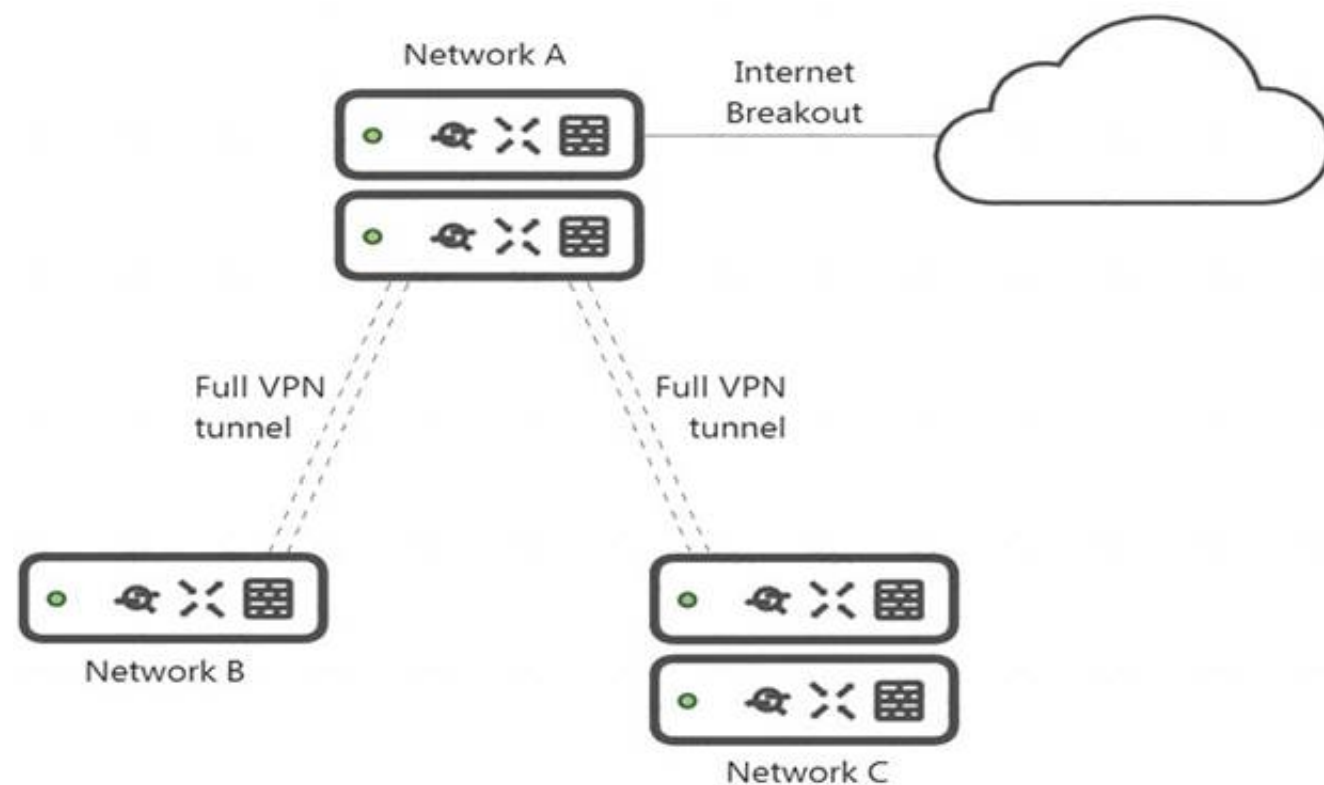
Which Cisco Meraki best practice method preserves complete historical network event logs?

- A. Configuring the preserved event number to maximize logging.
- B. Configuring the preserved event period to unlimited.
- C. Configuring a syslog server for the network.
- D. Configuring Dashboard logging to preserve only certain event types.

**Answer:** A

#### NEW QUESTION 46

Refer to the exhibit.



What is the minimal Cisco Meraki Insight licensing requirement?

- A. A single Meraki Insight license must be configured on network A to gain Web App Health visibility on network B.
- B. A single Meraki Insight license must be configured on network B to gain Web App Health visibility on network B.
- C. A single Meraki Insight license must be configured on network A, and a single license must be configured on network B, to gain Web App Health visibility on network B.

- D. Two Meraki Insight licenses must be configured on network A to gain Web App Health visibility on network B.  
E. Two Meraki Insight licenses must be configured on network A and a single license must be configured on network B, to gain Web App Health visibility on network B.

**Answer:** E

#### NEW QUESTION 48

Company iPads are enrolled in Systems Manager without supervision, and profiles are pushed through Systems Manager. Which outcome occurs when a user attempts to remove the “Meraki Management” profile on an iPad?

- A. The “Meraki Management” profile cannot be removed.  
B. The “Meraki Management” profile is removed and then pushed automatically by Systems Manager.  
C. The “Meraki Management” profile is remove  
D. All the profiles that Systems Manager pushed are also removed.  
E. The “Meraki Management” profile is remove  
F. All the profiles Systems Manager pushed remain.

**Answer:** C

#### NEW QUESTION 50

Which Meraki Dashboard menu section is accessed to enable Sentry enrollment on an SSID?

- A. Wireless > Configure > Access Control  
B. Wireless > Configure > Splash page  
C. Wireless > Configure > Firewall & Traffic Shaping  
D. Wireless > Configure > SSIDs

**Answer:** A

#### NEW QUESTION 53

Which two primary metrics does Meraki Insight use to calculate the Application Performance Score? (Choose two.)

- A. Maximum Jitter  
B. Total Bandwidth Usage  
C. Maximum Latency  
D. Per-flow Goodput  
E. Application Response Time

**Answer:** DE

#### NEW QUESTION 57

Which three verbs of request are available in the Cisco Meraki API? (Choose three.)

- A. SET  
B. PUT  
C. PATCH  
D. ADD  
E. POST  
F. GET

**Answer:** BEF

#### NEW QUESTION 61

Which requirement is needed to implement Fast Lane on Cisco Meraki APs?

- A. wireless profile installed on an Apple iOS device  
B. wireless profile installed on a Cisco iOS access point  
C. adaptive 802.11r disabled  
D. traffic shaping rule tagging traffic with a DSCP value of 46 to Apple.com

**Answer:** A

#### NEW QUESTION 66

.....



## Relate Links

**100% Pass Your 500-220 Exam with ExamBible Prep Materials**

<https://www.exambible.com/500-220-exam/>

## Contact us

We are proud of our high-quality customer service, which serves you around the clock 24/7.

Viste - <https://www.exambible.com/>