



Juniper

Exam Questions JN0-663

Service Provider Routing and Switching Professional (JNCIP-SP)

NEW QUESTION 1

Which two statements are correct about Opaque LSAs in OSPF? (Choose two)

- A. Type 9 LSAs are used for graceful-restart and have link-local scope
- B. Type 11 LSAs are used for MPLS label exchange and have link-local scope
- C. Type 10 LSAs are used for MPLS traffic-engineering and have area scope.
- D. Type 11 LSAs are used for MPLS traffic-engineering and have area scope

Answer: AB

NEW QUESTION 2

What are two reasons an IBGP learned route would be hidden? (Choose two.)

- A. The route is suppressed by damping.
- B. The route has a next hop of the local routing device.
- C. The route is rejected by an export policy.
- D. The route has an empty AS path.

Answer: AB

NEW QUESTION 3

Exhibit.

```
user@R1> show configuration protocols evpn
encapsulation vxlan;
default-gateway no-gateway-community;
extended-vni-list all;
```

```
user@R1> show configuration switch-options
vtep-source-interface lo0.0;
route-distinguisher 192.168.101.2:65101;
vrf-import EVPN-IMPORT;
vrf-target {
    target:1:100;
    auto;
}
```

```
user@R2> show configuration protocols evpn
vni-options {
    vni 22030 {
        vrf-target target:65101:22030;
    }
}
encapsulation vxlan;
default-gateway no-gateway-community;
extended-vni-list all;
```

```
user@R2> show configuration switch-options
vtep-source-interface lo0.0;
route-distinguisher 192.168.101.2:65101;
vrf-target {
    target:1:100;
    auto;
```

You are using EVPN to provide Layer 2 stretched VLANs between two sites You notice that the MAC addresses in either site are not showing up on the remote site.

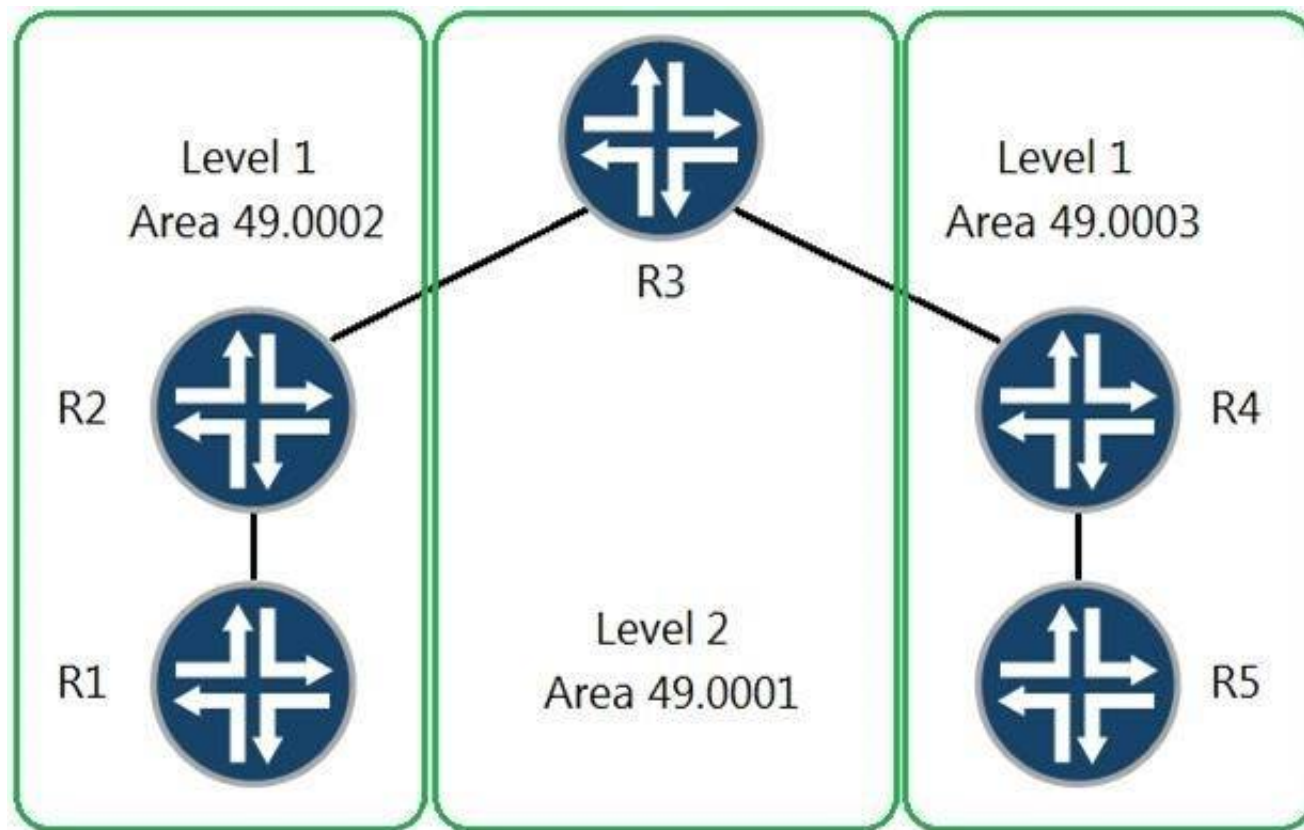
Referring to the exhibit, what are two ways to solve this problem? (Choose two)

- A. On R1, issue the sec 3wicch-cpt:.cr.3 vrf-target target: 65101:22030 Command
- B. On R2 issue the set protocols evpn vni-options vni 22030 command
- C. On R1, issue the sec protocols evpn vni-options vni 22030 vrf-target target:65101:22030 command
- D. On R2, issue the set switch-options vrf-target target: 65101:22030 command

Answer: AD

NEW QUESTION 4

Exhibit:



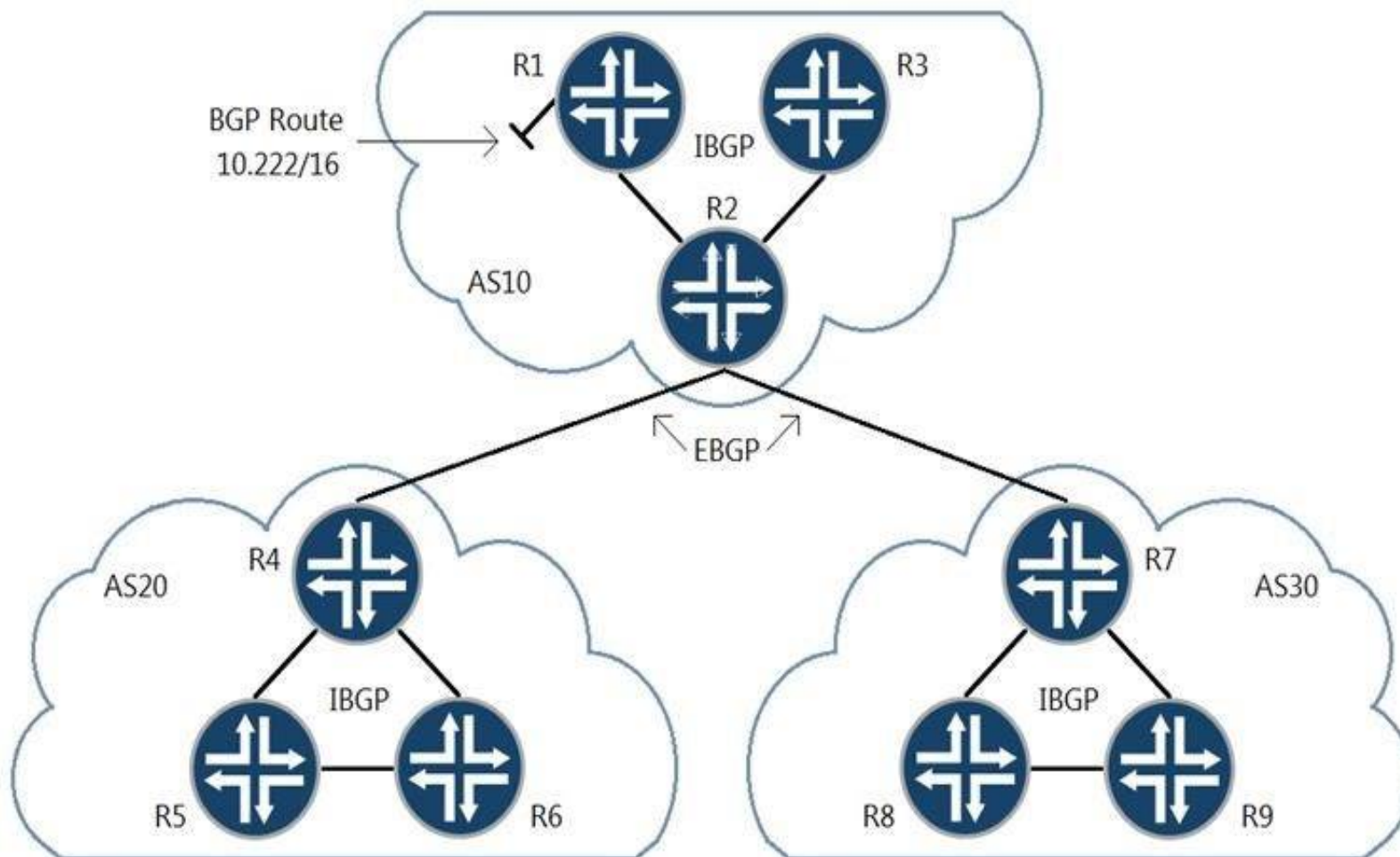
All adjacencies have been formed, no extra options have been configured, and no policies have been written. Referring to the exhibit, which two statements are correct? (Choose two.)

- A. R1 cannot reach R5
- B. R1 will create its own default route that points to R2
- C. R2 will create a default route and send it as a TLV to R1
- D. R1 can reach R5.

Answer: CD

NEW QUESTION 5

Exhibit:



Referring to the exhibit, which three statements about route 10.222/16 are correct when using the default BGP advertisement rules? (Choose three)

- A. R2 will advertise 10.222/16 to R4 with itself as the next hop.
- B. R2 will prepend AS10 when advertising 10.222/16 to R7.
- C. R7 will advertise 10.222/16 to R9 with itself as the next hop.
- D. R1 will advertise 10.222/16 to R2 with itself as the next hop.
- E. R1 will prepend AS10 when advertising 10.222/16 to R2.

Answer: ABD

NEW QUESTION 6

Exhibit:


```
user@router> show ospf route 30.0.0.0/24
```

Topology default Route Table:

Prefix	Path	Route	NH	Metric	NextHop	Nexthop
	Type	Type	Type		Interface	Address/LSP
30.0.0.0/24	Ext2	Network	IP	0	ge-0/0/1.0	5.0.0.1

```
user@router> show route protocol ospf 30.0.0.0/24
```

inet.0: 21 destinations, 23 routes, (21 active, 0 holddown, 0 hidden)

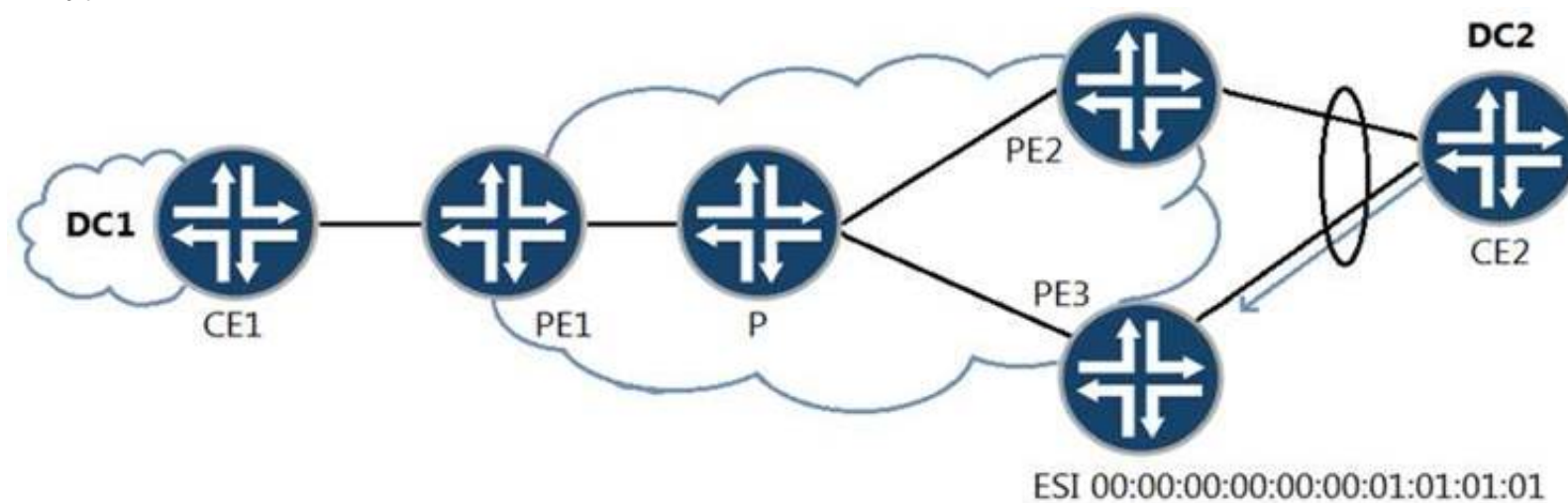
You notice an inconsistency between the routing table and the OSPF database, as shown in the exhibit. What are two reasons for this behavior? (Choose two.)

- A. The LSA is a Type 4 LSA.
- B. An OSPF export policy is being applied to the route.
- C. An OSPF import policy is being applied to the route.
- D. The LSA is a Type 5 LSA.

Answer: CD

NEW QUESTION 7

Exhibit:



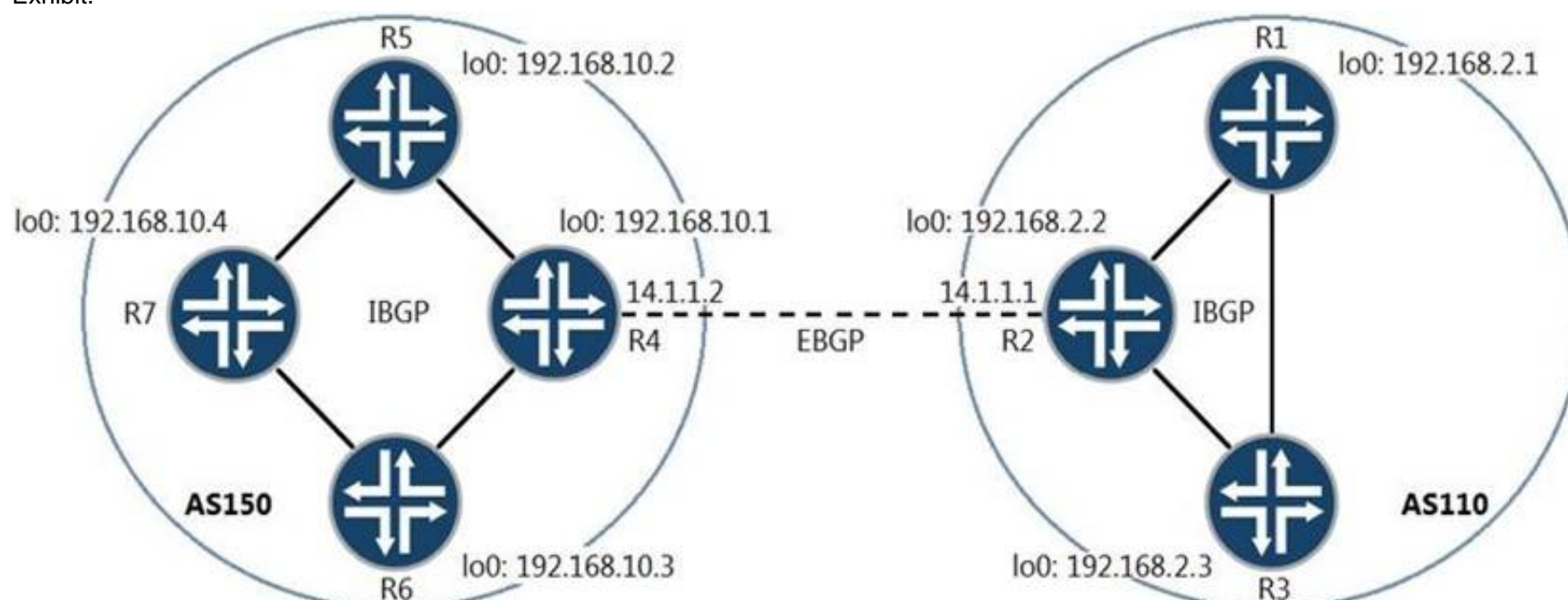
Referring to the exhibit, traffic sent from CE-A2 to PE3 does not loop back to CE-A2 through PE2. Which two EVPN functions accomplish this task? (Choose two.)

- A. split horizon
- B. aliasing
- C. multicast ingress replication
- D. designated forwarder election

Answer: AD

NEW QUESTION 8

Exhibit.



Referring to the exhibit, which two statements are correct for a route advertised by R1 towards R4? (Choose two)

- A. The BGP next hop is set to 192.168.2.2 by R2
- B. The BGP next hop is set to 14.1.1.1 by R2
- C. The AS path is set to null by R2
- D. The AS path is set to 150 by R2

Answer: B

NEW QUESTION 9

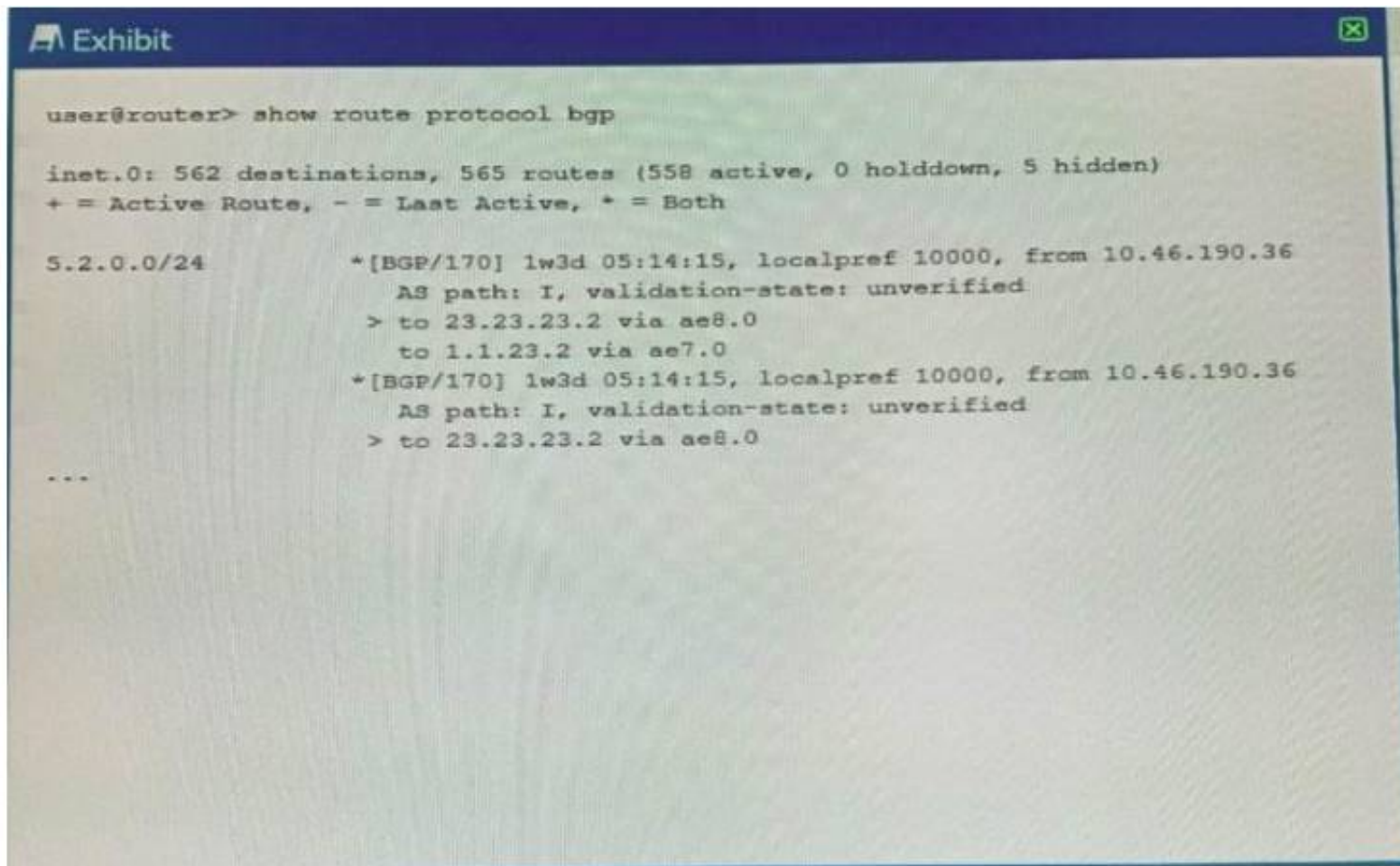
Why do interprovider option B VPNs scale better than interprovider option A VPNs?

- A. The ASBRs in interprovider option B VPNs only carry internal routes.
- B. The ASBRs in interprovider option A VPNs do not need per-VPN VRF tables.
- C. The ASBRs in interprovider option A VPNs only carry internal routes.
- D. The ASBRs in interprovider option B VPNs do not need per-VPN VRF tables.

Answer: D

NEW QUESTION 10

Exhibit:



```

user@router> show route protocol bgp

inet.0: 562 destinations, 565 routes (558 active, 0 holddown, 5 hidden)
+ = Active Route, - = Last Active, * = Both

5.2.0.0/24          *[BGP/170] 1w3d 05:14:15, localpref 10000, from 10.46.190.36
                   AS path: I, validation-state: unverified
                   > to 23.23.23.2 via ae8.0
                   to 1.1.23.2 via ae7.0
                   *[BGP/170] 1w3d 05:14:15, localpref 10000, from 10.46.190.36
                   AS path: I, validation-state: unverified
                   > to 23.23.23.2 via ae8.0
...
  
```

Referring to the exhibit, which statement is true?

- A. The route is learned from only one neighbor.
- B. This is a multipath route.
- C. The route is learned from three different neighbors.
- D. This is a multihop route.

Answer: D

NEW QUESTION 10

Exhibit:

```

user@host> show pim join 234.100.0.1 extensive
Instance: PIM.master Family: INET
R = Rendezvous Point Tree, S = Sparse, W = Wildcard

Group: 234.100.0.1
Source: 192.168.100.2
Flags: sparse, spt
Active upstream interface: ge-1/0/0.0
Active upstream neighbor: 192.168.101.2
MoFRR Backup upstream interface: ge-1/0/1.0
MoFRR Backup upstream neighbor: 192.168.102.2
Upstream state: Join to Source, No Prune to RP
Keepalive timeout: 300
Uptime: 00:00:15
Downstream neighbors:
  Interface: ge-1/2/0.0
    192.168.103.2 State: Join Flags: S Timeout: Infinity
    Uptime: 00:00:15 Time since last Join: 00:00:15
Number of downstream interfaces: 1
  
```

Which three statements are true about the show pim join output shown in the exhibit? (Choose three.)

- A. This is a source-specific multicast stream
- B. G The multicast receiver is still using the RP to receive the stream.
- C. The multicast stream does not have an RP.
- D. The multicast stream has been configured with a backup path to allow for fast reroute.
- E. The shortest path to the source is through the RP

Answer: BCD

NEW QUESTION 12

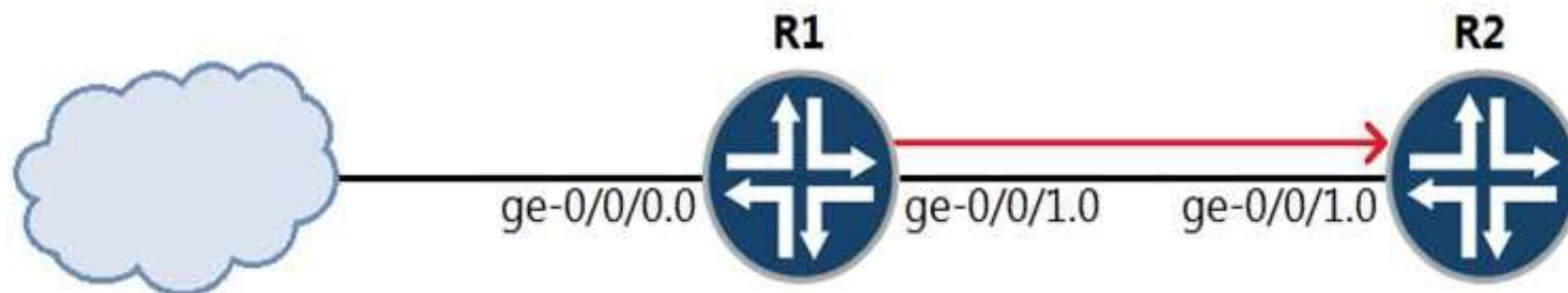
You are establishing a Layer 3 VPN between two PE devices. Currently you have a single internal IPv4 BGP peering between the PE devices. You must ensure that the IPv4 and IPv6 routes from both CE devices are exchanged between these sites. Which two statements are correct in this scenario? (Choose two.)

- A. You must establish an IPv6 BGP peering between the two PEs
- B. You must enable the inet-vpn NLR on both PE devices.
- C. You must enable the inet6-vpn NLRI on both PE devices.
- D. You must enable IPv6 tunneling on the LSPs between the PE devices

Answer: BC

NEW QUESTION 17

Exhibit:



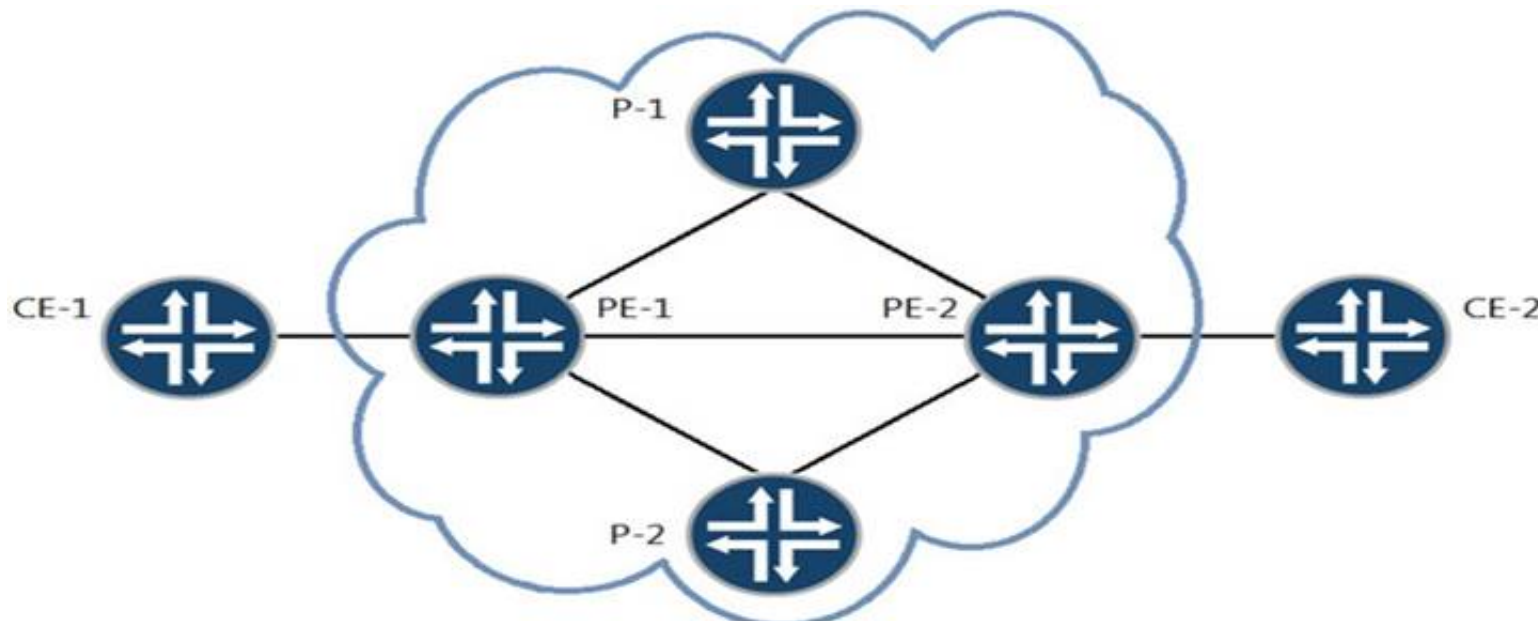
R1 assigns incoming voice traffic to the ef forwarding class. All other traffic is assigned to the best-effort forwarding class. You have configured a CoS re-write rule on R1 to include the correct CoS bit values in packets sent towards R2. You want R2 to classify traffic using the CoS markings created by R1. Which two configuration steps are necessary to accomplish this task? (Choose two.)

- A. Configure a CoS re-write rule on R2 and assign matching CoS values.
- B. Assign the CoS re-write rule to the ge-0/0/1.0 interface on R2.
- C. Assign the behavior aggregate classifier to the ge-0/0/1.0 interface on R2.
- D. Configure a behavior aggregate classifier on R2.

Answer: BC

NEW QUESTION 20

Exhibit:



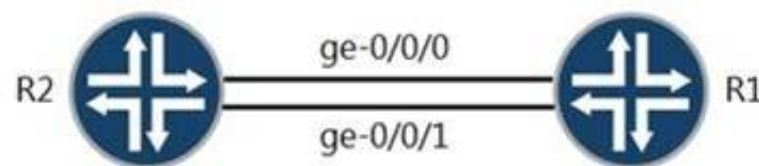
A Layer 3 VPN exists in the provider network and the CE devices are connecting to the PE devices using BGP. The PE devices are receiving BGP routes from the CE devices and the PE devices have the CE BGP routes in their respective routing tables. However, the remote CE devices are not receiving the BGP routes. Referring to the exhibit, what is the problem?

- A. The CE devices are detecting an AS loop
- B. A VRF target community mismatch exists.
- C. A route distinguisher mismatch exists.
- D. The PE devices are detecting an AS loop.

Answer: A

NEW QUESTION 25

Exhibit:



```

user@R2# show interfaces
ge-0/0/0 {
  unit 0 {
    family iso;
    family inet6 {
      address 2001:db8::2/64;
    }
  }
}
ge-0/0/1 {
  unit 0 {
    family inet {
      address 172.16.2.2/24;
    }
    family iso;
    family inet6 {
      address 2001:db8:1::2/64;
    }
  }
}
user@R2# show protocols isis
interface ge-0/0/0.0;
interface ge-0/0/1.0;
interface lo0.0 {
  passive;
}
topologies ipv6-unicast;
  
```

```

user@R1# show interfaces
ge-0/0/0 {
  unit 0 {
    family iso;
    family inet6 {
      address 2001:db8::1/64;
    }
  }
}
ge-0/0/1 {
  unit 0 {
    family iso;
    family inet6 {
      address 2001:db8:1::1/64;
    }
  }
}
user@R1# show protocols isis
interface ge-0/0/0.0;
interface ge-0/0/1.0;
interface lo0.0 {
  passive;
}
topologies ipv6-unicast;
  
```

A network administrator is migrating from IPv4 to IPv6 and one of the IS-IS adjacencies is not coming up between R1 and R2. Which action will solve the problem?

- A. Configure an IPv4 address on interface ge-0/0/1 on R1.
- B. Configure topologies ipv4-unicast from protocols isis on R2.
- C. Remove topologies ipv6-unicast from protocols isis on R1.
- D. Remove topologies ipv6-unicast from protocols isis on R2.

Answer: A

NEW QUESTION 27

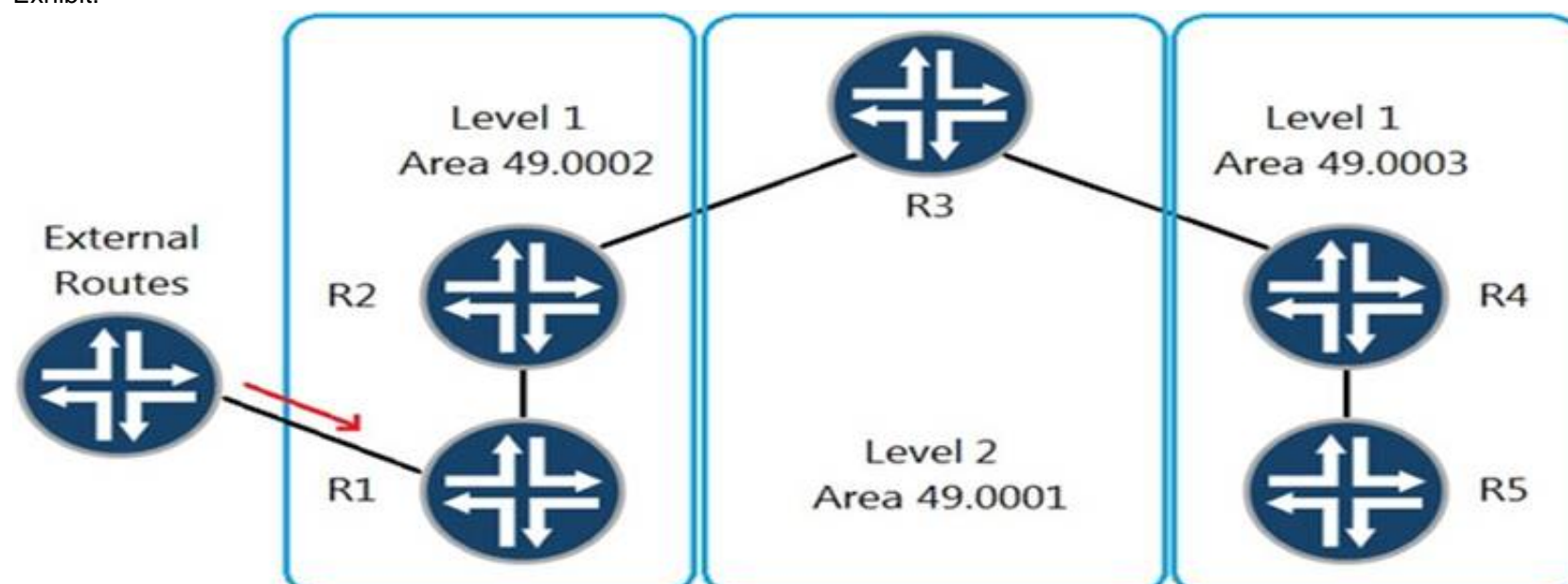
You are creating a new LDP signaled Layer 2 circuit between three customer sites. In this scenario, which two statements are correct? (Choose two.)

- A. LDP is used to exchange the virtual circuit labels with other PEs.
- B. You are allowed to tunnel your LDP sessions through RSVP LSPs.
- C. You are not allowed to use any RSVP-signaled LSPs in your core network.
- D. BGP is used to exchange the virtual circuit labels with other PEs.

Answer: AB

NEW QUESTION 31

Exhibit:



Referring to the exhibit, external routes are being received at R1. These routes must appear on R5. Which action will produce this result?

- A. Turn on wide metrics on R1 and R2 and write an export policy on R4 from level 2 to level 1 matching the external routes.
- B. Turn on wide metrics on R4 and R5 and write an export policy on R2 from level 1 to level 2 matching the external routes.
- C. Write an export policy on R4 from level 2 to level 1 matching the external routes.
- D. Write an export policy on R2 from level 1 to level 2 matching the external routes.

Answer: A

NEW QUESTION 32

Exhibit:

```
user@R2# show protocols isis
level 1 disable;
interface ge-0/0/0.0;
interface ge-0/0/1.0 {
    level 2 metric 300;
}
```



```
user@R1# show protocols isis
level 1 disable;
interface ge-0/0/0.0;
```

```
user@R3# show protocols isis
level 1 disable;
interface ge-0/0/1.0;
```

AREA 49.0001

Referring to the exhibit, what will the IS-IS cost be for R1 to reach R3?

- A. 301
- B. 73
- C. 20
- D. 310

Answer: D

NEW QUESTION 37

You are configuring a BGP signaled Layer 2 VPN across your MPLS enabled core network. In this scenario, which statement is correct?

- A. You must ensure that all interfaces within the site's configuration are explicitly defined with their remote site identifier values.
- B. This type of VPN requires the support of the l2vpn signaling NLRI on all route reflectors and participating PE devices.
- C. You must use a unique route distinguisher value on all PE devices in your environment.
- D. This type of VPN is only supported over LSPs that are using traffic-engineering.

Answer: B

NEW QUESTION 40

You must deploy an interprovider VPN option that ensures that the ASBRs do not need to store any VPN routes. In this scenario, which interprovider VPN option should you choose?

- A. option B
- B. option A
- C. option C
- D. option D

Answer: C

NEW QUESTION 45

Exhibit:


```
(65001)R1-----R2-----R3(65001)
```

```
[edit]
```

```
user@R2# run show route 11.11.11.0/24
```

```
inet.0 : 11 destinations, 12 routes (11 active, 0 holddown, 0 hidden)
+ = Active Route, - = Last Active, * = Both
```

```
11.11.11.0/24      *[BGP/170] 00:04:55, localpref 100
                   AS path: 65001 I, validation-state: unverified
                   > to 172.16.1.1 via ge-0/0/0.0
                   [BGP/170] 00:10:33, localpref 100
                   AS path: 65001 65001 I, validation-state: unverified
```

```
[edit]
```

```
user@R2# show protocols bgp
```

```
group R1 {
  neighbor 172.16.1.1 {
    peer-as 65001;
  }
}
```

```
group R3 {
  neighbor 172.16.2.1 {
    peer-as 65001;
  }
}
```

```
local-as 65002;
```

```
[edit]
```

```
user@R2# show policy-options
```

```
policy-statement lb {
  then {
    load-balance per-packet;
  }
}
```

```
policy-statement prepend {
  term 1 {
    then as-path-prepend 65001;
  }
}
```

```
[edit]
```

```
user@R2# show routing-options
```

```
forwarding-table {
  export lb;
}
```

R2 is receiving the same route from R1 and R3. You must ensure that you can load balance traffic for that route. Referring to the exhibit, which two configuration changes will allow load balancing? (Choose two.)

- A. Configure multipath under group R1.
- B. Configure multipath under the global BGP configuration.
- C. Apply the prepend policy as an import policy under group R3.
- D. Apply the prepend policy as an import policy under group R1.

Answer: BD

NEW QUESTION 50

.....

Thank You for Trying Our Product

We offer two products:

1st - We have Practice Tests Software with Actual Exam Questions

2nd - Questions and Answers in PDF Format

JN0-663 Practice Exam Features:

- * JN0-663 Questions and Answers Updated Frequently
- * JN0-663 Practice Questions Verified by Expert Senior Certified Staff
- * JN0-663 Most Realistic Questions that Guarantee you a Pass on Your First Try
- * JN0-663 Practice Test Questions in Multiple Choice Formats and Updates for 1 Year

100% Actual & Verified — Instant Download, Please Click
[Order The JN0-663 Practice Test Here](#)