

Exam Questions HPE6-A71

Scalable WLAN Design and Implementation (SWDI) 8.4

<https://www.2passeasy.com/dumps/HPE6-A71/>



NEW QUESTION 1

Refer to the exhibit.

```
MC1) #show user role employee
Users
-----
IP           MAC           Name           Role           Age(d:h:m)    AP name        Roaming        User Type
-----
10.1.100.5   00:11:50:e7:bb:bb   employee      00:00:00       tunnel 15     Wired         TUNNELED USER
```

Once connected to a WLAN, a user cannot reliably access resources in a company's network. Based on the output shown in the exhibit, what can be determined about the user's connection?

- A. The user has successfully authenticated through use of PEAP.
- B. The user is connected to a controller through use of the VIA client.
- C. The user is connected wirelessly to a controller.
- D. The user is connected to an ArubaOS-Switch.

Answer: D

NEW QUESTION 2

An administrator creates a user role that department A in a company uses. Various other roles exist for other departments. All employees connect to the same ESSID, which authenticates to an external AAA server. How should the administrator configure to assign the appropriate roles to the employees?

- A. implement default roles
- B. implement server-derived roles
- C. implement user roles
- D. implement AAA profile roles

Answer: B

NEW QUESTION 3

An administrator wants to implement the MultiZone feature in a company's network to segregate corporate and guest traffic. Corporate traffic will have APs establish connections to a cluster managed by a Mobility Master (MM), and guest traffic will have the same APs establish connections to a standalone controller at the company's DMZ.

What is true about the implementation of MultiZones in this scenario?

- A. The MultiZone feature must be enabled in the data zone.
- B. The primary zone maintains full control of AP management and configuration.
- C. The primary and data zones must be in the same L2 subnet.
- D. A MultiZone AP can initially connect to any zone to obtain its configuration.

Answer: B

NEW QUESTION 4

Which configuration command enables an Aruba Mobility Controller (MC) to send AMON messages to an AirWave System?

- A. auth-server
- B. snmp-server
- C. mgmt-server
- D. tunneled-node-server

Answer: C

NEW QUESTION 5

Which device can terminate to a cluster of Aruba Mobility Controllers (MCs) that run ArubaOS.8.x?

- A. BLE Beacon
- B. Mobility Master
- C. Mesh Point
- D. RAP

Answer: D

Explanation:

Only MCs can be actual cluster members-MMs cannot be cluster members. Cluster members can terminate Campus APs (CAP) and Remote APs (RAP). Mesh APs will be supported in a future version.

NEW QUESTION 6

A branch office location has two buildings: an office and a small warehouse that are within 20 meters of each other. A RAP at the branch office provides connectivity to the corporate office network. This RAP is also configured as a Remote Mesh Portal (RMP).

Which solution should the administrator implement to provide connectivity between the office and small warehouse buildings at the branch office location?

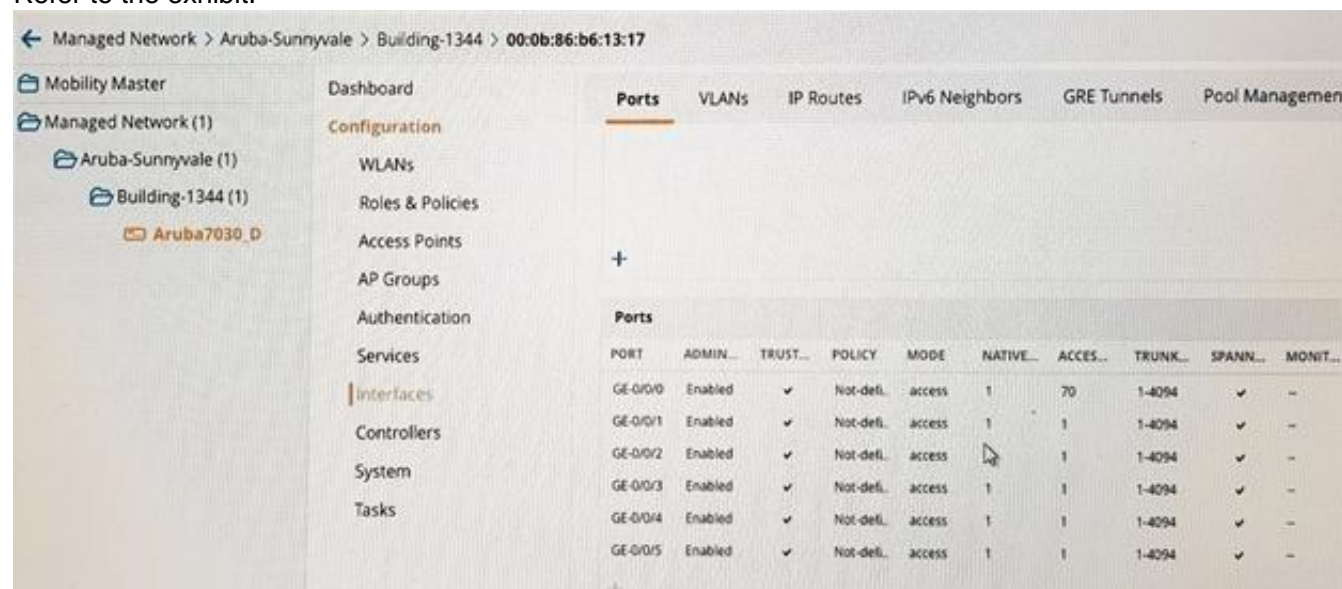
- A. Deploy a Remote Mesh Portal in the warehouse building to connect to the Remote Mesh Portal in the office building.

- B. Deploy a Remote Mesh Point AP in the warehouse building to connect to the Remote Mesh Portal in the office building.
- C. Deploy an ArubaOS-Switch in the warehouse building with tunneled node to connect to the Remote Mesh Portal in the office building.
- D. Deploy a Mesh Point AP in the warehouse building to connect to the Remote Mesh Portal in the office building.

Answer: D

NEW QUESTION 7

Refer to the exhibit.



Managed Network > Aruba-Sunnyvale > Building-1344 > 00:0b:86:b6:13:17										
Mobility Master		Dashboard	Ports	VLANs	IP Routes	IPv6 Neighbors	GRE Tunnels	Pool Management		
Managed Network (1)		Configuration								
Aruba-Sunnyvale (1)		WLANs								
Building-1344 (1)		Roles & Policies								
Aruba7030_D		Access Points								
		AP Groups								
		Authentication								
		Services								
		Interfaces								
		Controllers								
		System								
		Tasks								
PORT	ADMIN...	TRUST...	POLICY	MODE	NATIVE...	ACCES...	TRUNK...	SPANN...	MONIT...	
GE-0/0/0	Enabled	✓	Not-def.	access	1	70	1-4094	✓	—	
GE-0/0/1	Enabled	✓	Not-def.	access	1	1	1-4094	✓	—	
GE-0/0/2	Enabled	✓	Not-def.	access	1	1	1-4094	✓	—	
GE-0/0/3	Enabled	✓	Not-def.	access	1	1	1-4094	✓	—	
GE-0/0/4	Enabled	✓	Not-def.	access	1	1	1-4094	✓	—	
GE-0/0/5	Enabled	✓	Not-def.	access	1	1	1-4094	✓	—	

An administrator configures a split-tunnel policy to be used by RAPs at branch offices. Under the Configuration section on the Mobility master (MM) shown in the exhibit, where should the administrator configure the split-tunnel mode so that it can be deployed to the RAPs?

- A. WLAN
- B. Roles & Policies
- C. Access Points
- D. Services

Answer: A

NEW QUESTION 8

Which RAP WLAN operation mode should an administrator configure if the SSID should only be advertised if controller connectivity is lost?

- A. Standard
- B. Persistent
- C. Backup
- D. Always

Answer: C

NEW QUESTION 9

An administrator needs to add connectivity between two buildings that are within 15 meters of each other on a company's campus. The administrator decides to implement Aruba's wireless mesh feature between an AP in each building. How should the administrator deploy the two APs to implement the mesh feature?

- A. one as a Mesh Portal AP and one as a Remote Mesh Point AP
- B. one as a Mesh Portal AP and one as a Mesh Point AP
- C. one as a Remote Mesh Portal AP and one as a Remote Mesh Point AP
- D. one as a campus AP and one as a Mesh Point AP

Answer: B

NEW QUESTION 10

A customer uses an SIP application that is not supported by Aruba United Communications and Collaboration (UCC). Which voice deployment mode should the administrator implement on Aruba Mobility Controllers (MCs) to support this application?

- A. Heuristic mode
- B. SDN-API mode
- C. QoS-mode
- D. WMM-only mode

Answer: D

NEW QUESTION 10

Which two protocols does AirWave use to monitor Aruba Mobility Controllers ()?

- A. PAPI and AMON
- B. SNMP and AMON
- C. PAPI and GRE
- D. SNMP and SSH

Answer: B

NEW QUESTION 15

An administrator creates new pre-and post-authentication roles for a new WLAN. For which profile should the administrator assign these new roles under the Managed Network section?

- A. Server Groups
- B. Virtual AP
- C. 802.1X
- D. AAA profile

Answer: D

NEW QUESTION 20

An administrator configures a port on a RAP through the association of an AAA profile with 802.1X authentication to a RAP Ethernet port. This port connects to a switch with user desktops attached. The administrator notices that when users connect wirelessly to the RAP, a user role correctly restricts their traffic. But, when users connect with their wired desktops, they are assigned an initial role and routed to a Captive Portal page. What must the administrator do to enable desktop usage based on the user's role assignment?

- A. Implement ACLs on the RAP port.
- B. Apply a server-derived role policy to the RAP port.
- C. Identify the RAP port as untrusted.
- D. Map the RAP port to an authentication profile.

Answer: C

NEW QUESTION 21

An administrator configures a network scan set in AirWare to scan a subnet to discover new switches. The scan completes and AirWave successfully uses the SNMP credentials to validate SNMP access. However, SSH access fails and the administrator must manually configure the SSH credentials used for all of these devices.

To prevent this problem in the future, what should the administrator complete prior to running the network scan?

- A. Define the SSH communication parameters under the Group's Manage section.
- B. Define a scan credentials set that includes the SSH communication parameters.
- C. Define the SSH communication parameters under the AP/Device's Manage section.
- D. Define the SSH communication parameters for the Default Credentials under Device Setup section.

Answer: D

NEW QUESTION 22

An administrator implements blacklisting of users that fail authentication functions three or more times. By default, how long will these users have to wait before they can successfully log into the network again?

- A. 15 minutes
- B. 1 hour
- C. 4 hour
- D. 24 hours

Answer: B

Explanation:

https://www.arubanetworks.com/techdocs/ArubaOS_63_Web_Help/Content/ArubaFrameStyles/New_WIP/Clie

NEW QUESTION 24

A VIA client tries to initially connect to corporate office controller through an intermediate firewall. However, the VPN connection fails. The administrator examines the firewall rules and determines that rules for UDP 4500 and UDP 500 are configured.

Which additional protocol must be allowed in the firewall rules to resolve this connection failure?

- A. TCP 389
- B. UDP 4500
- C. UDP 8200
- D. TCP 993

Answer: B

NEW QUESTION 26

An administrator has ArubaOS-Switches that support tunneled node. The administrator wants to tunnel all user traffic from the Ethernet ports on the switches, and have the controllers authenticate the user traffic and apply the appropriate user role.

Which implementation meets these requirements?

- A. Role-based tunneled node with the controllers configured for standalone mode
- B. Role-based tunneled node with the controllers configured in a cluster
- C. Per-port tunneled node with the controllers configured for standalone mode
- D. Per-port tunneled node with the controllers configured in a cluster

Answer: C

NEW QUESTION 28

IEEE 802.11r relies on which technology to reduce re-authentication delays when clients roam between APs?

- A. Fast BSS Transition
- B. Temporal Key Integrity
- C. Robust Security Network
- D. Opportunistic Key Caching

Answer: A

NEW QUESTION 32

An administrator wants to implement a Live Upgrade (in-service upgrade) of a cluster in an Aruba wireless solution. Which ArubaOS feature does the Mobility Master (MM) use to ensure RF redundancy, so that when one or more APs are rebooted there is no loss of wireless coverage for users?

- A. AirMatch
- B. Mobility Controller load balancing
- C. AP image preload
- D. AP image verification

Answer: A

NEW QUESTION 37

An administrator deploys an Aruba Mobility Controller 7005 to a branch office. The administrator accidentally disables the console port on the controller. Which controller command should the administrator use to re-enable the console port?

- A. mgmt-user console
- B. console enable
- C. console reset
- D. no mgmt-user console-block

Answer: D

NEW QUESTION 40

An administrator deploys an Aruba wireless solution comprised of:

- a pair of Mobility Masters (MMs)
- multiple Mobility Controllers (MCs) and virtual Mobility Controllers (VMCs)
- an AirWave server
- a ClearPass server

The Aruba Mobility solution runs ArubaOS 8.X.

Which component in this environment globally defines and deploys VLANs for wireless users?

- A. Mobility Controller or Virtual Mobility Controller
- B. AirWave server
- C. Mobility Master
- D. ClearPass server

Answer: C

Explanation:

<https://www.arubanetworks.com/products/networking/gateways-and-controllers/mobility-master/>

NEW QUESTION 43

Where on the Mobility Master (MM) can an administrator configure the VIA connection profile?

- A. L2 Authentication
- B. L3 Authentication
- C. AAA Profiles
- D. User Roles

Answer: B

NEW QUESTION 44

An administrator supports an Aruba wireless solution that uses ClearPass to implement server role assignment. A user reports that they are not able to access the correct department resources. The administrator determines from the connected controller that the user is associated to the login user profile instead of the department user profile.

What should the administrator examine on the ClearPass server to determine the Aruba VSA User Role value that ClearPass returns to the controller?

- A. Accounting
- B. Event Viewer
- C. Audit Viewer
- D. Access Tracker

Answer: D

NEW QUESTION 49

An administrator wants to implement bandwidth limits to restrict employee access to high-risk web sites. On the Mobility Master (MM), where would the administrator define these limits?

- A. 802.1X policy
- B. User role
- C. Firewall policy
- D. AAA policy

Answer: B

Explanation:

Bandwidth limit we can edit at "ROLE Page"

NEW QUESTION 50

An administrator stages an AP and re-provisions it as a RAP from the Mobility Master (MM). When re-provisioning the RAP, the administrator must enter a user's credentials. What is the purpose of these credentials?

- A. to authenticate users on wired and wireless ports
- B. to authenticate the RAP device
- C. to authenticate users on wireless ports
- D. to authenticate users on wired ports

Answer: B

NEW QUESTION 55

A company opens a new branch office and a RAP is used to connect to a corporate office Aruba Mobility Controller (MC). The company needs to provide connectivity to the office across the street. There is an AP across the street. However, there is no wired connectivity between the buildings. Which actions can the administrator select to provide the required connectivity? (Choose two.)

- A. Provision all Aps at the branch office as Mesh Points.
- B. Provision all Aps at the branch offices as Mash Portals.
- C. Implement one of the Aps as a Mesh Point.
- D. Provision the RAP as a Mesh Portal.
- E. Implement two mesh clusters.

Answer: AD

NEW QUESTION 60

An administrator adds local administrative accounts to manage the Aruba Mobility Controllers (MCs). Which role should be assigned to an administrator who needs to only generate reports and monitor WLANS and ports?

- A. Location-api-management
- B. Network-operations
- C. Root
- D. AP-provisioning

Answer: B

NEW QUESTION 61

An administrator configures an ArubaOS-Switch for per-user tunneled node. Which protocols does the switch use to establish and maintain a connection with the Aruba Mobility Controller (MC)? (Select two.)

- A. GRE
- B. SSL
- C. PAPI
- D. IPSec

Answer: AC

NEW QUESTION 62

An administrator mistakenly configures the wrong VLAN setting on a managed controller's interface. This causes the controller to lose management access to the Mobility Master (MM). The administrator knows that the auto roll-back feature will revert the managed controller to a previous configuration that was used prior to the change.

Which command can the administrator use to validate that the rollback process is successful?

- A. show debug
- B. show switches
- C. show config status
- D. show controller-ip

Answer: B

NEW QUESTION 66

Which Aruba Mobility Controller (MC) administrative role should an administrator assign to a receptionist so that they can create and manage guest accounts?

- A. guest-provisioning
- B. receptionist
- C. guest-operator
- D. network-operations

Answer: A

NEW QUESTION 70

An administrator deploys Aruba Mobility Controller 7005s to a company's branch offices. The administrator wants to disable the console port to prevent unauthorized access to the controllers.

Which controller command should the administrator use to implement this policy?

- A. no console enable
- B. no mgmt-user console
- C. mgmt-user console-block
- D. console disable

Answer: C

NEW QUESTION 73

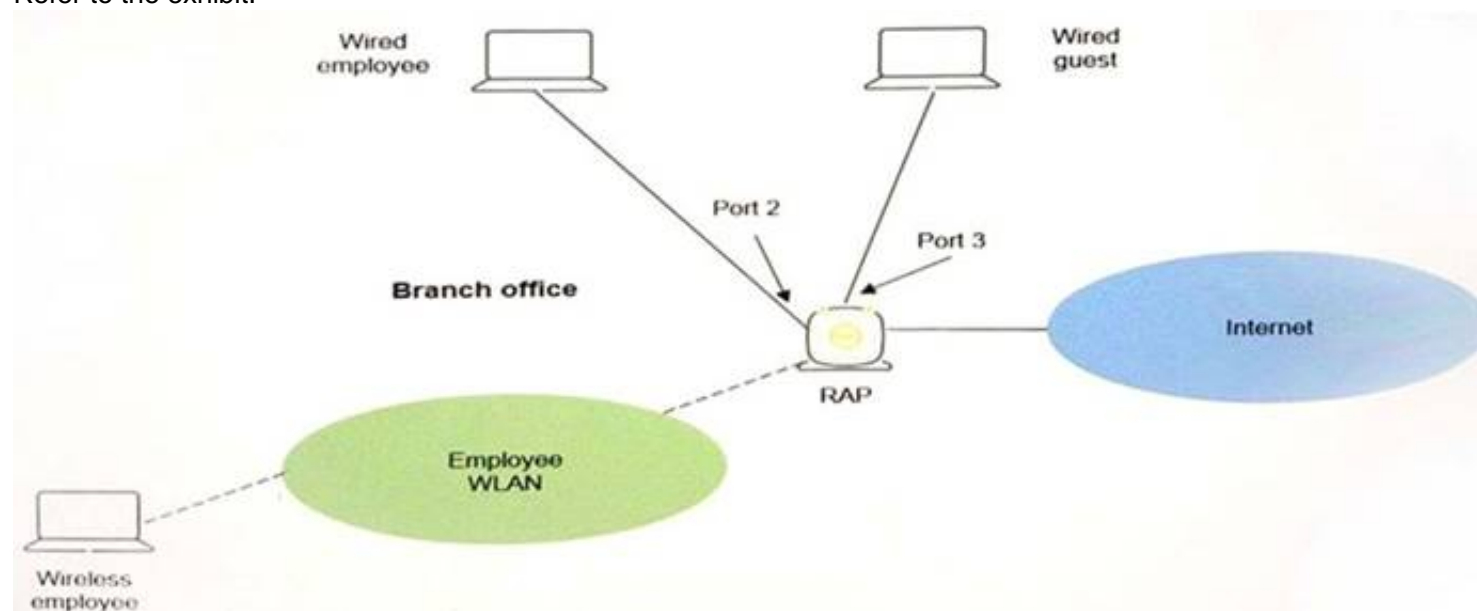
An administrator wants to add a new folder in AirWave. Where would the administrator perform this action?

- A. in AMP Setup
- B. in AP/Devices
- C. in Groups
- D. in Device Setup

Answer: B

NEW QUESTION 78

Refer to the exhibit.



The branch office RAP shown in the exhibit provides secure wireless employee access. Because of security concerns, the company's security policy does not allow wireless guest access. Some customers that visit the Branch office need Internet access. A RAP's Ethernet Port 3 is used for wired guest access and Port 2 is used for wired employee access. When employees connect to Port 2, they are authenticated successfully and split-tunnel policy allows them access to both corporate and Internet resources from the Branch office. Guest users, however, cannot access Internet resources on Port 3.

How can the administrator provide guest users Internet access?

- A. Implement ClientMatch to handle the employee and guest user traffic correctly.
- B. Implement the MultiZone feature on the RAP.
- C. Configure a bridge role for the wired RAP port.
- D. Create a guest VAP that allows wired RAP port access.

Answer: C

Explanation:

https://www.arubanetworks.com/techdocs/ArubaOS%206_3_1_Web_Help/Content/ArubaFrameStyles/Remote_

NEW QUESTION 79

Refer to the exhibit.



An administrator configures policies to allow RAPs to connect to the corporate office and remote users to access resources. Which function does the VPN address pool serve in this situation?

- A. Assigns an inner IP address to the RAP used within the VPN
- B. Assigns a public IP address that the RAP should use on its internet port
- C. Assigns IP addresses for remote users
- D. Assigns a DHCP address pool for the RAP

Answer: A

NEW QUESTION 81

An administrator needs to authenticate users connected to an ArubaOS-Switch where the switch authenticates the user, assign the firewall policies to the user, and processes some of the users' traffic. Which connection method should the administrator configure on the ArubaOS-Switch?

- A. Per-user tunneled mode
- B. Per-port tunneled mode
- C. VLAN tunneled mode
- D. Split-tunneled mode

Answer: A

NEW QUESTION 84

An administrator wants to implement bandwidth limits for guest users to restrict their Internet usage. On the Mobility Master (MM), where would the administrator define these limits?

- A. User role
- B. Firewall policy
- C. AAA policy
- D. 802.1X policy

Answer: A

NEW QUESTION 87

An administrator configures AirGroup policies to define which Apple services are visible and available to wireless users in a campus WLAN. However, the policies are not being enforced.

Where must the administrator enable the AirGroup functionality on the Mobility Master (MM) so that the policies will be in effect?

- A. At the Mobility Master hierarchy
- B. At the controller level in the Managed Network hierarchy
- C. At the Access Points level in the Managed Network hierarchy
- D. At the global Managed Network hierarchy

Answer: D

NEW QUESTION 92

Which forwarding mode is used for a WLAN if a RAP needs to decrypt all user traffic and forward it locally?

- A. Split-tunnel
- B. Bridge
- C. Tunnel
- D. Decrypt-tunnel

Answer: B

NEW QUESTION 97

A guest establishes an authenticated wireless session to an Aruba Mobility Controller (MC). The controller uses a ClearPass server for all AAA functions. Which AAA component disconnects the user when the guest exceeds their allowed duration?

- A. RADIUS Change of Authorization
- B. Active Directory Session Limits
- C. RADIUS Authorization Profile
- D. SNMP Disconnect

Answer: A

NEW QUESTION 99

An administrator wants to implement a cluster of Aruba Mobility Controllers (MCs). Which guideline should be followed?

- A. Implement Virtual Mobility Controllers and Mobility Controllers in the cluster to provide scalability.
- B. Verify that all the controllers run the same release of software.
- C. Purchase a cluster license to enable clustering
- D. Implement High Availability (HA) AP Fast Failover for redundancy.

Answer: B

NEW QUESTION 103

Which protocol is used to tunnel user traffic when an administrator implements tunneled mode between an ArubaOS-Switch and an Aruba Mobility Controller (MC)?

- A. IPSec
- B. AMON
- C. PAPI
- D. GRE

Answer: D

NEW QUESTION 108

An administrator supports a RAP at a branch office. A user's device that is attached to the Ethernet port is assigned an 802.1X AAA policy and is configured for tunneled mode.

How is the user's traffic transmitted to the corporate office?

- A. It is not encapsulated by GRE and not protected with IPSec.
- B. It is encapsulated by GRE and protected with IPSec.
- C. It is not encapsulated by GRE but is protected with IPSec.
- D. It is encapsulated by GRE and not protected with IPSec.

Answer: B

NEW QUESTION 113

Refer to the exhibit.

```
CT1# show ap remote debug mgmt -frames ap-name AP1
```

Timestamp	stype	SA	DA	..Misc
Mar 3 05:35:49	deauth	d8:c7:c8:20:30:60	ac:f1:df:01:49:69	Response to EAP
Challenge failed				
Mar 3 05:35:19	assoc- resp	d8:c7:c8:20:30:60	ac:f1:df:01:49:69	Success
Mar 3 05:35:19	assoc- resp	ac:f1:df:01:49:69	d8:c7:c8:20:30:60	-
Mar 3 05:35:19	auth	d8:c7:c8:20:30:60	ac:f1:df:01:49:69	Success
Mar 3 05:35:19	auth	ac:f1:df:01:49:69	d8:c7:c8:20:30:60	-

A user uses a wireless client for a wireless session. Based on the output shown in the exhibit for the selected Aruba AP, what is the possible problem with this user's wireless session?

- A. The user is configured for PEAP, but the WLAN profile implemented EAP-TLS.
- B. The AP has reached the limit for number of users connected to the radio.
- C. The user misconfigured the Windows Managed Network Settings profile.
- D. The user is associated with a failed 802.1X/EAP authentication

Answer: D

NEW QUESTION 114

An administrator implements machine authentication in an 802.1X profile. Which user role will be assigned to the user's session if machine authentication fails, but the 802.1X user authentication passes for a user who connects?

- A. 802.1X default user role
- B. Machine authentication initial user role
- C. 802.1X initial user role
- D. Machine authentication default user role

Answer: D

NEW QUESTION 117

An administrator supports Aruba Mobility Controllers (MCs) managed by a Mobility Master (MM) in a noncluster deployment. The administrator performs these tasks on the MM for the MCs:

- Enables L3 IP mobility for the respective VAPs on the MCs
- Creates a L3 domain and places the MCs in the domain

However, roaming does not work when users roam from an AP connected to one controller in the domain to an AP connected to a different controller in the domain.

What must the administrator do to fix this problem?

D18912E1457D5D1DDCBD40AB3BF70D5D

- A. Configure the same VLANs on the Mobility Controllers in the L3 domain.
- B. Re-provision the APs associated with the Mobility Controllers.
- C. Enable L3 IP Mobility globally on the Mobility Controllers.
- D. Create a home-agent-to-foreign-agent mapping table.

Answer: D

NEW QUESTION 122

An administrator configures Unified Communications and Collaboration (UCC) heuristics mode on an Aruba Mobility Master (MM). What should be modified in order to send items such as VoIP sessions and monitored information about adds, updates, deletions, and periodic snapshots of those VoIP sessions on the MM or the Aruba Mobility Controller (MC)?

- A. OpenFlow Controller profile
- B. Mgmt Config profile
- C. Skype ALG Configuration profile
- D. OpenFlow profile

Answer: B

NEW QUESTION 123

An administrator wants to reduce downtime of the wireless network when controllers are upgraded. Which Aruba OS feature should the administrator implement to reduce the amount of downtime the Aps will experience at the time of the upgrade process?

- A. Centralized upgrades
- B. AP apboot mode bypass
- C. AP fast start
- D. AP image preload

Answer: D

NEW QUESTION 124

An administrator has multiple AAA servers, some Microsoft RADIUS and some ClearPass. When 802.1X users authenticate, the administrator wants to ensure that the authentication requests are handled by the appropriate AAA server. Users enter their username in this format: username@domain_name.

What must the administrator implement to ensure the correct AAA server processes the authentication request?

- A. server matching rules for the VAP profile
- B. server matching rules for the server group
- C. server matching rules for the AAA profile
- D. server matching rules for the 802.1X profile

Answer: B

NEW QUESTION 125

An administrator needs to authenticate users connected to an ArubaOS-Switch. The Aruba Mobility Controller (MC) authenticates the user and assigns user roles to wired users.

Which mode should the administrator configure on the MC?

- A. Per-user tunneled node
- B. Per-port tunneled node
- C. VLAN tunneled node
- D. Split-tunneled node

Answer: B

NEW QUESTION 129

An administrator deploys a RAP at a branch office. The RAP should send all employee corporate traffic to the Mobility Controller (MC) and Internet traffic should stay local.

Which forwarding mode should the administrator configure for the employee WLAN to allow for this forwarding?

- A. Tunnel
- B. Decrypt-tunnel
- C. Bridge
- D. Split-tunnel

Answer: D

NEW QUESTION 134

A group of users on the same floor of a campus residence experience connectivity problems continuously throughout the morning. The administrator suspects that it is a L1 problem with physical interference.

What can the administrator do to find the cause of this problem?

- A. Access a controller's spectrum analysis data directly from AirWave with Quick Links.
- B. Access RAPIDS data from AirWave's RAPIDS section.
- C. Access RAPIDS data from AirWave's dashboards, under Home.
- D. Access a controller's spectrum analysis data from AirWave's dashboards, under Home.

Answer: A

NEW QUESTION 137

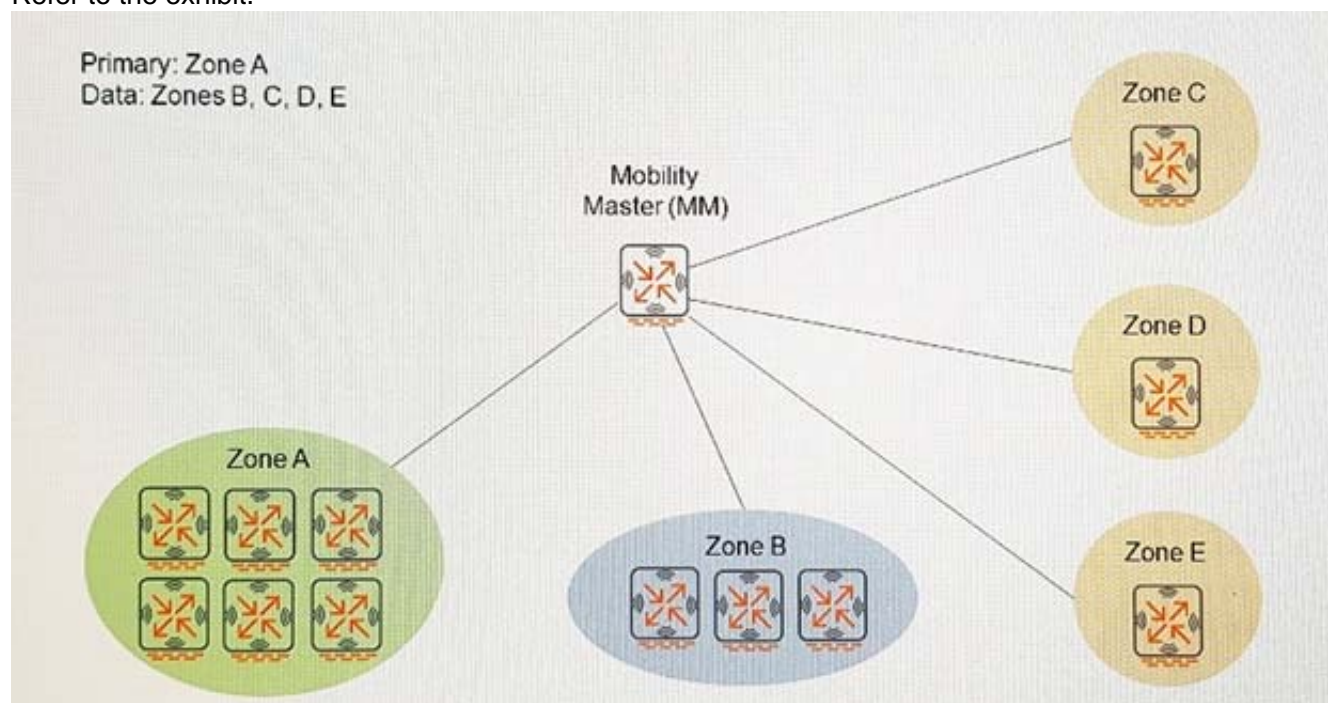
An administrator currently manages an L2 cluster with Aruba Mobility Controllers (MCs) that run ArubaOS 8.x. What happens when the administrator enables AP load balancing?

- A. AP load balancing occurs when the rebalance and unbalance thresholds are met.
- B. Users must re-authenticate if they are moved from one controller to another because load balancing is performed.
- C. Balancing of users is based on a hash of their IP address.
- D. AP load balancing is triggered based on the amount of user traffic that users generate.

Answer: A

NEW QUESTION 138

Refer to the exhibit.



An administrator implements the MultiZone feature. The administrator sets up five zones as shown in the exhibit in this configuration:

-Zone A has six controllers that form a cluster.

-Zone B has three controllers that form a cluster.

-Zones C, D, and E have a single standalone controller each.

A total of 13 VAPs are created across the five zones. Aruba Mobility Controllers (MCs) in Zones A, B and C run ArubaOS 8.1.0.1 MCs in zones D and E run ArubaOS 8.1.0.2. Some APs do not join their respective data zones.

What could cause this problem?

- A. The number of controllers exceeds the maximum for MultiZone.
- B. The MCs run different versions of the ArubaOS code.
- C. The number of zones exceeds the maximum for MultiZone.
- D. The number of VAPs exceeds the maximum for MultiZone.

Answer: B

NEW QUESTION 139

An administrator configures the MultiZone feature for a company network, where a mobility cluster is the primary zone and a standalone controller in the company's DMZ represents a secondary data zone. The administrator configures two AP Groups and respective VAPs for the zones on the Mobility Master (MM) in the primary zone. When the APs boot up and establish connections to both zones, the administrator notices that no data connections are established to the data zone.

What must the administrator do to fix this problem?

- A. Configure the same AP Groups and VAPs on the standalone controller, and associate the MultiZone APs to both groups.
- B. Configure the same AP Group in the data zone as it is in the primary zone, and configure the VAPs in the data zone.
- C. Have the MultiZone APs initially boot from the standalone controller in the data zone.
- D. Create different AP groups and VAPs on the Mobility Master and standalone controllers, and associate the MultiZone APs to both groups.

Answer: B

NEW QUESTION 141

An administrator implements a ClearPass solution to authenticate Aruba wireless users. The Aruba wireless solution is an ArubaOS 8.x Mobility Master (MM) deployment. ClearPass sends an Aruba VSA role name for an authenticated user. However, the administrator notices that the role assigned to the user is different from the one assigned by the ClearPass server.

Which two items should the administrator verify that might be the cause of this problem? (Choose two.)

- A. Enablement of user roles on the controller
- B. Spelling of the role on the ClearPass server
- C. Server-derived role assignment on the ClearPass server
- D. Role existence on the Managed Network
- E. Order assignment that the controller uses to select a user role

Answer: BD

NEW QUESTION 143

Refer to the exhibits.

Exhibit 1: WLAN VAP configuration

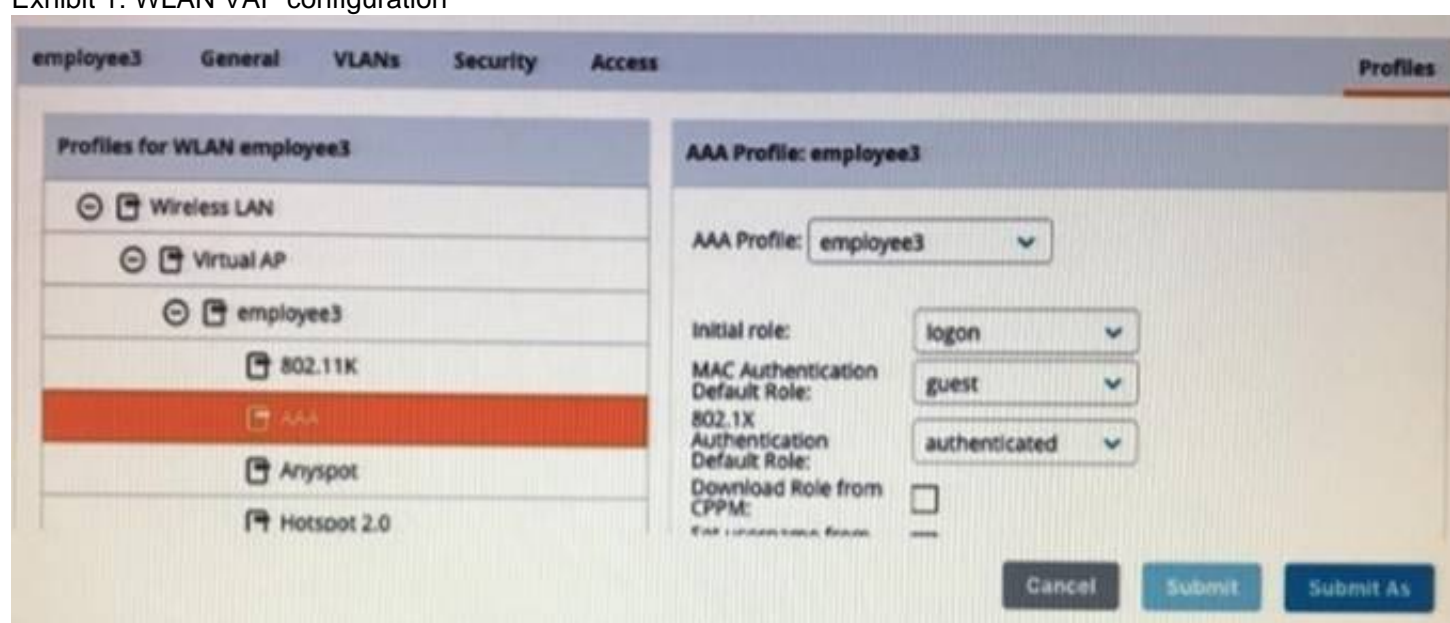


Exhibit 2: Microsoft NPS server configuration

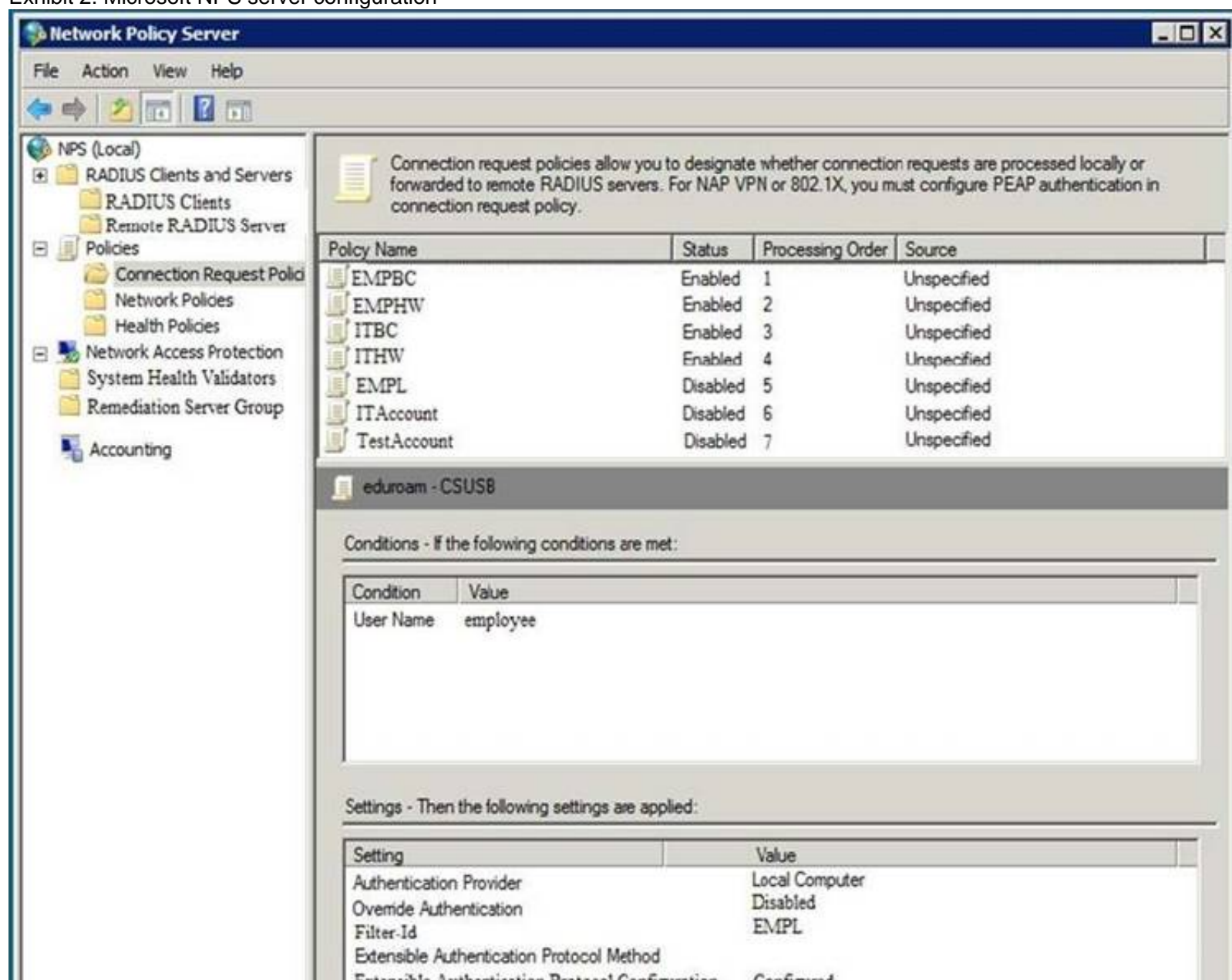


Exhibit 3: Server group configuration for the VAP.

Dashboard	Auth Servers	AAA Profiles	L2 Authentication	L3 Authentication	User Rules	Advanced
Configuration	Server Groups 4					
WLANs	NAME	SERVICES	FAIL THROUGH	LOAD BALANCE	SERVER RULES	
Roles&Policies	default	1	-	-	1	
Access Points	internal	1	-	-	1	
AP Groups	Server-Group-Aruba	3	-	-	2	
	employee	1	-	-	0	
Authentication	+					
Services	Server Group>Server-Group-Aruba-HPE		Servers	Options	Server Rules	
Interfaces						
Controllers	ATTRIBUTE	OPERATION	OPERAND	TYPE	ACTION	VALUE
System	Filter-Id	value-of	-	string	set role	-
Tasks	Filter-Id	equals	corporate	string	set role	employee

An employee authenticates with the username employee and the correct password. However, once the user authenticates, an administrator notices that the employee is assigned the authenticated role and not the desired employee role. What should the administrator do to solve this problem?

- A. Add a new server group rule on the controller.
- B. Associate the user to the employee group in Microsoft NPS.
- C. Change the server group name on the controller.
- D. Reference the employee role in the WLAN VAP on the controller.

Answer: A

Explanation:

We have to add new rule:

Filter-Id – equals – EMPL – string – set role – employee

NEW QUESTION 144

An administrator uses a ClearPass server to perform user authentication and download the role configuration that should be applied to the user's session. The server is associated to an AAA profile of a VAP. However, when a user connects to the SSID of the VAP, they are assigned the default role. What must the administrator do to ensure that the role is downloaded and used?

- A. Enable download role for CPPM in the VAP's WLAN profile.
- B. Enable server derivation in the ClearPass' RADIUS configuration.
- C. Enable server derivation in the server group.
- D. Enable server derivation in the AAA Server Group.

Answer: A

NEW QUESTION 149

Which network components are tracked by Aruba Clarity? (Choose two.)

- A. Wireless associations
- B. DNS lookups
- C. AP and controller health
- D. WLAN health
- E. Client health

Answer: AB

NEW QUESTION 151

An administrator configures an ArubaOS switch for per-user tunneled node. Which protocol does the switch use to communicate with the Aruba Mobility Controller (MC)?

- A. GRE
- B. SSL
- C. PAPI
- D. IPSec

Answer: A

NEW QUESTION 154

An administrator troubleshoots a roaming problem where a user loses connectivity to the network during the roaming process. To help troubleshooting this problem, which device or devices in a wireless network initiates the roaming process?

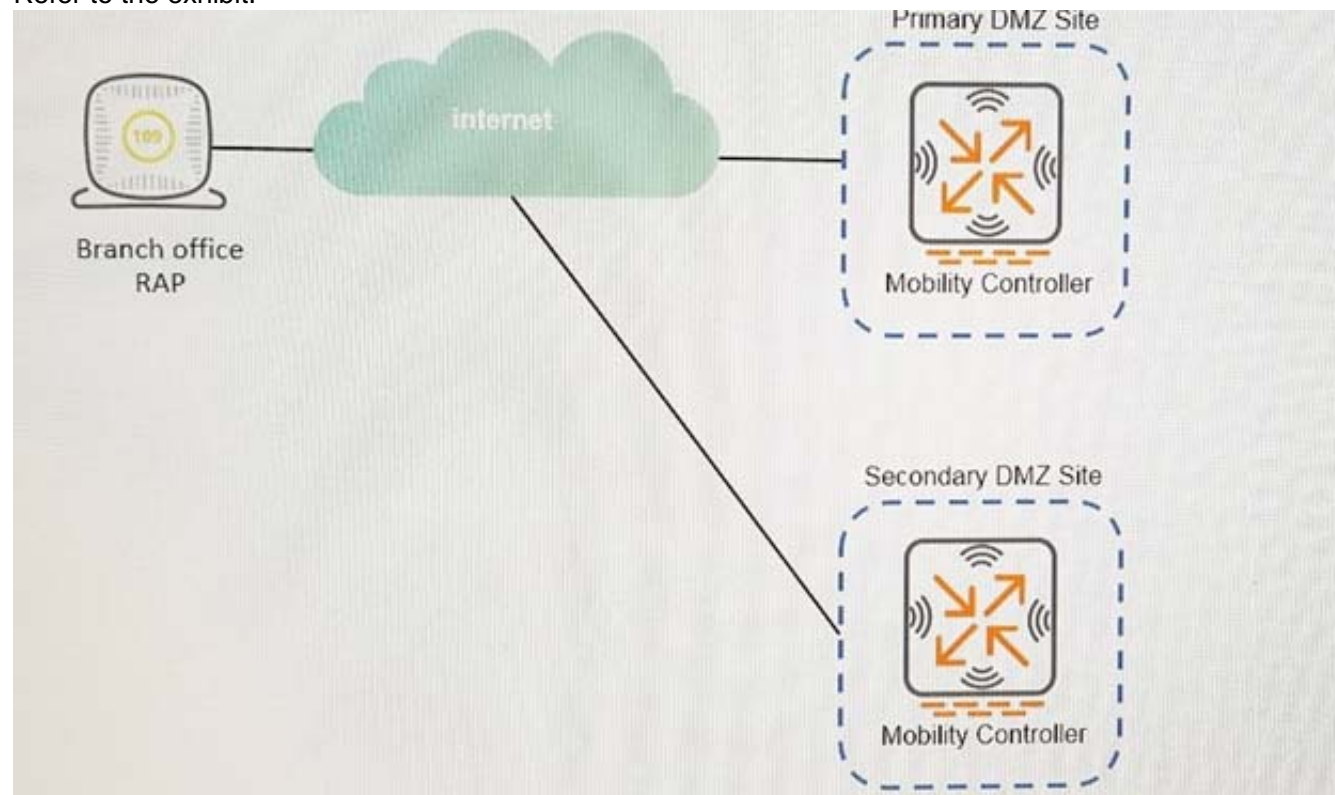
- A. Both the client and the controller

- B. The AP
- C. The Client
- D. The Controller

Answer: C

NEW QUESTION 156

Refer to the exhibit.



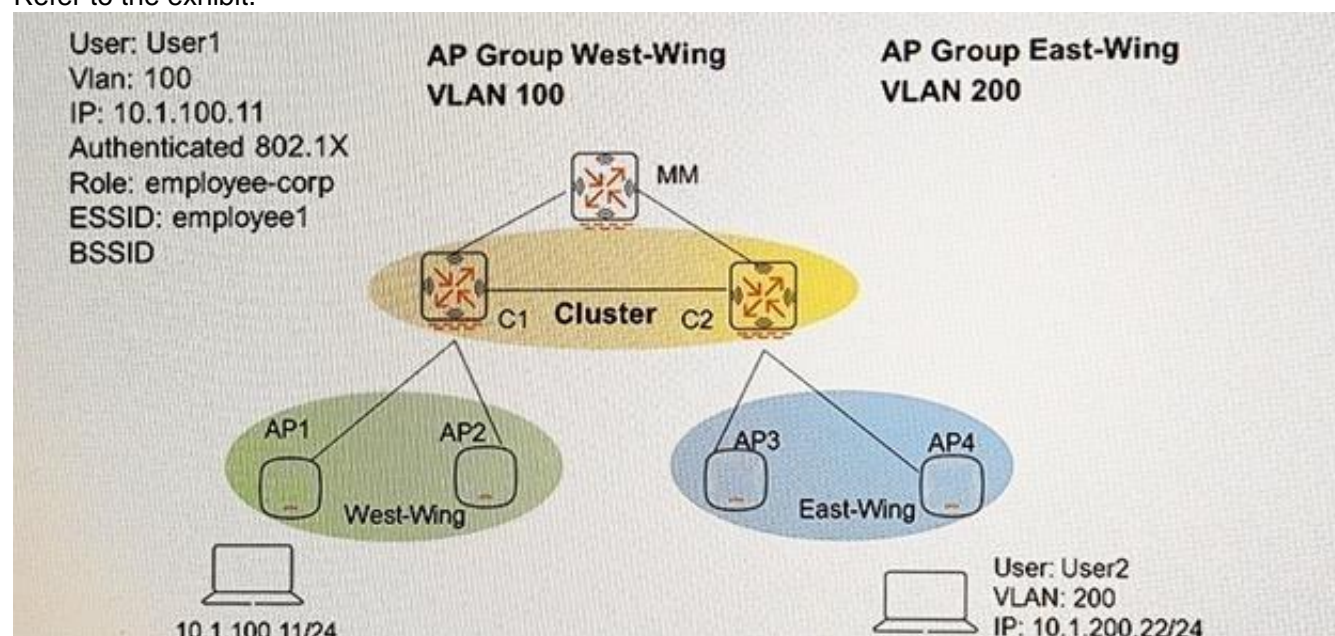
An administrator supports a RAP at a branch office shown in the exhibit. The company has one Mobility Controller (MC) at the Primary DMZ site and one at the Secondary DMZ site. The RAP is configured to connect to only the MC at the Primary DMZ site. A network outage with the ISP at the Primary DMZ site causes the RAP to reboot. Upon reboot, the RAP cannot build a tunnel to the Secondary DMZ site MC because the administrator forgot to add the Second LMS IP address to the AP Group configuration. Once the RAP can successfully connect, the administrator can add the Secondary DMZ MC as a backup LMS to fix the AP Group. What should the administrator implement to allow the RAP to connect to the MC at the Secondary DMZ site while the outage at the primary site persists?

- A. Dynamic discovery through DHCP Option 43
- B. Static configuration from apboot mode
- C. Dynamic discovery through DHCP Option 60
- D. Dynamic discovery through multicast ADP

Answer: B

NEW QUESTION 160

Refer to the exhibit.



Controllers are configured in a cluster as shown in the exhibit. These are the network details.

- A Mobility Master (MM) manages the cluster.
- The cluster contains two controllers: C1 and C2.
- AP1 and AP2 use C1 as their Active AP Anchor Controller (A-AAC), with C2 as their Standby AAC (S-AAC).
- AP3 and AP4 use C2 as their A-AAC with, C1 as their S-AAC.

User1 establishes a wireless connection via AP1, where the Active User Controller (U-UAC) assigned is C1, with C2 as the standby. What happens when User1 roams the wireless network and eventually their session is handled by AP3?

- A. The AP3's A-AAC switches to C1, and the user's A-UAC remains on C1.
- B. The AP3's A-AAC switches to C2, and the user's A-UAC remains on C2.
- C. The AP3's A-AAC switches to C1, and the user's A-UAC remains on C2.
- D. The AP3's A-AAC switches to C2, and the user's A-UAC remains on C1.

Answer: D

NEW QUESTION 162

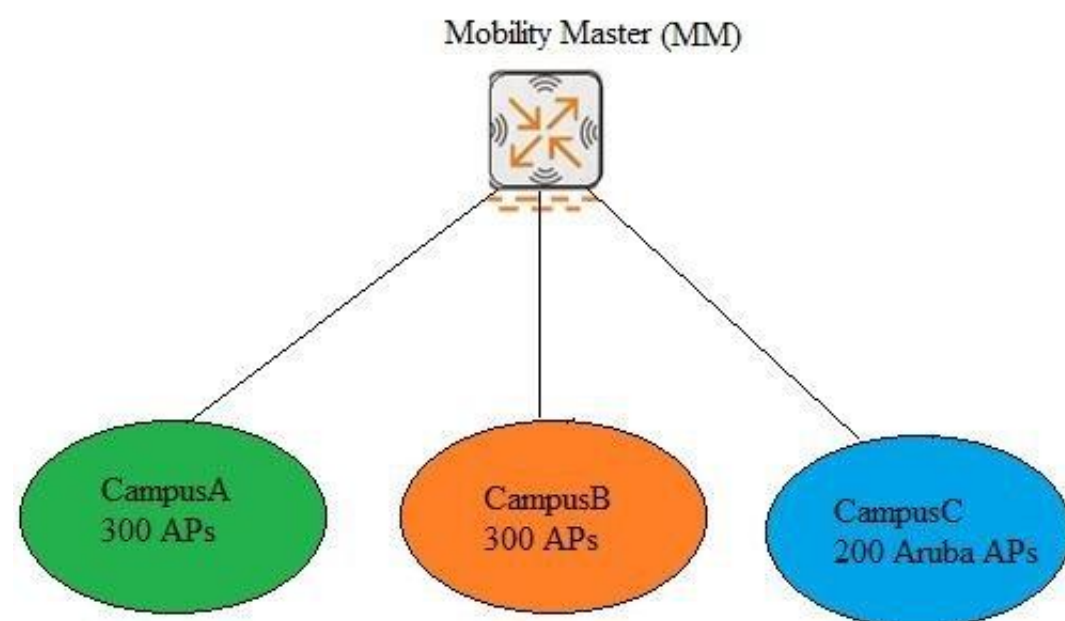
An administrator manages an Aruba wireless network. ClearPass is used to centralize AAA functions. The administrator wants to implement server role derivation. Which information will the ClearPass server return in regards to the user role assignment?

- A. RADIUS VSA User-Role
- B. Aruba VSA Firewall-Role
- C. Aruba VSA Aruba-User-Role
- D. RADIUS VSA Firewall-Role

Answer: C

NEW QUESTION 164

Refer to the exhibit.



An administrator implements AP licensing on a Mobility Master (MM). Network engineers at CampusA want to deploy an additional 100 APs. Currently all of the AP licenses in CampusA and CampusB are allocated, but only 200 of the AP licenses in CampusC are allocated.

- > Each campus is responsible to purchase its own AP licenses.
- > There are 900 AP licenses deployed in the global pool.
- > There are three dedicated pools.
- > From the global pool, 300 AP licenses are assigned to each dedicated pool.

What can the administrator do to add capacity for CampusA in alignment with campus policies?

- A. Allow CampusA to share from the CampusC pool.
- B. Add 100 more AP licenses and assign them to the CampusA pool.
- C. Move 100 licenses from the CampusC pool to the global pool.
- D. Add 100 more AP licenses to the global pool.

Answer: C

NEW QUESTION 166

Which protocol communicates RF neighborhood information to an Aruba Mobility Master (MM) for use by AirMatch?

- A. GRE
- B. PAPI
- C. SNMP
- D. AMON

Answer: D

NEW QUESTION 171

In the WebUI of an Aruba Mobility Controller (MC), where recommended approach for this process generate a tech support file that the Aruba Technical Support team can use to help customers?

- A. Diagnostics> Technical Support> System Information
- B. Maintenance> Copy logs> download logs
- C. Configuration> System> Logging
- D. Diagnostics> Technical Support> Copy Logs

Answer: A

Explanation:

References:

Generating a crash Dump: Diagnostics> Technical Support> Copy Crash Files
 Generating a tech support file: Diagnostics> Technical Support> System Information

NEW QUESTION 176

.....

THANKS FOR TRYING THE DEMO OF OUR PRODUCT

Visit Our Site to Purchase the Full Set of Actual HPE6-A71 Exam Questions With Answers.

We Also Provide Practice Exam Software That Simulates Real Exam Environment And Has Many Self-Assessment Features. Order the HPE6-A71 Product From:

<https://www.2passeasy.com/dumps/HPE6-A71/>

Money Back Guarantee

HPE6-A71 Practice Exam Features:

- * HPE6-A71 Questions and Answers Updated Frequently
- * HPE6-A71 Practice Questions Verified by Expert Senior Certified Staff
- * HPE6-A71 Most Realistic Questions that Guarantee you a Pass on Your FirstTry
- * HPE6-A71 Practice Test Questions in Multiple Choice Formats and Updatesfor 1 Year