



# CheckPoint

## Exam Questions 156-315.81

Check Point Certified Security Expert R81

## About ExamBible

### *Your Partner of IT Exam*

## Found in 1998

ExamBible is a company specialized on providing high quality IT exam practice study materials, especially Cisco CCNA, CCDA, CCNP, CCIE, Checkpoint CCSE, CompTIA A+, Network+ certification practice exams and so on. We guarantee that the candidates will not only pass any IT exam at the first attempt but also get profound understanding about the certificates they have got. There are so many alike companies in this industry, however, ExamBible has its unique advantages that other companies could not achieve.

## Our Advances

### \* 99.9% Uptime

All examinations will be up to date.

### \* 24/7 Quality Support

We will provide service round the clock.

### \* 100% Pass Rate

Our guarantee that you will pass the exam.

### \* Unique Gurantee

If you do not pass the exam at the first time, we will not only arrange FULL REFUND for you, but also provide you another exam of your claim, ABSOLUTELY FREE!

#### NEW QUESTION 1

- (Exam Topic 1)

Which of the SecureXL templates are enabled by default on Security Gateway?

- A. Accept
- B. Drop
- C. NAT
- D. None

**Answer:** D

#### NEW QUESTION 2

- (Exam Topic 1)

SSL Network Extender (SNX) is a thin SSL VPN on-demand client that is installed on the remote user's machine via the web browser. What are the two modes of SNX?

- A. Application and Client Service
- B. Network and Application
- C. Network and Layers
- D. Virtual Adapter and Mobile App

**Answer:** B

#### NEW QUESTION 3

- (Exam Topic 1)

Automatic affinity means that if SecureXL is running, the affinity for each interface is automatically reset every

- A. 15 sec
- B. 60 sec
- C. 5 sec
- D. 30 sec

**Answer:** B

#### NEW QUESTION 4

- (Exam Topic 1)

Which command collects diagnostic data for analyzing customer setup remotely?

- A. cpinfo
- B. migrate export
- C. sysinfo
- D. cpview

**Answer:** A

#### Explanation:

CPInfo is an auto-updatable utility that collects diagnostics data on a customer's machine at the time of execution and uploads it to Check Point servers (it replaces the standalone cp\_uploader utility for uploading files to Check Point servers).

The CPInfo output file allows analyzing customer setups from a remote location. Check Point support engineers can open the CPInfo file in a demo mode, while viewing actual customer Security Policies and Objects. This allows the in-depth analysis of customer's configuration and environment settings.

#### NEW QUESTION 5

- (Exam Topic 1)

In order to get info about assignment (FW, SND) of all CPUs in your SGW, what is the most accurate CLI command?

- A. fw ctl sdstat
- B. fw ctl affinity -l -a -r -v
- C. fw ctl multik stat
- D. cpinfo

**Answer:** B

#### NEW QUESTION 6

- (Exam Topic 1)

The Security Gateway is installed on GAIA R81. The default port for the Web User Interface is \_\_\_\_\_.

- A. TCP 18211
- B. TCP 257
- C. TCP 4433
- D. TCP 443

**Answer:** D

#### NEW QUESTION 7

- (Exam Topic 1)

Fill in the blank: The tool \_\_\_\_\_ generates a R81 Security Gateway configuration report.

- A. infoCP
- B. infoview
- C. cpinfo
- D. fw cpinfo

**Answer:** C

#### NEW QUESTION 8

- (Exam Topic 1)

On R81.10 when configuring Third-Party devices to read the logs using the LEA (Log Export API) the default Log Server uses port:

- A. 18210
- B. 18184
- C. 257
- D. 18191

**Answer:** B

#### NEW QUESTION 9

- (Exam Topic 1)

Full synchronization between cluster members is handled by Firewall Kernel. Which port is used for this?

- A. UDP port 265
- B. TCP port 265
- C. UDP port 256
- D. TCP port 256

**Answer:** D

#### Explanation:

Synchronization works in two modes:

Full Sync transfers all Security Gateway kernel table information from one cluster member to another. It is handled by the fwd daemon using an encrypted TCP connection on port 256.

Delta Sync transfers changes in the kernel tables between cluster members. Delta sync is handled by the Security Gateway kernel using UDP connections on port 8116.

#### NEW QUESTION 10

- (Exam Topic 1)

The Firewall Administrator is required to create 100 new host objects with different IP addresses. What API command can he use in the script to achieve the requirement?

- A. add host name <New HostName> ip-address <ip address>
- B. add hostname <New HostName> ip-address <ip address>
- C. set host name <New HostName> ip-address <ip address>
- D. set hostname <New HostName> ip-address <ip address>

**Answer:** A

#### NEW QUESTION 10

- (Exam Topic 1)

There are 4 ways to use the Management API for creating host object with R81 Management API. Which one is NOT correct?

- A. Using Web Services
- B. Using Mgmt\_cli tool
- C. Using CLISH
- D. Using SmartConsole GUI console
- E. Events are collected with SmartWorkflow from Trouble Ticket systems

**Answer:** E

#### NEW QUESTION 12

- (Exam Topic 1)

Which of the following Check Point processes within the Security Management Server is responsible for the receiving of log records from Security Gateway?

- A. logd
- B. fwd
- C. fwm
- D. cpd

**Answer:** B

#### NEW QUESTION 17

- (Exam Topic 1)

Which statement is NOT TRUE about Delta synchronization?

- A. Using UDP Multicast or Broadcast on port 8161
- B. Using UDP Multicast or Broadcast on port 8116
- C. Quicker than Full sync
- D. Transfers changes in the Kernel tables between cluster members.

**Answer:** A

#### NEW QUESTION 18

- (Exam Topic 1)

Which is the least ideal Synchronization Status for Security Management Server High Availability deployment?

- A. Synchronized
- B. Never been synchronized
- C. Lagging
- D. Collision

**Answer:** D

#### NEW QUESTION 23

- (Exam Topic 1)

Which command shows actual allowed connections in state table?

- A. fw tab -t StateTable
- B. fw tab -t connections
- C. fw tab -t connection
- D. fw tab connections

**Answer:** B

#### NEW QUESTION 24

- (Exam Topic 1)

The Event List within the Event tab contains:

- A. a list of options available for running a query.
- B. the top events, destinations, sources, and users of the query results, either as a chart or in a tallied list.
- C. events generated by a query.
- D. the details of a selected event.

**Answer:** C

#### NEW QUESTION 26

- (Exam Topic 1)

Connections to the Check Point R81 Web API use what protocol?

- A. HTTPS
- B. RPC
- C. VPN
- D. SIC

**Answer:** A

#### NEW QUESTION 29

- (Exam Topic 1)

Which command lists all tables in Gaia?

- A. fw tab -t
- B. fw tab -list
- C. fw-tab -s
- D. fw tab -l

**Answer:** C

#### NEW QUESTION 32

- (Exam Topic 1)

Which of the following type of authentication on Mobile Access can NOT be used as the first authentication method?

- A. Dynamic ID
- B. RADIUS
- C. Username and Password
- D. Certificate

**Answer:** A

#### NEW QUESTION 35

- (Exam Topic 1)

Which of the following authentication methods ARE NOT used for Mobile Access?

- A. RADIUS server
- B. Username and password (internal, LDAP)
- C. SecurID
- D. TACACS+

**Answer:** D

#### NEW QUESTION 36

- (Exam Topic 1)

Which packet info is ignored with Session Rate Acceleration?

- A. source port ranges
- B. source ip
- C. source port
- D. same info from Packet Acceleration is used

**Answer:** B

#### NEW QUESTION 39

- (Exam Topic 1)

What are the attributes that SecureXL will check after the connection is allowed by Security Policy?

- A. Source address, Destination address, Source port, Destination port, Protocol
- B. Source MAC address, Destination MAC address, Source port, Destination port, Protocol
- C. Source address, Destination address, Source port, Destination port
- D. Source address, Destination address, Destination port, Protocol

**Answer:** A

#### NEW QUESTION 41

- (Exam Topic 1)

CPM process stores objects, policies, users, administrators, licenses and management data in a database. The database is:

- A. MySQL
- B. Postgres SQL
- C. MarisDB
- D. SOLR

**Answer:** B

#### NEW QUESTION 44

- (Exam Topic 2)

What is the main difference between Threat Extraction and Threat Emulation?

- A. Threat Emulation never delivers a file and takes more than 3 minutes to complete.
- B. Threat Extraction always delivers a file and takes less than a second to complete.
- C. Threat Emulation never delivers a file that takes less than a second to complete.
- D. Threat Extraction never delivers a file and takes more than 3 minutes to complete.

**Answer:** B

#### NEW QUESTION 45

- (Exam Topic 2)

Which process is available on any management product and on products that require direct GUI access, such as SmartEvent and provides GUI client communications, database manipulation, policy compilation and Management HA synchronization?

- A. cpwd
- B. fwd
- C. cpd
- D. fwm

**Answer:** D

#### Explanation:

Firewall Management (fwm) is available on any management product, including Multi-Domain and on products that require direct GUI access, such as SmartEvent, It provides the following:

- GUI Client communication
- Database manipulation
- Policy Compilation
- Management HA sync

#### NEW QUESTION 46

- (Exam Topic 2)

An administrator would like to troubleshoot why templating is not working for some traffic. How can he determine at which rule templating is disabled?

- A. He can use the fw accel stat command on the gateway.
- B. He can use the fw accel statistics command on the gateway.
- C. He can use the fwaccel stat command on the Security Management Server.
- D. He can use the fwaccel stat command on the gateway

**Answer:** D

#### NEW QUESTION 50

- (Exam Topic 2)

You find one of your cluster gateways showing “Down” when you run the “cphaprob stat” command. You then run the “clusterXL\_admin up” on the down member but unfortunately the member continues to show down. What command do you run to determine the cause?

- A. cphaprob -f register
- B. cphaprob -d -s report
- C. cpstat -f all
- D. cphaprob -a list

**Answer:** D

#### NEW QUESTION 55

- (Exam Topic 2)

Which of the following will NOT affect acceleration?

- A. Connections destined to or originated from the Security gateway
- B. A 5-tuple match
- C. Multicast packets
- D. Connections that have a Handler (ICMP, FTP, H.323, etc.)

**Answer:** B

#### NEW QUESTION 57

- (Exam Topic 2)

What is the protocol and port used for Health Check and State Synchronization in ClusterXL?

- A. CCP and 18190
- B. CCP and 257
- C. CCP and 8116
- D. CPC and 8116

**Answer:** C

#### NEW QUESTION 59

- (Exam Topic 2)

How would you deploy TE250X Check Point appliance just for email traffic and in-line mode without a Check Point Security Gateway?

- A. Install appliance TE250X on SpanPort on LAN switch in MTA mode.
- B. Install appliance TE250X in standalone mode and setup MTA.
- C. You can utilize only Check Point Cloud Services for this scenario.
- D. It is not possible, always Check Point SGW is needed to forward emails to SandBlast appliance.

**Answer:** C

#### NEW QUESTION 61

- (Exam Topic 2)

SandBlast has several functional components that work together to ensure that attacks are prevented in real-time. Which the following is NOT part of the SandBlast component?

- A. Threat Emulation
- B. Mobile Access
- C. Mail Transfer Agent
- D. Threat Cloud

**Answer:** B

#### NEW QUESTION 63

- (Exam Topic 2)

What is a best practice before starting to troubleshoot using the “fw monitor” tool?

- A. Run the command: fw monitor debug on
- B. Clear the connections table
- C. Disable CoreXL
- D. Disable SecureXL

**Answer:** D

#### NEW QUESTION 65

- (Exam Topic 2)

How do Capsule Connect and Capsule Workspace differ?

- A. Capsule Connect provides a Layer3 VP
- B. Capsule Workspace provides a Desktop with usable applications.
- C. Capsule Workspace can provide access to any application.
- D. Capsule Connect provides Business data isolation.
- E. Capsule Connect does not require an installed application at client.

**Answer:** A

#### NEW QUESTION 68

- (Exam Topic 2)

Using Threat Emulation technologies, what is the best way to block .exe and .bat file types?

- A. enable DLP and select.exe and .bat file type
- B. enable .exe & .bat protection in IPS Policy
- C. create FW rule for particular protocol
- D. tecli advanced attributes set prohibited\_file\_types exe.bat

**Answer:** A

#### NEW QUESTION 70

- (Exam Topic 2)

Which of the following is NOT a component of Check Point Capsule?

- A. Capsule Docs
- B. Capsule Cloud
- C. Capsule Enterprise
- D. Capsule Workspace

**Answer:** C

#### NEW QUESTION 74

- (Exam Topic 2)

When simulating a problem on ClusterXL cluster with cphaprob -d STOP -s problem -t 0 register, to initiate a failover on an active cluster member, what command allows you remove the problematic state?

- A. cphaprob -d STOP unregister
- B. cphaprob STOP unregister
- C. cphaprob unregister STOP
- D. cphaprob -d unregister STOP

**Answer:** A

#### Explanation:

esting a failover in a controlled manner using following command;

# cphaprob -d STOP -s problem -t 0 register

This will register a problem state on the cluster member this was entered on; If you then run;

# cphaprob list

this will show an entry named STOP.

to remove this problematic register run following;

# cphaprob -d STOP unregister

#### NEW QUESTION 76

- (Exam Topic 2)

The Correlation Unit performs all but the following actions:

- A. Marks logs that individually are not events, but may be part of a larger pattern to be identified later.
- B. Generates an event based on the Event policy.
- C. Assigns a severity level to the event.
- D. Takes a new log entry that is part of a group of items that together make up an event, and adds it to an ongoing event.

**Answer:** C

#### NEW QUESTION 79

- (Exam Topic 2)

What processes does CPM control?

- A. Object-Store, Database changes, CPM Process and web-services
- B. web-services, CPML process, DLEserver, CPM process
- C. DLEServer, Object-Store, CP Process and database changes
- D. web\_services, dle\_server and object\_Store

**Answer:** D

#### NEW QUESTION 83



- (Exam Topic 2)

What are the main stages of a policy installations?

- A. Verification & Compilation, Transfer and Commit
- B. Verification & Compilation, Transfer and Installation
- C. Verification, Commit, Installation
- D. Verification, Compilation & Transfer, Installation

**Answer:** A

#### NEW QUESTION 88

- (Exam Topic 2)

From SecureXL perspective, what are the tree paths of traffic flow:

- A. Initial Path; Medium Path; Accelerated Path
- B. Layer Path; Blade Path; Rule Path
- C. Firewall Path; Accept Path; Drop Path
- D. Firewall Path; Accelerated Path; Medium Path

**Answer:** D

#### NEW QUESTION 93

- (Exam Topic 2)

Which one of the following is true about Capsule Connect?

- A. It is a full layer 3 VPN client
- B. It offers full enterprise mobility management
- C. It is supported only on iOS phones and Windows PCs
- D. It does not support all VPN authentication methods

**Answer:** A

#### NEW QUESTION 98

- (Exam Topic 2)

Traffic from source 192.168.1.1 is going to www.google.com. The Application Control Blade on the gateway is inspecting the traffic. Assuming acceleration is enabled which path is handling the traffic?

- A. Slow Path
- B. Medium Path
- C. Fast Path
- D. Accelerated Path

**Answer:** A

#### NEW QUESTION 102

- (Exam Topic 2)

What is the most recommended way to install patches and hotfixes?

- A. CPUSE Check Point Update Service Engine
- B. rpm -Uv
- C. Software Update Service
- D. UnixinstallScript

**Answer:** A

#### NEW QUESTION 104

- (Exam Topic 2)

What is the command to check the status of the SmartEvent Correlation Unit?

- A. fw ctl get int cpsead\_stat
- B. cpstat cpsead
- C. fw ctl stat cpsemd
- D. cp\_conf get\_stat cpsemd

**Answer:** B

#### NEW QUESTION 108

- (Exam Topic 2)

Which statement is true about ClusterXL?

- A. Supports Dynamic Routing (Unicast and Multicast)
- B. Supports Dynamic Routing (Unicast Only)
- C. Supports Dynamic Routing (Multicast Only)
- D. Does not support Dynamic Routing

**Answer:** A

#### NEW QUESTION 109

- (Exam Topic 2)

John detected high load on sync interface. Which is most recommended solution?

- A. For short connections like http service – delay sync for 2 seconds
- B. Add a second interface to handle sync traffic
- C. For short connections like http service – do not sync
- D. For short connections like icmp service – delay sync for 2 seconds

**Answer:** A

#### NEW QUESTION 112

- (Exam Topic 2)

In SmartEvent, what are the different types of automatic reactions that the administrator can configure?

- A. Mail, Block Source, Block Event Activity, External Script, SNMP Trap
- B. Mail, Block Source, Block Destination, Block Services, SNMP Trap
- C. Mail, Block Source, Block Destination, External Script, SNMP Trap
- D. Mail, Block Source, Block Event Activity, Packet Capture, SNMP Trap

**Answer:** A

#### NEW QUESTION 114

- (Exam Topic 2)

When installing a dedicated R81 SmartEvent server. What is the recommended size of the root partition?

- A. Any size
- B. Less than 20GB
- C. More than 10GB and less than 20GB
- D. At least 20GB

**Answer:** D

#### NEW QUESTION 115

- (Exam Topic 2)

Which web services protocol is used to communicate to the Check Point R81 Identity Awareness Web API?

- A. SOAP
- B. REST
- C. XLANG
- D. XML-RPC

**Answer:** B

#### Explanation:

The Identity Web API uses the REST protocol over SSL. The requests and responses are HTTP and in JSON format.

#### NEW QUESTION 118

- (Exam Topic 2)

What is the benefit of “tw monitor” over “tcpdump”?

- A. “fw monitor” reveals Layer 2 information, while “tcpdump” acts at Layer 3.
- B. “fw monitor” is also available for 64-Bit operating systems.
- C. With “fw monitor”, you can see the inspection points, which cannot be seen in “tcpdump”
- D. “fw monitor” can be used from the CLI of the Management Server to collect information from multiple gateways.

**Answer:** C

#### NEW QUESTION 123

- (Exam Topic 2)

Which Check Point software blades could be enforced under Threat Prevention profile using Check Point R81.10 SmartConsole application?

- A. IPS, Anti-Bot, URL Filtering, Application Control, Threat Emulation.
- B. Firewall, IPS, Threat Emulation, Application Control.
- C. IPS, Anti-Bot, Anti-Virus, Threat Emulation, Threat Extraction.
- D. Firewall, IPS, Anti-Bot, Anti-Virus, Threat Emulation.

**Answer:** C

#### NEW QUESTION 126

- (Exam Topic 2)

How do you enable virtual mac (VMAC) on-the-fly on a cluster member?

- A. cphaprob set int fwha\_vmac\_global\_param\_enabled 1
- B. clusterXL set int fwha\_vmac\_global\_param\_enabled 1
- C. fw ctl set int fwha\_vmac\_global\_param\_enabled 1

D. cphaconf set int fwha\_vmac\_global\_param\_enabled 1

**Answer:** C

#### NEW QUESTION 130

- (Exam Topic 2)

To accelerate the rate of connection establishment, SecureXL groups all connection that match a particular service and whose sole differentiating element is the source port. The type of grouping enables even the very first packets of a TCP handshake to be accelerated. The first packets of the first connection on the same service will be forwarded to the Firewall kernel which will then create a template of the connection. Which of the these is NOT a SecureXL template?

- A. Accept Template
- B. Deny Template
- C. Drop Template
- D. NAT Template

**Answer:** B

#### NEW QUESTION 133

- (Exam Topic 2)

The following command is used to verify the CPUSE version:

- A. HostName:0>show installer status build
- B. [Expert@HostName:0]#show installer status
- C. [Expert@HostName:0]#show installer status build
- D. HostName:0>show installer build

**Answer:** A

#### NEW QUESTION 138

- (Exam Topic 3)

Which SmartConsole tab is used to monitor network and security performance?

- A. Manage Setting
- B. Security Policies
- C. Gateway and Servers
- D. Logs and Monitor

**Answer:** D

#### NEW QUESTION 139

- (Exam Topic 3)

How many policy layers do Access Control policy support?

- A. 2
- B. 4
- C. 1
- D. 3

**Answer:** A

#### Explanation:

Two policy layers:

- Network Policy Layer
- Application Control Policy Layer

#### NEW QUESTION 144

- (Exam Topic 3)

To ensure that VMAC mode is enabled, which CLI command should you run on all cluster members?

- A. fw ctl set int fwha vmac global param enabled
- B. fw ctl get int vmac global param enabled; result of command should return value 1
- C. cphaprob-a if
- D. fw ctl get int fwha\_vmac\_global\_param\_enabled; result of command should return value 1

**Answer:** D

#### NEW QUESTION 146

- (Exam Topic 3)

Which of the following is NOT an option to calculate the traffic direction?

- A. Incoming
- B. Internal
- C. External
- D. Outgoing

**Answer:** D

#### NEW QUESTION 147

- (Exam Topic 3)

Capsule Connect and Capsule Workspace both offer secured connection for remote users who are using their mobile devices. However, there are differences between the two.

Which of the following statements correctly identify each product's capabilities?

- A. Workspace supports ios operating system, Android, and WP8, whereas Connect supports ios operating system and Android only
- B. For compliance/host checking, Workspace offers the MDM cooperative enforcement, whereas Connect offers both jailbreak/root detection and MDM cooperative enforcement.
- C. For credential protection, Connect uses One-time Password login support and has no SSO support, whereas Workspace offers both One-Time Password and certain SSO login support.
- D. Workspace can support any application, whereas Connect has a limited number of application types which it will support.

**Answer:** C

#### NEW QUESTION 148

- (Exam Topic 3)

Fill in the blank. Once a certificate is revoked from the Security Gateway by the Security Management Server, the certificate information is \_\_\_\_\_ .

- A. Sent to the Internal Certificate Authority.
- B. Sent to the Security Administrator.
- C. Stored on the Security Management Server.
- D. Stored on the Certificate Revocation List.

**Answer:** D

#### NEW QUESTION 150

- (Exam Topic 3)

In which formats can Threat Emulation forensics reports be viewed in?

- A. TXT, XML and CSV
- B. PDF and TXT
- C. PDF, HTML, and XML
- D. PDF and HTML

**Answer:** C

#### NEW QUESTION 152

- (Exam Topic 3)

Office mode means that:

- A. SecurID client assigns a routable MAC address
- B. After the user authenticates for a tunnel, the VPN gateway assigns a routable IP address to the remote client.
- C. Users authenticate with an Internet browser and use secure HTTPS connection.
- D. Local ISP (Internet service Provider) assigns a non-routable IP address to the remote user.
- E. Allows a security gateway to assign a remote client an IP address
- F. After the user authenticates for a tunnel, the VPN gateway assigns a routable IP address to the remote client.

**Answer:** D

#### NEW QUESTION 155

- (Exam Topic 3)

What command lists all interfaces using Multi-Queue?

- A. cpmq get
- B. show interface all
- C. cpmq set
- D. show multiqueue all

**Answer:** A

#### NEW QUESTION 158

- (Exam Topic 3)

What kind of information would you expect to see using the sim affinity command?

- A. The VMACs used in a Security Gateway cluster
- B. The involved firewall kernel modules in inbound and outbound packet chain
- C. Overview over SecureXL templated connections
- D. Network interfaces and core distribution used for CoreXL

**Answer:** D

#### NEW QUESTION 161

- (Exam Topic 3)

What is UserCheck?

- A. Messaging tool used to verify a user's credentials.
- B. Communication tool used to inform a user about a website or application they are trying to access.
- C. Administrator tool used to monitor users on their network.
- D. Communication tool used to notify an administrator when a new user is created.

**Answer:** B

#### NEW QUESTION 162

- (Exam Topic 3)

Which tool provides a list of trusted files to the administrator so they can specify to the Threat Prevention blade that these files do not need to be scanned or analyzed?

- A. ThreatWiki
- B. Whitelist Files
- C. AppWiki
- D. IPS Protections

**Answer:** B

#### NEW QUESTION 163

- (Exam Topic 3)

After trust has been established between the Check Point components, what is TRUE about name and IP-address changes?

- A. Security Gateway IP-address cannot be changed without re-establishing the trust.
- B. The Security Gateway name cannot be changed in command line without re-establishing trust.
- C. The Security Management Server name cannot be changed in SmartConsole without re-establishing trust.
- D. The Security Management Server IP-address cannot be changed without re-establishing the trust.

**Answer:** A

#### NEW QUESTION 168

- (Exam Topic 3)

Which application should you use to install a contract file?

- A. SmartView Monitor
- B. WebUI
- C. SmartUpdate
- D. SmartProvisioning

**Answer:** C

#### NEW QUESTION 170

- (Exam Topic 3)

You want to verify if your management server is ready to upgrade to R81.10. What tool could you use in this process?

- A. migrate export
- B. upgrade\_tools verify
- C. pre\_upgrade\_verifier
- D. migrate import

**Answer:** C

#### NEW QUESTION 175

- (Exam Topic 3)

The system administrator of a company is trying to find out why acceleration is not working for the traffic. The traffic is allowed according to the rule base and checked for viruses. But it is not accelerated.

What is the most likely reason that the traffic is not accelerated?

- A. There is a virus found
- B. Traffic is still allowed but not accelerated.
- C. The connection required a Security server.
- D. Acceleration is not enabled.
- E. The traffic is originating from the gateway itself.

**Answer:** B

#### NEW QUESTION 177

- (Exam Topic 3)

Ken wants to obtain a configuration lock from other administrator on R81 Security Management Server. He can do this via WebUI or via CLI.

Which command should he use in CLI? (Choose the correct answer.)

- A. remove database lock
- B. The database feature has one command lock database override.
- C. override database lock
- D. The database feature has two commands lock database override and unlock databases
- E. Both will work.

**Answer:** D

#### NEW QUESTION 181

- (Exam Topic 3)

What is the recommended number of physical network interfaces in a Mobile Access cluster deployment?

- A. 4 Interfaces – an interface leading to the organization, a second interface leading to the internet, a third interface for synchronization, a fourth interface leading to the Security Management Server.
- B. 3 Interfaces – an interface leading to the organization, a second interface leading to the Internet, a third interface for synchronization.
- C. 1 Interface – an interface leading to the organization and the Internet, and configure for synchronization.
- D. 2 Interfaces – a data interface leading to the organization and the Internet, a second interface for synchronization.

**Answer:** B

#### NEW QUESTION 186

- (Exam Topic 3)

What is the most ideal Synchronization Status for Security Management Server High Availability deployment?

- A. Lagging
- B. Synchronized
- C. Never been synchronized
- D. Collision

**Answer:** B

#### NEW QUESTION 187

- (Exam Topic 3)

Which is NOT an example of a Check Point API?

- A. Gateway API
- B. Management API
- C. OPSEC SDK
- D. Threat Prevention API

**Answer:** A

#### NEW QUESTION 190

- (Exam Topic 3)

You notice that your firewall is under a DDoS attack and would like to enable the Penalty Box feature, which command you use?

- A. `sim erdos -e 1`
- B. `sim erdos -m 1`
- C. `sim erdos -v 1`
- D. `sim erdos -x 1`

**Answer:** A

#### NEW QUESTION 193

- (Exam Topic 4)

What are the minimum open server hardware requirements for a Security Management Server/Standalone in R81?

- A. 2 CPU cores, 4GB of RAM and 15GB of disk space
- B. 8 CPU cores, 16GB of RAM and 500 GB of disk space
- C. 4 CPU cores, 8GB of RAM and 500GB of disk space
- D. 8 CPU cores, 32GB of RAM and 1 TB of disk space

**Answer:** C

#### NEW QUESTION 195

- (Exam Topic 4)

D18912E1457D5D1DDCBD40AB3BF70D5D

The system administrator of a company is trying to find out why acceleration is not working for the traffic. The traffic is allowed according to the rule based and checked for viruses. But it is not accelerated. What is the most likely reason that the traffic is not accelerated?

- A. The connection is destined for a server within the network
- B. The connection required a Security server
- C. The packet is the second in an established TCP connection
- D. The packets are not multicast

**Answer:** B

#### NEW QUESTION 200

- (Exam Topic 4)

Which of the following Check Point commands is true to enable Multi-Version Cluster (MVC)?



- A. Check Point Security Management HA (Secondary): set cluster member mvc on
- B. Check Point Security Gateway Only: set cluster member mvc on
- C. Check Point Security Management HA (Primary): set cluster member mvc on
- D. Check Point Security Gateway Cluster Member: set cluster member mvc on

**Answer:** D

#### NEW QUESTION 205

- (Exam Topic 4)

How does the Anti-Virus feature of the Threat Prevention policy block traffic from infected websites?

- A. By dropping traffic from websites identified through ThreatCloud Verification and URL Caching
- B. By dropping traffic that is not proven to be from clean websites in the URL Filtering blade
- C. By allowing traffic from websites that are known to run Antivirus Software on servers regularly
- D. By matching logs against ThreatCloud information about the reputation of the website

**Answer:** D

#### NEW QUESTION 209

- (Exam Topic 4)

Vanessa is expecting a very important Security Report. The Document should be sent as an attachment via e-mail. An e-mail with Security\_report.pdf file was delivered to her e-mail inbox. When she opened the PDF file, she noticed that the file is basically empty and only few lines of text are in it. The report is missing some graphs, tables and links. Which component of SandBlast protection is her company using on a Gateway?

- A. SandBlast Threat Emulation
- B. SandBlast Agent
- C. Check Point Protect
- D. SandBlast Threat Extraction

**Answer:** D

#### NEW QUESTION 212

- (Exam Topic 4)

What are the services used for Cluster Synchronization?

- A. 256H-CP for Full Sync and 8116/UDP for Delta Sync
- B. 8116/UDP for Full Sync and Delta Sync
- C. TCP/256 for Full Sync and Delta Sync
- D. No service needed when using Broadcast Mode

**Answer:** C

#### NEW QUESTION 213

- (Exam Topic 4)

Fill in the blank: A \_\_\_\_\_ VPN deployment is used to provide remote users with secure access to internal corporate resources by authenticating the user through an internet browser.

- A. Clientless remote access
- B. Clientless direct access
- C. Client-based remote access
- D. Direct access

**Answer:** A

#### NEW QUESTION 214

- (Exam Topic 4)

How long may verification of one file take for Sandblast Threat Emulation?

- A. up to 1 minutes
- B. within seconds cleaned file will be provided
- C. up to 5 minutes
- D. up to 3 minutes

**Answer:** B

#### NEW QUESTION 219

- (Exam Topic 4)

Alice & Bob are concurrently logged In via SSH on the same Check Point Security Gateway as user "admin" however Bob was first logged in and acquired the lock Alice is not aware that Bob is also logged in to the same Security Management Server as she is but she needs to perform very urgent configuration changes - which of the following GAIAClish command is true for overriding Bobs configuration database lock:

- A. lock database override
- B. unlock override database
- C. unlock database override
- D. database unlock override

**Answer:** A

#### NEW QUESTION 223

- (Exam Topic 4)

Choose the correct syntax to add a new host named “emailserver1” with IP address 10.50.23.90 using GAIa Management CLI?

- A. mgmt\_cli add host name “myHost12 ip” address 10.50.23.90
- B. mgmt\_cli add host name ip-address 10.50.23.90
- C. mgmt\_cli add host “emailserver1” address 10.50.23.90
- D. mgmt\_cli add host name “emailserver1” ip-address 10.50.23.90

**Answer:** D

#### Explanation:

Reference: <https://weekly-geekly.github.io/articles/339924/index.html>

#### NEW QUESTION 225

- (Exam Topic 4)

Bob needs to know if Alice was configuring the new virtual cluster interface correctly. Which of the following Check Point commands is true?

- A. cphaprob-aif
- B. cp hap rob state
- C. cphaprob list
- D. probcpha -a if

**Answer:** A

#### NEW QUESTION 228

- (Exam Topic 4)

In Threat Prevention, you can create new or clone profiles but you CANNOT change the out-of-the-box profiles of:

- A. Basic, Optimized, Strict
- B. Basic, Optimized, Severe
- C. General, Escalation, Severe
- D. General, purposed, Strict

**Answer:** A

#### NEW QUESTION 229

- (Exam Topic 4)

Which Queue in the Priority Queue has the maximum priority?

- A. High Priority
- B. Control
- C. Routing
- D. Heavy Data Queue

**Answer:** C

#### NEW QUESTION 233

- (Exam Topic 4)

Which of the following is an identity acquisition method that allows a Security Gateway to identify Active Directory users and computers?

- A. UserCheck
- B. Active Directory Query
- C. Account Unit Query
- D. User Directory Query

**Answer:** B

#### Explanation:

Reference : [https://sc1.checkpoint.com/documents/R76/CP\\_R76\\_IdentityAwareness\\_AdminGuide/62402.htm](https://sc1.checkpoint.com/documents/R76/CP_R76_IdentityAwareness_AdminGuide/62402.htm)

#### NEW QUESTION 236

- (Exam Topic 4)

Due to high CPU workload on the Security Gateway, the security administrator decided to purchase a new CPU to replace the existing single core CPU. After installation, is the administrator required to perform any additional tasks?

- A. Go to clash-Run cpstop | Run cpstart
- B. Go to clash-Run cpconfig | Configure CoreXL to make use of the additional Cores | Exit cpconfig | Reboot Security Gateway
- C. Administrator does not need to perform any tas
- D. Check Point will make use of the newly installed CPU and Cores
- E. Go to clash-Run cpconfig | Configure CoreXL to make use of the additional Cores | Exit cpconfig | Reboot Security Gateway | Install Security Policy

**Answer:** B



#### NEW QUESTION 238

- (Exam Topic 4)

What solution is Multi-queue intended to provide?

- A. Improve the efficiency of traffic handling by SecureXL SNDs
- B. Reduce the confusion for traffic capturing in FW Monitor
- C. Improve the efficiency of CoreXL Kernel Instances
- D. Reduce the performance of network interfaces

**Answer: C**

#### NEW QUESTION 240

- (Exam Topic 4)

Can Check Point and Third-party Gateways establish a certificate-based Site-to-Site VPN tunnel?

- A. Yes, but they need to have a mutually trusted certificate authority
- B. Yes, but they have to have a pre-shared secret key
- C. No, they cannot share certificate authorities
- D. No, Certificate based VPNs are only possible between Check Point devices

**Answer: A**

#### NEW QUESTION 242

- (Exam Topic 4)

There are two R77.30 Security Gateways in the Firewall Cluster. They are named FW\_A and FW\_B. The cluster is configured to work as HA (High availability) with default cluster configuration. FW\_A is configured to have higher priority than FW\_B. FW\_A was active and processing the traffic in the morning. FW\_B was standby. Around 1100 am, its interfaces went down and this caused a failover. FW\_B became active. After an hour, FW\_A's interface issues were resolved and it became operational.

When it re-joins the cluster, will it become active automatically?

- A. No, since 'maintain' current active cluster member' option on the cluster object properties is enabled by default.
- B. No, since 'maintain' current active cluster member' option is enabled by default on the Global Properties.
- C. Yes, since 'Switch to higher priority cluster member' option on the cluster object properties is enabled by default.
- D. Yes, since 'Switch to higher priority cluster member' option is enabled by default on the Global Properties.

**Answer: A**

#### NEW QUESTION 243

- (Exam Topic 4)

An administrator is creating an IPsec site-to-site VPN between his corporate office and branch office. Both offices are protected by Check Point Security Gateway managed by the same Security Management Server. While configuring the VPN community to specify the pre-shared secret the administrator found that the check box to enable pre-shared secret and cannot be enabled. Why does it not allow him to specify the pre-shared secret?

- A. IPsec VPN blade should be enabled on both Security Gateway.
- B. Pre-shared can only be used while creating a VPN between a third party vendor and Check Point Security Gateway.
- C. Certificate based Authentication is the only authentication method available between two Security Gateway managed by the same SMS.
- D. The Security Gateways are pre-R75.40.

**Answer: C**

#### NEW QUESTION 246

- (Exam Topic 4)

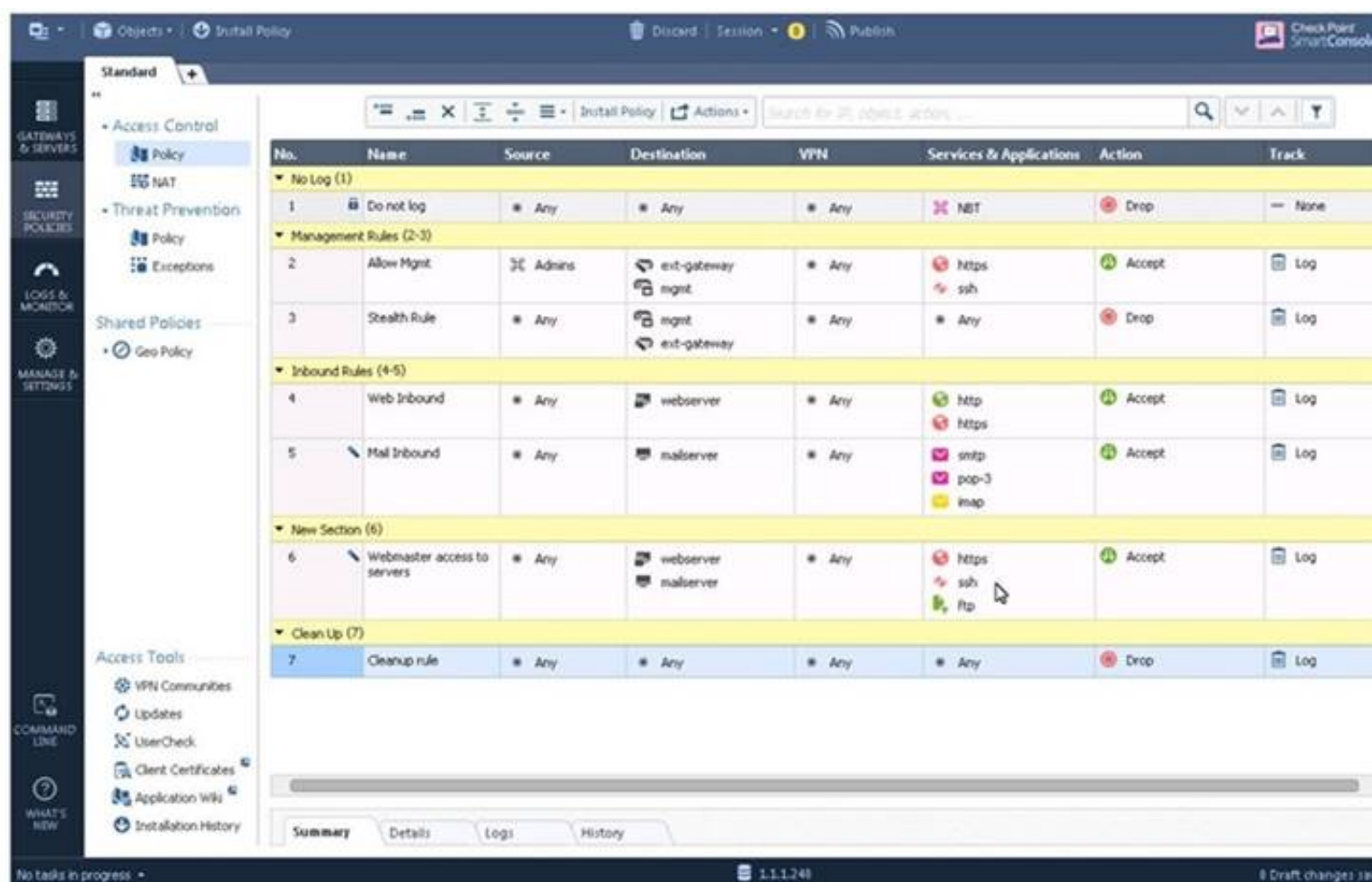
How many versions, besides the destination version, are supported in a Multi-Version Cluster Upgrade?

- A. 1
- B. 3
- C. 2
- D. 4

**Answer: B**

#### NEW QUESTION 248

- (Exam Topic 4)



No.	Name	Source	Destination	VPN	Services & Applications	Action	Track
No Log (1)							
1	Do not log	* Any	* Any	* Any	NBT	Drop	None
Management Rules (2-3)							
2	Allow Mgmt	Admins	ext-gateway mgmt	* Any	https ssh	Accept	Log
3	Stealth Rule	* Any	mgmt ext-gateway	* Any	* Any	Drop	Log
Inbound Rules (4-5)							
4	Web Inbound	* Any	webserver	* Any	http https	Accept	Log
5	Mail Inbound	* Any	mailserver	* Any	smtp pop-3 imap	Accept	Log
New Section (6)							
6	Webmaster access to servers	* Any	webserver mailserver	* Any	https ssh ftp	Accept	Log
Clean Up (7)							
7	Cleanup rule	* Any	* Any	* Any	* Any	Drop	Log

What can we infer about the recent changes made to the Rule Base?

- A. Rule 7 was created by the 'admin' administrator in the current session
- B. 8 changes have been made by administrators since the last policy installation
- C. The rules 1, 5 and 6 cannot be edited by the 'admin' administrator
- D. Rule 1 and object webserver are locked by another administrator

**Answer: D**

#### NEW QUESTION 249

- (Exam Topic 4)

SecureXL is able to accelerate the Connection Rate using templates. Which attributes are used in the template to identify the connection?

- A. Source address . Destination address
- B. Source Port, Destination port
- C. Source address . Destination address
- D. Destination port
- E. Source address . Destination address
- F. Destination port
- G. Protocol
- H. Source address . Destination address
- I. Source Port, Destination port
- J. Protocol

**Answer: D**

#### NEW QUESTION 252

- (Exam Topic 4)

No.	Name	Source	Destination	VPN	Services & Applications	Action	Track	Install On
1	NetSOS Noise	* Any	* Any	* Any	NBT	Drop	None	* Policy Targets
2	Management	Net_10.28.0.0	GW-R7730	* Any	https ssh	Accept	Log	* Policy Targets
3	Stealth	* Any	GW-R7730	* Any	* Any	Drop	Log	* Policy Targets
4	DNS	Net_10.28.0.0	* Any	* Any	dns	Accept	Log	* Policy Targets
5	Web	Net_10.28.0.0	* Any	* Any	http https	Accept	Log	* Policy Targets
6	DMZ Access	Net_10.28.0.0	DMZ_Net_192.0.2.0	* Any	ftp AP-Defender	Accept	Log	* Policy Targets
7	Cleanup rule	* Any	* Any	* Any	* Any	Drop	Log	* Policy Targets

You are the administrator for ABC Corp. You have logged into your R81 Management server. You are making some changes in the Rule Base and notice that rule No.6 has a pencil icon next to it.

What does this mean?

- A. This rule N
- B. 6 has been marked for deletion in your Management session.
- C. This rule N
- D. 6 has been marked for deletion in another Management session.
- E. This rule N
- F. 6 has been marked for editing in your Management session.
- G. This rule N
- H. 6 has been marked for editing in another Management session.

**Answer:**

C

#### NEW QUESTION 255

- (Exam Topic 4)

In the R81 SmartConsole, on which tab are Permissions and Administrators defined?

- A. Security Policies
- B. Logs and Monitor
- C. Manage and Settings
- D. Gateways and Servers

**Answer: C**

#### NEW QUESTION 257

- (Exam Topic 4)

Due to high CPU workload on the Security Gateway, the security administrator decided to purchase a new multicore CPU to replace the existing single core CPU. After installation, is the administrator required to perform any additional tasks?

- A. After upgrading the hardware, increase the number of kernel instances using cpconfig
- B. Hyperthreading must be enabled in the bios to use CoreXL
- C. Run cprestart from dish
- D. Administrator does not need to perform any tas
- E. Check Point will make use of the newly installed CPU and Cores.

**Answer: A**

#### Explanation:

[https://sc1.checkpoint.com/documents/R80.40/WebAdminGuides/EN/CP\\_R80.40\\_PerformanceTuning\\_AdminG](https://sc1.checkpoint.com/documents/R80.40/WebAdminGuides/EN/CP_R80.40_PerformanceTuning_AdminG) R81

[https://sc1.checkpoint.com/documents/R81/WebAdminGuides/EN/CP\\_R81\\_PerformanceTuning\\_AdminGuide/](https://sc1.checkpoint.com/documents/R81/WebAdminGuides/EN/CP_R81_PerformanceTuning_AdminGuide/) cpconfig -> Enter the number of the Check Point CoreXL option. ( Enter 1 to select Change the number of firewall instances. OR Enter 2 for the option Change the number of IPv6 firewall instances.) -> Enter the total number of IPv4 (IPv6) CoreXL Firewall instances you wish the Security Gateway to run. Follow the instructions on the screen. -> Exit from the cpconfig menu.  
- Reboot the Security Gateway.

#### NEW QUESTION 261

- (Exam Topic 4)

Which command is used to obtain the configuration lock in Gaia?

- A. Lock database override
- B. Unlock database override
- C. Unlock database lock
- D. Lock database user

**Answer: A**

#### Explanation:

Obtaining a Configuration Lock

#### NEW QUESTION 262

- (Exam Topic 4)

John is using Management HA. Which Security Management Server should he use for making changes?

- A. secondary Smartcenter
- B. active SmartConsole
- C. connect virtual IP of Smartcenter HA
- D. primary Log Server

**Answer: B**

#### NEW QUESTION 265

- (Exam Topic 4)

What is the recommended configuration when the customer requires SmartLog indexing for 14 days and SmartEvent to keep events for 180 days?

- A. Use Multi-Domain Management Server.
- B. Choose different setting for log storage and SmartEvent db
- C. Install Management and SmartEvent on different machines.
- D. it is not possible.

**Answer: C**

#### NEW QUESTION 267

- (Exam Topic 4)

What is the minimum number of CPU cores required to enable CoreXL?

- A. 1
- B. 6
- C. 2
- D. 4

**Answer:** C

**Explanation:**

Default number of CoreXL IPv4 FW instances:

Note: The real number of CoreXL FW instances depends on the current CoreXL license. Number of CPU cores Default number of CoreXL IPv4

FW instances Default number of Secure Network Distributors (SNDs)

1 1

Note: CoreXL is disabled 0 Note: CoreXL is disabled

2 2 2

4 3 1

6 - 20 [Number of CPU cores] - 2 2

More than 20 (1) [Number of CPU cores] - 4 4

**NEW QUESTION 268**

- (Exam Topic 4)

When synchronizing clusters, which of the following statements is FALSE?

- A. The state of connections using resources is maintained in a Security Server, so their connections cannot be synchronized.
- B. Only cluster members running on the same OS platform can be synchronized.
- C. In the case of a failover, accounting information on the failed member may be lost despite a properly working synchronization.
- D. Client Authentication or Session Authentication connections through a cluster member will be lost if the cluster member fails.

**Answer:** D

**NEW QUESTION 269**

- (Exam Topic 4)

By default, the R81 web API uses which content-type in its response?

- A. Java Script
- B. XML
- C. Text
- D. JSON

**Answer:** D

**NEW QUESTION 273**

- (Exam Topic 4)

The Check Point history feature in R81 provides the following:

- A. View install changes and install specific version
- B. View install changes
- C. Policy Installation Date, view install changes and install specific version
- D. Policy Installation Date only

**Answer:** D

**NEW QUESTION 275**

- (Exam Topic 4)

How is communication between different Check Point components secured in R81? As with all questions, select the BEST answer.

- A. By using IPSEC
- B. By using SIC
- C. By using ICA
- D. By using 3DES

**Answer:** B

**NEW QUESTION 279**

- (Exam Topic 4)

What is Dynamic Balancing?

- A. It is a ClusterXL feature that switches an HA cluster into an LS cluster if required to maximize throughput
- B. It is a feature that uses a daemon to balance the required number of firewall instances and SNDs based on the current load
- C. It is a new feature that is capable of dynamically reserve the amount of Hash kernel memory to reflect the resource usage necessary for maximizing the session rate.
- D. It is a CoreXL feature that assigns the SND to network interfaces to balance the RX Cache of the interfaces

**Answer:** B

**NEW QUESTION 281**

- (Exam Topic 4)

Which firewall daemon is responsible for the FW CLI commands?

- A. fwd
- B. fwm
- C. cpm



D. cpd

**Answer:** A

#### NEW QUESTION 286

- (Exam Topic 4)

Which of the following is a task of the CPD process?

- A. Invoke and monitor critical processes and attempts to restart them if they fail
- B. Transfers messages between Firewall processes
- C. Log forwarding
- D. Responsible for processing most traffic on a security gateway

**Answer:** B

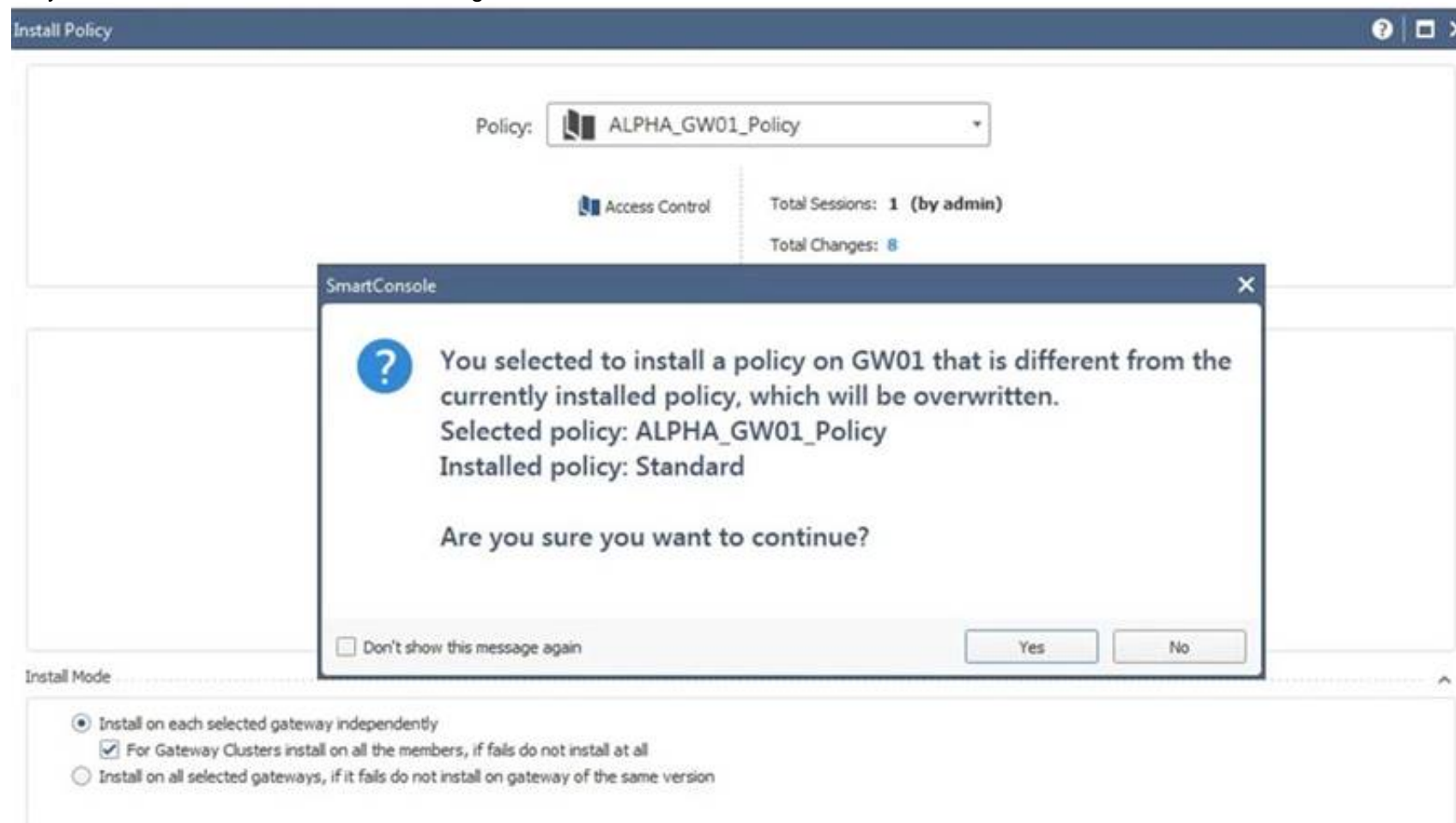
#### Explanation:

[https://sc1.checkpoint.com/documents/R76/CP\\_R76\\_CLI\\_WebAdmin/12496.htm](https://sc1.checkpoint.com/documents/R76/CP_R76_CLI_WebAdmin/12496.htm)

#### NEW QUESTION 289

- (Exam Topic 4)

Why would an administrator see the message below?



- A. A new Policy Package created on both the Management and Gateway will be deleted and must be backed up first before proceeding.
- B. A new Policy Package created on the Management is going to be installed to the existing Gateway.
- C. A new Policy Package created on the Gateway is going to be installed on the existing Management.
- D. A new Policy Package created on the Gateway and transferred to the Management will be overwritten by the Policy Package currently on the Gateway but can be restored from a periodic backup on the Gateway.

**Answer:** B

#### NEW QUESTION 290

- (Exam Topic 4)

You have enabled "Full Log" as a tracking option to a security rule. However, you are still not seeing any data type information. What is the MOST likely reason?

- A. Logging has disk space issue
- B. Change logging storage options on the logging server or Security Management Server properties and install database.
- C. Data Awareness is not enabled.
- D. Identity Awareness is not enabled.
- E. Logs are arriving from Pre-R81 gateways.

**Answer:** A

#### NEW QUESTION 291

- (Exam Topic 4)

How can you switch the active log file?

- A. Run fw logswitch on the gateway
- B. Run fwm logswitch on the Management Server
- C. Run fwm logswitch on the gateway
- D. Run fw logswitch on the Management Server

**Answer:** D

#### NEW QUESTION 293

- (Exam Topic 4)

UserCheck objects in the Application Control and URL Filtering rules allow the gateway to communicate with the users. Which action is not supported in UserCheck objects?

- A. Ask
- B. Drop
- C. Inform
- D. Reject

**Answer:** D

#### NEW QUESTION 298

- (Exam Topic 4)

How can you see historical data with cpview?

- A. cpview -f <timestamp>
- B. cpview -e <timestamp>
- C. cpview -t <timestamp>
- D. cpview -d <timestamp>

**Answer:** C

#### NEW QUESTION 302

- (Exam Topic 4)

What is the recommended way to have a redundant Sync connection between the cluster nodes?

- A. In the SmartConsole / Gateways & Servers -> select Cluster Properties / Network Management and define two Sync interfaces per nod
- B. Connect both Sync interfaces without using a switch.
- C. Use a group of bonded interface
- D. In the SmartConsole / Gateways & Servers -> select Cluster Properties / Network Management and define a Virtual IP for the Sync interface.
- E. In the SmartConsole / Gateways & Servers -> select Cluster Properties / Network Management and define two Sync interfaces per nod
- F. Use two different Switches to connect both Sync interfaces.
- G. Use a group of bonded interfaces connected to different switch
- H. Define a dedicated sync interface, only one interface per node using the SmartConsole / Gateways & Servers -> select Cluster Properties / Network Management.

**Answer:** C

#### NEW QUESTION 303

- (Exam Topic 4)

In terms of Order Rule Enforcement, when a packet arrives at the gateway, the gateway checks it against the rules in the top Policy Layer, sequentially from top to bottom Which of the following statements is correct?

- A. If the Action of the matching rule is Accept the gateway will drop the packet
- B. If the Action of the matching rule is Drop, the gateway continues to check rules in the next Policy Layer down
- C. If the Action of the matching rule is Drop the gateway stops matching against later rules in the Policy Rule Base and drops the packet
- D. If the rule does not matched in the Network policy it will continue to other enabled polices

**Answer:** C

#### Explanation:

[https://sc1.checkpoint.com/documents/R81/CP\\_R81\\_SecMGMT/html\\_frameset.htm?topic=documents/R81/CP\\_](https://sc1.checkpoint.com/documents/R81/CP_R81_SecMGMT/html_frameset.htm?topic=documents/R81/CP_)

#### NEW QUESTION 304

- (Exam Topic 4)

IF the first packet of an UDP session is rejected by a rule definition from within a security policy (not including the clean up rule), what message is sent back through the kernel?

- A. Nothing
- B. TCP FIN
- C. TCP RST
- D. ICMP unreachable

**Answer:** A

#### NEW QUESTION 309

- (Exam Topic 4)

At what point is the Internal Certificate Authority (ICA) created?

- A. Upon creation of a certificate.
- B. During the primary Security Management Server installation process.
- C. When an administrator decides to create one.
- D. When an administrator initially logs into SmartConsole.

**Answer:** B

#### NEW QUESTION 314

- (Exam Topic 4)

Which command is used to add users to or from existing roles?

- A. Add rba user <User Name> roles <List>
- B. Add rba user <User Name>
- C. Add user <User Name> roles <List>
- D. Add user <User Name>

**Answer:** A

#### NEW QUESTION 316

- (Exam Topic 4)

To optimize Rule Base efficiency, the most hit rules should be where?

- A. Removed from the Rule Base.
- B. Towards the middle of the Rule Base.
- C. Towards the top of the Rule Base.
- D. Towards the bottom of the Rule Base.

**Answer:** C

#### NEW QUESTION 319

- (Exam Topic 4)

Which Check Point software blade provides protection from zero-day and undiscovered threats?

- A. Firewall
- B. Threat Emulation
- C. Application Control
- D. Threat Extraction

**Answer:** B

#### NEW QUESTION 323

- (Exam Topic 4)

SmartEvent uses it's event policy to identify events. How can this be customized?

- A. By modifying the firewall rulebase
- B. By creating event candidates
- C. By matching logs against exclusions
- D. By matching logs against event rules

**Answer:** D

#### NEW QUESTION 326

- (Exam Topic 4)

In the Check Point Security Management Architecture, which component(s) can store logs?

- A. SmartConsole
- B. Security Management Server and Security Gateway
- C. Security Management Server
- D. SmartConsole and Security Management Server

**Answer:** B

#### NEW QUESTION 329

- (Exam Topic 4)

Fill in the blank: \_\_\_\_\_ information is included in "Full Log" tracking option, but is not included in "Log" tracking option?

- A. Destination port
- B. Data type
- C. File attributes
- D. Application

**Answer:** B

#### NEW QUESTION 330

- (Exam Topic 4)

Which command shows the current Security Gateway Firewall chain?

- A. show current chain
- B. show firewall chain
- C. fw ctl chain

D. fw ctl firewall-chain

**Answer:** C

**NEW QUESTION 334**

.....



## Relate Links

**100% Pass Your 156-315.81 Exam with Exambible Prep Materials**

<https://www.exambible.com/156-315.81-exam/>

## Contact us

We are proud of our high-quality customer service, which serves you around the clock 24/7.

Viste - <https://www.exambible.com/>