



Microsoft

Exam Questions MS-100

Microsoft 365 Identity and Services

NEW QUESTION 1

- (Exam Topic 1)

You company has a Microsoft Azure Active Directory (Azure AD) tenant that contains the users shown in the following table. The tenant includes a security group named Admin1. Admin1 will be used to manage administrative accounts. You need to identify which users can perform the following administrative tasks:

- Create guest user accounts.
- Add User3 to Admin1.

Which users should you identify for each task? To answer, select the appropriate options in the answer area. NOTE: Each correct selection is worth one point.

Create guest user accounts:

User4 only
User2 only
User3 only
User2 and User3 only
User1, User2 and User3 only
User1, User2, User3, and User4

Add User3 to Admin1:

User4 only
User2 only
User3 only
User2 and User3 only
User1, User2 and User3 only
User1, User2, User3, and User4

- A. Mastered
- B. Not Mastered

Answer: A

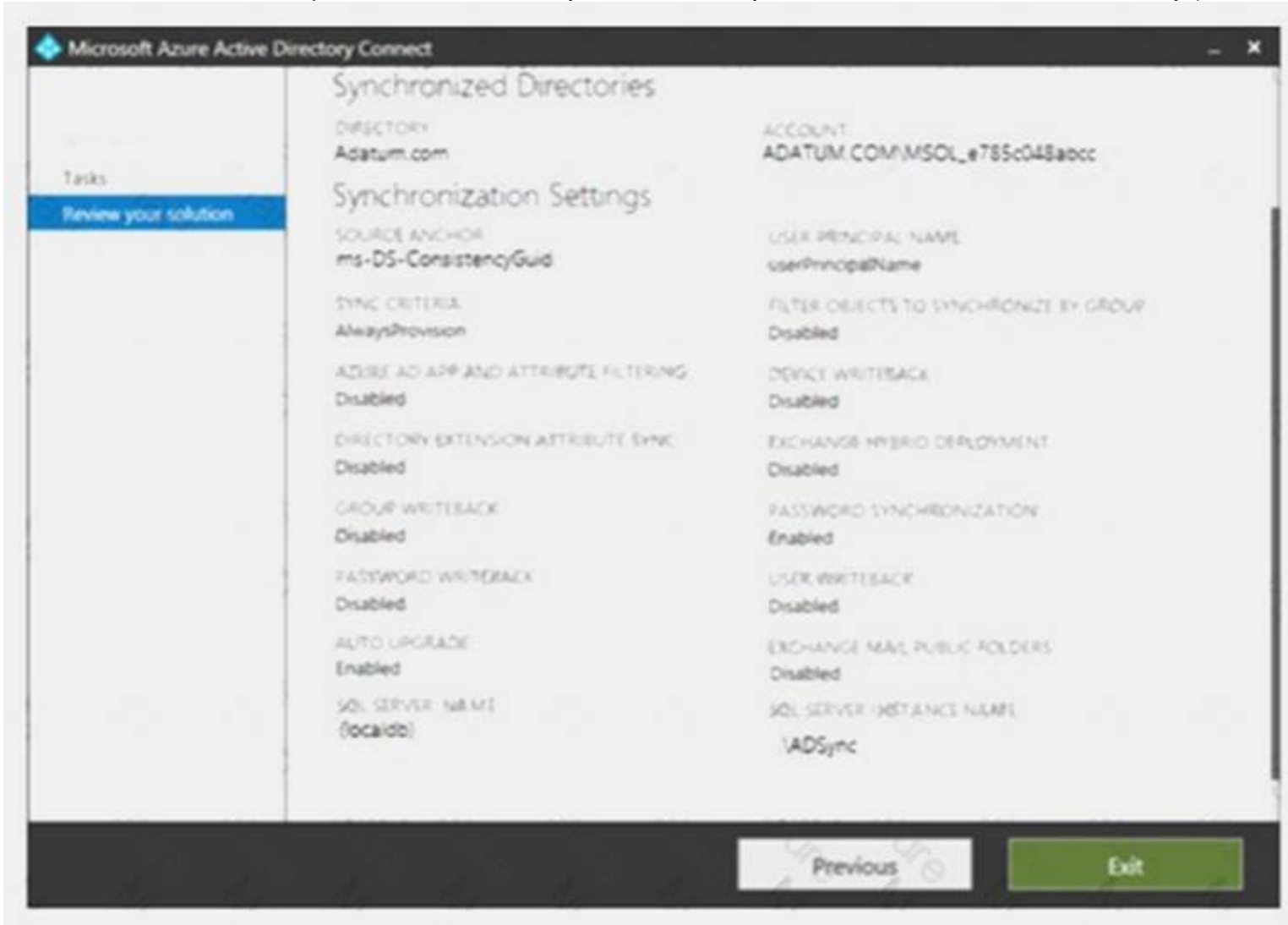
Explanation:

References:
<https://docs.microsoft.com/en-us/azure/active-directory/users-groups-roles/directory-assign-admin-roles>

NEW QUESTION 2

- (Exam Topic 1)

Your network contains an on-premises Active Directory domain that is synced to Microsoft Azure Active Directory (Azure AD) as shown in the following exhibit.



An on-premises Active Directory user account named Allan Yoo is synchronized to Azure AD. You view Allan's account from Microsoft 365 and notice that his username is set to Allan@contoso.onmicrosoft.com.

For each of the following statements, select Yes if the statement is true. Otherwise, select No. NOTE: Each correct selection is worth one point.

Statements	Yes	No
From the Azure portal, you can reset the password of Allan Yoo.	<input type="radio"/>	<input type="radio"/>
From the Azure portal, you can configure the job title of Allan Yoo.	<input type="radio"/>	<input type="radio"/>
From the Azure portal, you can configure the usage location of Allan Yoo.	<input type="radio"/>	<input type="radio"/>

- A. Mastered
 B. Not Mastered

Answer: A

Explanation:

Statements	Yes	No
From the Azure portal, you can reset the password of Allan Yoo.	<input type="radio"/>	<input checked="" type="radio"/>
From the Azure portal, you can configure the job title of Allan Yoo.	<input type="radio"/>	<input checked="" type="radio"/>
From the Azure portal, you can configure the usage location of Allan Yoo.	<input checked="" type="radio"/>	<input type="radio"/>

NEW QUESTION 3

- (Exam Topic 1)

Note: This question is part of a series of questions that present the same scenario. Each question in the series contains a unique solution that might meet the stated goals. Some question sets might have more than one correct solution, while others might not have a correct solution.

After you answer a question in this section, you will NOT be able to return to it. As a result these questions will not appear in the review screen.

Your company has a main office and three branch offices. All the branch offices connect to the main office by using a WAN link. The main office has a high-speed Internet connection. All the branch offices connect to the Internet by using the main office connection.

Users use Microsoft Outlook 2016 to connect to 4 Microsoft Exchange Server mailbox hosted in the main office.

The users report that when the WAN link in their office becomes unavailable, they cannot access their mailbox.

You create a Microsoft 365 subscription, and then migrate all the user data to Microsoft 365.

You need to ensure that all the users can continue to use Outlook to receive email messages if a WAN link fails.

Solution: You deploy a site-to-site VPN from each branch office to Microsoft Azure. Does this meet the goal?

- A. Yes
 B. NO

Answer: B

NEW QUESTION 4

- (Exam Topic 1)

Your company has a Microsoft Office 365 subscription that contains the groups shown in the following table.

Name	Members
Group1	User1, User2
Group2	User3

You have the licenses shown in the following table.

License	Included service	Assigned to
Microsoft 365	Microsoft Exchange Online	Group1
Microsoft 365	Microsoft SharePoint Online	User1, User2, User3

Another administrator removes User1 from Group1 and adds Group2 to Group1.

For each of the following statements, select Yes if the statement is true. Otherwise, select No. NOTE: Each correct selection is worth one point.

Statements	Yes	No
User1 is licensed for SharePoint Online.	<input type="radio"/>	<input type="radio"/>
User2 is licensed for SharePoint Online.	<input type="radio"/>	<input type="radio"/>
User3 is licensed for SharePoint Online.	<input type="radio"/>	<input type="radio"/>

- A. Mastered
 B. Not Mastered

Answer: A

Explanation:

The users are assigned SharePoint licenses directly. Their group memberships have no effect on licenses directly assigned to the user accounts.

NEW QUESTION 5

- (Exam Topic 1)

Your network contains an Active Directory forest named local.

You have a Microsoft 365 subscription. You plan to implement a directory synchronization solution that will use password hash synchronization.

From the Microsoft 365 admin center, you verify the contoso.com domain name. You need to prepare the environment for the planned directory synchronization solution.

What should you do first?

- A. From the public DNS zone of contoso.com, add a new mail exchanger (MX) record.
- B. From Active Directory Domains and Trusts, add contoso.com as a UPN suffix
- C. From the Microsoft 365 admin center, verify the contoso.com domain name.
- D. From Active Directory Users and Computers, modify the UPN suffix for all users.

Answer: B

NEW QUESTION 6

- (Exam Topic 1)

Note: This question is part of a series of questions that present the same scenario. Each question in the series contains a unique solution that might meet the stated goals. Some question sets might have more than one correct solution, while others might not have a correct solution.

After you answer a question in this section, you will NOT be able to return to it. As a result these questions will not appear in the review screen.

Your company has a main office and three branch offices. All the branch offices connect to the main office by using a WAN link. The main office has a high-speed Internet connection. All the branch offices connect to the Internet by using the main office connection.

Users use Microsoft Outlook 2016 to connect to 4 Microsoft Exchange Server mailbox hosted in the main office.

The users report that when the WAN link in their office becomes unavailable, they cannot access their mailbox.

You create a Microsoft 365 subscription, and then migrate all the user data to Microsoft 365.

You need to ensure that all the users can continue to use Outlook to receive email messages if a WAN link fails.

Solution: For each branch office, you add a direct connection to the Internet. Does this meet the goal?

- A. Yes
- B. NO

Answer: A

NEW QUESTION 7

- (Exam Topic 1)

Your company has three main offices and one branch office. The branch office is used for research. The company plans to implement a Microsoft 365 tenant and to deploy multi-factor authentication.

You need to recommend a Microsoft 365 solution to ensure that multi-factor authentication is enforced only for users in the branch office.

What should you include in the recommendation?

- A. Microsoft Azure Active Directory (Azure AD) conditional access.
- B. Microsoft Azure Active Directory (Azure AD) password protection.
- C. a device compliance policy
- D. a Microsoft Intune device configuration profile

Answer: A

NEW QUESTION 8

- (Exam Topic 1)

You create a Microsoft 365 subscription.

You plan to deploy Microsoft Office 365 ProPlus applications to all the client computers at your company. You prepare the following XML file for the planned deployment.

```
<Configuration>
  <Add OfficeClientEdition="32"
    Channel="Broad">
    <Product ID="0365ProPlusRetail">
      <Language ID="en-us" />
    </Product>
  </Add>
  <Updates Enabled="TRUE"
    UpdatePath=""
    Channel="Targeted" />
  <Display Level="None"
    AcceptEULA="TRUE" />
</Configuration>
```

Use the drop-down menus to select the answer choice that completes each statement based on the information presented in the graphic.

NOTE: Each correct selection is worth one point.

Office 365 ProPlus feature updates will be installed [answer choice].

▼
once a month
once every six months
once a year

Office 365 ProPlus security updates will be installed [answer choice].

▼
once a month
every six months in January and July
every six months in March and September

- A. Mastered
- B. Not Mastered

Answer: A

Explanation:

References:

<https://docs.microsoft.com/en-us/deployoffice/configuration-options-for-the-office-2016-deployment-tool#update> <https://docs.microsoft.com/en-us/deployoffice/overview-of-update-channels-for-office-365-proplus>

NEW QUESTION 9

- (Exam Topic 1)

Your company has a Microsoft 365 subscription.

You plan to move several archived PST files to Microsoft Exchange Online mailboxes. You need to create an import job for the PST files.

Which three actions should you perform before you create the import job? Each correct answer presents part of the solution.

NOTE: Each correct selection is worth one point.

- A. Create a Microsoft Azure Storage account.
- B. From Security & Compliance, retrieve the SAS key.
- C. Run azcopy.exe to copy the PST files to Microsoft Azure Storage
- D. Use Microsoft Azure Storage Explorer to copy the PST files to Azure Storage.
- E. Create a PST import mapping file.

Answer: BCE

Explanation:

References:

<https://docs.microsoft.com/en-us/office365/securitycompliance/use-network-upload-to-import-pst-files>

NEW QUESTION 10

- (Exam Topic 1)

Your company has a Microsoft Azure Active Directory (Azure AD) directory tenant named contoso.onmicrosoft.com.

All users have client computers that run Windows 10 Pro and are joined to Azure AD. The company purchases a Microsoft 365 E3 subscription.

You need to upgrade all the computers to Windows 10 Enterprise. The solution must minimize administrative effort.

You assign licenses from the Microsoft 365 admin center. What should you do next?

- A. Add a custom domain name to the subscription.
- B. Deploy Windows 10 Enterprise by using Windows Autopilot.
- C. Create provisioning package, and then deploy the package to all the computers.
- D. Instruct all the users to log off of their computer, and then to log in again.

Answer: B

NEW QUESTION 10

- (Exam Topic 1)

Your company has an on-premises Microsoft Exchange Server 2013 organization. The company has 100 users.

The company purchases Microsoft 365 and plans to move its entire.- infrastructure to the cloud.

The company does NOT plan to sync the on-premises Active Directory domain to Microsoft Azure Active Directory (Azure AD).

You need to recommend which type of migration to use to move all email messages, contacts, and calendar items to Exchange Online.

What should you recommend?

- A. cutover migration
- B. IMAP migration
- C. remote move migration
- D. staged migration

Answer: A

Explanation:

References:

<https://docs.microsoft.com/en-us/exchange/mailbox-migration/cutover-migration-to-office-365>

NEW QUESTION 14

- (Exam Topic 1)

Note: This question is part of a series of questions that present the same scenario. Each question in the series contains a unique solution that might meet the stated goals. Some question sets might have more than one correct solution, while others might not have a correct solution.
After you answer a question in this section, you will NOT be able to return to it. As a result these questions will not appear in the review screen.
Your company has a main office and three branch offices. All the branch offices connect to the main office by using a WAN link. The main office has a high-speed Internet connection. All the branch offices connect to the Internet by using the main office connection.
Users use Microsoft Outlook 2016 to connect to 4 Microsoft Exchange Server mailbox hosted in the main office.
The users report that when the WAN link in their office becomes unavailable, they cannot access their mailbox.
You create a Microsoft 365 subscription, and then migrate all the user data to Microsoft 365.
You need to ensure that all the users can continue to use Outlook to receive email messages if a WAN link fails.
Solution: For each device, you configure an additional Outlook profile that uses IMAP. Does this meet the goal?

- A. Yes
- B. NO

Answer: B

NEW QUESTION 15

- (Exam Topic 1)

You have a Microsoft 365 subscription.

You need to prevent phishing email messages from being delivered to your organization. What should you do?

- A. From the Exchange admin center, create an anti-malware policy.
- B. From Security & Compliance, create a DLP policy.
- C. From Security & Compliance, create a new threat management policy.
- D. From the Exchange admin center, create a spam filter policy.

Answer: C

Explanation:

References:

<https://docs.microsoft.com/en-us/office365/securitycompliance/set-up-anti-phishing-policies>

NEW QUESTION 16

- (Exam Topic 1)

Your company has a Microsoft 365 subscription that contains the users shown in the following table.

Name	Role
User1	Global administrator
User2	Security administrator, Guest inviter
User3	None
User4	Password administrator

You need to identify which users can perform the following administrative tasks:

- ☒ Modify the password protection policy.
- ☒ Create guest user accounts.

Which users should you identify for each task? To answer, select the appropriate options in the answer area. NOTE: Each correct selection is worth one point.

Modify the password protection policy:

User1 only

User1 and User2 only

User1, User2, and User4 only

User1, User2, User3, and User4

Create new guest users in Microsoft Azure Active Directory (Azure AD):

User1 only

User1 and User2 only

User1, User2, and User4 only

User1, User2, User3, and User4

- A. Mastered
- B. Not Mastered

Answer: A

Explanation:



Modify the password protection policy:

User1 only
User1 and User2 only
User1, User2, and User4 only
User1, User2, User3, and User4

Create new guest users in Microsoft Azure Active Directory (Azure AD):

User1 only
User1 and User2 only
User1, User2, and User4 only
User1, User2, User3, and User4

NEW QUESTION 21

- (Exam Topic 1)
 You have a Microsoft Azure Active Directory (Azure AD) tenant named contoso.com that includes a user named User1.
 You enable multi-factor authentication for contoso.com and configure the following two fraud alert settings:  Set Allow users to submit fraud alerts: On
 Automatically block users who report fraud: On
 You need to instruct the users in your organization to use the fraud reporting features correctly. What should you tell the users to do? To answer, select the appropriate options in the answer area. NOTE: Each correct selection is worth one point.

A user can report fraud on her account by:

Typing a special code after receiving an alert call
Sending an email message to an administrator
Using the Microsoft Authenticator app

If User1 reports fraud on his account, the account will be blocked automatically for:

6 hours
1 day
7 days
90 days

- A. Mastered
- B. Not Mastered

Answer: A

Explanation:
 References:
<https://docs.microsoft.com/en-us/azure/active-directory/authentication/howto-mfa-mfasettings#fraud-alert>

NEW QUESTION 23

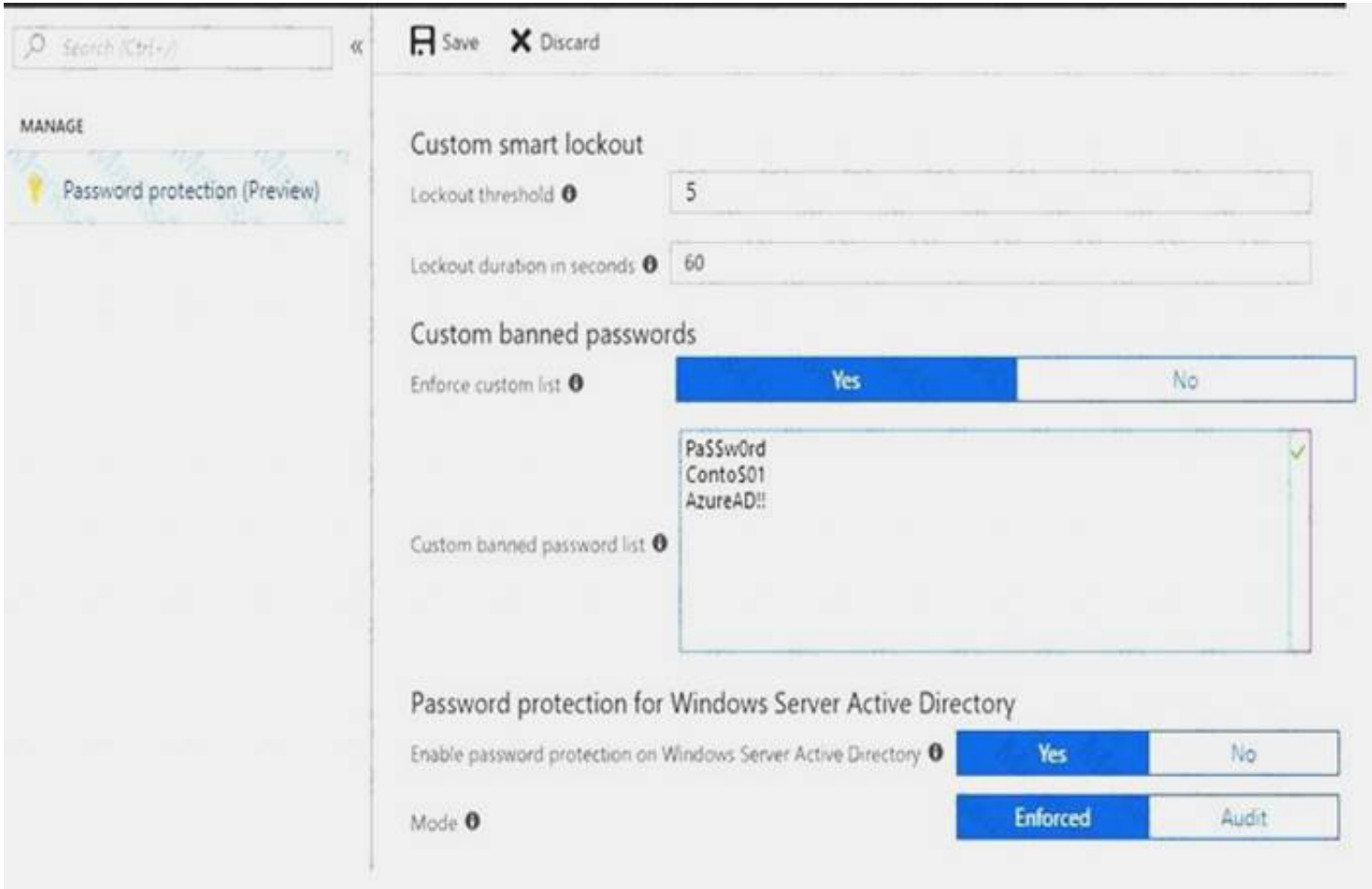
- (Exam Topic 1)
 You have a Microsoft 365 subscription.
 Your company deploys an Active Directory Federation Services (AD FS) solution. You need to configure the environment to audit AD FS user authentication.
 Which two actions should you perform? Each correct answer presents part of the solution. NOTE: Each correct selection is worth one point.

- A. From all the AD FS servers, run audltpol.exe.
- B. From all the domain controllers, run the set-AdminAuditLogConfig cmdlet and specify the –LogiLevel parameter.
- C. On a domain controller install Azure AD Connect Health for AD DS.
- D. From the Azure AO Connect server, run the Register-AzureADConnectHealthSyncAgent cmdlet.
- E. On an server, install Azure AD Connect Health (or AD FS).

Answer: DE

NEW QUESTION 25

- (Exam Topic 1)
 You have a Microsoft 365 Enterprise subscription.
 You create a password policy as shown in the following exhibit.



Use the drop-down menus to select the answer choice that completes each statement based on the information presented in the graphic.
NOTE: Each correct selection is worth one point.

If users are locked out of their account, they have [answer choice].

five sign-in attempts each subsequent minute

one sign-in attempt each subsequent minute

five sign-in attempts every five minutes

one sign-in attempt every five minutes

Users can create a password of [answer choice].

Password11

ContoS01Pa\$\$word

AzureAD!!111

pa\$\$w0rd

- A. Mastered
- B. Not Mastered

Answer: A

Explanation:

References:
<https://docs.microsoft.com/en-us/azure/active-directory/authentication/concept-password-ban-bad>

NEW QUESTION 26

- (Exam Topic 1)
Note: This question it part of a series of questions that present the same scenario. Cacti question in the series contains a unique solution that might meet the stated goals. Some question sets might have more than one correct solution, while others might not have a correct solution.
After you answer a question in this section, you will NOT be able to return to it. As a result, these questions will not appear in the review screen.
Your company has a Microsoft Office 36S tenant.
You suspect that several Office 365 features were recently updated.
You need to view a last of the features that were recently updated in the tenant. Solution: You use Message center in the Microsoft 365 admin center.
Does this meet the goal?

- A. Yes
- B. NO

Answer: A

NEW QUESTION 31

- (Exam Topic 1)
Your company has a Microsoft 365 subscription that has multi-factor authentication configured for all users. Users on the network report that they are prompted for multi-factor authentication multiple times a day.
You need to reduce the number of times the users are prompted for multi-factor authentication on their company-owned devices. What should you do?

- A. Enable the multi-factor authentication trusted IPs setting, and then verify each device as a trusted device.
- B. Enable the remember multi-factor authentication setting, and then verify each device as a trusted device.
- C. Enable the multi-factor authentication trusted IPs setting, and then join all client computers to Microsoft Azure Active Directory (Azure AD).
- D. Enable the remember multi-factor authentication setting, and then join all client computers to Microsoft Azure Active Directory (Azure AD).

Answer: B

Explanation:

References:
<https://docs.microsoft.com/en-us/azure/active-directory/authentication/howto-mfa-mfasettings>

NEW QUESTION 36

- (Exam Topic 1)

You purchase Microsoft 365, and then implement directory synchronization. You plan to publish the web applications. You need to ensure that all the applications are accessible by using the My Apps portal. The solution must minimize administrative effort. What should you do first?

- A. Deploy one conditional access policy.
- B. Deploy one connector.
- C. Create four application registrations.
- D. Create a site-to-site VPN from Microsoft Azure to the on-premises network.

Answer: B

NEW QUESTION 38

- (Exam Topic 1)

You have a Microsoft 365 subscription that contains a Microsoft Azure Active Directory (Azure AD) tenant named contoso.com. The tenant includes a user named User1

You enable Azure AD Identity Protection.

You need to ensure that User1 can review the list in Azure AD Identity Protection of users nagged for risk. The solution must use the principle of least privilege. To which role should you add User1?

- A. Security reader
- B. Compliance administrator
- C. Reports reader
- D. Global administrator

Answer: A

NEW QUESTION 39

- (Exam Topic 1)

You have a Microsoft 365 subscription. All users have client computers that run Windows 10 and have Microsoft Office 365 ProPlus installed. Some users in the research department work for extended periods of time without an Internet connection. How many days can the research department users remain offline before they are prevented from editing Office documents?

- A. 10
- B. 30
- C. 90
- D. 120

Answer: B

NEW QUESTION 40

- (Exam Topic 1)

You have a Microsoft 365 subscription.

A new corporate security policy states that you must automatically send DLP incident reports to the users in the legal department.

You need to schedule the email delivery of the reports. The solution must ensure that the reports are sent as frequently as possible.

How frequently can you share the reports?

- A. hourly
- B. monthly
- C. weekly
- D. daily

Answer: C

NEW QUESTION 45

- (Exam Topic 1)

Note: This question is part of a series of questions that present the same scenario. Each question in the series contains a unique solution that might meet the stated goals. Some question sets might have more than one correct solution, while others might not have a correct solution.

After you answer a question in this section, you will NOT be able to return to it. As a result, these questions will not appear in the review screen.

Your network contains an Active Directory forest. You deploy Microsoft 365.

You plan to implement directory synchronization.

You need to recommend a security solution for the synchronized identities. The solution must meet the following requirements:

- ▶ Users must be able to authenticate successfully to Microsoft 365 services if Active Directory becomes unavailable.
- ▶ Users passwords must be 10 characters or more.

Solution: Implement password hash synchronization and modify the password settings from the Default Domain Policy in Active Directory.

Does this meet the goal?

- A. Yes
- B. No

Answer: A

NEW QUESTION 48

- (Exam Topic 1)

You create a Microsoft 365 Enterprise subscription. You assign licenses for all products to all users.

You need to ensure that all Microsoft Office 365 ProPlus installations occur from a network share. The solution must prevent the users from installing Office 365 ProPlus from the Internet.

Which three actions should you perform? Each correct answer presents part of the solution. NOTE: Each correct selection is worth one point.

- A. From your computer, run setup.exe /download downloadconfig.xml.
- B. Create an XML download file.
- C. From the Microsoft 365 admin center, deactivate the Office 365 licenses for all the users.
- D. From each client computer, run setup.exe /configure installconfig.xml.
- E. From the Microsoft 365 admin center, configure the Software download settings.

Answer: BDE

Explanation:

References:

<https://docs.microsoft.com/en-us/deployoffice/overview-of-the-office-2016-deployment-tool#download-the-inst>

NEW QUESTION 53

- (Exam Topic 1)

Your network contains an Active Directory forest named adatum.local. The forest contains 500 users and uses adatum.com as a UPN suffix.

You deploy a Microsoft 365 tenant.

You implement directory synchronization and sync only 50 support users.

You discover that five of the synchronized users have usernames that use a UPN suffix of onmicrosoft.com. You need to ensure that all synchronized identities retain the UPN set in their on-premises user account. What should you do?

- A. From the Microsoft 365 admin center, add adatum.com as a custom domain name.
- B. From Windows PowerShell, run the Set-ADDomain –AllowedDNSSuffixes adatum.com command.
- C. From Active Directory Users and Computers, modify the UPN suffix of the five user accounts.
- D. From the Microsoft 365 admin center, add adatum.local as a custom domain name.

Answer: C

NEW QUESTION 54

- (Exam Topic 1)

Note: This question is part of a series of questions that present the same scenario. Each question in the series contains a unique solution that might meet the stated goals. Some question sets might have more than one correct solution, while others might not have a correct solution.

After you answer a question in this section, you will NOT be able to return to it. As a result, these questions will not appear in the review screen.

Your company has a Microsoft Office 365 tenant.

You suspect that several Office 365 features were recently updated.

You need to view a list of the features that were recently updated in the tenant. Solution: You use Dashboard in Security & Compliance.

Does this meet the goal?

- A. Yes
- B. NO

Answer: B

NEW QUESTION 55

- (Exam Topic 1)

Your company has a Microsoft 365 subscription.

Your plan to add 100 newly hired temporary users to the subscription next week. You create the user accounts for the new users.

You need to assign licenses to the new users. Which command should you run?

- A.

```
$NewStaff = Get-AzureADUser -All -Department "Temp" -UsageLocation "";  
$NewStaff | foreach {Set-AzureADUser -LicenseOptions "contoso:ENTERPRISEPACK"}
```
- B.

```
$NewStaff = Get-AzureADUser -All -Department "Temp" -UsageLocation "US" -UnlicensedUsersOnly;  
$NewStaff | foreach {Set-AzureADUserLicense -AddLicenses "contoso:ENTERPRISEPACK"}
```
- C.

```
$NewStaff = Get-AzureADUser -All -Department "Temp" -UsageLocation "";  
$NewStaff | foreach {Set-AzureADUserLicense -LicenseOptions "contoso:ENTERPRISEPACK"}
```
- D.

```
$NewStaff = Get-AzureADUser -All -Department "Temp" -UsageLocation "US" -UnlicensedUsersOnly;  
$NewStaff | foreach {Set-AzureADUser -AddLicenses "contoso:ENTERPRISEPACK"}
```

A. Option A

- B. Option B
- C. Option C
- D. Option D

Answer: B

NEW QUESTION 58

- (Exam Topic 2)

Note This question is part of a series of questions that present the same scenario. Each question in the series contains a unique solution that might meet the stated goals. Some question sets might have more than one correct solution, while others might not have a correct solution.

After you answer a question in this section, you will NOT be able to return to it. As a result, these questions will not appear in the review screen.

You need to assign User2 the required roles to meet the security requirements.

Solution: From the Office 365 admin center, you assign User2 the Security Administrator role. From the Exchange admin center, you add User2 to the View-Only Management role.

Does this meet the goal?

- A. Yes
- B. NO

Answer: B

NEW QUESTION 60

- (Exam Topic 3)

You need to ensure that all the sales department users can authenticate successfully during Project1and Project2.

Which authentication strategy should you implement for the pilot projects?

- A. password hash synchronization and seamless SSO
- B. pass-through authentication
- C. password hash synchronization
- D. pass-through authentication and seamless SSO

Answer: A

Explanation:

References:

<https://docs.microsoft.com/en-us/azure/security/azure-ad-choose-authn>

NEW QUESTION 61

- (Exam Topic 3)

You need to prepare the environment for Project1. You create the Microsoft 365 tenant.

Which three actions should you perform in sequence next? To answer, move the appropriate actions from the list of actions to the answer area and arrange them in the correct order.

Actions

Configure the required DNS records and verify fabrikam.com as a custom domain.

Implement directory synchronization.

Create a Microsoft Azure Active Directory (Azure AD) tenant.

Modify the Exchange ActiveSync Access Settings.

Run the Hybrid Configuration wizard.

Answer Area

- A. Mastered
- B. Not Mastered

Answer: A

Explanation:

Actions

Configure the required DNS records and verify fabrikam.com as a custom domain.

Implement directory synchronization.

Create a Microsoft Azure Active Directory (Azure AD) tenant.

Modify the Exchange ActiveSync Access Settings.

Run the Hybrid Configuration wizard.

Answer Area

Create a Microsoft Azure Active Directory (Azure AD) tenant.

Configure the required DNS records and verify fabrikam.com as a custom domain.

Implement directory synchronization.

NEW QUESTION 66

- (Exam Topic 3)

Which role should you assign to User1?

- A. Security Administrator
- B. Records Management
- C. Security Reader
- D. Hygiene Management

Answer: C

NEW QUESTION 68

- (Exam Topic 3)

You need to meet the application requirement for App1.

Which three actions should you perform? Each correct answer presents part of the solution. NOTE: Each correct selection is worth one point.

- A. From the Azure Active Directory admin center, configure the application URL settings.
- B. From the Azure Active Directory admin center, add an enterprise application.
- C. On an on-premises server, download and install the Microsoft AAD Application Proxy connector.
- D. On an on-premises server, install the Hybrid Configuration wizard.
- E. From the Microsoft 365 admin center, configure the Software download settings.

Answer: ABC

Explanation:

References:

<https://docs.microsoft.com/en-us/azure/active-directory/manage-apps/application-proxy#how-application-proxy->

NEW QUESTION 71

- (Exam Topic 3)

Which migration solution should you recommend for Project1?

- A. From Exchange Online PowerShell, run the New-MailboxImportRequest cmdlet.
- B. From Exchange Online PowerShell, run the New-MailboxExportRequest cmdlet.
- C. From the Microsoft 365 admin center, start a data migration and click Upload PSST as the data service.
- D. From the Exchange admin center, start a migration and select Remote move migration

Answer: D

NEW QUESTION 76

.....

Thank You for Trying Our Product

We offer two products:

1st - We have Practice Tests Software with Actual Exam Questions

2nd - Questons and Answers in PDF Format

MS-100 Practice Exam Features:

- * MS-100 Questions and Answers Updated Frequently
- * MS-100 Practice Questions Verified by Expert Senior Certified Staff
- * MS-100 Most Realistic Questions that Guarantee you a Pass on Your FirstTry
- * MS-100 Practice Test Questions in Multiple Choice Formats and Updatesfor 1 Year

100% Actual & Verified — Instant Download, Please Click
[Order The MS-100 Practice Test Here](#)