



Cisco

Exam Questions 300-420

Designing Cisco Enterprise Networks (ENSLD)

About ExamBible

[Your Partner of IT Exam](#)

Found in 1998

ExamBible is a company specialized on providing high quality IT exam practice study materials, especially Cisco CCNA, CCDA, CCNP, CCIE, Checkpoint CCSE, CompTIA A+, Network+ certification practice exams and so on. We guarantee that the candidates will not only pass any IT exam at the first attempt but also get profound understanding about the certificates they have got. There are so many alike companies in this industry, however, ExamBible has its unique advantages that other companies could not achieve.

Our Advances

* 99.9% Uptime

All examinations will be up to date.

* 24/7 Quality Support

We will provide service round the clock.

* 100% Pass Rate

Our guarantee that you will pass the exam.

* Unique Gurantee

If you do not pass the exam at the first time, we will not only arrange FULL REFUND for you, but also provide you another exam of your claim, ABSOLUTELY FREE!

NEW QUESTION 1

An enterprise customer has these requirements:

- end-to-end QoS for the business-critical applications and VoIP services based on CoS marking.
- flexibility to offer services such as IPv6 and multicast without any reliance on the service provider.
- support for full-mesh connectivity at Layer 2.

Which WAN connectivity option meets these requirements?

- A. VPWS
- B. MPLS VPN
- C. DMVPN
- D. VPLS

Answer: D

NEW QUESTION 2

Which design consideration must be made when dual vEdge routers are deployed at a branch site?

- A. Use BGP AS-path prepending to influence egress traffic and use MED to influence ingress traffic from the branch.
- B. HSRP priorities must match the OMP routing policy to prefer one vEdge over the other.
- C. Traffic must be symmetrical as it egresses the vEdges and returns from remote sites for DPI to function properly.
- D. Configure BFD between vEdge routers to detect sub-second link failures.

Answer: A

NEW QUESTION 3

A branch office has a primary L3VPN MPLS connection back to the main office and an IPSEC VPN tunnel that serves as backup. Which design ensures that data is sent over the backup connection only if the primary MPLS circuit is down?

- A. Use EIGRP to establish a neighbor relationship with the main office via L3VPN MPLS and the IPSECVPN tunnel.
- B. Use BGP with the multipath feature enabled to force traffic via the primary path when available.
- C. Use static routes tied to an IP SLA to prefer the primary path while a floating static route points to the backup connection.
- D. Use OSPF with a passive-interface command on the backup connection.

Answer: C

NEW QUESTION 4

An engineer must propose a QoS architecture model that allows an application to inform the network of its traffic profile and to request a particular type of service to support its bandwidth and delay requirements. The application requires consistent and dedicated bandwidth end to end. Which QoS architecture model meets these requirements?

- A. DiffServ
- B. LLQ
- C. WRED
- D. IntServ

Answer: D

NEW QUESTION 5

Which two best practices must be followed when designing an out-of-band management network? (Choose two.)

- A. Enforce access control
- B. Facilitate network integration
- C. Back up data using the management network
- D. Ensure that the management network is a backup to the data network
- E. Ensure network isolation

Answer: AE

NEW QUESTION 6

Which feature must be incorporated into the campus LAN design to enable Wake on LAN?

- A. dynamic ARP Inspection Snooping on layer 2 devices
- B. directed broadcasts on layer 3 devices
- C. proxy ARP on layer 3 devices
- D. DHCP Snooping on layer 2 devices

Answer: B

NEW QUESTION 7

In an SD-WAN architecture, which methods are used to bootstrap a vEdge router?

- A. DHCP options or manual configuration
- B. vManage or DNS records
- C. ZTP or manual configuration

D. DNS records or DHCP options

Answer: C

NEW QUESTION 8

Which two routing protocols allow for unequal cost load balancing? (Choose two.)

- A. EIGRP
- B. IS-IS
- C. BGP
- D. OSPF
- E. RIPvng

Answer: AC

NEW QUESTION 9

When IPsec VPNs are designed, what is a unique requirement if support for IP Multicast is required?

- A. encapsulation of traffic with GRE or VTI
- B. IPsec forwarding using transport mode
- C. additional bandwidth for headend
- D. IPsec forwarding using tunnel mode

Answer: A

NEW QUESTION 10

A customer with an IPv4 only network topology wants to enable IPv6 connectivity while preserving the IPv4 topology services. The customer plans to migrate IPv4 services to the IPv6 topology, then decommission the IPv4 topology. Which topology supports these requirements?

- A. dual stack
- B. 6VPE
- C. 6to4
- D. NAT64

Answer: A

NEW QUESTION 10

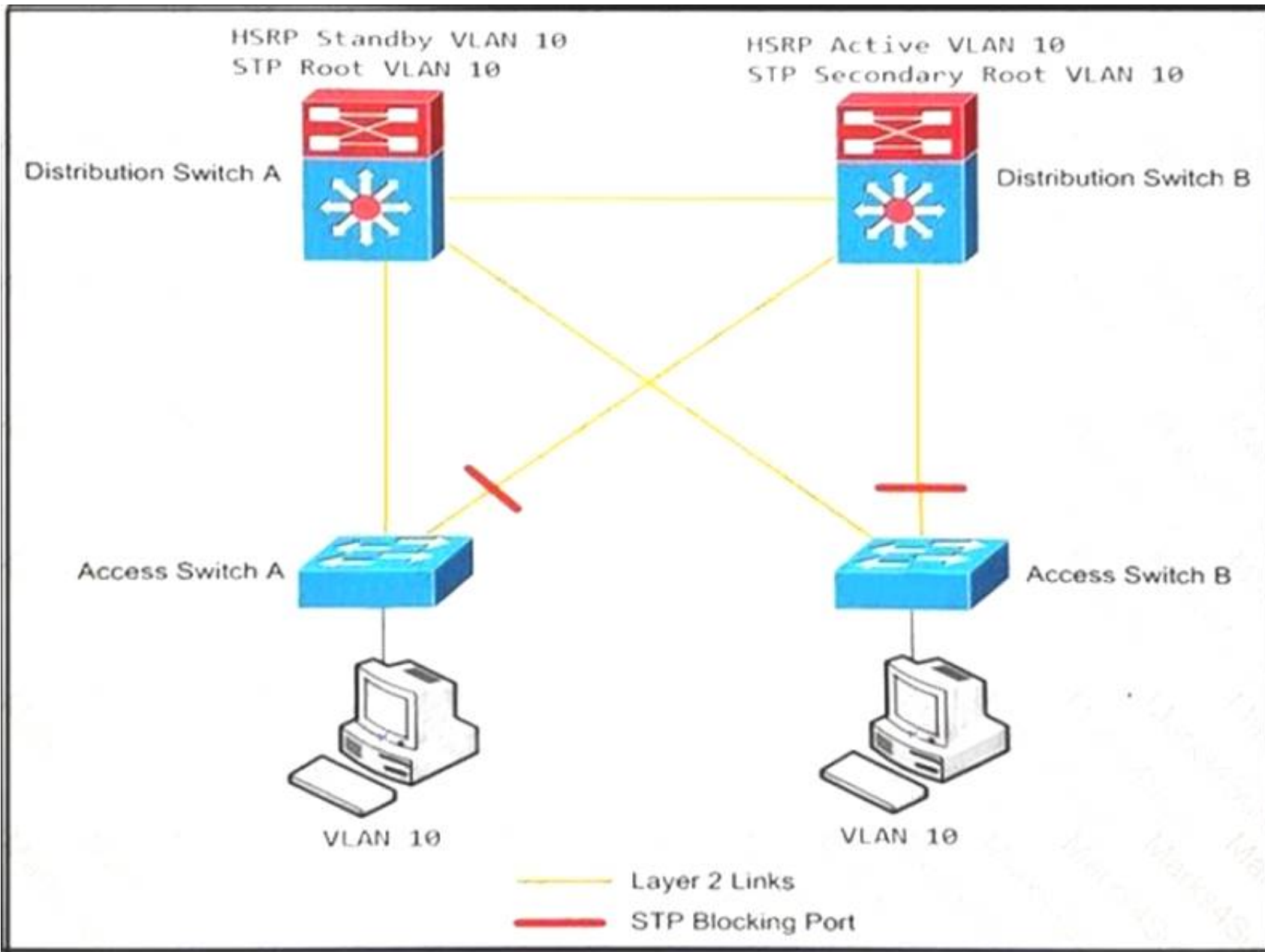
How do endpoints inside an SD-Access network reach resources outside the fabric?

- A. a VRF fusion router is used to map resources in one VN to another VN
- B. Fabric borders use VRFs to map VNs to VRFs
- C. SD-Access transit links are used to transport encapsulated traffic from one fabric to another
- D. A fabric edge is used to de-encapsulate VXLAN traffic to normal IP traffic then transported over the outside network

Answer: D

NEW QUESTION 14

Refer to the exhibit.



An engineer must optimize the traffic flow of the network. Which change provides a more efficient design between the access and the distribution layer?

- A. Add a link between access switch A and access switch B
- B. Reconfigure the distribution switch A to become the HSRP Active
- C. Change the link between distribution switch A and distribution switch B to be a routed link
- D. Create an EtherChannel link between distribution switch A and distribution switch B

Answer: B

NEW QUESTION 15

A router running ISIS is showing high CPU and bandwidth utilization. An engineer discovers that the router is configured as L1/L2 and has L1 and L2 neighbors. Which step optimizes the design to address the issue?

- A. Make this router a DIS for each of the interfaces
- B. Disable the default behavior of advertising the default route on the L1/L2 router
- C. Configure the router to be either L1 or L2
- D. Configure each interface as either L1 or L2 circuit type

Answer: D

NEW QUESTION 19

Drag and drop the characteristics from the left onto the correct telemetry mode on the right.

The collector initiates a session to the device	Dial-In <div style="background-color: #fff176; height: 30px; margin-bottom: 5px;"></div> <div style="background-color: #fff176; height: 30px; margin-bottom: 5px;"></div>
supports TCP, UDP, and gRPC	
The device initiates a session to the collector	Dial-Out <div style="background-color: #fff176; height: 30px; margin-bottom: 5px;"></div> <div style="background-color: #fff176; height: 30px; margin-bottom: 5px;"></div>
supports gRPC only	

B. Not Mastered

Answer: A

Explanation:

In a dial-in mode, the destination initiates a session to the router and subscribes to data to be streamed. Dialin mode is supported over gRPC in only 64-bit platforms

In a dial-out mode, the router initiates a session to the destinations based on the subscription. All 64-bit IOS XR platforms (except for NCS 6000 series routers) support gRPC and TCP protocols. All 32-bit IOS XR platforms support only TCP.

NEW QUESTION 21

.....

Relate Links

100% Pass Your 300-420 Exam with ExamBible Prep Materials

<https://www.exambible.com/300-420-exam/>

Contact us

We are proud of our high-quality customer service, which serves you around the clock 24/7.

Viste - <https://www.exambible.com/>