

300-410 Dumps

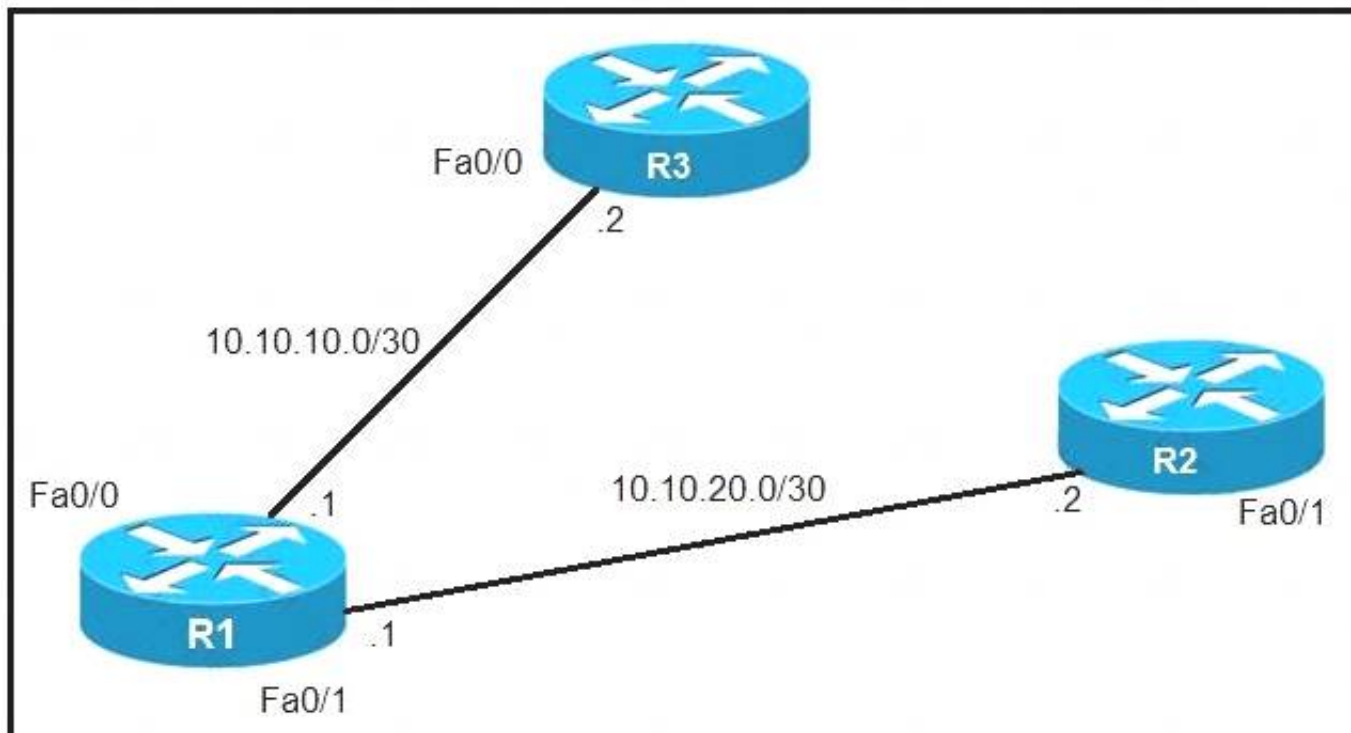
Implementing Cisco Enterprise Advanced Routing and Services (ENARSI)

<https://www.certleader.com/300-410-dumps.html>



NEW QUESTION 1

Refer to the exhibit.



An IP SLA was configured on router R1 that allows the default route to be modified in the event that Fa0/0 loses reachability with the router R3 Fa0/0 interface. The route has changed to flow through router R2. Which debug command is used to troubleshoot this issue?

- A. debug ip flow
- B. debug ip sla error
- C. debug ip routing
- D. debug ip packet

Answer: C

NEW QUESTION 2

An engineer is trying to copy an IOS file from one router to another router by using TFTP. Which two actions are needed to allow the file to copy? (Choose two.)

- A. Copy the file to the destination router with the copy tftp: flash: command
- B. Enable the TFTP server on the source router with the tftp-server flash: <filename> command
- C. TFTP is not supported in recent IOS versions, so an alternative method must be used
- D. Configure a user on the source router with the username tftp password tftp command
- E. Configure the TFTP authentication on the source router with the tftp-server authentication local command

Answer: AB

NEW QUESTION 3

A network engineer is investigating a flapping (up/down) interface issue on a core switch that is synchronized to an NTP server. Log output currently does not show the time of the flap. Which command allows the logging on the switch to show the time of the flap according to the clock on the device?

- A. service timestamps log uptime
- B. clock summer-time mst recurring 2 Sunday mar 2:00 1 Sunday nov 2:00
- C. service timestamps log datetime localtime show-timezone
- D. clock calendar-valid

Answer: A

NEW QUESTION 4

Drag and drop the SNMP attributes in Cisco IOS devices from the left onto the correct SNMPv2c or SNMPV3 categories on the right.

community string

username and password

authentication

no encryption

privileged

read-only

SNMPv2c

SNMPv3

- A. Mastered
- B. Not Mastered

Answer: A

Explanation:

community string

username and password

authentication

no encryption

privileged

read-only

SNMPv2c

community string

no encryption

read-only

SNMPv3

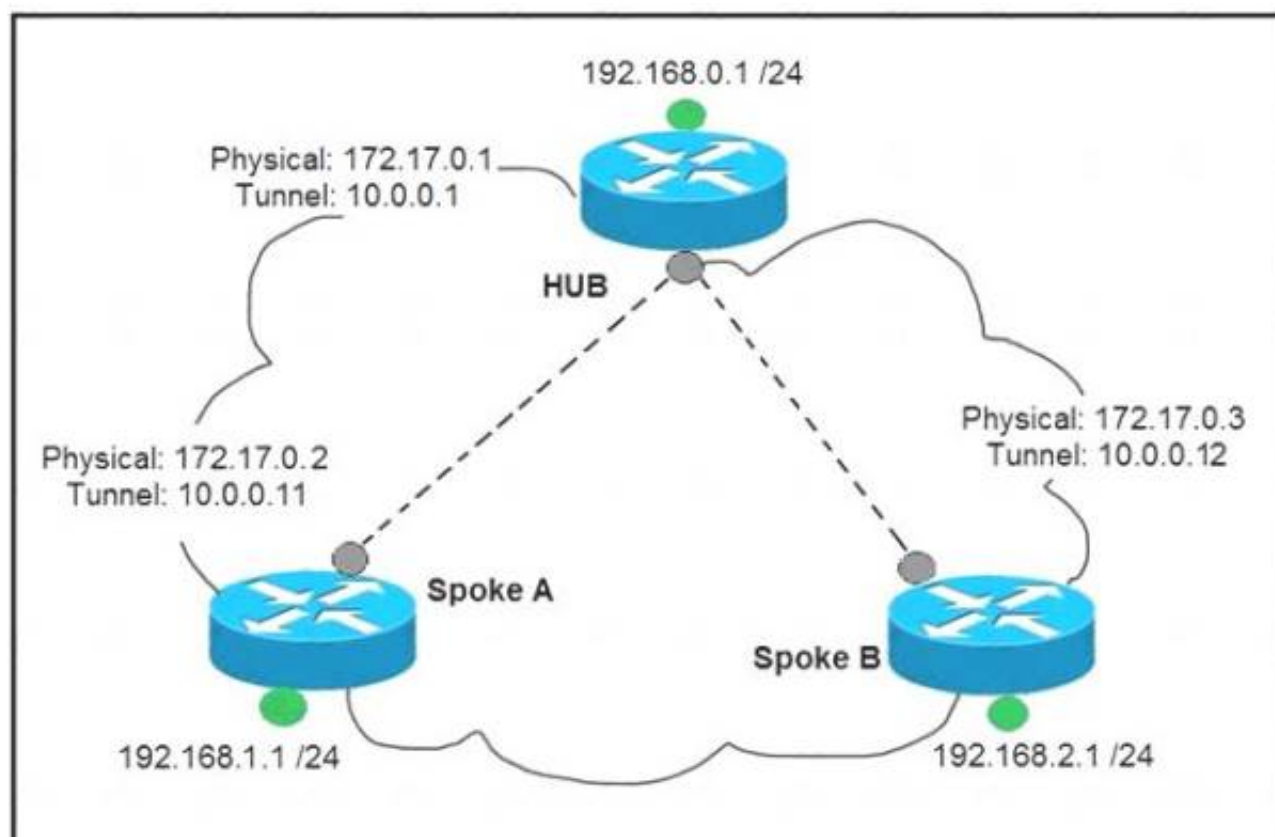
username and password

authentication

privileged

NEW QUESTION 5

Refer to the exhibit.



Which interface configuration must be configured on the spoke A router to enable a dynamic DMVPN tunnel with the spoke B router?

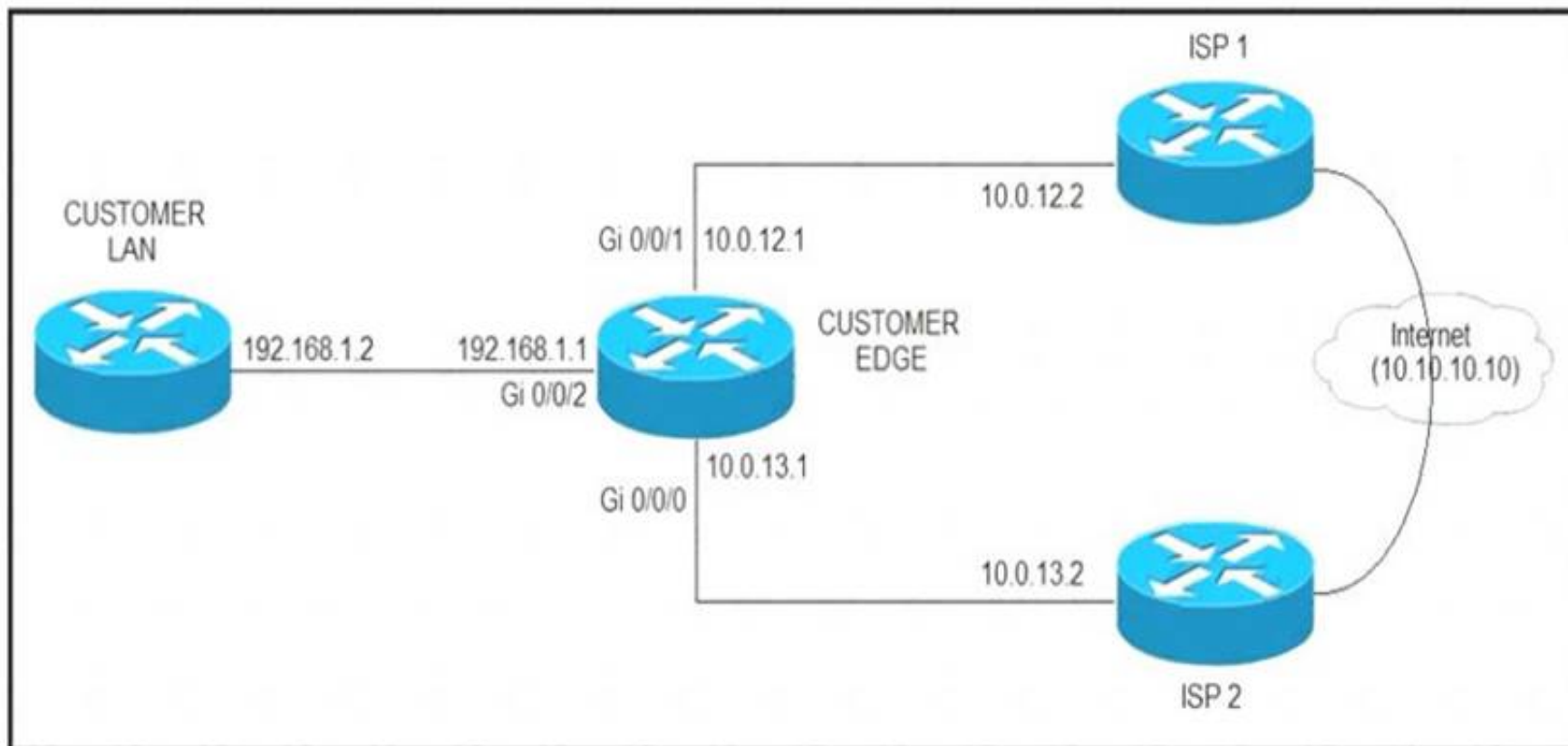
- A. **interface Tunnel0**
description mGRE – DMVPN Tunnel
ip address 10.0.0.11 255.255.255.0
ip nhrp map multicast dynamic
ip nhrp network-id 1
tunnel source 10.0.0.1
tunnel destination FastEthernet 0/0
tunnel mode gre multipoint
- B. **interface Tunnel0**
ip address 10.0.0.11 255.255.255.0
ip nhrp network-id 1
tunnel source FastEthernet 0/0
tunnel mode gre multipoint
ip nhrp nhs 10.0.0.1
ip nhrp map 10.0.0.1 172.17.0.1
- C. **interface Tunnel0**
ip address 10.1.0.11 255.255.255.0
ip nhrp network-id 1
tunnel source 1.1.1.10
ip nhrp map 10.0.0.11 172.17.0.2
tunnel mode gre
- D. **interface Tunnel0**
ip address 10.0.0.11 255.255.255.0
ip nhrp map multicast static
ip nhrp network-id 1
tunnel source 10.0.0.1
tunnel mode gre multipoint

- A. Option A
- B. Option B
- C. Option C
- D. Option D

Answer: A

NEW QUESTION 6

Refer to the exhibit.



ISP 1 and ISP 2 directly connect to the Internet. A customer is tracking both ISP links to achieve redundancy and cannot see the Cisco IOS IP SLA tracking output on the router console. Which command is missing from the IP SLA configuration?

- A. Start-time 00:00
- B. Start-time 0
- C. Start-time immediately
- D. Start-time now

Answer: D

NEW QUESTION 7

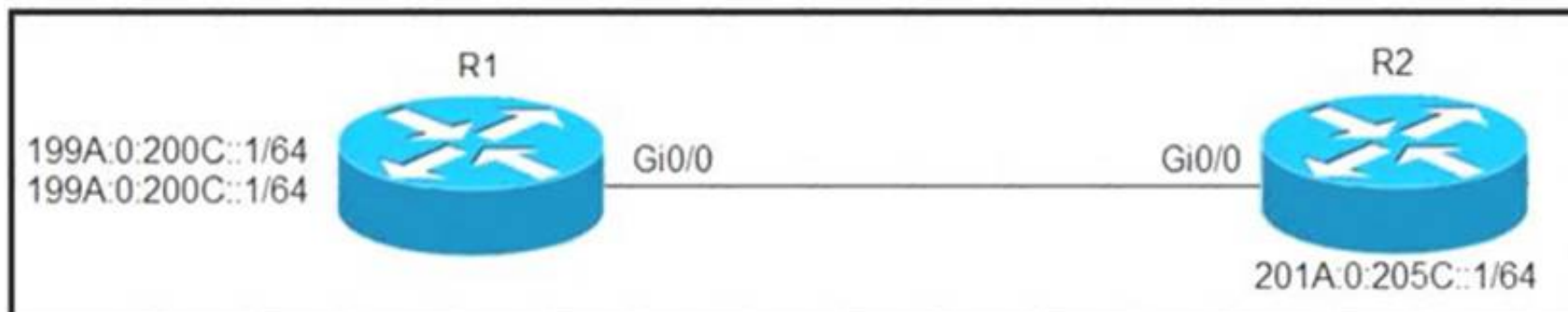
Which command displays the IP routing table information that is associated with VRF-Lite?

- A. show ip vrf
- B. show ip route vrf
- C. show run vrf
- D. show ip protocols vrf

Answer: B

NEW QUESTION 8

Refer to the exhibit.



Which configuration denies Telnet traffic to router 2 from 198A:0:200C::1/64?

- A. `ipv6 access-list Deny_Telnet sequence 10 deny tcp host 198A:0:200C::1/64 host 201A:0:205C::1/64 eq telnet`
!
`int Gi0/0`
`ipv6 traffic-filter Deny_Telnet in`
!
- B. `ipv6 access-list Deny_Telnet sequence 10 deny tcp host 198A:0:200C::1/64 host 201A:0:205C::1/64 eq telnet`
!
`int Gi0/0`
`ipv6 access-map Deny_Telnet in`
!
- C. `ipv6 access-list Deny_Telnet sequence 10 deny tcp host 198A:0:200C::1/64 host 201A:0:205C::1/64`
!
`int Gi0/0`
`ipv6 access-map Deny_Telnet in`
!
- D. `ipv6 access-list Deny_Telnet sequence 10 deny tcp host 198A:0:200C::1/64 host 201A:0:205C::1/64`
!
`int Gi0/0`
`ipv6 traffic-filter Deny_Telnet in`
!

- A. Option A
B. Option B
C. Option C
D. Option D

Answer: A

NEW QUESTION 9

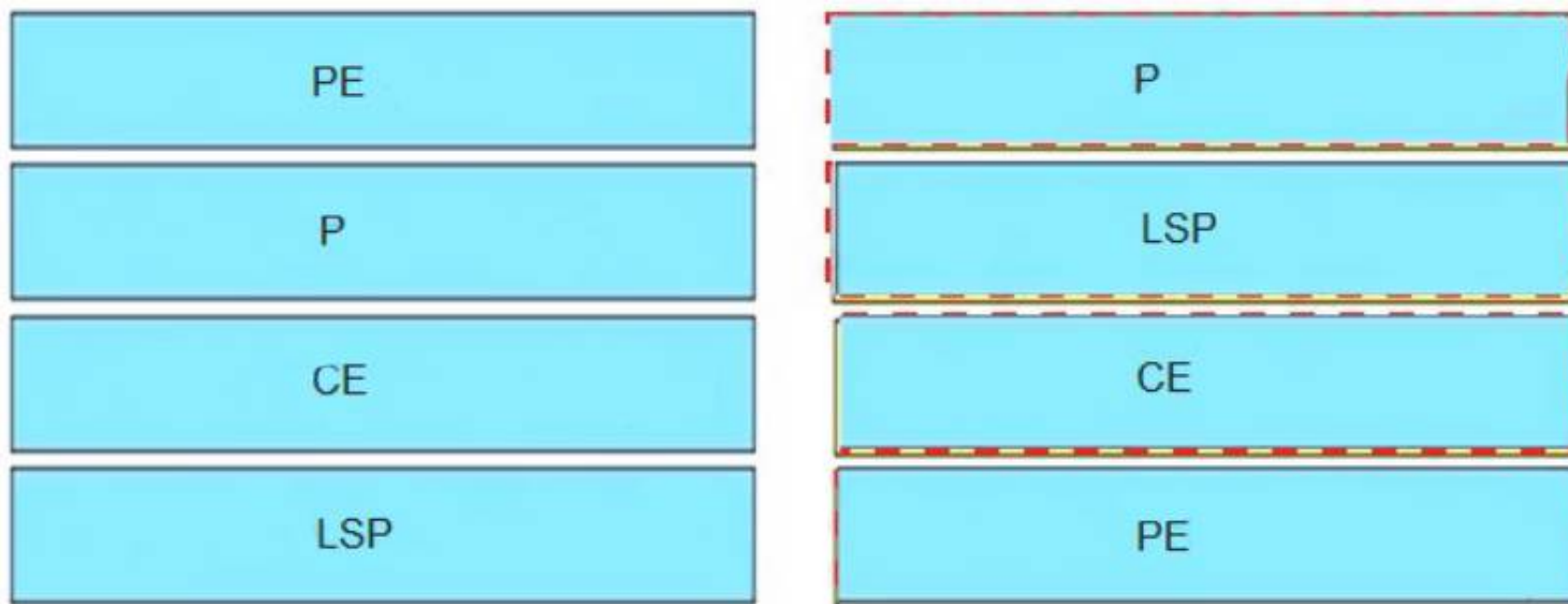
Drag and drop the MPLS terms from the left onto the correct definitions on the right.

PE	device that forwards traffic based on labels
P	path that the labeled packet takes
CE	device that is unaware of MPLS labeling
LSP	device that removes and adds the MPLS labeling

- A. Mastered
B. Not Mastered

Answer: A

Explanation:



NEW QUESTION 10

When provisioning a device in Cisco DNA Center, the engineer sees the error message “Cannot select the device. Not compatible with template”. What is the reason for the error?

- A. The template has an incorrect configuration.
- B. The software version of the template is different from the software version of the device.
- C. The changes to the template were not committed.
- D. The tag that was used to filter the templates does not match the device tag.

Answer: B

NEW QUESTION 10

An engineer configured the wrong default gateway for the Cisco DNA Center enterprise interface during the install. Which command must the engineer run to correct the configuration?

- A. sudo maglev-config update
- B. sudo maglev install config update
- C. sudo maglev reinstall
- D. sudo update config install

Answer: A

NEW QUESTION 14

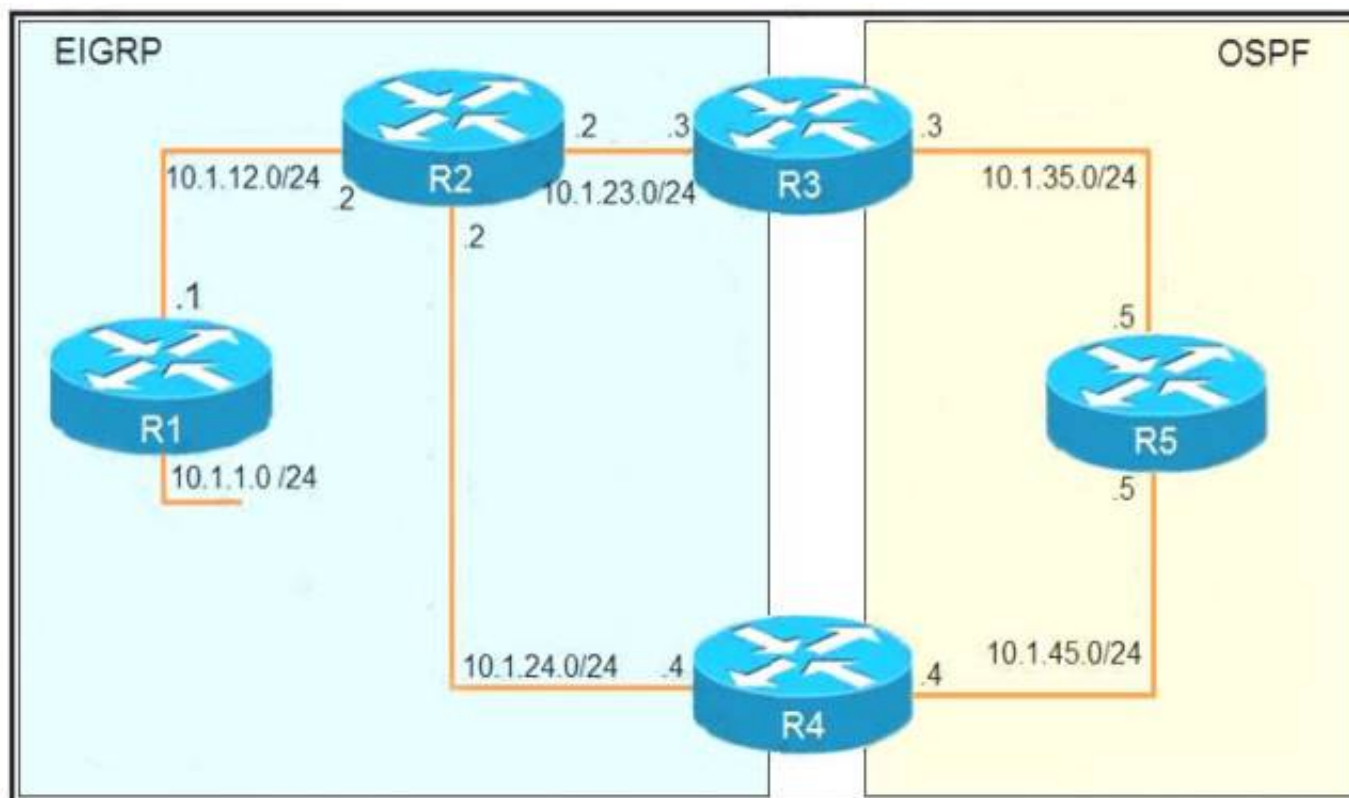
Which attribute eliminates LFAs that belong to protected paths in situations where links in a network are connected through a common fiber?

- A. shared risk link group-disjoint
- B. linecard-disjoint
- C. lowest-repair-path-metric
- D. interface-disjoint

Answer: A

NEW QUESTION 15

Refer to the exhibit.



```

R1
router eigrp 1
 redistribute connected
 network 10.1.12.1 0.0.0.0

R3
router ospf 1
 redistribute eigrp 1 subnets
 network 10.1.35.3 0.0.0.0 area 0

R4
router eigrp 1
 redistribute ospf 1 metric 2000000 1 255 1 1500
!
router ospf 1
 network 10.1.45.4 0.0.0.0 area 0

R5#traceroute 10.1.1.1

Type escape sequence to abort.
Tracing the route to 10.1.1.1

 0 10.1.35.3 80 msec 44 msec 20 msec
 1 10.1.23.2 44 msec 104 msec 64 msec
 2 10.1.24.4 44 msec 64 msec 40 msec
 3 10.1.45.5 24 msec 40 msec 20 msec
 4 10.1.35.3 92 msec 144 msec 148 msec
 5 10.1.23.2 108 msec 76 msec 80 msec
<output truncated>
    
```

The output of the trace route from R5 shows a loop in the network. Which configuration prevents this loop?

A)

R3

```
router ospf 1
```

```
 redistribute eigrp 1 subnets route-map SET-TAG
```

```
!
```

```
route-map SET-TAG permit 10
```

```
 set tag 1
```

R4

```
router eigrp 1
```

```
 redistribute ospf 1 metric 2000000 1 255 1 1500 route-map FILTER-TAG
```

```
!
```

```
route-map FILTER-TAG deny 10
```

```
 match tag 1
```

```
!
```

```
route-map FILTER-TAG permit 20
```

B)


```
R3
router eigrp 1
 redistribute OSPF 1 route-map SET-TAG
!
route-map SET-TAG permit 10
 set tag 1
```

```
R4
router eigrp 1
 redistribute ospf 1 metric 2000000 1 255 1 1500 route-map FILTER-TAG
 network 10.1.24.4 0.0.0.0
!
route-map FILTER-TAG deny 10
 match tag 1
!
route-map FILTER-TAG permit 20
```

C)

```
R3
router ospf 1
 redistribute eigrp 1 subnets route-map SET-TAG
!
route-map SET-TAG permit 10
 set tag 1
```

```
R4
router eigrp 1
 redistribute ospf 1 metric 2000000 1 255 1 1500 route-map FILTER-TAG
!
route-map FILTER-TAG permit 10
 match tag 1
```

D)

```
R3
router ospf 1
 redistribute eigrp 1 subnets route-map SET-TAG
!
route-map SET-TAG deny 10
 set tag 1
```

```
R4
router eigrp 1
 redistribute ospf 1 metric 2000000 1 255 1 1500 route-map FILTER-TAG
!
route-map FILTER-TAG deny 10
 match tag 1
```

- A. Option A
- B. Option B
- C. Option C
- D. Option D

Answer: B

NEW QUESTION 17

Drag and drop the packet types from the left onto the correct descriptions on the right.

data plane packets	user-generated packets that are always forwarded by network devices to other end-station devices
control plane packets	network device generated or received packets that are used for the creation of the network itself
management plane packets	network device generated or received packets; packets that are used to operate the network
services plane packets	user-generated packets that are forwarded by network devices to other end-station devices, but that require higher priority than the normal traffic by the network devices

- A. Mastered
B. Not Mastered

Answer: A

Explanation:

data plane packets	data plane packets
control plane packets	control plane packets
management plane packets	management plane packets
services plane packets	services plane packets

NEW QUESTION 20

Refer to the exhibit.

```

Router#sh ip route ospf
<output omitted>
Gateway is last resort is not set

    10.0.0.0/24 is subnetted, 1 subnets
      o E2   10.0.0.0 [110/20] via 192.168.12.2, 00:00:10, Ethernet0/0
      o     192.168.3.0/24 [110/20] via 192.168.12.2, 00:00:50, Ethernet0/0
Router#

Router#show ip bgp
<output omitted>
      Network        Next Hop      Metric      LocPrf      Weight      Path
>*   192.168.1.1/32    0.0.0.0        0           32768       ?
>*   192.168.3.0      192.168.12.2   20          32768       ?
>*   192.168.12.0     0.0.0.0        0           32768       ?
Router#show running-config | section router bgp
router bgp 65000
 bgp log-neighbor-changes
 redistribute ospf 1
Router#

```

An engineer is trying to redistribute OSPF to BGP, but not all of the routes are redistributed. What is the reason for this issue?

- A. By default, only internal routes and external type 1 routes are redistributed into BGP
B. Only classful networks are redistributed from OSPF to BGP
C. BGP convergence is slow, so the route will eventually be present in the BGP table
D. By default, only internal OSPF routes are redistributed into BGP

Answer: A

NEW QUESTION 23

Refer to the exhibit.

```
Router#show running-config | include ip route
ip route 192.168.2.2 255.255.255.255 209.165.200.225 130
Router#show ip route

<output omitted>

Gateway of last resort is not set

    192.168.1.0/32 is subnetted, 1 subnets
C       192.168.1.1 is directly connected, Loopback0
    192.168.2.0/32 is subnetted, 1 subnets
O       192.168.2.2[110/11] via 192.168.12.2, 00:52:09, Ethernet0/0
    192.168.12.0/24 is variably subnetted, 2 subnets, 2 masks
C       192.168.12.0/24 is directly connected, Ethernet0/0
L       192.168.12.1/32 is directly connected, Ethernet0/0
    209.165.200.0/24 is variably subnetted, 2 subnets, 2 masks
C       209.165.200.0/24 is directly connected, Ethernet0/1
        209.165.200.226/32 is directly connected, Ethernet0/1
```

An engineer configures a static route on a router, but when the engineer checks the route to the destination, a different next hop is chosen. What is the reason for this?

- A. Dynamic routing protocols always have priority over static routes.
- B. The metric of the OSPF route is lower than the metric of the static route.
- C. The configured AD for the static route is higher than the AD of OSPF.
- D. The syntax of the static route is not valid, so the route is not considered.

Answer: C

NEW QUESTION 28

Refer to the exhibit.

```
R200#show ip bgp summary
BGP router identifier 10.1.1.1, local AS number 65000
BGP table version is 26, main routing table version 26
1 network entries using 132 bytes of memory
1 path entries using 52 bytes of memory
2/1 BGP path/bestpath attribute entries using 296 bytes of memory
0 BGP route-map cache entries using 0 bytes of memory
0 BGP filter-list cache entries using 0 bytes of memory
Bitfield cache entries: current 1 (at peak 2) using 28 bytes of memory
BGP using 508 total bytes of memory
BGP activity 24/23 prefixes, 24/23 paths, scan interval 60 secs
Neighbor      V    AS MsgRcvd MsgSent   TblVer  InQ  OutQ  Up/Down  State/PfxRcd
192.0.2.2      4 65100  20335    20329     0   0    0 00:02:04  Idle (PfxCt)
R200#
```

In which circumstance does the BGP neighbor remain in the idle condition?

- A. if prefixes are not received from the BGP peer
- B. if prefixes reach the maximum limit
- C. if a prefix list is applied on the inbound direction
- D. if prefixes exceed the maximum limit

Answer: D

NEW QUESTION 33

Refer to the exhibit.

```
Router#show access-lists
Standard IP access list 1
  10 permit 192.168.2.2 (1 match)
Router#
Router#show route-map
route-map RM-OSPF-DL, permit, sequence 10
Match clauses:
  ip address (access-lists): 1
Set clauses:
Policy routing matches: 0 packets, 0 bytes
Router#
Router#show running-config | section ospf
router ospf 1
 network 192.168.1.1 0.0.0.0 area 0
 network 192.168.12.0 0.0.0.255 area 0
 distribute-list route-map RM-OSPF-DL in
Router#
```

An engineer is trying to block the route to 192.168.2.2 from the routing table by using the configuration that is shown. The route is still present in the routing table as an OSPF route. Which action blocks the route?

- A. Use an extended access list instead of a standard access list.
- B. Change sequence 10 in the route-map command from permit to deny.
- C. Use a prefix list instead of an access list in the route map.
- D. Add this statement to the route map: route-map RM-OSPF-DL deny 20.

Answer: B

NEW QUESTION 36

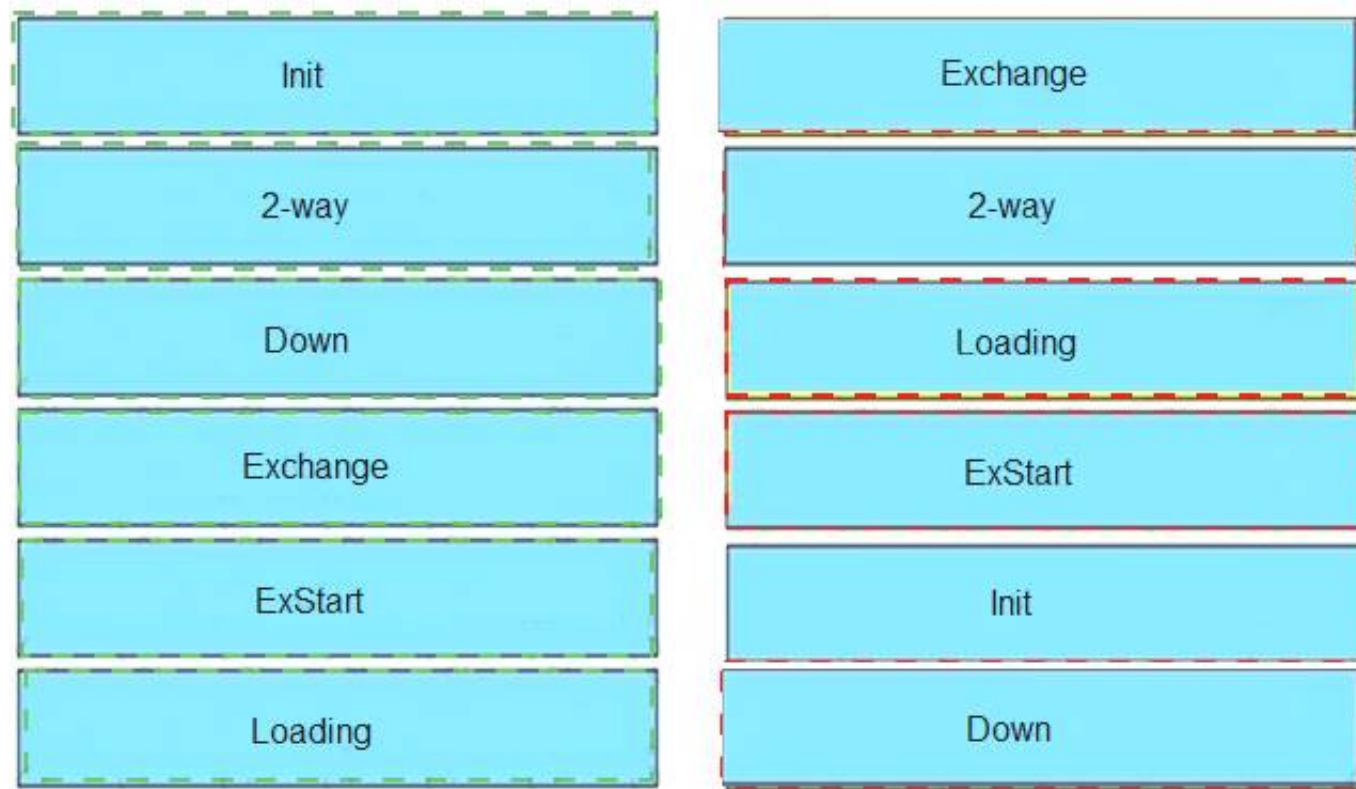
Drag and drop the OSPF adjacency states from the left onto the correct descriptions on the right.

Init	Each router compares the DBD packets that were received from the other router.
2-way	Routers exchange information with other routers in the multiaccess network.
Down	The neighboring router requests the other routers to send missing entries.
Exchange	The network has already elected a DR and a backup BDR.
ExStart	The OSPF router ID of the receiving router was not contained in the hello message.
Loading	No hellos have been received from a neighbor router.

- A. Mastered
- B. Not Mastered

Answer: A

Explanation:



NEW QUESTION 39

.....

Thank You for Trying Our Product

* 100% Pass or Money Back

All our products come with a 90-day Money Back Guarantee.

* One year free update

You can enjoy free update one year. 24x7 online support.

* Trusted by Millions

We currently serve more than 30,000,000 customers.

* Shop Securely

All transactions are protected by VeriSign!

100% Pass Your 300-410 Exam with Our Prep Materials Via below:

<https://www.certleader.com/300-410-dumps.html>