

Exam Questions PMP

Project Management Professional

<https://www.2passeasy.com/dumps/PMP/>



NEW QUESTION 1

Which process determines the risks that might affect the project?

- A. Perform Qualitative Risk Analysis
- B. Identify Risks
- C. Plan Risk Management
- D. Perform Quantitative Risk Analysis

Answer: B

NEW QUESTION 2

Plan Risk Management is the process of defining how to:

- A. Communicate identified risks to the project stakeholders.
- B. Conduct risk management activities for a project.
- C. Analyze the impact a specific risk may have on the project.
- D. Address unexpected risks that may occur during a project.

Answer: B

NEW QUESTION 3

What is the most accurate rough order of magnitude (ROM)?

- A. In the Initiation phase, the estimate is in the range of +/- 50%.
- B. In the Planning phase, the estimate is in the range of +/- 50%.
- C. In the Monitoring and Controlling phase, the estimate is in the range of +/- 15%.
- D. In the Closing phase, the estimate is in the range of +/- 15%.

Answer: A

NEW QUESTION 4

Which of the following forecasting methods uses historical data as the basis for estimating future outcomes?

- A. Time series
- B. Judgmental
- C. Econometric
- D. Simulation

Answer: A

NEW QUESTION 5

Which type of analysis is used as a general management technique within the Plan Procurements process?

- A. Risk assessment analysis
- B. Make or buy analysis
- C. Contract value analysis
- D. Cost impact analysis

Answer: B

NEW QUESTION 6

Every project creates a unique product, service, or result that may be:

- A. tangible
- B. targeted
- C. organized
- D. variable

Answer: A

NEW QUESTION 7

What entity is assigned various responsibilities related to the centralized and coordinated management of those projects under its domain?

- A. Project management office
- B. Project team office
- C. Executive sponsor office
- D. Program management office

Answer: A

NEW QUESTION 8

The ability to influence cost is greatest during which stages of the project?

- A. Early
- B. Middle
- C. Late
- D. Completion

Answer: A

NEW QUESTION 9

Which of the following is an input to the Perform Qualitative Risk Analysis process?

- A. Risk register
- B. Risk data quality assessment
- C. Risk categorization
- D. Risk urgency

Answer: A

NEW QUESTION 10

Which of the following is a project constraint?

- A. Twenty-five percent staff turnover is expected.
- B. The technology to be used is cutting-edge.
- C. Project leadership may change due to volatile political environment.
- D. The product is needed in 250 days.

Answer: D

NEW QUESTION 10

Which of the following is the primary output of the Identify Risks process?

- A. Risk management plan
- B. Risk register
- C. Change requests
- D. Risk response plan

Answer: B

NEW QUESTION 11

Which element does a project charter contain?

- A. Management reserves
- B. Work breakdown structure
- C. Stakeholder list
- D. Stakeholder register

Answer: C

NEW QUESTION 13

The project governance approach should be described in the:

- A. change control plan
- B. project scope
- C. statement of work
- D. project management plan

Answer: D

NEW QUESTION 18

Which process includes prioritizing risks for subsequent further analysis or action by assessing and combining their probability of occurrence and impact?

- A. Perform Qualitative Risk Analysis
- B. Perform Quantitative Risk Analysis
- C. Plan Risk Management
- D. Plan Risk Responses

Answer: A

NEW QUESTION 20

In which type of organizational structure are staff members grouped by specialty?

- A. Functional
- B. Projectized
- C. Matrix
- D. Balanced

Answer: A

NEW QUESTION 25

What is the definition of project plan execution?

- A. Integrating all planned activities
- B. Performing the activities included in the plan
- C. Developing and maintaining the plan
- D. Execution of deliverables

Answer: B

NEW QUESTION 30

Which type of managers do composite organizations involve?

- A. Functional managers and manager of project managers
- B. Functional managers only
- C. Project managers only
- D. Technical managers and project managers

Answer: A

NEW QUESTION 35

Which of the following tools and techniques is used in the Develop Project Team process?

- A. Acquisitions
- B. Organizational theories
- C. Team-building activities
- D. Virtual teams

Answer: C

NEW QUESTION 38

An input required to develop a preliminary project scope statement is:

- A. Organizational Structure
- B. Organizational Process Assets
- C. Organizational Matrix
- D. Organizational Breakdown Structures

Answer: B

NEW QUESTION 41

A primary function of a project management office is to support project managers in a variety of ways, including which of the following?

- A. Developing and managing project policies, procedures, templates, and other shared documentation
- B. Acting as the project sponsor by providing financial resources to the project
- C. Resolving issues and change management within a shared governance structure
- D. Aligning organizational/strategic direction that affects project and program goals

Answer: A

NEW QUESTION 46

Which of the following is an input to the Qualitative Risk Analysis process?

- A. Risk register
- B. Risk data quality assessment
- C. Risk categorization
- D. Risk urgency

Answer: A

NEW QUESTION 47

Who is responsible for determining which processes from the Process Groups will be employed and who will be performing them?

- A. Project sponsor and project manager
- B. Project sponsor and functional manager
- C. Project manager and project team
- D. Project team and functional manager

Answer: C

NEW QUESTION 52

The component of the human resource management plan that includes ways in which team members can obtain certifications that support their ability to benefit

the project is known as:

- A. recognition and rewards
- B. compliance
- C. staff acquisition
- D. training needs

Answer: D

NEW QUESTION 54

Which of the following project documents is an input to the Control Scope process?

- A. Vendor risk assessment diagram
- B. Risk register
- C. Requirements traceability matrix
- D. Area of responsibility summary

Answer: C

NEW QUESTION 57

What tool and technique is used to determine whether work and deliverables meet requirements and product acceptance criteria?

- A. Decomposition
- B. Benchmarking
- C. Inspection
- D. Checklist analysis

Answer: C

NEW QUESTION 61

Which input to the Manage Stakeholder Engagement process provides guidance on how stakeholders can best be involved in a project?

- A. Feedback analysis
- B. Stakeholder analysis
- C. Communication management plan
- D. Stakeholder management plan

Answer: D

NEW QUESTION 63

In which process is a project manager identified and given the authority to apply resources to project activities?

- A. Acquire Project Team
- B. Develop Project Management Plan
- C. Manage Project Execution
- D. Develop Project Charter

Answer: D

NEW QUESTION 67

Project contracts generally fall into which of the following three broad categories?

- A. Fixed-price, cost reimbursable, time and materials
- B. Make-or-buy, margin analysis, fixed-price
- C. Time and materials, fixed-price, margin analysis
- D. Make-or-buy, lump-sum, cost-plus-incentive

Answer: A

NEW QUESTION 68

High-level project risks are included in which document?

- A. Business case
- B. Risk breakdown structure
- C. Project charter
- D. Risk register

Answer: C

NEW QUESTION 69

A risk that arises as a direct result of implementing a risk response is called a:

- A. contingent risk
- B. residual risk
- C. potential risk

D. secondary risk

Answer: D

NEW QUESTION 71

A tool and technique used during the Collect Requirements process is:

- A. prototypes.
- B. expert judgment.
- C. alternatives identification.
- D. product analysis.

Answer: A

NEW QUESTION 75

The stakeholder register is an output of:

- A. Identify Stakeholders.
- B. Plan Stakeholder Management.
- C. Control Stakeholder Engagement.
- D. Manage Stakeholder Engagement.

Answer: A

NEW QUESTION 77

Prototype development may be used as a tool for which of the following risk response strategies?

- A. Avoid
- B. Accept
- C. Mitigate
- D. Exploit

Answer: C

NEW QUESTION 79

Power, urgency, and legitimacy are attributes of which stakeholder classification model?

- A. Salience
- B. Influence/impact
- C. Power/interest
- D. Power/influence

Answer: A

NEW QUESTION 81

Plan Communications Management develops an approach and plan for project communications based on stakeholders' needs and requirements and:

- A. Available organizational assets
- B. Project staff assignments
- C. Interpersonal skills
- D. Enterprise environmental factors

Answer: A

NEW QUESTION 85

The product scope description is used to:

- A. Gain stakeholders support for the project.
- B. Document the characteristics of the product.
- C. Describe the project in great detail.
- D. Formally authorize the project.

Answer: B

NEW QUESTION 86

A temporary endeavor that creates a unique product or service is called a:

- A. Project
- B. Plan
- C. Program
- D. Portfolio

Answer: A

NEW QUESTION 90

The methodology that combines scope, schedule, and resource measurements to assess project performance and progress is known as:

- A. Earned value management.
- B. Forecasting.
- C. Critical chain methodology.
- D. Critical path methodology.

Answer: A

NEW QUESTION 94

Which of the following processes includes prioritizing risks for subsequent further analysis or action by assessing and combining their probability of occurrence and impact?

- A. Qualitative risk analysis
- B. Quantitative risk analysis
- C. Risk management planning
- D. Risk response planning

Answer: A

NEW QUESTION 98

Which item is an example of personnel assessment?

- A. Resource calendar
- B. Tight matrix
- C. Team-building activity
- D. Focus group

Answer: D

NEW QUESTION 99

Which Process Group contains those processes performed to define a new project?

- A. Initiating
- B. Planning
- C. Executing
- D. Closing

Answer: A

NEW QUESTION 100

Which process uses occurrence probability and impact on project objectives to assess the priority of identified risks?

- A. Identify Risks
- B. Perform Qualitative Risk Analysis
- C. Plan Risk Management
- D. Perform Quantitative Risk Analysis

Answer: B

NEW QUESTION 103

Which enterprise environmental factors are considered during cost estimating?

- A. Marketplace conditions and commercial databases
- B. Marketplace conditions and company structure
- C. Commercial databases and company structure
- D. Existing human resources and market place conditions

Answer: A

NEW QUESTION 107

Which is an enterprise environmental factor?

- A. Marketplace conditions
- B. Policies and procedures
- C. Project files from previous projects
- D. Lessons learned from previous projects

Answer: A

NEW QUESTION 109

Which of the following investigates the likelihood that each specific risk will occur?

- A. Risk register

- B. Risk audits
- C. Risk urgency assessment
- D. Risk probability and impact assessment

Answer: D

NEW QUESTION 114

Which of the following is a strategy to deal with positive risks or opportunities?

- A. Mitigate
- B. Transfer
- C. Exploit
- D. Avoid

Answer: C

NEW QUESTION 117

Assigned risk ratings are based upon:

- A. Root cause analysis.
- B. Risk probability and impact assessment.
- C. Expert judgment.
- D. Revised stakeholders' tolerances.

Answer: B

NEW QUESTION 121

Which of the following correctly explains the term "progressive elaboration"?

- A. Changing project specifications continuously
- B. Elaborate tracking of the project progress
- C. Elaborate tracking of the project specifications with a change control system
- D. Project specifications becoming more explicit and detailed as the project progresses

Answer: D

NEW QUESTION 123

Which is an output of the Collect Requirements process?

- A. Requirements traceability matrix
- B. Project scope statement
- C. WBS dictionary
- D. Work performance measurements

Answer: A

NEW QUESTION 125

The risk shared between the buyer and seller is determined by the:

- A. assumption log.
- B. quality checklist.
- C. risk register.
- D. contract type.

Answer: D

NEW QUESTION 128

Which Control Scope input is compared to actual results to determine if corrective action is required for the project?

- A. Scope baseline
- B. Scope management plan
- C. Change management plan
- D. Cost baseline

Answer: A

NEW QUESTION 131

A stakeholder expresses a need not known to the project manager. The project manager most likely missed a step in which stakeholder management process?

- A. Plan Stakeholder Management
- B. Identify Stakeholders
- C. Manage Stakeholder Engagement
- D. Control Stakeholder Engagement

Answer: A

NEW QUESTION 132

Documented identification of a flaw in a project component together with a recommendation is termed a:

- A. corrective action.
- B. preventive action.
- C. non-conformance report,
- D. defect repair.

Answer: D

NEW QUESTION 136

Which of the following tools and techniques is used in the Verify Scope process?

- A. Inspection
- B. Variance analysis
- C. Expert judgment
- D. Decomposition

Answer: A

NEW QUESTION 137

Projects are separated into phases or subprojects; these phases include:

- A. feasibility study, concept development, design, and prototype.
- B. initiate, plan, execute, and monitor.
- C. Develop Charter, Define Activities, Manage Stakeholder Expectations, and Report Performance.
- D. Identify Stakeholders, develop concept, build, and test.

Answer: A

NEW QUESTION 139

Prioritizing risks for further analysis or action by assessing and combining their probability of occurrence and impact takes place in which process?

- A. Monitor and Control Risks
- B. Plan Risk Management
- C. Perform Qualitative Risk Analysis
- D. Perform Quantitative Risk Analysis

Answer: C

NEW QUESTION 141

Which of the following is an output of the Distribute Information process?

- A. Project calendar
- B. Communications management plan
- C. Organizational process assets updates
- D. Project document updates

Answer: C

NEW QUESTION 145

Which is a tool or technique used in scope definition?

- A. Templates, forms, and standards
- B. Change requests
- C. Stakeholder analysis
- D. Project assumptions

Answer: C

NEW QUESTION 148

Which statement is true about the project management body of knowledge?

- A. Recognized by every project manager
- B. Constantly evolving
- C. The sum of all knowledge related to project management
- D. A sum of knowledge that should be applied on every project

Answer: B

NEW QUESTION 149

When a project is undertaken to reduce defects in a product or service, the objective of the project is to create a/an:

- A. improvement

- B. program
- C. result
- D. portfolio

Answer: A

NEW QUESTION 154

Which of the following response strategies are appropriate for negative risks or threats?

- A. Share, Accept, Transfer, or Mitigate
- B. Exploit, Enhance, Share, or Accept
- C. Mitigate, Share, Avoid, or Accept
- D. Avoid, Mitigate, Transfer, or Accept

Answer: D

NEW QUESTION 156

Most experienced project managers know that:

- A. every project requires the use of all processes in the PMBOK® Guide.
- B. there is no single way to manage a project.
- C. project management techniques are risk free.
- D. there is only one way to manage projects successfully.

Answer: B

NEW QUESTION 159

In which type of contract are the performance targets established at the onset and the final contract price determined after completion of all work based on the sellers performance?

- A. Firm-Fixed-Price (FFP)
- B. Fixed Price with Economic Price Adjustments (FP-EPA)
- C. Fixed-Price-Incentive-Fee (FPIF)
- D. Cost Plus Fixed Fee (CPFF)

Answer: C

NEW QUESTION 164

Which stakeholder approves a project's result?

- A. Customer
- B. Sponsor
- C. Seller
- D. Functional manager

Answer: A

NEW QUESTION 168

Which input to Collect Requirements is used to identify stakeholders who can provide information on requirements?

- A. Stakeholder register
- B. Scope management plan
- C. Stakeholder management plan
- D. Project charter

Answer: A

NEW QUESTION 172

Which of the following is a narrative description of products, services, or results to be delivered by a project?

- A. Project statement of work
- B. Business case
- C. Accepted deliverable
- D. Work performance information

Answer: A

NEW QUESTION 173

Which is an input to the Scope Verification Process?

- A. Performance report
- B. Work breakdown structure
- C. Requested changes
- D. Project scope statement

Answer: D

NEW QUESTION 177

Scope verification is PRIMARILY concerned with which of the following?

- A. Acceptance of the work deliverables.
- B. Accuracy of the work deliverables.
- C. Approval of the scope statement.
- D. Accuracy of the work breakdown structure.

Answer: A

NEW QUESTION 181

The probability and impact matrix is primarily used to:

- A. Quantify risk issues for trends during a quality audit.
- B. Develop a risk register for risk planning.
- C. Evaluate each risk's importance and priority during Perform Qualitative Risk Analysis.
- D. Define risk and compare impacts during Perform Quantitative Risk Analysis.

Answer: C

NEW QUESTION 185

Which group creativity technique asks a selected group of experts to answer questionnaires and provide feedback regarding the responses from each round of requirements gathering?

- A. The Delphi technique
- B. Nominal group technique
- C. Affinity diagram
- D. Brainstorming

Answer: A

NEW QUESTION 189

A projects purpose or justification, measurable project objectives and related success criteria, a summary milestone schedule, and a summary budget are all components of which document?

- A. Work breakdown structure
- B. Requirements document
- C. Project charter
- D. Project management plan

Answer: C

NEW QUESTION 194

At which point of the project is the uncertainty the highest and the risk of failing the greatest?

- A. Final phase of the project
- B. Start of the project
- C. End of the project
- D. Midpoint of the project

Answer: B

NEW QUESTION 199

The scope of a project cannot be defined without some basic understanding of how to create the specified:

- A. objectives
- B. schedule
- C. product
- D. approach

Answer: C

NEW QUESTION 201

Which of the following terms indicates a deliverable-oriented hierarchical decomposition of the project work?

- A. WBS directory
- B. Activity list
- C. WBS
- D. Project schedule

Answer: C

NEW QUESTION 203

What is project management?

- A. A logical grouping of project management inputs, outputs, tools, and techniques
- B. Applying knowledge, skills, tools, and techniques to project activities to meet the project requirements
- C. Launching a process that can result in the authorization of a new project
- D. A formal, approved document that defines how the project is executed, monitored, and controlled

Answer: B

NEW QUESTION 206

Which activity is an input to the select sellers process?

- A. Organizational process assets
- B. Resource availability
- C. Change control process
- D. Team performance assessment

Answer: A

NEW QUESTION 208

An output of the Manage Stakeholder Engagement process is:

- A. change requests
- B. enterprise environmental factors
- C. the stakeholder management plan
- D. the change log

Answer: A

NEW QUESTION 212

Stakeholder management strategy is an output of:

- A. Plan Communications.
- B. Distribute Information.
- C. Report Performance.
- D. Identify Stakeholders.

Answer: D

NEW QUESTION 213

For any given project, the project manager, in collaboration with the project team, is responsible for:

- A. Applying knowledge, skills, and processes uniformly.
- B. Informing the project sponsor about which processes are going to be used.
- C. Tailoring the processes to fit the abilities of the organization.
- D. Determining which particular processes are appropriate.

Answer: D

NEW QUESTION 217

Which basic quality tool explains a change in the dependent variable in relationship to a change observed in the corresponding independent variable?

- A. Cause-and-effect diagram
- B. Histogram
- C. Control chart
- D. Scatter diagram

Answer: D

NEW QUESTION 220

What characteristic do project and operational work share in common?

- A. Performed by systems
- B. Constrained by limited resources
- C. Repetitiveness
- D. Uniqueness

Answer: B

NEW QUESTION 221

The scope management plan is a subsidiary of which project document?

- A. Schedule management plan
- B. Project management plan

- C. Quality management plan
- D. Resource management plan

Answer: B

NEW QUESTION 225

Which type of agreement is legal, contractual, and between two or more entities to form a partnership, joint venture, or some other arrangement as defined by the parties?

- A. Teaming
- B. Collective bargaining
- C. Sharing
- D. Working

Answer: A

NEW QUESTION 229

Which project risk listed in the table below is most likely to occur?

Project Risks	Probability	Impact
Risk 1	L	M
Risk 2	H	H
Risk 3	L	L
Risk 4	M	L

- A. 1
- B. 2
- C. 3
- D. 4

Answer: B

NEW QUESTION 234

Which of the following is an input to the Develop Project Charter process?

- A. Work performance information
- B. Project management plan
- C. Business case
- D. Change requests

Answer: C

NEW QUESTION 236

Which document describes the necessary information to determine if a project is worth the required investment?

- A. Cost baseline
- B. Service level agreement
- C. Memorandum of understanding
- D. Business case

Answer: D

NEW QUESTION 240

Which Collect Requirements output links the product requirements to the deliverables that satisfy them?

- A. Requirements documentation
- B. Requirements traceability matrix
- C. Project management plan updates
- D. Project documents updates

Answer: B

NEW QUESTION 241

Which of the following is an output of the Define Activities process?

- A. Activity list
- B. Project plan
- C. Activity duration estimates
- D. Project schedule

Answer: A

NEW QUESTION 243

The creation of an internet site to engage stakeholders on a project is an example of which type of communication?

- A. Push
- B. Pull
- C. Interactive
- D. Iterative

Answer: B

NEW QUESTION 244

Which of the following is a tool or technique used in the Acquire Project Team process?

- A. Networking
- B. Training
- C. Negotiation
- D. Issue log

Answer: C

NEW QUESTION 247

Technical capability, past performance, and intellectual property rights are examples of:

- A. performance measurement criteria
- B. source selection criteria
- C. product acceptance criteria
- D. phase exit criteria

Answer: B

NEW QUESTION 249

The organization's perceived balance between risk taking and risk avoidance is reflected in the risk:

- A. Responses
- B. Appetite
- C. Tolerance
- D. Attitude

Answer: A

NEW QUESTION 254

Which process uses occurrence probability and impact on project objectives to assess the priority of identified risks?

- A. Risk identification
- B. Qualitative risk analysis
- C. Risk management planning
- D. Quantitative risk analysis

Answer: B

NEW QUESTION 258

Which of the following methods is a project selection technique?

- A. Flowcharting
- B. Earned value
- C. Cost-benefit analysis
- D. Pareto analysis

Answer: C

NEW QUESTION 261

The degree, amount, or volume of risk that an organization or individual will withstand is called risk:

- A. appetite

- B. tolerance
- C. threshold
- D. management

Answer: B

NEW QUESTION 265

An input required in Define Scope is an organizational:

- A. structure.
- B. process asset.
- C. matrix.
- D. breakdown structure.

Answer: B

NEW QUESTION 266

An electronics firm authorizes a new project to develop a faster, cheaper, and smaller laptop after improvements in the industry and electronics technology. With which of the following strategic considerations is this project mainly concerned?

- A. Customer request
- B. Market demand
- C. Technological advance
- D. Strategic opportunity

Answer: C

NEW QUESTION 270

In which Knowledge Area is the project charter developed?

- A. Project Cost Management
- B. Project Scope Management
- C. Project Time Management
- D. Project Integration Management

Answer: D

NEW QUESTION 271

Which process is conducted from project inception through completion and is ultimately the responsibility of the project manager?

- A. Control Quality
- B. Monitor and Control Project Work
- C. Control Scope
- D. Perform Integrated Change Control

Answer: D

NEW QUESTION 272

The Cost Management processes and their associated tools and techniques are usually selected during which of the following?

- A. Project finance management
- B. Project cost estimation
- C. Project life cycle definition
- D. Project plan development

Answer: C

NEW QUESTION 273

As part of a mid-project evaluation, the project sponsor has asked for a forecast of the total project cost. What should be used to calculate the forecast?

- A. BAC
- B. EAC
- C. ETC
- D. WBS

Answer: B

NEW QUESTION 274

Which of the following is the process of identifying the specific actions to be performed to produce the project deliverables?

- A. Estimate Activity Durations
- B. Sequence Activities
- C. Define Activities
- D. Activity Attributes

Answer: C

NEW QUESTION 279

Who MUST know when a risk event occurs so that a response can be implemented?

- A. Customers
- B. Project sponsors
- C. Project management team
- D. Insurance claims department

Answer: C

NEW QUESTION 280

Stakeholder satisfaction should be managed as a key project:

- A. Benefit
- B. Initiative
- C. Objective
- D. Process

Answer: C

NEW QUESTION 282

Which of the following documents allows the project manager to assess risks that may require near term action?

- A. Probability and impact matrix
- B. Contingency analysis report
- C. Risk urgency assessment
- D. Rolling wave plan

Answer: C

NEW QUESTION 283

An input to the Identify Risks process is the:

- A. Risk register.
- B. Risk probability and impact assessment.
- C. Communications management plan.
- D. Risk management plan.

Answer: D

NEW QUESTION 287

Which tools or techniques will the project manager use for developing the project team?

- A. Negotiation
- B. Roles and responsibilities
- C. Recognition and rewards
- D. Prizing and promoting

Answer: C

NEW QUESTION 292

One of the key benefits of the Plan Human Resource Management process is that it:

- A. outlines team selection guidelines and team member responsibilities.
- B. establishes project roles and responsibilities.
- C. improves teamwork, interpersonal skills, and competencies.
- D. provides an accurate appraisal of team member performance.

Answer: B

NEW QUESTION 293

An input to the Create WBS process is a:

- A. project charter.
- B. stakeholder register.
- C. project scope statement.
- D. requirements traceability matrix.

Answer: C

NEW QUESTION 294

An input to the Plan Cost Management process is:

- A. Cost estimates.
- B. Resource calendars,
- C. The project charter,
- D. The risk register.

Answer: C

NEW QUESTION 295

Which of the following is a tool and technique for Estimate Activity Durations?

- A. Parametric estimating
- B. Monte Carlo analysis
- C. Alternatives analysis
- D. Bottom-up estimating

Answer: A

NEW QUESTION 297

During project selection, which factor is most important?

- A. Types of constraints
- B. Internal business needs
- C. Budget
- D. Schedule

Answer: B

NEW QUESTION 301

What is an objective of the Develop Project Team process?

- A. Feelings of trust and improved cohesiveness
- B. Ground rules for interaction
- C. Enhanced resource availability
- D. Functional managers becoming more involved

Answer: A

NEW QUESTION 305

The specific technique for identifying a problem, discovering the causes that lead to it, and developing preventive actions is:

- A. Inspection
- B. Use of quality checklists
- C. Root cause analysis
- D. Use of matrix diagrams

Answer: C

NEW QUESTION 307

A project manager is appointed full-time to a project and is given full-time administrative staff and full-time project team members. This situation describes which type of organizational structure?

- A. Projectized
- B. Weak matrix
- C. Functional
- D. Balanced matrix

Answer: A

NEW QUESTION 312

Projects can be divided into phases to provide better management control. Collectively, what are these phases known as?

- A. Complete project phase
- B. Project life
- C. The project life cycle
- D. Project cycle

Answer: C

NEW QUESTION 313

Which of the following is used to illustrate the connections between work packages or activities and project team members?

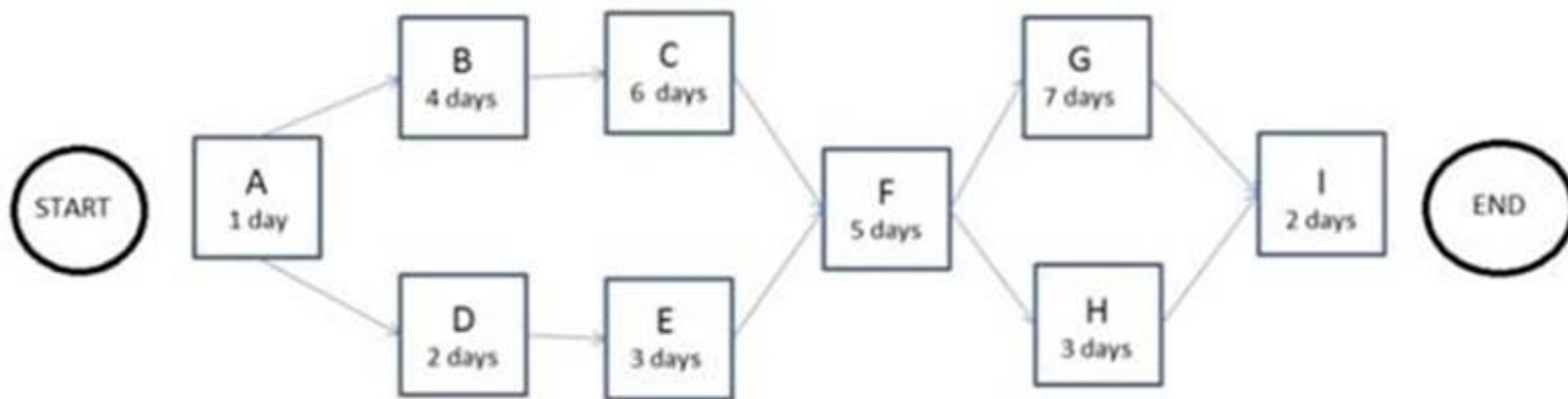
- A. Hierarchical-type charts (HTC)
- B. Organizational breakdown structure (OBS)
- C. Work breakdown structure (WBS)

D. Responsibility assignment matrix (RAM)

Answer: D

NEW QUESTION 317

The following is a network diagram for a project.



The free float for Activity E is how many days?

- A. 2
- B. 3
- C. 5
- D. 8

Answer: C

NEW QUESTION 320

Which process involves the creation of a document that provides the project manager with the authority to apply resources to a project?

- A. Define Activities
- B. Direct and Manage Project Work
- C. Develop Project Management Plan
- D. Develop Project Charter

Answer: D

NEW QUESTION 321

When an activity cannot be estimated with a reasonable degree of confidence, the work within the activity is decomposed into more detail using which type of estimating?

- A. Bottom-up
- B. Parametric
- C. Analogous
- D. Three-point

Answer: A

NEW QUESTION 323

The only Process Group that comprises processes that typically occur from the beginning to the end of the project life cycle is:

- A. Planning.
- B. Executing,
- C. Monitoring and Controlling.
- D. Closing.

Answer: A

NEW QUESTION 328

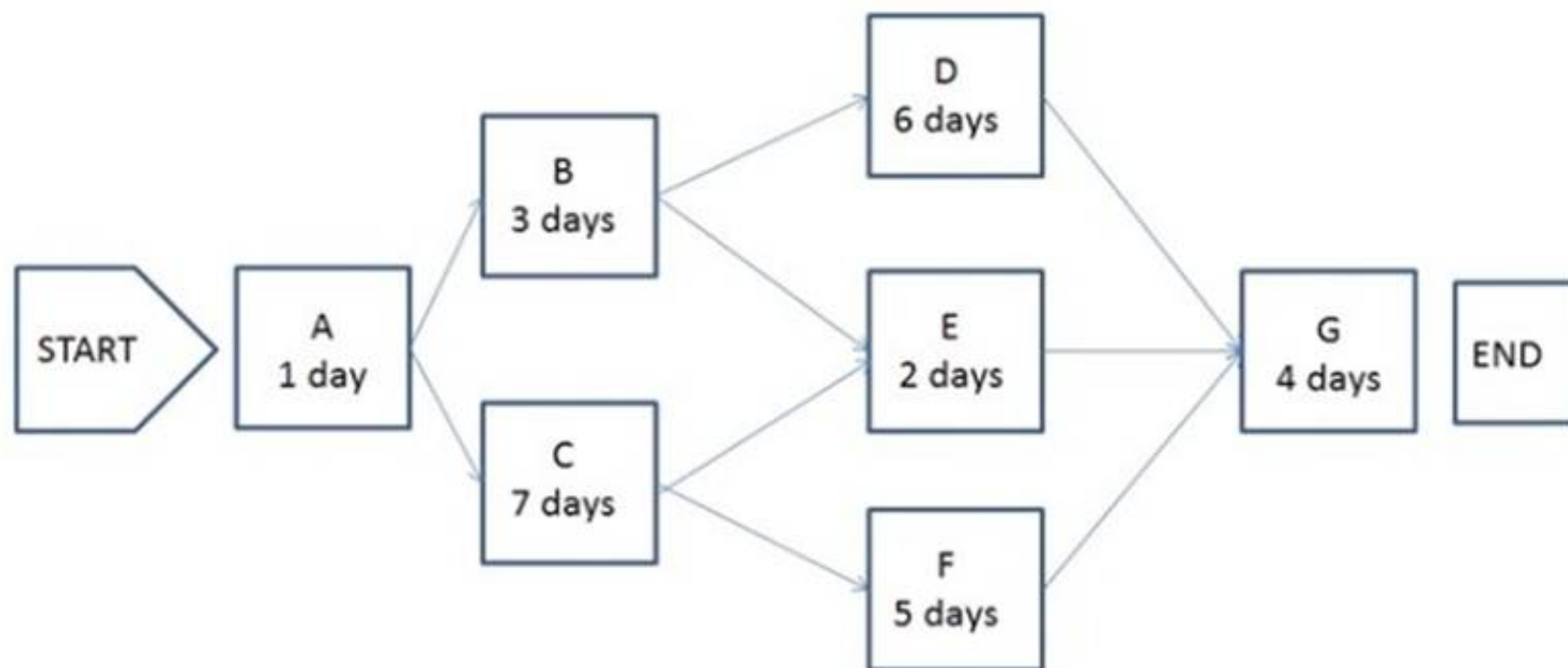
Which quality planning tools and techniques are used to visually identify logical groupings based on natural relationships?

- A. Force field diagrams
- B. Cause-and-effect diagrams
- C. Affinity diagrams
- D. Nominal group techniques

Answer: C

NEW QUESTION 333

The following is a network diagram for a project.



The critical path for the project is how many days in duration?

- A. 10
- B. 12
- C. 14
- D. 17

Answer: D

NEW QUESTION 335

Which type of chart is a graphic representation of a process showing the relationships among process steps?

- A. Control
- B. Bar
- C. Flow
- D. Pareto

Answer: C

NEW QUESTION 340

Which Project Time Management process includes bottom-up estimating as a tool or technique?

- A. Estimate Activity Resources
- B. Sequence Activities
- C. Estimate Activity Durations
- D. Develop Schedule

Answer: A

NEW QUESTION 342

Which of the following lists contain processes that are included within Project Procurement Management?

- A. Plan purchases and acquisitions, plan contracting, request seller responses, select sellers
- B. Plan purchases and acquisitions, request seller responses, select sellers, schedule control
- C. Plan purchases and acquisitions, acquire project team, request seller responses, select sellers
- D. Plan purchases and acquisitions, acquire project team, contract approval, select sellers

Answer: A

NEW QUESTION 343

Which tool is used to develop technical details within the project management plan?

- A. Expert Judgment
- B. Project Management Methodology
- C. Project Management Information
- D. Project Selection Methods

Answer: A

NEW QUESTION 345

Project Scope Management is primarily concerned with:

- A. Developing a detailed description of the project and product.
- B. Determining how requirements will be analyzed, documented, and managed.
- C. Defining and controlling what is and is not included in the project.
- D. Formalizing acceptance of the completed project deliverables.

Answer: C

NEW QUESTION 346

The milestone list is an input to which process from the Planning Process Group?

- A. Define Activities
- B. Estimate Activity Durations
- C. Estimate Activity Resources
- D. Sequence Activities

Answer: D

NEW QUESTION 348

The staffing management plan is part of the:

- A. organizational process assets.
- B. resource calendar.
- C. human resource plan.
- D. Develop Project Team process.

Answer: C

NEW QUESTION 351

An example of a group decision-making technique is:

- A. Nominal group technique.
- B. Majority.
- C. Affinity diagram.
- D. Multi-criteria decision analysis.

Answer: B

NEW QUESTION 353

Which tool or technique is used in the Plan Scope Management process?

- A. Document analysis
- B. Observations
- C. Product analysis
- D. Expert judgment

Answer: D

NEW QUESTION 355

A contract management plan is a subsidiary of what other type of plan?

- A. Resource plan
- B. Project management plan
- C. Cost control plan
- D. Expected monetary value plan

Answer: B

NEW QUESTION 356

Which of the following is an output of Define Scope?

- A. Project scope statement
- B. Project charter
- C. Project plan
- D. Project schedule

Answer: A

NEW QUESTION 359

In the Define Activities process, the schedule management plan is used to:

- A. Capture the lessons learned from other projects for comparison.
- B. Contain the standard activity list.
- C. Document and support the project change requests.
- D. Prescribe the level of detail needed to manage the work.

Answer: D

NEW QUESTION 362

Which quality tool may prove useful in understanding and estimating the cost of quality in a process?

- A. Checksheets
- B. Histograms
- C. Flowcharts
- D. Control charts

Answer: C

NEW QUESTION 363

Project deliverables that have been completed and checked for correctness through the Control Quality process are known as:

- A. Verified deliverables.
- B. Validated deliverables.
- C. Acceptance criteria.
- D. Activity resource requirements.

Answer: A

NEW QUESTION 366

Which component of the human resource management plan describes when and how project team members are acquired and how long they will be needed?

- A. Resource breakdown structure
- B. Staffing management plan
- C. Project organizational chart
- D. Scope management plan

Answer: B

NEW QUESTION 367

Which of the following is an output of the Information Distribution Process?

- A. Project calendar
- B. Communication management plan
- C. Requested changes
- D. Communication requirement plan

Answer: C

NEW QUESTION 368

The progressive detailing of the project management plan is called:

- A. expert judgment.
- B. rolling wave planning.
- C. work performance information.
- D. specification.

Answer: B

NEW QUESTION 370

Risk categorization is a tool or technique used in which process?

- A. Plan Risk Responses
- B. Plan Risk Management
- C. Perform Qualitative Risk Analysis
- D. Perform Quantitative Risk Analysis

Answer: C

NEW QUESTION 371

Which of the following is an input to Develop Human Resource Plan?

- A. Team performance assessment
- B. Roles and responsibilities
- C. Staffing management plan
- D. Enterprise environmental factors

Answer: D

NEW QUESTION 375

The scope management plan and scope baseline are contained in:

- A. organizational process assets
- B. a requirements traceability matrix
- C. the project charter
- D. the project management plan

Answer: D

NEW QUESTION 377

Enterprise environmental factors are an input to which process?

- A. Control Scope
- B. Define Scope
- C. Plan Scope Management
- D. Collect Requirements

Answer: C

NEW QUESTION 379

A strengths, weaknesses, opportunities, and threats (SWOT) analysis is a tool or technique used in which process?

- A. Identify Risks
- B. Control Risks
- C. Perform Quantitative Risk Analysis
- D. Perform Qualitative Risk Analysis

Answer: A

NEW QUESTION 383

The item that provides more detailed descriptions of the components in the work breakdown structure (WBS) is called a WBS:

- A. dictionary.
- B. chart.
- C. report.
- D. register.

Answer: A

NEW QUESTION 388

A required input for Create WBS is a project:

- A. quality plan.
- B. schedule network.
- C. management document update.
- D. scope statement.

Answer: D

NEW QUESTION 390

A work package has been scheduled to cost \$1,000 to complete and was to be finished today. As of today, the actual expenditure is \$1,200 and approximately half of the work has been completed. What is the cost variance?

- A. -700
- B. -200
- C. 200
- D. 500

Answer: A

NEW QUESTION 391

When should quality planning be performed?

- A. While developing the project charter
- B. In parallel with the other planning processes
- C. As part of a detailed risk analysis
- D. As a separate step from the other planning processes

Answer: B

NEW QUESTION 395

The planned work contained in the lowest level of work breakdown structure (WBS) components is known as:

- A. Work packages.
- B. Accepted deliverables.
- C. The WBS dictionary.
- D. The scope baseline.

Answer: A

NEW QUESTION 399

During which process group is the quality policy determined?

- A. Initiating
- B. Executing
- C. Planning
- D. Controlling

Answer: C

NEW QUESTION 400

Which is an example of Administer Procurements?

- A. Negotiating the contract
- B. Authorizing contractor work
- C. Developing the statement of work
- D. Establishing evaluation criteria

Answer: B

NEW QUESTION 401

The process of estimating the type and quantity of material, human resources, equipment, or supplies required to perform each activity is known as:

- A. Collect Requirements.
- B. Conduct Procurements.
- C. Estimate Activity Durations.
- D. Estimate Activity Resources.

Answer: D

NEW QUESTION 405

You are assigned to implement the project control plan. What should you do to ensure the plan is effective and current?

- A. Perform periodic project performance reviews.
- B. Identify quality project standards.
- C. Follow ISO 9000 quality standards.
- D. Complete the quality control checklist.

Answer: A

NEW QUESTION 409

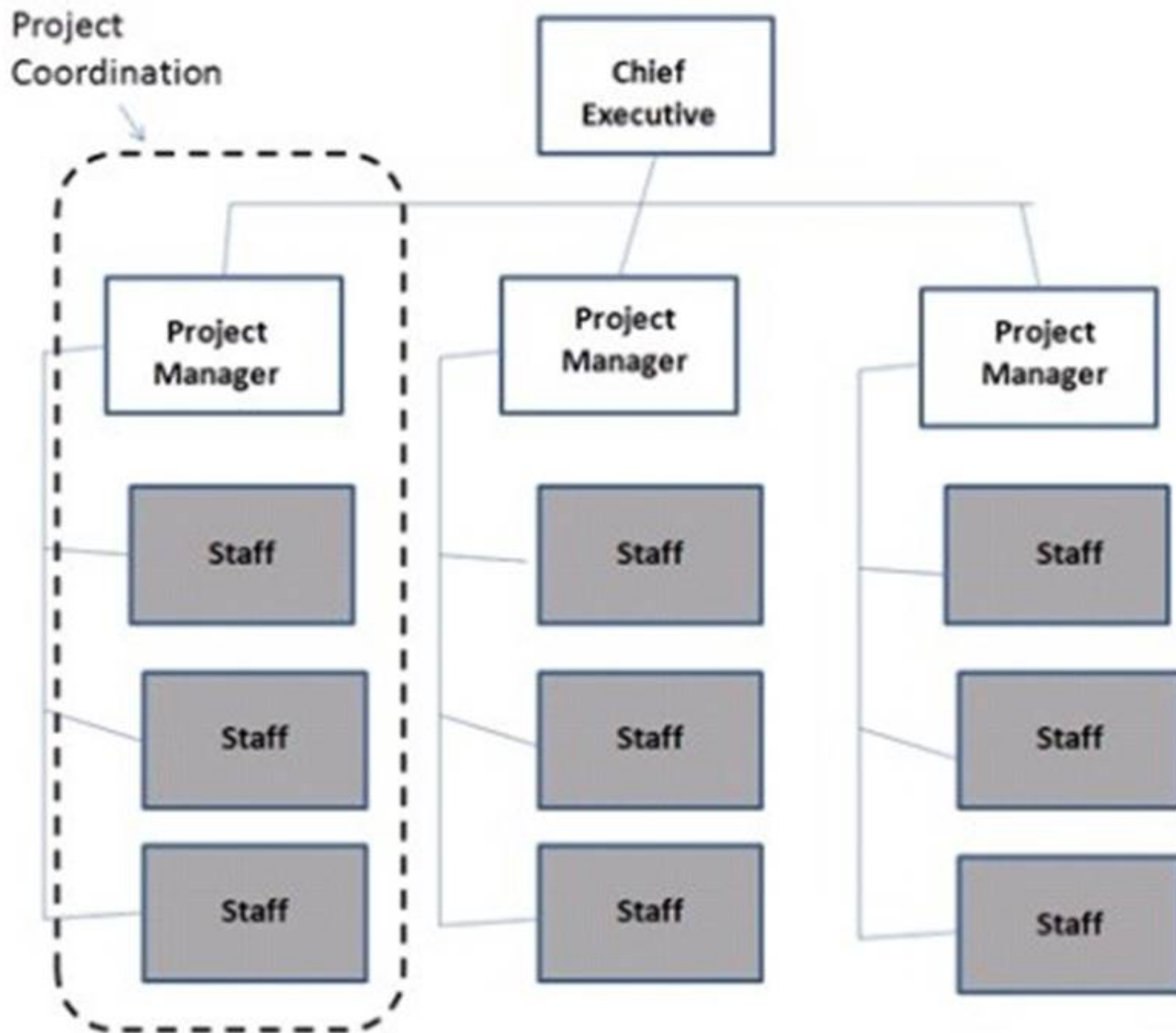
Which of the following statements correctly characterizes pull communication?

- A. It includes letters, memos, reports, emails, and faxes.
- B. It requires recipients to access communication content at their own discretion.
- C. It is the most efficient way to ensure a common understanding among all participants.
- D. It is primarily used when the volume of information to be transferred is minimal.

Answer: B

NEW QUESTION 414

Which type of organizational structure is displayed in the diagram provided?



- A. Balanced matrix
- B. Projectized
- C. Strong matrix
- D. Functional

Answer: B

NEW QUESTION 415

What defines the portion of work included in a contract for items being purchased or acquired?

- A. Procurement management plan
- B. Evaluation criteria
- C. Work Breakdown Structure (WBS)
- D. Contract Statement of Work (SOW)

Answer: D

NEW QUESTION 420

Which tool and technique of quality planning involves comparing actual or planned practices to those of other projects to generate ideas for improvement and provide a basis by which to measure performance?

- A. Histogram
- B. Quality audits
- C. Benchmarking
- D. Performance measurement analysis

Answer: C

NEW QUESTION 424

Inputs to the Plan Schedule Management process include:

- A. Organizational process assets and the project charter,
- B. Enterprise environmental factors and schedule tools.
- C. Time tables and Pareto diagrams.
- D. Activity attributes and resource calendars.

Answer: A

NEW QUESTION 429

Which type of analysis is used to develop the communications management plan?

- A. Product
- B. Cost benefit
- C. Stakeholder
- D. Research

Answer: C

NEW QUESTION 430

A special type of bar chart used in sensitivity analysis for comparing the relative importance of the variables is called a:

- A. triangular distribution
- B. tornado diagram
- C. beta distribution
- D. fishbone diagram

Answer: B

NEW QUESTION 431

Which document includes the project scope, major deliverables, assumptions, and constraints?

- A. Project charter
- B. Project scope statement
- C. Scope management plan
- D. Project document updates

Answer: B

NEW QUESTION 432

Create WBS is part of which of the following Knowledge Areas?

- A. Project Integration Management
- B. Project Scope Management
- C. Project Time Management
- D. Project Cost Management

Answer: B

NEW QUESTION 433

In the basic communication model, which term refers to the method that is used to convey the message?

- A. Decode
- B. Encode
- C. Medium
- D. Noise

Answer: C

NEW QUESTION 435

A tool and technique used during the Create WBS process is:

- A. decomposition
- B. expert judgment
- C. inspection
- D. variance analysis

Answer: A

NEW QUESTION 438

Who, along with the project manager, is supposed to direct the performance of the planned project activities and manage the various technical and organizational interfaces that exist within the project?

- A. The customer and functional managers
- B. The risk owners and stakeholders
- C. The sponsors and stakeholders
- D. The project management team

Answer: D

NEW QUESTION 441

Portfolio Management is management of:

- A. a project by dividing the project into more manageable sub-projects.
- B. a project by utilizing a portfolio of general management skills such as planning, organizing, staffing, executing, and controlling.
- C. all projects undertaken by a company.
- D. a collection of projects that are grouped together to facilitate effective management and meet strategic business objectives.

Answer: D

NEW QUESTION 445

Which of the following are placed at selected points in the work breakdown structure (WBS) for performance measurement?

- A. Control accounts
- B. Milestones
- C. Management points
- D. Measurement points

Answer: A

NEW QUESTION 450

Which process determines the risks that may affect the project and documents their characteristics?

- A. Control Risks
- B. Plan Risk Management
- C. Plan Risk Responses
- D. Identify Risks

Answer: D

NEW QUESTION 454

Funding limit reconciliation is a tool and technique of which Project Cost Management process?

- A. Estimate Costs
- B. Control Costs
- C. Plan Cost Management
- D. Determine Budget

Answer: D

NEW QUESTION 458

Which stakeholder classification model groups stakeholders based on their level of authority and their active involvement in the project?

- A. Power/influence grid
- B. Power/interest grid
- C. Influence/impact grid
- D. Salience model

Answer: A

NEW QUESTION 460

Changes to formally controlled documentation, plans, etc. to reflect modified or additional ideas or content are known as:

- A. updates.
- B. defect repairs.
- C. preventive actions.
- D. corrective actions.

Answer: A

NEW QUESTION 465

What is the function of a Project Management Office (PMO)?

- A. To focus on the coordinated planning, prioritization, and execution of projects and subprojects that are tied to the parent organizations or the client's overall business objectives.
- B. To coordinate and manage the procurement of projects relevant to the parent organization's business objectives and to administer the project charters accordingly.
- C. To administer performance reviews for the project manager and the project team members and to handle any personnel and payroll issues.
- D. To focus on the specified project objectives and to manage the scope, schedule, cost, and quality of the work packages.

Answer: A

NEW QUESTION 466

While preparing the project management plan on a weekly basis, the project manager indicates the intention to provide an issues report to the staff via e-mail. In which part of the plan will this type of information be included?

- A. Communications management plan
- B. Human resource plan
- C. Quality management plan
- D. Procurement management plan

Answer: A

NEW QUESTION 467

Which risk management strategy seeks to eliminate the uncertainty associated with a particular upside risk by ensuring that the opportunity is realized?

- A. Enhance
- B. Share
- C. Exploit
- D. Accept

Answer: C

NEW QUESTION 471

Grouping the stakeholders based on their level of authority and their level of concern regarding project outcomes describes which classification model for stakeholder analysis?

- A. Influence/impact grid
- B. Power/influence grid
- C. Power/interest grid
- D. Salience model

Answer: C

NEW QUESTION 474

What is the responsibility of the project manager and the functional manager respectively?

- A. Oversight for an administrative area; a facet of the core business
- B. Achieving the project objectives; providing management oversight for an administrative area
- C. A facet of the core business; achieving the project objectives
- D. Both are responsible for achieving the project objectives.

Answer: B

NEW QUESTION 479

When is a Salience Model used?

- A. In a work breakdown structure (WBS)
- B. During quality assurance
- C. In stakeholder analysis
- D. During quality control (QC)

Answer: C

NEW QUESTION 481

Which document defines how a project is executed, monitored and controlled, and closed?

- A. Strategic plan
- B. Project charter
- C. Project management plan
- D. Service level agreement

Answer: C

NEW QUESTION 484

Which Project Management Process Group includes Collect Requirements, Define Activities, Sequence Activities, Perform Qualitative Risk Analysis, and Perform Quantitative Risk Analysis?

- A. Initiating
- B. Monitoring and Controlling
- C. Planning
- D. Closing

Answer: C

NEW QUESTION 485

The process of identifying and documenting the specific actions to be performed to produce the project deliverables is known as:

- A. Define Activities.
- B. Sequence Activities.
- C. Define Scope.

D. Control Schedule.

Answer: A

NEW QUESTION 486

The process of identifying the stakeholders' information needs is completed during:

- A. Plan Communications.
- B. Manage Stakeholder Expectations.
- C. Stakeholder Analysis.
- D. Identify Stakeholders.

Answer: A

NEW QUESTION 489

Sending letters, memos, reports, emails, and faxes to share information is an example of which type of communication?

- A. Direct
- B. Interactive
- C. Pull
- D. Push

Answer: D

NEW QUESTION 490

The process of developing a detailed description of the project and product is known as:

- A. Create WBS.
- B. Verify Scope.
- C. Collect Requirements.
- D. Define Scope.

Answer: D

NEW QUESTION 495

Which of following could be organizational process assets?

- A. Historical information
- B. Industry standards
- C. Organization infrastructure
- D. Marketplace conditions

Answer: A

NEW QUESTION 498

Which of the following processes are within the Initiating Process Group?

- A. Develop Project Management Plan and Identify Stakeholders
- B. Develop Project Management Plan and Plan Communications
- C. Develop Project Charter and Identify Stakeholders
- D. Develop Project Charter and Develop Project Scope Statement

Answer: C

NEW QUESTION 499

Which of the following are examples of interactive communication?

- A. Intranet sites
- B. Voice mails
- C. Video conferences
- D. Press releases

Answer: C

NEW QUESTION 503

A risk may be graded into different priorities by which process?

- A. Risk monitoring and controlling
- B. Risk response planning
- C. Qualitative risk analysis
- D. Quantitative risk analysis

Answer: C

NEW QUESTION 506

Which of the following processes is necessary to ensure that the project employs all processes needed to meet its requirements?

- A. Perform Quality Control
- B. Quality Policy
- C. Perform Quality Assurance
- D. Quality Planning

Answer: C

NEW QUESTION 510

The Project Human Resource Management process that involves confirming human resource availability and obtaining the team necessary to complete project activities is:

- A. Acquire Project Team.
- B. Plan Human Resource Management.
- C. Manage Project Team.
- D. Develop Project Team.

Answer: A

NEW QUESTION 512

Quality and credibility of the qualitative risk analysis process requires that different levels of the risk's probabilities and impacts be defined is the definition of what?

- A. Risk breakdown structure (RBS)
- B. Risk probability and impact
- C. Qualitative risk analysis
- D. Risk response planning

Answer: B

NEW QUESTION 515

Which of the following is a tool and technique used in all processes within Project Integration Management?

- A. Records management system
- B. Expert judgment
- C. Project management software
- D. Issue log

Answer: B

NEW QUESTION 518

What is the estimate at completion (EAC) if the budget at completion (BAC) is \$100, the actual cost (AC) is \$50, and the earned value (EV) is \$25?

- A. \$50
- B. \$100
- C. \$125
- D. \$200

Answer: D

Explanation: $EAC = BAC / CPI$ and $CPI = EV / AC$ $CPI = EV / AC = 25 / 50 = 0.5$
 $EAC = BAC / CPI = 100 / 0.5 = \200

NEW QUESTION 519

The group technique that enhances brainstorming with a voting process used to rank the most useful ideas for prioritization is called the:

- A. majority rule technique.
- B. nominal group technique.
- C. Delphi technique,
- D. idea/mind mapping technique.

Answer: B

NEW QUESTION 523

Which of the following makes changes to formally control documentation to reflect modified or additional ideas or content?

- A. Defect repair
- B. Updates
- C. Corrective action
- D. Performance reports

Answer: B

NEW QUESTION 528

Which of the following methods of performance review examines project performance over time to determine if performance is improving or deteriorating?

- A. Earned value performance
- B. Trend analysis
- C. Cost-benefit analysis
- D. Variance analysis

Answer: B

NEW QUESTION 531

Which of the following types of a dependency determination is used to define the sequence of activities?

- A. Legal
- B. Discretionary
- C. Internal
- D. Resource

Answer: B

NEW QUESTION 532

Which of the following is an input to Direct and Manage Project Execution?

- A. Requested changes
- B. Approved change requests
- C. Work performance information
- D. Implemented defect repair

Answer: A

NEW QUESTION 533

A tool or technique used in the Control Procurements process is:

- A. Expert judgment.
- B. Performance reporting.
- C. Bidder conferences.
- D. Reserve analysis.

Answer: B

NEW QUESTION 538

Which changes occur in risk and uncertainty as well as the cost of changes as the life cycle of a typical project progresses?

- A. Risk and uncertainty increase; the cost of changes increases.
- B. Risk and uncertainty increase; the cost of changes decreases.
- C. Risk and uncertainty decrease; the cost of changes increases.
- D. Risk and uncertainty decrease; the cost of changes decreases.

Answer: C

NEW QUESTION 541

Which of the following correctly lists the configuration management activities included in the Integrated Change Control process?

- A. Configuration definition, configuration status accounting, configuration monitoring and control
- B. Configuration identification, configuration status accounting, configuration verification and audit
- C. Configuration identification, configuration status reporting, configuration verification and audit
- D. Configuration definition, configuration status reporting, configuration monitoring and Control

Answer: B

NEW QUESTION 542

The process of monitoring the status of the project to update project progress and manage changes to the schedule baseline is:

- A. Control Schedule.
- B. Quality Control.
- C. Perform Integrated Change Control.
- D. Develop Schedule.

Answer: A

NEW QUESTION 546

Which of the following is a component of three-point estimates?

- A. Probabilistic

- B. Most likely
- C. Expected
- D. Anticipated

Answer: B

NEW QUESTION 548

Which of the following is an example of push communication?

- A. Intranet sites
- B. Video conferencing
- C. Knowledge repositories
- D. Press releases

Answer: D

NEW QUESTION 551

After Define Activities and Sequence Activities, the next process is:

- A. Estimate Activity Resources.
- B. Estimate Activity Durations,
- C. Develop Schedule.
- D. Control Schedule.

Answer: A

NEW QUESTION 553

In which process might a project manager use risk reassessment as a tool and technique?

- A. Perform Qualitative Risk Analysis
- B. Risk Control
- C. Monitor and Control Project Work
- D. Plan Risk Responses

Answer: B

NEW QUESTION 558

Which type of management focuses on ensuring that projects and programs are reviewed to prioritize resource allocation?

- A. Project
- B. Functional
- C. Program
- D. Portfolio

Answer: D

NEW QUESTION 560

Impacts to other organizational areas, levels of service, and acceptance criteria are typical components of which document?

- A. Business case
- B. Work breakdown structure
- C. Requirements documentation
- D. Risk register

Answer: C

NEW QUESTION 561

The number of potential communication channels for a project with 5 stakeholders is:

- A. 10.
- B. 12.
- C. 20.
- D. 24.

Answer: A

NEW QUESTION 565

How is scheduled variance calculated using the earned value technique?

- A. EV less AC
- B. AC less PV
- C. EV less PV
- D. AC less EV

Answer: C

NEW QUESTION 569

Which technique is used in Perform Quantitative Risk Analysis?

- A. Sensitivity analysis
- B. Probability and impact matrix
- C. Risk data quality assessment
- D. Risk categorization

Answer: A

NEW QUESTION 574

Which type of elaboration allows a project management team to manage at a greater level of detail as the project evolves?

- A. Cyclic
- B. Progressive
- C. Repetitive
- D. Iterative

Answer: B

NEW QUESTION 575

One of the tools and techniques of the Manage Project Team process is:

- A. organization charts.
- B. ground rules.
- C. organizational theory,
- D. conflict management.

Answer: D

NEW QUESTION 578

Which of the following is an output of the Plan Quality process?

- A. Project document update
- B. Control chart
- C. Cost performance baseline
- D. Organizational process asset update

Answer: A

NEW QUESTION 580

A disadvantage associated with virtual teams is that they:

- A. Require communication technology that is not readily available.
- B. Create difficulties when including people with disabilities.
- C. Often cannot accommodate teams that work different hours or shifts.
- D. Create the possibility for misunderstandings to arise.

Answer: D

NEW QUESTION 583

In which domain of project management would a Pareto chart provide useful information?

- A. Project Scope Management
- B. Project Time Management
- C. Project Communications Management
- D. Project Quality Management

Answer: D

NEW QUESTION 588

Which Process Group includes the Manage Stakeholder Engagement process?

- A. Executing
- B. Planning
- C. Monitoring and Controlling
- D. Initiating

Answer: A

Explanation: Reason: Control Stateholder Engagement is in the Monitoring and Control Process.

NEW QUESTION 590

Activities on the critical path have which type of float?

- A. Zero free float
- B. Zero or negative float
- C. Negative and positive float
- D. Zero or positive float

Answer: B

NEW QUESTION 593

Who is responsible for reviewing change requests and approving or rejecting the change requests?

- A. Change control board
- B. Project manager
- C. Project management office
- D. Project sponsor

Answer: B

NEW QUESTION 596

Which of the following statements is true regarding project and product lifecycles?

- A. A single product lifecycle may consist of multiple project lifecycles.
- B. A product lifecycle is always shorter than the project lifecycle.
- C. A single product lifecycle can only have one project lifecycle.
- D. A single project lifecycle may consist of multiple product lifecycles.

Answer: A

NEW QUESTION 599

Decomposition, rolling wave planning, and templates are all tools and techniques for which of the following?

- A. Define Activities
- B. Estimate Activity Durations
- C. Develop Schedule
- D. Sequence Activities

Answer: A

NEW QUESTION 601

The project has a current cost performance index of 0.80. Assuming this performance will continue, the new estimate at completion is \$1000. What was the original budget at completion for the project?

- A. \$800
- B. \$1000
- C. \$1250
- D. \$1800

Answer: A

NEW QUESTION 605

Which document describes the procurement item in sufficient detail to allow prospective sellers to determine if they are capable of providing the products, services, or results?

- A. Procurement management plan
- B. Procurement statement of work
- C. Request for proposal
- D. Request for quote

Answer: B

NEW QUESTION 610

Which of the following is an input to Direct and Manage Project Execution?

- A. Performance reports
- B. Project charter
- C. Outputs from planning processes
- D. Enterprise environmental factors

Answer: D

NEW QUESTION 611

In which of the following types of organizations is resource availability moderate to high?

- A. Weak matrix

- B. Balanced matrix
- C. Strong matrix
- D. Projectized

Answer: C

NEW QUESTION 612

In a typical project, project managers spend most of their time:

- A. Estimating
- B. Scheduling
- C. Controlling
- D. Communicating

Answer: D

NEW QUESTION 615

What is the name of a graphic display of project team members and their reporting relationships?

- A. Role dependencies chart
- B. Reporting flow diagram
- C. Project organization chart
- D. Project team structure diagram

Answer: C

NEW QUESTION 616

Which of the following are inputs into the Administer Procurements process?

- A. Payment systems, organizational process assets update, and claims administration
- B. Inspections and audits, contract change control system, and project management plan updates
- C. Procurement documents, performance reports, and approved change requests
- D. Project documents, seller proposals, and payment systems

Answer: C

NEW QUESTION 617

The Process Group in which the internal and external stakeholders interact and influence the overall outcome of the project is the:

- A. Monitoring and Controlling Process Group.
- B. Initiating Process Group.
- C. Planning Process Group.
- D. Executing Process Group.

Answer: B

NEW QUESTION 618

Design of experiments (DOE) should be used during which of the following processes?

- A. Perform Quality Assurance
- B. Total Quality Management
- C. Perform Quality Control
- D. Plan Quality

Answer: D

NEW QUESTION 621

The Human Resource Management processes are:

- A. Develop Human Resource Plan, Acquire Project Team, Develop Project Team, and Manage Project Team.
- B. Acquire Project Team, Manage Project Team, Manage Stakeholder Expectations, and Develop Project Team.
- C. Acquire Project Team, Develop Human Resource Plan, Conflict Management, and Manage Project Team.
- D. Develop Project Team, Manage Project Team, Estimate Activity Resources, and Acquire Project Team.

Answer: A

NEW QUESTION 624

The Process Group that involves coordinating people and resources, as well as integrating and performing the activities of the project in accordance with the project management plan is known as:

- A. Initiating.
- B. Planning.
- C. Executing.
- D. Monitoring and Controlling.

Answer: C

NEW QUESTION 627

Using the three-point estimating technique, if the most likely duration is four months, the optimistic duration is two months, and the pessimistic duration is one year, how many months is the expected activity duration?

- A. Two
- B. Four
- C. Five
- D. Twelve

Answer: C

NEW QUESTION 630

Which risk response strategy is common for both positive and negative risks?

- A. Share
- B. Accept
- C. Mitigate
- D. Transfer

Answer: B

NEW QUESTION 633

As the project progresses, which of the following is routinely collected from the project activities?

- A. Communication management activities
- B. Change requests
- C. Configuration verification and audit
- D. Work performance information

Answer: D

NEW QUESTION 637

Which tools or techniques will a project manager use for Develop Project Team?

- A. Negotiation
- B. Roles and responsibilities
- C. Recognition and rewards
- D. Prizing and promoting

Answer: C

NEW QUESTION 638

Which activity involves ensuring that the composition of a projects configuration items is correct?

- A. Configuration Identification
- B. Configuration Status Accounting
- C. Configuration Verification and Audit
- D. Configuration Quality Assurance

Answer: C

NEW QUESTION 639

The three types of estimates that PERT uses to define an approximate range for an activity's cost are:

- A. Parametric, most likely, and analogous.
- B. Least likely, analogous, and realistic.
- C. Parametric, optimistic, and pessimistic.
- D. Most likely, optimistic, and pessimistic.

Answer: D

NEW QUESTION 644

Which type of manager is assigned by the performing organization to lead the team that is responsible for achieving the project objectives?

- A. Program
- B. Functional
- C. Project
- D. Portfolio

Answer: C

NEW QUESTION 647

The run chart created during the Perform Quality Control process on a project is used to show the:

- A. relationship between two variables
- B. data points plotted in the order in which they occur
- C. most common cause of problems in a process
- D. frequency of occurrence

Answer: B

NEW QUESTION 652

The traditional organization chart structure that can be used to show positions and relationships in a graphic top-down format is called a:

- A. Responsible, accountable, consult, and inform (RACI) chart.
- B. Matrix-based chart.
- C. Human resource chart.
- D. Hierarchical-type chart.

Answer: D

NEW QUESTION 655

Which of the following techniques is used during Control Scope?

- A. Cost-benefit analysis
- B. Variance analysis
- C. Reserve analysis
- D. Stakeholder analysis

Answer: B

NEW QUESTION 660

A project manager has created an issue log to document issues communicated by project team members during weekly team meetings. This is an input of:

- A. Manage Stakeholder Expectations.
- B. Monitor and Control Risks.
- C. Plan Risk Management.
- D. Report Performance.

Answer: A

NEW QUESTION 665

Which cost estimate technique includes contingencies to account for cost uncertainty?

- A. Vendor bid analysis
- B. Three-point estimates
- C. Parametric estimating
- D. Reserve analysis

Answer: D

NEW QUESTION 669

Status of deliverables, implementation status for change requests, and forecasted estimates to complete are examples of:

- A. Earned value management.
- B. Enterprise environmental factors.
- C. Organizational process assets.
- D. Work performance information.

Answer: D

NEW QUESTION 672

Job satisfaction, challenging work, and sufficient financial compensation are values related to which interpersonal skill?

- A. Influencing
- B. Motivation
- C. Negotiation
- D. Trust building

Answer: B

NEW QUESTION 675

A tool or technique in Perform Quality Control that a project manager would use is:

- A. quality audits.
- B. process analysis.
- C. benchmarking.

D. inspection.

Answer: D

NEW QUESTION 678

Your project has an EV of 100 work-days, an AC of 120 work-days, and a PV of 80 work days. What should be your concern?

- A. There is a cost under run.
- B. There is a cost overrun.
- C. May not meet deadline.
- D. The project is 20 days behind schedule.

Answer: B

NEW QUESTION 682

Which of the following Project Communication Management processes uses performance reports as an input?

- A. Manage Stakeholder Expectations
- B. Report Performance
- C. Distribute Information
- D. Plan Communications

Answer: C

NEW QUESTION 683

Which of the following is an output from Control Scope?

- A. Change requests
- B. Variance analysis
- C. Accepted deliverables
- D. Requirements documentation

Answer: A

NEW QUESTION 687

Which grid shows which resources are tied to work packages?

- A. Work breakdown structure (WBS)
- B. Responsibility assignment matrix (RAM)
- C. Project assignment chart
- D. Personnel assignment matrix

Answer: B

NEW QUESTION 690

Which of the following correctly describes when organizations and stakeholders are willing to accept varying degrees of risk?

- A. Risk analysis
- B. Risk tolerance
- C. Risk management
- D. Risk attitude

Answer: B

NEW QUESTION 695

The most appropriate project life cycle model for an environment with a high level of change and extensive stakeholder involvement in projects is:

- A. adaptive
- B. reflexive
- C. predictive
- D. iterative

Answer: A

NEW QUESTION 700

Which of the following is an output of Direct and Manage Project Execution?

- A. Project management plan
- B. Change request status updates
- C. Organizational process assets updates
- D. Work performance information

Answer: D

NEW QUESTION 703

Which stakeholder communicates with higher levels of management to gather organizational support and promote project benefits?

- A. Portfolio manager
- B. Project sponsor
- C. Project manager
- D. Project management office

Answer: B

NEW QUESTION 708

Which tool and technique is used in Conduct Procurements?

- A. Teaming agreements
- B. Expert judgment
- C. Bidder conferences
- D. Contract types

Answer: C

NEW QUESTION 709

Within project integration management, the statement of work (SOW) references which aspects of the project?

- A. Strategic plan, business need, and product scope description
- B. Contract, enterprise environmental factors, and organizational process assets
- C. Business plan, project management plan, and project schedule
- D. Product lifecycle, business objective, and management strategy

Answer: A

NEW QUESTION 714

Analytical techniques are a tool and technique of which process in Project Procurement Management?

- A. Plan Procurement Management
- B. Control Procurements
- C. Conduct Procurements
- D. Close Procurements

Answer: C

NEW QUESTION 715

An intentional activity to modify a nonconforming product or product component is called:

- A. defect repair
- B. work repair
- C. corrective action
- D. preventive action

Answer: A

NEW QUESTION 717

To which process is work performance information an input?

- A. Contract administration
- B. Direction and management of project execution
- C. Create WBS
- D. Qualitative risk analysis

Answer: A

NEW QUESTION 721

Which process group contains the processes performed to finalize all activities?

- A. Planning Process Group
- B. Executing Process Group
- C. Monitoring and Controlling Process Group
- D. Closing Process Group

Answer: D

NEW QUESTION 724

Change request status updates are an output of which process?

- A. Perform Integrated Change Control
- B. Direct and Manage Project Execution

- C. Close Project or Phase
- D. Monitor and Control Project Work

Answer: A

NEW QUESTION 726

Which of the following is an input to the Direct and Manage Project Execution process?

- A. Approved change requests
- B. Approved contract documentation
- C. Work performance information
- D. Rejected change requests

Answer: A

NEW QUESTION 727

The integrative nature of project management requires which Process Group to interact with the other Process Groups?

- A. Planning
- B. Executing
- C. Monitoring and Controlling
- D. Project Management

Answer: C

NEW QUESTION 728

Variance and trend analysis is a tool and technique used in which process?

- A. Perform Qualitative Risk Analysis
- B. Perform Quantitative Risk Analysis
- C. Control Risks
- D. Plan Risk Responses

Answer: C

NEW QUESTION 732

The Plan Procurements process includes documenting project purchasing decisions and what other steps?

- A. Specifying the approach and identifying potential sellers
- B. Specifying the approach and selecting a seller
- C. Identifying potential sellers and obtaining seller responses
- D. Specifying the approach and managing procurement relationships

Answer: A

NEW QUESTION 733

Which quality tool incorporates the upper and lower specification limits allowed within an agreement?

- A. Control chart
- B. Flowchart
- C. Checksheet
- D. Pareto diagram

Answer: A

NEW QUESTION 734

For a stakeholder with low interest and high power, the project manager should:

- A. Monitor the stakeholder.
- B. Manage the stakeholder closely.
- C. Keep the stakeholder satisfied.
- D. Keep the stakeholder informed.

Answer: C

NEW QUESTION 736

The project manager at an organization has just realized that some of the engineering staff has been allocated to project Y and will not be available to finish task X. The project manager has also discovered that at the current pace, it will not be possible to complete the project on time. Due to cost constraints, hiring more work force is not a viable option. Which tools are at the manager's disposal?

- A. Resource leveling and fast tracking
- B. Fast tracking and crashing
- C. Crashing and applying leads and lags
- D. Scheduling tools and applying leads and lags

Answer: A

NEW QUESTION 740

Which of the following can be used as an input for Define Scope?

- A. Product analysis
- B. Project charter
- C. Scope baseline
- D. Project scope statement

Answer: B

NEW QUESTION 742

Which tool and technique is used in Conduct Procurements?

- A. Teaming agreements
- B. Expert judgment
- C. Bidder conferences
- D. Contract types

Answer: C

NEW QUESTION 746

The iterative process of increasing the level of detail in a project management plan as greater amounts of information become available is known as:

- A. Continuous improvement.
- B. Predictive planning.
- C. Progressive elaboration.
- D. Quality assurance.

Answer: C

NEW QUESTION 749

When managing a project team, what helps to reduce the amount of conflict?

- A. Clear role definition
- B. Negotiation
- C. Risk response planning
- D. Team member replacement

Answer: A

NEW QUESTION 753

Which tool or technique is used to develop the human resource management plan?

- A. Ground rules
- B. Expert judgment
- C. Team-building activities
- D. Interpersonal skills

Answer: B

NEW QUESTION 755

Approved change requests, approved corrective actions, and updates to organizational process assets are all outputs of which project management process?

- A. Risk response planning
- B. Manage stakeholders
- C. Scope definition
- D. Performance reporting

Answer: B

NEW QUESTION 756

Ensuring that both parties meet contractual obligations and that their own legal rights are protected is a function of:

- A. Conduct Procurements.
- B. Close Procurements.
- C. Administer Procurements,
- D. Plan Procurements.

Answer: C

NEW QUESTION 757

A project manager requesting industry groups and consultants to recommend project intervention is relying on:

- A. Communication models.
- B. Stakeholder participation.
- C. Expert judgment
- D. Enterprise environmental factors.

Answer: C

Explanation: Topic 4, Monitoring and Controlling

NEW QUESTION 761

Which process involves aggregating the estimated costs of the individual schedule activities or work packages?

- A. Estimate Costs
- B. Estimate Activity Resources
- C. Control Costs
- D. Determine Budget

Answer: B

NEW QUESTION 763

The process to ensure that appropriate quality standards and operational definitions are used is:

- A. Plan Quality.
- B. Perform Quality Assurance.
- C. Perform Quality Control.
- D. Total Quality Management.

Answer: B

NEW QUESTION 766

Whose approval may be required for change requests after change control board (CCB) approval?

- A. Functional managers
- B. Business partners
- C. Customers or sponsors
- D. Subject matter experts

Answer: C

NEW QUESTION 769

Which technique is commonly used for the Quantitative Risk Analysis activity?

- A. Brainstorming
- B. Strategies for Opportunities
- C. Decision Tree Analysis
- D. Risk Data Quality Assessment

Answer: C

NEW QUESTION 773

Work performance information and cost forecasts are outputs of which Project Cost Management process?

- A. Estimate Costs
- B. Plan Cost Management
- C. Determine Budget
- D. Control Costs

Answer: D

NEW QUESTION 775

Projects are authorized by which of the following individuals?

- A. Project managers
- B. Stakeholders
- C. Functional managers
- D. Sponsors

Answer: D

NEW QUESTION 778

Perform Integrated Change Control is the process of:

- A. Reviewing, approving, and managing all change requests
- B. Facilitating change management, manuals, or automation tools
- C. Comparing actual results with planned results in order to expand or change a project

D. Documenting changes according to the change control system by the change control board

Answer: A

NEW QUESTION 782

In Project Cost Management, which input is exclusive to the Determine Budget process?

- A. Scope baseline
- B. Organizational process assets
- C. Project schedule
- D. Resource calendars

Answer: D

NEW QUESTION 785

When cost variance is negative and schedule variance is positive, the project is:

- A. under budget and behind schedule.
- B. over budget and ahead of schedule.
- C. on schedule.
- D. complete; all planned values have been earned.

Answer: B

NEW QUESTION 788

How is the schedule variance calculated using the earned value technique?

- A. EV less AC
- B. AC less PV
- C. EV less PV
- D. AC less EV

Answer: C

NEW QUESTION 792

The following chart contains information about the tasks in a project.

Task	PV	AC	EV
1	10,000	10,000	10,000
2	10,000	8,000	10,000
3	10,000	8,000	8,000
4	9,000	12,000	10,000
5	10,000	12,000	12,000
6	10,000	10,000	12,000
7	12,000	12,000	10,000
8	10,000	8,000	9,000
9	12,000	10,000	11,000

Based on the chart, what is the schedule variance (SV) for Task 8?

- A. -2,000
- B. -1,000
- C. 1,000
- D. 2,000

Answer: B

NEW QUESTION 794

Cost baseline is an output of which of the following processes?

- A. Control Costs
- B. Determine Budget
- C. Estimate Costs
- D. Estimate Activity Resources

Answer: B

NEW QUESTION 798

Which change request is an intentional activity that realigns the performance of the project work with the project management plan?

- A. Update
- B. Preventive action
- C. Defect repair
- D. Corrective action

Answer: D

NEW QUESTION 799

A collection of projects managed as a group to achieve strategic objectives is referred to as a:

- A. plan
- B. process
- C. program
- D. portfolio

Answer: D

NEW QUESTION 802

An output of the Plan Quality Management process is:

- A. A process improvement plan,
- B. Quality control measurements.
- C. Work performance information,
- D. The project management plan.

Answer: A

NEW QUESTION 803

Which technique is utilized in the Control Schedule process?

- A. Performance measure
- B. Baseline schedule
- C. Schedule network analysis
- D. Variance analysis

Answer: D

NEW QUESTION 804

One of the fundamental tenets of modern quality management states that quality is:

- A. planned, designed, and built in.
- B. planned, designed, and inspected in.
- C. built in, created, and reviewed.
- D. built in, created, and standardized.

Answer: A

NEW QUESTION 809

Which tool or technique is used in the Perform Integrated Change Control process?

- A. Decomposition
- B. Modeling techniques
- C. Resource optimization

D. Meetings

Answer: D

NEW QUESTION 814

Analyzing the strengths, weaknesses, opportunities, and threats (SWOT) of a project is known as:

- A. calculating cost of quality
- B. comparing project benefits
- C. performing measurements analysis
- D. identifying risks

Answer: D

NEW QUESTION 815

A given schedule activity is most likely to last four weeks. In a best-case scenario, the schedule activity is estimated to last two weeks. In a worst-case scenario, the schedule activity is estimated to last 12 weeks. Given these three estimates, what is the expected duration of the activity?

- A. Three weeks
- B. Four weeks
- C. Five weeks
- D. Six weeks

Answer: C

NEW QUESTION 817

Scope, schedule, and cost parameters are integrated in the:

- A. Performance measurement baseline.
- B. Analysis of project forecasts,
- C. Summary of changes approved in a period,
- D. Analysis of past performance.

Answer: A

NEW QUESTION 821

Activity cost estimates and the project schedule are inputs to which Project Cost Management process?

- A. Estimate Costs
- B. Control Costs
- C. Plan Cost Management
- D. Determine Budget

Answer: D

NEW QUESTION 822

Which item is an input to the Define Activities process?

- A. Schedule data
- B. Activity list
- C. Risk register
- D. Scope baseline

Answer: D

NEW QUESTION 824

In the Estimate Activity Durations process, productivity metrics and published commercial information inputs are part of the:

- A. enterprise environmental factors.
- B. organizational process assets.
- C. project management plan,
- D. project funding requirements.

Answer: A

NEW QUESTION 827

An effective technique for resolving conflict that incorporates multiple viewpoints from differing perspectives to achieve consensus and commitment is:

- A. smooth/accommodate.
- B. force/direct,
- C. collaborate/problem solve,
- D. compromise/reconcile.

Answer: C

NEW QUESTION 829

Which of the following is a tool or technique used in the Determine Budget process?

- A. Variance analysis
- B. Three-point estimating
- C. Bottom-up estimating
- D. Historical relationships

Answer: D

NEW QUESTION 834

The Administer Procurements process is in which of the following Project Management Process Groups?

- A. Planning
- B. Monitoring and Controlling
- C. Initiating
- D. Executing

Answer: B

NEW QUESTION 835

The process of monitoring the status of the project and product scope as well as managing the changes to the scope baseline is known as:

- A. Validate Scope.
- B. Plan Scope Management.
- C. Control Scope.
- D. Define Scope.

Answer: C

NEW QUESTION 838

The following chart contains information about the tasks in a project.

Task	PV	AC	EV
1	10,000	10,000	10,000
2	10,000	8,000	10,000
3	10,000	8,000	8,000
4	9,000	12,000	10,000
5	10,000	12,000	12,000
6	10,000	10,000	12,000
7	12,000	12,000	10,000
8	10,000	8,000	9,000
9	12,000	10,000	11,000

Based on the chart, what is the cost variance (CV) for Task 6?

- A. -2,000
- B. 1,000

C. 2,000

Answer:

NEW QUESTION 843

Which quality control technique illustrates the 80/20 principle?

- A. Ishikawa diagram
- B. Control chart
- C. Run chart
- D. Pareto chart

Answer: D

NEW QUESTION 847

A technique used to determine the cause and degree of difference between baseline and actual performance is:

- A. Product analysis.
- B. Variance analysis.
- C. Document analysis,
- D. Decomposition.

Answer: B

NEW QUESTION 852

Analogous cost estimating relies on which of the following techniques?

- A. Expert judgment
- B. Project management software
- C. Vendor bid analysis
- D. Reserve analysis

Answer: A

NEW QUESTION 857

The total of the planned value (PV) is also known as:

- A. work breakdown structure (WBS).
- B. schedule target.
- C. performance measurement baseline (PMB).
- D. earned value baseline.

Answer: C

NEW QUESTION 858

Schedule milestones and a predefined budget are examples of:

- A. Project constraints.
- B. Requirements documentation.
- C. Organizational process assets.
- D. Activity cost estimates.

Answer: A

NEW QUESTION 862

Which process is responsible for monitoring the status of the project and product scope and managing changes to the scope baseline?

- A. Variance Analysis
- B. Define Scope
- C. Verify Scope
- D. Control Scope

Answer: D

NEW QUESTION 865

What is the critical chain method?

- A. A technique to calculate the theoretical early start and finish dates and late start and finish dates
- B. A schedule network analysis technique that modifies the project schedule to account for limited resources
- C. A schedule compression technique that analyzes cost and schedule trade-offs to determine how to obtain the greatest amount of compression for the least incremental cost
- D. A technique to estimate project duration when there is a limited amount of detailed information about the project

Answer: B

NEW QUESTION 866

Which Activity Duration Estimating technique incorporates additional timing for contingency purposes?

- A. Analogous Estimating
- B. Expert Judgment
- C. Optimistic Estimates
- D. Reserve Analysis

Answer: D

NEW QUESTION 871

Which process occurs within the Monitoring and Controlling Process Group?

- A. Cost Control
- B. Quality Planning
- C. Quantitative Risk Analysis
- D. Cost Budgeting

Answer: A

NEW QUESTION 874

The key benefit of the Monitoring and Controlling Process Group is the ability to:

- A. establish and manage project communication channels, both external and internal to the project team.
- B. influence the stakeholders that want to circumvent integrated change control so that their changes are implemented.
- C. monitor the ongoing project team against the team performance assessments and the project performance baseline.
- D. observe and measure project performance regularly and consistently to identify variances from the project management plan.

Answer: D

NEW QUESTION 878

An element of the modern quality management approach used to achieve compatibility with the International Organization for Standardization (ISO) is known as:

- A. Forecasting,
- B. Brainstorming.
- C. Historical databases.
- D. Cost of quality.

Answer: D

NEW QUESTION 879

The CPI is .92, and the EV is US\$172,500. What is the actual cost of the project?

- A. US\$158,700
- B. US\$172,500
- C. US\$187,500
- D. US\$245,600

Answer: C

NEW QUESTION 881

An input of the Control Schedule process is the:

- A. resource calendar.
- B. activity list.
- C. risk management plan.
- D. organizational process assets.

Answer: D

NEW QUESTION 884

Which schedule development technique modifies the project schedule to account for limited resources?

- A. Human resource planning
- B. Fast tracking
- C. Critical chain method
- D. Rolling wave planning

Answer: C

NEW QUESTION 885

Which of the following processes audits the quality requirements and the results from quality control measures to ensure appropriate quality standards and operational definitions are used?

- A. Perform Quality Control

- B. Quality Metrics
- C. Perform Quality Assurance
- D. Plan Quality

Answer: C

NEW QUESTION 886

Which type of dependency used in the Sequence Activities process is sometimes referred to as preferred logic, preferential logic, or soft logic?

- A. Internal
- B. External
- C. Discretionary
- D. Mandatory

Answer: C

NEW QUESTION 888

Using the following data, what is the Schedule Performance Index (SPI)? EV= \$500 PV= \$750 AC= \$1000 BAC= \$1200

- A. 0.67
- B. 1.5
- C. 0.75
- D. 0.5

Answer: A

NEW QUESTION 890

Labor, materials, equipment, and supplies are examples of:

- A. Resource attributes.
- B. Resource types.
- C. Resource categories.
- D. Resource breakdown structures (RBS).

Answer: C

NEW QUESTION 893

During which process does the project team receive bids and proposals?

- A. Conduct Procurements
- B. Plan Procurements
- C. Estimate Costs
- D. Control Budget

Answer: A

NEW QUESTION 896

When a control chart is used to monitor performance of a process, which of the following will be set by the project manager and the appropriate stakeholders to reflect the point(s) at which corrective action will be taken to prevent exceeding the specification limits?

- A. Upper and lower control limits
- B. Upper and lower specification limits
- C. Process mean
- D. Data points

Answer: A

NEW QUESTION 899

As part of a mid-project evaluation, your project sponsor has asked you to provide a forecast of total project cost. You should calculate the forecast using which of the following methods?

- A. BAC
- B. EAC
- C. ETC
- D. WBS

Answer: B

NEW QUESTION 904

An output of the Perform Integrated Change Control process is:

- A. Deliverables.
- B. Validated changes.
- C. The change log.
- D. The requirements traceability matrix.

Answer: C

NEW QUESTION 909

Which technique is utilized in the Schedule Control process?

- A. Performance Measure
- B. Baseline Schedule
- C. Schedule Comparison
- D. Variance Analysis

Answer: D

NEW QUESTION 912

Which type of contract gives both the seller and the buyer flexibility to deviate from performance with financial incentives?

- A. Cost Plus Incentive Fee (CPIF)
- B. Fixed Price Incentive Fee (FPIF)
- C. Cost Plus Award Fee (CPAF)
- D. Time and Material (T&M)

Answer: B

NEW QUESTION 917

The process improvement plan details the steps for analyzing processes to identify activities which enhance their:

- A. quality.
- B. value.
- C. technical performance.
- D. status.

Answer: B

NEW QUESTION 922

Which Develop Schedule tool and technique produces a theoretical early start date and late start date?

- A. Critical path method
- B. Variance analysis
- C. Schedule compression
- D. Schedule comparison bar charts

Answer: A

NEW QUESTION 924

Which of the following are outputs of the Monitor and Control Project Work process?

- A. Requested changes, forecasts, recommended corrective actions
- B. Forecasts, resources plan, bottom up estimating
- C. Recommended corrective actions, cost baseline, forecasts
- D. Requested changes, recommended corrective actions, project constraints

Answer: A

NEW QUESTION 925

Which of the following events would result in a baseline update?

- A. A project is behind schedule and the project manager wants the baseline to reflect estimated actual completion.
- B. A customer has approved a change request broadening the project scope and increasing the budget.
- C. One of the risks identified in the risk management plan occurs, resulting in a schedule delay.
- D. One of the key project team resources has left the team and no replacement is available.

Answer: B

NEW QUESTION 930

Cost aggregation is typically performed by aggregating work packages in accordance with the:

- A. Program evaluation and review technique (PERT).
- B. Cost of quality (COQ).
- C. Rough order of magnitude (ROM).
- D. Work breakdown structure (WBS).

Answer: D

NEW QUESTION 934

Under which type of contract does the seller receive reimbursement for all allowable costs for performing contract work, as well as a fixed-fee payment calculated

as a percentage of the initial estimated project costs?

- A. Cost Plus Fixed Fee Contract (CPFF)
- B. Cost Plus Incentive Fee Contract (CPIF)
- C. Firm Fixed Price Contract (FFP)
- D. Fixed Price with Economic Price Adjustment Contract (FP-EPA)

Answer: A

NEW QUESTION 938

Using parametric estimating, if an assigned resource is capable of producing 120 units per hour, how many hours are required to produce 12,000 units?

- A. 100
- B. 120
- C. 1,000
- D. 1,200

Answer: A

NEW QUESTION 940

Organizational process assets, a lessons-learned database, and historical information are all inputs to which process?

- A. Plan Cost Management
- B. Plan Scope Management
- C. Plan Stakeholder Management
- D. Plan Schedule Management

Answer: C

NEW QUESTION 945

Change requests are processed for review and disposition according to which process?

- A. Control Quality
- B. Control Scope
- C. Monitor and Control Project Work
- D. Perform Integrated Change Control

Answer: D

NEW QUESTION 946

Which of the following schedule network analysis techniques is applied when a critical path method calculation has been completed and resources availability is critical?

- A. Applying calendars
- B. Resource leveling
- C. Resource planning
- D. Resource conflict management

Answer: B

NEW QUESTION 951

Plan-do-check-act is also known as:

- A. prevention over inspection.
- B. statistical sampling.
- C. management responsibility,
- D. continuous improvement.

Answer: D

NEW QUESTION 955

Testing falls into which of the following categories of cost of quality?

- A. Internal failure costs
- B. Prevention costs
- C. Appraisal costs
- D. External failure costs

Answer: C

NEW QUESTION 957

The approaches, tools, and data sources that will be used to perform risk management on a project are determined by the:

- A. Methodology
- B. Risk category

- C. Risk attitude
- D. Assumption analysis

Answer: A

NEW QUESTION 960

Which of the Project Time Management processes analyzes activity sequencing, durations, resource requirements, and schedule constraints?

- A. Estimate Activity Durations
- B. ControlSchedule
- C. Sequence Activities
- D. Develop Schedule

Answer: D

NEW QUESTION 961

Which of the following are the components of the scope baseline?

- A. Project charter, project scope statement, and work breakdown structure (WBS)
- B. Project charter, project management plan, and plan procurement
- C. Project scope statement, work breakdown structure (WBS), and WBS dictionary
- D. Project management plan, plan procurement, and contract administration

Answer: C

NEW QUESTION 965

A key benefit of the Manage Communications process is that it enables:

- A. The best use of communication methods.
- B. An efficient and effective communication flow.
- C. Project costs to be reduced.
- D. The best use of communication technology.

Answer: B

NEW QUESTION 966

An input of the Plan Procurement Management process is:

- A. Make-or-buy decisions.
- B. Activity cost estimates.
- C. Seller proposals.
- D. Procurement documents.

Answer: B

NEW QUESTION 970

The CPI is .92, and the EV is US\$172,500. What is the actual cost of the project?

- A. US\$158,700
- B. US\$172,500
- C. US\$187,500
- D. US\$245,600

Answer: C

NEW QUESTION 975

When does risk monitoring and control occur?

- A. At project initiation
- B. During work performance analysis
- C. Throughout the life of the project
- D. At project milestones

Answer: C

NEW QUESTION 977

Change requests are an output from which Project Integration Management process?

- A. Direct and Manage Project Execution
- B. Develop Project Management Plan
- C. Close Project
- D. Develop Project Charter

Answer: A

NEW QUESTION 981

What happens to a stakeholder's project influence over time?

- A. Increases
- B. Decreases
- C. Stays the same
- D. Has no bearing

Answer: B

NEW QUESTION 982

The Perform Integrated Change Control process occurs in which Process Group?

- A. Initiating
- B. Executing
- C. Monitoring and Controlling
- D. Planning

Answer: C

NEW QUESTION 987

Which Perform Quality Assurance tool or technique is used to identify a problem, discover the underlying causes that lead to it, and develop preventative actions?

- A. Inspection
- B. Quality audits
- C. Design of experiments
- D. Root cause analysis

Answer: D

NEW QUESTION 990

The Monitoring and Controlling Process Group includes processes that:

- A. Establish the scope, objectives, and course of action of a project,
- B. Define a new project or a new phase of an existing project.
- C. Track, review, and regulate the progress and performance of a project.
- D. Complete the work defined in the project management plan.

Answer: C

NEW QUESTION 991

Control charts, flowcharting, histograms, Pareto charts, and scatter diagrams are tools and techniques of which process?

- A. Perform Quality Control
- B. Perform Quality Assurance
- C. Plan Quality
- D. Report Performance

Answer: A

NEW QUESTION 996

Which type of analysis is used to determine the cause and degree of difference between the baseline and actual performance?

- A. Schedule network analysis
- B. Reserve analysis
- C. Alternative analysis
- D. Variance analysis

Answer: D

NEW QUESTION 999

Which process occurs within the Monitoring and Controlling Process Group?

- A. Control Costs
- B. Plan Quality
- C. Perform Quantitative Risk Analysis
- D. Determine Budget

Answer: A

NEW QUESTION 1001

A project manager should document the escalation path for unresolved project risks in the:

- A. Change control plan
- B. Stakeholder register

- C. Risk log
- D. Communications management plan

Answer: D

NEW QUESTION 1004

Administer Procurements is part of which Process Group?

- A. Planning
- B. Executing
- C. Monitoring and Controlling
- D. Closing

Answer: C

NEW QUESTION 1005

Configuration identification, configuration status accounting, and configuration verification and audit are all activities in which process?

- A. Perform Quality Assurance
- B. Direct and Manage Project Work
- C. Monitor and Control Project Work
- D. Perform Integrated Change Control

Answer: D

NEW QUESTION 1010

.....

THANKS FOR TRYING THE DEMO OF OUR PRODUCT

Visit Our Site to Purchase the Full Set of Actual PMP Exam Questions With Answers.

We Also Provide Practice Exam Software That Simulates Real Exam Environment And Has Many Self-Assessment Features. Order the PMP Product From:

<https://www.2passeasy.com/dumps/PMP/>

Money Back Guarantee

PMP Practice Exam Features:

- * PMP Questions and Answers Updated Frequently
- * PMP Practice Questions Verified by Expert Senior Certified Staff
- * PMP Most Realistic Questions that Guarantee you a Pass on Your FirstTry
- * PMP Practice Test Questions in Multiple Choice Formats and Updatesfor 1 Year