

Exam Questions az-500

Microsoft Azure Security Technologies

<https://www.2passeasy.com/dumps/az-500/>



NEW QUESTION 1

You need to meet the identity and access requirements for Group1.
 What should you do?

- A. Add a membership rule to Group1.
- B. Delete Group1. Create a new group named Group1 that has a membership type of Office 365. Add users and devices to the group.
- C. Modify the membership rule of Group1.
- D. Change the membership type of Group1 to Assign
- E. Create two groups that have dynamic membership
- F. Add the new groups to Group1.

Answer: B

Explanation:

Incorrect Answers:

A, C: You can create a dynamic group for devices or for users, but you can't create a rule that contains both users and devices.

D: For assigned group you can only add individual members. Scenario:

Litware identifies the following identity and access requirements: All San Francisco users and their devices must be members of Group1. The tenant currently contain this group:

Name	Type	Description
Group1	Security group	A group that has the Dynamic User membership type, contains all the San Francisco users, and provides access to many Azure AD applications and Azure resources.

References:

<https://docs.microsoft.com/en-us/azure/active-directory/users-groups-roles/groups-dynamic-membership>

<https://docs.microsoft.com/en-us/azure/active-directory/fundamentals/active-directory-groups-create-azure-portal>

Testlet 2

This is a case study. Case studies are not timed separately. You can use as much exam time as you would like to complete each case. However, there may be additional case studies and sections on this exam. You must manage your time to ensure that you are able to complete all questions included on this exam in the time provided.

To answer the questions included in a case study, you will need to reference information that is provided in the case study. Case studies might contain exhibits and other resources that provide more information about the scenario that is described in the case study. Each question is independent of the other question on this case study.

At the end of this case study, a review screen will appear. This screen allows you to review your answers and to make changes before you move to the next sections of the exam. After you begin a new section, you cannot return to this section.

To start the case study

To display the first question on this case study, click the Next button. Use the buttons in the left pane to explore the content of the case study before you answer the questions. Clicking these buttons displays information such as business requirements, existing environment, and problem statements. If the case study has an All Information tab, note that the information displayed is identical to the information displayed on the subsequent tabs. When you are ready to answer a question, click the Question button to return to the question.

Overview

Contoso, Ltd. is a consulting company that has a main office in Montreal and two branch offices in Seattle and New York. The company hosts its entire server infrastructure in Azure.

Contoso has two Azure subscriptions named Sub1 and Sub2. Both subscriptions are associated to an Azure Active Directory (Azure AD) tenant named contoso.com.

Technical requirements

Contoso identifies the following technical requirements:

Deploy Azure Firewall to VNetWork1 in Sub2.

Register an application named App2 in contoso.com.

Whenever possible, use the principle of least privilege.

Enable Azure AD Privileged Identity Management (PIM) for contoso.com

Contoso.com contains the users shown in the following table.

Name	City	Role
User1	Montreal	Global administrator
User2	MONTREAL	Security administrator
User3	London	Privileged role administrator
User4	Ontario	Application administrator
User5	Seattle	Cloud application administrator
User6	Seattle	User administrator
User7	Sydney	Reports reader
User8	Sydney	None

Contoso.com contains the security groups shown in the following table.

Name	Membership type	Dynamic membership rule
Group1	Dynamic user	<code>user.city -contains "ON"</code>
Group2	Dynamic user	<code>user.city -match "*on"</code>

Sub1

Sub1 contains six resource groups named RG1, RG2, RG3, RG4, RG5, and RG6.

User2 creates the virtual networks shown in the following table.

Name	Resource group
VNET1	RG1
VNET2	RG2
VNET3	RG3
VNET4	RG4

Sub1 contains the locks shown in the following table.

Name	Set on	Lock type
Lock1	RG1	Delete
Lock2	RG2	Read-only
Lock3	RG3	Delete
Lock4	RG3	Read-only

Sub1 contains the Azure policies shown in the following table.

Policy definition	Resource type	Scope
Allowed resource types	networkSecurityGroups	RG4
Not allowed resource types	virtualNetworks/subnets	RG5
Not allowed resource types	networksSecurityGroups	RG5
Not allowed resource types	virtualNetworks/virtualNetworkPeerings	RG6

Sub2

Name	Subnet
VNetwork1	Subnet1.1, Subnet1.2 and Subnet1.3
VNetwork2	Subnet2.1

Sub2 contains the virtual machines shown in the following table.

Name	Network interface	Application security group	Connected to
VM1	NIC1	ASG1	Subnet1.1
VM2	NIC2	ASG2	Subnet1.1
VM3	NIC3	None	Subnet1.2
VM4	NIC4	ASG1	Subnet1.3
VM5	NIC5	None	Subnet2.1

All virtual machines have the public IP addresses and the Web Server (IIS) role installed. The firewalls for each virtual machine allow ping requests and web requests.

Sub2 contains the network security groups (NSGs) shown in the following table.

Name	Associated to
NSG1	NIC2
NSG2	Subnet1.1
NSG3	Subnet1.3
NSG4	Subnet2.1

NSG1 has the inbound security rules shown in the following table.

Priority	Port	Protocol	Source	Destination	Action
65000	Any	Any	VirtualNetwork	VirtualNetwork	Allow
65001	Any	Any	AzureLoadBalancer	Any	Allow
65500	Any	Any	Any	Any	Deny

NSG2 has the inbound security rules shown in the following table.

Priority	Port	Protocol	Source	Destination	Action
100	80	TCP	Internet	VirtualNetwork	Allow
65000	Any	Any	VirtualNetwork	VirtualNetwork	Allow
65001	Any	Any	AzureLoadBalancer	Any	Allow
65500	Any	Any	Any	Any	Deny

NSG3 has the inbound security rules shown in the following table.

Priority	Port	Protocol	Source	Destination	Action
100	Any	TCP	ASG1	ASG1	Allow
150	Any	Any	ASG2	VirtualNetwork	Allow
200	Any	Any	Any	Any	Deny
65000	Any	Any	VirtualNetwork	VirtualNetwork	Allow
65001	Any	Any	AzureLoadBalancer	Any	Allow
65500	Any	Any	Any	Any	Deny

NSG4 has the inbound security rules shown in the following table.

Priority	Port	Protocol	Source	Destination	Action
100	Any	Any	Any	Any	Allow
65000	Any	Any	VirtualNetwork	VirtualNetwork	Allow
65001	Any	Any	AzureLoadBalancer	Any	Allow
65500	Any	Any	Any	Any	Deny

NSG1, NSG2, NSG3, and NSG4 have the outbound security rules shown in the following table.

Priority	Port	Protocol	Source	Destination	Action
65000	Any	Any	VirtualNetwork	VirtualNetwork	Allow
65001	Any	Any	Any	Internet	Allow
65500	Any	Any	Any	Any	Deny

Contoso identifies the following technical requirements:

- * Deploy Azure Firewall to VNetwork1 in Sub2.
- * Register an application named App2 in contoso.com.
- * Whenever possible, use the principle of least privilege.
- * Enable Azure AD Privileged Identity Management (PIM) for contoso.com.m.

NEW QUESTION 2

Note: This question is part of a series of questions that present the same scenario. Each question in the series contains a unique solution that might meet the stated goals. Some question sets might have more than one correct solution, while others might not have a correct solution.

After you answer a question in this section, you will NOT be able to return to it. As a result, these questions will not appear in the review screen.

You have an Azure Subscription named Sub1.

You have an Azure Storage account named Sa1 in a resource group named RG1.

Users and applications access the blob service and the file service in Sa1 by using several shared access signatures (SASs) and stored access policies. You discover that unauthorized users accessed both the file service and the blob service.

You need to revoke all access to Sa1.

Solution: You create a new stored access policy. Does this meet the goal?

- A. Yes
- B. No

Answer: A

Explanation:

To revoke a stored access policy, you can either delete it, or rename it by changing the signed identifier. Changing the signed identifier breaks the associations between any existing signatures and the stored access policy. Deleting or renaming the stored access policy immediately effects all of the shared access signatures associated with it.

References:

<https://docs.microsoft.com/en-us/rest/api/storageservices/Establishing-a-Stored-Access-Policy>

NEW QUESTION 3

Note: This question is part of a series of questions that present the same scenario. Each question in the series contains a unique solution that might meet the stated goals. Some question sets might have more than one correct solution, while others might not have a correct solution.

After you answer a question in this section, you will NOT be able to return to it. As a result, these questions will not appear in the review screen.

You have a hybrid configuration of Azure Active Directory (AzureAD). You have an Azure HDInsight cluster on a virtual network.

You plan to allow users to authenticate to the cluster by using their on-premises Active Directory credentials. You need to configure the environment to support the planned authentication.

Solution: You deploy the On-premises data gateway to the on-premises network. Does this meet the goal?

- A. Yes
- B. No

Answer: B

Explanation:

Instead, you connect HDInsight to your on-premises network by using Azure Virtual Networks and a VPN gateway.

- Note: To allow HDInsight and resources in the joined network to communicate by name, you must perform the following actions: Create Azure Virtual Network.
- Create a custom DNS server in the Azure Virtual Network.
- Configure the virtual network to use the custom DNS server instead of the default Azure Recursive Resolver. Configure forwarding between the custom DNS server and your on-premises DNS server.

References:

<https://docs.microsoft.com/en-us/azure/hdinsight/connect-on-premises-network>

NEW QUESTION 4

DRAG DROP

You need to configure an access review. The review will be assigned to a new collection of reviews and reviewed by resource owners.

Which three actions should you perform in sequence? To answer, move the appropriate actions from the list of actions to the answer area and arrange them in the correct order.

Select and Place:

Actions

Create an access review program.

Set Reviewers to Selected users.

Create an access review audit.

Create an access review control.

Set Reviewers to Group owners.

Set Reviewers to Members.

Answer Area

- A. Mastered
 B. Not Mastered

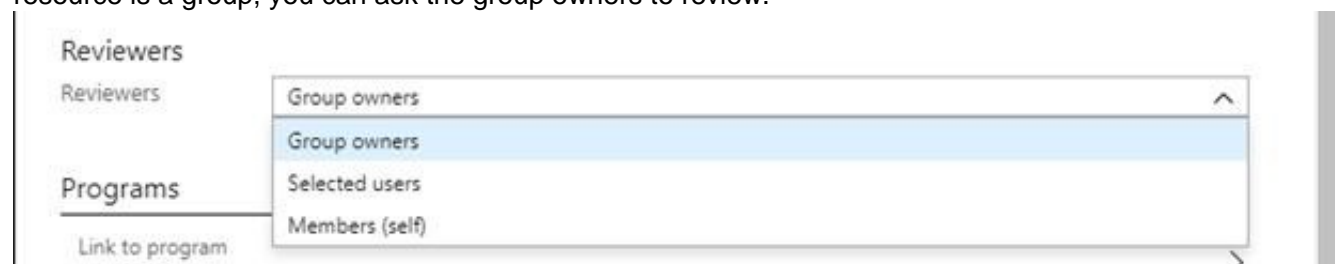
Answer: A

Explanation:

Step 1: Create an access review program Step 2: Create an access review control

Step 3: Set Reviewers to Group owners

In the Reviewers section, select either one or more people to review all the users in scope. Or you can select to have the members review their own access. If the resource is a group, you can ask the group owners to review.



References:

<https://docs.microsoft.com/en-us/azure/active-directory/governance/create-access-review>

<https://docs.microsoft.com/en-us/azure/active-directory/governance/manage-programs-controls>

NEW QUESTION 5

HOTSPOT

You have an Azure Container Registry named Registry1.

You add role assignment for Registry1 as shown in the following table.

User	Role
User1	AcrPush
User2	AcrPull
User3	AcrImageSigner
User4	Contributor

Which users can upload images to Registry1 and download images from Registry1? To answer, select the appropriate options in the answer area.

NOTE: Each correct selection is worth one point.

Hot Area:

Answer Area

Upload images:

▼

Download images:

▼

- A. Mastered
 B. Not Mastered

Answer: A

Explanation:

Box 1: User1 and User4 only

Owner, Contributor and AcrPush can push images.

Box 2: User1, User2, and User4

All, except AcrImagineSigner, can download/pull images.

Role/Permission	Access Resource Manager	Create/delete registry	Push image	Pull image	Delete image data	Change policies	Sign images
Owner	X	X	X	X	X	X	
Contributor	X	X	X	X	X	X	
Reader	X			X			
AcrPush			X	X			
AcrPull				X			
AcrDelete					X		
AcrImageSigner							X

References:

<https://docs.microsoft.com/bs-latn-ba/azure/container-registry/container-registry-roles>

NEW QUESTION 6

You have an Azure subscription.

You create an Azure web app named Contoso1812 that uses an S1 App service plan.

You create a DNS record for www.contoso.com that points to the IP address of Contoso1812.

You need to ensure that users can access Contoso1812 by using the https://www.contoso.com URL. Which two actions should you perform? Each correct answer presents part of the solution.

NOTE: Each correct selection is worth one point.

- A. Turn on the system-assigned managed identity for Contoso1812.
 B. Add a hostname to Contoso1812.
 C. Scale out the App Service plan of Contoso1812.
 D. Add a deployment slot to Contoso1812.
 E. Scale up the App Service plan of Contoso1812.

Answer: BE

Explanation:

B: You can configure Azure DNS to host a custom domain for your web apps. For example, you can create an Azure web app and have your users access it using either www.contoso.com or contoso.com as a fully qualified domain name (FQDN).

To do this, you have to create three records:

A root "A" record pointing to contoso.com A root "TXT" record for verification

A "CNAME" record for the www name that points to the A record

E: To map a custom DNS name to a web app, the web app's App Service plan must be a paid tier (Shared, Basic, Standard, Premium or Consumption for Azure Functions). I

Scale up the App Service plan: Select any of the non-free tiers (D1, B1, B2, B3, or any tier in the Production category). References:

<https://docs.microsoft.com/en-us/azure/dns/dns-web-sites-custom-domain>

Testlet 1

This is a case study. Case studies are not timed separately. You can use as much exam time as you would like to complete each case. However, there may be additional case studies and sections on this exam. You must manage your time to ensure that you are able to complete all questions included on this exam in the time provided.

To answer the questions included in a case study, you will need to reference information that is provided in the case study. Case studies might contain exhibits and other resources that provide more information about the scenario that is described in the case study. Each question is independent of the other question on this case study.

At the end of this case study, a review screen will appear. This screen allows you to review your answers and to make changes before you move to the next sections of the exam. After you begin a new section, you cannot return to this section.

To start the case study

To display the first question on this case study, click the Next button. Use the buttons in the left pane to explore the content of the case study before you answer the questions. Clicking these buttons displays information such as business requirements, existing environment, and problem statements. If the case study has an All Information tab, note that the information displayed is identical to the information displayed on the subsequent tabs. When you are ready to answer a question, click the Question button to return to the question.

Overview

Litware, Inc. is a digital media company that has 500 employees in the Chicago area and 20 employees in the San Francisco area.

Existing Environment

Litware has an Azure subscription named Sub1 that has a subscription ID of 43894a43-17c2-4a39-8cfc-3540c2653ef4.

Sub1 is associated to an Azure Active Directory (Azure AD) tenant named litwareinc.com. The tenant contains the user objects and the device objects of all the Litware employees and their devices. Each user is assigned an Azure AD Premium P2 license. Azure AD Privileged Identity Management (PIM) is activated.

The tenant contains the groups shown in the following table.

Name	Type	Description
Group1	Security group	A group that has the Dynamic User membership type, contains all the San Francisco users, and provides access to many Azure AD applications and Azure resources.
Group2	Security group	A group that has the Dynamic User membership type and contains the Chicago IT team

The Azure subscription contains the objects shown in the following table.

Name	Type	Description
VNet1	Virtual network	VNet1 is a virtual network that contains security-sensitive IT resources. VNet1 contains three subnets named Subnet0, Subnet1, and AzureFirewallSubnet.
VM0	Virtual machine	VM0 is an Azure virtual machine that runs Windows Server 2016, connects to Subnet0, and has just in time (JIT) VM access configured.
VM1	Virtual machine	VM1 is an Azure virtual machine that runs Windows Server 2016 and connects to Subnet0.
SQLDB1	Azure SQL Database	SQLDB1 is an Azure SQL database on a SQL Database server named LitwareSQLServer1.
WebApp1	Web app	WebApp1 is an Azure web app that is accessible by using https://litwareinc.com and http://www.litwareinc.com .
Resource Group1	Resource group	Resource Group1 is a resource group that contains VNet1, VM0, and VM1.
Resource Group2	Resource group	Resource Group2 is a resource group that contains shared IT resources.

Azure Security Center is set to the Free tier.

Planned changes

Litware plans to deploy the Azure resources shown in the following table.

Name	Type	Description
Firewall1	Azure Firewall	An Azure firewall on VNet1.
RT1	Route table	A route table that will contain a route pointing to Firewall1 as the default gateway and will be assigned to Subnet0.
AKS1	Azure Kubernetes Service (AKS)	A managed AKS cluster

Litware identifies the following identity and access requirements:

- _ All San Francisco users and their devices must be members of Group1.
- _ The members of Group2 must be assigned the Contributor role to Resource Group2 by using a permanent eligible assignment.
- _ Users must be prevented from registering applications in Azure AD and from consenting to applications that access company information on the users' behalf.

Platform Protection Requirements

Litware identifies the following platform protection requirements:

- _ Microsoft Antimalware must be installed on the virtual machines in Resource Group1.
- _ The members of Group2 must be assigned the Azure Kubernetes Service Cluster Admin Role. Azure AD users must be able to authenticate to AKS1 by using their Azure AD credentials.
- _ Following the implementation of the planned changes, the IT team must be able to connect to VM0 by using JIT VM access.
- _ A new custom RBAC role named Role1 must be used to delegate the administration of the managed disks in Resource Group1. Role1 must be available only for Resource Group1.

Security Operations Requirements

Litware must be able to customize the operating system security configurations in Azure Security Center.

NEW QUESTION 7

You need to ensure that users can access VM0. The solution must meet the platform protection requirements.

What should you do?

- A. Move VM0 to Subnet1.
- B. On Firewall, configure a network traffic filtering rule.
- C. Assign RT1 to AzureFirewallSubnet.
- D. On Firewall, configure a DNAT rule.

Answer: A

Explanation:

Azure Firewall has the following known issue:

Conflict with Azure Security Center (ASC) Just-in-Time (JIT) feature.

If a virtual machine is accessed using JIT, and is in a subnet with a user-defined route that points to Azure Firewall as a default gateway, ASC JIT doesn't work. This is a result of asymmetric routing – a packet comes in via the virtual machine public IP (JIT opened the access), but the return path is via the firewall, which drops the packet because there is no established session on the firewall.

Solution: To work around this issue, place the JIT virtual machines on a separate subnet that doesn't have a user-defined route to the firewall. Scenario:

VM0	Virtual machine	VM0 is an Azure virtual machine that runs Windows Server 2016, connects to Subnet0, and has just in time (JIT) VM access configured.
-----	-----------------	--

Following the implementation of the planned changes, the IT team must be able to connect to VM0 by using JIT VM access.

Name	Type	Description
Firewall1	Azure Firewall	An Azure firewall on VNet1.
RT1	Route table	A route table that will contain a route pointing to Firewall1 as the default gateway and will be assigned to Subnet0.

References:

<https://docs.microsoft.com/en-us/azure/firewall/overview>

Testlet 2

This is a case study. Case studies are not timed separately. You can use as much exam time as you would like to complete each case. However, there may be additional case studies and sections on this exam. You must manage your time to ensure that you are able to complete all questions included on this exam in the time provided.

To answer the questions included in a case study, you will need to reference information that is provided in the case study. Case studies might contain exhibits and other resources that provide more information about the scenario that is described in the case study. Each question is independent of the other question on this case study.

At the end of this case study, a review screen will appear. This screen allows you to review your answers and to make changes before you move to the next sections of the exam. After you begin a new section, you cannot return to this section.

To start the case study

To display the first question on this case study, click the Next button. Use the buttons in the left pane to explore the content of the case study before you answer the questions. Clicking these buttons displays information such as business requirements, existing environment, and problem statements. If the case study has an All Information tab, note that the information displayed is identical to the information displayed on the subsequent tabs. When you are ready to answer a question, click the Question button to return to the question.

Overview

Contoso, Ltd. is a consulting company that has a main office in Montreal and two branch offices in Seattle and New York. The company hosts its entire server infrastructure in Azure.

Contoso has two Azure subscriptions named Sub1 and Sub2. Both subscriptions are associated to an Azure Active Directory (Azure AD) tenant named contoso.com.

Technical requirements

Contoso identifies the following technical requirements:

- Deploy Azure Firewall to VNetWork1 in Sub2. Register an application named App2 in contoso.com.
- Whenever possible, use the principle of least privilege.
- Enable Azure AD Privileged Identity Management (PIM) for contoso.com

Existing Environment Azure AD

Contoso.com contains the users shown in the following table.

Name	City	Role
User1	Montreal	Global administrator
User2	MONTREAL	Security administrator
User3	London	Privileged role administrator
User4	Ontario	Application administrator
User5	Seattle	Cloud application administrator
User6	Seattle	User administrator
User7	Sydney	Reports reader
User8	Sydney	None

Contoso.com contains the security groups shown in the following table.

Name	Membership type	Dynamic membership rule
Group1	Dynamic user	user.city -contains "ON"
Group2	Dynamic user	user.city -match "*on"

Sub1

Sub1 contains six resource groups named RG1, RG2, RG3, RG4, RG5, and RG6. User2 creates the virtual networks shown in the following table.

Name	Resource group
VNET1	RG1
VNET2	RG2
VNET3	RG3
VNET4	RG4

Sub1 contains the locks shown in the following table.

Name	Set on	Lock type
Lock1	RG1	Delete
Lock2	RG2	Read-only
Lock3	RG3	Delete
Lock4	RG3	Read-only

Sub1 contains the Azure policies shown in the following table.

Policy definition	Resource type	Scope
Allowed resource types	networkSecurityGroups	RG4
Not allowed resource types	virtualNetworks/subnets	RG5
Not allowed resource types	networksSecurityGroups	RG5
Not allowed resource types	virtualNetworks/virtualNetworkPeerings	RG6

Sub2

Sub2 contains the network security groups (NSGs) shown in the following table.

Name	Associated to
NSG1	NIC2
NSG2	Subnet1.1
NSG3	Subnet1.3
NSG4	Subnet2.1

NSG1 has the inbound security rules shown in the following table.

Priority	Port	Protocol	Source	Destination	Action
65000	Any	Any	VirtualNetwork	VirtualNetwork	Allow
65001	Any	Any	AzureLoadBalancer	Any	Allow
65500	Any	Any	Any	Any	Deny

NSG2 has the inbound security rules shown in the following table.

Priority	Port	Protocol	Source	Destination	Action
100	80	TCP	Internet	VirtualNetwork	Allow
65000	Any	Any	VirtualNetwork	VirtualNetwork	Allow
65001	Any	Any	AzureLoadBalancer	Any	Allow
65500	Any	Any	Any	Any	Deny

NSG3 has the inbound security rules shown in the following table.

Priority	Port	Protocol	Source	Destination	Action
100	Any	TCP	ASG1	ASG1	Allow
150	Any	Any	ASG2	VirtualNetwork	Allow
200	Any	Any	Any	Any	Deny
65000	Any	Any	VirtualNetwork	VirtualNetwork	Allow
65001	Any	Any	AzureLoadBalancer	Any	Allow
65500	Any	Any	Any	Any	Deny

NSG4 has the inbound security rules shown in the following table.

Priority	Port	Protocol	Source	Destination	Action
100	Any	Any	Any	Any	Allow
65000	Any	Any	VirtualNetwork	VirtualNetwork	Allow
65001	Any	Any	AzureLoadBalancer	Any	Allow
65500	Any	Any	Any	Any	Deny

NSG1, NSG2, NSG3, and NSG4 have the outbound security rules shown in the following table.

Priority	Port	Protocol	Source	Destination	Action
65000	Any	Any	VirtualNetwork	VirtualNetwork	Allow
65001	Any	Any	Any	Internet	Allow
65500	Any	Any	Any	Any	Deny

Contoso identifies the following technical requirements:

- _ Deploy Azure Firewall to VNetwork1 in Sub2. Register an application named App2 in contoso.com.
- _ Whenever possible, use the principle of least privilege.
- _ Enable Azure AD Privileged Identity Management (PIM) for contoso.com.

NEW QUESTION 8

You have an Azure subscription named Sub1. Sub1 contains a virtual network named VNet1 that contains one subnet named Subnet1.

You create a service endpoint for Subnet1.
 Subnet1 contains an Azure virtual machine named VM1 that runs Ubuntu Server 18.04.
 You need to deploy Docker containers to VM1. The containers must be able to access Azure Storage resources and Azure SQL databases by using the service endpoint.

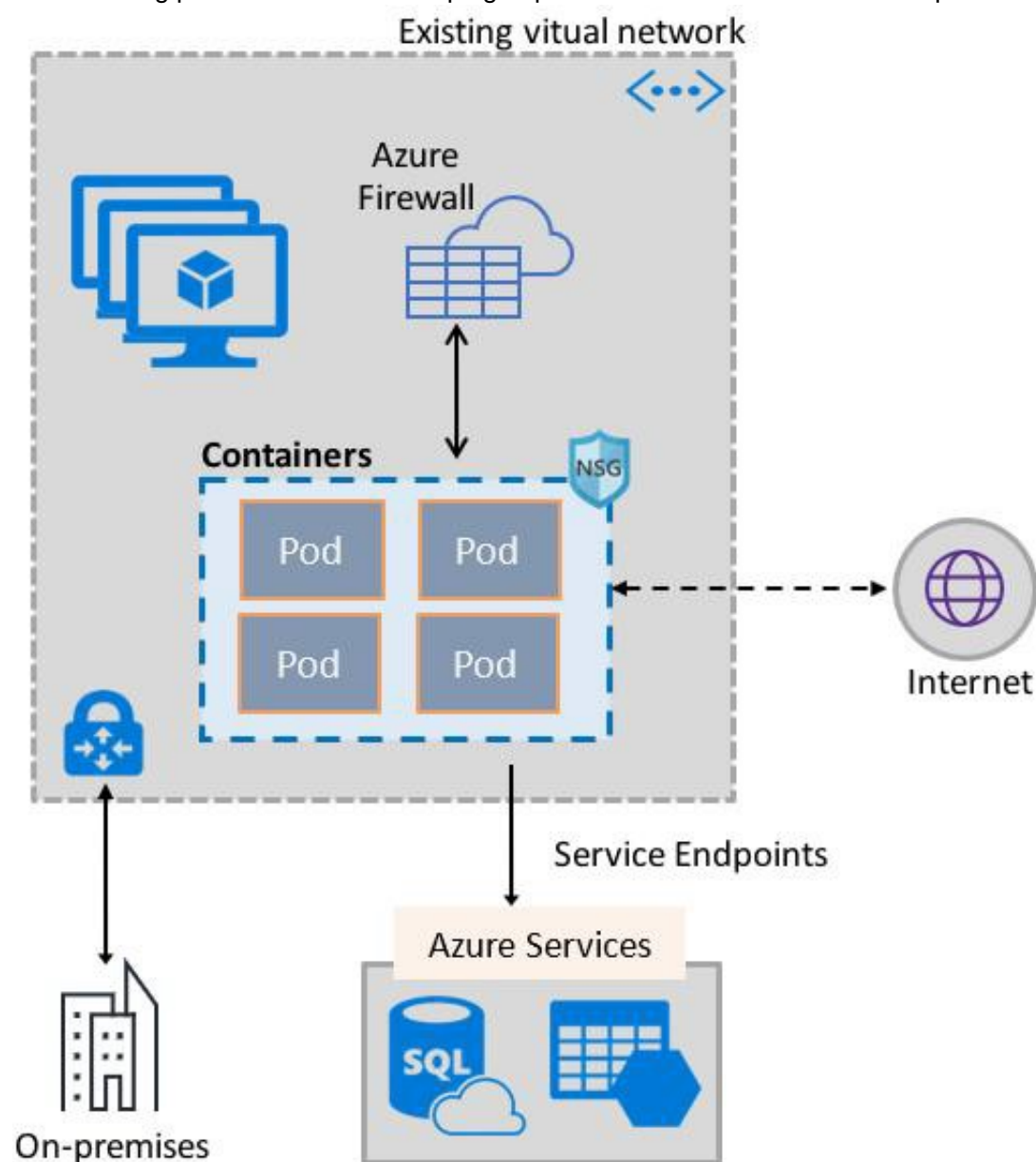
- A. Create an application security group and a network security group (NSG).
- B. Edit the docker-compose.yml file.
- C. Install the container network interface (CNI) plug-in.

Answer: C

Explanation:

The Azure Virtual Network container network interface (CNI) plug-in installs in an Azure Virtual Machine. The plug-in supports both Linux and Windows platform. The plug-in assigns IP addresses from a virtual network to containers brought up in the virtual machine, attaching them to the virtual network, and connecting them directly to other containers and virtual network resources. The plug-in doesn't rely on overlay networks, or routes, for connectivity, and provides the same performance as virtual machines.

The following picture shows how the plug-in provides Azure Virtual Network capabilities to Pods:



References:

<https://docs.microsoft.com/en-us/azure/virtual-network/container-networking-overview>

NEW QUESTION 9

You have Azure Resource Manager templates that you use to deploy Azure virtual machines.
 You need to disable unused Windows features automatically as instances of the virtual machines are provisioned. What should you use?

- A. device compliance policies in Microsoft Intune
- B. Azure Automation State Configuration
- C. application security groups
- D. Azure Advisor

Answer: B

Explanation:

You can use Azure Automation State Configuration to manage Azure VMs (both Classic and Resource Manager), on-premises VMs, Linux machines, AWS VMs, and on-premises physical machines.

Note: Azure Automation State Configuration provides a DSC pull server similar to the Windows Feature DSC-Service so that target nodes automatically receive configurations, conform to the desired state, and report back on their compliance. The built-in pull server in Azure Automation eliminates the need to set up and maintain your own pull server. Azure Automation can target virtual or physical Windows or Linux machines, in the cloud or on-premises.

References:

<https://docs.microsoft.com/en-us/azure/automation/automation-dsc-getting-started>

NEW QUESTION 10

HOTSPOT

You have an Azure subscription. The subscription contains Azure virtual machines that run Windows Server 2016.
 You need to implement a policy to ensure that each virtual machine has a custom antimalware virtual machine extension installed. How should you complete the policy? To answer, select the appropriate options in the answer area.

NOTE: Each correct selection is worth one point.

Hot Area:

Answer Area

```

{
  "if": {
    "allOf": [
      {
        "field": "type",
        "equals": "Microsoft.Compute/virtualMachines"
      },
      {
        "field": "Microsoft.Compute/imagesSKU",
        "equals": "2016-Datacenter",
      }
    ]
  },
  "then": {
    "effect": "DeployIfNotExists",
    "details": {
      "type": "Microsoft.GuestConfiguration/guestConfigurationAssignments",
      "roleDefinitionsId": [
        "/providers/microsoft.authorization/roleDefinitions/12345678-1234-5678-abcd-012345678910"
      ],
      "name": "customExtension",
      "deployment": {
        "properties": {
          "mode": "incremental",
          "parameters": {
            "existenceCondition": "resources",
            "template": "template"
          }
        }
      }
    }
  }
}

```

- A. Mastered
B. Not Mastered

Answer: A

Explanation:

Box 1: DeployIfNotExists

DeployIfNotExists executes a template deployment when the condition is met.

Box 2: Template

The details property of the DeployIfNotExists effects has all the subproperties that define the related resources to match and the template deployment to execute.

Deployment [required]

This property should include the full template deployment as it would be passed to the Microsoft.Resources/deployment References:

<https://docs.microsoft.com/en-us/azure/governance/policy/concepts/effects>

NEW QUESTION 10

HOTSPOT

You have Azure virtual machines that have Update Management enabled. The virtual machines are configured as shown in the following table.

Name	Operating system	Region	Resource group
VM1	Windows Server 2012	East US	RG1
VM2	Windows Server 2012 R2	West US	RG1
VM3	Windows Server 2016	West US	RG2
VM4	Ubuntu Server 18.04 LTS	West US	RG2
VM5	Red Hat Enterprise Linux 7.4	East US	RG1
VM6	CentOS 7.5	East US	RG1

You schedule two update deployments named Update1 and Update2. Update1 updates VM3. Update2 updates VM6.

Which additional virtual machines can be updated by using Update1 and Update2? To answer, select the appropriate options in the answer area.

NOTE: Each correct selection is worth one point.

Hot Area:

Answer Area

Update1:

▼
VM2 only
VM4 only
VM1 and VM2 only
VM1, VM2, VM4, VM5, and VM6

Update2:

▼
VM5 only
VM1 and VM5 only
VM4 and VM5 only
VM1, VM2, and VM5 only
VM1, VM2, VM3, VM4, and VM5

- A. Mastered
 B. Not Mastered

Answer: A

Explanation:

Update1: VM1 and VM2 only

VM3: Windows Server 2016 West US RG2

Update2: VM4 and VM5 only VM6: CentOS 7.5 East US RG1

For Linux, the machine must have access to an update repository. The update repository can be private or public. References:

<https://docs.microsoft.com/en-us/azure/automation/automation-update-management>

NEW QUESTION 12

HOTSPOT

You have an Azure subscription named Sub1.

You create a virtual network that contains one subnet. On the subnet, you provision the virtual machines shown in the following table.

Name	Network interface	Application security group assignment	IP address
VM1	NIC1	AppGroup12	10.0.0.10
VM2	NIC2	AppGroup12	10.0.0.11
VM3	NIC3	AppGroup3	10.0.0.100
VM4	NIC4	AppGroup4	10.0.0.200

Currently, you have not provisioned any network security groups (NSGs). You need to implement network security to meet the following requirements:

_ Allow traffic to VM4 from VM3 only.

_ Allow traffic from the Internet to VM1 and VM2 only. Minimize the number of NSGs and network security rules.

How many NSGs and network security rules should you create? To answer, select the appropriate options in the answer area.

NOTE: Each correct selection is worth one point.

Hot Area:

Answer Area

NSGs:

	▼
1	
2	
3	
4	

Network security rules:

	▼
1	
2	
3	
4	

- A. Mastered
- B. Not Mastered

Answer: A

Explanation:
NSGs: 2
Network security rules: 3
Not 2: You cannot specify multiple service tags or application groups) in a security rule.
References:
<https://docs.microsoft.com/en-us/azure/virtual-network/security-overview>

NEW QUESTION 13

HOTSPOT
You have an Azure key vault.
You need to delegate administrative access to the key vault to meet the following requirements:
_ Provide a user named User1 with the ability to set advanced access policies for the key vault. Provide a user named User2 with the ability to add and delete certificates in the key vault. Use the principle of least privilege.
What should you use to assign access to each user? To answer, select the appropriate options in the answer area.
NOTE: Each correct selection is worth one point.
Hot Area:

Answer Area

User1:

	▼
A key vault access policy	
Azure Information Protection	
Azure Policy	
Managed identities for Azure resources	
RBAC	

User2:

	▼
A key vault access policy	
Azure Information Protection	
Azure Policy	
Managed identities for Azure resources	
RBAC	

- A. Mastered
- B. Not Mastered

Answer: A

Explanation:

User1: RBAC

_ RBAC is used as the Key Vault access control mechanism for the management plane. It would allow a user with the proper identity to: set Key Vault access policies

_ create, read, update, and delete key vaults set Key Vault tags

Note: Role-based access control (RBAC) is a system that provides fine-grained access management of Azure resources. Using RBAC, you can segregate duties within your team and grant only the amount of access to users that they need to perform their jobs.

User2: A key vault access policy

A key vault access policy is the access control mechanism to get access to the key vault data plane. Key Vault access policies grant permissions separately to keys, secrets, and certificates.

References:

<https://docs.microsoft.com/en-us/azure/key-vault/key-vault-secure-your-key-vault>

NEW QUESTION 16

You are testing an Azure Kubernetes Service (AKS) cluster. The cluster is configured as shown in the exhibit. (Click the Exhibit tab.)

BASICS

Subscription	Microsoft Azure Sponsorship
Resource group	AzureBackupRG_eastus2_1
Region	East US
Kubernetes cluster name	akscluster2
Kubernetes version	1.1 1.5
DNS name prefix	akscluster2
Node count	3
Node size	Standard_DS2_v2
Virtual nodes (preview)	Disabled

AUTHENTICATION

Enable RBAC	No
-------------	----

NETWORKING

HTTP application routing	Yes
Network configuration	Basic

MONITORING

Enable container monitoring	No
-----------------------------	----

TAGS

You plan to deploy the cluster to production. You disable HTTP application routing.

You need to implement application routing that will provide reverse proxy and TLS termination for AKS services by using a single IP address. What should you do?

- A. Create an AKS Ingress controller.
- B. Install the container network interface (CNI) plug-in.
- C. Create an Azure Standard Load Balancer.
- D. Create an Azure Basic Load Balancer.

Answer: A

Explanation:

An ingress controller is a piece of software that provides reverse proxy, configurable traffic routing, and TLS termination for Kubernetes services.

References:

<https://docs.microsoft.com/en-us/azure/aks/ingress-tls>

NEW QUESTION 21

You need to ensure that you can meet the security operations requirements.

What should you do first?

- A. Turn on Auto Provisioning in Security Center.
- B. Integrate Security Center and Microsoft Cloud App Security.
- C. Upgrade the pricing tier of Security Center to Standard.
- D. Modify the Security Center workspace configuration.

Answer: C

Explanation:

The Standard tier extends the capabilities of the Free tier to workloads running in private and other public clouds, providing unified security management and threat protection across your hybrid cloud workloads. The Standard tier also adds advanced threat detection capabilities, which uses built-in behavioral analytics and machine learning to identify attacks and zero-day exploits, access and application controls to reduce exposure to network attacks and malware, and more.

Scenario: Security Operations Requirements

Litware must be able to customize the operating system security configurations in Azure Security Center. References:

<https://docs.microsoft.com/en-us/azure/security-center/security-center-pricing>

Question Set 3

NEW QUESTION 25

You create a new Azure subscription.

You need to ensure that you can create custom alert rules in Azure Security Center. Which two actions should you perform? Each correct answer presents part of the solution. NOTE: Each correct selection is worth one point.

- A. Onboard Azure Active Directory (Azure AD) Identity Protection.
- B. Create an Azure Storage account.
- C. Implement Azure Advisor recommendations.
- D. Create an Azure Log Analytics workspace.
- E. Upgrade the pricing tier of Security Center to Standard.

Answer: BD

Explanation:

D: You need write permission in the workspace that you select to store your custom alert.

References:

<https://docs.microsoft.com/en-us/azure/security-center/security-center-custom-alert>

NEW QUESTION 26

DRAG DROP

You have an Azure subscription that contains 100 virtual machines. Azure Diagnostics is enabled on all the virtual machines. You are planning the monitoring of Azure services in the subscription.

You need to retrieve the following details:

- _ Identify the user who deleted a virtual machine three weeks ago.
- _ Query the security events of a virtual machine that runs Windows Server 2016.

What should you use in Azure Monitor? To answer, drag the appropriate configuration settings to the correct details. Each configuration setting may be used once, more than once, or not at all. You may need to drag the split bar between panes or scroll to view content.

NOTE: Each correct selection is worth one point.

Select and Place:

Settings	Answer Area
Activity log	
Logs	Identify the user who deleted a virtual machine three weeks ago: <input type="text"/>
Metrics	Query the security events of a virtual machine that runs Windows Server 2016: <input type="text"/>
Service Health	

- A. Mastered
- B. Not Mastered

Answer: A

Explanation:

Box1: Activity log

Azure activity logs provide insight into the operations that were performed on resources in your subscription. Activity logs were previously known as “audit logs” or “operational logs,” because they report control-plane events for your subscriptions.

Activity logs help you determine the “what, who, and when” for write operations (that is, PUT, POST, or DELETE). Box 2: Logs

Log Integration collects Azure diagnostics from your Windows virtual machines, Azure activity logs, Azure Security Center alerts, and Azure resource provider logs. This integration provides a unified dashboard for all your assets, whether they’re on-premises or in the cloud, so that you can aggregate, correlate, analyze, and alert for security events.

References:

<https://docs.microsoft.com/en-us/azure/security/azure-log-audit>

Testlet 1

This is a case study. Case studies are not timed separately. You can use as much exam time as you would like to complete each case. However, there may be additional case studies and sections on this exam. You must manage your time to ensure that you are able to complete all questions included on this exam in the time provided.

To answer the questions included in a case study, you will need to reference information that is provided in the case study. Case studies might contain exhibits and other resources that provide more information about the scenario that is described in the case study. Each question is independent of the other question on this case study.

At the end of this case study, a review screen will appear. This screen allows you to review your answers and to make changes before you move to the next sections of the exam. After you begin a new section, you cannot return to this section.

To start the case study

To display the first question on this case study, click the Next button. Use the buttons in the left pane to explore the content of the case study before you answer the questions. Clicking these buttons displays information such as business requirements, existing environment, and problem statements. If the case study has an All Information tab, note that the information displayed is identical to the information displayed on the subsequent tabs. When you are ready to answer a question, click the Question button to return to the question.

Overview

Litware, Inc. is a digital media company that has 500 employees in the Chicago area and 20 employees in the San Francisco area.

Existing Environment

Litware has an Azure subscription named Sub1 that has a subscription ID of 43894a43-17c2-4a39-8cfc-3540c2653ef4.

Sub1 is associated to an Azure Active Directory (Azure AD) tenant named litwareinc.com. The tenant contains the user objects and the device objects of all the Litware employees and their devices. Each user is assigned an Azure AD Premium P2 license. Azure AD Privileged Identity Management (PIM) is activated.

The tenant contains the groups shown in the following table.

Name	Type	Description
Group1	Security group	A group that has the Dynamic User membership type, contains all the San Francisco users, and provides access to many Azure AD applications and Azure resources.
Group2	Security group	A group that has the Dynamic User membership type and contains the Chicago IT team

The Azure subscription contains the objects shown in the following table.

Name	Type	Description
VNet1	Virtual network	VNet1 is a virtual network that contains security-sensitive IT resources. VNet1 contains three subnets named Subnet0, Subnet1, and AzureFirewallSubnet.
VM0	Virtual machine	VM0 is an Azure virtual machine that runs Windows Server 2016, connects to Subnet0, and has just in time (JIT) VM access configured.
VM1	Virtual machine	VM1 is an Azure virtual machine that runs Windows Server 2016 and connects to Subnet0.
SQLDB1	Azure SQL Database	SQLDB1 is an Azure SQL database on a SQL Database server named LitwareSQLServer1.
WebApp1	Web app	WebApp1 is an Azure web app that is accessible by using https://litwareinc.com and http://www.litwareinc.com .
Resource Group1	Resource group	Resource Group1 is a resource group that contains VNet1, VM0, and VM1.
Resource Group2	Resource group	Resource Group2 is a resource group that contains shared IT resources.

Azure Security Center is set to the Free tier.

Planned changes

Litware plans to deploy the Azure resources shown in the following table.

Name	Type	Description
Firewall1	Azure Firewall	An Azure firewall on VNet1.
RT1	Route table	A route table that will contain a route pointing to Firewall1 as the default gateway and will be assigned to Subnet0.
AKS1	Azure Kubernetes Service (AKS)	A managed AKS cluster

Litware identifies the following identity and access requirements:

- _ All San Francisco users and their devices must be members of Group1.
- _ The members of Group2 must be assigned the Contributor role to Resource Group2 by using a permanent eligible assignment.
- _ Users must be prevented from registering applications in Azure AD and from consenting to applications that access company information on the users' behalf.

Platform Protection Requirements

Litware identifies the following platform protection requirements:

- _ Microsoft Antimalware must be installed on the virtual machines in Resource Group1.
- _ The members of Group2 must be assigned the Azure Kubernetes Service Cluster Admin Role. Azure AD users must be able to authenticate to AKS1 by using their Azure AD credentials.
- _ Following the implementation of the planned changes, the IT team must be able to connect to VM0 by using JIT VM access.
- _ A new custom RBAC role named Role1 must be used to delegate the administration of the managed disks in Resource Group1. Role1 must be available only for Resource Group1.

Security Operations Requirements

Litware must be able to customize the operating system security configurations in Azure Security Center.

NEW QUESTION 28

Your company has an Azure subscription named Sub1 that is associated to an Azure Active Directory (Azure AD) tenant named contoso.com.

The company develops an application named App1. App1 is registered in Azure AD.

You need to ensure that App1 can access secrets in Azure Key Vault on behalf of the application users. What should you configure?

- A. an application permission without admin consent
- B. a delegated permission without admin consent
- C. a delegated permission that requires admin consent
- D. an application permission that requires admin consent

Answer: B

Explanation:

Delegated permissions - Your client application needs to access the web API as the signed-in user, but with access limited by the selected permission. This type of permission can be granted by a user unless the permission requires administrator consent.

Incorrect Answers:

A, D: Application permissions - Your client application needs to access the web API directly as itself (no user context). This type of permission requires administrator consent and is also not available for public (desktop and mobile) client applications.

References:

<https://docs.microsoft.com/en-us/azure/active-directory/develop/quickstart-configure-app-access-web-apis>

NEW QUESTION 31

Your company has an Azure subscription named Sub1 that is associated to an Azure Active Directory Azure (Azure AD) tenant named contoso.com.

The company develops a mobile application named App1. App1 uses the OAuth 2 implicit grant type to acquire Azure AD access tokens. You need to register App1 in Azure AD.

What information should you obtain from the developer to register the application?

- A. a redirect URI
- B. a reply URL
- C. a key
- D. an application ID

Answer: A

Explanation:

For Native Applications you need to provide a Redirect URI, which Azure AD will use to return token responses.

References:

<https://docs.microsoft.com/en-us/azure/active-directory/develop/v1-protocols-oauth-code>

NEW QUESTION 32

You have a hybrid configuration of Azure Active Directory (Azure AD).

All users have computers that run Windows 10 and are hybrid Azure AD joined.

You have an Azure SQL database that is configured to support Azure AD authentication.

Database developers must connect to the SQL database by using Microsoft SQL Server Management Studio (SSMS) and authenticate by using their on-premises Active Directory account.

You need to tell the developers which authentication method to use to connect to the SQL database from SSMS. The solution must minimize authentication prompts.

Which authentication method should you instruct the developers to use?

- A. SQL Login
- B. Active Directory – Universal with MFA support
- C. Active Directory – Integrated
- D. Active Directory – Password

Answer: C

Explanation:

Azure AD can be the initial Azure AD managed domain. Azure AD can also be an on-premises Active Directory Domain Services that is federated with the Azure AD.

Using an Azure AD identity to connect using SSMS or SSDT

The following procedures show you how to connect to a SQL database with an Azure AD identity using SQL Server Management Studio or SQL Server Database Tools.

Active Directory integrated authentication

Use this method if you are logged in to Windows using your Azure Active Directory credentials from a federated domain.

1. Start Management Studio or Data Tools and in the Connect to Server (or Connect to Database Engine) dialog box, in the Authentication box, select Active Directory - Integrated. No password is needed or can be entered because your existing credentials will be presented for the connection.

Connect to Server

SQL Server

Server type: Database Engine

Server name: tedus.database.windows.net

Authentication: Active Directory - Integrated

User name: DOMAIN\username

Password:

☐ Remember password

Connect Cancel Help Options >>

2. Select the Options button, and on the Connection Properties page, in the Connect to database box, type the name of the user database you want to connect to. (The AD domain name or tenant ID” option is only supported for Universal with MFA connection options, otherwise it is greyed out.)

References:

<https://github.com/MicrosoftDocs/azure-docs/blob/master/articles/sql-database/sql-database-aad-authentication-configure.md>

NEW QUESTION 35

You have an Azure SQL Database server named SQL1.

You plan to turn on Advanced Threat Protection for SQL1 to detect all threat detection types. Which action will Advanced Threat Protection detect as a threat?

- A. A user updates more than 50 percent of the records in a table.
- B. A user attempts to sign as select * from table1.
- C. A user is added to the db_owner database role.
- D. A user deletes more than 100 records from the same table.

Answer: B

Explanation:

Advanced Threat Protection can detect potential SQL injections: This alert is triggered when an active exploit happens against an identified application vulnerability to SQL injection. This means the attacker is trying to inject malicious SQL statements using the vulnerable application code or stored procedures.

References:

<https://docs.microsoft.com/en-us/azure/sql-database/sql-database-threat-detection-overview>

NEW QUESTION 38

.....

THANKS FOR TRYING THE DEMO OF OUR PRODUCT

Visit Our Site to Purchase the Full Set of Actual az-500 Exam Questions With Answers.

We Also Provide Practice Exam Software That Simulates Real Exam Environment And Has Many Self-Assessment Features. Order the az-500 Product From:

<https://www.2passeasy.com/dumps/az-500/>

Money Back Guarantee

az-500 Practice Exam Features:

- * az-500 Questions and Answers Updated Frequently
- * az-500 Practice Questions Verified by Expert Senior Certified Staff
- * az-500 Most Realistic Questions that Guarantee you a Pass on Your FirstTry
- * az-500 Practice Test Questions in Multiple Choice Formats and Updatesfor 1 Year