



Cisco

Exam Questions 400-007

Cisco Certified Design Expert (CCDE v3.0) Written Exam

About ExamBible

Your Partner of IT Exam

Found in 1998

ExamBible is a company specialized on providing high quality IT exam practice study materials, especially Cisco CCNA, CCDA, CCNP, CCIE, Checkpoint CCSE, CompTIA A+, Network+ certification practice exams and so on. We guarantee that the candidates will not only pass any IT exam at the first attempt but also get profound understanding about the certificates they have got. There are so many alike companies in this industry, however, ExamBible has its unique advantages that other companies could not achieve.

Our Advances

* 99.9% Uptime

All examinations will be up to date.

* 24/7 Quality Support

We will provide service round the clock.

* 100% Pass Rate

Our guarantee that you will pass the exam.

* Unique Gurantee

If you do not pass the exam at the first time, we will not only arrange FULL REFUND for you, but also provide you another exam of your claim, ABSOLUTELY FREE!

NEW QUESTION 1

An enterprise that runs numerous proprietary applications has major issues with its on-premises server estate hardware, to the point where business-critical functions are compromised. The enterprise accelerates plans to migrate services to the cloud. Which cloud service should be used if the enterprise wants to avoid hardware issues yet have control of its applications and operating system?

- A. SaaS
- B. PaaS
- C. IaaS
- D. hybrid cloud

Answer: C

NEW QUESTION 2

Which three items do you recommend for control plane hardening of an infrastructure device? (Choose three.)

- A. redundant AAA servers
- B. Control Plane Policing
- C. warning banners
- D. to enable unused .services
- E. SNMPv3
- F. routing protocol authentication

Answer: BEF

NEW QUESTION 3

A network attacker exploits application flaws to compromise critical systems in the organization with these objectives:

- Obtain sensitive data and export the data out of the network.
- Compromise developer and administrator credentials to potentially

What is the next step after application discovery is completed in Zero Trust networkings

- A. Establish visibility and behavior modeling
- B. Enforce policies and microsegmentation.
- C. Assess real-time security health.
- D. Ensure trustworthiness of systems.

Answer: B

Explanation:

<https://www.cisco.com/c/en/us/solutions/collateral/enterprise/design-zone-security/zt-arch-guide.html>

NEW QUESTION 4

Company XYZ wants to improve the security design of their network to include protection from reconnaissance and DoS attacks on their sub interfaces destined toward next hop routers. Which technology can be used to prevent these types of attacks?

- A. MPP
- B. CPPr
- C. CoPP
- D. DPP

Answer: B

Explanation:

<https://learningnetwork.cisco.com/s/question/0D53i00000KsuyvCAB/copp-vs-cppr>

NEW QUESTION 5

Which two features are advantages of SD-WAN compared to MPLS-based connectivity? (Choose two.)

- A. uses FEC constructs for traffic forwarding, thereby improving efficiency
- B. separates infrastructure and policy
- C. uses policy-based forwarding of real-time traffic with less complexity
- D. unifies the WAN backbone
- E. manages failures through backup links

Answer: CD

NEW QUESTION 6

A network design includes a long signaling delay in notifying the Layer 3 control plane that an interface has failed Which two of these actions would reduce that delay? (Choose two.)

- A. Increase network stability.
- B. Reduce the time for the network to reconverge.
- C. Increase the notification of interface flaps.
- D. Enable lower data link layer recovery systems to have an opportunity to restore the interface

Answer: BD

NEW QUESTION 7

You are tasked with the design of a high available network. Which two features provide fail closed environments? (Choose two.)

- A. EIGRP
- B. RPVST+
- C. MST
- D. L2MP

Answer: AB

NEW QUESTION 8

Drag and drop the FCAPS network management reference models from the left onto the correct definitions on the right.

Fault Management	ensures that network transit quality remains at acceptable levels
Configuration Management	gathers usage statistics for users and business units
Accounting Management	gathers and stores configuration code from network devices
Performance Management	recognizes, isolates, corrects, and logs events that occur in the network
Security Management	controls access to assets in the network

- A. Mastered
- B. Not Mastered

Answer: A

Explanation:

Fault Management	= Recognize, isolates, corrects, and logs events that occur in the network
Configuration Management	= Gathers and stores configuration code from network devices
Performance Management	= ensures that network transit quality remains at acceptable laevels
Security Management	= Controls access to assets in the network
Accounting Management	= gathers usage statistics for users and business units

NEW QUESTION 9

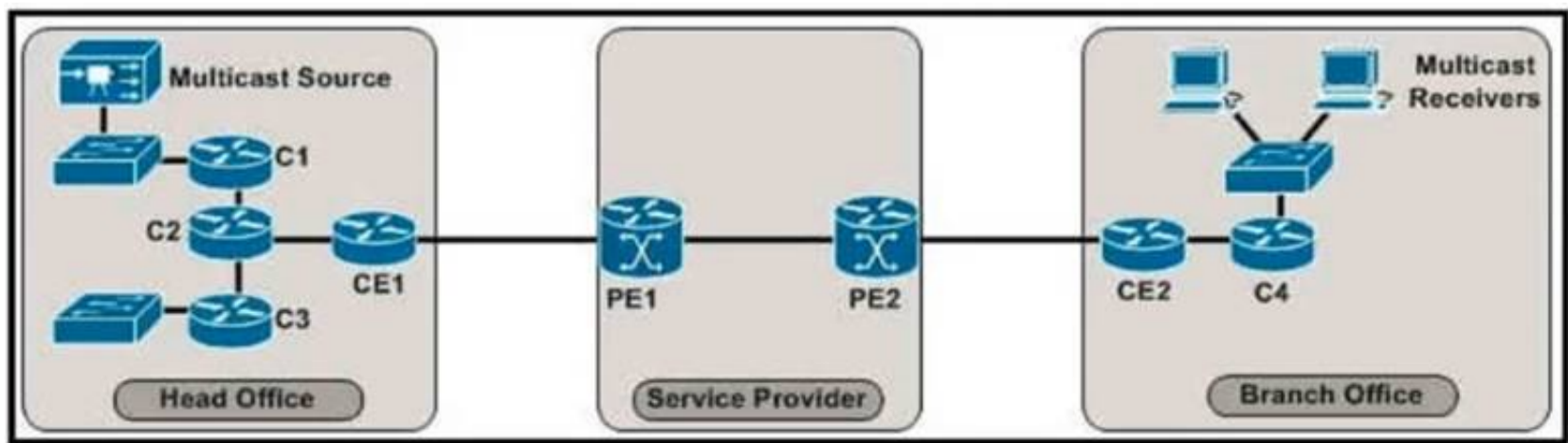
How can EIGRP topologies be designed to converge as fast as possible in the event of a point-to-point link failure?

- A. Limit the query domain by use of distribute lists.
- B. Build neighbor adjacencies in a triangulated fashion.
- C. Build neighbor adjacencies in squared fashion.
- D. Limit the query domain by use of summarization.
- E. Limit the query domain by use of default routes.

Answer: D

NEW QUESTION 10

Refer to the exhibit.



The enterprise customer wants to stream one-way video from their head office to eight branch offices using multicast. Their current service provider provides a Layer3 VPN solution and manages the CE routers, but they do not currently support multicast. Which solution quickly allows this multicast traffic to go through while allowing for future scalability?

- A. Enable a GRE tunnel between nodes CE1 and CE2
- B. Enable a GRE tunnel between nodes C2 and C4
- C. Enable a GRE tunnel between nodes C1 and C4
- D. Implement hub and spoke MPLS VPN over DMVPN (also known as 2547o DMVPN) between CE1 and CE2
- E. The service provider must provide a Draft Rosen solution to enable a GRE tunnel between nodes PE1 and PE2

Answer: B

NEW QUESTION 10

You are designing a network for a branch office. In order to improve convergence time, you are required to use the BFD feature Which four routing protocols can you use to facilitate this? (Choose four.)

- A. IS-IS
- B. static
- C. RIP
- D. EIGRP
- E. BGP

Answer: ABDE

NEW QUESTION 12

Which three components are part of the foundational information security principles of the CIA triad? (Choose three.)

- A. cryptography
- B. confidentiality
- C. authorization
- D. identification
- E. integrity
- F. availability

Answer: BEF

NEW QUESTION 15

Which extensions to GRE tunneling provide session tracking and in-order packet delivery in exchange for additional state stored in tunnel endpoints?

- A. GRE Protocol Type and Checksum extension fields.
- B. GRE Version and Reserved0 extension fields.
- C. No extension fields are available in the GRE header to track session data and packet sequences.
- D. GRE Key and Sequence number extensions.

Answer: D

NEW QUESTION 18

Which solution component helps to achieve comprehensive threat protection and compliance for migration to multicloud SDX architectures?

- A. system-oriented architecture
- B. OSASE architecture
- C. platform-oriented architecture
- D. SASE architecture

Answer: D

NEW QUESTION 21

Which technology supports antispoofing and does not have any impact on encryption performance regardless of packet size?

- A. MACsec
- B. IP source guard
- C. DHCP snooping with DAI
- D. IPsec

Answer: A

NEW QUESTION 23

Company XYZ has designed their network to run GRE over IPsec on their Internet-based VPN to connect two sites. Which IPsec tunneling feature can they enable to optimize the data flow while ensuring that the headers contain no duplicate IP addresses?

- A. Transport Mode in IPsec Phase I
- B. Transport Mode in IPsec Phase II
- C. Tunnel Mode in IPsec Phase II
- D. Tunnel Mode in IPsec Phase I

Answer: B

NEW QUESTION 24

In the case of outsourced IT services, the RTO is defined within the SLA. Which two support terms are often included in the SLA by IT and other service providers? (Choose two.)

- A. network size and cost
- B. support availability
- C. network sustainability
- D. network reliability
- E. resolution time

Answer: BE

NEW QUESTION 29

Company XYZ has 30 sites using MPLS L3 VPN and the company is now concerned about data integrity. The company wants to redesign the security aspect of their network based on these requirements:

- Securely transfer the corporate data over the private WAN
- Use a centralized configuration model.
- Minimize overhead on the tunneled traffic.

Which technology can be used in the new design to meet the company's requirements?

- A. S-VTI
- B. DMVPN
- C. MGRE
- D. GET VPN

Answer: D

NEW QUESTION 30

Which design principal improves network resiliency?

- A. Added load-balancing
- B. Added redundancy
- C. Added confidentiality
- D. Added reliability

Answer: B

NEW QUESTION 31

You have been asked to design a high-density wireless network for a university campus. Which two principles would you apply in order to maximize the wireless network capacity? (Choose two.)

- A. Implement a four-channel design on 2.4 GHz to increase the number of available channels
- B. Choose a high minimum data rate to reduce the duty cycle.
- C. increases the number of SSIDs to load-balance the client traffic.
- D. Make use of the 5-GHz band to reduce the spectrum utilization on 2.4 GHz when dual-band clients are used.
- E. Enable 802.11n channel bonding on both 2.4 GHz and 5 GHz to increase the maximum aggregated cell throughput.

Answer: BD

NEW QUESTION 35

A healthcare customer requested that SNMP traps must be sent over the MPLS Layer 3 VPN service. Which protocol must be enabled?

- A. SNMPv3
- B. Syslog
- C. Syslog TLS
- D. SNMPv2
- E. SSH

Answer: A

NEW QUESTION 37

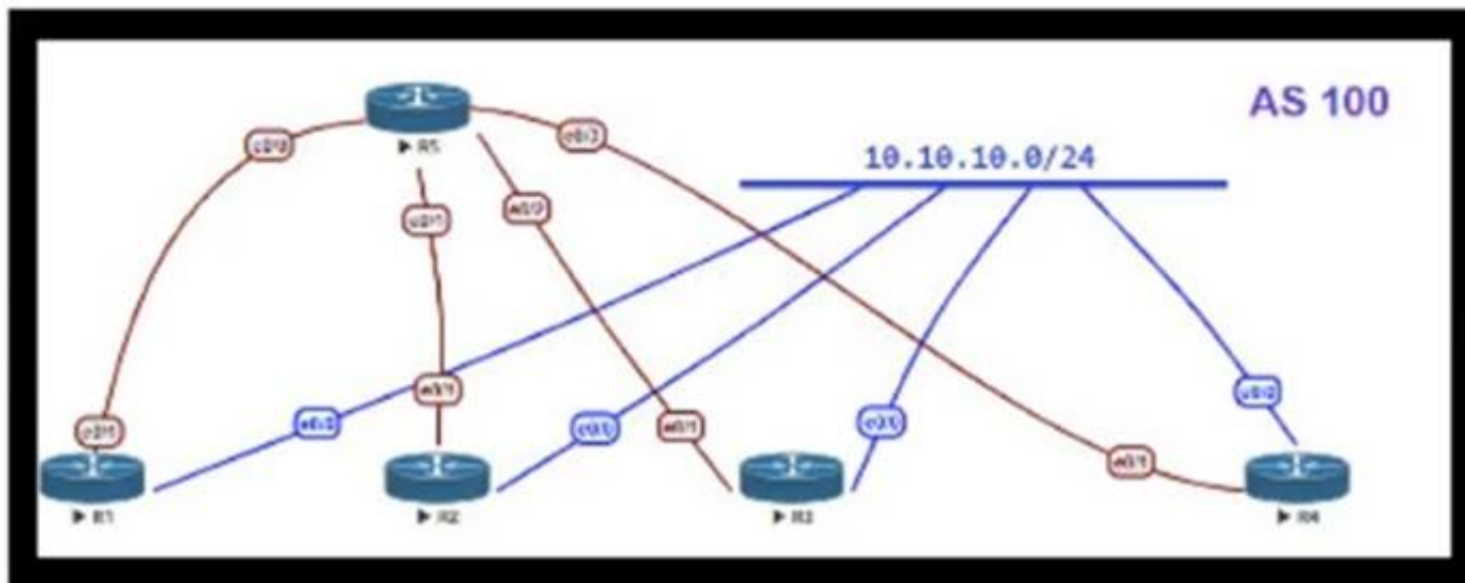
Which development model is closely associated with traditional project management?

- A. static model
- B. Agile model
- C. evolutionary delivery model
- D. lifecycle model

Answer: C

NEW QUESTION 39

Refer to the exhibit.



OSPF is running as the IGP to provide reachability to all AS100 networks R3 and R4 are the current ABRs at the boundary of OSPF Area0 and Area1 Now BGP must be deployed within AS 100 because it will be receiving Internet routes from its eBGP peers (the service provider) connected to R1 and R2 What is an optimal solution for this deployment to configure BGP relationships and redistribute BGP learned routes into OSPF?

- A. R5 should be configured as a route reflector for R1, R2, R3 and R4. BGP routes must be redistributed at R1 and R2 into OSPF.
- B. Configuration should be set up with R1 and R2, and R3 in one sub AS, with and R4 in another, and redistribution at R1 and R2.
- C. A full mesh should be deployed between all the routers with mutual redistribution to take place at R1 and R2.
- D. R1, R2, R3 and R4 must be set up with a neighbor relationship with R5 only must not be a routereflector.

Answer: C

NEW QUESTION 43

You are designing an Out of Band Cisco Network Admission Control. Layer 3 Real-IP Gateway deployment for a customer Which VLAN must be trunked back to the Clean Access Server from the access switch?

- A. authentication VLAN
- B. user VLAN
- C. untrusted VLAN
- D. management VLAN

Answer: D

NEW QUESTION 48

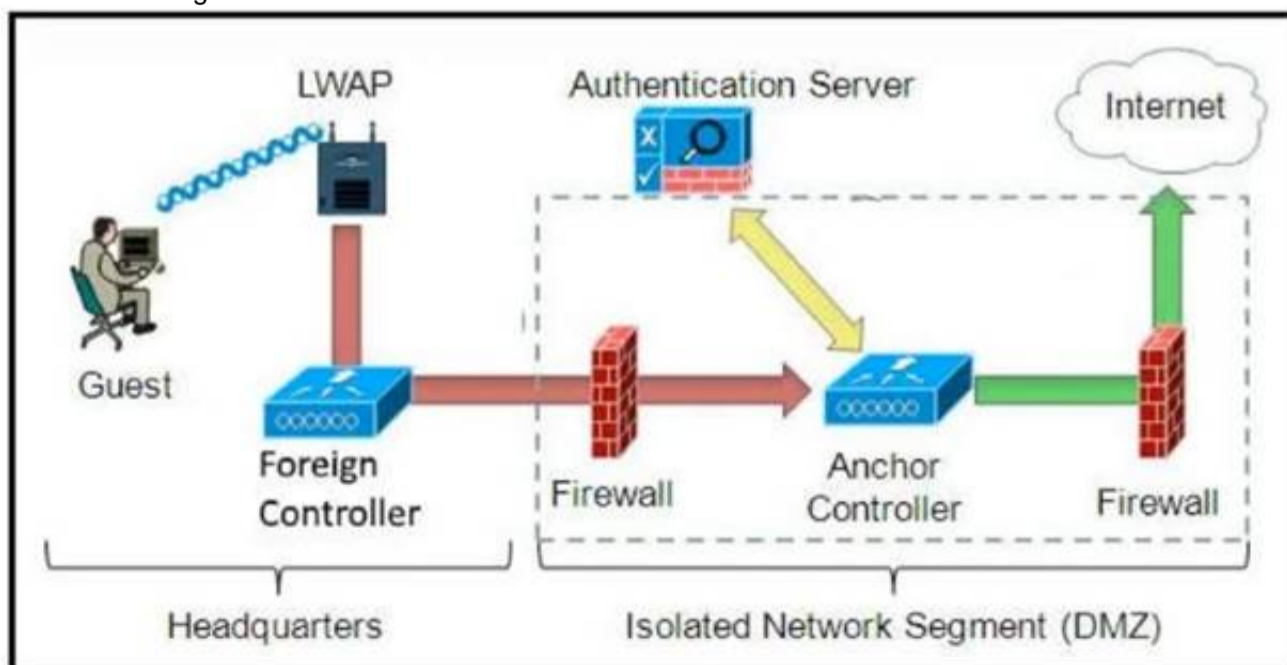
Which two data plane hardening techniques are true? (Choose two)

- A. warning banners
- B. redundant AAA servers
- C. Control Plane Policing
- D. SNMPv3
- E. infrastructure ACLs
- F. disable unused services
- G. routing protocol authentication

Answer: EF

NEW QUESTION 53

Refer to the diagram.



Which solution must be used to send traffic from the foreign wireless LAN controller to the anchor wireless LAN controller?

- A. Send packets from the foreign controller to the anchor controller via Layer 3 MPLS VPN or VRF-Lite
- B. Send packets without encapsulation to the anchor controller over the routed network.
- C. Encapsulate packets into an EoIP tunnel and send them to the anchor controller.
- D. Send packets from the foreign controller to the anchor controller via IPinIP or IPsec tunnel.

Answer: C

NEW QUESTION 57

The network team in XYZ Corp wants to modernize their infrastructure and is evaluating an implementation and migration plan to allow integration MPLS-based, Layer 2 Ethernet services managed by a service provider to connect branches and remote offices. To decrease OpEx and improve response times when network components fail, XYZ Corp decided to acquire and deploy new routers. The network currently is operated over E1 leased lines (2 Mbps) with a managed CE service provided by the telco.

Drag and drop the implementation steps from the left onto the corresponding targets on the right in the correct order.

Activation of the MPLS-based L2VPN service.	Step 1
Monitor performance of the Ethernet service for a predefined period of time.	Step 2
Decomission E1 leased line.	Step 3
Deployment of new branch routers.	Step 4
Test and validation of SLA parameters in the L2VPN.	Step 5
Migrate E1 to the new Ethernet service.	Step 6

- A. Mastered
- B. Not Mastered

Answer: A

Explanation:

Table Description automatically generated

NEW QUESTION 61

A European government passport agency considers upgrading its IT systems to increase performance and workload flexibility in response to constantly changing requirements. The budget manager wants to reduce capital expenses and IT staff and must adopt the lowest-cost technology. Which technology choice is suitable?

- A. on premises
- B. private cloud
- C. public cloud
- D. hybrid cloud

Answer: B

NEW QUESTION 63

Company XYZ, a global content provider, owns data centers on different continents. Their data center design involves a standard three-layer design with a Layer 3-only core. HSRP is used as the FHRP. They require VLAN extension across access switches in all data centers, and they plan to purchase a Layer 2 interconnection between two of their data centers in Europe. In the absence of other business or technical constraints, which termination point is optimal for the Layer 2 interconnection?

- A. at the core layer, to otter the possibility to isolate STP domains
- B. at me aggregation layer because it is the Layer 2 to Layer 3 demarcation point
- C. at the access layer because the STP root bridge does not need to align with the HSRP active node.
- D. at the core layer because all external connections must terminate there for security reasons

Answer: B

NEW QUESTION 66

Company XYZ Is running a redundant private WAN network using OSPF as the underlay protocol The current design accommodates for redundancy In the network, but it Is taking over 30 seconds for the network to reconverge upon failure Which technique can be Implemented In the design to detect such a failure in a subsecond?

- A. STP
- B. fate sharing
- C. OSPF LFA
- D. BFD
- E. flex links

Answer: D

NEW QUESTION 71

The network designer needs to use GLOP IP addresses in order to make them unique within their ASN Which multicast address range should be used?

- A. 232.0.0.0 to 232.255.255.255
- B. 233.0.0.0 to 233.255.255.255
- C. 239.0.0.0 to 239.255.255.255
- D. 224.0.0.0 to 224.255.255.255

Answer: B

NEW QUESTION 73

An architect prepares a network design for a startup company. The design must be able to meet business requirements while the business grows and divests due to rapidly changing markets. What is the highest priority in this design?

- A. The network should be hierarchical
- B. The network should be modular.
- C. The network should be scalable.
- D. The network should have a dedicated core.

Answer: A

NEW QUESTION 77

Which two actions ensure voice quality in a branch location with a low-speed, high-latency WAN connection? (Choose two.)

- A. Increase WAN bandwidth
- B. Increase memory branch switch.
- C. Fragment data packets.
- D. Replace any electrical links with optical links
- E. Prioritize voice packets

Answer: CE

NEW QUESTION 80

A network architect must redesign a service provider edge, where multiservice and multitenant PEs are currently present. Which design feature should be minimized in the new design to achieve reliability?

- A. bridging
- B. state sharing
- C. redundancy
- D. unicast overlay routing

Answer: B

NEW QUESTION 85

A senior network designer suggests that you should improve network convergence times by reducing BGP timers between your CE router and the PE router of the service provider. Which two factors should you consider to adjust the timer values? (Choose two.)

- A. service provider agreement to support tuned timers
- B. manual updates to the peer groups
- C. service provider scheduling of changes to the PE
- D. number of routes on the CE router
- E. number of VRFs on the PE router

Answer: AD

NEW QUESTION 88

Which function is performed at the access layer of the three-layer hierarchical network design model?

- A. fault isolation
- B. QoS classification and marking boundary
- C. reliability
- D. fast transport
- E. redundancy and load balancing

Answer: B

NEW QUESTION 91

Company XYZ is designing their network using the three-layer hierarchical model. At which layer must the QoS design classify or mark the traffic?

- A. access
- B. core
- C. collapsed core
- D. distribution

Answer: A

NEW QUESTION 96

Organizations that embrace Zero Trust initiatives ranging from business policies to technology infrastructure can reap business and security benefits. Which two domains should be covered under Zero Trust initiatives? (Choose two)

- A. workload
- B. work domain
- C. workplace
- D. workgroup
- E. workspace

Answer: AC

NEW QUESTION 98

A company requires an RPO of less than 10 seconds to ensure business continuity. Which technology should be deployed?

- A. geographically dispersed data centers with asynchronous replication
- B. a single data center with duplicated infrastructure, dual PSUs, and a UPS
- C. geographically dispersed data centers with synchronous replication
- D. a single data center with duplicated infrastructure and dual PSUs

Answer: C

NEW QUESTION 100

You are tasked to design a QoS policy for a service provider so they can include it in the design of their MPLS core network. If the design must support an MPLS network with six classes, and CEs will be managed by the service provider, which QoS policy should be recommended?

- A. map IP CoS bits into the IP Precedence field
- B. map flow-label bits into the Exp field
- C. map IP precedence bits into the DSCP field
- D. map DSCP bits into the Exp field

Answer: D

NEW QUESTION 102

You want to mitigate failures that are caused by STP loops that occur before UDLD detects the failure or that are caused by a device that is no longer sending BPDUs. Which mechanism do you use along with UDLD?

- A. Root guard
- B. BPDU guard
- C. Loop guard
- D. BPDU filtering

Answer: C

NEW QUESTION 103

Which parameter is the most important factor to consider when deciding service placement in a cloud solution?

- A. data replication cost
- B. application structure
- C. security framework Implementation time
- D. data confidentiality rules

Answer: D

NEW QUESTION 106

Company ABC wants to minimize the risk of users plugging unauthorized switches and hubs into the network. Which two features can be used on the LAN access ports to support this design requirement? (Choose two.)

- A. Loop Guard
- B. PortFast
- C. DTF
- D. Root Guard
- E. BPDU Guard

Answer: BE

NEW QUESTION 111

You are designing the routing design for two merging companies that have overlapping IP address space. Which of these must you consider when developing the routing and NAT design?

- A. Local to global NAT translation is done after routing
- B. Global to local NAT translation is done before routing.
- C. Local to global NAT translation is done before policy-based routing
- D. Global to local NAT translation is done after policy-based routing.

Answer: B

NEW QUESTION 114

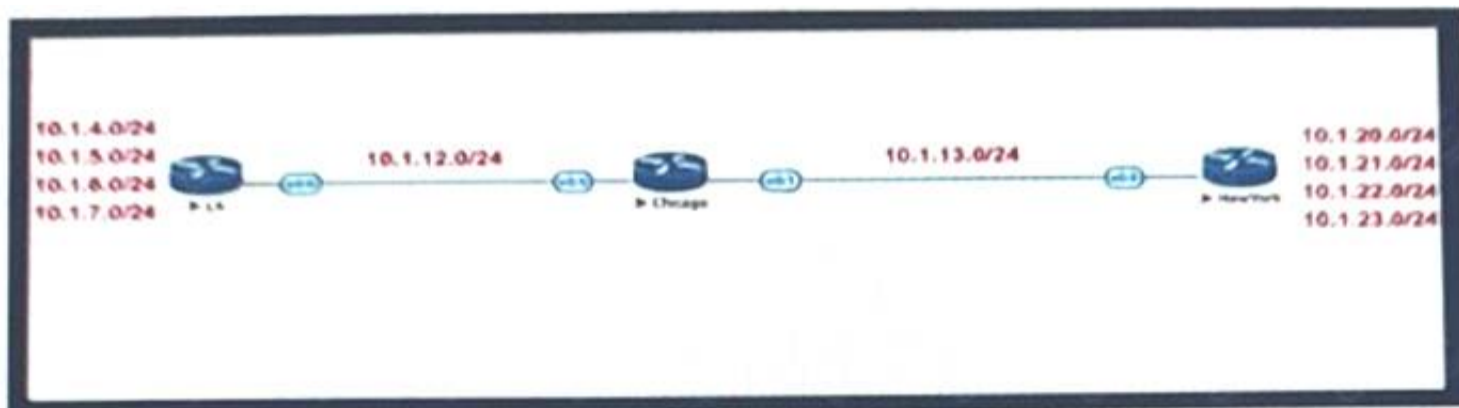
According to the CIA triad principles for network security design, which principle should be priority for a Zero Trust network?

- A. requirement for data-in-motion encryption and 2FA authentication
- B. requirement for data-at-rest encryption for user identification within the VPN termination hardware
- C. categorization of systems, data, and enterprise BYOD assets that are connected to network zones based on individual privacy needs
- D. ensuring that authorized users have high-availability system access from defined zones to defined systems or zones

Answer: A

NEW QUESTION 115

Refer to the exhibit.



Company XYZ BGP topology is as shown in the diagram. The interface on the LA router connected toward the 10.1.5.0/24 network is faulty and is going up and down, which affects the entire routing domain. Which routing technique can the network administrator use so that the rest of the network is not affected by the flapping issue?

- A. The LA administrator should use route aggregation to summarize the 10.1.4.0/24, 10.1.5.0/24, 10.1.6.0/24, and 10.1.7.0/24 networks toward Chicago
- B. The LA administrator should use route dampening for the 10.1.5.0/24 network so that it does not get propagated when it flaps up and down.
- C. The LA administrator should use route filtering to block the 10.1.5.0/24 network from getting propagated toward Chicago and New York.
- D. The Chicago administrator should use route filtering to block the 10.1.5.0/24 network from coming in from the LA router.

Answer: B

NEW QUESTION 120

A legacy enterprise is using a Service Provider MPLS network to connect its head office and branches. Recently, they added a new branch to their network. Due to physical security concerns, they want to extend their existing IP CCTV network of the head office to the new branch, without any routing changes in the network. They are also under some time constraints. What is the best approach to extend the existing IP CCTV network to the new branch, without incurring any IP address changes?

- A. L2TPv3
- B. VXLAN
- C. EoMPLS

Answer: B

NEW QUESTION 125

Which two conditions must be met for EIGRP to maintain an alternate loop-free path to a remote network? (Choose two.)

- A. The Reported Distance from a successor is lower than the local Feasible Distance.
- B. The Reported Distance from a successor is higher than the local Feasible Distance.
- C. The feasibility condition does not need to be met.
- D. The Feasible Distance from a successor is lower than the local Reported Distance.
- E. A feasible successor must be present.

Answer: AE

NEW QUESTION 127

Company XYZ needs advice in redesigning their legacy Layer 2 infrastructure. Which technology should be included in the design to minimize or avoid convergence delays due to STP or FHRP and provide a loop-free topology?

- A. Use switch clustering in the access layer.
- B. Use switch clustering in the core/distribution layer.
- C. Use spanning-tree PortFast.
- D. Use BFD.

Answer: B

NEW QUESTION 129

Company XYZ has two routing domains in their network, EIGRP and OSPF. The company wants to provide full reachability between the two domains by implementing redistribution on a router running both protocols. They need to design the redistribution in a way that the OSPF routers will see link costs added to external routes. How must the redistribution strategy be designed for this network?

- A. Redistribute using metric type 2 into OSPF.
- B. Redistribute using metric type 1 into OSPF.

- C. Redistribute using metric type 1 into EIGRP.
- D. Redistribute using metric type 2 into EIGRP.

Answer: B

Explanation:

[https://www.ciscopress.com/articles/article.asp?p=27573&seqNum=4#:~:text=Routes%20are%20redistributed%](https://www.ciscopress.com/articles/article.asp?p=27573&seqNum=4#:~:text=Routes%20are%20redistributed%20)

NEW QUESTION 134

An enterprise solution team is performing an analysis of multilayer architecture and multicontroller SDN solutions for multisite deployments. The analysis focuses on the ability to run tasks on any controller via a standardized interface. Which requirement addresses this ability on a multicontroller platform?

- A. Deploy a root controller to gather a complete network-level view.
- B. Use the East-West API to facilitate replication between controllers within a cluster.
- C. Build direct physical connectivity between different controllers.
- D. Use OpenFlow to implement and adapt new protocols.

Answer: D

NEW QUESTION 135

Which two actions must merchants do to be compliant with the Payment Card Industry Data Security Standard? (Choose two.)

- A. conduct risk analyses
- B. install firewalls
- C. use antivirus software
- D. establish monitoring policies
- E. establish risk management policies

Answer: BC

NEW QUESTION 137

Drag and drop the characteristics from the left onto the corresponding network management options on the right.

protocol based on HTTP for configuring data defined in YANG and supports operations such as GET, PUT, POST, PATCH, and DELETE	NETCONF
provides mechanisms to install, manipulate, and delete the configuration of network devices; uses XML for data encoding and the operation is realized as RPC	RESTCONF
application program interface that uses HTTP requests to GET, PUT, POST, and DELETE data	ANSIBLE
open-source software provisioning, configuration management, and application-deployment tool	YANG
data modeling language used to model configuration data, state data, remote procedure calls, and notifications for network management protocols	REST API

- A. Mastered
- B. Not Mastered

Answer: A

Explanation:

Text Description automatically generated

NEW QUESTION 142

SD-WAN can be used to provide secure connectivity to remote offices, branch offices, campus networks, data centers, and the cloud over any type of IP-based underlay transport network. Which two statements describe SD WAN solutions? (Choose two.)

- A. SD-WAN networks are inherently protected against slow performance.
- B. Control and data forwarding planes are kept separate.
- C. Improved operational efficiencies result in cost savings.
- D. Solutions include centralized orchestration, control, and zero-touch provisioning.
- E. Solutions allow for variations of commodity and specialized switching hardware.

Answer: BD

NEW QUESTION 144

A business customer deploys workloads in the public cloud. Now the customer network faces governance issues with the flow of IT traffic and must ensure the security of data and intellectual property. Which action helps to identify the issue for further resolution?

- A. Set up a secure tunnel from customer routers to ensure that traffic is protected as it travels to the cloud service providers.
- B. Send IPFIX telemetry data from customer routers to a centralized collector to identify traffic to cloud service providers
- C. Build a zone-based firewall policy on Internet edge firewalls that collects statistics on traffic sent to cloud service providers
- D. Apply workload policies that dictate the security requirements to the workloads that are placed in the cloud.

Answer: B

NEW QUESTION 147

Which two mechanisms avoid suboptimal routing in a network with dynamic mutual redistribution between multiple OSPFv2 and EIGRP boundaries? (Choose two.)

- A. AD manipulation
- B. matching OSPF external routes
- C. route tagging
- D. route tagging
- E. route filtering
- F. matching EIGRP process ID

Answer: DE

Explanation:

<https://www.cisco.com/c/en/us/support/docs/ip/enhanced-interior-gateway-routing-protocol-eigrp/8606-redist.ht>

NEW QUESTION 151

Which three tools are used for ongoing monitoring and maintenance of a voice and video environment? (Choose three.)

- A. flow-based analysis to measure bandwidth mix of applications and their flows
- B. call management analysis to identify network convergence-related failures
- C. call management analysis to identify CAC failures and call quality issues
- D. active monitoring via synthetic probes to measure loss, latency, and jitter
- E. passive monitoring via synthetic probes to measure loss, latency, and jitter
- F. flow-based analysis with PTP time-stamping to measure loss, latency, and jitter

Answer: ACD

NEW QUESTION 155

Which two factors provide multifactor authentication for secure access to applications and data, no matter where the users are or which devices they are on? (Choose two.)

- A. persona-based
- B. power-based
- C. push-based
- D. possession-based
- E. pull-based

Answer: CD

NEW QUESTION 158

The administrator of a small branch office wants to implement the Layer 2 network without running STP. The office has some redundant paths. Which mechanism can the administrator use to allow redundancy without creating Layer 2 loops?

- A. Use double-sided VPC on both switches
- B. Use two port channels as Flex links
- C. Use fabric path with ECMP
- D. Use 802.3ad link bundling.

Answer: B

NEW QUESTION 162

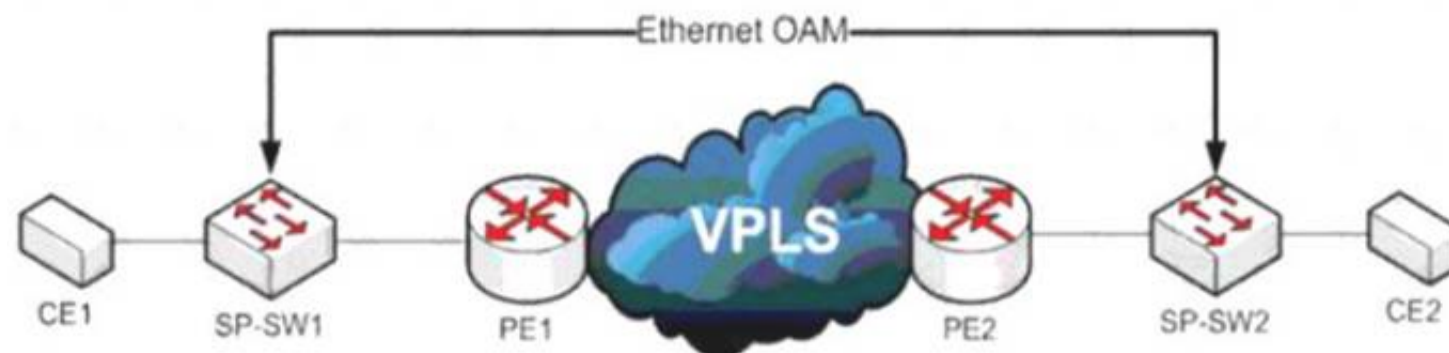
Which two foundational aspects of IoT are still evolving and being worked on by the industry at large? (Choose two)

- A. WiFi protocols
- B. Regulatory domains
- C. Low energy Bluetooth sensors
- D. IoT consortia
- E. Standards

Answer: AC

NEW QUESTION 166

Refer to the exhibit



A service provider has a requirement to use Ethernet OAM to detect end-to-end connectivity failures between SP-SW1 and SP-SW2. Which two ways to design this solution are true? (Choose two)

- A. Enable unicast heartbeat messages to be periodically exchanged between MEPs
- B. Enable Connectivity Fault Management on the SP switches
- C. Use upward maintenance endpoints on the SP switches
- D. Forward E-LMI PDUs over VPLS
- E. Forward LLD PDUs over the VPLS

Answer: BC

NEW QUESTION 169

Which two advantages of using DWDM over traditional optical networks are true? (Choose two.)

- A. inherent topology flexibility and service protection provided without penalty through intelligent oversubscription of bandwidth reservation
- B. ability to expand bandwidth over existing optical infrastructure
- C. inherent topology flexibility with built-in service protection
- D. inherent topology flexibility with intelligent chromatic dispersion
- E. inherent topology flexibility with a service protection provided through a direct integration with an upper layer protocol

Answer: BC

NEW QUESTION 170

Which three Cisco products are used in conjunction with Red Hat to provide an NFVi solution? (Choose three.)

- A. Cisco Prime Service Catalog
- B. Cisco Open Virtual Switch
- C. Cisco Nexus switches
- D. Cisco UCS
- E. Cisco Open Container Platform
- F. Cisco Virtual Network Function

Answer: CDF

NEW QUESTION 175

Company XYZ is designing the network for IPv6 security and they have these design requirements:

- > A switch or router must deny access to traffic from sources with addresses that are correct, but are topologically incorrect
- > Devices must block Neighbor Discovery Protocol resolution for destination addresses that are not found in the binding table.

Which two IPv4 security features are recommended for this company? (Choose two)

- A. IPv6 DHCP Guard
- B. IPv6 Source Guard
- C. IPv6 Destination Guard
- D. IPv6 Prefix Guard
- E. IPv6 RA Guard

Answer: CD

Explanation:

https://www.cisco.com/c/dam/global/ja_jp/td/docs/ios-xml/ios/ipv6_fhsec/configuration/xe-16/ip6f-xe-16-book.

NEW QUESTION 180

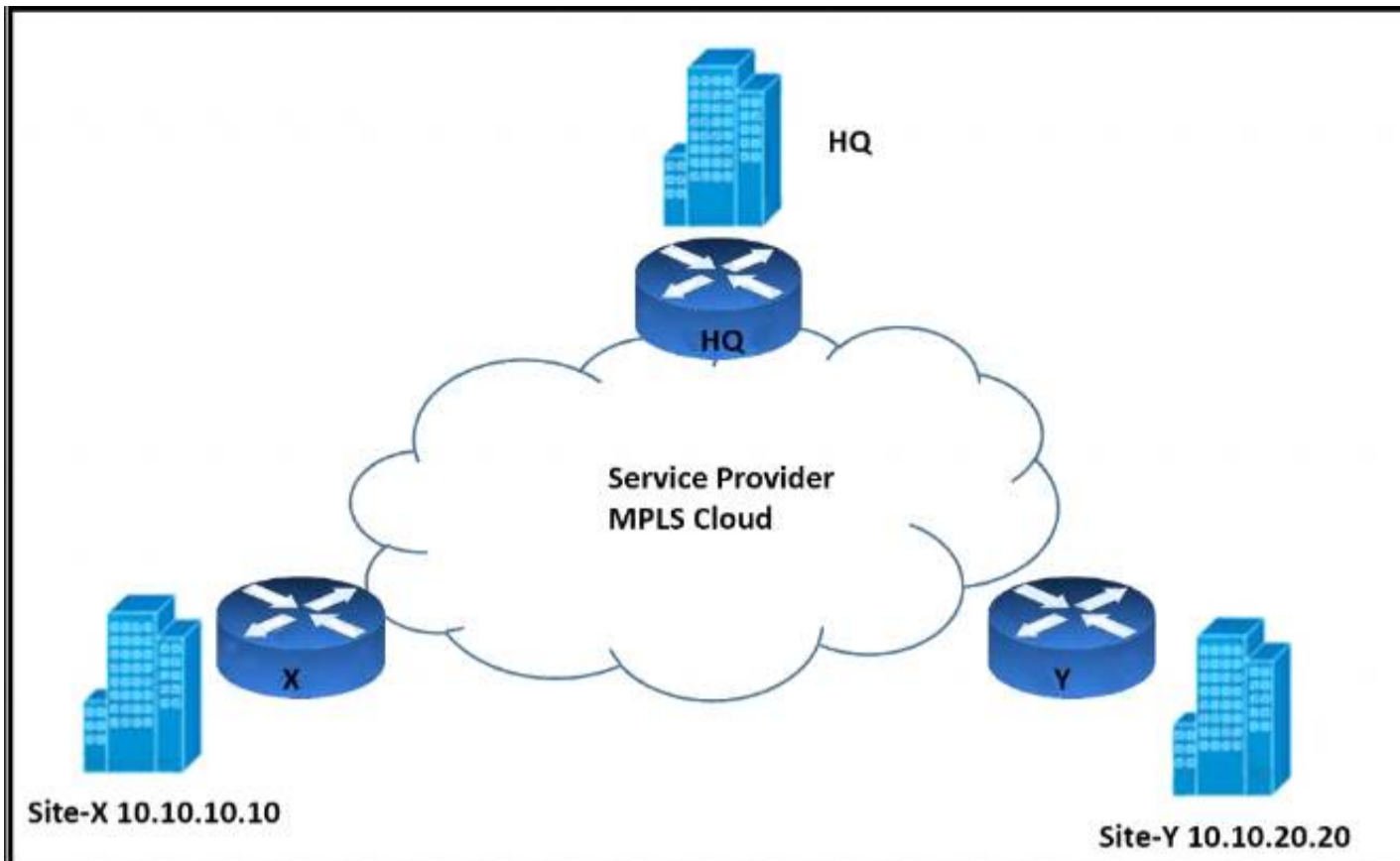
Which architecture does not require an explicit multicast signaling protocol, such as PIM or P2MP, to signal the multicast state hop-by-hop, but instead uses a link state protocol to advertise the multicast forwarding state?

- A. Binary indexed explicit routing
- B. Binary intermediate enhanced routing
- C. Bit indexed explicit replication
- D. Bi-directional implicit replication

Answer: C

NEW QUESTION 184

Refer to the exhibit.



An architect must design an enterprise WAN that connects the headquarters with 22 branch offices. The number of remote sites is expected to triple in the next three years. The final solution must comply with these requirements:

- Only the loopback address of each of the enterprise CE X and Y routers must be advertised to the interconnecting service provider cloud network.
- The transport layer must carry the VPNv4 label and VPN payload over the MP-BGP control plane.
- The transport layer must not be under service provider control.

Which enterprise WAN transport virtualization technique meets the requirements?

- A. EIGRP Over the Top
- B. MPLS over BGP over multipoint GRE
- C. DMVPN per VRF
- D. point-to-point GRE per VRF

Answer: B

NEW QUESTION 187

Drag and drop the design use cases from the left onto the correct uRPF techniques used to prevent spoofing attacks. Not all options are used.

to check whether a route to a given IP address exists without regard to its incoming interface	strict mode
to filter Bogon IP addresses	feasible mode
to ensure the incoming interface is the best reverse path to a given IP address	loose mode
when there are alternate routes to a given IP address	

- A. Mastered
- B. Not Mastered

Answer: A

Explanation:

to check whether a route to a given IP address exists without regard to its incoming interface	to ensure the incoming interface is the best reverse path to a given IP address
to filter Bogon IP addresses	when there are alternate routes to a given IP address
to ensure the incoming interface is the best reverse path to a given IP address	to filter Bogon IP addresses
when there are alternate routes to a given IP address	

NEW QUESTION 188

What advantage of placing the IS-IS layer 2 flooding domain boundary at the core Layer in a three-layer hierarchical network is true?

- A. The Layer 1 and Layer 2 domains can easily overlap
- B. It reduces the complexity of the Layer 1 domains
- C. It can be applied to any kind of topology
- D. The Layer 2 domain is contained and more stable

Answer: D

NEW QUESTION 192

.....

Relate Links

100% Pass Your 400-007 Exam with ExamBible Prep Materials

<https://www.exambible.com/400-007-exam/>

Contact us

We are proud of our high-quality customer service, which serves you around the clock 24/7.

Viste - <https://www.exambible.com/>