

## PMP Dumps

### Project Management Professional

<https://www.certleader.com/PMP-dumps.html>



**NEW QUESTION 1**

- (Topic 1)

Which of the following is an example of contract administration?

- A. Negotiating the contract
- B. Authorizing contractor work
- C. Developing the statement of work
- D. Establishing evaluation criteria

**Answer: B**

**NEW QUESTION 2**

- (Topic 1)

In the Plan Stakeholder Management process, expert judgment is used to:

- A. Provide information needed to plan appropriate ways to engage project stakeholders.
- B. Ensure comprehensive identification and listing of new stakeholders.
- C. Analyze the information needed to develop the project scope statement.
- D. Decide the level of engagement of the stakeholders at each required stage.

**Answer: D**

**NEW QUESTION 3**

- (Topic 1)

What is the risk rating if the probability of occurrence is 0.30 and the impact if it does occur is moderate (0.20)?

- A. 0.03
- B. 0.06
- C. 0.10
- D. 0.50

**Answer: B**

**NEW QUESTION 4**

- (Topic 1)

What is the most accurate rough order of magnitude (ROM)?

- A. In the Initiation phase, the estimate is in the range of +/- 50%.
- B. In the Planning phase, the estimate is in the range of +/- 50%.
- C. In the Monitoring and Controlling phase, the estimate is in the range of +/- 15%.
- D. In the Closing phase, the estimate is in the range of +/- 15%.

**Answer: A**

**NEW QUESTION 5**

- (Topic 1)

Which type of analysis is used as a general management technique within the Plan Procurements process?

- A. Risk assessment analysis
- B. Make or buy analysis
- C. Contract value analysis
- D. Cost impact analysis

**Answer: B**

**NEW QUESTION 6**

- (Topic 1)

The initial development of a Project Scope Management plan uses which technique?

- A. Alternatives identification
- B. Scope decomposition
- C. Expert judgment
- D. Product analysis

**Answer: C**

**NEW QUESTION 7**

- (Topic 1)

Monte Carlo is which type of risk analysis technique?

- A. Probability
- B. Quantitative
- C. Qualitative
- D. Sensitivity

**Answer:** B

**NEW QUESTION 8**

- (Topic 1)

Which of the following tools and techniques is used in the Develop Project Team process?

- A. Acquisitions
- B. Organizational theories
- C. Team-building activities
- D. Virtual teams

**Answer:** C

**NEW QUESTION 9**

- (Topic 1)

Which of the following is an input to the Qualitative Risk Analysis process?

- A. Risk register
- B. Risk data quality assessment
- C. Risk categorization
- D. Risk urgency

**Answer:** A

**NEW QUESTION 10**

- (Topic 1)

What tool and technique is used to determine whether work and deliverables meet requirements and product acceptance criteria?

- A. Decomposition
- B. Benchmarking
- C. Inspection
- D. Checklist analysis

**Answer:** C

**NEW QUESTION 10**

- (Topic 1)

Which input to the Manage Stakeholder Engagement process provides guidance on how stakeholders can best be involved in a project?

- A. Feedback analysis
- B. Stakeholder analysis
- C. Communication management plan
- D. Stakeholder management plan

**Answer:** D

**NEW QUESTION 11**

- (Topic 1)

Which statement correctly describes the value of a business case?

- A. It provides the necessary information to determine if a project is worth the required investment.
- B. It provides for alternative dispute resolution procedures in event of contract default.
- C. It offers one of several alternative scenarios which assist in performing qualitative risk analysis.
- D. It is used to help a project manager understand the scope of commercial advantages.

**Answer:** A

**NEW QUESTION 13**

- (Topic 1)

In which process is a project manager identified and given the authority to apply resources to project activities?

- A. Acquire Project Team
- B. Develop Project Management Plan
- C. Manage Project Execution
- D. Develop Project Charter

**Answer:** D

**NEW QUESTION 14**

- (Topic 1)

Project contracts generally fall into which of the following three broad categories?

- A. Fixed-price, cost reimbursable, time and materials
- B. Make-or-buy, margin analysis, fixed-price
- C. Time and materials, fixed-price, margin analysis

D. Make-or-buy, lump-sum, cost-plus-incentive

**Answer:** A

**NEW QUESTION 19**

- (Topic 1)

Project Stakeholder Management focuses on:

- A. project staff assignments
- B. project team acquisition
- C. managing conflicting interests
- D. communication methods

**Answer:** C

**NEW QUESTION 22**

- (Topic 1)

Which Knowledge Area involves identifying the people, groups, or organizations that may be impacted by or impact a project?

- A. Project Risk Management
- B. Project Human Resource Management
- C. Project Scope Management
- D. Project Stakeholder Management

**Answer:** D

**NEW QUESTION 24**

- (Topic 1)

Plan Communications Management develops an approach and plan for project communications based on stakeholders' needs and requirements and:

- A. Available organizational assets
- B. Project staff assignments
- C. Interpersonal skills
- D. Enterprise environmental factors

**Answer:** A

**NEW QUESTION 26**

- (Topic 1)

Organizations perceive risks as:

- A. events that will inevitably impact project and organizational objectives.
- B. the effect of uncertainty on their project and organizational objectives.
- C. events which could have a negative impact on project and organizational objectives.
- D. the negative impact of undesired events on their project and organizational objectives.

**Answer:** B

**NEW QUESTION 30**

- (Topic 1)

The product scope description is used to:

- A. Gain stakeholders support for the project.
- B. Document the characteristics of the product.
- C. Describe the project in great detail.
- D. Formally authorize the project.

**Answer:** B

**NEW QUESTION 35**

- (Topic 1)

Which of the following processes includes prioritizing risks for subsequent further analysis or action by assessing and combining their probability of occurrence and impact?

- A. Qualitative risk analysis
- B. Quantitative risk analysis
- C. Risk management planning
- D. Risk response planning

**Answer:** A

**NEW QUESTION 38**

- (Topic 1)

Which item is an example of personnel assessment?

- A. Resource calendar
- B. Tight matrix
- C. Team-building activity
- D. Focus group

**Answer:** D

**NEW QUESTION 40**

- (Topic 1)

Soft logic is also known as what type of dependency?

- A. External
- B. Discretionary
- C. Mandatory
- D. Internal

**Answer:** B

**NEW QUESTION 45**

- (Topic 1)

Risk responses reflect an organization's perceived balance between:

- A. risk taking and risk avoidance.
- B. known risk and unknown risk.
- C. identified risk and analyzed risk.
- D. varying degrees of risk.

**Answer:** A

**NEW QUESTION 47**

- (Topic 1)

Which process uses occurrence probability and impact on project objectives to assess the priority of identified risks?

- A. Identify Risks
- B. Perform Qualitative Risk Analysis
- C. Plan Risk Management
- D. Perform Quantitative Risk Analysis

**Answer:** B

**NEW QUESTION 51**

- (Topic 1)

Which is an enterprise environmental factor?

- A. Marketplace conditions
- B. Policies and procedures
- C. Project files from previous projects
- D. Lessons learned from previous projects

**Answer:** A

**NEW QUESTION 55**

- (Topic 1)

Which of the following investigates the likelihood that each specific risk will occur?

- A. Risk register
- B. Risk audits
- C. Risk urgency assessment
- D. Risk probability and impact assessment

**Answer:** D

**NEW QUESTION 57**

- (Topic 1)

Assigned risk ratings are based upon:

- A. Root cause analysis.
- B. Risk probability and impact assessment.
- C. Expert judgment.
- D. Revised stakeholders' tolerances.

**Answer:** B

**NEW QUESTION 59**

- (Topic 1)

Which of the following correctly explains the term "progressive elaboration"?

- A. Changing project specifications continuously
- B. Elaborate tracking of the project progress
- C. Elaborate tracking of the project specifications with a change control system
- D. Project specifications becoming more explicit and detailed as the project progresses

**Answer:** D

#### NEW QUESTION 64

- (Topic 1)

Which characteristics do effective project managers possess?

- A. Project management knowledge, performance skills, and personal effectiveness
- B. Preparedness, project management knowledge, and personality characteristics
- C. General management, preparedness, and project management knowledge
- D. Assertiveness, collaboration, and performance skills

**Answer:** A

#### NEW QUESTION 69

- (Topic 1)

The project charter is an input to which process?

- A. Develop Project Charter
- B. Develop Project Management Plan
- C. Monitor and Control Project Work
- D. Perform Integrated Change Control

**Answer:** B

#### NEW QUESTION 73

- (Topic 1)

Which Control Scope input is compared to actual results to determine if corrective action is required for the project?

- A. Scope baseline
- B. Scope management plan
- C. Change management plan
- D. Cost baseline

**Answer:** A

#### NEW QUESTION 78

- (Topic 1)

What type of project structure is a hierarchically organized depiction of the resources by type?

- A. Organizational breakdown structure (OBS)
- B. Resource breakdown structure (RBS)
- C. Work breakdown structure (WBS)
- D. Project breakdown structure (PBS)

**Answer:** B

#### NEW QUESTION 81

- (Topic 1)

In which Project Management Process Group is the project charter developed?

- A. Monitoring and Controlling
- B. Executing
- C. Initiating
- D. Planning

**Answer:** C

#### NEW QUESTION 86

- (Topic 1)

An output of the Develop Project Team process is:

- A. change requests
- B. team performance assessments
- C. project staff assignments
- D. project documents updates

**Answer:** B

#### NEW QUESTION 90

- (Topic 1)

Identify Risks is part of which Process Group?

- A. Planning
- B. Executing
- C. Closing
- D. Initiating

**Answer:** A

#### NEW QUESTION 92

- (Topic 1)

The zero duration of milestones in project planning occurs because milestones:

- A. Are unpredictable and challenge the Plan Schedule Management process.
- B. Occur at random times in the project plans.
- C. Represent a moment in time such as a significant project point or event.
- D. Represent both significant and insignificant points in the project and are difficult to anticipate.

**Answer:** C

#### NEW QUESTION 97

- (Topic 1)

Most experienced project managers know that:

- A. every project requires the use of all processes in the PMBOK® Guide.
- B. there is no single way to manage a project.
- C. project management techniques are risk free.
- D. there is only one way to manage projects successfully.

**Answer:** B

#### NEW QUESTION 99

- (Topic 1)

In which type of contract are the performance targets established at the onset and the final contract price determined after completion of all work based on the sellers performance?

- A. Firm-Fixed-Price (FFP)
- B. Fixed Price with Economic Price Adjustments (FP-EPA)
- C. Fixed-Price-Incentive-Fee (FPIF)
- D. Cost Plus Fixed Fee (CPFF)

**Answer:** C

#### NEW QUESTION 103

- (Topic 1)

Which is a tool or technique used in Define Scope?

- A. Templates, forms, and standards
- B. Change requests
- C. Product analysis
- D. Project assumptions

**Answer:** C

#### NEW QUESTION 108

- (Topic 1)

What process determines which risks might affect the project?

- A. Qualitative risk analysis
- B. Identify Risks
- C. Plan Risk Management
- D. Quantitative risk analysis

**Answer:** B

#### NEW QUESTION 111

- (Topic 1)

Which of the following Process Groups covers all Project Management Knowledge Areas?

- A. Executing
- B. Monitoring and Controlling
- C. Planning
- D. Initiating

**Answer:** C



**NEW QUESTION 113**

- (Topic 1)

A project's purpose or justification, measurable project objectives and related success criteria, a summary milestone schedule, and a summary budget are all components of which document?

- A. Work breakdown structure
- B. Requirements document
- C. Project charter
- D. Project management plan

**Answer:** C

**NEW QUESTION 117**

- (Topic 1)

Which of the following terms indicates a deliverable-oriented hierarchical decomposition of the project work?

- A. WBS directory
- B. Activity list
- C. WBS
- D. Project schedule

**Answer:** C

**NEW QUESTION 121**

- (Topic 1)

What is project management?

- A. A logical grouping of project management inputs, outputs, tools, and techniques
- B. Applying knowledge, skills, tools, and techniques to project activities to meet the project requirements
- C. Launching a process that can result in the authorization of a new project
- D. A formal, approved document that defines how the project is executed, monitored, and controlled

**Answer:** B

**NEW QUESTION 122**

- (Topic 1)

PMBOI Guide is a standard that describes:

- A. product-oriented processes.
- B. project management processes.
- C. product-oriented and project management processes.
- D. program management and project management processes.

**Answer:** B

**NEW QUESTION 124**

- (Topic 1)

Which type of dependency is contractually required or inherent in the nature of the work?

- A. External
- B. Lead
- C. Discretionary
- D. Mandatory

**Answer:** D

**NEW QUESTION 128**

- (Topic 1)

What is Project Portfolio Management?

- A. Management of a project by dividing the project into more manageable sub-projects.
- B. Management of a project by utilizing a portfolio of general management skills, such as planning, organizing, staffing, executing and controlling.
- C. Management of all projects undertaken by a company.
- D. Management of a collection of projects that are grouped together to facilitate effective management and meet strategic business objectives.

**Answer:** D

**NEW QUESTION 131**

- (Topic 1)

Which activity is an input to the select sellers process?

- A. Organizational process assets
- B. Resource availability
- C. Change control process
- D. Team performance assessment

**Answer:**



A

**NEW QUESTION 133**

- (Topic 1)

Which type of contract is a hybrid of both a cost-reimbursable and a fixed-price contract?

- A. Cost Plus Award Fee Contract (CPAF)
- B. Firm-Fixed -Price Contract (FFP)
- C. Time and Material Contract (T&M)
- D. Cost Plus Incentive Fee Contract (CPIF)

**Answer: C**

**NEW QUESTION 138**

- (Topic 1)

What characteristic do project and operational work share in common?

- A. Performed by systems
- B. Constrained by limited resources
- C. Repetitiveness
- D. Uniqueness

**Answer: B**

**NEW QUESTION 142**

- (Topic 1)

The purpose of developing a project scope management plan is to:

- A. Manage the timely completion of the project.
- B. Ensure that the project includes all of the work required.
- C. Make sure the project will satisfy the needs for which it was begun.
- D. Reduce the risk of negative events in the project.

**Answer: B**

**NEW QUESTION 147**

- (Topic 1)

Projects are undertaken by an organization to support the:

- A. Product performance.
- B. Budget process.
- C. Collective capabilities.
- D. Organizational strategy.

**Answer: D**

**NEW QUESTION 149**

- (Topic 1)

Which process uses occurrence probability and impact on project objectives to assess the priority of identified risks?

- A. Risk identification
- B. Qualitative risk analysis
- C. Risk management planning
- D. Quantitative risk analysis

**Answer: B**

**NEW QUESTION 152**

- (Topic 1)

Which of the following methods is a project selection technique?

- A. Flowcharting
- B. Earned value
- C. Cost-benefit analysis
- D. Pareto analysis

**Answer: C**

**NEW QUESTION 153**

- (Topic 1)

In which Knowledge Area is the project charter developed?

- A. Project Cost Management
- B. Project Scope Management
- C. Project Time Management
- D. Project Integration Management

**Answer:** D

**NEW QUESTION 158**

- (Topic 1)

As part of a mid-project evaluation, the project sponsor has asked for a forecast of the total project cost. What should be used to calculate the forecast?

- A. BAC
- B. EAC
- C. ETC
- D. WBS

**Answer:** B

**NEW QUESTION 159**

- (Topic 1)

Which of the following is the process of identifying the specific actions to be performed to produce the project deliverables?

- A. Estimate Activity Durations
- B. Sequence Activities
- C. Define Activities
- D. Activity Attributes

**Answer:** C

**NEW QUESTION 161**

- (Topic 1)

What are the components of the “triple constraint”?

- A. Scope, time, requirements
- B. Resources, time, cost
- C. Scope, management, cost
- D. Scope, time, cost

**Answer:** D

**NEW QUESTION 162**

- (Topic 1)

Which input to the Identify Stakeholders process provides information about internal or external parties related to the project?

- A. Procurement documents
- B. Communications plan
- C. Project charter
- D. Stakeholder register

**Answer:** C

**NEW QUESTION 165**

- (Topic 1)

Stakeholder satisfaction should be managed as a key project:

- A. Benefit
- B. Initiative
- C. Objective
- D. Process

**Answer:** C

**NEW QUESTION 169**

- (Topic 1)

Which process involves developing an approximation of the monetary resources needed to complete project activities?

- A. Estimate Costs
- B. Control Costs
- C. Determine Budget
- D. Plan Cost Management

**Answer:** A

**NEW QUESTION 170**

- (Topic 2)

An input to the Plan Stakeholder Management process is:

- A. The project charter.
- B. The stakeholder analysis.
- C. A communication management plan.

D. A stakeholder register.

**Answer:** D

**NEW QUESTION 175**

- (Topic 2)

The process of identifying and documenting project roles, responsibilities, required skills, and reporting relationships and creating a staffing management plan is known as:

- A. Develop Project Team.
- B. Manage Project Team.
- C. Acquire Project Team.
- D. Plan Human Resource Management.

**Answer:** D

**NEW QUESTION 176**

- (Topic 2)

What is an objective of the Develop Project Team process?

- A. Feelings of trust and improved cohesiveness
- B. Ground rules for interaction
- C. Enhanced resource availability
- D. Functional managers becoming more involved

**Answer:** A

**NEW QUESTION 177**

- (Topic 2)

Which tool or technique is an examination of industry and specific vendor capabilities?

- A. Independent estimates
- B. Market research
- C. Analytical techniques
- D. Bidder conferences

**Answer:** B

**NEW QUESTION 180**

- (Topic 2)

The only Process Group that comprises processes that typically occur from the beginning to the end of the project life cycle is:

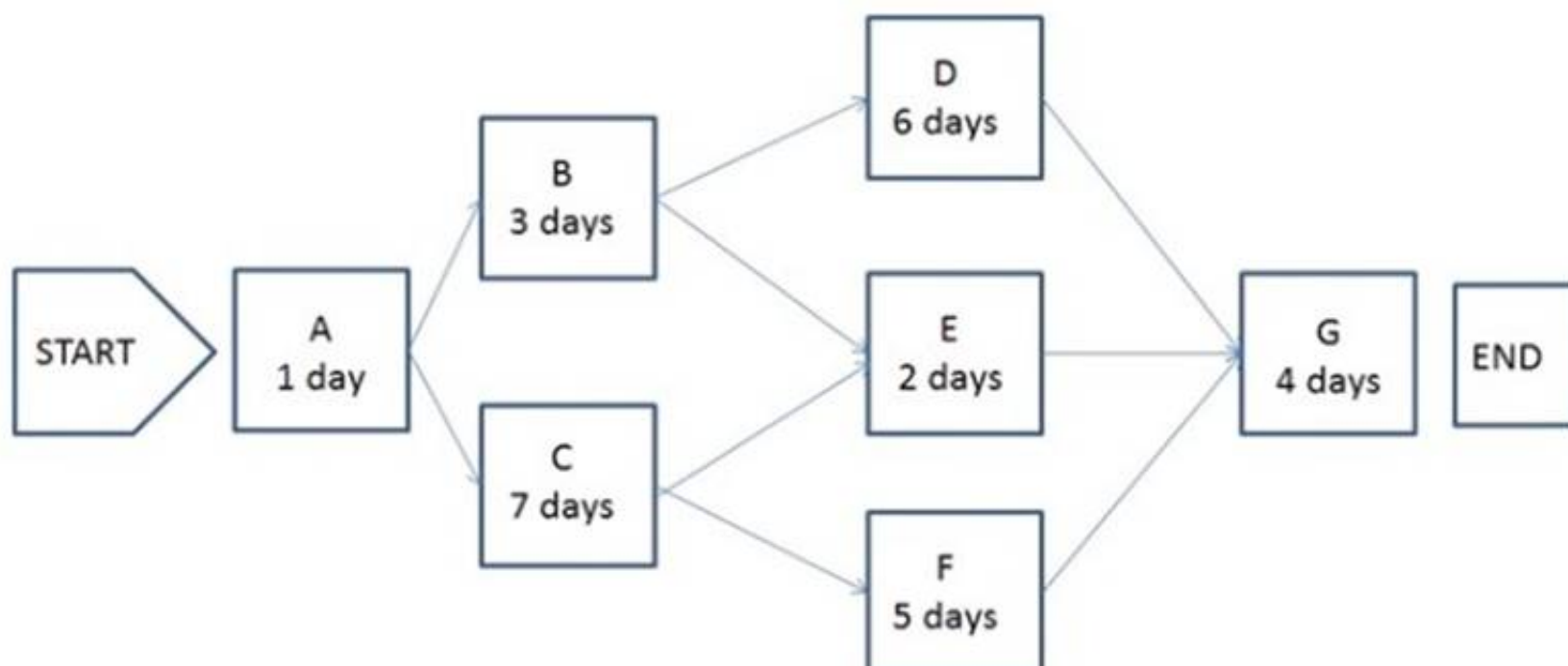
- A. Planning.
- B. Executing,
- C. Monitoring and Controlling.
- D. Closing.

**Answer:** A

**NEW QUESTION 183**

- (Topic 2)

The following is a network diagram for a project.



The critical path for the project is how many days in duration?

- A. 10
- B. 12
- C. 14

D. 17

**Answer:** D

**NEW QUESTION 186**

- (Topic 2)

A project team attempts to produce a deliverable and finds that they have neither the expertise nor the time to complete the deliverable in a timely manner. This issue could have been avoided if they had created and followed a:

- A. risk management plan
- B. human resource management plan
- C. scope management plan
- D. procurement management plan

**Answer:** D

**NEW QUESTION 190**

- (Topic 2)

At which stage of the project should certain factors such as the unavailability of human resources due to constraint be considered?

- A. Initiation
- B. Execution
- C. Planning
- D. Monitoring and Controlling

**Answer:** C

**NEW QUESTION 195**

- (Topic 2)

Definitions of probability and impact, revised stakeholder tolerances, and tracking are components of which subsidiary plan?

- A. Cost management plan
- B. Quality management plan
- C. Communications management plan
- D. Risk management plan

**Answer:** D

**NEW QUESTION 196**

- (Topic 2)

A benefit of using virtual teams in the Acquire Project Team process is the reduction of the:

- A. cultural differences of team members
- B. possibility of communication misunderstandings
- C. costs associated with travel
- D. costs associated with technology

**Answer:** C

**NEW QUESTION 200**

- (Topic 2)

The milestone list is an input to which process from the Planning Process Group?

- A. Define Activities
- B. Estimate Activity Durations
- C. Estimate Activity Resources
- D. Sequence Activities

**Answer:** D

**NEW QUESTION 205**

- (Topic 2)

Which process identifies whether the needs of a project can best be met by acquiring products, services, or results outside of the organization?

- A. Plan Procurement Management
- B. Control Procurements
- C. Collect Requirements
- D. Plan Cost Management

**Answer:** A

**NEW QUESTION 208**

- (Topic 2)

Activity cost estimates are quantitative assessments of the probable costs required to:

- A. Create WBS.
- B. complete project work.
- C. calculate costs.
- D. Develop Project Management Plan.

**Answer:** B

**NEW QUESTION 213**

- (Topic 2)

An input of the Create WBS process is:

- A. requirements documentation.
- B. scope baseline.
- C. project charter.
- D. validated deliverables.

**Answer:** A

**NEW QUESTION 214**

- (Topic 2)

Which of the following is an output of Define Scope?

- A. Project scope statement
- B. Project charter
- C. Project plan
- D. Project schedule

**Answer:** A

**NEW QUESTION 218**

- (Topic 2)

In the Define Activities process, the schedule management plan is used to:

- A. Capture the lessons learned from other projects for comparison.
- B. Contain the standard activity list.
- C. Document and support the project change requests.
- D. Prescribe the level of detail needed to manage the work.

**Answer:** D

**NEW QUESTION 222**

- (Topic 2)

Which quality tool may prove useful in understanding and estimating the cost of quality in a process?

- A. Checksheets
- B. Histograms
- C. Flowcharts
- D. Control charts

**Answer:** C

**NEW QUESTION 225**

- (Topic 2)

Which component of the human resource management plan describes when and how project team members are acquired and how long they will be needed?

- A. Resource breakdown structure
- B. Staffing management plan
- C. Project organizational chart
- D. Scope management plan

**Answer:** B

**NEW QUESTION 230**

- (Topic 2)

When does the project team determine which dependencies are discretionary?

- A. Before the Define Activities process
- B. During the Define Activities process
- C. Before the Sequence Activities process
- D. During the Sequence Activities process

**Answer:** D

**NEW QUESTION 233**

- (Topic 2)

Which of the following is an output of the Information Distribution Process?

- A. Project calendar
- B. Communication management plan
- C. Requested changes
- D. Communication requirement plan

**Answer:** C

**NEW QUESTION 235**

- (Topic 2)

Which items are components of a project management plan?

- A. Change management plan, process improvement plan, and scope management plan
- B. Agreements, procurement management plan, and work performance information
- C. Schedule management plan, project schedule, and resource calendars
- D. Scope baseline, project statement of work, and requirements traceability matrix

**Answer:** A

**NEW QUESTION 238**

- (Topic 2)

The Plan Stakeholder Management process belongs to which Process Group?

- A. Executing
- B. Initiating
- C. Planning
- D. Monitoring and Controlling

**Answer:** C

**NEW QUESTION 239**

- (Topic 2)

Which of the following are three inputs to the risk register?

- A. Risk register updates, stakeholder register, and quality management plan
- B. Communication management plan, enterprise environmental factors, and activity duration estimates
- C. Risk management plan, activity cost estimates, and project documents
- D. Project scope statement, organizational process assets, and scope baseline

**Answer:** C

**NEW QUESTION 240**

- (Topic 2)

Risk categorization is a tool or technique used in which process?

- A. Plan Risk Responses
- B. Plan Risk Management
- C. Perform Qualitative Risk Analysis
- D. Perform Quantitative Risk Analysis

**Answer:** C

**NEW QUESTION 245**

- (Topic 2)

Which Plan Schedule Management tool or technique may involve choosing strategic options to estimate and schedule the project?

- A. Facilitation techniques
- B. Expert judgment
- C. Analytical techniques
- D. Variance analysis

**Answer:** C

**NEW QUESTION 247**

- (Topic 2)

Which tool or technique of Plan Quality involves comparing actual or planned practices to those of other projects to generate ideas for improvement and provide a basis by which to measure performance?

- A. Histogram
- B. Quality audits
- C. Benchmarking
- D. Performance measurement analysis

**Answer:** C

**NEW QUESTION 251**

- (Topic 2)

Which of the following tools or techniques is used for Estimate Activity Durations?

- A. Critical path method
- B. Rolling wave planning
- C. Precedence diagramming method
- D. Parametric estimating

**Answer:** D**NEW QUESTION 255**

- (Topic 2)

Which tool or technique is used in Manage Stakeholder Expectations?

- A. Stakeholder management strategy
- B. Communication methods
- C. Issue log
- D. Change requests

**Answer:** B**NEW QUESTION 256**

- (Topic 2)

A work package has been scheduled to cost \$1,000 to complete and was to be finished today. As of today, the actual expenditure is \$1,200 and approximately half of the work has been completed. What is the cost variance?

- A. -700
- B. -200
- C. 200
- D. 500

**Answer:** A**NEW QUESTION 260**

- (Topic 2)

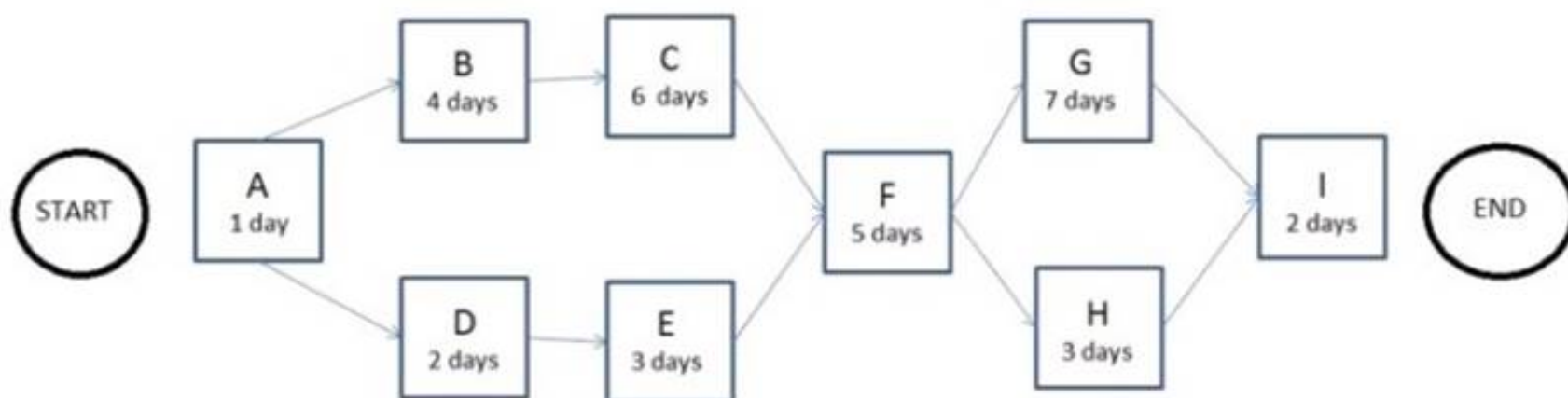
Which item is a formal proposal to modify any document, deliverable, or baseline?

- A. Change request
- B. Requirements documentation
- C. Scope baseline
- D. Risk urgency assessment

**Answer:** A**NEW QUESTION 261**

- (Topic 2)

The following is a network diagram for a project.



What is the critical path for the project?

- A. A-B-C-F-G-I
- B. A-B-C-F-H-I
- C. A-D-E-F-G-I
- D. A-D-E-F-H-I

**Answer:** A**NEW QUESTION 262**

- (Topic 2)

Which can be used to determine whether a process is stable or has predictable performance?

- A. Matrix diagram
- B. Histogram



- C. Control chart
- D. Flowchart

**Answer: C**

#### NEW QUESTION 267

- (Topic 2)

Which of the following statements correctly characterizes pull communication?

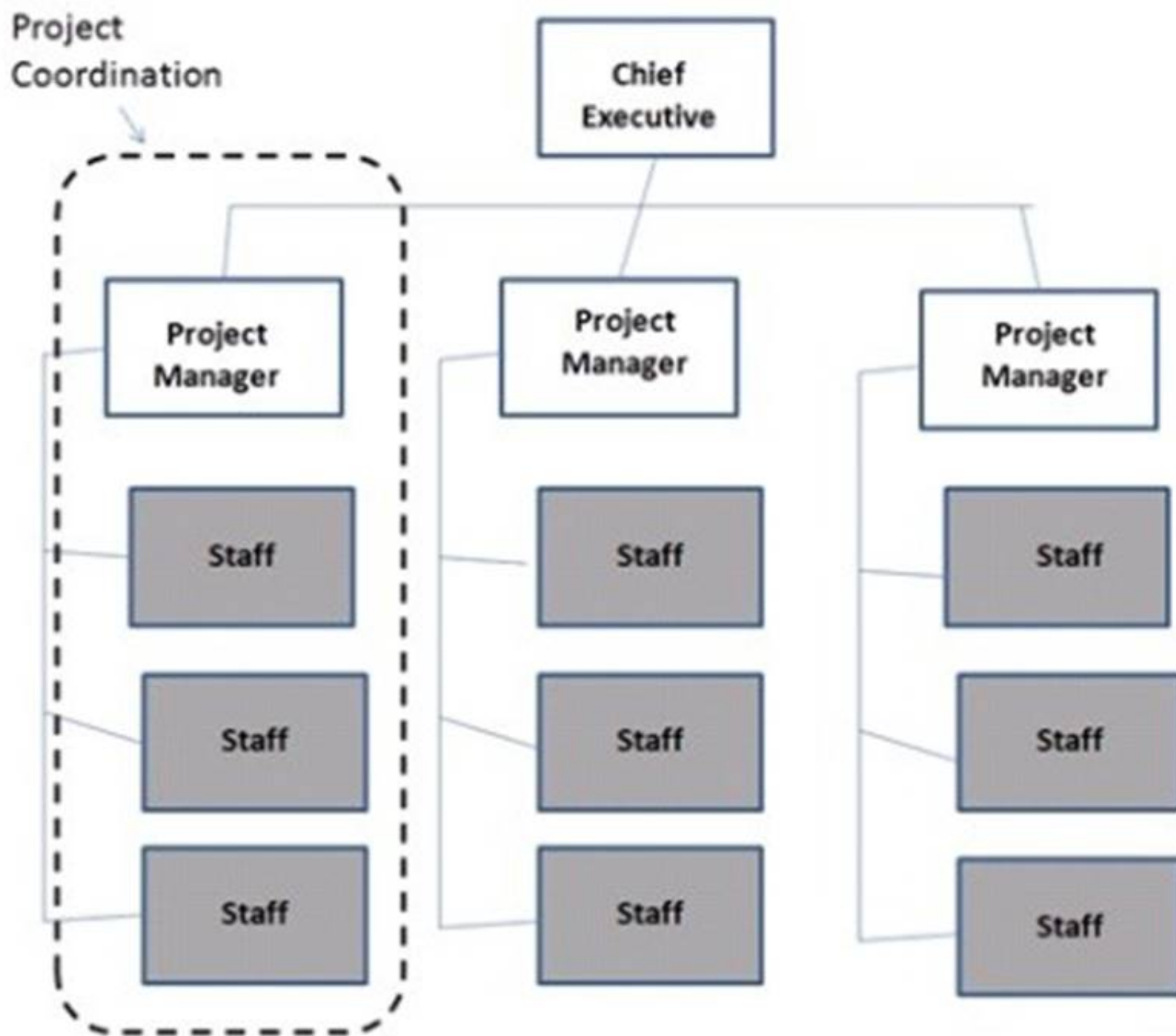
- A. It includes letters, memos, reports, emails, and faxes.
- B. It requires recipients to access communication content at their own discretion.
- C. It is the most efficient way to ensure a common understanding among all participants.
- D. It is primarily used when the volume of information to be transferred is minimal.

**Answer: B**

#### NEW QUESTION 268

- (Topic 2)

Which type of organizational structure is displayed in the diagram provided?



- A. Balanced matrix
- B. Projectized
- C. Strong matrix
- D. Functional

**Answer: B**

#### NEW QUESTION 271

- (Topic 2)

Which quality management and control tool is useful in visualizing parent-to-child relationships in any decomposition hierarchy that uses a systematic set of rules that define a nesting relationship?

- A. Interrelationship digraphs
- B. Tree diagram
- C. Affinity diagram
- D. Network diagram

**Answer:** B

**NEW QUESTION 273**

- (Topic 2)

Which tool or technique can a project manager use to select in advance a team member who will be crucial to the task?

- A. Acquisition
- B. Negotiation
- C. Virtual team
- D. Pre-assignment

**Answer:** D

**NEW QUESTION 278**

- (Topic 2)

Which tool and technique of quality planning involves comparing actual or planned practices to those of other projects to generate ideas for improvement and provide a basis by which to measure performance?

- A. Histogram
- B. Quality audits
- C. Benchmarking
- D. Performance measurement analysis

**Answer:** C

**NEW QUESTION 281**

- (Topic 2)

Which of the following tools or techniques is used for Estimate Activity Duration?

- A. Critical path
- B. Rolling Wave
- C. PDM
- D. Para metric

**Answer:** D

**NEW QUESTION 282**

- (Topic 2)

Using values such as scope, cost, budget, and duration or measures of scale such as size, weight, and complexity from a previous similar project as the basis for estimating the same parameter or measurement for a current project describes which type of estimating?

- A. Bottom-up
- B. Parametric
- C. Analogous
- D. Three-point

**Answer:** C

**NEW QUESTION 283**

- (Topic 2)

A full-time project manager with low to moderate authority and part-time administrative staff is working in an organizational structure with which type of matrix?

- A. Strong
- B. Weak
- C. Managed
- D. Balanced

**Answer:** D

**NEW QUESTION 287**

- (Topic 2)

Who, along with the project manager, is supposed to direct the performance of the planned project activities and manage the various technical and organizational interfaces that exist within the project?

- A. The customer and functional managers
- B. The risk owners and stakeholders
- C. The sponsors and stakeholders
- D. The project management team

**Answer:** D

**NEW QUESTION 288**

- (Topic 2)

Which process determines the risks that may affect the project and documents their characteristics?

- A. Control Risks
- B. Plan Risk Management
- C. Plan Risk Responses
- D. Identify Risks

**Answer:** D

**NEW QUESTION 289**

- (Topic 2)

In the Plan Procurement Management process, which source selection criteria analyzes if the seller's proposed technical methodologies, techniques, solutions, and services meet the procurement documents requirements?

- A. Technical approach
- B. Technical capability
- C. Business size and type
- D. Production capacity and interest

**Answer:** A

**NEW QUESTION 294**

- (Topic 2)

Organizations manage portfolios based on which of the following types of plans?

- A. Strategic
- B. Project
- C. Program
- D. Operational

**Answer:** A

**NEW QUESTION 297**

- (Topic 2)

Which stakeholder classification model groups stakeholders based on their level of authority and their active involvement in the project?

- A. Power/influence grid
- B. Power/interest grid
- C. Influence/impact grid
- D. Salience model

**Answer:** A

**NEW QUESTION 301**

- (Topic 2)

What is the function of a Project Management Office (PMO)?

- A. To focus on the coordinated planning, prioritization, and execution of projects and subprojects that are tied to the parent organizations or the client's overall business objectives.
- B. To coordinate and manage the procurement of projects relevant to the parent organization's business objectives and to administer the project charters accordingly.
- C. To administer performance reviews for the project manager and the project team members and to handle any personnel and payroll issues.
- D. To focus on the specified project objectives and to manage the scope, schedule, cost, and quality of the work packages.

**Answer:** A

**NEW QUESTION 303**

- (Topic 2)

Which risk management strategy seeks to eliminate the uncertainty associated with a particular upside risk by ensuring that the opportunity is realized?

- A. Enhance
- B. Share
- C. Exploit
- D. Accept

**Answer:** C

**NEW QUESTION 305**

- (Topic 2)

Grouping the stakeholders based on their level of authority and their level of concern regarding project outcomes describes which classification model for stakeholder analysis?

- A. Influence/impact grid
- B. Power/influence grid
- C. Power/interest grid
- D. Salience model

**Answer:** C

**NEW QUESTION 309**

- (Topic 2)

Tools and techniques used for Plan Communications include the communication:

- A. requirements analysis, communication technology, communication models, and communication methods.
- B. methods, stakeholder register, communication technology, and communication models.
- C. requirements, communication technology, communication requirements analysis, and communication methods.
- D. management plan, communication technology, communication models, and communication requirements analysis.

**Answer:** A

**NEW QUESTION 314**

- (Topic 2)

Requirements documentation will typically contain at least:

- A. Stakeholder requirements, staffing requirements, and transition requirements.
- B. Business requirements, the stakeholder register, and functional requirements.
- C. Stakeholder impact, budget requirements, and communications requirements.
- D. Business objectives, stakeholder impact, and functional requirements.

**Answer:** D

**NEW QUESTION 317**

- (Topic 2)

Which type of analysis systemically gathers and analyzes qualitative and quantitative information to determine which interests should be taken into account throughout the project?

- A. Product
- B. Cost-benefit
- C. Stakeholder
- D. Research

**Answer:** C

**NEW QUESTION 321**

- (Topic 3)

At which stage of team development do members begin to work together, adjust work habits, and trust each other?

- A. Forming
- B. Storming
- C. Norming
- D. Performing

**Answer:** C

**NEW QUESTION 322**

- (Topic 3)

An output of the Manage Project Team process is:

- A. project management plan updates
- B. project staff assignments updates
- C. team performance assessments
- D. resource calendar updates

**Answer:** A

**NEW QUESTION 326**

- (Topic 3)

An input to the Estimate Activity Resources process is:

- A. Activity resource requirements.
- B. Published estimating data.
- C. Resource calendars.
- D. Resource breakdown structure (RBS).

**Answer:** C

**NEW QUESTION 327**

- (Topic 3)

What is one of the MAJOR outputs of activity sequencing?

- A. Responsibility assignment matrix
- B. Work breakdown structure update
- C. Project network diagram
- D. Mandatory dependencies list

**Answer:** C

**NEW QUESTION 332**

- (Topic 3)

Which of the following consists of the detailed project scope statement and its associated WBS and WBS dictionary?

- A. Scope plan
- B. Product scope
- C. Scope management plan
- D. Scope baseline

**Answer:** D

**NEW QUESTION 333**

- (Topic 3)

The Project Human Resource Management process that involves confirming human resource availability and obtaining the team necessary to complete project activities is:

- A. Acquire Project Team.
- B. Plan Human Resource Management.
- C. Manage Project Team.
- D. Develop Project Team.

**Answer:** A

**NEW QUESTION 338**

- (Topic 3)

Which process requires implementation of approved changes?

- A. Direct and Manage Project Execution
- B. Monitor and Control Project Work
- C. Perform Integrated Change Control
- D. Close Project or Phase

**Answer:** A

**NEW QUESTION 339**

- (Topic 3)

What scope definition technique is used to generate different approaches to execute and perform the work of the project?

- A. Build v
- B. buy
- C. Expert judgment
- D. Alternatives identification
- E. Product analysis

**Answer:** C

**NEW QUESTION 344**

- (Topic 3)

Which of the following makes changes to formally control documentation to reflect modified or additional ideas or content?

- A. Defect repair
- B. Updates
- C. Corrective action
- D. Performance reports

**Answer:** B

**NEW QUESTION 345**

- (Topic 3)

The project manager for XYZ stationers is sequencing the activities for the project to set up a new office. It is known from knowledge of best practices that it is better to wait for the painters to finish painting the walls before the new floors are installed. This is an example of which of the following types of dependency?

- A. Precedence
- B. Discretionary
- C. External
- D. Mandatory

**Answer:** B

**NEW QUESTION 347**

- (Topic 3)

Which changes occur in risk and uncertainty as well as the cost of changes as the life cycle of a typical project progresses?

- A. Risk and uncertainty increase; the cost of changes increases.
- B. Risk and uncertainty increase; the cost of changes decreases.
- C. Risk and uncertainty decrease; the cost of changes increases.
- D. Risk and uncertainty decrease; the cost of changes decreases.

**Answer:** C

#### NEW QUESTION 350

- (Topic 3)

Which of the following correctly lists the configuration management activities included in the Integrated Change Control process?

- A. Configuration definition, configuration status accounting, configuration monitoring and control
- B. Configuration identification, configuration status accounting, configuration verification and audit
- C. Configuration identification, configuration status reporting, configuration verification and audit
- D. Configuration definition, configuration status reporting, configuration monitoring and Control

**Answer:** B

#### NEW QUESTION 352

- (Topic 3)

The process of monitoring the status of the project to update project progress and manage changes to the schedule baseline is:

- A. Control Schedule.
- B. Quality Control.
- C. Perform Integrated Change Control.
- D. Develop Schedule.

**Answer:** A

#### NEW QUESTION 354

- (Topic 3)

A procurement management plan is a subsidiary of which other type of plan?

- A. Resource plan
- B. Project management plan
- C. Cost control plan
- D. Expected monetary value plan

**Answer:** B

#### NEW QUESTION 358

- (Topic 3)

Who determines which dependencies are mandatory during the Sequence Activities process?

- A. Project manager
- B. External stakeholders
- C. Internal stakeholders
- D. Project team

**Answer:** D

#### NEW QUESTION 363

- (Topic 3)

A process is defined as:

- A. A set of interrelated actions and activities performed to achieve a certain objective.
- B. A set of guidelines that explains how to carry out a particular task.
- C. The inputs for a task and the tools and techniques required to carry out the task.
- D. A collection of logically related project activities, usually culminating in the completion of a major deliverable.

**Answer:** A

#### NEW QUESTION 367

- (Topic 3)

A project manager should communicate to stakeholders about resolved project issues by updating the:

- A. project records
- B. project reports
- C. stakeholder notifications
- D. stakeholder register

**Answer:** C

#### NEW QUESTION 369

- (Topic 3)

Which type of analysis would be used for the Plan Quality process?

- A. Schedule
- B. Checklist
- C. Assumption
- D. Cost-Benefit

**Answer:** D

**NEW QUESTION 370**

- (Topic 3)

Impacts to other organizational areas, levels of service, and acceptance criteria are typical components of which document?

- A. Business case
- B. Work breakdown structure
- C. Requirements documentation
- D. Risk register

**Answer:** C

**NEW QUESTION 375**

- (Topic 3)

Tools and techniques used in Direct and Manage Project Work include:

- A. Process analysis and expert judgment
- B. Analytical techniques and a project management information system
- C. Performance reviews and meetings
- D. Expert judgment and meetings

**Answer:** D

**NEW QUESTION 380**

- (Topic 3)

An input to the Perform Integrated Change Control process is:

- A. expert judgment
- B. seller proposals
- C. the project charter
- D. the project management plan

**Answer:** D

**NEW QUESTION 381**

- (Topic 3)

Which technique is used in Perform Quantitative Risk Analysis?

- A. Sensitivity analysis
- B. Probability and impact matrix
- C. Risk data quality assessment
- D. Risk categorization

**Answer:** A

**NEW QUESTION 386**

- (Topic 3)

Which of the following is an example of schedule compression?

- A. Activity sequencing
- B. Resource leveling
- C. Lead and lag adjusting
- D. Crashing

**Answer:** D

**NEW QUESTION 388**

- (Topic 3)

To which process is work performance information an input?

- A. Administer Procurements
- B. Direct and Manage Project Execution
- C. Create WBS
- D. Perform Qualitative Risk Analysis

**Answer:** C



**NEW QUESTION 393**

- (Topic 3)

Which Process Group contains the processes performed to complete the work defined in the project management plan to satisfy the project specifications?

- A. Initiating
- B. Planning
- C. Executing
- D. Closing

**Answer:** C

**NEW QUESTION 396**

- (Topic 3)

One of the tools and techniques of the Manage Project Team process is:

- A. organization charts.
- B. ground rules.
- C. organizational theory,
- D. conflict management.

**Answer:** D

**NEW QUESTION 398**

- (Topic 3)

While implementing an approved change, a critical defect was introduced. Removing the defect will delay the product delivery. What is the MOST appropriate approach to managing this situation?

- A. Utilize the change control process.
- B. Crash the schedule to fix the defect.
- C. Leave the defect in and work around it.
- D. Fast-track the remaining development.

**Answer:** A

**NEW QUESTION 399**

- (Topic 3)

Which of the following are documented directions to perform an activity that can reduce the probability of negative consequences associated with project risks?

- A. Recommended corrective actions
- B. Recommended preventive actions
- C. Risk audits
- D. Risk reassessments

**Answer:** B

**NEW QUESTION 404**

- (Topic 3)

Which Process Group includes the Manage Stakeholder Engagement process?

- A. Executing
- B. Planning
- C. Monitoring and Controlling
- D. Initiating

**Answer:** A

**Explanation:**

Reason: Control Stakeholder Engagement is in the Monitoring and Control Process.

**NEW QUESTION 406**

- (Topic 3)

Which characteristic is unique to project work and does not apply to operational work?

- A. Performed by individuals
- B. Limited by constraints
- C. Temporary
- D. Performed to achieve organizational objectives

**Answer:** C

**NEW QUESTION 410**

- (Topic 3)

What provides information regarding the ways people, teams, and organizational units behave?

- A. Organizational chart

- B. Organizational theory
- C. Organizational structure
- D. Organizational behavior

**Answer:** B

**NEW QUESTION 412**

- (Topic 3)

Which tool or technique is used in Close Procurements?

- A. Contract plan
- B. Procurement plan
- C. Closure process
- D. Procurement audits

**Answer:** D

**NEW QUESTION 416**

- (Topic 3)

A project manager who communicates to the project team though email is using which type of communication?

- A. Formal
- B. Informal r
- C. Horizontal
- D. Unofficial

**Answer:** B

**NEW QUESTION 418**

- (Topic 3)

Which of the following is an input to the Plan Risk Responses process?

- A. Risk urgency assessment
- B. Organizational process assets
- C. Risk register
- D. Schedule management plan

**Answer:** C

**NEW QUESTION 423**

- (Topic 3)

Which of the seven basic quality tools is especially useful for gathering attributes data while performing inspections to identify defects?

- A. Histograms
- B. Scatter diagrams
- C. Flowcharts
- D. Checksheets

**Answer:** D

**NEW QUESTION 427**

- (Topic 3)

The Human Resource Management processes are:

- A. Develop Human Resource Plan, Acquire Project Team, Develop Project Team, and Manage Project Team.
- B. Acquire Project Team, Manage Project Team, Manage Stakeholder Expectations, and Develop Project Team.
- C. Acquire Project Team, Develop Human Resource Plan, Conflict Management, and Manage Project Team.
- D. Develop Project Team, Manage Project Team, Estimate Activity Resources, and Acquire Project Team.

**Answer:** A

**NEW QUESTION 429**

- (Topic 3)

The Process Group that involves coordinating people and resources, as well as integrating and performing the activities of the project in accordance with the project management plan is known as:

- A. Initiating.
- B. Planning.
- C. Executing.
- D. Monitoring and Controlling.

**Answer:** C

**NEW QUESTION 431**

- (Topic 3)

Which of the following procurement processes results in the awarding of a procurement contract?

- A. Administer Procurements
- B. Close Procurements
- C. Conduct Procurements
- D. Plan Procurements

**Answer:** C

**NEW QUESTION 434**

- (Topic 3)

Which of the following is a means of reaching a group decision in which everyone agrees on a single course of action?

- A. Dictatorship
- B. Majority
- C. Plurality
- D. Unanimity

**Answer:** D

**NEW QUESTION 438**

- (Topic 3)

The Perform Quality Assurance process occurs in which Process Group?

- A. Executing
- B. Monitoring and Controlling
- C. Initiating
- D. Planning

**Answer:** A

**NEW QUESTION 440**

- (Topic 3)

Which of the following buffers protects the target finish date from slippage along the critical chain?

- A. Critical buffer
- B. Project buffer
- C. Duration buffer
- D. Feeding buffer

**Answer:** B

**NEW QUESTION 442**

- (Topic 3)

Which schedule method allows the project team to place buffers on the project schedule path to account for limited resources and project uncertainties?

- A. Critical path method
- B. Critical chain method
- C. Resource leveling
- D. Schedule network analysis

**Answer:** B

**NEW QUESTION 444**

- (Topic 3)

An input to the Identify Stakeholders process is:

- A. The project management plan.
- B. The stakeholder register.
- C. Procurement documents.
- D. Stakeholder analysis.

**Answer:** C

**NEW QUESTION 448**

- (Topic 3)

Which cost estimate technique includes contingencies to account for cost uncertainty?

- A. Vendor bid analysis
- B. Three-point estimates
- C. Parametric estimating
- D. Reserve analysis

**Answer:** D

**NEW QUESTION 451**

- (Topic 3)

A tool or technique in Perform Quality Control that a project manager would use is:

- A. quality audits.
- B. process analysis.
- C. benchmarking.
- D. inspection.

**Answer:** D

**NEW QUESTION 455**

- (Topic 3)

Which of the following Project Communication Management processes uses performance reports as an input?

- A. Manage Stakeholder Expectations
- B. Report Performance
- C. Distribute Information
- D. Plan Communications

**Answer:** C

**NEW QUESTION 456**

- (Topic 3)

Expected monetary value (EMV) is computed by which equation?

- A. Value of each possible outcome multiplied by probability of occurrence
- B. Value of each possible outcome multiplied by probability of non-occurrence
- C. Multiplying the value of each possible outcome by the probability of occurrence and adding the products together
- D. Multiplying the value of each possible outcome by the probability of non-occurrence and adding the products together

**Answer:** C

**NEW QUESTION 458**

- (Topic 3)

Analytical techniques are a tool and technique of which process in Project Procurement Management?

- A. Plan Procurement Management
- B. Control Procurements
- C. Conduct Procurements
- D. Close Procurements

**Answer:** C

**NEW QUESTION 459**

- (Topic 3)

Activity Duration	Days	Predecessor
A	5	
B	2	
C	4	A
D	2	B,C
E	5	D

Which of the following is the correct network diagram for the table?

- A. Begin-A-C-D-E-End-B-D
- B. Begin-A-B-C-D-E-End
- C. Begin-A-B-D-E-End A-C-D
- D. Begin-A-C-D-E-End-B-C

**Answer:** A

**NEW QUESTION 460**

- (Topic 3)

Which of the following is developed from the project scope baseline and defines only that portion of the project scope that is to be included within a related

contract?

- A. Product scope description
- B. Procurement statement of work
- C. Project schedule
- D. Work breakdown structure (WBS)

**Answer:** B

**NEW QUESTION 464**

- (Topic 3)

The correct equation for schedule variance (SV) is earned value:

- A. minus planned value [EV - PV].
- B. minus actual cost [EV - AC].
- C. divided by planned value [EV/PV],
- D. divided by actual cost [EV/AC].

**Answer:** A

**NEW QUESTION 466**

- (Topic 3)

The definition of operations is a/an:

- A. organizational function performing the temporary execution of activities that produce the same product or provide repetitive service.
- B. temporary endeavor undertaken to create a unique product, service, or result.
- C. organization that provides oversight for an administrative area.
- D. organizational function performing the ongoing execution of activities that produce the same product or provide repetitive service.

**Answer:** D

**NEW QUESTION 470**

- (Topic 4)

Which technique is commonly used for the Quantitative Risk Analysis activity?

- A. Brainstorming
- B. Strategies for Opportunities
- C. Decision Tree Analysis
- D. Risk Data Quality Assessment

**Answer:** C

**NEW QUESTION 472**

- (Topic 4)

Which schedule network analysis technique modifies the project schedule to account for limited resources?

- A. Human resource planning
- B. Fast tracking
- C. Critical chain method
- D. Rolling wave planning

**Answer:** C

**NEW QUESTION 473**

- (Topic 4)

The purpose of the Project Communications Management Knowledge Area is to:

- A. Monitor and control communications throughout the entire project life cycle.
- B. Maintain an optimal flow of information among all project participants.
- C. Develop an appropriate approach for project communications.
- D. Ensure timely and appropriate collection of project information.

**Answer:** D

**NEW QUESTION 477**

- (Topic 4)

Which tool or technique is used in the Estimate Costs process?

- A. Acquisition
- B. Earned value management
- C. Vendor bid analysis
- D. Forecasting

**Answer:** C

**NEW QUESTION 482**

- (Topic 4)

When cost variance is negative and schedule variance is positive, the project is:

- A. under budget and behind schedule.
- B. over budget and ahead of schedule.
- C. on schedule.
- D. complete; all planned values have been earned.

**Answer:** B

**NEW QUESTION 483**

- (Topic 4)

Which change request is an intentional activity that realigns the performance of the project work with the project management plan?

- A. Update
- B. Preventive action
- C. Defect repair
- D. Corrective action

**Answer:** D

**NEW QUESTION 487**

- (Topic 4)

A collection of projects managed as a group to achieve strategic objectives is referred to as a:

- A. plan
- B. process
- C. program
- D. portfolio

**Answer:** D

**NEW QUESTION 492**

- (Topic 4)

Which technique is utilized in the Control Schedule process?

- A. Performance measure
- B. Baseline schedule
- C. Schedule network analysis
- D. Variance analysis

**Answer:** D

**NEW QUESTION 497**

- (Topic 4)

What are the key components of the communication model?

- A. Encode, message and feedback-message, medium, noise, and decode
- B. Encode, messaging technology, medium, noise, and decode
- C. Sender, message and feedback-message, medium, noise, and translate
- D. Receiver, message and feedback-message, medium, noise, and decode

**Answer:** A

**NEW QUESTION 498**

- (Topic 4)

A risk response strategy in which the project team shifts the impact of a threat, together with ownership of the response, to a third party is called:

- A. mitigate
- B. accept
- C. transfer
- D. avoid

**Answer:** C

**NEW QUESTION 502**

- (Topic 4)

In the Estimate Activity Durations process, productivity metrics and published commercial information inputs are part of the:

- A. enterprise environmental factors.
- B. organizational process assets.
- C. project management plan,
- D. project funding requirements.

**Answer:** A

**NEW QUESTION 506**

- (Topic 4)

The ways in which the roles and responsibilities, reporting relationships, and staffing management will be addressed and structured within a project is described in the:

- A. Human resource management plan.
- B. Activity resource requirements.
- C. Personnel assessment tools,
- D. Multi-criteria decision analysis.

**Answer:** A

**NEW QUESTION 510**

- (Topic 4)

An output of the Validate Scope process is:

- A. A requirements traceability matrix.
- B. The scope management plan.
- C. Work performance reports.
- D. Change requests.

**Answer:** D

**NEW QUESTION 513**

- (Topic 4)

Which Activity Duration Estimating technique incorporates additional timing for contingency purposes?

- A. Analogous Estimating
- B. Expert Judgment
- C. Optimistic Estimates
- D. Reserve Analysis

**Answer:** D

**NEW QUESTION 514**

- (Topic 4)

Which process occurs within the Monitoring and Controlling Process Group?

- A. Cost Control
- B. Quality Planning
- C. Quantitative Risk Analysis
- D. Cost Budgeting

**Answer:** A

**NEW QUESTION 519**

- (Topic 4)

The purpose of inspection in Perform Quality Control is to keep errors:

- A. in line with a measured degree of conformity.
- B. out of the hands of the customer.
- C. in a specified range of acceptable results.
- D. out of the process.

**Answer:** C

**NEW QUESTION 523**

- (Topic 4)

Which of the following processes audits the quality requirements and the results from quality control measures to ensure appropriate quality standards and operational definitions are used?

- A. Perform Quality Control
- B. Quality Metrics
- C. Perform Quality Assurance
- D. Plan Quality

**Answer:** C

**NEW QUESTION 524**

- (Topic 4)

Using the following data, what is the Schedule Performance Index (SPI)? EV= \$500 PV= \$750 AC= \$1000 BAC= \$1200

- A. 0.67
- B. 1.5
- C. 0.75
- D. 0.5



**Answer:** A

**NEW QUESTION 528**

- (Topic 4)

When a control chart is used to monitor performance of a process, which of the following will be set by the project manager and the appropriate stakeholders to reflect the point(s) at which corrective action will be taken to prevent exceeding the specification limits?

- A. Upper and lower control limits
- B. Upper and lower specification limits
- C. Process mean
- D. Data points

**Answer:** A

**NEW QUESTION 532**

- (Topic 4)

An output of the Perform Integrated Change Control process is:

- A. Deliverables.
- B. Validated changes.
- C. The change log.
- D. The requirements traceability matrix.

**Answer:** C

**NEW QUESTION 536**

- (Topic 4)

When does Monitor and Control Risks occur?

- A. At project initiation
- B. During work performance analysis
- C. Throughout the life of the project
- D. At project milestones

**Answer:** C

**NEW QUESTION 541**

- (Topic 4)

Which of the following are outputs of the Monitor and Control Project Work process?

- A. Requested changes, forecasts, recommended corrective actions
- B. Forecasts, resources plan, bottom up estimating
- C. Recommended corrective actions, cost baseline, forecasts
- D. Requested changes, recommended corrective actions, project constraints

**Answer:** A

**NEW QUESTION 545**

- (Topic 4)

Which of the following events would result in a baseline update?

- A. A project is behind schedule and the project manager wants the baseline to reflect estimated actual completion.
- B. A customer has approved a change request broadening the project scope and increasing the budget.
- C. One of the risks identified in the risk management plan occurs, resulting in a schedule delay.
- D. One of the key project team resources has left the team and no replacement is available.

**Answer:** B

**NEW QUESTION 547**

- (Topic 4)

Forecasts, requested changes, recommended corrective actions, and organizational process asset updates are all outputs of which process?

- A. Risk response planning
- B. Risk monitoring and control
- C. Performance reporting
- D. Manage stakeholders

**Answer:** B

**NEW QUESTION 549**

- (Topic 4)

Which type of estimating can produce higher levels of accuracy, depending upon the sophistication and underlying data built into the model?

- A. Bottom-up
- B. Three-point

- C. Parametric
- D. Analogous

**Answer:** C

**NEW QUESTION 552**

- (Topic 4)

The chart below is an example of a:

ID	Requirements Description	Project Objectives	WBS Deliverables	Product Design	Product Development	Test Cases
001						
002						
003						

- A. Responsibility assignment matrix (RAM)
- B. Work breakdown structure (WBS)
- C. RACI chart
- D. Requirements traceability matrix

**Answer:** D

**NEW QUESTION 554**

- (Topic 4)

Plan Schedule Management is a process in which Knowledge Area?

- A. Project Scope Management
- B. Project Human Resource Management
- C. Project Integration Management
- D. Project Time Management

**Answer:** D

**NEW QUESTION 556**

- (Topic 4)

Which of the Project Time Management processes analyzes activity sequencing, durations, resource requirements, and schedule constraints?

- A. Estimate Activity Durations
- B. ControlSchedule
- C. Sequence Activities
- D. Develop Schedule

**Answer:** D

**NEW QUESTION 561**

- (Topic 4)

Which process in Project Time Management includes reserve analysis as a tool or technique?

- A. Estimate Activity Resources
- B. Sequence Activities
- C. Estimate Activity Durations
- D. Develop Schedule

**Answer:** C

**NEW QUESTION 566**

- (Topic 4)

The three processes of Project Cost Management are:

- A. Estimate Costs, Control Schedule, and Control Costs.
- B. Estimate Costs, Determine Budget, and Estimate Activity Resources.
- C. Determine Budget, Control Schedule, and Estimate Activity Resources.
- D. Estimate Costs, Determine Budget, and Control Costs.

**Answer:** D

**NEW QUESTION 570**

- (Topic 4)

A key benefit of the Manage Communications process is that it enables:

- A. The best use of communication methods.
- B. An efficient and effective communication flow.
- C. Project costs to be reduced.
- D. The best use of communication technology.

**Answer:** B

**NEW QUESTION 574**

- (Topic 4)

What is the minimum a project schedule must include?

- A. Variance analysis
- B. A planned start date and a planned finish date for each schedule activity
- C. A critical path diagram
- D. Critical chain analysis

**Answer:** B

**NEW QUESTION 575**

- (Topic 4)

What is the name of the statistical method that helps identify which factors may influence specific variables of a product or process under development or in production?

- A. Failure modes and effects analysis
- B. Design of experiments
- C. Quality checklist
- D. Risk analysis

**Answer:** B

**NEW QUESTION 577**

- (Topic 4)

An input of the Plan Procurement Management process is:

- A. Make-or-buy decisions.
- B. Activity cost estimates.
- C. Seller proposals.
- D. Procurement documents.

**Answer:** B

**NEW QUESTION 579**

- (Topic 4)

Which enterprise environmental factors may influence Plan Schedule Management?

- A. Cultural views regarding time schedules and professional and ethical behaviors
- B. Historical information and change control procedures
- C. Risk control procedures and the probability and impact matrix
- D. Resource availability and organizational culture and structure

**Answer:** D

**NEW QUESTION 583**

- (Topic 4)

While processes in the Planning Process Group seek to collect feedback and define project documents to guide project work, organizational procedures dictate when the project planning:

- A. ends.
- B. begins.
- C. delays.
- D. deviates.

**Answer:** A

**NEW QUESTION 588**

- (Topic 4)

What happens to a stakeholder's project influence over time?

- A. Increases
- B. Decreases
- C. Stays the same
- D. Has no bearing

**Answer:** B

**NEW QUESTION 593**

- (Topic 4)

At the start of a typical project life cycle, costs are:

- A. low, peak as work is carried out, and drop as the project nears the end.
- B. low, become steady as work is carried out, and increase as the project nears the end.
- C. high, drop as work is carried out, and increase as the project nears the end.
- D. high, become low as work is carried out, and drop as the project nears the end.

**Answer:** A

**NEW QUESTION 595**

- (Topic 4)

Ensuring that projects and programs are reviewed to prioritize resource allocation is a focus of which of the following?

- A. Project management
- B. Program management
- C. Portfolio management
- D. Relationship management

**Answer:** C

**NEW QUESTION 596**

- (Topic 4)

Which Perform Quality Assurance tool or technique is used to identify a problem, discover the underlying causes that lead to it, and develop preventative actions?

- A. Inspection
- B. Quality audits
- C. Design of experiments
- D. Root cause analysis

**Answer:** D

**NEW QUESTION 599**

- (Topic 4)

The following chart contains information about the tasks in a project.

Task	PV	AC	EV
1	10,000	10,000	10,000
2	10,000	8,000	10,000
3	10,000	8,000	8,000
4	9,000	12,000	10,000
5	10,000	12,000	12,000
6	10,000	10,000	12,000
7	12,000	12,000	10,000
8	10,000	8,000	9,000
9	12,000	10,000	11,000

Based on the chart, what is the schedule performance index (SPI) for Task 4?

- A. 0.83
- B. 0.9
- C. 1.11
- D. 1.33

**Answer:** C

#### NEW QUESTION 600

- (Topic 4)

A measure of cost performance that is required to be achieved with the remaining resources in order to meet a specified management goal and is expressed as the ratio of the cost needed for finishing the outstanding work to the remaining budget is known as the:

- A. budget at completion (BAC)
- B. earned value management (EVM)
- C. to-complete performance index
- D. cost performance index

**Answer:** C

#### NEW QUESTION 602

- (Topic 4)

The Monitoring and Controlling Process Group includes processes that:

- A. Establish the scope, objectives, and course of action of a project,
- B. Define a new project or a new phase of an existing project.
- C. Track, review, and regulate the progress and performance of a project.
- D. Complete the work defined in the project management plan.

**Answer:** C

#### NEW QUESTION 605

- (Topic 4)

Which type of analysis is used to determine the cause and degree of difference between the baseline and actual performance?

- A. Schedule network analysis
- B. Reserve analysis
- C. Alternative analysis
- D. Variance analysis

**Answer:** D

#### NEW QUESTION 609

- (Topic 4)

The cost performance baseline is typically displayed in the form of:

- A. An S-curve.
- B. A normal curve.
- C. A U-curve.
- D. A positive slope line.

**Answer:** A

#### NEW QUESTION 613

- (Topic 4)

How is quality control performed?

- A. By identifying quality standards that are relevant to the project and determining how to satisfy them
- B. By monitoring specific project results in compliance with relevant quality standards and determining corrective actions as needed
- C. By ensuring that the entire project team has been adequately trained in quality assurance processes
- D. By applying Monte Carlo, sampling, Pareto analysis, and benchmarking techniques to ensure conformance to quality standards

**Answer:** B

#### NEW QUESTION 616

- (Topic 4)

Who provides the inputs for the original estimates of activity durations for tasks on the project plan?

- A. Project sponsor
- B. Project manager
- C. Person responsible for project scheduling
- D. Person who is most familiar with the task

**Answer:** D

#### NEW QUESTION 621

- (Topic 4)

Which index is the calculated projection of cost performance that must be achieved on the remaining work to meet a specified management goal?

- A. Estimate at completion
- B. Cost performance
- C. Schedule performance
- D. To-complete performance

**Answer:** D

**NEW QUESTION 622**

- (Topic 4)

Which type of control tool identifies whether or not a process has a predictable performance?

- A. Cause and effect diagram
- B. Control Charts
- C. Pareto Chart
- D. Histogram

**Answer:** B

**NEW QUESTION 627**

- (Topic 4)

Which of the following tools and techniques is used to estimate cost?

- A. Budget forecast
- B. Variance analysis
- C. Activity cost estimate
- D. Three-point estimate

**Answer:** D

**NEW QUESTION 628**

- (Topic 4)

Cost of quality (COQ) refers to total cost of/to:

- A. All efforts related to quality.
- B. Product inspection activities.
- C. Maintain plan quality.
- D. Perform quality control.

**Answer:** B

**NEW QUESTION 633**

- (Topic 5)

An input to Close Project or Phase is:

- A. Accepted deliverables,
- B. Final products or services,
- C. Document updates,
- D. Work performance information.

**Answer:** A

**NEW QUESTION 635**

- (Topic 5)

Which schedule compression technique has phases or activities done in parallel that would normally have been done sequentially?

- A. Crashing
- B. Fast tracking
- C. Leads and lags adjustment
- D. Parallel task development

**Answer:** B

**NEW QUESTION 636**

- (Topic 5)

Which of the following is an example of the simplest fixed-price contract?

- A. Purchase requisition
- B. Purchase order
- C. Verbal agreement
- D. Request for quote

**Answer:** B



**NEW QUESTION 640**

- (Topic 5)

The process of formalizing acceptance of the completed project deliverables is known as:

- A. Validate Scope.
- B. Close Project or Phase.
- C. Control Quality.
- D. Verify Scope.

**Answer:** A

**NEW QUESTION 643**

- (Topic 5)

Which tool or technique used in the Control Procurements process can be conducted during the execution of the project to verify compliance with deliverables?

- A. Procurement documents
- B. Inspection and audits
- C. Estimate budget
- D. Risk register

**Answer:** B

**NEW QUESTION 644**

- (Topic 5)

An example of a group decision-making technique is:

- A. nominal group technique
- B. majority
- C. affinity diagram
- D. multi-criteria decision analysis

**Answer:** A

**NEW QUESTION 646**

- (Topic 5)

Which Knowledge Areas include processes from the Closing Process Group?

- A. Project Quality Management and Project Time Management
- B. Project Scope Management and Project Risk Management
- C. Project Stakeholder Management and Project Cost Management
- D. Project Integration Management and Project Procurement Management

**Answer:** D

**NEW QUESTION 650**

- (Topic 5)

Which of the following characteristics are found in a functional organizational structure?

- A. Little or no project manager authority, little or no resource availability, and the functional manager controls the project budget
- B. Limited project manager authority, limited resource availability, and a part-time project manager's role
- C. Low to moderate project manager authority, low to moderate resource availability, and a full-time project manager's role
- D. High to almost total project manager authority, high to almost total resource availability, and full-time project management administrative staff

**Answer:** A

**NEW QUESTION 651**

- (Topic 5)

Which type of contract is most commonly used by buying organizations because the price for goods is set at the outset and is not subject to change unless the scope of work changes?

- A. Fixed Price with Economic Price Adjustments Contract (FP-EPA)
- B. Cost-Reimbursable Contract (CR)
- C. Firm-Fixed -Price Contract (FFP)
- D. Fixed-Price-Incentive-Fee Contract (FPIF)

**Answer:** C

**NEW QUESTION 653**

- (Topic 5)

Which category of contracts are sellers legally obligated to complete, with possible financial damages if the project objectives are not met?

- A. Cost-reimbursable contracts
- B. Time and Material contracts (T&M)
- C. Fixed-price contracts
- D. Cost Plus Fixed Fee Contracts (CPFF)

**Answer:**



C

**NEW QUESTION 656**

- (Topic 5)

The links between the processes in the Process Groups are often:

- A. Intuitive
- B. Iterative
- C. Measured
- D. Monitored

**Answer: B**

**NEW QUESTION 658**

- (Topic 5)

The project management processes presented in the PMBOK Guide® should:

- A. always be applied uniformly.
- B. be selected as appropriate by the sponsor.
- C. be selected as appropriate by the project team.
- D. be applied based on ISO guidelines.

**Answer: C**

**NEW QUESTION 663**

- (Topic 5)

Which organizational process assets update is performed during the Close Procurements process?

- A. Procurement audit
- B. Lessons learned
- C. Performance reporting
- D. Payment requests

**Answer: B**

**NEW QUESTION 668**

- (Topic 5)

What is the number of stakeholders, if the project has 28 potential communication channels?

- A. 7
- B. 8
- C. 14
- D. 16

**Answer: B**

**NEW QUESTION 671**

- (Topic 5)

During which process would stakeholders provide formal acceptance of the completed project scope?

- A. Perform Quality Control
- B. Verify Scope
- C. Control Scope
- D. Develop Schedule

**Answer: B**

**NEW QUESTION 676**

- (Topic 5)

External organizations that have a special relationship with the enterprise and provide specialized expertise are called:

- A. Customers.
- B. Business partners.
- C. Sellers.
- D. Functional managers.

**Answer: B**

**NEW QUESTION 678**

- (Topic 5)

The process for performing variance analysis may vary, depending on:

- A. scenario building, technology forecasting, and forecast by analogy.
- B. working relationships among various stakeholders and team members.
- C. application area, the standard used, and the industry,
- D. work to be completed next.

Answer: C

**NEW QUESTION 682**

- (Topic 5)

Which is the correct formula for calculating expected activity cost for three-point estimating?

- A.  $C_e = (C_0 + 6C_m + C_p)/4$
- B.  $C_e = (6C_0 + C_m + C_p)/4$
- C.  $C_e = (C_0 + 4C_m + C_p)/6$
- D.  $C_e = (C_0 + C_{,,,} + 4C_p) / 6$

Answer: C

**NEW QUESTION 685**

- (Topic 5)

Retreating from an actual or potential conflict or postponing the issue to be better prepared or to be resolved by others describes which of the five general techniques for managing conflict?

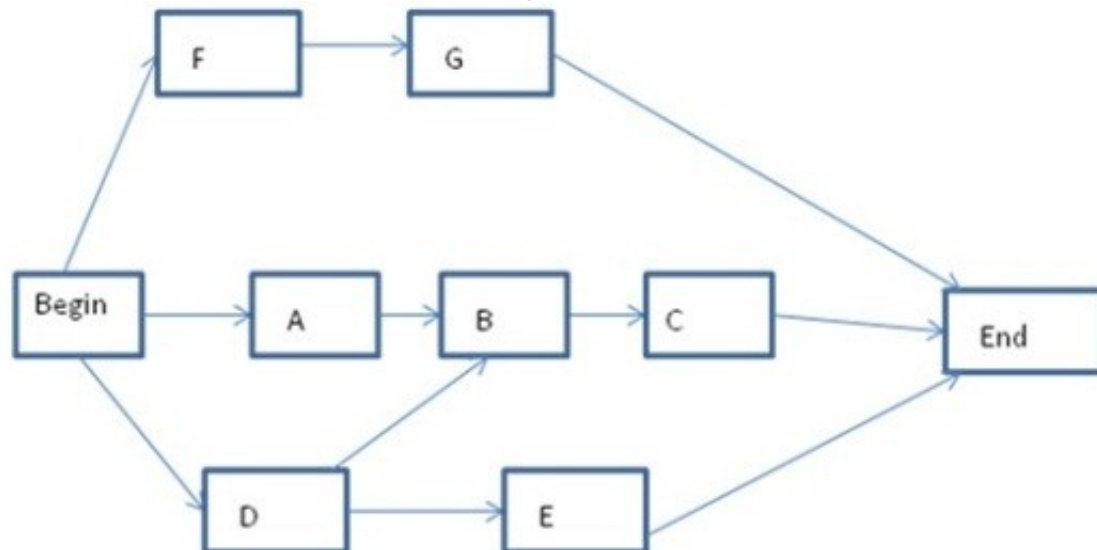
- A. Smooth/accommodate
- B. Withdraw/avoid
- C. Compromise/reconcile
- D. Force/direct

Answer: B

**NEW QUESTION 690**

- (Topic 5)

Exhibit A is an example of which of the following types of Sequence Activities?



**Exhibit A**

- A. Activity-on-arrow diagramming
- B. Precedence diagramming
- C. Project schedule network diagramming
- D. Mathematical analysis diagramming

Answer: B

**NEW QUESTION 693**

- (Topic 5)

The cost benefit analysis tool is used for creating:

- A. Pareto charts.
- B. quality metrics.
- C. change requests,
- D. Ishikawa diagrams.

Answer: B

**NEW QUESTION 695**

- (Topic 5)

What type of reward can hurt team cohesiveness?

- A. Sole-sum
- B. Win-lose
- C. Lose-win
- D. Partial-sum

Answer: B

**NEW QUESTION 696**

- (Topic 5)

Which of the following is a complete set of indexed contract documentation, including the closed contract?

- A. Procurement package
- B. Negotiated settlements
- C. Procurement file
- D. Procurement management plan

**Answer:** C

**NEW QUESTION 699**

.....

## Thank You for Trying Our Product

\* 100% Pass or Money Back

All our products come with a 90-day Money Back Guarantee.

\* One year free update

You can enjoy free update one year. 24x7 online support.

\* Trusted by Millions

We currently serve more than 30,000,000 customers.

\* Shop Securely

All transactions are protected by VeriSign!

**100% Pass Your PMP Exam with Our Prep Materials Via below:**

<https://www.certleader.com/PMP-dumps.html>