

Exam Questions PL-600

Microsoft Power Platform Solution Architect

<https://www.2passeasy.com/dumps/PL-600/>



NEW QUESTION 1

DRAG DROP

You are designing a business strategy for a client who has a Power Platform solution. The client works with critical data where any data loss creates a high risk. You need to document the failover process for the stakeholders.

Which four actions should you perform in sequence? To answer, move the appropriate actions from the list of actions to the answer area and arrange them in the correct order.

Select and Place:

Actions

Answer Area

- If the second call is successful, the application continues normally.
- The application makes a service call to the datacenter.
- The application receives an exception after attempting the service call.
- The application automatically tries the call again.
- The application redirects calls to an on-premises server.



- A. Mastered
- B. Not Mastered

Answer: A

Explanation:

Actions

Answer Area

- If the second call is successful, the application continues normally.
- The application makes a service call to the datacenter.
- The application receives an exception after attempting the service call.
- The application automatically tries the call again.
- The application redirects calls to an on-premises server.



- The application makes a service call to the datacenter.
- The application receives an exception after attempting the service call.
- The application redirects calls to an on-premises server.
- If the second call is successful, the application continues normally.

NEW QUESTION 2

A client uses Dynamics 365 Sales, Power BI datasets, and Power BI dataflows.

The Dynamics 365 Sales implementation has security roles that restrict data export. You need to ensure that data has the same restrictions in Power BI as it does in Dynamics 365 Sales. You need to design the security to avoid sensitive data from being seen.

Which two actions should you recommend? Each correct answer presents part of the solution.

NOTE: Each correct selection is worth one point.

- A. Use Microsoft Dataverse restrictions before setting up the Power BI reports.
- B. Limit the role in Dynamics 365 Sales to only data allowed so it cannot be exported to Microsoft Excel.
- C. Limit the role and ensure that exporting to Microsoft Excel is not allowed in both Dynamics 365 Sales and Power BI.
- D. Share Power BI dashboards only with users who are supported to see this data.

Answer: AB

Explanation:

A: When you share a dashboard or report, the people you share it with can view it and interact with it, but can't edit it. They see the same data that you see in the dashboard and reports and get access to the entire underlying dataset unless row-level security (RLS) is applied to the underlying dataset.

B: Depending on the sensitivity of an organization's data, it is often necessary to disable the ability to export or print reports. Reference:

<https://docs.microsoft.com/en-us/power-bi/collaborate-share/service-share->

dashboards

NEW QUESTION 3

You are designing a self-service portal for a company.

The portal must meet the following requirements:

Customers must be able to submit and review cases.

Customers must be able to chat with service representatives in near real time.

▪ Allow service representatives to select cases from queues and use knowledge articles to resolve customer concerns. You need to recommend solutions for the company that do not require custom development.

Which three apps or services should you recommend? Each correct answer presents part of the solution.

NOTE: Each correct selection is worth one point.

- A. Dynamics 365 Field Service
- B. Dynamics 365 Customer Service
- C. Omnichannel for Customer Service
- D. Customer Insights
- E. Customer self-service portal

Answer: BCE

Explanation:

▪ B: Use Dynamics 365 Customer Service to: Track customer issues through cases Record all interactions related to a case Share information in the knowledge base

Create queues and route cases to the right channels

C: Omnichannel for Customer Service offers a suite of capabilities that extend the power of Dynamics 365 Customer Service Enterprise to enable organizations to instantly connect and engage with their customers across digital messaging channels.

E: Customer self-service portal: A customer self-service portal enables customers to access self-service knowledge, support resources, view the progress of their cases, and provide feedback.

Note: Based on the selected environment in Power Apps, you can create a Dataverse starter portal or a portal in an environment containing customer engagement apps (Dynamics 365 Sales, Dynamics 365 Customer Service, Dynamics 365 Field Service, Dynamics 365 Marketing, and Dynamics 365 Project Service Automation).

Reference: <https://docs.microsoft.com/en-us/powerapps/maker/portals/portal-templates> <https://docs.microsoft.com/en-us/dynamics365/customer-service/embed-chat-widget-portal> Testlet 2

Case study

This is a case study. Case studies are not timed separately. You can use as much exam time as you would like to complete each case. However, there may be additional case studies and sections on this exam. You must manage your time to ensure that you are able to complete all questions included on this exam in the time provided.

To answer the questions included in a case study, you will need to reference information that is provided in the case study. Case studies might contain exhibits and other resources that provide more information about the scenario that is described in the case study. Each question is independent of the other questions in this case study.

At the end of this case study, a review screen will appear. This screen allows you to review your answers and to make changes before you move to the next section of the exam. After you begin a new section, you cannot return to this section.

To start the case study

To display the first question in this case study, click the Next button. Use the buttons in the left pane to explore the content of the case study before you answer the questions. Clicking these buttons displays information such as business requirements, existing environment, and problem statements. If the case study has an All Information tab, note that the information displayed is identical to the information displayed on the subsequent tabs. When you are ready to answer a question, click the Question button to return to the question.

Background

First Up Consulting recruits information technology (IT) workers for temporary or permanent positions at client companies. The company operates offices in multiple countries/regions.

First Up has both full-time and part-time employees. The company has a team of worker support agents that respond to inquiries from current and prospective workers. Some of the worker support agents are multilingual.

The company does not have a standardized tool used for reporting purposes. The organization engages you to implement a new Power Platform solution. Workers are managed by a dedicated team that includes one primary recruiter and a contract assistant. Many client companies live in areas that do not allow for mobile data connections.

Current environment

Existing systems and processes

First Up uses an on-premises system to manage current and historical patient data including medications and medical visits.

The company plans to reference historical data in the existing system. The records held in these systems will not be migrated to the new solution except for medication information. Employee authentication with the existing system is provided by an on-premises Active Directory instance that is linked to Azure Active Directory.

An appointment record is created for each visit with a worker. The record includes worker contact information, preferred language, the date and time of the appointment, and other relevant data. This information is reviewed by the worker's primary recruiter.

First Up has no current capabilities for forecasting future worker needs based on the data held.

Client company visits

Before First Up signs a contract to place workers at a client company, a member of the audit team visits the company and interviews company management. Audit members use different types of devices including Android and iOS devices. First Up has no plans to require the use of a single type of device. Audit team members currently record information about workers on paper forms. Team members enter information from paper forms into the system when they return to the office.

First Up audits client companies at least once each year but may schedule additional visits based on feedback from workers that they place at a client company.

Requirements General

There is no standardized communication tool across the company, and this causes communication issues between different teams. First up employees must be able to contact each other by using a secure system to ask and answer questions about medical cases.

Workers must be able to communicate in near real-time with worker support agents.

Client company visits

Audit team records must be locked after they have been reviewed by a First Up manager. No further edits to the record can be carried out. This must be implemented using standard available system functionality. Audit teams must be able to enter records of their visits to the companies where they have or may place workers. Audit teams must be able to update any necessary records with the latest information. The solution must support tracking of security clearance information for a worker including the date, status, and certifying agency. When a worker makes an appointment, the appointments must appear in the timeline for the worker's contact record.

Job history information

The solution must provide a worker appointment booking system that can access worker historical job placement data.

The solution must allow employees to associate a primary recruiter with each worker. The solution must also allow multiple secondary recruiters to be associated with each worker. Every worker assessment performed must be validated and countersigned by the primary recruiter for a worker.

Job posting data from previous work engagements must be accessible by the Power Platform solution to ensure that new job postings are accurate.

First Up staff members must be able to view and update worker records. They must be able to see current and historical job placement data on the same form in the new solution.

Worker access

The solution must support workers that speak different languages. The solution must provide automatic translation capabilities. The solution must support near real-time communications between workers and recruiters.

Workers must be able to view their records online. Workers must be able to enter any additional information that is required by or may be helpful to recruiters. The solution must provide workers a way to search for general information about available positions.

Workers must be able to request copies of their records by using a chatbot. Workers must be able to provide information to a recruiter as needed.

Data platform

Audit teams must have the ability to view worker information on their mobile devices.

Audit teams must be able to record data during visits to locations where workers are placed.

The solution must support the ability for a corporate governance auditing team to periodically audit the organization's records, policies, and procedures.

Reporting and analytics

The reporting and analytics team must be able to create reports that include data from all facilities and all workers. Management reports must present an overview of the entire organization. Other reports may be limited to specific offices.

You must create dashboards that show the status across all groups of workers. The dashboards must be embedded into the Power Platform apps. Updates to data must be displayed in near real time.

Security

Authentication for all user types must be managed by a single platform. IT teams must use PowerShell to apply security permissions for users. Worker records must only be viewed by the recruiting office that the worker visits.

Worker still records must be archived after ten years and are then removed from the main system. Worker information must not be deleted from the system while skill and job placement history records for the worker exist in the system. User security roles must be customized to ensure that users are able to interact only with the specific data in which they need access.

Workers must be able to sign into a portal by using their own email address. Workers must be required to use a secure method of authentication to be able to view their data.

Alerts regarding the number of recruited and placed at client companies must be updated as background processes. Issues

The organization reports the following issues:

Recruiters report that they cannot see historical job placement data for workers.

API usage reports show that the number of API calls made exceeds limits. This causes delays saving data. Users cannot view Power BI reports within the Power Platform apps.

Some security clearance information for workers not visible from within the Power Platform solution.

Audit teams report that they cannot view or edit worker data when the device on which they access the solution does not have network connectivity. The testing team reports that one of the canvas apps is not working as expected. An error message displays as specific pages load.

NEW QUESTION 4

HOTSPOT

You are designing a Power Platform solution for a company. You have the following requirements:

Users in the human resources department must be able to create tasks.

Users in the human resources department must be able to assign cases to other users.

You need to recommend security settings to the company.

What should you recommend? To answer, select the appropriate options in the answer area.

NOTE: Each correct selection is worth one point.

Answer Area

Business requirement	Solution
Users in the human resources department must be able to create tasks.	<div><div></div><div>Assign only Create rights to activities. Assign Create and Read rights to activities. Assign user-level assign rights to the human resources case table. Assign organization-level rights to the human resources case table.</div></div>
Users in the human resources department must be able to assign cases to other users.	<div><div></div><div>Assign only Create rights to activities. Assign Create and Read rights to activities. Assign user-level assign rights to the human resources case table. Assign organization-level assign rights to the human resources case table.</div></div>

- A. Mastered
B. Not Mastered

Answer: A

Explanation:

Box 1: Assign only Create rights to activities

You require the same set of Dataverse privileges and access rights to work with custom activities as those required to work with custom entities. Task-based privileges, at the bottom of the form, give a user privileges to perform specific tasks, such as publish articles.

Box 2: Assign User-level assign rights to human resources case table.

Record-level privileges define which tasks a user with access to the record can do, such as Read, Create, Delete, Write, Assign, Share, Append, and Append To. For user and team owned records, the access level choices for most privileges are tiered Organization, Business Unit, Business Unit and Child Business Unit or only the user's own records. That means for read privilege on contact, I could set user owned, and the user would only see their own records.

Incorrect Answers:

For security purposes, records that are organization owned, the only access level choices is either the user can do the operation or can't.

Reference:

<https://docs.microsoft.com/en-us/power-platform/admin/security-roles-privileges>

<https://docs.microsoft.com/en-us/power-platform/admin/wp-security-cds>

NEW QUESTION 5

HOTSPOT

A company plans to create a Power Apps portal to manage support cases for customers. The company has an account hierarchy for customers. The hierarchy supports accounts, cases, and contacts where both contacts and cases belong to their relevant account.

The company has the following requirements:

Portal users must only see the notes for the cases that they manage. Portal users must only see cases that are submitted by their colleagues.

You need to design the security model for the portal.

Which entity permission scope should you use? To answer, select the appropriate options in the answer area.

NOTE: Each correct selection is worth one point.

Hot Area:

Answer Area

Requirement

Scope

Portal users must only see the notes for the cases that they manage.

	▼
Self	
Parent	
Contact	
Account	

Portal users must only see cases that are submitted by their colleagues.

	▼
Self	
Global	
Contact	
Account	

- A. Mastered
- B. Not Mastered

Answer: A

Explanation:

Box 1: Contact

With Contact scope, a signed-in user in the role for which the permission record is defined will have the rights granted by that permission only for records that are related to that user's contact record via a defined relationship.

Box 2: Account

With Account Scope, a signed-in user in the role for which the permission record is defined will have the rights granted by that permission only for records that are related to that user's parent account record via a defined relationship.

This scope means that the entity list will only show the records of the selected entity that are associated to the user's parent account. For example, if an entity permission allows Read access to Lead entity with the Account scope, the user having this permission can view all the leads of only the parent account of the user.

Incorrect Answers:

Self Scope allows you to define the rights a user has to their own Contact (Identity) record. Users can use entity forms or web forms to make changes to their own Contact record linked with their profile.

Parental scope: In this most complex case, permissions are granted for an entity that is a relationship away from an entity for which an Entity Permission record has already been defined. This permission is actually a child record of the parent entity permission.

Reference: <https://docs.microsoft.com/en-us/powerapps/maker/portals/configure/assign-entity-permissions>

NEW QUESTION 6

HOTSPOT

You are designing the security model for a Power Platform solution. The security model must meet the following requirements:

Restrict sharing of data between Power Automate connectors.

Ensure that environment administrators only see users who require access in the enabled user list. You need to recommend security features for the solution.

What should you recommend? To answer, select the appropriate options in the answer area.

NOTE: Each correct selection is worth one point.

Hot Area:

Answer Area

Requirement

Feature

Restrict sharing of data between Power Automate connectors

▼

Security group

Data loss prevention policy

Ensure that environment administrators only see users who require access in the enabled user list.

▼

Security group

Data loss prevention policy

- A. Mastered
- B. Not Mastered

Answer: A

Explanation:

Box 1: Data loss prevention policy

Data loss prevention (DLP) policies enforce rules for which connectors can be used together by classifying connectors as either Business or Non-Business. If you put a connector in the Business group, it can only be used with other connectors from that group in any given app or flow. Sometimes you might want to block the usage of certain connectors altogether by classifying them as Blocked.

Box 2: Security group

If your company has multiple Microsoft Dataverse environments, you can use security groups to control which licensed users can be a member of a particular environment.

Reference:

<https://docs.microsoft.com/en-us/power-platform/admin/wp-data-loss-prevention>

<https://docs.microsoft.com/en-us/power-platform/admin/control-user-access>

NEW QUESTION 7

A company has a Power Platform environment that connects to a third-party marketing application.

The company reports that the data in the Power Platform lead table does not match data from the marketing application. Issues include:

- _ The owner data in the lead table and the third-party application do not match.
 - _ The Topic column has more information than the related record from the marketing application. There are differences in how telephone numbers are formatted.
- You need to determine which processes are causing the issues.

Which three processes may be causing the differences observed? Each correct answer presents a complete solution.

NOTE: Each correct selection is worth one point.

- A. Dataflow
- B. Business rule
- C. Classic workflow
- D. Power Automate cloud flow
- E. Duplicate detection rule

Answer: ABC

Explanation:

A: With advanced data preparation available in Power Apps, you can create a collection of data called a dataflow, which you can then use to connect with business data from various sources, clean the data, transform it, and then load it to Microsoft Dataverse or your organization's Azure Data Lake Gen2 storage account.

_ B: By combining conditions and actions, you can do any of the following with business rules: Set column values

Clear column values

Set column requirement levels Show or hide columns

Enable or disable columns

Validate data and show error messages

Create business recommendations based on business intelligence.

C: Duplicate detection works by comparing generated match codes of existing records with each new record being created. These match codes are created as each new record is created. Therefore, there is potential for one or more duplicate records to be created if they are processed at the exact same moment. In addition to detecting duplicates as they are created, you should schedule duplicate detection jobs to check for other potential duplicate records.

Reference:

<https://docs.microsoft.com/en-us/powerapps/maker/data-platform/data-platform-create-business-rule>

<https://docs.microsoft.com/en-us/powerapps/maker/data-platform/create-and-use-dataflows>

<https://docs.microsoft.com/en-us/powerapps/developer/data-platform/duplicaterule-entities>

NEW QUESTION 8

HOTSPOT

You are supporting the go-live process for a company. The company is responsible for migrating data to the Power Platform by using a custom solution. The company reports the following issues:

Migration processes fail due to operation timeouts. Records that include lookup columns often fail to load.

You need to recommend a solution.

What should you recommend? To answer, select the appropriate options in the answer area.

NOTE: Each correct selection is worth one point.

Hot Area:

Answer Area

Issue

Solution

Migration processes fail due to operation timeouts.

▼
Increase multithreading and/or batch size settings.
Decrease multithreading and/or batch size settings.
Ensure you are loading data into all tables at the same time.
Ensure you are loading data into tables in a particular order.

Records that include lookup columns often fail to load.

▼
Increase multithreading and/or batch size settings.
Decrease multithreading and/or batch size settings.
Ensure you are loading data into all tables at the same time.
Ensure you are loading data into tables in a specific order.

- A. Mastered
 B. Not Mastered

Answer: A

Explanation:

Box 1: Increase multithreading and/or batch size settings Box 2: Ensure you are loading data in a specific order.

Load the base tables in the hierarchies first.

Testlet 2 Case study

This is a case study. Case studies are not timed separately. You can use as much exam time as you would like to complete each case. However, there may be additional case studies and sections on this exam. You must manage your time to ensure that you are able to complete all questions included on this exam in the time provided.

To answer the questions included in a case study, you will need to reference information that is provided in the case study. Case studies might contain exhibits and other resources that provide more information about the scenario that is described in the case study. Each question is independent of the other questions in this case study.

At the end of this case study, a review screen will appear. This screen allows you to review your answers and to make changes before you move to the next section of the exam. After you begin a new section, you cannot return to this section.

To start the case study

To display the first question in this case study, click the Next button. Use the buttons in the left pane to explore the content of the case study before you answer the questions. Clicking these buttons displays information such as business requirements, existing environment, and problem statements. If the case study has an All Information tab, note that the information displayed is identical to the information displayed on the subsequent tabs. When you are ready to answer a question, click the Question button to return to the question.

Background

First Up Consulting recruits information technology (IT) workers for temporary or permanent positions at client companies. The company operates offices in multiple countries/regions.

First Up has both full-time and part-time employees. The company has a team of worker support agents that respond to inquiries from current and prospective workers. Some of the worker support agents are multilingual.

The company does not have a standardized tool used for reporting purposes. The organization engages you to implement a new Power Platform solution. Workers are managed by a dedicated team that includes one primary recruiter and a contract assistant. Many client companies live in areas that do not allow for mobile data connections.

Current environment

Existing systems and processes

First Up uses an on-premises system to manage current and historical patient data including medications and medical visits.

The company plans to reference historical data in the existing system. The records held in these systems will not be migrated to the new solution except for medication information. Employee authentication with the existing system is provided by an on-premises Active Directory instance that is linked to Azure Active Directory.

An appointment record is created for each visit with a worker. The record includes worker contact information, preferred language, the date and time of the appointment, and other relevant data. This information is reviewed by the worker's primary recruiter.

First Up has no current capabilities for forecasting future worker needs based on the data held.

Client company visits

Before First Up signs a contract to place workers at a client company, a member of the audit team visits the company and interviews company management. Audit members use different types of devices including Android and iOS devices. First Up has no plans to require the use of a single type of device. Audit team members currently record information about workers on paper forms. Team members enter information from paper forms into the system when they return to the office.

First Up audits client companies at least once each year but may schedule additional visits based on feedback from workers that they place at a client company.

Requirements General

There is no standardized communication tool across the company, and this causes communication issues between different teams. First up employees must be able to contact each other by using a secure system to ask and answer questions about medical cases.

Workers must be able to communicate in near real-time with worker support agents.

Client company visits

Audit team records must be locked after they have been reviewed by a First Up manager. No further edits to the record can be carried out. This must be implemented using standard available system functionality. Audit teams must be able to enter records of their visits to the companies where they have or may place workers. Audit teams must be able to update any necessary records with the latest information. The solution must support tracking of security clearance information for a worker including the date, status, and certifying agency. When a worker makes an appointment, the appointments must appear in the timeline for the worker's contact record.

Job history information

The solution must provide a worker appointment booking system that can access worker historical job placement data.

The solution must allow employees to associate a primary recruiter with each worker. The solution must also allow multiple secondary recruiters to be associated with each worker. Every worker assessment performed must be validated and countersigned by the primary recruiter for a worker.

Job posting data from previous work engagements must be accessible by the Power Platform solution to ensure that new job postings are accurate. First Up staff members must be able to view and update worker records. They must be able to see current and historical job placement data on the same form in the new solution.

Worker access

The solution must support workers that speak different languages. The solution must provide automatic translation capabilities. The solution must support near real-time communications between workers and recruiters.

Workers must be able to view their records online. Workers must be able to enter any additional information that is required by or may be helpful to recruiters. The solution must provide workers a way to search for general information about available positions.

Workers must be able to request copies of their records by using a chatbot. Workers must be able to provide information to a recruiter as needed.

Data platform

Audit teams must have the ability to view worker information on their mobile devices.

Audit teams must be able to record data during visits to locations where workers are placed.

The solution must support the ability for a corporate governance auditing team to periodically audit the organization's records, policies, and procedures.

Reporting and analytics

The reporting and analytics team must be able to create reports that include data from all facilities and all workers. Management reports must present an overview of the entire organization. Other reports may be limited to specific offices.

You must create dashboards that show the status across all groups of workers. The dashboards must be embedded into the Power Platform apps. Updates to data must be displayed in near real time.

Security

Authentication for all user types must be managed by a single platform. IT teams must use PowerShell to apply security permissions for users. Worker records must only be viewed by the recruiting office that the worker visits.

Worker still records must be archived after ten years and are then removed from the main system. Worker information must not be deleted from the system while skill and job placement history records for the worker exist in the system. User security roles must be customized to ensure that users are able to interact only with the specific data in which they need access.

Workers must be able to sign into a portal by using their own email address. Workers must be required to use a secure method of authentication to be able to view their data.

Alerts regarding the number of recruited and placed at client companies must be updated as background processes. Issues

The organization reports the following issues:

Recruiters report that they cannot see historical job placement data for workers.

API usage reports show that the number of API calls made exceeds limits. This causes delays saving data. Users cannot view Power BI reports within the Power Platform apps.

Some security clearance information for workers not visible from within the Power Platform solution.

Audit teams report that they cannot view or edit worker data when the device on which they access the solution does not have network connectivity. The testing team reports that one of the canvas apps is not working as expected. An error message displays as specific pages load.

NEW QUESTION 9

You need to recommend an authentication solution for the planned implementation of Dynamics 365. What should you include in the recommendation?

- A. Use synchronized identities.
- B. Use the Office 365 tenant for Dynamics 365 Customer Service.
- C. Create a new tenant for Dynamics 365 Customer Service.
- D. Use federated identities

Answer: A

Explanation:

Scenario: Ensure that employees can sign in to all Microsoft apps by using one set of credentials per employee.

Synchronized identity. Synchronize on-premises directory objects with Microsoft 365 and manage your users on-premises. You can also synchronize passwords so that the users have the same password on-premises and in the cloud, but they will have to sign in again to use Microsoft 365.

Incorrect Answers:

D: The benefit of federation is a single sign-on experience across Dynamics 365 Customer Engagement (on-premises) and Dynamics 365 Customer Engagement (on-premises) systems. This type of identity management is useful for large corporations that have hundreds or thousands of established users.

Reference: <https://docs.microsoft.com/en-us/power-platform/admin/manage-user-account-synchronization>

NEW QUESTION 10

HOTSPOT

You need to recommend a solution to meet user interface requirements.

What should you recommend? To answer, select the appropriate options in the answer area.

NOTE: Each correct selection is worth one point.

Hot Area:

Answer Area

Requirement	Solution
Visual representation of gauge readings with minimum and maximum tolerances.	<div> <div></div> <div> Create and embed a Power BI radial gauge. Create and embed a custom visualization component. Create and embed a standard Power Apps donut chart. </div> </div>
Add visibility to the manufacturing inspection records for onsite technicians.	<div> <div></div> <div> Configure mobile offline synchronization. Add an inspection order to the work order form Modify the sitemap for Dynamics 365 Field Service. </div> </div>

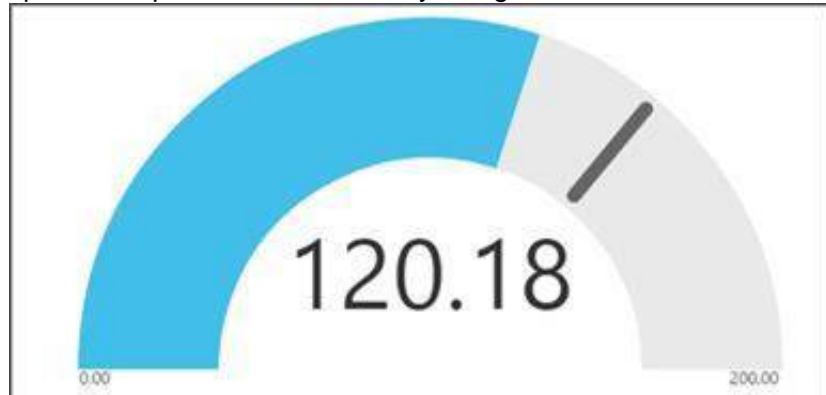
- A. Mastered
- B. Not Mastered

Answer: A

Explanation:

Box 1: Create and embed a Power BI radial gauge

A radial gauge chart has a circular arc and shows a single value that measures progress toward a goal or a Key Performance Indicator (KPI). The line (or needle) represents the goal or target value. The shading represents the progress toward that goal. The value inside the arc represents the progress value. Power BI spreads all possible values evenly along the arc, from the minimum (left-most value) to the maximum (right-most value).

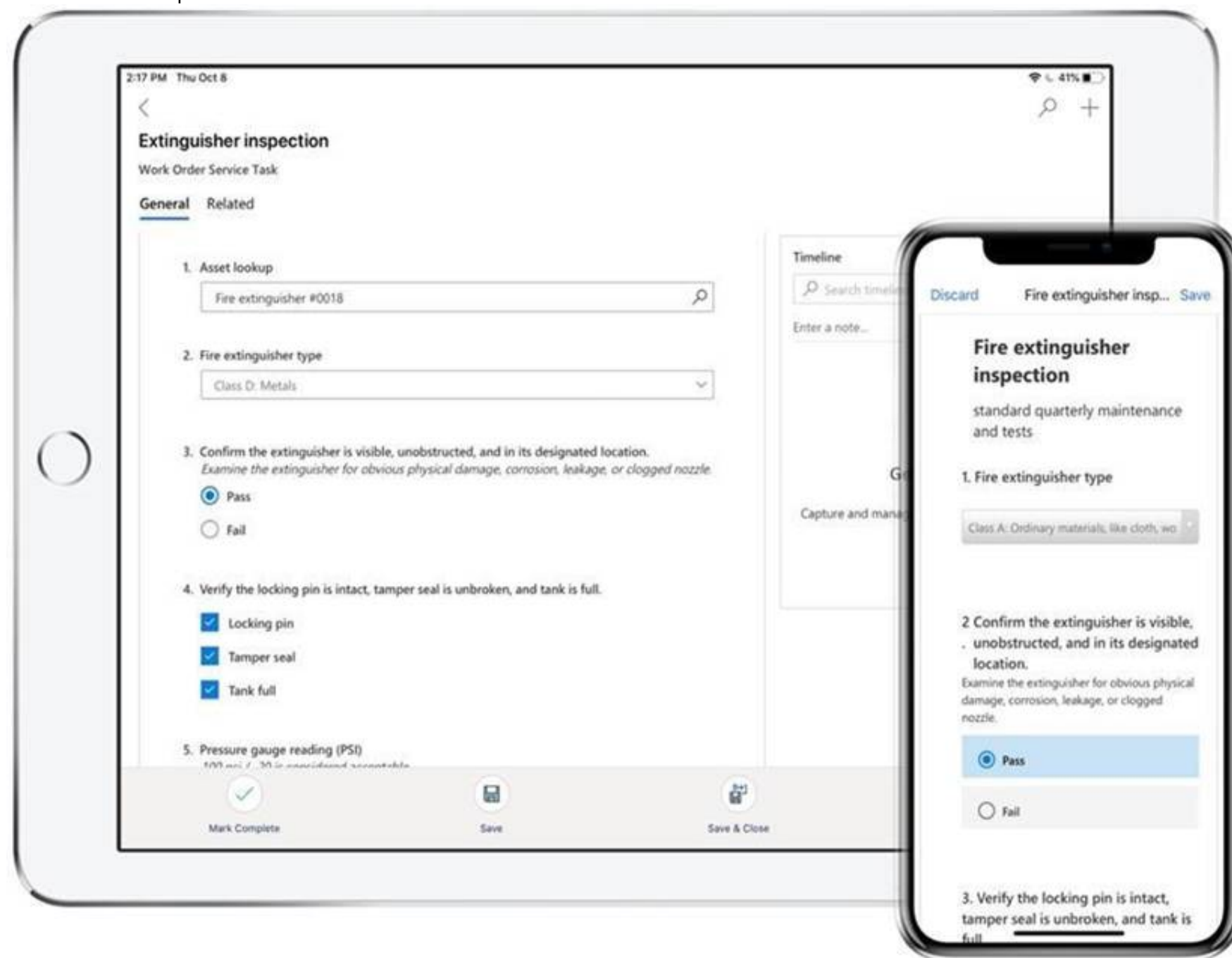


In this example, you're a car retailer tracking the sales team's average sales per month. The needle represents a 140 cars sales goal. The minimum possible average sales is 0 and the maximum is 200. The blue shading shows that the team is averaging approximately 120 sales this month.

Box 2: Add an inspection order to the work order form

You can add inspections to work orders in Dynamics 365 Field Service.

Field Service inspections are digital forms that technicians use to quickly and easily answer a list of questions as part of a work order. The list of questions can include safety protocols, pass-and-fail tests for a customer asset, an interview with a customer, or other audits and assessments performed before, during, or after a work order. Example:



Reference:

<https://docs.microsoft.com/en-us/power-bi/visuals/power-bi-visualization-radial-gauge-charts>

<https://docs.microsoft.com/en-us/dynamics365/field-service/inspections>

NEW QUESTION 10

HOTSPOT

You design a Power Platform solution for a customer. The solution uses Microsoft Dataverse as the data store. You are managing the go-live process for the solution. The customer reports the following performance issues:

Form load time is much slower than it was during testing.

Overall system performance has been significantly slower than it was during testing. You need to recommend how to troubleshoot system performance.

Which actions should you recommend? To answer, select the appropriate options in the answer area.

NOTE: Each correct selection is worth one point.

Hot Area: Correct

[MISSING]

- A. Mastered
- B. Not Mastered

Answer: A

Explanation:

Box 1: Review the fields that are on the form

Keep the number of table columns (fields) to a minimum.

The more table columns (formerly referred to as fields) you have in a form, the more data that needs to be downloaded to view each record.

Box 2: Review one to many relationships to verify whether cascade settings are necessary.

Reference: <https://docs.microsoft.com/en-us/powerapps/maker/model-driven-apps/optimize-form-performance>

NEW QUESTION 12

You are a Power Apps architect for a company. The IT administrator designs a Power Apps app that is ready to be tested. The company uses application lifecycle management (ALM). Each version and solution component must be tracked as it is tested.

You need to recommend a strategy to deploy solutions for the user acceptance testing environment. What should you recommend?

- A. Use Package Deployer and deploy a managed solution.
- B. Use Package Deployer and deploy an unmanaged solution.
- C. Use Solution Packager and deploy a managed solution.
- D. Use Solution Packager and deploy an unmanaged solution.

Answer: D

Explanation:

Solution Packager is a tool that can unpack a compressed solution file into multiple XML files and other files, so they can be easily managed by a source control system. Unmanaged solution: An open solution with no restrictions on what can be added, removed, or modified. This is recommended during development of a solution.

Incorrect Answers:

A, B: Package Deployer lets administrators or developers deploy comprehensive packages of relevant assets to Dataverse instances.

C: Managed solution

A completed solution ready to be imported into an organization. Once imported, components can't be added or removed, although they can optionally allow further customization. This is recommended when development of the solution is complete.

Reference: <https://docs.microsoft.com/en-us/power-platform/alm/solution-packager-tool>

NEW QUESTION 15

.....

THANKS FOR TRYING THE DEMO OF OUR PRODUCT

Visit Our Site to Purchase the Full Set of Actual PL-600 Exam Questions With Answers.

We Also Provide Practice Exam Software That Simulates Real Exam Environment And Has Many Self-Assessment Features. Order the PL-600 Product From:

<https://www.2passeasy.com/dumps/PL-600/>

Money Back Guarantee

PL-600 Practice Exam Features:

- * PL-600 Questions and Answers Updated Frequently
- * PL-600 Practice Questions Verified by Expert Senior Certified Staff
- * PL-600 Most Realistic Questions that Guarantee you a Pass on Your FirstTry
- * PL-600 Practice Test Questions in Multiple Choice Formats and Updatesfor 1 Year