

Exam Questions NSE5_FMG-7.2

Fortinet NSE 5 - FortiManager 7.2

https://www.2passeasy.com/dumps/NSE5_FMG-7.2/



NEW QUESTION 1

- (Exam Topic 1)

Which configuration setting for FortiGate is part of a device-level database on FortiManager?

- A. VIP and IP Pools
- B. Firewall policies
- C. Security profiles
- D. Routing

Answer: D

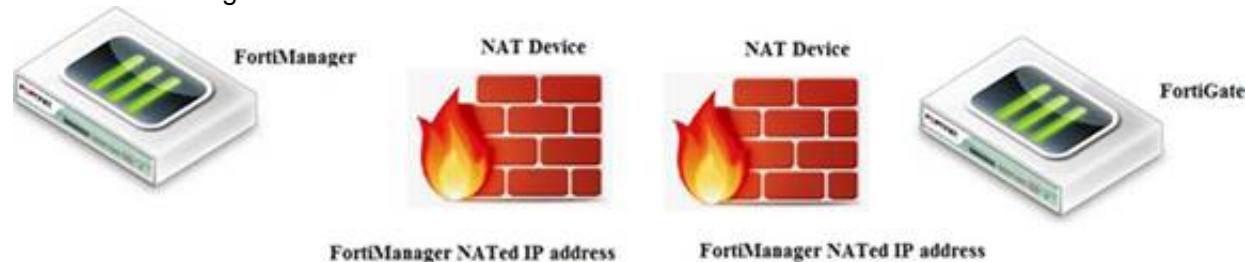
Explanation:

The FortiManager stores the FortiGate configuration details in two distinct databases. The device-level database includes configuration details related to device-level settings, such as interfaces, DNS, routing, and more. The ADOM-level database includes configuration details related to firewall policies, objects, and security profiles.

NEW QUESTION 2

- (Exam Topic 1)

View the following exhibit.



If both FortiManager and FortiGate are behind the NAT devices, what are the two expected results? (Choose two.)

- A. FortiGate is discovered by FortiManager through the FortiGate NATed IP address.
- B. FortiGate can announce itself to FortiManager only if the FortiManager IP address is configured on FortiGate under central management.
- C. During discovery, the FortiManager NATed IP address is not set by default on FortiGate.
- D. If the FCFM tunnel is torn down, FortiManager will try to re-establish the FGFM tunnel.

Answer: AC

Explanation:

FortiManager can discover FortiGate through a NATed FortiGate IP address. If a FortiManager NATed IP address is configured on FortiGate, then FortiGate can announce itself to FortiManager. FortiManager will not attempt to re-establish the FGFM tunnel to the FortiGate NATed IP address, if the FGFM tunnel is interrupted. Just like it was in the NATed FortiManager scenario, the FortiManager NATed IP address in this scenario is not configured under FortiGate central management configuration.

NEW QUESTION 3

- (Exam Topic 1)

View the following exhibit, which shows the Download Import Report:

```
Start to import config from devices(Remote-FortiGate) vdom (root)to adom (MyADOM),
Package(Remote-FortiGate)
"firewall address", SUCCESS,"(name=REMOTE_SUBNET,oid=580, new object)"
"firewall policy",SUCCESS,"(name=1, oid=990,new object)"
"firewall policy",FAIL,"(name=ID:2(#2), oid=991, reason=interface(interface binding
Contradiction.detail:any<-port6)binding fail)"
```

Why it is failing to import firewall policy ID 2?

- A. The address object used in policy ID 2 already exist in ADON database with any as interface association and conflicts with address object interface association locally on the FortiGate
- B. Policy ID 2 is configured from interface any to port6 FortiManager rejects to import this policy because any interface does not exist on FortiManager
- C. Policy ID 2 does not have ADOM Interface mapping configured on FortiManager
- D. Policy ID 2 for this managed FortiGate already exists on FortiManager in policy package named Remote-FortiGate.

Answer: A

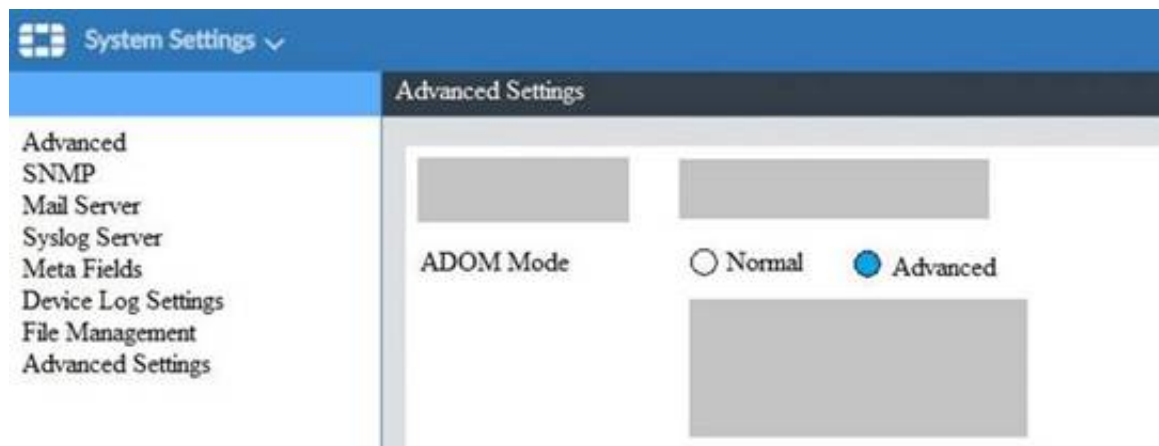
Explanation:

FortiManager_6.4_Study_Guide-Online – page 331 & 332

NEW QUESTION 4

- (Exam Topic 1)

View the following exhibit.



What is the purpose of setting ADOM Mode to Advanced?

- A. The setting allows automatic updates to the policy package configuration for a managed device
- B. The setting enables the ADOMs feature on FortiManager
- C. This setting allows you to assign different VDOMs from the same FortiGate to different ADOMs.
- D. The setting disables concurrent ADOM access and adds ADOM locking

Answer: C

Explanation:

Reference:

<https://docs.fortinet.com/document/fortianalyzer/7.0.0/administration-guide/66530/adom-device-modes>

NEW QUESTION 5

- (Exam Topic 1)

An administrator run the reload failure command: diagnose test deploymanager reload config <deviceid> on FortiManager. What does this command do?

- A. It downloads the latest configuration from the specified FortiGate and performs a reload operation on the device database.
- B. It installs the latest configuration on the specified FortiGate and update the revision history database.
- C. It compares and provides differences in configuration on FortiManager with the current running configuration of the specified FortiGate.
- D. It installs the provisioning template configuration on the specified FortiGate.

Answer: A

Explanation:

Reference:

<https://community.fortinet.com/t5/FortiManager/Technical-Note-Retrieve-configuration-file-using-CLI-from-a/t>

NEW QUESTION 6

- (Exam Topic 1)

Refer to the exhibits. Exhibit one.

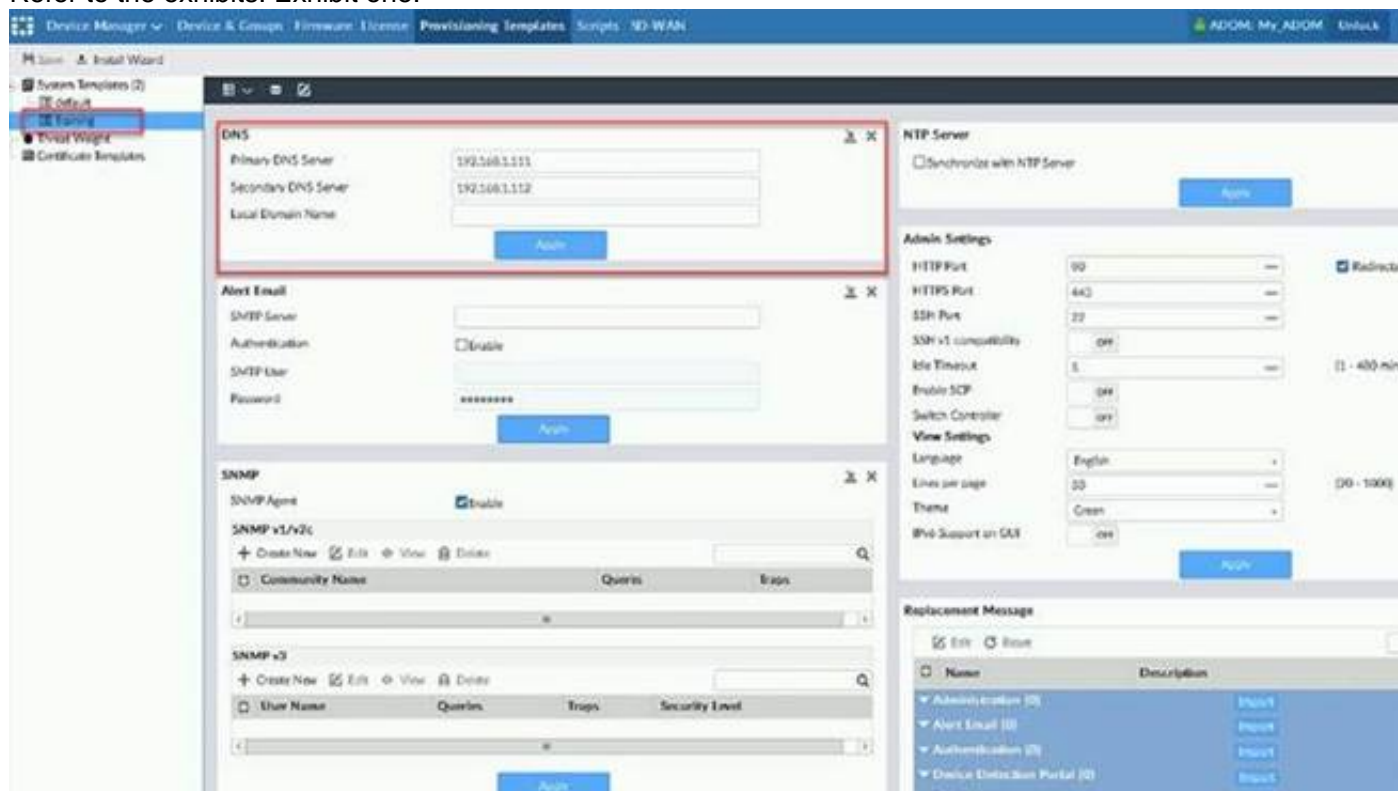
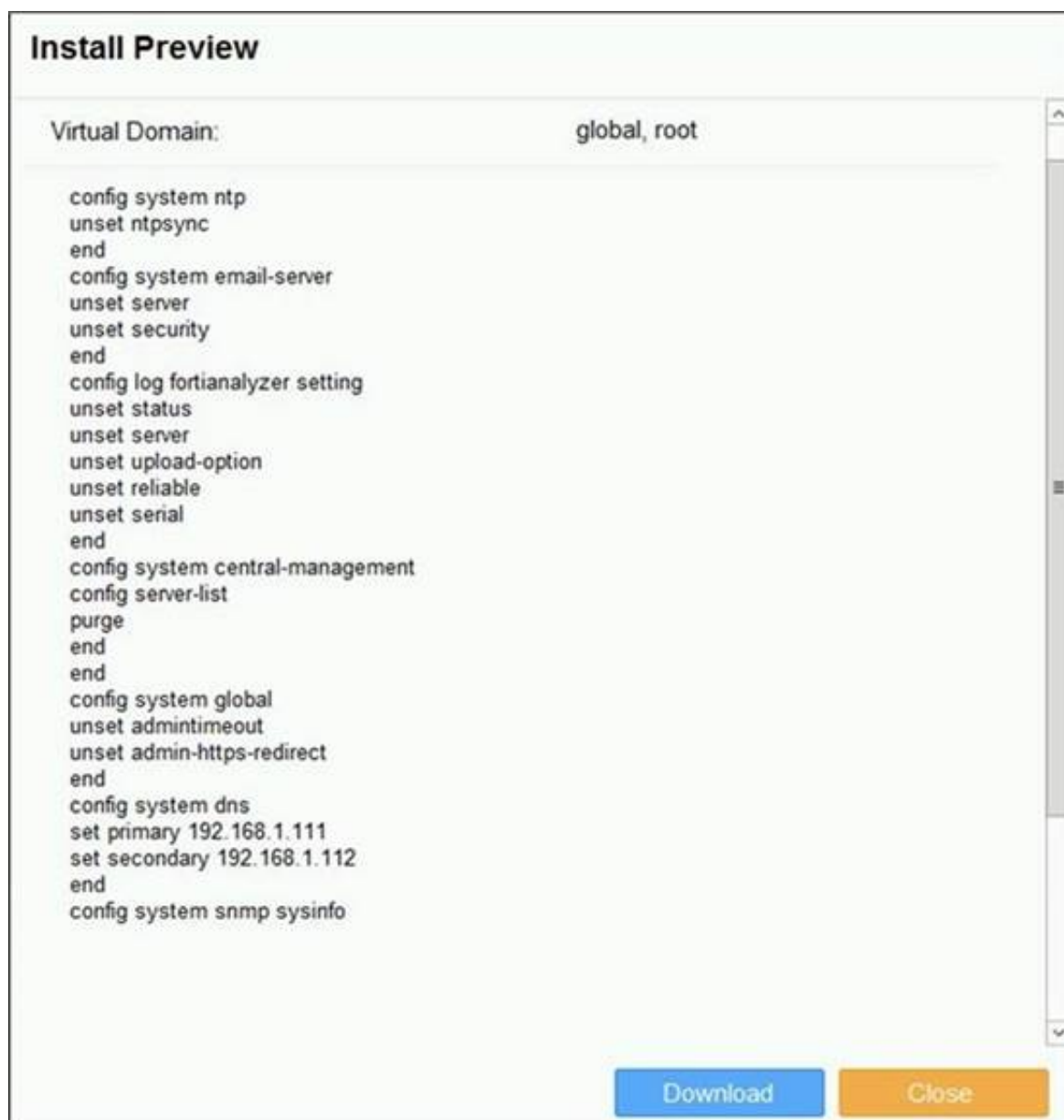


Exhibit two.



An administrator created a new system template named Training with two new DNS addresses on FortiManager. During the installation preview stage, the administrator notices that many unset commands need to be pushed. What can be the main reason for these unset commands?

- A. The DNS addresses in the default system settings are the same as the Training system template
- B. The Training system template has other default settings
- C. The ADOM is locked by another administrator
- D. The Training system template does not have assigned devices

Answer: B

NEW QUESTION 7

- (Exam Topic 1)

Which two conditions trigger FortiManager to create a new revision history? (Choose two.)

- A. When configuration revision is reverted to previous revision in the revision history
- B. When FortiManager installs device-level changes to a managed device
- C. When FortiManager is auto-updated with configuration changes made directly on a managed device
- D. When changes to device-level database is made on FortiManager

Answer: BC

Explanation:

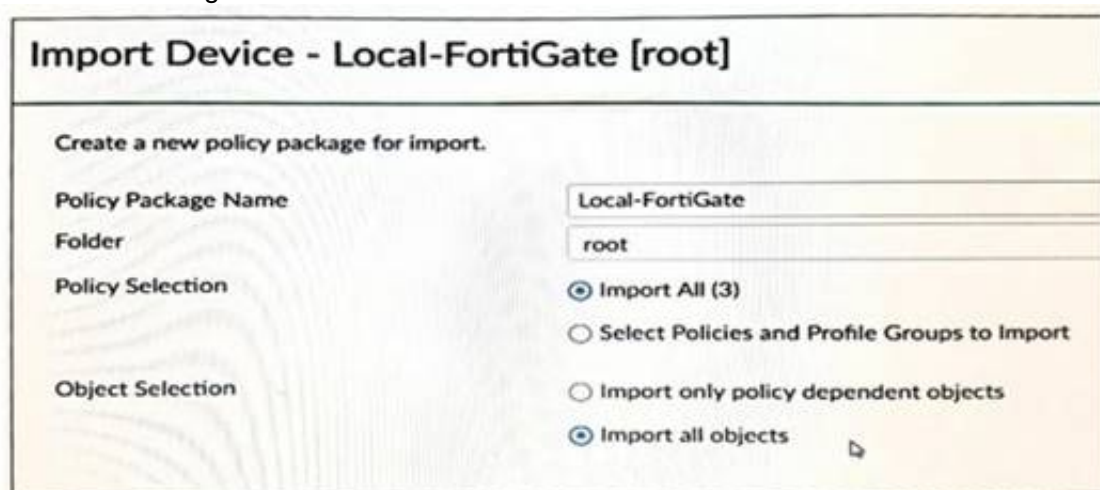
Reference:

https://help.fortinet.com/fmgr/50hlp/56/5-6-1/FortiManager_Admin_Guide/1000_Device%20Manager/1500_M

NEW QUESTION 8

- (Exam Topic 1)

View the following exhibit.



An administrator is importing a new device to FortiManager and has selected the shown options. What will happen if the administrator makes the changes and installs the modified policy package on this managed FortiGate?

- A. The unused objects that are not tied to the firewall policies will be installed on FortiGate
- B. The unused objects that are not tied to the firewall policies will remain as read-only locally on FortiGate
- C. The unused objects that are not tied to the firewall policies locally on FortiGate will be deleted
- D. The unused objects that are not tied to the firewall policies in policy package will be deleted from the FortiManager database

Answer: C

Explanation:

Reference:

<https://community.fortinet.com/t5/FortiManager/Import-all-objects-Versus-Import-only-policy-dependent-objec>

NEW QUESTION 9

- (Exam Topic 1)

View the following exhibit:

```
#diagnose fmupdate view-serverlist fds
Fortiguard Server Comm: Enabled
Server Override Mode: Loose
FDS server list :
```

| Index | Address | Port | TimeZone | Distance | Source |
|-------|-------------------|------|----------|----------|---------|
| *0 | 10.0.1.50 | 8890 | -5 | 0 | CLI |
| 1 | 96.45.33.89 | 443 | -5 | 0 | FDNI |
| 2 | 96.45.32.81 | 443 | -5 | 0 | FDNI |
| | | | | | |
| 38 | fds1.fortinet.com | 443 | -5 | 0 | DEFAULT |

How will FortiManager try to get updates for antivirus and IPS?

- A. From the list of configured override servers with ability to fall back to public FDN servers
- B. From the configured override server list only
- C. From the default server fds1.fortinet.com
- D. From public FDNI server with highest index number only

Answer: A

Explanation:

Reference:

<https://community.fortinet.com/t5/Fortinet-Forum/Clarification-of-FortiManager-s-quot-Server-Override-Mode>

NEW QUESTION 10

- (Exam Topic 1)

When an installation is performed from FortiManager, what is the recovery logic used between FortiManager and FortiGate for an FGFM tunnel?

- A. After 15 minutes, FortiGate will unset all CLI commands that were part of the installation that caused the tunnel to go down.
- B. FortiManager will revert and install a previous configuration revision on the managed FortiGate.
- C. FortiGate will reject the CLI commands that will cause the tunnel to go down.
- D. FortiManager will not push the CLI commands as a part of the installation that will cause the tunnel to go down.

Answer: A

Explanation:

The configuration change will break the fgfm connection, causing the FortiGate unit to attempt to reconnect for 900 seconds. If the FortiGate cannot reconnect, it will rollback to its previous configuration.

NEW QUESTION 10

- (Exam Topic 2)

Which two statements regarding device management on FortiManager are true? (Choose two.)

- A. FortiGate devices in HA cluster devices are counted as a single device.
- B. FortiGate in transparent mode configurations are not counted toward the device count on FortiManager.
- C. FortiGate devices in an HA cluster that has five VDOMs are counted as five separate devices.
- D. The maximum number of managed devices for each ADOM is 500.

Answer: AC

NEW QUESTION 15

- (Exam Topic 2)

An administrator has enabled Service Access on FortiManager.

What is the purpose of Service Access on the FortiManager interface?

- A. Allows FortiManager to download IPS packages
- B. Allows FortiManager to respond to request for FortiGuard services from FortiGate devices
- C. Allows FortiManager to run real-time debugs on the managed devices
- D. Allows FortiManager to automatically configure a default route

Answer: B

Explanation:
FortiManager 6.2 Study guide page 350

NEW QUESTION 20
- (Exam Topic 2)
Which two items are included in the FortiManager backup? (Choose two.)

- A. FortiGuard database
- B. Global database
- C. Logs
- D. All devices

Answer: BD

Explanation:
Reference: <https://kb.fortinet.com/kb/viewContent.do?externalId=FD34549>

NEW QUESTION 23
- (Exam Topic 2)
Refer to the exhibit.

Edit Address

Address Name

LAN

Type

IP/Netmask

IP/Netmask

192.168.1.0/255.255.255.0

Interface

any

Static Route Configuration

OFF

Comments

Add to Groups

Click to add ...

Advanced Options >

Per-Device Mapping

ON

+ Add

Edit

Delete

| | Name | VDOM | Details |
|--------------------------|------------------|------|-------------------------------------|
| <input type="checkbox"/> | Remote-FortiGate | root | IP/Netmask:10.200.1.0/255.255.255.0 |

An administrator has created a firewall address object, Training which is used in the Local-FortiGate policy package.
When the installation operation is performed, which IP/Netmask will be installed on the Local-FortiGate, for the Training firewall address object?

- A. 192.168.0.1/24
- B. 10.200.1.0/24
- C. It will create a firewall address group on Local-FortiGate with 192.168.0.1/24 and 10.0.1.0/24 object values.
- D. Local-FortiGate will automatically choose an IP/Netmask based on its network interface settings.

Answer: A

NEW QUESTION 26
- (Exam Topic 2)
Refer to the exhibit.

Create New CLI Script

Script Name

Routing

[View Sample Script]

Comments

Write a comment

0/255

Type

CLI Script

Run script on

Device Database

Script details

```

config router prefix-list
edit public
config rule
edit 1
set prefix 0.0.0.0/0
set action permit
next
edit 2
set prefix 8.8.8.8/32
set action deny
end

```

Advanced Device Filters

OK

Cancel

Which two statements are true if the script is executed using the Device Database option? (Choose two.)

- A. You must install these changes using the Install Wizard to a managed device
- B. The successful execution of a script on the Device Database will create a new revision history
- C. The script history will show successful installation of the script on the remote FortiGate
- D. The Device Settings Status will be tagged as Modified

Answer: AD

NEW QUESTION 28

- (Exam Topic 2)

An administrator has assigned a global policy package to custom ADOM1. Then the administrator creates a new policy package, Fortinet, in the custom ADOM1. Which statement about the global policy package assignment to the newly-created policy package Fortinet is true?

- A. When a new policy package is created, it automatically assigns the global policies to the new package.
- B. When a new policy package is created, you need to assign the global policy package from the global ADOM.
- C. When a new policy package is created, you need to reapply the global policy package to the ADOM.
- D. When a new policy package is created, you can select the option to assign the global policies to the new package.

Answer: A

Explanation:

Global Policy Package is applied at the ADOM level and you have the option to choose which ADOM policy packages you want to exclude (there is no option to choose Policy Packages to include).

NEW QUESTION 29

- (Exam Topic 3)

Which of the following statements are true regarding VPN Gateway configuration in VPN Manager? (Choose two.)

- A. Managed gateways are devices managed by FortiManager in the same ADOM
- B. External gateways are third-party VPN gateway devices only
- C. Protected subnets are the subnets behind the device that you don't want to allow access to over the IPsec VPN
- D. Managed devices in other ADOMs must be treated as external gateways

Answer: AD

Explanation:

Reference: http://help.fortinet.com/fmgr/50hlp/56/5-6-1/FMG-FAZ/1300_VPN_Manager/0800_IPsec_VPN_Gateway/0400_Create_mngd_gateway.htm

NEW QUESTION 31

- (Exam Topic 3)

Which of the following statements are true regarding schedule backup of FortiManager? (Choose two.)

- A. Backs up all devices and the FortiGuard database.
- B. Does not back up firmware images saved on FortiManager
- C. Supports FTP, SCP, and SFTP
- D. Can be configured from the CLI and GUI

Answer: BC

NEW QUESTION 32

- (Exam Topic 3)

View the following exhibit.

Edit Address

Address Name
Training

Type
IP/Netmask

IP/Network
192.168.1.0/255.255.255.0

Interface
any

Static Route Configuration
OFF

Comments
0/255

Add to Groups
Click to add

Advanced Options >

Per-Device Mapping
ON

+ Add Edit Delete

| Name | VDOM | Details |
|-----------------|------|---------------------------------|
| Local-FortiGate | root | IP/Netmask10.0.10/255.255.255.0 |

An administrator has created a firewall address object, Training, which is used in the Local-FortiGate policy package. When the install operation is performed, which IP Netmask will be installed on the Local-FortiGate, for the Training firewall address object?

- A. 10.0.1.0/24
- B. It will create firewall address group on Local-FortiGate with 192.168.0.1/24 and 10.0.1.0/24 object values
- C. 192.168.0.1/24
- D. Local-FortiGate will automatically choose an IP Network based on its network interface settings.

Answer: A

NEW QUESTION 36

- (Exam Topic 3)

An administrator would like to authorize a newly-installed AP using AP Manager. What steps does the administrator need to perform to authorize an AP?

- A. Authorize the new AP using AP Manager and wait until the change is updated on the FortiA
- B. Changes to the AP's state do not require installation.
- C. Changes to the AP's state must be performed directly on the managed FortiGate.
- D. Authorize the new AP using AP Manager and install the policy package changes on the managed FortiGate.
- E. Authorize the new AP using AP Manager and install the device level settings on the managed FortiGate.

Answer: D

NEW QUESTION 41

- (Exam Topic 3)

What will happen if FortiAnalyzer features are enabled on FortiManager?

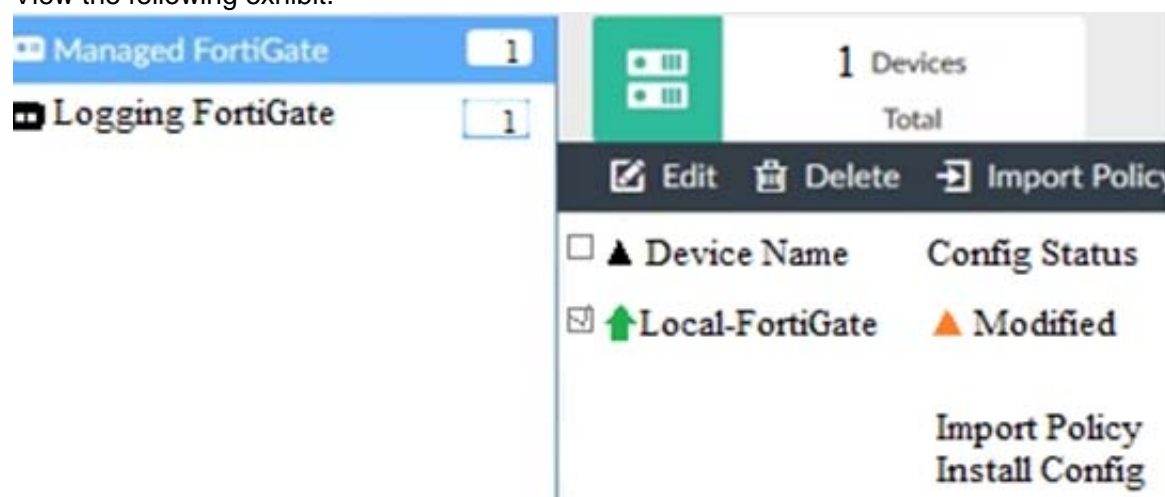
- A. FortiManager will keep all the logs and reports on the FortiManager.
- B. FortiManager will enable ADOMs to collect logs automatically from non-FortiGate devices.
- C. FortiManager will install the logging configuration to the managed devices
- D. FortiManager can be used only as a logging device.

Answer: C

NEW QUESTION 46

- (Exam Topic 3)

View the following exhibit.



When using Install Config option to install configuration changes to managed FortiGate, which of the following statements are true? (Choose two.)

- A. Once initiated, the install process cannot be canceled and changes will be installed on the managed device

- B. Will not create new revision in the revision history
- C. Installs device-level changes to FortiGate without launching the Install Wizard
- D. Provides the option to preview configuration changes prior to installing them

Answer: AC

NEW QUESTION 48

- (Exam Topic 3)

What does a policy package status of Modified indicate?

- A. FortiManager is unable to determine the policy package status
- B. The policy package was never imported after a device was registered on FortiManager
- C. The Policy configuration has been changed on a managed device and changes have not yet been imported into FortiManager
- D. The Policy package configuration has been changed on FortiManager and changes have not yet been installed on the managed device.

Answer: D

Explanation:

Reference: http://help.fortinet.com/fmgr/50hlp/56/5-6-1/FortiManager_Admin_Guide/1200_Policy%20and%20Objects/0800_Managing%20policy%20packages/2200_Policy%20Packag

NEW QUESTION 49

.....

THANKS FOR TRYING THE DEMO OF OUR PRODUCT

Visit Our Site to Purchase the Full Set of Actual NSE5_FMG-7.2 Exam Questions With Answers.

We Also Provide Practice Exam Software That Simulates Real Exam Environment And Has Many Self-Assessment Features. Order the NSE5_FMG-7.2 Product From:

https://www.2passeasy.com/dumps/NSE5_FMG-7.2/

Money Back Guarantee

NSE5_FMG-7.2 Practice Exam Features:

- * NSE5_FMG-7.2 Questions and Answers Updated Frequently
- * NSE5_FMG-7.2 Practice Questions Verified by Expert Senior Certified Staff
- * NSE5_FMG-7.2 Most Realistic Questions that Guarantee you a Pass on Your FirstTry
- * NSE5_FMG-7.2 Practice Test Questions in Multiple Choice Formats and Updatesfor 1 Year