

Exam Questions MS-102

Microsoft 365 Administrator Exam

<https://www.2passeasy.com/dumps/MS-102/>



NEW QUESTION 1

- (Exam Topic 1)

You need to meet the Intune requirements for the Windows 10 devices.

What should you do? To answer, select the appropriate options in the answer area.

NOTE: Each correct selection is worth one point.

Settings to configure in Azure AD:

▼
Device settings
Mobility (MDM and MAM)
Organizational relationships
User settings

Settings to configure in Intune:

▼
Device compliance
Device configuration
Device enrollment
Mobile Device Management Authority

- A. Mastered
- B. Not Mastered

Answer: A

Explanation:

References:

<https://docs.microsoft.com/en-us/intune/windows-enroll>

NEW QUESTION 2

- (Exam Topic 1)

You need to ensure that User1 can enroll the devices to meet the technical requirements. What should you do?

- A. From the Azure Active Directory admin center, assign User1 the Cloud device administrator role.
- B. From the Azure Active Directory admin center, configure the Maximum number of devices per user setting.
- C. From the Intune admin center, add User1 as a device enrollment manager.
- D. From the Intune admin center, configure the Enrollment restrictions.

Answer: C

Explanation:

References:

<https://docs.microsoft.com/en-us/sccm/mdm/deploy-use/enroll-devices-with-device-enrollment-manager>

NEW QUESTION 3

- (Exam Topic 1)

Note: This question is part of a series of questions that present the same scenario. Each question in the series contains a unique solution that might meet the stated goals. Some question sets might have more than one correct solution, while others might not have a correct solution.

After you answer a question in this section, you will NOT be able to return to it. As a result, these questions will not appear in the review screen.

Your network contains an Active Directory domain named contoso.com that is synced to Microsoft Azure Active Directory (Azure AD).

You manage Windows 10 devices by using Microsoft System Center Configuration Manager (Current Branch).

You configure a pilot for co-management.

You add a new device named Device1 to the domain. You install the Configuration Manager client on Device1.

You need to ensure that you can manage Device1 by using Microsoft Intune and Configuration Manager. Solution: Define a Configuration Manager device collection as the pilot collection. Add Device1 to the collection.

Does this meet the goal?

- A. Yes
- B. NO

Answer: A

Explanation:

Device1 has the Configuration Manager client installed so you can manage Device1 by using Configuration Manager. To manage Device1 by using Microsoft Intune, the device has to be enrolled in Microsoft Intune. In the Co-management Pilot configuration, you configure a Configuration Manager Device Collection that determines which devices are auto-enrolled in Microsoft Intune. You need to add Device1 to the Device Collection so that it auto-enrolls in Microsoft Intune. You will then be able to manage Device1 using Microsoft Intune. Reference: <https://docs.microsoft.com/en-us/configmgr/comanage/how-to-enable>

NEW QUESTION 4

- (Exam Topic 1)

You need to meet the technical requirements and planned changes for Intune. What should you do? To answer, select the appropriate options in the answer area.

NOTE: Each correct selection is worth one point.

Answer Area

Settings to configure in Azure AD:

Device settings
Mobility (MDM and MAM)
Organizational relationships
User settings

Settings to configure in Intune:

Device compliance
Device configuration
Device enrollment
Mobile Device Management Authority

- A. Mastered
- B. Not Mastered

Answer: A

Explanation:

Reference:

<https://docs.microsoft.com/en-us/intune/windows-enroll>

NEW QUESTION 5

- (Exam Topic 1)

You need to ensure that the support technicians can meet the technical requirement for the Montreal office mobile devices. What is the minimum of dedicated support technicians required?

- A. 1
- B. 4
- C. 7
- D. 31

Answer: B

Explanation:

References:

<https://docs.microsoft.com/en-us/sccm/mdm/deploy-use/enroll-devices-with-device-enrollment-manager>

NEW QUESTION 6

- (Exam Topic 1)

You need to create the Microsoft Store for Business. Which user can create the store?

- A. User2
- B. User3
- C. User4
- D. User5

Answer: C

Explanation:

References:

<https://docs.microsoft.com/en-us/microsoft-store/roles-and-permissions-microsoft-store-for-business>

NEW QUESTION 7

- (Exam Topic 1)

You need to meet the compliance requirements for the Windows 10 devices. What should you create from the Intune admin center?

- A. a device compliance policy
- B. a device configuration profile
- C. an application policy
- D. an app configuration policy

Answer: C

NEW QUESTION 8

- (Exam Topic 2)

You need to protect the U.S. PII data to meet the technical requirements. What should you create?

- A. a data loss prevention (DLP) policy that contains a domain exception
- B. a Security & Compliance retention policy that detects content containing sensitive data
- C. a Security & Compliance alert policy that contains an activity
- D. a data loss prevention (DLP) policy that contains a user override

Answer: A

NEW QUESTION 9

- (Exam Topic 2)

You need to recommend a solution for the security administrator. The solution must meet the technical requirements. What should you include in the recommendation?

- A. Microsoft Azure Active Directory (Azure AD) Privileged Identity Management
- B. Microsoft Azure Active Directory (Azure AD) Identity Protection
- C. Microsoft Azure Active Directory (Azure AD) conditional access policies
- D. Microsoft Azure Active Directory (Azure AD) authentication methods

Answer: B

Explanation:

References:

<https://docs.microsoft.com/en-us/azure/active-directory/conditional-access/concept-conditional-access-condition> states clearly that Sign-in risk

NEW QUESTION 10

- (Exam Topic 2)

You need to meet the technical requirement for large-volume document retrieval. What should you create?

- A. a data loss prevention (DLP) policy from the Security & Compliance admin center
- B. an alert policy from the Security & Compliance admin center
- C. a file policy from Microsoft Cloud App Security
- D. an activity policy from Microsoft Cloud App Security

Answer: D

Explanation:

References:

<https://docs.microsoft.com/en-us/office365/securitycompliance/activity-policies-and-alerts>

NEW QUESTION 10

- (Exam Topic 3)

You need to create the DLP policy to meet the technical requirements. What should you configure first?

- A. sensitive info types
- B. the Insider risk management settings
- C. the event types
- D. the sensitivity labels

Answer: A

Explanation:

Reference:

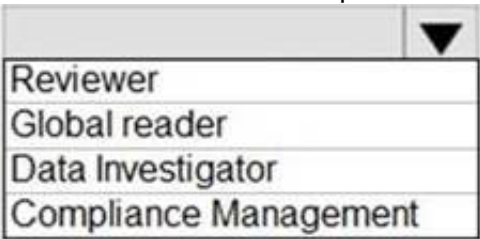
<https://docs.microsoft.com/en-us/microsoft-365/compliance/create-test-tune-dlp-policy?view=o365-worldwide>

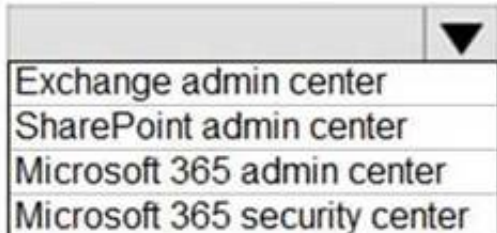
NEW QUESTION 12

- (Exam Topic 3)

You need to ensure that User2 can review the audit logs. The solutions must meet the technical requirements. To which role group should you add User2, and what should you use? To answer, select the appropriate options in the answer area.

NOTE: Each correct selection is worth one point.

Role group: 

Tool: 

- A. Mastered
- B. Not Mastered

Answer: A

Explanation:

Graphical user interface, text Description automatically generated

Reference:

<https://docs.microsoft.com/en-us/microsoft-365/compliance/search-the-audit-log-in-security-and-compliance?vi>

NEW QUESTION 13

- (Exam Topic 3)

You plan to implement the endpoint protection device configuration profiles to support the planned changes. You need to identify which devices will be supported, and how many profiles you should implement.

What should you identify? To answer, select the appropriate options in the answer area.

NOTE: Each correct selection is worth one point.

Supported devices:

Device1 only
Device1 and Device2 only
Device1 and Device3 only
Device1, Device2, and Device3
Device1, Device4, and Device5
Device1, Device2, Device3, Device4, and Device5

Number of required profiles:

1
2
3
4
5

- A. Mastered
- B. Not Mastered

Answer: A

Explanation:

Table Description automatically generated

Reference:

https://docs.microsoft.com/en-us/mem/intune/configuration/device-profile-create

NEW QUESTION 17

- (Exam Topic 5)

You have a Microsoft 365 E5 tenant that contains a Microsoft SharePoint Online site named Site1. Site1 contains the files shown in the following table.

Name	Number of IP addresses in the file
File1.docx	1
File2.txt	2
File3.xlsx	5

You create a sensitivity label named Sensitivity1 and an auto-label policy that has the following configurations:

- > Name: AutoLabel1
- > Label to auto-apply: Sensitivity1
- > Rules for SharePoint Online sites: Rule1-SPO
- > Choose locations where you want to apply the label: Site1 Rule1-SPO is configured as shown in the following exhibit.

Edit rule

Name *

Rule1-SPO

Description

Rule1 description

^ Conditions

We'll apply this policy to content that matches these conditions.

^ Content contains sensitive info types

Default All of these

Sensitive info types

IP Address Accuracy 85 to 100 Instance count 2 to Any

Add

Create group

+ Add condition

Save Cancel

For each of the following statements, select Yes if the statement is true. Otherwise, select No.

NOTE: Each correct selection is worth one point.

Statements	Yes	No
Sensitivity1 is applied to File1.docx.	<input type="radio"/>	<input type="radio"/>
Sensitivity1 is applied to File2.txt.	<input type="radio"/>	<input type="radio"/>
Sensitivity1 is applied to File3.xlsx.	<input type="radio"/>	<input type="radio"/>

- A. Mastered
B. Not Mastered

Answer: A

Explanation:

Graphical user interface, text, application Description automatically generated

Reference:

https://docs.microsoft.com/en-us/microsoft-365/compliance/apply-sensitivity-label-automatically?view=o365-w https://docs.microsoft.com/en-us/microsoft-365/compliance/sensitivity-labels?view=o365-worldwide

NEW QUESTION 20

- (Exam Topic 5)

You have a Microsoft 365 E5 tenant that contains the devices shown in the following table.

Name	Platform
Device1	Windows 10 Enterprise
Device2	iOS
Device3	Android
Device4	Windows 10 Pro

The devices are managed by using Microsoft Intune.

You plan to use a configuration profile to assign the Delivery Optimization settings. Which devices will support the settings?

- A. Device1 only
B. Device1 and Device4
C. Device1, Device3, and Device4
D. Device1, Device2, Device3, and Device4

Answer: A

NEW QUESTION 21

- (Exam Topic 5)

You have a Microsoft 365 E5 subscription that uses Microsoft Intune. The subscription contains the resources shown in the following table.

Name	Type	Member of
User1	User	Group1
Device1	Device	Group2

User1 is the owner of Device1.

You add Microsoft 365 Apps Windows 10 and later app types to Intune as shown in the following table. On Thursday, you review the results of the app deployments.

Name	Shows in Company Portal	Assignment	Microsoft Office app to install	Day of creation
App1	Yes	Group1 - Required	Word	Monday
App2	Yes	Group2 - Required	Excel	Tuesday
App3	Yes	Group1 - Available	PowerPoint	Wednesday

For each of the following statements, select Yes if the statement is true. Otherwise, select No. NOTE: Each correct selection is worth one point.

Answer Area

Statements	Yes	No
Word is installed on Device1.	<input checked="" type="radio"/>	<input type="radio"/>
App3 is displayed in the Company Portal.	<input type="radio"/>	<input type="radio"/>
Excel is installed on Device1.	<input type="radio"/>	<input type="radio"/>

- A. Mastered
B. Not Mastered

Answer: A

Explanation:

Answer Area

Statements	Yes	No
Word is installed on Device1.	<input checked="" type="radio"/>	<input type="radio"/>
App3 is displayed in the Company Portal.	<input type="radio"/>	<input type="radio"/>
Excel is installed on Device1.	<input type="radio"/>	<input type="radio"/>

NEW QUESTION 22

- (Exam Topic 5)

You have a Microsoft 365 tenant.

You plan to manage incidents in the tenant by using the Microsoft 365 security center.

Which Microsoft service source will appear on the Incidents page of the Microsoft 365 security center?

- A. Microsoft Defender for CloudUse the
- B. Microsoft Purview
- C. Azure Arc
- D. Microsoft Defender for Identity

Answer: D

Explanation:

Reference:

https://docs.microsoft.com/en-us/microsoft-365/security/defender/investigate-alerts?view=o365-worldwide

NEW QUESTION 26

- (Exam Topic 5)

You have a Microsoft 365 subscription.

You have the devices shown in the following table.

Name	TPM version	Operating system	BIOS/UEFI	BitLocker Drive Encryption (BitLocker)
Device1	TPM 1.2	Windows 10 Pro	BIOS	Enabled
Device2	TPM 2	Windows 10 Home	BIOS	Not applicable
Device3	TPM 2	Windows 8.1 Pro	UEFI	Enabled

You plan to join the devices to Azure Active Directory (Azure AD)

What should you do on each device to support Azure AU join? To answer, drag the appropriate actions to the collect devices, Each action may be used once, more than once, of not at all. You may need to drag the split bar between panes or scroll to view content.

NOTE: Each correct selection is worth one point.

Actions

Disable BitLocker.

Disable TPM.

Switch to UEFI.

Upgrade to Windows 10 Enterprise.

Answer Area

Device1:

Action

Device2:

Action

Device3:

Action

- A. Mastered
- B. Not Mastered

Answer: A

Explanation:

Actions

Disable BitLocker.

Disable TPM.

Switch to UEFI.

Upgrade to Windows 10 Enterprise.

Answer Area

Device1:

Disable BitLocker.

Device2:

Switch to UEFI.

Device3:

Upgrade to Windows 10 Enterprise.

NEW QUESTION 31

- (Exam Topic 5)

Note: This question is part of a series of questions that present the same scenario. Each question in the series contains a unique solution that might meet the stated goals. Some question sets might have more than one correct solution, while others might not have a correct solution.

After you answer a question in this section, you will NOT be able to return to it. As a result, these questions will not appear in the review screen.

Your network contains an Active Directory domain. You deploy an Azure AD tenant.

Another administrator configures the domain to synchronize to Azure AD.

You discover that 10 user accounts in an organizational unit (OU) are NOT synchronized to Azure AD. All the other user accounts synchronized successfully. You review Azure AD Connect Health and discover that all the user account synchronizations completed successfully. You need to ensure that the 10 user accounts are synchronized to Azure AD. Solution: From the Synchronization Rules Editor, you create a new outbound synchronization rule. Does this meet the goal?

- A. Yes
- B. No

Answer: B

Explanation:

The question states that “all the user account synchronizations completed successfully”. Therefore, the synchronization rule is configured correctly. It is likely that the 10 user accounts are being excluded from the synchronization cycle by a filtering rule.

Reference:

<https://docs.microsoft.com/en-us/azure/active-directory/hybrid/how-to-connect-sync-configure-filtering>

NEW QUESTION 32

- (Exam Topic 5)

You have a Microsoft 365 E5 subscription.

You create an account for a new security administrator named SecAdmin1.

You need to ensure that SecAdmin1 can manage Microsoft Defender for Office 365 settings and policies for Microsoft Teams, SharePoint and OneDrive.

Solution: From the Azure Active Directory admin center, you assign SecAdmin1 the Teams Administrator role.

Does this meet the goal?

- A. Yes
- B. no

Answer: B

NEW QUESTION 37

- (Exam Topic 5)

Your company has a Microsoft E5 tenant.

The company must meet the requirements of the ISO/IEC 27001:2013 standard. You need to assess the company's current state of compliance.

What should you use?

- A. eDiscovery
- B. Information governance
- C. Compliance Manager
- D. Data Subject Requests (DSRs)

Answer: C

Explanation:

Reference:

<https://docs.microsoft.com/en-us/compliance/regulatory/offering-iso-27001>

NEW QUESTION 42

- (Exam Topic 5)

HOTSPOT

You have a Microsoft 365 E3 subscription.

You plan to launch Attack simulation training for all users.

Which social engineering technique and training experience will be available? To answer, select the appropriate options in the answer area.

NOTE: Each correct selection is worth one point.

Answer Area

Social engineering technique:

Credential harvest
Link to malware
Malware attachment

Training experience:

Identity Theft
Mass Market Phishing
Web Phishing

- A. Mastered
- B. Not Mastered

Answer: A

Explanation:

Box 1: Credential Harvest

Attack simulation training offers a subset of capabilities to E3 customers as a trial. The trial offering contains the ability to use a Credential Harvest payload and the ability to select 'ISA Phishing' or 'Mass Market Phishing' training experiences. No other capabilities are part of the E3 trial offering.

Note: In Attack simulation training, multiple types of social engineering techniques are available: Credential Harvest
Malware Attachment Link to Malware Etc.
Box 2: Mass Market Phishing Reference:
https://learn.microsoft.com/en-us/microsoft-365/security/office-365-security/attack-simulation-training-get-start

NEW QUESTION 43

- (Exam Topic 5)

HOTSPOT

You have a Microsoft 365 subscription.

A user named user1@contoso.com was recently provisioned.

You need to use PowerShell to assign a Microsoft Office 365 E3 license to User1. Microsoft Bookings must NOT be enabled.

How should you complete the command? To answer, select the appropriate options in the answer area.

NOTE: Each correct selection is worth one point.

Answer Area

The screenshot shows a PowerShell command completion interface. The command is: `Set-MgUserLicense -UserId User1@contoso.com -AddLicenses $LicenseOptions -RemoveLicenses @()`. The `$LicenseOptions` variable is expanded, showing a list of license options. The options are: `Get-AzureADUser`, `Get-MgSubscribedSku`, and `Get-MSOLAccountSKU`. The `Get-MgSubscribedSku` option is selected. The `-RemoveLicenses @()` part of the command is also visible, with a dropdown menu showing `Set-AzureADUser`, `Set-MgUserLicense`, and `Set-MSOLUser`.

- A. Mastered
- B. Not Mastered

Answer: A

Explanation:

Box 1: Connect-MgGraph

Assign Microsoft 365 licenses to user accounts with PowerShell Use the Microsoft Graph PowerShell SDK

First, connect to your Microsoft 365 tenant.

Assigning and removing licenses for a user requires the User.ReadWrite.All permission scope or one of the other permissions listed in the 'Assign license' Microsoft Graph API reference page.

The Organization.Read.All permission scope is required to read the licenses available in the tenant. Connect-MgGraph -Scopes User.ReadWrite.All, Organization.Read.All

Box 2: Get-MgSubscribedSku

Run the Get-MgSubscribedSku command to view the available licensing plans and the number of available licenses in each plan in your organization. The number of available licenses in each plan is ActiveUnits - WarningUnits - ConsumedUnits.

Box 3: Set-MgUserLicense

Assigning licenses to user accounts

To assign a license to a user, use the following command in PowerShell.

Set-MgUserLicense -UserId \$userUPN -AddLicenses @{Skuld = "<Skuld>"} -RemoveLicenses @() This example assigns a license from the SPE_E5 (Microsoft 365 E5) licensing plan to the unlicensed user

belindan@litwareinc.com:

\$e5Sku = Get-MgSubscribedSku -All | Where SkuPartNumber -eq 'SPE_E5'

Set-MgUserLicense -UserId "belindan@litwareinc.com" -AddLicenses @{Skuld = \$e5Sku.Skuld}

-RemoveLicenses @()

Reference:

https://learn.microsoft.com/en-us/microsoft-365/enterprise/assign-licenses-to-user-accounts-with-microsoft-365

NEW QUESTION 48

- (Exam Topic 5)

HOTSPOT

Your network contains an on-premises Active Directory domain and a Microsoft 365 subscription. The domain contains the users shown in the following table.

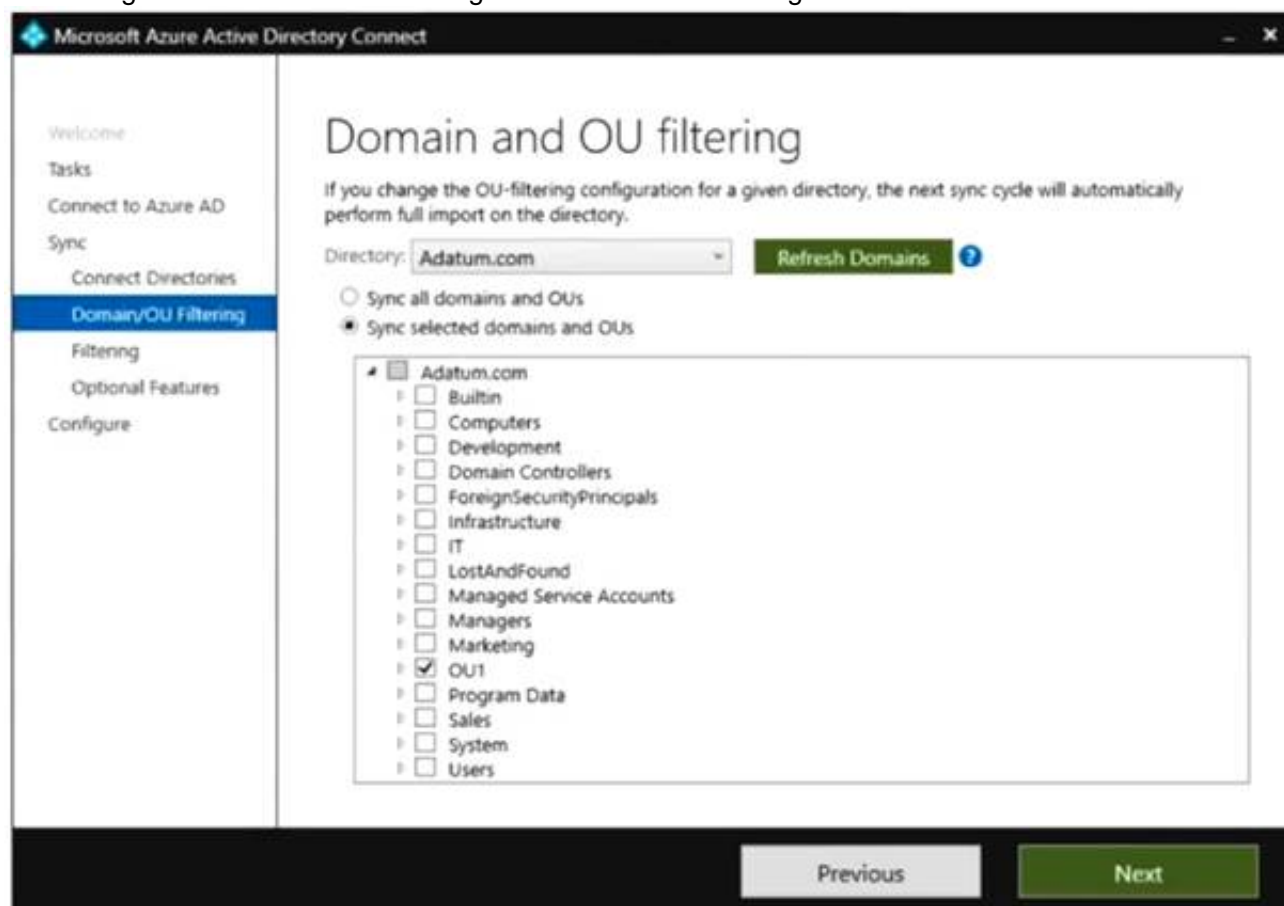
Name	Member of	In organizational unit (OU)
User1	Group1	OU1
User2	Group2	OU1

The domain contains the groups shown in the following table.

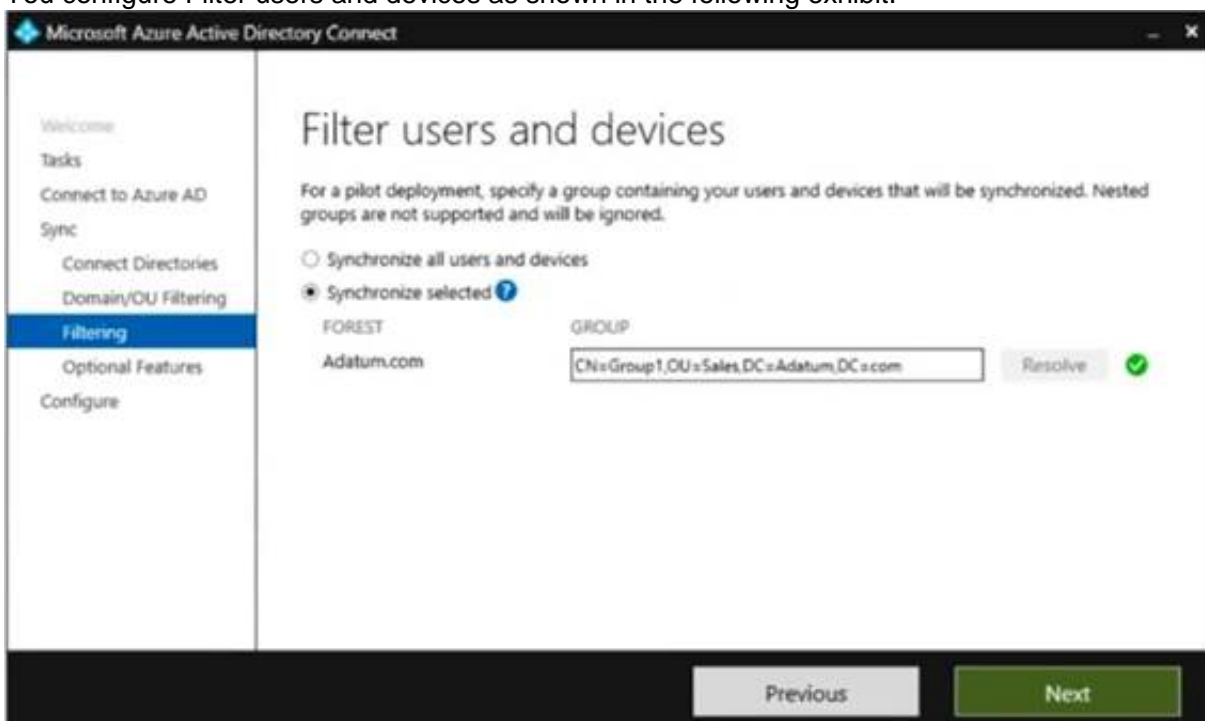
Name	Member of	In OU
Group1	None	Sales
Group2	Group1	OU1

You are deploying Azure AD Connect.

You configure Domain and OU filtering as shown in the following exhibit.



You configure Filter users and devices as shown in the following exhibit.



For each of the following statements, select Yes if the statement is true. Otherwise, select No.
 NOTE: Each correct selection is worth one point.

Answer Area

Statements	Yes	No
User1 syncs to Azure AD.	<input checked="" type="radio"/>	<input type="radio"/>
User2 syncs to Azure AD.	<input type="radio"/>	<input type="radio"/>
Group2 syncs to Azure AD.	<input type="radio"/>	<input type="radio"/>

- A. Mastered
 B. Not Mastered

Answer: A

Explanation:

Answer Area

Statements	Yes	No
User1 syncs to Azure AD.	<input checked="" type="checkbox"/>	<input type="checkbox"/>
User2 syncs to Azure AD.	<input type="checkbox"/>	<input checked="" type="checkbox"/>
Group2 syncs to Azure AD.	<input type="checkbox"/>	<input checked="" type="checkbox"/>

NEW QUESTION 53

- (Exam Topic 5)

You have a Microsoft 365 subscription that contains three groups named All users, Sales team, and Office users, and two users shown in the following table.

Name	Member of
User1	All users, Sales team
User2	All users, Office users

In Microsoft Endpoint Manager, you have the Policies for Office apps settings shown in the following exhibit.

Home / Policy Management Notifications

Policy configurations

+ Create Copy Reorder priority Remove

Total policy configurations: 3

Name	Priority ↑	Recommendation status
Office Users Policy	0	
Sales Team Policy	1	
All users	2	

The policies use the settings shown in the following table.

Policy	Default Shared Folder Location	Default Office Theme
All users	https://sharepoint.contoso.com/addins_all_users	Colorful
Office Users Policy	https://sharepoint.contoso.com/addins_office_users	White
Sales Team Policy	https://sharepoint.contoso.com/addins_sales_team_users_	Dark Gray

What is the default share folder location for User1 and the default Office theme for User2? To answer, select the appropriate options in the answer area.
NOTE: Each correct selection is worth one point.

The default shared folder location for User1 is:

https://sharepoint.contoso.com/addins_all_users

https://sharepoint.contoso.com/addins_office_users

https://sharepoint.contoso.com/addins_sales_team_users_

The default Office theme for User 2 is:

Colorful

Dark Gray

White

- A. Mastered
- B. Not Mastered

Answer: A

Explanation:

Table Description automatically generated

Reference:

https://docs.microsoft.com/en-us/deployoffice/overview-office-cloud-policy-service

NEW QUESTION 55

- (Exam Topic 5)

You have a Microsoft 365 tenant that contains two users named User1 and User2. You create the alert policy shown in the following exhibit.

Policy1

Edit policy

Delete policy

Status

On

Description

Add a description

Severity

Medium

Edit

Category

Information governance

Conditions

Activity is FileModified

Aggregation

Aggregated

Threshold

5 activities

Edit

Window

60 minutes

Scope

All users

Email recipients

User1@M365x082103.onmicrosoft.com

Daily notification limit

25

Edit

User2 runs a script that modifies a file in a Microsoft SharePoint Online library once every four minutes and runs for a period of two hours. How many alerts will User1 receive?

- A. 2
- B. 5
- C. 10
- D. 25

Answer: D

NEW QUESTION 59

- (Exam Topic 5)

HOTSPOT

You have a Microsoft 365 E5 subscription.

From Azure AD Privileged Identity Management (PIM), you configure Role settings for the Global Administrator role as shown in the following exhibit.

Activation	
Setting	State
Activation maximum duration (hours)	8 hour(s)
On activation, require	Azure MFA
Require justification on activation	Yes
Require ticket information on activation	No
Require approval to activate	No
Approvers	None
Assignment	
Setting	State
Allow permanent eligible assignment	No
Expire eligible assignments after	3 month(s)
Allow permanent active assignment	No
Expire active assignments after	15 day(s)
Require Azure Multi-Factor Authentication on active assignment	Yes
Require justification on active assignment	Yes

Use the drop-down menus to select the answer choice that completes each statement based on the information presented in the graphic. NOTE: Each correct selection is worth one point.

Answer Area

A user that is assigned the Global Administrator role as active [answer choice].

▼

will lose the role after eight hours

can reactivate the role every eight hours

can reactivate the role every 15 days

will lose the role after 15 days

You can make the Global Administrator role available to activation requests [answer choice].

▼

for up to eight hours

for up to three months

for up to 15 days

until the requests are revoked manually

- A. Mastered
- B. Not Mastered

Answer: A

Explanation:

Box 1: will lose the role after eight hours

From exhibit: Activation, Activation maximum duration (hours): 8 hour(s) Box 2: for up to three months

We see from exhibit: Assignment, Expire eligible assignment after: 3 month(s)

NEW QUESTION 61

- (Exam Topic 5)

Your network contains an on-premises Active Directory domain named contoso.local. The domain contains five domain controllers.

Your company purchases Microsoft 365 and creates an Azure AD tenant named contoso.onmicrosoft.com. You plan to install Azure AD Connect on a member server and implement pass-through authentication. You need to prepare the environment for the planned implementation of pass-through authentication. Which three actions should you perform? Each correct answer presents part of the solution.

NOTE: Each correct selection is worth one point.

- A. From a domain controller install an Authentication Agent
- B. From the Microsoft Entra admin center, configure an authentication method.
- C. From Active Director,' Domains and Trusts add a UPN suffix
- D. Modify the email address attribute for each user account.
- E. From the Microsoft Entra admin center, add a custom domain name.
- F. Modify the User logon name for each user account.

Answer: ABE

Explanation:

Deploy Azure AD Pass-through Authentication Step 1: Check the prerequisites

Ensure that the following prerequisites are in place. In the Entra admin center

* 1. Create a cloud-only Hybrid Identity Administrator account or a Hybrid Identity administrator account on your Azure AD tenant. This way, you can manage the configuration of your tenant should your on-premises services fail or become unavailable.

(E) 2. Add one or more custom domain names to your Azure AD tenant. Your users can sign in with one of these domain names.

(A) In your on-premises environment

* 1. Identify a server running Windows Server 2016 or later to run Azure AD Connect. If not enabled already, enable TLS 1.2 on the server. Add the server to the same Active Directory forest as the users whose passwords you need to validate. It should be noted that installation of Pass-Through Authentication agent on Windows Server Core versions is not supported.

* 2. Install the latest version of Azure AD Connect on the server identified in the preceding step. If you already have Azure AD Connect running, ensure that the version is supported.

* 3. Identify one or more additional servers (running Windows Server 2016 or later, with TLS 1.2 enabled) where you can run standalone Authentication Agents. These additional servers are needed to ensure the high availability of requests to sign in. Add the servers to the same Active Directory forest as the users whose passwords you need to validate.

* 4. Etc.

(B) Step 2: Enable the feature

Enable Pass-through Authentication through Azure AD Connect.

If you're installing Azure AD Connect for the first time, choose the custom installation path. At the User

sign-in page, choose Pass-through Authentication as the Sign On method. On successful completion, a Pass-through Authentication Agent is installed on the same server as Azure AD Connect. In addition, the Pass-through Authentication feature is enabled on your tenant.

Incorrect:

Not C: From Active Directory Domains and Trusts, add a UPN suffix Not D. Modify the email address attribute for each user account.

Not F. Modify the User logon name for each user account. Reference:

<https://learn.microsoft.com/en-us/azure/active-directory/hybrid/connect/how-to-connect-pta-quick-start>

NEW QUESTION 62

- (Exam Topic 5)

You have an Azure subscription and an on-premises Active Directory domain. The domain contains 50 computers that run Windows 10.

You need to centrally monitor System log events from the computers.

What should you do? To answer, select the appropriate options in the answer area.

NOTE: Each correct selection is worth one point.

In Azure:

<input type="text"/>	▼
Add and configure the Diagnostics settings for the Azure Activity Log.	
Add and configure an Azure Log Analytics workspace.	
Add an Azure Storage account and Azure Cognitive Search	
Add an Azure Storage account and a file share.	

On the computers:

<input type="text"/>	▼
Create an event subscription.	
Modify the membership of the Event Log Readers group.	
Enroll in Microsoft Endpoint Manager.	
Install the Microsoft Monitoring Agent.	

- A. Mastered
 B. Not Mastered

Answer: A

Explanation:

Reference:

<https://docs.microsoft.com/en-us/azure/azure-monitor/learn/quick-collect-windows-computer>

NEW QUESTION 67

- (Exam Topic 5)

Note: This question is part of a series of questions that present the same scenario. Each question in the series contains a unique solution that might meet the stated goals. Some question sets might have more than one correct solution, while others might not have a correct solution.

After you answer a question in this section, you will NOT be able to return to it. As a result, these questions will not appear in the review screen.

You have a computer that runs Windows 10.

You need to verify which version of Windows 10 is installed.

Solution: From the Settings app, you select Update & Security to view the update history.

Does this meet the goal?

- A. Yes
 B. No

Answer: B

NEW QUESTION 70

- (Exam Topic 5)

You have three devices enrolled in Microsoft Endpoint Manager as shown in the following table.

Name	Platform	BitLocker Drive Encryption (BitLocker)	Member of
Device1	Windows 10	Disabled	Group3
Device2	Windows 10	Disabled	Group2, Group3
Device3	Windows 10	Disabled	Group2

The device compliance policies in Endpoint Manager are configured as shown in the following table.

Name	Platform	Require BitLocker	Assigned
Policy1	Windows 10 and later	Require	Yes
Policy2	Windows 10 and later	Not configured	Yes
Policy3	Windows 10 and later	Require	No

The device compliance policies have the assignments shown in the following table.

Name	Assigned to
Policy1	Group3
Policy2	Group2

For each of the following statements, select Yes if the statement is true. Otherwise, select No. NOTE: Each correct selection is worth one point.

Answer Area

Statements	Yes	No
Device1 is compliant.	<input type="radio"/>	<input type="radio"/>
Device2 is compliant.	<input type="radio"/>	<input type="radio"/>
Device3 is compliant.	<input type="radio"/>	<input type="radio"/>

- A. Mastered
 B. Not Mastered

Answer: A

Explanation:

Answer Area

Statements	Yes	No
Device1 is compliant.	<input type="radio"/>	<input checked="" type="radio"/>
Device2 is compliant.	<input type="radio"/>	<input checked="" type="radio"/>
Device3 is compliant.	<input checked="" type="radio"/>	<input type="radio"/>

NEW QUESTION 74

- (Exam Topic 5)

You have a Microsoft 365 E5 tenant that contains 500 Android devices enrolled in Microsoft Intune. You need to use Microsoft Endpoint Manager to deploy a managed Google Play app to the devices.

Which four actions should you perform in sequence? To answer, move the appropriate actions from the list of actions to the answer area and arrange them in the correct order.

Actions

Answer Area

Create an app configuration policy

Link the account to Intune

Create a Microsoft account

Configure a mobile device management (MDM) push certificate

Add the app

Create a Google account

Assign the app

- A. Mastered
B. Not Mastered

Answer: A

Explanation:

Graphical user interface, text, application Description automatically generated

Reference:

<https://docs.microsoft.com/en-us/mem/intune/apps/apps-add-android-for-work#assign-a-managed-google-play-a>

NEW QUESTION 79

- (Exam Topic 5)

You have several devices enrolled in Microsoft Endpoint Manager.

You have a Microsoft Azure Active Directory (Azure AD) tenant that includes the users shown in the following table.

Name	Member of
User1	Group1
User2	Group1, Group2
User3	None

The device type restrictions in Endpoint Manager are configured as shown in the following table.

Priority	Name	Allowed platform	Assigned to
1	Policy1	Android, iOS, Windows (MDM)	None
2	Policy2	Windows (MDM)	Group2
3	Policy3	Android, iOS	Group1
Default	All users	Android, Windows (MDM)	All users

Answer Area

Statements	Yes	No
User1 can enroll Windows devices in Endpoint Manager.	<input type="radio"/>	<input type="radio"/>
User2 can enroll Android devices in Endpoint Manager.	<input type="radio"/>	<input type="radio"/>
User3 can enroll iOS devices in Endpoint Manager.	<input type="radio"/>	<input type="radio"/>

- A. Mastered
B. Not Mastered

Answer: A

Explanation:

Answer Area

Statements	Yes	No
User1 can enroll Windows devices in Endpoint Manager.	<input type="radio"/>	<input checked="" type="radio"/>
User2 can enroll Android devices in Endpoint Manager.	<input type="radio"/>	<input checked="" type="radio"/>
User3 can enroll iOS devices in Endpoint Manager.	<input checked="" type="radio"/>	<input type="radio"/>

NEW QUESTION 83

- (Exam Topic 5)

You have a Microsoft 365 tenant.

You need to retain Azure Active Directory (Azure AD) audit logs for two years. Administrators must be able to query the audit log information by using the Azure Active Directory admin center.

What should you do? To answer, select the appropriate options in the answer area. NOTE: Each correct selection is worth one point.

Answer Area

Save the audit logs to:

Azure Active Directory admin center blade to use to view the saved audit logs:

- A. Mastered
- B. Not Mastered

Answer: A

Explanation:

Answer Area

Save the audit logs to:

Azure Active Directory admin center blade to use to view the saved audit logs:

NEW QUESTION 87

- (Exam Topic 5)

You have a Microsoft 365 subscription.

You have an Azure AD tenant that contains the users shown in the following table.

Name	Role
User1	Security Administrator
User2	Global Administrator
User3	Service Support Administrator

You configure Tenant properties as shown in the following exhibit.

Technical contact

Global privacy contact

Privacy statement URL

Which users will be contacted by Microsoft if the tenant experiences a data breach?

- A. Used only
- B. User2 only
- C. User3 only
- D. Used and User2 only
- E. User2 and User3 only

Answer: B

Explanation:

Microsoft 365 is committed to notifying customers within 72 hours of breach declaration. The customer's tenant administrator will be notified.

Reference:

<https://learn.microsoft.com/en-us/compliance/regulatory/gdpr-breach-office365>

NEW QUESTION 92

- (Exam Topic 5)

You enable the Azure AD Identity Protection weekly digest email. You create the users shown in the following table.

Name	Role
Admin1	Security reader
Admin2	User administrator
Admin3	Security administrator
Admin4	Compliance administrator

Which users will receive the weekly digest email automatically?

- A. Admin2, Admin3, and Admin4 only
- B. Admin1, Admin2, Admin3, and Admin4
- C. Admin2 and Admin3 only
- D. Admin3 only
- E. Admin1 and Admin3 only

Answer: E

Explanation:

By default, all Global Admins receive the email. Any newly created Global Admins, Security Readers or Security Administrators will automatically be added to the recipients list.

NEW QUESTION 96

- (Exam Topic 5)

You have a Microsoft 365 E5 subscription that contains 200 Android devices enrolled in Microsoft Intune. You create an Android app protection policy named Policy1 that is targeted to all Microsoft apps and assigned to all users.

Policy1 has the Data protection settings shown in the following exhibit.

Select apps to exempt Select

Save copies of org data i Allow Block

Allow user to save copies to selected services i SharePoint v

Transfer telecommunication data to i Any Dialer App v

Dialer App Package ID

Dialer App Name

Received data from other apps i All Apps v

Open data into Org documents i Allow Block

Allow users to open data from services i 3 selected v

Restrict cut, copy, and paste between other apps i Policy managed apps with paste in v

Cut and copy character limit for any app 0

Screen capture and Google Assistant i Allow Block

Approved keyboards i Require Not required

Select keyboards to approve Select

Use the drop-down menus to select the answer choice that completes each statement based on the information presented in the graphic.

Answer Area

A user can copy files from Microsoft OneDrive to [answer choice] only.

OneDrive
local storage
Microsoft SharePoint Online
Microsoft SharePoint Online and OneDrive

A user can copy and paste text from [answer choice] to Microsoft Word document stored in Microsoft OneDrive.

any app
only managed apps
only unmanaged apps

A. Mastered

B. Not Mastered

Answer: A

Explanation:

Answer Area

A user can copy files from Microsoft OneDrive to [answer choice] only.

OneDrive
 local storage
 Microsoft SharePoint Online
 Microsoft SharePoint Online and OneDrive

A user can copy and paste text from [answer choice] to Microsoft Word document stored in Microsoft OneDrive.

any app
 only managed apps
 only unmanaged apps

NEW QUESTION 100

- (Exam Topic 5)

You have a Microsoft 365 E5 tenant. Users store data in the following locations:

- > Microsoft Teams
- > Microsoft OneDrive
- > Microsoft Exchange Online
- > Microsoft SharePoint Online

You need to retain Microsoft 365 data for two years.

What is the minimum number of retention policies that you should create?

- A. 1
- B. 2
- C. 3
- D. 4

Answer: C

Explanation:

Reference:

<https://docs.microsoft.com/en-us/microsoft-365/compliance/create-retention-policies?view=o365-worldwide>

NEW QUESTION 104

- (Exam Topic 5)

HOTSPOT

You have a Microsoft 365 subscription.

You need to review metrics for the following: The daily active users in Microsoft Teams Recent Microsoft service issues

What should you use? To answer, select the appropriate options in the answer area. NOTE: Each correct selection is worth one point.

Answer Area

Teams daily active users:

Microsoft Secure Score
 Adoption Score
 Service health
 Usage reports

Recent Microsoft service issues:

Microsoft Secure Score
 Adoption Score
 Service health
 Usage reports

- A. Mastered
- B. Not Mastered

Answer: A

Explanation:

Box 1: Usage reports

The daily active users in Microsoft Teams

Microsoft 365 Reports in the admin center - Microsoft Teams usage activity

The brand-new Teams usage report gives you an overview of the usage activity in Teams, including the number of active users, channels and messages so you can quickly see how many users across your organization are using Teams to communicate and collaborate. It also includes other Teams specific activities, such as the number of active guests, meetings, and messages.

Box 2: Service Health

Recent Microsoft service issues

You can view the health of your Microsoft services, including Office on the web, Yammer, Microsoft Dynamics CRM, and mobile device management cloud

services, on the Service health page in the Microsoft 365 admin center. If you are experiencing problems with a cloud service, you can check the service health to determine whether this is a known issue with a resolution in progress before you call support or spend time troubleshooting.

Reference:

<https://learn.microsoft.com/en-us/microsoft-365/admin/activity-reports/microsoft-teams-usage-activity> <https://learn.microsoft.com/en-us/microsoft-365/enterprise/view-service-health>

NEW QUESTION 107

- (Exam Topic 5)

You implement Microsoft Azure Advanced Threat Protection (Azure ATP). You have an Azure ATP sensor configured as shown in the following exhibit.



How long after the Azure ATP cloud service is updated will the sensor update?

- A. 20 hours
- B. 12 hours
- C. 7 hours
- D. 48 hours

Answer: B

NEW QUESTION 108

- (Exam Topic 5)

You have a Microsoft 365 tenant that contains 100 Windows 10 devices. The devices are managed by using Microsoft Endpoint Manager.

You plan to create two attack surface reduction (ASR) policies named ASR1 and ASR2. ASR1 will be used to configure Microsoft Defender Application Guard.

ASR2 will be used to configure Microsoft Defender SmartScreen.

Which ASR profile type should you use for each policy? To answer, select the appropriate options in the answer area.

NOTE: Each correct selection is worth one point.

ASR1:

- Device control
- Exploit protection
- Application control
- App and browser isolation
- Attack surface reduction rules

ASR2:

- Device control
- Exploit protection
- Application control
- App and browser isolation
- Attack surface reduction rules

- A. Mastered
- B. Not Mastered

Answer: A

Explanation:

Graphical user interface, text, application, chat or text message Description automatically generated

Reference:

<https://docs.microsoft.com/en-us/mem/intune/protect/endpoint-security-asr-policy>

NEW QUESTION 109

- (Exam Topic 5)

You have a Microsoft 365 E5 subscription.

You plan to implement Microsoft 365 compliance policies to meet the following requirements:

- > Identify documents that are stored in Microsoft Teams and SharePoint Online that contain Personally Identifiable Information (PII).
- > Report on shared documents that contain PII. What should you create?

- A. an alert policy
- B. a data loss prevention (DLP) policy
- C. a retention policy
- D. a Microsoft Cloud App Security policy

Answer: B

Explanation:

Reference:

https://docs.microsoft.com/en-us/microsoft-365/compliance/dlp-learn-about-dlp?view=o365-worldwide

NEW QUESTION 110

- (Exam Topic 5)

You have a Microsoft 365 subscription.

You create a retention label named Retention1 as shown in the following exhibit.

Create retention label

Review and finish

Name
Name
Retention1
[Edit](#)

Retention settings

Retention period
6 months
[Edit](#)

Retention action
Retain and Delete
[Edit](#)

Based on
Based on when it was created
[Edit](#)

You apply Retention1 to all the Microsoft OneDrive content.

On January 1, 2020, a user stores a file named File1 in OneDrive. On January 10, 2020, the user modifies File1.

On February 1, 2020, the user deletes File1.

When will File1 be removed permanently and unrecoverable from OneDrive?

- A. February 1, 2020
- B. July 1, 2020
- C. July 10, 2020
- D. August 1, 2020

Answer: B

NEW QUESTION 115

- (Exam Topic 5)

You have three devices enrolled in Microsoft Endpoint Manager as shown in the following table.

Name	Platform	BitLocker Drive Encryption (BitLocker)	Member of
Device1	Windows 10	Disabled	Group1, Group2
Device2	Windows 10	Disabled	Group2, Group3
Device3	Windows 10	Disabled	Group3

The device compliance policies in Endpoint Manager are configured as shown in the following table.

Name	Require BitLocker	Mark noncompliant after (days)	Assigned
Policy1	Require	5	No
Policy2	Require	10	Yes
Policy3	Not configured	15	Yes

The device compliance policies have the assignments shown in the following table.

Name	Assigned to
Policy2	Group2
Policy3	Group3

For each of the following statements, select Yes if the statement is true. Otherwise, select No. NOTE: Each correct selection is worth one point.

Answer Area

Statements	Yes	No
Device1 is marked as noncompliant after 10 days.	<input type="radio"/>	<input type="radio"/>
Device2 is marked as noncompliant after 10 days.	<input type="radio"/>	<input type="radio"/>
Device3 is marked as noncompliant after 15 days.	<input type="radio"/>	<input type="radio"/>

- A. Mastered
- B. Not Mastered

Answer: A

Explanation:

Graphical user interface, text, application Description automatically generated

NEW QUESTION 117

- (Exam Topic 5)

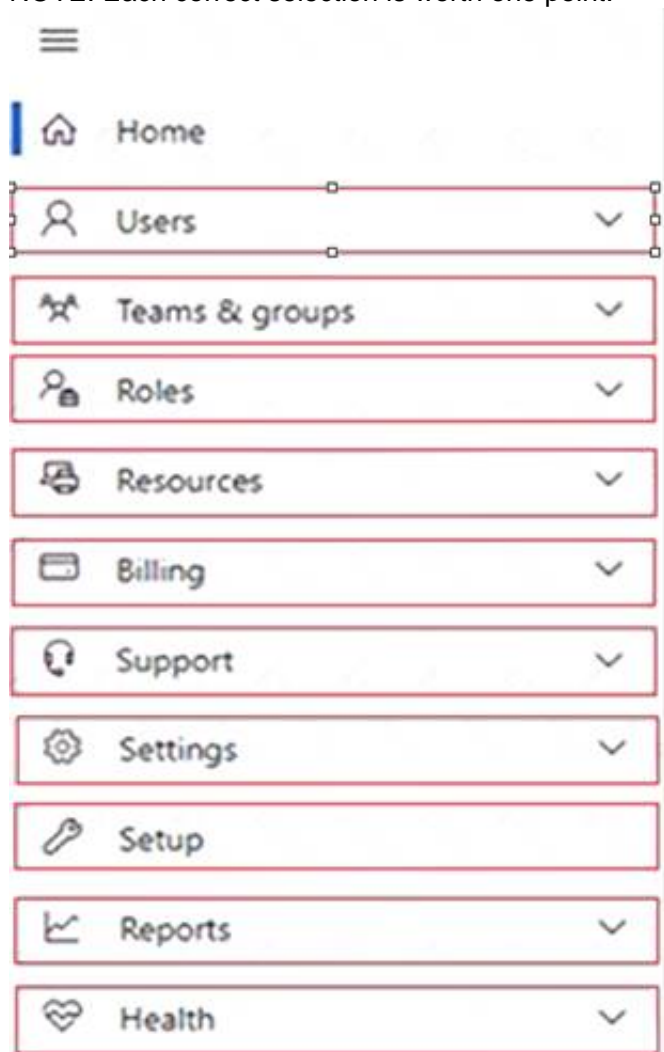
HOTSPOT

Your company has a Microsoft 365 E5 subscription. You need to perform the following tasks:

View the Adoption Score of the company. Create a new service request to Microsoft.

Which two options should you use in the Microsoft 365 admin center? To answer, select the appropriate options in the answer area.

NOTE: Each correct selection is worth one point.



- A. Mastered
- B. Not Mastered

Answer: A

Explanation:

Box 1: Reports

View the Adoption Score of the company. How to enable Adoption Score

To enable Adoption Score:

- > Sign in to the Microsoft 365 admin center as a Global Administrator and go to Reports > Adoption Score
- > Select enable Adoption Score. It can take up to 24 hours for insights to become available.

Box 2: Support

Create a new service request to Microsoft.

Sign in to Microsoft 365 with your Microsoft 365 admin account, and select Support > New service request. If you're in the admin center, select Support > New service request.

Reference:

<https://learn.microsoft.com/en-us/microsoft-365/admin/adoption/adoption-score> <https://support.microsoft.com/en-us/topic/contact-microsoft-office-support-fd6bb40e-75b7-6f43-d6f9-c13d1085>

NEW QUESTION 119

- (Exam Topic 5)

You have a Microsoft 365 E5 tenant.

You configure a device compliance policy as shown in the following exhibit.

Compliance settings [Edit](#)

Microsoft Defender ATP

Require the device to be at or under the machine risk score. Low

Device Health

Rooted devices Block
Require the device to be at or under the Device Threat Level

System Security

Require a password to unlock mobile devices Require
Required password type Device default
Encryption of data storage on device Require
Block apps from unknown sources Block

Actions for noncompliance [Edit](#)

Action	Schedule
Mark device noncompliant	Immediately
Retire the noncompliant device	Immediately

Use the drop-down menus to select the answer choice that completes each statement based on the information presented in the graphic.
NOTE: Each correct selection is worth one point.

When a device reports a medium threat level, the device will

be locked remotely

display a notification

marked as compliant

marked as noncompliant

removed from the database

Rooted devices will be

allowed to access company resources

marked as compliant

prevented from accessing company resources

reported with a low device threat

- A. Mastered
B. Not Mastered

Answer: A

Explanation:

Graphical user interface, text, application, email Description automatically generated

Reference:

<https://docs.microsoft.com/en-us/mem/intune/protect/compliance-policy-create-android>

NEW QUESTION 124

- (Exam Topic 5)

Your network contains three Active Directory forests. There are forests trust relationships between the forests. You create an Azure AD tenant.

You plan to sync the on-premises Active Directory to Azure AD.

You need to recommend a synchronization solution. The solution must ensure that the synchronization can complete successfully and as quickly as possible if a single server fails.

What should you include in the recommendation?

- A. one Azure AD Connect sync server and one Azure AD Connect sync server in staging mode
B. three Azure AD Connect sync servers and one Azure AD Connect sync server in staging mode
C. six Azure AD Connect sync servers and three Azure AD Connect sync servers in staging mode
D. three Azure AD Connect sync servers and three Azure AD Connect sync servers in staging mode

Answer: A

Explanation:

Azure AD Connect can be active on only one server. You can install Azure AD Connect on another server for redundancy but the additional installation would need to be in Staging mode. An Azure AD connect installation in Staging mode is configured and ready to go but it needs to be manually switched to Active to perform directory synchronization.

Reference:

<https://docs.microsoft.com/en-us/azure/active-directory/hybrid/how-to-connect-install-custom>

NEW QUESTION 127

- (Exam Topic 5)

You have a Microsoft 365 tenant and a LinkedIn company page.

You plan to archive data from the LinkedIn page to Microsoft 365 by using the LinkedIn connector. Where can you store data from the LinkedIn connector?

- A. a Microsoft OneDrive for Business folder
- B. a Microsoft SharePoint Online document library
- C. a Microsoft 365 mailbox
- D. Azure Files

Answer: C

Explanation:

Reference:

<https://docs.microsoft.com/en-us/microsoft-365/compliance/archive-linkedin-data?view=o365-worldwide>

NEW QUESTION 128

- (Exam Topic 5)

You have an Azure Active Directory (Azure AD) tenant named contoso.com that contains the users shown in the following table.

Name	Member of
User1	Group1
User2	Group2
User3	Group1, Group2

You integrate Microsoft Intune and contoso.com as shown in the following exhibit.

The screenshot shows the 'Configure' page for Microsoft Intune. It includes sections for MDM (Mobile Device Management) and MAM (Mobile Application Management) settings. The MDM section has a 'MDM user scope' dropdown set to 'Some', a 'Groups' list containing 'Group1', and three URL fields for 'MDM terms of use URL', 'MDM discovery URL', and 'MDM compliance URL'. The MAM section has a 'MAM User scope' dropdown set to 'Some', a 'Groups' list containing 'Group2', and three URL fields for 'MAM Terms of use URL', 'MAM Discovery URL', and 'MAM Compliance URL'. There are also links to 'Restore default MDM URLs' and 'Restore default MAM URLs'.

You purchase a Windows 10 device named Device1.

For each of the following statements, select Yes if the statement is true. Otherwise, select No.

NOTE: Each correct selection is worth one point.

Statements	Yes	No
If User1 joins Device1 to contoso.com, Device1 is enrolled in Intune automatically.	<input type="radio"/>	<input type="radio"/>
If User2 joins Device1 to contoso.com, Device1 is enrolled in Intune automatically.	<input type="radio"/>	<input type="radio"/>
If User3 registers Device1 in contoso.com, Device1 is enrolled in Intune automatically.	<input type="radio"/>	<input type="radio"/>

- A. Mastered
- B. Not Mastered

Answer: A

Explanation:

Reference:

<https://docs.microsoft.com/en-us/mem/intune/enrollment/windows-enroll>

NEW QUESTION 129

- (Exam Topic 5)

You have a Microsoft 365 tenant that contains devices enrolled in Microsoft Intune. The devices are configured as shown in the following table.

Name	Platform
Device1	Windows 10
Device2	Android
Device3	iOS

You plan to perform the following device management tasks in Microsoft Endpoint Manager:

- > Deploy a VPN connection by using a VPN device configuration profile.
- > Configure security settings by using an Endpoint Protection device configuration profile. You support the management tasks.

What should you identify? To answer, select the appropriate options in the answer area.

NOTE: Each correct selection is worth one point.

VPN device configuration profile:

▼

Device1 only

Device1 and Device2 only

Device1 and Device3 only

Device1, Device2 and Device3

Endpoint Protection device configuration profile:

▼

Device1 only

Device1 and Device2 only

Device1 and Device3 only

Device1, Device2 and Device3

- A. Mastered
- B. Not Mastered

Answer: A

Explanation:

Graphical user interface, application Description automatically generated

Reference:

<https://docs.microsoft.com/en-us/mem/intune/configuration/vpn-settings-configure> <https://docs.microsoft.com/en-us/mem/intune/protect/endpoint-protection-macos>

NEW QUESTION 131

- (Exam Topic 5)

Note: This question is part of a series of questions that present the same scenario. Each question in the series contains a unique solution that might meet the stated goals. Some question sets might have more than one correct solution, while others might not have a correct solution.

After you answer a question in this section, you will NOT be able to return to it. As a result, these questions will not appear in the review screen.

You have a Microsoft 365 E5 subscription.

You create an account for a new security administrator named SecAdmin1.

You need to ensure that SecAdmin1 can manage Microsoft Defender for Office 365 settings and policies for Microsoft Teams, SharePoint, and OneDrive.

Solution: From the Microsoft Entra admin center, you assign SecAdmin1 the Security Administrator role.

Does this meet the goal?

- A. Yes
- B. No

Answer: A

Explanation:

You need to assign the Security Administrator role. Reference:

<https://docs.microsoft.com/en-us/microsoft-365/security/office-365-security/office-365-atp>

NEW QUESTION 136

- (Exam Topic 5)

You have a Microsoft 365 tenant that contains the compliance policies shown in the following table.

Name	Require BitLocker	Require the device to be at or under the machine risk score
Policy1	Required	High
Policy2	Not configured	Medium
Policy3	Required	Low

The tenant contains the devices shown in the following table.

Name	BitLocker Drive Encryption (BitLocker)	Microsoft Defender for Endpoint risk status	Policies applied
Device1	Configured	High	Policy1, Policy3
Device2	Not configured	Medium	Policy2, Policy3
Device3	Not configured	Low	Policy1, Policy2

For each of the following statements, select Yes if the statement is true. Otherwise, select No.

Statements	Yes	No
Device1 is marked as compliant.	<input type="radio"/>	<input type="radio"/>
Device2 is marked as compliant.	<input type="radio"/>	<input type="radio"/>
Device3 is marked as compliant.	<input type="radio"/>	<input type="radio"/>

- A. Mastered
B. Not Mastered

Answer: A

Explanation:

Graphical user interface, text, application Description automatically generated

NEW QUESTION 139

- (Exam Topic 5)

You have a Microsoft 365 E5 subscription that contains the users shown in the following table.

Name	Member of Microsoft 365 role group
Admin1	Content Explorer List viewer Content Explorer Content viewer
Admin2	Security Administrator Content Explorer List Viewer

You have labels in Microsoft 365 as shown in the following table.

Name	Type
Label1	Sensitivity
Label2	Retention

The content in Microsoft 365 is assigned labels as shown in the following table.

Name	Type	Label
File1	File in SharePoint Online	Label1
Mail1	Email message in Exchange Online	Label2

You have labels In Microsoft 365 as shown in the following table.

For each of the following statements, select Yes if the statement is true. Otherwise, select No.

Answer Area

Statements	Yes	No
Admin1 can view the contents of File1 by using Content explorer.	<input type="radio"/>	<input type="radio"/>
Admin2 can view the contents of File1 by using Content explorer.	<input type="radio"/>	<input type="radio"/>
Admin2 can use Content explorer to verify that Label2 is assigned to Mail1.	<input type="radio"/>	<input type="radio"/>

- A. Mastered
B. Not Mastered

Answer: A

Explanation:

Answer Area

Statements	Yes	No
Admin1 can view the contents of File1 by using Content explorer.	<input checked="" type="radio"/>	<input type="radio"/>
Admin2 can view the contents of File1 by using Content explorer.	<input type="radio"/>	<input checked="" type="radio"/>
Admin2 can use Content explorer to verify that Label2 is assigned to Mail1.	<input type="radio"/>	<input checked="" type="radio"/>

NEW QUESTION 143

- (Exam Topic 5)

Your network contains an on-premises Active Directory domain named contoso.com. The domain contains the objects shown in the following table.

Name	Configuration
Group1	Global security group
User1	Enabled user account
User2	Disabled user account

You configure Azure AD Connect to sync contoso.com to Azure AD. Which objects will sync to Azure AD?

- A. Group1 only
- B. User1 and User2 only
- C. Group1 and User1 only
- D. Group1, User1, and User2

Answer: D

Explanation:

Disabled accounts

Disabled accounts are synchronized as well to Azure AD. Disabled accounts are common to represent resources in Exchange, for example conference rooms. The exception is users with a linked mailbox; as previously mentioned, these will never provision an account to Azure AD.

The assumption is that if a disabled user account is found, then we won't find another active account later and the object is provisioned to Azure AD with the userPrincipalName and sourceAnchor found. In case another active account will join to the same metaverse object, then its userPrincipalName and sourceAnchor will be used.

Reference:

<https://learn.microsoft.com/en-us/azure/active-directory/hybrid/connect/concept-azure-ad-connect-sync-user-and>

NEW QUESTION 146

- (Exam Topic 5)

You have a Microsoft 365 tenant that has Enable Security defaults set to No in Azure Active Directory (Azure AD).

The tenant has two Compliance Manager assessments as shown in the following table.

Name	Score	Status	Assessment progress	Your improvement actions	Microsoft actions	Group	Product	Regulation
SP800	15444	Incomplete	72%	3 of 450 completed	887 of 887 completed	Group1	Microsoft 365	NIST 800-53
Data Protection Baseline	14370	Incomplete	70%	3 of 489 completed	835 of 835 completed	Group2	Microsoft 365	Data Protection Baseline

The SP800 assessment has the improvement actions shown in the following table.

Improvement action	Test status	Impact	Points achieved	Regulations
Establish a threat intelligence program	None	+9 points	0/9	NIST 800-53, Data Protection Baseline
Establish and document a configuration management program	None	+9 points	0/9	NIST 800-53, Data Protection Baseline

You perform the following actions:

> For the Data Protection Baseline assessment, change the Test status of Establish a threat intelligence program to Implemented.

> Enable multi-factor authentication (MFA) for all users.

For each of the following statements, select Yes if the statement is true. Otherwise, select No.

NOTE: Each correct selection is worth one point.

Statements	Yes	No
Establish a threat intelligence program will appear as Implemented in the SP800 assessment.	<input type="radio"/>	<input type="radio"/>
The SP800 assessment score will increase by 54 points.	<input type="radio"/>	<input type="radio"/>
The Data Protection Baseline score will increase by 9 points.	<input type="radio"/>	<input type="radio"/>

- A. Mastered
- B. Not Mastered

Answer: A

Explanation:

Graphical user interface, text Description automatically generated

Reference:

<https://docs.microsoft.com/en-us/microsoft-365/compliance/compliance-manager-assessments?view=o365-worldwide> <https://docs.microsoft.com/en-us/microsoft-365/compliance/compliance-score-calculation?view=o365-worldwide>

NEW QUESTION 148

- (Exam Topic 5)

You have a Microsoft 365 tenant.

You plan to implement device configuration profiles in Microsoft Intune. Which platform can you manage by using the profiles?

- A. Ubuntu Linux
- B. macOS
- C. Android Enterprise
- D. Windows 8.1

Answer: D

NEW QUESTION 150

- (Exam Topic 5)

Note: This question is part of a series of questions that present the same scenario. Each question in the series contains a unique solution that might meet the stated goals. Some question sets might have more than one correct solution, while others might not have a correct solution.

After you answer a question in this section, you will NOT be able to return to it. As a result, these questions will not appear in the review screen.

You have a computer that runs Windows 10.

You need to verify which version of Windows 10 is installed.

Solution: From the Settings app, you select System, and then you select About to view information about the system.

Does this meet the goal?

- A. Yes
- B. No

Answer: A

Explanation:

Reference:

<https://support.microsoft.com/en-us/windows/which-version-of-windows-operating-system-am-i-running-628be>

NEW QUESTION 155

- (Exam Topic 5)

You have a Microsoft Azure Active Directory (Azure AD) tenant named Contoso.com. You create a Microsoft Defender for identity instance Contoso.

The tenant contains the users shown in the following table.

Name	Member of group	Azure AD role
User1	Defender for Identity Contoso Administrators	None
User2	Defender for Identity Contoso Users	None
User3	None	Security administrator
User4	Defender for Identity Contoso Users	Global administrator

You need to modify the configuration of the Defender for identify sensors.

Solutions: You instruct User4 to modify the Defender for identity sensor configuration. Does this meet the goal?

- A. Yes
- B. No

Answer: A

NEW QUESTION 158

- (Exam Topic 5)

You have a Microsoft 365 E5 subscription that contains the users shown in the following table.

Name	Member of
User1	Group1, Group2
User2	Group2, Group3
User3	Group1, Group3

In Microsoft Endpoint Manager, you have the Policies for Office apps settings shown in the following table.

Name	Priority	Applies to
Policy1	0	Group1
Policy2	1	Group2
Policy3	2	Group3

The policies use the settings shown in the following table.

Name	Cursor movement	Clear cache on close
Policy1	Logical	Disabled
Policy2	Not configured	Enabled
Policy3	Visual	Enabled

For each of the following statements, select Yes if the statement is true. Otherwise, select No.

NOTE: Each correct selection is worth one point.

Statements	Yes	No
User1 has their cache cleared on close.	<input type="radio"/>	<input type="radio"/>
User2 has Cursor movement set to Visual.	<input type="radio"/>	<input type="radio"/>
User3 has Cursor movement set to Visual.	<input type="radio"/>	<input type="radio"/>

- A. Mastered
- B. Not Mastered

Answer: A

Explanation:

Graphical user interface, text, application Description automatically generated
Reference:
<https://docs.microsoft.com/en-us/deployoffice/overview-office-cloud-policy-service>

NEW QUESTION 162

- (Exam Topic 5)
You have a Microsoft 365 subscription that uses Microsoft Defender for Office 365.
You need to identify the settings that are below the Standard protection profile settings in the preset security policies.
What should you use? To answer, select the appropriate options in the answer area. NOTE: Each correct selection is worth one point.

Answer Area



- A. Mastered
- B. Not Mastered

Answer: A

Explanation:

Answer Area



NEW QUESTION 166

- (Exam Topic 5)
You have a Microsoft 365 E5 tenant that has sensitivity label support enabled for Microsoft and SharePoint Online.
You need to enable unified labeling for Microsoft 365 groups. Which cmdlet should you run?

- A. set-unifiedGroup
- B. Set-Labelpolicy
- C. Execute-AzureAdLabelSync
- D. Add-UnifiedGroupLinks

Answer: C

NEW QUESTION 171

- (Exam Topic 5)
You have an Azure AD tenant.

You have 1,000 computers that run Windows 10 Pro and are joined to Azure AD. You purchase a Microsoft 365 E3 subscription. You need to deploy Windows 10 Enterprise to the computers. The solution must minimize administrative effort. What should you do?

- A. From the Microsoft Endpoint Manager admin center, create a Windows Autopilot deployment profile. Assign the profile to all the computer
- B. Instruct users to restart their computer and perform a network restart.
- C. Enroll the computers in Microsoft Intune
- D. Create a configuration profile by using the Edition upgrade and mode switch template
- E. From the Microsoft Endpoint Manager admin center, assign the profile to all the computers and instruct users to restart their computer.
- F. From Windows Configuration Designer, create a provisioning package that has an EditionUpgrade configuration and upload the package to a Microsoft SharePoint Online site
- G. Instruct users to run the provisioning package from SharePoint Online.
- H. From the Azure Active Directory admin center, create a security group that has dynamic device membership
- I. Assign licenses to the group and instruct users to sign in to their computer.

Answer: B

NEW QUESTION 173

- (Exam Topic 5)

You have a Microsoft 365 E5 subscription that contains the devices shown in the following table.

Platform	Count
Windows 10	50
Android	50
Linux	50

You need to configure an incident email notification rule that will be triggered when an alert occurs only on a Windows 10 device. The solution must minimize administrative effort.

What should you do first?

- A. From the Microsoft 365 admin center, create a mail-enabled security group.
- B. From the Microsoft 365 Defender portal, create a device group.
- C. From the Microsoft Endpoint Manager admin center, create a device category.
- D. From the Azure Active Directory admin center, create a dynamic device group.

Answer: B

Explanation:

Reference:

<https://docs.microsoft.com/en-us/microsoft-365/security/defender-endpoint/machine-groups?view=o365-worldwide> <https://docs.microsoft.com/en-us/microsoft-365/security/defender-endpoint/configure-email-notifications?view=o365-worldwide>

NEW QUESTION 175

- (Exam Topic 5)

Note: This question is part of a series of questions that present the same scenario. Each question in the series contains a unique solution that might meet the stated goals. Some question sets might have more than one correct solution, while others might not have a correct solution.

After you answer a question in this section, you will NOT be able to return to it. As a result, these questions will not appear in the review screen.

You have a Microsoft 365 E5 subscription that contains a user named User1. You need to enable User1 to create Compliance Manager assessments.

Solution: From the Microsoft 365 compliance center, you add User1 to the Compliance Manager Assessors role group.

Does this meet the goal?

- A. Yes
- B. No

Answer: A

Explanation:

Reference:

<https://github.com/MicrosoftDocs/microsoft-365-docs/blob/public/microsoft-365/security/office-365-security/permissions-references-365.md#compliance-manager-assessors>

NEW QUESTION 179

- (Exam Topic 5)

You have a Microsoft 365 E5 subscription.

You need to compare the current Safe Links configuration to the Microsoft recommended configurations. What should you use?

- A. Microsoft Purview
- B. Azure AD Identity Protection
- C. Microsoft Secure Score
- D. the configuration analyzer

Answer: C

NEW QUESTION 183

- (Exam Topic 5)

HOTSPOT

You have a Microsoft 365 E5 subscription.

All company-owned Windows 11 devices are onboarded to Microsoft Defender for Endpoint. You need to configure Defender for Endpoint to meet the following requirements:

- Block a vulnerable app until the app is updated.

> Block an application executable based on a file hash. The solution must minimize administrative effort.
 What should you configure for each requirement? To answer, select the appropriate options in the answer area.
 NOTE: Each correct selection is worth one point.

Answer Area

Block a vulnerable app until the app is updated:

<input type="checkbox"/>	An allow or block file
<input type="checkbox"/>	A file indicator
<input type="checkbox"/>	A remediation request
<input type="checkbox"/>	An update ring

Block an application executable based on a file hash:

<input type="checkbox"/>	An allow or block file
<input type="checkbox"/>	A file indicator
<input type="checkbox"/>	A remediation request
<input type="checkbox"/>	An update ring

- A. Mastered
- B. Not Mastered

Answer: A

Explanation:

Box 1: A remediation request

Block a vulnerable app until the app is updated. Block vulnerable applications

How to block vulnerable applications

- > Go to Vulnerability management > Recommendations in the Microsoft 365 Defender portal.
- > Select a security recommendation to see a flyout with more information.
- > Select Request remediation.
- > Select whether you want to apply the remediation and mitigation to all device groups or only a few.
- > Select the remediation options on the Remediation request page. The remediation options are software update, software uninstall, and attention required.
- > Pick a Remediation due date and select Next.
- > Under Mitigation action, select Block or Warn. Once you submit a mitigation action, it is immediately applied.
- > Review the selections you made and Submit request. On the final page you can choose to go directly to the remediation page to view the progress of remediation activities and see the list of blocked applications.

Box 2: A file indicator

Block an application executable based on a file hash.

While taking the remediation steps suggested by a security recommendation, security admins with the proper permissions can perform a mitigation action and block vulnerable versions of an application. File indicators of compromise (IOC)s are created for each of the executable files that belong to vulnerable versions of that application. Microsoft Defender Antivirus then enforces blocks on the devices that are in the specified scope.

The option to View details of blocked versions in the Indicator page brings you to the Settings > Endpoints > Indicators page where you can view the file hashes and response actions.

Reference:

<https://learn.microsoft.com/en-us/microsoft-365/security/defender-vulnerability-management/tvm-block-vuln-ap>

NEW QUESTION 188

- (Exam Topic 5)

You have a Microsoft 365 subscription.

You need to configure a compliance solution that meets the following requirements: Defines sensitive data based on existing data samples

Automatically prevents data that matches the samples from being shared externally in Microsoft SharePoint or email messages

Which two components should you configure? Each correct answer presents part of the solution.

NOTE: Each correct selection is worth one point.

- A. a trainable classifier
- B. a sensitive info type
- C. an insider risk policy
- D. an adaptive policy scope
- E. a data loss prevention (DLP) policy

Answer: AE

Explanation:

A: Classifiers

This categorization method is well suited to content that isn't easily identified by either the manual or automated pattern-matching methods. This method of categorization is more about using a classifier to identify an item based on what the item is, not by elements that are in the item (pattern matching). A classifier learns how to identify a type of content by looking at hundreds of examples of the content you're interested in identifying.

Where you can use classifiers

Classifiers are available to use as a condition for: Office auto-labeling with sensitivity labels

Auto-apply retention label policy based on a condition Communication compliance

Sensitivity labels can use classifiers as conditions, see Apply a sensitivity label to content automatically. Data loss prevention

E: Organizations have sensitive information under their control such as financial data, proprietary data, credit card numbers, health records, or social security numbers. To help protect this sensitive data and reduce risk, they need a way to prevent their users from inappropriately sharing it with people who shouldn't have it. This practice is called data loss prevention (DLP).

Reference:

<https://learn.microsoft.com/en-us/microsoft-365/compliance/classifier-learn-about> <https://learn.microsoft.com/en-us/microsoft-365/compliance/dlp-learn-about-dlp>

NEW QUESTION 190

- (Exam Topic 5)

Your company has multiple offices.

You have a Microsoft 365 E5 tenant that uses Microsoft Intune for device management. Each office has a local administrator.

You need to ensure that the local administrators can manage only the devices in their respective office. What should you use?

- A. scope tags
- B. configuration profiles
- C. device categories
- D. conditional access policies

Answer: A

Explanation:

Reference:

<https://docs.microsoft.com/en-us/mem/intune/fundamentals/scope-tags>

NEW QUESTION 193

- (Exam Topic 5)

You have a Microsoft 365 E5 subscription that contains a Microsoft SharePoint Online site named Site1. You need to automatically label the documents on Site1 that contain credit card numbers.

Which three actions should you perform in sequence? To answer, move the appropriate actions from the list of actions to the answer area and arrange them in the correct order.

Actions	Answer Area
Create a sensitivity label.	
Create an auto-labeling policy.	
Create a sensitive information type.	
Wait 24 hours, and then turn on the policy.	
Publish the label.	
Create a retention label.	
Wait eight hours, and then turn on the policy.	

- A. Mastered
- B. Not Mastered

Answer: A

Explanation:

Graphical user interface, text, application, email Description automatically generated

Reference:

<https://docs.microsoft.com/en-us/microsoft-365/compliance/sensitivity-labels?view=o365-worldwide#what-labe> <https://docs.microsoft.com/en-us/microsoft-365/compliance/apply-sensitivity-label-automatically?view=o365-w>

NEW QUESTION 195

- (Exam Topic 5)

You have a Microsoft 365 E5 subscription.

You need to identify which users accessed Microsoft Office 365 from anonymous IP addresses during the last seven days.

What should you do?

- A. From the Cloud App Security admin center, select Users and accounts.
- B. From the Microsoft 365 security center, view the Threat tracker.
- C. From the Microsoft 365 admin center, view the Security & compliance report.
- D. From the Azure Active Directory admin center, view the Risky sign-ins report.

Answer: A

NEW QUESTION 198

- (Exam Topic 5)

You have an Azure Active Directory (Azure AD) tenant that contains a user named User1. Your company purchases a Microsoft 365 subscription.

You need to ensure that User1 is assigned the required role to create file policies and manage alerts in the Cloud App Security admin center.

Solution: From the Azure Active Directory admin center, you assign the Compliance administrator role to User1.

Does this meet the goal?

- A. Yes
- B. No

Answer: A

NEW QUESTION 200

- (Exam Topic 5)

You have a Microsoft 365 E5 subscription that uses Azure Advanced Threat Protection (ATP). You need to create a detection exclusion in Azure ATP.

Which tool should you use?

- A. the Security & Compliance admin center
- B. Microsoft Defender Security Center
- C. the Microsoft 365 admin center

- D. the Azure Advanced Threat Protection portal
 E. the Cloud App Security portal

Answer: D

Explanation:

Reference:

<https://docs.microsoft.com/en-us/defender-for-identity/what-is> <https://docs.microsoft.com/en-us/defender-for-identity/excluding-entities-from-detections>

NEW QUESTION 203

- (Exam Topic 5)

You have a Microsoft 365 tenant that contains the groups shown in the following table.

Name	Type
Group1	Microsoft 365
Group2	Distribution
Group3	Mail-enabled security
Group4	Security

You plan to create a compliance policy named Compliance1.

You need to identify the groups that meet the following requirements:

- > Can be added to Compliance1 as recipients of noncompliance notifications
- > Can be assigned to Compliance1

To answer, select the appropriate options in the answer area.

NOTE: Each correct selection is worth one point.

Can be added to Compliance1 as recipients of noncompliance notifications:

▼

Group1 and Group4 only
 Group3 and Group4 only
 Group1, Group2 and Group3 only
 Group1, Group3, and Group4 only
 Group1, Group2, Group3, and Group4

Can be assigned to Compliance1:

▼

Group1 and Group4 only
 Group3 and Group4 only
 Group1, Group2 and Group3 only
 Group1, Group3, and Group4 only
 Group1, Group2, Group3, and Group4

- A. Mastered
 B. Not Mastered

Answer: A

Explanation:

Graphical user interface, text, application, chat or text message Description automatically generated

Reference:

<https://www.itpromentor.com/devices-or-users-when-to-target-which-policy-type-in-microsoft-endpoint-manage>

NEW QUESTION 207

- (Exam Topic 5)

You have a Microsoft 365 E5 subscription that contains the devices shown in the following table.

Name	Platform
Device1	Windows 11
Device2	Windows 10
Device3	Android
Device4	iOS

All the devices are onboarded To Microsoft Defender for Endpoint

You plan to use Microsoft Defender Vulnerability Management to meet the following requirements:

- Detect operating system vulnerabilities.

Answer Area

Detect operating system vulnerabilities

▼

 Device1 only
 Device1 and Device2 only
 Device1, Device2, and Device3 only
 Device1, Device2, and Device4 only
 Device1, Device2, Device3 and Device4

Perform a configuration assessment of the operating system

▼

 Device1 only
 Device1 and Device2 only
 Device1, Device2, and Device3 only
 Device1, Device2, and Device4 only
 Device1, Device2, Device3 and Device4

- A. Mastered
- B. Not Mastered

Answer: A

Explanation:

Answer Area

Detect operating system vulnerabilities

Device1 only
 Device1 and Device2 only
 Device1, Device2, and Device3 only
 Device1, Device2, and Device4 only
 Device1, Device2, Device3 and Device4

Perform a configuration assessment of the operating system

Device1 only
 Device1 and Device2 only
 Device1, Device2, and Device3 only
 Device1, Device2, and Device4 only
 Device1, Device2, Device3 and Device4

NEW QUESTION 210

- (Exam Topic 5)

You have a Microsoft 365 tenant.

You plan to implement Endpoint Protection device configuration profiles. Which platform can you manage by using the profile?

- A. Android
- B. CentOS Linux
- C. iOS
- D. Windows 10

Answer: D

Explanation:

Reference:

<https://docs.microsoft.com/en-us/mem/intune/protect/endpoint-protection-configure>

NEW QUESTION 212

- (Exam Topic 5)

Note: This question is part of a series of questions that present the same scenario. Each question in the series contains a unique solution that might meet the stated goals. Some question sets might have more than one correct solution, while others might not have a correct solution.

After you answer a question in this section, you will NOT be able to return to it. As a result, these questions will not appear in the review screen.

Your network contains an on-premises Active Directory domain. The domain contains domain controllers that run Windows Server 2019. The functional level of the forest and the domain is Windows Server 2012 R2.

The domain contains 100 computers that run Windows 10 and a member server named Server1 that runs Windows Server 2012 R2.

You plan to use Server1 to manage the domain and to configure Windows 10 Group Policy settings. You install the Group Policy Management Console (GPMC) on Server1.

You need to configure the Windows Update for Business Group Policy settings on Server1.

Solution: You raise the domain functional level to Windows Server 2019. You copy the Group Policy Administrative Templates from a Windows 10 computer to the Netlogon share on all the domain controllers.

Does this meet the goal?

- A. Yes
- B. No

Answer: B

NEW QUESTION 214

- (Exam Topic 5)

You purchase a new computer that has Windows 10, version 2004 preinstalled.

You need to ensure that the computer is up-to-date. The solution must minimize the number of updates installed.

What should you do on the computer?

- A. Install all the feature updates released since version 2004 and all the quality updates released since version 2004 only.
- B. Install the latest feature update and the latest quality update only.
- C. Install all the feature updates released since version 2004 and the latest quality update only.
- D. Install the latest feature update and all the quality updates released since version 2004.

Answer: B

NEW QUESTION 219

- (Exam Topic 5)

You have a Microsoft 365 E5 tenant that contains five devices enrolled in Microsoft Intune as shown in the following table.

Name	Platform
Device1	Windows 10
Device2	Android 8.1.0
Device3	Android 10
Device4	iOS 12
Device5	iOS 14

All the devices have an app named App1 installed.

You need to prevent users from copying data from App1 and pasting the data into other apps.

Which policy should you create in Microsoft Endpoint Manager, and what is the minimum number of required policies? To answer, select the appropriate options in the answer area.

NOTE: Each correct selection is worth one point.

Policy to create in Microsoft Endpoint Manager:

▼

An app configuration policy
An app protection policy
A conditional access policy
A device compliance policy

Minimum number of required policies:

▼

1
2
3
5

- A. Mastered
- B. Not Mastered

Answer: A

Explanation:

Graphical user interface, application, table Description automatically generated

Reference:

<https://docs.microsoft.com/en-us/mem/intune/apps/app-protection-policy>

NEW QUESTION 222

- (Exam Topic 5)

You have a Microsoft 365 tenant that contains a Windows 10 device. The device is onboarded to Microsoft Defender for Endpoint.

From Microsoft Defender Security Center, you perform a security investigation.

You need to run a PowerShell script on the device to collect forensic information. Which action should you select on the device page?

- A. Initiate Live Response Session
- B. Initiate Automated Investigation
- C. Collect investigation package
- D. Go hunt

Answer: A

Explanation:

Reference:

<https://docs.microsoft.com/en-us/microsoft-365/security/defender-endpoint/live-response?view=o365-worldwid>

NEW QUESTION 223

- (Exam Topic 5)

You have a Microsoft 365 tenant that contains 1,000 Windows 10 devices. The devices are enrolled in Microsoft Intune.

Company policy requires that the devices have the following configurations:

- > Require complex passwords.
- > Require the encryption of removable data storage devices.
- > Have Microsoft Defender Antivirus real-time protection enabled.

You need to configure the devices to meet the requirements. What should you use?

- A. an app configuration policy
- B. a compliance policyC a security baseline profile D a conditional access policy

Answer: B

Explanation:

Reference:

<https://docs.microsoft.com/en-us/mem/intune/protect/device-compliance-get-started>

NEW QUESTION 226

- (Exam Topic 5)

HOTSPOT

You have a Microsoft 365 E5 subscription that contains two users named Admin1 and Admin2. All users are assigned a Microsoft 365 Enterprise E5 license and auditing is turned on.

You create the audit retention policy shown in the exhibit. (Click the Exhibit tab.)

New audit retention policy

Name *:

Policy1

Description

Record Types

AzureActiveDirectory -

Activities

Added user, Deleted user, Reset user password, Changed user password, Changed user license, ...(7) -

Users:

Admin1

Duration *:

☒ 90 Days
☐ 6 Months
☐ 1 Year

Priority *:

100

Save

Cancel

After Policy1 is created, the following actions are performed:

- > Admin1 creates a user named User1.
- > Admin2 creates a user named User2.

How long will the audit events for the creation of User1 and User2 be retained? To answer, select the appropriate options in the answer area.

NOTE: Each correct selection is worth one point.

User1:

▼

0 days
30 days
90 days
180 days
365 days

User2:

▼

0 days
30 days
90 days
180 days
365 days

- A. Mastered
- B. Not Mastered

Answer: A

Explanation:

Reference:

<https://docs.microsoft.com/en-us/microsoft-365/compliance/audit-log-retention-policies?view=o365-worldwide>

NEW QUESTION 231

- (Exam Topic 5)

DRAG DROP

Your network contains an on-premises Active Directory domain that syncs to Azure Active Directory (Azure AD). The domain contains the servers shown in the following table.

Name	Operating system	Configuration
Server1	Windows Server 2016	File Server Resource Manager (FSRM)
Server2	Windows Server 2016	None

You use Azure Information Protection.

You need to ensure that you can apply Azure Information Protection labels to the file stores on Server1. Which three actions should you perform in sequence? To answer, move the appropriate actions from the list of actions to the answer area and arrange them in the correct order.

Actions

Answer Area

Authorize Server1.

Install the Microsoft Rights Management connector on Server2.

Install a certificate on Server2.

Install a certificate on Server1.

Register a service principal name for Server1.

Run GenConnectorConfig.ps1 on Server1.

Run GenConnectorConfig.ps1 on Server2.

- A. Mastered
- B. Not Mastered

Answer: A

Explanation:

Reference:

<https://docs.microsoft.com/en-us/azure/information-protection/install-configure-rms-connector> <https://docs.microsoft.com/en-us/azure/information-protection/configure-servers-rms-connector>

NEW QUESTION 232

- (Exam Topic 5)

You have a Microsoft 365 subscription.

You configure a new Azure AD enterprise application named App1. App1 requires that a user be assigned the Reports Reader role.

Which type of group should you use to assign the Reports Reader role and to access App1?

- A. a Microsoft 365 group that has assigned membership
- B. a Microsoft 365 group that has dynamic user membership
- C. a security group that has assigned membership
- D. a security group that has dynamic user membership

Answer: C

Explanation:

To grant permissions to assignees to manage users and group access for a specific enterprise app, go to that app in Azure AD and open in the Roles and Administrators list for that app. Select the new custom role and complete the user or group assignment. The assignees can manage users and group access only for the specific app.

Note: You can add the following types of groups:

Assigned groups - Manually add users or devices into a static group.

Dynamic groups (Requires Azure AD Premium) - Automatically add users or devices to user groups or device groups based on an expression you create.

Note:

Security groups

Security groups are used for granting access to Microsoft 365 resources, such as SharePoint. They can make administration easier because you need only administer the group rather than adding users to each resource individually.

Security groups can contain users or devices. Creating a security group for devices can be used with mobile device management services, such as Intune.

Security groups can be configured for dynamic membership in Azure Active Directory, allowing group members or devices to be added or removed automatically based on user attributes such as department, location, or title; or device attributes such as operating system version.

Security groups can be added to a team.

Microsoft 365 Groups can't be members of security groups. Microsoft 365 Groups

Microsoft 365 Groups are used for collaboration between users, both inside and outside your company. With each Microsoft 365 Group, members get a group email and shared workspace for conversations, files, and calendar events, Stream, and a Planner.

Reference:

<https://learn.microsoft.com/en-us/azure/active-directory/roles/custom-enterprise-apps> <https://learn.microsoft.com/en-us/microsoft-365/admin/create-groups/compare-groups?> <https://learn.microsoft.com/en-us/mem/intune/apps/apps-deploy>

NEW QUESTION 236

- (Exam Topic 5)

You have a Microsoft 365 E5 tenant that contains the resources shown in the following table.

Name	Type
Mailbox1	Microsoft Exchange Online mailbox
Account1	Microsoft OneDrive account
Site1	Microsoft SharePoint Online site
Channel	Microsoft Teams channel

To which resources can you apply a sensitivity label by using an auto-labeling policy?

- A. Mailbox1 and Site1 only
- B. Mailbox1, Account1, and Site1 only
- C. Account1 and Site1 only
- D. Mailbox1, Account1, Site1, and Channel1
- E. Account1, Site1, and Channel1 only

Answer: E

Explanation:

Reference:

<https://docs.microsoft.com/en-us/microsoft-365/compliance/sensitivity-labels?view=o365-worldwide>

NEW QUESTION 240

- (Exam Topic 5)

Note: This question is part of a series of questions that present the same scenario. Each question in the series contains a unique solution that might meet the stated goals. Some question sets might have more than one correct solution, while others might not have a correct solution.

After you answer a question in this section, you will NOT be able to return to it. As a result, these questions will not appear in the review screen.

You have a computer that runs Windows 10.

You need to verify which version of Windows 10 is installed. Solution: From Device Manager, you view the computer properties. Does this meet the goal?

- A. Yes
- B. No

Answer: B

Explanation:

Reference:

<https://support.microsoft.com/en-us/windows/which-version-of-windows-operating-system-am-i-running-628be>

NEW QUESTION 245

- (Exam Topic 5)

HOTSPOT

Your network contains an on-premises Active Directory forest named contoso.com. The forest contains the following domains:

- > Contoso.com
- > East.contoso.com

The forest contains the users shown in the following table.

Name	UPN suffix
User1	Contoso.com
User2	East.contoso.com
User3	Fabrikam.com

The forest syncs to an Azure AD tenant named contoso.com as shown in the exhibit. (Click the Exhibit tab.)

PROVISION FROM ACTIVE DIRECTORY



Azure AD Connect cloud provisioning

This feature allows you to manage provisioning from the cloud.

[Manage provisioning \(Preview\)](#)

Azure AD Connect sync

Sync Status	Enabled
Last Sync	Less than 1 hour ago
Password Hash Sync	Disabled

USER SIGN-IN



Federation	Disabled	0 domains
Seamless single sign-on	Enabled	1 domain
Pass-through authentication	Enabled	2 agents

For each of the following statements, select Yes if the statement is true. Otherwise, select No.
 NOTE: Each correct selection is worth one point.

Answer Area	Statements	Yes	No
	User1 can authenticate to Azure AD by using a username of user1@contoso.com.	<input checked="" type="checkbox"/>	<input type="checkbox"/>
	User2 can authenticate to Azure AD by using a username of user2@contoso.com.	<input type="checkbox"/>	<input type="checkbox"/>
	User3 can authenticate to Azure AD by using a username of user3@contoso.com.	<input type="checkbox"/>	<input type="checkbox"/>

- A. Mastered
- B. Not Mastered

Answer: A

Explanation:

Box 1: Yes

The UPN of user1 is user1@contoso.com so he can authenticate to Azure AD by using the username user1@contoso.com.

Box 2: No

The UPN of user2 is user2@east.contoso.com so he cannot authenticate to Azure AD by using the username user2@contoso.com.

Box 3: No

The UPN of user3 is user3@fabrikam.com so he cannot authenticate to Azure AD by using the username user3@contoso.com.

NEW QUESTION 248

- (Exam Topic 5)

Your network contains an on-premises Active Directory domain named contoso.com. The domain contains 1,000 Windows 10 devices.

You perform a proof of concept (PoC) deployment of Microsoft Defender for Endpoint for 10 test devices. During the onboarding process, you configure Microsoft Defender for Endpoint-related data to be stored in the United States.

You plan to onboard all the devices to Microsoft Defender for Endpoint. You need to store the Microsoft Defender for Endpoint data in Europe. What should you do first?

- A. Delete the workspace.
- B. Create a workspace.
- C. Onboard a new device.
- D. Offboard the test devices.

Answer: B

Explanation:

Storage locations

Understand where Defender for Cloud stores data and how you can work with your data:

* Machine information

- Stored in a Log Analytics workspace.

- You can use either the default Defender for Cloud workspace or a custom workspace. Data is stored in accordance with the workspace location.

Reference:

<https://learn.microsoft.com/en-us/azure/defender-for-cloud/plan-defender-for-servers-data-workspace>

NEW QUESTION 253

- (Exam Topic 5)

Note: This question is part of a series of questions that present the same scenario. Each question in the series contains a unique solution that might meet the stated goals. Some question sets might have more than one correct solution, while others might not have a correct solution.

After you answer a question in this section, you will NOT be able to return to it. As a result, these questions will not appear in the review screen.

You have a Microsoft 365 E5 subscription that contains a user named User1. You need to enable User1 to create Compliance Manager assessments.

Solution: From the Microsoft 365 admin center, you assign User1 the Compliance data admin role. Does this meet the goal?

- A. Yes
- B. No

Answer: B

Explanation:

Reference:

<https://github.com/MicrosoftDocs/microsoft-365-docs/blob/public/microsoft-365/security/office-365-security/pe>

NEW QUESTION 255

- (Exam Topic 5)

You have a Microsoft 365 subscription.

You need to add additional onmicrosoft.com domains to the subscription. The additional domains must be assignable as email addresses for users.

What is the maximum number of onmicrosoft.com domains the subscription can contain?

- A. 1
- B. 2
- C. 5
- D. 10

Answer: C

Explanation:

You are limited to five onmicrosoft.com domains in your Microsoft 365 environment, so make sure to check for spelling and to assess your need if you choose to create a new one.

Reference:

<https://learn.microsoft.com/en-us/microsoft-365/admin/setup/domains-faq>

NEW QUESTION 256

- (Exam Topic 5)

HOTSPOT

Your company uses a legacy on-premises LDAP directory that contains 100 users. The company purchases a Microsoft 365 subscription.

You need to import the 100 users into Microsoft 365 by using the Microsoft 365 admin center.

Which type of file should you use and which properties are required? To answer, select the appropriate options in the answer area.

NOTE: Each correct selection is worth one point.

Answer Area

File type to use:

CSV
JSON
PST
XML

Required properties for each user:

Display Name and Department
First Name and Last Name
User Name and Department
User Name and Display Name

A. Mastered

B. Not Mastered

Answer: A

Explanation:

Box 1: CSV

Add multiple users in the Microsoft 365 admin center

- > Sign in to Microsoft 365 with your work or school account.
- > In the admin center, choose Users > Active users.
- > Select Add multiple users.
- > On the Import multiple users panel, you can optionally download a sample CSV file with or without sample data filled in.
- > Etc.

Note: More information about how to add users to Microsoft 365 Not sure what CSV format is?

A CSV file is a file with comma separated values. You can create or edit a file like this with any text editor or spreadsheet program, such as Excel.

Box 2: User Name and Display Name

What if I don't have all the information required for each user? The user name and display name are required, and you cannot add a new user without this information. If you don't have some of the other information, such as the fax, you can use a space plus a comma to indicate that the field should remain blank.

Reference:

<https://learn.microsoft.com/en-us/microsoft-365/enterprise/add-several-users-at-the-same-time>

NEW QUESTION 261

- (Exam Topic 5)

You have a Microsoft 365 E5 tenant.

You need to ensure that when a document containing a credit card number is added to the tenant, the document is encrypted.

Which policy should you use?

- A. a retention policy
- B. a retention label policy
- C. an auto-labeling policy
- D. an insider risk policy

Answer: C

Explanation:

Reference:

<https://docs.microsoft.com/en-us/microsoft-365/compliance/apply-sensitivity-label-automatically?view=o365-w>

NEW QUESTION 266

- (Exam Topic 5)

You have a Microsoft 365 E5 tenant.

You have a sensitivity label configured as shown in the Sensitivity label exhibit. (Click the Sensitivity label tab.)

Review your settings and finish

Name
Sensitivity1

Display name
Sensitivity1

Description for users
Sensitivity1

Scope
File.Email

Encryption

Content marking
Watermark: Watermark
Header: Header

Auto-labeling

Group settings

Site settings

Auto-labeling for database columns
None

You have an auto-labeling policy as shown in the Auto-labeling policy exhibit. (Click the Auto-labeling policy tab.)

Auto-labeling policy

Edit Policy

Delete Policy

Policy name
Auto-labeling policy

Description

Label in simulation
Sensitivity1

Info to label
IP Address

Apply to content in these locations
Exchange email All

Rules for auto-applying this label
Exchange email 1 rule

Mode
On

Comment

A user sends an email that contains the components shown in the following table.

Type	File	Includes IP address
Mail body	Not applicable	No
Attachment	File1.docx	Yes
Attachment	File2.xml	Yes

For each of the following statements, select Yes if the statement is true. Otherwise, select No.
NOTE: Each correct selection is worth one point.

Statements	Yes	No
Sensitivity1 is applied to the email.	<input type="radio"/>	<input type="radio"/>
A watermark is added to File1.docx.	<input type="radio"/>	<input type="radio"/>
A header is added to File2.xml.	<input type="radio"/>	<input type="radio"/>

- A. Mastered
- B. Not Mastered

Answer: A

Explanation:
Graphical user interface, text, application Description automatically generated

Reference:

<https://docs.microsoft.com/en-us/microsoft-365/compliance/apply-sensitivity-label-automatically?view=o365-w>

NEW QUESTION 268

- (Exam Topic 5)

You have a Microsoft 365 E3 subscription that uses Microsoft Defender for Endpoint Plan 1.

Which two Defender for Endpoint features are available to the subscription? Each correct answer presents part of the solution.

NOTE: Each correct selection is worth one point.

- A. advanced hunting
- B. security reports
- C. digital certificate assessment
- D. device discovery
- E. attack surface reduction (ASR)

Answer: BE

Explanation:

B: Overview of Microsoft Defender for Endpoint Plan 1, Reporting

The Microsoft 365 Defender portal (<https://security.microsoft.com>) provides easy access to information about detected threats and actions to address those threats.

The Home page includes cards to show at a glance which users or devices are at risk, how many threats were detected, and what alerts/incidents were created.

The Incidents & alerts section lists any incidents that were created as a result of triggered alerts. Alerts and incidents are generated as threats are detected across devices.

The Action center lists remediation actions that were taken. For example, if a file is sent to quarantine, or a URL is blocked, each action is listed in the Action center on the History tab.

The Reports section includes reports that show threats detected and their status. E: What can you expect from Microsoft Defender for Endpoint P1?

Microsoft Defender for Endpoint P1 is focused on prevention/EPP including:

Next-generation antimalware that is cloud-based with built-in AI that helps to stop ransomware, known and unknown malware, and other threats in their tracks.

(E) Attack surface reduction capabilities that harden the device, prevent zero days, and offer granular control over access and behaviors on the endpoint.

Device based conditional access that offers an additional layer of data protection and breach prevention and enables a Zero Trust approach.

The below table offers a comparison of capabilities are offered in Plan 1 versus Plan 2.

Capabilities	P1	P2
Unified security tools and centralized management	✓	✓
Next-generation antimalware	✓	✓
Attack surface reduction rules	✓	✓
Device control (e.g.: USB)	✓	✓
Endpoint firewall	✓	✓
Network protection	✓	✓
Web control / category-based URL backing	✓	✓
Device-based conditional access	✓	✓
Controlled folder access	✓	✓
APIs, SIEM connector, custom TI	✓	✓
Application control	✓	✓
Endpoint detection and response		✓
Automated investigation and remediation		✓
Threat and vulnerability management		✓
Threat intelligence (Threat Analytics)		✓
Sandbox (deep analysis)		✓
Microsoft Threat Experts**		✓

**Includes Targeted Attack Notifications (TAN) and Experts On Demand (EOD). Customers must apply for TAN. EOD is available for purchase as an add-on.

Incorrect:

Not A: P2 is by far the best fit for enterprises that need an EDR solution including automated investigation and remediation tools, advanced threat prevention and threat and vulnerability management (TVM), and hunting capabilities.

Reference:

<https://learn.microsoft.com/en-us/microsoft-365/security/defender-endpoint/defender-endpoint-plan-1> <https://techcommunity.microsoft.com/t5/microsoft-defender-for-endpoint/microsoft-defender-for-endpoint-plan>

NEW QUESTION 273

- (Exam Topic 5)

Your on-premises network contains an Active Directory domain named Contoso.com and 500 devices that run either macOS, Windows 8.1. Windows 10, or Windows 11. All the devices are managed by using Microsoft Endpoint Configuration Manager. The domain syncs with Azure Active Directory (Azure AD).

You plan to implement a Microsoft 365 E5 subscription and enable co-management. Which devices can be co-managed after the implementation?

- A. Windows 11 and Windows 10 only
- B. Windows 11, Windows 10-Windows8.1.andmacOS
- C. Windows 11 and macOS only
- D. Windows 11 only
- E. Windows 11. Windows 10, and Windows8.1 only

Answer: C

NEW QUESTION 276

- (Exam Topic 5)

You have a Microsoft 365 E5 tenant.

You create a retention label named Retention1 as shown in the following exhibit.

Review your settings

Name Edit
Retention1

Description for admins Edit

Description for users Edit

File plan descriptors Edit

Reference Id:1
Business function/department Legal
Category: Compliance
Authority type: Legal

Retention Edit
7 years
Retain only
Based on when it was created

Back Create this label Cancel

When users attempt to apply Retention1, the label is unavailable. You need to ensure that Retention1 is available to all the users. What should you do?

- A. Create a new label policy
- B. Modify the Authority type setting for Retention!
- C. Modify the Business function/department setting for Retention 1.
- D. Use a file plan CSV template to import Retention1.

Answer: A

Explanation:

Reference:

<https://docs.microsoft.com/en-us/microsoft-365/compliance/create-apply-retention-labels?view=o365-worldwid>

NEW QUESTION 280

.....

THANKS FOR TRYING THE DEMO OF OUR PRODUCT

Visit Our Site to Purchase the Full Set of Actual MS-102 Exam Questions With Answers.

We Also Provide Practice Exam Software That Simulates Real Exam Environment And Has Many Self-Assessment Features. Order the MS-102 Product From:

<https://www.2passeasy.com/dumps/MS-102/>

Money Back Guarantee

MS-102 Practice Exam Features:

- * MS-102 Questions and Answers Updated Frequently
- * MS-102 Practice Questions Verified by Expert Senior Certified Staff
- * MS-102 Most Realistic Questions that Guarantee you a Pass on Your FirstTry
- * MS-102 Practice Test Questions in Multiple Choice Formats and Updatesfor 1 Year