

# HP

## Exam Questions HPE6-A73

Aruba Certified Switching Professional Exam



#### NEW QUESTION 1

What must a network administrator implement in order to run an NAE script on an AOS-CX switch?

- A. Deployment
- B. Schedule
- C. Plan
- D. Agent

**Answer: D**

#### NEW QUESTION 2

A company has a third-party AAA server solution. The campus access layer was just upgraded to AOS-CX switches that perform access control with MAC-Auth and 802.1X. The company has an Aruba Mobility Controller (MC) solution for wireless, and they want to leverage the firewall policies on the controllers for the wired traffic.

What is correct about how the company should implement a security solution where the wired traffic is processed by the MCs?D18912E1457D5D1DDCBD40AB3BF70D5D

- A. Implement downloadable user roles with a gateway role defined on the AOS-CX switches
- B. Implement local user roles with a gateway role defined on the AOS-CX switches
- C. Implement standards-based RADIUS VSAs to pass policy information directly to the AOS-CX switches and MCs
- D. Implement downloadable user roles with a device role defined on the AOS-CX switches and MCs

**Answer: D**

#### NEW QUESTION 3

Examine the following AOS-CX configuration:

```
Switch(config)# class ip IoT-traffic
Switch(config-class-ip)# match ip 192.168.0.0/16 any
Switch(config-class-ip)# exit
Switch(config)# pbr-action-list reroute
Switch(config-prb-action-list)# default-nexthop 10.100.1.2
Switch(config-prb-action-list)# exit
Switch(config)# policy IoT-policy
Switch(config-policy)# class ip IoT-traffic action pbr reroute
Switch(config-policy)# exit
Switch(config)# interface vlan 999
Switch(config-if)# apply policy IoT-policy routed-in
Switch(config-if)# exit
```

Based on this configuration, which statement is correct regarding IoT traffic?

- A. If 10.100.1.2 is not reachable, the IoT traffic will be automatically dropped by the switch
- B. If a specific route is not available in the routing table, the traffic will be routed to 10.100.1.2
- C. The next hop of 10.100.1.2 can be one or more hops away from the AOS-CX switch
- D. All routes are ignored in the routing table for IoT traffic, which is routed to 10.100.1.2

**Answer: B**

#### NEW QUESTION 4

Which protocol should be configured to allow NetEdit to discover third-party devices?

- A. SNMP
- B. SSH
- C. HTTPS
- D. HTTP

**Answer: A**

#### NEW QUESTION 5

An administrator has an aggregation layer of 8325CX switches configured as a VSX pair. The administrator is concerned that when OSPF network changes occur, the aggregation switches will respond to the changes slowly, and this will affect network connectivity, especially VoIP calls, in the connected access layer switches. What should the administrator do on the aggregation layer switches to alleviate this issue?

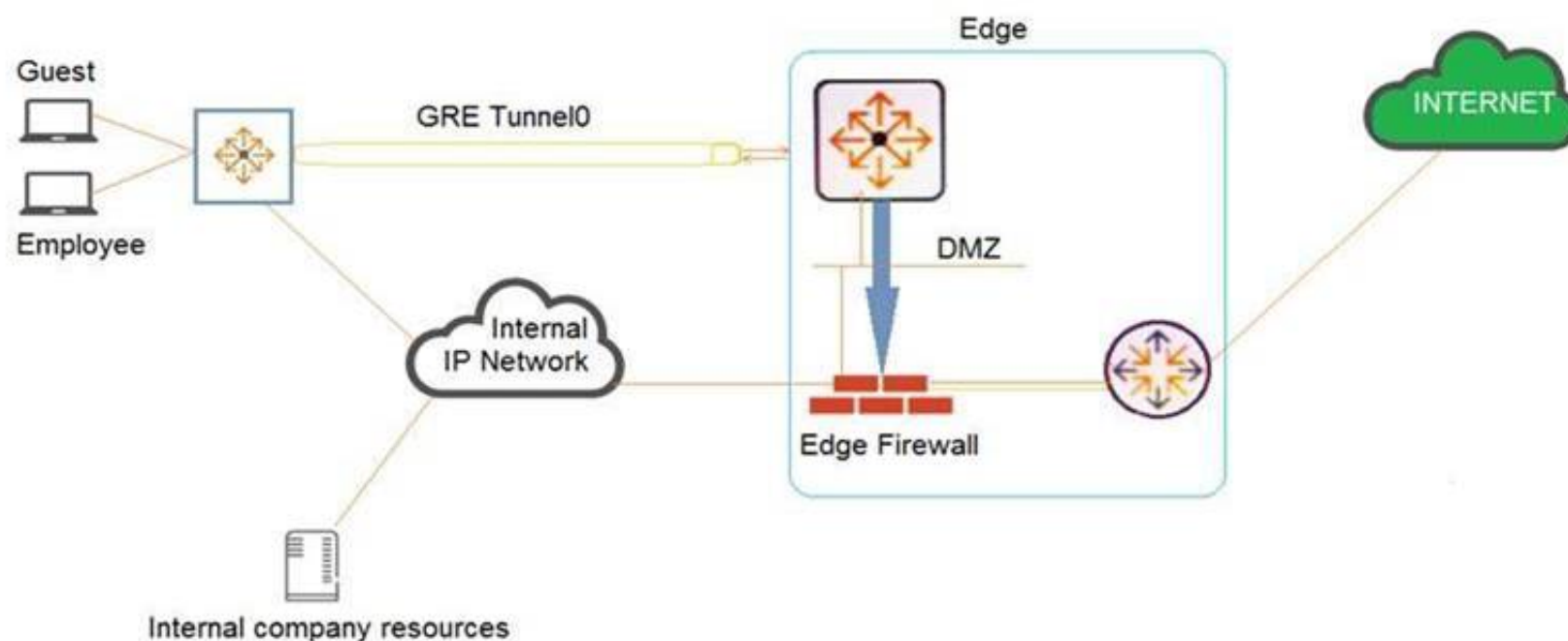
D18912E1457D5D1DDCBD40AB3BF70D5D

- A. Implement route aggregation
- B. Implement bidirectional forwarding detection (BFD)
- C. Reduce the hello and dead interval timers
- D. Implement graceful restart

**Answer: B**

#### NEW QUESTION 6

Examine the network exhibit.



A company has a guest implementation for wireless and wired access. Wireless access is implemented through a third-party vendor. The company is concerned about wired guest traffic traversing the same network as the employee traffic. The network administrator has established a GRE tunnel between AOS-CX switches where guests are connected to a routing switch in the DMZ.

Which feature should the administrator implement to ensure that the guest traffic is tunneled to the DMZ while the employee traffic is forwarded using OSPF?

- A. OSPF route maps using the “set metric” command
- B. Policy-based routing (PBR)
- C. User-based tunneling (UBT)
- D. Classifier policies

**Answer: B**

#### NEW QUESTION 7

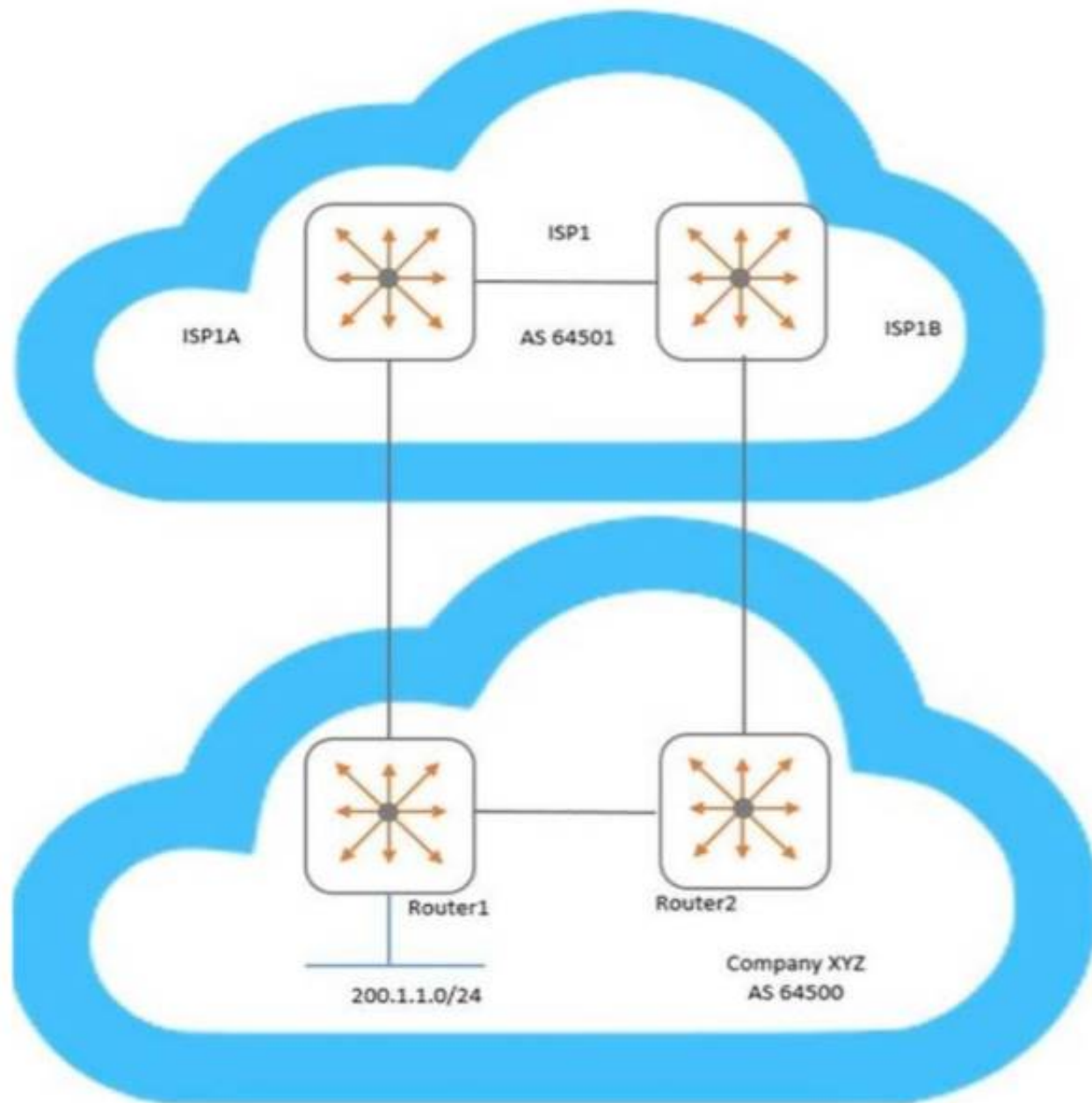
When implementing deficit weighted round robin queuing, what importance does the weight value have?

- A. Prioritizing latency-sensitive traffic
- B. Queue priority in processing traffic
- C. Strict priority queue
- D. Percentage of interface bandwidth

**Answer: B**

#### NEW QUESTION 8

Examine the network topology.



Company XYZ has two connections to a service provider (ISP1). Here is the configuration of Router1:

```
Router1(config)# ip prefix-list AS64500-routes permit 200.1.1.0/24
Router1(config)# route-map To-AS64501 permit seq 10
Router1(config-route-map)# match ip address prefix-list AS64500-routes
Router1(config-route-map)# set metric 100
Router1(config-route-map)# exit
Router1(config)# router bgp 64500
Router1(config-bgp)# address-family ipv4 unicast
Router1(config-bgp-ipv4-uc)# neighbor 192.168.1.1 route-map To-AS64501 out
```

Here is the configuration of Router2:

```
Router2(config)# ip prefix-list AS64500-routes permit 200.1.1.0/24
Router2(config)# route-map To-AS64501 permit seq 10
Router2(config-route-map)# match ip address prefix-list AS64500-routes
Router2(config-route-map)# set metric 200
Router2(config-route-map)# exit
Router2(config)# router bgp 64500
Router2(config-bgp)# address-family ipv4 unicast
Router2(config-bgp-ipv4-uc)# neighbor 192.168.2.1 route-map To-AS64501 out
```

Based on configuration of Router1 and Router2, which BGP metric is being manipulated?

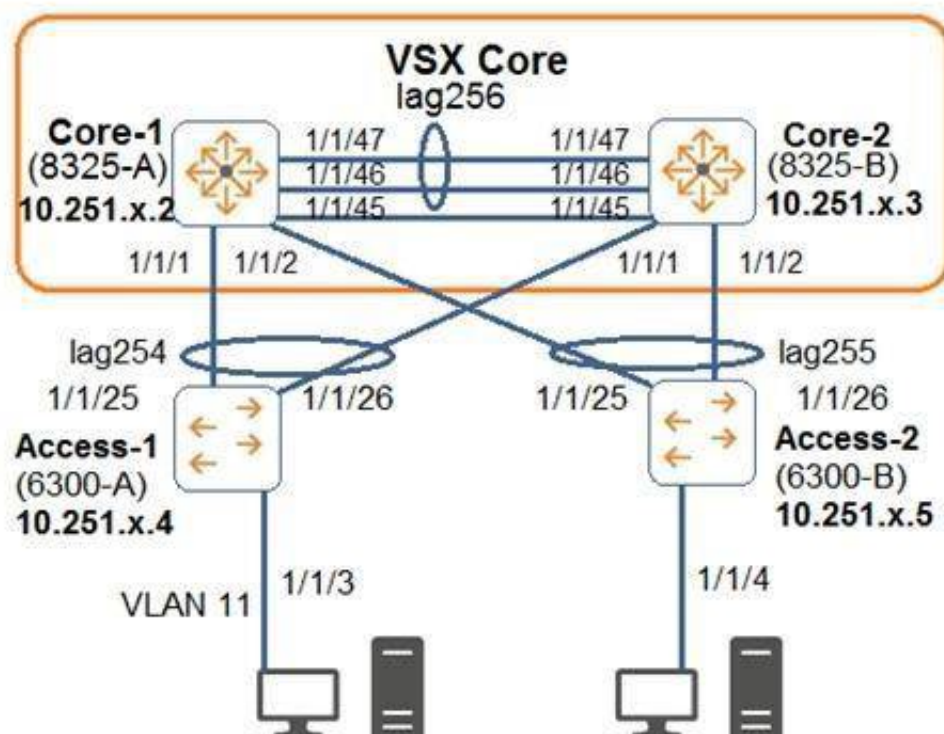
- A. Weight
- B. Multiple exit discriminator
- C. Local preference
- D. AS path length

**Answer: B**

#### NEW QUESTION 9

Examine the attached diagram.





The two PCs are located in VLAN 11 (10.1.11.0/24). Which example defines how to implement active gateway on the VSX core for VLAN 11?

- A. interface vlan 11 active-gateway ip 10.1.11.1 active-gateway mac 02:02:00:00:01:00
- B. interface lag 254 active-gateway vlan 11 ip 10.1.11.1 active-gateway vlan 11 mac 02:02:00:00:01:00
- C. interface lag 254 active-gateway ip 10.1.11.1 active-gateway mac 02:02:00:00:01:00
- D. vsxvrrp group 1

**Answer: A**

#### NEW QUESTION 10

A company has just purchased AOS-CX switches. The company has a free and open-source AAA solution. The company wants to implement access control on the Ethernet ports of the AOS-CX switches.

Which security features can the company implement given the equipment that they are using?

- A. Port-based tunneling
- B. Device fingerprinting
- C. Local user roles
- D. Downloadable user roles

**Answer: D**

#### NEW QUESTION 10

A network engineer is examining NAE graphs from the Dashboard but notices that the time shown in the graph does not represent the current time. The engineer verifies that the AOS-CX switch is configured for NTP and is successfully synchronized. What should be done to fix this issue?

- A. Ensure the engineer's web browser is configured for the same timezone as the AOS-CX switch
- B. Ensure the engineer's PC is synchronized to the same NTP server as the AOS-CX switch
- C. Ensure NetEdit and the AOS-CX switch are synchronized to the same NTP server
- D. Enable trust settings for the AOS-CX switch's SSL certificate

**Answer: C**

#### NEW QUESTION 15

What is a best practice concerning voice traffic and dynamic segmentation on AOS-CX switches?

- A. Controller authentication and user-based tunneling of the voice traffic
- B. Switch authentication and user-based tunneling of the voice traffic
- C. Controller authentication and port-based tunneling of the voice traffic
- D. Switch authentication and local forwarding of the voice traffic

**Answer: C**

#### NEW QUESTION 17

An administrator is defining a VSX LAG on a pair of AOS-CX switches that are defined as primary and secondary. The VSX LAG fails to establish successfully with a remote switch; however, after verification, the remote switch is configured correctly. The administrator narrows down the problem to the configuration on the AOS-CX switches.

What would cause this problem?

- A. Local optimization was not enabled on the VSX LAG
- B. The VSX LAG hash does not match the remote peer
- C. The VSX LAG interfaces are in layer-3 mode
- D. LACP was enabled in active mode on the VSX LAG

**Answer: B**

**NEW QUESTION 19**

An administrator is implementing a downloadable user role solution involving AOS-CX switches. The AAA solution and the AOS-CX switches can successfully authenticate users; however, the role information fails to download to the switches. What policy should be added to an intermediate firewall to allow the downloadable role function to succeed?

- A. Allow TCP 443
- B. Allow UDP 1811
- C. Allow UDP 8211
- D. Allow TCP 22

**Answer:** A

**NEW QUESTION 21**

An administrator implements interim accounting for guest users so that ClearPass can track the amount of bandwidth that guests upload and download. Guests that abuse bandwidth consumption should be disconnected from the network. The administrator configures the following on the AOS-CX access switches:

```
Access1(config)# ip dns host cppm.arubatraining.com 10.254.1.23 vrf mgmt
Access1(config)# radius-server host cppm.arubatraining.com key plaintext aruba123 vrf mgmt
Access1(config)# aaa group server radius cppm
Access1(config-sg)# server cppm.arubatraining.com vrf mgmt
Access1(config-sg)# exit
Access1(config)# aaa accounting port-access start-stop interim 5 group cppm
Access1(config)# radius dyn-authorization client cppm.arubatraining.com secret-key plaintext aruba123 vrf mgmt replay-
protection disable
```

After performing this configuration, the administrator notices that guest users that have exceeded the guest bandwidth limit are not being disconnected. Upon further investigation, Access Tracker in ClearPass indicates a disconnect CoA message is being sent to the AOS-CX switch. What is causing this issue?

- A. RADIUS change of authorization is not enabled on the AOS-CX switch.
- B. Bandwidth consumption of the guests is not being reported by the AOS-CX switch.
- C. NTP is not configured on the AOS-CX switch.
- D. There is a time discrepancy between the AOS-CX switch and ClearPass.

**Answer:** A

**NEW QUESTION 26**

A network has two AOS-CX switches connected to two different service providers. The administrator is concerned about bandwidth consumption on the service provider links and learned that the service providers were using the company as a transit AS. Which feature should the administrator implement to prevent this situation?

- A. Configure route maps and apply them to BGP
- B. Configure the two switches as route reflectors
- C. Configure a classifier policy to disable MED
- D. Configure bi-directional forwarding detection on both switches

**Answer:** A

**NEW QUESTION 28**

A network administrator wants to replace older access layer switches with AOS-CX 6300 switches. Which virtual switching technology can the administrator implement with this solution?

- A. Both VSF and VSX
- B. Only Backplane stacking
- C. Only VSF
- D. Only VSX

**Answer:** C

**NEW QUESTION 30**

An administrator is replacing the current access switches with AOS-CX switches. The access layer switches must authenticate user and networking devices connecting to them. Some devices support no form of authentication, and some support 802.1X. Some ports have a VoIP phone and a PC connected to the same port, where the PC is connected to the data port of the phone and the phone's LAN port is connected to the switch. Which statement is correct about this situation?

- A. 802.1X must be configured to work in fallback mode
- B. Device fingerprinting is required for authentication
- C. The client-limit setting for port access needs to be changed
- D. Device mode should be implemented

**Answer:** C

**NEW QUESTION 34**

How should a network administrator add NAE scripts and implement NAE agents that will run on an AOS-CX switch?

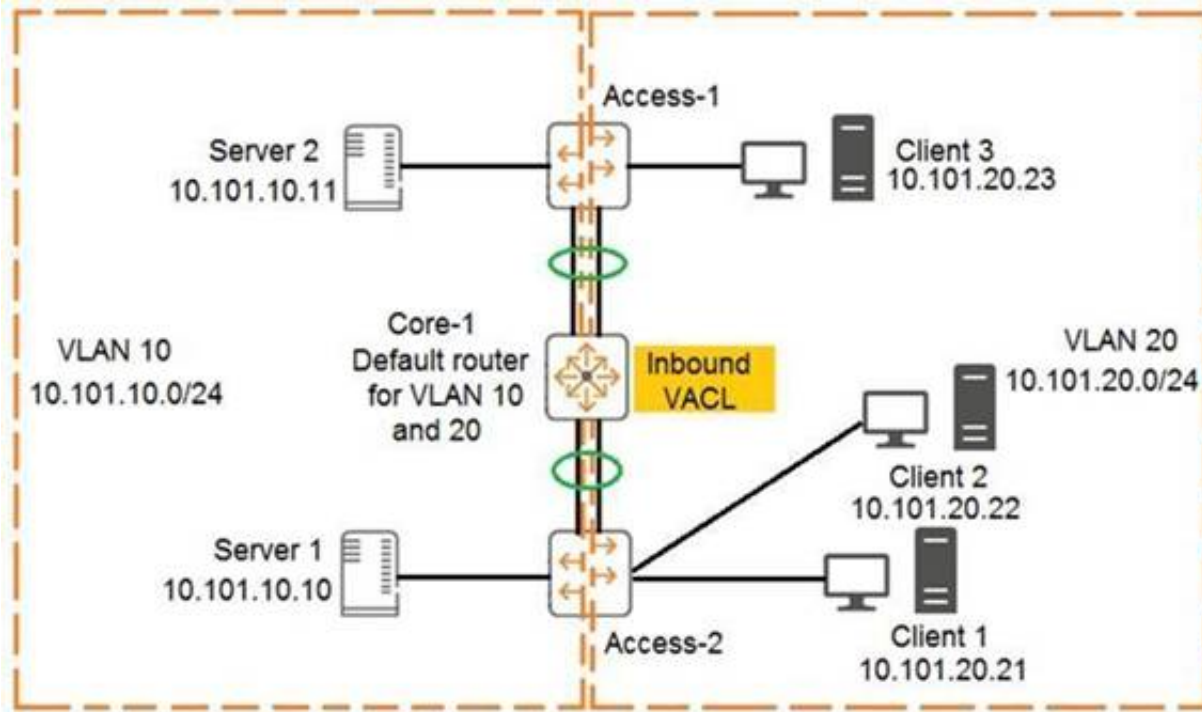
- A. Use the web interface of the NetEdit server
- B. Use the web interface of the AOS-CX switch
- C. Use the web interface of Aruba Central

D. Use the CLI of the AOS-CX switch

**Answer: B**

#### NEW QUESTION 39

Examine the network exhibit:



The ACL configuration defined on Core-1 is as follows:

```
Core-1(config)# access-list ip example
Core-1(config-acl-ip)# permit ip 10.101.20.21/32 any eq 23
Core-1(config-acl-ip)# permit ip 10.101.20.21/32 eq 23 any
Core-1(config-acl-ip)# exit
Core-1(config)# vlan 20
Core-1(config-if)# apply access-list example in
```

If telnet was being used, which device connection would be permitted and functional in both directions? (Choose two.)

- A. Client 3 to Client 2
- B. Client 1 to Client 2
- C. Server 2 to Client 2
- D. Server 1 to Client 1
- E. Client 1 to Client 3

**Answer: BD**

#### NEW QUESTION 42

What is the correct way of associating a VRF instance to either a VLAN or an interface?

- A. Switch(config)# interface <interface-ID>Switch(config-if)# vlan access <VLAN-ID> vrf attach <vrf-name>
- B. Switch(config)# vlan <VLAN-ID> vrf attach < vrf-name >
- C. Switch(config)# vlan <VLAN-ID>Switch(config-vlan-<VLAN-ID># vrf attach < vrf-name >
- D. Switch(config)# vlan <VLAN-ID> vrf < vrf-name >

**Answer: C**

#### NEW QUESTION 46

What is correct regarding policy-based routing?

- A. Policies can only be applied to routed interfaces.
- B. Policies can be applied inbound and outbound.
- C. Monitoring of policy interfaces occurs every 60 seconds.
- D. Policy actions include routing permitting or dropping traffic.

**Answer: A**

#### NEW QUESTION 47

Examine the following AOS-CX switch configuration:

```
Switch(config-addgroup-ip)# object-group ip address servers
Switch(config-addgroup-ip)# 10.1.0.100
Switch(config-addgroup-ip)# 10.1.1.100
Switch(config-addgroup-ip)# exit
```

Which access control entries would allow web traffic to the web servers 10.1.0.100 and 10.1.1.100?

- A. permit tcp servers eq 80



- B. permit tcp any 10.1.0.100 0.0.1.0 eq 80
- C. permit tcp any 10.1.0.100/10.1.1.100 eq 80
- D. permit tcp any 10.1.0.100/255.255.254.255 eq 80

**Answer:** B

#### NEW QUESTION 48

A company has an existing wireless solution involving Aruba APs and Mobility controllers running 8.4 code. The solution leverages a third-party AAA solution. The company is replacing existing access switches with AOS-CX 6300 and 6400 switches. The company wants to leverage the same security and firewall policies for both wired and wireless traffic.

Which solution should the company implement?

- A. RADIUS dynamic authorization
- B. Downloadable user roles
- C. IPSec
- D. User-based tunneling

**Answer:** D

#### NEW QUESTION 53

A company is implementing AOS-CX switches at the access layer. The company wants to implement access control for employees and guests.

Which security features will require a ClearPass server to be installed and used by the company?

- A. Downloadable user roles
- B. Dynamic segmentation
- C. User-based tunneling (UBT)
- D. Change of authorization (CoA)

**Answer:** B

#### NEW QUESTION 57

Which protocol does NetEdit use to discover devices in a subnet during the discovery process?

- A. LLDP
- B. ARP
- C. DHCP
- D. ICMP

**Answer:** D

#### NEW QUESTION 58

Examine the AOS-CS switch output:

```
Switch# show aaa authentication port-access interface 1/1/1 client-status
```

```
Port Access Client Status Details
```

```
Client 00:50:56:b1:7a:37, icx-employee
```

```
Session Details
```

```
Port      : 1/1/3
Session Time : 31273s
```

```
Authentication Details
```

```
Status      : dot1x Authenticated
Auth Precedence : dot1x - Authenticated, mac-auth - Not attempted
```

```
Authorization Details
```

```
Role       : aruba_contractor-3044-7
Status     : Applied
```

Based on this output, what is correct?

- A. 802.1X authentication was successful, but MAC authentication is yet to start
- B. 802.1X authentication occurred and downloadable user roles are deployed
- C. A local user role was deployed using a ClearPass solution
- D. Only 802.1X authentication is configured on the port

**Answer:** B

#### NEW QUESTION 62

.....



## Thank You for Trying Our Product

### We offer two products:

1st - We have Practice Tests Software with Actual Exam Questions

2nd - Questions and Answers in PDF Format

### HPE6-A73 Practice Exam Features:

- \* HPE6-A73 Questions and Answers Updated Frequently
- \* HPE6-A73 Practice Questions Verified by Expert Senior Certified Staff
- \* HPE6-A73 Most Realistic Questions that Guarantee you a Pass on Your FirstTry
- \* HPE6-A73 Practice Test Questions in Multiple Choice Formats and Updatesfor 1 Year

**100% Actual & Verified — Instant Download, Please Click**  
**[Order The HPE6-A73 Practice Test Here](#)**