

Exam Questions az-500

Microsoft Azure Security Technologies

<https://www.2passeasy.com/dumps/az-500/>



NEW QUESTION 1

Note: This question is part of a series of questions that present the same scenario. Each question in the series contains a unique solution that might meet the stated goals. Some question sets might have more than one correct solution, while others might not have a correct solution.

After you answer a question in this section, you will NOT be able to return to it. As a result, these questions will not appear in the review screen.

You have an Azure Subscription named Sub1.

You have an Azure Storage account named Sa1 in a resource group named RG1.

Users and applications access the blob service and the file service in Sa1 by using several shared access signatures (SASs) and stored access policies. You discover that unauthorized users accessed both the file service and the blob service.

You need to revoke all access to Sa1. Solution: You generate new SASs. Does this meet the goal?

- A. Yes
- B. No

Answer: B

Explanation:

Instead you should create a new stored access policy.

To revoke a stored access policy, you can either delete it, or rename it by changing the signed identifier. Changing the signed identifier breaks the associations between any existing signatures and the stored access policy. Deleting or renaming the stored access policy immediately affects all of the shared access signatures associated with it.

References:

<https://docs.microsoft.com/en-us/rest/api/storageservices/Establishing-a-Stored-Access-Policy>

NEW QUESTION 2

HOTSPOT

You have an Azure Active Directory (Azure AD) tenant named contoso.com that contains the users shown in the following table.

Name	Member of	Mobile phone	Multi-factor authentication (MFA) status
User1	Group1	123 555 7890	Disabled
User2	Group1, Group2	None	Enabled
User3	Group1	123 555 7891	Required

You create and enforce an Azure AD Identity Protection user risk policy that has the following settings:

• Assignment: Include Group1, Exclude Group2 Conditions: Sign-in risk of Medium and above Access: Allow access, Require password change

For each of the following statements, select Yes if the statement is true. Otherwise, select No.

NOTE: Each correct selection is worth one point.

Hot Area:

Answer Area

Statements	Yes	No
If User1 signs in from an unfamiliar location, he must change his password.	<input type="radio"/>	<input type="radio"/>
If User2 signs in from an anonymous IP address, she must change her password.	<input type="radio"/>	<input type="radio"/>
If User3 signs in from a computer containing malware that is communicating with known bot servers, he must change his password.	<input type="radio"/>	<input type="radio"/>

- A. Mastered
- B. Not Mastered

Answer: A

Explanation:

Box 1: Yes

User1 is member of Group1. Sign in from unfamiliar location is risk level Medium.

Box 2: Yes

User2 is member of Group1. Sign in from anonymous IP address is risk level Medium.

Box 3: No

Sign-ins from IP addresses with suspicious activity is low.

Note:

Sign-in Activity	Risk Level
Users with leaked credentials	High
Sign-ins from anonymous IP addresses	Medium
Impossible travel to atypical locations	Medium
Sign-ins from infected devices	Medium
Sign-ins from IP addresses with suspicious activity	Low
Sign-ins from unfamiliar locations	Medium

- Azure AD Identity protection can detect six types of suspicious sign-in activities: Users with leaked credentials
- Sign-ins from anonymous IP addresses Impossible travel to atypical locations Sign-ins from infected devices
- Sign-ins from IP addresses with suspicious activity Sign-ins from unfamiliar locations

These six types of events are categorized in to 3 levels of risks – High, Medium & Low: References:

<http://www.rebeladmin.com/2018/09/step-step-guide-configure-risk-based-azure-conditional-access-policies/>

NEW QUESTION 3

DRAG DROP

You need to configure an access review. The review will be assigned to a new collection of reviews and reviewed by resource owners.

Which three actions should you perform in sequence? To answer, move the appropriate actions from the list of actions to the answer area and arrange them in the correct order.

Select and Place:

Actions

Create an access review program.

Set Reviewers to Selected users.

Create an access review audit.

Create an access review control.

Set Reviewers to Group owners.

Set Reviewers to Members.

Answer Area

⬅
➡

⬆

⬇

- A. Mastered
 B. Not Mastered

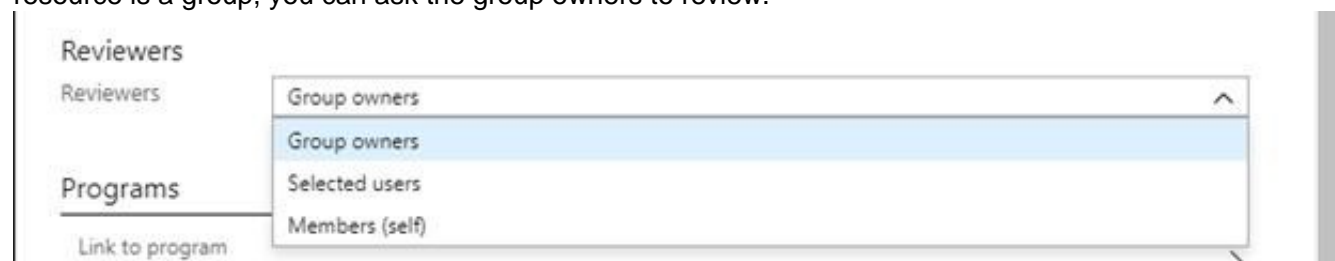
Answer: A

Explanation:

Step 1: Create an access review program Step 2: Create an access review control

Step 3: Set Reviewers to Group owners

In the Reviewers section, select either one or more people to review all the users in scope. Or you can select to have the members review their own access. If the resource is a group, you can ask the group owners to review.



References:

<https://docs.microsoft.com/en-us/azure/active-directory/governance/create-access-review>

<https://docs.microsoft.com/en-us/azure/active-directory/governance/manage-programs-controls>

NEW QUESTION 4

HOTSPOT

Your company has two offices in Seattle and New York. Each office connects to the Internet by using a NAT device. The offices use the IP addresses shown in the

following table.

Location	IP address space	Public NAT segment
Seattle	10.10.0.0/16	190.15.1.0/24
New York	172.16.0.0/16	194.25.2.0/24

The company has an Azure Active Directory (Azure AD) tenant named contoso.com. The tenant contains the users shown in the following table.

Name	Multi-factor authentication (MFA) status
User1	Enabled
User2	Enforced

The MFA service settings are configured as shown in the exhibit. (Click the Exhibit tab.)

trusted ips [\(learn more\)](#)

☒ Skip multi-factor authentication for requests from federated users on my intranet

Skip multi-factor authentication for requests from following range of IP address subnets

10.10.0.0/16
194.25.2.0/24

verification options [\(learn more\)](#)

Methods available to users:

☒ Call to phone

☒ Text message to phone

For each of the following statements, select Yes if the statement is true. Otherwise, select No.

NOTE: Each correct selection is worth one point.

Hot Area:

Answer Area

Yes

No

If User1 signs in to Azure from a device that uses an IP address of 134.18.14.10, User1 must be authenticated by using a phone.

☐

☐

If User2 signs in to Azure from a device in the Seattle office, User2 must be authenticated by using the Microsoft Authenticator app.

☐

☐

If User2 signs in to Azure from a device in the New York office, User1 must be authenticated by using a phone

☐

☐

A. Mastered

B. Not Mastered

Answer: A

Explanation:

Box 2: No

Use of Microsoft Authenticator is not required.

Note: Microsoft Authenticator is a multifactor app for mobile devices that generates time-based codes used during the Two-Step Verification process. Box 3: No

The New York IP address subnet is included in the "skip multi-factor authentication for request.

References:

<https://www.cayosoft.com/difference-enabling-enforcing-mfa/>

NEW QUESTION 5

You have an Azure subscription.

You create an Azure web app named Contoso1812 that uses an S1 App service plan.

You create a DNS record for www.contoso.com that points to the IP address of Contoso1812.

You need to ensure that users can access Contoso1812 by using the https://www.contoso.com URL. Which two actions should you perform? Each correct answer presents part of the solution.

NOTE: Each correct selection is worth one point.

A. Turn on the system-assigned managed identity for Contoso1812.

B. Add a hostname to Contoso1812.

C. Scale out the App Service plan of Contoso1812.

D. Add a deployment slot to Contoso1812.

E. Scale up the App Service plan of Contoso1812.

Answer: BE

Explanation:

B: You can configure Azure DNS to host a custom domain for your web apps. For example, you can create an Azure web app and have your users access it using either www.contoso.com or contoso.com as a fully qualified domain name (FQDN).

To do this, you have to create three records:

A root "A" record pointing to contoso.com A root "TXT" record for verification

A "CNAME" record for the [www](https://www.contoso.com) name that points to the A record

E: To map a custom DNS name to a web app, the web app's App Service plan must be a paid tier (Shared, Basic, Standard, Premium or Consumption for Azure Functions). I

Scale up the App Service plan: Select any of the non-free tiers (D1, B1, B2, B3, or any tier in the Production category). References:

<https://docs.microsoft.com/en-us/azure/dns/dns-web-sites-custom-domain>

Testlet 1

This is a case study. Case studies are not timed separately. You can use as much exam time as you would like to complete each case. However, there may be additional case studies and sections on this exam. You must manage your time to ensure that you are able to complete all questions included on this exam in the time provided.

To answer the questions included in a case study, you will need to reference information that is provided in the case study. Case studies might contain exhibits and other resources that provide more information about the scenario that is described in the case study. Each question is independent of the other question on this case study.

At the end of this case study, a review screen will appear. This screen allows you to review your answers and to make changes before you move to the next sections of the exam. After you begin a new section, you cannot return to this section.

To start the case study

To display the first question on this case study, click the Next button. Use the buttons in the left pane to explore the content of the case study before you answer the questions. Clicking these buttons displays information such as business requirements, existing environment, and problem statements. If the case study has an All Information tab, note that the information displayed is identical to the information displayed on the subsequent tabs. When you are ready to answer a question, click the Question button to return to the question.

Overview

Litware, Inc. is a digital media company that has 500 employees in the Chicago area and 20 employees in the San Francisco area.

Existing Environment

Litware has an Azure subscription named Sub1 that has a subscription ID of 43894a43-17c2-4a39-8cfc-3540c2653ef4.

Sub1 is associated to an Azure Active Directory (Azure AD) tenant named litwareinc.com. The tenant contains the user objects and the device objects of all the Litware employees and their devices. Each user is assigned an Azure AD Premium P2 license. Azure AD Privileged Identity Management (PIM) is activated.

The tenant contains the groups shown in the following table.

Name	Type	Description
Group1	Security group	A group that has the Dynamic User membership type, contains all the San Francisco users, and provides access to many Azure AD applications and Azure resources.
Group2	Security group	A group that has the Dynamic User membership type and contains the Chicago IT team

The Azure subscription contains the objects shown in the following table.

Name	Type	Description
VNet1	Virtual network	VNet1 is a virtual network that contains security-sensitive IT resources. VNet1 contains three subnets named Subnet0, Subnet1, and AzureFirewallSubnet.
VM0	Virtual machine	VM0 is an Azure virtual machine that runs Windows Server 2016, connects to Subnet0, and has just in time (JIT) VM access configured.
VM1	Virtual machine	VM1 is an Azure virtual machine that runs Windows Server 2016 and connects to Subnet0.
SQLDB1	Azure SQL Database	SQLDB1 is an Azure SQL database on a SQL Database server named LitwareSQLServer1.
WebApp1	Web app	WebApp1 is an Azure web app that is accessible by using https://litwareinc.com and http://www.litwareinc.com .
Resource Group1	Resource group	Resource Group1 is a resource group that contains VNet1, VM0, and VM1.
Resource Group2	Resource group	Resource Group2 is a resource group that contains shared IT resources.

Azure Security Center is set to the Free tier.

Planned changes

Litware plans to deploy the Azure resources shown in the following table.

Name	Type	Description
Firewall1	Azure Firewall	An Azure firewall on VNet1.
RT1	Route table	A route table that will contain a route pointing to Firewall1 as the default gateway and will be assigned to Subnet0.
AKS1	Azure Kubernetes Service (AKS)	A managed AKS cluster

Litware identifies the following identity and access requirements:

- _ All San Francisco users and their devices must be members of Group1.
- _ The members of Group2 must be assigned the Contributor role to Resource Group2 by using a permanent eligible assignment.
- _ Users must be prevented from registering applications in Azure AD and from consenting to applications that access company information on the users' behalf.

Platform Protection Requirements

Litware identifies the following platform protection requirements:

- _ Microsoft Antimalware must be installed on the virtual machines in Resource Group1.
- _ The members of Group2 must be assigned the Azure Kubernetes Service Cluster Admin Role. Azure AD users must be to authenticate to AKS1 by using their Azure AD credentials.
- _ Following the implementation of the planned changes, the IT team must be able to connect to VM0 by using JIT VM access.
- _ A new custom RBAC role named Role1 must be used to delegate the administration of the managed disks in Resource Group1. Role1 must be available only for Resource Group1.

Security Operations Requirements

Litware must be able to customize the operating system security configurations in Azure Security Center.

NEW QUESTION 6

HOTSPOT

You are evaluating the security of the network communication between the virtual machines in Sub2. For each of the following statements, select Yes if the statement is true. Otherwise, select No. NOTE: Each correct selection is worth one point.

Hot Area:

Answer Area

Statements	Yes	No
From VM1, you can successfully ping the public IP address of VM2.	<input type="radio"/>	<input type="radio"/>
From VM1, you can successfully ping the private IP address of VM3.	<input type="radio"/>	<input type="radio"/>
From VM1, you can successfully ping the public IP address of VM5.	<input type="radio"/>	<input type="radio"/>

- A. Mastered
- B. Not Mastered

Answer: A

Explanation:

Box 1: Yes

NSG1 has the inbound security rules shown in the following table.

Priority	Port	Protocol	Source	Destination	Action
65000	Any	Any	VirtualNetwork	VirtualNetwork	Allow
65001	Any	Any	AzureLoadBalancer	Any	Allow
65500	Any	Any	Any	Any	Deny

NSG2 has the inbound security rules shown in the following table.

Priority	Port	Protocol	Source	Destination	Action
100	80	TCP	Internet	VirtualNetwork	Allow
65000	Any	Any	VirtualNetwork	VirtualNetwork	Allow
65001	Any	Any	AzureLoadBalancer	Any	Allow
65500	Any	Any	Any	Any	Deny

Box 2: Yes

Box 3: No Note:

Sub2 contains the virtual machines shown in the following table.

Name	Network interface	Application security group	Connected to
VM1	NIC1	ASG1	Subnet1.1
VM2	NIC2	ASG2	Subnet1.1
VM3	NIC3	None	Subnet1.2
VM4	NIC4	ASG1	Subnet1.3
VM5	NIC5	None	Subnet2.1

Name	Subnet
VNetwork1	Subnet1.1, Subnet1.2 and Subnet1.3
VNetwork2	Subnet2.1

Sub2 contains the network security groups (NSGs) shown in the following table.

Name	Associated to
NSG1	NIC2
NSG2	Subnet1.1
NSG3	Subnet1.3
NSG4	Subnet2.1

Question Set 3

NEW QUESTION 7

You have Azure Resource Manager templates that you use to deploy Azure virtual machines.

You need to disable unused Windows features automatically as instances of the virtual machines are provisioned. What should you use?

- A. device compliance policies in Microsoft Intune
- B. Azure Automation State Configuration
- C. application security groups
- D. Azure Advisor

Answer: B

Explanation:

You can use Azure Automation State Configuration to manage Azure VMs (both Classic and Resource Manager), on-premises VMs, Linux machines, AWS VMs, and on-premises physical machines.

Note: Azure Automation State Configuration provides a DSC pull server similar to the Windows Feature DSC-Service so that target nodes automatically receive configurations, conform to the desired state, and report back on their compliance. The built-in pull server in Azure Automation eliminates the need to set up and maintain your own pull server. Azure Automation can target virtual or physical Windows or Linux machines, in the cloud or on-premises.

References:

<https://docs.microsoft.com/en-us/azure/automation/automation-dsc-getting-started>

NEW QUESTION 8

HOTSPOT

You have an Azure subscription that contains the virtual machines shown in the following table.

Name	Resource group	Status
VM1	RG1	Stopped (Deallocated)
VM2	RG2	Stopped (Deallocated)

You create the Azure policies shown in the following table.

Policy definition	Resource type	Scope
Not allowed resource types	virtualMachines	RG1
Allowed resource types	virtualMachines	RG2

You create the resource locks shown in the following table.

Name	Type	Created on
Lock1	Read-only	VM1
Lock2	Read-only	RG2

For each of the following statements, select Yes if the statement is true. Otherwise, select No.

NOTE: Each correct selection is worth one point.

Hot Area:

Answer Area

Statements	Yes	No
You can start VM1.	<input type="radio"/>	<input type="radio"/>
You can start VM2.	<input type="radio"/>	<input type="radio"/>
You can create a virtual machine in RG2.	<input type="radio"/>	<input type="radio"/>

- A. Mastered
B. Not Mastered

Answer: A

Explanation:

Answer Area

Statements	Yes	No
You can start VM1.	<input type="radio"/>	<input checked="" type="radio"/>
You can start VM2.	<input checked="" type="radio"/>	<input type="radio"/>
You can create a virtual machine in RG2.	<input checked="" type="radio"/>	<input type="radio"/>

References:
<https://docs.microsoft.com/en-us/azure/governance/blueprints/concepts/resource-locking>

NEW QUESTION 9

HOTSPOT

You have Azure virtual machines that have Update Management enabled. The virtual machines are configured as shown in the following table.

Name	Operating system	Region	Resource group
VM1	Windows Server 2012	East US	RG1
VM2	Windows Server 2012 R2	West US	RG1
VM3	Windows Server 2016	West US	RG2
VM4	Ubuntu Server 18.04 LTS	West US	RG2
VM5	Red Hat Enterprise Linux 7.4	East US	RG1
VM6	CentOS 7.5	East US	RG1

You schedule two update deployments named Update1 and Update2. Update1 updates VM3. Update2 updates VM6.
Which additional virtual machines can be updated by using Update1 and Update2? To answer, select the appropriate options in the answer area.
NOTE: Each correct selection is worth one point.
Hot Area:

Answer Area

Update1:

▼

VM2 only

VM4 only

VM1 and VM2 only

VM1, VM2, VM4, VM5, and VM6

Update2:

▼

VM5 only

VM1 and VM5 only

VM4 and VM5 only

VM1, VM2, and VM5 only

VM1, VM2, VM3, VM4, and VM5

- A. Mastered
- B. Not Mastered

Answer: A

Explanation:

Update1: VM1 and VM2 only
VM3: Windows Server 2016 West US RG2
Update2: VM4 and VM5 only VM6: CentOS 7.5 East US RG1
For Linux, the machine must have access to an update repository. The update repository can be private or public. References:
<https://docs.microsoft.com/en-us/azure/automation/automation-update-management>

NEW QUESTION 10

HOTSPOT
You have an Azure key vault.
You need to delegate administrative access to the key vault to meet the following requirements:
_ Provide a user named User1 with the ability to set advanced access policies for the key vault. Provide a user named User2 with the ability to add and delete certificates in the key vault. Use the principle of least privilege.
What should you use to assign access to each user? To answer, select the appropriate options in the answer area.
NOTE: Each correct selection is worth one point.
Hot Area:

Answer Area

User1:

▼

A key vault access policy

Azure Information Protection

Azure Policy

Managed identities for Azure resources

RBAC

User2:

▼

A key vault access policy

Azure Information Protection

Azure Policy

Managed identities for Azure resources

RBAC

- A. Mastered
- B. Not Mastered

Answer: A

Explanation:

User1: RBAC

_ RBAC is used as the Key Vault access control mechanism for the management plane. It would allow a user with the proper identity to: set Key Vault access policies

_ create, read, update, and delete key vaults set Key Vault tags

Note: Role-based access control (RBAC) is a system that provides fine-grained access management of Azure resources. Using RBAC, you can segregate duties within your team and grant only the amount of access to users that they need to perform their jobs.

User2: A key vault access policy

A key vault access policy is the access control mechanism to get access to the key vault data plane. Key Vault access policies grant permissions separately to keys, secrets, and certificates.

References:

<https://docs.microsoft.com/en-us/azure/key-vault/key-vault-secure-your-key-vault>

NEW QUESTION 10

You have an Azure virtual machines shown in the following table.

Name	Operating system	Region	Resource group
VM1	Windows Server 2012	East US	RG1
VM2	Windows Server 2012 R2	West Europe	RG1
VM3	Windows Server 2016	West Europe	RG2
VM4	Red Hat Enterprise Linux 7.4	East US	RG2

You create an Azure Log Analytics workspace named Analytics1 in RG1 in the East US region. Which virtual machines can be enrolled in Analytics1?

- A. VM1 only
- B. VM1, VM2, and VM3 only
- C. VM1, VM2, VM3, and VM4
- D. VM1 and VM4 only

Answer: A

Explanation:

Note: Create a workspace

_ In the Azure portal, click All services. In the list of resources, type Log Analytics. As you begin typing, the list filters based on your input. Select Log Analytics.

Click Create, and then select choices for the following items:

Provide a name for the new Log Analytics workspace, such as DefaultLAWorkspace. OMS workspaces are now referred to as Log Analytics workspaces. Select a Subscription to link to by selecting from the drop-down list if the default selected is not appropriate.

For Resource Group, select an existing resource group that contains one or more Azure virtual machines.

Select the Location your VMs are deployed to. For additional information, see which regions Log Analytics is available in. Incorrect Answers:

B, C: A Log Analytics workspace provides a geographic location for data storage. VM2 and VM3 are at a different location.

D: VM4 is a different resource group. References:

<https://docs.microsoft.com/en-us/azure/azure-monitor/platform/manage-access>

NEW QUESTION 12

You are testing an Azure Kubernetes Service (AKS) cluster. The cluster is configured as shown in the exhibit. (Click the Exhibit tab.)

BASICS

Subscription	Microsoft Azure Sponsorship
Resource group	AzureBackupRG_eastus2_1
Region	East US
Kubernetes cluster name	akscluster2
Kubernetes version	1.1 1.5
DNS name prefix	akscluster2
Node count	3
Node size	Standard_DS2_v2
Virtual nodes (preview)	Disabled

AUTHENTICATION

Enable RBAC	No
-------------	----

NETWORKING

HTTP application routing	Yes
Network configuration	Basic

MONITORING

Enable container monitoring	No
-----------------------------	----

TAGS

You plan to deploy the cluster to production. You disable HTTP application routing.

You need to implement application routing that will provide reverse proxy and TLS termination for AKS services by using a single IP address. What should you do?

- A. Create an AKS Ingress controller.
- B. Install the container network interface (CNI) plug-in.
- C. Create an Azure Standard Load Balancer.
- D. Create an Azure Basic Load Balancer.

Answer: A

Explanation:

An ingress controller is a piece of software that provides reverse proxy, configurable traffic routing, and TLS termination for Kubernetes services.

References:

<https://docs.microsoft.com/en-us/azure/aks/ingress-tls>

NEW QUESTION 15

HOTSPOT

You assign User8 the Owner role for RG4, RG5, and RG6.

In which resource groups can User8 create virtual networks and NSGs? To answer, select the appropriate options in the answer area.

NOTE: Each correct selection is worth one point.

Hot Area:

Answer Area

User8 can create virtual networks in:

	▼
RG4 only	
RG6 only	
RG4 and RG6 only	
RG4, RG5, and RG6	

User8 can create NSGs in:

	▼
RG4 only	
RG4 and RG5 only	
RG4 and RG6 only	
RG4, RG5, and RG6	

- A. Mastered
- B. Not Mastered

Answer: A

Explanation:

Box 1: RG4 only

Virtual Networks are not allowed for Rg5 and Rg6.

Box 2: Rg4,Rg5, and Rg6 Scenario:

Contoso has two Azure subscriptions named Sub1 and Sub2.

Sub1 contains six resource groups named RG1, RG2, RG3, RG4, RG5, and RG6. You assign User8 the Owner role for RG4, RG5, and RG6

User8 city Sidney, Role:None

Note: A network security group (NSG) contains a list of security rules that allow or deny network traffic to resources connected to Azure Virtual Networks (VNet).

NSGs can be associated to subnets, individual VMs (classic), or individual network interfaces (NIC) attached to VMs (Resource Manager).

References:

<https://docs.microsoft.com/en-us/azure/governance/policy/overview>

NEW QUESTION 17

You have an Azure subscription named Sub1 that is associated to an Azure Active Directory (Azure AD) tenant named contoso.com.

You are assigned the Global administrator role for the tenant. You are responsible for managing Azure Security Center settings. You need to create a custom sensitivity label.

What should you do first?

- A. Create a custom sensitive information type.
- B. Elevate access for global administrators in Azure AD.
- C. Upgrade the pricing tier of the Security Center to Standard.
- D. Enable integration with Microsoft Cloud App Security.

Answer: A

Explanation:

First, you need to create a new sensitive information type because you can't directly modify the default rules.

References:

<https://docs.microsoft.com/en-us/office365/securitycompliance/customize-a-built-in-sensitive-information-type>

NEW QUESTION 19

HOTSPOT

You suspect that users are attempting to sign in to resources to which they have no access.

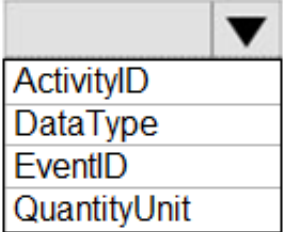
You need to create an Azure Log Analytics query to identify failed user sign-in attempts from the last three days. The results must only show users who had more than five failed sign-in attempts.

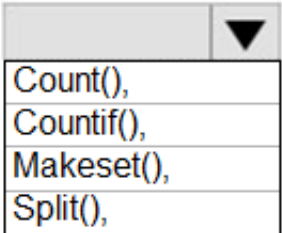
How should you configure the query? To answer, select the appropriate options in the answer area.

NOTE: Each correct selection is worth one point.

Hot Area:

Answer Area

```
let timeframe = 3d;
SecurityEvent
| where TimeGenerated > ago(3d)
| where AccountType == 'User' and  ==4625

| Summarize failed_login_attempts= 

latest_failed_login=arg_max(TimeGenerated by Account
| where failed_login_attempts > 5
```

- A. Mastered
- B. Not Mastered

Answer: A

Explanation:

The following example identifies user accounts that failed to log in more than five times in the last day, and when they last attempted to log in. let timeframe = 1d; SecurityEvent

```
| where TimeGenerated > ago(1d)
| where AccountType == 'User' and EventID == 4625 // 4625 - failed log in
| summarize failed_login_attempts=count(), latest_failed_login=arg_max(TimeGenerated, Account) by Account
| where failed_login_attempts > 5
| project-away Account1
```

References:

<https://docs.microsoft.com/en-us/azure/azure-monitor/log-query/examples>

NEW QUESTION 20

You have an Azure subscription named Sub1.

In Azure Security Center, you have a security playbook named Play1. Play1 is configured to send an email message to a user named User1. You need to modify Play1 to send email messages to a distribution group named Alerts.

What should you use to modify Play1?

- A. Azure DevOps
- B. Azure Application Insights
- C. Azure Monitor
- D. Azure Logic Apps Designer

Answer: D

Explanation:

You can change an existing playbook in Security Center to add an action, or conditions. To do that you just need to click on the name of the playbook that you want to change, in the Playbooks tab, and Logic App Designer opens up.

References:

<https://docs.microsoft.com/en-us/azure/security-center/security-center-playbooks>

NEW QUESTION 24

You create a new Azure subscription.

You need to ensure that you can create custom alert rules in Azure Security Center. Which two actions should you perform? Each correct answer presents part of the solution. NOTE: Each correct selection is worth one point.

- A. Onboard Azure Active Directory (Azure AD) Identity Protection.
- B. Create an Azure Storage account.
- C. Implement Azure Advisor recommendations.
- D. Create an Azure Log Analytics workspace.
- E. Upgrade the pricing tier of Security Center to Standard.

Answer: BD

Explanation:

D: You need write permission in the workspace that you select to store your custom alert.

References:

<https://docs.microsoft.com/en-us/azure/security-center/security-center-custom-alert>

NEW QUESTION 29

You have an Azure subscription named Sub1 that contains an Azure Log Analytics workspace named LAW1.

You have 100 on-premises servers that run Windows Server 2012 R2 and Windows Server 2016. The servers connect to LAW1. LAW1 is configured to collect security-related performance counters from the connected servers.

You need to configure alerts based on the data collected by LAW1. The solution must meet the following requirements:

- _ Alert rules must support dimensions.
- _ The time it takes to generate an alert must be minimized.
- _ Alert notifications must be generated only once when the alert is generated and once when the alert is resolved.

Which signal type should you use when you create the alert rules?

- A. Log
- B. Log (Saved Query)
- C. Metric
- D. Activity Log

Answer: C

Explanation:

Metric alerts in Azure Monitor provide a way to get notified when one of your metrics cross a threshold. Metric alerts work on a range of multi-dimensional platform metrics, custom metrics, Application Insights standard and custom metrics.

Note: Signals are emitted by the target resource and can be of several types. Metric, Activity log, Application Insights, and Log. References:

<https://docs.microsoft.com/en-us/azure/azure-monitor/platform/alerts-metric>

NEW QUESTION 30

You need to configure WebApp1 to meet the data and application requirements.

Which two actions should you perform? Each correct answer presents part of the solution.

NOTE: Each correct selection is worth one point.

- A. Upload a public certificate.
- B. Turn on the HTTPS Only protocol setting.
- C. Set the Minimum TLS Version protocol setting to 1.2.
- D. Change the pricing tier of the App Service plan.
- E. Turn on the Incoming client certificates protocol setting.

Answer: AC

Explanation:

A: To configure Certificates for use in Azure Websites Applications you need to upload a public Certificate.

C: Over time, multiple versions of TLS have been released to mitigate different vulnerabilities. TLS 1.2 is the most current version available for apps running on Azure App Service.

Incorrect Answers:

B: We need support the http url as well.

Note:

WebApp1 is an Azure web app that is accessible by using <https://litwareinc.com> and <http://www.litwareinc.com>.

References:

<https://docs.microsoft.com/en-us/azure/app-service/app-service-web-configure-tls-mutual-auth>

<https://azure.microsoft.com/en-us/updates/app-service-and-functions-hosted-apps-can-now-update-tls-versions/>

NEW QUESTION 35

DRAG DROP

You need to configure SQLDB1 to meet the data and application requirements.

Which three actions should you recommend be performed in sequence? To answer, move the appropriate actions from the list of actions to the answer area and arrange them in the correct order.

Select and Place:

Actions

From the Azure portal, create an Azure AD administrator for LitwareSQLServer1.

In SQLDB1, create contained database users.

Connect to SQLDB1 by using Microsoft SQL Server Management Studio (SSMS).

In Azure AD, create a system-assigned managed identity.

In Azure AD, create a user-assigned managed identity.

Answer Area

⏮

⏭

⏪

⏩

- A. Mastered
 B. Not Mastered

Answer: A

Explanation:

Step 1: Connect to SQLDB1 by using Microsoft SQL Server Management Studio (SSMS)

Step 2: In SQLDB1, create contained database users.

Create a contained user in the database that represents the VM's system-assigned identity.

Step 3: In Azure AD, create a system-assigned managed identity.

A system-assigned identity for a Windows virtual machine (VM) can be used to access an Azure SQL server. Managed Service Identities are automatically managed by Azure and enable you to authenticate to services that support Azure AD authentication, without needing to insert credentials into your code.

References:

<https://docs.microsoft.com/en-us/azure/active-directory/managed-identities-azure-resources/tutorial-windows-vm-access-sql>

Question Set 2

NEW QUESTION 38

From the Azure portal, you are configuring an Azure policy.

You plan to assign policies that use the DeployIfNotExist, AuditIfNotExist, Append, and Deny effects. Which effect requires a managed identity for the assignment?

- A. AuditIfNotExist
 B. Append
 C. DeployIfNotExist
 D. Deny

Answer: C

Explanation:

When Azure Policy runs the template in the deployIfNotExists policy definition, it does so using a managed identity.

References:

<https://docs.microsoft.com/bs-latn-ba/azure/governance/policy/how-to/remediate-resources>

NEW QUESTION 39

HOTSPOT

You have an Azure subscription named Sub1 that is associated to an Azure Active Directory (Azure AD) tenant named contoso.com. You plan to implement an application that will consist of the resources shown in the following table.

Name	Type	Description
CosmosDBAccount1	Azure Cosmos DB account	A Cosmos DB account containing a database Named CosmosDB1 that serves as a back-end tier of the application
WebApp1	Azure web app	A web app configured to serve as the middle tier of the application

Users will authenticate by using their Azure AD user account and access the Cosmos DB account by using resource tokens. You need to identify which tasks will be implemented in CosmosDB1 and WebApp1.

Which task should you identify for each resource? To answer, select the appropriate options in the answer area.

NOTE: Each correct selection is worth one point.

Hot Area:

Answer Area

CosmosDB1: ▼

WebApp1: ▼

- A. Mastered
B. Not Mastered

Answer: A

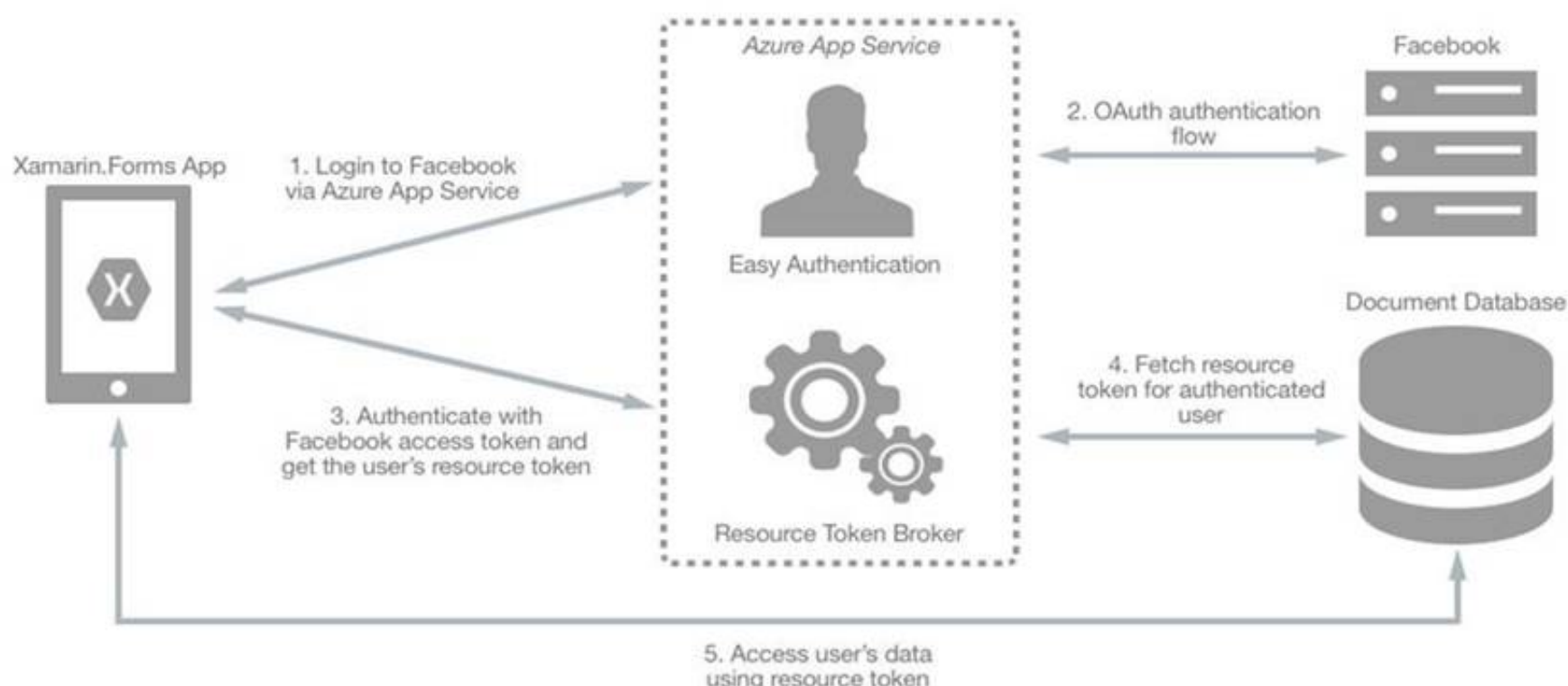
Explanation:

CosmosDB1: Create database users and generate resource tokens.

Azure Cosmos DB resource tokens provide a safe mechanism for allowing clients to read, write, and delete specific resources in an Azure Cosmos DB account according to the granted permissions.

WebApp1: Authenticate Azure AD users and relay resource tokens

A typical approach to requesting, generating, and delivering resource tokens to a mobile application is to use a resource token broker. The following diagram shows a high-level overview of how the sample application uses a resource token broker to manage access to the document database data:



References:

<https://docs.microsoft.com/en-us/xamarin/xamarin-forms/data-cloud/cosmosdb/authentication>

NEW QUESTION 40

HOTSPOT

You need to create an Azure key vault. The solution must ensure that any object deleted from the key vault be retained for 90 days.

How should you complete the command? To answer, select the appropriate options in the answer area.

NOTE: Each correct selection is worth one point.

Hot Area:

Answer Area

```
New-AzureRmKeyVault -VaultName 'KeyVault1' -ResourceGroupName 'RG1'
```

-Location 'East US' ▼ ▼

- A. Mastered
B. Not Mastered

Answer: A

Explanation:

Box 1: -EnablePurgeProtection

If specified, protection against immediate deletion is enabled for this vault; requires soft delete to be enabled as well.

Box 2: -EnableSoftDelete

Specifies that the soft-delete functionality is enabled for this key vault. When soft-delete is enabled, for a grace period, you can recover this key vault and its contents after it is deleted.

References:

<https://docs.microsoft.com/en-us/powershell/module/azurerm.keyvault/new-azurermkeyvault>

NEW QUESTION 41

You have an Azure subscription that contains an Azure key vault named Vault1.

In Vault1, you create a secret named Secret1.

An application developer registers an application in Azure Active Directory (Azure AD). You need to ensure that the application can use Secret1.

What should you do?

- A. In Azure AD, create a role.
- B. In Azure Key Vault, create a key.
- C. In Azure Key Vault, create an access policy.
- D. In Azure AD, enable Azure AD Application Proxy.

Answer: A

Explanation:

Azure Key Vault provides a way to securely store credentials and other keys and secrets, but your code needs to authenticate to Key Vault to retrieve them.

Managed identities for Azure resources overview makes solving this problem simpler, by giving Azure services an automatically managed identity in Azure Active Directory (Azure AD). You can use this identity to authenticate to any service that supports Azure AD authentication, including Key Vault, without having any credentials in your code.

Example: How a system-assigned managed identity works with an Azure VM

After the VM has an identity, use the service principal information to grant the VM access to Azure resources. To call Azure Resource Manager, use role-based access control (RBAC) in Azure AD to assign the appropriate role to the VM service principal. To call Key Vault, grant your code access to the specific secret or key in Key Vault.

References:

<https://docs.microsoft.com/en-us/azure/key-vault/quick-create-net>

<https://docs.microsoft.com/en-us/azure/active-directory/managed-identities-azure-resources/overview>

NEW QUESTION 44

You have a hybrid configuration of Azure Active Directory (Azure AD).

All users have computers that run Windows 10 and are hybrid Azure AD joined.

You have an Azure SQL database that is configured to support Azure AD authentication.

Database developers must connect to the SQL database by using Microsoft SQL Server Management Studio (SSMS) and authenticate by using their on-premises Active Directory account.

You need to tell the developers which authentication method to use to connect to the SQL database from SSMS. The solution must minimize authentication prompts.

Which authentication method should you instruct the developers to use?

- A. SQL Login
- B. Active Directory – Universal with MFA support
- C. Active Directory – Integrated
- D. Active Directory – Password

Answer: C

Explanation:

Azure AD can be the initial Azure AD managed domain. Azure AD can also be an on-premises Active Directory Domain Services that is federated with the Azure AD.

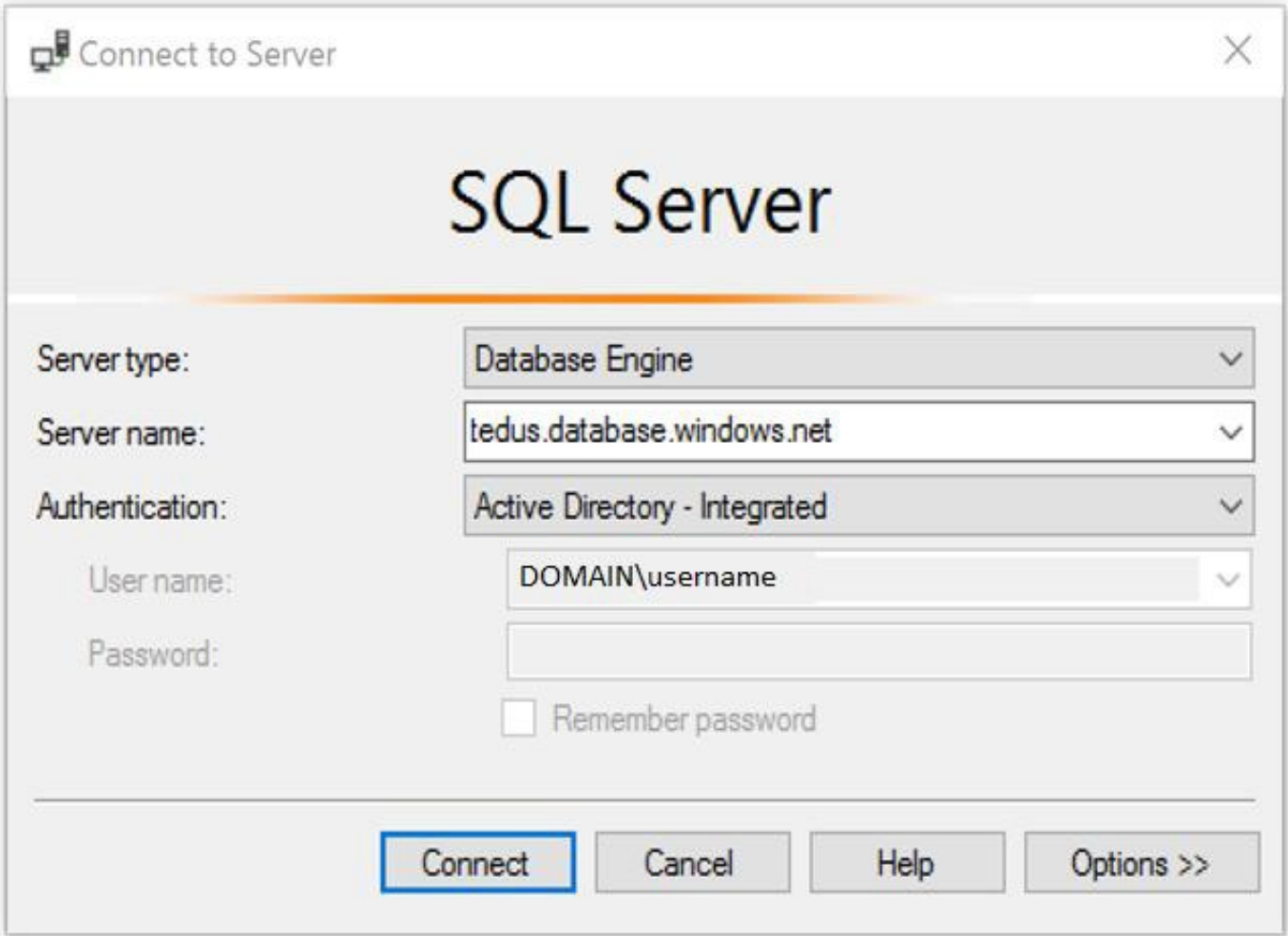
Using an Azure AD identity to connect using SSMS or SSDT

The following procedures show you how to connect to a SQL database with an Azure AD identity using SQL Server Management Studio or SQL Server Database Tools.

Active Directory integrated authentication

Use this method if you are logged in to Windows using your Azure Active Directory credentials from a federated domain.

1. Start Management Studio or Data Tools and in the Connect to Server (or Connect to Database Engine) dialog box, in the Authentication box, select Active Directory - Integrated. No password is needed or can be entered because your existing credentials will be presented for the connection.



2. Select the Options button, and on the Connection Properties page, in the Connect to database box, type the name of the user database you want to connect to. (The AD domain name or tenant ID” option is only supported for Universal with MFA connection options, otherwise it is greyed out.)
References:
<https://github.com/MicrosoftDocs/azure-docs/blob/master/articles/sql-database/sql-database-aad-authentication-configure.md>

NEW QUESTION 48

DRAG DROP

You have an Azure subscription named Sub1 that contains an Azure Storage account named Contosostorage1 and an Azure key vault named Contosokeyvault1. You plan to create an Azure Automation runbook that will rotate the keys of Contosostorage1 and store them in Contosokeyvault1. You need to implement prerequisites to ensure that you can implement the runbook. Which three actions should you perform in sequence? To answer, move the appropriate actions from the list of actions to the answer area and arrange them in the correct order.
Select and Place:

Actions

Run Set-AzureRmKeyVaultAccessPolicy

Create an Azure Automation account.

Import PowerShell modules to the Azure Automation account.

Create a user-assigned managed identity.

Create a connection resource in the Azure Automation account.

Answer Area

⏪

⏩

⏴

⏵

- A. Mastered
- B. Not Mastered

Answer: A

Explanation:

Step 1: Create an Azure Automation account
Runbooks live within the Azure Automation account and can execute PowerShell scripts.
Step 2: Import PowerShell modules to the Azure Automation account
Under ‘Assets’ from the Azure Automation account Resources section select ‘to add in Modules to the runbook. To execute key vault cmdlets in the runbook, we need to add AzureRM.profile and AzureRM.key vault.
Step 3: Create a connection resource in the Azure Automation account
You can use the sample code below, taken from the AzureAutomationTutorialScript example runbook, to authenticate using the Run As account to manage Resource Manager resources with your runbooks. The AzureRunAsConnection is a connection asset automatically created when we created ‘run as accounts’ above. This can be found under Assets -> Connections. After the authentication code, run the same code above to get all the keys from the vault.
\$connectionName = "AzureRunAsConnection" try
{
Get the connection "AzureRunAsConnection "


```
$servicePrincipalConnection=Get-AutomationConnection -Name $connectionName  
"Logging in to Azure..." Add-AzureRmAccount `   
-ServicePrincipal `   
-TenantId $servicePrincipalConnection.TenantId `   
-ApplicationId $servicePrincipalConnection.ApplicationId `   
-CertificateThumbprint $servicePrincipalConnection.CertificateThumbprint  
}  
References:  
https://www.rahulpnath.com/blog/accessing-azure-key-vault-from-azure-runbook/
```

NEW QUESTION 51

.....

THANKS FOR TRYING THE DEMO OF OUR PRODUCT

Visit Our Site to Purchase the Full Set of Actual az-500 Exam Questions With Answers.

We Also Provide Practice Exam Software That Simulates Real Exam Environment And Has Many Self-Assessment Features. Order the az-500 Product From:

<https://www.2passeasy.com/dumps/az-500/>

Money Back Guarantee

az-500 Practice Exam Features:

- * az-500 Questions and Answers Updated Frequently
- * az-500 Practice Questions Verified by Expert Senior Certified Staff
- * az-500 Most Realistic Questions that Guarantee you a Pass on Your FirstTry
- * az-500 Practice Test Questions in Multiple Choice Formats and Updatesfor 1 Year