

mb-300 Dumps

Microsoft Dynamics 365 Unified Operations Core

<https://www.certleader.com/mb-300-dumps.html>



NEW QUESTION 1

- (Exam Topic 1)

You need to detail a business process for streaming the customer editing process for account representatives. Which two actions should you perform? Each correct answer presents a partial solution.

NOTE: Each correct selection is worth one point.

- A. Navigate to the All Customer form for the Accounts receivable module and select the appropriate customer account.
- B. Navigate to the account representative's workspace and select the appropriate customer account.
- C. Select the form and then select Hide.
- D. Hide Invoice account from the view.

Answer: AD

NEW QUESTION 2

- (Exam Topic 1)

You need to configure check printing for Munson's.

Which four actions should you perform in sequence? To answer, move the appropriate actions from the list of actions to the answer area and arrange them in the correct order.

Actions

Install the Document Routing Agent on the client machines where users will be printing the checks.

Navigate to the legal entity and enable the printer.

Select the legal entities for the printer to be available.

Discover and add the check printer from the Document Routing Agent.

Enter the Dynamics 365 Finance and Operations configurations in the Document Routing Agent.

Discover and add the check printer to the system from Dynamics 365 Finance and Operations.

Install the Document Routing Agent on the corporate print server.

Register the Document Routing Agent with Dynamics 365 Finance and Operations.

Answer Area

⏪

⏩

⏴

⏵

- A. Mastered
- B. Not Mastered

Answer: A

Explanation:

Reference:

<https://docs.microsoft.com/en-us/dynamics365/unified-operations/dev-itpro/analytics/install-document-routing-a>

NEW QUESTION 3

- (Exam Topic 1)

You need to connect the Excel instance to the Relecloud production instance. What should you do?

- A. Set the server URL to Microsoft.Dynamics.Platform.Integration.Office.UrlViewerApplet.
- B. Set the server URL to <https://relecloud-prod.operations.dynamics.com>.
- C. Set the App Correlation ID to <https://relecloud-prod.operations.dynamics.com>.
- D. Set the App Correlation ID to the App Id in the Dynamics 365 Office App Parameters.

Answer: B

Explanation:

Reference:

<https://docs.microsoft.com/en-us/dynamics365/unified-operations/dev-itpro/office-integration/use-excel-add-in>

NEW QUESTION 4

- (Exam Topic 1)

You need to determine why the sales associate is not able to see Munson's in the search results. What is the cause of the issue?

- A. The search criteria is searching for only names that are exactly 'pickles'.
- B. The search criteria is only able to search by the shortened search name of the customer.
- C. The search criteria is searching for all customer names that start with 'pickles'.
- D. The search criteria is case sensitive.

Answer: C

Explanation:

Reference:

<https://docs.microsoft.com/en-us/dynamics365/customer-engagement/basics/search-records>

NEW QUESTION 5

- (Exam Topic 2)

You plan the migration from Dynamics AX 2012 R3 to a Dynamics 365 for Finance and Operations environment. You will be using Lifecycle Services (LCS) and the tools provided with it.

You need to clean up data, review and configure SQL optimizations, and identify deprecated features in your code. What tool should you use?

- A. Microsoft Azure DevOps
- B. Upgrade analyzer
- C. Data Import/Export Framework (DIXF)
- D. Code upgrade estimation tools

Answer: B

NEW QUESTION 6

- (Exam Topic 2)

You are the project owner in a Lifecycle Services (LCS) project to deploy a Dynamics 365 for Finance and Operations environment.

The system must be configured to enable testers to record processes that become business processes and test plans.

You need to configure the system to generate User Acceptance Testing (UAT) test plans.

In which order should you perform the actions? To answer, move all actions from the list of actions to the answer area and arrange them in the correct order.

Actions		Answer Area
Create business process libraries in the LCS project.		
Enable Azure DevOps sync.	➤ ➤	
Configure Azure DevOps for the LCS project.		
Configure system administrator help parameters to the LCS project.	⬅ ⬅	
Enable Sync test cases.		

- A. Mastered
- B. Not Mastered

Answer: A

Explanation:

Actions		Answer Area
Create business process libraries in the LCS project.		Create business process libraries in the LCS project.
Enable Azure DevOps sync.		
Configure Azure DevOps for the LCS project.		Configure Azure DevOps for the LCS project.
Configure system administrator help parameters to the LCS project.		Configure system administrator help parameters to the LCS project.
Enable Sync test cases.		Enable Azure DevOps sync.
		Enable Sync test cases.

NEW QUESTION 7

- (Exam Topic 2)

You are a Dynamics 365 for Finance and Operations system administrator.

Data is being migrated from a customized version of a legacy application to Dynamics 365 for Finance and Operations. Some of the fields in the entity are the same, and some are different.

As a starting point, you need to automatically map as many fields as possible within Dynamics 365 for Finance and Operations.

Which feature or tool should you use?

- A. Use the Mapping visualization tool
- B. Generate source mapping
- C. Use the Data task automation tool
- D. Copy configuration data
- E. Use Data templates

Answer: A

Explanation:

References:

<https://docs.microsoft.com/en-us/dynamics365/unified-operations/dev-itpro/data-entities/data-entities-data-pack>

NEW QUESTION 8

- (Exam Topic 2)

You are tasked with enhancing usability in the Dynamics 365 for Finance and Operations deployment for your organization.

Your organization is evaluating different approaches, including using workspaces. You need to identify the goals of using workspaces.

Which goals should you identify? To answer, select the appropriate options in the answer area. NOTE: Each correct selection is worth one point.

Answer Area

Requirement	Functional use
Visibility	Understand the current state of the light task activity to support informed decisions Display deep information supporting complex task execution
Workspace definition	An initial overview for a specific role to increase productivity A view of complex activities requiring interaction across different roles

- A. Mastered
- B. Not Mastered

Answer: A

Explanation:

Answer Area

Requirement	Functional use
Visibility	Understand the current state of the light task activity to support informed decisions Display deep information supporting complex task execution
Workspace definition	An initial overview for a specific role to increase productivity A view of complex activities requiring interaction across different roles

NEW QUESTION 9

- (Exam Topic 2)

A company implements Dynamics 365 for Finance and Operations.

They need additional information and want a subledger to record information for additional reporting rather than customizing all reports.

You need to set up the posting to accommodate the need for a subledger. Which three actions should you take? Each answer presents part of the solution.

- A. Update existing reports to prevent data in the identified area from reporting
- B. Create posting profiles to post to the identified area as needed for the request
- C. Create posting definitions to post to the identified area as needed for the request
- D. Update existing reports to add data in the identified area
- E. Identify an area of the chart of accounts to record to as the subledger

Answer: BDE

NEW QUESTION 10

- (Exam Topic 2)

You are a Dynamics 365 for Finance and Operations system administrator.

A company named Contoso Ltd. is creating a new legal entity that will be similar to an existing legal entity. Team members copy key entities to the new legal entity

using the Data management workspace. They indicate that there were already-configured pieces of data unique to the new legal entity before they ran the Copy into legal entity process.

The data import/export framework settings are listed in the table below:

Setting	Current value
Ignore error	Yes
Create error file	Yes
Remove duplicates	Yes

You need to determine what happened to the already-configured pieces of data. What happened to the data?

- A. Any source legal entity data that already exists in the destination legal entity will be updated.
- B. Any destination legal entity data will be deleted, and the source data will be inserted.
- C. Any source legal entity data that already exists in the destination legal entity will be ignored.
- D. Any source legal entity data that already exists in the destination legal entity will be displayed as an error for user action in the Data management workspace.

Answer: C

NEW QUESTION 10

- (Exam Topic 2)

A company implements Dynamics 365 for Finance and Operations.

You have a requirement that the component data for address structure in the system be available in Portuguese (Brazil).

You need to provide address and contact information purpose with translation. What should you do?

- A. Under Organization administration, on the Global addresses tab, enter the appropriate translation value in the translations form
- B. In User options, set the language preference to Portuguese pt-BR and enter addresses for customers and vendors
- C. Upload files to Dynamics 365 Translation Services (DTS) for conversion
- D. Apply return from Dynamics 365 Translation Services (DTS) to the system by submitting a support ticket

Answer: A

NEW QUESTION 13

- (Exam Topic 2)

A company plans to use Dynamics 365 for Finance and Operations. You need to implement the security architecture.

Which component should you use for each requirement? To answer, select the appropriate security component in the answer area.

NOTE: Each correct selection is worth one point.

Answer Area

Requirement	Security component
Group the security configuration for employees with the same job function.	<div>Security roles</div> <div>Duties</div> <div>Privileges</div> <div>Permissions</div>
Assign check-depositing tasks to a group of people as part of the accounts receivable process.	<div>Security roles</div> <div>Duties</div> <div>Privileges</div> <div>Permissions</div>
Restrict access to a specific table or chart.	<div>Security roles</div> <div>Duties</div> <div>Privileges</div> <div>Permissions</div>

- A. Mastered
- B. Not Mastered

Answer: A

Explanation:

Answer Area

Requirement	Security component
Group the security configuration for employees with the same job function.	<div>Security roles</div> <div>Duties</div> <div>Privileges</div> <div>Permissions</div>
Assign check-depositing tasks to a group of people as part of the accounts receivable process.	<div>Security roles</div> <div>Duties</div> <div>Privileges</div> <div>Permissions</div>
Restrict access to a specific table or chart.	<div>Security roles</div> <div>Duties</div> <div>Privileges</div> <div>Permissions</div>

NEW QUESTION 17

- (Exam Topic 2)

Note: This question is part of a series of questions that present the same scenario. Each question in the series contains a unique solution that might meet the stated goals. Some question sets might have more than one correct solution, while others might not have a correct solution.

After you answer a question in this section, you will NOT be able to return to it. As a result, these questions will not appear in the review screen.

You are a functional consultant who is deploying Dynamics 365 for Finance and Operations. The implementation must:

- ☒ Use an iterative approach
- ☒ Integrate with real-world data

▶ Enforce standards and governance

▶ Implement multiple rounds of feedback

You need to deploy and validate the implementation.

Solution: Use the XPPBP tool to export customizations and scenarios from a development sandbox. Make changes to the sandbox containing users. Deploy from the sandbox to the production environment.

Does the solution meet the goal?

- A. Yes
- B. No

Answer: B

NEW QUESTION 18

- (Exam Topic 2)

You are a Dynamics 365 for Finance and Operations systems administrator.

Your company needs to document and test all possible scenarios for a given implementation. Implementation gaps need to be documented using the tool available for tracking and linking to delivered extensions.

You need to identify the correct tool to accomplish this. What should you use?

- A. APQC Unified Libraries
- B. Shared asset library
- C. Business process modeler (BPM)
- D. Microsoft Azure DevOps

Answer: C

NEW QUESTION 22

- (Exam Topic 2)

You are a Dynamics 365 for Finance and Operations system administrator.

The expense department relies heavily on properly operating workflows. If there is a failure in the workflow, the issue needs to get resolved quickly.

You need to make sure that the system actively tracks the status, so the support team can monitor and take actions against any failures.

What should you do? Each correct answer presents a complete solution.

NOTE: Each correct selection is worth one point.

- A. Set the monitoring category of the Workflow message processing batch job to Workflow.
- B. Set the critical job flag of the Workflow message processing batch job to True.
- C. Set the Ignore task failure flag of the Workflow message processing batch job to False.
- D. Set the batch job named Workflow message processing to send an email when the status of the batch job is Error.
- E. Set the priority field of the Workflow message processing batch job to 1.

Answer: BCD

NEW QUESTION 23

- (Exam Topic 2)

During the implementation planning process, a company decides to migrate various functional data from its legacy systems. These include accounting data, sales data, and purchasing data.

Some functional data elements reference data stored in other tables.

You need to ensure that data types and data elements are imported in the correct order.

In what order should you perform the data migration? To answer, select the appropriate configuration in the answer area.

NOTE: Each correct selection is worth one point.

Answer Area

Sequential order

Data category

Master, reference, transaction
Reference, master, transaction
Transaction, reference, master
Transaction, master, reference

Data entity

Ledger journals, chart of accounts, account structures
Chart of accounts, account structures, ledger journals
Account structures, chart of accounts, ledger journals
Ledger journals, account structures, chart of accounts

- A. Mastered
- B. Not Mastered

Answer: A

Explanation:

Answer Area

Sequential order

Order options

Data category

Master, reference, transaction
Reference, master, transaction
Transaction, reference, master
Transaction, master, reference

Data entity

Ledger journals, chart of accounts, account structures
Chart of accounts, account structures, ledger journals
Account structures, chart of accounts, ledger journals
Ledger journals, account structures, chart of accounts

NEW QUESTION 25

- (Exam Topic 2)

You are a Dynamics 365 for Finance and Operations system administrator for a new implementation. You have a solution that needs to be tested using User Acceptance Testing (UAT). You have created a Business process modeler (BPM) library. You need to validate and support the solution. Which three actions should you perform? Each answer presents part of the solution.

- A. Upload the saved recording to BPM.
- B. Create a new Business process library
- C. Export the task recording to Microsoft Word and upload it to BPM.
- D. Record test cases and save them to BPM.
- E. Create and save a new task recording.

Answer: ABD

NEW QUESTION 29

- (Exam Topic 2)

You receive an error when importing data into the pilot instance. You need to troubleshoot the error. What should you do first?

Answer Area

You receive an error when importing data into the pilot instance. You need to troubleshoot the error. What should you do first?

Set the entity order to Customer parameters, Customer groups, Customers V3, Customer invoicing journal.
Set Default refresh type to Full push only.
Set Skip staging to Yes.
Set Generate data package to No.

Only a subset of customers is imported into the pilot instance. You make a correction to ensure that all customer data is imported. What should you do next?

Set the entity order to Customer parameters, Customer groups, Customers V3, Customer invoicing journal.
Set Default refresh type to Full push only.
Set Skip staging to Yes.
Set Generate data package to No.

- A. Mastered
- B. Not Mastered

Answer: A

Explanation:

Answer Area

You receive an error when importing data into the pilot instance. You need to troubleshoot the error. What should you do first?

Set the entity order to Customer parameters, Customer groups, Customers V3, Customer invoicing journal.
Set Default refresh type to Full push only.
Set Skip staging to Yes. ☒
Set Generate data package to No.

Only a subset of customers is imported into the pilot instance. You make a correction to ensure that all customer data is imported. What should you do next?

Set the entity order to Customer parameters, Customer groups, Customers V3, Customer invoicing journal.
Set Default refresh type to Full push only.
Set Skip staging to Yes.
Set Generate data package to No.

NEW QUESTION 33

- (Exam Topic 2)

A company implements Dynamics 365 for Finance and Operations. It must set up the system to be ready for entering inventory items. You need to select which unit of conversion fits the scenario.

Which conversion types should you use? To answer, select the appropriate options in the answer area. NOTE: Each correct selection is worth one point.

Answer Area

Scenario	Conversion type
Car paint colors and their ingredients are purchased in barrels, stocked in ounces, and sold in gallons.	<input type="checkbox"/> Standard <input type="checkbox"/> Intra-class <input type="checkbox"/> Inter-class
Steel is purchased in tons, stocked in pounds, and sold in linear feet.	<input type="checkbox"/> Standard <input type="checkbox"/> Intra-class <input type="checkbox"/> Inter-class
Bolts and nuts are purchased in pounds, stocked as individual units, and sold in boxes.	<input type="checkbox"/> Standard <input type="checkbox"/> Intra-class <input type="checkbox"/> Inter-class

- A. Mastered
B. Not Mastered

Answer: A

Explanation:

Answer Area

Scenario	Conversion type
Car paint colors and their ingredients are purchased in barrels, stocked in ounces, and sold in gallons.	<input checked="" type="checkbox"/> Standard <input checked="" type="checkbox"/> Intra-class <input checked="" type="checkbox"/> Inter-class
Steel is purchased in tons, stocked in pounds, and sold in linear feet.	<input checked="" type="checkbox"/> Standard <input checked="" type="checkbox"/> Intra-class <input checked="" type="checkbox"/> Inter-class
Bolts and nuts are purchased in pounds, stocked as individual units, and sold in boxes.	<input checked="" type="checkbox"/> Standard <input checked="" type="checkbox"/> Intra-class <input checked="" type="checkbox"/> Inter-class

NEW QUESTION 37

- (Exam Topic 2)

You are working as a functional consultant in a new Dynamics 365 for Finance and Operations environment. Your organization conducts business within the United States, with offices in several states. The organization has legal entities defined for each state and must share common tables between entities.

Each legal entity has the following setup:

- ☒ Users
- ☒ Products
- ☒ Customers
- ☒ Tax authorities
- ☒ Payment terms
- ☒ Human Resources data
- ☒ Site-specific stock ordering

You need to consolidate reports used for financial-consolidation reporting in a new legal entity. What should you do?

- A. Define the consolidation period
B. Specify the range of product for consolidation
C. Define Human Resources data

D. Create users

Answer: A

NEW QUESTION 38

- (Exam Topic 2)

You are tasked with setting up Case management in the Dynamics 365 for Finance and Operations deployment for your organization. Your organization must use cases to track defect and enhancement reports for products, so that engineers can improve products over time. Only appropriate employees within the organization should have access to cases and related information.

- * Call center employees create thousands of service cases and ensure that the proper resources are allocated for each service.
- * Service department employees fix cases created by the call center and create cases for defects and enhancement suggestions when they identify them.
- * Engineers review the cases from the service department while planning and designing the next version. You need to configure the tool to enable tracking of service cases and product defects and enhancements.

Which Case management settings should you choose for each category or categories? To answer, select the appropriate options in the answer area.

NOTE: Each correct selection is worth one point.

	Option	Value
Category to use.		<div>General and Production</div> <div>Service and Product change</div>
Service department in which employees create cases.		<div>General</div> <div>Production</div> <div>Service</div> <div>Product change</div>
Call center in which employees create cases.		<div>General</div> <div>Production</div> <div>Service</div> <div>Product change</div>

- A. Mastered
- B. Not Mastered

Answer: A

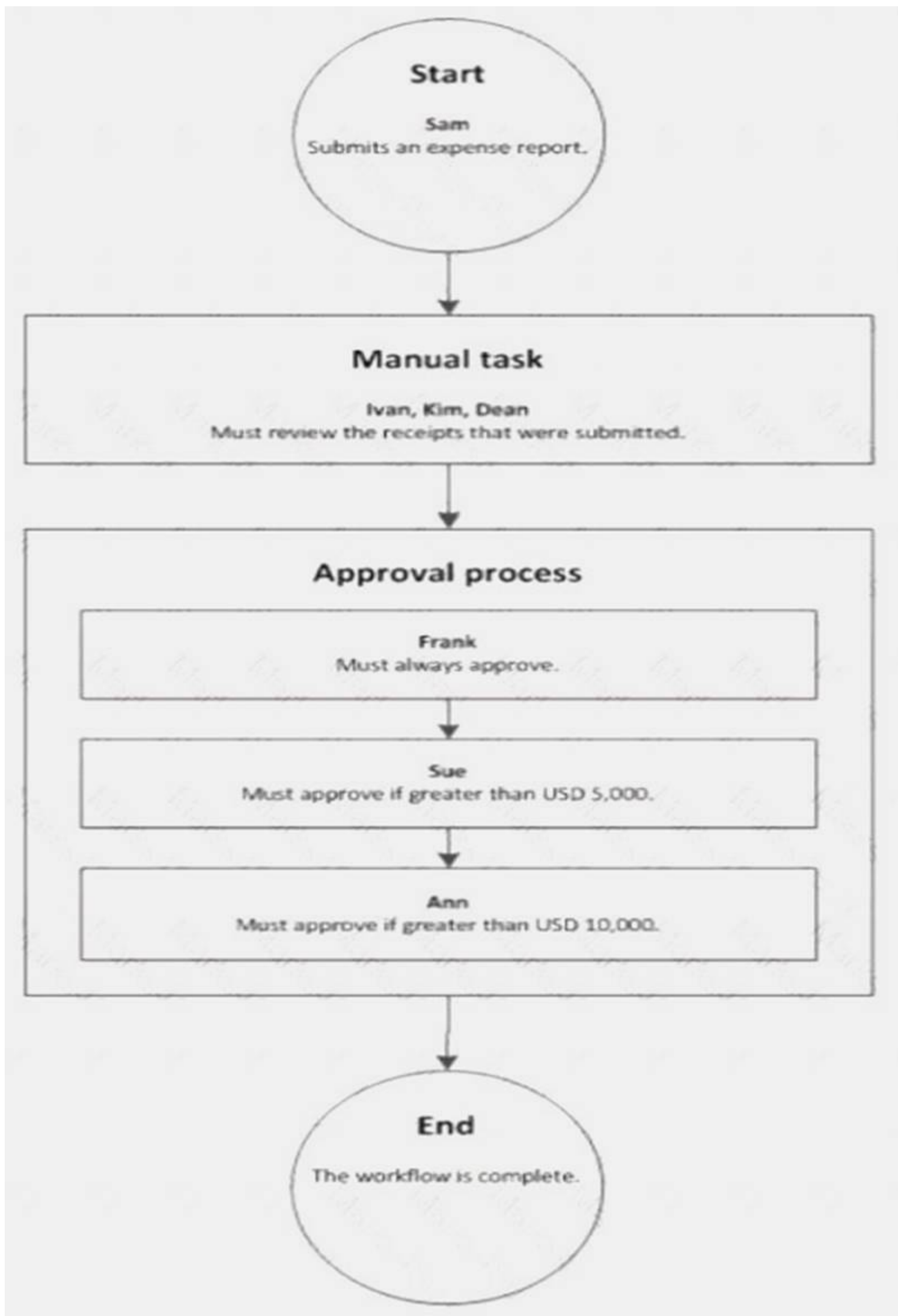
Explanation:

	Option	Value
Category to use.		<div>General and Production</div> <div>Service and Product change</div>
Service department in which employees create cases.		<div>General</div> <div>Production</div> <div>Service</div> <div>Product change</div>
Call center in which employees create cases.		<div>General</div> <div>Production</div> <div>Service</div> <div>Product change</div>

NEW QUESTION 42

- (Exam Topic 2)

A company sets up a workflow for expense reports. An employee named Sam submits an expense report totaling USD 7,000 to go through the workflow.



Use the drop-down menus to select the answer choice that answers each question based on the information presented in the graphic.

NOTE: Each correct selection is worth one point.

Questions	Answer choice
What statement about the workflow is correct?	<div>Ann can reject the expense report.</div> <div>Ivan, Kim, and Dean must all complete the manual task.</div> <div>The workflow ends after Sue approves the expense report.</div> <div>The expense report will go through Frank, Sue, and Ann for approval.</div>
What type of workflow is this?	<div>Workflow with roles</div> <div>Workflow with a manual decision</div> <div>Workflow with multiple users in a task</div> <div>Workflow with a line-item workflow element</div>

- A. Mastered
B. Not Mastered

Answer: A

Explanation:

Reference:

<https://docs.microsoft.com/en-us/dynamicsax-2012/appuser-itpro/workflow-with-multiple-users-in-a-task>

NEW QUESTION 47

- (Exam Topic 2)

Note: This question is part of a series of questions that present the same scenario. Each question in the series contains a unique solution that might meet the stated goals. Some question sets might have more than one correct solution, while others might not have a correct solution.

After you answer a question in this section, you will NOT be able to return to it. As a result, these questions will not appear in the review screen.

You are a Dynamics 365 for Finance and Operations system administrator. You have a test environment that is used by several people at any given time.

You create a new data entity in your development and migrate the code to the test environment. In the test environment, you are unable to find the data entity in the list.

You need to locate the data entity.

Solution: Enable the Public API check box in the data entity. Does the solution meet the goal?

- A. Yes
B. No

Answer: B

NEW QUESTION 52

- (Exam Topic 2)

You set up Dynamics 365 for Finance and Operations. Your organization will use email with the application.

You need to ensure that email will be sent using typical secure settings. What setting must be set up as specified?

- A. Specify if SSL is required is selected.
B. Information rights management is enabled.
C. In-place hold and Litigation hold are enabled.
D. In-place eDiscovery is enabled.

Answer: A

NEW QUESTION 53

- (Exam Topic 2)





You are a Dynamics 365 for Finance and Operations system administrator.

The finance department is experiencing electronic reporting submittal issues. You must use all available sources to troubleshoot those issues.

You need to identify potential hotfixes.

Which four actions should you perform in sequence? To answer, move the appropriate actions from the list of actions to the answer area and arrange them in the correct order.

Actions	Answer area
Log in to Lifecycle Services (LCS).	
Use the Issue search tile.	
Select a project to work in.	
Enter the issue case number.	
Enter search terms.	
Create a new case.	

- A. Mastered
B. Not Mastered

Answer: A

Explanation:

Reference:

<https://docs.microsoft.com/en-us/dynamics365/unified-operations/dev-itpro/lifecycle-services/issue-search-lcs>

NEW QUESTION 58

- (Exam Topic 2)

Note: This question is part of a series of questions that present the same scenario. Each question in the series contains a unique solution that might meet the stated goals. Some question sets might have more than one correct solution, while others might not have a correct solution.

After you answer a question in this section, you will NOT be able to return to it. As a result, these questions will not appear in the review screen.

You are configuring a Dynamics 365 for Finance and Operations environment. You must set up Microsoft Excel data exports.

You need to verify that the solution will result in a successful export of data to Excel.

Solution: Use Open in Excel to open an entity form that does not share the same root data source by implementing the ExportToExcellGeneratedCustomExport interface.

Does the solution meet the goal?

A. Yes

B. No

Answer: B

NEW QUESTION 63

- (Exam Topic 2)

A company implements Dynamics 365 for Finance and Operations and sets up and configures the system to support its reporting requirements using Microsoft Power BI. A user creates a chart in her Power BI instance to display customer order patterns for the top 10 customers daily.

You need to configure the Power BI integration to pin the chart to the user's workspace in Dynamics 365 for Finance and Operations.

Which three actions should you perform? Each correct answer presents part of the solution. NOTE: Each correct selection is worth one point.

A. In the Dynamics 365 for Finance and Operations client, authorize sign-in to Power BI.

B. In Azure Active Directory, grant the customer services manager administrative permissions to the company's Azure Active Directory account to run the report.

C. In Microsoft Azure Active Directory, add the PowerBI service to the app registration and grant the necessary delegated permissions.

D. In the Entity store, configure the Application ID and Application key for PowerBI.

E. In the Dynamics 365 for Finance and Operations System administration setup screen in PowerBI.com, configure the application ID and application key.

Answer: ACE

Explanation:

References:

<https://docs.microsoft.com/en-us/dynamics365/unified-operations/dev-itpro/analytics/configure-power-bi-integr>

NEW QUESTION 68

- (Exam Topic 2)

A company plans to create a global address book and additional address books for each line of business. You need to help add parties to the address books.

What party types can you use for both the global address book and the additional address books? NOTE: Each correct selection is worth one point.

A. Customer

B. Vendor

C. Person

D. Competitor

E. Organization

Answer: ABD

Explanation:

<https://docs.microsoft.com/en-sg/dynamics365/unified-operations/fin-and-ops/organization-administration/overv>

NEW QUESTION 69

- (Exam Topic 2)

You implement Dynamics 365 for Finance and Operations. The implementation will undergo User Acceptance Testing (UAT).

You create test case recordings. To coordinate testing across multiple environments, UAT must be integrated with Microsoft Azure DevOps.

You need to configure Business process modeler (BPM) and Azure DevOps to complete user acceptance testing.

Which three actions should you perform? Each correct answer presents a complete solution.

NOTE: Each correct selection is worth one point.

A. Synchronize the BPM library with Azure DevOps

B. Create a test pass and test case in Azure DevOps

C. Upload saved Task recorder files to BPM

D. Create a test plan and test suites in Azure DevOps

E. Synchronize the BPM library with a Git repo

F. Upload saved Task recorder files to Azure DevOps

Answer: ACD

Explanation:

References:

<https://docs.microsoft.com/en-us/dynamics365/unified-operations/dev-itpro/lifecycle-services/using-taskguides-and-bpm-to-create-user-acceptance-tests>

NEW QUESTION 70

- (Exam Topic 2)

You set up a new instance of Dynamics 365 for Finance and Operations.

The IT department needs to track requisitions for new equipment by using unique identifiers. Due to regulatory requirements, the unique identifiers must not have missing values. Everyone in the organization will make requisitions using the unique identifiers.

You need to establish unique identifiers.

What application features should you use? To answer, select the application feature to match the parameter in the answer area.

NOTE: Each correct selection is worth one point.

Answer Area

Parameter	Application feature
System entity	Number sequences Case management Workflow system Purchasing policy
Type for a prefix of ITreq	Alphanumeric segment Constant segment
Scope	Legal entity Company Shared
Type	Non-continuous Continuous

- A. Mastered
- B. Not Mastered

Answer: A

Explanation:

Reference:

<https://docs.microsoft.com/en-us/dynamics365/unified-operations/fin-and-ops/organization-administration/numb>

NEW QUESTION 71

- (Exam Topic 2)

You are a Dynamics 365 for Finance and Operations system administrator.

You have 50 identified purchase order numbers that are not used in the system and are not being recycled. Why they are missing is unknown. Purchasing operations is currently operating around the clock and no downtime can occur.

You need to use the missing numbers in the system. What should you do?

- A. Run the Number sequence wizard for the purchase order number sequence.
- B. Change the number sequence to manual, then manually assign the number sequences to the new purchase orders.
- C. Change the number sequence to continuous and create the new purchase orders.
- D. Run Automatic cleanup of number sequence and create the new purchase orders.
- E. Change the number sequence to non-continuous and create the new purchase orders.

Answer: D

NEW QUESTION 76

- (Exam Topic 2)

You set up Dynamics 365 for Finance and Operations. Your organization will use email with the application.

You need to ensure that email will be sent using typical secure settings. What setting must be set as specified?

- A. In-place hold and Litigation hold are enabled.
- B. In-place eDiscovery is enabled,
- C. The SMTP port field is set to 587.
- D. Retention policies are enabled.

Answer: C

NEW QUESTION 78

- (Exam Topic 2)

You are a Dynamics 365 for Finance and Operations system administrator for a United States-based corporation that is expanding to other regions.

You set up a new legal entity for Brazil.

You need to enable localization for Brazil in the new legal entity. What should you do?

- A. Create a new Lifecycle Services project.
- B. Create a new entity with your corporate address in the system, and then update the address to the Brazil office address.
- C. Create a new legal entity with the Brazil office address in the system, and then set preferences according to the user.
- D. Create a new configuration key and associate it with the Brazil localization.

E. Create a new entity in the system with your corporate address and set the user language preferences for Brazil.

Answer: D

NEW QUESTION 79

- (Exam Topic 2)

Note: This question is part of a series of questions that present the same scenario. Each question in the series contains a unique solution that might meet the stated goals. Some question sets might have more than one correct solution, while others might not have a correct solution.

After you answer a question in this section, you will NOT be able to return to it. As a result, these questions will not appear in the review screen.

You are a Dynamics 365 for Finance and Operations system administrator. You have a test environment that is used by several people at any given time.

You create a new data entity in your development and migrate the code to the test environment. In the test environment, you are unable to find the data entity in the list.

You need to locate the data entity.

Solution: In the Data management framework parameter screen, refresh the Entity list. Does the solution meet the goal?

A. Yes

B. No

Answer: A

NEW QUESTION 83

- (Exam Topic 2)

Note: This question is part of a series of questions that present the same scenario. Each question in the series contains a unique solution that might meet the stated goals. Some question sets might have more than one correct solution, while others might not have a correct solution.

After you answer a question in this section, you will NOT be able to return to it. As a result, these questions will not appear in the review screen.

You are configuring a Dynamics 365 for Finance and Operations environment. You must set up Microsoft Excel data exports.

You need to verify that the solution will result in a successful export of data to Excel. Solution: Use OAuth authentication.

Does the solution meet the goal?

A. Yes

B. No

Answer: B

NEW QUESTION 86

- (Exam Topic 2)

A company implements Dynamics 365 for Finance and Operations.

You are the primary approver for purchase requisitions that are greater than \$500,000. You are going on vacation for two weeks.

You need to assign another user as the approver only for purchase requisitions greater than \$500,000. What should you do?

A. Under User Options, add a user and assign the scope of Module

B. Under User Options, add a user and assign the scope of All

C. Under User Options, add a user and assign the scope of Workflow

Answer: C

NEW QUESTION 88

- (Exam Topic 2)

You manage a Dynamics 365 for Finance and Operations environment.

In preparation for being migrated into a new environment, data packages are being numbered in alignment with the default numbering formats in Lifecycle Services. A package is named 03.01.002.

You need to identify what this package contains. To answer, select the appropriate option in the answer area. NOTE: Each correct selection is worth one point.

Segment	Component
03	<div>The environment The module The data type The month</div>
01	<div>The module The month The sequence number The data type</div>
002	<div>The sequence number The data package version The data entity The data type reference</div>

A. Mastered

B. Not Mastered

Answer: A

Explanation:

Segment	Component
03	<div> <div>The environment</div> <div>The module</div> <div>The data type</div> <div>The month</div> </div>
01	<div> <div>The module</div> <div>The month</div> <div>The sequence number</div> <div>The data type</div> </div>
002	<div> <div>The sequence number</div> <div>The data package version</div> <div>The data entity</div> <div>The data type reference</div> </div>

NEW QUESTION 90

- (Exam Topic 2)

Note: This question is part of a series of questions that present the same scenario. Each question in the series contains a unique solution that might meet the stated goals. Some question sets might have more than one correct solution, while others might not have a correct solution.

After you answer a question in this section, you will NOT be able to return to it. As a result, these questions will not appear in the review screen.

You are developing a file-based integration to Dynamics 365 for Finance and Operations.

Microsoft Excel files with 15,000 or more records need to be imported into the system periodically by individual users. The records need to be imported in full within a 5-minute approved window.

You need to determine how to accomplish the import into the system. Solution: Import the data by using the Excel Add-in.

Does the solution meet the goal?

- A. Yes
- B. No

Answer: A

NEW QUESTION 91

- (Exam Topic 2)

A system administrator has limited security rights in a Dynamics 365 for Finance and Operations environment that has multiple legal entities. You have a service-level agreement (SLA) of 30 minutes for support requests.

The organizational administrator set up the printers for the organization.

A printer fails. The system administrator deletes the printer instance. Sensitive print jobs remain in the printer queue and must be purged. Existing permissions do not allow the system administrator to purge the print queue because the printer is attached to multiple legal entities.

You need to purge the documents from the print queue.

What should you do?

- A. Wait for the organizational administrator to return to purge the documents._
- B. Use the system administration utility to purge the documents.
- C. Use an account with administrative permissions on the network printer to purge the queue.
- D. Contact Microsoft technical support-

Answer: C

NEW QUESTION 94

- (Exam Topic 2)

You set up a new instance of Dynamics 365 for Finance and Operations. Your company sells widgets in cases of 12 units and pallets of 144 cases. You need to establish the units of measure.

Which parameter is used to detail the units of measure? To answer, select the detail to match the parameter in the answer area.

NOTE: Each correct selection is worth one point.

Parameter	Detail
Unit class	<div>Quantity</div> <div>Mass</div> <div>Area</div>
From unit in widgets-per-case conversion	<div>Unit</div> <div>Case</div> <div>Pallet</div> <div>Widgets</div>
To unit in cases-per-pallet conversion	<div>Unit</div> <div>Case</div> <div>Pallet</div> <div>Widgets</div>

- A. Mastered
- B. Not Mastered

Answer: A

Explanation:

Parameter	Detail
Unit class	Quantity Mass Area
From unit in widgets-per-case conversion	Unit Case Pallet Widgets
To unit in cases-per-pallet conversion	Unit Case Pallet Widgets

NEW QUESTION 95

- (Exam Topic 2)

A company implements Dynamics 365 for Finance and Operations.

The company wants to utilize Case management to track project issues and risks and associate them to the projects. Project managers will be responsible for managing the new cases.

You need to configure the system. What should you do?

- A. Create case subcategories named Issue and Risk.
- B. Create parent case categories named Issue and Risk.
- C. Create case activities for Issue and Risk-
- D. Create case category security roles named Issue and Risk and assign them to the Project managers duty.

Answer: A

NEW QUESTION 99

- (Exam Topic 2)

A company plans to set up an organizational hierarchy to manage organizational relationships. You need to identify which organizational purpose to use. What purpose can you assign to an organizational hierarchy?

- A. Centralized payments
- B. Financial reason code
- C. Cost center
- D. Price models

Answer: A

Explanation:

Reference:

<https://docs.microsoft.com/en-us/dynamics365/unified-operations/financials/cash-bank-management/set-up-cent>

NEW QUESTION 104

- (Exam Topic 2)

You are a Dynamics 365 for Finance and Operations developer.

New features for Dynamics 365 for Finance and Operations have been released. Your company plans to upgrade their Dynamics 365 instance soon.

You need to download a virtual machine that includes all of the new features so that you can explore the new features.

Where should you go?

- A. Microsoft Connect
- B. Shared Asset library
- C. Environments
- D. My subscription
- E. Microsoft Developer Network

Answer: C

NEW QUESTION 106

- (Exam Topic 2)

You are a Dynamics 365 for Finance and Operations systems administrator.

An issue has been reported that appears to be a base Dynamics 365 bug. The system was last updated three weeks ago. Searching for the issue by description in Lifecycle Services is not working.

You need to determine other ways to search for similar issues to help narrow down the search before opening a Microsoft ticket.

What are two ways to search for a released hotfix? Each correct answer presents a complete solution.

NOTE: Each correct selection is worth one point.

- A. By industry
- B. By Microsoft support ticket number
- C. By AOT object name
- D. Date range for release

Answer: BC

Explanation:

References:

<https://docs.microsoft.com/en-us/dynamics365/unified-operations/dev-itpro/lifecycle-services/issue-search-lcs>

NEW QUESTION 108

- (Exam Topic 2)

Note: This question is part of a series of questions that present the same scenario. Each question in the series contains a unique solution that might meet the stated goals. Some question sets might have more than one correct solution, while others might not have a correct solution.

After you answer a question in this section, you will NOT be able to return to it. As a result, these questions will not appear in the review screen.

You are developing a file-based integration to Dynamics 365 for Finance and Operations.

Microsoft Excel files with 15,000 or more records need to be imported into the system periodically by individual users. The records need to be imported in full within a 5-minute approved window.

You need to determine how to accomplish the import into the system. Solution: Import the data by using the recurring data integrations API. Does the solution meet the goal?

A. Yes

B. No

Answer: B

NEW QUESTION 112

.....

Thank You for Trying Our Product

* 100% Pass or Money Back

All our products come with a 90-day Money Back Guarantee.

* One year free update

You can enjoy free update one year. 24x7 online support.

* Trusted by Millions

We currently serve more than 30,000,000 customers.

* Shop Securely

All transactions are protected by VeriSign!

100% Pass Your mb-300 Exam with Our Prep Materials Via below:

<https://www.certleader.com/mb-300-dumps.html>