

CS0-002 Dumps

CompTIA Cybersecurity Analyst (CySA+) Certification Exam

<https://www.certleader.com/CS0-002-dumps.html>



NEW QUESTION 1

A cybersecurity analyst is supposing an incident response effort via threat intelligence. Which of the following is the analyst MOST likely executing?

- A. Requirements analysis and collection planning
- B. Containment and eradication
- C. Recovery and post-incident review
- D. Indicator enrichment and research pivoting

Answer: D

NEW QUESTION 2

An analyst is participating in the solution analysis process for a cloud-hosted SIEM platform to centralize log monitoring and alerting capabilities in the SOC. Which of the following is the BEST approach for supply chain assessment when selecting a vendor?

- A. Gather information from providers, including datacenter specifications and copies of audit reports.
- B. Identify SLA requirements for monitoring and logging.
- C. Consult with senior management for recommendations.
- D. Perform a proof of concept to identify possible solutions.

Answer: B

NEW QUESTION 3

A security analyst conducted a risk assessment on an organization's wireless network and identified a high-risk element in the implementation of data confidentiality protection. Which of the following is the BEST technical security control to mitigate this risk?

- A. Switch to RADIUS technology
- B. Switch to TACACS+ technology.
- C. Switch to 802.1X technology
- D. Switch to the WPA2 protocol.

Answer: B

NEW QUESTION 4

An organization is moving its infrastructure to the cloud in an effort to meet the budget and reduce staffing requirements. The organization has three environments: development, testing, and production. These environments have interdependencies but must remain relatively segmented. Which of the following methods would BEST secure the company's infrastructure and be the simplest to manage and maintain?

- A. Create three separate cloud accounts for each environment
- B. Configure account peering and security rules to allow access to and from each environment.
- C. Create one cloud account with one VPC for all environment
- D. Purchase a virtual firewall and create granular security rules.
- E. Create one cloud account and three separate VPCs for each environment
- F. Create security rules to allow access to and from each environment.
- G. Create three separate cloud accounts for each environment and a single core account for network service
- H. Route all traffic through the core account.

Answer: C

NEW QUESTION 5

During routine monitoring, a security analyst discovers several suspicious websites that are communicating with a local host. The analyst queries for IP 192.168.50.2 for a 24-hour period:

Time	SRC	DST	Domain	Bytes
6/26/19 10:01	192.168.50.2	138.10.2.5	www.wioapsfeje.co	50
6/26/19 11:05	192.168.50.2	138.10.2.5	www.wioapsfeje.co	1000
6/26/19 13:09	192.168.50.2	138.10.25.5	www.wfaojsjfjoe.co	1000
6/26/19 15:13	192.168.50.2	172.10.25.5	www.wfalksdjflse.co	1000
6/26/19 17:17	192.168.50.2	172.10.45.5	www.wsahlfdsjlfse.co	1000
6/26/19 23:45	192.168.50.2	172.10.3.5	ftp.walksdjgfl.co	50000
6/27/19 10:21	192.168.50.2	175.35.20.5	www.whatsmyip.com	25
6/27/19 11:25	192.168.50.2	175.35.20.5	www.whatsmyip.com	25

To further investigate, the analyst should request PCAP for SRC 192.168.50.2 and.

- A. DST 138.10.2.5.
- B. DST 138.10.25.5.
- C. DST 172.10.3.5.
- D. DST 172.10.45.5.
- E. DST 175.35.20.5.

Answer: A

NEW QUESTION 6

The inability to do remote updates of certificates, keys software and firmware is a security issue commonly associated with:

- A. web servers on private networks.
- B. HVAC control systems
- C. smartphones
- D. firewalls and UTM devices

Answer: B

NEW QUESTION 7

A security manager has asked an analyst to provide feedback on the results of a penetration test. After reviewing the results the manager requests information regarding the possible exploitation of vulnerabilities. Much of the following information data points would be MOST useful for the analyst to provide to the security manager who would then communicate the risk factors to senior management? (Select TWO)

- A. Probability
- B. Adversary capability
- C. Attack vector
- D. Impact
- E. Classification
- F. Indicators of compromise

Answer: AD

NEW QUESTION 8

An analyst is reviewing a list of vulnerabilities, which were reported from a recent vulnerability scan of a Linux server. Which of the following is MOST likely to be a false positive?

- A. OpenSSH/OpenSSL Package Random Number Generator Weakness
- B. Apache HTTP Server Byte Range DoS
- C. GDI+ Remote Code Execution Vulnerability (MS08-052)
- D. HTTP TRACE / TRACK Methods Allowed (002-1208)
- E. SSL Certificate Expiry

Answer: E

NEW QUESTION 9

A web developer wants to create a new web part within the company website that aggregates sales from individual team sites. A cybersecurity analyst wants to ensure security measurements are implemented during this process. Which of the following remediation actions should the analyst take to implement a vulnerability management process?

- A. Personnel training
- B. Vulnerability scan
- C. Change management
- D. Sandboxing

Answer: C

NEW QUESTION 10

A security analyst is investigating malicious traffic from an internal system that attempted to download proxy avoidance software as identified from the firewall logs but the destination IP is blocked and not captured. Which of the following should the analyst do?

- A. Shut down the computer
- B. Capture live data using Wireshark
- C. Take a snapshot
- D. Determine if DNS logging is enabled.
- E. Review the network logs.

Answer: A

NEW QUESTION 10

An organization developed a comprehensive incident response policy. Executive management approved the policy and its associated procedures. Which of the following activities would be MOST beneficial to evaluate personnel's familiarity with incident response procedures?

- A. A simulated breach scenario involving the incident response team
- B. Completion of annual information security awareness training by all employees
- C. Tabletop activities involving business continuity team members
- D. Completion of lessons-learned documentation by the computer security incident response team
- E. External and internal penetration testing by a third party

Answer: A

NEW QUESTION 11

Which of the following MOST accurately describes an HSM?

- A. An HSM is a low-cost solution for encryption.
- B. An HSM can be networked based or a removable USB
- C. An HSM is slower at encrypting than software
- D. An HSM is explicitly used for MFA

Answer: A

NEW QUESTION 15

A security analyst suspects a malware infection was caused by a user who downloaded malware after clicking `http://<malwaresource>/a.php` in a phishing email. To prevent other computers from being infected by the same malware variation, the analyst should create a rule on the.

- A. email server that automatically deletes attached executables.
- B. IDS to match the malware sample.
- C. proxy to block all connections to `<malwaresource>`.
- D. firewall to block connection attempts to dynamic DNS hosts.

Answer: C

NEW QUESTION 16

A company recently experienced a break-in whereby a number of hardware assets were stolen through unauthorized access at the back of the building. Which of the following would BEST prevent this type of theft from occurring in the future?

- A. Motion detection
- B. Perimeter fencing
- C. Monitored security cameras
- D. Badged entry

Answer: A

NEW QUESTION 20

A security analyst is reviewing the following log from an email security service.

```
Rejection type:      Drop
Rejection description: IP found in RBL
Event time:          Today at 16:06
Rejection information: mail.comptia.org
                    https://www.spamfilter.org/query?P=192.167.28.243
From address:        user@comptex.org
To address:          tests@comptia.org
IP address:          192.167.28.243
Remote server name:  192.167.28.243
```

Which of the following BEST describes the reason why the email was blocked?

- A. The To address is invalid.
- B. The email originated from the `www.spamfilter.org` URL.
- C. The IP address and the remote server name are the same.
- D. The IP address was blacklisted.
- E. The From address is invalid.

Answer: D

NEW QUESTION 22

A security analyst needs to assess the web server versions on a list of hosts to determine which are running a vulnerable version of the software and output that list into an XML file named `Webserverlist.Xml`. The host list is provided in a file named `webserverlist.txt`. Which of the following Nmap commands would BEST accomplish this goal?

- A)

```
nmap -iL webserverlist.txt -oC -p 443 -oX webserverlist.xml
```
- B)

```
nmap -iL webserverlist.txt -sV -p 443 -oX webserverlist.xml
```
- C)

```
nmap -iL webserverlist.txt -F -p 443 -oX webserverlist.xml
```
- D)

```
nmap --takefile webserverlist.txt --outputfileasXML webserverlist.xml --scanports 443
```

- A. Option A
- B. Option B
- C. Option C
- D. Option D

Answer: A

NEW QUESTION 24

A security analyst is attempting to utilize the blowing threat intelligence for developing detection capabilities:

APT X's approach to a target would be sending a phishing email to the target after conducting active and passive reconnaissance. Upon successful compromise, APT X conducts internal reconnaissance and attempts to move laterally by utilizing existing resources. When APT X finds data that aligns to its objectives, it stages and then exfiltrates data sets in sizes that can range from 1GB to 5GB. APT X also establishes several backdoors to maintain a CI presence in the environment.

In which of the following phases is this APT MOST likely to leave discoverable artifacts?

- A. Data collection/exfiltration
- B. Defensive evasion
- C. Lateral movement
- D. Reconnaissance

Answer: A

NEW QUESTION 25

A Chief Information Security Officer (CISO) wants to upgrade an organization's security posture by improving proactive activities associated with attacks from internal and external threats.

Which of the following is the MOST proactive tool or technique that feeds incident response capabilities?

- A. Development of a hypothesis as part of threat hunting
- B. Log correlation, monitoring, and automated reporting through a SIEM platform
- C. Continuous compliance monitoring using SCAP dashboards
- D. Quarterly vulnerability scanning using credentialed scans

Answer: A

NEW QUESTION 28

A Chief Information Security Officer (CISO) is concerned the development team, which consists of contractors, has too much access to customer data. Developers use personal workstations, giving the company little to no visibility into the development activities.

Which of the following would be BEST to implement to alleviate the CISO's concern?

- A. DLP
- B. Encryption
- C. Test data
- D. NDA

Answer: D

NEW QUESTION 31

A company's Chief Information Security Officer (CISO) is concerned about the integrity of some highly confidential files. Any changes to these files must be tied back to a specific authorized user's activity session. Which of the following is the BEST technique to address the CISO's concerns?

- A. Configure DLP to reject all changes to the files without pre-authorization
- B. Monitor the files for unauthorized changes.
- C. Regularly use SHA-256 to hash the directory containing the sensitive information
- D. Monitor the files for unauthorized changes.
- E. Place a legal hold on the file
- F. Require authorized users to abide by a strict time context access policy. Monitor the files for unauthorized changes.
- G. Use Wireshark to scan all traffic to and from the director
- H. Monitor the files for unauthorized changes.

Answer: A

NEW QUESTION 32

A monthly job to install approved vendor software updates and hot fixes recently stopped working. The security team performed a vulnerability scan, which identified several hosts as having some critical OS vulnerabilities, as referenced in the common vulnerabilities and exposures (CVE) database.

Which of the following should the security team do NEXT to resolve the critical findings in the most effective manner? (Choose two.)

- A. Patch the required hosts with the correct updates and hot fixes, and rescan them for vulnerabilities.
- B. Remove the servers reported to have high and medium vulnerabilities.
- C. Tag the computers with critical findings as a business risk acceptance.
- D. Manually patch the computers on the network, as recommended on the CVE website.
- E. Harden the hosts on the network, as recommended by the NIST framework.
- F. Resolve the monthly job issues and test them before applying them to the production network.

Answer: CE

NEW QUESTION 36

A security analyst is reviewing the following log entries to identify anomalous activity:

```
GET https://comptia.org/admin/login.html&user&password\ HTTP/1.1
GET http://comptia.org/index.php\ HTTP/1.1
GET http://comptia.org/scripts/..%5c../Windows/System32/cmd.exe?/C+dir+c:\ HTTP/1.1
GET http://comptia.org/media/contactus.html\ HTTP/1.1
```

Which of the following attack types is occurring?

- A. Directory traversal
- B. SQL injection
- C. Buffer overflow
- D. Cross-site scripting

Answer: A

NEW QUESTION 38

A security analyst reviews the following aggregated output from an Nmap scan and the border firewall ACL:

Server1	Server2	PC1	PC2
22/tcp open	3389/tcp open	80/tcp open	80/tcp open
80/tcp open	53/udp open	443/tcp open	443/tcp open
443/tcp open			1433/tcp open

Firewall ACL

```
10 permit tcp from:any to:server1:www
15 permit udp from:lan-net to:any:dns
16 permit udp from:any to:server2:dns
20 permit tcp from:any to server1:ssl
25 permit tcp from:lan-net to:any:www
26 permit tcp from:lan-net to:any:ssl
27 permit tcp from:any to pc2:mssql
30 permit tcp from:any to server1:ssh
100 deny ip any any
```

Which of the following should the analyst reconfigure to BEST reduce organizational risk while maintaining current functionality?

- A. PC1
- B. PC2
- C. Server1
- D. Server2
- E. Firewall

Answer: B

NEW QUESTION 39

An analyst identifies multiple instances of node-to-node communication between several endpoints within the 10.200.2.0/24 network and a user machine at the IP address 10.200.2.5. This user machine at the IP address 10.200.2.5 is also identified as initiating outbound communication during atypical business hours with several IP addresses that have recently appeared on threat feeds.

Which of the following can be inferred from this activity?

- A. 10.200.2.0/24 is infected with ransomware.
- B. 10.200.2.0/24 is not routable address space.
- C. 10.200.2.5 is a rogue endpoint.
- D. 10.200.2.5 is exfiltrating data.

Answer: D

NEW QUESTION 44

As a proactive threat-hunting technique, hunters must develop situational cases based on likely attack scenarios derived from the available threat intelligence information. After forming the basis of the scenario, which of the following may the threat hunter construct to establish a framework for threat assessment?

- A. Critical asset list
- B. Threat vector
- C. Attack profile
- D. Hypothesis

Answer: A

NEW QUESTION 45

Which of the following sets of attributes BEST illustrates the characteristics of an insider threat from a security perspective?

- A. Unauthorized, unintentional, benign
- B. Unauthorized, intentional, malicious
- C. Authorized, intentional, malicious
- D. Authorized, unintentional, benign

Answer: C

NEW QUESTION 48

Which of the following is the use of tools to simulate the ability for an attacker to gain access to a specified network?

- A. Reverse engineering
- B. Fuzzing
- C. Penetration testing
- D. Network mapping

Answer: C

NEW QUESTION 49

A security analyst discovers a vulnerability on an unpatched web server that is used for testing machine learning on Bing Data sets. Exploitation of the vulnerability could cost the organization \$1.5 million in lost productivity. The server is located on an isolated network segment that has a 5% chance of being compromised. Which of the following is the value of this risk?

- A. \$75.000
- B. \$300.000
- C. \$1.425 million
- D. \$1.5 million

Answer: A

NEW QUESTION 54

A cybersecurity analyst has access to several threat feeds and wants to organize them while simultaneously comparing intelligence against network traffic. Which of the following would BEST accomplish this goal?

- A. Continuous integration and deployment
- B. Automation and orchestration
- C. Static and dynamic analysis
- D. Information sharing and analysis

Answer: B

NEW QUESTION 56

A security analyst discovers accounts in sensitive SaaS-based systems are not being removed in a timely manner when an employee leaves the organization. To BEST resolve the issue, the organization should implement

- A. federated authentication
- B. role-based access control.
- C. manual account reviews
- D. multifactor authentication.

Answer: A

NEW QUESTION 61

As part of a review of modern response plans, which of the following is MOST important for an organization to understand when establishing the breach notification period?

- A. Organizational policies
- B. Vendor requirements and contracts
- C. Service-level agreements
- D. Legal requirements

Answer: D

NEW QUESTION 66

An organization has not had an incident for several months. The Chief Information Security Officer (CISO) wants to move to a more proactive stance for security investigations. Which of the following would BEST meet that goal?

- A. Root-cause analysis
- B. Active response
- C. Advanced antivirus
- D. Information-sharing community
- E. Threat hunting

Answer: E

NEW QUESTION 67

A company wants to establish a threat-hunting team. Which of the following BEST describes the rationale for integration intelligence into hunt operations?

- A. It enables the team to prioritize the focus area and tactics within the company's environment.
- B. It provide critically analyses for key enterprise servers and services.
- C. It allow analysis to receive updates on newly discovered software vulnerabilities.
- D. It supports rapid response and recovery during and followed an incident.

Answer: A

NEW QUESTION 72

A development team signed a contract that requires access to an on-premises physical server. Access must be restricted to authorized users only and cannot be connected to the Internet.

Which of the following solutions would meet this requirement?

- A. Establish a hosted SSO.
- B. Implement a CASB.
- C. Virtualize the server.
- D. Air gap the server.

Answer: D

NEW QUESTION 75

A security analyst for a large financial institution is creating a threat model for a specific threat actor that is likely targeting an organization's financial assets. Which of the following is the BEST example of the level of sophistication this threat actor is using?

- A. Social media accounts attributed to the threat actor
- B. Custom malware attributed to the threat actor from prior attacks
- C. Email addresses and phone numbers tied to the threat actor
- D. Network assets used in previous attacks attributed to the threat actor
- E. IP addresses used by the threat actor for command and control

Answer: D

NEW QUESTION 80

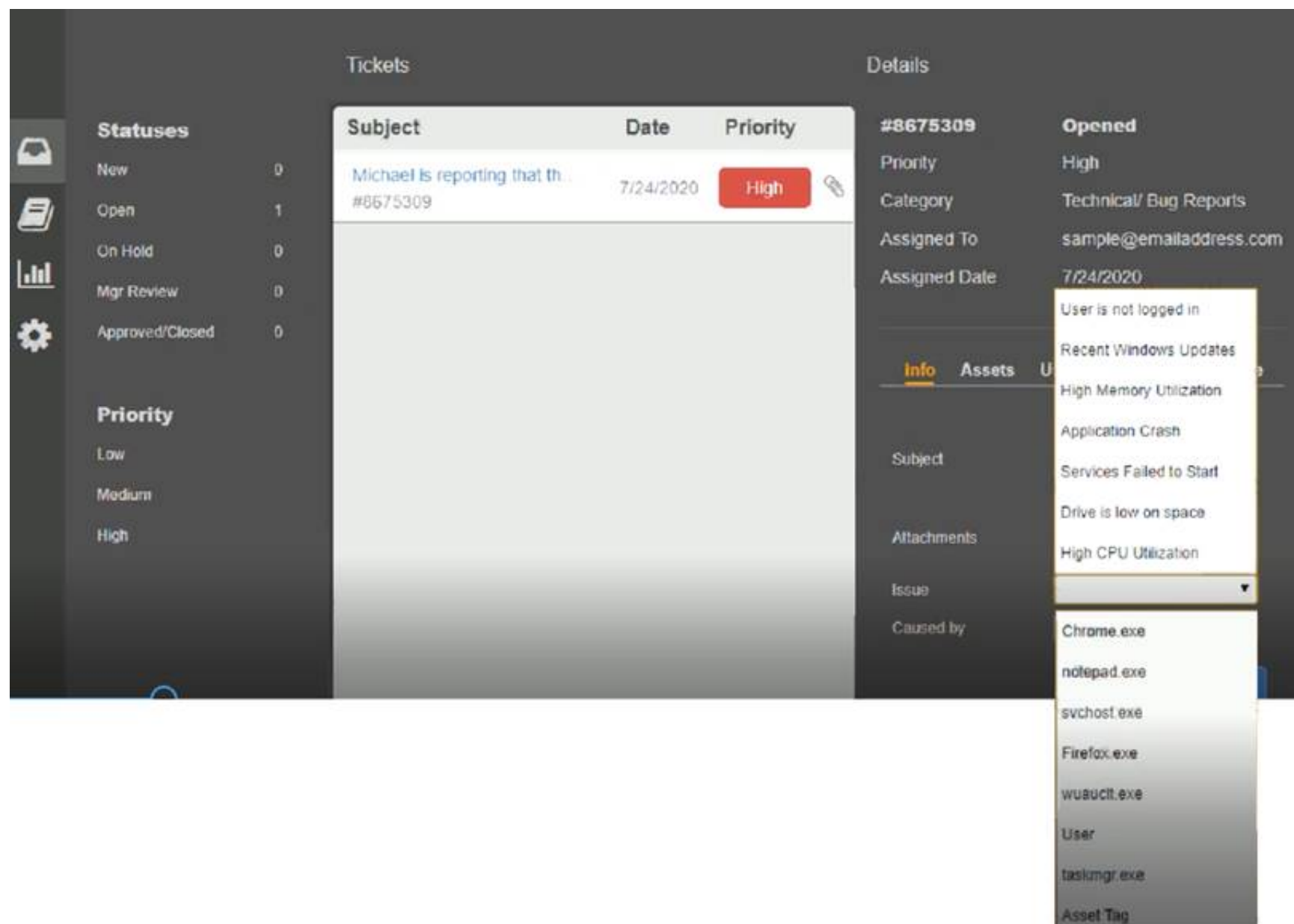
Welcome to the Enterprise Help Desk System. Please work the ticket escalated to you in the desk ticket queue. INSTRUCTIONS

Click on me ticket to see the ticket details Additional content is available on tabs within the ticket

First, select the appropriate issue from the drop-down menu. Then, select the MOST likely root cause from second drop-down menu

If at any time you would like to bring back the initial state of the simulation, please click the Reset All button

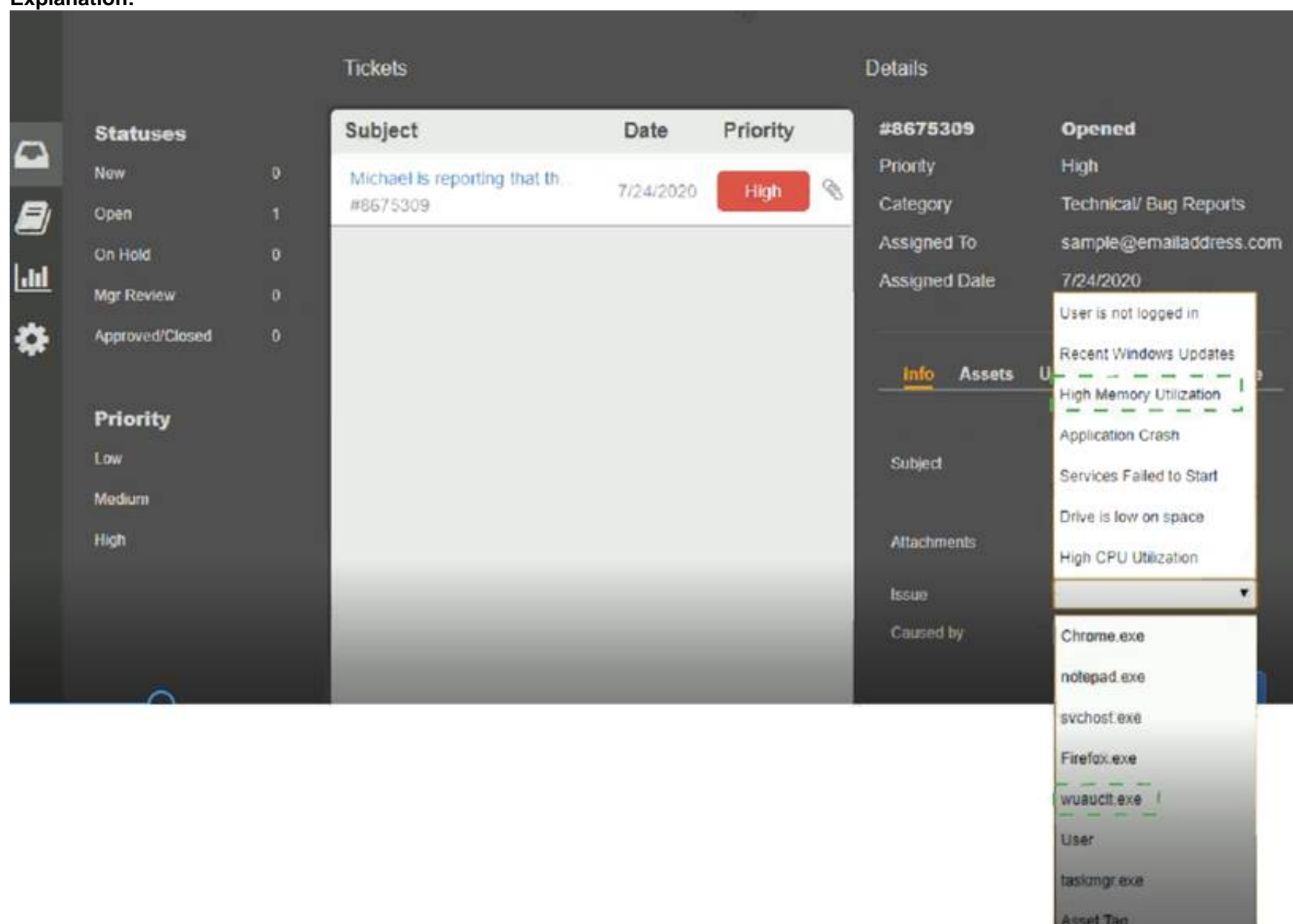
Tickets			Details						
<div><div></div><div>Statuses</div><div><div>New0</div><div>Open1</div><div>On Hold0</div><div>Mgr Review0</div><div>Approved/Closed0</div></div></div> <div><div>Priority</div><div><div>Low</div><div>Medium</div><div>High</div></div></div>	<table><thead><tr><th>Subject</th><th>Date</th><th>Priority</th></tr></thead><tbody><tr><td>Michael is reporting that th... #8675309</td><td>7/24/2020</td><td>High</td></tr></tbody></table>	Subject	Date	Priority	Michael is reporting that th... #8675309	7/24/2020	High	#8675309	Opened
	Subject	Date	Priority						
	Michael is reporting that th... #8675309	7/24/2020	High						
			Priority	High					
			Category	Technical/ Bug Reports					
			Assigned To	sample@emailaddress.com					
			Assigned Date	7/24/2020					
			<div>InfoAssetsUsersApproved Software</div>						
			Subject	Michael is reporting that the internet kiosk machine is intermittently freezing and has lagged performance.					
			Attachments	none					
		Issue	Drive is low on space						
		Caused by	taskmgr.exe						
		<div>Close Ticket</div>							



- A. Mastered
- B. Not Mastered

Answer: A

Explanation:



NEW QUESTION 84

An executive assistant wants to onboard a new cloud based product to help with business analytics and dashboarding. When of the following would be the BEST integration option for the service?

- A. Manually log in to the service and upload data files on a regular basis.
- B. Have the internal development team script connectivity and file translate to the new service.
- C. Create a dedicated SFTP sue and schedule transfers to ensue file transport security
- D. Utilize the cloud products API for supported and ongoing integrations

Answer: A

NEW QUESTION 85

Data spillage occurred when an employee accidentally emailed a sensitive file to an external recipient. Which of the following controls would have MOST likely prevented this incident?

- A. SSO
- B. DLP
- C. WAF
- D. VDI

Answer: B

NEW QUESTION 86

A cybersecurity analyst is responding to an incident. The company's leadership team wants to attribute the incident to an attack group. Which of the following models would BEST apply to the situation?

- A. Intelligence cycle
- B. Diamond Model of Intrusion Analysis
- C. Kill chain
- D. MITRE ATT&CK

Answer: B

NEW QUESTION 89

A small organization has proprietary software that is used internally. The system has not been well maintained and cannot be updated with the rest of the environment Which of the following is the BEST solution?

- A. Virtualize the system and decommission the physical machine.
- B. Remove it from the network and require air gapping.
- C. Only allow access to the system via a jumpbox
- D. Implement MFA on the specific system.

Answer: A

NEW QUESTION 93

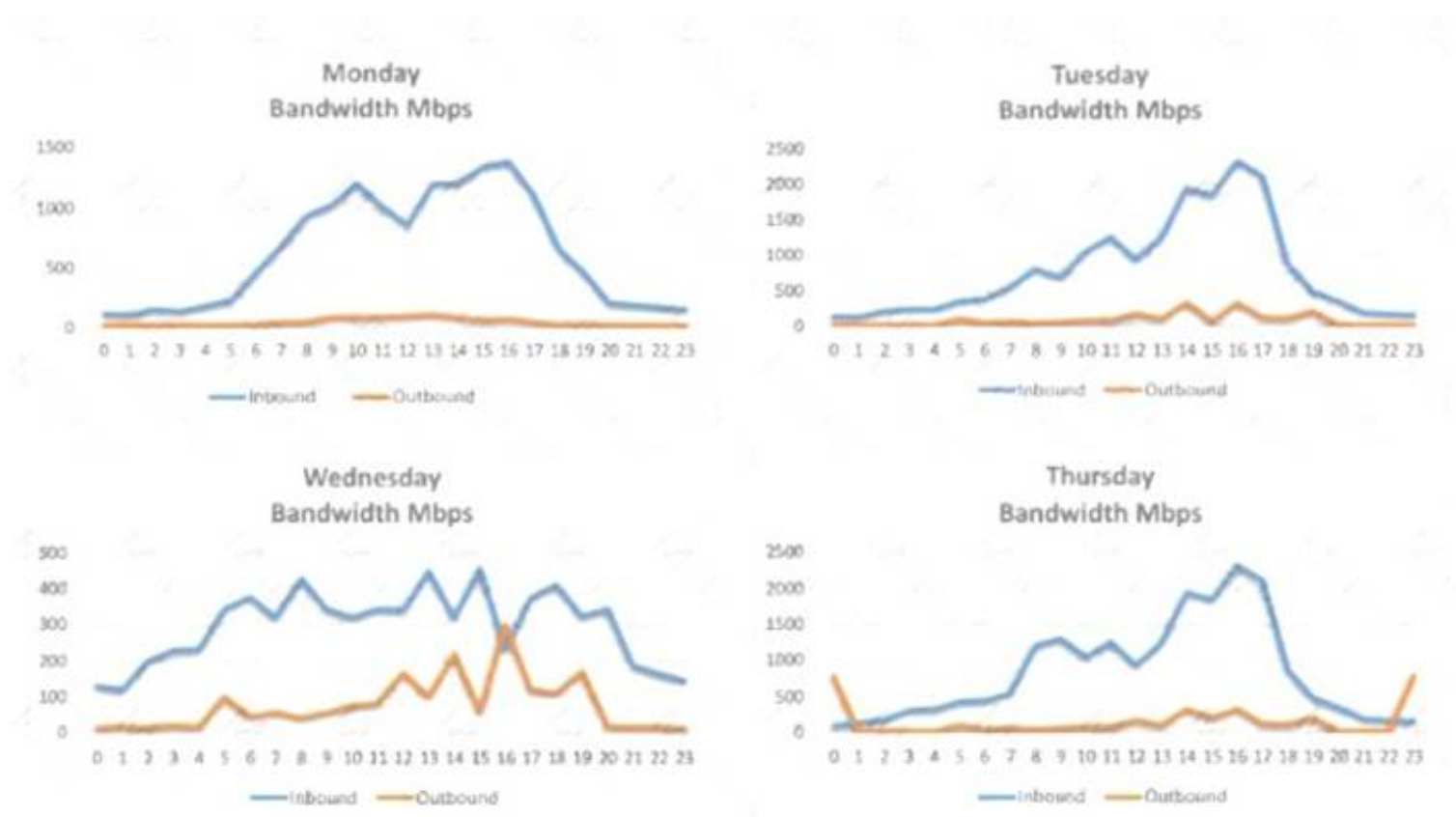
Which of me following BEST articulates the benefit of leveraging SCAP in an organization's cybersecurity analysis toolset?

- A. It automatically performs remedial configuration changes lo enterprise security services
- B. It enables standard checklist and vulnerability analysis expressions for automaton
- C. It establishes a continuous integration environment for software development operations
- D. It provides validation of suspected system vulnerabilities through workflow orchestration

Answer: B

NEW QUESTION 97

A security analyst is conducting a post-incident log analysis to determine which indicators can be used to detect further occurrences of a data exfiltration incident. The analyst determines backups were not performed during this time and reviews the following:



Which of the following should the analyst review to find out how the data was exfiltrated?

- A. Monday's logs
- B. Tuesday's logs
- C. Wednesday's logs
- D. Thursday's logs

Answer: D

NEW QUESTION 101

A developer wrote a script to make names and other PII data unidentifiable before loading a database export into the testing system. Which of the following describes the type of control that is being used?

- A. Data encoding
- B. Data masking
- C. Data loss prevention
- D. Data classification

Answer: C

NEW QUESTION 102

An analyst is investigating an anomalous event reported by the SOC. After reviewing the system logs, the analyst identifies an unexpected addition of a user with root-level privileges on the endpoint. Which of the following data sources will BEST help the analyst to determine whether this event constitutes an incident?

- A. Patching logs
- B. Threat feed
- C. Backup logs
- D. Change requests
- E. Data classification matrix

Answer: D

NEW QUESTION 105

A malicious hacker wants to gather guest credentials on a hotel 802.11 network. Which of the following tools is the malicious hacker going to use to gain access to information found on the hotel network?

- A. Nikto
- B. Aircrack-ng
- C. Nessus
- D. tcpdump

Answer: A

NEW QUESTION 108

A security analyst has discovered that developers have installed browsers on all development servers in the company's cloud infrastructure and are using them to browse the Internet. Which of the following changes should the security analyst make to BEST protect the environment?

- A. Create a security rule that blocks Internet access in the development VPC
- B. Place a jumpbox in between the developers' workstations and the development VPC
- C. Remove the administrator profile from the developer user group in identity and access management
- D. Create an alert that is triggered when a developer installs an application on a server

Answer: A

NEW QUESTION 113

A security analyst is investigating a malware infection that occurred on a Windows system. The system was not connected to a network and had no wireless capability. Company policy prohibits using portable media or mobile storage. The security analyst is trying to determine which user caused the malware to get onto the system. Which of the following registry keys would MOST likely have this information?

- A)
`HKEY_USERS\<user SID>\Software\Microsoft\Windows\CurrentVersion\Run`
- B)
`HKEY_LOCAL_MACHINE\Software\Microsoft\Windows\CurrentVersion\Run`
- C)
`HKEY_USERS\<user SID>\Software\Microsoft\Windows\explorer\MountPoints2`
- D)
`HKEY_LOCAL_MACHINE\SYSTEM\ControlSet001\services\eventlog\System\iusb3hub`

- A. Option A
B. Option B
C. Option C
D. Option D

Answer: C

NEW QUESTION 114

The help desk provided a security analyst with a screenshot of a user's desktop:

```
S aircrack-ng -e AHT4 -w dictionary.txt wpa2.pcapdump
Opening wpa2.pcapdump
Read 6396 packets.
Opening wpa2.pcapdump
Reading packets, please wait...
```

For which of the following is aircrack-ng being used?

- A. Wireless access point discovery
B. Rainbow attack
C. Brute-force attack
D. PCAP data collection

Answer: B

NEW QUESTION 117

A network attack that is exploiting a vulnerability in the SNMP is detected. Which of the following should the cybersecurity analyst do FIRST?

- A. Apply the required patches to remediate the vulnerability.
B. Escalate the incident to senior management for guidance.
C. Disable all privileged user accounts on the network.
D. Temporarily block the attacking IP address.

Answer: A

NEW QUESTION 121

Which of the following technologies can be used to house the entropy keys for task encryption on desktops and laptops?

- A. Self-encrypting drive
B. Bus encryption
C. TPM
D. HSM

Answer: A

NEW QUESTION 123

During an investigation, an incident responder intends to recover multiple pieces of digital media. Before removing the media, the responder should initiate:

- A. malware scans.
B. secure communications.
C. chain of custody forms.
D. decryption tools.

Answer: C

NEW QUESTION 125

A new on-premises application server was recently installed on the network. Remote access to the server was enabled for vendor support on required ports, but recent security reports show large amounts of data are being sent to various unauthorized networks through those ports. Which of the following configuration changes must be implemented to resolve this security issue while still allowing remote vendor access?

- A. Apply a firewall application server rule.
B. Whitelist the application server.

- C. Sandbox the application server.
- D. Enable port security.
- E. Block the unauthorized networks.

Answer: B

NEW QUESTION 126

The help desk noticed a security analyst that emails from a new email server are not being sent out. The new email server was recently to the existing ones. The analyst runs the following command on the new server.

```
nslookup -type=txt exampledomain.org  
  
"v=spf1 ip4:72.56.48.0/28 -all"  
...
```

Given the output, which of the following should the security analyst check NEXT?

- A. The DNS name of the new email server
- B. The version of SPF that is being used
- C. The IP address of the new email server
- D. The DMARC policy

Answer: B

NEW QUESTION 129

As part of an exercise set up by the information security officer, the IT staff must move some of the network systems to an off-site facility and redeploy them for testing. All staff members must ensure their respective systems can power back up and match their gold image. If they find any inconsistencies, they must formally document the information.

Which of the following BEST describes this test?

- A. Walk through
- B. Full interruption
- C. Simulation
- D. Parallel

Answer: C

NEW QUESTION 131

During an investigation, a security analyst determines suspicious activity occurred during the night shift over the weekend. Further investigation reveals the activity was initiated from an internal IP going to an external website.

Which of the following would be the MOST appropriate recommendation to prevent the activity from happening in the future?

- A. An IPS signature modification for the specific IP addresses
- B. An IDS signature modification for the specific IP addresses
- C. A firewall rule that will block port 80 traffic
- D. A firewall rule that will block traffic from the specific IP addresses

Answer: D

NEW QUESTION 136

Which of the following software security best practices would prevent an attacker from being able to run arbitrary SQL commands within a web application? (Choose two.)

- A. Parameterized queries
- B. Session management
- C. Input validation
- D. Output encoding
- E. Data protection
- F. Authentication

Answer: AC

NEW QUESTION 138

An incident responder successfully acquired application binaries off a mobile device for later forensic analysis. Which of the following should the analyst do NEXT?

- A. Decompile each binary to derive the source code.
- B. Perform a factory reset on the affected mobile device.
- C. Compute SHA-256 hashes for each binary.
- D. Encrypt the binaries using an authenticated AES-256 mode of operation.
- E. Inspect the permissions manifests within each application.

Answer: C

NEW QUESTION 143

An information security analyst is reviewing backup data sets as part of a project focused on eliminating archival data sets.

Which of the following should be considered FIRST prior to disposing of the electronic data?

- A. Sanitization policy
- B. Data sovereignty

- C. Encryption policy
- D. Retention standards

Answer: D

NEW QUESTION 148

An employee in the billing department accidentally sent a spreadsheet containing payment card data to a recipient outside the organization. The employee intended to send the spreadsheet to an internal staff member with a similar name and was unaware of the mistake until the recipient replied to the message. In addition to retraining the employee, which of the following would prevent this from happening in the future?

- A. Implement outgoing filter rules to quarantine messages that contain card data
- B. Configure the outgoing mail filter to allow attachments only to addresses on the whitelist
- C. Remove all external recipients from the employee's address book
- D. Set the outgoing mail filter to strip spreadsheet attachments from all messages.

Answer: B

NEW QUESTION 151

Joe, a penetration tester, used a professional directory to identify a network administrator and ID administrator for a client's company. Joe then emailed the network administrator, identifying himself as the ID administrator, and asked for a current password as part of a security exercise. Which of the following techniques were used in this scenario?

- A. Enumeration and OS fingerprinting
- B. Email harvesting and host scanning
- C. Social media profiling and phishing
- D. Network and host scanning

Answer: C

NEW QUESTION 153

A system's authority to operate (ATO) is set to expire in four days. Because of other activities and limited staffing, the organization has neglected to start reauthentication activities until now. The cybersecurity group just performed a vulnerability scan with the partial set of results shown below:

```
-----  
Scan Host: 192.168.1.13  
15-Jan-16 08:12:10.1 EDT  
  
Vulnerability CVE-2015-1635  
HTTP.sys in Microsoft Windows 7 SP1, Windows Server 2008 R2 SP1, Windows 8,  
Windows 8.1 and Windows Server 2012 allows remote attackers to execute  
arbitrary code via crafted HTTP requests, aka "HTTP.sys remote code execution  
vulnerability"  
  
Severity: 10.0 (high)  
  
Expected Result: enforceHTTPValidation='enabled';  
Current Value: enforceHTTPValidation=enabled;  
  
Evidence:  
C:\%system%\Windows\config\web.config  
-----
```

Based on the scenario and the output from the vulnerability scan, which of the following should the security team do with this finding?

- A. Remediate by going to the web config file, searching for the enforce HTTP validation setting, and manually updating to the correct setting.
- B. Accept this risk for now because this is a "high" severity, but testing will require more than the four days available, and the system ATO needs to be completed.
- C. Ignore it
- D. This is false positive, and the organization needs to focus its efforts on other findings.
- E. Ensure HTTP validation is enabled by rebooting the server.

Answer: A

NEW QUESTION 158

A security analyst recently discovered two unauthorized hosts on the campus's wireless network segment from a man-in-the-middle attack. The security analyst also verified that privileges were not escalated, and the two devices did not gain access to other network devices. Which of the following would BEST mitigate and improve the security posture of the wireless network for this type of attack?

- A. Enable MAC filtering on the wireless router and suggest a stronger encryption for the wireless network.
- B. Change the SSID, strengthen the passcode, and implement MAC filtering on the wireless router.
- C. Enable MAC filtering on the wireless router and create a whitelist that allows devices on the network
- D. Conduct a wireless survey to determine if the wireless strength needs to be reduced.

Answer: A

NEW QUESTION 160

A large amount of confidential data was leaked during a recent security breach. As part of a forensic investigation, the security team needs to identify the various types of traffic that were captured between two compromised devices.

Which of the following should be used to identify the traffic?

- A. Carving
- B. Disk imaging
- C. Packet analysis
- D. Memory dump
- E. Hashing

Answer: C

NEW QUESTION 161

An organization suspects it has had a breach, and it is trying to determine the potential impact. The organization knows the following:

- The source of the breach is linked to an IP located in a foreign country.
- The breach is isolated to the research and development servers.
- The hash values of the data before and after the breach are unchanged.
- The affected servers were regularly patched, and a recent scan showed no vulnerabilities.

Which of the following conclusions can be drawn with respect to the threat and impact? (Choose two.)

- A. The confidentiality of the data is unaffected.
- B. The threat is an APT.
- C. The source IP of the threat has been spoofed.
- D. The integrity of the data is unaffected.
- E. The threat is an insider.

Answer: BD

NEW QUESTION 163

A security analyst received an alert from the SIEM indicating numerous login attempts from users outside their usual geographic zones, all of which were initiated through the web-based mail server. The logs indicate all domain accounts experienced two login attempts during the same time frame.

Which of the following is the MOST likely cause of this issue?

- A. A password-spraying attack was performed against the organization.
- B. A DDoS attack was performed against the organization.
- C. This was normal shift work activity; the SIEM's AI is learning.
- D. A credentialed external vulnerability scan was performed.

Answer: A

NEW QUESTION 166

An organization has several system that require specific logons Over the past few months, the security analyst has noticed numerous failed logon attempts followed by password resets. Which of the following should the analyst do to reduce the occurrence of legitimate failed logons and password resets?

- A. Use SSO across all applications
- B. Perform a manual privilege review
- C. Adjust the current monitoring and logging rules
- D. Implement multifactor authentication

Answer: B

NEW QUESTION 169

.....

Thank You for Trying Our Product

* 100% Pass or Money Back

All our products come with a 90-day Money Back Guarantee.

* One year free update

You can enjoy free update one year. 24x7 online support.

* Trusted by Millions

We currently serve more than 30,000,000 customers.

* Shop Securely

All transactions are protected by VeriSign!

100% Pass Your CS0-002 Exam with Our Prep Materials Via below:

<https://www.certleader.com/CS0-002-dumps.html>