



**Cisco**

## **Exam Questions 200-301**

Cisco Certified Network Associate

#### NEW QUESTION 1

What are two benefits of network automation? (Choose two)

- A. reduced operational costs
- B. reduced hardware footprint
- C. faster changes with more reliable results
- D. fewer network failures
- E. increased network security

**Answer:** AC

#### NEW QUESTION 2

When configuring IPv6 on an interface, which two IPv6 multicast groups are joined? (Choose two)

- A. 2000::/3
- B. 2002::5
- C. FC00::/7
- D. FF02::1
- E. FF02::2

**Answer:** DE

#### NEW QUESTION 3

Which option about JSON is true?

- A. uses predefined tags or angle brackets () to delimit markup text
- B. used to describe structured data that includes arrays
- C. used for storing information
- D. similar to HTML, it is more verbose than XML

**Answer:** B

#### NEW QUESTION 4

Which IPv6 address type provides communication between subnets and cannot route on the Internet?

- A. global unicast
- B. unique local
- C. link-local
- D. multicast

**Answer:** B

#### NEW QUESTION 5

What are two southbound APIs? (Choose two )

- A. OpenFlow
- B. NETCONF
- C. Thrift
- D. CORBA
- E. DSC

**Answer:** CD

#### NEW QUESTION 6

How does HSRP provide first hop redundancy?

- A. It load-balances traffic by assigning the same metric value to more than one route to the same destination in the IP routing table.
- B. It load-balances Layer 2 traffic along the path by flooding traffic out all interfaces configured with the same VLAN.
- C. It forwards multiple packets to the same destination over different routed links in the data path
- D. It uses a shared virtual IP and a virtual IP address to a group of routers that serve as the default gateway for hosts on a LAN

**Answer:** C

#### NEW QUESTION 7

A frame that enters a switch fails the Frame Check Sequence. Which two interface counters are incremented? (Choose two)

- A. runs
- B. giants
- C. frame
- D. CRC
- E. input errors

**Answer:** DE

NEW QUESTION 8

When OSPF learns multiple paths to a network, how does it select a route?

- A. It multiple the active K value by 256 to calculate the route with the lowest metric.
- B. For each existing interface, it adds the metric from the source router to the destination to calculate theroute with the lowest bandwidth.
- C. It divides a reference bandwidth of 100 Mbps by the actual bandwidth of the existing interface to calculate the router with the lowest cost.
- D. It count the number of hops between the source router and the destination to determine the router with the lowest metric

Answer: A

NEW QUESTION 9

A Cisco IP phone receive untagged data traffic from an attached PC. Which action is taken by the phone?

- A. It allows the traffic to pass through unchanged
- B. It drops the traffic
- C. It tags the traffic with the default VLAN
- D. It tags the traffic with the native VLAN

Answer: C

NEW QUESTION 10

Drag and drop the Cisco Wireless LAN Controller security settings from the left onto the correct security mechanism categories on the right.

web policy

Passthrough

WPA+WPA2

802.1X

Layer 2 Security Mechanisms

Layer 3 Security Mechanisms (for WLAN)

- A. Mastered
- B. Not Mastered

Answer: A

Explanation:

web policy

Passthrough

WPA+WPA2

802.1X

Layer 2 Security Mechanisms

Passthrough

802.1X

Layer 3 Security Mechanisms (for WLAN)

WPA+WPA2

web policy

NEW QUESTION 10

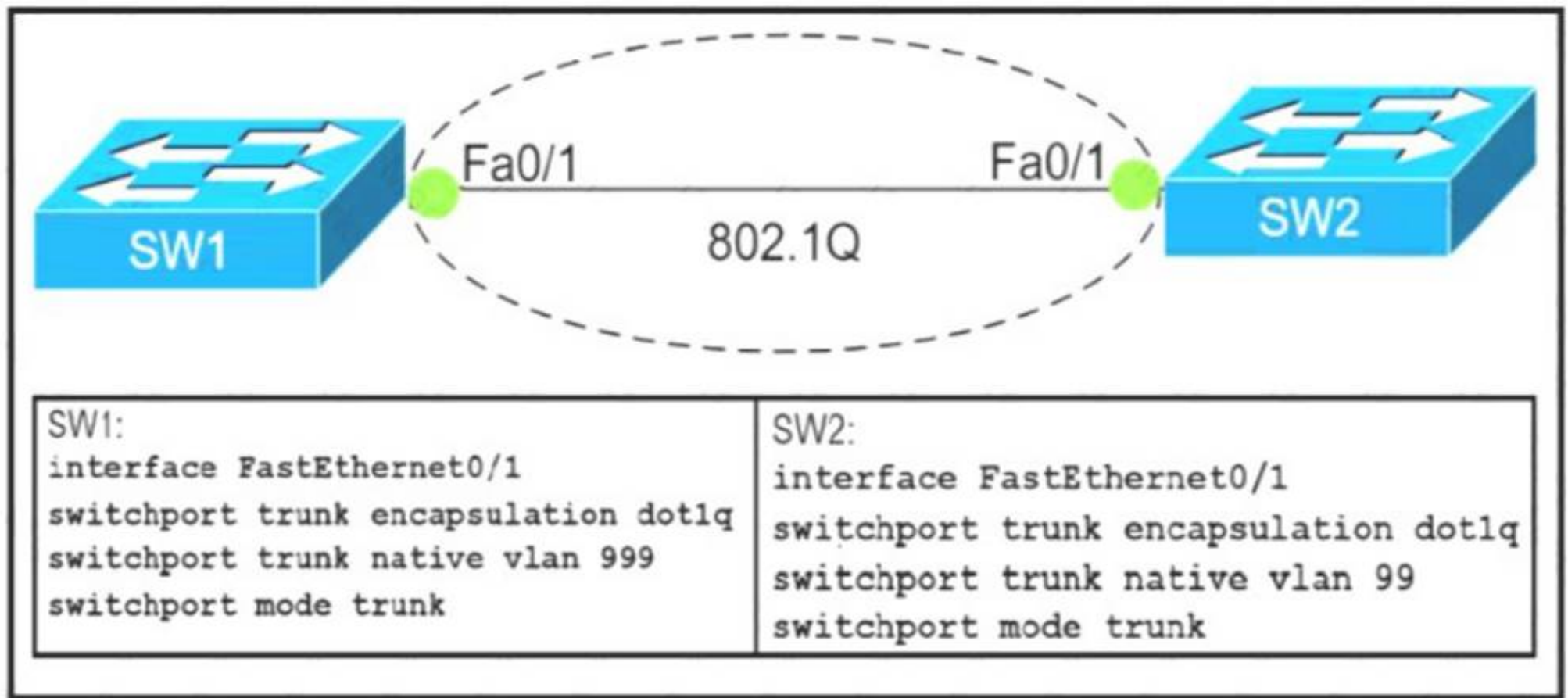
What are two reasons that cause late collisions to increment on an Ethernet interface? (Choose two)

- A. when the sending device waits 15 seconds before sending the frame again
- B. when the cable length limits are exceeded
- C. when one side of the connection is configured for half-duplex
- D. when Carner Sense Multiple Access/Collision Detection is used
- E. when a collision occurs after the 32nd byte of a frame has been transmitted

Answer: CE

#### NEW QUESTION 15

Refer to Exhibit.



Which action do the switches take on the trunk link?

- A. The trunk does not form and the ports go into an err-disabled status.
- B. The trunk forms but the mismatched native VLANs are merged into a single broadcast domain.
- C. The trunk does not form, but VLAN 99 and VLAN 999 are allowed to traverse the link.
- D. The trunk forms but VLAN 99 and VLAN 999 are in a shutdown state.

Answer: C

#### NEW QUESTION 18

An engineer configured an OSPF neighbor as a designated router. Which state verifies the designated router is in the proper mode?

- A. Exchange
- B. 2-way
- C. Full
- D. Init

Answer: B

#### NEW QUESTION 21

Refer to the exhibit.



```

Designated Router (ID) 10.11.11.11, Interface address 10.10.10.1
Backup Designated router (ID) 10.3.3.3, Interface address 10.10.10.3
Timer intervals configured, Hello 10, Dead 40, Wait 40, Retransmit 5
oob-resync timeout 40
Hello due in 00:00:08
Supports Link-local Signaling (LLS)
Cisco NSF helper support enabled
IETF NSF helper support enabled
Index 1/1/1, flood queue length 0
Next 0x0(0)/0x0(0)/0x0(0)
Last flood scan length is 1, maximum is 6
Last flood scan time is 0 msec, maximum is 1 msec
Neighbor Count is 3, Adjacent neighbor count is 3
Adjacent with neighbor 10.1.1.4
Adjacent with neighbor 10.2.2.2
Adjacent with neighbor 10.3.3.3 (Backup Designated Router)
Suppress hello for 0 neighbor(s)
    
```

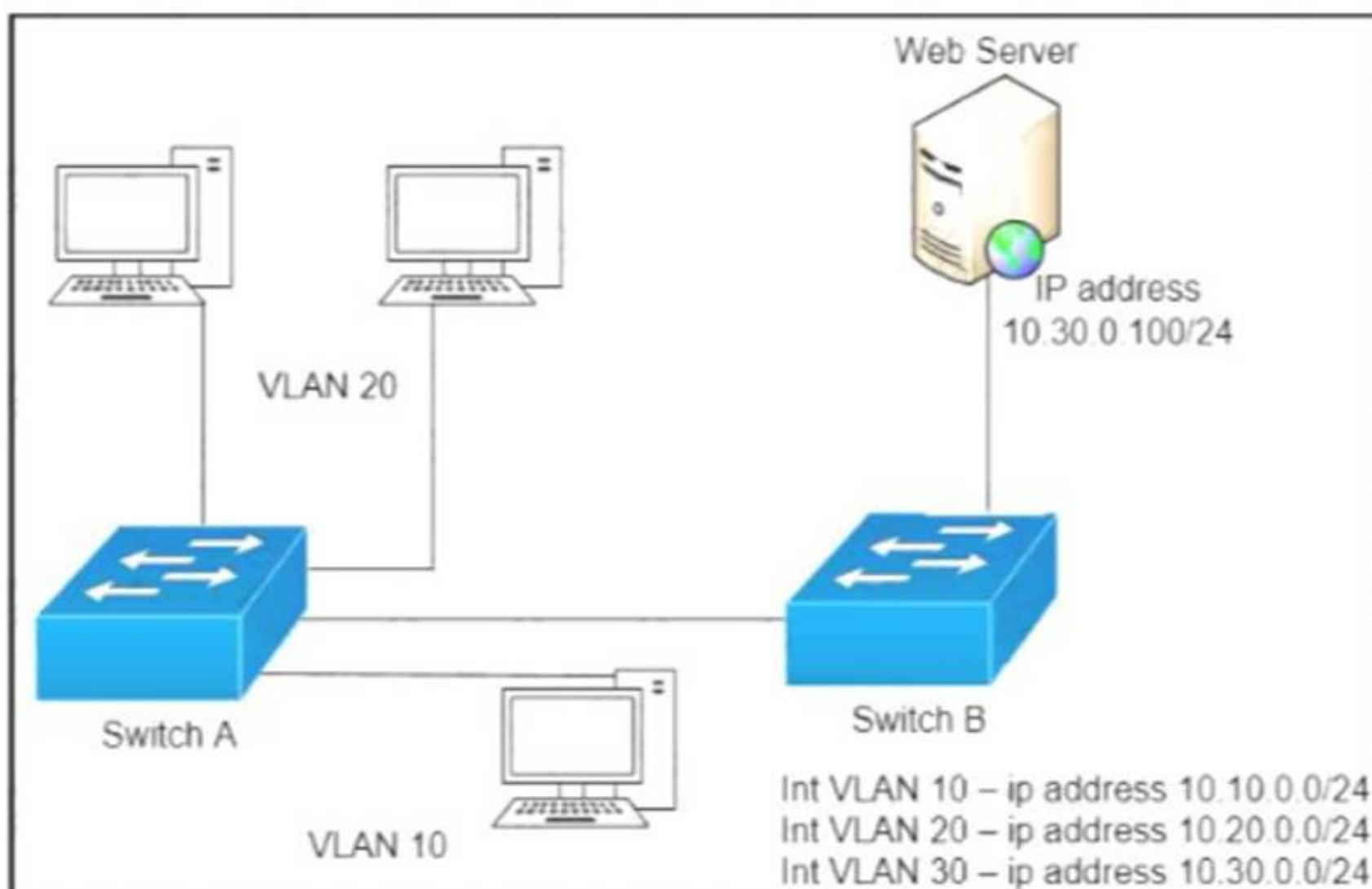
The show ip ospf interface command has been executed on R1 How is OSPF configured?

- A. The interface is not participating in OSPF
- B. A point-to-point network type is configured
- C. The default Hello and Dead timers are in use
- D. There are six OSPF neighbors on this interface

**Answer:** A

#### NEW QUESTION 23

Refer to the exhibit.



A network engineer must block access for all computers on VLAN 20 to the web server via HTTP. All other computers must be able to access the web server. Which configuration, when applied to switch A, accomplishes this task?

```
config t
ip access-list extended wwwblock
deny tcp any host 10.30.0.100 eq 80
int vlan 10
ip access-group wwwblock in
```

```
config t
ip access-list extended wwwblock
deny tcp any host 10.30.0.100 eq 80
permit ip any any
int vlan 20
ip access-group wwwblock in
```

```
config t
ip access-list extended wwwblock
permit ip any any
deny tcp any host 10.30.0.100 eq 80
int vlan 30
ip access-group wwwblock in
```

```
config t
ip access-list extended wwwblock
permit ip any any
deny tcp any host 10.30.0.100 eq 80
int vlan 20
ip access-group wwwblock in
```

- A. Option A
- B. Option B
- C. Option C
- D. Option D

**Answer:** B

#### NEW QUESTION 24

A user configured OSPF in a single area between two routers. A serial interface connecting R1 and R2 is running encapsulation PPP. By default, which OSPF network type is seen on this interface when the user types `show ip ospf interface` on R1 or R2?

- A. port-to-multipoint
- B. broadcast
- C. point-to-point
- D. nonbroadcast

**Answer:** C

#### NEW QUESTION 26

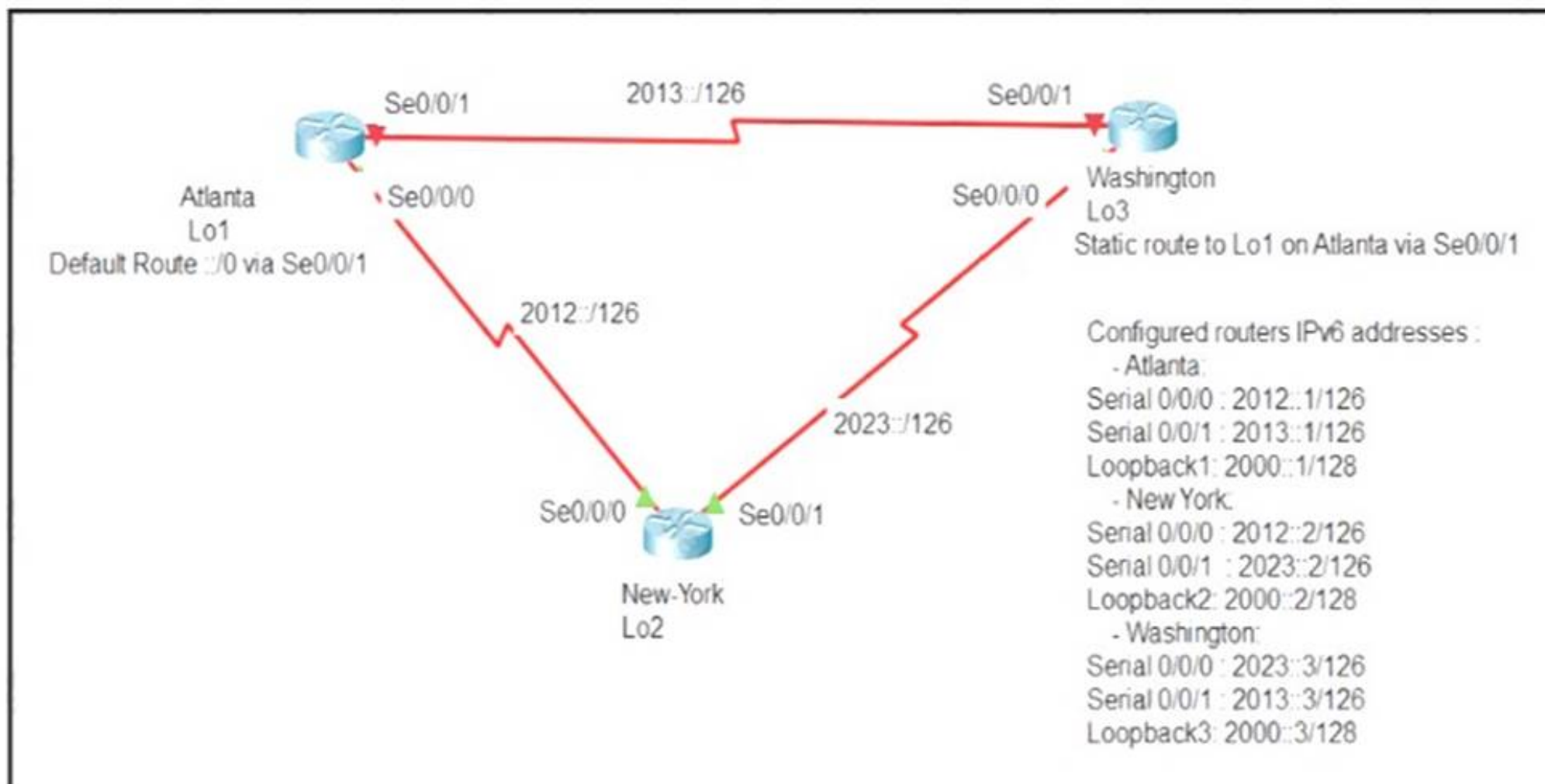
A user configured OSPF and advertised the Gigabit Ethernet interface in OSPF. By default, which type of OSPF network does this interface belong to?

- A. point-to-multipoint
- B. point-to-point
- C. broadcast
- D. nonbroadcast

**Answer:** B

#### NEW QUESTION 31

Refer to Exhibit.



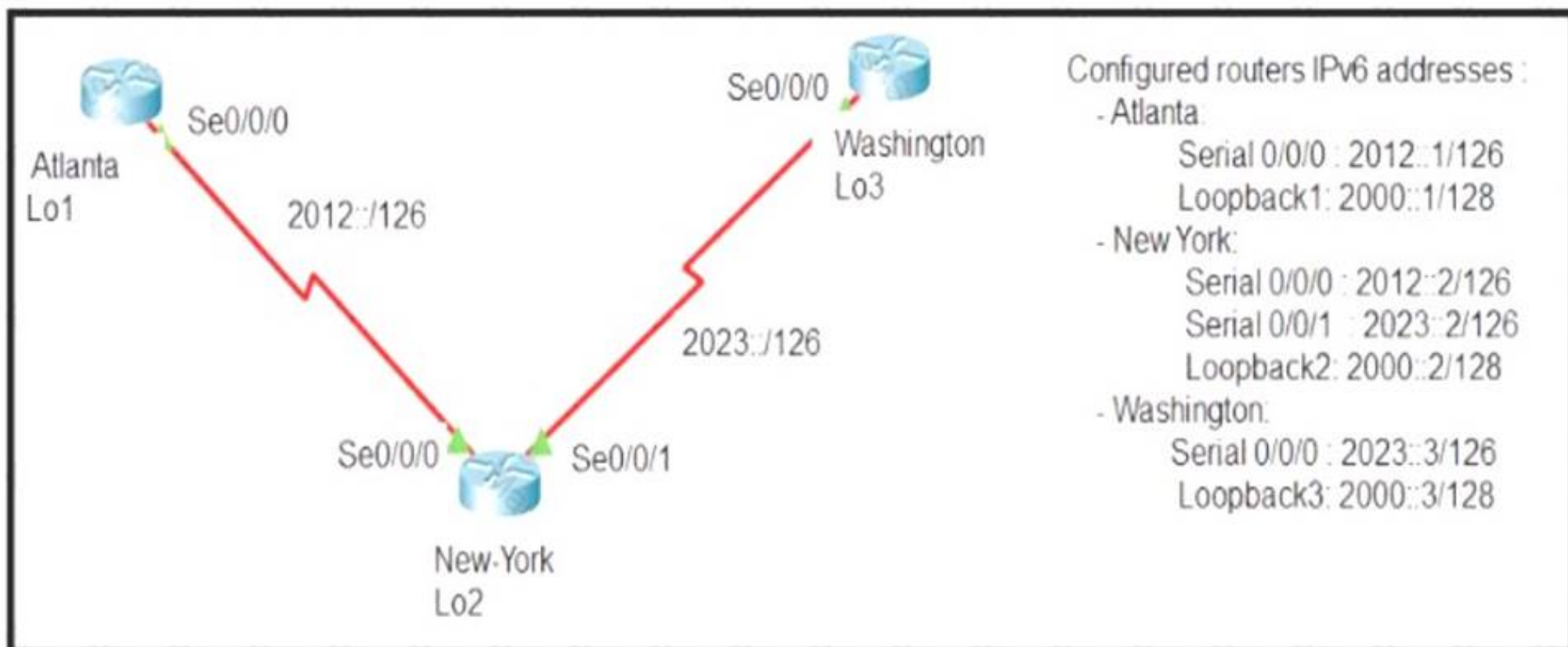
An engineer is configuring the NEW York router to reach the Lo1 interface of the Atlanta router using interface Se0/0/0 as the primary path. Which two commands must be configured on the New York router so that it can reach the Lo1 interface of the Atlanta router via Washington when the link between New York and Atlanta goes down? (Choose two)

- A. ipv6 router 2000::1/128 2012::1
- B. ipv6 router 2000::1/128 2012::1 5
- C. ipv6 router 2000::1/128 2012::2
- D. ipv6 router 2000::1/128 2023::2 5
- E. ipv6 router 2000::1/128 2023::3 5

Answer: DE

### NEW QUESTION 32

Refer to the exhibit.



The New York router is configured with static routes pointing to the Atlanta and Washington sites. Which two tasks must be performed so that the Serial0/0/0 interfaces on the Atlanta and Washington routers can reach one another? (Choose two.)

- A. Configure the ipv6 route 2012::/126 2023::1 command on the Washington router
- B. Configure the ipv6 route 2023::/126 2012::1 command on the Atlanta router.
- C. Configure the Ipv6 route 2012::/126 s0/0/0 command on the Atlanta router
- D. Configure the ipv6 route 2023::/126 2012::2 command on the Atlanta router
- E. Configure the ipv6 route 2012::/126 2023::2 command on the Washington router

Answer: CE

### NEW QUESTION 36



Refer to exhibit.

```
Router(config)#interface GigabitEthernet 1/0/1
Router(config-if)#ip address 192.168.16.143 255.255.255.240
Bad mask /28 for address 192.168.16.143
```

Which statement explains the configuration error message that is received?

- A. It is a broadcast IP address
- B. The router does not support /28 mask.
- C. It belongs to a private IP address range.
- D. IT is a network IP address.

Answer: A

NEW QUESTION 37

What makes Cisco DNA Center different from traditional network management applications and their management of networks?

- A. It only supports auto-discovery of network elements in a greenfield deployment.
- B. It modular design allows someone to implement different versions to meet the specific needs of an organization
- C. IT abstracts policy from the actual device configuration
- D. It does not support high availability of management functions when operating in cluster mode

Answer: A

NEW QUESTION 39

Drag and drop the descriptions of file-transfer protocols from the left onto the correct protocols on the right.

provides reliability when loading an IOS image upon boot up

does not require user authentication

uses port 69

uses ports 20 and 21

uses TCP

uses UDP

FTP

TFTP

- A. Mastered
- B. Not Mastered

Answer: A

Explanation:



provides reliability when loading an IOS image upon boot up

does not require user authentication

uses port 69

uses ports 20 and 21

uses TCP

uses UDP

**FTP**

provides reliability when loading an IOS image upon boot up

uses ports 20 and 21

uses TCP

**TFTP**

does not require user authentication

uses port 69

uses UDP

#### NEW QUESTION 42

Refer to the exhibit.

```
R1#show ip interface brief
Interface                IP-Address      OK? Method Status      Protocol
FastEthernet0/0          unassigned      YES NVRAM    administratively down down
GigabitEthernet1/0       192.168.0.1     YES NVRAM    up          up
GigabitEthernet2/0       10.10.1.10      YES manual    up          up
GigabitEthernet3/0       10.10.10.20     YES manual    up          up
GigabitEthernet4/0       unassigned      YES NVRAM    administratively down down
Loopback0                 172.16.15.10    YES manual    up          up
```

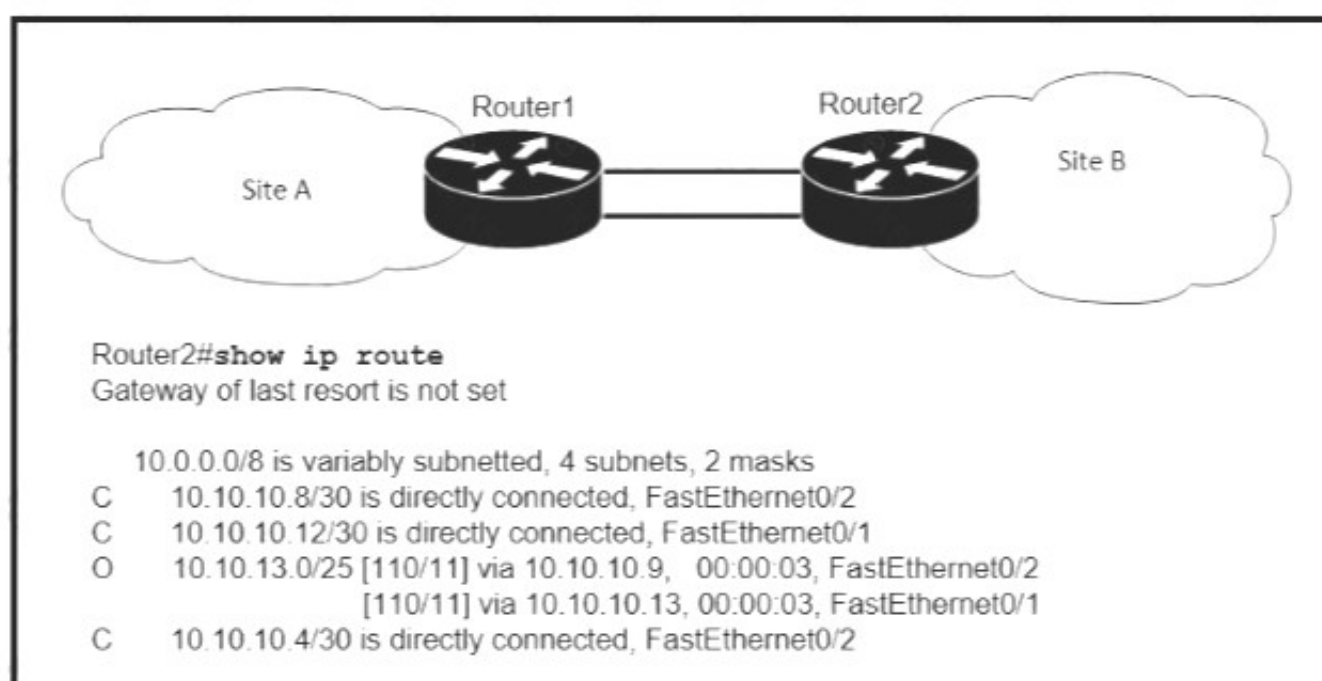
What does router R1 use as its OSPF router-ID?

- A. 10.10.1.10
- B. 10.10.10.20
- C. 172.16.15.10
- D. 192.168.0.1

Answer: B

#### NEW QUESTION 47

Refer to the exhibit.



If OSPF is running on this network, how does Router 2 handle traffic from Site B to 10.10.13/25 at Site A?

- A. It sends packets out of interface Fa0/2 only.
- B. It sends packets out of interface Fa0/1 only.

- C. It cannot send packets to 10.10.13 128/25
- D. It load-balances traffic out of Fa0/1 and Fa0/2

**Answer:** D

#### NEW QUESTION 50

If a notice-level messaging is sent to a syslog server, which event has occurred?

- A. A network device has restarted
- B. An ARP inspection has failed
- C. A routing instance has flapped
- D. A debug operation is running

**Answer:** A

#### NEW QUESTION 51

Refer to the exhibit.

```
Gateway of last resort is 10.12.0.1 to network 0.0.0.0

O*E2   0.0.0.0/0 [110/1] via 10.12.0.1, 00:00:01, GigabitEthernet0/0
       10.0.0.0/8 is variably subnetted, 2 subnets, 2 masks
C       10.0.0.0/24 is directly connected, GigabitEthernet0/0
L       10.0.0.2/32 is directly connected, GigabitEthernet0/0
C       10.13.0.0/24 is directly connected, GigabitEthernet0/1
L       10.13.0.2/32 is directly connected, GigabitEthernet0/1
```

If configuring a static default route on the router with the ip route 0.0.0.0 0.0.0.0 10.13.0.1 120 command how does the router respond?

- A. It ignores the new static route until the existing OSPF default route is removed
- B. It immediately replaces the existing OSPF route in the routing table with the newly configured static route
- C. It starts load-balancing traffic between the two default routes
- D. It starts sending traffic without a specific matching entry in the routing table to GigabitEthernetO/1

**Answer:** D

#### NEW QUESTION 53

Which statement about Link Aggregation when implemented on a Cisco Wireless LAN Controller is true?

- A. To pass client traffic two or more ports must be configured.
- B. The EtherChannel must be configured in "mode active"
- C. When enabled the WLC bandwidth drops to 500 Mbps
- D. One functional physical port is needed to pass client traffic

**Answer:** C

#### NEW QUESTION 55

.....

## Thank You for Trying Our Product

### We offer two products:

1st - We have Practice Tests Software with Actual Exam Questions

2nd - Questions and Answers in PDF Format

### 200-301 Practice Exam Features:

- \* 200-301 Questions and Answers Updated Frequently
- \* 200-301 Practice Questions Verified by Expert Senior Certified Staff
- \* 200-301 Most Realistic Questions that Guarantee you a Pass on Your First Try
- \* 200-301 Practice Test Questions in Multiple Choice Formats and Updates for 1 Year

**100% Actual & Verified — Instant Download, Please Click**  
**[Order The 200-301 Practice Test Here](#)**