



**HP**

## **Exam Questions HPE6-A72**

Aruba Certified Switching Associate Exam

## About ExamBible

*[Your Partner of IT Exam](#)*

## Found in 1998

ExamBible is a company specialized on providing high quality IT exam practice study materials, especially Cisco CCNA, CCDA, CCNP, CCIE, Checkpoint CCSE, CompTIA A+, Network+ certification practice exams and so on. We guarantee that the candidates will not only pass any IT exam at the first attempt but also get profound understanding about the certificates they have got. There are so many alike companies in this industry, however, ExamBible has its unique advantages that other companies could not achieve.

## Our Advances

### \* 99.9% Uptime

All examinations will be up to date.

### \* 24/7 Quality Support

We will provide service round the clock.

### \* 100% Pass Rate

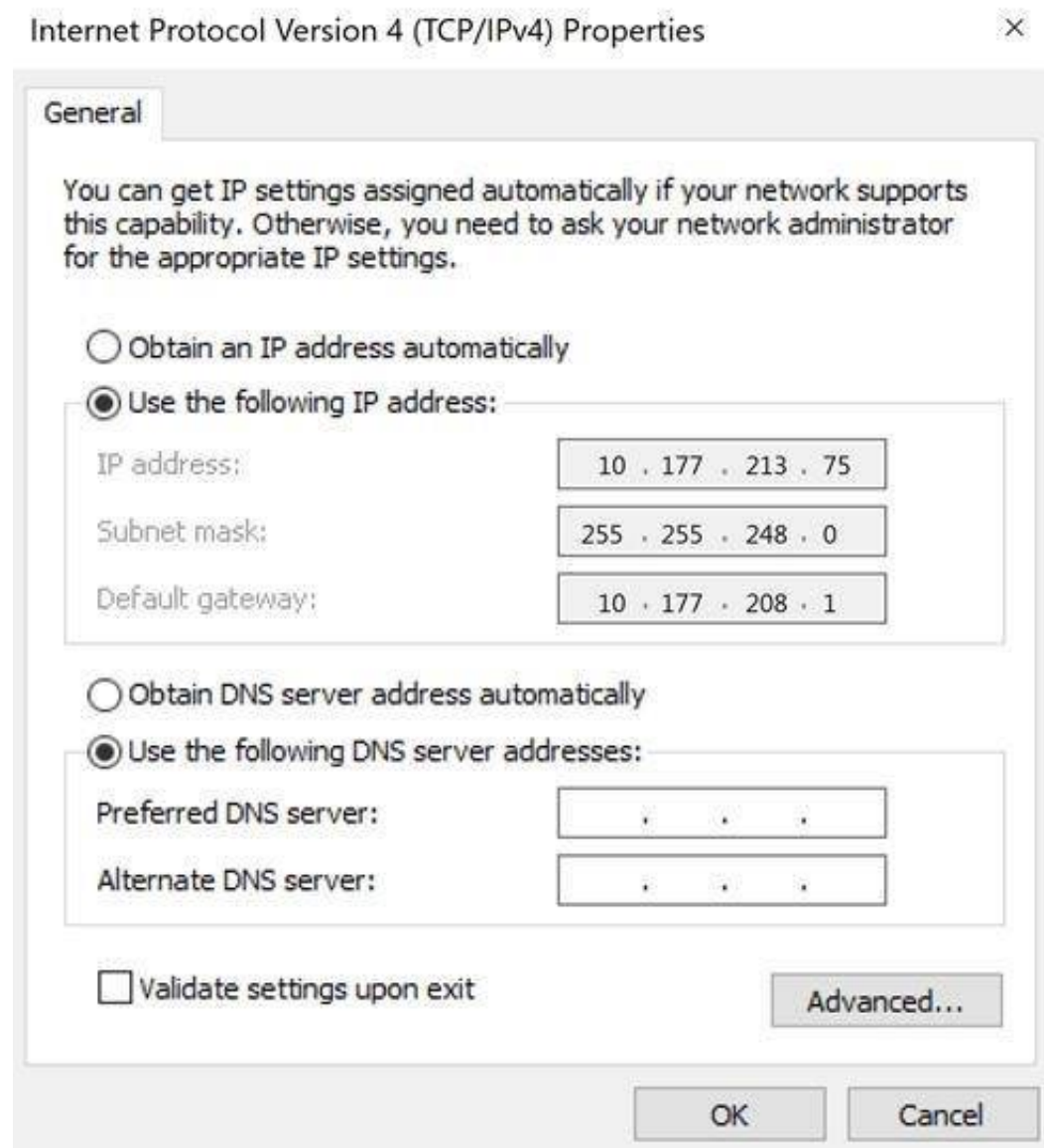
Our guarantee that you will pass the exam.

### \* Unique Gurantee

If you do not pass the exam at the first time, we will not only arrange FULL REFUND for you, but also provide you another exam of your claim, ABSOLUTELY FREE!

### NEW QUESTION 1

Refer to the exhibit.



Using the static IP address configured above, what is the converted binary value of the third octet assigned to the local interface?

- A. 11010101
- B. 10110001
- C. 01001011
- D. 11111000

**Answer:** A

### NEW QUESTION 2

What is true about VSX? (Choose two.)

- A. VSX is ideal for Campus access layer deployments where ease of deployment is needed.
- B. VSX allows upgrading members with near zero downtime or loss of packets.
- C. VSX is available on all Aruba OS-CX switches except the 6300F model.
- D. VSX is implemented on static port switch
- E. VSX-plus needed to stack chassis together.
- F. VSX run separate control planes to reduce latency and improve performance.

**Answer:** BE

### NEW QUESTION 3

ServiceOS login: admin

SVOS> password

Enter password: \*\*\*\*\*

Confirm password: \*\*\*\*\*

The login password to access an Aruba AOS-CX was lost. After connecting to the switch console port, a reboot is performed and the Service OS console is accessed as shown above. What is the default password that is required for the admin account while under the Service OS console?

- A. No password is set for this account.
- B. "password"
- C. "forgetme!"
- D. The same login password that has lost originally.

**Answer:** C

### NEW QUESTION 4

What are two features of the three-tier designs? (Choose two.)

- A. removes the distribution layer in favor of a spine-leaf design used in modern data center deployments
- B. adds a distribution layer to free up resources from the Core for improved performance and routing throughput
- C. a more scalable design over by leveraging a distribution layer to handle Layer 3 routing and access control in large deployments

- D. uses only Layer 2 access on the Access and the Core with Layer 3 routing and access control provided at the distribution layer  
 E. is considered legacy by requiring a large flat layer-two broadcast domain from Core to Access and should be avoided

**Answer:** BC

#### NEW QUESTION 5

The section in blue can be ignored.

SW1(config)# interface 1/1/1-1/1/2

SW1(config-if-<1/1/1-1/1/2)# vlan access 2

SW1(config-if-<1/1/1-1/1/2)# exit

SW1(config)# interface 1/1/11-1/1/17

SW1(config-if-<1/1/11-1/1/17)# vlan access 17

SW1(config-if-<1/1/11- 1/1/17)# exit

After completing the above commands, what is the expected output of show vlan with no other vlan commanded having been added?

A. **SW1# show vlan**

VLAN	Name	Status	Reason	Type	Interfaces
1	DEFAULT_VLAN_1	up	ok	default	1/1/2
2		up	ok	static	1/1/2
11		up	ok	static	1/1/17
12		up	ok	static	1/1/17
13		up	ok	static	1/1/17
14		up	ok	static	1/1/17
15		up	ok	static	1/1/17
16		up	ok	static	1/1/17
17		up	ok	static	1/1/17

B. **SW1# show vlan**

VLAN	Name	Status	Reason	Type	Interfaces
1	DEFAULT_VLAN_1	up	ok	default	1/1/1-1/1/24
2		up	ok	static	1/1/1-1/1/2
17		up	ok	static	1/1/11-1/1/17

C. **SW1# show vlan**

VLAN	Name	Status	Reason	Type	Interfaces
2	DEFAULT_VLAN_2	up	ok	static	1/1/1-1/1/2
17		up	ok	static	1/1/11-1/1/17

D. **SW1# show vlan**

VLAN	Name	Status	Reason	Type	Interfaces
1	DEFAULT_VLAN_1	up	ok	default	<output omitted>
2		up	ok	static	1/1/1-1/1/2
17		up	ok	static	1/1/11-1/1/17

**Answer:** D

#### NEW QUESTION 6

What are two OSPF attributes within the hello messages that must match to successfully establish neighbor relationships? (Choose two.)

- A. Router ID  
 B. Priority  
 C. Hello and Dead intervals  
 D. Area ID  
 E. Process ID

**Answer:** CD

#### NEW QUESTION 7

Your customer has 349 users in a two-story building.

What are two benefits of a 2-Tier design? (Choose two.)

- A. Layer 2 and Layer 3 protocols run close to the endpoints to better implement ACL and QoS policy at the edge.  
 B. Improved performance by offloading processing from the Access layer to the Core.  
 C. Use of layer 2 switches at the access layer can process and route traffic from attached APs.  
 D. Support for WAN/MPLS, Internet, and Data Center directly on the Collapsed core.  
 E. Provides a more cost effective solution given that no additional switches are required for a third tier.

**Answer:** AE

#### NEW QUESTION 8

Which two options are the Layer 3 Routing protocols? (Choose two.)

- A. BGP
- B. LLDP
- C. OSPF
- D. MPLS
- E. 802.3ad

**Answer:** AC

#### NEW QUESTION 9

What are the commands to disable SSH and HTTPS services from the default VRF?

- A. Core-1(config)# no ssh server Core-1(config)# no https-server
- B. Core-1# no ssh server vrf default Core-1# no https-server vrf default
- C. Core-1(config)# no ssh server enable Core-1(config)# no https-server enable
- D. Core-1(config)# no ssh server vrf default Core-1(config)# no https-server vrf default

**Answer:** D

#### NEW QUESTION 10

What is the binary conversion of the hexadecimal value 0x2001?

- A. 0010 0001
- B. 0002 0000 0000 0001
- C. 0011 0000 0000 0001
- D. 0010 0000 0000 0001

**Answer:** D

#### NEW QUESTION 10

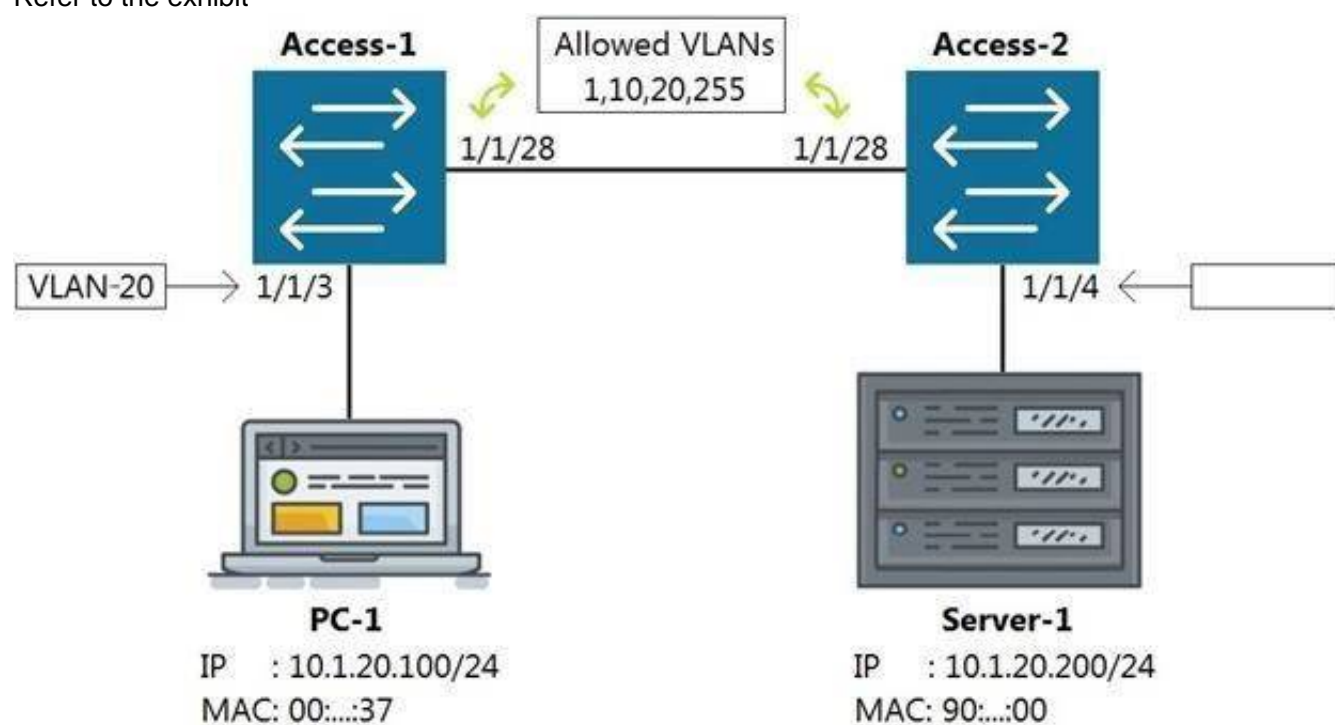
What command displays information regarding the secondary image installed on an AOS-CX switch?

- A. show secondary
- B. show version detail
- C. show version
- D. show images

**Answer:** D

#### NEW QUESTION 14

Refer to the exhibit



Which command on Access-2 port 1/1/4 will enable connectivity between PC-1 and Server-1 without any routing enabled in the network?

- A. Access-2 (config-if-1/1/4)# vlan access 1, 10, 20, 255
- B. Access-2 (config-if-1/1/4)# vlan access 20
- C. Access-2 (config-if-1/1/4)# vlan 20 untag 1/1/4
- D. Access-2 (config-if-1/1/4)# vlan trunk allow 1, 10, 255

**Answer:** B

#### NEW QUESTION 16

What are the benefits of a 3-Tier design over a 2-Tier? (Choose two.)

- A. Offloading processing from the Core without routing at the Access layer.
- B. Can use lower speed links between Core to Aggregation and Aggregation to Access given the use of an Aggregation layer.

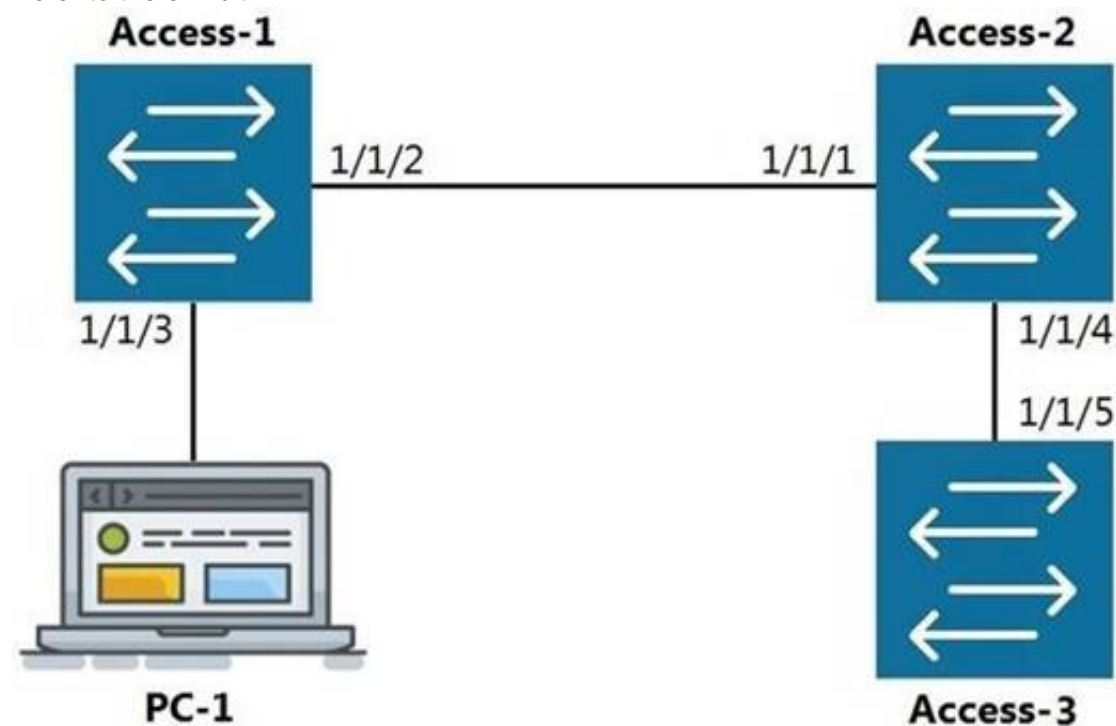


- C. Lowering the cost of a deployment due to needing less switches overall.
- D. Better scalability in a campus with a large number of buildings.
- E. Gaining the flexibility to connect the Data-Center to any Access layer switch.

**Answer:** AD

#### NEW QUESTION 20

Refer to the exhibit.



LLDP

The command show LLDP neighbor-info gets typed into Access-1. All switches are Aruba OS-CX switches.

What is the output of this command?

- A.
- | LOCAL-PORT | CHASSIS-ID        | PORT-ID | PORT-DESC | TTL | SYS-NAME |
|------------|-------------------|---------|-----------|-----|----------|
| 1/1/1      | 90:20:c2:bc:ed:00 | 1/1/2   | 1/1/2     | 120 | Access-2 |
| 1/1/5      | 90:20:c2:bc:ef:00 | 1/1/2   | 1/1/2     | 120 | Access-3 |
- B.
- | LOCAL-PORT | CHASSIS-ID        | PORT-ID | PORT-DESC | TTL | SYS-NAME |
|------------|-------------------|---------|-----------|-----|----------|
| 1/1/1      | 90:20:c2:bc:ed:00 | 1/1/2   | 1/1/2     | 120 | Access-2 |
- C.
- | LOCAL-PORT | CHASSIS-ID        | PORT-ID | PORT-DESC | TTL | SYS-NAME |
|------------|-------------------|---------|-----------|-----|----------|
| 1/1/2      | 90:20:c2:bc:ed:00 | 1/1/1   | 1/1/1     | 120 | Access-2 |
| 1/1/2      | 90:20:c2:bc:ef:00 | 1/1/5   | 1/1/5     | 120 | Access-3 |
- D.
- | LOCAL-PORT | CHASSIS-ID        | PORT-ID | PORT-DESC | TTL | SYS-NAME |
|------------|-------------------|---------|-----------|-----|----------|
| 1/1/2      | 90:20:c2:bc:ed:00 | 1/1/1   | 1/1/1     | 120 | Access-2 |

**Answer:** D

#### NEW QUESTION 25

What is the process where a compute device converts logical data bits into the correct physical representation depending on the media?

- A. Demodulation
- B. Modulation
- C. Propagation
- D. Encapsulation

**Answer:** D

#### NEW QUESTION 30

Which two statements are true regarding Checkpoints on Aruba switches? (Choose two.)

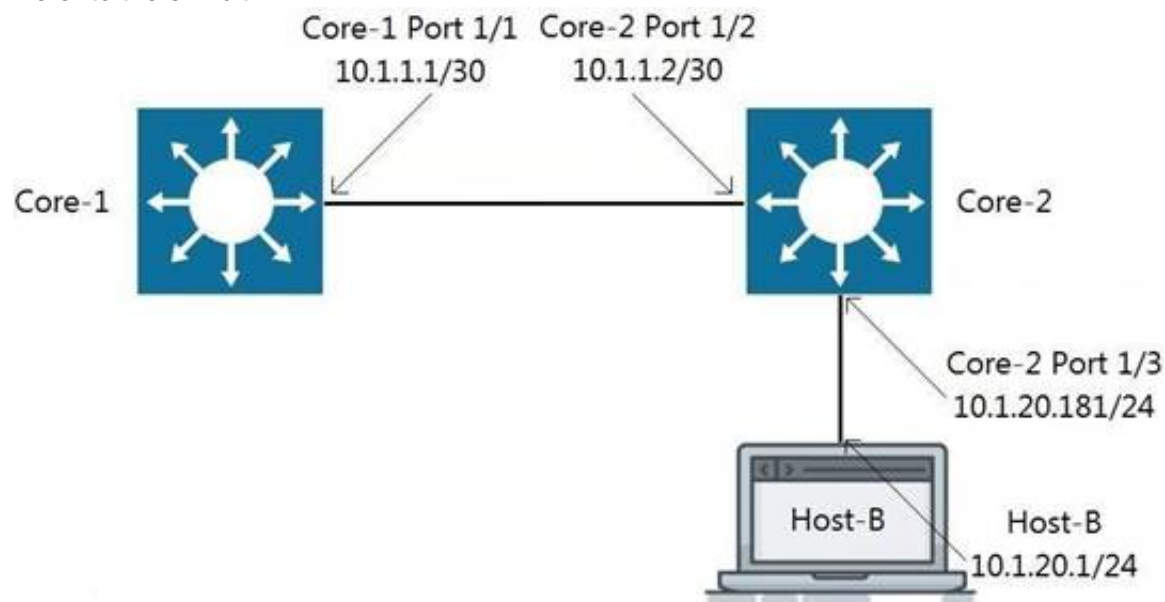
- A. Rolling back to a prior checkpoint triggers a reboot of the switch.
- B. Stacking switches using VSF or VSX will disable the Checkpoint feature.

- C. A checkpoint is a snapshot of the running-configuration and relevant metadata at the time the checkpoint was created.  
D. System-generated checkpoints are created after a configuration change and 5 minutes of inactivity.  
E. Checkpoints are available on AOS 5400R switches, as well as on all AOS-CX switches.

**Answer:** CE

#### NEW QUESTION 31

Refer to the exhibit.



Traffic is failing between Core-1 and Host-B. IP addressing has correctly been applied, and all interfaces are attached to the vrf GREEN. Which configuration will correct the issue?

- A. Core-2(config)# ip route 0.0.0.0/0 10.1.1.1 vrf GREEN Host-B: assign the default-gateway address 10.1.20.181  
B. Core-1(config)# ip route 10.1.20.0/24 10.1.1.2 vrf GREEN Host-B: assign the default-gateway address 10.1.20.181  
C. Core-1(config)# ip route 10.1.20.0/24 10.1.1.2 vrf GREEN Host-B: assign the default-gateway address 10.1.20.1  
D. Host-B: assign the default-gateway address 10.1.20.181

**Answer:** B

#### NEW QUESTION 36

What is an available command on an Aruba AOS-CX switch that would back up the secondary image to a secure remote repository?

- A. backup secondary sftp://admin@10.1.1.21/GL.10.04.0003.swi  
B. copy secondary sftp://admin@10.1.1.21/GL.10.04.0003.swi  
C. copy sftp://admin@10.1.1.21/GL.10.04.0003.swi secondary  
D. copy secondary tftp://admin@10.1.1.21/GL.10.04.0003.swi

**Answer:** B

#### NEW QUESTION 39

Refer to the exhibit.



You are in the process of configuring VSF between Access-1 and Access-2. Access-1 has been configured as the VSF Master. What is a valid configuration for Access-2 to join the VSF stack?

- A. Access-2# configureAccess-2(config)# vsf member 1 Access-2(config)# vsf renumber-to 2 Access-2(vsf-member-1)# link 2 2/1/28 Access-2(vsf-member-1)# exitThis will save the VSF configuration and reboot the switc  
B. Do you want to continue (y/n)? y  
C. Access-2# configureAccess-2(config)# vsf member 2 Access-2(vsf-member-1)# link 2 1/1/28 Access-2(vsf-member-1)# exitThis will save the VSF configuration and reboot the switc  
D. Do you want to continue (y/n)? y  
E. Access-2# configureAccess-2(config)# vsf member 2 Access-2(vsf-member-1)# link 1 1/1/28 Access-2(vsf-member-1)# exitThis will save the VSF configuration and reboot the switch.Do you want to continue (y/n)? y  
F. Access-2# configureAccess-2(config)# vsf member 1 Access-2(vsf-member-1)# link 1 1/1/28 Access-2(vsf-member-1)# exitAccess-2(config)# vsf renumber-to 2This will save the VSF configuration and reboot the switc  
G. Do you want to continue (y/n)? y

**Answer:** C

#### NEW QUESTION 43

DRAG DROP

Match each description to the correct management tool for Aruba AOS-CX.

Select and Place:

Management Tools	Answer Area	
	Management Tool	Description
NetEdit		can run as an OVA
Aruba CX Mobile App		requires AOS-CX switches to support HTTPS, SSH, and REST access
		connects to switches via Bluetooth or Wi-Fi
		includes a feature for stacking automation
		supports SNMPv2c to discover third-party devices

- A. Mastered
- B. Not Mastered

Answer: A

Explanation:

Management Tools	Answer Area	
	Management Tool	Description
NetEdit	NetEdit	can run as an OVA
Aruba CX Mobile App	NetEdit	requires AOS-CX switches to support HTTPS, SSH, and REST access
	Aruba CX Mobile App	connects to switches via Bluetooth or Wi-Fi
	Aruba CX Mobile App	includes a feature for stacking automation
	NetEdit	supports SNMPv2c to discover third-party devices

#### NEW QUESTION 47

DRAG DROP

Match the term to the correct description.

Term	Description	
BGP		used for creating backup routes by implementing a higher administrative distance
Floating Static Routes		a distance vector protocol
OSPFv2		an ipv4 link-state routing protocol that runs within an Autonomous System
OSPFv3		used to route traffic between Autonomous Systems
RIPv2		a routing protocol capable of routing IPv6 packets

- A. Mastered
- B. Not Mastered

Answer: A

Explanation:



Term		Description
BGP	Floating Static Routes	used for creating backup routes by implementing a higher administrative distance
Floating Static Routes	RIPv2	a distance vector protocol
OSPFv2	OSPFv2	an ipv4 link-state routing protocol that runs within an Autonomous System
OSPFv3	BGP	used to route traffic between Autonomous Systems
RIPv2	OSPFv3	a routing protocol capable of routing IPv6 packets

#### NEW QUESTION 51

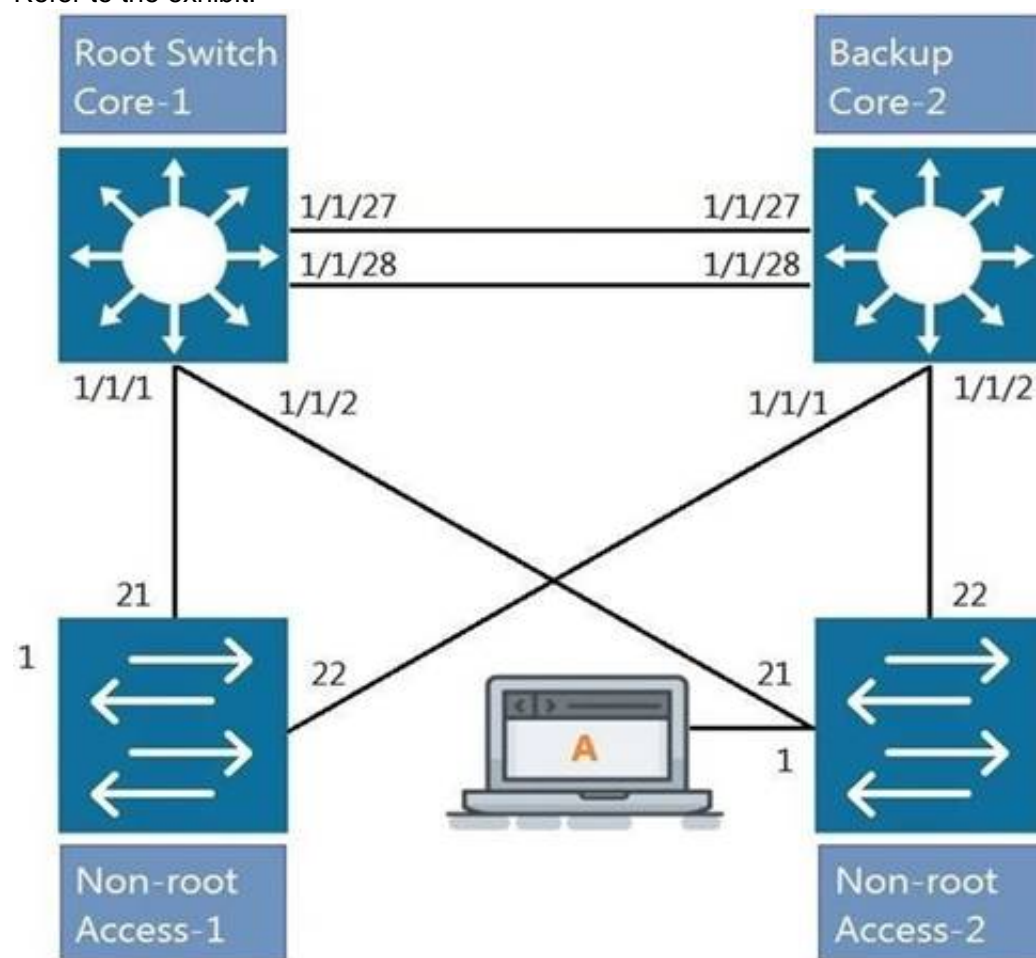
Which two statements accurately describe the features of NetEdit? (Choose two.)

- A. NetEdit can be used to configure and validate any third-party device that supports SSH and REST access.
- B. NetEdit includes trial licensing for up to 10 nodes.
- C. NetEdit can perform configuration and compliance validation.
- D. NetEdit supports viewing and editing multiple devices using a single deployment plan.
- E. NetEdit can run on a mobile device using Android or Apple IOS.

**Answer:** CD

#### NEW QUESTION 52

Refer to the exhibit.



All four switches in the diagram have been configured with the region name "Aruba1".  
 What two other MSTP configurations must match for switches within the same MST region? (Choose two.)

- A. MST region type
- B. MST Bridge ID
- C. MST version number
- D. MST revision number
- E. MST VLAN to instance mapping

**Answer:** DE

#### NEW QUESTION 56

DRAG DROP

Match the terms to the correct layer of the OSI model.

Select and Place:

Layer		Term
Transport Layer		Frames
Network Layer		Packets
Physical Layer		RF Signals
Data Link Layer		Segments

- A. Mastered
- B. Not Mastered

Answer: A

Explanation:

Layer		Term
Transport Layer	Data Link Layer	Frames
Network Layer	Network Layer	Packets
Physical Layer	Physical Layer	RF Signals
Data Link Layer	Transport Layer	Segments

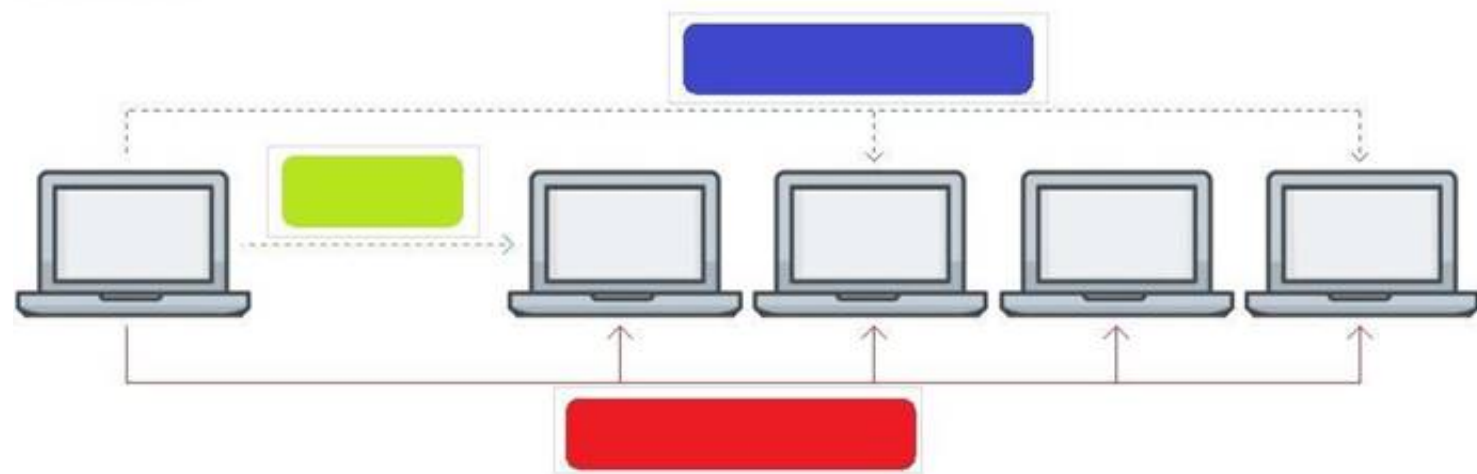
NEW QUESTION 60

HOTSPOT

Click on the colored box that corresponds with the line that best represents Broadcast traffic flow.

Hot Area:

Answer Area

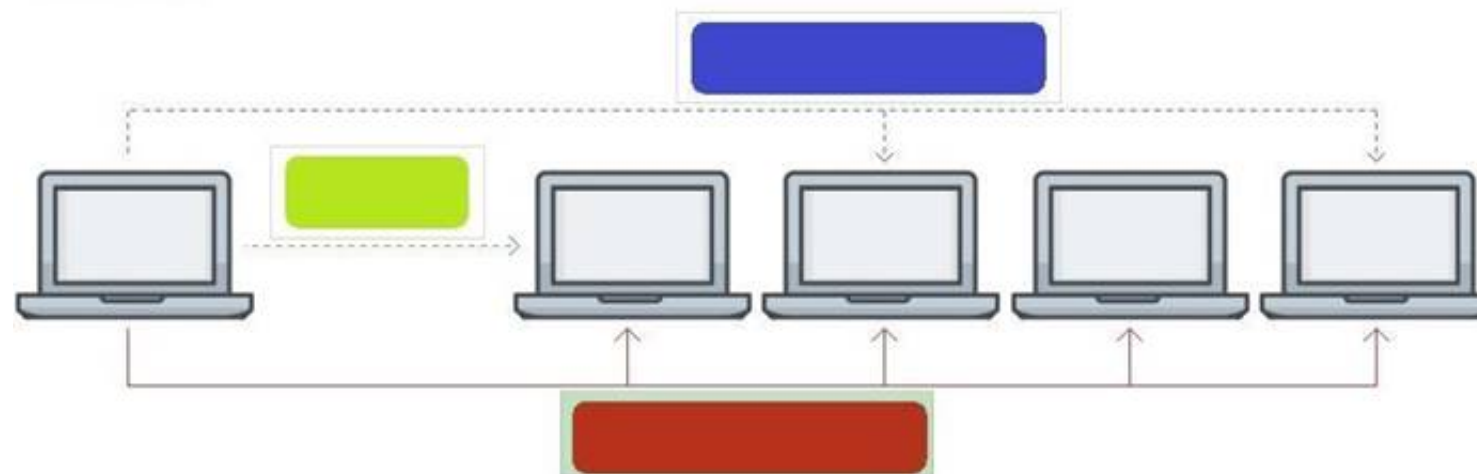


- A. Mastered
- B. Not Mastered

Answer: A

Explanation:

Answer Area



NEW QUESTION 63

Refer to the exhibit.

SW1# show vlan

VLAN	Name	Status	Reason	Type	Interfaces
1	DEFAULT_VLAN_1	up	ok	default	<output omitted>
10	Engineering	up	ok	static	1/1/1-1/1/7
20	Guest	up	ok	static	1/1/11-1/1/14

The above command was applied to an Aruba AOS-CX 6300M 24-port switch with 4-port SFP56 uplinks. All ports are set as access switchports. Which ports carry VLAN 1 traffic?

- A. 1/1/8, 1/1/10, 1/1/5-1/1/24
- B. 1/1/1-1/1/28
- C. 1/1/1-1/1/24
- D. 1/1/8-1/1/10, 1/1/5-1/1/28

Answer: D

NEW QUESTION 65

.....

## Relate Links

**100% Pass Your HPE6-A72 Exam with ExamBible Prep Materials**

<https://www.exambible.com/HPE6-A72-exam/>

## Contact us

We are proud of our high-quality customer service, which serves you around the clock 24/7.

Viste - <https://www.exambible.com/>