

Microsoft

Exam Questions mb-300

Microsoft Dynamics 365 Unified Operations Core



NEW QUESTION 1

- (Exam Topic 1)

You need to detail a business process for streaming the customer editing process for account representatives. Which two actions should you perform? Each correct answer presents a partial solution.

NOTE: Each correct selection is worth one point.

- A. Navigate to the All Customer form for the Accounts receivable module and select the appropriate customer account.
- B. Navigate to the account representative's workspace and select the appropriate customer account.
- C. Select the form and then select Hide.
- D. Hide Invoice account from the view.

Answer: AD

NEW QUESTION 2

- (Exam Topic 2)

You plan the migration from Dynamics AX 2012 R3 to a Dynamics 365 for Finance and Operations environment. You will be using Lifecycle Services (LCS) and the tools provided with it.

You need to clean up data, review and configure SQL optimizations, and identify deprecated features in your code. What tool should you use?

- A. Microsoft Azure DevOps
- B. Upgrade analyzer
- C. Data Import/Export Framework (DIXF)
- D. Code upgrade estimation tools

Answer: B

NEW QUESTION 3

- (Exam Topic 2)

Note: This question is part of a series of questions that present the same scenario. Each question in the series contains a unique solution that might meet the stated goals. Some question sets might have more than one correct solution, while others might not have a correct solution.

After you answer a question in this section, you will NOT be able to return to it. As a result, these questions will not appear in the review screen.

You are a Dynamics 365 for Finance and Operations security administrator.

When testing security setups, users report that certain roles are gaining access to sensitive information via a form in the system.

You must investigate which user roles have what visibility and access level to system objects, and then send a report to the implementation team to address security compliance concerns.

You need to report the information from the system. Solution: Generate the Security role access report. Does the solution meet the goal?

- A. Yes
- B. No

Answer: A

NEW QUESTION 4

- (Exam Topic 2)

You are a Dynamics 365 for Finance and Operations system administrator. You have production and testing environments. You move the workflow from the testing environment to the production environment.

The workflow in the production environment is stuck in a wait state.

You need to resolve the issue with the workflow in the production environment. What should you do?

- A. Set the workflow batch job to critical
- B. Set the workflow messaging batch job group
- C. Grant the user workflow permissions
- D. Set the workflow execution account in the workflow parameters

Answer: D

NEW QUESTION 5

- (Exam Topic 2)

A company plans to use Dynamics 365 for Finance and Operations. You need to implement the security architecture.

Which component should you use for each requirement? To answer, select the appropriate security component in the answer area.

NOTE: Each correct selection is worth one point.

Answer Area

Requirement	Security component
Group the security configuration for employees with the same job function.	<div>Security roles</div> <div>Duties</div> <div>Privileges</div> <div>Permissions</div>
Assign check-depositing tasks to a group of people as part of the accounts receivable process.	<div>Security roles</div> <div>Duties</div> <div>Privileges</div> <div>Permissions</div>
Restrict access to a specific table or chart.	<div>Security roles</div> <div>Duties</div> <div>Privileges</div> <div>Permissions</div>

- A. Mastered
- B. Not Mastered

Answer: A

Explanation:
Answer Area

Requirement	Security component
Group the security configuration for employees with the same job function.	<div>Security roles</div> <div>Duties</div> <div>Privileges</div> <div>Permissions</div>
Assign check-depositing tasks to a group of people as part of the accounts receivable process.	<div>Security roles</div> <div>Duties</div> <div>Privileges</div> <div>Permissions</div>
Restrict access to a specific table or chart.	<div>Security roles</div> <div>Duties</div> <div>Privileges</div> <div>Permissions</div>

NEW QUESTION 6

- (Exam Topic 2)

You plan the migration from a Dynamics AX 2012 to a Dynamics 365 for Finance and Operations environment.

You are tasked with overseeing and planning a cutover to guarantee a smooth experience for end users during the cutover. You perform a basic data upgrade validation.

You need to perform a cutover.

Which three tasks must you perform? Each correct answer presents part of the solution. NOTE: Each correct selection is worth one point.

- A. Perform a smoke test.
- B. Copy the upgraded database from the sandbox environment into the production environment.
- C. Complete application setup tasks.
- D. Ensure that Synchronous transfer mode is enabled
- E. Enable the Microsoft Power BI AppSource content packs for Cost management, Financial performance, and Retail channel performance.

Answer: BCE

NEW QUESTION 7

- (Exam Topic 2)

Note: This question is part of a series of questions that present the same scenario. Each question in the series contains a unique solution that might meet the stated goals. Some question sets might have more than one correct solution, while others might not have a correct solution.

After you answer a question in this section, you will NOT be able to return to it. As a result, these questions will not appear in the review screen.

You are a functional consultant who is deploying Dynamics 365 for Finance and Operations. The implementation must:

- ☒ Use an iterative approach
- ☒ Integrate with real-world data
- ☒ Enforce standards and governance
- ☒ Implement multiple rounds of feedback

You need to deploy and validate the implementation.

Solution: Deploy the out-of-the-box solution. Enable users to customize the solution based on individual user scenarios.

Does the solution meet the goal?

- A. Yes
- B. No

Answer: B

NEW QUESTION 8

- (Exam Topic 2)

You are a Dynamics 365 for Finance and Operations system administrator.

The expense department relies heavily on properly operating workflows. If there is a failure in the workflow, the issue needs to get resolved quickly.

You need to make sure that the system actively tracks the status, so the support team can monitor and take actions against any failures.

What should you do? Each correct answer presents a complete solution.

NOTE: Each correct selection is worth one point.

- A. Set the monitoring category of the Workflow message processing batch job to Workflow.
- B. Set the critical job flag of the Workflow message processing batch job to True.
- C. Set the Ignore task failure flag of the Workflow message processing batch job to False.
- D. Set the batch job named Workflow message processing to send an email when the status of the batch job is Error.
- E. Set the priority field of the Workflow message processing batch job to 1.

Answer: BCD

NEW QUESTION 9

- (Exam Topic 2)

During the implementation planning process, a company decides to migrate various functional data from its legacy systems. These include accounting data, sales data, and purchasing data.

Some functional data elements reference data stored in other tables.

You need to ensure that data types and data elements are imported in the correct order.

In what order should you perform the data migration? To answer, select the appropriate configuration in the answer area.

NOTE: Each correct selection is worth one point.

Answer Area

Sequential order	Order options
Data category	Master, reference, transaction Reference, master, transaction Transaction, reference, master Transaction, master, reference
Data entity	Ledger journals, chart of accounts, account structures Chart of accounts, account structures, ledger journals Account structures, chart of accounts, ledger journals Ledger journals, account structures, chart of accounts

- A. Mastered
- B. Not Mastered

Answer: A

Explanation:

Answer Area

Sequential order	Order options
Data category	Master, reference, transaction Reference, master, transaction Transaction, reference, master Transaction, master, reference
Data entity	Ledger journals, chart of accounts, account structures Chart of accounts, account structures, ledger journals Account structures, chart of accounts, ledger journals Ledger journals, account structures, chart of accounts

NEW QUESTION 10

- (Exam Topic 2)

A multinational company plans to implement centralized procurement using purchase requisition workflows. Multiple workflows must be of the same type. Each region must use its own purchase requisition workflow. You need to implement the workflows. What should you do?

- A. Configure Instructions for users
- B. Configure the workflow owner
- C. Configure automated tasks
- D. Configure manual tasks
- E. Add a condition for running the workflow

Answer: E

NEW QUESTION 10

- (Exam Topic 2)

You receive an error when importing data into the pilot instance. You need to troubleshoot the error. What should you do first?

Answer Area

You receive an error when importing data into the pilot instance. You need to troubleshoot the error. What should you do first?

Set the entity order to Customer parameters, Customer groups, Customers V3, Customer invoicing journal.
Set Default refresh type to Full push only.
Set Skip staging to Yes.
Set Generate data package to No.

Only a subset of customers is imported into the pilot instance. You make a correction to ensure that all customer data is imported. What should you do next?

Set the entity order to Customer parameters, Customer groups, Customers V3, Customer invoicing journal.
Set Default refresh type to Full push only.
Set Skip staging to Yes.
Set Generate data package to No.

- A. Mastered
- B. Not Mastered

Answer: A

Explanation:

Answer Area

You receive an error when importing data into the pilot instance. You need to troubleshoot the error. What should you do first?

Set the entity order to Customer parameters, Customer groups, Customers V3, Customer invoicing journal.
Set Default refresh type to Full push only.
Set Skip staging to Yes. ¹
Set Generate data package to No.

Only a subset of customers is imported into the pilot instance. You make a correction to ensure that all customer data is imported. What should you do next?

Set the entity order to Customer parameters, Customer groups, Customers V3, Customer invoicing journal.
Set Default refresh type to Full push only.
Set Skip staging to Yes.
Set Generate data package to No.

NEW QUESTION 14

- (Exam Topic 2)

You are a system administrator using Dynamics 365 for Finance and Operations. You are responsible for troubleshooting workflows.

You need to determine where workflows are failing based on error messages.

Which runtime is raising the error when the following activity and error occurs? To answer, select the appropriate runtime in the answer area.

NOTE: Each correct selection is worth one point.

Answer Area

Activity and error	Runtime
A user submits an expense report by clicking the Submit button on one of the workflow controls. An error occurs.	<div>Managed workflow runtime</div> <div>X++ workflow runtime</div>
.NET Interop from X++ receives the message and starts a new workflow instance via Windows Workflow Foundation. An error occurs.	<div>X++ workflow runtime</div> <div>Managed workflow runtime</div>
The messaging batch job reads the Workflow started message from the message queue and invokes the application event handler to process a workflow started event. An error occurs.	<div>Managed workflow runtime</div> <div>X++ workflow runtime</div>

- A. Mastered
- B. Not Mastered

Answer: A

Explanation:

References:

<https://docs.microsoft.com/en-us/dynamics365/unified-operations/fin-and-ops/organization-administration/work>

NEW QUESTION 15

- (Exam Topic 2)

You are configuring the address books for a company's accounts receivable, accounts payable, and retail operations.

You need to configure the appropriate address books to meet various requirements.

Which address book should you use for each scenario? To answer, drag the appropriate address book objects to the correct scenarios. Each address book object may be used once, more than once, or not at all. You may need to drag the spit bar between panes or scroll to view content.

NOTE: Each correct selection is worth one point.

Address Book Object	Answer Area	Address Book Object
	Scenario	
<div>employee</div>	Restrict account visibility for a given retail channel transaction.	<div>Address Book Object</div>
<div>global</div>	Create an address for a vendor.	<div>Address Book Object</div>
<div>customer</div>	Link workers to retail locations.	<div>Address Book Object</div>
<div>contact</div>	Create an address for a prospect.	<div>Address Book Object</div>

- A. Mastered
- B. Not Mastered

Answer: A

Explanation:

Address Book Object	Scenario	Address Book Object
employee	Restrict account visibility for a given retail channel transaction. Create an address for a vendor. Link workers to retail locations. Create an address for a prospect.	customer
global		global
customer		employee
contact		contact

NEW QUESTION 18

- (Exam Topic 2)

A company implements Dynamics 365 for Finance and Operations.

You are responsible for creating a custom feature within a solution by using Microsoft Azure DevOps. Testers have found a bug while running one of the User Acceptance Testing (UAT) scripts. However, it is not a high-severity bug and has been found to not have interconnected dependencies to other branches within the process flow.

You need to deploy the passed functionality features. What should you do?

- A. Exclude the specific package from the Business process modeler (BPM).
- B. Exclude the specific package from the data package in the Data management tool.
- C. Exclude the specific package from the deployable package in Microsoft Azure DevOps.
- D. Exclude the specific package from the deployable package in Configuration data manager.

Answer: C

NEW QUESTION 22

- (Exam Topic 2)

Note: This question is part of a series of questions that present the same scenario. Each question in the series contains a unique solution that might meet the stated goals. Some question sets might have more than one correct solution, while others might not have a correct solution.

After you answer a question in this section, you will NOT be able to return to it. As a result, these questions will not appear in the review screen.

You are configuring a Dynamics 365 for Finance and Operations environment. You must set up Microsoft Excel data exports.

You need to verify that the solution will result in a successful export of data to Excel.

Solution: Use Workbook Designer to build an editable custom export of customer data that includes only postal code, city, and state.

Does the solution meet the goal?

- A. Yes
- B. No

Answer: A

NEW QUESTION 25

- (Exam Topic 2)

You manage a Dynamics 365 for Finance and Operations environment. Users report slow queries, deadlocks, and crashes. You need identify which tool to use to troubleshoot. What should you use?

- A. System diagnostics
- B. Environment monitoring
- C. DirectQuery
- D. Microsoft Azure Active Directory Connect Health Agent

Answer: B

Explanation:

Reference:

<https://blogs.msdn.microsoft.com/axsa/2018/06/05/how-to-use-environment-monitoring-view-raw-logs/>

NEW QUESTION 30

- (Exam Topic 2)

You are tasked with setting up Case management in the Dynamics 365 for Finance and Operations deployment for your organization.

Your organization must use cases to track defect and enhancement reports for products, so that engineers can improve products over time. Only appropriate employees within the organization should have access to cases and related information.

- * Call center employees create thousands of service cases and ensure that the proper resources are allocated for each service.
- * Service department employees fix cases created by the call center and create cases for defects and enhancement suggestions when they identify them.
- * Engineers review the cases from the service department while planning and designing the next version. You need to configure the tool to enable tracking of

service cases and product defects and enhancements.
Which Case management settings should you choose for each category or categories? To answer, select the appropriate options in the answer area.
NOTE: Each correct selection is worth one point.

Option	Value
Category to use.	<div>General and Production</div> <div>Service and Product change</div>
Service department in which employees create cases.	<div>General</div> <div>Production</div> <div>Service</div> <div>Product change</div>
Call center in which employees create cases.	<div>General</div> <div>Production</div> <div>Service</div> <div>Product change</div>

- A. Mastered
- B. Not Mastered

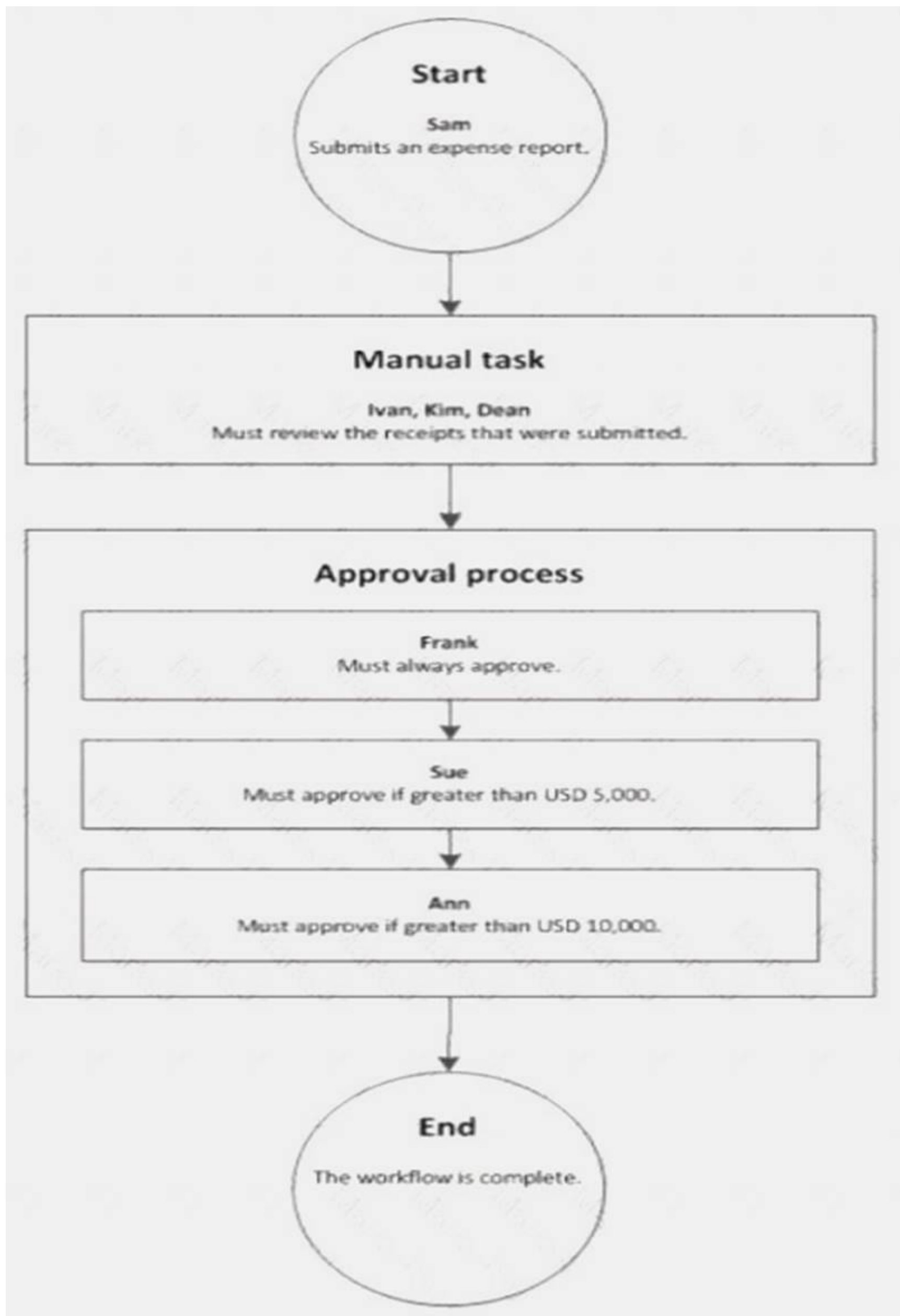
Answer: A

Explanation:

Option	Value
Category to use.	<div>General and Production</div> <div>Service and Product change</div>
Service department in which employees create cases.	<div>General</div> <div>Production</div> <div>Service</div> <div>Product change</div>
Call center in which employees create cases.	<div>General</div> <div>Production</div> <div>Service</div> <div>Product change</div>

NEW QUESTION 34

- (Exam Topic 2)
A company sets up a workflow for expense reports. An employee named Sam submits an expense report totaling USD 7,000 to go through the workflow.



Use the drop-down menus to select the answer choice that answers each question based on the information presented in the graphic.

NOTE: Each correct selection is worth one point.

Questions	Answer choice
What statement about the workflow is correct?	Ann can reject the expense report. Ivan, Kim, and Dean must all complete the manual task. The workflow ends after Sue approves the expense report. The expense report will go through Frank, Sue, and Ann for approval.
What type of workflow is this?	Workflow with roles Workflow with a manual decision Workflow with multiple users in a task Workflow with a line-item workflow element

- A. Mastered
- B. Not Mastered

Answer: A

Explanation:

Reference:
<https://docs.microsoft.com/en-us/dynamicsax-2012/appuser-itpro/workflow-with-multiple-users-in-a-task>

NEW QUESTION 37

- (Exam Topic 2)
Note: This question is part of a series of questions that present the same scenario. Each question in the series contains a unique solution that might meet the stated goals. Some question sets might have more than one correct solution, while others might not have a correct solution.
After you answer a question in this section, you will NOT be able to return to it. As a result, these questions will not appear in the review screen.
You are a Dynamics 365 for Finance and Operations system administrator. You have a test environment that is used by several people at any given time. You create a new data entity in your development and migrate the code to the test environment. In the test environment, you are unable to find the data entity in the list.
You need to locate the data entity.
Solution: Enable the Public API check box in the data entity. Does the solution meet the goal?

- A. Yes
- B. No

Answer: B

NEW QUESTION 39

- (Exam Topic 2)
You set up Dynamics 365 for Finance and Operations. Your organization will use email with the application. You need to ensure that email will be sent using typical secure settings. What setting must be set up as specified?

- A. Specify if SSL is required is selected.
- B. Information rights management is enabled.
- C. In-place hold and Litigation hold are enabled.
- D. In-place eDiscovery is enabled.

Answer: A

NEW QUESTION 40

- (Exam Topic 2)
You are a Dynamics 365 for Finance and Operations system administrator.
The finance department is experiencing electronic reporting submittal issues. You must use all available sources to troubleshoot those issues.
You need to identify potential hotfixes.
Which four actions should you perform in sequence? To answer, move the appropriate actions from the list of actions to the answer area and arrange them in the correct order.

Actions

Log in to Lifecycle Services (LCS).

Use the Issue search tile.

Select a project to work in.

Enter the issue case number.

Enter search terms.

Create a new case.

Answer area

>

<

↑

↓

- A. Mastered
- B. Not Mastered

Answer: A

Explanation:

Reference:

<https://docs.microsoft.com/en-us/dynamics365/unified-operations/dev-itpro/lifecycle-services/issue-search-lcs>

NEW QUESTION 44

- (Exam Topic 2)

Note: This question is part of a series of questions that present the same scenario. Each question in the series contains a unique solution that might meet the stated goals. Some question sets might have more than one correct solution, while others might not have a correct solution.

After you answer a question in this section, you will NOT be able to return to it. As a result, these questions will not appear in the review screen.

You are a Dynamics 365 for Finance and Operations security administrator.

When testing security setups, users report that certain roles are gaining access to sensitive information via a form in the system.

You must investigate which user roles have what visibility and access level to system objects, and then send a report to the implementation team to address security compliance concerns.

You need to report the information from the system. Solution: Generate the Security duty assignments report. Does the solution meet the goal?

- A. Yes
- B. No

Answer: B

NEW QUESTION 49

- (Exam Topic 2)

Your company acquires hundreds of partnerships after it purchases a separate company. The separate company stores the partnership records in a legacy system.

You export Partnership and PartnershipGroup files from the legacy system into Microsoft Word format. You create Partnership and PartnershipGroup entities.

You need to import the partnerships into Dynamics 365 for Finance and Operations.

Which four actions should you perform in order? To answer, move four actions from the list of actions to the answer area and arrange them in the correct order.

Actions

Perform the data import.

Convert the Word files to OData format. In the Dynamics 365 client Data management workspace, create a new data project.

In SQL Server Management Studio, use the SQL Server Integration Services import wizard.

In the Visual Studio Finance and Operations project, use the Data entity wizard.

Convert the Word files to CSV format. In the Dynamics 365 client Data management workspace, create a new data project.

For each file, select the entities and upload the files.

Validate all entity data mapping.

Answer Area

>

<

↑

↓

- A. Mastered
- B. Not Mastered

Answer: A

Explanation:

Actions	Answer Area
Perform the data import.	Convert the Word files to CSV format. In the Dynamics 365 client Data management workspace, create a new data project.
Convert the Word files to OData format. In the Dynamics 365 client Data management workspace, create a new data project.	Perform the data import.
In SQL Server Management Studio, use the SQL Server Integration Services import wizard.	In SQL Server Management Studio, use the SQL Server Integration Services import wizard.
In the Visual Studio Finance and Operations project, use the Data entity wizard.	Validate all entity data mapping.
Convert the Word files to CSV format. In the Dynamics 365 client Data management workspace, create a new data project.	
For each file, select the entities and upload the files.	
Validate all entity data mapping.	

NEW QUESTION 54

- (Exam Topic 2)

You plan a data migration from Dynamics AX 2009 to a Dynamics 365 for Finance and Operations environment. You need to ensure that you can perform the data migration. What should you do first?

- A. Upgrade the existing on-premises environment to Dynamics 365 for Finance and Operations online
- B. Migrate content to Dynamics POS (Point-of-Sale) 2009
- C. Upgrade the existing on-premises environment to Dynamics AX 2012 R2
- D. Migrate content to Dynamics 365 Business Central

Answer: C

NEW QUESTION 57

- (Exam Topic 2)

You implement Dynamics 365 for Finance and Operations. The implementation will undergo User Acceptance Testing (UAT). You create test case recordings. To coordinate testing across multiple environments, UAT must be integrated with Microsoft Azure DevOps. You need to configure Business process modeler (BPM) and Azure DevOps to complete user acceptance testing. Which three actions should you perform? Each correct answer presents a complete solution. NOTE: Each correct selection is worth one point.

- A. Synchronize the BPM library with Azure DevOps
- B. Create a test pass and test case in Azure DevOps
- C. Upload saved Task recorder files to BPM
- D. Create a test plan and test suites in Azure DevOps
- E. Synchronize the BPM library with a Git repo
- F. Upload saved Task recorder files to Azure DevOps

Answer: ACD

Explanation:

References:

<https://docs.microsoft.com/en-us/dynamics365/unified-operations/dev-itpro/lifecycle-services/using-taskguides-and-bpm-to-create-user-acceptance-tests>

NEW QUESTION 59

- (Exam Topic 2)

You assign security roles to users in your company. The security roles contain one or more duty assignments. The purchasing manager role must be able to view payment journals. You need to edit the security configuration to meet the requirement. What should you do?

- A. Create a new security rol
- B. Create a purchasing manager duty and assign it to that rol
- C. Then assign the duty to the user.
- D. Create a new privileg
- E. Assign the View only permission to the privileg
- F. Then assign the privilege to the user.
- G. Edit the existing role and assign the View payment journal transactions permission level.

- H. Edit the duty to view only on the payment journal.
- I. The duty is assigned to the purchasing manager role.

Answer: C

NEW QUESTION 60

- (Exam Topic 2)

You are a Dynamics 365 for Finance and Operations system administrator.

You have 50 identified purchase order numbers that are not used in the system and are not being recycled. Why they are missing is unknown. Purchasing operations is currently operating around the clock and no downtime can occur.

You need to use the missing numbers in the system. What should you do?

- A. Run the Number sequence wizard for the purchase order number sequence.
- B. Change the number sequence to manual, then manually assign the number sequences to the new purchase orders.
- C. Change the number sequence to continuous and create the new purchase orders.
- D. Run Automatic cleanup of number sequence and create the new purchase orders.
- E. Change the number sequence to non-continuous and create the new purchase orders.

Answer: D

NEW QUESTION 63

- (Exam Topic 2)

You set up Dynamics 365 for Finance and Operations. Your organization will use email with the application.

You need to ensure that email will be sent using typical secure settings. What setting must be set as specified?

- A. In-place hold and Litigation hold are enabled.
- B. In-place eDiscovery is enabled.
- C. The SMTP port field is set to 587.
- D. Retention policies are enabled.

Answer: C

NEW QUESTION 68

- (Exam Topic 2)

A company plans to implement the case management feature of Dynamics 365 for Finance and Operations. You need to describe the scenarios in which you should use the case management tool. Which three scenarios should be used? Each correct answer presents a complete solution. NOTE: Each correct selection is worth one point.

- A. Since case activities can be assigned to different people, a case can use workflow.
- B. Although the sales module already has return-order functionality, case management is still used for customer returns and claims.
- C. Knowledge articles used by case management are associated with specific functional modules.
- D. A human resources generalist can use the case management tool to track employee interactions, even though the department stores confidential information about employees.
- E. A case can be used to track both external and internal issues.

Answer: CDE

Explanation:

References:

<https://docs.microsoft.com/en-us/dynamics365/unified-operations/fin-and-ops/organization-administration/cases>

NEW QUESTION 72

- (Exam Topic 2)

Note: This question is part of a series of questions that present the same scenario. Each question in the series contains a unique solution that might meet the stated goals. Some question sets might have more than one correct solution, while others might not have a correct solution.

After you answer a question in this section, you will NOT be able to return to it. As a result, these questions will not appear in the review screen.

You are developing a file-based integration to Dynamics 365 for Finance and Operations.

Microsoft Excel files with 15,000 or more records need to be imported into the system periodically by individual users. The records need to be imported in full within a 5-minute approved window.

You need to determine how to accomplish the import into the system.

Solution: Import the data by using the Data Management Framework's package API. Does the solution meet the goal?

- A. Yes
- B. No

Answer: B

NEW QUESTION 75

- (Exam Topic 2)

Note: This question is part of a series of questions that present the same scenario. Each question in the series contains a unique solution that might meet the stated goals. Some question sets might have more than one correct solution, while others might not have a correct solution.

After you answer a question in this section, you will NOT be able to return to it. As a result, these questions will not appear in the review screen.

You are configuring a Dynamics 365 for Finance and Operations environment. You must set up Microsoft Excel data exports.

You need to verify that the solution will result in a successful export of data to Excel. Solution: Use OAuth authentication.

Does the solution meet the goal?

- A. Yes
- B. No

Answer: B

NEW QUESTION 76

- (Exam Topic 2)

You are a systems administrator at a company that has implemented Dynamics 365 for Finance and Operations.

New employees are starting at the company.

You need to extend the electronic signatures functionality to them.

Which two actions should you perform? Each answer presents part of the solution.

NOTE: Each correct selection is worth one point.

- A. On the Email parameters page, specify that SSL is required
- B. Specify the user's email address
- C. In License configuration, enable Maintenance mode
- D. Select the Electronic signature check box

Answer: CD

Explanation:

Reference:

<https://docs.microsoft.com/en-us/dynamics365/unified-operations/fin-and-ops/organization-administration/tasks>

NEW QUESTION 78

- (Exam Topic 2)

A company needs to set up its printers to work with Dynamics 365 for Finance and Operations. You need to set up the printers for network printing from the

Dynamics 365 client browser.

Which three actions should be performed in order? To answer, move all actions from the list of actions to the answer area and arrange them in the correct order.

Actions

Activate the network printers

Install and configure a document routing agent

Set up the network printer and assign a static IP

Register network printers in Finance and Operations

Answer Area

- A. Mastered
- B. Not Mastered

Answer: A

Explanation:

References:

<https://docs.microsoft.com/en-us/dynamics365/unified-operations/dev-itpro/analytics/install-document-routing-a>

NEW QUESTION 80

- (Exam Topic 2)

You are a Dynamics 365 for Finance and Operations system administrator. A user reports that the system is getting gradually slower.

You need to identify the user's processes and slow-running queries and rebuild any fragmented indexes. Which features should you use? To answer, select the appropriate configuration in the answer area. NOTE: Each correct selection is worth one point.

Answer Area

Activity

Environment monitoring tool

Instruct the user to validate the processes using a given session ID.

User interaction
User load
Activity load
User activity

View the call stack for any slow-running queries.

User interaction
Raw logs
Activity load
User load

Rebuild a fragmented index.

SQL Insights
Environment activity
Environment health
User load

- A. Mastered
- B. Not Mastered

Answer: A

Explanation:

Answer Area

Activity

Environment monitoring tool

Instruct the user to validate the processes using a given session ID.

User interaction
User load
Activity load
User activity

View the call stack for any slow-running queries.

User interaction
Raw logs
Activity load
User load

Rebuild a fragmented index.

SQL Insights
Environment activity
Environment health
User load

NEW QUESTION 82

- (Exam Topic 2)

A company implements Dynamics 365 for Finance and Operations.

You are the primary approver for purchase requisitions that are greater than \$500,000. You are going on vacation for two weeks.

You need to assign another user as the approver only for purchase requisitions greater than \$500,000. What should you do?

- A. Under User Options, add a user and assign the scope of Module
- B. Under User Options, add a user and assign the scope of All
- C. Under User Options, add a user and assign the scope of Workflow

Answer: C

NEW QUESTION 84

- (Exam Topic 2)

You manage a Dynamics 365 for Finance and Operations environment.

In preparation for being migrated into a new environment, data packages are being numbered in alignment with the default numbering formats in Lifecycle Services. A package is named 03.01.002.

You need to identify what this package contains. To answer, select the appropriate option in the answer area. NOTE: Each correct selection is worth one point.

Segment	Component
03	The environment The module The data type The month
01	The module The month The sequence number The data type
002	The sequence number The data package version The data entity The data type reference

- A. Mastered
B. Not Mastered

Answer: A

Explanation:

Segment	Component
03	The environment The module The data type The month
01	The module The month The sequence number The data type
002	The sequence number The data package version The data entity The data type reference

NEW QUESTION 88

- (Exam Topic 2)

A system administrator has limited security rights in a Dynamics 365 for Finance and Operations environment that has multiple legal entities. You have a service-level agreement (SLA) of 30 minutes for support requests.

The organizational administrator set up the printers for the organization.

A printer fails. The system administrator deletes the printer instance. Sensitive print jobs remain in the printer queue and must be purged. Existing permissions do not allow the system administrator to purge the print queue because the printer is attached to multiple legal entities.

You need to purge the documents from the print queue.

What should you do?

- A. Wait for the organizational administrator to return to purge the documents._
B. Use the system administration utility to purge the documents.
C. Use an account with administrative permissions on the network printer to purge the queue.
D. Contact Microsoft technical support-

Answer: C

NEW QUESTION 91

- (Exam Topic 2)

You are a Dynamics 365 for Finance and Operations system administrator.

A user is reporting an issue with the Sales Order form. The UI for the form is not loading properly, and there are some performance issues. The object was working fine until the most recent update release. The user has personalized this form, is using Microsoft Internet Explorer 11, and no other users are reporting issues.

You need to resolve the issue. What should you do?

- A. Export, delete, then reimport the usage data for the sales form object.
B. Disable and then re-enable the user.
C. Reset all the usage data for the user.
D. Reimport and compile the AOT object causing issues.

Answer: C

NEW QUESTION 92

- (Exam Topic 2)

You are a Dynamics 365 for Finance and Operations developer.

New features for Dynamics 365 for Finance and Operations have been released. Your company plans to upgrade their Dynamics 365 instance soon.

You need to download a virtual machine that includes all of the new features so that you can explore the new features.

Where should you go?

- A. Microsoft Connect
B. Shared Asset library
C. Environments
D. My subscription
E. Microsoft Developer Network

Answer: C

NEW QUESTION 97

.....

Thank You for Trying Our Product

We offer two products:

1st - We have Practice Tests Software with Actual Exam Questions

2nd - Questions and Answers in PDF Format

mb-300 Practice Exam Features:

- * mb-300 Questions and Answers Updated Frequently
- * mb-300 Practice Questions Verified by Expert Senior Certified Staff
- * mb-300 Most Realistic Questions that Guarantee you a Pass on Your FirstTry
- * mb-300 Practice Test Questions in Multiple Choice Formats and Updatesfor 1 Year

100% Actual & Verified — Instant Download, Please Click
[Order The mb-300 Practice Test Here](#)