

300-410 Dumps

Implementing Cisco Enterprise Advanced Routing and Services (ENARSI)

<https://www.certleader.com/300-410-dumps.html>



NEW QUESTION 1

Refer to the exhibit.

```

config t
flow record v4_r1
match ipv4 tos
match ipv4 protocol
match ipv4 source address
match ipv4 destination address
match transport source-port
match transport destination-port
collect counter bytes long
collect counter packets long
!
flow exporter EXPORTER-1
destination 172.16.10.2
transport udp 90
exit
!
flow monitor FLOW-MONITOR-1
record v4_r1
exit
!
ip cef
!
interface Ethernet0/0.1
ip address 172.16.6.2 255.255.255.0
ip flow monitor FLOW-MONITOR-1 input
!

```

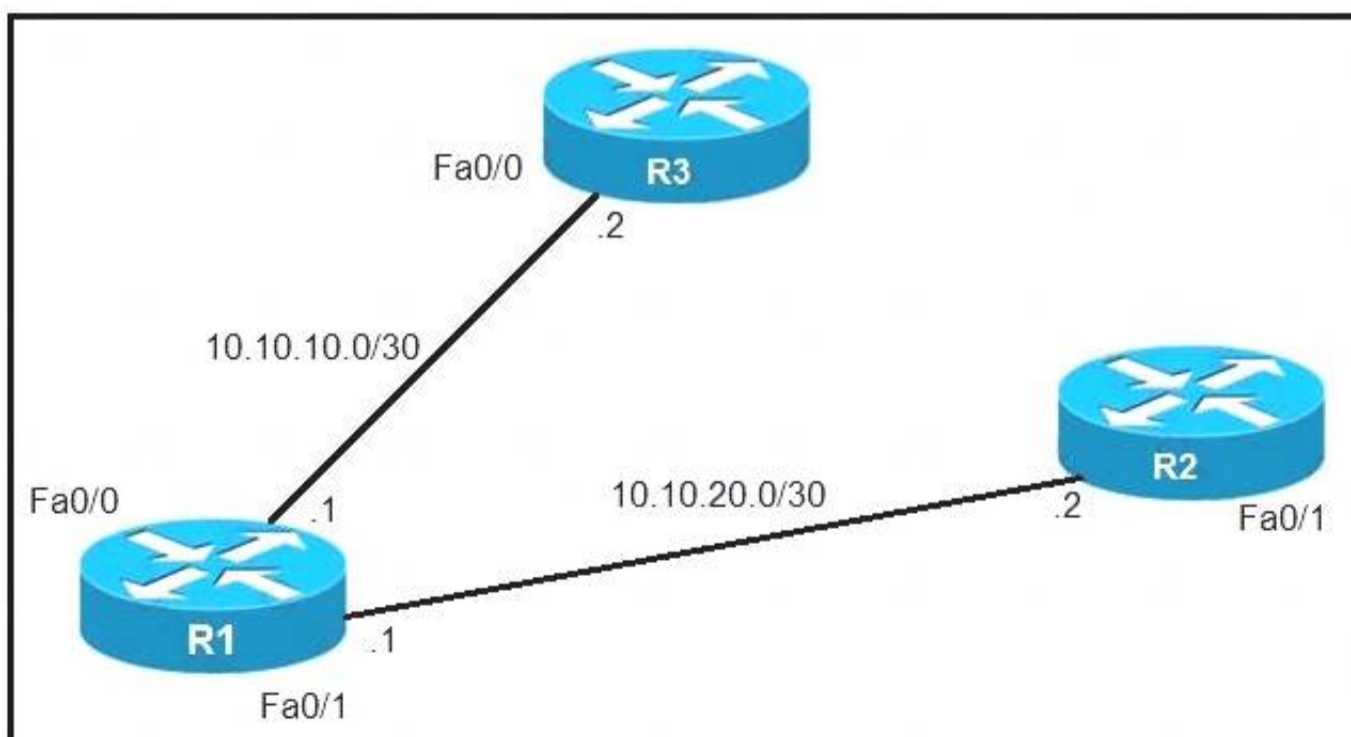
Why is the remote NetFlow server failing to receive the NetFlow data?

- A. The flow exporter is configured but is not used.
- B. The flow monitor is applied in the wrong direction.
- C. The flow monitor is applied to the wrong interface.
- D. The destination of the flow exporter is not reachable.

Answer: D

NEW QUESTION 2

Refer to the exhibit.



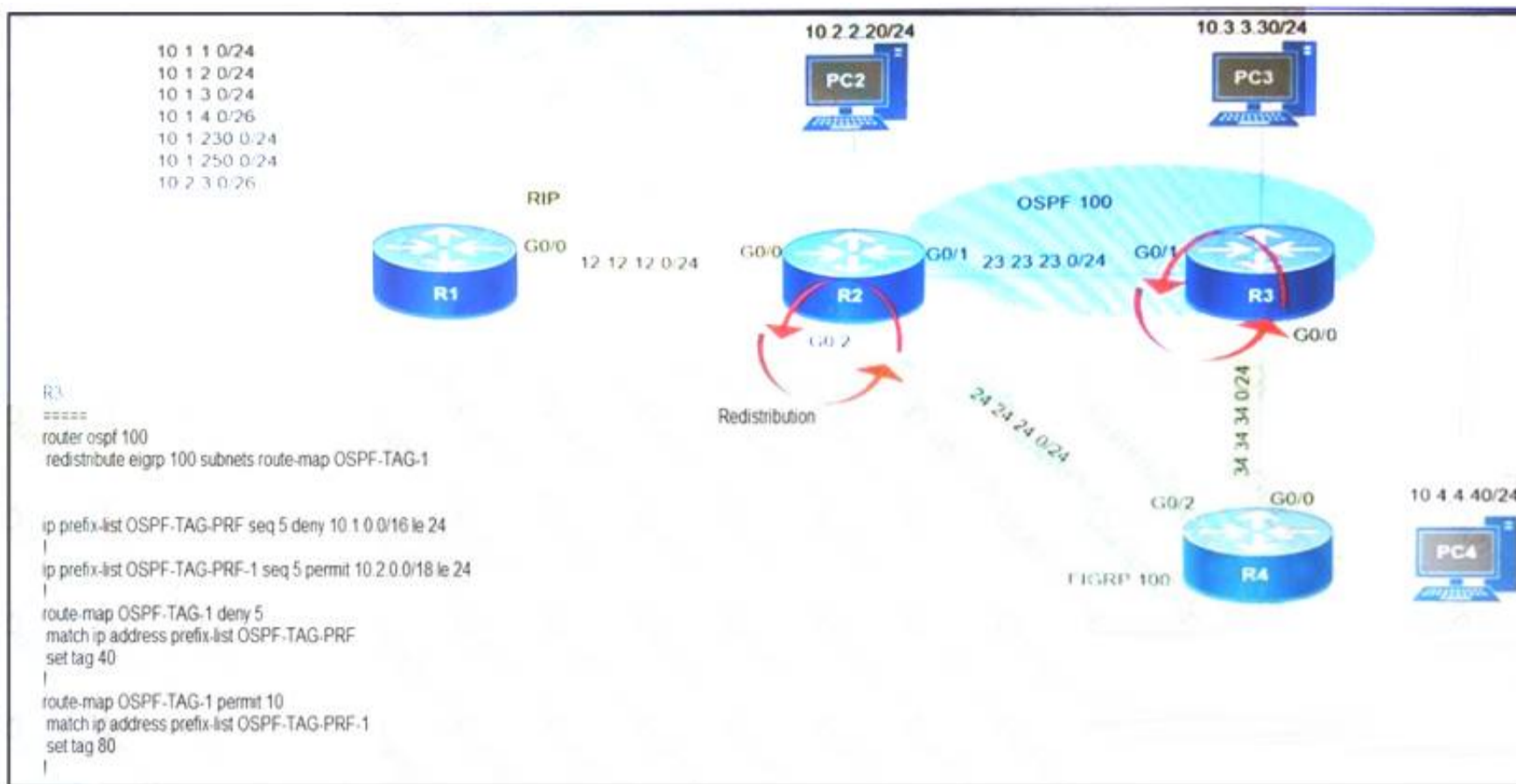
An IP SLA was configured on router R1 that allows the default route to be modified in the event that Fa0/0 loses reachability with the router R3 Fa0/0 interface. The route has changed to flow through router R2. Which debug command is used to troubleshoot this issue?

- A. debug ip flow
- B. debug ip sla error
- C. debug ip routing
- D. debug ip packet

Answer: C

NEW QUESTION 3

Refer to the exhibit.



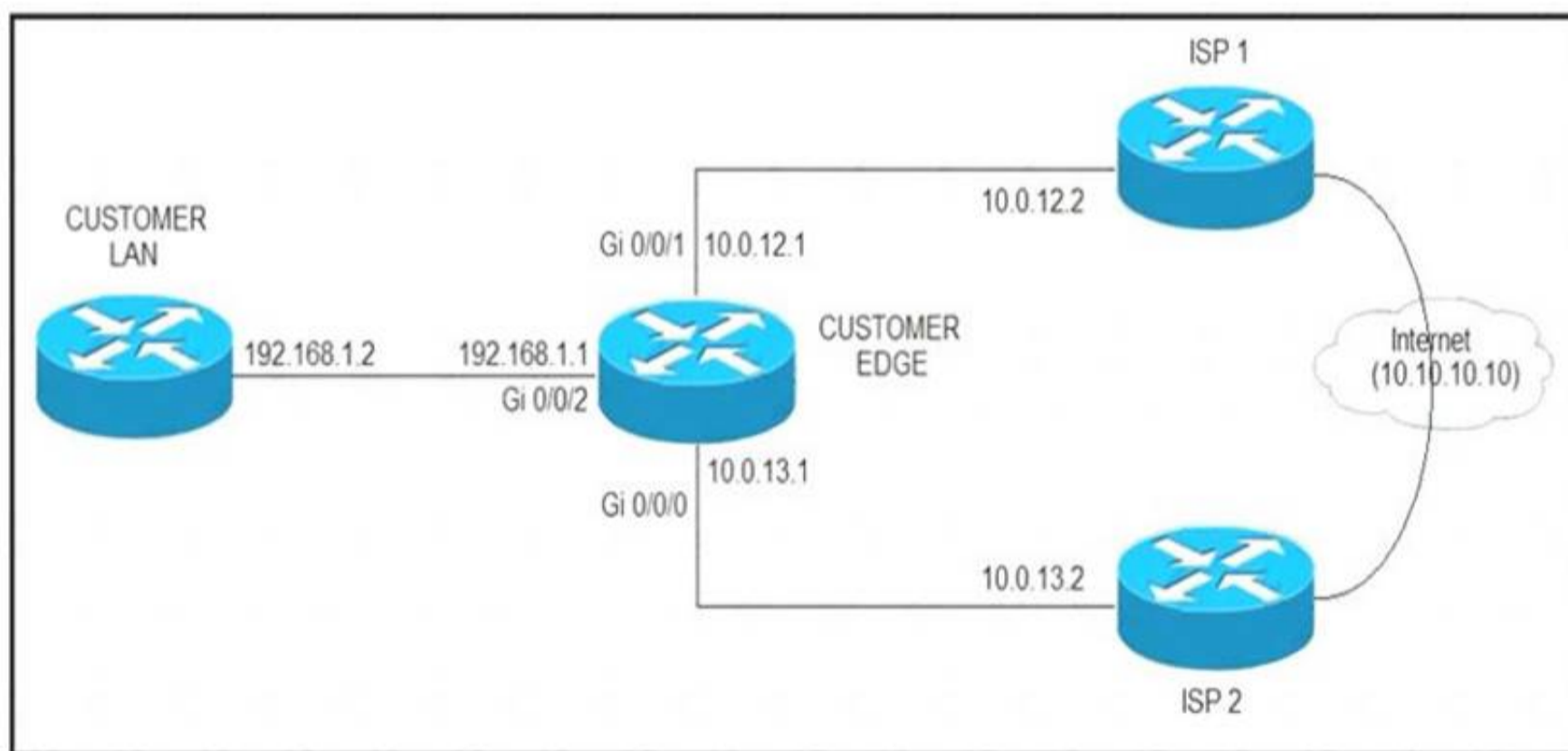
Which subnet is redistributed from EIGRP to OSPF routing protocols?

- A. 10.2.2.0/24
- B. 10.1.4.0/26
- C. 10.1.2.0/24
- D. 10.2.3.0/26

Answer: A

NEW QUESTION 4

Refer to the exhibit.



ISP 1 and ISP 2 directly connect to the Internet. A customer is tracking both ISP links to achieve redundancy and cannot see the Cisco IOS IP SLA tracking output on the router console. Which command is missing from the IP SLA configuration?

- A. Start-time 00:00
- B. Start-time 0
- C. Start-time immediately
- D. Start-time now

Answer: D

NEW QUESTION 5

Which configuration adds an IPv4 interface to an OSPFv3 process in OSPFv3 address family configuration?

- A. router ospfv3 1 address-family ipv4

- B. Router(config-router)#ospfv3 1 ipv4 area 0
- C. Router(config-if)#ospfv3 1 ipv4 area 0
- D. router ospfv3 1 address-family ipv4 unicast

Answer: B

NEW QUESTION 6

Refer to the exhibit.

```
R1#show policy-map control-plane
Control Plane
  Service-policy input: CoPP-BGP
    Class-map: BGP (match all)
      2716 packets, 172071 bytes
      5 minute offered rate 0000 bps, drop rate 0000 bps
      Match: access-group name BGP
      drop

    Class-map: class-default (match-any)
      5212 packets, 655966 bytes
      5 minute offered rate 0000 bps, drop rate 0000 bps
      Match: any
```

What is the result of applying this configuration?

- A. The router can form BGP neighborships with any other device.
- B. The router cannot form BGP neighborships with any other device.
- C. The router cannot form BGP neighborships with any device that is matched by the access list named "BGP".
- D. The router can form BGP neighborships with any device that is matched by the access list named "BGP".

Answer: D

NEW QUESTION 7

Refer to the exhibit.

```
* Jun 28 14:41:57: %BGP-5-ADJCHANGE: neighbor 192.168.2.2 Down User reset
* Jun 28 14:41:57: %BGP_SESSION-5-ADJCHANGE: neighbor 192.168.2.2 IPv4 Unicast
topology base removed from session User reset
* Jun 28 14:41:57: %BGP-5-ADJCHANGE: neighbor 192.168.2.2 Up
R1#show clock
*15:42:00.506 CET Fri Jun 28 2019
```

An engineer is troubleshooting BGP on a device but discovers that the clock on the device does not correspond to the time stamp of the log entries. Which action ensures consistency between the two times?

- A. Configure the service timestamps log uptime command in global configuration mode.
- B. Configure the logging clock synchronize command in global configuration mode.
- C. Configure the service timestamps log datetime localtime command in global configuration mode.
- D. Make sure that the clock on the device is synchronized with an NTP server.

Answer: D

NEW QUESTION 8

Refer to the exhibit.

```
access-list 100 deny tcp any any eq 465
access-list 100 deny tcp any eq 465 any
access-list 100 permit tcp any any eq 80
access-list 100 permit tcp any eq 80 any
access-list 100 permit udp any any eq 443
access-list 100 permit udp any eq 443 any
```

During troubleshooting it was discovered that the device is not reachable using a secure web browser. What is needed to fix the problem?

- A. permit tcp port 443
- B. permit udp port 465
- C. permit tcp port 465
- D. permit tcp port 22

Answer: A

NEW QUESTION 9

Which attribute eliminates LFAs that belong to protected paths in situations where links in a network are connected through a common fiber?

- A. shared risk link group-disjoint
- B. linecard-disjoint
- C. lowest-repair-path-metric
- D. interface-disjoint

Answer: A

NEW QUESTION 10

While troubleshooting connectivity issues to a router, these details are noticed:

- Standard pings to all router interfaces, including loopbacks, are successful.
- Data traffic is unaffected.
- SNMP connectivity is intermittent.
- SSH is either slow or disconnects frequently.

Which command must be configured first to troubleshoot this issue?

- A. show policy-map control-plane
- B. show policy-map
- C. show interface | inc drop
- D. show ip route

Answer: A

NEW QUESTION 10

Refer to the exhibit.

```
R1#show running-config | include aaa
aaa new-model
aaa authentication login default group tacacs+ local
aaa authentication login Console local
R1#show running-config | section line
line con 0
  logging synchronous
R1#
```

An engineer is trying to configure local authentication on the console line, but the device is trying to authenticate using TACACS+. Which action produces the desired configuration?

- A. Add the aaa authentication login default none command to the global configuration.
- B. Replace the capital “C” with a lowercase “c” in the aaa authentication login Console local command.
- C. Add the aaa authentication login default group tacacs+ local-case command to the global configuration.
- D. Add the login authentication Console command to the line configuration

Answer: D

NEW QUESTION 14

Which method changes the forwarding decision that a router makes without first changing the routing table or influencing the IP data plane?

- A. nonbroadcast multiaccess
- B. packet switching
- C. policy-based routing
- D. forwarding information base

Answer: C

NEW QUESTION 15

Which protocol is used to determine the NBMA address on the other end of a tunnel when mGRE is used?

- A. NHRP
- B. IPsec
- C. MP-BGP
- D. OSPF

Answer: D

NEW QUESTION 16

Which list defines the contents of an MPLS label?

- A. 20-bit label; 3-bit traffic class; 1-bit bottom stack; 8-bit TTL
- B. 32-bit label; 3-bit traffic class; 1-bit bottom stack; 8-bit TTL
- C. 20-bit label; 3-bit flow label; 1-bit bottom stack; 8-bit hop limit
- D. 32-bit label; 3-bit flow label; 1-bit bottom stack; 8-bit hop limit

Answer: A

NEW QUESTION 19

Which statement about MPLS LDP router ID is true?

- A. If not configured, the operational physical interface is chosen as the router ID even if a loopback is configured.
- B. The loopback with the highest IP address is selected as the router ID.
- C. The MPLS LDP router ID must match the IGP router ID.
- D. The force keyword changes the router ID to the specified address without causing any impact.

Answer: B

NEW QUESTION 20

Refer to the exhibit.

```
TAC+: TCP/IP open to 171.68.118.101/49 failed --
Destination unreachable; gateway or host down
AAA/AUTHEN (2546660185): status = ERROR
AAA/AUTHEN/START (2546660185): Method=LOCAL
AAA/AUTHEN (2546660185): status = FAIL
As1 CHAP: Unable to validate Response. Username chapuser: Authentication failure
```

Why is user authentication being rejected?

- A. The TACACS+ server expects “user”, but the NT client sends “domain/user”.
- B. The TACACS+ server refuses the user because the user is set up for CHAP.
- C. The TACACS+ server is down, and the user is in the local database.
- D. The TACACS+ server is down, and the user is not in the local database.

Answer: D

NEW QUESTION 21

Which statement about IPv6 ND inspection is true?

- A. It learns and secures bindings for stateless autoconfiguration addresses in Layer 3 neighbor tables.
- B. It learns and secures bindings for stateless autoconfiguration addresses in Layer 2 neighbor tables.
- C. It learns and secures bindings for stateful autoconfiguration addresses in Layer 3 neighbor tables.
- D. It learns and secures bindings for stateful autoconfiguration addresses in Layer 2 neighbor tables.

Answer: B

NEW QUESTION 23

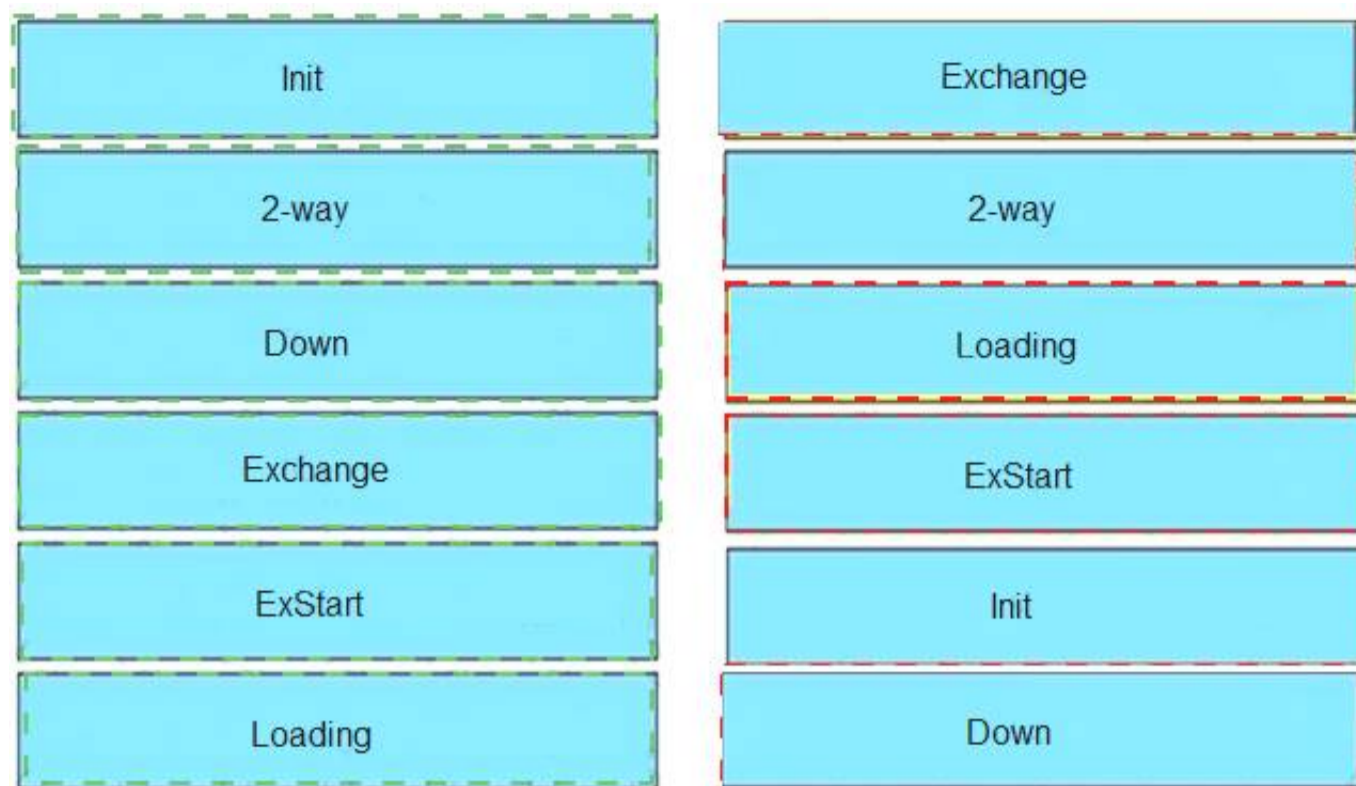
Drag and drop the OSPF adjacency states from the left onto the correct descriptions on the right.

Init	Each router compares the DBD packets that were received from the other router.
2-way	Routers exchange information with other routers in the multiaccess network.
Down	The neighboring router requests the other routers to send missing entries.
Exchange	The network has already elected a DR and a backup BDR.
ExStart	The OSPF router ID of the receiving router was not contained in the hello message.
Loading	No hellos have been received from a neighbor router.

- A. Mastered
- B. Not Mastered

Answer: A

Explanation:



NEW QUESTION 28

.....

Thank You for Trying Our Product

* 100% Pass or Money Back

All our products come with a 90-day Money Back Guarantee.

* One year free update

You can enjoy free update one year. 24x7 online support.

* Trusted by Millions

We currently serve more than 30,000,000 customers.

* Shop Securely

All transactions are protected by VeriSign!

100% Pass Your 300-410 Exam with Our Prep Materials Via below:

<https://www.certleader.com/300-410-dumps.html>