



**Cisco**

## **Exam Questions 400-007**

Cisco Certified Design Expert (CCDE v3.0) Written Exam

### NEW QUESTION 1

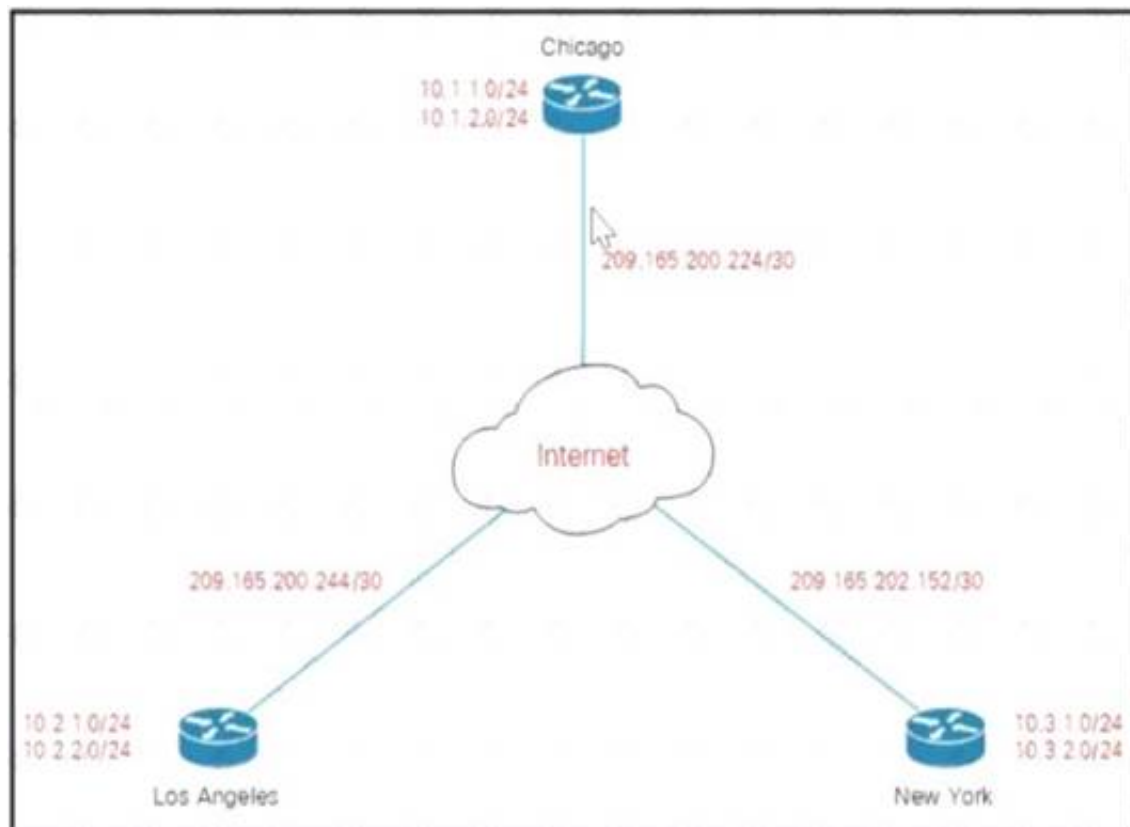
An enterprise network has two core routers that connect to 200 distribution routers and uses full-mesh IBGP peering between these routers as its routing method. The distribution routers are experiencing high CPU utilization due to the BGP process. Which design solution is the most cost effective?

- A. Implement route reflectors on the two core routers
- B. Increase the memory on the core routers
- C. Implement e BGP between the core and distribution routers
- D. Increase the memory on the distribution routers
- E. Increase bandwidth between the core routers

**Answer:** A

### NEW QUESTION 2

Refer to the exhibit.



Company XYZ must design a DMVPN tunnel between the three sites Chicago is going to act as the NHS and the company wants DMVPN to detect peer endpoint failures Which technology should be used in the design?

- A. VPLS
- B. IP SLA
- C. GRE
- D. L2TPv3

**Answer:** B

### NEW QUESTION 3

According to the CIA triad principles for network security design, which principle should be priority for a Zero Trust network?

- A. requirement for data-in-motion encryption and 2FA authentication
- B. requirement for data-at-rest encryption for user identification within the VPN termination hardware
- C. categorization of systems, data, and enterprise BYOD assets that are connected to network zones based on individual privacy needs
- D. ensuring that authorized users have high-availability system access from defined zones to defined systems or zones

**Answer:** A

### NEW QUESTION 4

As a network designer you need to support an enterprise with hundreds of remote sites connected over a single WAN network that carries different types of traffic, including VoIP, video, and data applications which of following design considerations will not impact design decision?

- A. Focus on the solution instead of the problem, which helps to reduce downtime duration
- B. The location of the data collection
- C. What direction the data or flows should be metered
- D. Identify traffic types and top talkers over this link

**Answer:** A

### NEW QUESTION 5

Sometimes SDN leverages various overlay networking technologies to create layer(s) of network abstraction. What describes an overlay network?

- A. It transmits packets that traverse over network devices like switches and routers
- B. It encapsulates packets at source and destination, which incurs additional overhead
- C. Packet delivery and reliability occurs at Layer 3 and Layer 4
- D. It is responsible for the delivery of packets; NAT- or VRF-based segregation is required

Answer: B

#### NEW QUESTION 6

Company XYZ connects its sites over a private WAN. Their overlay network is running a DMVPN setup where the headquarters site is the hub. The company is planning on implementing multicast routing on the network. What should be used in the multicast routing design?

- A. PIM dense mode with RP located at the hub
- B. PIM sparse mode with RP located at each remote site
- C. PIM sparse mode with RP located at the hub
- D. PIM dense mode with RP located at each remote site

Answer: C

#### Explanation:

<https://www.ccexpert.us/routing-switching-2/dynamic-multipoint-vpn.html>

#### NEW QUESTION 7

Which two characteristics are associated with 802.1s? (Choose two)

- A. 802.1s supports up to 1024 instances of 802.1
- B. 802.1 s is a Cisco enhancement to 802.1w.
- C. 802.1s provides for faster convergence over 802.1D and PVST+.
- D. CPU and memory requirements are the highest of all spanning-tree STP implementations.
- E. 802.1s maps multiple VLANs to the same spanning-tree instance

Answer: CE

#### NEW QUESTION 8

Which issue poses a challenge for security architects who want end-to-end visibility of their networks?

- A. too many overlapping controls
- B. too many disparate solutions and technology silos
- C. an overabundance of manual processes
- D. a network security skills shortage

Answer: B

#### NEW QUESTION 9

Which two foundational aspects of IoT are still evolving and being worked on by the industry at large? (Choose two)

- A. WiFi protocols
- B. Regulatory domains
- C. Low energy Bluetooth sensors
- D. IoT consortia
- E. Standards

Answer: AC

#### NEW QUESTION 10

What is a disadvantage of the traditional three-tier architecture model when east west traffic between different pods must go through the distribution and core layers?

- A. low bandwidth
- B. security
- C. scalability
- D. high latency

Answer: A

#### NEW QUESTION 10

Refer to the exhibit.



Company XYZ BGP topology is as shown in the diagram. The interface on the LA router connected toward the 10.1.5.0/24 network is faulty and is going up and down, which affects the entire routing domain. Which routing technique can be used in the routing policy design so that the rest of the network is not affected by the flapping issue?

- A. Use route dampening on LA router for the 10.1.5.0/24 network so that it does not get propagated when it flaps up and down
- B. Use route filtering on Chicago router to block the 10.1.5.0/24 network from coming in from the LA router
- C. Use route filtering on LA router to block the 10.15.0/24 network from getting propagated toward Chicago and New York
- D. Use route aggregation on LA router to summarize the 10.1.4.0/24, 10.1.5.0/24, 10.1.6.0/24, and 10.1.7.0/24 networks toward Chicago

**Answer:** D

#### NEW QUESTION 12

Company XYZ network runs IPv4 and IPv6 and they want to introduce a multidomain, multicast-based network. The new design should use a flavor of PIM that forwards traffic using SPT. Which technology meets this requirement?

- A. PIM-DM
- B. PIM-SM
- C. PIM-SSM
- D. BIDIR-PIM

**Answer:** C

#### NEW QUESTION 14

Company XYZ uses an office model where the employees can use any open desk and plug their laptops in. They want to authenticate the end users using their domain username and password before allowing them access to the network. The design must also accommodate the ability of controlling traffic within the same group or subnet if a macro (or micro) segmentation-based model is adopted in the future. Which protocol can be recommended for this design to authenticate end users?

- A. LDAP
- B. EAP
- C. TACACS+
- D. RADIUS

**Answer:** D

#### Explanation:

<https://www.networkstraining.com/what-is-cisco-ise/>

#### NEW QUESTION 16

What is a web-based model in which a third-party provider hosts applications that are available to customers over the Internet?

- A. PaaS
- B. SaaS
- C. IaaS
- D. WaaS

**Answer:** B

#### NEW QUESTION 18

A Service Provider is designing a solution for a managed CE service to a number of local customers using a single CE platform and wants to have logical separation on the CE platform using Virtual Routing and Forwarding (VRF) based on IP address ranges or packet length. Which is the most scalable solution to provide this type of VRF Selection process on the CE edge device?

- A. Static Routes for Route Leaking
- B. Policy Based Routing
- C. OSPF per VRF Instance
- D. Multi-Protocol BGP

**Answer:** B

#### NEW QUESTION 21

Which two points must network designers consider when designing a new network design or when evaluating an existing network design to help them understand the high-level design direction with regards to the security aspects? (Choose two)

- A. Consider Business objectives and goals
- B. Consider organization's security policy standards
- C. Consider for only multi-site networks
- D. Consider for only new network technologies and components

**Answer:** AB

#### NEW QUESTION 25

You were tasked to enhance the security of a network with these characteristics:

- A pool of servers is accessed by numerous data centers and remote sites
- The servers are accessed via a cluster of firewalls
- The firewalls are configured properly and are not dropping traffic
- The firewalls occasionally cause asymmetric routing of traffic within the server data center.

Which technology should you recommend to enhance security by limiting traffic that could originate from a hacker compromising a workstation and redirecting flows at the servers?

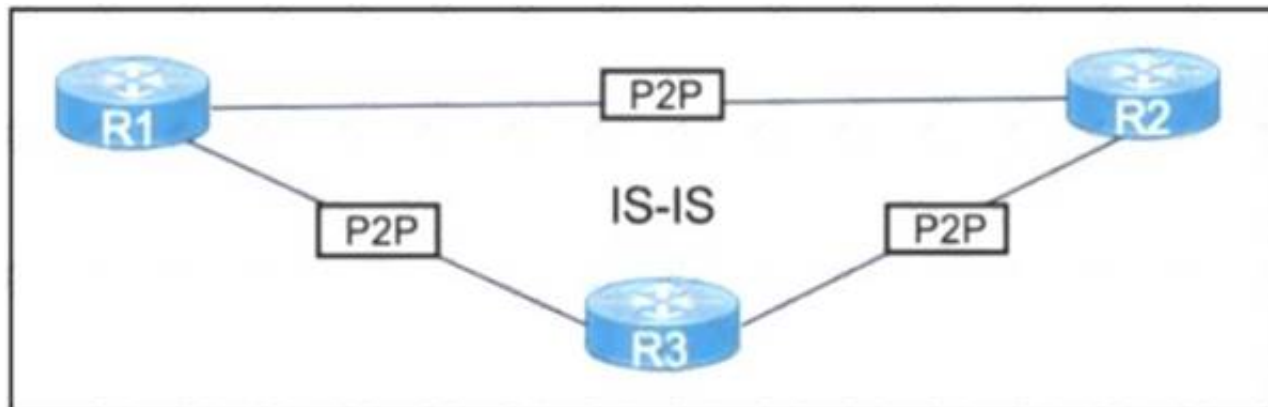
- A. Poison certain subnets by adding static routes to Null0 on the core switches connected to the pool of servers.

- B. Deploy uRPF strict mode.
- C. Limit sources of traffic that exit the server-facing interface of the firewall cluster with ACLs.
- D. Deploy uRPF loose mode

**Answer: C**

#### NEW QUESTION 30

Refer to the exhibit.



After a network audit a network engineer must optimize the current network convergence time The proposed solution must consider link layer and control plane failures. Which solution meets the requirements?

- A. Configure debounce timers
- B. Increase fast hello timers
- C. Implement BFD
- D. Enable LSP fast flood

**Answer: C**

#### NEW QUESTION 33

You are using iSCSI to transfer files between a 10 Gigabit Ethernet storage system and a 1 Gigabit Ethernet server The performance is only approximately 700 Mbps and output drops are occurring on the server switch port. Which action will improve performance in a cost-effective manner?

- A. Change the protocol to CIFS.
- B. Increase the queue to at least 1 GB
- C. Use a WRED random drop policy
- D. Enable the TCP Nagle algorithm on the receiver

**Answer: A**

#### NEW QUESTION 34

Which two statements describe the usage of the IS-IS overload bit technique? (Choose two )

- A. If overload-bit is set on a Level 2 intermediate system, the other Level 2 intermediate systems in the topology will stop using the overloaded IS to forward Level 2 traffic However, the intermediate system can still forward Level 1 traffic
- B. It can be set in intermediate systems (IS-IS routers) to prioritize control plane CSNP packets.
- C. It can be used to automatically synchronize the link-state database between Level 1 intermediate systems
- D. It can be set in intermediate systems (IS-IS routers) to avoid traffic black holes until routing protocols are fully converged after a reload operation.
- E. It can be set in intermediate systems (IS-IS routers) to attract transit traffic from other intermediate systems

**Answer: AD**

#### NEW QUESTION 37

Which two statements describe the hierarchical LAN design model? (Choose two)

- A. It is a well-understood architecture that provides scalability
- B. It is the best design for modern data centers
- C. It is the most optimal design but is highly complex
- D. It provides a simplified design
- E. Changes, upgrades, and new services can be introduced in a controlled and staged manner

**Answer: AE**

#### NEW QUESTION 39

The administrator of a small branch office wants to implement the Layer 2 network without running STP The office has some redundant paths Which mechanism can the administrator use to allow redundancy without creating Layer 2 loops?

- A. Use double-sided VPC on both switches
- B. Use two port channels as Flex links
- C. Use fabric path with ECMP
- D. Use 802.3ad link bundling.

**Answer: B**

#### NEW QUESTION 44



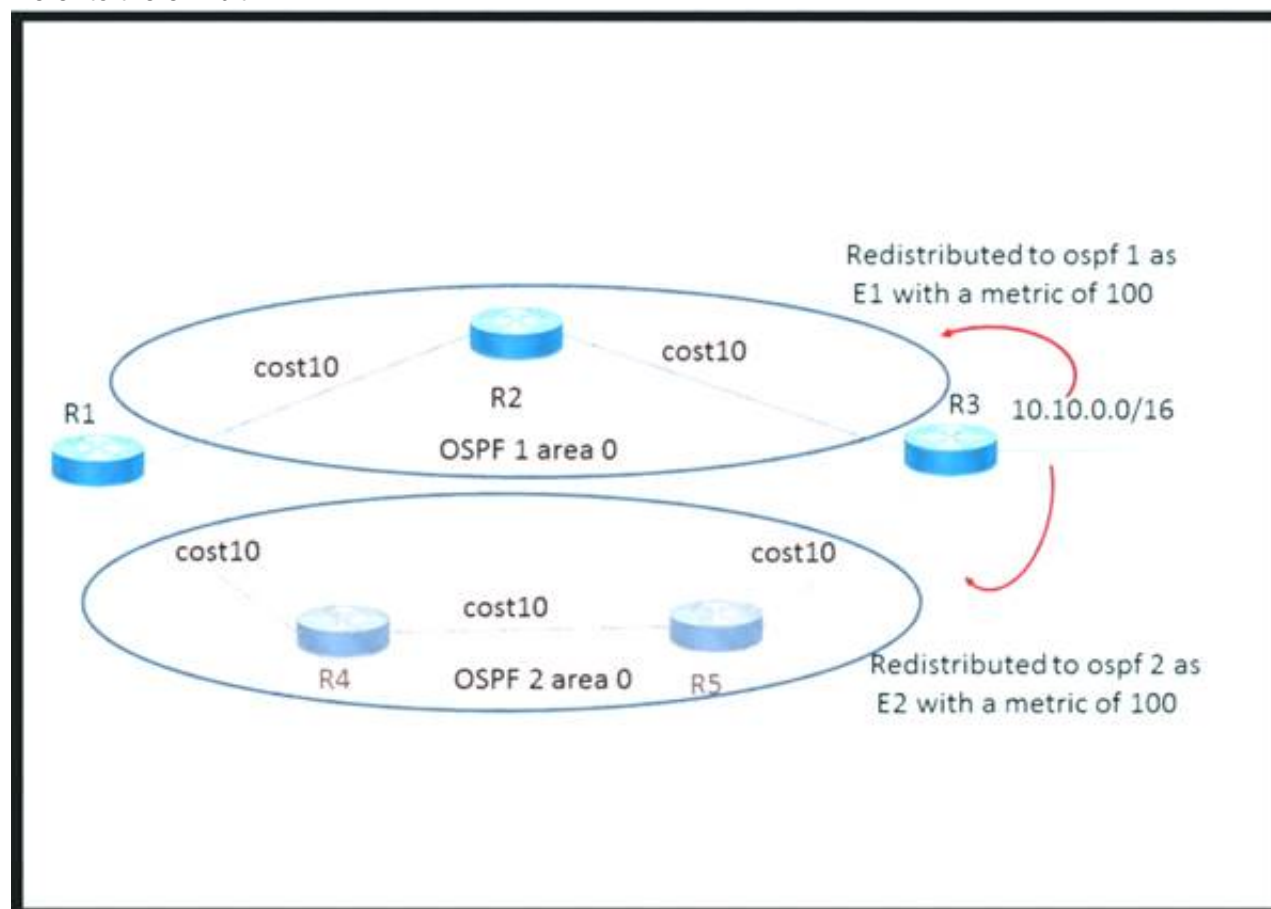
A financial company requires that a custom TCP-based stock-trading application be prioritized over all other traffic for the business due to the associated revenue. The company also requires that VoIP be prioritized for manual trades. Which directive should be followed when a QoS strategy is developed for the business?

- A. Allow VoIP and the custom application to share the same priority queue,
- B. The custom application and VoIP must be assigned their own separate priority queue.
- C. Interleave the custom application with other TCP applications in the same CBWR
- D. Avoid placing the custom application in a CBWFQ queue that contains other

**Answer: C**

#### NEW QUESTION 46

Refer to the exhibit.



The network 10.10.0.0/16 has been redistributed to OSPF processes and the best path to the destination from R1 has been chosen as R1-R2-R3. A failure occurred on the link between R2 and R3 and the path was changed to R1-R4-R5-R3. What happens when the link between R2 and R3 is restored?

- A. The path R1-R4-R5-R3 continues to be the best path because the metric is better
- B. The path reverts back to R1-R2-R3 because the route type is E1
- C. The path R1-R4-R5-R3 continues to be the best path because OSPF does not compare the metrics between two domains
- D. The path reverts to R1-R2-R3 because this was the previous best path

**Answer: D**

#### Explanation:

When the link between R2 and R3 is restored, the path reverts back to R1-R2-R3 because this was the previous best path. This is because OSPF uses the Dijkstra algorithm to calculate the shortest path tree (SPT) and the path with the lowest cost is chosen as the best path. In this case, the cost of the path R1-R2-R3 is lower than the cost of the path R1-R4-R5-R3, so the path R1-R2-R3 is chosen as the best path. OSPF also has a preference order for different types of routes, such as intra-area, inter-area, external type 1, external type 2, NSSA type 1, and NSSA type 2. However, this preference order only applies when OSPF has to choose between routes of different types to the same destination. In this scenario, both paths are external type 2 routes so the preference order does not affect the path selection.

#### NEW QUESTION 47

You are designing the QoS policy for a company that is running many TCP-based applications. The company is experiencing tail drops for these applications. The company wants to use a congestion avoidance technique for these applications. Which QoS strategy can be used to fulfill the requirement?

- A. weighted fair queuing
- B. weighted random early detection
- C. low-latency queuing
- D. first-in first-out

**Answer: B**

#### NEW QUESTION 48

In search of a system capable of hosting, monitoring compiling, and testing code in an automated way, what can be recommended to the organization?

- A. Jenkins
- B. Ansible
- C. Perl
- D. Chef

**Answer: A**

#### NEW QUESTION 52

Drag and drop the FCAPS network management reference models from the left onto the correct definitions on the right.

Fault Management	ensures that network transit quality remains at acceptable levels
Configuration Management	gathers usage statistics for users and business units
Accounting Management	gathers and stores configuration code from network devices
Performance Management	recognizes, isolates, corrects, and logs events that occur in the network
Security Management	controls access to assets in the network

- A. Mastered
- B. Not Mastered

**Answer:** A

**Explanation:**

<b>Fault Management</b>	= Recognize, isolates, corrects, and logs events that occur in the network
<b>Configuration Management</b>	= Gathers and stores configuration code from network devices
<b>Performance Management</b>	= ensures that network transit quality remains at acceptable levels
<b>Security Management</b>	= Controls access to assets in the network
<b>Accounting Management</b>	= gathers usage statistics for users and business units

#### NEW QUESTION 54

Company XYZ wants to redesign the Layer 2 part of their network and wants to use all available uplinks for increased performance. They also want to have end host reachability supporting conversational learning. However, due to design constraints, they cannot implement port-channel on the uplinks. Which other technique can be used to make sure the uplinks are in active/active state?

- A. TRILL
- B. LISP
- C. MSTP
- D. switch stack

**Answer:** B

#### NEW QUESTION 56

Company XYZ is designing the IS-IS deployment strategy for their multiarea IS-IS domain. They want IS-IS neighbour relationships to be minimized on each network segment and want to optimize the size of the IS-IS LSDB on each router. Which can design can be used to meet these requirements?

- A. Design all routers as Level 2 router
- B. Set the links between the routers as Level 1 with the area
- C. Design the network so that the routers connecting to other areas are Level 2 routers and internal routers are Level 1
- D. Design the network so that all routers are Level 1 routers
- E. Design the network so that the routers connecting to other areas are Level 1/Level 2 routers and internal routers are Level 1

**Answer:** D

#### NEW QUESTION 58

Company XYZ wants to deploy OSPF. The design plan requires that two OSPF networks be mutually redistributed at multiple locations and ensure end-to-end connectivity to all of the company's networks Which technology can be used to fulfill the requirements while avoiding the creation of routing loops?

- A. Create a virtual link between ASBRs.
- B. Change the router ID for both ASBRs.
- C. Redistribute routes as external type 2 routes.
- D. Use route maps on ASBRs to filter routes with tags so they are not redistributed.

**Answer:** D

**Explanation:**

<https://www.cisco.com/c/en/us/support/docs/ip/open-shortest-path-first-ospf/4170-ospfprocesses.html>

**NEW QUESTION 62**

An enterprise organization currently provides WAN connectivity to their branch sites using MPLS technology, and the enterprise network team is considering rolling out SD-WAN services for all sites.

With regards to the deployment planning, drag and drop the actions from the left onto the corresponding steps on the right.

Select deployment models between virtual server software and hardware-based SD-WAN appliances.	step 1
Conduct a pilot test to observe and record unexpected issues.	step 2
Make an assessment of running protocols and application usage in the network.	step 3
Evaluate existing circuits and performance to get details of connectivity cost and reliability.	step 4
Layout transport plan based on business prioritizes traffic and the unique bandwidth requirements of each specific application.	step 5
Understand the traffic monitoring requirements and capabilities.	step 6

- A. Mastered
- B. Not Mastered

**Answer:** A

**Explanation:**

Table Description automatically generated with medium confidence

**NEW QUESTION 67**

Company XYZ is revisiting the security design for their data center because they now have a requirement to control traffic within a subnet and implement deep packet inspection Which technology meets the updated requirements and can be incorporated into the design?

- A. routed firewall
- B. VLAN ACLs on the switch
- C. transparent firewall
- D. zone-based firewall on the Layer 3 device

**Answer:** C

**NEW QUESTION 72**

Which purpose of a dynamically created tunnel interface on the design of IPv6 multicast services Is true?

- A. first-hop router registration to the RP
- B. multicast client registration to the RP
- C. multicast source registration to the RP
- D. transport of all IPv6 multicast traffic

**Answer:** D

**NEW QUESTION 75**

In an OSPF network with routers connected together with Ethernet cabling, which topology typically takes the longest to converge?

- A. partial mesh
- B. full mesh
- C. ring
- D. squared
- E. triangulated

**Answer:** B

**NEW QUESTION 77**

An engineer must design a network for a company that uses OSPF LFA to reduce loops. Which type of loop would be reduced by using this design?

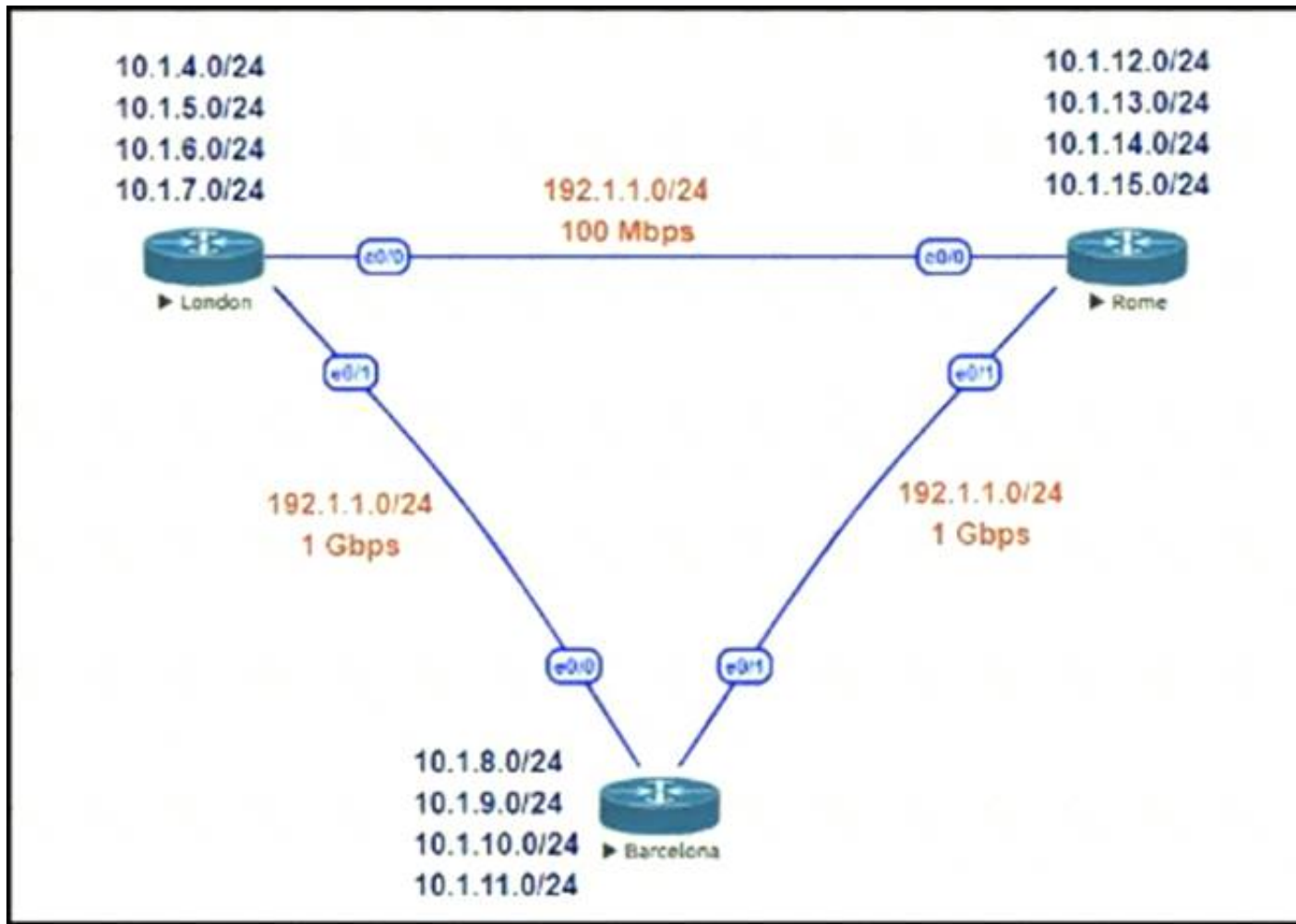
- A. DTP
- B. micro loops
- C. STP
- D. REP

**Answer:** B



#### NEW QUESTION 81

Refer to the exhibit.



This network is running EIGRP as the routing protocol and the internal networks are being advertised in EIGRP. Based on the link speeds, all traffic between London and Rome is getting propagated via Barcelona and the direct link between London and Rome is not being utilized under normal working circumstances. The EIGRP design should allow for efficiency in the routing table by minimizing the routes being exchanged. The link between London and Rome should be utilized for specific routes. Which two steps accomplish this task? (Choose two.)

- A. Configure EIGRP route summarization on all the interfaces to summarize the internal LAN routes
- B. Filter the routes on the link between London and Barcelona
- C. Filter the routes on the link between London and Rome
- D. Configure route leaking of summary routes on the link between London and Rome

Answer: AD

#### NEW QUESTION 84

Company XYZ is running a redundant private WAN network using OSPF as the underlay protocol. The current design accommodates for redundancy in the network, but it is taking over 30 seconds for the network to reconverge upon failure. Which technique can be implemented in the design to detect such a failure in a subsecond?

- A. STP
- B. fast hello
- C. OSPF LFA
- D. BFD
- E. flex links

Answer: D

#### NEW QUESTION 88

Company XYZ is planning to deploy primary and secondary (disaster recovery) data center sites. Each of these sites will have redundant SAN fabrics and data protection is expected between the data center sites. The sites are 100 miles (160 km) apart and target RPO/RTO are 3 hrs and 24 hrs, respectively. Which two considerations must Company XYZ bear in mind when deploying replication in their scenario? (Choose two.)

- A. Target RPO/RTO requirements cannot be met due to the one-way delay introduced by the distance between sites.
- B. VSANs must be routed between sites to isolate fault domains and increase overall availability.
- C. Synchronous data replication must be used to meet the business requirements.
- D. Asynchronous data replication should be used in this scenario to avoid performance impact in the primary site.
- E. VSANs must be extended from the primary to the secondary site to improve performance and availability.

Answer: CD

#### Explanation:

synchronous data replication must be used to meet the business requirements, is incorrect. As described above, asynchronous replication would be a better choice in this scenario due to the distance between the data center sites and the target RPO/RTO requirements.  
 asynchronous data replication should be used in this scenario to avoid performance impact in the primary site, is correct. Asynchronous replication would allow Company XYZ to meet the target RPO/RTO requirements while avoiding the performance impact of synchronous replication.

#### NEW QUESTION 92

Which actions are performed at the distribution layer of the three-layer hierarchical network design model? (Choose two)

- A. Fast transport

- B. Reliability
- C. QoS classification and marking boundary
- D. Fault isolation
- E. Redundancy and load balancing

**Answer:** DE

#### NEW QUESTION 94

Company XYZ has 30 sites using MPLS L3 VPN and the company is now concerned about data integrity. The company wants to redesign the security aspect of their network based on these requirements:

- Securely transfer the corporate data over the private WAN
- Use a centralized configuration model.
- Minimize overhead on the tunneled traffic.

Which technology can be used in the new design to meet the company's requirements?

- A. S-VTI
- B. DMVPN
- C. MGRE
- D. GET VPN

**Answer:** D

#### NEW QUESTION 96

An IT service provider is upgrading network infrastructure to comply with PCI security standards. The network team finds that 802.1X and VPN authentication based on locally-significant certificates are not available on some legacy phones.

Which workaround solution meets the requirement?

- A. Replace legacy phones with new phones because the legacy phones will lose trust if the certificate is renewed.
- B. Enable phone VPN authentication based on end-user username and password.
- C. Temporarily allow fallback to TLS 1.0 when using certificates and then upgrade the software on legacy phones.
- D. Use authentication-based clear text password with no EAP-MD5 on the legacy phones.

**Answer:** B

#### NEW QUESTION 97

A business invests in SDN and develops its own SDN controller that, due to budget constraints, runs on a single controller. The controller actively places an exclusive lock on the configuration of the devices to ensure it is the only source of changes to the environment. What is the result if the controller fails?

- A. All device configurations are in read-only mode until the controller is restored.
- B. The control plane is unavailable until the controller is restored.
- C. If a device fails, the configuration backup is unavailable
- D. Manual changes are only possible until the controller is restored

**Answer:** B

#### NEW QUESTION 100

An engineer is designing a DMVPN network where OSPF has been chosen as the routing protocol A spoke-to-spoke 'J<ita propagation model must be set up Which two design considerations must be taken into account? (Choose two )

- A. Configure all the sites as network type broadcast
- B. The network type on all sites should be point-to-multipoint
- C. The network type should be point-to-multipoint for the hub and point-to-point for the spokes.
- D. The hub should be set as the DR by specifying the priority to 255.
- E. The hub should be the DR by changing the priority of the spokes to 0.

**Answer:** AE

#### NEW QUESTION 101

Company ABC uses IPv4-only. Recently they started deploying new endpoint devices. For operational reasons, IPv6 cannot be disabled on these new endpoint devices. Which security measure prevents the new endpoint from learning an IPv6 prefix from an attacker?

- A. Source Guard and Prefix Guard
- B. Router Advertisement Guard
- C. Prefix Guard
- D. Secure Neighbor Discovery

**Answer:** B

#### NEW QUESTION 102

Which design principal improves network resiliency?

- A. Added load-balancing
- B. Added redundancy
- C. Added confidentiality
- D. Added reliability

**Answer:** B

#### NEW QUESTION 104

Company XYZ is designing the network for IPv6 security and they have these design requirements:

- A switch or router must deny access to traffic from sources with addresses that are correct, but are topologically incorrect
- Devices must block Neighbor Discovery Protocol resolution for destination addresses that are not found in the binding table.

Which two IPv4 security features are recommended for this company? (Choose two)

- A. IPv6 DHCP Guard
- B. IPv6 Source Guard
- C. IPv6 Destination Guard
- D. IPv6 Prefix Guard
- E. IPv6 RA Guard

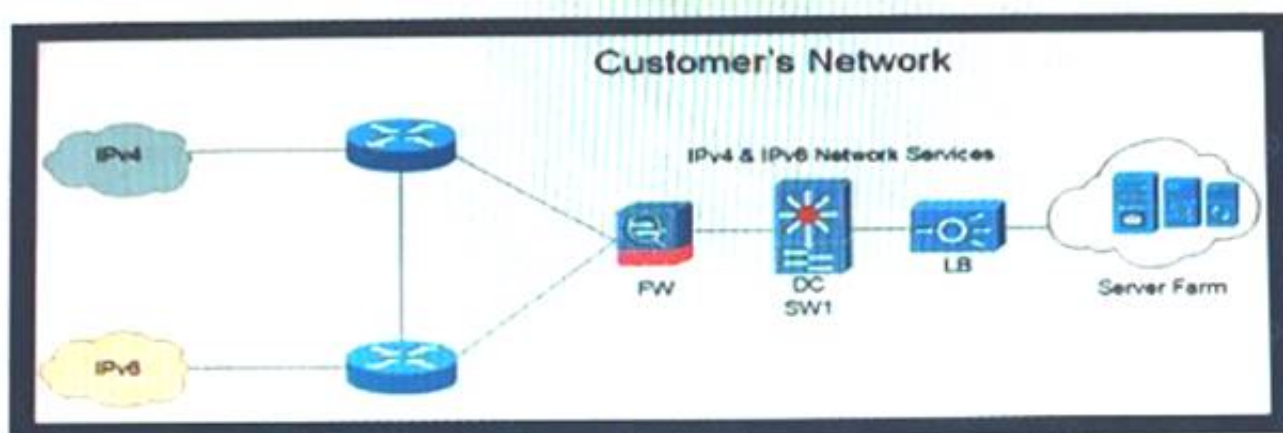
**Answer:** CD

#### Explanation:

[https://www.cisco.com/c/dam/global/ja\\_jp/td/docs/ios-xml/ios/ipv6\\_fhsec/configuration/xe-16/ip6f-xe-16-book](https://www.cisco.com/c/dam/global/ja_jp/td/docs/ios-xml/ios/ipv6_fhsec/configuration/xe-16/ip6f-xe-16-book).

#### NEW QUESTION 106

Refer to the exhibit.



Company XYZ is currently running IPv4 but has decided to start the transition into IPv6. The initial objective is to allow communication based on IPv6 wherever possible, and there should still be support in place for devices that only support IPv4. These devices must be able to communicate to IPv6 devices as well. Which solution must be part of the design?

- A. address family translation
- B. dual stack
- C. host-to-host tunneling
- D. 6rd tunneling

**Answer:** B

#### NEW QUESTION 107

What are two top cloud-native security challenges faced by today's cloud-oriented organizations? (Choose two.)

- A. establishing user roles
- B. polymorphism
- C. lack of visibility and tracking
- D. increased attack surface
- E. user credential validation

**Answer:** CD

#### NEW QUESTION 111

Which two statements explain the operation of BFD asynchronous mode? (Choose two )

- A. BFD asynchronous mode with echo packets combines the control packets and echo packets into a single packet.
- B. BFD asynchronous mode without echo packets uses control packets, and BFD asynchronous mode with echo packets does not.
- C. BFD asynchronous mode with and without echo packets use control packets.
- D. BFD asynchronous without echo packets has control packets sent back to the originating router, which echoes the control packet to detect failures.
- E. BFD asynchronous mode with echo packets uses separate control packets and echo packets.

**Answer:** CE

#### NEW QUESTION 112

You are designing a large-scale DMVPN network with more than 500 spokes using EIGRP as the IGP protocol Which design option eliminates potential tunnel down events on the spoke routers due to the holding time expiration?

- A. Increase the hold queue on the physical interface of the hub router.
- B. Increase the hold queue on the tunnel interface of the spoke routers
- C. Increase the hold queue on the tunnel interface of the hub router
- D. Apply QoS for pak\_priority class
- E. Increase the hold queue on the physical interface of the spoke routers.

**Answer:** C

#### NEW QUESTION 117

Your network operations team is deploying Access Control Lists (ACLs) across your Internet gateways. They wish to place an ACL inbound on the Internet gateway interface facing the core network (the "trusted" interface). Which IP address would the ACL need for traffic sourced from the inside interface, to match the source address of the traffic?

- A. inside global
- B. outside global
- C. inside local
- D. outside local

**Answer: C**

#### NEW QUESTION 118

What are two design constraints in a standard spine and leaf architecture? (Choose two.)

- A. Spine switches can connect to each other.
- B. Each spine switch must connect to every leaf switch.
- C. Leaf switches must connect to each other.
- D. Endpoints connect only to the spine switches.
- E. Each leaf switch must connect to every spine switch.

**Answer: BE**

#### NEW QUESTION 121

While designing a switched topology, in which two options is UplinkFast recommended? (Choose two )

- A. when switches of different spanning-tree types are connected (for example, 802.1d connecting to 802.1w)
- B. 802.1d connecting to 802.1w
- C. on distribution layer switches
- D. when hello timers are changed to more aggressive values
- E. on access layer switches
- F. on the core switches

**Answer: AD**

#### NEW QUESTION 123

Company XYZ wants to improve the security design of their network to include protection from reconnaissance and DoS attacks on their sub interfaces destined toward next hop routers. Which technology can be used to prevent these types of attacks?

- A. MPP
- B. CPPr
- C. CoPP
- D. DPP

**Answer: B**

#### Explanation:

<https://learningnetwork.cisco.com/s/question/0D53i00000KsuyvCAB/copp-vs-cppr>

#### NEW QUESTION 125

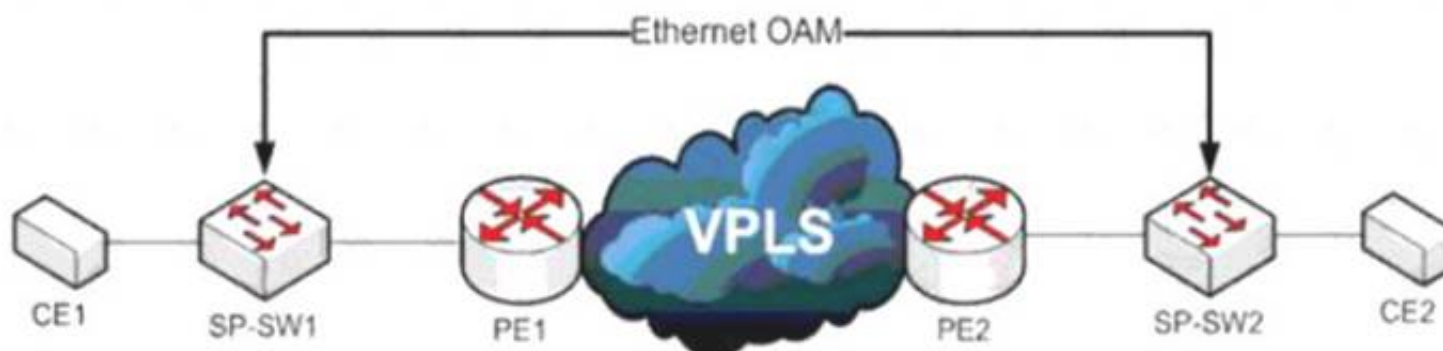
Company XYZ wants to secure the data plane of their network. Which two technologies can be included in the security design? (Choose two)

- A. DAI
- B. IP Source Guard
- C. BEEP
- D. CPPr
- E. MPP

**Answer: AB**

#### NEW QUESTION 128

Refer to the exhibit



A service provider has a requirement to use Ethernet OAM to detect end-to-end connectivity failures between SP-SW1 and SP-SW2. Which two ways to design this solution are true? (Choose two)

- A. Enable unicast heartbeat messages to be periodically exchanged between MEPs
- B. Enable Connectivity Fault Management on the SP switches



- C. Use upward maintenance endpoints on the SP switches
- D. Forward E-LMI PDUs over VPLS
- E. Forward LLD PDUs over the VPLS

**Answer:** BC

#### NEW QUESTION 132

Company XYZ has designed their network to run GRE over IPsec on their Internet-based VPN to connect two sites. Which IPsec tunneling feature can they enable to optimize the data flow while ensuring that the headers contain no duplicate IP addresses?

- A. Transport Mode in IPsec Phase I
- B. Transport Mode in IPsec Phase II
- C. Tunnel Mode in IPsec Phase II
- D. Tunnel Mode in IPsec Phase I

**Answer:** B

#### NEW QUESTION 133

A software-defined networking (SDN) controller teams network topology information by using BGP link-state sessions with the route reflectors of an MPLS-enabled network. The controller then uses the topology information to apply on-demand traffic policies to the network through a protocol that is supported from all Layer 3 routers. Each policy is represented as a RIB entry in the control plane of the router. Which SDN model has been implemented?

- A. SDN centralized
- B. SDN traffic engineering
- C. SD-WAN
- D. SDN hybrid

**Answer:** B

#### NEW QUESTION 135

You have been tasked with designing a data center interconnect as part of business continuity. You want to use FCoE over this DCI to support synchronous replication. Which two technologies allow for FCoE via lossless Ethernet or data center bridging? (Choose two.)

- A. DWDM
- B. EoMPLS
- C. SONET/SDH
- D. Multichassis EtherChannel over Pseudowire
- E. VPLS

**Answer:** AC

#### NEW QUESTION 138

Which two characteristics apply to firewall transparent mode operations in a firewall solution design? (Choose two.)

- A. Changes in the existing IP addressing and subnets are required
- B. The firewall can participate actively on spanning tree.
- C. Multicast traffic can traverse the firewall.
- D. OSPF adjacencies can be established through the firewall
- E. The firewall acts like a router hop in the network.

**Answer:** CD

#### NEW QUESTION 139

What are two advantages of controller-based networks versus traditional networks? (Choose two.)

- A. the ability to have forwarding tables at each device
- B. more flexible configuration per device
- C. more consistent device configuration
- D. programmatic APIs that are available per device
- E. the ability to configure the features for the network rather than per device

**Answer:** CE

#### NEW QUESTION 141

The Agile Manifesto is a document that defines the key values and principles behind the Agile philosophy and helps development teams work more efficiently and sustainably. Each of the four key values is split into two sections: a left-hand side and a right-hand side. In other words, though there is value in the items on the right, we value the items on the left more. What is one of the key values of the Agile Manifesto?

- A. comprehensive documentation over working software
- B. contract negotiation over customer collaboration
- C. individuals and interactions over processes and tools
- D. following a plan over responding to change

**Answer:** C

#### NEW QUESTION 143

Customer XYZ network consists of an MPLS core. IS-IS running as IGP a pair of BGP route reflectors for route propagation, and a few dozens of MPLS-TE tunnels for specific tactical traffic engineering requirements. The customer's engineering department has some questions about the use of the Overload Bit in the IS-IS networks and how it could be used to improve their current network design. Which two concepts about the Overload Bit are true? (Choose two.)

- A. It can be set on a router during the startup process for a fixed period of time
- B. Networks advertised within the LSPs of the respective node will become unreachable
- C. It forces the midpoint MPLS-TE node to reoptimize the primary tunnels going through the OL node.
- D. It can be set on a router until other interacting protocols have signaled convergence.
- E. It is not recommended on BGP Route Reflectors

Answer: AD

NEW QUESTION 145

A green data center is being deployed and a design requirement is to be able to readily scale server virtualization Which IETF standard technology can provide this requirement?

- A. data center bridging
- B. unified fabric
- C. Transparent Interconnection of Lots of Links
- D. fabric path

Answer: C

NEW QUESTION 149

Drag and drop the design use cases from the left onto the correct uRPF techniques used to prevent spoofing attacks Not all options are used.

to check whether a route to a given IP address exists without regard to its incoming interface	strict mode
to filter Bogon IP addresses	feasible mode
to ensure the incoming interface is the best reverse path to a given IP address	loose mode
when there are alternate routes to a given IP address	

- A. Mastered
- B. Not Mastered

Answer: A

Explanation:

to check whether a route to a given IP address exists without regard to its incoming interface	to ensure the incoming interface is the best reverse path to a given IP address
to filter Bogon IP addresses	when there are alternate routes to a given IP address
to ensure the incoming interface is the best reverse path to a given IP address	to filter Bogon IP addresses
when there are alternate routes to a given IP address	

NEW QUESTION 152

The SD-WAN architecture is composed of separate orchestration management, control, and data planes Which activity happens at the orchestration plane?

- A. automatic onboarding of the SD-WAN routers into the SD-WAN overlay
- B. decision-making process on where traffic flows
- C. packet forwarding
- D. central configuration and monitoring

Answer: D

NEW QUESTION 154

Company XYZ wants to use the FCAPS ISO standard for network management design. The focus of the design should be to monitor and keep track of any performance issues by continuously collecting and analyzing statistical information to monitor, correct, and optimize any reduced responsiveness across the

network. Which layer accomplishes this design requirement?

- A. fault management
- B. accounting management
- C. performance management
- D. security management

**Answer:** C

#### NEW QUESTION 158

The Layer 3 control plane is the intelligence over the network that steers traffic toward its intended destination. Which two techniques can be used in service provider-style networks to offer a more dynamic, flexible, controlled, and secure control plane design? (Choose two.)

- A. access control lists
- B. firewalls
- C. QoS policy propagation with BGP
- D. remote black-holing trigger
- E. prefix lists

**Answer:** DE

#### NEW QUESTION 161

A customer migrates from a traditional Layer 2 data center network into a new SDN-based, spine-and-leaf VXLAN EVPN data center within the same location. The networks are joined to enable host migration at Layer 2. Which activity should be completed each time a legacy network is migrated?

- A. The migrated VLAN should be pruned from the Layer 2 interconnects.
- B. The migrated network should have a VXLAN VNID configured within the new network.
- C. The migrated network should be advertised to the EVPN network as a Type 2 network.
- D. The migrated network should be added to the EVPN BGP routing.

**Answer:** C

#### NEW QUESTION 165

What are two descriptions of network optimization? (Choose two.)

- A. maintain high availability
- B. proactive network management
- C. network redesign
- D. network health maintenance
- E. identify network requirements

**Answer:** AD

#### NEW QUESTION 168

An architect prepares a network design for a startup company. The design must be able to meet business requirements while the business grows and divests due to rapidly changing markets. What is the highest priority in this design?

- A. The network should be hierarchical
- B. The network should be modular.
- C. The network should be scalable.
- D. The network should have a dedicated core.

**Answer:** A

#### NEW QUESTION 172

Which methodology is the leading lifecycle approach to network design and implementation?

- A. PPDIOO
- B. Waterfall model
- C. Spiral model
- D. V model

**Answer:** A

#### NEW QUESTION 173

Which relationship between iBGP and the underlying physical topology is true?

- A. iBGP full mesh requirement does not dictate any specific network topology.
- B. iBGP can work only on a ring network topology with a link-state protocol like OSPF or IS-IS
- C. iBGP full mesh requires an underlying fully meshed network topology.
- D. iBGP does not work on a ring network topology even with an underlying IGP.

**Answer:** A

#### Explanation:

iBGP peers can be multiple hops away, not like eBGP that needs direct connection (or ebgp-multihop defined). thus, only IP connectivity between two peers is

required for an adjacency to form.

#### NEW QUESTION 175

Which two factors must be considered for high availability in campus LAN designs to mitigate concerns about unavailability of network resources? (Choose two.)

- A. device resiliency
- B. device type
- C. network type
- D. network resiliency
- E. network size

**Answer: AD**

#### NEW QUESTION 178

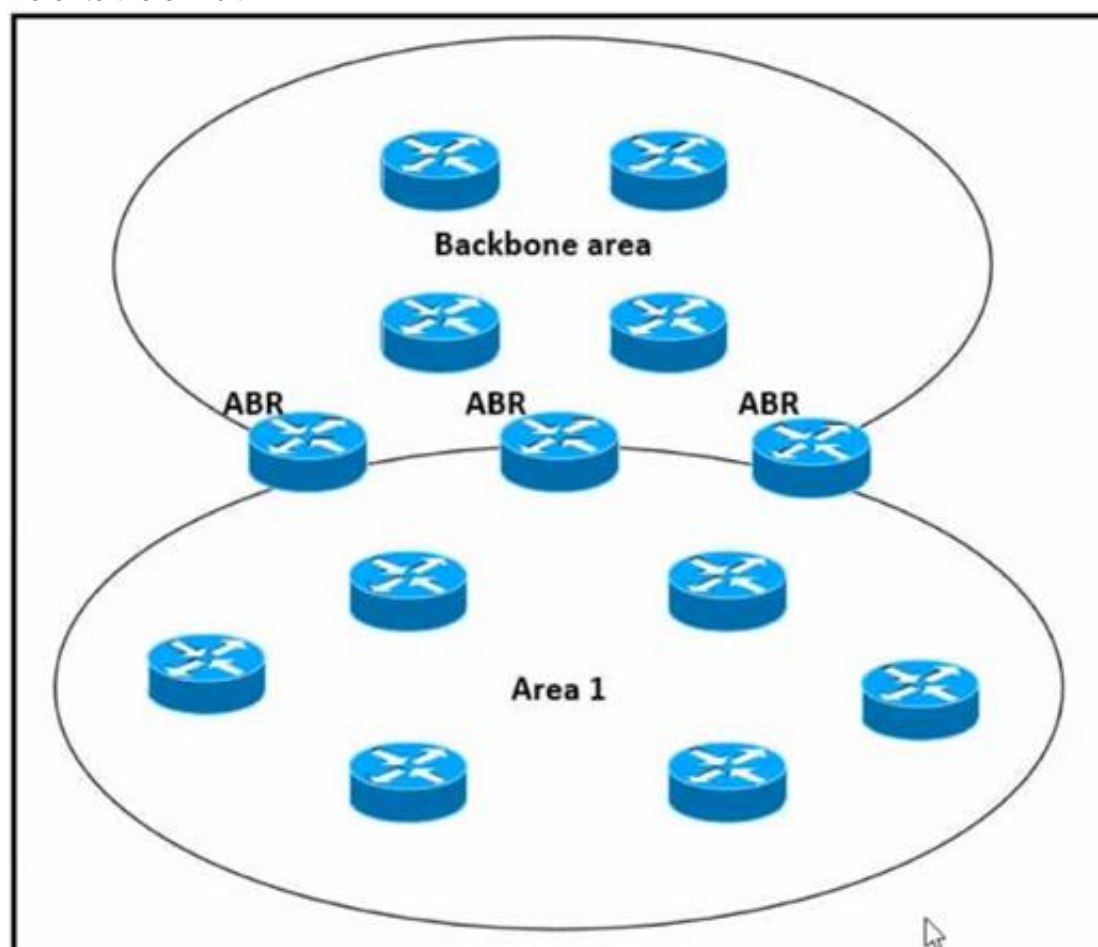
The major business applications of an enterprise are largely monolithic and hard-coded. As part of a major modernization and overhaul of the applications, the goal is to move to a modular and containerized application architecture mode. At the same time, decoupling from the hardware is desired to move to an on-demand provisioning. However, the CyberOps team mandated that the final architecture must provide the same security levels as an air-gapped data center. Which cloud architecture meets these requirements?

- A. IaaS
- B. private cloud
- C. PaaS
- D. hybrid cloud
- E. public cloud

**Answer: B**

#### NEW QUESTION 183

Refer to the exhibit.



Which impact of using three or more ABRs between the backbone area and area 1 is true?

- A. In a large-scale network, LSA replication by all ABRs can cause serious scalability issues.
- B. Multiple ABRs reduce the CPU processing on each ABR due to splitting prefix advertisement.
- C. In a large-scale network, multiple ABRs can create microloops.
- D. Prefixes from the non-backbone area are advertised by one ABR to the backbone.

**Answer: A**

#### NEW QUESTION 184

Company XYZ has implemented policy-based routing in their network. Which potential problem must be kept in mind about network reconvergence and PBR?

- A. It can limit network scalability.
- B. It can create microloops during reconvergence.
- C. It increases convergence time.
- D. It reduces convergence time.

**Answer: B**

#### NEW QUESTION 185

Company XYZ must design a strategy to protect their routers from DoS attacks, such as traffic destined to the router's own route processor, using separate control



plane categories. Which two capabilities can be used to achieve this requirement? (Choose two.)

- A. Control Plane Protection using queue thresholding on the transit subinterface
- B. Control Plane Protection using port filtering on the transit subinterface
- C. Control Plane Protection using port filtering on the main interface
- D. Control Plane Protection using queue thresholding on the host subinterface
- E. Control Plane Protection using port filtering on the host subinterface

**Answer:** DE

#### NEW QUESTION 186

A network engineering team is in the process of designing a lab network for a customer demonstration. The design engineer wants to show that the resiliency of the MPLS traffic Engineering Fast Reroute solution has the same failover/failback times as a traditional SONET/SDH network (around 50MSEC). In order to address both link failure and node failure within the lab typology network, which type of the MPLS TE tunnels must be considered for this demonstration?

- A. TE backup tunnel
- B. Next-hop (NHop) tunnel
- C. FRR Backup tunnel
- D. next-next-hop (NNHop) tunnel

**Answer:** D

#### NEW QUESTION 191

Which function is performed at the access layer of the three-layer hierarchical network design model?

- A. fault isolation
- B. QoS classification and marking boundary
- C. reliability
- D. fast transport
- E. redundancy and load balancing

**Answer:** B

#### NEW QUESTION 196

Company XYZ has a multicast domain that spans across multiple autonomous systems. The company wants to choose a technology that provides simplified and controlled approach to interconnecting the multicast domains. Which technology is the best fit for this purpose?

- A. MSDP
- B. PIM SSM
- C. MPLS
- D. PIM sparse mode

**Answer:** A

#### NEW QUESTION 197

While reviewing an existing network design, you are discussing the characteristics of different STP versions. Which protocol minimizes unicast flooding during a Topology Change Notification in a Layer 2 switched network with many VLANs?

- A. PVRSTP
- B. MST
- C. STP
- D. PVSTP+

**Answer:** A

#### NEW QUESTION 202

What are two common approaches to analyzing and designing networks? (Choose two.)

- A. bottom-up approach
- B. high-low security approach
- C. top-down approach
- D. left-right approach
- E. three-tier approach

**Answer:** AC

#### NEW QUESTION 203

Which tool automates network implementation activities and shortens the implementation lifecycle?

- A. LISP
- B. Java
- C. Conclusion
- D. Python

**Answer:** D

#### NEW QUESTION 204

Company XYZ was not satisfied with the reconvergence time OSPF is taking. BFD was implemented to try to reduce the reconvergence time, but the network is still experiencing delays when having to reconverge. Which technology will improve the design?

- A. OSPF fast hellos
- B. BFD echo
- C. Change the protocol to BGP
- D. Change the OSPF hello and dead intervals

**Answer:** B

#### NEW QUESTION 208

During evaluation of migrating current on premises infrastructure to add cloud-based infrastructure, a network planning team must meet three core requirements as they make recommendations on which cloud strategy to adopt going forward

- Technology is changing rapidly, therefore the enterprise must be open to adopting new ways of doing things, and be ready to invest CapEx-funds in the next three years
- Network bandwidth capacity requirements are dynamic and are expected to change over the next year
- If new technologies are to be introduced, operational expenses must be kept at a minimum.

Which cloud strategy meets these requirements?

- A. private
- B. hybrid
- C. public
- D. multicloud

**Answer:** D

#### NEW QUESTION 210

An architect designs a multi-controller network architecture with these requirements:

- Achieve fast failover to control traffic when controllers fail.
- Reduce connectivity loss and enable smart recovery to improve the SDN survivability.
- Improve connectivity by adding path diversity and capacity awareness for controllers.

Which control plane component of the multi-controller must be built to meet the requirements?

- A. control node reliability
- B. controller state consistency
- C. control path reliability
- D. controller clustering

**Answer:** B

#### NEW QUESTION 211

Which three tools are used for ongoing monitoring and maintenance of a voice and video environment? (Choose three.)

- A. flow-based analysis to measure bandwidth mix of applications and their flows
- B. call management analysis to identify network convergence-related failures
- C. call management analysis to identify CAC failures and call quality issues
- D. active monitoring via synthetic probes to measure loss, latency, and jitter
- E. passive monitoring via synthetic probes to measure loss, latency, and jitter
- F. flow-based analysis with PTP time-stamping to measure loss, latency, and jitter

**Answer:** ACD

#### NEW QUESTION 213

Which action must be taken before new VoIP systems are implemented on a network to ensure that the network is ready to handle the traffic?

- A. Evaluate bandwidth utilization and connection quality
- B. Enable special requirements such as direct DID lines on pickup
- C. Make recommendations to limit the size of the half-open session table on routers
- D. Check if anomaly detection is enabled for SIP and H.323 on Layer 3 devices

**Answer:** B

#### NEW QUESTION 215

Agile and Waterfall are two popular methods for organizing projects. What describes any Agile network design development process?

- A. working design over comprehensive documentation
- B. contract negotiation over customer collaboration
- C. following a plan over responding to change
- D. processes and tools over individuals and interactions over time

**Answer:** A

#### NEW QUESTION 217

Which optimal use of interface dampening on a fast convergence network design is true?

- A. When occasional flaps of long duration occur
- B. when numerous adjacent flaps of very short duration occur
- C. when the router hardware is slower than the carrier delay down detection
- D. when the switch hardware is faster than the debounce timer down detection

Answer: B

NEW QUESTION 218

The network team in XYZ Corp wants to modernize their infrastructure and is evaluating an implementation and migration plan to allow integration MPLS-based, Layer 2 Ethernet services managed by a service provider to connect branches and remote offices. To decrease OpEx and improve response times when network components fail, XYZ Corp decided to acquire and deploy new routers. The network currently is operated over E1 leased lines (2 Mbps) with a managed CE service provided by the telco. Drag and drop the implementation steps from the left onto the corresponding targets on the right in the correct order.

Activation of the MPLS-based L2VPN service.	Step 1
Monitor performance of the Ethernet service for a predefined period of time.	Step 2
Decomission E1 leased line.	Step 3
Deployment of new branch routers.	Step 4
Test and validation of SLA parameters in the L2VPN.	Step 5
Migrate E1 to the new Ethernet service.	Step 6

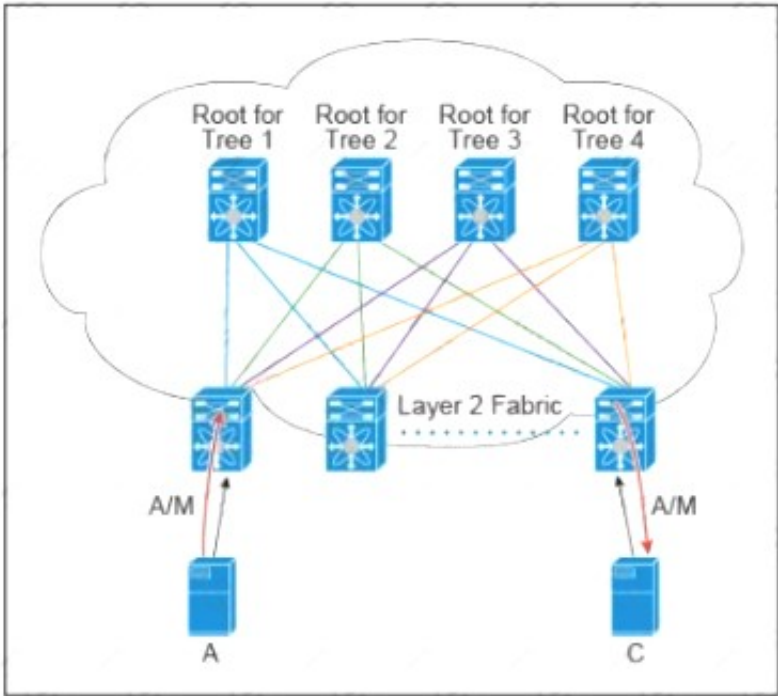
- A. Mastered
- B. Not Mastered

Answer: A

Explanation:  
Table Description automatically generated

NEW QUESTION 221

Refer to the exhibit.



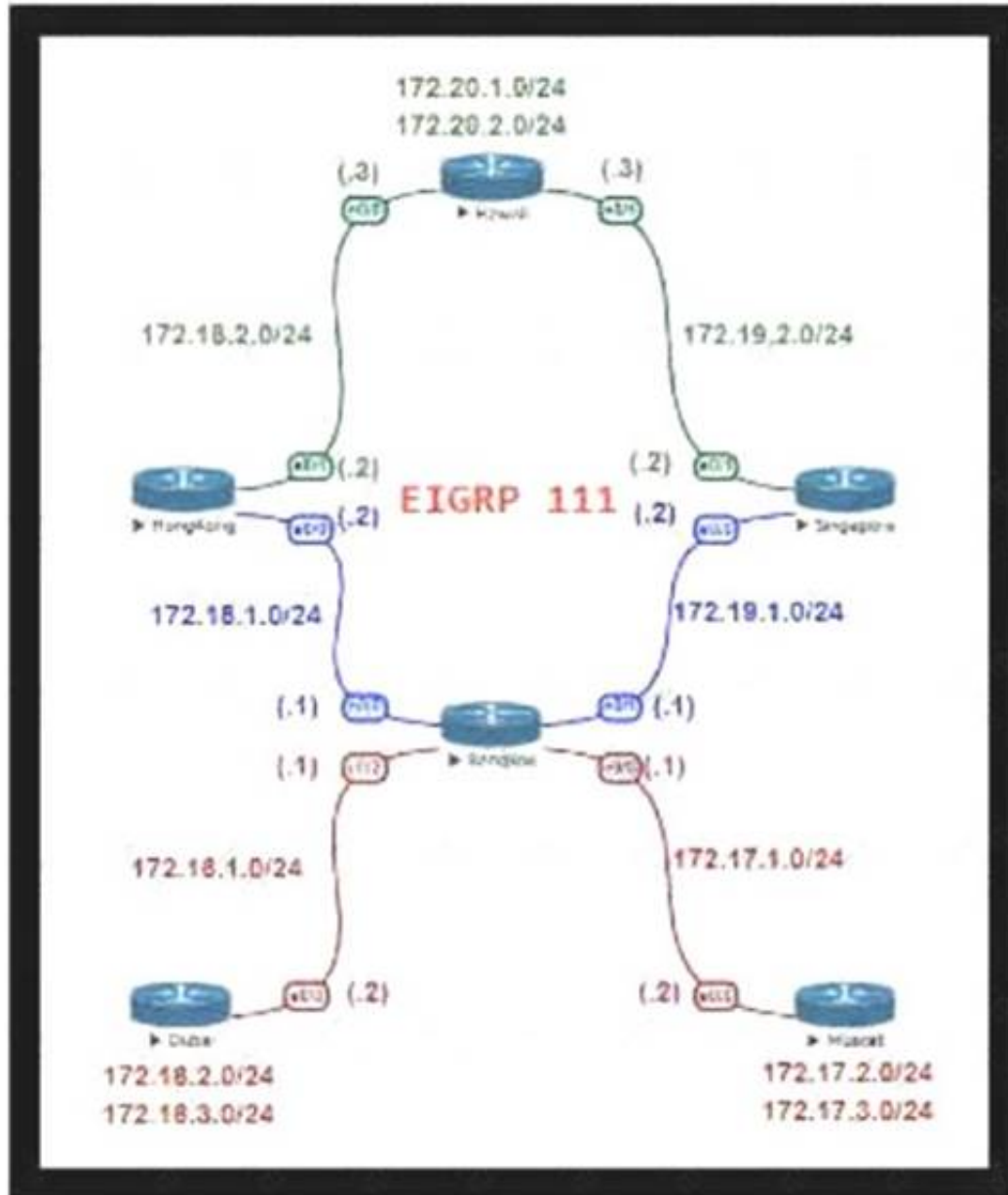
There are multiple trees in the Cisco FabricPath All switches in the Layer 2 fabric share the same view of each tree. Which two concepts describe how the multicast traffic is load-balanced across this topology? (Choose two )

- A. A specific (S,G) traffic is not load-balanced
- B. All trees are utilized at the same level of the traffic rate
- C. Every leaf node assigns the specific (S,G) to the same tree.
- D. A specific (S,G) multicast traffic is load-balanced across all trees due to better link utilization efficiency.
- E. The multicast traffic is generally load-balanced across all trees

Answer: BD

NEW QUESTION 222

Refer to the exhibit.



For Company XYZ Bangkok is using ECMP to reach the 172.20.2.0/24 network. The company wants a design that would allow them to forward traffic from 172.16.2.0/24 toward 172.20.2.0/24 via the Singapore router as the preferred route. The rest of the traffic should continue to use ECMP. Which technology fulfills this design requirement?

- A. policy-based routing
- B. route summarization
- C. unequal-cost load balancing using variance
- D. LFA

Answer: A

#### NEW QUESTION 227

You want to mitigate failures that are caused by STP loops that occur before UDLD detects the failure or that are caused by a device that is no longer sending BPDUs. Which mechanism do you use along with UDLD?

- A. Root guard
- B. BPDU guard
- C. Loop guard
- D. BPDU filtering

Answer: C

#### NEW QUESTION 232

Which two aspects are considered when designing a dual hub dual DMVPN cloud topology? (Choose two)

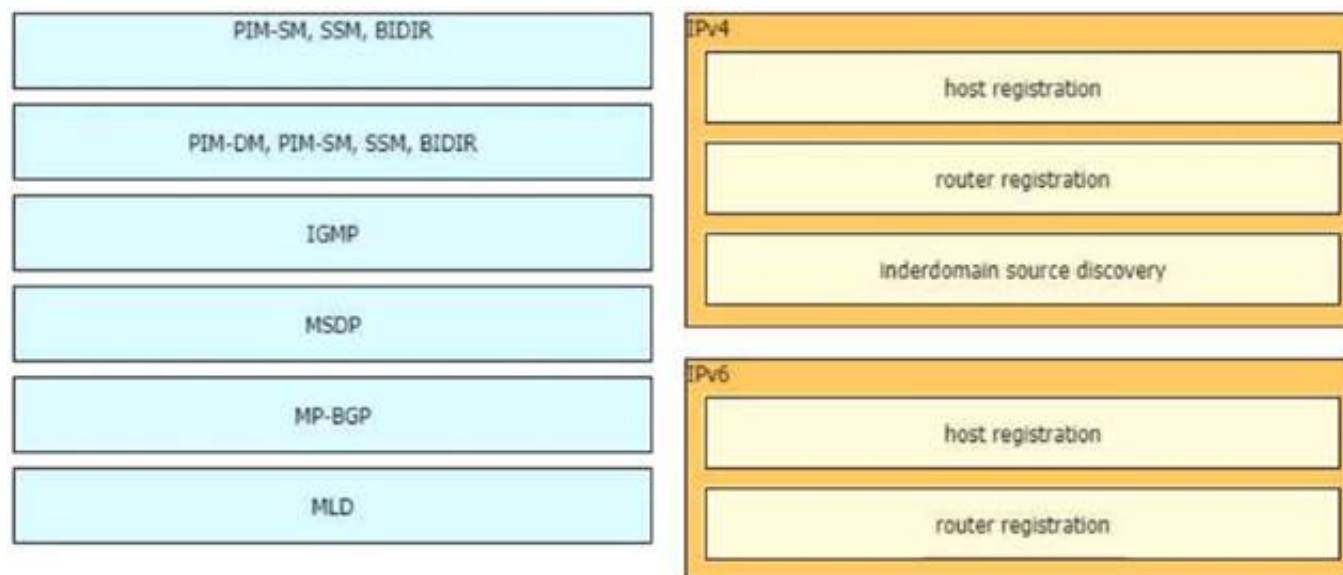
- A. will only work with single-tier headend architecture
- B. hub sites must connect to both DMVPN clouds
- C. recommended for high availability
- D. spoke-to-spoke traffic will transit the hub unless spokes exchange dynamic routing directly
- E. requires all sites to have dual Internet connections

Answer: AC

#### NEW QUESTION 235

Drag and drop the multicast protocols from the left onto the current design situation on the right.





- A. Mastered
- B. Not Mastered

**Answer:** A

**Explanation:**

A picture containing table Description automatically generated

**NEW QUESTION 239**

Which effect of using ingress filtering to prevent spoofed addresses on a network design is true?

- A. It reduces the effectiveness of DDoS attacks when associated with DSCP remarking to Scavenger.
- B. It protects the network Infrastructure against spoofed DDoS attacks.
- C. It Classifies bogus traffic and remarks it with DSCP bulk.
- D. It filters RFC 1918 IP addresses.

**Answer:** B

**NEW QUESTION 240**

You are designing an Out of Band Cisco Network Admission Control. Layer 3 Real-IP Gateway deployment for a customer Which VLAN must be trunked back to the Clean Access Server from the access switch?

- A. authentication VLAN
- B. user VLAN
- C. untrusted VLAN
- D. management VLAN

**Answer:** D

**NEW QUESTION 244**

Which two statements describe the functionality of OSPF packet-pacing timers? (Choose two ) The group-pacing timer controls the interval that is used for group and individual LSA refreshment

- A. OSPF flood-pacing timers allow dynamic control of the OSPF transmission queue size
- B. OSPF retransmission-pacing timers allow control of interpacket spacing between consecutive link-state update packets in the OSPF retransmission queue.
- C. OSPF retransmission-pacing timers allow control of packet interleaving between nonconsecutive link-state update packets in the OSPF retransmission queue.
- D. OSPF flood-pacing timers allow control of interpacket spacing between consecutive link-state update packets in the OSPF transmission queue

**Answer:** BD

**NEW QUESTION 246**

You are designing a network running both IPv4 and IPv6 to deploy QoS Which consideration is correct about the QoS for IPv4 and IPv6?

- A. IPv4 and IPv6 traffic types can use queuing mechanisms such as LLQ, PQ and CQ.
- B. IPv6 packet classification is only available with process switching, whereas IPv4 packet classification is available with both process switching and CEF.
- C. IPv6 and IPv4 traffic types can use a single QoS policy to match both protocols
- D. Different congestion management mechanisms need to be used for IPv4 and IPv6 traffic types

**Answer:** C

**NEW QUESTION 250**

Which two actions must merchants do to be compliant with the Payment Card Industry Data Security Standard? (Choose two.)

- A. conduct risk analyses
- B. install firewalls
- C. use antivirus software
- D. establish monitoring policies
- E. establish risk management policies

**Answer:** BC

#### NEW QUESTION 252

An enterprise campus is adopting a network virtualization design solution with these requirements

- It must include the ability to virtualize the data plane and control plane by using VLANs and VRFs
- It must maintain end-to-end logical path transport separation across the network
- resources available grouped at the access edge

Which two primary models can this network virtualization design be categorized? (Choose two)

- A. Path isolation
- B. Session isolation
- C. Group virtualization
- D. Services virtualization
- E. Edge isolation

**Answer:** AD

#### NEW QUESTION 253

How many fully established neighbour relationships exist on an Ethernet with five routers running OSPF as network type broadcast?

- A. 5
- B. 6
- C. 7
- D. 10
- E. 20

**Answer:** C

#### Explanation:

Assuming routers R1-R5, R1 is elected DR, R2 BDR. Fully established neighborships only occur to DR and BDR, all other neighbors are in 2Way DR other state.

DR|BDRFull relationships:

R2-R1 R3-R1 R3-R2 R4-R1 R4-R2 R5-R1 R5-R2

#### NEW QUESTION 257

What is a description of a control plane action?

- A. de-encapsulating and re-encapsulating a packet in a data-link frame
- B. matching the destination MAC address of an Ethernet frame to the MAC address table
- C. matching the destination IP address of an IP packet to the IP routing table
- D. hosts locating routers that reside on attached links using the IPv6 Neighbor Discover Protocol

**Answer:** D

#### NEW QUESTION 260

A Tier-3 Service Provider is evolving into a Tier-2 Service Provider due to the amount of Enterprise business it is receiving The network engineers are re-evaluating their IP/MPLS design considerations in order to support duplicate/overlapping IP addressing from their Enterprise customers within each Layer3 VPN. Which concept would need to be reviewed to ensure stability in their network?

- A. Assigning unique Route Distinguishers
- B. Assigning unique Route Target ID'S
- C. Assigning unique IP address space for the Enterprise NAT/Firewalls
- D. Assigning unique VRF ID's to each L3VPN

**Answer:** A

#### NEW QUESTION 261

Identity and access management between multiple users and multiple applications has become a mandatory requirement for Company XYZ to fight against ever increasing cybersecurity threats. To achieve this, federated identity services have been deployed in the Company XYZ network to provide single sign-on and Multi-Factor Authentication for the applications and services. Which protocol can be used by Company XYZ to provide authentication and authorization services?

- A. OAuth2
- B. OpenID Connect
- C. OpenID
- D. SAML2.0

**Answer:** D

#### NEW QUESTION 266

SDWAN networks capitalize the usage of broadband Internet links over traditional MPLS links to offer more cost benefits to enterprise customers. However, due to the insecure nature of the public Internet, it is mandatory to use encryption of traffic between any two SDWAN edge devices installed behind NAT gateways. Which overlay method can provide optimal transport over unreliable underlay networks that are behind NAT gateways?

- A. TLS
- B. DTLS
- C. IPsec
- D. GRE

Answer: C

#### NEW QUESTION 267

Company XYZ is redesigning their QoS policy. Some of the applications used by the company are real-time applications. The QoS design must give these applications preference in terms of transmission. Which QoS strategy can be used to fulfill the requirement?

- A. weighted fair queuing
- B. weighted random early detection
- C. low-latency queuing
- D. first-in first-out

Answer: C

#### NEW QUESTION 271

Company XYZ runs OSPF in their network. A design engineer decides to implement hot-potato routing architecture. How can this implementation be achieved?

- A. Enable iBGP and apply prepend to ensure all prefixes will have the same length of the AS path attribute value.
- B. Redistribute the external prefixes onto OSPF and ensure the total metric calculation includes only the ext value and the value is the same in all ASBRs.
- C. Enable OSPF load-balancing over unequal cost path.
- D. Redistribute the external prefixes onto OSPF and ensure that the total metric calculation includes external internal values.

Answer: D

#### NEW QUESTION 276

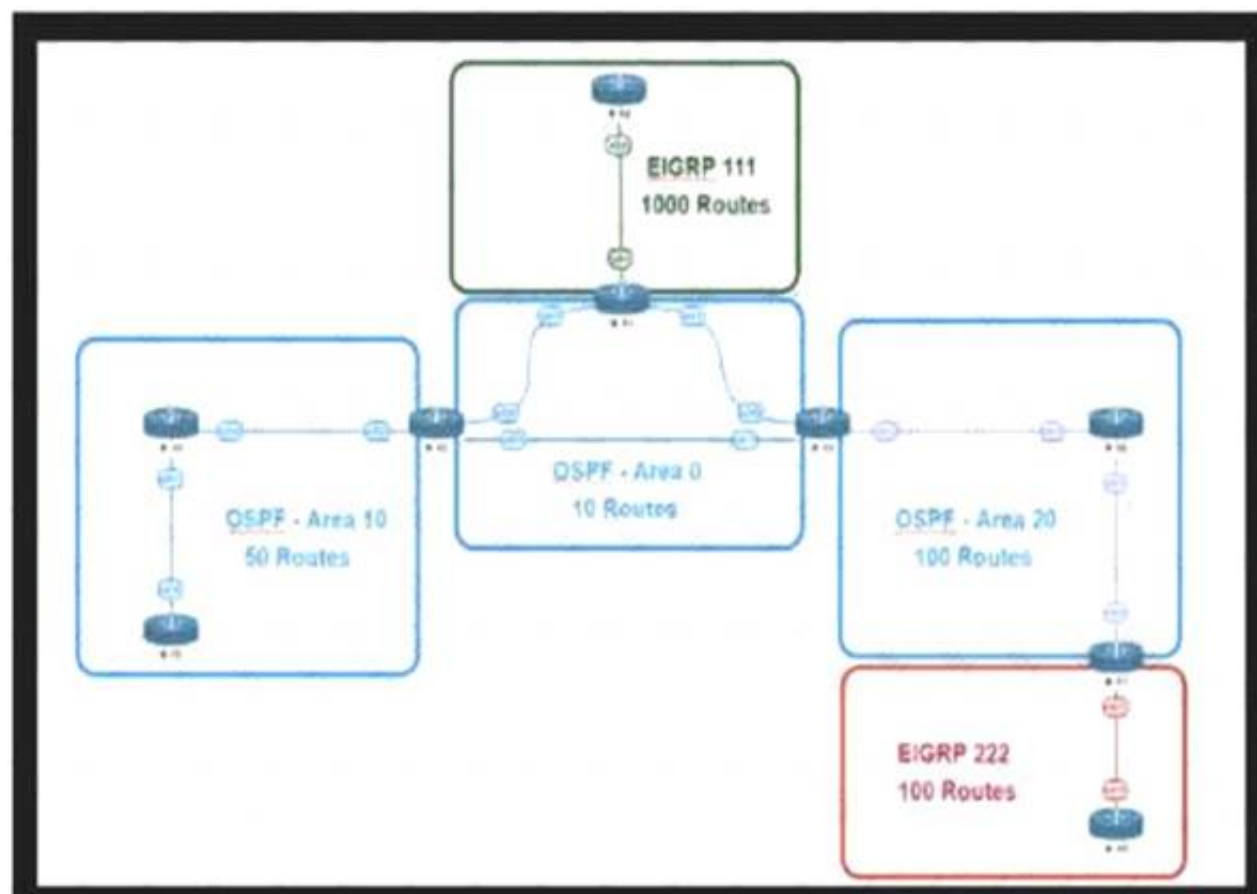
You are tasked to design a QoS policy for a service provider so they can include it in the design of their MPLS core network. If the design must support an MPLS network with six classes, and CEs will be managed by the service provider, which QoS policy should be recommended?

- A. map IP CoS bits into the IP Precedence field
- B. map flow-label bits into the Exp field
- C. map IP precedence bits into the DSCP field
- D. map DSCP bits into the Exp field

Answer: D

#### NEW QUESTION 279

Refer to the exhibit.



This network is running OSPF and EIGRP as the routing protocols. Mutual redistribution of the routing protocols has been configured on the appropriate ASBRs. The OSPF network must be designed so that flapping routes in EIGRP domains do not affect the SPF runs within OSPF. The design solution must not affect the way EIGRP routes are propagated into the EIGRP domains. Which technique accomplishes the requirement?

- A. route summarization on the ASBR interfaces facing the OSPF domain
- B. route summarization on the appropriate ASBRs.
- C. route summarization on the appropriate ASBRs.
- D. route summarization on EIGRP routers connecting toward the ASBR

Answer: B

#### NEW QUESTION 282

If the desire is to connect virtual network functions together to accommodate different types of network service connectivity, what must be deployed?

- A. bridging
- B. service chaining

- C. linking
- D. daisy chaining
- E. switching

**Answer:** B

**Explanation:**

Service chaining is the technique of connecting virtual network functions together to provide different types of network service connectivity. Service chaining uses software-defined networking (SDN) programmability to create a chain of connected network services, such as firewalls, load balancers, NAT, and intrusion protection. Service chaining can automate the provisioning of network applications that have different characteristics and requirements, such as security, latency, or quality of service (QoS). Service chaining can also optimize the use of network resources and improve application performance by using SDN analytics and performance tools to select the best available network paths and avoid network congestion. Service chaining is being used in many SDN and network functions virtualization (NFV) use cases and deployments, such as data centers, carrier networks, and virtual customer edge123. References:

- 1: What is Network Service Chaining or Service Function Chaining - SDxCentral
- 2: On service chaining using Virtual Network Functions in Network-enabled Cloud systems | IEEE Conference Publication | IEEE Xplore
- 3: Service function chaining - Gini5

**NEW QUESTION 287**

A small organization of 20 employees is looking to deliver a network design service for modernizing customer networks to support advanced solutions.

- Project scope and weekly progress should be visualized by the management.
- Always consider feedback and make changes accordingly during the project.
- Should consider flexibility to change scope at the point of time.

Which project methodology meets the requirements and have the least impact on the outcome?

- A. Scrum
- B. LEAN
- C. Kanban
- D. Six-Sigma

**Answer:** A

**Explanation:**

<https://firebrand.training/uk/blog/scrum-vs-six-sigma-which-one-is-right-for-you>

**NEW QUESTION 288**

Which two types of planning approaches are used to develop business-driven network designs and to facilitate the design decisions? (Choose two)

- A. cost optimization approach
- B. strategic planning approach
- C. modular approach
- D. tactical planning approach
- E. business optimization approach

**Answer:** BD

**NEW QUESTION 290**

You are tasked with the design of a high available network. Which two features provide fail closed environments? (Choose two.)

- A. EIGRP
- B. RPVST+
- C. MST
- D. L2MP

**Answer:** AB

**NEW QUESTION 291**

.....



## Thank You for Trying Our Product

### We offer two products:

1st - We have Practice Tests Software with Actual Exam Questions

2nd - Questons and Answers in PDF Format

### 400-007 Practice Exam Features:

- \* 400-007 Questions and Answers Updated Frequently
- \* 400-007 Practice Questions Verified by Expert Senior Certified Staff
- \* 400-007 Most Realistic Questions that Guarantee you a Pass on Your FirstTry
- \* 400-007 Practice Test Questions in Multiple Choice Formats and Updatesfor 1 Year

**100% Actual & Verified — Instant Download, Please Click**  
**[Order The 400-007 Practice Test Here](#)**