

## Exam Questions 350-501

Implementing and Operating Cisco Service Provider Network Core Technologies

<https://www.2passeasy.com/dumps/350-501/>



#### NEW QUESTION 1



Refer to the exhibit. P3 and PE4 are at the edge of the service provider core and serve as ABR routers. Aggregation areas are on either side of the core. Which statement about the architecture is true?

- A. To support seamless MPLS, the BGP route reflector feature must be disabled.
- B. If each area is running its own IGP, BGP must provide an end-to-end MPLS LSP.
- C. If each area is running its own IGP, the ABR routers must redistribute the IGP routing table into BGP.
- D. To support seamless MPLS, TDP must be used as the label protocol.

**Answer: B**

#### NEW QUESTION 2

Which component is similar to an EVPN instance?

- A. router distinguisher
- B. MPLS label
- C. IGP router ID
- D. VRF

**Answer: D**

#### NEW QUESTION 3

Why do Cisco MPLS TE tunnels require a link-state routing protocol?

- A. The link-state database provides segmentation by area, which improves the path-selection process.
- B. The link-state database provides a data repository from which the tunnel endpoints can dynamically select a source ID.
- C. Link-state routing protocols use SPF calculations that the tunnel endpoints leverage to implement the tunnel.
- D. The tunnel endpoints use the link-state database to evaluate the entire topology and determine the best path.

**Answer: D**

#### NEW QUESTION 4

You are configuring MPLS traffic-engineering tunnels in the core. Which two ways exist for the tunnel path across the core? (Choose two.)

- A. The dynamic path option is supported only with IS-IS.
- B. Tunnels can be configured with dynamic path or explicitly defined path.
- C. A zero bandwidth tunnel is not a valid option.
- D. The bandwidth statement creates a "hard" reservation on the link.
- E. Tunnel links inherit IGP metrics by default unless overridden.

**Answer: BE**

#### NEW QUESTION 5

While implementing TTL security, you issue the PE(config-router-af)#neighbor 2.2.2.2 ttl-security hops 2 command. After you issue this command, which BGP packets does the PE accept?

- A. to 2.2.2.2, with a TTL of 2 or more
- B. from 2.2.2.2, with a TTL of less than 2
- C. to 2.2.2.2, with a TTL of less than 253
- D. from 2.2.2.2, with a TTL of 253 or more

**Answer: D**

#### NEW QUESTION 6

```
Router 1:

ip route 192.168.1.0 255.255.255.0 null 0 tag 1

route-map ddos
  match tag 1
  set local preference 150
  set community no export

route-map ddos permit 20

router bgp 65513
  redistribute static route-map ddos

Router 2:

Interface gigabitethernet0/1
  ip verify unicast reverse-path
```

Refer to the exhibit. An engineer is preparing to implement data plane security configuration. Which statement about this configuration is true?

- A. Router 2 is the router receiving the DDoS attack.
- B. Router 1 must be configured with uRPF for the RTBH implementation to be effective.
- C. Router 1 is the trigger router in a RTBH implementation.
- D. Router 2 must configure a route to null 0 for network 192.168.1.0/24 for the RTBH implementation to be complete.

**Answer:** A

#### NEW QUESTION 7

You are creating new Cisco MPLS TE tunnels. Which type of RSVP message does the headend router send to reserve bandwidth on the path to the tailend router?

- A. path
- B. tear
- C. error
- D. reservation

**Answer:** A

#### NEW QUESTION 8

Which configuration enables BGP FlowSpec client function and installation of policies on all local interfaces?

- A. flowspec address- family ipv4 local-install interface-all
- B. flowspec address- family ipv4 install interface-all local
- C. flowspec address- family ipv4 install interface-all
- D. flowspec address- family ipv4 local-install all-interface

**Answer:** A

#### NEW QUESTION 9

An engineer working for telecommunication company needs to secure the LAN network using a prefix list. Which best practice should the engineer follow when he implements a prefix list?

- A. An engineer must identify the prefix list with a number only.
- B. The final entry in a prefix list must be /32.
- C. An engineer must include only the prefixes for which he needs to log activity.
- D. An engineer must use nonsequential sequence numbers in the prefix list so that he can insert additional entries later.

**Answer:** D

#### NEW QUESTION 10

Refer to the exhibit. Which effect of this configuration is true?

- A. It enables MPLS on the interface.
- B. It creates a pseudowire class named cisco.
- C. It enables ATOM on interface gigabitethernet1/0.
- D. It enables tagging for VLAN 12 on the interface.

**Answer:** C

#### NEW QUESTION 10

A network engineer must enable the helper router to terminate the OSPF graceful restart process if it detects any changes in the LSA. Which command enables this feature?

- A. nsf ietf helper disable
- B. nsf cisco helper disable
- C. nsf ietf helper strict-lsa-checking
- D. nsf cisco enforce global

Answer: A

#### NEW QUESTION 11

```
R1
router bgp 65000
router-id 192.168.1.1
neighbor 192.168.1.2 remote-as 65012
neighbor 192.168.1.2 local-as 65112
```

Refer to the exhibit. A network engineer is implementing a BGP protocol. Which effect of the local-as keyword in this configuration is true?

- A. It enables peer 192.168.1.2 to establish a BGP relationship with R1 using AS 65012 without additional configuration.
- B. It enables peer 192.168.1.2 to establish a BGP relationship with R1 using AS 65112 and the VPNv4 address family.
- C. It enables peer 192.168.1.2 to establish a BGP relationship with R1 using AS 65012 and the VPNv4 address family.
- D. It enables peer 192.168.1.2 to establish a BGP relationship with R1 using AS 65112 without additional configuration.

Answer: D

#### NEW QUESTION 14

```
RP/0/0/CPU0:router# show bgp neighbors 192.168.2.2

BGP neighbor is 192.168.2.2, remote AS 1, local AS 140, external link
Remote router ID 0.0.0.0
BGP state = Idle
Last read 00:00:00, hold time is 180, keepalive interval is 60 seconds
Received 0 messages, 0 notifications, 0 in queue
Sent 0 messages, 0 notifications, 0 in queue
Minimum time between advertisement runs is 15 seconds

For Address Family: IPv4 Unicast
BGP neighbor version 0
Update group: 0.1
eBGP neighbor with inbound or outbound policy; defaults to 'drop'
Route refresh request: received 0, sent 0
0 accepted prefixes
Prefix advertised 0, suppressed 0, withdrawn 0, maximum limit 524288
Threshold for warning message 75%

Connections established 0; dropped 0
Last reset 00:02:03, due to BGP neighbor initialized
External BGP neighbor not directly connected.
```

Refer to the exhibit. Based on the show command output, which result is true after BGP session is established?

- A. The IOS XR router advertises and accepts all routes to and from eBGP neighbor 192.168.2.2.
- B. The IOS XR router advertises all routes to the neighbor 192.168.2.2, but it does not accept any routes from 192.168.2.2.
- C. No routes are accepted from the neighbor 192.168.2.2, nor are any routes advertised to it.
- D. The IOS XR router does not advertise any routes to the neighbor 192.168.2.2, but it accepts any routes from 192.168.2.2.

Answer: C

#### NEW QUESTION 17

```
R1
router ospf 1
area 2 stub no-summary

R2
router ospf 1
area 3 nssa
```

Refer to the exhibit. In which way does router R1 operate differently than router R2?

- A. R1 sends LSA types 5 and 7, while R2 sends type 1, 2, and 7 LSAs.
- B. R1 sends LSA type 2 only, while R2 sends type 1 and type 7 LSAs.
- C. R1 sends LSA type 2 only and R2 sends LSA type 1 only.
- D. R1 sends LSA types 1 and 2, while R2 sends type 1, 2, and 7 LSAs.

Answer: D

#### NEW QUESTION 18

```
router ospf 1
nsf ietf restart interval 90
```

Refer to the exhibit. Which purpose of implementing NSF with this configuration is true?

- A. The router uses NSF to handle RP switchover while allowing neighbor relationships to remain up.
- B. The router uses NSF to reduce neighbor-relationship downtime during RP switchover.
- C. The router uses NSF to load balance traffic on a routed EtherChannel.
- D. The router uses NSF to load balance traffic between two links, with the primary link alternating every 90 seconds.

**Answer:** A

#### NEW QUESTION 21

Which task must be performed first to implement BFD in an IS-IS environment?

- A. Configure BFD in an interface configuration mode.
- B. Disable Cisco Express Forwarding on all interfaces running routing protocols other than IS-IS.
- C. Configure all IS-IS routers as Level 2 devices.
- D. Configure BFD under the IS-IS process.

**Answer:** D

#### NEW QUESTION 22

Which two IS-IS parameters must match before two Level 2 peers can form an adjacency? (Choose two.)

- A. hello timer setting
- B. authentication settings
- C. area ID
- D. system ID
- E. MTU

**Answer:** BE

#### NEW QUESTION 24

Which three OSPF parameters must match before two devices can establish an OSPF adjacency? (Choose three.)

- A. IP address
- B. subnet mask
- C. interface cost
- D. process ID
- E. area number
- F. hello timer setting

**Answer:** BEF

#### NEW QUESTION 29

```
R1
router isis
net 52.0011.0000.0000.0001.00
is-type level-2

interface gigabitethernet0/1
ip address 192.168.0.1 255.255.255.0
ip router isis

R2
router isis
net 52.0022.0000.0000.0002.00
is-type level-1

interface gigabitethernet0/1
ip address 192.168.0.2 255.255.255.0
ip router isis
```

Refer to the exhibit. Which statement about the status of the neighbor relationship between R1 and R2 is true?

- A. The neighbor relationship is down because the two routers are configured with different area types.
- B. The neighbor relationship is down because the two routers are in the same subnet.
- C. The neighbor relationship is up because R2 is level 1 and level 2 router.
- D. The neighbor relationship is down because R2 is operating as a Level 1 router and the two routers are in different areas.

**Answer:** A

#### NEW QUESTION 30

Which two tasks must you perform when you implement LDP NSF on your network? (Choose two.)

- A. Enable NSF for BGP.
- B. Implement direct connections for LDP peers.



- C. Enable NSF for EIGRP.
- D. Disable Cisco Express Forwarding.
- E. Enable NSF for the link-state routing protocol that is in use on the network.

Answer: BE

#### NEW QUESTION 35

```
R2#sh cins neighbors detail
Tag TEST:
System Id   Interface   SNPA        State Holdtime   Type Protocol
R1          Fa0/0       ca01.2178.0008 Up    89           L1L2 IS-IS
Area Address(es): 49
Uptime: 00:03:29
NSF capable
Interface name: FastEthernet0/0
```

Refer to the exhibit. On R1, which output does the show isis neighbors command generate?

- A. Tag TEST:  

System Id	Type	Interface	IP Address	State	Holdtime	Circuit Id
R2	L1	Fa0/0	UP 7			R2.01
R2	L2	Fa0/0	UP 9			R2.01
- B. Tag TEST:  

System Id	Type	Interface	IP Address	State	Holdtime	Circuit Id
R2	L2	Fa0/0	UP 7			R2.01
R2	L2	Fa0/0	UP 9			R2.01
- C. Tag TEST:  

System Id	Type	Interface	IP Address	State	Holdtime	Circuit Id
R2	L2	Fa0/0	UP 9			R2.01
- D. Tag TEST:  

System Id	Type	Interface	IP Address	State	Holdtime	Circuit Id
R2	L1	Fa0/0	UP 7			R2.01

Answer: A

#### NEW QUESTION 37

```
R1

router bgp 65000
 router-id 192.268.1.1
 neighbor 192.168.1.2 remote-as 65001
 neighbor 192.168.1.2 password cisco
```

Refer to the exhibit Router R1 and its peer R2 reside on the same subnet in the network. If an engineer implements this configuration to R1, how does it make connections to R2?

- A. R1 establishes TCP connections that are authenticated with a clear-text password.
- B. R1 establishes UDP connections that are authenticated with an MD5 password.
- C. R1 establishes UDP connections that are authenticated with a clear-text password.
- D. R1 establishes TCP connections that are authenticated with an MD5 password.

Answer: D

#### NEW QUESTION 38

```
"*Apr 30 14:33:43.619: %CLNS-4-AUTH_FAIL: ISIS: LAN IIH authentication failed".
```

```
R1#show isis neighbors
Tag TEST:
System Id   Type Interface   IP Address   State Holdtime Circuit Id
R2          L2             Fa0/0        UP    9           R2.01

R2#show isis neighbors
Tag TEST:
System Id   Type Interface   IP Address   State Holdtime Circuit Id
R2          L1             Fa0/0        INIT  22          R2.01
R2          L2             Fa0/0        UP    24          R2.01
```

Refer to the exhibits. R1 and R2 are directly connected and IS-IS routing has been enabled between R1 and R2. R1 generates the above log message periodically. Based on this output, which statement is true?

- A. IS-IS neighbor authentication is failing for Level 2 PDUs only.
- B. IS-IS neighbor authentication is failing for Level 2 first and then for Level 1 PDUs.
- C. IS-IS neighbor authentication is failing for Level 1 and Level 2 PDUs.
- D. IS-IS neighbor authentication is failing for Level 1 PDUs only.

**Answer: D**

#### NEW QUESTION 43

```
PE-A#config t
PE-A(config)#interface FastEthernet0/0
PE-A(config-if)#ip ospf message-digest-key 1 md5 44578611
PE-A(config-if)#ip ospf authentication message-digest

PE-B#config t
PE-B(config)#interface FastEthernet0/0
```

Refer to the exhibit. An engineer wants to authenticate the OSPF neighbor between PE-A and PE-B using MD5. Which command on PE-B successfully completes the configuration?

- A. PE-B(config-if)#ip ospf message-digest-key 1 md5 44578611 PE-B(config-if)#ip ospf authentication null
- B. PE-B(config-if)#ip ospf message-digest-key 1 md5 44578611 PE-B(config-if)#ip ospf authentication key-chain 44578611
- C. PE-B(config-if)#ip ospf message-digest-key 1 md5 44568611 PE-B(config-if)#ip ospf authentication null
- D. PE-B(config-if)#ip ospf message-digest-key 1 md5 44578611 PE-B(config-if)#ip ospf authentication message-digest

**Answer: D**

#### NEW QUESTION 48

```
interface gigabitethernet1/0/1
switchport mode access
switchport access vlan 5
channel-group 1 mode desirable
```

Refer to the exhibit. An engineer is preparing to implement link aggregation configuration. Which statement about this configuration is true?

- A. The switch port negotiates an EtherChannel if it receives LACP packets from a connected peer running passive mode.
- B. The switch port actively sends packets to negotiate an EtherChannel using PAgP.
- C. The switch port passively negotiates an EtherChannel if it receives PAgP packets from a connected peer.
- D. The switch port accepts LACP and PAgP packets from a connected peer and negotiate an EtherChannel using the common EtherChannel mode.

**Answer: B**

#### NEW QUESTION 53

You are writing an RPL script to accept routes only from certain autonomous systems. Consider this code:

```
RP/0/RP0/CPU0:router(config-rpl)# if as-path in (ios-regex '.*77$') RP/0/RP0/CPU0:router(config-rpl-if)# pass RP/0/RP0/CPU0:router(config-rpl-if)# endif
```

If you apply this code to BGP filters, which effect does the code have on your router?

- A. denies routes from AS 7070
- B. allows routes from AS 7077
- C. denies routes from AS 7007
- D. allows routes from AS 770

**Answer: B**

#### NEW QUESTION 58

Which regular expression query modifier function indicates the start of a string?

- A. +
- B. ^
- C. \$
- D. [^]

**Answer: B**

#### NEW QUESTION 60

Which utility can you use to locate MPLS faults?

- A. MPLS LSP ping
- B. QoS
- C. MPLS traceroute
- D. EEM

**Answer: C**

#### NEW QUESTION 61

Which statement about segment routing prefix segments is true?

- A. It is the longest path to a node.
- B. It is linked to an adjacency SID that is globally unique within the router.
- C. It is linked to a prefix SID that is globally unique within segment routing domain.
- D. It requires using EIGRP to operate.

Answer: C

#### NEW QUESTION 66

```
RP/0/RSP0/CPU0:JFK-PE#show mpls ldp bindings 192.168.10.10/32
Fri Nov 11 21:02:33.124 UTC
192.168.10.10/32, rev 2
  Local bindings: label: ImpNull
  Remote bindings: (2 peers)
      Peer                Label
      -----
      10.10.10.2:0         562656
      10.10.10.5:0         378337
```

Refer to the exhibit. After implementing a new design for the network, a technician reviews the pictures CLI output as part of the MOP. Which two elements describe what the technician can ascertain from the ImpNull output? (Choose two.)

- A. Ultimate Hop Popping is in use for the prefix displayed.
- B. Penultimate Hop Popping is in use for the prefix displayed.
- C. Label 0 is used for the prefix displayed, but will not be part of the MPLS label stack for packets destined for 192.168.10.10.
- D. Label 3 is in use for the prefix displayed and will be part of the MPLS label stack for packets destined for 192.168.10.10.
- E. Label 0 is used for the prefix displayed and will be part of the MPLS label stack for packets destined for 192.168.10.10.

Answer: BE

#### NEW QUESTION 70

```
route-policy ciscotest
  if destination in acl10 then
    pass
  else
    set local-preference 300
  endif
end-policy end
```

Refer to the exhibit. A network engineer is implementing a BGP routing policy. Which effect of this configuration is true?

- A. All traffic that matches acl10 is allowed without any change to its local-preference.
- B. All traffic that matches acl10 is dropped without any change to its local-preference.
- C. If traffic matches acl10, it is allowed and its local-preference is set to 300.
- D. All traffic is assigned a local-preference of 300 regardless of its destination.

Answer: A

#### NEW QUESTION 71

```
class-map match-any class1
match-protocol ipv4
match qos-group 4
```

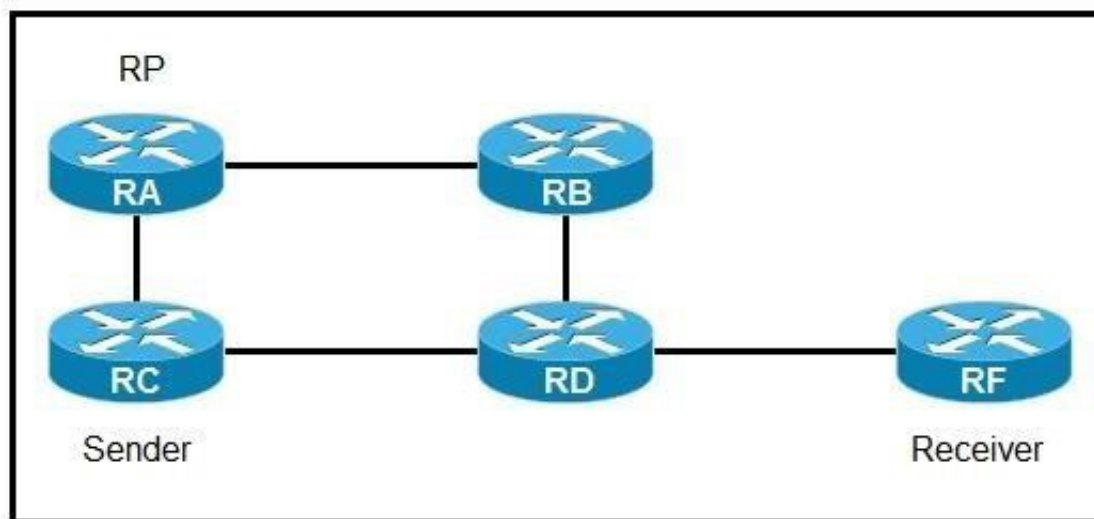
Refer to the exhibit. A network engineer is implementing QoS services. Which two statements about the qos-group keyword on Cisco IOS XR are true? (Choose two.)

- A. It marks packets for end-to-end QoS policy enforcement across the network.
- B. QoS group marking occurs on the ingress.
- C. The QoS group numbering corresponds to priority level.
- D. QoS group can be used in fabric QoS policy as match criteria.
- E. It cannot be used with priority traffic class.

Answer: BD

#### NEW QUESTION 74





Refer to the exhibit. If router A is the RP, which PIM mode can you configure so that devices will send multicast traffic toward the RP?

- A. PIM-SM
- B. BIDIR-PIM
- C. PIM-SSM
- D. PIM-DM

**Answer:** A

#### NEW QUESTION 79

```
snmp-server community ciscotest ro 2
```

Refer to the exhibit. What is significant about the number 2 in the configuration?

- A. It indicates two SNMP managers can read and write with the agent using community string ciscotest.
- B. It dictates the number of sessions that can be open with the SNMP manager.
- C. It is the numeric name of the ACL that contains the list of SNMP managers with access to the agent.
- D. It represents the version of SNMP running.

**Answer:** C

#### NEW QUESTION 82

Which service is a VNF role?

- A. Network
- B. Firewall
- C. Storage
- D. Compute

**Answer:** A

#### NEW QUESTION 85

What do Ansible and SaltStack have in common?

- A. They both have agents running on the client machine.
- B. They both can be designed with more than one master server.
- C. They both use DSL configuration language.
- D. They both use YAML configuration language.

**Answer:** D

#### NEW QUESTION 86

```
<data>
<rpc-reply>
```

Refer to the exhibit. This output is included at the end of an output that was provided by a device using NETCONF. What does the code show?

- A. It shows that the full configuration is being modeled by YANG.
- B. It shows NETCONF uses remote procedure calls.
- C. It shows the hostname of the device as rpc-reply.
- D. It shows that the running configuration is blank.

**Answer:** B

#### NEW QUESTION 88

Which statement about Network Services Orchestrator (NSO) is true?

- A. It must use SDN as an overlay for addressing.
- B. It uses YANG modeling language to automate devices.
- C. It is used only in service provider environments.

D. It can be used only with XML coding.

**Answer:** B

**NEW QUESTION 91**

Refer to the exhibit. Which statement describes this configuration?

- A. Router 1 has a new data store to collect SNMP information, but configuration must still be done at the CLI only.
- B. Router 1 can be remotely managed by the CLI using Telnet.
- C. Router 1 has its running configuration locked so changes can be made only when the administrator issues a kill session.
- D. Router 1 has a temporary data store where a copy of the running configuration can be manipulated and verified before committing the configuration.

**Answer:** D

**NEW QUESTION 96**

.....

## THANKS FOR TRYING THE DEMO OF OUR PRODUCT

Visit Our Site to Purchase the Full Set of Actual 350-501 Exam Questions With Answers.

We Also Provide Practice Exam Software That Simulates Real Exam Environment And Has Many Self-Assessment Features. Order the 350-501 Product From:

<https://www.2passeasy.com/dumps/350-501/>

## Money Back Guarantee

### 350-501 Practice Exam Features:

- \* 350-501 Questions and Answers Updated Frequently
- \* 350-501 Practice Questions Verified by Expert Senior Certified Staff
- \* 350-501 Most Realistic Questions that Guarantee you a Pass on Your FirstTry
- \* 350-501 Practice Test Questions in Multiple Choice Formats and Updatesfor 1 Year