

Exam Questions MS-721

Collaboration Communications Systems Engineer

<https://www.2passeasy.com/dumps/MS-721/>



Graphical user interface, text, application, chat or text message Description automatically generated

Reference:

<https://docs.microsoft.com/en-us/microsoftteams/manage-emergency-calling-policies>

NEW QUESTION 3

- (Exam Topic 1)

You need to connect the analog intercoms to Teams Phone.

Which two actions should you perform? Each correct answer presents part of the solution. NOTE: Each correct selection is worth one point.

- A. Create a trusted application endpoint for Teams.
- B. Create a resource account for each intercom.
- C. Register the ATAs with a Teams-certified SBC.
- D. Create a configuration profile for IP phones.
- E. Enable Direct Routing to a Teams-certified SBC.

Answer: CE

Explanation:

Reference:

<https://docs.microsoft.com/en-us/microsoftteams/direct-routing-analog-devices>

NEW QUESTION 4

- (Exam Topic 2)

You need to migrate a Vancouver facility user named jsmith from Skype for Business Server to Teams. Which three actions should you perform in sequence? To answer, move the appropriate actions from the list of actions to the answer area and arrange them in the correct order.

Actions

Answer Area

Run the following command.

```
Move-CsUser -Identity
jsmith@contoso.com -Target
sipfed.online.lync.com
```

Run the following command.

```
Grant-CsOnlineVoiceRoutingPolicy
-identity jsmith@contoso.com
-PolicyName Vancouver
```

Assign the Microsoft 365 Phone
System license to jsmith.

Run the following command.

```
Set-CsOnlineUser
-EnableEnterpriseVoice $true
-identity jsmith@contoso.com
```

Assign the Microsoft 365 Audio
Conferencing license to jsmith.



- A. Mastered
- B. Not Mastered

Answer: A

Explanation:

Table Description automatically generated with medium confidence

Reference:

<https://docs.microsoft.com/en-us/skypeforbusiness/hybrid/move-users-from-on-premises-to-teams> <https://docs.microsoft.com/en-us/skypeforbusiness/hybrid/move-users-from-on-premises-to-teams> <https://docs.microsoft.com/en-us/microsoftteams/direct-routing-voice-routing>

NEW QUESTION 5

- (Exam Topic 2)

You need to meet the technical requirements for the returns department.

How should you complete the PowerShell script? To answer, select the appropriate options in the answer area. NOTE: Each correct selection is worth one point.

```
$ObjId = (Get-CsOnlineApplicationInstance -Identity returns.aa@contoso.com).ObjectId
```

	▼	-Identity Returns -CallingIDSubstitute		▼
New-CsCallingLineIdentity			Anonymous	
New-CsOnlineApplicationInstance			LineURI	
New-CsTeamsCallingPolicy			Resource	
			Service	

```
-EnableUserOverride $false -ResourceAccount $ObjId -CompanyName "Contoso"
```

A. Mastered

B. Not Mastered

Answer: A

Explanation:

Graphical user interface, text Description automatically generated

NEW QUESTION 6

- (Exam Topic 2)

You need to validate the limited pilot based on the technical requirements. What should you use?

A. Microsoft 365 network connectivity test tool

B. self-help diagnostics for Teams

C. the test -CsTeamsShiftsConnectionValidflte cmdlet

D. the Teams device usage report in the Microsoft Teams admin center

Answer: A

Explanation:

Reference:

<https://docs.microsoft.com/en-us/microsoft-365/enterprise/assessing-network-connectivity?view=o365-worldwi>

NEW QUESTION 7

- (Exam Topic 2)

You need to assign the correct licenses to a sales team manager in the New York office who is scheduled to migrate from Skype for Business Server to Teams.

Which three licenses should you assign? To answer, select the licenses in the answer area. NOTE: Each correct selection is worth one point.

United States ▼

Licenses (0)

<input type="checkbox"/>	Common Area Phone 24 of 25 licenses available
<input type="checkbox"/>	Communications Credits Unlimited licenses available
<input type="checkbox"/>	Microsoft 365 Audio Conferencing 1378 of 1451 licenses available
<input type="checkbox"/>	Microsoft 365 Domestic Calling Plan 30 of 30 licenses available
<input type="checkbox"/>	Microsoft 365 Phone System 4 of 70 licenses available
<input type="checkbox"/>	Microsoft 365 Phone System – Virtual User 12 of 25 licenses available
<input type="checkbox"/>	Office 365 E3 1 of 2 licenses available

- A. Mastered
- B. Not Mastered

Answer: A

Explanation:

Graphical user interface, text, application Description automatically generated

Reference:

<https://docs.microsoft.com/en-us/microsoftteams/what-are-communications-credits>

NEW QUESTION 8

- (Exam Topic 2)

You need to configure a toll-free dial in bridge for Teams meetings. The solution must meet the technical requirements.

Which three prerequisites must be met before you can assign the toll-free bridge to Teams meeting organizers? Each correct answer presents part of the solution.

NOTE: Each correct selection is worth one point.

- A. Purchase Communications Credits.
- B. Assign a phone number to a resource account.
- C. Get an auto attendant toll-free number.
- D. Get a Dedicated conference bridge (Toll Free) number.
- E. Purchase a Microsoft 365 Domestic and International Calling Plan license.
- F. From the meeting policy, set Allow dial -in users to bypass the lobby to On.
- G. Assign a phone number to the bridge.

Answer: ADG

Explanation:

Reference:

<https://docs.microsoft.com/en-us/microsoftteams/set-up-audio-conferencing-in-teams>

NEW QUESTION 9

- (Exam Topic 2)

Once Direct Routing is deployed, you need to prepare the environment to support a reams SBA in the Vancouver facility. The solution must meet the technical requirements.

Which three actions should you perform? Each correct answer presents part of the solution. NOTE: Each correct selection is worth one point.

- A. Register an application in Azure Active Directory (Azure AD).
- B. Run the New-CsTeMsSurvivableBranchAppliance Cmdlet.
- C. Enroll the SBA server in Microsoft Intune.
- D. Configure the S8C for media bypass.
- E. Configure the SBC for call forking.
- F. Enable ForwardPAI on the online voice gateway.

Answer: ABD

Explanation:

Reference:

<https://docs.microsoft.com/en-us/microsoftteams/direct-routing-survivable-branch-appliance>

NEW QUESTION 10

- (Exam Topic 3)

You have a Microsoft Teams Phone deployment that uses Direct Routing. You need to implement Local Media Optimization.

In the Microsoft Teams admin center, you configure the external trusted IP addresses and define the network regions, network sites, and network subnets.

What should you do next?

- A. Define a voice route.
- B. Assign Session Border Controllers (SBCs) to sites.
- C. Create a trunk translation rule.
- D. Modify the default emergency calling policy

Answer: B

Explanation:

Reference:

<https://docs.microsoft.com/en-us/microsoftteams/direct-routing-media-optimization-configure>

NEW QUESTION 10

- (Exam Topic 3)

You have a Microsoft Teams Phone deployment. You are deploying Direct Routing.

All users have a SIP URI in the format of user@contoso.com. The Session Border Controller (SBC) is named sbc.voice.contoso.com.

When troubleshooting errors on the SBC, you receive the warning shown in the following exhibit.

No SIP Options.

The Session Border Controller exists in our database (your administrator created it using the command New-CSOnlinePSTNGateway). It's configured to send SIP options but we never saw SIP options coming back from this SBC.

What is a possible cause of the issue?

- A. The firewall blocks outbound traffic on port 443 to Microsoft Teams.
- B. The firewall blocks traffic to the signaling port on the SBC.
- C. TLS 1.2 is enabled on the SBC.
- D. Microsoft 365 Phone System licenses are not assigned to the users.

Answer: B

Explanation:

Reference:

<https://docs.microsoft.com/en-us/microsoftteams/troubleshoot/phone-system/direct-routing/sip-options-tls-certif>

NEW QUESTION 13

- (Exam Topic 3)

You have a Microsoft Teams Phone deployment in an office.

When a user dials an emergency number, the safety team for the office is notified. Your company opens a new office that has a Teams Phone deployment

You need to ensure that the safety team for the new office is notified when an emergency call is placed from that office.

How should you complete the PowerShell script? To answer, drag the appropriate values to the correct targets. Each value may be used once, more than once, or not at all. You may need to drag the split bar between panes or scroll to view content.

NOTE: Each correct selection is worth one point.

Values	Answer Area
Grant-CsTeamsEmergencyCallingPolicy	-Identity Site1-ECP -NotificationGroup "security@contoso.com"
New-CsOnlineVoiceRoutingPolicy	-NotificationMode NotificationOnly
New-CsTeamsEmergencyCallingPolicy	-Identity "Site1" -EmergencyCallingPolicy "Site1-ECP"
New-CsTeamsEmergencyRoutingPolicy	
Set-CsTenantNetworkSite	

- A. Mastered
- B. Not Mastered

Answer: A

Explanation:

Values	Answer Area
Grant-CsTeamsEmergencyCallingPolicy	New-CsTeamsEmergencyCallingPolicy -Identity Site1-ECP -NotificationGroup "security@contoso.com"
New-CsOnlineVoiceRoutingPolicy	-NotificationMode NotificationOnly
New-CsTeamsEmergencyCallingPolicy	Grant-CsTeamsEmergencyCallingPolicy -Identity "Site1" -EmergencyCallingPolicy "Site1-ECP"
New-CsTeamsEmergencyRoutingPolicy	
Set-CsTenantNetworkSite	

NEW QUESTION 18

- (Exam Topic 3)

You have a Microsoft Teams Phone deployment and a Survivable Branch Appliance (SBA) at a site. You add a new Teams user.

You need to ensure that the user at the site can place and receive PSTN calls in the event of an internet outage. What should you do?

- A. Add the user as a member of a call queue.
- B. Modify the online voice routing policy.
- C. Run the Grant-CsTeamsSurvivableBranchAppliancePolicy cmdlet.
- D. Run the Grant-CsTenantDialPlan cmdlet.

Answer: C

Explanation:

Reference:

<https://docs.microsoft.com/en-us/microsoftteams/direct-routing-survivable-branch-appliance>

NEW QUESTION 21

- (Exam Topic 3)

You have a Microsoft Teams Phone deployment.

You are designing a room that will be used for collaboration.

You need to select a device for the room. The device must meet the following requirements:

- Support video.
- Support one-touch join for meetings.
- Can start new meetings from within the room.
- Support HDMI ingestion of content into Teams.

Which type of device should you select? Each correct answer presents a complete solution. NOTE: Each correct selection is worth one point.

- A. Microsoft Teams Rooms on Android
- B. Microsoft Teams panels
- C. Microsoft Teams Rooms on Windows
- D. Microsoft Surface Hub 2S.
- E. Microsoft Teams displays.

Answer: AC

Explanation:

Reference:

<https://docs.microsoft.com/en-us/microsoftteams/rooms/teams-devices-feature-comparison>

NEW QUESTION 26

- (Exam Topic 3)

You are enabling users for Direct Routing. You already assigned licenses to the users. You need to complete the user setup.

Which two cmdlets should you run? Each correct answer presents part of the solution.

NOTE: Each correct selection is worth one point.

- A. Set-CsOnlineVoiceUser
- B. Grant-CsOnlineVoiceRoutinePolicy
- C. Set-CsUser
- D. Grant-CsVoicePolicy
- E. Set-CsUserPstnSettings

Answer: BC

NEW QUESTION 30

- (Exam Topic 3)

Note: This question is part of a series of questions that present the same scenario. Each question in the series contains a unique solution that might meet the stated goals. Some question sets might have more than one correct solution, while others might not have a correct solution.

After you answer a question in this section, you will NOT be able to return to it. As a result, these questions will not appear in the review screen.

Your company uses Microsoft Teams Calling Plans.

The company acquires a small development team. Currently, users on the team have their own direct inward dial (DID) numbers that have PSTN capabilities.

You migrate the users to Teams.

You need to ensure that the users have phone numbers.

Solution: From the Microsoft Teams admin center, you place a new order for service numbers. Does this meet the goal?

- A. Yes
- B. No

Answer: B

Explanation:

Reference:

<https://docs.microsoft.com/en-us/microsoftteams/getting-service-phone-numbers>

NEW QUESTION 35

- (Exam Topic 3)

You have Microsoft Teams Phone handsets.

You need to receive an alert when a handset of an executive goes offline. What should you do in the Microsoft Team admin center?

- A. Create a Teams app setup policy and assign the policy to all executives.
- B. Create a configuration profile for IP phones.
- C. Register the handsets by using remote provisioning.
- D. Modify the device state rule.

Answer: D

Explanation:

Reference:

<https://docs.microsoft.com/en-us/microsoftteams/alerts/device-health-status>

NEW QUESTION 36

- (Exam Topic 3)

You need to implement Local Media Optimization.

- A. 132.245.0.0/16 and 40.104.0.0/15
- B. 10.10.0.0/24 and 10.11.0.0/24
- C. 8.8.8.8/32 and 4.4.2.2/32
- D. 52.112.0.0/14 and 52.120.0.0/14

Answer: D

Explanation:

Reference:

https://docs.microsoft.com/en-us/microsoftteams/direct-routing-plan

NEW QUESTION 40

- (Exam Topic 3)

Your company has an on-premises deployment of Microsoft Skype for Business Server 2015 with CU8 that is configured for hybrid connectivity.

You are migrating to Microsoft Teams Phone. A Direct Routing trunk is used for PSTN connectivity. The company requires that phone number assortments be performed in Active Directory.

You plan to create a call queue that will service users both on-premises and in the cloud.

You need to create and assign a resource account for the call queue. The call queue must be able to teach users regardless of which platform they are on.

Which three actions should you perform in sequence? To answer, move the appropriate actions from the list of actions to the answer area and arrange them in the correct order.

Actions

- From Microsoft Teams PowerShell, run the `set-CsOnlineApplicationInstance` cmdlet and assign a phone number to the resource account.
- From the Skype for Business Server Management Shell, run the `New-CsHybridApplicationEndpoint` cmdlet and specify the `-LineURI` parameter.
- From Org-wide settings in the Microsoft Teams admin center, select **Resource accounts**, and then select **Add**.
- From the Microsoft 365 admin center, assign a Microsoft 365 Domestic Calling Plan license to the account.
- From the Microsoft 365 admin center, assign a Microsoft 365 Phone System - Virtual User.
- Assign the resource account to the call queue during the call queue setup.

Answer Area

- A. Mastered
- B. Not Mastered

Answer: A

Explanation:

Actions

- From Microsoft Teams PowerShell, run the `set-CsOnlineApplicationInstance` cmdlet and assign a phone number to the resource account.
- From the Skype for Business Server Management Shell, run the `New-CsHybridApplicationEndpoint` cmdlet and specify the `-LineURI` parameter.
- From Org-wide settings in the Microsoft Teams admin center, select **Resource accounts**, and then select **Add**.
- From the Microsoft 365 admin center, assign a Microsoft 365 Domestic Calling Plan license to the account.
- From the Microsoft 365 admin center, assign a Microsoft 365 Phone System - Virtual User.
- Assign the resource account to the call queue during the call queue setup.

Answer Area

From the Skype for Business Server Management Shell, run the `New-CsHybridApplicationEndpoint` cmdlet and specify the `-LineURI` parameter.

Assign the resource account to the call queue during the call queue setup.

From Org-wide settings in the Microsoft Teams admin center, select **Resource accounts**, and then select **Add**.

NEW QUESTION 45

- (Exam Topic 3)

You are deploying Microsoft Teams Phone.

You have offices in the United States, the United Kingdom, Brazil, India, and China. You will use Direct Routing for all the locations.

You need to create a network topology for roaming bandwidth policies.

Which two actions should you perform? Each correct answer presents part of the solution. NOTE: Each correct selection is worth one point.

- A. Add the Teams client public IP addresses to the Trusted IPs list.
- B. Create a network site.
- C. From the Microsoft 365 admin center, assign a usage location.
- D. Set Preferred country or region for media traffic for the Session Border Controller (SBC).
- E. Implement dynamic emergency calling with Presence Information Data Format Location Object (PIDF-LO).

Answer: ABE

Explanation:

Reference:

https://docs.microsoft.com/en-us/microsoftteams/manage-your-network-topology

NEW QUESTION 47

- (Exam Topic 3)

You have a Microsoft Teams Phone deployment that uses Direct Routing. You create a new Teams user named User1.

You need to enable User1 as an agent in a call queue. What should you do first?

- A. Assign a dial plan to User1.
- B. Assign a phone number to User1.
- C. Enable hosted voicemail for User1.
- D. Enable Enterprise Voice for User1.

Answer: D

Explanation:

Reference:

<https://docs.microsoft.com/en-us/microsoftteams/plan-auto-attendant-call-queue>

NEW QUESTION 50

- (Exam Topic 3)

You are selecting devices for use in conference rooms. The conference rooms must support two front of room displays.

Which two types of devices meet the requirements? Each correct answer presents a complete solution. NOTE: Each correct selection is worth one point.

- A. Microsoft Teams Rooms on Android
- B. Microsoft Teams displays
- C. Microsoft Teams audio conference phones
- D. Microsoft Teams Rooms on Windows
- E. Microsoft Surface Hub 2S

Answer: AD

Explanation:

Reference:

<https://docs.microsoft.com/en-us/microsoftteams/rooms/teams-devices-feature-comparison>

NEW QUESTION 55

- (Exam Topic 3)

Note: This question is part of a series of questions that present the same scenario. Each question in the series contains a unique solution that might meet the stated goals. Some question sets might have more than one correct solution, while others might not have a correct solution.

After you answer a question in this section, you will NOT be able to return to it. As a result, these questions will not appear in the review screen.

You need to create a new call queue to route calls to support agents. The support agents must be able to see their call queue history and the shared transcribed voicemail. The solution must minimize administrative effort.

Solution: You set the routing method for the call queue to Attendant routing. Does this meet the goal?

- A. Yes
- B. No

Answer: B

Explanation:

Reference:

<https://www.orbid365.be/shared-voicemail-arrives-in-teams/>

NEW QUESTION 60

- (Exam Topic 3)

You need to provide Microsoft Teams users with the ability to perform PSTN calling through a Session Border Controller (SBC). Which licenses can you assign to achieve the goal?

- A. Office 365 E3 and Office 365 E5
- B. Microsoft 365 E3 and Microsoft 365 E5
- C. Microsoft 365 E5 and Office 365 E5
- D. Office 365 E3 and Microsoft 365 E3

Answer: D

NEW QUESTION 62

- (Exam Topic 3)

You have a Microsoft Teams Phone deployment.

When you attempt to deploy a Session Border Controller (SBC) named sfac1xontoso.com. you receive the following error message: "We cant use the "SBCI-Contoso.com" domain as it hasn't been set up in the organization. Try agaax. If you continue to have problems, contact Microsoft customer support."

You need to add the SBC to the tenant.

Which three actions should you perform in sequence? To answer, move the appropriate actions from the list of actions to the answer area and arrange them in the correct order.

Actions

From the Microsoft 365 admin center, add a licensed user that has a UPN to the contoso.com domain.

From the Microsoft Teams admin center, enable external access for the contoso.com domain.

From the Microsoft Teams admin center, add the SBC as sbc1.contoso.onmicrosoft.com.

From the Microsoft 365 admin center, validate the contoso.com domain.

From the Microsoft Teams admin center, add the SBC as sbc1.contoso.com.

Answer Area

- A. Mastered
- B. Not Mastered

Answer: A

Explanation:

Actions

From the Microsoft 365 admin center, add a licensed user that has a UPN to the contoso.com domain.

From the Microsoft Teams admin center, enable external access for the contoso.com domain.

From the Microsoft Teams admin center, add the SBC as sbc1.contoso.onmicrosoft.com.

From the Microsoft 365 admin center, validate the contoso.com domain.

From the Microsoft Teams admin center, add the SBC as sbc1.contoso.com.

Answer Area

From the Microsoft Teams admin center, add the SBC as sbc1.contoso.onmicrosoft.com.

From the Microsoft 365 admin center, add a licensed user that has a UPN to the contoso.com domain.

From the Microsoft Teams admin center, add the SBC as sbc1.contoso.com.

NEW QUESTION 63

- (Exam Topic 3)

Your company currently allows call park lot all PSIN users. The call pack policies are configured as shown in the exhibit. (Click the Exhibit tab.)

Call park policies

Call park lets people put a call on hold and transfer it to other people within your organization. Call park policies let you control which users are call park enabled and make other call park setting changes for them. You can use the Global (Org-wide default) policy and customize it or create one or more custom policies and assign them to users. [Learn more](#)

Call park policies summary

1

Default policy

0

Custom policies

User statistics

0

Custom policies

50

Default policies

Manage policies

Group policy assignment

+ Add

✎ Edit

📄 Duplicate

🗑️ Delete

👤 Assign to group

👤 Manage users

1 item

✓	Name ↑	Description	Custom policy	Call park
	Global (Org-wide default)		No	Yes

You have a Microsoft 365 group named Help Desk.
You need to ensure that only the Help Desk group can use call park. The solution must minimize the number of policies and administrative effort.
Which three actions should you perform? Each correct answer presents part of the solution. NOTE: Each correct selection is worth one point.

- A. Assign Policy2 to all users.
- B. In the Global (Org-wide default) policy, set Allow call park to Off.
- C. Create a new call park policy named Policy2 and set Allow call park to Off.
- D. Assign Policy1 to the Help Desk group.
- E. Assign the Global (Org-wide default) policy to the users in the Help Desk group.
- F. Create a new call park policy named Policy1 and set Allow call park to On

Answer: BDF

Explanation:

Reference:
https://docs.microsoft.com/en-us/microsoftteams/call-park-and-retrieve

NEW QUESTION 66

- (Exam Topic 3)

You have an analog phone system.

You plan to migrate to Microsoft Teams Phone.
You need to recommend devices for common area phones that any user can use. The solution must meet the following requirements;

- Can access the Teams directory for dial by name.
- Can be administered remotely.
- Can place and pick up calls.
- Support hot desking.
- Minimize costs.

Which type of devices should you recommend?

- A. Microsoft-certified 3PIP handsets
- B. Microsoft Teams-certified handsets
- C. Microsoft Teams Rooms devices
- D. Microsoft-certified headsets
- E. the existing analog handsels

Answer: C

NEW QUESTION 69

- (Exam Topic 3)
You have a Teams Phone deployment that contains a Session Border Controller (SBC) named SBC1. You deploy a second SBC named SBC2 that is configured as shown in the following exhibit.

sbc2.contoso.com

You must use the SBC's FQDN that has the host name registered in DNS. For example, if your organization owns **contoso.com** then **sbc.contoso.com** is good name for the SBC, but **sbc.contoso.onmicrosoft.com** isn't. [Learn more](#)

Add a description so you know why it was created

SBC settings

When you are adding this SBC, you can turn on or off the SBC and change settings that are specific to the SBC.

Enabled

Off

SIP signaling port

5067

Send SIP options ⓘ

On

Forward call history

Off

Forward P-Asserted-Identity (PAI) header ⓘ

Off

Concurrent call capacity

24

Failover response codes

408, 503, 504

Failover time (seconds) ⓘ

30

SBC supports PIDF/LO for emergency calls

Off

You discover that SBC2 fails to receive SIP Options packets from Microsoft SIP gateways and you notice that calls take a long time to connect. Use the drop down menus to select the answer choice that completes each statement based on the information presented in the graphic.
NOTE: Each correct selection is worth one point.

Answer Area

SIP options are NOT received because [answer choice]

SBC2 is disabled

PIDF/LO is disabled

SBC2 does NOT support PAI

a failover response code of 200 must be set

Calls take a long time to connect because [answer choice]

PIDF/LO is disabled

the calls fail over to SBC1

SBC2 does NOT support PAI

a failover response code of 200 must be set

- A. Mastered
- B. Not Mastered

Answer: A

Explanation:

Box 1: SBC2 is disabled SBC Settings: Enabled Off
Box 2: the calls fail over to SBC1

NEW QUESTION 73

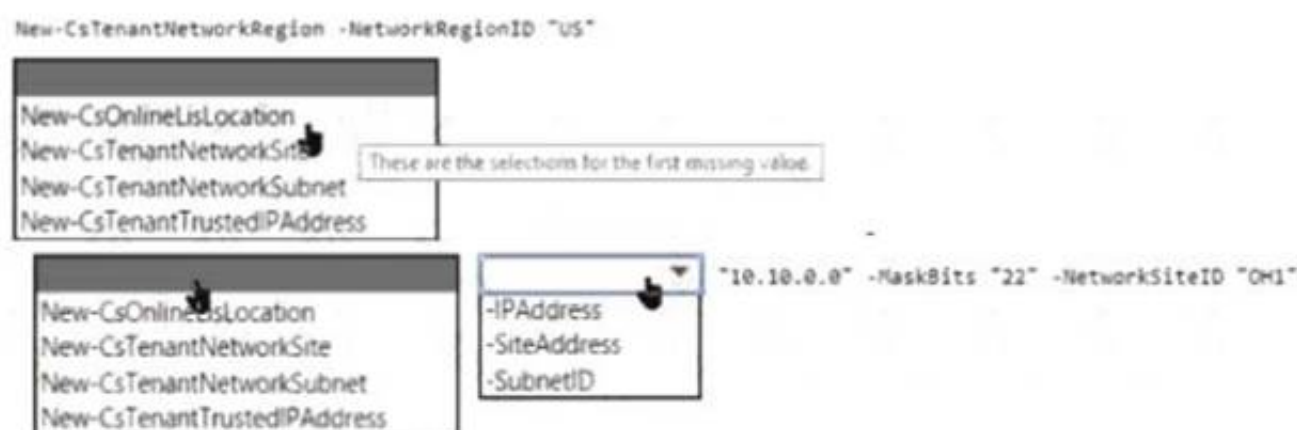
- (Exam Topic 3)

You have a Microsoft Teams Phone deployment You are implementing dynamic emergency calling.

You need to define a network topology for the implementation.

How should you complete the PowerShell script? To answer, select the appropriate options in the answer area. NOTE: Each correct selection a worth one point

Answer Area



- A. Mastered
- B. Not Mastered

Answer: A

Explanation:

Answer Area



NEW QUESTION 78

- (Exam Topic 3)

Your company hires a new employee in Lisbon.

You assign a Microsoft 365 E3 license to the employee.

The employee must schedule meetings that will include customers in Lisbon. The customers will dial in to the meetings by using PSTN.

You need to ensure that the employee can send meeting invitations that include a dial-in conferencing bridge. The bridge must be set to a local number in Lisbon instead of the company's default dial-in conferencing bridge number.

Which two actions should you perform? Each correct answer presents part of the solution. NOTE: Each correct selection is worth one point.

- A. From Users in the Microsoft Teams admin center, edit the Audio conferencing settings of the employee.
- B. From the Microsoft Teams admin center, modify the settings of the default conferencing bridge.
- C. From the Microsoft 365 admin center, assign an Auto Conferencing add-on license to the employee.
- D. From the Microsoft 365 admin center, set the usage location of the employee to Portugal.

Answer: BC

Explanation:

Reference:

<https://docs.microsoft.com/en-us/microsoftteams/audio-conferencing-in-office-365> <https://docs.microsoft.com/en-us/microsoftteams/change-the-phone-numbers-on-your-audio-conferencing-bridg>

NEW QUESTION 82

- (Exam Topic 3)

You have a Microsoft 365 tenant that has Modern authentication enabled for an services Multi-factor authentication (MFA) is enforced for all users.

You are deploying Microsoft Teams Rooms.

The first time you attempt to sign in to a Teams Rooms, you receive an error message indicating that the device cannot sign in to Teams.

You verify that Modern authentication is enabled in Teams Rooms. What prevents you from signing in?

- A. The Microsoft Authenticates app is not configured for the Teams Rooms account
- B. The Teams Rooms account is not licensed for Microsoft intune.
- C. Teams Rooms must be domain joined first.
- D. MFA is unsupported In reams Rooms.

Answer: D

NEW QUESTION 86

- (Exam Topic 3)

Your company has a Teams Phone deployment.

The network team at the company completes a local internet breakout for Teams traffic.

To validate the configuration, you review the Call Debug log shown in the following exhibit.

Connectivity_TransportBytesSent	3324
Connectivity_TransportMode	2
Connectivity_TransportPktsReceived	18
Connectivity_TransportPktsSent	20
Connectivity_BaseAddress	192.168.1.216:50008
Connectivity_LocalAddress	192.168.1.216:50011
Connectivity_LocalSite	120.17.163.212:1883
Connectivity_RemoteAddress	52.113.88.214:49704
Connectivity_RemoteSite	52.113.88.214:49704
IsRetargeted	0

Use the drop down menus to select the answer choice that completes each statement based on the information presented in the graphic.
NOTE: Each correct selection is worth one point.

Answer Area

The WAN IP address for the call source is [answer choice].

▼

52.113.88.214

120.17.163.212

192.168.1.216

The WAN port for call destinations is [answer choice].

▼

1883

49704

50008

50011

- A. Mastered
- B. Not Mastered

Answer: A

Explanation:

Answer Area

The WAN IP address for the call source is [answer choice].

▼

52.113.88.214

120.17.163.212

192.168.1.216

The WAN port for call destinations is [answer choice].

▼

1883

49704

50008

50011

NEW QUESTION 90

- (Exam Topic 3)

You have a Microsoft Teams Phone deployment that contains a Session Border Controller (SBC) named SBC1.contoso.com. Direct Routing integrates with a PBX phone system that uses only four-digit dialing and is configured to use the SBC. Teams is configured to use dial plans that normalize any four-digit calls to E.164. You have the following translation rule.

Identity: rule1

Name: rule1

Pattern: ^\+1(\d{10});ext=(\d{4})\$

Translation: \$2

You need to ensure that calls to the legacy PBX pass only a four-digit extension.

How should you complete the PowerShell command? To answer, select the appropriate options in the answer area.

NOTE: Each correct selection is worth one point.

Answer Area

▼	-identity SBC1.contoso.com	▼	"rule1"
Set-CsHybridPSTNAppliance		-InboundPstnNumherTranslationRules	
Set-CsHybridPSTNSite		-InboundTeamsNumberTranslationRules	
Set-CsOnlinePSTNGateway		-OutboundPstnNumberTranslationRules	
Set-CsOnlinePSTNUsage		-OutboundTeamsNumberTranslationRules	

- A. Mastered
- B. Not Mastered

Answer: A

Explanation:

Box 1: Set-CsOnlinePSTNGateway

* Set-CsOnlinePSTNGateway

Modifies the previously defined Session Border Controller (SBC) Configuration that describes the settings for the peer entity. This cmdlet was introduced with Microsoft Phone System Direct Routing.

Syntax

Set-CsOnlinePSTNGateway [-Identity] <string>

[-BypassMode <string>]

[-Description <string>] [-Enabled <boolean>]

[-FailoverResponseCodes <string>] [-FailoverTimeSeconds <int>]

[-ForwardCallHistory <boolean>] [-ForwardPai <boolean>]

[-GatewayLbrEnabledUserOverride <boolean>] [-GatewaySiteId <string>]

[-GatewaySiteLbrEnabled <boolean>]

[-InboundPstnNumberTranslationRules <Object>]

[-InboundTeamsNumberTranslationRules <Object>] [-MaxConcurrentSessions <int>]

[-MediaBypass <boolean>]

[-MediaRelayRoutingLocationOverride <string>]

[-OutboundPstnNumberTranslationRules <Object>]

[-OutboundTeamsNumberTranslationRules <Object>] [-PidfLoSupported <boolean>]

[-ProxySbc <string>]

[-SendSipOptions <boolean>] [-SipSignalingPort <int>]

[-WhatIf] [-Confirm]

[<CommonParameters>]

Box 2: -OutboundPSTNNumberTranslationRules

Assigns an ordered list of Teams translation rules, that apply to PSTN number on outbound direction. Incorrect:

* -OutboundPSTNNumberTranslationRules

Assigns an ordered list of Teams translation rules, that apply to PSTN number on outbound direction.

* SET-CsHybridPSTNAppliance

Use the Set-CsHybridPSTNAppliance cmdlet to modify an existing Skype for Business Cloud Connector Edition appliance's attributes.

Note: This cmdlet will be deprecated from Teams PowerShell Module. Syntax:

Set-CsHybridPSTNAppliance

[-MaintenanceMode <Boolean>] [-MediationServerGruu <String>]

[-Identity] <XdsGlobalRelativeIdentity> [-Tenant <Guid>]

[-Force]

[-WhatIf] [-Confirm]

[<CommonParameters>]

* Set-CsHybridPSTNSite

Use the Set-CsHybridPSTNSite cmdlet to modify an existing hybrid public switched telephone network (PSTN) site's attributes.

Note: This cmdlet will be deprecated from Teams PowerShell Module. Syntax:

Set-CsHybridPSTNSite

[-Identity] <XdsGlobalRelativeIdentity> [-Tenant <Guid>]

[-EdgeFQDN <String>]

[-EnableAutoUpdate <Boolean>]

[-BitsUpdateTimeWindow <Int32>] [-OsUpdateTimeWindow <Int32>] [-Force]

[-WhatIf] [-Confirm]

[<CommonParameters>]

* Set-CsOnlinePSTNUsage

Modifies a set of strings that identify the allowed online public switched telephone network (PSTN) usages. This cmdlet can be used to add usages to the list of online PSTN usages or remove usages from the list.

Syntax:

Set-CsOnlinePstnUsage [-Identity] <string>

[-Usage <Object>] [-WhatIf]
[-Confirm] [<CommonParameters>] Reference:
https://learn.microsoft.com/en-us/powershell/module/skype/set-csonlinepstngateway

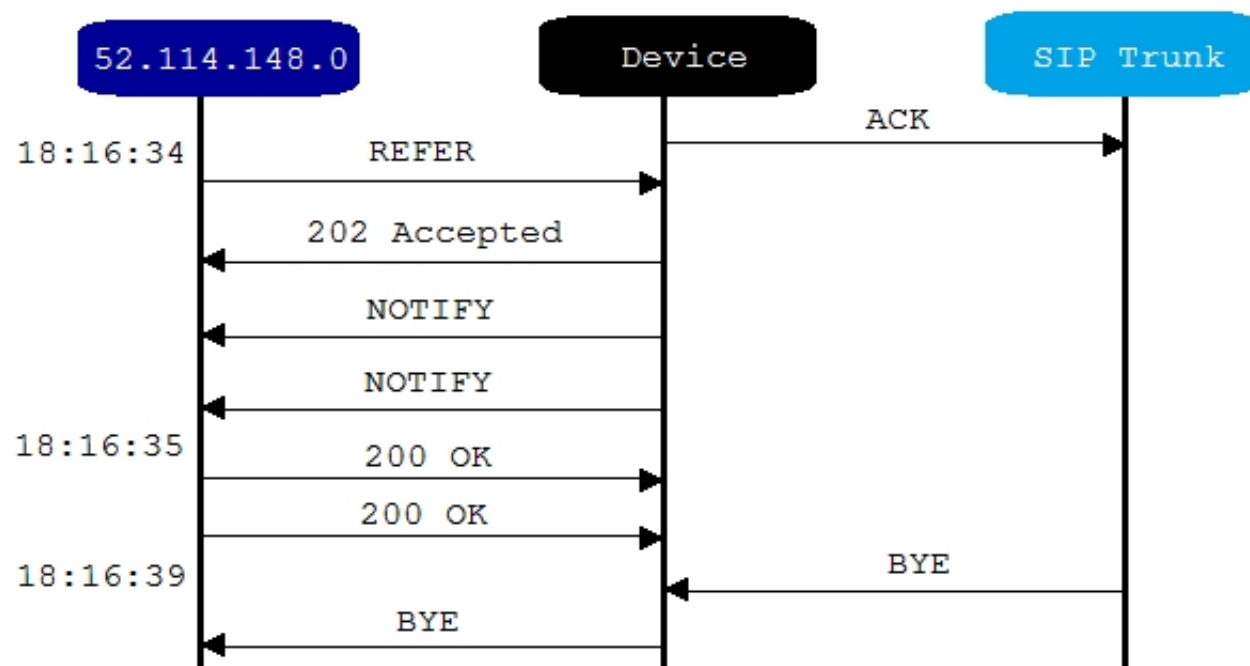
NEW QUESTION 91

- (Exam Topic 3)

Your company has a Microsoft Teams Phone deployment that uses Direct Routing and a single carrier. You deploy a new Session Border Controller (SBC) that shows as healthy in the Microsoft Teams admin center.

You place a test call over the new SBC, and the call succeeds.

When you attempt to transfer the call, the transfer fails. A portion of the SIP ladder is shown in the exhibit. (Click the Exhibit tab.)



What is a possible cause of the issue?

- A. The SSL certificate of the SBC is incorrect.
- B. The Refer on the SBC is misconfigured.
- C. notify is enabled in the SIP options of the SBC.
- D. The carrier rejects the format of the forwarded FROM number.

Answer: B

Explanation:

Reference:

https://docs.microsoft.com/en-us/microsoftteams/troubleshoot/phone-system/direct-routing/issues-with-call-tran

NEW QUESTION 93

- (Exam Topic 3)

You have a Microsoft Teams deployment.

You need to ensure that users can schedule meetings that have the following: Presenter bios

Attendee registration Registration management

Which two types of policies should you configure? Each correct answer presents part of the solution. NOTE: Each correct selection is worth one point.

- A. app permission policy
- B. meeting policy
- C. live events policy
- D. meeting template policy
- E. teams events policy
- F. customization policy

Answer: BC

Explanation:

B: Turn meeting registration on or off

Follow these steps in the Teams admin center to turn meeting registration on or off:

- * 1. Open the Teams admin center.
- * 2. Select Meetings from the navigation pane.
- * 3. Under Meetings, select Meeting Policies.
- * 4. Either select an existing policy or create a new one.
- * 5. Within your chosen policy, navigate to the Meeting scheduling section.
- * 6. Turn Meeting Registration setting On or Off.
- * 7. Select Save

C: Live events policies are used to control who in your organization can hold live events and the features that are available in the events they create. You can use the default policy or create one or more custom live events policies. After you create a custom policy, assign it to a user or groups of users in your organization.

Reference:

https://learn.microsoft.com/en-us/microsoftteams/set-up-meeting-registration https://learn.microsoft.com/en-us/microsoftteams/teams-live-events/set-up-for-teams-live-events

NEW QUESTION 98

- (Exam Topic 3)

Your company uses a third-party ticketing system.

You need to send an alert to the ticketing system when an IP phone goes offline. What should you do?

- A. Add a webhook.
- B. Create a live events policy.
- C. Add a channel alert.
- D. Add a configuration profile for the IP phones.

Answer: A

NEW QUESTION 103

- (Exam Topic 3)

You have a Microsoft Teams Phone deployment. Direct Routing is enabled for all users. The users can place and receive PSTN calls. You are implementing emergency numbers in Teams.

You need to remove the + symbol from any three-digit calls to the Session Border Controller (SBC)..

How should you complete the PowerShell script? To answer, drag the appropriate values to the correct targets. Each value may be used once, more than once, or not at all. You may need to drag the split bar between panes or scroll to view content.

NOTE: Each correct selection is worth one point.

- A. Mastered
- B. Not Mastered

Answer: A

Explanation:

Graphical user interface, text, application, email Description automatically generated

Reference:

<https://docs.microsoft.com/en-us/powershell/module/skype/new-csteamstranslationrule?view=skype-ps> <https://docs.microsoft.com/en-us/microsoftteams/direct-routing-translate-numbers>

NEW QUESTION 105

- (Exam Topic 3)

You are optimizing a network to better support voice and collaboration workloads in Microsoft Teams. When the users are at a specific corporate site, you need to prevent the users from adding video during calls. Solution: You run New-CsTeamsNetworkRoamingPolicy and set the -AllowiPvideo parameter to \$False. Does this meet the goal?

- A. Yes
- B. No

Answer: B

NEW QUESTION 106

- (Exam Topic 3)

You have a Microsoft Teams Phone deployment.

You have Teams devices located in meeting rooms and public areas. You need to turn on Device lock for the devices.

What should you configure?

- A. a calling policy
- B. a setup policy
- C. a Teams policy
- D. a configuration profile

Answer: D

Explanation:

Microsoft Teams Physical Device Management

NOTE: As at June 2020, there are no options to configure the Device Configuration Profiles by API or PowerShell.

There are a number of Microsoft Teams certified devices on the market from several different manufactures. These devices are listed on the Microsoft Teams Devices Page.

Once a device is logged in and the user setup, the device is registered to the tenant and a policy applied against it from the Configuration Profiles listed in the Microsoft Teams Admin Portal.

These Configuration Profiles allow you to set options like the devices: Timeout and lock status

Language Timezone Time format Screen saver

Network settings; and

To enable or disable the second PC port

If the Microsoft 365 tenant also has Intune setup, then the device is registered to Intune and any compliance policies are applied when the first user logs in.

Different Configuration Profiles can be used to setup phones with common attributes Reference:

https://sbconnect.com.au/pages/physical-device-management.html

NEW QUESTION 107

- (Exam Topic 3)

You are deploying Teams Rooms to a Windows device.

You need to prevent meeting attendees from using room remote in the Teams mobile app. What should you configure in the Microsoft Teams admin center?

- A. Supported meeting mode
- B. Coordinated Meetings
- C. Front row experience
- D. Bluetooth beaconing

Answer: D

Explanation:

Manage a Microsoft Teams Rooms console settings remotely with an XML configuration file

This article discusses remote management of the default settings used by a Microsoft Teams Rooms device. It discusses how to create a master settings file and links to discussions of how to place them as needed on Teams Rooms.

It is possible for you to change default settings of Teams Rooms by updating a master XML file and sending copies to the remote Teams Rooms devices.

Create an XML configuration file

Any text editor can be used to create a settings file. The XML Elements table explains the elements shown in this sample SkypeSettings.xml (required file name) configuration file.

<SkypeSettings>

<AutoScreenShare>1</AutoScreenShare>

<HideMeetingName>1</HideMeetingName>

<AutoExitMeetingEnabled>>true</AutoExitMeetingEnabled>

<AudioRenderDefaultDeviceVolume>70</AudioRenderDefaultDeviceVolume>

* Details omitted*

<AllowRoomRemoteEnabled>true</AllowRoomRemoteEnabled> Incorrect:

Not B: If you have one or more Microsoft Teams Rooms on Windows devices or Surface Hubs in a meeting room, you can set up Coordinated Meetings.

Coordinated Meetings lets you set up your Teams Rooms on Windows devices and Surface Hubs so that when you join a meeting on one device, the other devices in the room are also joined to the same meeting. You can configure your cameras, speakers, and microphones so that the ones that give participants the best experience are enabled while others are disabled. This avoids the dreaded echo and feedback noise participants can experience when adding multiple devices to a meeting.

Not C: Front Row layout in Teams Rooms— Additional functionality with the Front Row experience, a layout for hybrid meetings that enables users to see remote attendees at eye level and on dual screens. Users can see Chat in the right panel and participants with raised hands on the left panel. And, Meeting Chat is added in the Gallery, Large Gallery, and Together Mode layouts.

Reference:

https://learn.microsoft.com/en-us/microsoftteams/rooms/xml-config-file https://learn.microsoft.com/en-us/microsoftteams/rooms/coordinated-meetings

NEW QUESTION 110

- (Exam Topic 3)

You use Microsoft Teams live events.

You configure a live events policy as shown in the following exhibit.

Sales Live Event Policy

Policy for Melbourne Live Events

Live events scheduling	<div><div></div>On</div>
Transcription for attendees	
This setting is also controlled at Meetings > Meeting policies > Voice > Calling policies and Voice > Voicemail policies	<div><div></div>On</div>
Who can join scheduled live events	
This setting is also controlled at Meetings > Meeting policies and Meetings > Meeting settings	Everyone in the organization
Record an event	
This setting is also controlled at Meetings > Meeting policies and voice > Calling policies	Always record

Use the drop-down menus to select the answer choice that completes each statement based on the information presented in the graphic.

NOTE: Each correct selection is worth one point.

Answer Area

The policy will allow [answer choice] to join a live event

	▼
only employees	
employees and their guests only	
employees, guests, and federated partners	

Live events based on the policy will support [answer choice]

	▼
attendee registration	
presenter bios	
subtitles in different languages	

- A. Mastered
- B. Not Mastered

Answer: A

Explanation:

Box 1: only employees

In the exhibit we see: Who can join scheduled live events: Everyone in the organization Box 2: subtitles in different languages

We see: Transcription for attendees: On Reference:

<https://learn.microsoft.com/en-us/microsoftteams/teams-live-events/plan-for-teams-live-events>

NEW QUESTION 115

- (Exam Topic 3)

You have a Microsoft Teams deployment.

You plan to use a SkypeSettings.xml file to deploy Teams Rooms.

Which two actions can you perform in the file? Each correct answer presents a complete solution. NOTE: Each correct selection is worth one point.

- A. Define the account sign-in credentials.
- B. Allow remote control from personal devices.
- C. Automatically accept proximity-based meeting invitations.
- D. Enable the default video camera.

Answer: BC

Explanation:

Manage console settings with an XML configuration file

At startup, if a Microsoft Teams Rooms console finds an XML file named SkypeSettings.xml located at

C:\Users\Skype\AppData\Local\Packages\Microsoft.SkypeRoomSystem_8wekyb3d8bbwe\LocalState, it applies the configuration settings indicated by the XML file then deletes the XML file.

XML elements include:

* <AllowRoomRemoteEnabled> Boolean

If true, room remote connections are allowed. Enabled by default.

* <AutoAcceptProximateMeetingInvitations> Boolean

If true, proximity based meetings are automatically accepted. Disabled by default.

Reference:

<https://learn.microsoft.com/en-us/microsoftteams/rooms/xml-config-file>

NEW QUESTION 116

- (Exam Topic 3)

You have a Microsoft Teams conference room named ConferenceRoom01.

You need to ensure that ConferenceRoom01 can be invited directly to third party online meetings by partner organizations.

How should you complete the PowerShell command? To answer, select the appropriate options in the answer area.

NOTE: Each correct selection is worth one point.

Answer Area

	▼
Enable-CsMeetingRoom	
Set-CalendarProcessing	
Set-CsMeetingConfiguration	
Set-CsTeamsRoomVideoTeleConferencingPolicy	

-Identity "ConferenceRoom01"

	▼
-AutomateProcessing AutoAccept	
-PlaceExternalCalls Enabled	
-ProcessExternalMeetingMessages \$true	
-ReceiveExternalCalls Enabled	

- A. Mastered
- B. Not Mastered

Answer: A

Explanation:

Box 1: Set-CalendarProcessing

Allow calendar invite processing for third-party meetings

The first thing you need to do to enable a one-touch join experience from Team Rooms is set the calendar processing rules for the device's Exchange Online room mailbox. The room mailbox needs to allow external meetings and keep the message body and subject so it can see the URL needed to join the third-party meeting. To set these room mailbox options using the Set-CalendarProcessing cmdlet, do the following:

* 1. Connect to Exchange Online PowerShell.

* 2. Get the User Principal Name (UPN) of the room mailbox if you don't know it by running the following command:

Get-Mailbox | Where {\$_.RoomMailboxAccountEnabled -eq \$True} | Format-Table Name, UserPrincipalName

* 3. Find the name of the room mailbox associated with your Teams Rooms device and make note of its UPN.

* 4. After you find the room mailbox's UPN, run the following command. Replace <UserPrincipalName> with the room mailbox's UPN:

Set-CalendarProcessing <UserPrincipalName> -ProcessExternalMeetingMessages \$True -DeleteComments \$

Box 2: -ProcessExternalMeetingMessages

Reference:

<https://learn.microsoft.com/en-us/microsoftteams/rooms/third-party-join#step-3a-enable-third-party-meetings-on>

NEW QUESTION 121

- (Exam Topic 3)

Note: This question is part of a series of questions that present the same scenario. Each question in the series contains a unique solution that might meet the stated goals. Some question sets might have more than one correct solution, while others might not have a correct solution.

After you answer a question in this section, you will NOT be able to return to it. As a result, these questions will not appear in the review screen.

Your company uses Microsoft Teams Calling Plans.

The company acquires a small development team. Currently, users on the team have their own direct inward dial (DID) numbers that have PSTN capabilities.

You migrate the users to Teams.

You need to ensure that the users have phone numbers. Solution: You run the New-CsHybridTelephoneNumber cmdlet. Does this meet the goal?

A. Yes

B. No

Answer: B

NEW QUESTION 123

- (Exam Topic 3)

You have a Microsoft Teams Phone deployment that is used in the United States. You need to ensure that emergency calls placed to 9911.

What should you configure?

A. a dial plan normalization rule

B. an emergency calling policy

C. an emergency call routing policy

D. an outbound PSTN number translation rule

Answer: C

NEW QUESTION 128

- (Exam Topic 3)

Note: This question is part of a series of questions that present the same scenario. Each question in the series contains a unique solution that might meet the stated goals. Some question sets might have more than one correct solution, while others might not have a correct solution.

After you answer a question in this section, you will NOT be able to return to it. As a result, these questions will not appear in the review screen.

You need to create a new call queue to route calls to support agents. The support agents must be able to see their call queue history and the shared transcribed voicemail. The solution must minimize administrative effort.

Solution: You redirect calls for the call queue to a shared voicemail box. Does this meet the goal?

A. Yes

B. No

Answer: B

Explanation:

Reference:

<https://www.orbid365.be/shared-voicemail-arrives-in-teams/>

NEW QUESTION 132

- (Exam Topic 3)

You are deploying Microsoft Teams Phone.

You need to provide a user with a device on his desk that can be used when the user's computer is turned off. The device must meet the following requirements:

➤ Support calls.

➤ Support video.

➤ Support speed dial.

➤ Display chat history.

Which type of device should you provide?

A. Teams-certified handset

B. Teams display

C. Teams panel

D. Teams Rooms

Answer: B

Explanation:

Reference:

<https://support.microsoft.com/en-us/office/get-started-with-teams-displays-ff299825-7f13-4528-96c2-1d3437e6>

NEW QUESTION 134

- (Exam Topic 3)

Note: This question is part of a series of questions that present the same scenario. Each question in the series contains a unique solution that might meet the stated goals. Some question sets might have more than one correct solution, while others might not have a correct solution.

After you answer a question in this section, you will NOT be able to return to it. As a result, these questions will not appear in the review screen.

Your company uses configuration profiles to manage Microsoft Teams-certified IP phones. The Standard configuration profile is applied to the IP phones.

The help desk receives reports that several user phones fail to lock automatically after the timeout period. You need to verify whether the configuration profile is applied to the problematic phones.

Solution: From Teams Devices in the Microsoft Teams admin center, you select Phones select the Configuration profiles tab, select the Standard Phone Policy, and select Assigned devices.

Does this meet the goal?

- A. Yes
- B. No

Answer: B

NEW QUESTION 138

- (Exam Topic 3)

You have a Microsoft Teams Phone deployment.

You are deploying Direct Routing with media bypass.

You need to define a Session Border Controller (SBC) in Teams.

How should you complete the command? To answer, select the appropriate options in the answer area.

NOTE: Each correct selection is worth one point.

▼

-Identity sbc.contoso.com -Enabled \$true

New-CsOnlinePSTNGateway

New-CsOnlineVoiceRoute

New-CsOnlineVoiceRoutingPolicy

Set-CsOnlinePstnUsage

▼

5061 -MaxConcurrentSessions 100 -MediaBypass \$true

-BypassMode

-CodecPriority

-FailoverResponseCodes

-SipSignalingPort

- A. Mastered
- B. Not Mastered

Answer: A

Explanation:

Graphical user interface, text, application, email Description automatically generated

Reference:

<https://docs.microsoft.com/en-us/powershell/module/skype/new-csonlinepstngateway?view=skype-ps>

NEW QUESTION 142

- (Exam Topic 3)

You have a Microsoft Teams Phone deployment.

You need to configure users to include a toll free phone number as part of their meeting invites. Which type of policy should you configure?

- A. voice routing
- B. audio conferencing
- C. customization
- D. meeting

Answer: B

Explanation:

Initial assignment of phone numbers that are included in the meeting invites for users

The phone numbers included in the meeting invites of users enabled for Audio Conferencing are defined in the TeamsAudioConferencingPolicy that's assigned to users. When a TeamsAudioConferencingPolicy is assigned to a user, all toll and toll-free phone numbers added in the policy are included in meeting invites for users who have that policy. If a user is assigned a TeamsAudioConferencingPolicy and there aren't any toll or toll-free phone numbers added to the policy, then in that case the phone numbers that appear in the meeting invites of these users are defined by the default conferencing toll phone number and the default conferencing toll-free phone number in each individual user's settings.

Reference:

<https://learn.microsoft.com/en-us/microsoftteams/set-the-phone-numbers-included-on-invites-in-teams>

NEW QUESTION 145

- (Exam Topic 3)

A user uses the Microsoft Teams client on a Windows device. The user reports call failures. You need to send the Teams client logs to Microsoft support to troubleshoot the call failures.

Which three actions should you perform in sequence? To answer, move the appropriate actions from the list of actions to the answer area and arrange them in the correct order.

Actions

From Settings in the Microsoft Teams admin center, select **Enable logging for meeting diagnostics**.

From Users in the Microsoft Teams admin center, modify the Voice settings of the user.

Send the Debug logs to Microsoft support.

Right-click the Teams notification icon and select **Collect support files**.

Send the Media logs to Microsoft support.

From the Microsoft Teams admin center, locate the failed calls on the Meetings & calls tab of the user.

Answer Area

- A. Mastered
- B. Not Mastered

Answer: A

Explanation:

Actions

From Settings in the Microsoft Teams admin center, select **Enable logging for meeting diagnostics**.

From Users in the Microsoft Teams admin center, modify the Voice settings of the user.

Send the Debug logs to Microsoft support.

Right-click the Teams notification icon and select **Collect support files**.

Send the Media logs to Microsoft support.

From the Microsoft Teams admin center, locate the failed calls on the Meetings & calls tab of the user.

Answer Area

From Users in the Microsoft Teams admin center, modify the Voice settings of the user.

Right-click the Teams notification icon and select **Collect support files**.

From the Microsoft Teams admin center, locate the failed calls on the Meetings & calls tab of the user.

NEW QUESTION 148

- (Exam Topic 3)

Your company plans to use Microsoft Teams for collaboration and communication. You need to deploy Microsoft Surface Hub devices to Teams meeting rooms. Which four actions should you perform in sequence? To answer, move the appropriate actions from the list of actions to the answer area and arrange them in the correct order.

Deploy the provisioning package to Surface Hub

Install Windows Configuration Designer

Run the `Enable-CsMeetingRoom` cmdlet

Install the Windows Installation Assistant

Use the Provision Surface Hub devices wizard

Configure a Teams update policy

Save the provisioning package to a USB device

>

<

- A. Mastered
- B. Not Mastered

Answer: A

Explanation:

Step 1: Install Windows Configuration Designer
Step 2: Use the Provision Surface Hub devices wizard
Create provisioning packages for Surface Hub
Provisioning packages allow you to automate deployment of key features, helping deliver a consistent experience across all Surface Hubs in your organization. Using Windows Configuration Designer (WCD) on a separate PC, you can complete the following tasks:
Enroll in Active Directory or Azure Active Directory
Create a device administrator account
Add applications and certificates
Configure proxy settings
Configure Configuration Service Provider (CSP) settings

Overview

On a separate PC running Windows 10 or Windows 11, install Windows Configuration Designer from the Microsoft Store.
Select Provision Surface Hub devices to configure common settings using a wizard. Or select Advanced provisioning to view and configure all possible settings.
Create the provisioning package and save it to a USB drive.
Deploy the package to your Surface Hub during first-run setup, or through the Settings app. Step 3: Save the provisioning package to a USB device
Step 4: Deploy the provisioning package to Surface Hub Reference:
<https://learn.microsoft.com/en-us/surface-hub/provisioning-packages-for-surface-hub>

NEW QUESTION 153

- (Exam Topic 3)

Your company has offices in Paris and London.

You are migrating from an on-premises PBX telephony solution to a Microsoft Teams Phone deployment that uses Direct Routing. You plan to use the existing telephony earner. The new solution will provide telephony services to users in both offices.

You need to recommend a solution that is the most resistant to possible failures. The solution must ensure that calls are routed through each user's respective office.

Which two actions should you include in the recommendation? Each correct answer presents part of the solution.

NOTE: Each correct selection is worth one point

- A. Deploy one Session Border Controller (SBC) to each office
- B. Configure the SBCs as a high-availability pair.
- C. Deploy a highly available Session Border Controller (SBC) pair to each office.
- D. Configure voice routing policies for each office.
- E. Configure a single voice routing policy for all users.

Answer: AC

NEW QUESTION 154

- (Exam Topic 3)

Normalization rules are configured as shown in the following exhibit.

Normalization rules				
Normalization rules define how phone numbers expressed in various formats are to be translated. One or more normalization rules must be assigned to the dial plan and are matched from the top to bottom.				
+ Add Edit Move up Move down Delete 5 items				
✓	Rank	Name	Pattern	Translation
	1	AU-NewSouthWales-Local	^([2-9]\d{7})\$	+61251
	2	AU-TollFree	^(1[38]\d{4,8})\d*\$	+6151
	3	AU-Premium	^(19\d{4,8})\$	+6151
	4	AU-Mobile	^0([45]\d{8})\$	+6151
	5	AU-National	^0([23578]\d{8})\d*(\D+\d+)?\$	+6151

Use the drop down menus to select the answer choice that completes each statement based on the information presented in the graphic.

NOTE: Each correct selection is worth one point.

Answer Area

When dialing 70105000, the phone number will normalize to [answer choice].

▼

+61270105000

+61370105000

+6170105000

+70105000

Phone numbers that begin with 1900 will be evaluated by the [answer choice] normalization rule.

▼

AU-Mobile

AU-National

AU-Premium

AU-TollFree

- A. Mastered
- B. Not Mastered

Answer: A

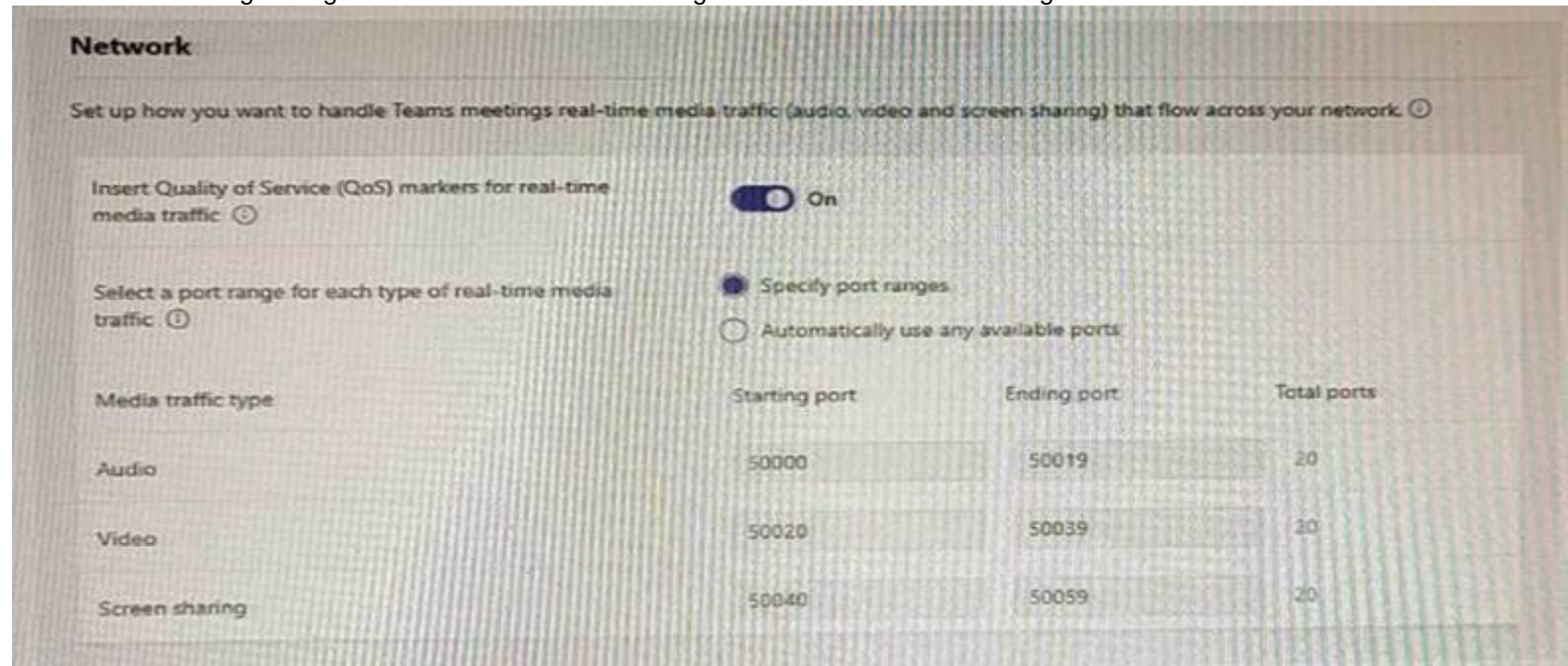
Explanation:

Box 1: +61270105000

Note:
Teams traverses the list of normalization rules from the top down and uses the first rule that matches the dialed number. If you set up a dial plan so that a dialed number can match more than one normalization rule, make sure the more restrictive rules are sorted above the less restrictive ones.
Box 2: AU-Premium Reference:
<https://learn.microsoft.com/en-us/microsoftteams/create-and-manage-dial-plans>

NEW QUESTION 156

- (Exam Topic 3)
The network meeting settings for Microsoft Teams are configured as shown in the following exhibit.



Use the drop-down menus to select the answer choice that completes each statement based on the information presented in the graphic.
NOTE: Each correct selection is worth one point.

The Teams Transport Relay service will use UDP ports [answer choice].

▼

3478 through 3481

50000 through 50019

50020 through 50039

50040 through 50050

If you set Insert Quality of Service (QoS) markers for real-time media traffic to **Off**, the Teams Transport Relay Service will use UDP port [answer choice].

▼

80

443

3478

50000

- A. Mastered
- B. Not Mastered

Answer: A

Explanation:
Graphical user interface, text, application, email Description automatically generated

NEW QUESTION 157

- (Exam Topic 3)
From Voice in the Microsoft Teams admin center, you select Operators and add an operator. You need to enable users for Microsoft Teams Phone. Which three actions should you perform in sequence? To answer, move the appropriate actions from the list of actions to the answer area and arrange them in the correct order.

Actions

Answer Area

Acquire phone numbers.

Assign phone numbers to users.

Run the `Set-CsUser` cmdlet.

Run the `New-CsOnlineNumberPortInOrder` cmdlet.

Run the `New-CsHybridTelephoneNumber` cmdlet.

Create valid emergency addresses.



- A. Mastered
- B. Not Mastered

Answer: A

Explanation:
Graphical user interface, text, application Description automatically generated
Reference:
<https://docs.microsoft.com/en-us/microsoftteams/operator-connect-configure>

NEW QUESTION 158

- (Exam Topic 3)
You have a Microsoft Teams deployment.
You have two teams that have meeting requirements as shown in the following table.

Name	Requirement
Human Resources	<ul style="list-style-type: none">5,000 attendees must be supported.All attendees must be able to ask questions.Streaming by using a Stream Encoder must be supported.
Sales	<ul style="list-style-type: none">100 attendees must be supportedThe meeting must allow attendee registration.Attendee registrations must be approved by meeting organizers.

You need to recommend which type of meeting to use for each team.
What should you recommend for each team? To answer, drag the meeting types to the correct teams Each meeting type may be used once, more than once, or not at all. You may need to drag the split bar between panes or scroll to view content.
NOTE: Each correct selection is worth one point.

Meeting types

Answer Area

Live event

Teams meeting

Virtual appointment

Webinar

Human Resources:

Sales:

- A. Mastered
- B. Not Mastered

Answer: A

Explanation:
Box 1: Live event Live events
Live events are structured meetings that enable your organization to schedule and produce events that stream to large online audiences—up to 20,000 people. With

live events, the audience interaction is a managed Q&A experience.

Note: Meetings, webinars, and live events are all types of meetings, but webinars and live events provide additional control for the organizer over the conversation and participants. Webinars provide two-way interaction while live events provide a managed Q&A experience.

The different types of meetings also have different participant limits and participant capabilities.

* Live events

Number of participants: Up to 20,000

- Broadcast to large audiences.
- Moderated Q&A for audience interaction.
- Can specify producers and presenters, including external presenters.
- Supports more advanced production capabilities. Registration supported: no

Box 2: Webinar Webinars

Webinars are structured meetings where presenters and participants have clear roles. A key difference between webinars and Teams meetings is that webinars support robust registration management, customizable event and registration site, and event-oriented default meeting options.

Note: Meetings, webinars, and live events are all types of meetings, but webinars and live events provide additional control for the organizer over the conversation and participants. Webinars provide two-way interaction while live events provide a managed Q&A experience.

The different types of meetings also have different participant limits and participant capabilities.

* Webinars

Number of participants: Up to 1,000

- Participants up to 1,000 have fully interactive capabilities.
- Audience interaction configurable.
- Can specify presenters Registration supported: yes Incorrect:

* Meetings

Number of participants: Up to 20,000

- Participants up to 1,000 have fully interactive equal meeting capabilities.
- Participants over 1,000 up to 20,000 have View-only capabilities. Registration supported: yes

Reference:

<https://learn.microsoft.com/en-us/microsoftteams/quick-start-meetings-live-events>

NEW QUESTION 163

- (Exam Topic 3)

You have a Microsoft Teams Rooms on Windows system in a local conference room. The system is NOT joined to Active Directory.

You need to ensure that the system can be managed by using RDP.

Which three actions should you perform in sequence? To answer, move the appropriate actions from the list of actions to the answer area and arrange them in the correct order.

Actions	Answer Area
Press CTRL + ALT + DELETE .	
Configure the Remote Desktop settings and sign out.	
From Settings in the Microsoft Teams Rooms app, select Windows settings .	
Select the Administrator account and enter the password.	
From Settings in the Microsoft Teams Rooms app, select the Account tab.	

- A. Mastered
- B. Not Mastered

Answer: A

Explanation:

Graphical user interface, text, application, email Description automatically generated

Configure the Remote Desktop settings and sign out

Select the Administrator account and enter the password

Press **CTRL + ALT + DELETE**

NEW QUESTION 165

- (Exam Topic 3)

Your company assigns an Office 365 E3 license to each user. All users are in France. You plan to deploy Direct Routing.

Which additional license should you assign to the users?

- A. Microsoft 365 Audio Conferencing
- B. Microsoft 365 Phone System - Virtual
- C. Microsoft 365 Phone System
- D. Microsoft 365 Domestic and International Calling Plan
- E. Microsoft 365 Domestic Calling

Answer: C

Explanation:

Reference:

<https://docs.microsoft.com/en-us/microsoftteams/direct-routing-plan>

NEW QUESTION 166

- (Exam Topic 3)

You have a global Teams Phone deployment that has local service numbers from multiple offices

You need to ensure that when the users at an office in Sydney create a Teams meeting invite, the invite displays a local conferencing number by default

What should you do?

- A. Create a new Audio Conferencing policy and assign a local service number from the Sydney office.
- B. Assign a local service number from the Sydney office to a resource account
- C. Create a new caller ID policy and assign a local service number from the Sydney office.
- D. Modify the global (org-wide default) Audio Conferencing policy and assign a local service number from the Sydney office.

Answer: A

NEW QUESTION 170

.....

THANKS FOR TRYING THE DEMO OF OUR PRODUCT

Visit Our Site to Purchase the Full Set of Actual MS-721 Exam Questions With Answers.

We Also Provide Practice Exam Software That Simulates Real Exam Environment And Has Many Self-Assessment Features. Order the MS-721 Product From:

<https://www.2passeasy.com/dumps/MS-721/>

Money Back Guarantee

MS-721 Practice Exam Features:

- * MS-721 Questions and Answers Updated Frequently
- * MS-721 Practice Questions Verified by Expert Senior Certified Staff
- * MS-721 Most Realistic Questions that Guarantee you a Pass on Your FirstTry
- * MS-721 Practice Test Questions in Multiple Choice Formats and Updatesfor 1 Year