

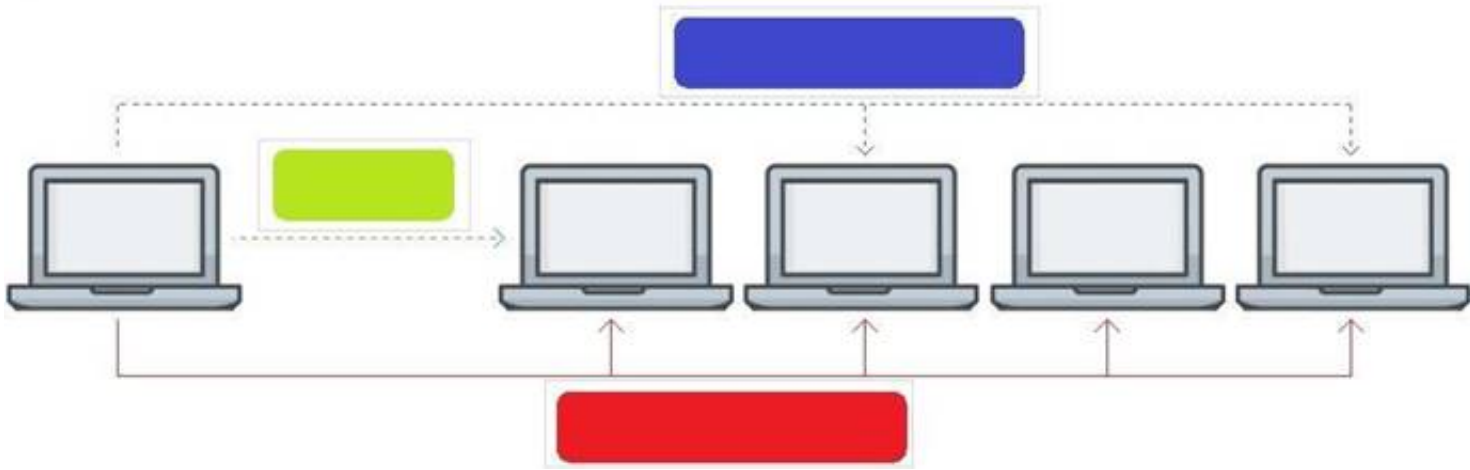
## Exam Questions HPE6-A72

Aruba Certified Switching Associate Exam

<https://www.2passeasy.com/dumps/HPE6-A72/>



**NEW QUESTION 1**  
Click on the colored box that corresponds with the line that best represents Multicast traffic flow.  
**Answer Area**



- A. Mastered
- B. Not Mastered

**Answer:** A

**Explanation:**  
Diagram Description automatically generated  
Blue Box

**NEW QUESTION 2**  
Match each network protocol to the correct default listening port and transport protocol. Not all answers will be used.

Default Port and Transport protocol		Network protocol
TCP 20, TCP 21	<input type="text"/>	<input type="text" value="DNS"/>
TCP 23	<input type="text"/>	<input type="text" value="FTP"/>
TCP 53	<input type="text"/>	<input type="text" value="HTTPS"/>
TCP 443	<input type="text"/>	<input type="text" value="Telnet"/>
UDP 20, UDP 21	<input type="text"/>	<input type="text" value="DHCP"/>
UDP 23	<input type="text"/>	
UDP 53	<input type="text"/>	
UDP 67	<input type="text"/>	

- A. Mastered
- B. Not Mastered

**Answer:** A

**Explanation:**

Default Port and Transport protocol		Network protocol
TCP 20, TCP 21	FTP	DNS
TCP 23	Telnet	FTP
TCP 53		HTTPS
TCP 443	HTTPS	Telnet
UDP 20, UDP 21		DHCP
UDP 23		
UDP 53	DNS	
UDP 67	DHCP	

### NEW QUESTION 3

What is true about VSX? (Choose two.)

- A. VSX is ideal for Campus access layer deployments where ease of deployment is needed.
- B. VSX allows upgrading members with near zero downtime or loss of packets.
- C. VSX is available on all Aruba OS-CX switches except the 6300F model.
- D. VSX is implemented on static port switch
- E. VSX-plus needed to stack chassis together.
- F. VSX run separate control planes to reduce latency and improve performance.

**Answer:** BE

### NEW QUESTION 4

What is the process where a compute device converts logical data bits into the correct physical representation depending on the media?

- A. Demodulation
- B. Modulation
- C. Propagation
- D. Encapsulation

**Answer:** D

### NEW QUESTION 5

The customer has 778 developers testing computer games on the network. Which two actions resolve Broadcast storms? (Choose two.)

- A. Manually disable the redundant link to immediately resolve the impacted portion of the network.
- B. Utilize Spanning Tree to dynamically disable all redundant links in a segment.
- C. Setting switch ports to half-duplex will resolve Broadcast storms using Carrier Sense Multiple-Access Collision Detection (CSMA/CD).
- D. Enable single Area Open Shortest Path First (OSPF) on all Layer 2 switches, but do not enable routing.
- E. Utilize Spanning Tree to dynamically block Designated ports in addition to Alternate ports.

**Answer:** AB

### NEW QUESTION 6

Which two statements are true regarding Checkpoints on Aruba switches? (Choose two.)

- A. Rolling back to a prior checkpoint triggers a reboot of the switch.
- B. Stacking switches using VSF or VSX will disable the Checkpoint feature.
- C. A checkpoint is a snapshot of the running-configuration and relevant metadata at the time the checkpoint was created.
- D. System-generated checkpoints are created after a configuration change and 5 minutes of inactivity.
- E. Checkpoints are available on AOS 5400R switches, as well as on all AOS-CX switches.

**Answer:** CE

### NEW QUESTION 7

What is the binary conversion of the hexadecimal value 0x2001?

- A. 0010 0001
- B. 0002 0000 0000 0001
- C. 0011 0000 0000 0001

D. 0010 0000 0000 0001

Answer: D

#### NEW QUESTION 8

Match the switching term to the correct definition.

Term		Definition
Broadcast Domain		defines the group of devices that are on the same network segment that are capable of receiving and responding to frames destined to FF:FF:FF:FF:FF:FF
Collision Domain		
CSMA/CD		the FIB used by switches matching known-source mac-addresses to the layer one port they are learned on
Forwarding Table		
		the mechanism used by Compute NICs and Switchports operating in half-duplex to detect and recover from frame collisions
		the segment of a network connected by a shared medium, such as a hub, that is affected when two or more frames are sent at the same time

- A. Mastered
- B. Not Mastered

Answer: A

Explanation:

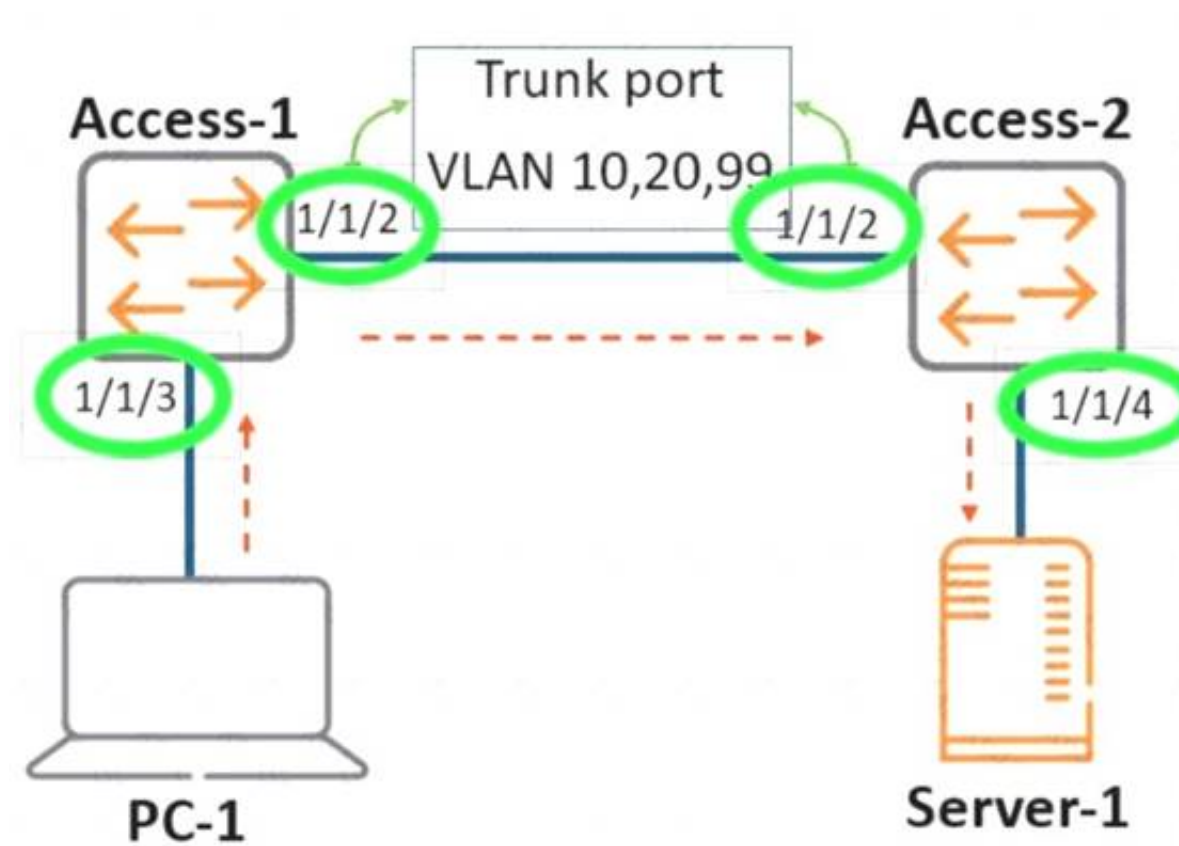
Term		Definition
Broadcast Domain	Broadcast Domain	defines the group of devices that are on the same network segment that are capable of receiving and responding to frames destined to FF:FF:FF:FF:FF:FF
Collision Domain		
CSMA/CD	Forwarding Table	the FIB used by switches matching known-source mac-addresses to the layer one port they are learned on
Forwarding Table		
	CSMA/CD	the mechanism used by Compute NICs and Switchports operating in half-duplex to detect and recover from frame collisions
	Collision Domain	the segment of a network connected by a shared medium, such as a hub, that is affected when two or more frames are sent at the same time

#### NEW QUESTION 9

Review the exhibit.

As the frame traverses from \*\*PC-1\*\* to \*\*Server-1\*\*, the VLAN tag will be removed. Click on the interface (circled in green) where the VLAN tag will be removed.





- A. Mastered
- B. Not Mastered

**Answer:** A

**Explanation:**

Diagram Description automatically generated  
 Port 1/1/4 on Access-2.

**NEW QUESTION 10**

Place the OSI Layers in the correct order. Arrange them from least to greatest, starting with Layer 1 on the top, and progressing to Layer 7 on the bottom.

OSI Layer

Order

Application Layer
Data Link Layer
Network Layer
Physical Layer
Presentation Layer
Session Layer
Transport Layer



- A. Mastered
- B. Not Mastered

**Answer:** A

**Explanation:**

Graphical user interface, application Description automatically generated

**NEW QUESTION 10**

Match the available stacking feature to the correct AOS-CX switch model. Stacking features may be used more than once.

### Stacking Feature

VSF
VSX

### Answer Area

Stacking Feature	AOS-CX Switch Model
------------------	---------------------

	6300M
	6300F
	8320
	8400
	6400

- A. Mastered  
B. Not Mastered

Answer: A

Explanation:

### Stacking Feature

VSF
VSX

### Answer Area

Stacking Feature	AOS-CX Switch Model
------------------	---------------------

VSF	6300M
VSF	6300F
VSX	8320
VSX	8400
VSX	6400

#### NEW QUESTION 11

Interface 1/1/1 is up  
Admin state is up  
Link transitions: 1  
Description: TO\_PC-1  
Hardware: Ethernet, MAC Address: 00:11:22:33:44:55  
MTU 1500  
Type 1GbT  
Full-duplex qos trust none  
Speed 1000 Mb/s  
Auto-negotiation is on Flow-control: off Error-control: off MDI mode: MDIX VLAN Mode: access Access VLAN: 1111  
Which command will produce the above output?

- A. show interface vlan 1111  
B. show interface 1/1/1  
C. show interface gigabit 1/1/1  
D. show vlan 1111

Answer: B

#### NEW QUESTION 15

What are two methods for remotely managing an Aruba AOS-CX switch? (Choose two.)

- A. SNMPv2c  
B. HTTPS  
C. USB-C console  
D. Telnet  
E. SSH

Answer: BE

#### NEW QUESTION 16

Which two types of routes can be found in the IP routing table of an Aruba AOS-CX switch? (Choose two.)

- A. Local
- B. EIGRP
- C. BGP
- D. ISIS
- E. RIPvng

**Answer:** AC

#### NEW QUESTION 18

Match each description to the correct term.

Term	Description
ASIC	<input type="text"/> receives and sends frames by using Application-Specific Integrated Circuits (ASICs)
Control Plane	<input type="text"/>
Data Plane	<input type="text"/> switches packets faster than using software
Management Plane	<input type="text"/> determines packet forwarding using routing, switching, security, and flow optimization
	<input type="text"/> handles switch monitoring

- A. Mastered
- B. Not Mastered

**Answer:** A

**Explanation:**

Term	Description
ASIC	<input type="text"/> receives and sends frames by using Application-Specific Integrated Circuits (ASICs)
Control Plane	<input type="text"/>
Data Plane	<input type="text"/> switches packets faster than using software
Management Plane	<input type="text"/> determines packet forwarding using routing, switching, security, and flow optimization
	<input type="text"/> handles switch monitoring

#### NEW QUESTION 21

You need to remote into an AOS-CX switch using SSH in order to update the management IP address for future connections. Unfortunately, you mis-configured the IP address and are now locked out of the switch.

What command could you have issued before making changes that would have recovered the original switch configuration after ten minutes?

- A. checkpoint rollback 10
- B. checkpoint auto 10
- C. checkpoint auto confirm 10
- D. boot system secondary 10

**Answer:** B

#### NEW QUESTION 23

Refer to the exhibit.

```
SW1# show vlan
```

VLAN	Name	Status	Reason	Type	Interfaces
1	DEFAULT_VLAN_1	up	ok	default	<output omitted>
10	Engineering	up	ok	static	1/1/1-1/1/7
20	Guest	up	ok	static	1/1/11-1/1/14

The above command was applied to an Aruba AOS-CX 6300M 24-port switch with 4-port SFP56 uplinks. All ports are set as access switchports. Which ports carry VLAN 1 traffic?

- A. 1/1/8, 1/1/10, 1/1/5-1/1/24
- B. 1/1/1-1/1/28
- C. 1/1/1-1/1/24
- D. 1/1/8-1/1/10, 1/1/5-1/1/28

Answer: D

NEW QUESTION 26

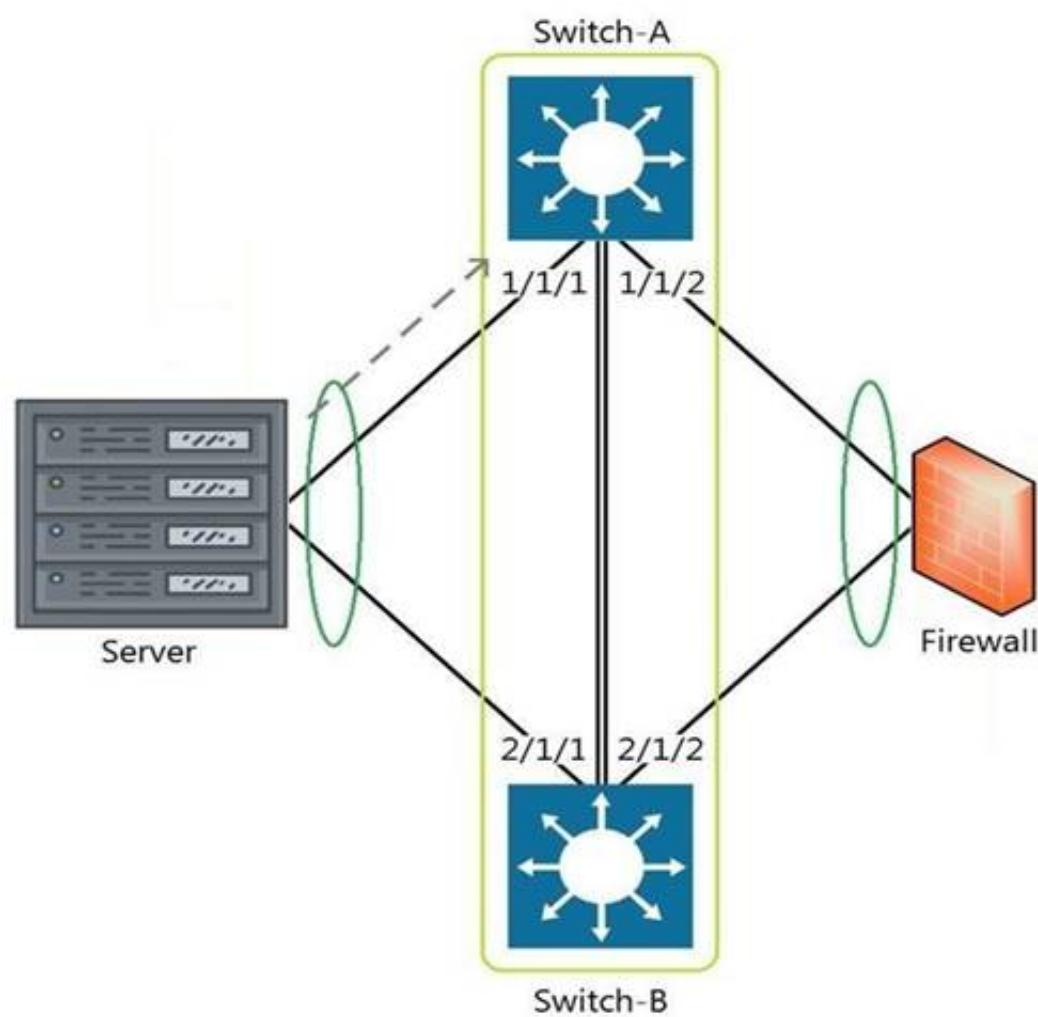
What are two OSPF attributes within the hello messages that must match to successfully establish neighbor relationships? (Choose two.)

- A. Router ID
- B. Priority
- C. Hello and Dead intervals
- D. Area ID
- E. Process ID

Answer: CD

NEW QUESTION 30

Refer to the exhibit.



The above scenario shows a packet from the Server destined for the Firewall. Switch-A and Switch-B are bundled as VSF stack. The LAG between the VSF stack and the firewall indicates a hash function to forward the packet on port 2/1/2. Which statement is true regarding how Switch-A will forward the packet?

- A. Switch-A will forward the packet on port 1/1/2. VSF will override the typical LAG hash function used for the physical interface selection.
- B. Switch-A will drop the packe
- C. Multi-Chassis lag to multi-chassis lag is not a supported feature of VSF.
- D. Switch-A will encapsulate the packet using GRE to forward to Switch-B in order for the packet to egress on port 2/1/2 per the hash function.
- E. Switch-A will forward the packet along the VSF link to Switch-B so that it will egress on port 2/1/2 per the hash function.

Answer: D

NEW QUESTION 32

Which field in the IPv4 header indicates whether the IP packet carries TCP or UDP traffic?

- A. Protocol
- B. IHL
- C. TTL
- D. Identification

Answer: A

NEW QUESTION 35

Refer to the exhibit.

VLAN	Name	Mode	Mapping
1	DEFAULT_VLAN_1	native-untagged	port
10	Sales	trunk	port
20	Service	trunk	port
30	Customer	trunk	port

Which command produces the above output?



- A. show interface port 1/1/10 trunk
- B. show vlan port 1/1/10
- C. show trunk port 1/1/10 extended
- D. show interface port 1/1/10 switchport

**Answer:** C

#### NEW QUESTION 37

Which switches support Aruba Virtual Switching Extension (VSX)? (Choose two.)

- A. Aruba 6405
- B. Aruba 2930F
- C. Aruba 8400
- D. Aruba 5406R
- E. Aruba 8350

**Answer:** AC

#### NEW QUESTION 41

Refer to the exhibit.

watchlog/3	0	0	0
dbus-daemon	0	0	15
intfd	0	0	11
ext4-rsv-conver	0	0	0
scsi_eh_6	0	0	0
cpuhp/3	0	0	0
kworker/4:0	0	0	0
scsi_tmf_4	0	0	0
kworker/5:1H	0	0	0
smartd	0	0	3
fault-handler	0	0	10
btd	0	0	12
portd	0	0	12
migration/4	0	0	0
scsi_tmf_1	0	0	0
kworker/2:0H	0	0	0
kauditd	0	0	0
rmond	0	0	9
certmgr	0	0	13
icmp6_unreachab	0	0	0
Core-1#			

The above output is the result of issuing the command show system resource-utilization. What command should be used to enable terminal output line by line or page by page?

- A. The command page
- B. The command terminal length 30
- C. The command more
- D. The command less

**Answer:** A

#### NEW QUESTION 43

What are two primary concerns regarding layer two loops in a redundant topology? (Choose two.)

- A. routing loops
- B. costs associated with upgrading from copper to fiber
- C. multiple frame copies leading to instability of the MAC address table
- D. security issues with a redundant loop indicating to hackers that a back-door exists
- E. broadcast storms

**Answer:** CD

#### NEW QUESTION 46

What are two available options as part of a DHCP offer message? (Choose two.)

- A. SSID
- B. DNS server IP
- C. Subnet Mask

- D. LLDP-MED
- E. VLANID

**Answer:** BC

#### NEW QUESTION 48

Refer to the exhibit.

```
Core-1# show interface mgmt
  Address Mode           : static
  Admin State           : up
  Mac Address           : 90:20:c2:bc:8e:01
  IPv4 address/subnet-mask : 10.1.1.1/24
  Default gateway IPv4   : 10.1.1.254
  IPv6 address/prefix    :
  IPv6 link local address/prefix:
  Default gateway IPv6   :
  Primary Nameserver     : 10.254.1.21
  Secondary Nameserver   :
Core-1# ping 10.1.1.254
connect: Network is unreachable
Core-1#
```

What change on Core-1 will result in a successful ping to 10.1.1.254 from the management interface?

- A. Use the command ping 10.1.1.254 vrf mgmt
- B. Use the command ping 10.1.1.254/24
- C. Change the Core-1 management address to 10.1.1.1/25 first
- D. The destination 10.1.1.254 requires configuring a static route

**Answer:** A

#### NEW QUESTION 50

What are the commands to disable SSH and HTTPS services from the default VRF?

- A. Core-1(config)# no ssh server Core-1(config)# no https-server
- B. Core-1# no ssh server vrf default Core-1# no https-server vrf default
- C. Core-1(config)# no ssh server enable Core-1(config)# no https-server enable
- D. Core-1(config)# no ssh server vrf default Core-1(config)# no https-server vrf default

**Answer:** D

#### NEW QUESTION 53

Which command will suppress LLDP messages from egressing on a given port while still allowing LLDP to be enabled on the switch?

- A. switch(config-if)# no lldp interface (port) transmit
- B. switch(config-if)# no lldp transmit
- C. switch(config-if)# no lldp receive
- D. switch(config)# no lldp

**Answer:** B

#### NEW QUESTION 56

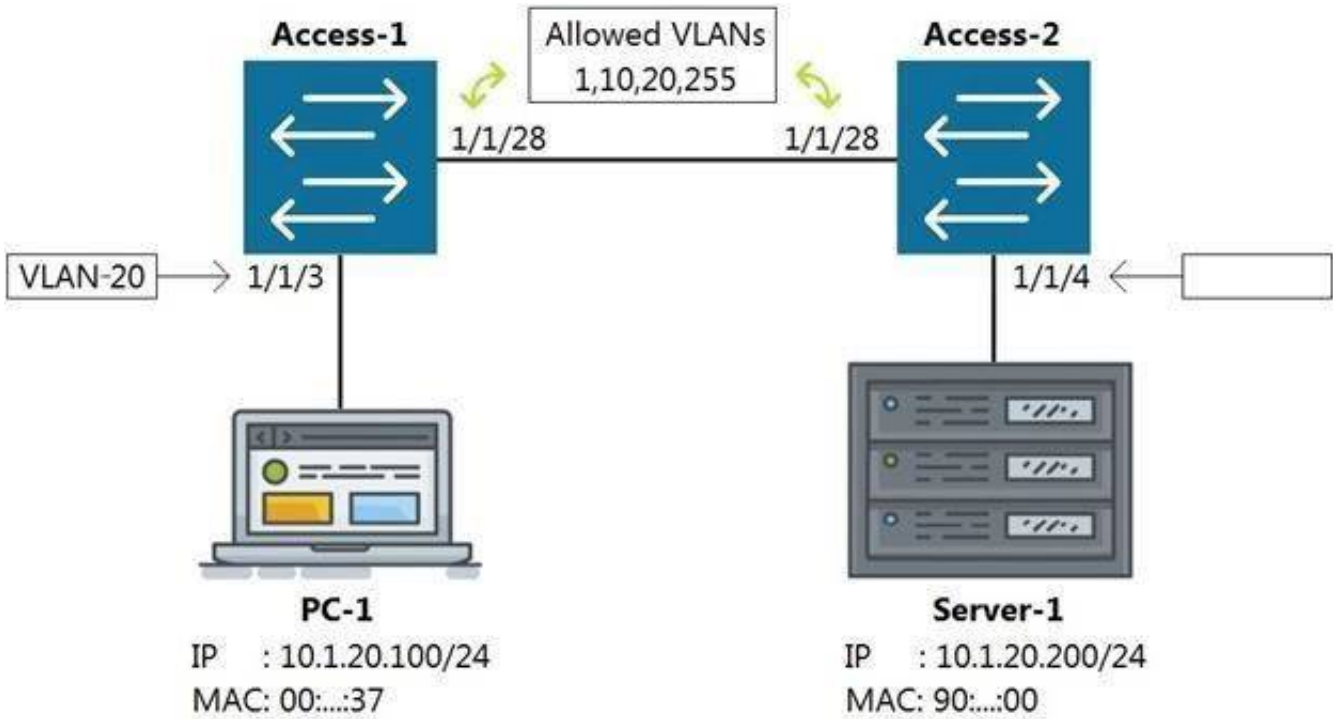
What is a benefit of choosing a 3-Tier design with routing at the Aggregation layer?

- A. Better Core router performance by offloading processing
- B. Shifting endpoint access to the Aggregation layer from the Access layer
- C. Using access control lists (ACLs) at the Core to improve performance
- D. Connecting WAN/MPLS and Data center access to the Aggregation layer

**Answer:** A

#### NEW QUESTION 60

Refer to the exhibit



Which command on Access-2 port 1/1/4 will enable connectivity between PC-1 and Server-1 without any routing enabled in the network?

- A. Access-2 (config-if-1/1/4)# vlan access 1, 10, 20, 255
- B. Access-2 (config-if-1/1/4)# vlan access 20
- C. Access-2 (config-if-1/1/4)# vlan 20 untag 1/1/4
- D. Access-2 (config-if-1/1/4)# vlan trunk allow 1, 10, 255

Answer: B

NEW QUESTION 65

Match each description to the correct management tool for Aruba AOS-CX.

Management Tools	Answer Area	
NetEdit	Management Tool	Description
Aruba CX Mobile App		can run as an OVA
		requires AOS-CX switches to support HTTPS, SSH, and REST access
		connects to switches via Bluetooth or Wi-Fi
		includes a feature for stacking automation
		supports SNMPv2c to discover third-party devices

- A. Mastered
- B. Not Mastered

Answer: A

Explanation:

Management Tools	Answer Area	
NetEdit	Management Tool	Description
Aruba CX Mobile App	NetEdit	can run as an OVA
	NetEdit	requires AOS-CX switches to support HTTPS, SSH, and REST access
	Aruba CX Mobile App	connects to switches via Bluetooth or Wi-Fi
	Aruba CX Mobile App	includes a feature for stacking automation
	NetEdit	supports SNMPv2c to discover third-party devices

NEW QUESTION 67

Refer to the exhibit.



You are in the process of configuring VSF between Access-1 and Access-2. Access-1 has been configured as the VSF Master. What is a valid configuration for Access-2 to join the VSF stack?

- A. Access-2# configureAccess-2(config)# vsf member 1 Access-2(config)# vsf renumber-to 2 Access-2(vsf-member-1)# link 2 2/1/28 Access-2(vsf-member-1)# exitThis will save the VSF configuration and reboot the switc

- B. Do you want to continue (y/n)? y  
C. Access-2# configureAccess-2(config)# vsf member 2 Access-2(vsf-member-1)# link 2 1/1/28 Access-2(vsf-member-1)# exit This will save the VSF configuration and reboot the switc  
D. Do you want to continue (y/n)? y  
E. Access-2# configureAccess-2(config)# vsf member 2 Access-2(vsf-member-1)# link 1 1/1/28 Access-2(vsf-member-1)# exit This will save the VSF configuration and reboot the switc  
F. Do you want to continue (y/n)? y  
G. Access-2# configureAccess-2(config)# vsf member 1 Access-2(vsf-member-1)# link 1 1/1/28 Access-2(vsf-member-1)# exit Access-2(config)# vsf renumber-to 2This will save the VSF configuration and reboot the switc  
H. Do you want to continue (y/n)? y

**Answer:** C

#### NEW QUESTION 72

What command displays information regarding the secondary image installed on an AOS-CX switch?

- A. show secondary  
B. show version detail  
C. show version  
D. show images

**Answer:** D

#### NEW QUESTION 77

What are two mechanisms supported on AOS-CX 6300 switches used in Multi-active Detection to determine the status of the Primary member? (Choose two.)

- A. Management interface split detection  
B. Peer switch-based detection  
C. Loopback keepalives  
D. ARP-based  
E. BFD

**Answer:** AD

#### NEW QUESTION 82

Aruba Access Points tunnel traffic in a campus to the Mobility Controller using which protocol?

- A. Control and Provisioning of Wireless Access Points (CAPWAP)  
B. Generic Routing Encapsulation (GRE)  
C. Lightweight Access Point Protocol (LWAPP)  
D. Process Application Programming Interface (PAPI)

**Answer:** B

#### NEW QUESTION 83

Which security benefit does SNMPv3 offer that SNMPv2 does not offer?

- A. SSL encryption  
B. Scopes  
C. Data confidentiality  
D. RADIUS groups

**Answer:** C

#### NEW QUESTION 85

Refer to the exhibit

```
Access-1(config)# show vlan
```

VLAN	Name	Status	Reason	Type	Interfaces
1	DEFAULT_VLAN_1	up	ok	default	1/1/1-1/1/28
50	Engineering	down	no_member_port	static	

What is true regarding VLAN 50 according to the diagram above?

- A. VLAN 50 is part of a switched virtual interface (SVI) that was never routed causing it to be down.  
B. Since VLAN 50 has not been assigned to any enabled physical port, the status is down.  
C. VLAN 50 is assigned only to Trunk ports which is why no ports are listed under interfaces.  
D. VLAN 50 was never added to the vlan-database and therefore is in a down state.

**Answer:** B

#### NEW QUESTION 86

What command will save your configuration on an Aruba AOS-CX switch so that your changes automatically load on next reboot?

- A. copy running-config checkpoint startup-config



- B. copy startup-config running-config
- C. copy running-config initial-checkpoint
- D. copy running-config default

**Answer:** A

#### NEW QUESTION 91

Which Ethernet port combination does the Aruba 5400R ZL2 switch series support?

- A. 10/100 Megabit Ethernet, Gigabit Ethernet, and 100 Gigabit Ethernet
- B. Gigabit Ethernet, 25 Gigabit Ethernet, and 40 Gigabit Ethernet
- C. 10/100 Megabit Ethernet, Gigabit Ethernet, 25 Gigabit Ethernet, and 100 Gigabit Ethernet
- D. 10/100 Megabit Ethernet, Gigabit Ethernet, and 40 Gigabit Ethernet

**Answer:** D

#### NEW QUESTION 96

What is Deep Packet Inspection?

- A. a machine learning method of packet inspection for the purpose of choosing which dynamic routing protocol to automatically assign
- B. a concept that applies to firewalls, when examining packets only up through Layer 4
- C. a function of Policy Based Routing that examines the entire IPv4 header to forward traffic based on factors other than destination address
- D. a firewall process of examining the packet header all the way to Layer 7 in order to determine if the packet should be permitted or denied

**Answer:** D

#### NEW QUESTION 98

Which two statements accurately describe stacking with Aruba switches? (Choose two.)

- A. A VSF stack is allowed between an AOS-CX 6300M and 6300F switches.
- B. VSF is a core or aggregation layer stacking technology due to the high resiliency of sharing a single control plane.
- C. The VSF feature is not compatible between AOS-CX and AOS platforms.
- D. A VSF stack is allowed between an AOS 5400R and an AOS-CX 6400.
- E. VSF and VSX are stacking option with the AOS-CX 8320. 8325. 8400. and 6400 models.

**Answer:** BE

#### NEW QUESTION 99

You have completed a successful VSF stack between two switches.

Without manually assigning a backup switch, what is the expected output when issuing a show vsf command?

A. T1-6300-A# show vsf  
<omitted>  
Mbr Mac Address type Status ID  
-----  
1 88:3a:30:a3:e5:40 JL660A Commander  
2 88:3a:30:a6:d9:80 JL660A Secondary

B. T1-6300-A# show vsf  
<omitted>  
Mbr Mac Address type Status ID  
-----  
1 88:3a:30:a3:e5:40 JL660A Primary  
2 88:3a:30:a6:d9:80 JL660A Secondary

C. T1-6300-A# show vsf

<omitted>

Mbr	Mac Address	type	Status	ID
1	88:3a:30:a3:e5:40	JL660A	Master	
2	88:3a:30:a6:d9:80	JL660A	Member	

D. T1-6300-A# show vsf

<omitted>

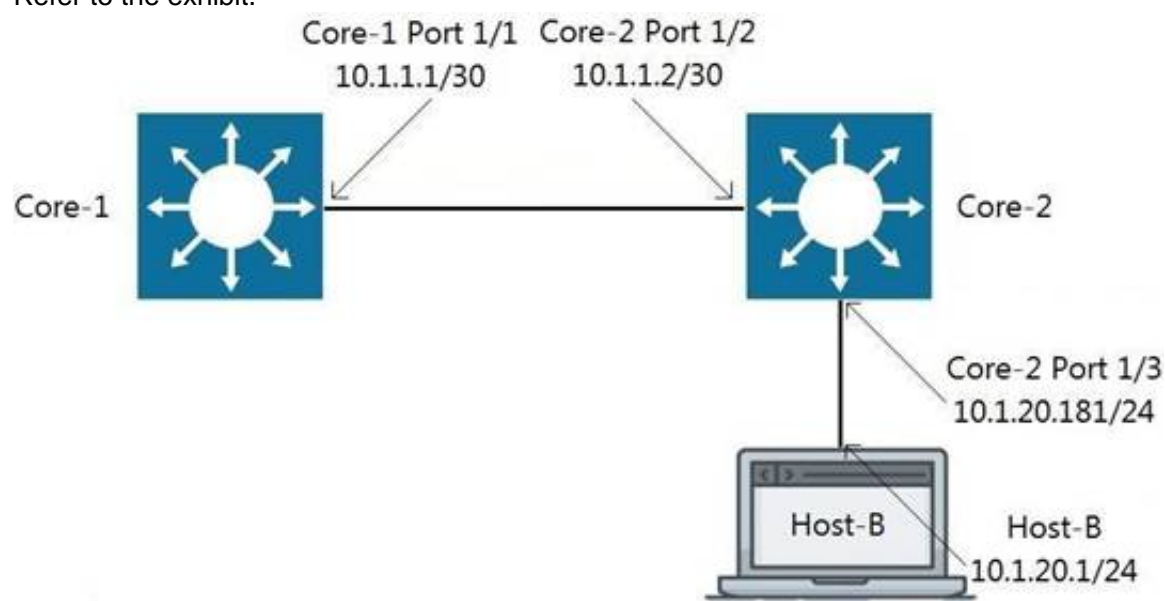
Mbr	Mac Address	type	Status	ID
1	88:3a:30:a3:e5:40	JL660A	Master	
2	88:3a:30:a6:d9:80	JL660A	Standby	

- A. Option A
- B. Option B
- C. Option C
- D. Option D

Answer: D

#### NEW QUESTION 102

Refer to the exhibit.



Traffic is failing between Core-1 and Host-B. IP addressing has correctly been applied, and all interfaces are attached to the vrf GREEN. Which configuration will correct the issue?

- A. Core-2(config)# ip route 0.0.0.0/0 10.1.1.1 vrf GREEN Host-B: assign the default-gateway address 10.1.20.181
- B. Core-1(config)# ip route 10.1.20.0/24 10.1.1.2 vrf GREEN Host-B: assign the default-gateway address 10.1.20.181
- C. Core-1(config)# ip route 10.1.20.0/24 10.1.1.2 vrf GREEN Host-B: assign the default-gateway address 10.1.20.1
- D. Host-B: assign the default-gateway address 10.1.20.181

Answer: B

#### NEW QUESTION 103

.....

## THANKS FOR TRYING THE DEMO OF OUR PRODUCT

Visit Our Site to Purchase the Full Set of Actual HPE6-A72 Exam Questions With Answers.

We Also Provide Practice Exam Software That Simulates Real Exam Environment And Has Many Self-Assessment Features. Order the HPE6-A72 Product From:

<https://www.2passeasy.com/dumps/HPE6-A72/>

## Money Back Guarantee

### HPE6-A72 Practice Exam Features:

- \* HPE6-A72 Questions and Answers Updated Frequently
- \* HPE6-A72 Practice Questions Verified by Expert Senior Certified Staff
- \* HPE6-A72 Most Realistic Questions that Guarantee you a Pass on Your FirstTry
- \* HPE6-A72 Practice Test Questions in Multiple Choice Formats and Updatesfor 1 Year