



Microsoft

Exam Questions mb-300

Microsoft Dynamics 365 Unified Operations Core

About ExamBible

[Your Partner of IT Exam](#)

Found in 1998

ExamBible is a company specialized on providing high quality IT exam practice study materials, especially Cisco CCNA, CCDA, CCNP, CCIE, Checkpoint CCSE, CompTIA A+, Network+ certification practice exams and so on. We guarantee that the candidates will not only pass any IT exam at the first attempt but also get profound understanding about the certificates they have got. There are so many alike companies in this industry, however, ExamBible has its unique advantages that other companies could not achieve.

Our Advances

* 99.9% Uptime

All examinations will be up to date.

* 24/7 Quality Support

We will provide service round the clock.

* 100% Pass Rate

Our guarantee that you will pass the exam.

* Unique Gurantee

If you do not pass the exam at the first time, we will not only arrange FULL REFUND for you, but also provide you another exam of your claim, ABSOLUTELY FREE!

NEW QUESTION 1

- (Exam Topic 1)

You need to detail a business process for streaming the customer editing process for account representatives. Which two actions should you perform? Each correct answer presents a partial solution.

NOTE: Each correct selection is worth one point.

- A. Navigate to the All Customer form for the Accounts receivable module and select the appropriate customer account.
- B. Navigate to the account representative's workspace and select the appropriate customer account.
- C. Select the form and then select Hide.
- D. Hide Invoice account from the view.

Answer: AD

NEW QUESTION 2

- (Exam Topic 1)

You need to configure check printing for Munson's.

Which four actions should you perform in sequence? To answer, move the appropriate actions from the list of actions to the answer area and arrange them in the correct order.

Actions

Install the Document Routing Agent on the client machines where users will be printing the checks.

Navigate to the legal entity and enable the printer.

Select the legal entities for the printer to be available.

Discover and add the check printer from the Document Routing Agent.

Enter the Dynamics 365 Finance and Operations configurations in the Document Routing Agent.

Discover and add the check printer to the system from Dynamics 365 Finance and Operations.

Install the Document Routing Agent on the corporate print server.

Register the Document Routing Agent with Dynamics 365 Finance and Operations.

Answer Area

⏪

⏩

⬆

⬇

- A. Mastered
- B. Not Mastered

Answer: A

Explanation:

Reference:

<https://docs.microsoft.com/en-us/dynamics365/unified-operations/dev-itpro/analytics/install-document-routing-a>

NEW QUESTION 3

- (Exam Topic 1)

You need to determine why the sales associate is not able to see Munson's in the search results. What is the cause of the issue?

- A. The search criteria is searching for only names that are exactly 'pickles'.
- B. The search criteria is only able to search by the shortened search name of the customer.
- C. The search criteria is searching for all customer names that start with 'pickles'.
- D. The search criteria is case sensitive.

Answer: C

Explanation:

Reference:

<https://docs.microsoft.com/en-us/dynamics365/customer-engagement/basics/search-records>

NEW QUESTION 4

- (Exam Topic 2)

You are a Dynamics 365 for Finance and Operations system administrator.

You use Lifecycle Services (LCS) for your deployment. The company currently has multiple methodologies assigned to various projects. One methodology is incorrectly assigned and must be changed.

You need to change the methodology on an existing project.

Which two options can you use? Each correct answer presents a complete solution. NOTE: Each correct selection is worth one point.

- A. Change methodology
- B. Project settings
- C. Manage methodologies
- D. Edit methodology

Answer: AC

NEW QUESTION 5

- (Exam Topic 2)

You are a Dynamics 365 for Finance and Operations system administrator.

Data is being migrated from a customized version of a legacy application to Dynamics 365 for Finance and Operations. Some of the fields in the entity are the same, and some are different.

As a starting point, you need to automatically map as many fields as possible within Dynamics 365 for Finance and Operations.

Which feature or tool should you use?

- A. Use the Mapping visualization tool
- B. Generate source mapping
- C. Use the Data task automation tool
- D. Copy configuration data
- E. Use Data templates

Answer: A

Explanation:

References:

<https://docs.microsoft.com/en-us/dynamics365/unified-operations/dev-itpro/data-entities/data-entities-data-pack>

NEW QUESTION 6

- (Exam Topic 2)

You are a Dynamics 365 for Finance and Operations system administrator. You have production and testing environments. You move the workflow from the testing environment to the production environment.

The workflow in the production environment is stuck in a wait state.

You need to resolve the issue with the workflow in the production environment. What should you do?

- A. Set the workflow batch job to critical
- B. Set the workflow messaging batch job group
- C. Grant the user workflow permissions
- D. Set the workflow execution account in the workflow parameters

Answer: D

NEW QUESTION 7

- (Exam Topic 2)

You plan the migration from Dynamics AX 2009 to a Dynamics 365 for Finance and Operations environment. You will be moving data.

You need to create a data package from a group of entities in Dynamics AX 2009. What should you use?

- A. Upgrade analyzer
- B. Code upgrade estimation tools
- C. Dynamics AX 2009 Data migration tool (DMT)
- D. Data Import/Export Framework (DIXF)

Answer: D

Explanation:

References:

<https://docs.microsoft.com/en-us/dynamics365/unified-operations/dev-itpro/migration-upgrade/ax2009-upgrade-export-package>

NEW QUESTION 8

- (Exam Topic 2)

A company implements Dynamics 365 for Finance and Operations.

They need additional information and want a subledger to record information for additional reporting rather than customizing all reports.

You need to set up the posting to accommodate the need for a subledger. Which three actions should you take? Each answer presents part of the solution.

- A. Update existing reports to prevent data in the identified area from reporting
- B. Create posting profiles to post to the identified area as needed for the request
- C. Create posting definitions to post to the identified area as needed for the request
- D. Update existing reports to add data in the identified area
- E. Identify an area of the chart of accounts to record to as the subledger

Answer: BDE

NEW QUESTION 9

- (Exam Topic 2)

You are a Dynamics 365 for Finance and Operations system administrator.

A company named Contoso Ltd. is creating a new legal entity that will be similar to an existing legal entity. Team members copy key entities to the new legal entity using the Data management workspace. They indicate that there were already-configured pieces of data unique to the new legal entity before they ran the Copy into legal entity process.

The data import/export framework settings are listed in the table below:

Setting	Current value
Ignore error	Yes
Create error file	Yes
Remove duplicates	Yes

You need to determine what happened to the already-configured pieces of data. What happened to the data?

- A. Any source legal entity data that already exists in the destination legal entity will be updated.
- B. Any destination legal entity data will be deleted, and the source data will be inserted.
- C. Any source legal entity data that already exists in the destination legal entity will be ignored.
- D. Any source legal entity data that already exists in the destination legal entity will be displayed as an error for user action in the Data management workspace.

Answer: C

NEW QUESTION 10

- (Exam Topic 2)

You develop a new purchasing solution for a Dynamics 365 for Finance and Operations environment. You must provide functional test passes for the purchasing solution.

You need to plan a production environment test flow for the purchasing solution. What three steps should you verify in the functional passes of the purchasing solution?

- A. Purchase orders are generated
- B. Item requirements are present
- C. Production order processing occurs
- D. Production orders are generated
- E. The item master is designed and released to a legal entity

Answer: ABE

NEW QUESTION 10

- (Exam Topic 2)

You plan the migration from a Dynamics AX 2012 to a Dynamics 365 for Finance and Operations environment.

You are tasked with overseeing and planning a cutover to guarantee a smooth experience for end users during the cutover. You perform a basic data upgrade validation.

You need to perform a cutover.

Which three tasks must you perform? Each correct answer presents part of the solution. NOTE: Each correct selection is worth one point.

- A. Perform a smoke test.
- B. Copy the upgraded database from the sandbox environment into the production environment.
- C. Complete application setup tasks.
- D. Ensure that Synchronous transfer mode is enabled
- E. Enable the Microsoft Power BI AppSource content packs for Cost management, Financial performance, and Retail channel performance.

Answer: BCE

NEW QUESTION 13

- (Exam Topic 2)

Note: This question is part of a series of questions that present the same scenario. Each question in the series contains a unique solution that might meet the stated goals. Some question sets might have more than one correct solution, while others might not have a correct solution.

After you answer a question in this section, you will NOT be able to return to it. As a result, these questions will not appear in the review screen.

You are a functional consultant who is deploying Dynamics 365 for Finance and Operations. The implementation must:

- ☒ Use an iterative approach
- ☒ Integrate with real-world data
- ☒ Enforce standards and governance
- ☒ Implement multiple rounds of feedback

You need to deploy and validate the implementation.

Solution: Use the XPPBP tool to export customizations and scenarios from a development sandbox. Make changes to the sandbox containing users. Deploy from the sandbox to the production environment.

Does the solution meet the goal?

- A. Yes
- B. No

Answer: B

NEW QUESTION 17

- (Exam Topic 2)

You are responsible for regulatory compliance for a Dynamics 365 for Finance and Operations environment. You need to be able to search for the regulatory features of Dynamics 365 for Finance and Operations.
What should you use?

- A. Intelligent Data Management Framework (IDMF)
- B. System diagnostics
- C. Application Object Tree (AOT)
- D. Issue search

Answer: D

Explanation:

References:

<https://docs.microsoft.com/en-us/dynamics365/unified-operations/dev-itpro/lifecycle-services/issue-search-lcs>

NEW QUESTION 20

- (Exam Topic 2)

You are a Dynamics 365 for Finance and Operations systems administrator.

Your company needs to document and test all possible scenarios for a given implementation. Implementation gaps need to be documented using the tool available for tracking and linking to delivered extensions.

You need to identify the correct tool to accomplish this. What should you use?

- A. APQC Unified Libraries
- B. Shared asset library
- C. Business process modeler (BPM)
- D. Microsoft Azure DevOps

Answer: C

NEW QUESTION 24

- (Exam Topic 2)

You are a Dynamics 365 for Finance and Operations system administrator.

The expense department relies heavily on properly operating workflows. If there is a failure in the workflow, the issue needs to get resolved quickly.

You need to make sure that the system actively tracks the status, so the support team can monitor and take actions against any failures.

What should you do? Each correct answer presents a complete solution.

NOTE: Each correct selection is worth one point.

- A. Set the monitoring category of the Workflow message processing batch job to Workflow.
- B. Set the critical job flag of the Workflow message processing batch job to True.
- C. Set the Ignore task failure flag of the Workflow message processing batch job to False.
- D. Set the batch job named Workflow message processing to send an email when the status of the batch job is Error.
- E. Set the priority field of the Workflow message processing batch job to 1.

Answer: BCD

NEW QUESTION 28

- (Exam Topic 2)

A company implements Dynamics 365 for Finance and Operations. It sets up and configures the system to support reporting requirements using Microsoft Power BI.

The customer service manager wants to create reports in Power BI for analyzing customer order patterns, order fulfillment metrics, customer satisfaction KPIs, and customer service representative goal metrics. These reports compare aggregated information across multiple demographic regions and business lines for current trends against historic information.

The manager would like to use the reports to make individual team performance more visible to the managerial and executive teams. Since reports will be used by those teams as well as mobile users, the manager would like the report response to reflect the latest data without requiring the user to wait.

You need to determine which tool or functionality best fits the scenario.

Which feature or functionality should you use? To answer, select the appropriate feature or functionality in the dialog box in the answer area.

NOTE: Each correct selection is worth one point

Answer Area

Scenario	Feature or functionality
Stage the aggregate data for use by the reports.	Dynamics 365 system administration settings Power BI desktop client Lifecycle Services
Set the data source to use DirectQuery.	Dynamics 365 system administration settings Power BI desktop client Lifecycle Services
Publish the new reports to the production environment.	Dynamics 365 system administration settings Power BI desktop client Lifecycle Services
Configure the data refresh rate for periodic updating.	Dynamics 365 system administration settings Power BI desktop client Lifecycle Services

- A. Mastered
- B. Not Mastered

Answer: A

Explanation:

Answer Area

Scenario	Feature or functionality
Stage the aggregate data for use by the reports.	Dynamics 365 system administration settings Power BI desktop client Lifecycle Services
Set the data source to use DirectQuery.	Dynamics 365 system administration settings Power BI desktop client Lifecycle Services
Publish the new reports to the production environment.	Dynamics 365 system administration settings Power BI desktop client Lifecycle Services
Configure the data refresh rate for periodic updating.	Dynamics 365 system administration settings Power BI desktop client Lifecycle Services

NEW QUESTION 30

- (Exam Topic 2)

During the implementation planning process, a company decides to migrate various functional data from its legacy systems. These include accounting data, sales data, and purchasing data.

Some functional data elements reference data stored in other tables.

You need to ensure that data types and data elements are imported in the correct order.

In what order should you perform the data migration? To answer, select the appropriate configuration in the answer area.

NOTE: Each correct selection is worth one point.

Answer Area

Sequential order

Order options

Data category

Master, reference, transaction
Reference, master, transaction
Transaction, reference, master
Transaction, master, reference

Data entity

Ledger journals, chart of accounts, account structures
Chart of accounts, account structures, ledger journals
Account structures, chart of accounts, ledger journals
Ledger journals, account structures, chart of accounts

- A. Mastered
B. Not Mastered

Answer: A

Explanation:

Answer Area

Sequential order

Order options

Data category

Master, reference, transaction
Reference, master, transaction
Transaction, reference, master
Transaction, master, reference

Data entity

Ledger journals, chart of accounts, account structures
Chart of accounts, account structures, ledger journals
Account structures, chart of accounts, ledger journals
Ledger journals, account structures, chart of accounts

NEW QUESTION 33

- (Exam Topic 2)

A multinational company plans to implement centralized procurement using purchase requisition workflows. Multiple workflows must be of the same type. Each region must use its own purchase requisition workflow. You need to implement the workflows.

What should you do?

- A. Configure Instructions for users
B. Configure the workflow owner
C. Configure automated tasks
D. Configure manual tasks
E. Add a condition for running the workflow

Answer: E

NEW QUESTION 34

- (Exam Topic 2)

You are a Dynamics 365 for Finance and Operations system administrator for a new implementation. You have a solution that needs to be tested using User Acceptance Testing (UAT). You have created a Business process modeler (BPM) library.

You need to validate and support the solution.

Which three actions should you perform? Each answer presents part of the solution.

- A. Upload the saved recording to BPM.
B. Create a new Business process library
C. Export the task recording to Microsoft Word and upload it to BPM.
D. Record test cases and save them to BPM.
E. Create and save a new task recording.

Answer: ABD

NEW QUESTION 36

- (Exam Topic 2)

You set up security roles for the users in a company. You must use standard security roles when possible. You need to identify the standard security roles.

Which of the following can you assign to a user as a standard security role?

- A. Leasing manager
- B. System engineer
- C. Business development manager
- D. Waterspider

Answer: D

NEW QUESTION 41

- (Exam Topic 2)

You receive an error when importing data into the pilot instance. You need to troubleshoot the error. What should you do first?

Answer Area

You receive an error when importing data into the pilot instance. You need to troubleshoot the error. What should you do first?

Set the entity order to Customer parameters, Customer groups, Customers V3, Customer invoicing journal.
Set Default refresh type to Full push only.
Set Skip staging to Yes.
Set Generate data package to No.

Only a subset of customers is imported into the pilot instance. You make a correction to ensure that all customer data is imported. What should you do next?

Set the entity order to Customer parameters, Customer groups, Customers V3, Customer invoicing journal.
Set Default refresh type to Full push only.
Set Skip staging to Yes.
Set Generate data package to No.

- A. Mastered
- B. Not Mastered

Answer: A

Explanation:

Answer Area

You receive an error when importing data into the pilot instance. You need to troubleshoot the error. What should you do first?

Set the entity order to Customer parameters, Customer groups, Customers V3, Customer invoicing journal.
Set Default refresh type to Full push only.
Set Skip staging to Yes. ¹
Set Generate data package to No.

Only a subset of customers is imported into the pilot instance. You make a correction to ensure that all customer data is imported. What should you do next?

Set the entity order to Customer parameters, Customer groups, Customers V3, Customer invoicing journal.
Set Default refresh type to Full push only.
Set Skip staging to Yes.
Set Generate data package to No.

NEW QUESTION 46

- (Exam Topic 2)

You are a systems administrator for a Dynamics 365 for Finance and Operations environment.

You must notify the person responsible for deliveries that production could be delayed if deliveries are postponed.

You need to configure the alert.

What object should you configure the alert on?

- A. Inventory control
- B. Inventory location
- C. Purchase order
- D. Product

Answer: C

NEW QUESTION 48

- (Exam Topic 2)

A company implements Dynamics 365 for Finance and Operations. It must set up the system to be ready for entering inventory items. You need to select which unit of conversion fits the scenario.

Which conversion types should you use? To answer, select the appropriate options in the answer area. NOTE: Each correct selection is worth one point.

Answer Area	Scenario	Conversion type
	Car paint colors and their ingredients are purchased in barrels, stocked in ounces, and sold in gallons.	<div>Standard</div> <div>Intra-class</div> <div>Inter-class</div>
	Steel is purchased in tons, stocked in pounds, and sold in linear feet.	<div>Standard</div> <div>Intra-class</div> <div>Inter-class</div>
	Bolts and nuts are purchased in pounds, stocked as individual units, and sold in boxes.	<div>Standard</div> <div>Intra-class</div> <div>Inter-class</div>

- A. Mastered
- B. Not Mastered

Answer: A

Explanation:

Answer Area	Scenario	Conversion type
	Car paint colors and their ingredients are purchased in barrels, stocked in ounces, and sold in gallons.	<div>Standard</div> <div>Intra-class</div> <div>Inter-class</div>
	Steel is purchased in tons, stocked in pounds, and sold in linear feet.	<div>Standard</div> <div>Intra-class</div> <div>Inter-class</div>
	Bolts and nuts are purchased in pounds, stocked as individual units, and sold in boxes.	<div>Standard</div> <div>Intra-class</div> <div>Inter-class</div>

NEW QUESTION 50

- (Exam Topic 2)

You are configuring the address books for a company's accounts receivable, accounts payable, and retail operations.

You need to configure the appropriate address books to meet various requirements.

Which address book should you use for each scenario? To answer, drag the appropriate address book objects to the correct scenarios. Each address book object may be used once, more than once, or not at all. You may need to drag the spit bar between panes or scroll to view content.

NOTE: Each correct selection is worth one point.

Address Book Object	Answer Area	Address Book Object
<div>employee</div>	<div>Scenario</div>	
<div>global</div>	Restrict account visibility for a given retail channel transaction.	<div>Address Book Object</div>
<div>customer</div>	Create an address for a vendor.	<div>Address Book Object</div>
<div>contact</div>	Link workers to retail locations.	<div>Address Book Object</div>
	Create an address for a prospect.	<div>Address Book Object</div>

- A. Mastered
- B. Not Mastered

Answer: A

Explanation:

Address Book Object

employee

global

customer

contact

Answer Area

Scenario

Restrict account visibility for a given retail channel transaction.

Create an address for a vendor.

Link workers to retail locations.

Create an address for a prospect.

Address Book Object

customer

global

employee

contact

NEW QUESTION 54

- (Exam Topic 2)

Note: This question is part of a series of questions that present the same scenario. Each question in the series contains a unique solution that might meet the stated goals. Some question sets might have more than one correct solution, while others might not have a correct solution. After you answer a question in this section, you will NOT be able to return to it. As a result, these questions will not appear in the review screen. You are configuring a Dynamics 365 for Finance and Operations environment. You must set up Microsoft Excel data exports. You need to verify that the solution will result in a successful export of data to Excel. Solution: Use Workbook Designer to build an editable custom export of customer data that includes only postal code, city, and state. Does the solution meet the goal?

- A. Yes
B. No

Answer: A

NEW QUESTION 59

- (Exam Topic 2)

You are a Dynamics 365 for Finance and Operations implementation consultant. You plan to use automated regression testing in a company's environment, as the system will be updated frequently until automatic updates can be applied. You need to identify when and what key business object should be used during the implementation. Which business objects should you use? To answer, drag the appropriate objects to the correct component actions. Each object may be used once, more than once, or not at all. You may need to drag the split bar between panes or scroll to view content. NOTE: Each correct selection is worth one point.

Objects

Test scripts

Business requirements

Answer Area

Component actions

Generate from the analysis meetings

Use for regression testing

Generate use cases

Use in a gap analysis process

Object

Object

Object

Object

Object

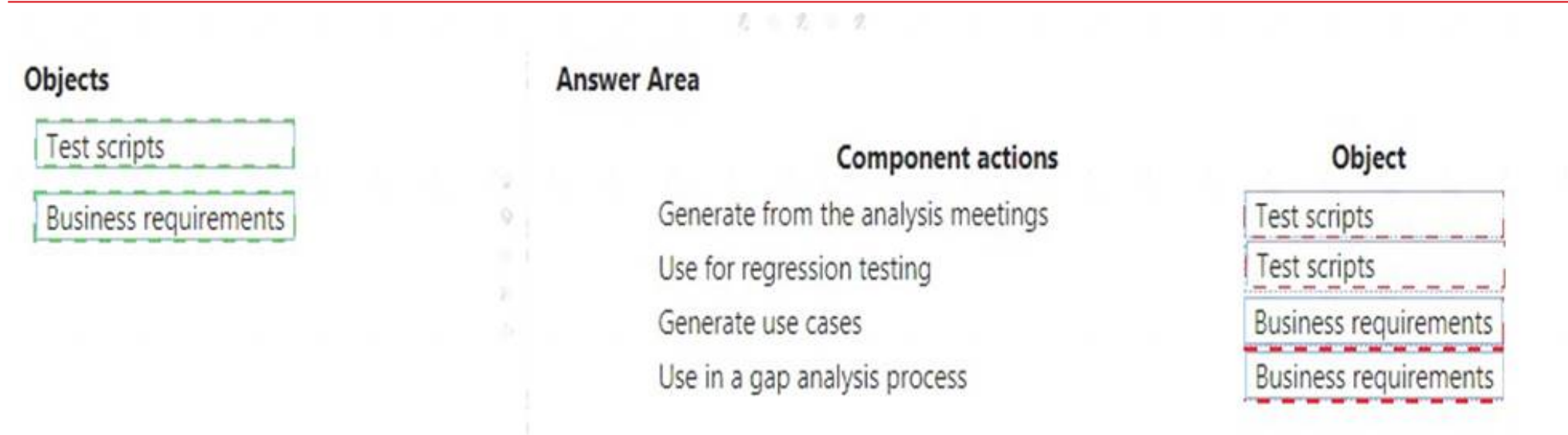
A. Mastered
B. Not Mastered

Answer: A

Explanation:

Your Partner of IT Exam

visit - <https://www.exambible.com>



NEW QUESTION 63

- (Exam Topic 2)

Note: This question is part of a series of questions that present the same scenario. Each question in the series contains a unique solution that might meet the stated goals. Some question sets might have more than one correct solution, while others might not have a correct solution. After you answer a question in this section, you will NOT be able to return to it. As a result, these questions will not appear in the review screen.

You are a functional consultant who is deploying Dynamics 365 for Finance and Operations. The implementation must:

- ☒ Use an iterative approach
- ☒ Integrate with real-world data
- ☒ Enforce standards and governance
- ☒ Implement multiple rounds of feedback

You need to deploy and validate the implementation.

Solution: Perform a fit-gap analysis. Configure Dynamics 365 for Finance and Operations to address the functional gap. Deploy the configuration.

Does the solution meet the goal?

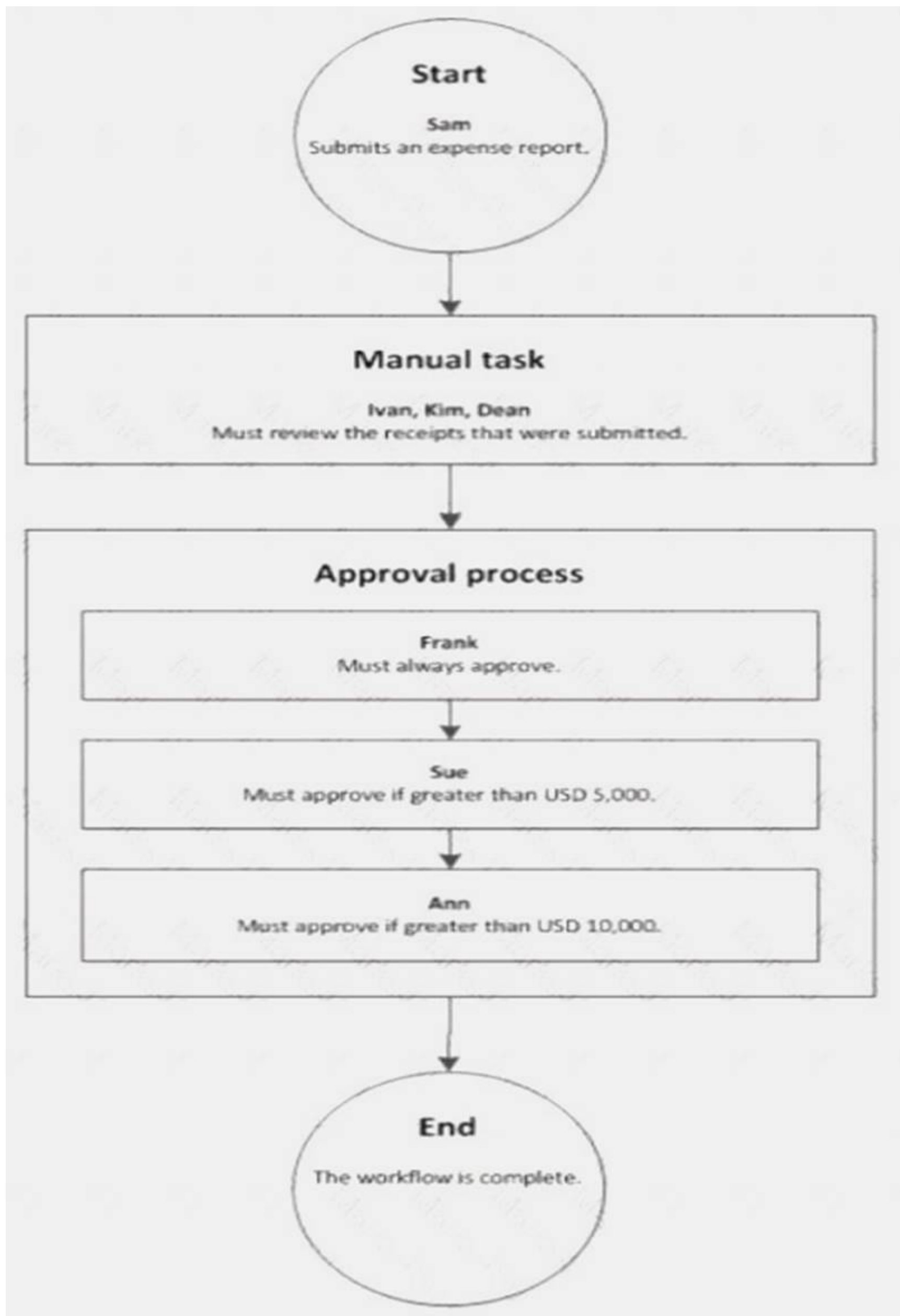
- A. Yes
- B. No

Answer: A

NEW QUESTION 65

- (Exam Topic 2)

A company sets up a workflow for expense reports. An employee named Sam submits an expense report totaling USD 7,000 to go through the workflow.



Use the drop-down menus to select the answer choice that answers each question based on the information presented in the graphic.

NOTE: Each correct selection is worth one point.

Answer Area	
Questions	Answer choice
What statement about the workflow is correct?	<div>Ann can reject the expense report.</div> <div>Ivan, Kim, and Dean must all complete the manual task.</div> <div>The workflow ends after Sue approves the expense report.</div> <div>The expense report will go through Frank, Sue, and Ann for approval.</div>
What type of workflow is this?	<div>Workflow with roles</div> <div>Workflow with a manual decision</div> <div>Workflow with multiple users in a task</div> <div>Workflow with a line-item workflow element</div>

- A. Mastered
B. Not Mastered

Answer: A

Explanation:

Reference:

<https://docs.microsoft.com/en-us/dynamicsax-2012/appuser-itpro/workflow-with-multiple-users-in-a-task>

NEW QUESTION 69

- (Exam Topic 2)

Note: This question is part of a series of questions that present the same scenario. Each question in the series contains a unique solution that might meet the stated goals. Some question sets might have more than one correct solution, while others might not have a correct solution.

After you answer a question in this section, you will NOT be able to return to it. As a result, these questions will not appear in the review screen.

You are a Dynamics 365 for Finance and Operations system administrator. You have a test environment that is used by several people at any given time.

You create a new data entity in your development and migrate the code to the test environment. In the test environment, you are unable to find the data entity in the list.

You need to locate the data entity.

Solution: Enable the Public API check box in the data entity. Does the solution meet the goal?

- A. Yes
B. No

Answer: B

NEW QUESTION 73

- (Exam Topic 2)

You are a system administrator using Dynamics 365 for Finance and Operations. You work in a project-based organization.

Each project has an approval process that will be assigned to different users of the system. Approvals are processed based on documents. Within those documents are different line items. Each line item may have a different approver.

You need to validate if the proposed action will satisfy the requirements.

For each of the following solutions, select Yes if the action meets the requirements. Otherwise, select No. NOTE: Each correct selection is worth one point.

Answer Area			
Action		Yes	No
Configure document types. Configure document management parameters.		<input type="radio"/>	<input type="radio"/>
Create a document workflow. Configure line-item workflow elements for the document workflow.		<input type="radio"/>	<input type="radio"/>
Create workflow actions for when the document is assigned to the approver.		<input type="radio"/>	<input type="radio"/>
Set up reason codes for electronic signatures.		<input type="radio"/>	<input type="radio"/>

- A. Mastered
B. Not Mastered

Answer: A

Explanation:

Answer Area	Action	Yes	No
	Configure document types. Configure document management parameters.	<input checked="" type="radio"/>	<input type="radio"/>
	Create a document workflow. Configure line-item workflow elements for the document workflow.	<input type="radio"/>	<input checked="" type="radio"/>
	Create workflow actions for when the document is assigned to the approver.	<input checked="" type="radio"/>	<input type="radio"/>
	Set up reason codes for electronic signatures.	<input checked="" type="radio"/>	<input type="radio"/>

NEW QUESTION 74





- (Exam Topic 2)

You are a Dynamics 365 for Finance and Operations system administrator.

The finance department is experiencing electronic reporting submittal issues. You must use all available sources to troubleshoot those issues.

You need to identify potential hotfixes.

Which four actions should you perform in sequence? To answer, move the appropriate actions from the list of actions to the answer area and arrange them in the correct order.

Actions		Answer area
Log in to Lifecycle Services (LCS).		
Use the Issue search tile.		
Select a project to work in.		
Enter the issue case number.		
Enter search terms.		
Create a new case.		

- A. Mastered
- B. Not Mastered

Answer: A

Explanation:

Reference:

<https://docs.microsoft.com/en-us/dynamics365/unified-operations/dev-itpro/lifecycle-services/issue-search-lcs>

NEW QUESTION 78

- (Exam Topic 2)

Note: This question is part of a series of questions that present the same scenario. Each question in the series contains a unique solution that might meet the stated goals. Some question sets might have more than one correct solution, while others might not have a correct solution.

After you answer a question in this section, you will NOT be able to return to it. As a result, these questions will not appear in the review screen.

You are a Dynamics 365 for Finance and Operations security administrator.

When testing security setups, users report that certain roles are gaining access to sensitive information via a form in the system.

You must investigate which user roles have what visibility and access level to system objects, and then send a report to the implementation team to address security compliance concerns.

You need to report the information from the system. Solution: Generate the User role assignments report. Does the solution meet the goal?

- A. Yes
- B. No

Answer: B

NEW QUESTION 83

- (Exam Topic 2)

A company plans to create a global address book and additional address books for each line of business. You need to help add parties to the address books.

What party types can you use for both the global address book and the additional address books? NOTE: Each correct selection is worth one point.

- A. Customer
- B. Vendor
- C. Person
- D. Competitor

E. Organization

Answer: ABD

Explanation:

<https://docs.microsoft.com/en-sg/dynamics365/unified-operations/fin-and-ops/organization-administration/overv>

NEW QUESTION 87

- (Exam Topic 2)

You set up Dynamics 365 for Finance and Operations. Your organization will use email with the application.

You need to ensure that email will be sent using typical secure settings. What setting must be set as specified?

- A. In-place hold and Litigation hold are enabled.
- B. In-place eDiscovery is enabled,
- C. The SMTP port field is set to 587.
- D. Retention policies are enabled.

Answer: C

NEW QUESTION 88

- (Exam Topic 2)

Note: This question is part of a series of questions that present the same scenario. Each question in the series contains a unique solution that might meet the stated goals. Some question sets might have more than one correct solution, while others might not have a correct solution.

After you answer a question in this section, you will NOT be able to return to it. As a result, these questions will not appear in the review screen.

You are developing a file-based integration to Dynamics 365 for Finance and Operations.

Microsoft Excel files with 15,000 or more records need to be imported into the system periodically by individual users. The records need to be imported in full within a 5-minute approved window.

You need to determine how to accomplish the import into the system.

Solution: Import the data by using the Data Management Framework's package API. Does the solution meet the goal?

- A. Yes
- B. No

Answer: B

NEW QUESTION 89

- (Exam Topic 2)

You are a Dynamics 365 for Finance and Operations system administrator for a United States-based corporation that is expanding to other regions.

You set up a new legal entity for Brazil.

You need to enable localization for Brazil in the new legal entity. What should you do?

- A. Create a new Lifecycle Services project.
- B. Create a new entity with your corporate address in the system, and then update the address to the Brazil office address.
- C. Create a new legal entity with the Brazil office address in the system, and then set preferences according to the user.
- D. Create a new configuration key and associate it with the Brazil localization.
- E. Create a new entity in the system with your corporate address and set the user language preferences for Brazil.

Answer: D

NEW QUESTION 92

- (Exam Topic 2)

A company is migrating to Dynamics 365 for Finance and Operations from a legacy system. The company is creating new questionnaires for customers.

When the survey responses come in, the company wants to provide ratings as a foundation for a further discussion.

You set up questionnaire types, question types, and questionnaire parameters. You need to design the questionnaire.

In which order should you perform the actions? To answer, move all actions to the answer area and arrange them in the correct order.

Actions

Attach questions to the questionnaire

Set up the questionnaire

Set up questions and their association

Set up answer groups and answers

Answer Area



- A. Mastered
- B. Not Mastered

Answer: A

Explanation:

References:
<https://docs.microsoft.com/en-us/dynamics365/unified-operations/talent/design-questionnaires>

NEW QUESTION 94

- (Exam Topic 2)

You manage a Dynamics 365 for Finance and Operations environment.
In preparation for being migrated into a new environment, data packages are being numbered in alignment with the default numbering formats in Lifecycle Services. A package is named 03.01.002.
You need to identify what this package contains. To answer, select the appropriate option in the answer area. NOTE: Each correct selection is worth one point.

Segment	Component
03	<div>The environment The module The data type The month</div>
01	<div>The module The month The sequence number The data type</div>
002	<div>The sequence number The data package version The data entity The data type reference</div>

- A. Mastered
- B. Not Mastered

Answer: A

Explanation:

Segment	Component
03	<div>The environment The module The data type The month</div>
01	<div>The module The month The sequence number The data type</div>
002	<div>The sequence number The data package version The data entity The data type reference</div>

NEW QUESTION 97

- (Exam Topic 2)

You are a Dynamics 365 for Finance and Operations security administrator. Users are reporting that they cannot access a given form in the system.
You need to quickly identify what roles, duties, and privileges grant access to this form to determine the best course of action for granting access.
What should you do?

- A. Security duty assignments report
- B. Security role access report
- C. Security development tool
- D. Security diagnostics
- E. Maintenance mode

Answer: D

NEW QUESTION 98

- (Exam Topic 2)

You are a Dynamics 365 for Finance and Operations system administrator. You create different workflows for Canada and the Unites States.
You must create a workflow that sends a notification to the North American workflow administrator with workflow comments in the notification.
You need to configure the workflows.
What option should you select for each scenario? To answer, select the appropriate options in the answer area. NOTE: Each correct selection is worth one point.

Scenario	Option
Include a notification with workflow-specific data.	<div>Notification texts Work item instructions Placeholders Line-item workflows</div>
Run a different workflow for each region.	<div>Condition Automatic action Parallel activity Automated task</div>
Send an email to a group of users by role when a workflow task is rejected.	<div>Workflow user Participant Queue</div>

- A. Mastered
- B. Not Mastered

Answer: A

Explanation:

Scenario	Option
Include a notification with workflow-specific data.	Notification texts Work item instructions Placeholders Line-item workflows
Run a different workflow for each region.	Condition Automatic action Parallel activity Automated task
Send an email to a group of users by role when a workflow task is rejected.	Workflow user Participant Queue

NEW QUESTION 102

- (Exam Topic 2)

A system administrator has limited security rights in a Dynamics 365 for Finance and Operations environment that has multiple legal entities. You have a service-level agreement (SLA) of 30 minutes for support requests.

The organizational administrator set up the printers for the organization.

A printer fails. The system administrator deletes the printer instance. Sensitive print jobs remain in the printer queue and must be purged. Existing permissions do not allow the system administrator to purge the print queue because the printer is attached to multiple legal entities.

You need to purge the documents from the print queue.

What should you do?

- A. Wait for the organizational administrator to return to purge the documents._
- B. Use the system administration utility to purge the documents.
- C. Use an account with administrative permissions on the network printer to purge the queue.
- D. Contact Microsoft technical support-

Answer: C

NEW QUESTION 106

- (Exam Topic 2)

You set up a new installation of Dynamics 365 for Finance and Operations for a Fortune 500 company. The company is organized into divisions.

You need to design the structure in the application.

What application features should you use? To answer, drag the appropriate setting to the correct drop targets. Each source may be used once, more than once, or not at all. You may need to drag the split bar between panes or scroll to view content.

NOTE: Each correct selection is worth one point.

Application features	Answer Area	Organizational structure	Application feature
Legal entity		The fortune 500 company	Application feature
Business unit		A semi-autonomous operating entity	Application feature
Department		Human resources	Application feature
Value stream		Production flow activity control	Application feature

- A. Mastered
- B. Not Mastered

Answer: A

Explanation:

References:

<https://docs.microsoft.com/en-us/dynamics365/unified-operations/fin-and-ops/organization-administration/organ>

NEW QUESTION 109

- (Exam Topic 2)

You are a Dynamics 365 for Finance and Operations system administrator.

A user is reporting an issue with the Sales Order form. The UI for the form is not loading properly, and there are some performance issues. The object was working fine until the most recent update release. The user has personalized this form, is using Microsoft Internet Explorer 11, and no other users and reporting issues.

You need to resolve the issue. What should you do?

- A. Export, delete, then reimport the usage data for the sales form object.
- B. Disable and then re-enable the user.
- C. Reset all the usage data for the user.
- D. Reimport and compile the AOT object causing issues.

Answer: C

NEW QUESTION 114

- (Exam Topic 2)

A company implements Dynamics 365 for Finance and Operations.

The company wants to utilize Case management to track project issues and risks and associate them to the projects. Project managers will be responsible for managing the new cases.

You need to configure the system. What should you do?

- A. Create case subcategories named Issue and Risk.
- B. Create parent case categories named Issue and Risk.
- C. Create case activities for Issue and Risk.
- D. Create case category security roles named Issue and Risk and assign them to the Project managers duty.

Answer: A

NEW QUESTION 118

- (Exam Topic 2)

A company plans to set up an organizational hierarchy to manage organizational relationships. You need to identify which organizational purpose to use. What purpose can you assign to an organizational hierarchy?

- A. Centralized payments
- B. Financial reason code
- C. Cost center
- D. Price models

Answer: A

Explanation:

Reference:

<https://docs.microsoft.com/en-us/dynamics365/unified-operations/financials/cash-bank-management/set-up-cent>

NEW QUESTION 120

- (Exam Topic 2)

You are a Dynamics 365 for Finance and Operations systems administrator.

An issue has been reported that appears to be a base Dynamics 365 bug. The system was last updated three weeks ago. Searching for the issue by description in Lifecycle Services is not working.

You need to determine other ways to search for similar issues to help narrow down the search before opening a Microsoft ticket.

What are two ways to search for a released hotfix? Each correct answer presents a complete solution.

NOTE: Each correct selection is worth one point.

- A. By industry
- B. By Microsoft support ticket number
- C. By AOT object name
- D. Date range for release

Answer: BC

Explanation:

References:

<https://docs.microsoft.com/en-us/dynamics365/unified-operations/dev-itpro/lifecycle-services/issue-search-lcs>

NEW QUESTION 123

.....

Relate Links

100% Pass Your mb-300 Exam with ExamBible Prep Materials

<https://www.exambible.com/mb-300-exam/>

Contact us

We are proud of our high-quality customer service, which serves you around the clock 24/7.

Viste - <https://www.exambible.com/>