

Exam Questions NSE7_EFW-7.2

Fortinet NSE 7 - Enterprise Firewall 7.2

https://www.2passeasy.com/dumps/NSE7_EFW-7.2/



NEW QUESTION 1

Exhibit.

```
Routing table for VRF=0
B*  0.0.0.0/0 [20/0] via 100.64.1.254 (recursive is directly connected, port1), 00:03:58, [1/0]
C   10.1.0.0/24 is directly connected, port3
B   10.1.1.0/24 [200/0] via 172.16.1.2 (recursive is directly connected, tunnel_0), 00:03:25, [1/0]
B   10.1.2.0/24 [200/0] via 172.16.1.3 (recursive is directly connected, tunnel_1), 00:03:21, [1/0]
O   10.1.4.0/24 [110/2] via 10.1.0.100, port3, 00:04:56, [1/0]
O   10.1.10.0/24 [110/2] via 10.1.0.1, port3, 00:04:56, [1/0]
C   100.64.1.0/24 is directly connected, port1
C   100.64.2.0/24 is directly connected, port2
C   172.16.1.1/32 is directly connected, tunnel_0
      is directly connected, tunnel_1
C   172.16.1.2/32 is directly connected, tunnel_0
C   172.16.1.3/32 is directly connected, tunnel_1
C   172.16.100.0/24 is directly connected, port8
```

Refer to the exhibit, which shows a partial routing table

What two conclusions can you draw from the corresponding FortiGate configuration? (Choose two.)

- A. IPsec Tunnel aggregation is configured
- B. net-device is enabled in the tunnel IPsec phase 1 configuration
- C. OSPF is configured to run over IPsec.
- D. add-route is disabled in the tunnel IPsec phase 1 configuration.

Answer: BD

Explanation:

? Option B is correct because the routing table shows that the tunnel interfaces have a netmask of 255.255.255.255, which indicates that net-device is enabled in the phase 1 configuration. This option allows the FortiGate to use the tunnel interface as a next-hop for routing, without adding a route to the phase 2 destination¹.

? Option D is correct because the routing table does not show any routes to the phase 2 destination networks, which indicates that add-route is disabled in the phase 1 configuration. This option controls whether the FortiGate adds a static route to the phase 2 destination network using the tunnel interface as the gateway².

? Option A is incorrect because IPsec tunnel aggregation is a feature that allows multiple phase 2 selectors to share a single phase 1 tunnel, reducing the number of tunnels and improving performance³. This feature is not related to the routing table or the phase 1 configuration.

? Option C is incorrect because OSPF is a dynamic routing protocol that can run over IPsec tunnels, but it requires additional configuration on the FortiGate and the peer device⁴. This option is not related to the routing table or the phase 1 configuration. References: =

? 1: Technical Tip: 'set net-device' new route-based IPsec logic²

? 2: Adding a static route⁵

? 3: IPsec VPN concepts⁶

? 4: Dynamic routing over IPsec VPN⁷

NEW QUESTION 2

Refer to the exhibit, which shows a custom signature.

```
Signature
SBID( -name "Ultraviewer.Custom"; -protocol tcp; -service ssl; -flow from_client;
-pattern "ultraviewer"; -context host; -app_cat 7;)
```

Which two modifications must you apply to the configuration of this custom signature so that you can save it on FortiGate? (Choose two.)

- A. Add severity.
- B. Add attack_id.
- C. Ensure that the header syntax is F-SBID.
- D. Start options with --.

Answer: AB

Explanation:

For a custom signature to be valid and savable on a FortiGate device, it must include certain mandatory fields. Severity is used to specify the level of threat that the signature represents, and attack_id is a unique identifier for the signature. Without these, the signature would not be complete and could not be correctly utilized by the FortiGate's Intrusion Prevention System (IPS).

NEW QUESTION 3

Which two statements about the neighbor-group command are true? (Choose two.)

- A. You can configure it on the GUI.
- B. It applies common settings in an OSPF area.
- C. It is combined with the neighbor-range parameter.
- D. You can apply it in Internal BGP (IBGP) and External BGP (EBGP).

Answer: BD

Explanation:

The neighbor-group command in FortiOS allows for the application of common settings to a group of neighbors in OSPF, and can also be used to simplify configuration by applying common settings to both IBGP and EBGP neighbors. This grouping functionality is a part of the FortiOS CLI and is documented in the

Fortinet CLI reference.

NEW QUESTION 4

Which two statements about the Security fabric are true? (Choose two.)

- A. FortiGate uses the FortiTelemetry protocol to communicate with FortiAnalyzer.
- B. Only the root FortiGate sends logs to FortiAnalyzer
- C. Only FortiGate devices with configuration-sync receive and synchronize global CMDDB objects that the root FortiGate sends
- D. Only the root FortiGate collects network topology information and forwards it to FortiAnalyzer

Answer: BC

Explanation:

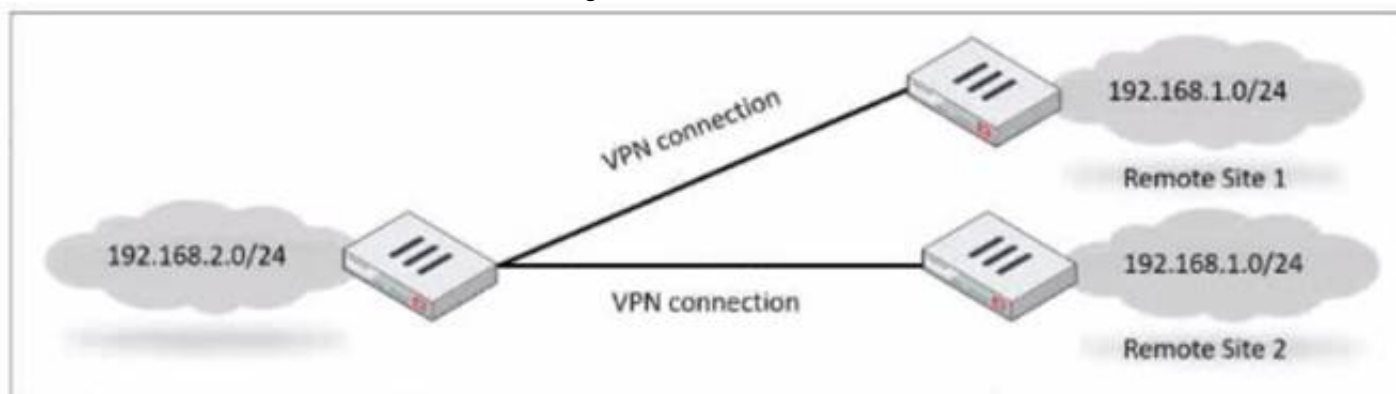
In the Security Fabric, only the root FortiGate sends logs to FortiAnalyzer (B). Additionally, only FortiGate devices with configuration-sync enabled receive and synchronize global Central Management Database (CMDDB) objects that the root FortiGate sends (C). FortiGate uses the FortiTelemetry protocol to communicate with other FortiGates, not FortiAnalyzer (A). The last option (D) is incorrect as all FortiGates can collect and forward network topology information to FortiAnalyzer.

References:

? FortiOS Handbook - Security Fabric

NEW QUESTION 5

Refer to the exhibit, which shows a network diagram.



Which IPsec phase 2 configuration should you implement so that only one remote site is connected at any time?

- A. Set route-overlap to allow.
- B. Set single-source to enable
- C. Set route-overlap to either use—new or use-old
- D. Set net-device to enable

Answer: C

Explanation:

To ensure that only one remote site is connected at any given time in an IPsec VPN scenario, you should use route-overlap with the option to either use-new or use-old. This setting dictates which routes are preferred and how overlaps in routes are handled, allowing for one connection to take precedence over the other (C).

References:

? FortiOS Handbook - IPsec VPN

NEW QUESTION 6

Refer to the exhibit, which contains information about an IPsec VPN tunnel.

```

FortiGate # diag vpn tunnel list
list all ipsec tunnel in vd 0
-----
name=tunnel_0 ver=2 serial=1 100.64.3.1:0->100.64.1.1:0 tun_id=100.64.1.1 tun_id6=:100.64.1.1
bound_if=3 lgwy=static/1 tun=intf mode=auto/1 encap=none/552 options[0228]=npu frag-rfc run_

proxyid_num=1 child_num=0 refcnt=3 ilast=42949917 olast=42949917 ad=/0
stat: rxp=0 txp=0 rxb=0 txb=0
dpd: mode=off on=0 idle=20000ms retry=3 count=0 seqno=0
natt: mode=none draft=0 interval=0 remote_port=0
fec: egress=0 ingress=0
proxyid=tunnel_0_0 proto=0 sa=1 ref=2 serial=1
src: 0:0.0.0.0-255.255.255.255:0
dst: 0:0.0.0.0-255.255.255.255:0
SA: ref=3 options=30202 type=00 soft=0 mtu=1280 expire=1454/00 replaywin=2048
seqno=1 esn=0 replaywin_lastseq=00000000 qat=192 rekey=0 hash_search_len=1
life: type=01 bytes=0/0 timeout=1768/1800
dec: spi=877d6590 esp=aes key=16 be308ec1fb05464205764424bc40a76d
ah=sha256 key=32 cc8894be3390983521a48b2e7a5c998e6b28a10a3ddd8e7bc7ecbe672dfe7cc5
enc: spi=63d0f38a esp=aes key=16 d8d3343af2fed4ddd958a022cd656b06
ah=sha256 key=32 264402ba8ad04a7e97732b52ec27c92ff86e0a97bb33e22887677336f1670c7d
dec:pkts/bytes=0/0, enc:pkts/bytes=0/0
npu_flag=00 npu_rgwy=100.64.1.1 npu_lgwy=100.64.3.1 npu_selid=0 dec_npuid=0 enc_npuid=0
run_tally=0
  
```

What two conclusions can you draw from the command output? (Choose two.)

- A. Dead peer detection is set to enable.
- B. The IKE version is 2.
- C. Both IPsec SAs are loaded on the kernel.

D. Forward error correction in phase 2 is set to enable.

Answer: BC

Explanation:

From the command output shown in the exhibit:

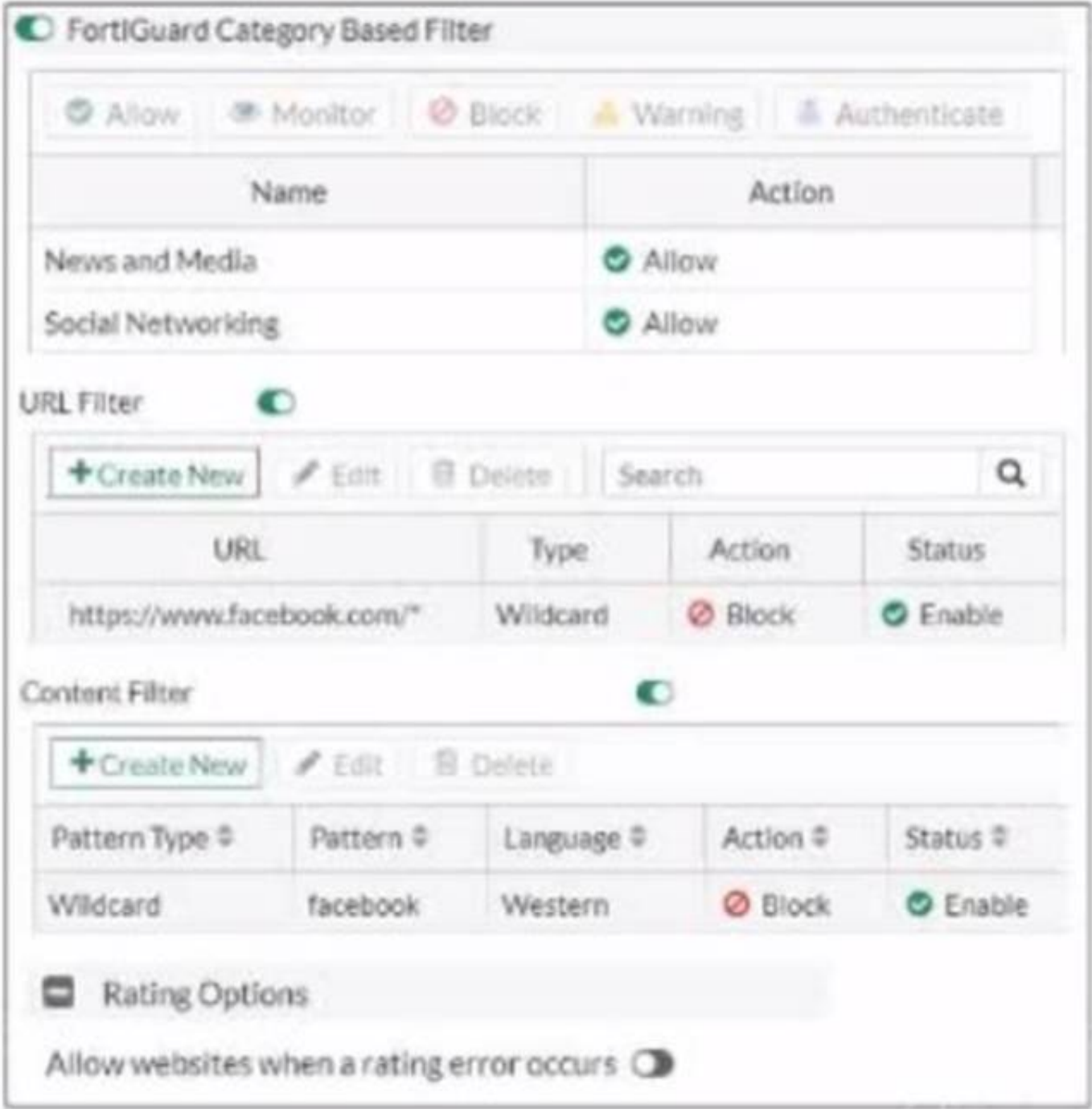
* B. The IKE version is 2: This can be deduced from the presence of 'ver=2' in the output, which indicates that IKEv2 is being used.

* C. Both IPsec SAs are loaded on the kernel: This is indicated by the line 'npu flags=0x0/0', suggesting that no offload to NPU is occurring, and hence, both Security Associations are loaded onto the kernel for processing.

Fortinet documentation specifies that the version of IKE (Internet Key Exchange) used and the loading of IPsec Security Associations can be verified through the diagnostic commands related to VPN tunnels.

NEW QUESTION 7

Exhibit.



Refer to the exhibit, which shows a partial web filter profile configuration. What can you conclude from this configuration about access to www.facebook.com, which is categorized as Social Networking?

- A. The access is blocked based on the Content Filter configuration
- B. The access is allowed based on the FortiGuard Category Based Filter configuration
- C. The access is blocked based on the URL Filter configuration
- D. The access is blocked if the local or the public FortiGuard server does not reply

Answer: C

Explanation:

The access to www.facebook.com is blocked based on the URL Filter configuration. In the exhibit, it shows that the URL "www.facebook.com" is specifically set to "Block" under the URL Filter section. References := Fortigate: How to configure Web Filter function on Fortigate, Web filter | FortiGate / FortiOS 7.0.2 | Fortinet Document Library, FortiGate HTTPS web URL filtering ... - Fortinet ... - Fortinet Community

NEW QUESTION 8

Refer to the exhibit, which shows an error in system fortiguard configuration.


```

FGFW-1 (fortiguard) # set protocol udp

command parse error before 'udp'
Command fail. Return code -61
    
```

What is the reason you cannot set the protocol to udp in config system fortiguard?

- A. FortiManager provides FortiGuard.
- B. fortiguard-anycast is set to enable.
- C. You do not have the corresponding write access.
- D. udp is not a protocol option.

Answer: D


Explanation:

The reason for the command failure when trying to set the protocol to UDP in the config system fortiguard is likely that UDP is not a protocol option in this context. The command syntax might be incorrect or the option to set a protocol for FortiGuard updates might not exist in this manner. So the correct answer is D. udp is not a protocol option.


NEW QUESTION 9

Refer to the exhibits, which show the configurations of two address objects from the same FortiGate.

Engineering address object

Name	Engineering
Color	 <input type="button" value="Change"/>
Type	Subnet
IP/Netmask	192.168.0.0 255.255.255.0
Interface	<input type="checkbox"/> any
Static route configuration	<input type="checkbox"/>
Comments	<input type="text" value="Write a comment..."/> 0/255
<input type="button" value="OK"/> <input type="button" value="Cancel"/>	

Finance address object

Name	Finance
Color	 <input type="button" value="Change"/>
Type	Subnet
IP/Netmask	192.168.1.0 255.255.255.0
Interface	<input type="checkbox"/> any
Static route configuration	<input type="checkbox"/>
Comments	<input type="text" value="Write a comment..."/> 0/255
<input type="button" value="Return"/>	

Why can you modify the Engineering address object, but not the Finance address object?

- A. You have read-only access.
- B. FortiGate joined the Security Fabric and the Finance address object was configured on the root FortiGate.
- C. FortiGate is registered on FortiManager.
- D. Another user is editing the Finance address object in workspace mode.

Answer: B

Explanation:

The inability to modify the Finance address object while being able to modify the Engineering address object suggests that the Finance object is being managed by a higher authority in the Security Fabric, likely the root FortiGate. When a FortiGate is part of a Security Fabric, address objects and other configurations may be managed centrally.

This aligns with the Fortinet FortiGate documentation on Security Fabric and central management of address objects.

NEW QUESTION 10

Which two statements about IKE version 2 fragmentation are true? (Choose two.)

- A. Only some IKE version 2 packets are considered fragmentable.
- B. The reassembly timeout default value is 30 seconds.
- C. It is performed at the IP layer.
- D. The maximum number of IKE version 2 fragments is 128.

Answer: AD

Explanation:

In IKE version 2, not all packets are fragmentable. Only certain messages within the IKE negotiation process can be fragmented. Additionally, there is a limit to the number of fragments that IKE version 2 can handle, which is 128. This is specified in the Fortinet documentation and ensures that the IKE negotiation process can proceed even in networks that have issues with large packets. The reassembly timeout and the layer at which fragmentation occurs are not specified in this context within Fortinet documentation.

NEW QUESTION 10

Which ADVPN configuration must be configured using a script on fortiManager, when using VPN Manager to manage fortiGate VPN tunnels?

- A. Enable AD-VPN in IPsec phase 1
- B. Disable add-route on hub
- C. Configure IP addresses on IPsec virtual interlaces
- D. Set protected network to all

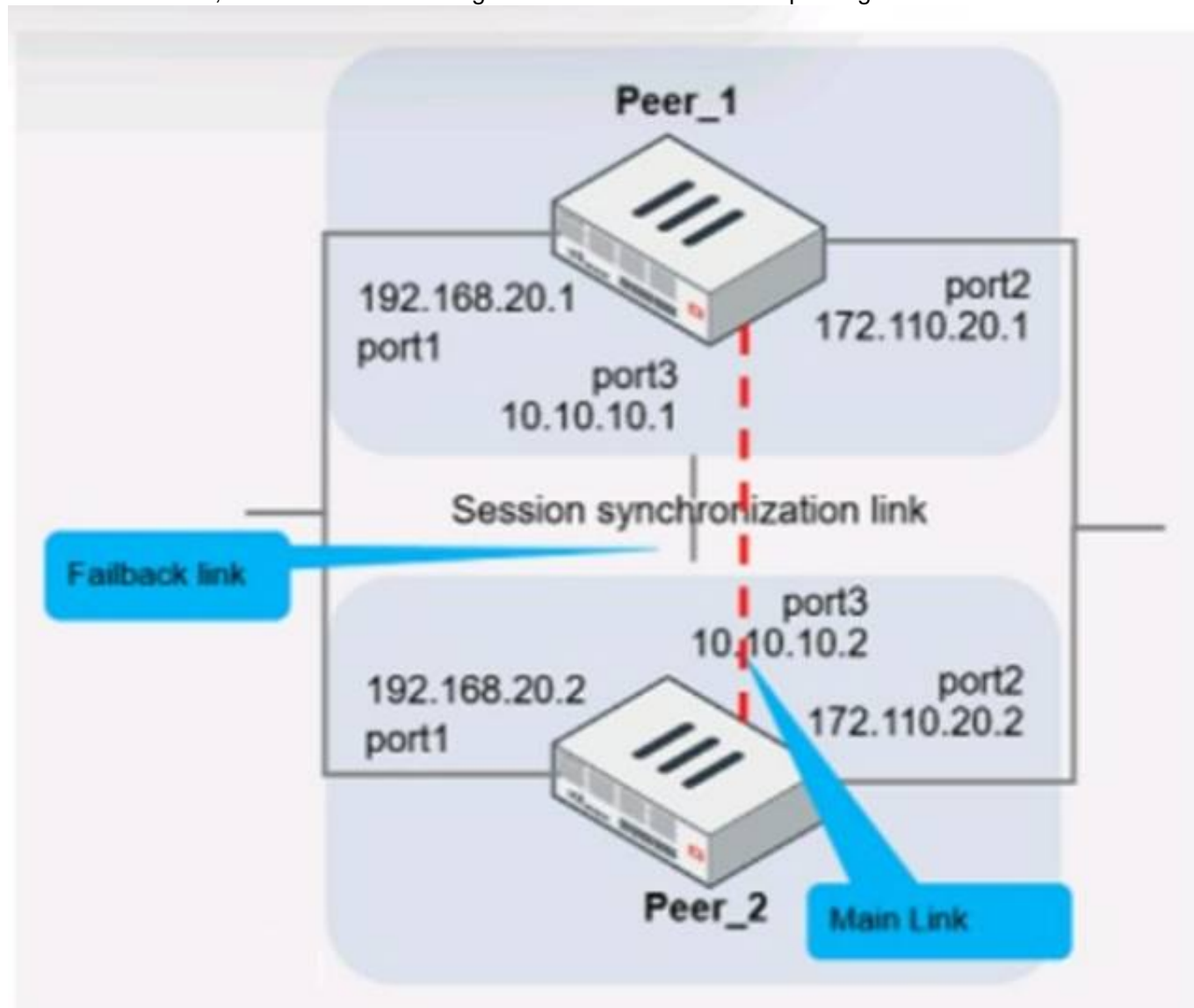
Answer: A

Explanation:

To enable AD-VPN, you need to edit an SD-WAN overlay template and enable the Auto-Discovery VPN toggle. This will automatically add the required settings to the IPsec template and the BGP template. You cannot enable AD-VPN directly in the IPsec phase 1 settings using VPN Manager. References := ADVPN | FortiManager 7.2.0 - Fortinet Documentation

NEW QUESTION 14

Refer to the exhibit, which shows two configured FortiGate devices and peering over FGSP.



The main link directly connects the two FortiGate devices and is configured using the set session-syn-dev <interface> command.

What is the primary reason to configure the main link?

- A. To have both sessions and configuration synchronization in layer 2
- B. To load balance both sessions and configuration synchronization between layer 2 and 3
- C. To have only configuration synchronization in layer 3
- D. To have both sessions and configuration synchronization in layer 3

Answer: D

Explanation:

The primary purpose of configuring a main link between the devices is to synchronize session information so that if one unit fails, the other can continue processing traffic without dropping active sessions.

* A.To have both sessions and configuration synchronization in layer 2.This is incorrect because FGSP is used for session synchronization, not configuration synchronization. B.To load balance both sessions and configuration synchronization between layer 2 and 3.FGSP does not perform load balancing and is not used for configuration synchronization.

* C.To have only configuration synchronization in layer 3.The main link is not used solely for configuration synchronization.

* D.To have both sessions and configuration synchronization in layer 3.The main link in an FGSP setup is indeed used to synchronize session information across the devices, and it operates at layer 3 since it uses IP addresses to establish the peering.

NEW QUESTION 18

Refer to the exhibit.

```
config system global
  set admin-https-pki-required disable
  set av-failopen pass
  set check-protocol-header loose
  set memory-use-threshold-extreme 95
  set strict-dirty-session-check enable
  ...
end
```

which contains a partial configuration of the global system. What can you conclude from this output?

- A. NPs and CPs are enabled
- B. Only CPs are disabled
- C. Only NPs are disabled
- D. NPs and CPs are disabled

Answer: D

Explanation:

The configuration output shows various global settings for a FortiGate device. The terms NP (Network Processor) and CP (Content Processor) relate to FortiGate's hardware acceleration features. However, the provided configuration output does not directly mention the status (enabled or disabled) of NPs and CPs. Typically, the command to disable or enable hardware acceleration features would specifically mention NP or CP in the command syntax. Therefore, based on the output provided, we cannot conclusively determine the status of NPs and CPs, hence option D is the closest answer since the output does not confirm that they are enabled.

References:

? FortiOS Handbook - CLI Reference for FortiOS 5.2

NEW QUESTION 20

After enabling IPS you receive feedback about traffic being dropped. What could be the reason?

- A. Np-accel-mode is set to enable
- B. Traffic-submit is set to disable
- C. IPS is configured to monitor
- D. Fail-open is set to disable

Answer: D

Explanation:

Fail-open is a feature that allows traffic to pass through the IPS sensor without inspection when the sensor fails or is overloaded. If fail-open is set to disable, traffic will be dropped in such scenarios¹. References: = IPS | FortiGate / FortiOS 7.2.3 - Fortinet Documentation

When IPS (Intrusion Prevention System) is configured, if fail-open is set to disable, it means that if the IPS engine fails, traffic will not be allowed to pass through, which can result in traffic being dropped (D). This is in contrast to a fail-open setting, which would allow traffic to bypass the IPS engine if it is not operational.

NEW QUESTION 22

Refer to the exhibit, which shows the output of a BGP summary.

```
FGT # get router info bgp summary
BGP router identifier 0.0.0.117, local AS number 65117
BGP table version is 104
3 BGP AS-PATH entries
0 BGP community entries

Neighbor      V    AS      MsgRcvd MsgSent   TblVer   InQ OutQ   Up/Down   State/PfxRcd
10.125.0.60    4  65060    1698    1756     103      0    0    03:02:49      1
10.127.0.75    4  65075    2206    2250     102      0    0    02:45:55      1
100.64.3.1     4  65501     101     115      0        0    0    never         Active

Total number of neighbors 3
```

What two conclusions can you draw from this BGP summary? (Choose two.)

- A. External BGP (EBGP) exchanges routing information.
- B. The BGP session with peer 10. 127. 0. 75 is established.
- C. The router 100. 64. 3. 1 has the parameter bfd set to enable.
- D. The neighbors displayed are linked to a local router with the neighbor-range set to a value of 4.

Answer: AB

Explanation:

The output of the BGP (Border Gateway Protocol) summary shows details about the BGP neighbors of a router, their Autonomous System (AS) numbers, the state of the BGP session, and other metrics like messages received and sent.

From the BGP summary provided:

- * A.External BGP (EBGP) exchanges routing information.This conclusion can be inferred because the AS numbers for the neighbors are different from the local AS number (65117), which suggests that these are external connections.
- * B.The BGP session with peer 10.127.0.75 is established.This is indicated by the state/prefix received column showing a numeric value (1), which typically means that the session is established and a number of prefixes has been received.
- * C.The router 100.64.3.1 has the parameter bfd set to enable.This cannot be concluded directly from the summary without additional context or commands specifically showing BFD (Bidirectional Forwarding Detection) configuration.
- * D.The neighbors displayed are linked to a local router with the neighbor-range set to a value of 4.The neighbor-range concept does not apply here; the value 4 in the 'V' column stands for the BGP version number, which is typically 4.

NEW QUESTION 26

You created a VPN community using VPN Manager on FortiManager. You also added gateways to the VPN community. Now you are trying to create firewall policies to permit traffic over the tunnel however, the VPN interfaces do not appear as available options.

- A. Create interface mappings for the IPsec VPN interfaces before you use them in a policy.
- B. Refresh the device status using the Device Manager so that FortiGate populates the IPSec interfaces
- C. Configure the phase 1 settings in the VPN community that you didnt initially configur
- D. FortiGate automatically generates the interfaces after you configure the required settings
- E. install the VPN community and gateway configuration on the fortiGate devices so that the VPN interfaces appear on the Policy Objects on fortiManager.

Answer: D

Explanation:

To use the VPN interfaces in a policy, you need to install the VPN community and gateway configuration on the FortiGate devices first. This will create the VPN interfaces on the FortiGate and sync them with FortiManager. References:

- ? Creating IPsec VPN communities
- ? VPN | FortiGate / FortiOS 7.2.0

NEW QUESTION 29

Refer to the exhibit, which contains a partial BGP combination.

```
config router bgp
  set as 65200
  set router-id 172.16.1.254
  config neighbor
    edit 100.64.1.254
      set remote-as 65100
    next
  end
end
```

You want to configure a loopback as the OGP source.

Which two parameters must you set in the BGP configuration? (Choose two)

- A. ebgp-enforce-multihop
- B. recursive-next-hop
- C. ibgp-enfoce-multihop
- D. update-source

Answer: AD

Explanation:

To configure a loopback as the BGP source, you need to set the “ebgp- enforce-multihop” and “update-source” parameters in the BGP configuration. The “ebgp- enforce-multihop” allows EBGP connections to neighbor routers that are not directly connected, while “update-source” specifies the IP address that should be used for the BGP session1. References := BGP on loopback, Loopback interface, Technical Tip: Configuring EBGP Multihop Load-Balancing, Technical Tip: BGP routes are not installed in routing

table with loopback as update source

NEW QUESTION 34

Which FortiGate in a Security Fabric sends logs to FortiAnalyzer?

- A. Only the root FortiGate.
- B. Each FortiGate in the Security fabric.
- C. The FortiGate devices performing network address translation (NAT) or unified threat management (UTM). if configured.
- D. Only the last FortiGate that handled a session in the Security Fabric

Answer: B

Explanation:

? Option B is correct because each FortiGate in the Security Fabric can send logs to FortiAnalyzer for centralized logging and analysis12. This allows you to monitor and manage the entire Security Fabric from a single console and view aggregated reports and dashboards.

? Option A is incorrect because the root FortiGate is not the only device that can send logs to FortiAnalyzer. The root FortiGate is the device that initiates the Security Fabric and acts as the central point of contact for other FortiGate devices3. However, it does not have to be the only log source for FortiAnalyzer.

? Option C is incorrect because the FortiGate devices performing NAT or UTM are not the only devices that can send logs to FortiAnalyzer. These devices can perform additional security functions on the traffic that passes through them, such as firewall, antivirus, web filtering, etc4. However, they are not the only devices that generate logs in the Security Fabric.

? Option D is incorrect because the last FortiGate that handled a session in the Security Fabric is not the only device that can send logs to FortiAnalyzer. The last FortiGate is the device that terminates the session and applies the final security policy5. However, it does not have to be the only device that reports the session information to FortiAnalyzer. References: =

? 1: Security Fabric - Fortinet Documentation1

? 2: FortiAnalyzer Demo6

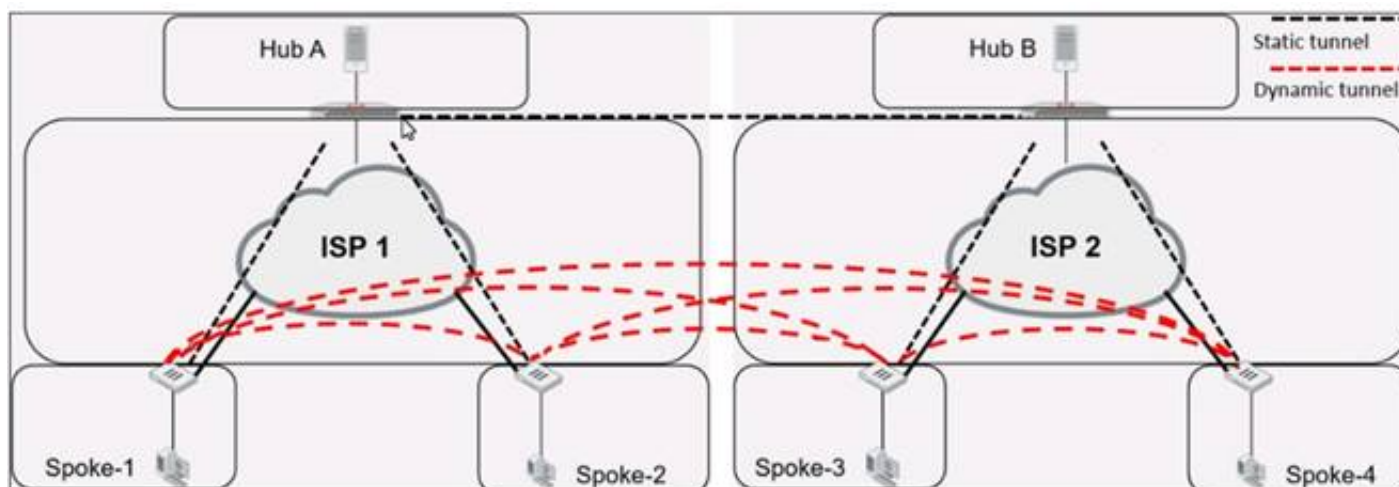
? 3: Security Fabric topology

? 4: Security Fabric UTM features

? 5: Security Fabric session handling

NEW QUESTION 37

Refer to the exhibit, which shows an ADVPN network.



Which VPN phase 1 parameters must you configure on the hub for the ADVPN feature to function? (Choose two.)

- A. set auto-discovery-forwarder enable
- B. set add-route enable
- C. set auto-discovery-receiver enable
- D. set auto-discovery-sender enable

Answer: AC

Explanation:

For the ADVPN feature to function properly on the hub, the following phase 1 parameters must be configured:

* A. set auto-discovery-forwarder enable: This enables the hub to forward shortcut information to the spokes, which is essential for them to establish direct tunnels.

* C. set auto-discovery-receiver enable: This allows the hub to receive shortcut offers from the spokes.

This information is corroborated by the Fortinet documentation, which explains that in an ADVPN setup, the hub must be able to both forward and receive shortcut information for dynamic tunnel creation between spokes.

NEW QUESTION 41

You want to improve reliability over a lossy IPSec tunnel.

Which combination of IPSec phase 1 parameters should you configure?

- A. fec-ingress and fec-egress
- B. Odpd and dpd-retryinterval
- C. fragmentation and fragmentation-mtu
- D. keepalive and keylive

Answer: C

Explanation:

For improving reliability over a lossy IPSec tunnel, the fragmentation and fragmentation-mtu parameters should be configured. In scenarios where there might be issues with packet size or an unreliable network, setting the IPsec phase 1 to allow for fragmentation will enable large packets to be broken down, preventing them from being dropped due to size or poor network quality. The fragmentation-mtu specifies the size of the fragments. This is aligned with Fortinet's recommendations for handling IPsec VPN over networks with potential packet loss or size limitations.

NEW QUESTION 45

.....

THANKS FOR TRYING THE DEMO OF OUR PRODUCT

Visit Our Site to Purchase the Full Set of Actual NSE7_EFW-7.2 Exam Questions With Answers.

We Also Provide Practice Exam Software That Simulates Real Exam Environment And Has Many Self-Assessment Features. Order the NSE7_EFW-7.2 Product From:

https://www.2passeasy.com/dumps/NSE7_EFW-7.2/

Money Back Guarantee

NSE7_EFW-7.2 Practice Exam Features:

- * NSE7_EFW-7.2 Questions and Answers Updated Frequently
- * NSE7_EFW-7.2 Practice Questions Verified by Expert Senior Certified Staff
- * NSE7_EFW-7.2 Most Realistic Questions that Guarantee you a Pass on Your FirstTry
- * NSE7_EFW-7.2 Practice Test Questions in Multiple Choice Formats and Updatesfor 1 Year