

Exam Questions CAPM

Certified Associate in Project Management (PMI-100)

<https://www.2passeasy.com/dumps/CAPM/>



NEW QUESTION 1

The ways in which the roles and responsibilities, reporting relationships, and staffing management will be addressed and structured within a project is described in the:

- A. Human resource management plan.
- B. Activity resource requirements.
- C. Personnel assessment tools,
- D. Multi-criteria decision analysis

Answer: A

NEW QUESTION 2

The Perform Integrated Change Control process occurs in which Process Group?

- A. Initiating
- B. Executing
- C. Monitoring and Controlling
- D. Planning

Answer: C

NEW QUESTION 3

Which cost is associated with nonconformance?

- A. Liabilities
- B. Inspections
- C. Training
- D. Equipment

Answer: A

NEW QUESTION 4

Which type of dependency is established based on knowledge of best practices within a particular application area or some unusual aspect of the project in which a specific sequence is desired, even though there may be other acceptable sequences?

- A. External
- B. Internal
- C. Mandatory
- D. Discretionary

Answer: D

NEW QUESTION 5

Which document defines how a project is executed, monitored and controlled, and closed?

- A. Strategic plan
- B. Project charter
- C. Project management plan
- D. Service level agreement

Answer: C

NEW QUESTION 6

Which earned value management (EVM) metric is a measure of the cost efficiency of budgeted resources expressed as a ratio of earned value (EV) to actual cost (AC) and is considered a critical EVM metric?

- A. Cost variance (CV)
- B. Cost performance index (CPI)
- C. Budget at completion (BAC)
- D. Variance at completion (VAC)

Answer: B

NEW QUESTION 7

What are the Project Procurement Management processes?

- A. Conduct Procurements, Control Procurements, Integrate Procurements, and Close Procurements
- B. Estimate Procurements, Integrate Procurements, Control Procurements, and Validate Procurements
- C. Plan Procurement Management, Conduct Procurements, Control Procurements, and Close Procurements
- D. Plan Procurement Management, Perform Procurements, Control Procurements, and Validate Procurements

Answer: C

NEW QUESTION 8

Processes in the Planning Process Group are typically carried out during which part of the project life cycle?

- A. Only once, at the beginning
- B. At the beginning and the end
- C. Once during each phase
- D. Repeatedly

Answer: D

NEW QUESTION 9

Conditions that are not under the control of the project team that influence, direct, or constrain a project are called:

- A. Enterprise environmental factors
- B. Work performance reports
- C. Organizational process assets
- D. Context diagrams

Answer: A

NEW QUESTION 10

Which item is an example of personnel assessment?

- A. Resource calendar
- B. Tight matrix
- C. Team-building activity
- D. Focus group

Answer: D

NEW QUESTION 10

Using values such as scope, cost, budget, and duration or measures of scale such as size, weight, and complexity from a previous similar project as the basis for estimating the same parameter or measurement for a current project describes which type of estimating?

- A. Bottom-up
- B. Parametric
- C. Analogous
- D. Three-point

Answer: C

NEW QUESTION 12

Which changes occur in risk and uncertainty as well as the cost of changes as the life cycle of a typical project progresses?

- A. Risk and uncertainty increase; the cost of changes increases.
- B. Risk and uncertainty increase; the cost of changes decreases.
- C. Risk and uncertainty decrease; the cost of changes increases.
- D. Risk and uncertainty decrease; the cost of changes decrease

Answer: C

NEW QUESTION 15

A risk response strategy in which the project team shifts the impact of a threat, together with ownership of the response, to a third party is called:

- A. mitigate
- B. accept
- C. transfer
- D. avoid

Answer: C

NEW QUESTION 18

Which input to the Manage Stakeholder Engagement process is used to document changes that occur during the project?

- A. Issue log
- B. Change log
- C. Expert judgment
- D. Change requests

Answer: B

NEW QUESTION 21

The Plan Stakeholder Management process belongs to which Process Group?

- A. Executing

- B. Initiating
- C. Planning
- D. Monitoring and Controlling

Answer: C

NEW QUESTION 22

Regression analysis, failure mode and effect analysis (FMEA), fault tree analysis (FTA), and trend analysis are examples of which tool or technique?

- A. Expert judgment
- B. Forecasting methods
- C. Earned value management
- D. Analytical techniques

Answer: D

NEW QUESTION 27

The process of establishing the policies, procedures, and documentation for planning, developing, managing, executing, and controlling the project schedule is known as:

- A. Plan Schedule Management.
- B. Develop Project Charter.
- C. Develop Schedule.
- D. Plan Scope Managemen

Answer: A

NEW QUESTION 32

Which item is an input to the Define Activities process?

- A. Schedule data
- B. Activity list
- C. Risk register
- D. Scope baseline

Answer: D

NEW QUESTION 37

A project in which the scope, time, and cost of delivery are determined as early as possible is following a life cycle that is:

- A. Adaptive
- B. Predictive
- C. Incremental
- D. Iterative

Answer: B

NEW QUESTION 41

An output of the Create WBS process is:

- A. Scope baseline.
- B. Change requests.
- C. Accepted deliverables.
- D. Variance analysi

Answer: A

NEW QUESTION 42

Which input to the Identify Stakeholders process provides information about internal or external parties related to the project?

- A. Procurement documents
- B. Communications plan
- C. Project charter
- D. Stakeholder register

Answer: C

NEW QUESTION 47

Which Knowledge Area involves identifying the people, groups, or organizations that may be impacted by or impact a project?

- A. Project Risk Management
- B. Project Human Resource Management
- C. Project Scope Management
- D. Project Stakeholder Management

Answer: D

NEW QUESTION 50

Which basic quality tool is most useful when gathering attributes data in an inspection to identify defects?

- A. Control charts
- B. Pareto diagrams
- C. Ishikavva diagrams
- D. Checksheets

Answer: D

NEW QUESTION 54

Stakeholder satisfaction should be managed as a key project:

- A. Benefit
- B. Initiative
- C. Objective
- D. Process

Answer: C

NEW QUESTION 57

The basis of identification for current or potential problems to support later claims or new procurements is provided by:

- A. A risk urgency assessment.
- B. The scope baseline.
- C. Work performance information.
- D. Procurement audit

Answer: C

NEW QUESTION 60

Configuration identification, configuration status accounting, and configuration verification and audit are all activities in which process?

- A. Perform Quality Assurance
- B. Direct and Manage Project Work
- C. Monitor and Control Project Work
- D. Perform Integrated Change Control

Answer: D

NEW QUESTION 65

Updates to organizational process assets such as procurement files, deliverable acceptances, and lessons learned documentation are typical outputs of which process?

- A. Close Project or Phase
- B. Conduct Procurements
- C. Control Procurements
- D. Close Procurements

Answer: D

NEW QUESTION 68

A regression line is used to estimate:

- A. Whether or not a process is stable or has predictable performance.
- B. How a change to the independent variable influences the value of the dependent variable.
- C. The upper and lower specification limits on a control chart.
- D. The central tendency, dispersion, and shape of a statistical distributio

Answer: B

NEW QUESTION 71

In which Knowledge Area is the project charter developed?

- A. Project Cost Management
- B. Project Scope Management
- C. Project Time Management
- D. Project Integration Management

Answer: D

NEW QUESTION 74

A project manager managing a cross-cultural virtual project team across several time zones should be concerned about the impacts of which communication technology factor?

- A. Urgent information need
- B. Sensitivity of information
- C. Project environment
- D. Ease of use

Answer: C

NEW QUESTION 77

A project manager should document the escalation path for unresolved project risks in the:

- A. Change control plan
- B. Stakeholder register
- C. Risk log
- D. Communications management plan

Answer: D

NEW QUESTION 78

Which process in Project Time Management includes reserve analysis as a tool or technique?

- A. Estimate Activity Resources
- B. Sequence Activities
- C. Estimate Activity Durations
- D. Develop Schedule

Answer: C

NEW QUESTION 83

Which tool or technique is used in the Plan Scope Management process?

- A. Document analysis
- B. Observations
- C. Product analysis
- D. Expert judgment

Answer: D

NEW QUESTION 88

Which process involves developing an approximation of the monetary resources needed to complete project activities?

- A. Estimate Costs
- B. Control Costs
- C. Determine Budget
- D. Plan Cost Management

Answer: A

NEW QUESTION 89

In a project, total float measures the:

- A. Ability to shuffle schedule activities to lessen the duration of the project.
- B. Amount of time an activity can be extended or delayed without altering the project finish date.
- C. Cost expended to restore order to the project schedule after crashing the schedule.
- D. Estimate of the total resources needed for the project after performing a forward pass

Answer: B

NEW QUESTION 94

An output of the Validate Scope process is:

- A. A requirements traceability matrix.
- B. The scope management plan.
- C. Work performance reports.
- D. Change request

Answer: D

NEW QUESTION 97

Reserve analysis is a tool and technique used in which process?

- A. Plan Risk Management
- B. Plan Risk Responses

- C. Identify Risks
- D. Control Risks

Answer: D

NEW QUESTION 101

The process of identifying and documenting relationships among the project activities is known as:

- A. Control Schedule.
- B. Sequence Activities.
- C. Define Activities.
- D. Develop Schedul

Answer: B

NEW QUESTION 105

A key benefit of the Manage Communications process is that it enables:

- A. The best use of communication methods.
- B. An efficient and effective communication flow.
- C. Project costs to be reduced.
- D. The best use of communication technology.

Answer: B

NEW QUESTION 109

Which Knowledge Areas include processes from the Closing Process Group?

- A. Project Quality Management and Project Time Management
- B. Project Scope Management and Project Risk Management
- C. Project Stakeholder Management and Project Cost Management
- D. Project Integration Management and Project Procurement Management

Answer: D

NEW QUESTION 114

Payback period, return on investment, internal rate of return, discounted cash flow, and net present value are all examples of:

- A. Expert judgment.
- B. Analytical techniques.
- C. Earned value management.
- D. Group decision-making technique

Answer: B

NEW QUESTION 115

Which item is a formal proposal to modify any document, deliverable, or baseline?

- A. Change request
- B. Requirements documentation
- C. Scope baseline
- D. Risk urgency assessment

Answer: A

NEW QUESTION 118

An input to the Identify Stakeholders process is:

- A. The project management plan.
- B. The stakeholder register.
- C. Procurement documents.
- D. Stakeholder analysi

Answer: C

NEW QUESTION 121

Which item is an output of Plan Quality Management and an input to Perform Quality Assurance?

- A. Organizational process updates
- B. Quality metrics
- C. Change requests
- D. Quality control measurements

Answer: B

NEW QUESTION 124

Which tool or technique is an examination of industry and specific vendor capabilities?

- A. Independent estimates
- B. Market research
- C. Analytical techniques
- D. Bidder conferences

Answer: B

NEW QUESTION 129

Scope, schedule, and cost parameters are integrated in the:

- A. Performance measurement baseline.
- B. Analysis of project forecasts,
- C. Summary of changes approved in a period,
- D. Analysis of past performanc

Answer: A

NEW QUESTION 134

Which process develops options and actions to enhance opportunities and reduce threats to project objectives?

- A. Identify Risks
- B. Control Risks
- C. Plan Risk Management
- D. Plan Risk Responses

Answer: D

NEW QUESTION 135

Status of deliverables, implementation status for change requests, and forecasted estimates to complete are examples of:

- A. Earned value management.
- B. Enterprise environmental factors.
- C. Organizational process assets.
- D. Work performance informatio

Answer: D

NEW QUESTION 138

What is the schedule performance index (SPI) if the planned value (PV) is \$100, the actual cost (AC) is \$150, and the earned value (EV) is \$50?

- A. 0.50
- B. 0.67
- C. 1.50
- D. 2.00

Answer: A

NEW QUESTION 139

A large portion of a projects budget is typically expended on the processes in which Process Group?

- A. Executing
- B. Planning
- C. Monitoring and Controlling
- D. Closing

Answer: B

NEW QUESTION 141

Which Process Group and Knowledge Area include the Sequence Activities process?

- A. Executing Process Group and Project Time Management
- B. Executing Process Group and Project Cost Management
- C. Planning Process Group and Project Time Management
- D. Planning Process Group and Project Cost Management

Answer: C

NEW QUESTION 146

Sending letters, memos, reports, emails, and faxes to share information is an example of which type of communication?

- A. Direct
- B. Interactive

- C. Pull
- D. Push

Answer: D

NEW QUESTION 151

Which input to the Manage Stakeholder Engagement process provides guidance on how stakeholders can best be involved in a project?

- A. Feedback analysis
- B. Stakeholder analysis
- C. Communication management plan
- D. Stakeholder management plan

Answer: D

NEW QUESTION 154

Which Plan Schedule Management tool or technique may involve choosing strategic options to estimate and schedule the project?

- A. Facilitation techniques
- B. Expert judgment
- C. Analytical techniques
- D. Variance analysis

Answer: C

NEW QUESTION 159

The iterative process of increasing the level of detail in a project management plan as greater amounts of information become available is known as:

- A. Continuous improvement.
- B. Predictive planning.
- C. Progressive elaboration.
- D. Quality assurance

Answer: C

NEW QUESTION 161

The Monitoring and Controlling Process Group includes processes that:

- A. Establish the scope, objectives, and course of action of a project,
- B. Define a new project or a new phase of an existing project.
- C. Track, review, and regulate the progress and performance of a project.
- D. Complete the work defined in the project management plan

Answer: C

NEW QUESTION 166

In the Plan Stakeholder Management process, expert judgment is used to:

- A. Provide information needed to plan appropriate ways to engage project stakeholders.
- B. Ensure comprehensive identification and listing of new stakeholders.
- C. Analyze the information needed to develop the project scope statement.
- D. Decide the level of engagement of the stakeholders at each required stage

Answer: D

NEW QUESTION 170

During which process does a project manager review all prior information to ensure that all project work is completed and that the project has met its objectives?

- A. Monitor and Control Project Work
- B. Perform Quality Assurance
- C. Close Project or Phase
- D. Control Scope

Answer: C

NEW QUESTION 173

An example of a group decision-making technique is:

- A. Nominal group technique.
- B. Majority.
- C. Affinity diagram.
- D. Multi-criteria decision analysis

Answer: B

NEW QUESTION 177

Which risk management strategy seeks to eliminate the uncertainty associated with a particular upside risk by ensuring that the opportunity is realized?

- A. Enhance
- B. Share
- C. Exploit
- D. Accept

Answer: C

NEW QUESTION 182

The process of prioritizing risks for further analysis or action is known as:

- A. Plan Risk Management.
- B. Plan Risk Responses.
- C. Perform Qualitative Risk Analysis.
- D. Perform Quantitative Risk Analysis

Answer: C

NEW QUESTION 184

Which process numerically analyzes the effect of identified risks on overall project objectives?

- A. Plan Risk Management
- B. Plan Risk Responses
- C. Perform Quantitative Risk Analysis
- D. Perform Qualitative Risk Analysis

Answer: C

NEW QUESTION 189

Which conflict resolution technique searches for solutions that bring some degree of satisfaction to all parties in order to temporarily or partially resolve the conflict?

- A. Force/direct
- B. Withdraw/avoid
- C. Compromise/reconcile
- D. Collaborate/problem solve

Answer: C

NEW QUESTION 194

The iterative and interactive nature of the Process Groups creates the need for the processes in which Knowledge Area?

- A. Project Communications Management
- B. Project Integration Management
- C. Project Risk Management
- D. Project Scope Management

Answer: B

NEW QUESTION 197

A strengths, weaknesses, opportunities, and threats (SWOT) analysis is a tool or technique used in which process?

- A. Identify Risks
- B. Control Risks
- C. Perform Quantitative Risk Analysis
- D. Perform Qualitative Risk Analysis

Answer: A

NEW QUESTION 201

What is the estimate at completion (EAC) if the budget at completion (BAC) is \$100, the actual cost (AC) is \$50, and the earned value (EV) is \$25?

- A. \$50
- B. \$100
- C. \$125
- D. \$175

Answer: C

NEW QUESTION 202

When should quality planning be performed?

- A. While developing the project charter

- B. In parallel with the other planning processes
- C. As part of a detailed risk analysis
- D. As a separate step from the other planning processes

Answer: B

NEW QUESTION 203

The number of potential communication channels for a project with 5 stakeholders is:

- A. 10.
- B. 12.
- C. 20.
- D. 24.

Answer: A

NEW QUESTION 208

The planned work contained in the lowest level of work breakdown structure (WBS) components is known as:

- A. Work packages.
- B. Accepted deliverables.
- C. The WBS dictionary.
- D. The scope baselin

Answer: A

NEW QUESTION 210

Which process involves subdividing project deliverables and project work into smaller, more manageable portions?

- A. Develop Schedule
- B. Create VVBS
- C. Estimate Activity Resources
- D. Define Scope

Answer: B

NEW QUESTION 213

An effective technique for resolving conflict that incorporates multiple viewpoints from differing perspectives to achieve consensus and commitment is:

- A. smooth/accommodate.
- B. force/direct,
- C. collaborate/problem solve,
- D. compromise/reconcil

Answer: C

NEW QUESTION 215

Which group is formally chartered and responsible for reviewing, evaluating, approving, delaying, or rejecting changes to the project and for recording and communicating decisions?

- A. Project team
- B. Focus group
- C. Change control board
- D. Project stakeholders

Answer: C

NEW QUESTION 218

The process of identifying and documenting project roles, responsibilities, required skills, and reporting relationships and creating a staffing management plan is known as:

- A. Develop Project Team.
- B. Manage Project Team.
- C. Acquire Project Team.
- D. Plan Human Resource Managemen

Answer: D

NEW QUESTION 219

A tool or technique used in the Control Procurements process is:

- A. Expert judgment.
- B. Performance reporting.
- C. Bidder conferences.
- D. Reserve analysi

Answer: B

NEW QUESTION 224

Which Control Quality tool is also known as an arrow diagram?

- A. Matrix diagram
- B. Affinity diagram
- C. Tree diagram
- D. Activity network diagram

Answer: D

NEW QUESTION 225

A project charter is an output of which Process Group?

- A. Executing
- B. Planning
- C. Initiating
- D. Closing

Answer: C

NEW QUESTION 226

The zero duration of milestones in project planning occurs because milestones:

- A. Are unpredictable and challenge the Plan Schedule Management process.
- B. Occur at random times in the project plans.
- C. Represent a moment in time such as a significant project point or event.
- D. Represent both significant and insignificant points in the project and are difficult to anticipate

Answer: C

NEW QUESTION 227

Which project risk listed in the table below is most likely to occur?

Project Risks	Probability	Impact
Risk 1	L	M
Risk 2	H	H
Risk 3	L	L
Risk 4	M	L

- A. 1
- B. 2
- C. 3
- D. 4

Answer: B

NEW QUESTION 230

Projects that share common outcomes, collective capability, knowledge, or skills are often grouped into a:

- A. portfolio
- B. program
- C. selection
- D. sub portfolio

Answer: B

NEW QUESTION 233

Specification of both the deliverables and the processes is the focus of:

- A. Change control
- B. Configuration control
- C. Project monitoring and control
- D. Issue control

Answer: B

NEW QUESTION 238

Which Define Activities tool or technique is used for dividing and subdividing the project scope and project deliverables into smaller, more manageable parts?

- A. Decomposition
- B. Inspection
- C. Project analysis
- D. Document analysis

Answer: A

NEW QUESTION 240

Which stakeholder approves a project's result?

- A. Customer
- B. Sponsor
- C. Seller
- D. Functional manager

Answer: A

NEW QUESTION 241

Requirements documentation will typically contain at least:

- A. Stakeholder requirements, staffing requirements, and transition requirements.
- B. Business requirements, the stakeholder register, and functional requirements.
- C. Stakeholder impact, budget requirements, and communications requirements.
- D. Business objectives, stakeholder impact, and functional requirement

Answer: D

NEW QUESTION 242

Which Perform Quality Assurance tool or technique is used to identify a problem, discover the underlying causes that lead to it, and develop preventative actions?

- A. Inspection
- B. Quality audits
- C. Design of experiments
- D. Root cause analysis

Answer: D

NEW QUESTION 244

Success is measured by benefits realization for a:

- A. strategic plan
- B. project
- C. portfolio
- D. program

Answer: C

NEW QUESTION 249

Variance and trend analysis is a tool and technique used in which process?

- A. Perform Qualitative Risk Analysis
- B. Perform Quantitative Risk Analysis
- C. Control Risks
- D. Plan Risk Responses

Answer: C

NEW QUESTION 253

The lowest level normally depicted in a work breakdown structure (VVBS) is called a/an:

- A. work package
- B. deliverable
- C. milestone
- D. activity

Answer: A

NEW QUESTION 258

A benefit of using virtual teams in the Acquire Project Team process is the reduction of the:

- A. cultural differences of team members
- B. possibility of communication misunderstandings
- C. costs associated with travel
- D. costs associated with technology

Answer: C

NEW QUESTION 259

Project management processes ensure the:

- A. alignment with organizational strategy
- B. efficient means to achieve the project objectives
- C. performance of the project team
- D. effective flow of the project throughout its life cycle

Answer: D

NEW QUESTION 264

Which Control Stakeholder Engagement tool or technique allows the project manager to consolidate and facilitate distribution of reports?

- A. Information management systems
- B. Work performance reports
- C. Stakeholder analysis
- D. Data gathering and representation

Answer: A

NEW QUESTION 265

Which type of dependency used in the Sequence Activities process is sometimes referred to as preferred logic, preferential logic, or soft logic?

- A. Internal
- B. External
- C. Discretionary
- D. Mandatory

Answer: C

NEW QUESTION 266

The purpose of developing a project scope management plan is to:

- A. Manage the timely completion of the project.
- B. Ensure that the project includes all of the work required.
- C. Make sure the project will satisfy the needs for which it was begun.
- D. Reduce the risk of negative events in the projec

Answer: B

NEW QUESTION 270

An input to the Control Quality process is:

- A. Activity attributes
- B. Quality control measurements
- C. Enterprise environmental factors
- D. Deliverables

Answer: D

NEW QUESTION 274

A projects purpose or justification, measurable project objectives and related success criteria, a summary milestone schedule, and a summary budget are all components of which document?

- A. Work breakdown structure
- B. Requirements document
- C. Project charter
- D. Project management plan

Answer: C

NEW QUESTION 276

In which phase of team building activities do team members begin to work together and adjust their work habits and behavior to support the team?

- A. Performing
- B. Storming
- C. Norming
- D. Forming

Answer: C

NEW QUESTION 280

Which tool or technique used in the Control Procurements process can be conducted during the execution of the project to verify compliance with deliverables?

- A. Procurement documents
- B. Inspection and audits
- C. Estimate budget
- D. Risk register

Answer: B

NEW QUESTION 283

Which type of analysis is used to determine the cause and degree of difference between the baseline and actual performance?

- A. Schedule network analysis
- B. Reserve analysis
- C. Alternative analysis
- D. Variance analysis

Answer: D

NEW QUESTION 288

The degree of uncertainty an entity is willing to take on in anticipation of a reward is known as its risk:

- A. management
- B. response
- C. tolerance
- D. appetite

Answer: D

NEW QUESTION 291

Which is an enterprise environmental factor?

- A. Marketplace conditions
- B. Policies and procedures
- C. Project files from previous projects
- D. Lessons learned from previous projects

Answer: A

NEW QUESTION 295

Which process involves the creation of a document that provides the project manager with the authority to apply resources to a project?

- A. Define Activities
- B. Direct and Manage Project Work
- C. Develop Project Management Plan
- D. Develop Project Charter

Answer: D

NEW QUESTION 296

Which project document is updated in the Control Stakeholder Engagement process?

- A. Project reports
- B. Issue log
- C. Lessons learned documentation
- D. Work performance information

Answer: B

NEW QUESTION 299

Which items are an output of the Perform Integrated Change Control process?

- A. Work performance reports
- B. Accepted deliverables
- C. Project management plan updates
- D. Organizational process assets

Answer: C

NEW QUESTION 303

The chart below is an example of a:

ID	Requirements Description	Project Objectives	WBS Deliverables	Product Design	Product Development	Test Cases
001						
002						
003						

- A. Responsibility assignment matrix (RAM)
- B. Work breakdown structure (WBS)
- C. RACI chart
- D. Requirements traceability matrix

Answer: D

NEW QUESTION 306

Which term describes an assessment of correctness?

- A. Accuracy
- B. Precision
- C. Grade
- D. Quality

Answer: A

NEW QUESTION 309

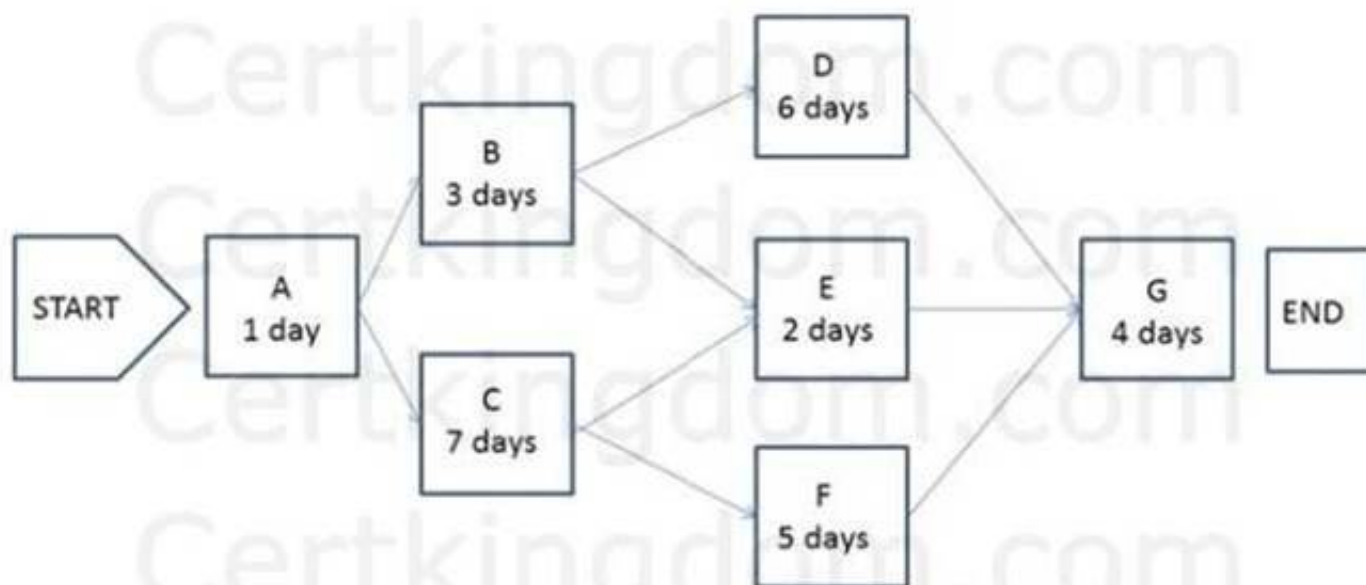
When a project is undertaken to reduce defects in a product or service, the objective of the project is to create a/an:

- A. improvement
- B. program
- C. result
- D. portfolio

Answer: A

NEW QUESTION 310

The following is a network diagram for a project.



The total float for the project is how many days?

- A. 3
- B. 5
- C. 7
- D. 9

Answer: A

NEW QUESTION 311

A full-time project manager with low to moderate authority and part-time administrative staff is working in an organizational structure with which type of matrix?

- A. Strong
- B. Weak
- C. Managed
- D. Balanced

Answer: D

NEW QUESTION 315

Which output of Project Cost Management consists of quantitative assessments of the probable costs required to complete project work?

- A. Activity cost estimates
- B. Earned value management
- C. Cost management plan
- D. Cost baseline

Answer: A

NEW QUESTION 317

Which items are components of a project management plan?

- A. Change management plan, process improvement plan, and scope management plan
- B. Agreements, procurement management plan, and work performance information
- C. Schedule management plan, project schedule, and resource calendars
- D. Scope baseline, project statement of work, and requirements traceability matrix

Answer: A

NEW QUESTION 319

The following chart contains information about the tasks in a project.

Task	PV	AC	EV
1	10,000	10,000	10,000
2	10,000	8,000	10,000
3	10,000	8,000	8,000
4	9,000	12,000	10,000
5	10,000	12,000	12,000
6	10,000	10,000	12,000
7	12,000	12,000	10,000
8	10,000	8,000	9,000
9	12,000	10,000	11,000

Based on the chart, what is the cost performance index (CPI) for Task 2? A. 0.8

- A. 1
- B. 1.25
- C. 1.8

Answer: C

NEW QUESTION 322

Skills necessary for project management such as motivating to provide encouragement; listening actively; persuading a team to perform an action; and summarizing, recapping, and identifying next steps are known as:

- A. organizational skills
- B. technical skills
- C. communication skills
- D. hard skills

Answer: C

NEW QUESTION 325

Outputs of the Control Communications process include:

- A. expert judgment and change requests.
- B. work performance information and change requests.
- C. organizational process asset updates and an issue log.
- D. project management plan updates and an issue log

Answer: B

NEW QUESTION 329

In the Plan Procurement Management process, which source selection criteria analyzes if the seller's proposed technical methodologies, techniques, solutions, and services meet the procurement documents requirements?

- A. Technical approach
- B. Technical capability
- C. Business size and type
- D. Production capacity and interest

Answer: A

NEW QUESTION 334

During which process does the project team receive bids and proposals?

- A. Conduct Procurements
- B. Plan Procurements
- C. Estimate Costs
- D. Control Budget

Answer: A

NEW QUESTION 335

Which Process Group includes the Manage Stakeholder Engagement process?

- A. Executing
- B. Planning
- C. Monitoring and Controlling
- D. Initiating

Answer: A

NEW QUESTION 340

An output of the Perform Integrated Change Control process is:

- A. Deliverables.
- B. Validated changes.
- C. The change log.
- D. The requirements traceability matrix

Answer: C

NEW QUESTION 343

The component of the risk management plan that documents how risk activities will be recorded is called:

- A. tracking
- B. scoping
- C. timing
- D. defining

Answer: A

NEW QUESTION 347

Which process involves determining, documenting, and managing stakeholders' needs and requirements to meet project objectives?

- A. Collect Requirements
- B. Plan Scope Management
- C. Define Scope
- D. Define Activities

Answer: A

NEW QUESTION 351

Perform Integrated Change Control is the process of:

- A. Reviewing, approving, and managing all change requests
- B. Facilitating change management, manuals, or automation tools
- C. Comparing actual results with planned results in order to expand or change a project
- D. Documenting changes according to the change control system by the change control board

Answer: A

NEW QUESTION 356

An intentional activity to modify a nonconforming product or product component is called:

- A. defect repair
- B. work repair
- C. corrective action
- D. preventive action

Answer: A

NEW QUESTION 358

The process of monitoring the status of the project and product scope as well as managing the changes to the scope baseline is known as:

- A. Validate Scope.
- B. Plan Scope Management.
- C. Control Scope.
- D. Define Scop

Answer: C

NEW QUESTION 359

The component of the human resource management plan that includes ways in which team members can obtain certifications that support their ability to benefit the project is known as:

- A. recognition and rewards
- B. compliance
- C. staff acquisition
- D. training needs

Answer: D

NEW QUESTION 360

An example of a group decision-making technique is:

- A. nominal group technique
- B. majority
- C. affinity diagram
- D. multi-criteria decision analysis

Answer: B

NEW QUESTION 364

Organizational process assets, a lessons-learned database, and historical information are all inputs to which process?

- A. Plan Cost Management
- B. Plan Scope Management
- C. Plan Stakeholder Management
- D. Plan Schedule Management

Answer: C

NEW QUESTION 367

The Project Human Resource Management process that involves confirming human resource availability and obtaining the team necessary to complete project activities is:

- A. Acquire Project Team.
- B. Plan Human Resource Management.
- C. Manage Project Team.
- D. Develop Project Tea

Answer: A

NEW QUESTION 368

The following chart contains information about the tasks in a project.

Task	PV	AC	EV
1	10,000	10,000	10,000
2	10,000	8,000	10,000
3	10,000	8,000	8,000
4	9,000	12,000	10,000
5	10,000	12,000	12,000
6	10,000	10,000	12,000
7	12,000	12,000	10,000
8	10,000	8,000	9,000
9	12,000	10,000	11,000

Based on the chart, what is the cost variance (CV) for Task 6? A. -2,000

- A. 1,000
- B. 2,000

Answer:

NEW QUESTION 369

The methodology that combines scope, schedule, and resource measurements to assess project performance and progress is known as:

- A. Earned value management.
- B. Forecasting.
- C. Critical chain methodology.
- D. Critical path methodolog

Answer: A

NEW QUESTION 374

Which item is a cost of conformance?

- A. Training
- B. Liabilities
- C. Lost business
- D. Scrap

Answer: A

NEW QUESTION 375

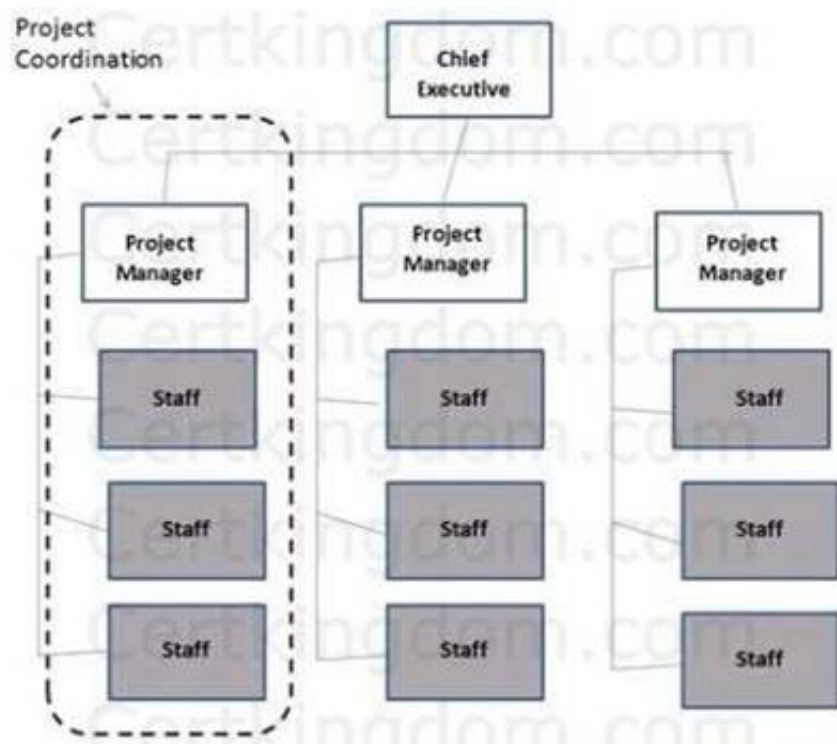
Stakeholder communication requirements should be included as a component of:

- A. enterprise environmental factors
- B. organizational process assets
- C. the project management plan
- D. the stakeholder register

Answer: C

NEW QUESTION 377

Which type of organizational structure is displayed in the diagram provided?



- A. Balanced matrix
- B. Projectized
- C. Strong matrix
- D. Functional

Answer: B

NEW QUESTION 378

Which Project Time Management process includes bottom-up estimating as a tool or technique?

- A. Estimate Activity Resources
- B. Sequence Activities
- C. Estimate Activity Durations
- D. Develop Schedule

Answer: A

NEW QUESTION 382

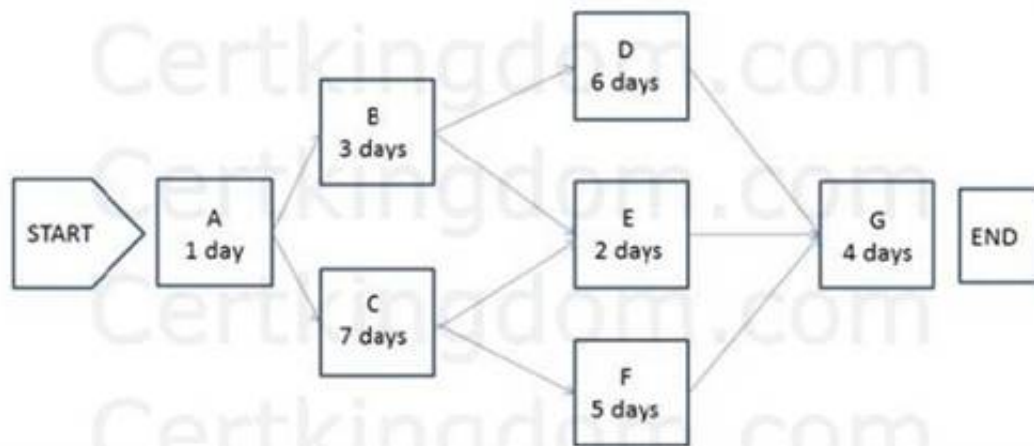
Which schedule method allows the project team to place buffers on the project schedule path to account for limited resources and project uncertainties?

- A. Critical path method
- B. Critical chain method
- C. Resource leveling
- D. Schedule network analysis

Answer: B

NEW QUESTION 386

The following is a network diagram for a project.



The critical path for the project is how many days in duration?

- A. 10
- B. 12
- C. 14
- D. 17

Answer: D

NEW QUESTION 391

The purpose of the Project Communications Management Knowledge Area is to:

- A. Monitor and control communications throughout the entire project life cycle.
- B. Maintain an optimal flow of information among all project participants.
- C. Develop an appropriate approach for project communications.
- D. Ensure timely and appropriate collection of project information.

Answer: D

NEW QUESTION 394

A project manager requesting industry groups and consultants to recommend project intervention is relying on:

- A. Communication models.
- B. Stakeholder participation.
- C. Expert judgment
- D. Enterprise environmental factor

Answer: C

NEW QUESTION 399

Which of the Perform Quality Assurance tools and techniques may enhance the creation of the work breakdown structure (WBS) to give structure to the decomposition of the scope?

- A. Activity network diagrams
- B. Affinity diagrams
- C. Matrix diagrams
- D. Interrelationship digraphs

Answer: B

NEW QUESTION 401

The primary benefit of the Plan Schedule Management process is that it:

- A. provides guidance to identify time or schedule challenges within the project.
- B. tightly links processes to create a seamless project schedule.
- C. guides how the project schedule will be managed throughout the project.
- D. creates an overview of all activities broken down into manageable subsection

Answer: C

NEW QUESTION 404

Power, urgency, and legitimacy are attributes of which stakeholder classification model?

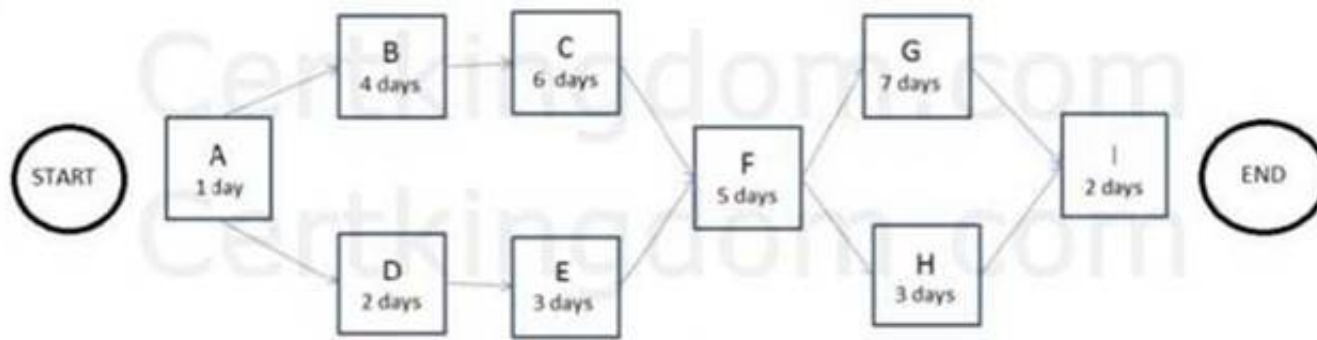
- A. Salience

- B. Influence/impact
- C. Power/interest
- D. Power/influence

Answer: A

NEW QUESTION 408

The following is a network diagram for a project.



How many possible paths are identified for this project?

- A. 3
- B. 4
- C. 6
- D. 7

Answer: B

NEW QUESTION 409

For a stakeholder with low interest and high power, the project manager should:

- A. Monitor the stakeholder.
- B. Manage the stakeholder closely.
- C. Keep the stakeholder satisfied.
- D. Keep the stakeholder informed

Answer: C

NEW QUESTION 410

While processes in the Planning Process Group seek to collect feedback and define project documents to guide project work, organizational procedures dictate when the project planning:

- A. ends.
- B. begins.
- C. delays.
- D. deviate

Answer: A

NEW QUESTION 415

Retreating from an actual or potential conflict or postponing the issue to be better prepared or to be resolved by others describes which of the five general techniques for managing conflict?

- A. Smooth/accommodate
- B. Withdraw/avoid
- C. Compromise/reconcile
- D. Force/direct

Answer: B

NEW QUESTION 418

Analytical techniques are a tool and technique of which process in Project Procurement Management?

- A. Plan Procurement Management
- B. Control Procurements
- C. Conduct Procurements
- D. Close Procurements

Answer: C

NEW QUESTION 420

A project manager who communicates to the project team through email is using which type of communication?

- A. Formal
- B. Informal
- C. Horizontal
- D. Unofficial

Answer: B

NEW QUESTION 421

Tools and techniques used in Direct and Manage Project Work include:

- A. Process analysis and expert judgment
- B. Analytical techniques and a project management information system
- C. Performance reviews and meetings
- D. Expert judgment and meetings

Answer: D

NEW QUESTION 422

A disadvantage associated with virtual teams is that they:

- A. Require communication technology that is not readily available.
- B. Create difficulties when including people with disabilities.
- C. Often cannot accommodate teams that work different hours or shifts.
- D. Create the possibility for misunderstandings to arise

Answer: D

NEW QUESTION 425

The risk response strategy in which the project team acts to reduce the probability of occurrence or impact of a risk is known as:

- A. exploit
- B. avoid
- C. mitigate
- D. share

Answer: C

NEW QUESTION 426

Which Manage Communications tool or technique focuses on identifying and managing barriers?

- A. Communication methods
- B. Information technology
- C. Communication models
- D. Information management systems

Answer: C

NEW QUESTION 430

A graphic display of project team members and their reporting relationships is known as a:

- A. Resource calendar.
- B. Project organization chart.
- C. Resource breakdown structure (RBS).
- D. Responsibility assignment matrix (RAM).

Answer: B

NEW QUESTION 434

The process of defining how the project scope will be validated and controlled is known as:

- A. Define Scope.
- B. Develop Project Management Plan.
- C. Plan Scope Management.
- D. Plan Quality Management

Answer: C

NEW QUESTION 435

The most appropriate project life cycle model for an environment with a high level of change and extensive stakeholder involvement in projects is:

- A. adaptive
- B. reflexive
- C. predictive
- D. iterative

Answer: A

NEW QUESTION 439

A project team member agrees to change a project deliverable after a conversation with an external stakeholder. It is later discovered that the change has had an

adverse effect on another deliverable. This could have been avoided if the project team had implemented:

- A. Quality assurance.
- B. A stakeholder management plan.
- C. Project team building.
- D. Integrated change contro

Answer: D

NEW QUESTION 442

Every project creates a unique product, service, or result that may be:

- A. tangible
- B. targeted
- C. organized
- D. variable

Answer: A

NEW QUESTION 447

Project Scope Management is primarily concerned with:

- A. Developing a detailed description of the project and product.
- B. Determining how requirements will be analyzed, documented, and managed.
- C. Defining and controlling what is and is not included in the project.
- D. Formalizing acceptance of the completed project deliverable

Answer: C

NEW QUESTION 452

Technical capability, past performance, and intellectual property rights are examples of:

- A. performance measurement criteria
- B. source selection criteria
- C. product acceptance criteria
- D. phase exit criteria

Answer: B

NEW QUESTION 456

Which element does a project charter contain?

- A. Management reserves
- B. Work breakdown structure
- C. Stakeholder list
- D. Stakeholder register

Answer: C

NEW QUESTION 457

A special type of bar chart used in sensitivity analysis for comparing the relative importance of the variables is called a:

- A. triangular distribution
- B. tornado diagram
- C. beta distribution
- D. fishbone diagram

Answer: B

NEW QUESTION 458

Which tool or technique is required in order to determine the project budget?

- A. Cost of quality
- B. Historical relationships
- C. Project management software
- D. Forecasting

Answer: B

NEW QUESTION 459

High-level project risks are included in which document?

- A. Business case
- B. Risk breakdown structure
- C. Project charter

D. Risk register

Answer: C

NEW QUESTION 464

Whose approval may be required for change requests after change control board (CCB) approval?

- A. Functional managers
- B. Business partners
- C. Customers or sponsors
- D. Subject matter experts

Answer: C

NEW QUESTION 466

Job satisfaction, challenging work, and sufficient financial compensation are values related to which interpersonal skill?

- A. Influencing
- B. Motivation
- C. Negotiation
- D. Trust building

Answer: B

NEW QUESTION 469

Which Project Management Process Group includes Collect Requirements, Define Activities, Sequence Activities, Perform Qualitative Risk Analysis, and Perform Quantitative Risk Analysis?

- A. Initiating
- B. Monitoring and Controlling
- C. Planning
- D. Closing

Answer: C

NEW QUESTION 471

Change requests are an output from which Project Integration Management process?

- A. Direct and Manage Project Execution
- B. Develop Project Management Plan
- C. Close Project
- D. Develop Project Charter

Answer: A

NEW QUESTION 474

Perform Quality Control is accomplished by:

- A. Identifying quality standards that are relevant to the project and determining how to satisfy them.
- B. Monitoring and recording the results of executing the quality activities to assess performance and recommend necessary changes.
- C. Ensuring that the entire project team has been adequately trained in quality assurance processes.
- D. Applying Monte Carlo, sampling, Pareto analysis, and benchmarking techniques to ensure conformance to quality standards.

Answer: B

NEW QUESTION 478

Which action should a project manager take to ensure that the project management plan is effective and current?

- A. Conduct periodic project performance reviews.
- B. Identify quality project standards.
- C. Follow ISO 9000 quality standards.
- D. Complete the quality control checklis

Answer: A

NEW QUESTION 482

Which type of analysis is used to examine project results through time to determine if performance is improving or deteriorating?

- A. Control chart
- B. Earned value
- C. Variance
- D. Trend

Answer: D

NEW QUESTION 483

The Define Scope process is in which of the following Process Groups?

- A. Initiating
- B. Planning
- C. Monitoring and Controlling
- D. Executing

Answer: B

NEW QUESTION 486

Which estimating technique uses the actual costs of previous similar projects as a basis for estimating the costs of the current project?

- A. Analogous
- B. Parametric
- C. Bottom-up
- D. Top-down

Answer: A

NEW QUESTION 489

Cost baseline is an output of which of the following processes?

- A. Control Costs
- B. Determine Budget
- C. Estimate Costs
- D. Estimate Activity Resources

Answer: B

NEW QUESTION 492

What name(s) is (are) associated with the Plan-Do-Check-Act cycle?

- A. Pareto
- B. Ishikawa
- C. Shewhart-Deming
- D. Delphi

Answer: C

NEW QUESTION 496

A collection of projects managed as a group to achieve strategic objectives is referred to as a:

- A. plan
- B. process
- C. program
- D. portfolio

Answer: D

NEW QUESTION 501

Which defines the portion of work included in a contract for items being purchased or acquired?

- A. Procurement management plan
- B. Evaluation criteria
- C. Work breakdown structure
- D. Procurement statement of work

Answer: D

NEW QUESTION 503

Portfolio Management is management of:

- A. a project by dividing the project into more manageable sub-projects.
- B. a project by utilizing a portfolio of general management skills such as planning, organizing, staffing, executing, and controlling.
- C. all projects undertaken by a company.
- D. a collection of projects that are grouped together to facilitate effective management and meet strategic business objectives.

Answer: D

NEW QUESTION 507

The CPI is .92, and the EV is US\$172,500. What is the actual cost of the project?

- A. US\$158,700
- B. US\$172,500

- C. US\$187,500
- D. US\$245,600

Answer: C

NEW QUESTION 511

Managing ongoing production of goods and services to ensure business continues efficiently describes which type of management?

- A. Portfolio
- B. Project
- C. Program
- D. Operations

Answer: D

NEW QUESTION 515

Which type of estimating can produce higher levels of accuracy, depending upon the sophistication and underlying data built into the model?

- A. Bottom-up
- B. Three-point
- C. Parametric
- D. Analogous

Answer: C

NEW QUESTION 516

An input of the Control Schedule process is the:

- A. resource calendar.
- B. activity list.
- C. risk management plan.
- D. organizational process asset

Answer: D

NEW QUESTION 517

An input required in Define Scope is an organizational:

- A. structure.
- B. process asset.
- C. matrix.
- D. breakdown structur

Answer: B

NEW QUESTION 519

The Human Resource Management processes are:

- A. Develop Human Resource Plan, Acquire Project Team, Develop Project Team, and Manage Project Team.
- B. Acquire Project Team, Manage Project Team, Manage Stakeholder Expectations, and Develop Project Team.
- C. Acquire Project Team, Develop Human Resource Plan, Conflict Management, and Manage Project Team.
- D. Develop Project Team, Manage Project Team, Estimate Activity Resources, and Acquire Project Tea

Answer: A

NEW QUESTION 521

Which process includes prioritizing risks for subsequent further analysis or action by assessing and combining their probability of occurrence and impact?

- A. Perform Qualitative Risk Analysis
- B. Perform Quantitative Risk Analysis
- C. Plan Risk Management
- D. Plan Risk Responses

Answer: A

NEW QUESTION 522

Which process uses occurrence probability and impact on project objectives to assess the priority of identified risks?

- A. Identify Risks
- B. Perform Qualitative Risk Analysis
- C. Plan Risk Management
- D. Perform Quantitative Risk Analysis

Answer: B

NEW QUESTION 527

Which technique is used in Perform Quantitative Risk Analysis?

- A. Sensitivity analysis
- B. Probability and impact matrix
- C. Risk data quality assessment
- D. Risk categorization

Answer: A

NEW QUESTION 531

Which of the following is a narrative description of products, services, or results to be delivered by a project?

- A. Project statement of work
- B. Business case
- C. Accepted deliverable
- D. Work performance information

Answer: A

NEW QUESTION 534

Which process is included in the Project Integration Management Knowledge Area?

- A. Manage Project Team
- B. Collect Requirements
- C. Sequence Activities
- D. Direct and Manage Project Work

Answer: D

NEW QUESTION 539

Which process involves documenting the actions necessary to define, prepare, integrate, and coordinate all subsidiary plans?

- A. Collect Requirements
- B. Direct and Manage Project Execution
- C. Monitor and Control Project Work
- D. Develop Project Management Plan

Answer: D

NEW QUESTION 540

Taking out insurance in relation to risk management is called what?

- A. Transference
- B. Avoidance
- C. Exploring
- D. Mitigation

Answer: A

NEW QUESTION 545

Project or phase closure guidelines or requirements, historical information, and the lessons learned knowledge base are examples of which input to the Close Project or Phase process?

- A. Organizational process assets
- B. A work breakdown structure
- C. The project management plan
- D. Enterprise environmental factors

Answer: A

NEW QUESTION 550

Which Develop Schedule tool and technique produces a theoretical early start date and late start date?

- A. Critical path method
- B. Variance analysis
- C. Schedule compression
- D. Schedule comparison bar charts

Answer: A

NEW QUESTION 552

Organizational planning impacts projects by means of project prioritization based on risk, funding, and an organizations:

- A. Budget plan

- B. Resource plan
- C. Scope plan
- D. Strategic plan

Answer: D

NEW QUESTION 557

Which schedule network analysis technique modifies the project schedule to account for limited resources?

- A. Human resource planning
- B. Fast tracking
- C. Critical chain method
- D. Rolling wave planning

Answer: C

NEW QUESTION 561

Assigned risk ratings are based upon:

- A. Root cause analysis.
- B. Risk probability and impact assessment.
- C. Expert judgment.
- D. Revised stakeholders' tolerance

Answer: B

NEW QUESTION 564

A measure of cost performance that is required to be achieved with the remaining resources in order to meet a specified management goal and is expressed as the ratio of the cost needed for finishing the outstanding work to the remaining budget is known as the:

- A. budget at completion (BAC)
- B. earned value management (EVM)
- C. to-complete performance index
- D. cost performance index

Answer: C

NEW QUESTION 569

The formal and informal interaction with others in an organization industry, or professional environment is known as:

- A. negotiation
- B. organizational theory
- C. meeting
- D. networking

Answer: D

NEW QUESTION 571

When is a project finished?

- A. After verbal acceptance of the customer or sponsor
- B. After lessons learned have been documented in contract closure
- C. When the project objectives have been met
- D. After resources have been released

Answer: C

NEW QUESTION 573

Projects can be divided into phases to provide better management control. Collectively, what are these phases known as?

- A. Complete project phase
- B. Project life
- C. The project life cycle
- D. Project cycle

Answer: C

NEW QUESTION 574

Which of the following statements correctly characterizes pull communication?

- A. It includes letters, memos, reports, emails, and faxes.
- B. It requires recipients to access communication content at their own discretion.
- C. It is the most efficient way to ensure a common understanding among all participants.
- D. It is primarily used when the volume of information to be transferred is minima

Answer: B

NEW QUESTION 575

A project manager seeking insight on previous stakeholder management plans and their effectiveness should evaluate:

- A. Historical information and the lessons-learned database.
- B. Historical information and the stakeholder register.
- C. Organizational process assets and the lessons-learned database.
- D. Project documents and historical informatio

Answer: A

NEW QUESTION 580

Which activity is an input to the Conduct Procurements process?

- A. Organizational process assets
- B. Resource availability
- C. Perform Integrated Change Control
- D. Team performance assessment

Answer: A

NEW QUESTION 583

What is the name of the statistical method that helps identify which factors may influence specific variables of a product or process under development or in production?

- A. Failure modes and effects analysis
- B. Design of experiments
- C. Quality checklist
- D. Risk analysis

Answer: B

NEW QUESTION 587

Which of the seven basic quality tools is especially useful for gathering attributes data while performing inspections to identify defects?

- A. Histograms
- B. Scatter diagrams
- C. Flowcharts
- D. Checksheets

Answer: D

NEW QUESTION 589

Which type of manager is assigned by the performing organization to lead the team that is responsible for achieving the project objectives?

- A. Program
- B. Functional
- C. Project
- D. Portfolio

Answer: C

NEW QUESTION 594

When does Monitor and Control Risks occur?

- A. At project initiation
- B. During work performance analysis
- C. Throughout the life of the project
- D. At project milestones

Answer: C

NEW QUESTION 595

Which of the following tools or techniques is used for Estimate Activity Durations?

- A. Critical path method
- B. Rolling wave planning
- C. Precedence diagramming method
- D. Parametric estimating

Answer: D

NEW QUESTION 596

While implementing an approved change, a critical defect was introduced. Removing the defect will delay the product delivery. What is the MOST appropriate approach to managing this situation?

- A. Utilize the change control process.
- B. Crash the schedule to fix the defect.
- C. Leave the defect in and work around it.
- D. Fast-track the remaining developmen

Answer: A

NEW QUESTION 600

As part of a mid-project evaluation, the project sponsor has asked for a forecast of the total project cost. What should be used to calculate the forecast?

- A. BAC
- B. EAC
- C. ETC
- D. WBS

Answer: B

NEW QUESTION 605

Which type of managers do composite organizations involve?

- A. Functional managers and manager of project managers
- B. Functional managers only
- C. Project managers only
- D. Technical managers and project managers

Answer: A

NEW QUESTION 608

An input to the Create WBS process is a:

- A. project charter.
- B. stakeholder register.
- C. project scope statement.
- D. requirements traceability matri

Answer: C

NEW QUESTION 612

The Verify Scope process is primarily concerned with:

- A. formalizing acceptance of the completed project deliverables.
- B. accuracy of the work deliverables.
- C. formalizing approval of the scope statement.
- D. accuracy of the work breakdown structure (WBS).

Answer: A

NEW QUESTION 617

The product scope description is used to:

- A. Gain stakeholders' support for the project.
- B. Progressively elaborate the characteristics of the product, service, or result.
- C. Describe the project in great detail.
- D. Define the process and criteria for accepting a completed product, service, or resul

Answer: B

NEW QUESTION 619

Most experienced project managers know that:

- A. every project requires the use of all processes in the PMBOK® Guide.
- B. there is no single way to manage a project.
- C. project management techniques are risk free.
- D. there is only one way to manage projects successfull

Answer: B

NEW QUESTION 624

What is the definition of Direct and Manage Project Execution?

- A. Integrating all planned activities
- B. Performing the activities included in the plan

- C. Developing and maintaining the plan
- D. Execution of deliverables

Answer: B

NEW QUESTION 628

The process of identifying and documenting the specific actions to be performed to produce the project deliverables is known as:

- A. Define Activities.
- B. Sequence Activities.
- C. Define Scope.
- D. Control Schedule.

Answer: A

NEW QUESTION 629

If the most likely duration of an activity is five weeks, the best-case duration is two weeks, and the worst-case duration is 14 weeks, how many weeks is the expected duration of the activity?

- A. One
- B. Five
- C. Six
- D. Seven

Answer: C

NEW QUESTION 634

What is a hierarchically organized depiction of the identified project risks arranged by risk category?

- A. Risk register
- B. Risk breakdown structure (RBS)
- C. Risk management plan
- D. Risk category

Answer: B

NEW QUESTION 639

The stakeholder register is an output of:

- A. Identify Stakeholders.
- B. Plan Stakeholder Management.
- C. Control Stakeholder Engagement.
- D. Manage Stakeholder Engagemen

Answer: A

NEW QUESTION 641

What is the number of stakeholders, if the project has 28 potential communication channels?

- A. 7
- B. 8
- C. 14
- D. 16

Answer: B

NEW QUESTION 646

Which of the following is an enterprise environmental factor that can influence the Develop Project Charter process?

- A. Organizational standard processes
- B. Marketplace conditions
- C. Historical information
- D. Templates

Answer: B

NEW QUESTION 647

The project management processes presented in the PMBOK Guide® should:

- A. always be applied uniformly.
- B. be selected as appropriate by the sponsor.
- C. be selected as appropriate by the project team.
- D. be applied based on ISO guideline

Answer: C

NEW QUESTION 652

The procurement process that documents agreements and related documentation for future reference is known as:

- A. Plan Procurements.
- B. Control Procurements.
- C. Close Procurements.
- D. Conduct Procurement

Answer: C

NEW QUESTION 656

Conflict should be best addressed in which manner?

- A. Early, in private, using a direct, collaborative approach
- B. Early, in public, using an indirect, collaborative approach
- C. Early, in private, using an indirect, cooperative approach
- D. As late as possible, in public, using a direct, confrontational approach

Answer: A

NEW QUESTION 661

Projects are undertaken by an organization to support the:

- A. Product performance.
- B. Budget process.
- C. Collective capabilities.
- D. Organizational strateg

Answer: D

NEW QUESTION 664

Sharing good practices introduced or implemented in similar projects in the organization and/or industry is an example of:

- A. quality audits
- B. process analysis
- C. statistical sampling
- D. benchmarking

Answer: A

NEW QUESTION 668

Which illustrates the connection between work that needs to be done and its project team members?

- A. Work breakdown structure (WBS)
- B. Network diagrams
- C. Staffing management plan
- D. Responsibility assignment matrix (RAM)

Answer: D

NEW QUESTION 671

Which type of contract is most commonly used by buying organizations because the price for goods is set at the outset and is not subject to change unless the scope of work changes?

- A. Fixed Price with Economic Price Adjustments Contract (FP-EPA)
- B. Cost-Reimbursable Contract (CR)
- C. Firm-Fixed -Price Contract (FFP)
- D. Fixed-Price-Incentive-Fee Contract (FPIF)

Answer: C

NEW QUESTION 675

What type of reward can hurt team cohesiveness?

- A. Sole-sum
- B. Win-lose
- C. Lose-win
- D. Partial-sum

Answer: B

NEW QUESTION 678

What is the total float of the critical path?

- A. Can be any number
- B. Zero or positive
- C. Zero or negative
- D. Depends on the calendar

Answer: C

NEW QUESTION 680

Which of the following is an output of the Monitor and Control Project Work process?

- A. Change requests
- B. Performance reports
- C. Organizational process assets
- D. Project management plan

Answer: A

NEW QUESTION 685

During which process group is the quality policy determined?

- A. Initiating
- B. Executing
- C. Planning
- D. Controlling

Answer: C

NEW QUESTION 687

Which of the following is TRUE about most project life cycles?

- A. Staffing level is highest at the start.
- B. The stakeholders' influence is highest at the start.
- C. The level of uncertainty is lowest at the start.
- D. The cost of changes is highest at the star

Answer: B

NEW QUESTION 690

Which is one of the major outputs of Sequence Activities?

- A. Responsibility assignment matrix (RAM)
- B. Work breakdown structure (WBS) update
- C. Project schedule network diagram
- D. Mandatory dependencies list

Answer: C

NEW QUESTION 694

Which tool is used to develop technical details within the project management plan?

- A. Expert judgment
- B. Project management methodology
- C. Project management information system (PMIS)
- D. Project selection methods

Answer: A

NEW QUESTION 697

Which of the following processes are part of the Project Integration Management Knowledge Area?

- A. Develop Project Management Plan, Collect Requirements, Create WBS
- B. Develop Project Management Plan, Control Scope, Develop Schedule
- C. Develop Project Charter, Define Scope, Estimate Costs
- D. Develop Project Charter, Direct and Manage Project Execution, Close Project or Phase

Answer: D

NEW QUESTION 698

The links between the processes in the Process Groups are often:

- A. Intuitive
- B. Iterative
- C. Measured
- D. Monitored

Answer: B

NEW QUESTION 699

Which process documents the business needs of a project and the new product, service, or other result that is intended to satisfy those requirements?

- A. Develop Project Management Plan
- B. Develop Project Charter
- C. Direct and Manage Project Execution
- D. Collect Requirements

Answer: B

NEW QUESTION 704

A project management office manages a number of aspects including the:

- A. Project scope, schedule, cost, and quality of the products of the work packages.
- B. Central coordination of communication management across projects.
- C. Assignment of project resources to best meet project objectives.
- D. Overall risk, overall opportunity, and interdependencies among projects at the enterprise level

Answer: D

NEW QUESTION 706

Information collected on the status of project activities being performed to accomplish the project work is known as what?

- A. Project management information system
- B. Work performance information
- C. Work breakdown structure
- D. Variance analysis

Answer: B

NEW QUESTION 711

Which enterprise environmental factors are considered during Estimate Costs?

- A. Market conditions and published commercial information
- B. Company structure and market conditions
- C. Commercial information and company structure
- D. Existing human resources and market conditions

Answer: A

NEW QUESTION 714

A change log for communications can be used to communicate to the appropriate stakeholders that there are changes:

- A. To the project management plan.
- B. To the risk register.
- C. In the scope verification processes.
- D. And their impact to the project in terms of time, cost, and risk

Answer: D

NEW QUESTION 719

What are the formal and informal policies, procedures, and guidelines that could impact how the project's scope is managed?

- A. Organizational process assets
- B. Enterprise environmental factors
- C. Project management processes
- D. Project scope management plan

Answer: A

NEW QUESTION 724

Which of the following techniques is used during Control Scope?

- A. Cost-benefit analysis
- B. Variance analysis
- C. Reserve analysis
- D. Stakeholder analysis

Answer: B

NEW QUESTION 727

A work package has been scheduled to cost \$1,000 to complete and was to be finished today. As of today, the actual expenditure is \$1,200 and approximately half

of the work has been completed. What is the cost variance?

- A. -700
- B. -200
- C. 200
- D. 500

Answer: A

NEW QUESTION 731

What is an objective of the Develop Project Team process?

- A. Feelings of trust and improved cohesiveness
- B. Ground rules for interaction
- C. Enhanced resource availability
- D. Functional managers becoming more involved

Answer: A

NEW QUESTION 733

Which is an example of Administer Procurements?

- A. Negotiating the contract
- B. Authorizing contractor work
- C. Developing the statement of work
- D. Establishing evaluation criteria

Answer: B

NEW QUESTION 738

At which point of the project is the uncertainty the highest and the risk of failing the greatest?

- A. Final phase of the project
- B. Start of the project
- C. End of the project
- D. Midpoint of the project

Answer: B

NEW QUESTION 743

An input of the Plan Procurement Management process is:

- A. Make-or-buy decisions.
- B. Activity cost estimates.
- C. Seller proposals.
- D. Procurement document

Answer: B

NEW QUESTION 746

Which of the following risk response strategies involves allocating ownership of a positive risk to a third party?

- A. Mitigate
- B. Transfer
- C. Share
- D. Avoid

Answer: C

NEW QUESTION 750

Which schedule compression technique has phases or activities done in parallel that would normally have been done sequentially?

- A. Crashing
- B. Fast tracking
- C. Leads and lags adjustment
- D. Parallel task development

Answer: B

NEW QUESTION 752

What type of planning is used where the work to be accomplished in the near term is planned in detail, while work in the future is planned at a higher level?

- A. Finish-to-start planning
- B. Rolling wave planning
- C. Short term planning

D. Dependency determination

Answer: B

NEW QUESTION 753

Who, along with the project manager, is supposed to direct the performance of the planned project activities and manage the various technical and organizational interfaces that exist within the project?

- A. The customer and functional managers
- B. The risk owners and stakeholders
- C. The sponsors and stakeholders
- D. The project management team

Answer: D

NEW QUESTION 754

Which is a tool or technique used in Define Scope?

- A. Templates, forms, and standards
- B. Change requests
- C. Product analysis
- D. Project assumptions

Answer: C

NEW QUESTION 759

Plan Risk Management is the process of defining how to:

- A. Communicate identified risks to the project stakeholders.
- B. Conduct risk management activities for a project.
- C. Analyze the impact a specific risk may have on the project.
- D. Address unexpected risks that may occur during a projec

Answer: B

NEW QUESTION 761

Which of the following investigates the likelihood that each specific risk will occur?

- A. Risk register
- B. Risk audits
- C. Risk urgency assessment
- D. Risk probability and impact assessment

Answer: D

NEW QUESTION 765

The scope of a project cannot be defined without some basic understanding of how to create the specified:

- A. objectives
- B. schedule
- C. product
- D. approach

Answer: C

NEW QUESTION 766

An output of the Create WBS process is:

- A. Scope baseline.
- B. Project scope statement.
- C. Organizational process assets.
- D. Requirements traceability matri

Answer: A

NEW QUESTION 768

The scope management plan is a subsidiary of which project document?

- A. Schedule management plan
- B. Project management plan
- C. Quality management plan
- D. Resource management plan

Answer: B

NEW QUESTION 769

Changes to formally controlled documentation, plans, etc. to reflect modified or additional ideas or content are known as:

- A. updates.
- B. defect repairs.
- C. preventive actions.
- D. corrective action

Answer: A

NEW QUESTION 772

Which of the following is an output of the Perform Integrated Change Control process?

- A. Project document updates
- B. Organizational process assets updates
- C. Change requests
- D. Deliverables

Answer: A

NEW QUESTION 774

How many Project Management Process Groups are there?

- A. 3
- B. 4
- C. 5
- D. 6

Answer: C

NEW QUESTION 777

Which type of elaboration allows a project management team to manage at a greater level of detail as the project evolves?

- A. Cyclic
- B. Progressive
- C. Repetitive
- D. Iterative

Answer: B

NEW QUESTION 781

Change requests, project management plan updates, project document updates, and organizational process assets updates are all outputs of which project management process?

- A. Plan Risk Responses
- B. Manage Stakeholder Expectations
- C. Define Scope
- D. Report Performance

Answer: B

NEW QUESTION 786

Which is an output from Distribute Information?

- A. Earned value analysis
- B. Trend analysis
- C. Project records
- D. Performance reviews

Answer: C

NEW QUESTION 787

Which of the following strategic considerations often results in project authorization?

- A. Customer requests and/or issue resolution
- B. Stakeholder expectations and/or strategic opportunity (business need)
- C. Technological advancement and/or senior executive request
- D. Market demand and/or legal requirements

Answer: D

NEW QUESTION 789

Which tool or technique is used in Close Procurements?

- A. Contract plan

- B. Procurement plan
- C. Closure process
- D. Procurement audits

Answer: D

NEW QUESTION 791

One of the tools and techniques of the Manage Project Team process is:

- A. organization charts.
- B. ground rules.
- C. organizational theory,
- D. conflict management

Answer: D

NEW QUESTION 793

A tool or technique in Perform Quality Control that a project manager would use is:

- A. quality audits.
- B. process analysis.
- C. benchmarking.
- D. inspection.

Answer: D

NEW QUESTION 795

Which type of analysis is used as a general management technique within the Plan Procurements process?

- A. Risk assessment analysis
- B. Make or buy analysis
- C. Contract value analysis
- D. Cost impact analysis

Answer: B

NEW QUESTION 798

The output that defines an approach to increase the support and minimize negative impacts of stakeholders is the:

- A. stakeholder management strategy.
- B. communications management plan,
- C. stakeholder register,
- D. performance report

Answer: A

NEW QUESTION 799

Which of the following reduces the probability of potential consequences of project risk events?

- A. Preventive action
- B. Risk management
- C. Corrective action
- D. Defect repair

Answer: A

NEW QUESTION 801

A tool and technique used during the Perform Qualitative Risk Analysis process is:

- A. risk data quality assessment.
- B. variance and trend analysis.
- C. data gathering and representation techniques.
- D. risk audit

Answer: A

NEW QUESTION 803

Which of the following are outputs of Develop Project Team?

- A. Human resources plan changes and project staff assignment updates
- B. Project management plan updates and enterprise environmental factor updates
- C. Resource calendars and project management plan updates
- D. Team performance assessments and enterprise environmental factor updates

Answer: D

NEW QUESTION 804

The Project Management Process Group in which performance is observed and measured regularly from project initiation through completion is:

- A. Executing.
- B. Initiating,
- C. Monitoring and Controlling.
- D. Plannin

Answer: C

NEW QUESTION 806

Monte Carlo is which type of risk analysis technique?

- A. Probability
- B. Quantitative
- C. Qualitative
- D. Sensitivity

Answer: B

NEW QUESTION 809

Which of the following schedule network analysis techniques is applied when a critical path method calculation has been completed and resources availability is critical?

- A. Applying calendars
- B. Resource leveling
- C. Resource planning
- D. Resource conflict management

Answer: B

NEW QUESTION 814

What risk technique is used to quantify the probability and impact of risks on project objectives?

- A. Expert judgment
- B. Risk registry
- C. Risk response planning
- D. Interviewing

Answer: D

NEW QUESTION 818

Which category of contracts are sellers legally obligated to complete, with possible financial damages if the project objectives are not met?

- A. Cost-reimbursable contracts
- B. Time and Material contracts (T&M)
- C. Fixed-price contracts
- D. Cost Plus Fixed Fee Contracts (CPFF)

Answer: C

NEW QUESTION 820

The milestone list is an input to which process from the Planning Process Group?

- A. Define Activities
- B. Estimate Activity Durations
- C. Estimate Activity Resources
- D. Sequence Activities

Answer: D

NEW QUESTION 825

Which Process Group contains those processes performed to define a new project?

- A. Initiating
- B. Planning
- C. Executing
- D. Closing

Answer: A

NEW QUESTION 829

Which tool or technique is used in Manage Stakeholder Expectations?

- A. Stakeholder management strategy
- B. Communication methods
- C. Issue log
- D. Change requests

Answer: B

NEW QUESTION 831

Which of the following is a tool and technique used in the Develop Schedule process?

- A. Three-point estimates
- B. Resource leveling
- C. Precedence diagramming method
- D. Bottom-up estimating

Answer: B

NEW QUESTION 836

The project manager needs to review the templates in use. The templates are part of the:

- A. Enterprise environmental factors.
- B. Historical information,
- C. Organizational process assets.
- D. Corporate knowledge bas

Answer: C

NEW QUESTION 837

During which process would stakeholders provide formal acceptance of the completed project scope?

- A. Perform Quality Control
- B. Verify Scope
- C. Control Scope
- D. Develop Schedule

Answer: B

NEW QUESTION 841

The purpose of inspection in Perform Quality Control is to keep errors:

- A. in line with a measured degree of conformity.
- B. out of the hands of the customer.
- C. in a specified range of acceptable results.
- D. out of the proces

Answer: B

NEW QUESTION 843

Which activity involves ensuring that the composition of a projects configuration items is correct?

- A. Configuration Identification
- B. Configuration Status Accounting
- C. Configuration Verification and Audit
- D. Configuration Quality Assurance

Answer: C

NEW QUESTION 845

The process of aggregating the estimated costs of individual activities or work packages to establish an authorized cost baseline is:

- A. Determine Budget.
- B. Baseline Budget.
- C. Control Costs.
- D. Estimate Cost

Answer: A

NEW QUESTION 847

Change request status updates are an output of which process?

- A. Perform Integrated Change Control
- B. Direct and Manage Project Execution
- C. Close Project or Phase
- D. Monitor and Control Project Work

Answer: A

NEW QUESTION 852

Which technique is commonly used for the Perform Quantitative Risk Analysis process?

- A. Brainstorming
- B. Strategies for opportunities
- C. Decision tree analysis
- D. Risk data quality assessment

Answer: C

NEW QUESTION 854

Which of the following outputs from the Control Schedule process aids in the communication of schedule variance (SV), schedule performance index (SPI), or any performance status to stakeholders?

- A. Performance organizations
- B. Schedule baselines
- C. Work performance measurements
- D. Change requests

Answer: C

NEW QUESTION 859

When sequencing activities, what does the common acronym FF stand for?

- A. Fixed Fee
- B. Free Float
- C. Fixed Finish
- D. Finish-to-Finish

Answer: D

NEW QUESTION 863

Which of the following project documents is an input to the Control Scope process?

- A. Vendor risk assessment diagram
- B. Risk register
- C. Requirements traceability matrix
- D. Area of responsibility summary

Answer: C

NEW QUESTION 868

Labor, materials, equipment, and supplies are examples of:

- A. Resource attributes.
- B. Resource types.
- C. Resource categories.
- D. Resource breakdown structures (RBS).

Answer: C

NEW QUESTION 872

Which process should be conducted from the project inception through completion?

- A. Monitor and Control Project Work
- B. Perform Quality Control
- C. Perform Integrated Change Control
- D. Monitor and Control Risks

Answer: C

NEW QUESTION 876

Which type of estimating is used to improve the accuracy of an activity's duration?

- A. Analogous
- B. Parametric
- C. Three-point
- D. What-if scenario analysis

Answer: C

NEW QUESTION 879

Which of the following factors is lowest at the start of the project?

- A. Cost of changes
- B. Stakeholder influences
- C. Risk
- D. Uncertainty

Answer: A

NEW QUESTION 880

What provides information regarding the ways people, teams, and organizational units behave?

- A. Organizational chart
- B. Organizational theory
- C. Organizational structure
- D. Organizational behavior

Answer: B

NEW QUESTION 883

What causes replanning of the project scope?

- A. Project document updates
- B. Project scope statement changes
- C. Variance analysis
- D. Change requests

Answer: D

NEW QUESTION 884

A project has an EV workdays, an AC workdays, and a PV workdays. What should be the concern?

- A. There is a cost underrun.
- B. There is a cost overrun.
- C. The project may not meet the deadline.
- D. The project is 20 days behind schedul

Answer: B

NEW QUESTION 885

A method to manage stakeholder expectations in the scope statement is to clearly:

- A. state the guiding principles of the organization.
- B. identify alternatives to generate different approaches.
- C. state what is out of scope.
- D. outline the results of the Delphi techniqu

Answer: C

NEW QUESTION 888

Which of the following is developed from the project scope baseline and defines only that portion of the project scope that is to be included within a related contract?

- A. Product scope description
- B. Procurement statement of work
- C. Project schedule
- D. Work breakdown structure (WBS)

Answer: B

NEW QUESTION 890

A weighting system is a tool for which area of Conduct Procurements?

- A. Plan contracting
- B. Requesting seller responses
- C. Selecting seller's
- D. Planning purchase and acquisition

Answer: C

NEW QUESTION 892

Which type of management focuses on ensuring that projects and programs are reviewed to prioritize resource allocation?

- A. Project
- B. Functional

- C. Program
- D. Portfolio

Answer: D

NEW QUESTION 894

Which of the following events would result in a baseline update?

- A. A project is behind schedule and the project manager wants the baseline to reflect estimated actual completion.
- B. A customer has approved a change request broadening the project scope and increasing the budget.
- C. One of the risks identified in the risk management plan occurs, resulting in a schedule delay.
- D. One of the key project team resources has left the team and no replacement is available.

Answer: B

NEW QUESTION 897

Which of the following is an output of Direct and Manage Project Execution?

- A. Project management plan
- B. Change request status updates
- C. Organizational process assets updates
- D. Work performance information

Answer: D

NEW QUESTION 900

Which of the following is an input to Control Scope?

- A. Project schedule
- B. Organizational process assets updates
- C. Project document updates
- D. Work performance information

Answer: D

NEW QUESTION 901

In a construction project schedule, what is the logical relationship between the delivery of the concrete materials and the pouring of concrete?

- A. Start-to-start (SS)
- B. Start-to-finish (SF)
- C. Finish-to-finish (FF)
- D. Finish-to-start (FS)

Answer: D

NEW QUESTION 905

Project contracts generally fall into which of the following three broad categories?

- A. Fixed-price, cost reimbursable, time and materials
- B. Make-or-buy, margin analysis, fixed-price
- C. Time and materials, fixed-price, margin analysis
- D. Make-or-buy, lump-sum, cost-plus-incentive

Answer: A

NEW QUESTION 909

What is the primary benefit of meeting quality requirements?

- A. Quality metrics
- B. Less rework
- C. Quality control measurements
- D. Benchmarking

Answer: B

NEW QUESTION 914

Which of the following is the primary output of the Identify Risks process?

- A. Risk management plan
- B. Risk register
- C. Change requests
- D. Risk response plan

Answer: B

NEW QUESTION 918

A required input for Create WBS is a project:

- A. quality plan.
- B. schedule network.
- C. management document update.
- D. scope statemen

Answer: D

NEW QUESTION 922

Define Activities and Estimate Activity Resources are processes in which project management Knowledge Area?

- A. Project Time Management
- B. Project Cost Management
- C. Project Scope Management
- D. Project Human Resource Management

Answer: A

NEW QUESTION 925

What is a tool to improve team performance?

- A. Staffing plan
- B. External feedback
- C. Performance reports
- D. Co-location

Answer: D

NEW QUESTION 930

What is the schedule performance index (SPI) using the following data? BAC = \$100,000 PV = \$50,000 AC = \$80,000 EV = \$40,000

- A. 1
- B. 0.4
- C. 0.5
- D. 0.8

Answer: D

NEW QUESTION 931

What is a deliverable-oriented, hierarchical decomposition of the work to be executed to accomplish the project objectives and create the required deliverables?

- A. Organizational breakdown structure (OBS)
- B. Work performance information
- C. Work package
- D. Work breakdown structure (WBS)

Answer: D

NEW QUESTION 932

Which of the following is an input to the Direct and Manage Project Execution process?

- A. Approved change requests
- B. Approved contract documentation
- C. Work performance information
- D. Rejected change requests

Answer: A

NEW QUESTION 936

"Tailoring" is defined as the:

- A. effort of addressing each process to determine which are appropriate and their appropriate degree of rigor.
- B. act of creating a project team with the specialized skills required to produce a required product or service.
- C. action taken to bring a defective or nonconforming component into compliance with requirements or specifications.
- D. adjustment of the respective influences of time, cost, and quality in order to most efficiently achieve scop

Answer: A

NEW QUESTION 940

Which of the following is an example of the simplest fixed-price contract?

- A. Purchase requisition
- B. Purchase order

- C. Verbal agreement
- D. Request for quote

Answer: B

NEW QUESTION 944

A project has a current cost performance index (CPI) of 1.25. To date, US\$10,000 have been spent on performing the project work. What is the earned value of the work completed to date?

- A. US\$S000
- B. US\$9500
- C. US\$10,000
- D. US\$12,500

Answer: D

NEW QUESTION 946

Analogous cost estimating relies on which of the following techniques?

- A. Expert judgment
- B. Project management software
- C. Vendor bid analysis
- D. Reserve analysis

Answer: A

NEW QUESTION 949

Which of the following strategies is used to deal with risks that may have a negative impact on project objectives?

- A. Exploit
- B. Share
- C. Enhance
- D. Transfer

Answer: D

NEW QUESTION 953

Which tool and technique is used in Conduct Procurements?

- A. Teaming agreements
- B. Expert judgment
- C. Bidder conferences
- D. Contract types

Answer: C

NEW QUESTION 956

Which written document helps monitor who is responsible for resolving specific problems and concerns by a target date?

- A. Project Plan
- B. Responsibility Matrix
- C. Issue Log
- D. Scope Document

Answer: C

NEW QUESTION 957

Which of the following is an input to Develop Human Resource Plan?

- A. Team performance assessment
- B. Roles and responsibilities
- C. Staffing management plan
- D. Enterprise environmental factors

Answer: D

NEW QUESTION 962

The process of identifying the stakeholders' information needs is completed during:

- A. Plan Communications.
- B. Manage Stakeholder Expectations.
- C. Stakeholder Analysis.
- D. Identify Stakeholder

Answer: A

NEW QUESTION 964

Which of the following is a tool or technique of the Define Activities process?

- A. Rolling wave planning
- B. Precedence diagramming method (PDM)
- C. Alternatives analysis
- D. Parametric estimating

Answer: A

NEW QUESTION 966

The project scope statement and resource calendars are inputs to which Project Time Management process?

- A. Sequence Activities
- B. Estimate Activity Resources
- C. Develop Schedule
- D. Control Schedule

Answer: C

NEW QUESTION 968

A purchase order for a specified item to be delivered by a specified date for a specified price is the simplest form of what type of contract?

- A. Cost-reimbursable
- B. Time and material
- C. Fixed price or lump-sum
- D. Cost-plus-fixed-fee

Answer: C

NEW QUESTION 973

Which of the following statements is true regarding project and product lifecycles?

- A. A single product lifecycle may consist of multiple project lifecycles.
- B. A product lifecycle is always shorter than the project lifecycle.
- C. A single product lifecycle can only have one project lifecycle.
- D. A single project lifecycle may consist of multiple product lifecycle

Answer: A

NEW QUESTION 975

Prioritizing risks for further analysis or action by assessing and combining their probability of occurrence and impact takes place in which process?

- A. Monitor and Control Risks
- B. Plan Risk Management
- C. Perform Qualitative Risk Analysis
- D. Perform Quantitative Risk Analysis

Answer: C

NEW QUESTION 978

Which is used to solicit proposals from prospective sellers?

- A. Procurement statement of work
- B. Resource calendars
- C. Procurement document
- D. Independent estimates

Answer: C

NEW QUESTION 982

Which of the following is an input to the Perform Qualitative Risk Analysis process?

- A. Risk register
- B. Risk data quality assessment
- C. Risk categorization
- D. Risk urgency

Answer: A

NEW QUESTION 986

Lessons learned documentation is gathered during which of the following Project Management Process Groups?

- A. Planning

- B. Executing
- C. Closing
- D. Initiating

Answer: C

NEW QUESTION 990

In which process might a project manager use risk reassessment as a tool and technique?

- A. Perform Qualitative Risk Analysis
- B. Monitor and Control Risk
- C. Monitor and Control Project Work
- D. Plan Risk Responses

Answer: B

NEW QUESTION 994

Which degree of authority does a project manager have on a project in a strong matrix organizational structure?

- A. Limited
- B. Low to moderate
- C. Moderate to high
- D. High to almost total

Answer: C

NEW QUESTION 995

When large or complex projects are separated into distinct phases or subprojects, all of the Process Groups would normally be:

- A. divided among each of the phases or subprojects.
- B. repeated for each of the phases or subprojects.
- C. linked to specific phases or subprojects.
- D. integrated for specific phases or subproject

Answer: B

NEW QUESTION 999

Which technique helps to determine the risks that have the most potential impact on a project?

- A. Cost risk simulation analysis
- B. Expected monetary value analysis
- C. Modeling and simulation
- D. Sensitivity analysis

Answer: D

NEW QUESTION 1001

Which of the following is a set of interrelated actions and activities performed to achieve a prespecified product, result, or service?

- A. Portfolio
- B. Process
- C. Project
- D. Program

Answer: B

NEW QUESTION 1006

Which of the following is an output of the Distribute Information process?

- A. Project calendar
- B. Communications management plan
- C. Organizational process assets updates
- D. Project document updates

Answer: C

NEW QUESTION 1009

Which of the following Process Groups covers all nine Project Management Knowledge Areas?

- A. Executing
- B. Monitoring and Controlling
- C. Planning
- D. Initiating

Answer: C

NEW QUESTION 1010

Co-location is a tool and technique of:

- A. Develop Human Resource Plan.
- B. Manage Project Team.
- C. Develop Project Team.
- D. Acquire Project Tea

Answer: C

NEW QUESTION 1014

Which standard has interrelationships to other project management disciplines such as program management and portfolio management?

- A. Program Management Body of Knowledge Guide
- B. The Standard for Program Management
- C. Organizational Project Management Maturity Model (OPM3\$)
- D. Guide to the Project Management Body of Knowledge (PMBOK®)

Answer: D

NEW QUESTION 1018

Which type of agreement is legal, contractual, and between two or more entities to form a partnership, joint venture, or some other arrangement as defined by the parties?

- A. Teaming
- B. Collective bargaining
- C. Sharing
- D. Working

Answer: A

NEW QUESTION 1023

Which of the following Project Communication Management processes uses performance reports as an input?

- A. Manage Stakeholder Expectations
- B. Report Performance
- C. Distribute Information
- D. Plan Communications

Answer: C

NEW QUESTION 1026

Which of the following is an example of schedule compression?

- A. Activity sequencing
- B. Resource leveling
- C. Lead and lag adjusting
- D. Crashing

Answer: D

NEW QUESTION 1028

In which process is a project manager identified and given the authority to apply resources to project activities?

- A. Acquire Project Team
- B. Develop Project Management Plan
- C. Manage Project Execution
- D. Develop Project Charter

Answer: D

NEW QUESTION 1030

The definition of operations is a/an:

- A. organizational function performing the temporary execution of activities that produce the same product or provide repetitive service.
- B. temporary endeavor undertaken to create a unique product, service, or result.
- C. organization that provides oversight for an administrative area.
- D. organizational function performing the ongoing execution of activities that produce the same product or provide repetitive service.

Answer: D

NEW QUESTION 1033

As the project progresses, which of the following is routinely collected from the project activities?

- A. Communication management activities
- B. Change requests
- C. Configuration verification and audit
- D. Work performance information

Answer: D

NEW QUESTION 1037

Which of the following characteristics are found in a functional organizational structure?

- A. Little or no project manager authority, little or no resource availability, and the functional manager controls the project budget
- B. Limited project manager authority, limited resource availability, and a part-time project manager's role
- C. Low to moderate project manager authority, low to moderate resource availability, and a full-time project manager's role
- D. High to almost total project manager authority, high to almost total resource availability, and full-time project management administrative staff

Answer: A

NEW QUESTION 1041

The progressive detailing of the project management plan is called:

- A. expert judgment.
- B. rolling wave planning.
- C. work performance information.
- D. specificatio

Answer: B

NEW QUESTION 1045

Which process requires implementation of approved changes?

- A. Direct and Manage Project Execution
- B. Monitor and Control Project Work
- C. Perform Integrated Change Control
- D. Close Project or Phase

Answer: A

NEW QUESTION 1046

Which tool or technique can a project manager use to select in advance a team member who will be crucial to the task?

- A. Acquisition
- B. Negotiation
- C. Virtual team
- D. Pre-assignment

Answer: D

NEW QUESTION 1051

Which activity may occur at project or phase closure?

- A. Acceptance of deliverables
- B. Change requests
- C. Project management plan updates
- D. Benchmarking

Answer: A

NEW QUESTION 1053

Which of the following is an output of the Conduct Procurements process?

- A. Project statement of work
- B. Selected sellers
- C. Risk register updates
- D. Teaming agreements

Answer: B

NEW QUESTION 1058

What happens to a stakeholder's project influence over time?

- A. Increases
- B. Decreases
- C. Stays the same
- D. Has no bearing

Answer: B

NEW QUESTION 1060

Resource calendars are included in the:

- A. staffing management plan.
- B. work breakdown structure (WBS).
- C. project communications plan.
- D. project charte

Answer: A

NEW QUESTION 1062

Which of the following is an input to the Develop Project Charter process?

- A. Work performance information
- B. Project management plan
- C. Business case
- D. Change requests

Answer: C

NEW QUESTION 1067

The technique of subdividing project deliverables into smaller, more manageable components until the work and deliverables are defined to the work package level is called:

- A. a control chart.
- B. baseline.
- C. Create WBS.
- D. decompositio

Answer: D

NEW QUESTION 1068

Administer Procurements is part of which Process Group?

- A. Planning
- B. Executing
- C. Monitoring and Controlling
- D. Closing

Answer: C

NEW QUESTION 1073

The cost benefit analysis tool is used for creating:

- A. Pareto charts.
- B. quality metrics.
- C. change requests,
- D. Ishikawa diagram

Answer: B

NEW QUESTION 1078

.....

THANKS FOR TRYING THE DEMO OF OUR PRODUCT

Visit Our Site to Purchase the Full Set of Actual CAPM Exam Questions With Answers.

We Also Provide Practice Exam Software That Simulates Real Exam Environment And Has Many Self-Assessment Features. Order the CAPM Product From:

<https://www.2passeasy.com/dumps/CAPM/>

Money Back Guarantee

CAPM Practice Exam Features:

- * CAPM Questions and Answers Updated Frequently
- * CAPM Practice Questions Verified by Expert Senior Certified Staff
- * CAPM Most Realistic Questions that Guarantee you a Pass on Your FirstTry
- * CAPM Practice Test Questions in Multiple Choice Formats and Updatesfor 1 Year